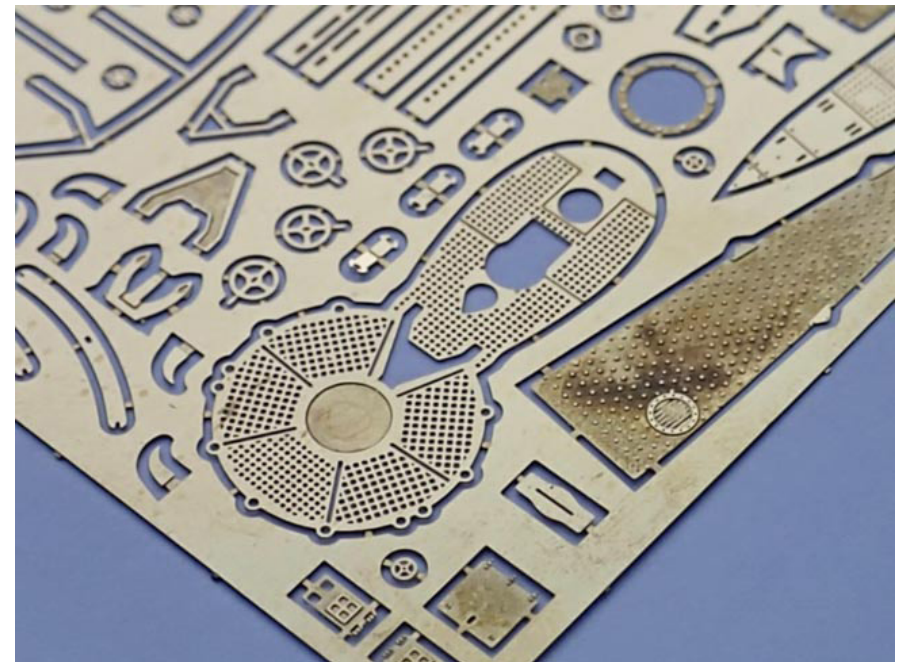
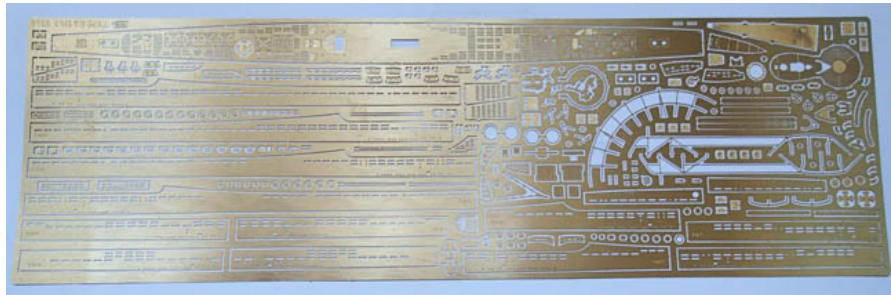
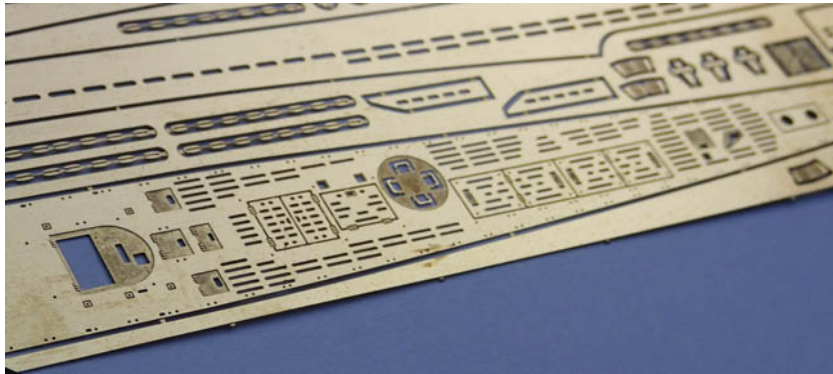
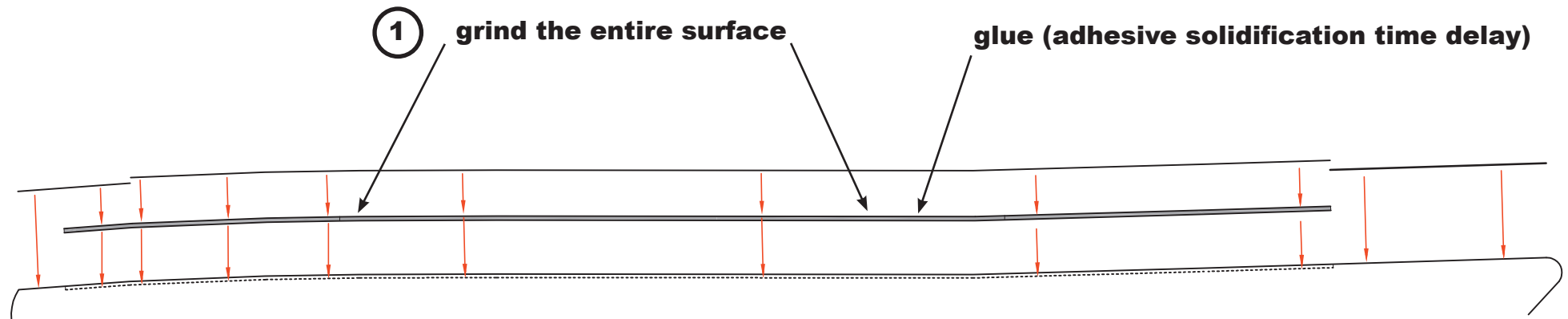


Instructions Photo Etched Deck for ICM type: IIB 1943 1/144



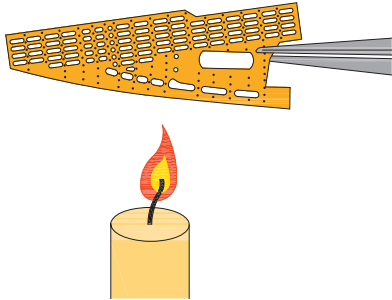


Hull -forming etchings

For a better shaping of etching, it is necessary to heat up plate and then rapidly cool down. etching is soft and well shaped according to the shape of the hull.

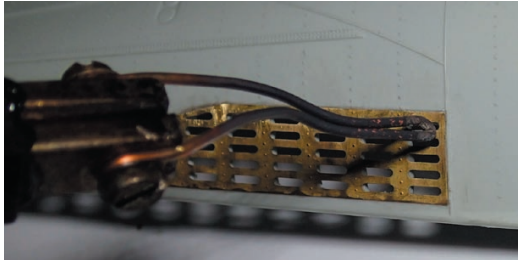
Recommendation: Try these steps to shape a different part of the sheet (the rest).

1.

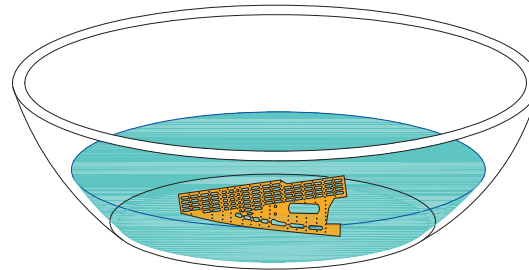


1.

fine melting to determine the outline etching (using solder)

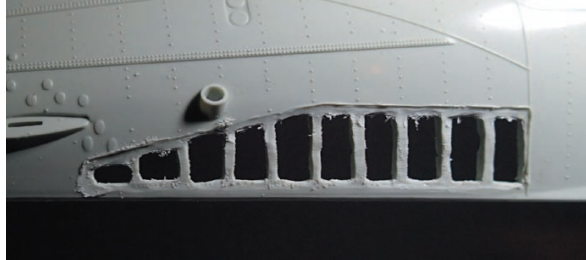


2.

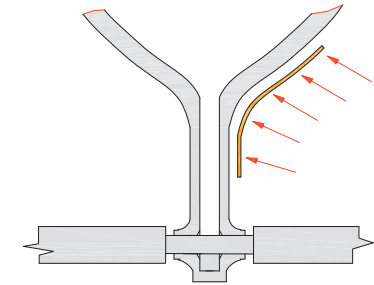


2.

formation of holes using a milling machine

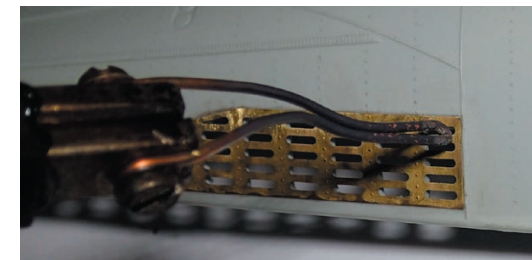


3.



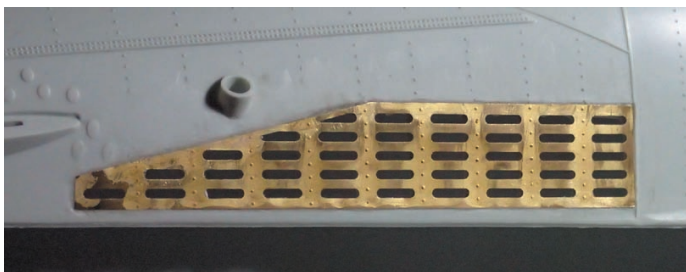
3.

melting etching into the hull

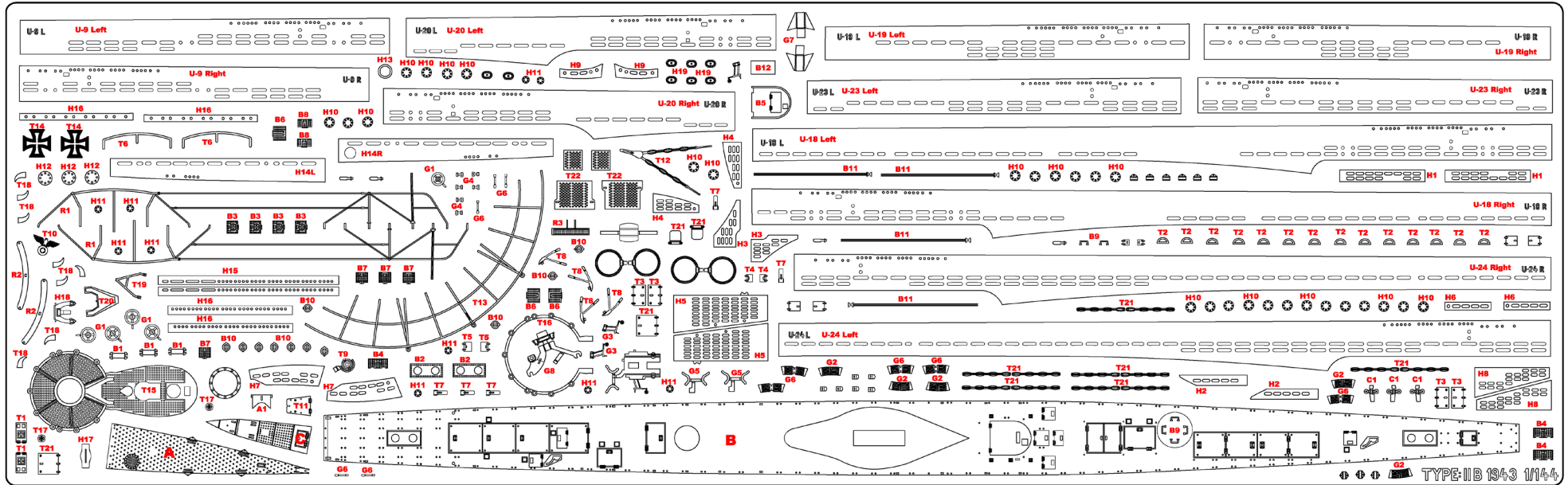


4.

gluing and kiting

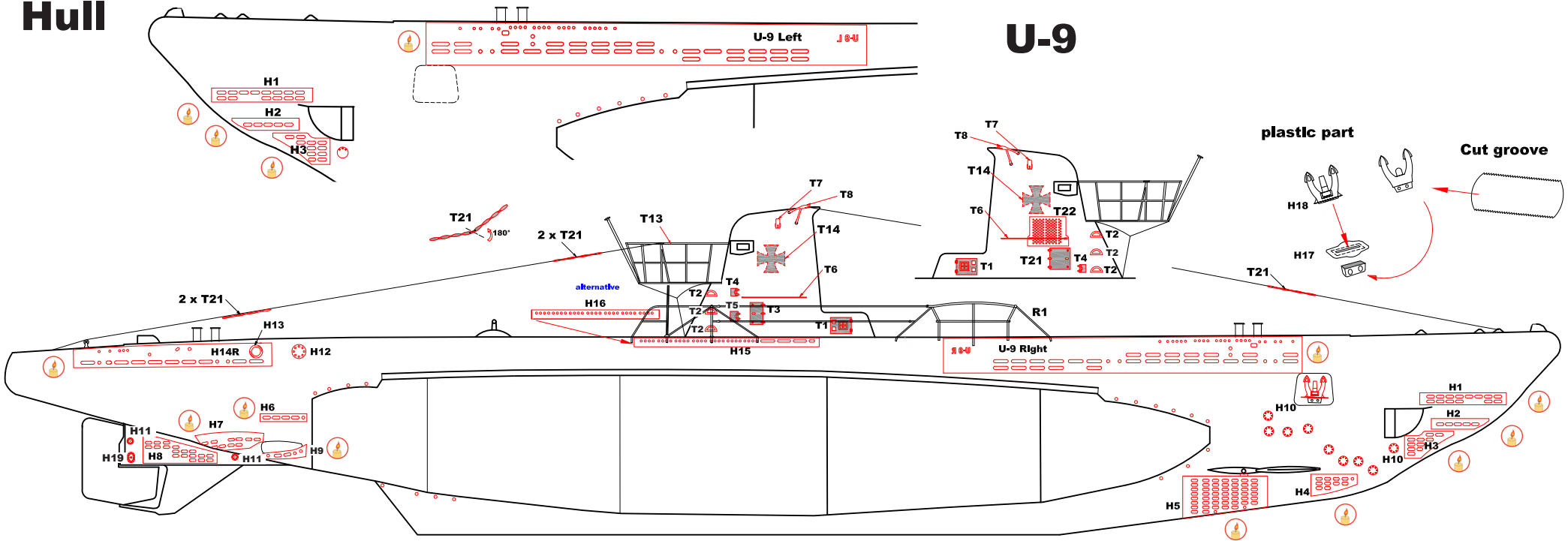


Decsription of pars PE

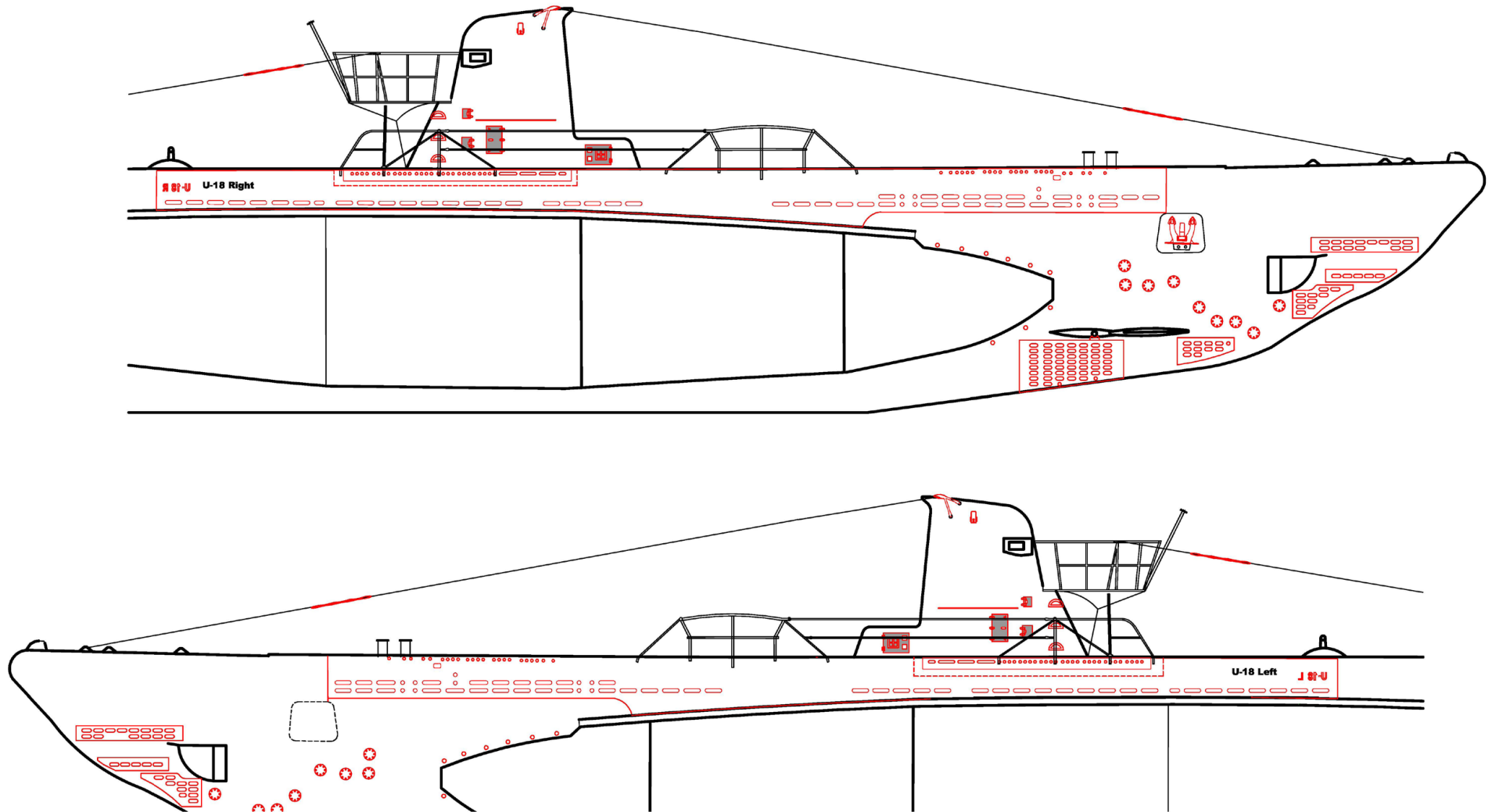


Hull

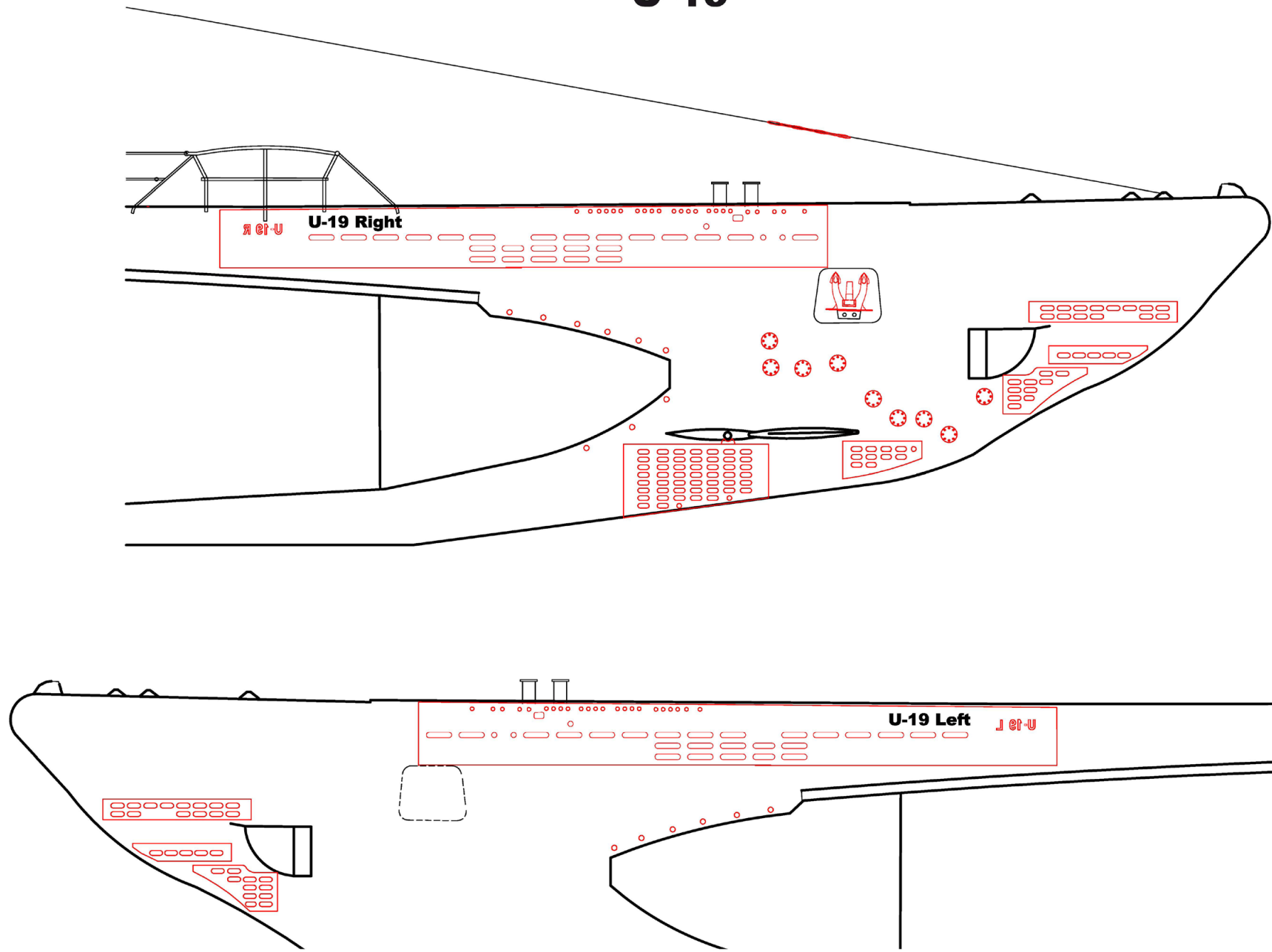
U-9



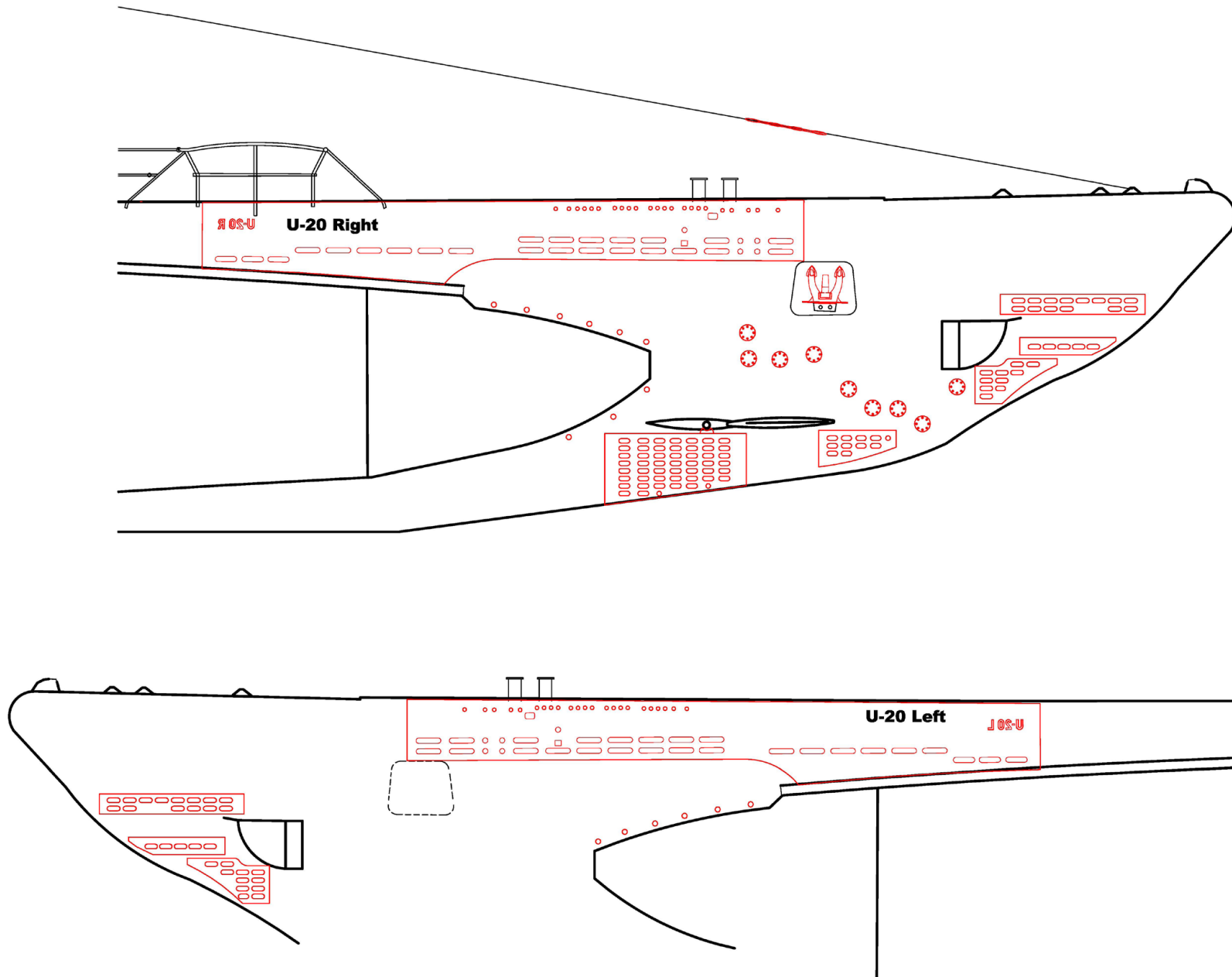
U-18



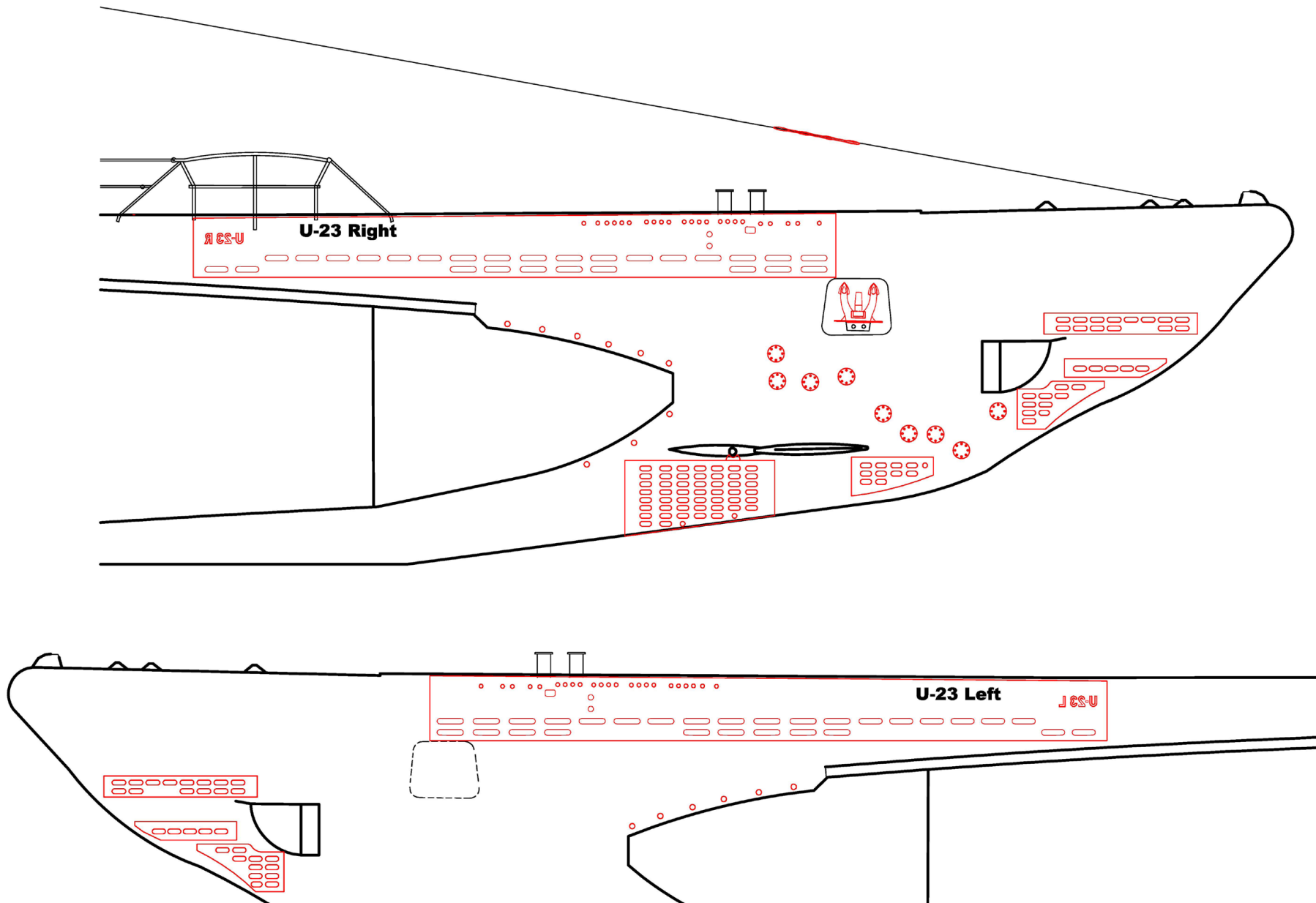
U-19



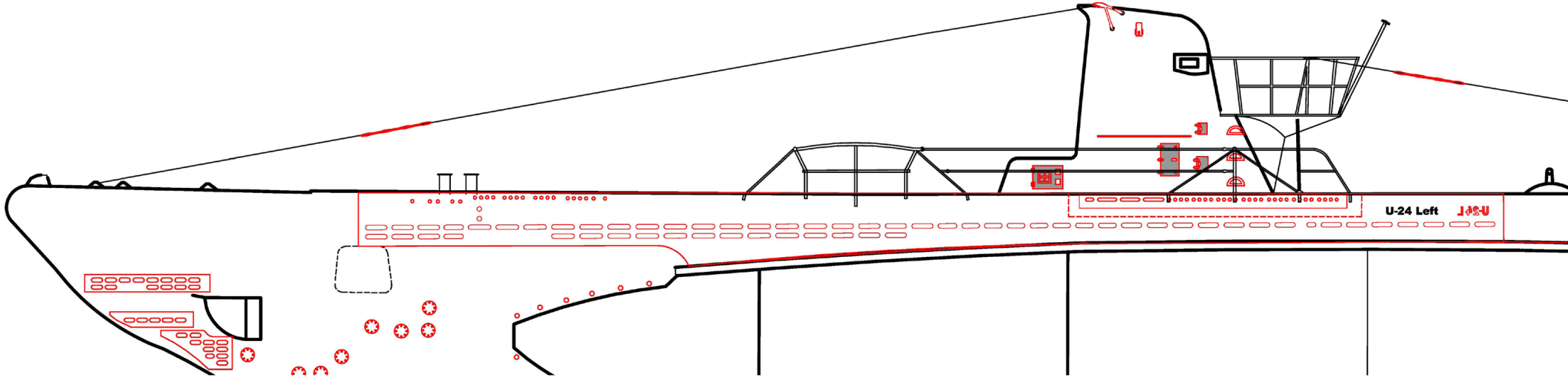
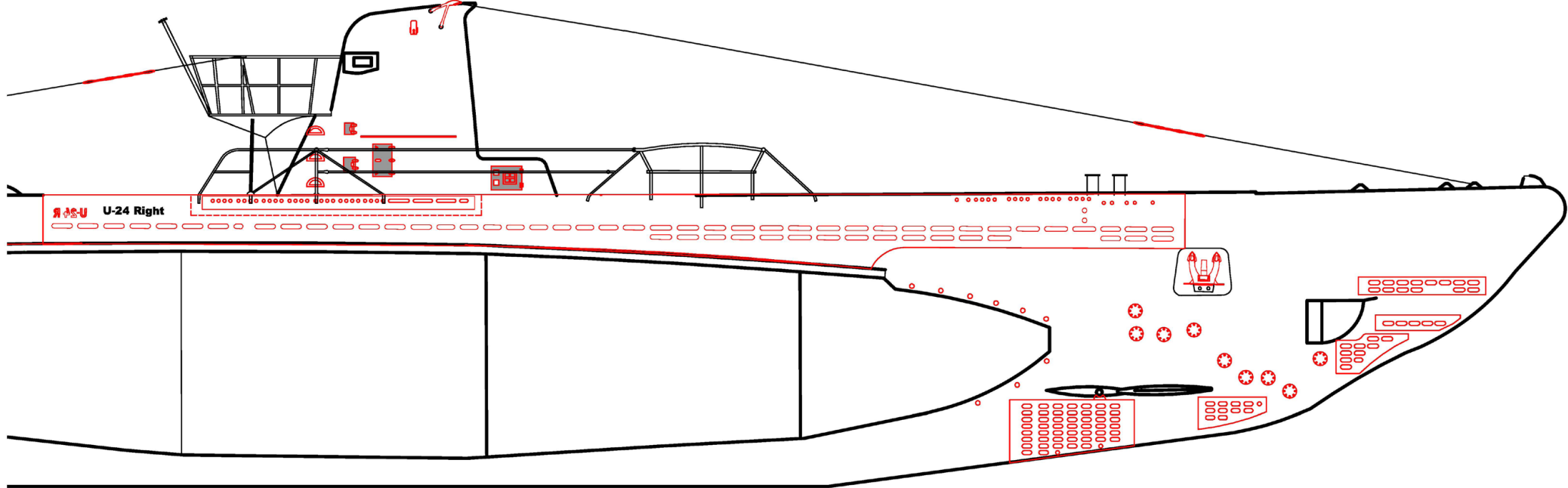
U-20



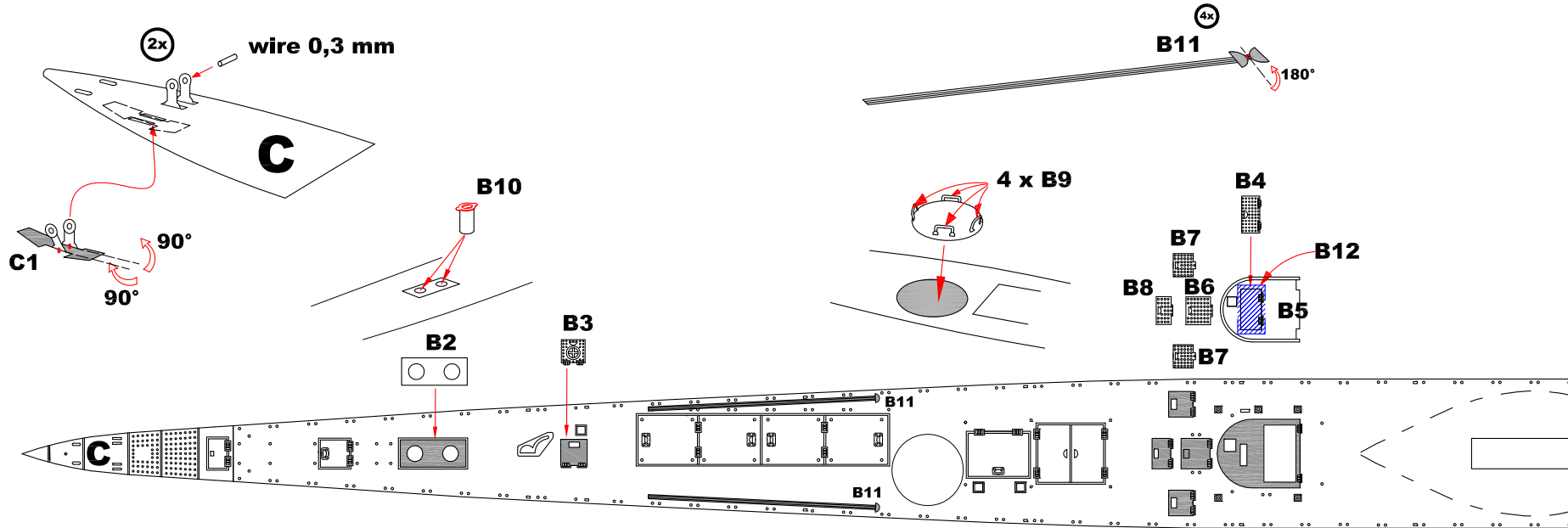
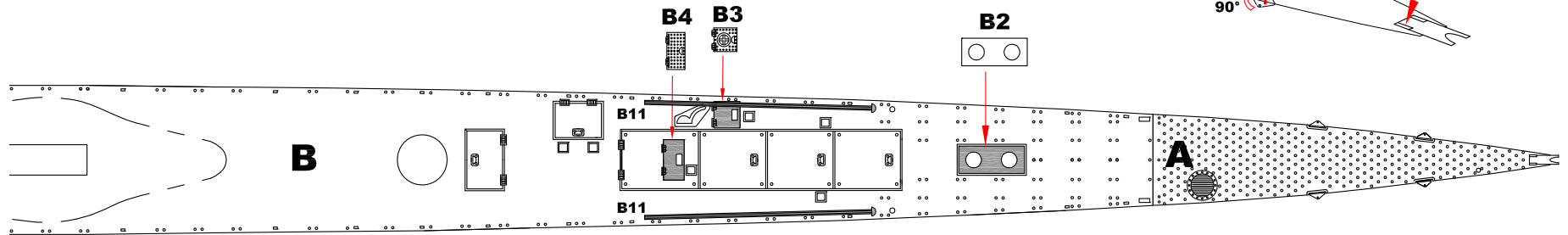
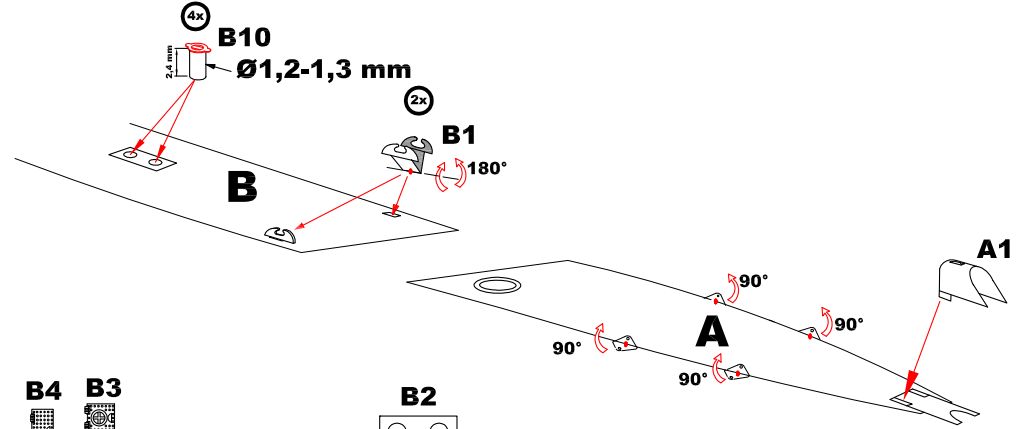
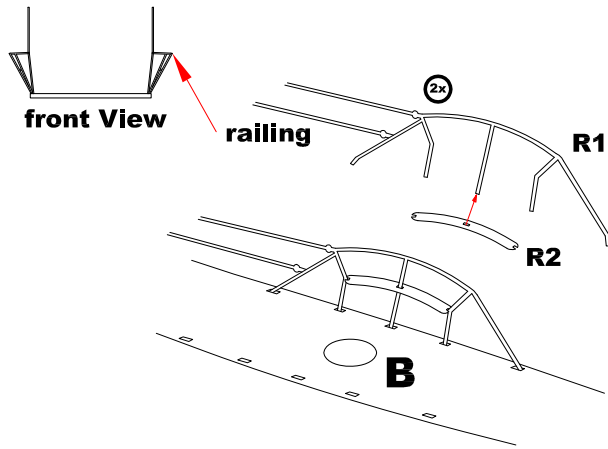
U-23



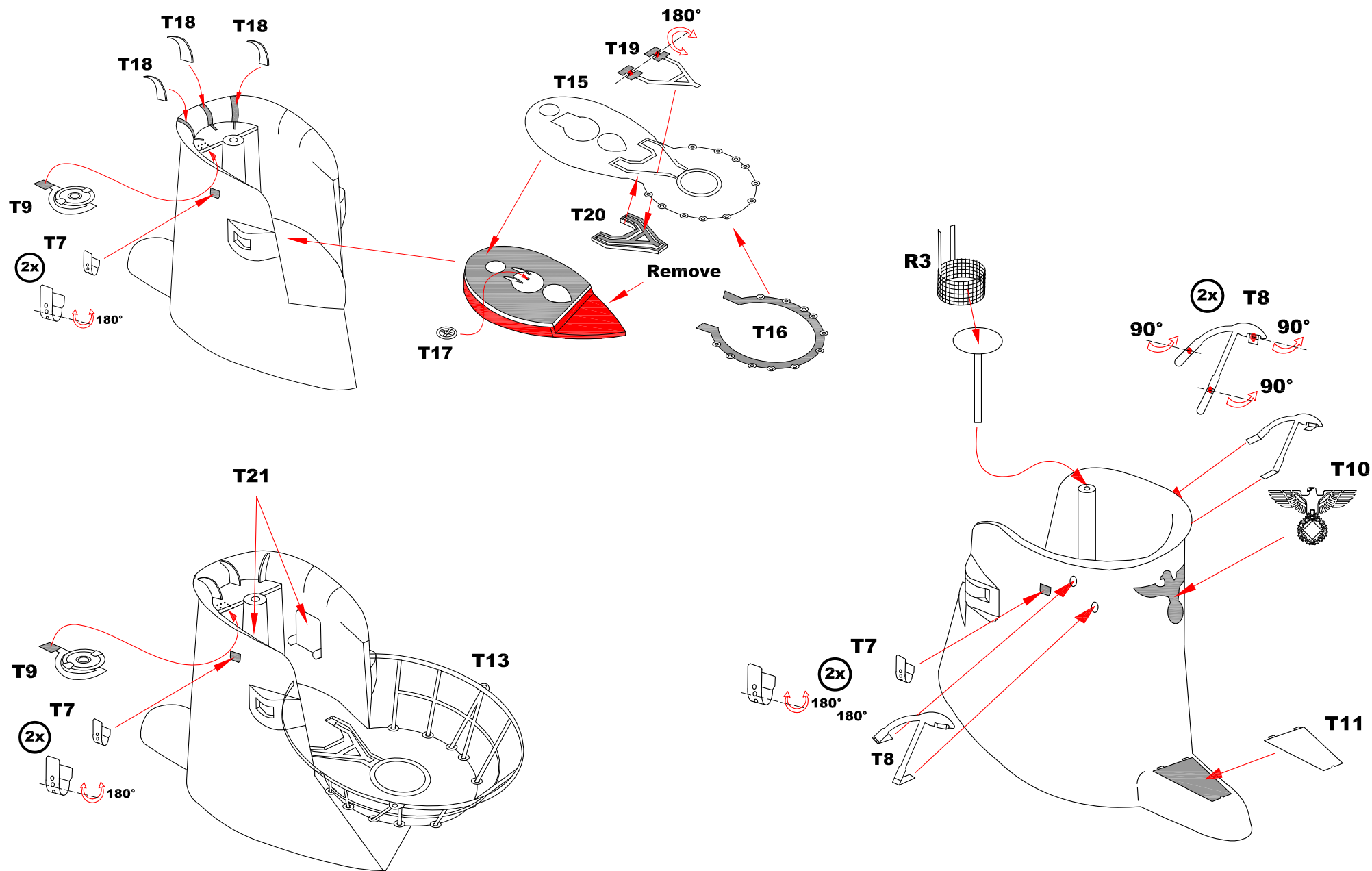
U-24



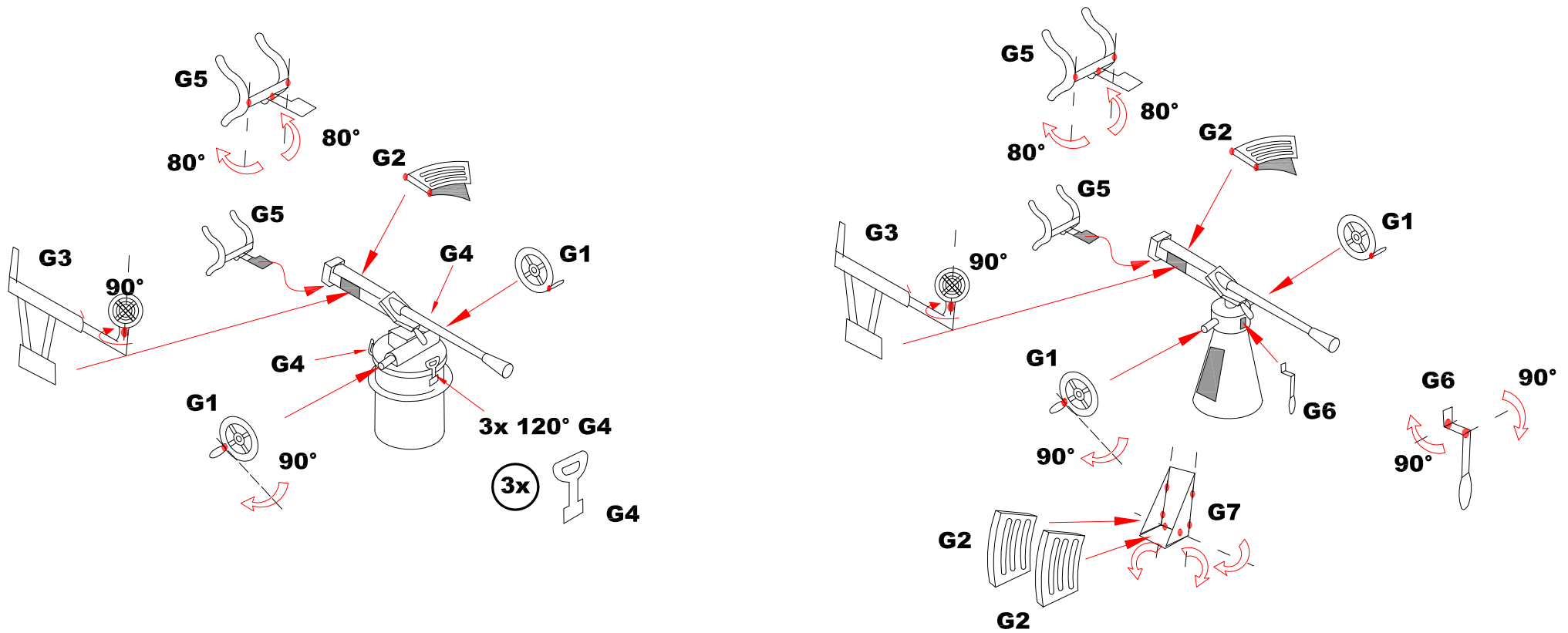
Deck



Tower



Gun 20 mm



Gun 20 mm (alternativ)

