

P-38 Wheel Set

Includes 2 main & 1 nosewheel
with flattened and bulged tires.

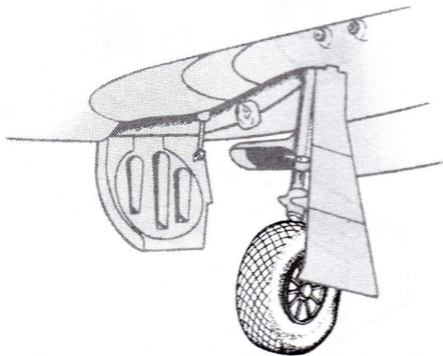
For 1/48 scale P-38 models.

STOCK # 46005

**1/48
Scale**

Turn your model into a
True Detail masterpiece

See your local hobby supplier for other
high quality photo-etched detailing parts,
cast resin wheels and other detail items.



Distributed in the U.S.A. by

MMD "The Plastic Place"

1115 Crowley Drive

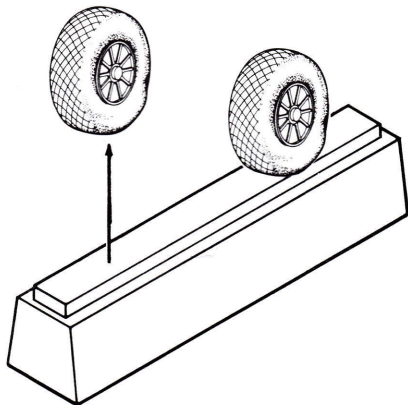
Carrollton, Texas 75011-5010

NOT SUITABLE FOR CHILDREN

Made in U.S.A.

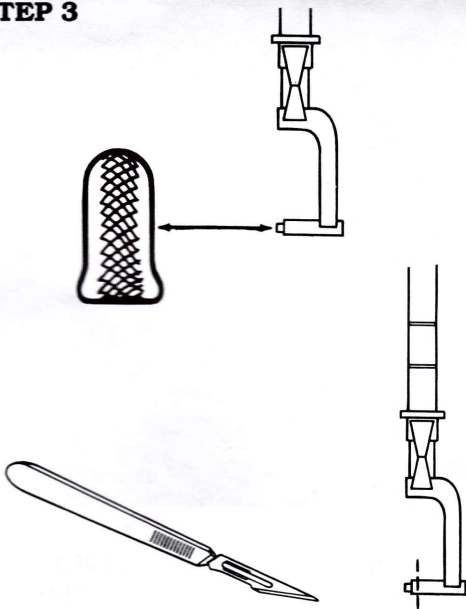
STEP 1

NOTE: Tail wheels are normally not provided as they are usually molded with the strut. Nose wheels will be provided if they are cast separately from the strut. In some cases, optional wheels will be provided. Use your references to determine which wheel was used.



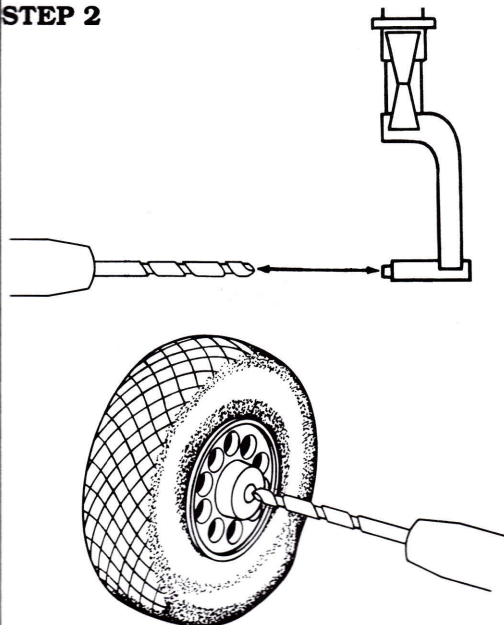
Remove the wheels from the sprue and clean up and sand the bottom surface. When sanding, be sure to keep the proper wheel angle. Some wheels sit vertically, some are angled in at the top, and others are angled out at the top. Check kit instructions for proper wheel angle. After the clean-up is completed, touch up any areas that need paint.

STEP 3



Test fit the wheel to the axle and make any size adjustments. If necessary, shorten the kit axle to fit the new wheels. When you are satisfied with the fit, touch up any areas that need paint.

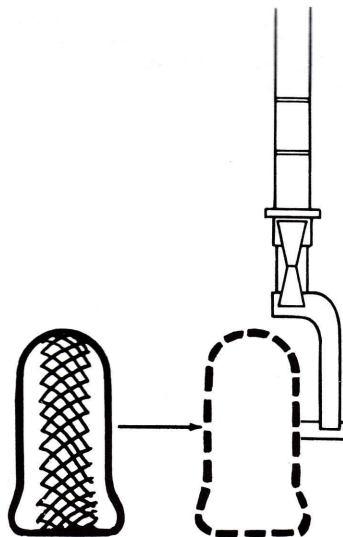
STEP 2



Match a drill bit to the kit axle. Drill the axle hole in the wheel using the pilot hole as a starting point.

NOTE: Work slowly and remove a little at a time to prevent drilling through the wheel. A pin vice works better than an electric drill.

STEP 4



When ready, attach the wheels to the kit using super glue or 5 minute epoxy.

Tools recommended

1. Hobby knife (SQUADRON PRODUCTS modeling scalpel #10601)
2. Razor saw (fine toothed)
3. Metal files (SQUADRON PRODUCTS needle file set #10701)
4. Sandpaper (various grits from 220 to 600 grit)
5. Super glue or a 5-minute epoxy
6. Tweezers (SQUADRON PRODUCTS fine point tweezers #10303)
7. Filler putty (SQUADRON PRODUCTS White Putty #SQ9060 or Green Putty #SQ9050)
8. Drill bits and pin vise

Resin Wheel Painting Guide

Wash all resin parts with a mild detergent to remove the mold release residue.

1. Use round pointed paint brushes and flat dry brushing brushes. Leave the wheel on the sprue while painting. Refer to photos and other reference materials for exact colors for the model you are building.
2. Spray the tire with the base color. When dry, apply a wash of Acrylic Flat Black or Light Gray to bring out the detail. Wash ratios should be 85-90 % thinner to 15-10 % paint. After the wash has dried, follow up by dry brushing the sidewalls with an Acrylic Dark Brown or Dark Gray. American tires were a brownish black color. German tires were a dark gray due to the use of synthetic rubber. Look at the tires on the cars parked around your home or office for color variations.
3. Wheel colors varied from area to area, and the time period. Some units had unit colors used on the wheel rims and covers.
4. Use a dark iron or steel color for the brake area.
5. Paint small details such as valve stem doors, wheel weights, wheel/tire alignment marks, etc..

Working with resin products

1. Remove the wheels from the sprue by carefully carving with a hobby knife, or by cutting with a razor saw. **Note:** It is best to cut just below the part leaving a slight amount of sprue.
2. Clean up the attachment point using either metal files or sandpaper in grits 220 thru 600. The coarseness will be determined by how much resin material has to be removed. Bear in mind that resin is softer than plastic and sands much faster.
3. Glue the resin using a super glue or 5-minute epoxy. The slower setting glue or epoxy will allow proper positioning of the part.

Repairing mistakes or damaged parts

1. **Part is glued in wrong place:** Pry the part from the model using a rigid object but keep in mind that resin is more brittle and can break easily around thin sections. Remove the glue by soaking in a glue remover or by sanding.
2. **Filling air bubbles:** Fill any voids by applying Squadron white or green putty and then sanding. Remember the resin is softer than plastic and sands much faster.

WARNING

Wear eye protection when working with resin products. Nuisance dust may be generated when sanding or sawing resin parts.