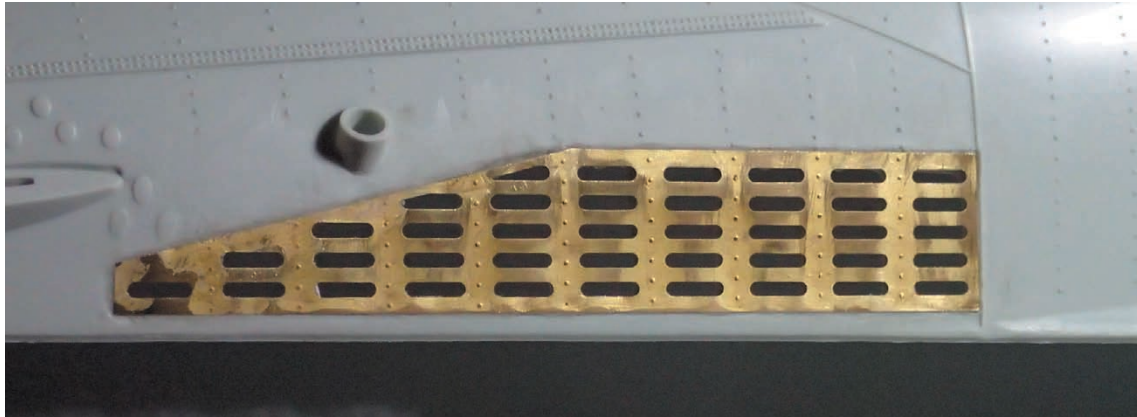
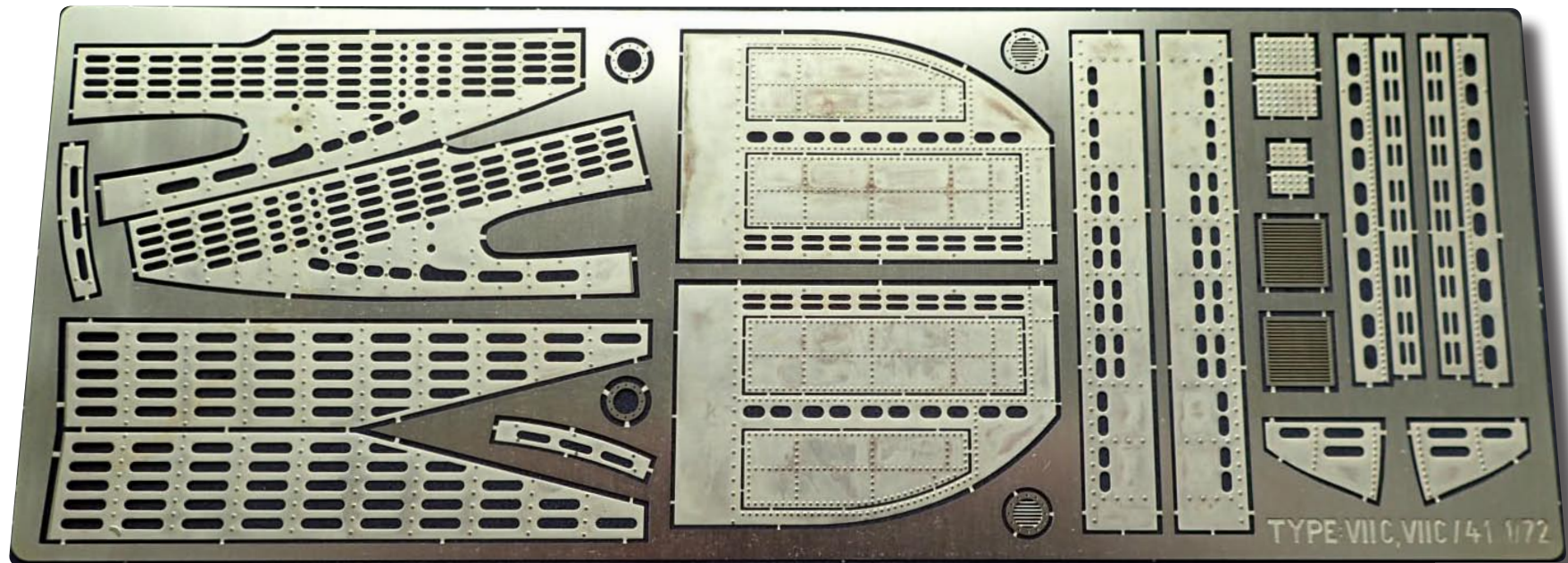


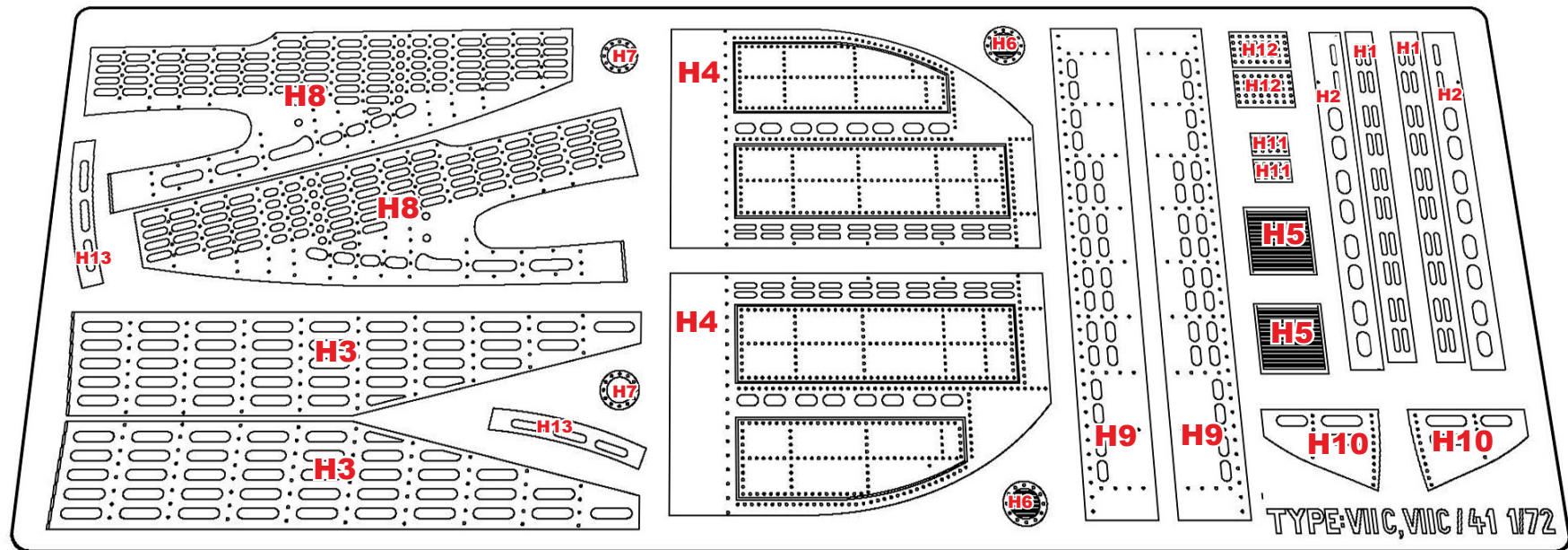
Instructions Photo Etched Deck for REVELL type: VIIC, VIIC41 1/72



VIIC VIIC41



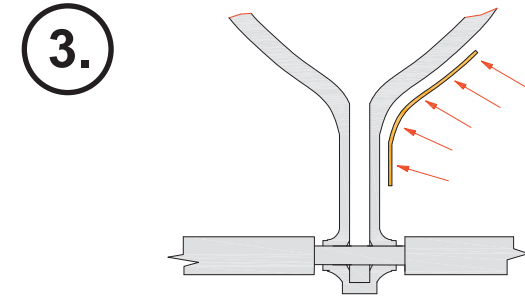
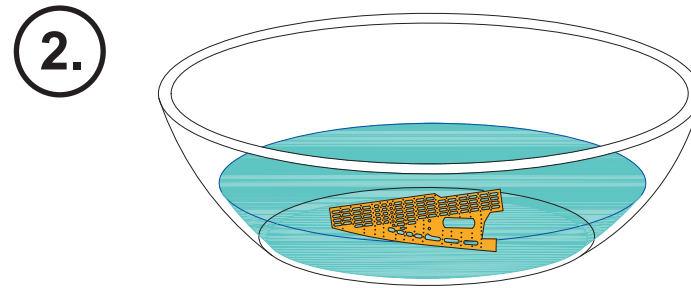
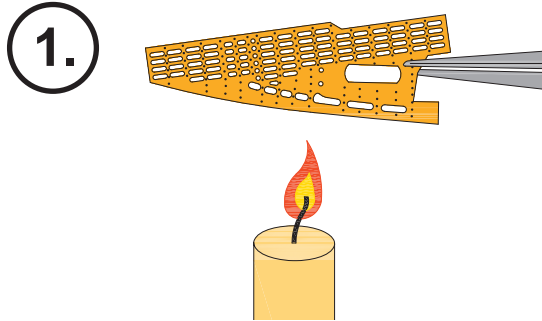
Description of pars PE



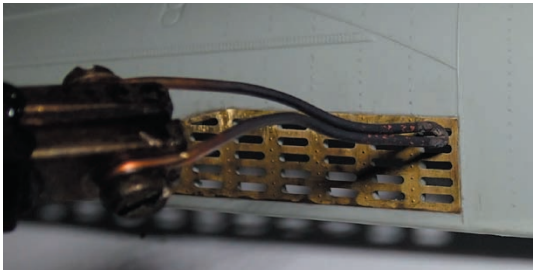
Hull -forming etchings

For a better shaping of etching, it is necessary to heat up plate and then rapidly cool down. etching is soft and well shaped according to the shape of the hull.

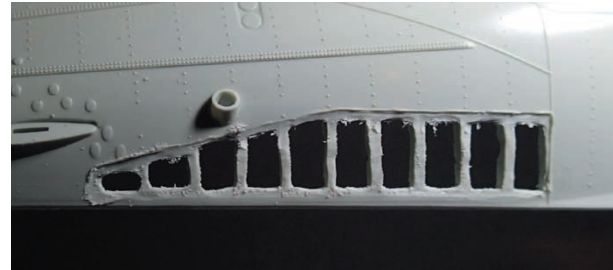
Recommendation: Try these steps to shape a different part of the sheet (the rest).



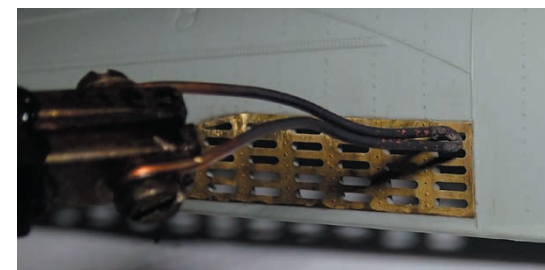
1. fine melting to determine the outline etching (using solder)



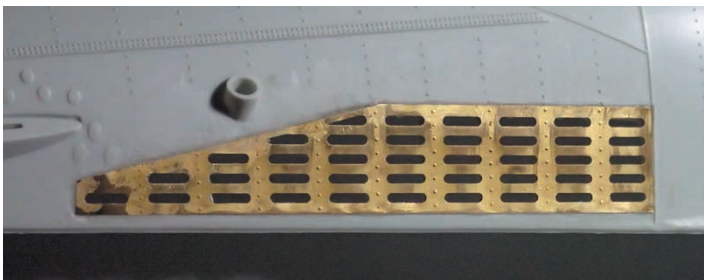
2. formation of holes using a milling machine



3. melting etching into the hull

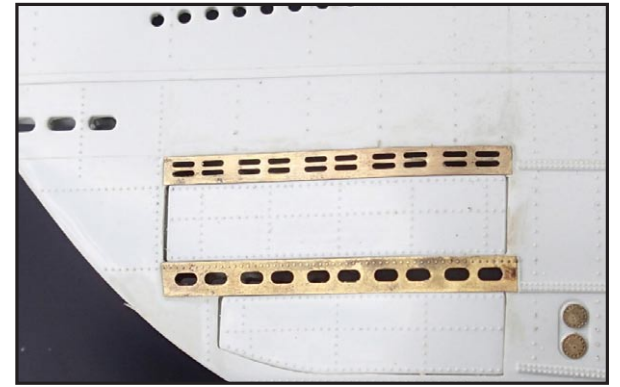
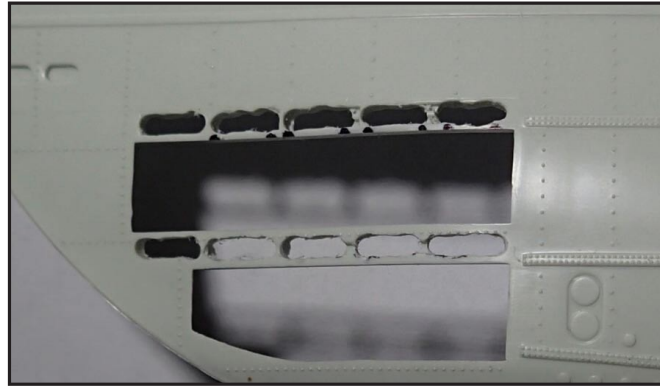
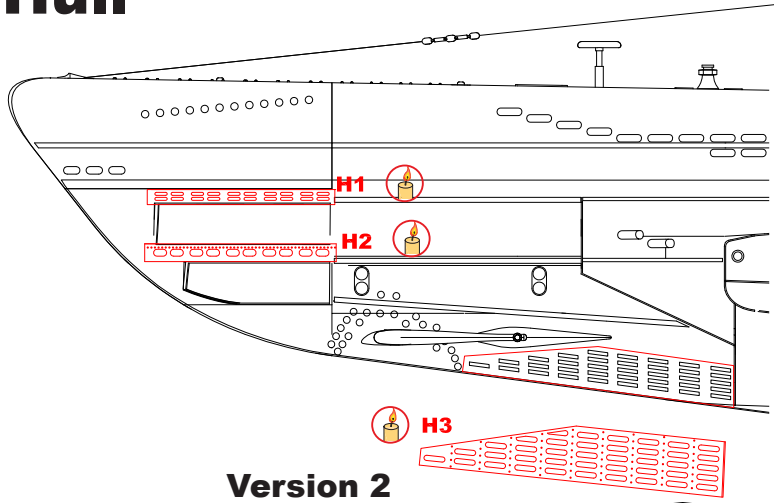


4. gluing and kiting

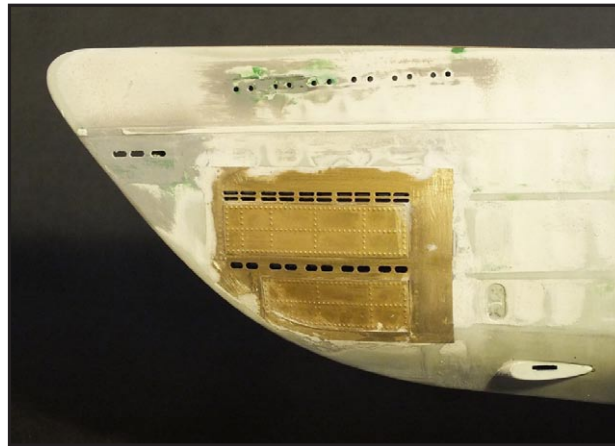
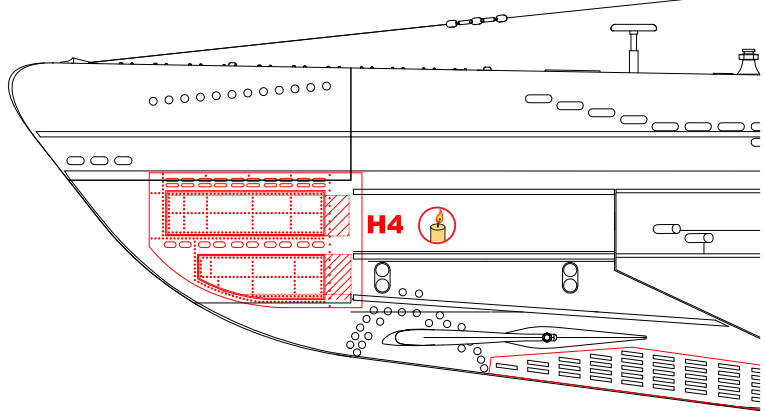


Hull

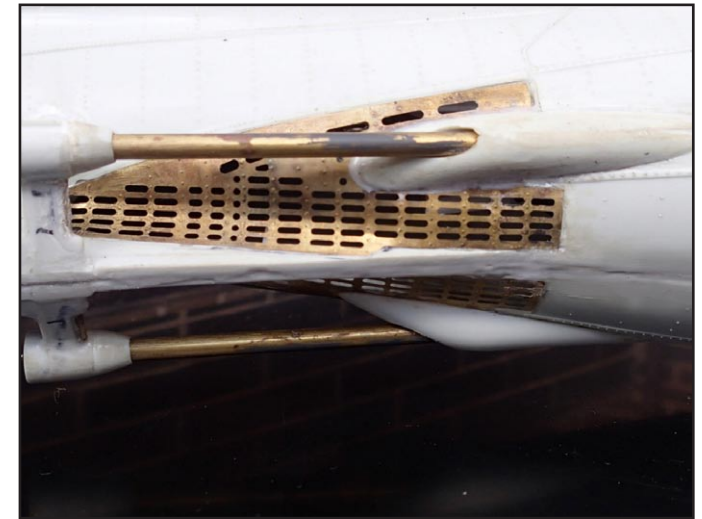
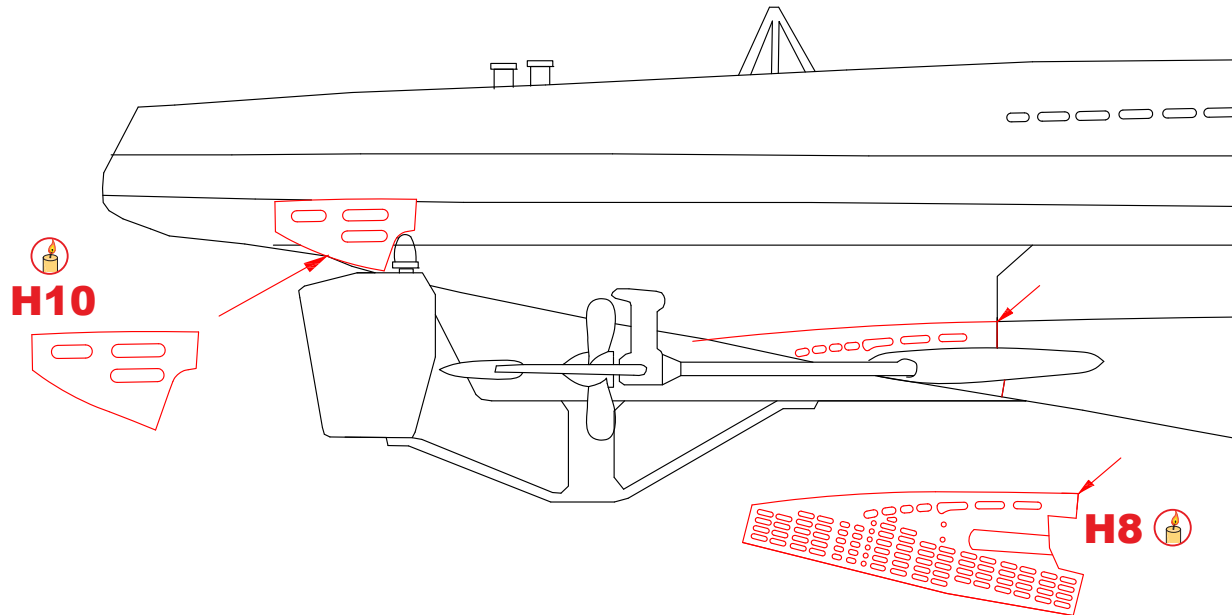
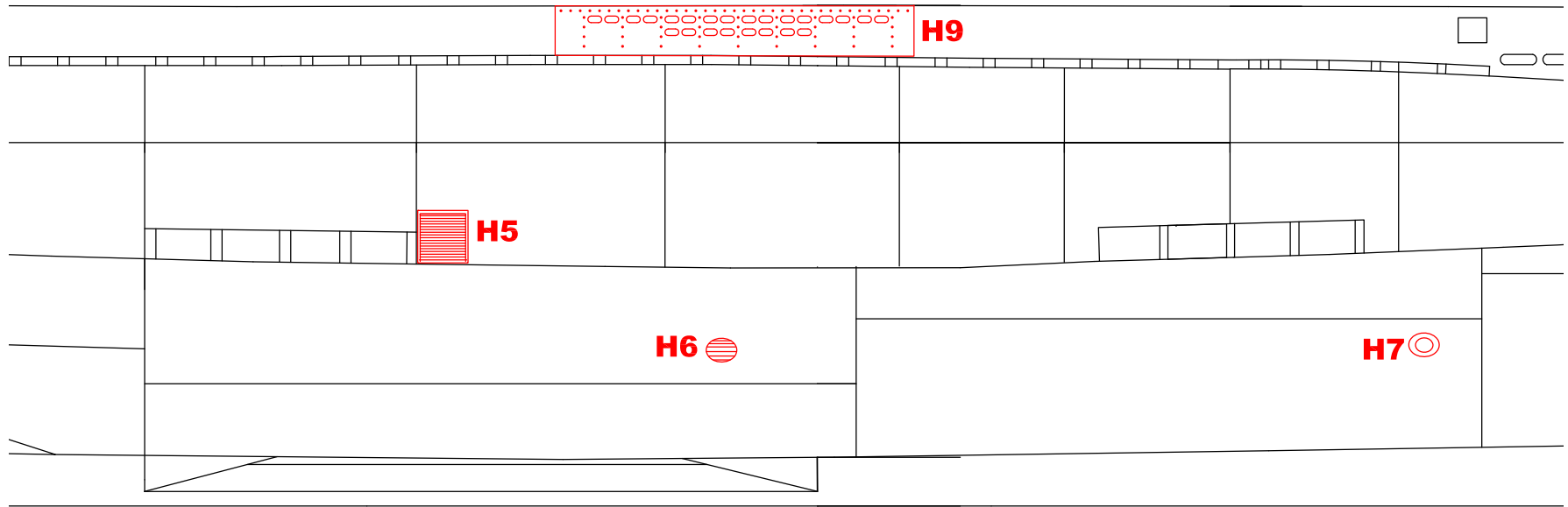
Version 1



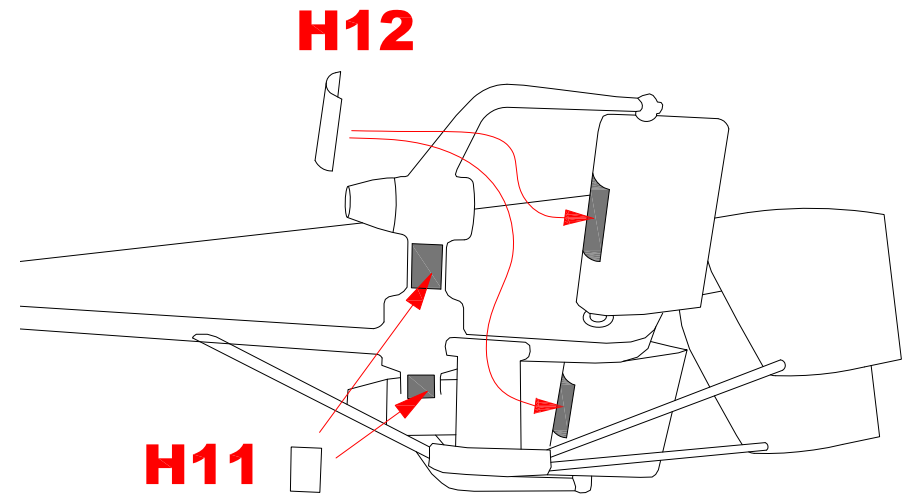
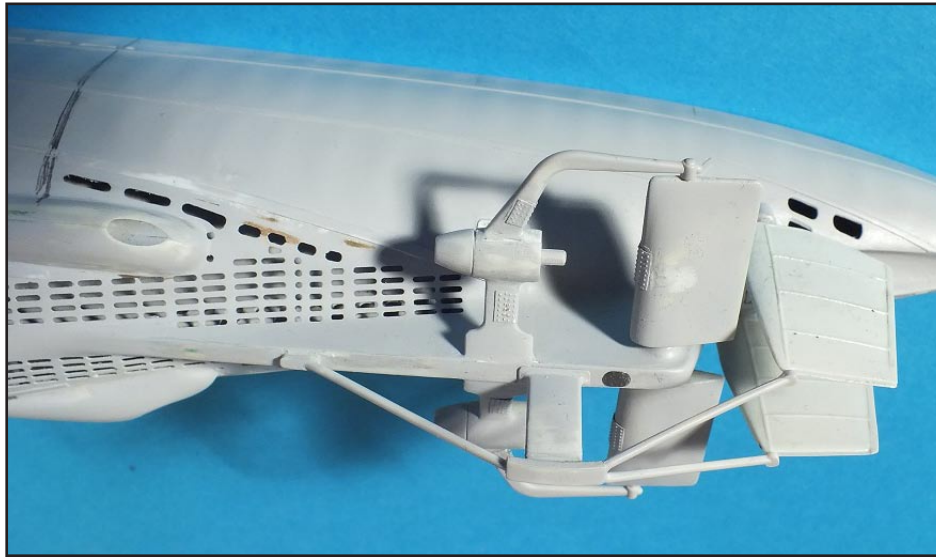
Version 2



Hull



Hull



This piece is for a particular type submarines.

