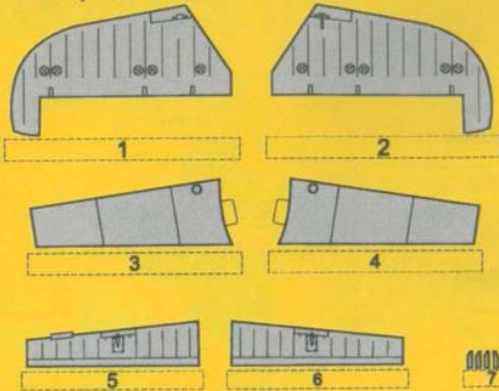


4471
1/48

**TBF-3/TBM-3 Avenger
Control Surfaces**
set for Accurate M., Italeri
and Academy kits



Polyurethane parts PUR

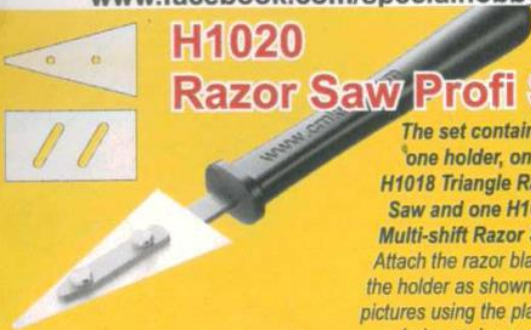
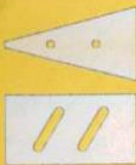


Díly ohnuté popř. pokroucené vlivem teplotních změn a stárnutí materiálu, mohou být narovnány do požadovaného tvaru pomocí proudu teplé vody nebo vzduchu (fén na vlasy). K lepení použít kyanoakrylátové lepidlo! Kontaktní plochy doporučujeme před lepením odmastit. Různé drátky a tyčinky nejsou přiloženy.

Parts slightly distorted and bent owing to temperature changes or due to material aging can be straightened to requested shape by hot water or hot air jet (hair dryer). This process can be repeated till result is entirely satisfactory. For best result use cyanoacrylate glue! Ungreasing contact areas is recommended before gluing. Wires and rods not included.

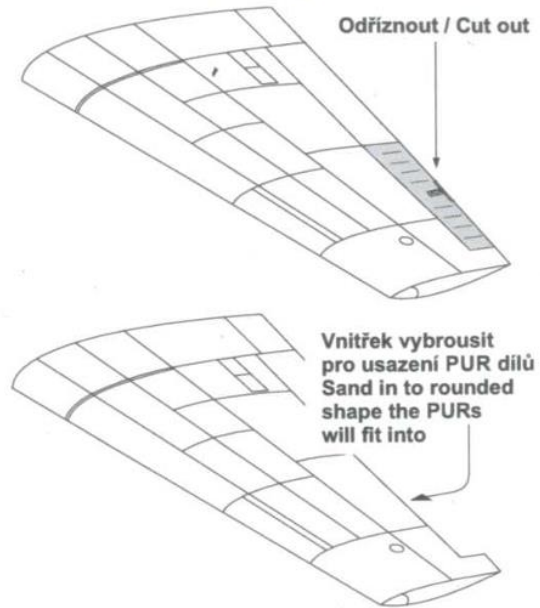
Visit our official website and e-shop at
www.cmkkits.com
www.specialhobby.eu
www.facebook.com/specialhobby/

**H1020
Razor Saw Profi Set**

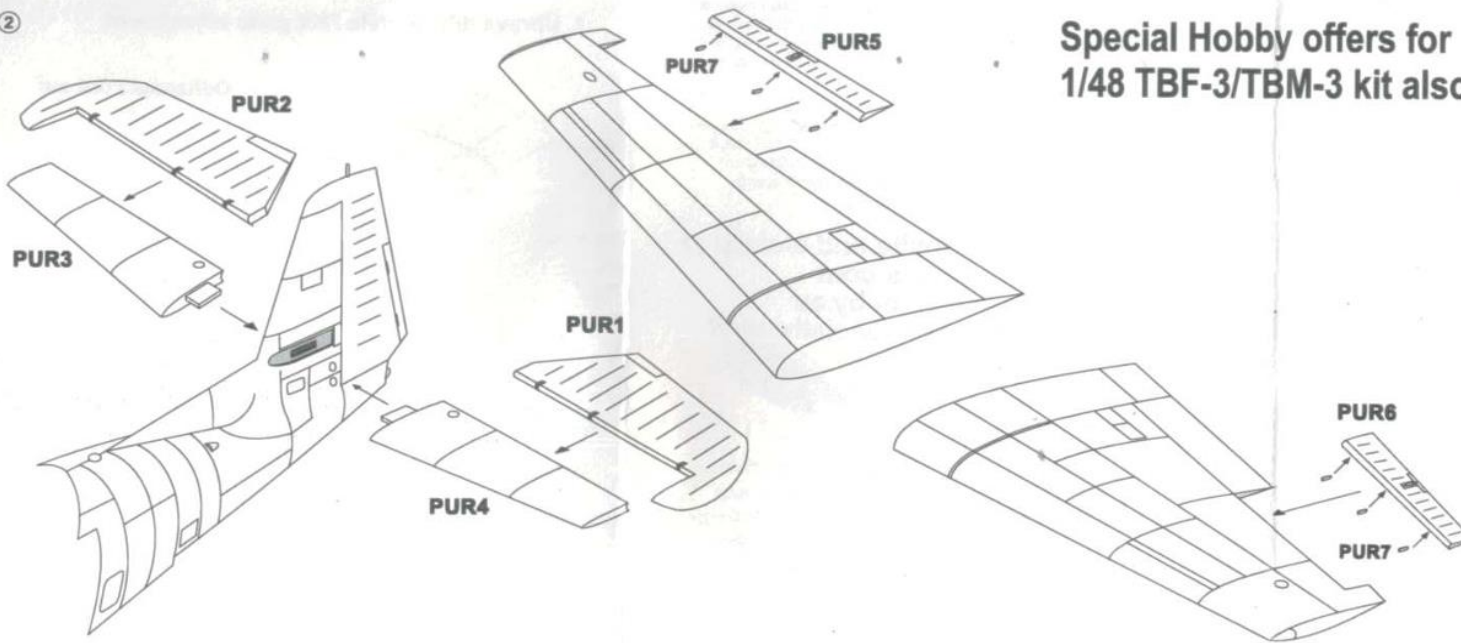


The set contains
one holder, one
H1018 Triangle Razor
Saw and one H1019
Multi-shift Razor Saw.
Attach the razor blade to
the holder as shown in the
pictures using the plate with
holes and screws.

1. Úprava dílů modelu / Kit parts adjustment



②



Special Hobby offers for
1/48 TBF-3/TBM-3 kit also:

4472
1/48
**TBF-3/TBM-3 Avenger
Paddle Blade Propeller
Correction Set**
for Accurate M. and Academy kits

© Special Hobby 2024

4458
1/48
**2000 Lb Bomb AN-M66A2
equipped with Fin Assembly
M116A1 (2 pcs.)**

PUR - Polyurethane parts

Decals
PE - Photo-etched parts

3D-Printed Parts

© Special Hobby 2024