

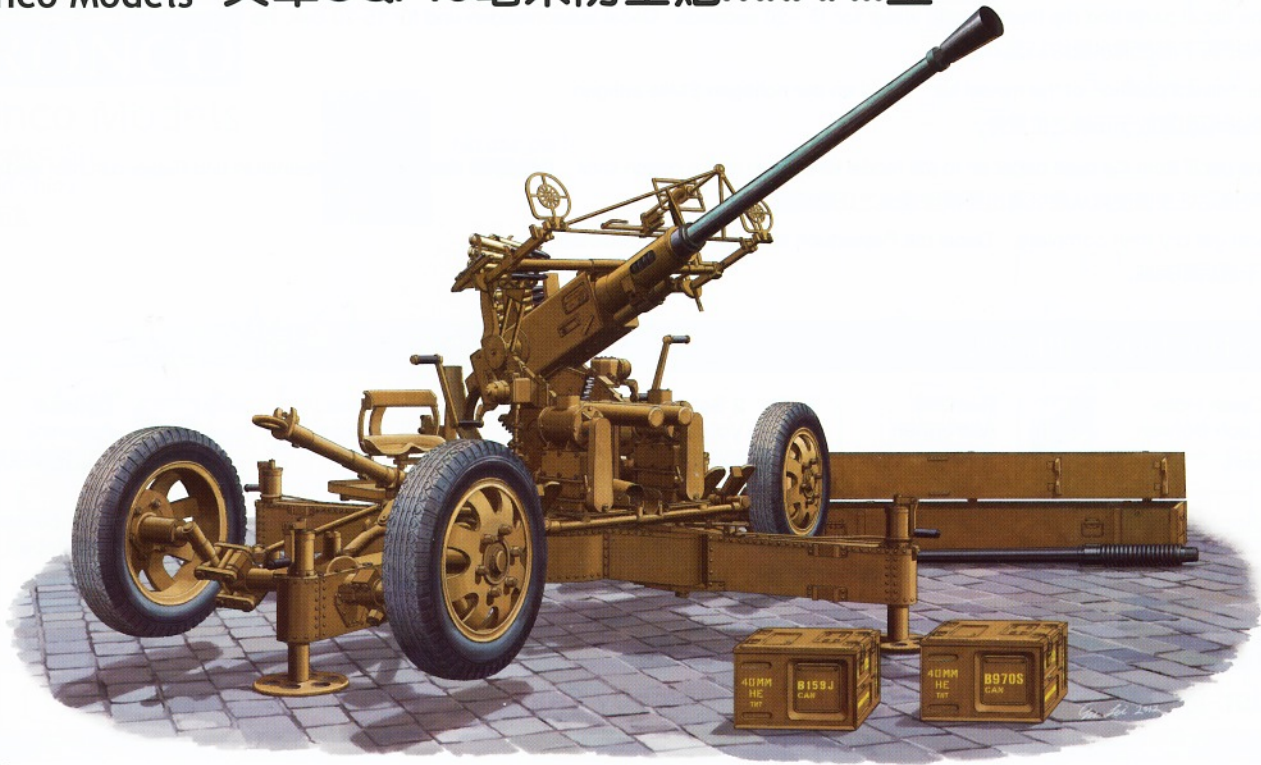


Bronco Models

Kit No.CB-35111

OQF 40mm Bofors Anti-Aircraft Gun Mk. I/III(British Army) 1/35 SCALE

英军OQF40毫米防空炮Mk. I/III型



The Panzerkampfwagen II was a small reconnaissance tank, built as a result of delays with larger PzKpfw III and IV in the mid-1930's. First produced in The British Army purchased several Polish-built 40mm Bofors guns in 1937, designating them the Ordnance Quick Fire (OQF) 40mm MkI. Suitably impressed with this weapon, a production licence was acquired from Bofors and the gun was produced at Royal Ordnance factories in Britain. The gun was changed from metric to Imperial measurements, and several design improvements were made to facilitate mass production. This British built gun was designated the OQF 40mm MkIII, and became the standard light anti-aircraft gun of the British Army. It was designed to operate with the Kerrison Director, a mechanical analog computer which automatically laid the gun after simple calculations had been dialed in. A back-up sight ring and post, known as the "Pancake", was also provided, This was later used as the primary sight as the Kerrison proved too complicated to use in many situations and required constant fuel supplies for its electrical generator. In 1943 the Pancake sights were replaced by the Stiffkey sight which offered lead-correction, the sight was operated by an additional crew member. British guns were fitted with an armour shield to protect the crew from shell splinters and small arms fire. In British service the Bofors was usually towed by a 6x4 Morris tractor, later in the war the gun was mounted on a 4x4 Morris truck.



Das britische Heer beschaffte 1937 einige in Polen gebaute 40mm Bofors Geschütze und bezeichnete sie als Ordnance Quick Fire (OQF) 40mm Mk I. Beeindruckt von der Waffe, erwarb man die Lizenz zur Herstellung in England. Außer der Umstellung vom metrischen auf das angelsächsische System unternahm man einige Verbesserungen zur Vereinfachung der Massenproduktion. Die Bezeichnung änderte sich in OQF 40mm Mk III und das Geschütz wurde zu Standardwaffe der leichten englischen Flugabwehr. Dabei arbeitet man auch mit dem Kerrison Richtgerät, einem mechanischen Analogrechner, welcher die Kanone nach Dateneingabe ausrichtete.

Short Story by Phil Greenwood



Dazu gab es noch den Rundvisiering mit Peilstab. Diese beiden wurden später grundsätzlich zur Zielerfassung verwendet, da sich das Kerrison Gerät häufig als zu kompliziert erwies und auch ständig Brennstoff für den elektrischen Generator benötigte. Eine große Hilfe war das ab 1943 verwendete Stiffkey Trapezvisier, welches aber noch einen zusätzlichen Bediener erforderte. Die britischen Geschütze hatten ein Schutzschild gegen Splitter und Handwaffenfeuer. Zum Transport diente üblicherweise ein 6x4 Morris Zugmaschine. Im Verlaufe des Krieges wurde die Bofors auch auf Morris 4x4 LKW montiert.

© Translation Michael Knoblich ACADEMY EUROPE

1937年英国军队购买了数门波兰造的40毫米博福斯式高射炮作测试,并定型号为(OQF)40毫米Mk.I型。为了合法地生产这种武器,他们从原产的瑞典保福斯公司处获得了生产许可证,这炮就顺理成章合法地在皇家兵工厂被生产出来了。这些由英国所生产的高炮被改为英制测量制式,并且修改了部份设计以适合大量生产。其后被定型为OQF 40mm Mk III型,成为了英国军队标准制式的高射炮。它被配置了一具叫'基里逊'监测器与其一起运作。炮上还装置了一组圆环型称作'薄煎饼'的瞄准器。但在实战下证明'基里逊'监测器太复杂以及在燃料供应不足的问题上未能确保它的发电机能否可正常运作使用。在1943年'薄煎饼'式瞄准器被最佳的Stiffkey式瞄准器替换,但这新的瞄准器需由另一个额外的组员负责操控。英国人更为这门火炮装上装甲防盾以保护操作人员免受破片或小型武器的伤害。通常在英军服役之保福斯高炮是由一台6x4的'摩利士'拖曳车拖曳,战争末期则改由4x4的'摩利士'卡车所拖曳。



ILLUSTRATION 图示说明:

CORRECT METHOD FOR APPLYING DECALS : HINWEISE ZUM ANBRINGEN DER DECALS :

正确使用水贴纸的方法:

1. Clean model parts surface with wet cloth. Entsprechende Stellen am Modell feucht reinigen.
将需要贴水贴之部位表面擦干净。
2. Cut out the decal parts and dip them in cold water for 15 -20 seconds. Decal ausschneiden und für 15-20 Sek. ins Wasser legen.
将所需之贴纸剪下泡在清水里约15至20秒。
3. Place it on correct position of the model kit. Decal an der richtigen Stelle auflegen.
将湿透之贴纸取出置放于正确之位置旁。
4. Slide off the decal from the base paper on to the model kit surface with a cotton stick. Decal mit Wattestäbchen festhalten und Papier darunter wegziehen.
用棉花棒轻推贴纸表面使其从底纸滑出至模型表面之正确位置。
5. When decal get dry then complete. Decal mit Papiertuch andrücken und trocknen.
待其自然干透后即完成。

ICON INSTRUCTION: 图标说明:



Open Hole
Loch bohren
钻孔



Remove
Abtrennen
切除



2 Sets needed
Vorgang wiederholen
同样的制作二组



Bend
Biegen
曲折



Optional
Auswahl
可以选择采用



Apply Decal
Decal anbringen
贴水贴纸



Instant Glue For Metal
Sekundenkleber verwenden
瞬间接着剂,金属用



Fill Hole
Verspachteln
把孔填平



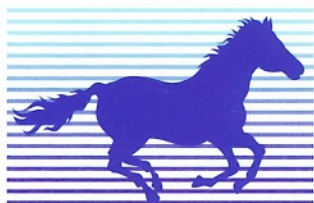
Do not cement
Nicht kleben
不用粘合

COLOR SUGGESTION: FARBTABELLE: 涂装指引:

Color 涂料表	MR. Hobby	Hobby Color	Humbrol	Tamiya
Steel Stahl 黑铁色	H-18	C-28	53	/
Flat black Mattschwarz 消光黑	H-12	C-33	33	XF-1
Tyre black Reifenschwarz 轮胎黑	H-77	C-137	85	/
Semi-gloss black Schwarz Seidenmatt 半光黑色	/	C-82	/	/
Olive drab Oliv draun 橄榄褐	H-78	C-38	66	XF-62
Copper 铜色	H-10	C-10	12	XF-6

READ BEFORE ASSEMBLING: VOR ZUSAMMENBAU LESEN: 组装必读:

- Carefully Study instruction before assembling. Anleitung studieren und verständlich machen. 组装前请阅读清楚制作指引。
- Keep plastic model glue and tools away from children. Kleber, Farben, Werkzeuge und Plastiktüten von Kindern fernhalten. 胶水,油漆及工具勿让小孩接触。
- Do not use cement or paint near open flame or sparks. Kleber/Farbe nicht in Nähe von offenen Flammen. 胶水及油漆勿接触火种。
- Do not work in closed room. Nur in ausreichend belüfteten Räumen arbeiten. 勿在密封地方制作模型。



BRONCO

Bronco Models

Copyright © 2012

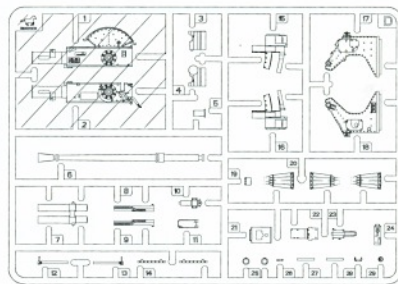
Made in China

中国制造

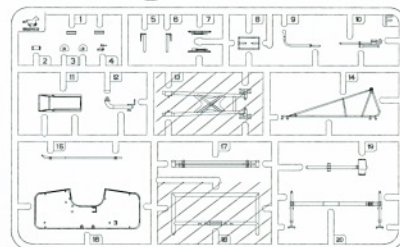


No use parts
不要部件

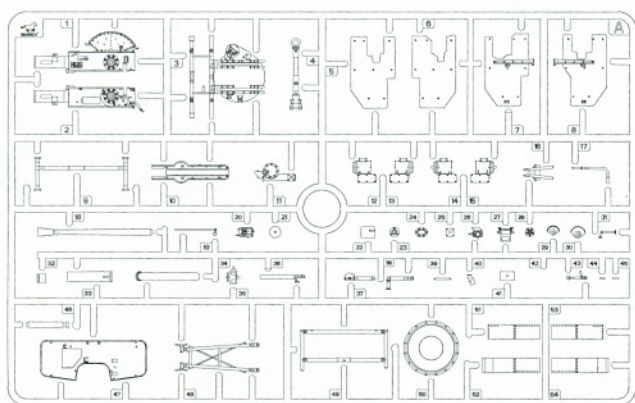
Ⓓ × 1



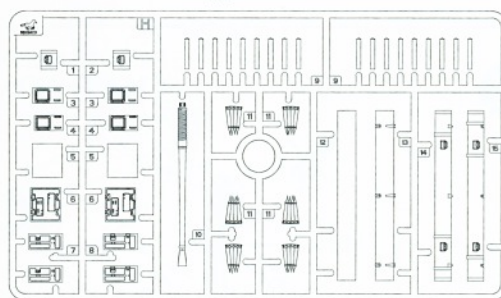
Ⓕ × 1



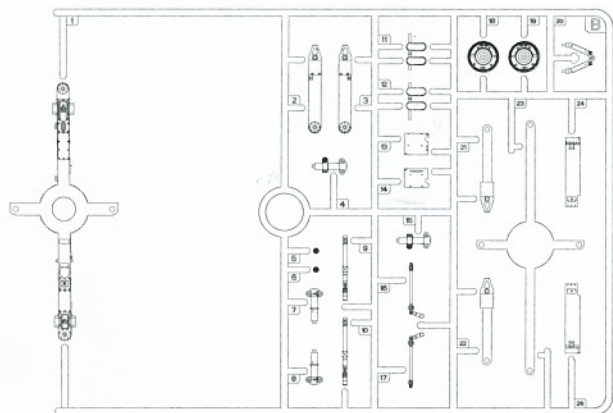
Ⓐ × 1



Ⓗ × 1



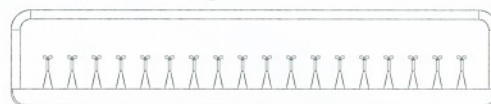
Ⓑ × 1



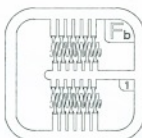
Ⓜ × 4



Ⓚ × 1



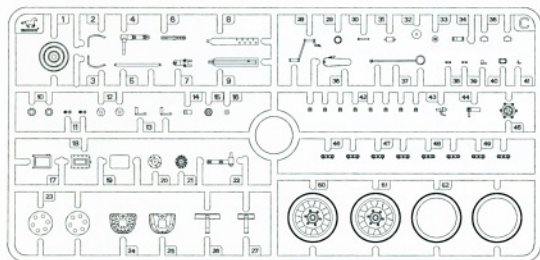
Ⓕb × 1



Ⓖ × 1



Ⓒ × 2



Ⓟ × 1



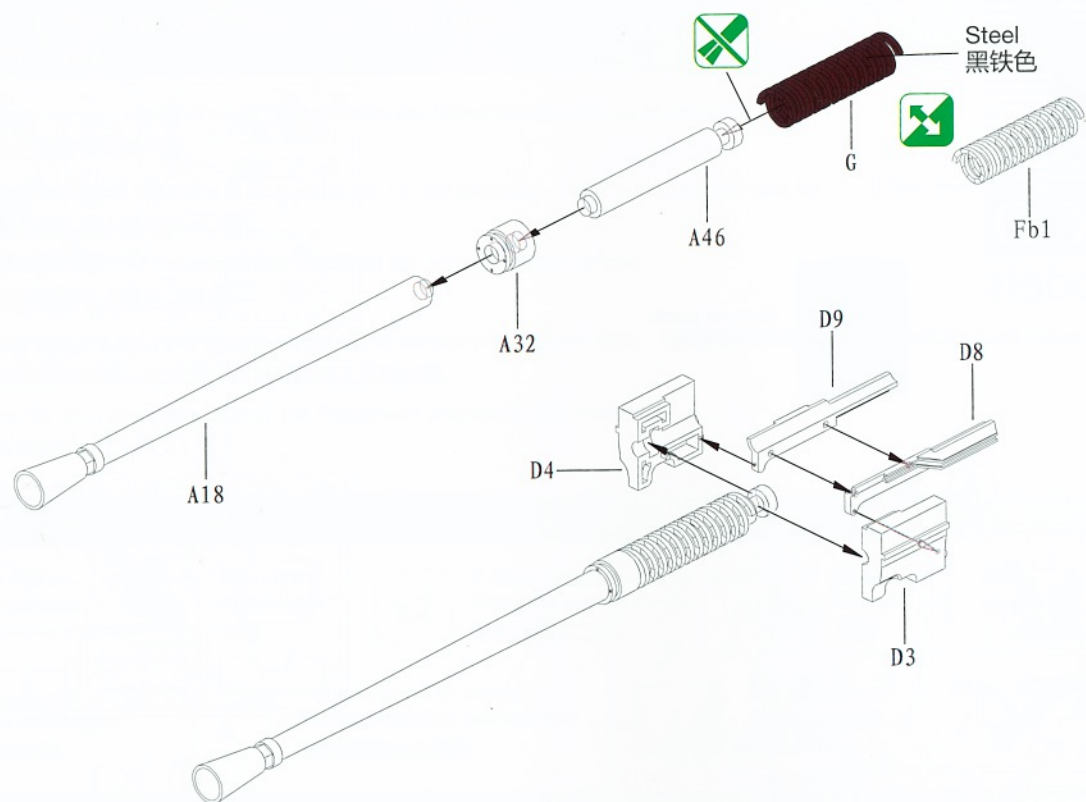
DECAL × 1



CB35111

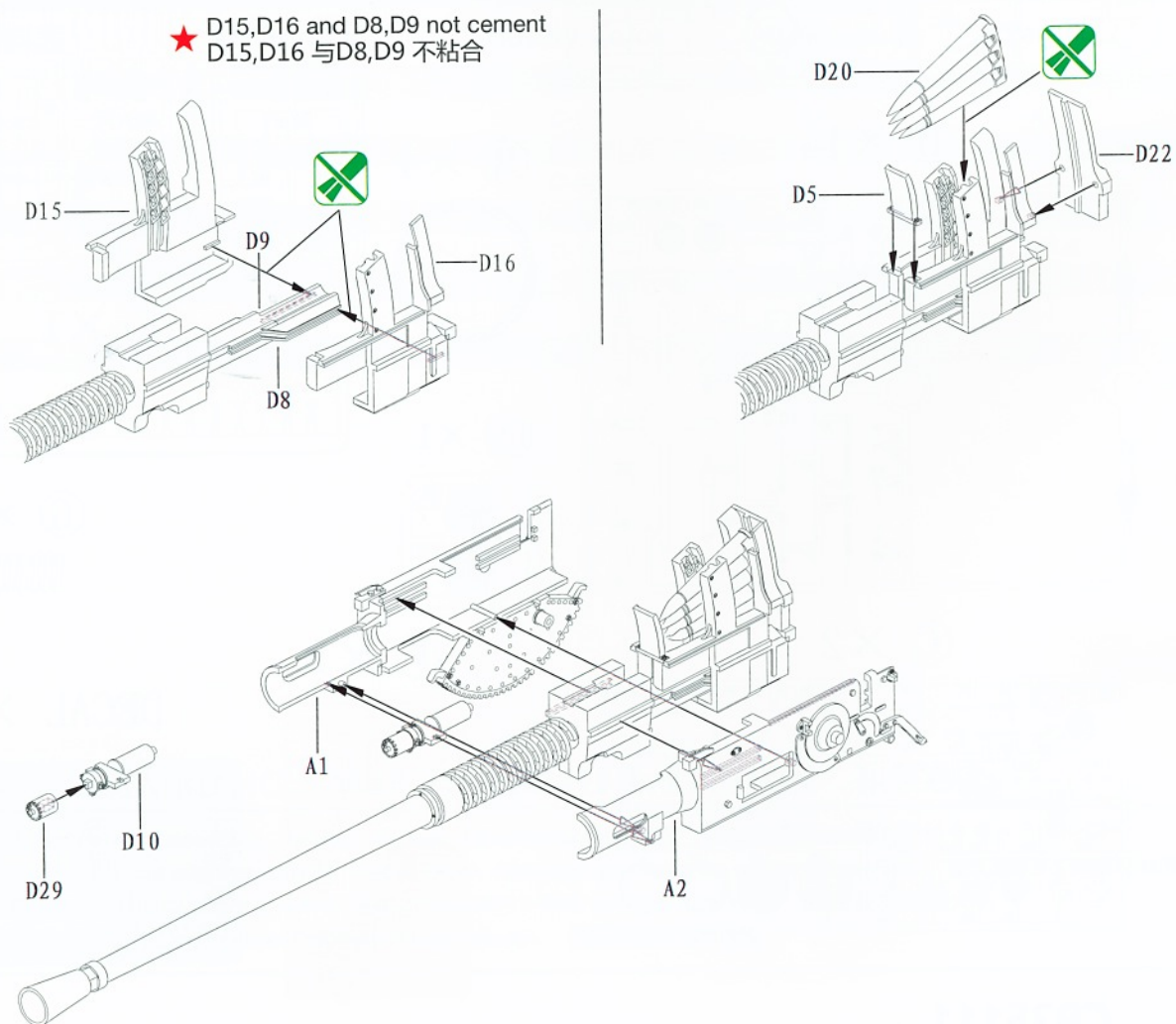
ILLUSTRATION 图示说明:

1

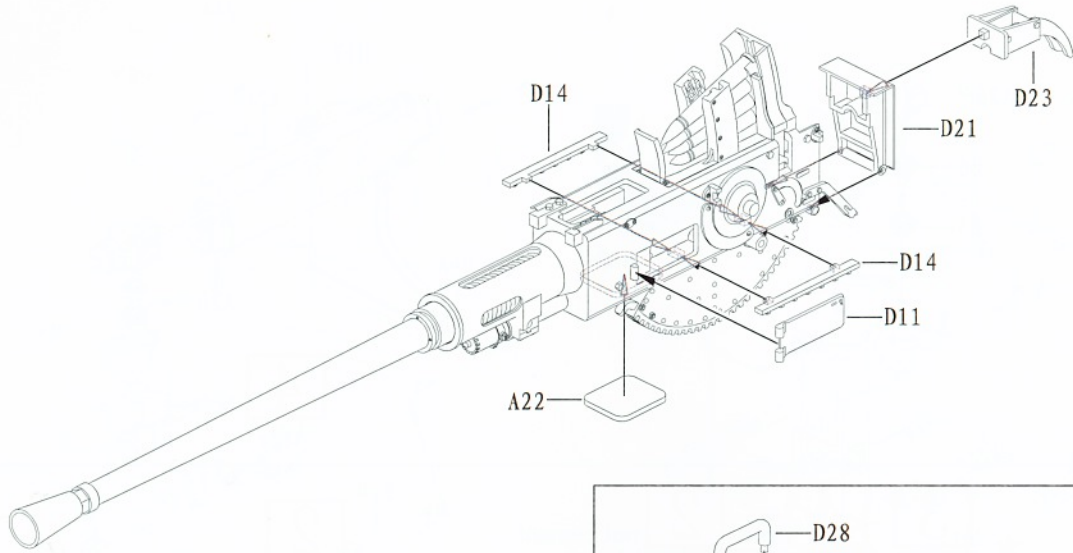


2

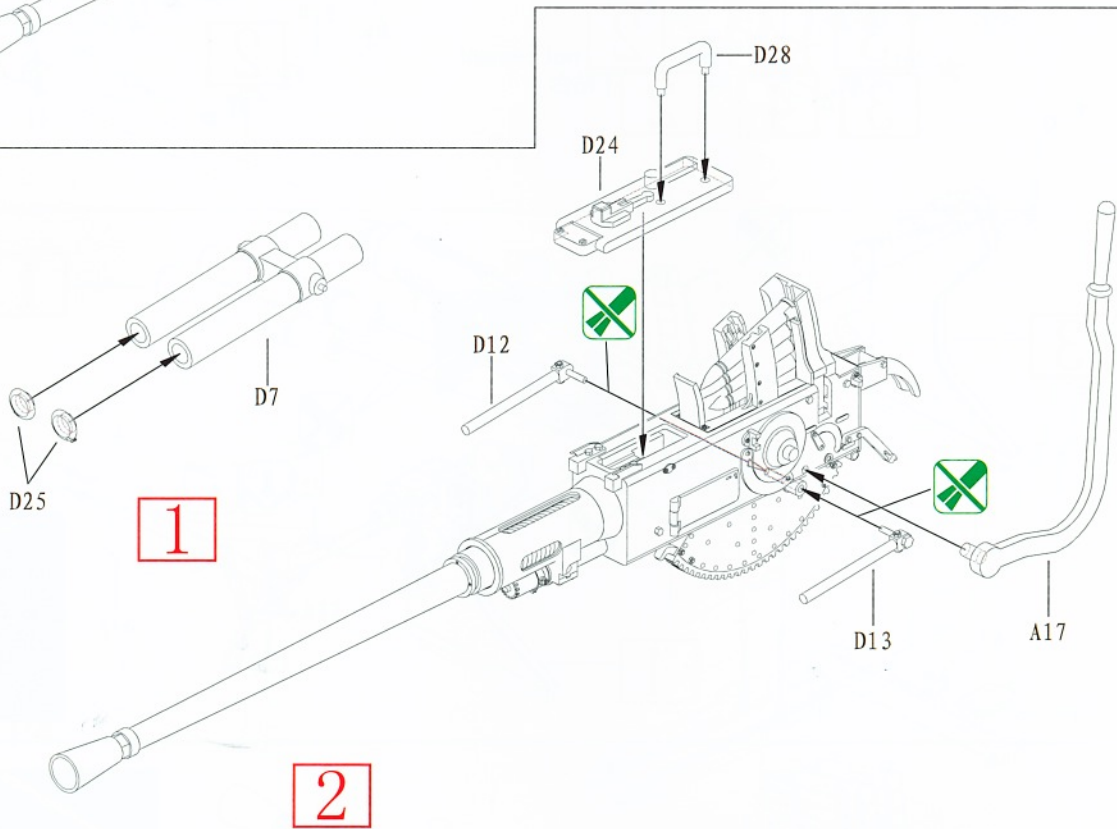
★ D15,D16 and D8,D9 not cement
D15,D16 与 D8,D9 不粘合



3



4



5

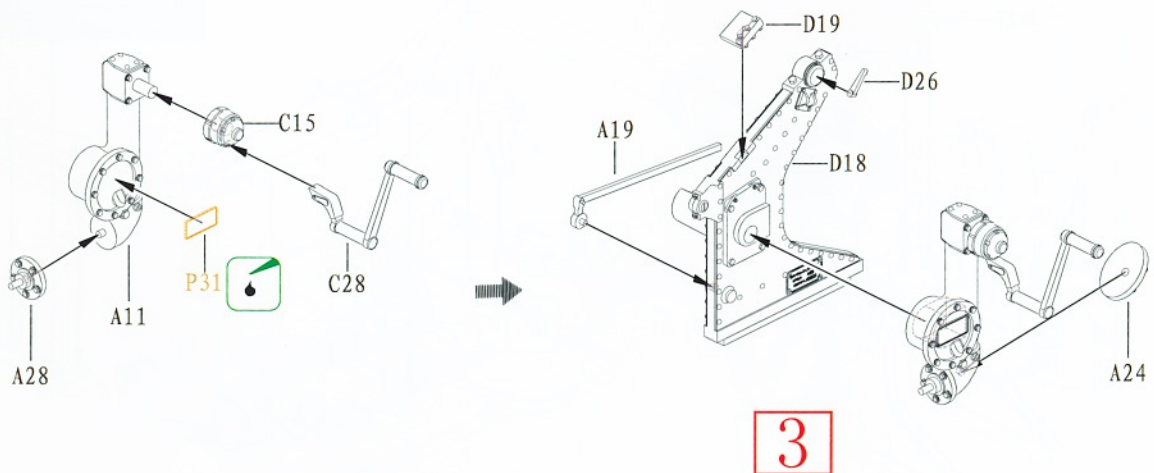
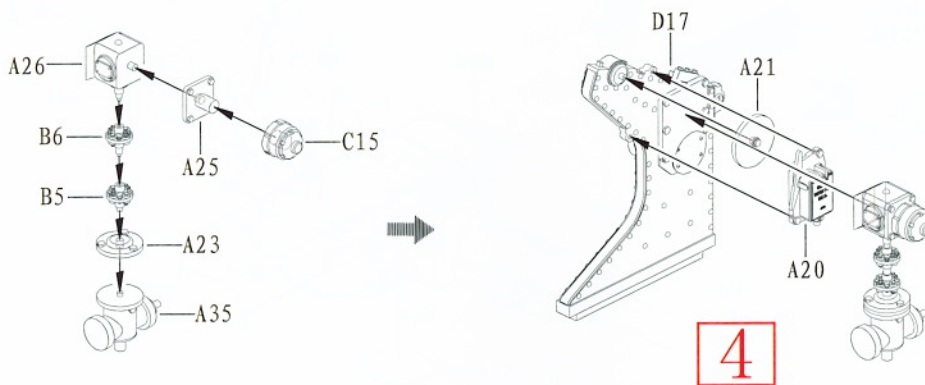


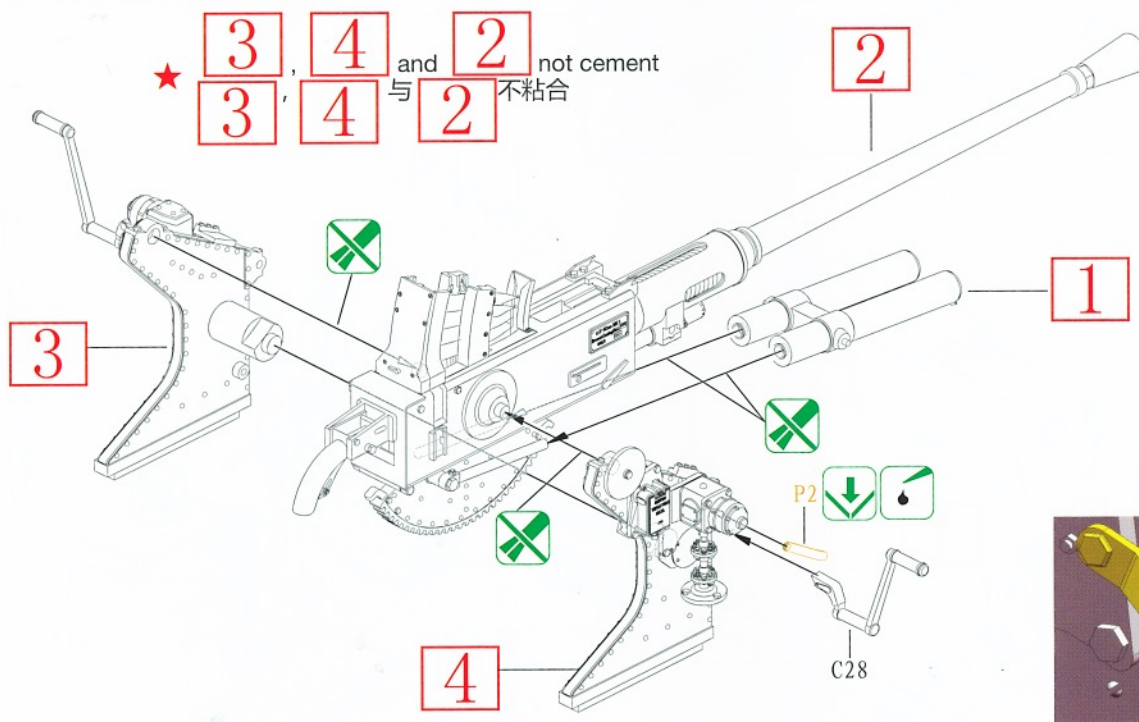
ILLUSTRATION 图示说明:

6

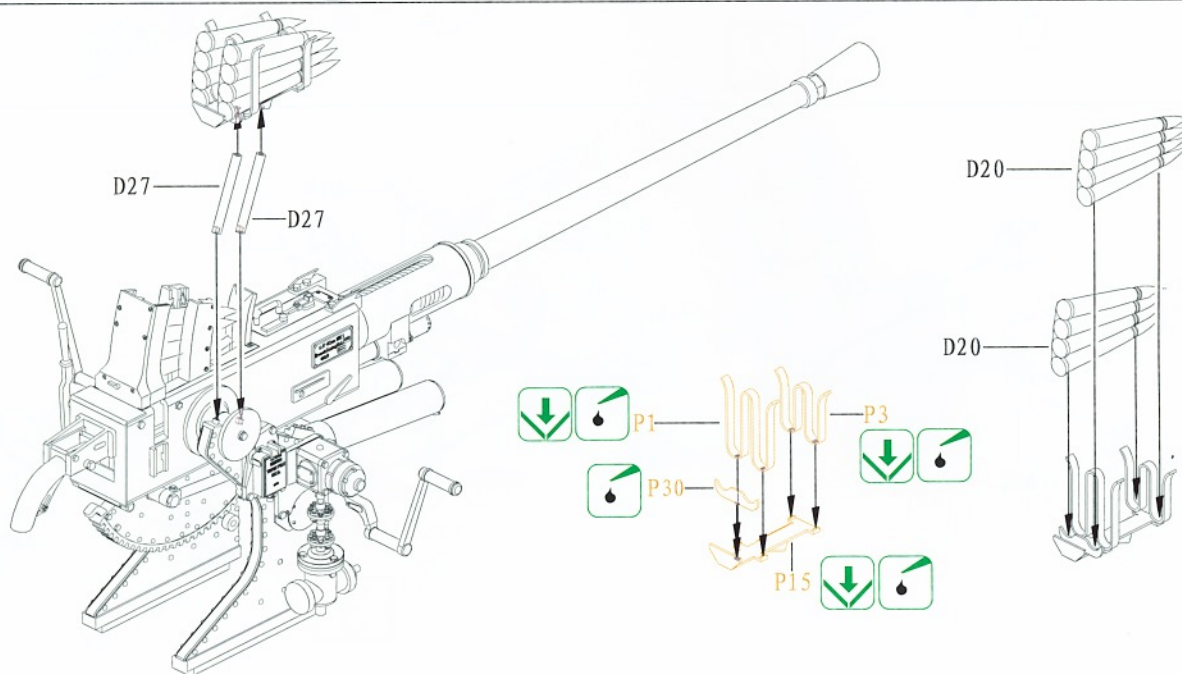


4

7



8



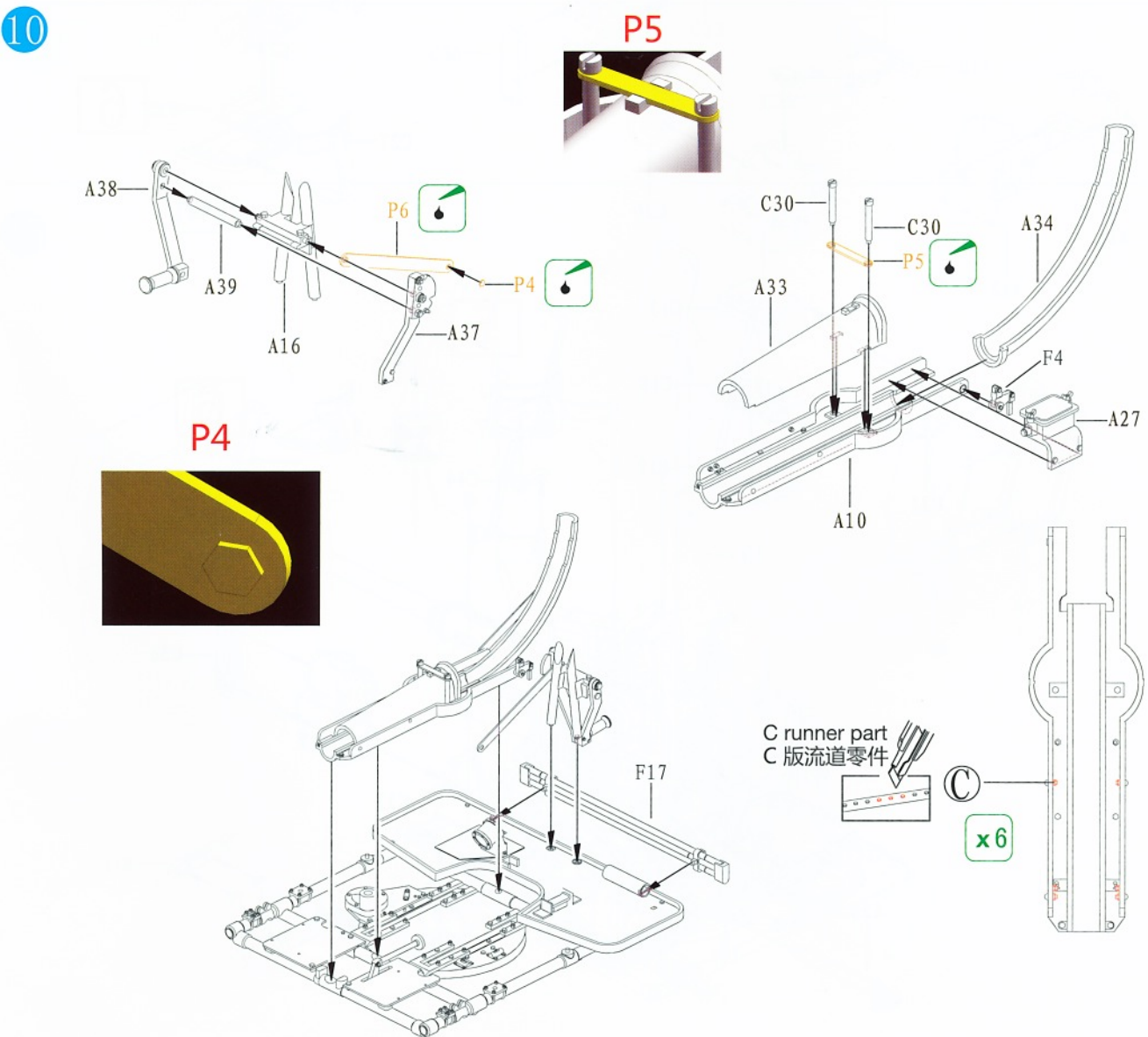
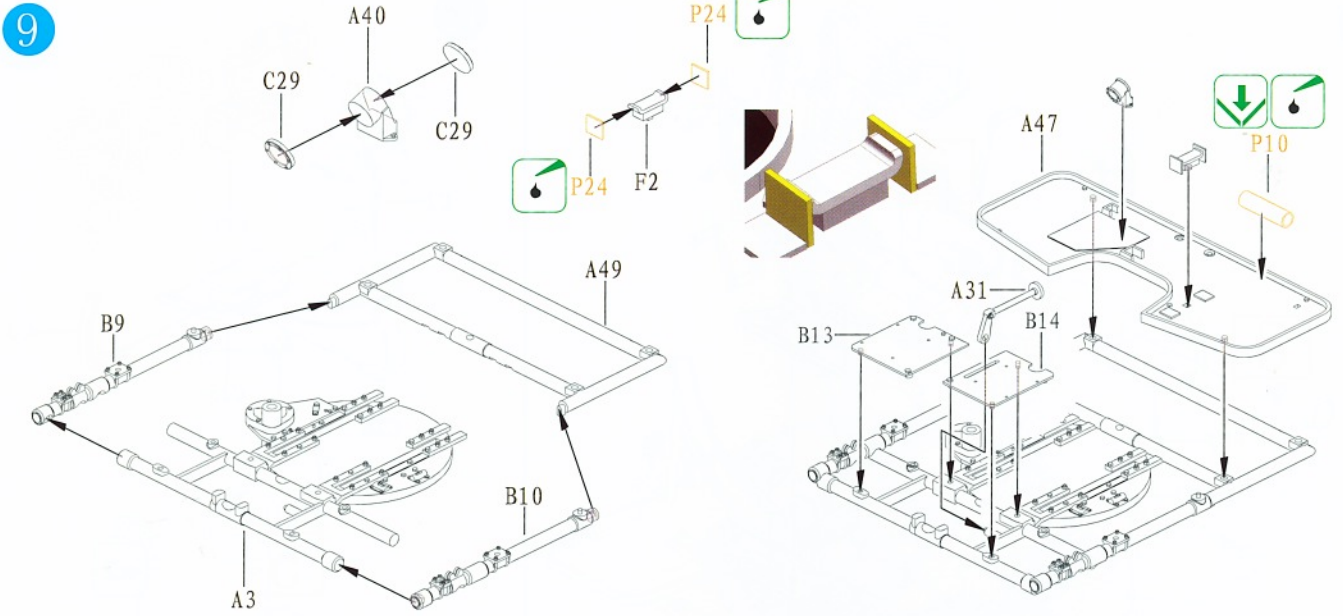
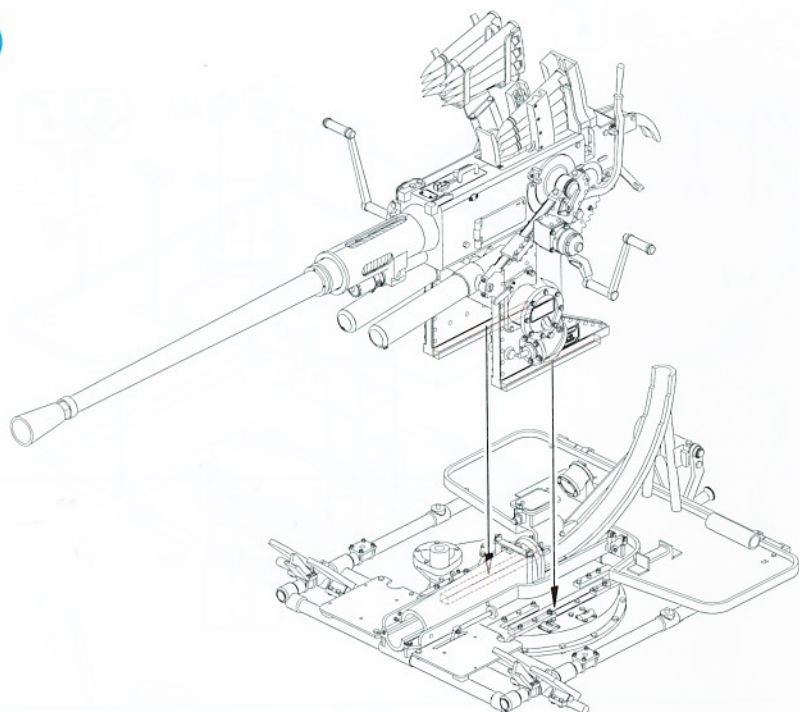
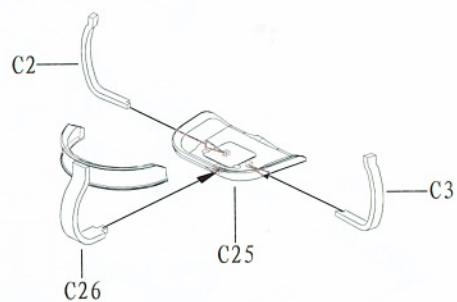


ILLUSTRATION 图示说明:

11



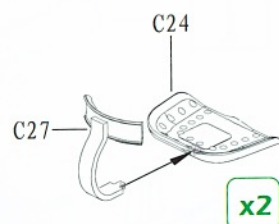
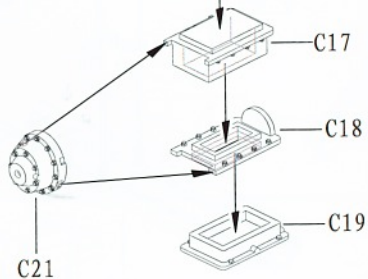
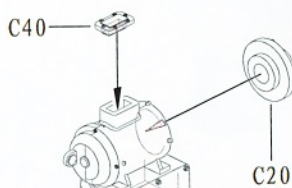
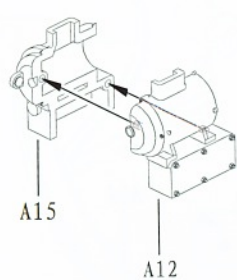
12



5

x2

13



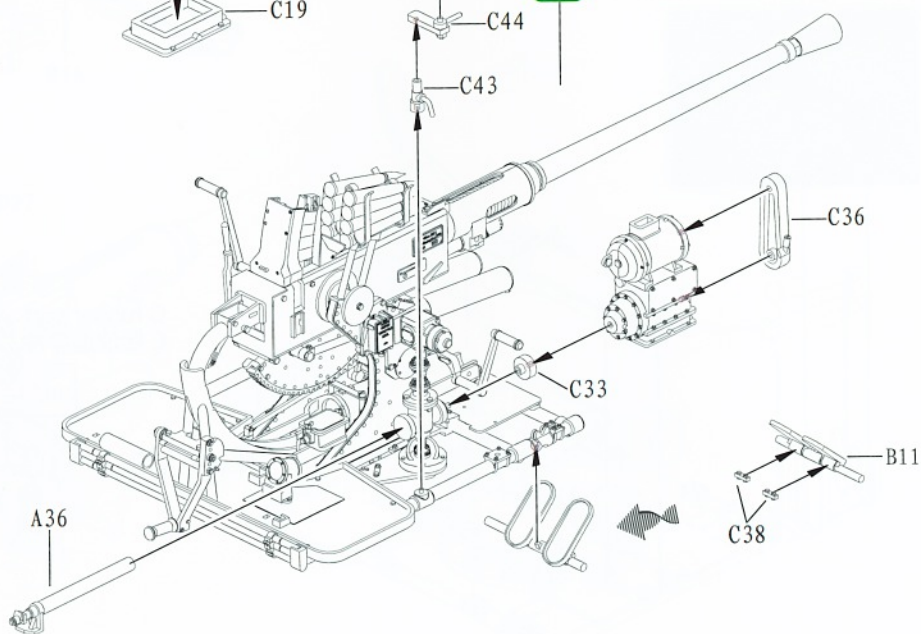
6

x2

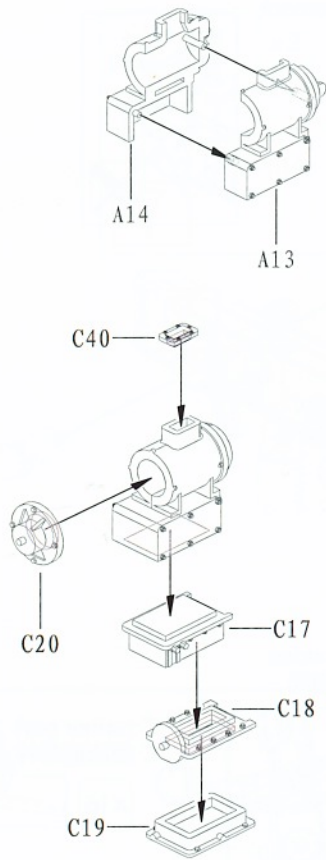
5



6



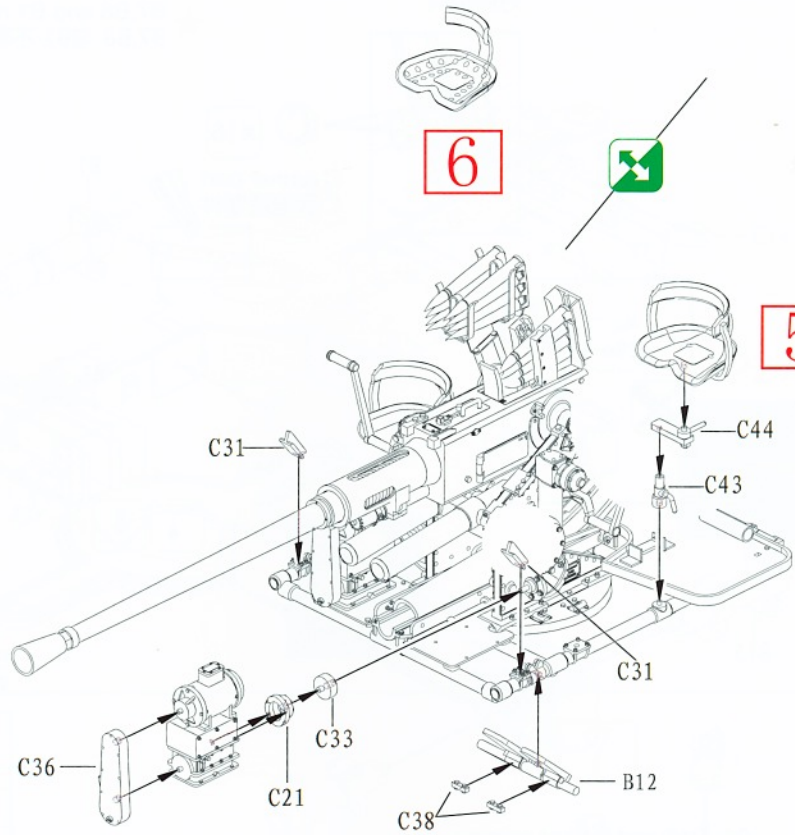
14



6



5



15

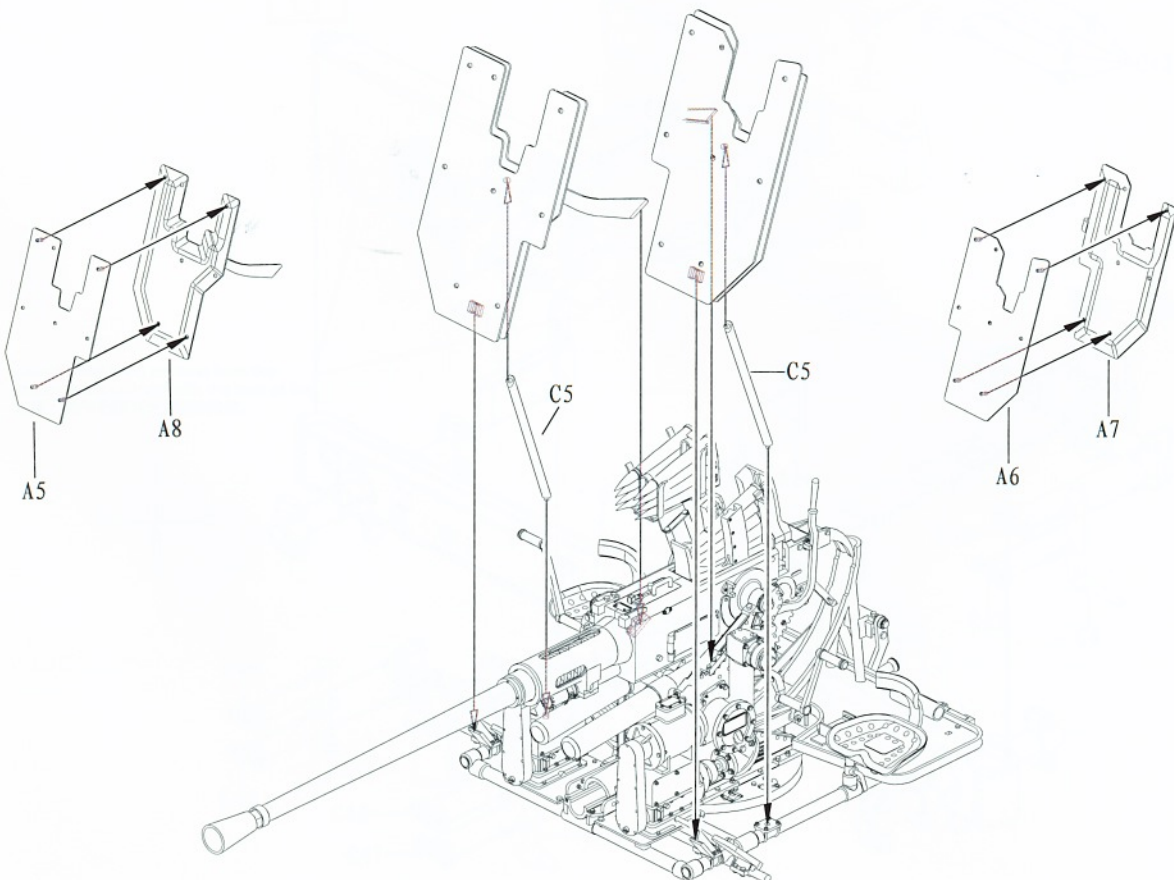
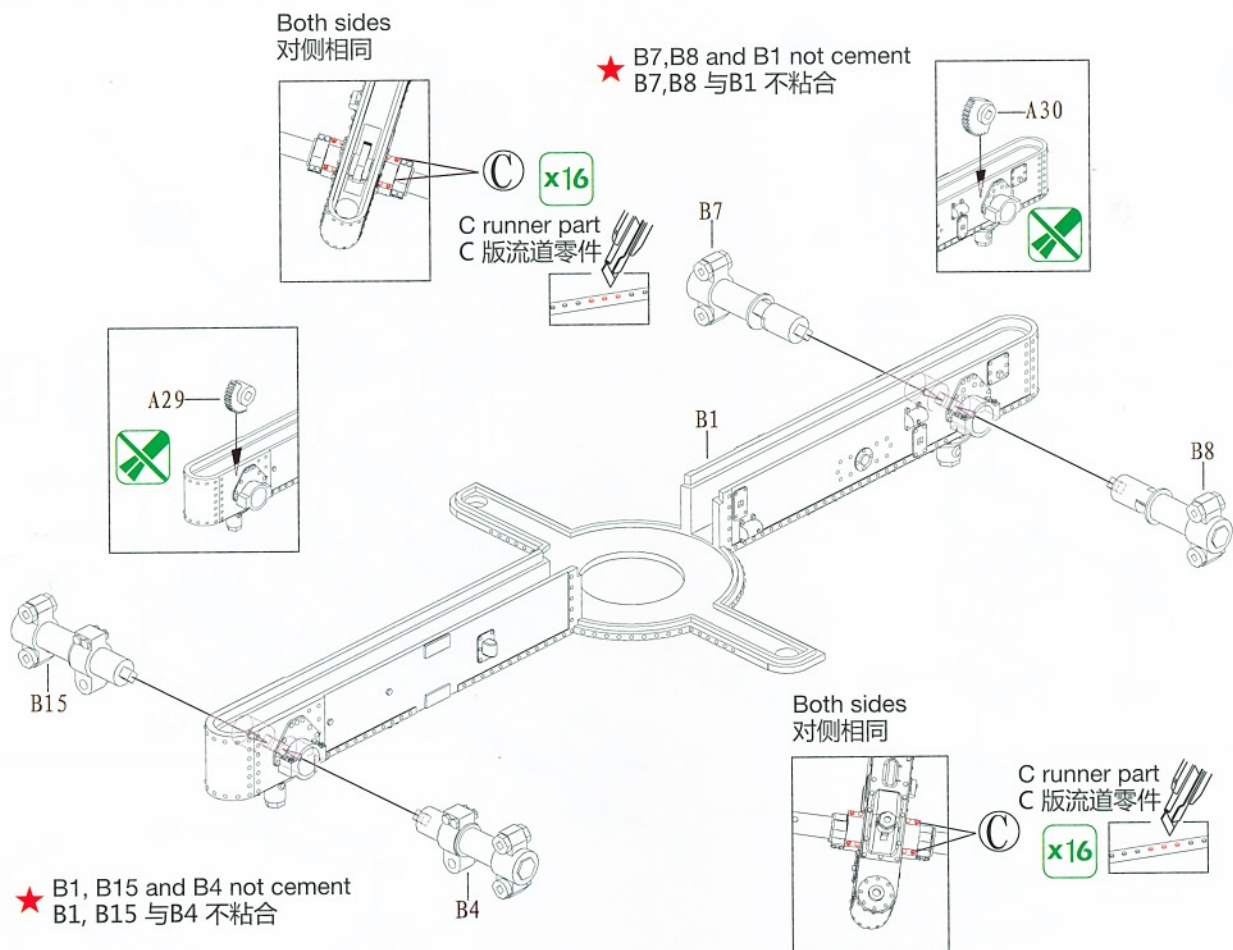
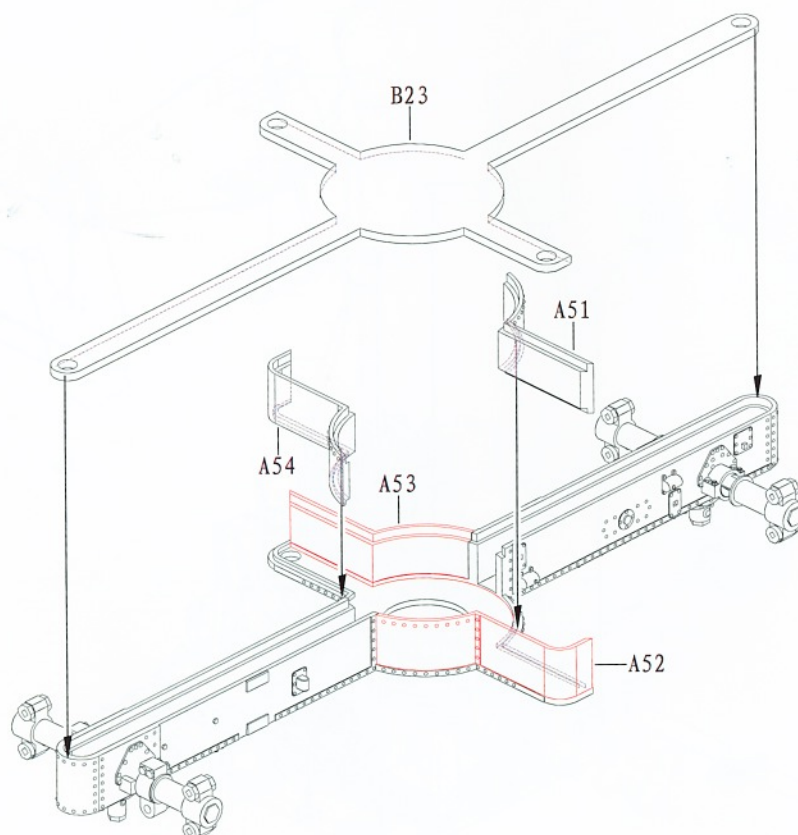


ILLUSTRATION 图示说明:

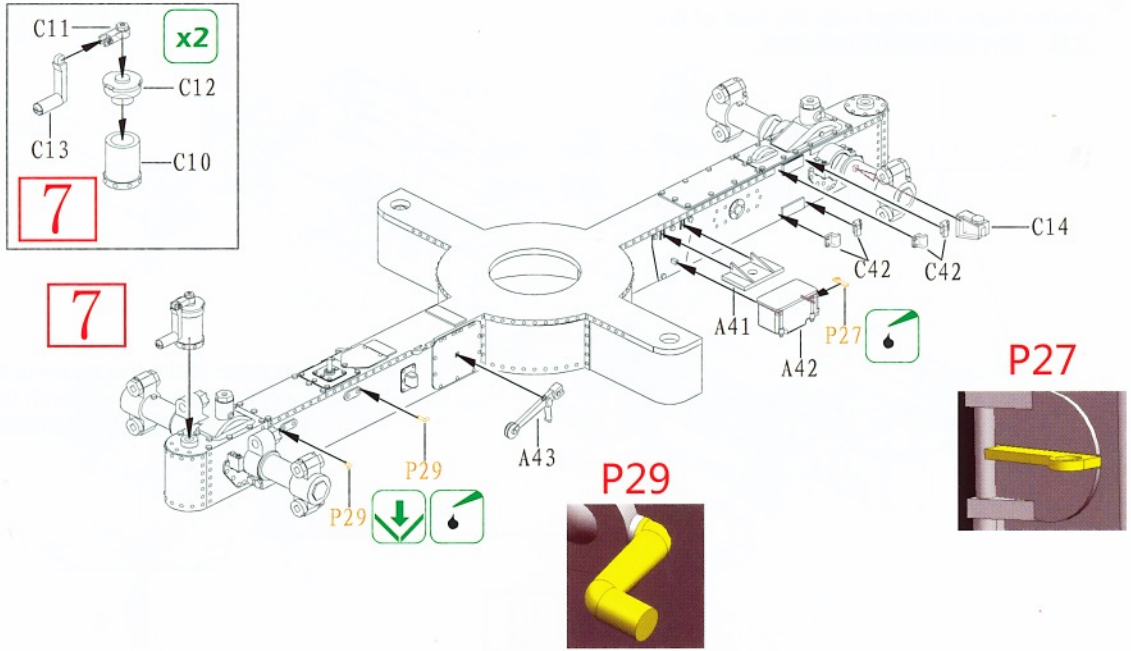
16



17



18



19

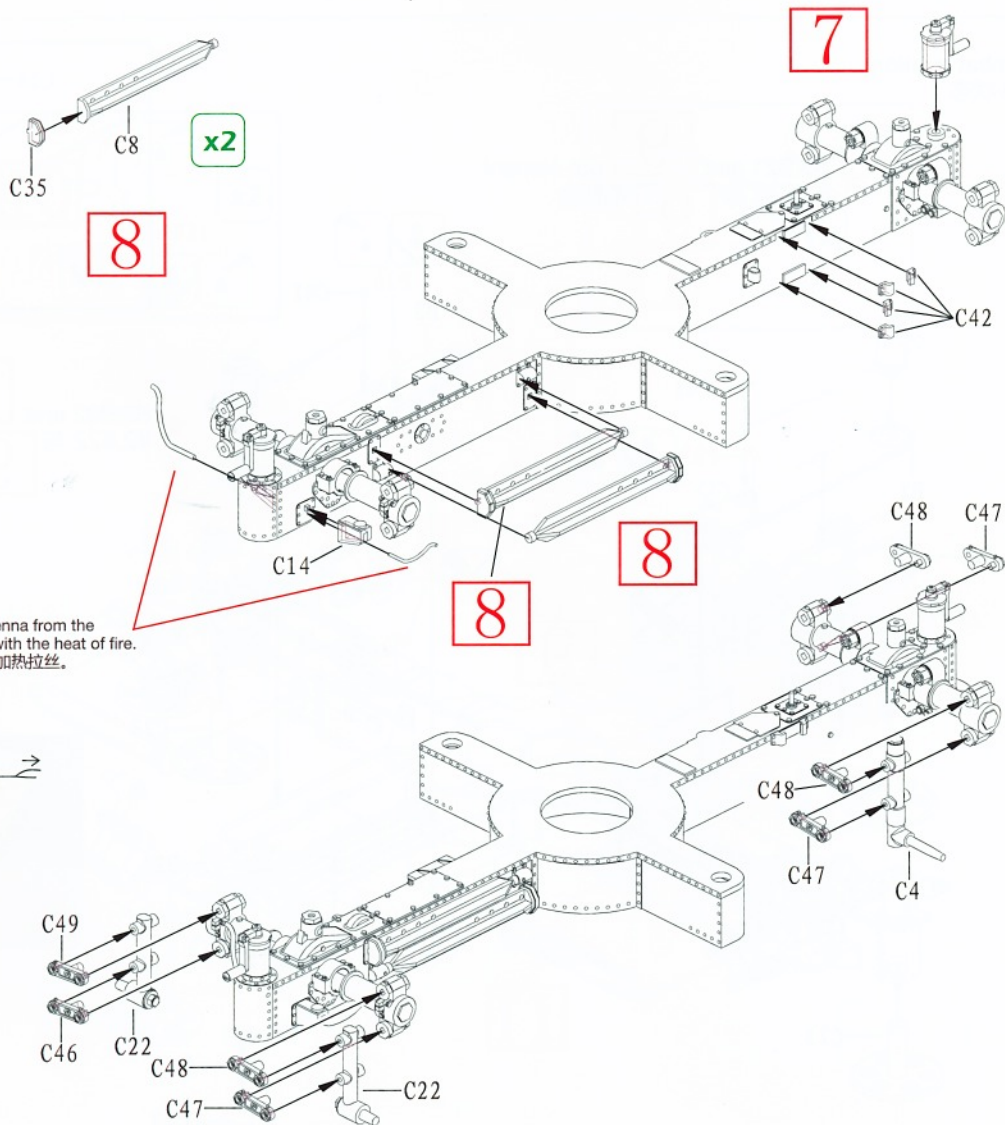
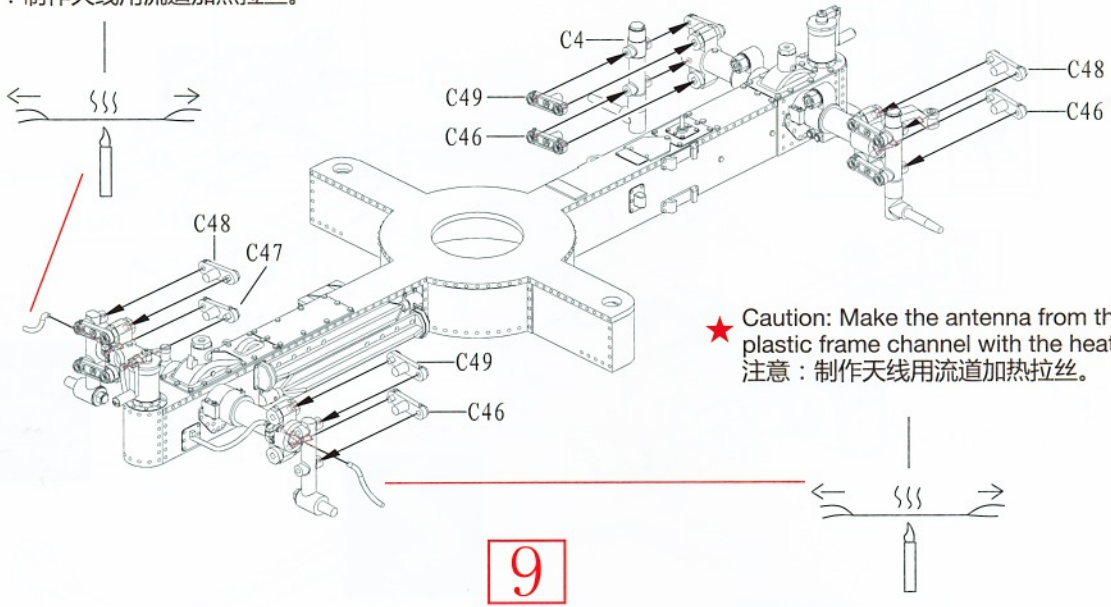


ILLUSTRATION 图示说明:

20

★ Caution: Make the antenna from the plastic frame channel with the heat of fire.
注意：制作天线用流道加热拉丝。

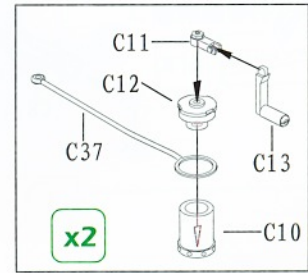


★ Caution: Make the antenna from the plastic frame channel with the heat of fire.
注意：制作天线用流道加热拉丝。

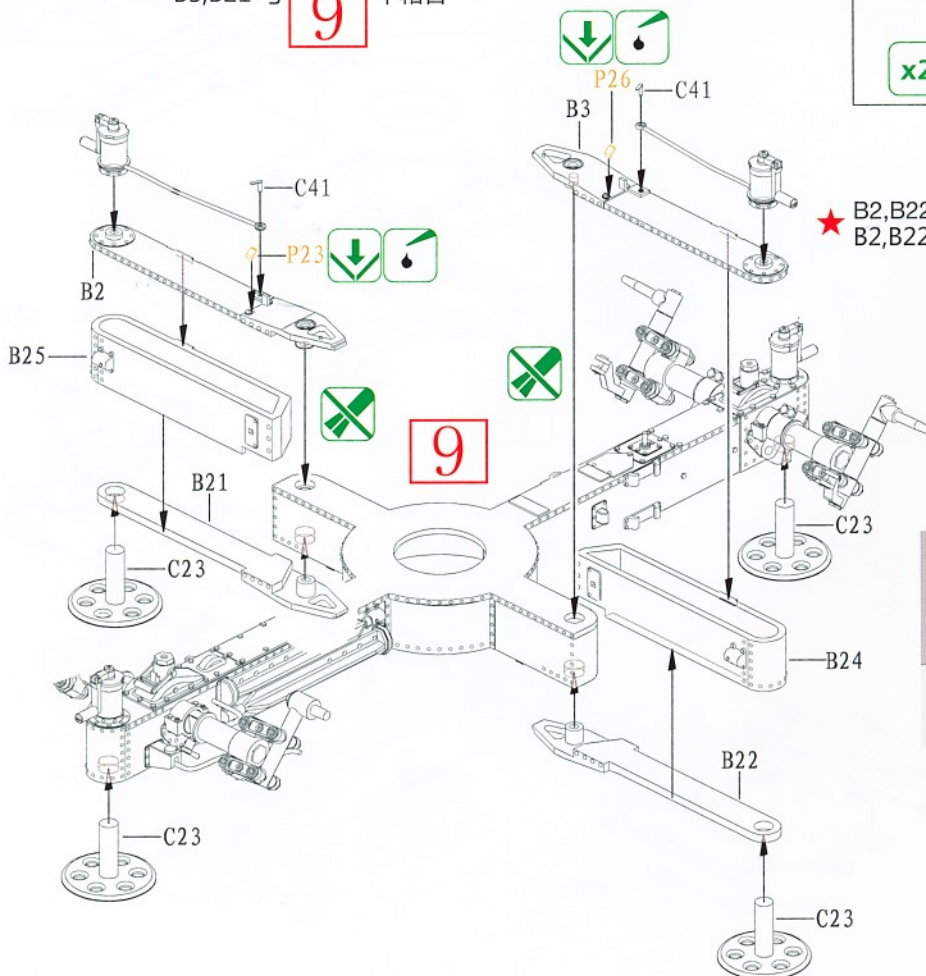
21

Combat position
战斗状态

★ B3, B21 and **9** not cement
B3, B21 与 **9** 不粘合

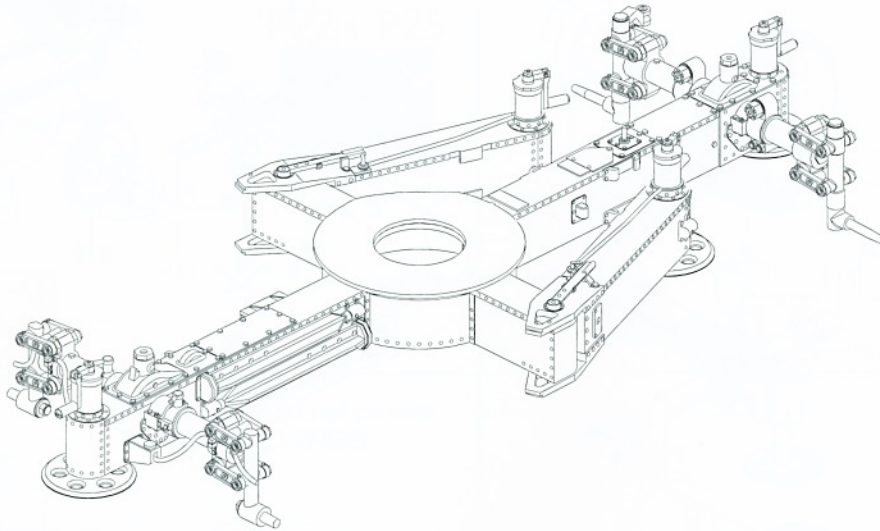


★ B2, B22 and **9** not cement
B2, B22 与 **9** 不粘合

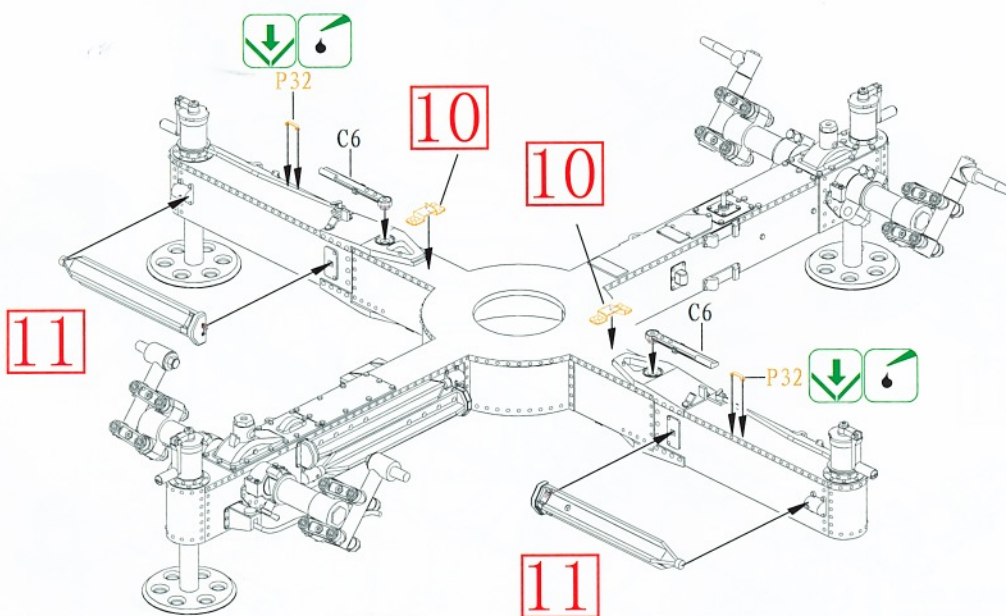
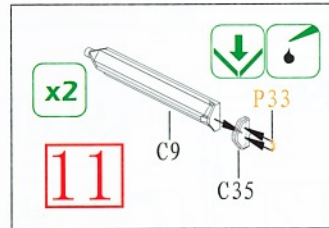
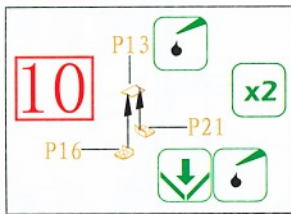


22

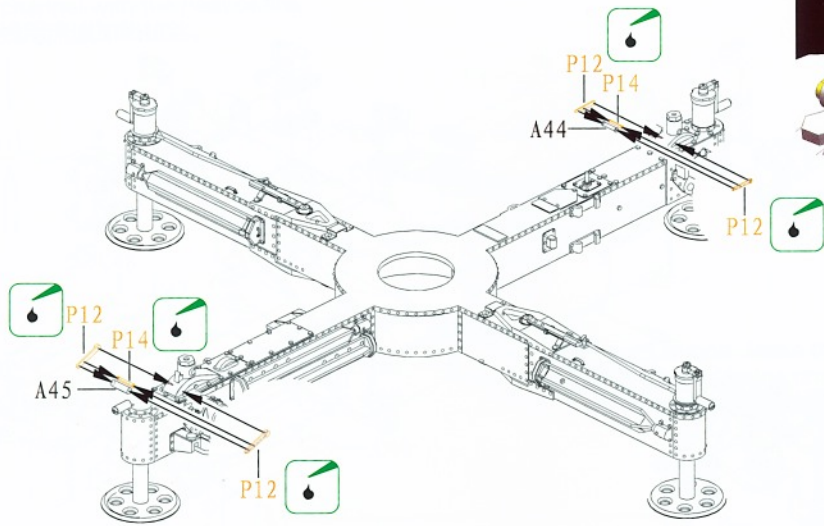
Transport position
运输状态



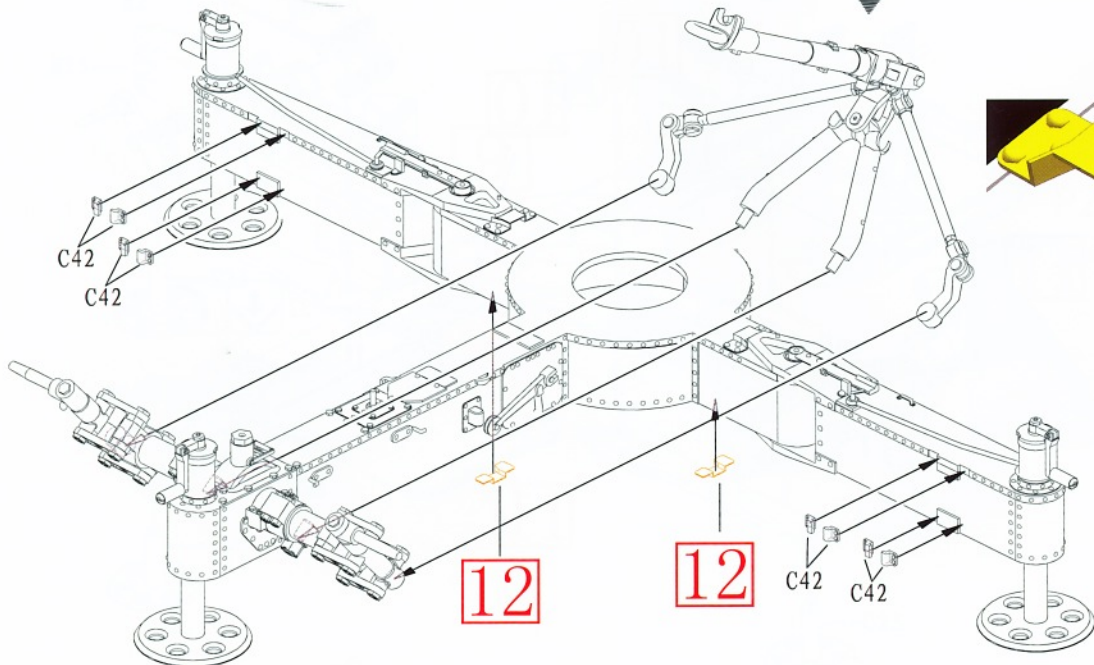
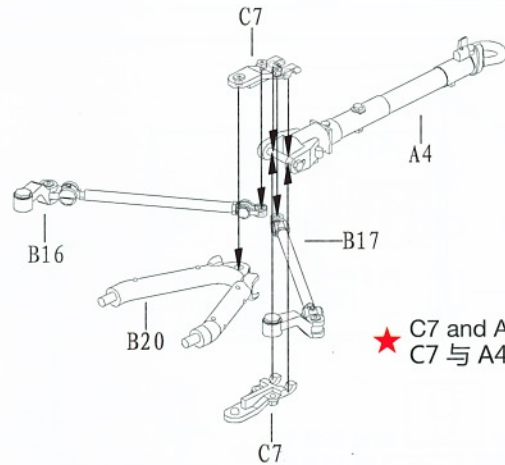
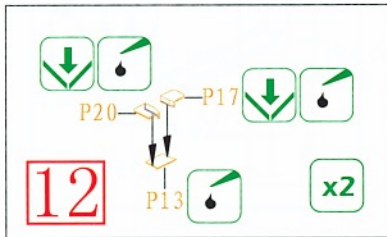
23



24

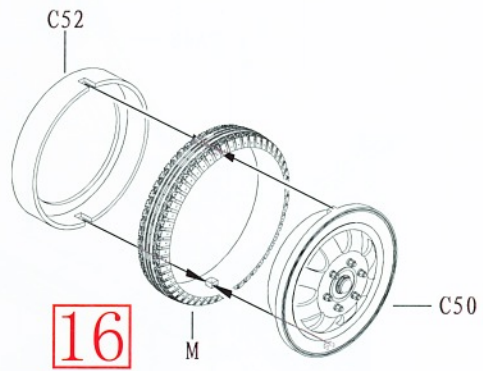
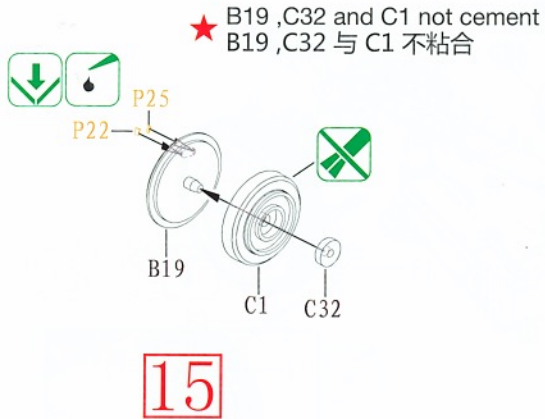
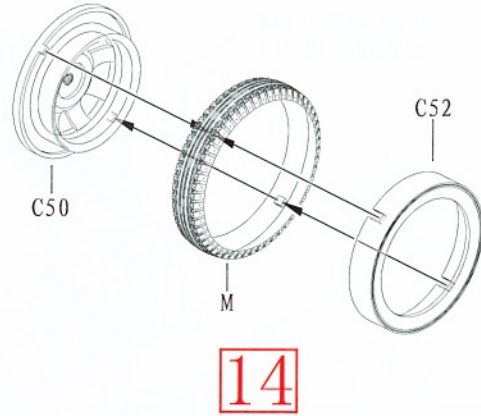
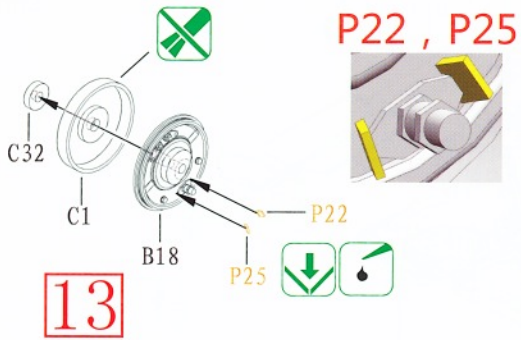


25

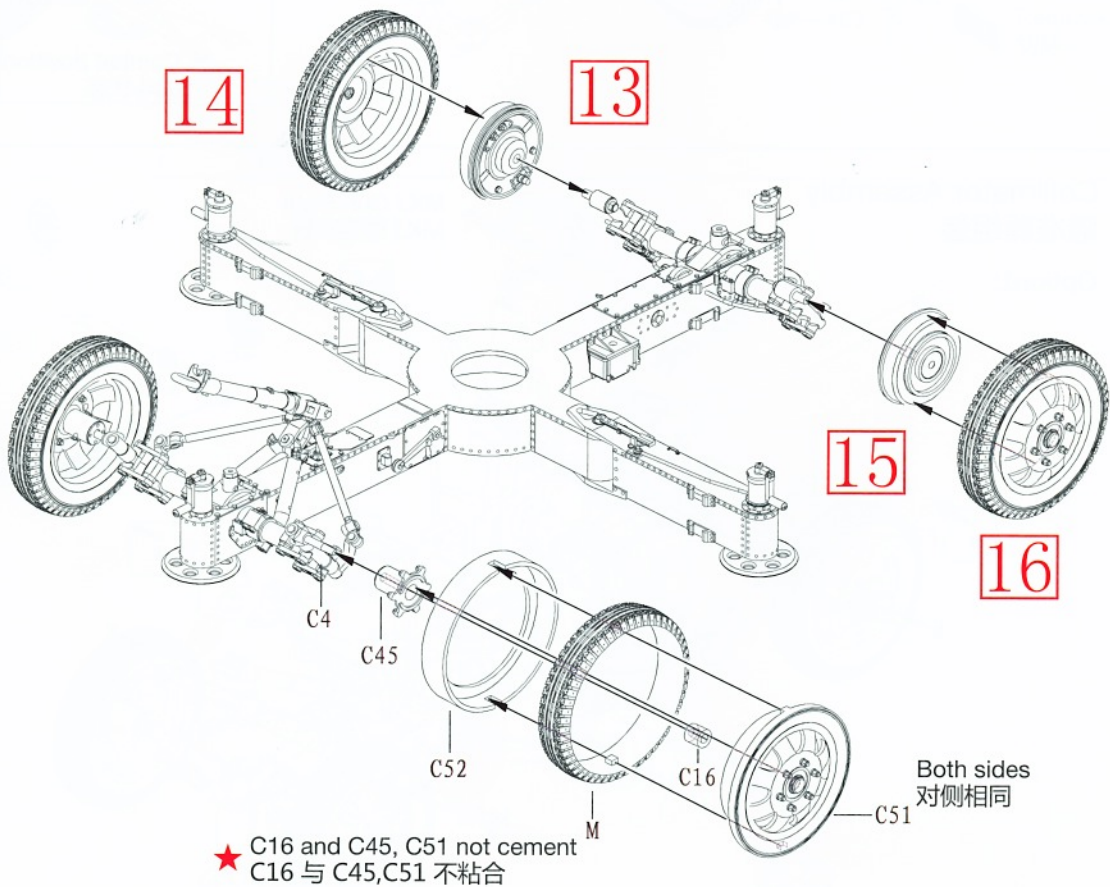


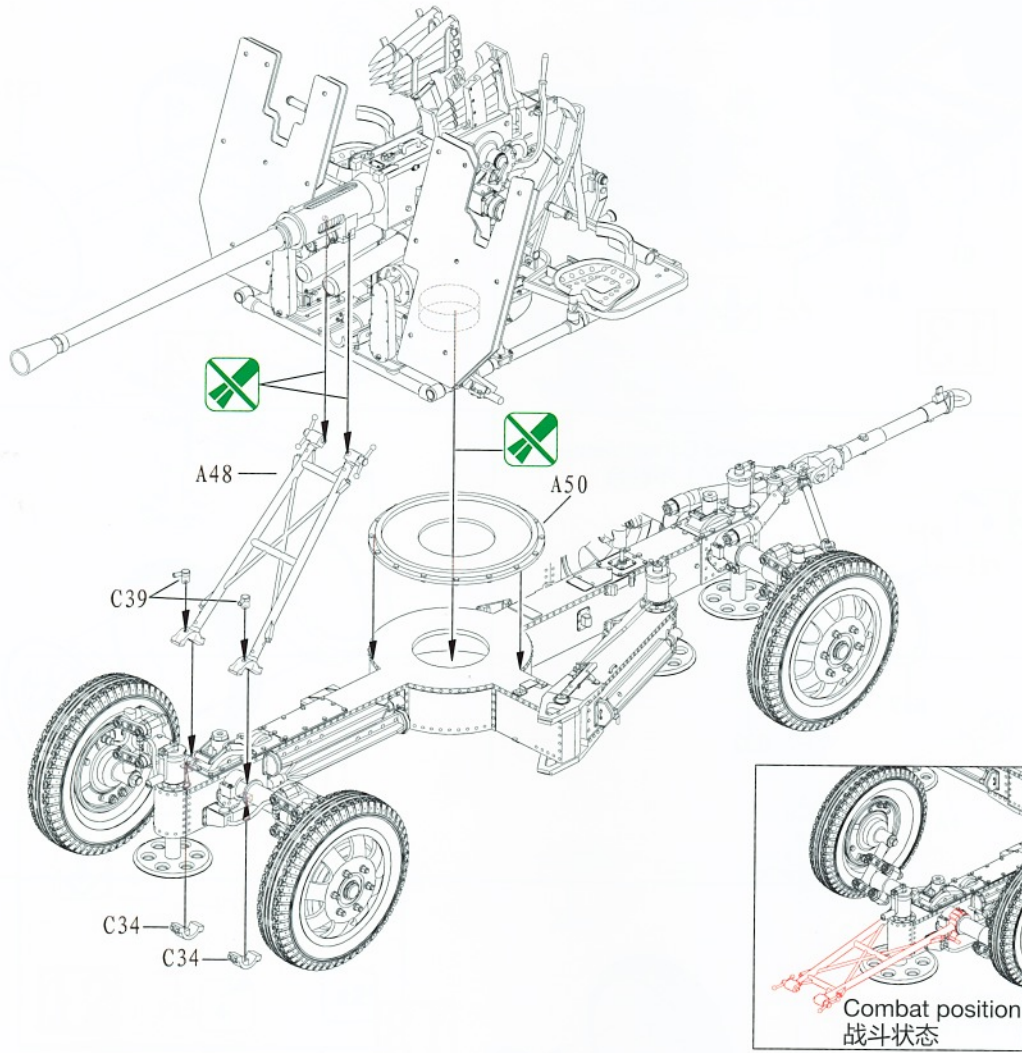
26

★ B18 ,C32 and C1 not cement
B18 ,C32 与 C1 不粘合



27

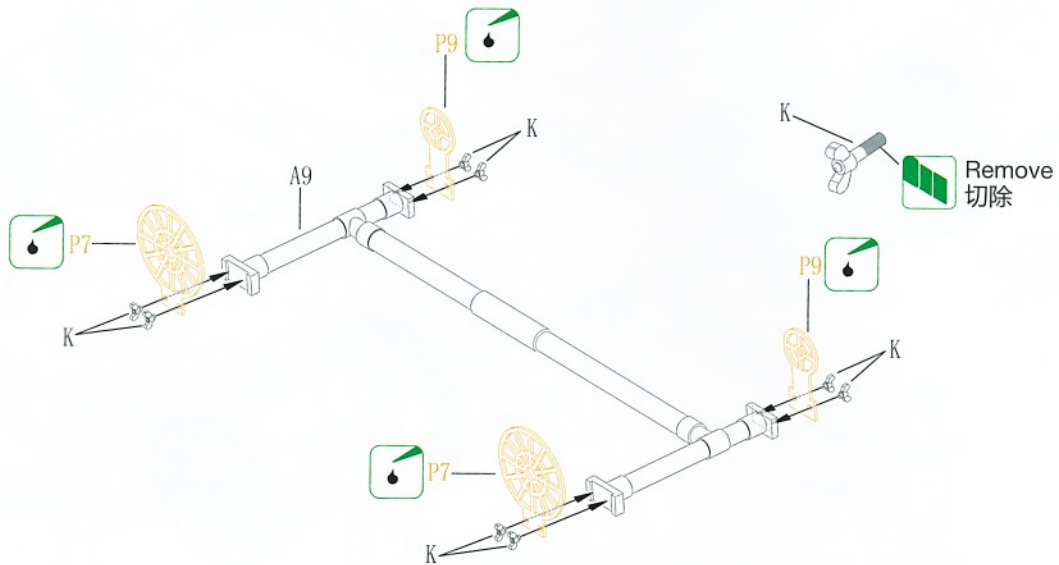




Collimator Assembly
瞄准器组装

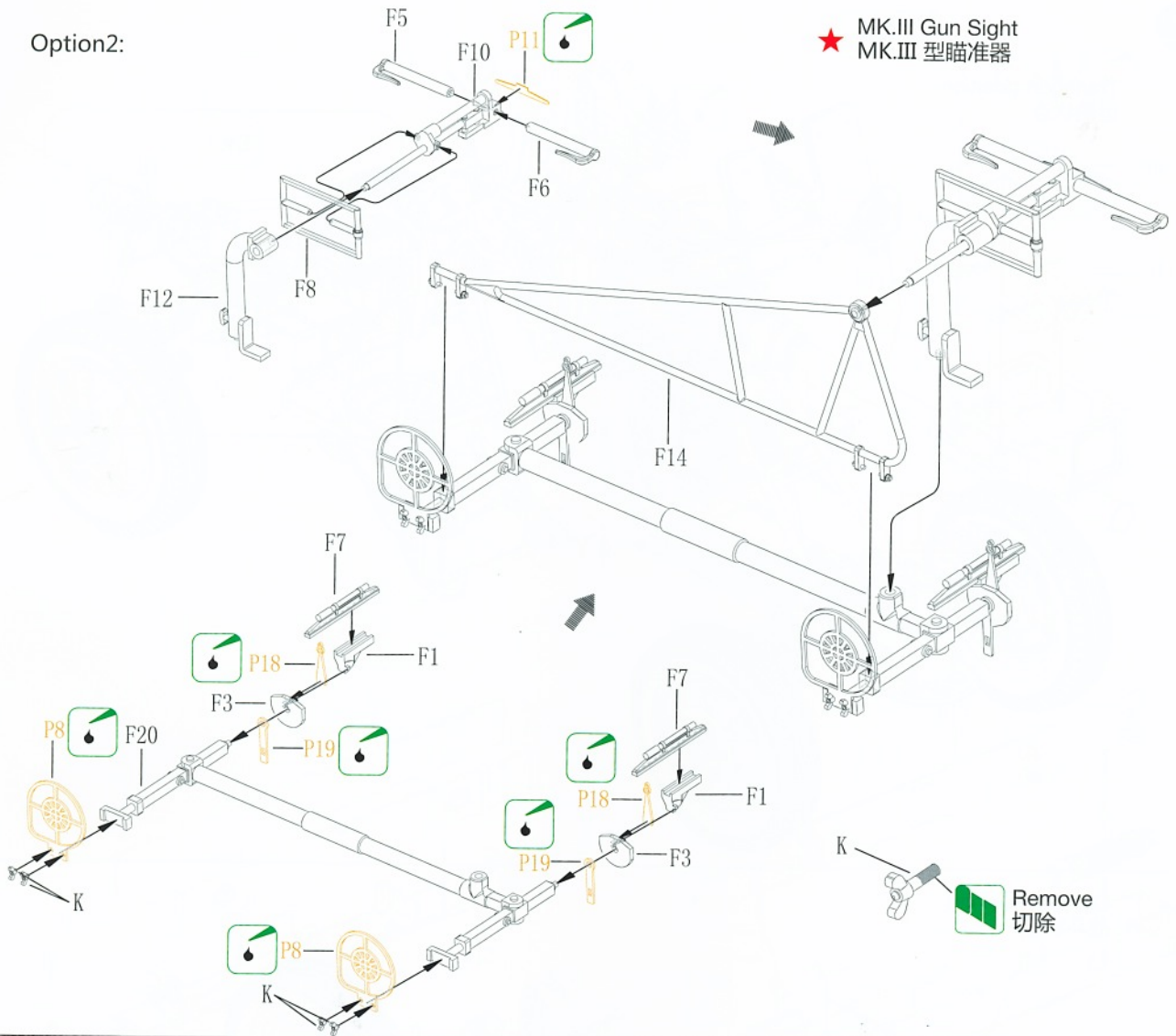
★ MK.I Gun Sight
MK.I 型瞄准器

Option1:

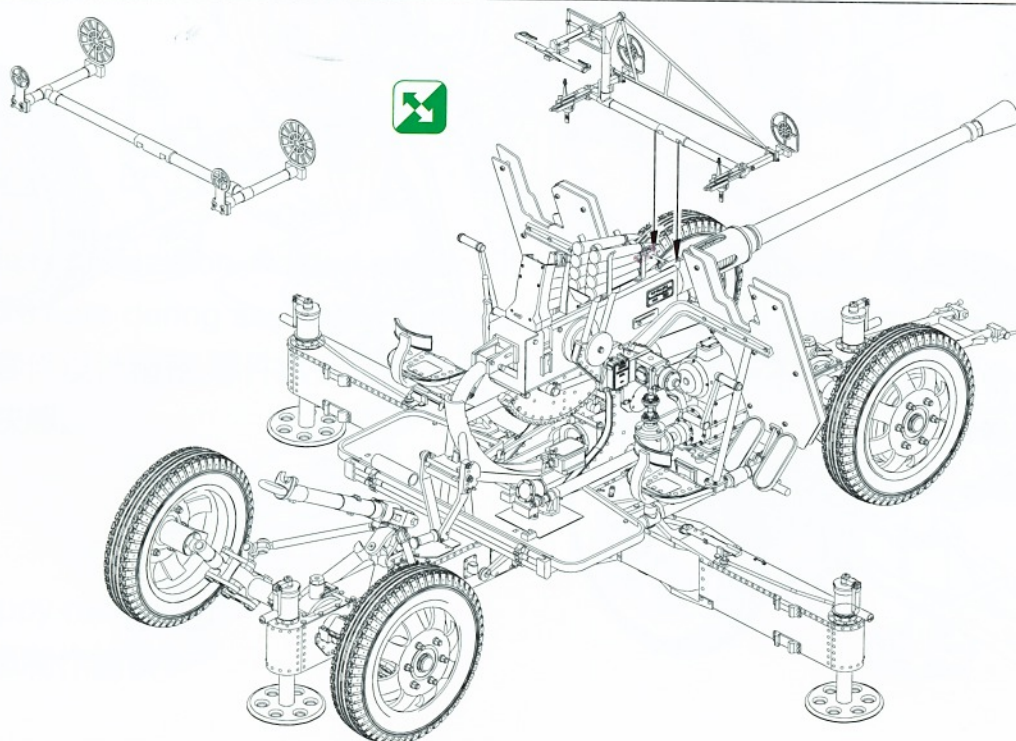


30

Option2:

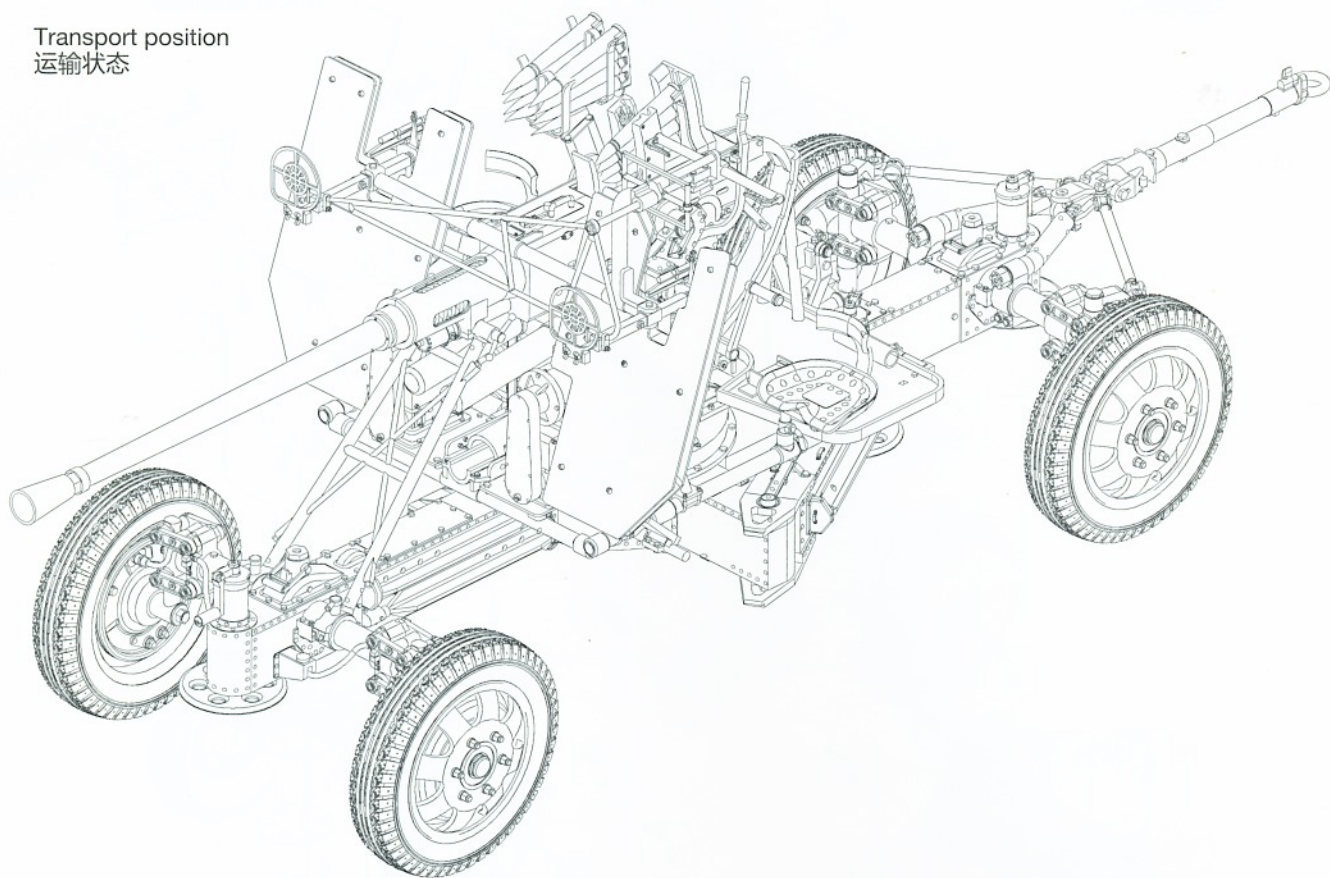


31

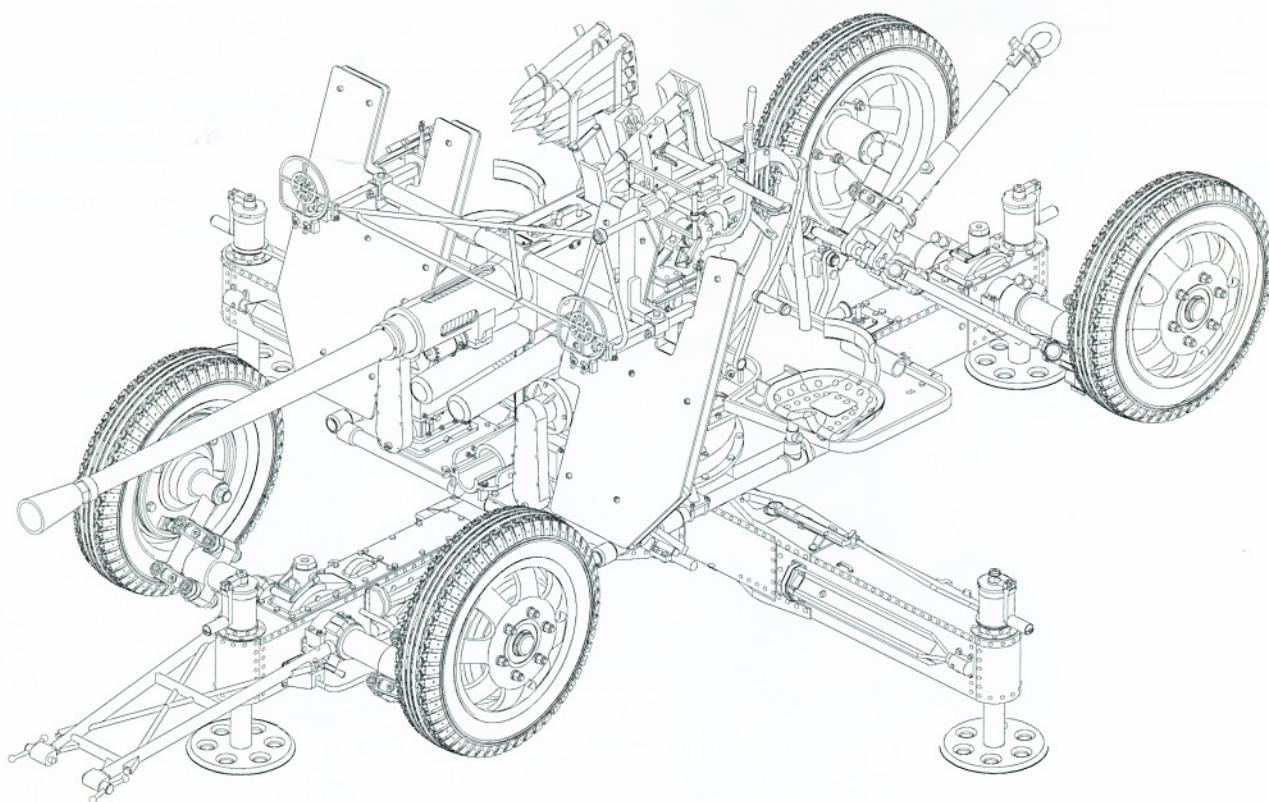


32

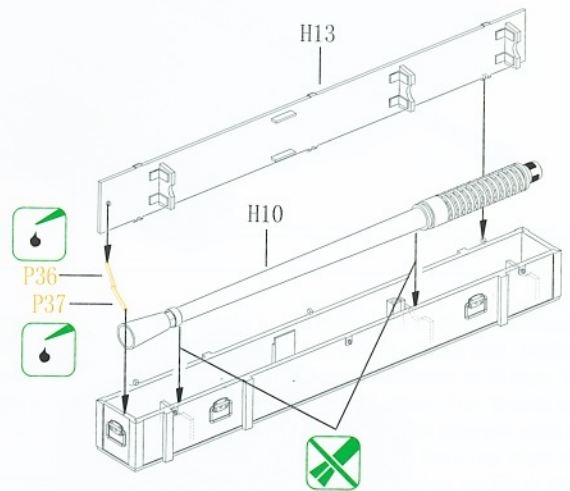
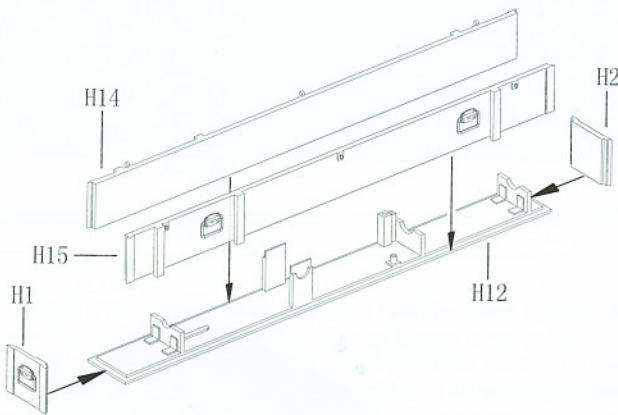
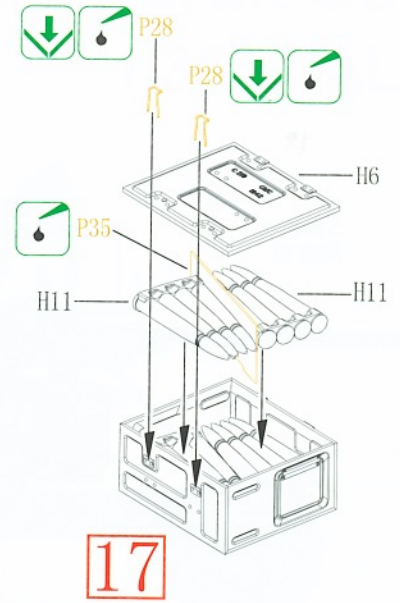
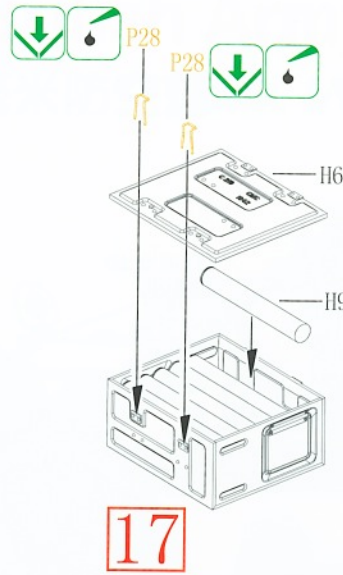
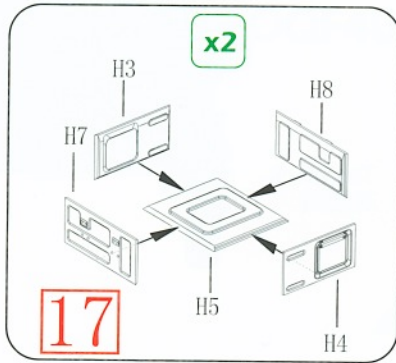
Transport position
运输状态



Combat position
战斗状态



33



★ This is a precision molded plastic kit with exceptionally fine detail. It will require a little more care during assembly, but you feel the end result is well worth the effort.
 本套件设计精密,零件繁多可能让你在制作过程中有所不便,但完成后会让你产生无穷之成功快感。

Happy modelling!
 祝愿制作愉快!

DECAL & COLOUR GUIDE 水贴及涂色指示:

