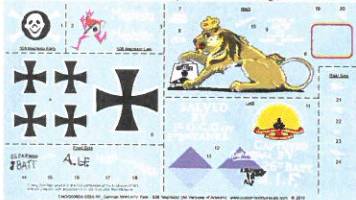


#855-R1: A7V '506' Mephisto - Early, Late and Post-Retrieval by Aussies



Place of Origin:	German Empire
Wars:	World War I
Specifications:	
Weight:	33 t
Length:	7.34 m (24 ft 1 in)
Width:	3.1 m (10 ft)
Height:	3.3 m (10 ft 10 in)
Crew:	18

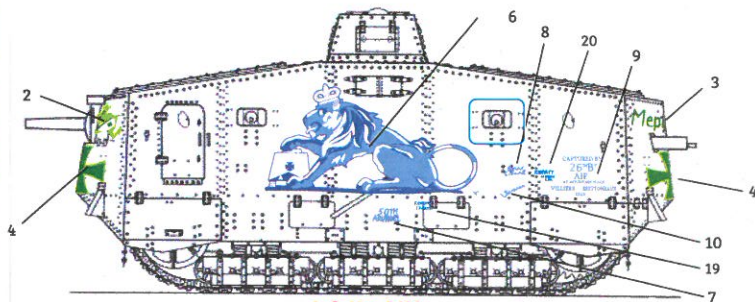
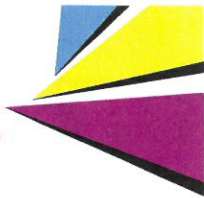
Germany produced a total of 20 of A7V Tanks (see also the "Überlandwagen", which was built on the A7V chassis) Only '506' Mephisto survived the post-WWI era (although there today are some other full-size recreations).

The A7V was constructed by two different firms in two different production lots that somehow incorporated changes that meant nearly every A7V varied in some regard. Based on manufacturer, there were two major hull types, with #502 - #507 built using single plate side ("Röchling" armour) and Buck mounted Gun. Later units ("Krupp") were built with multi-plate sides and the so-called 'Socle' gun.

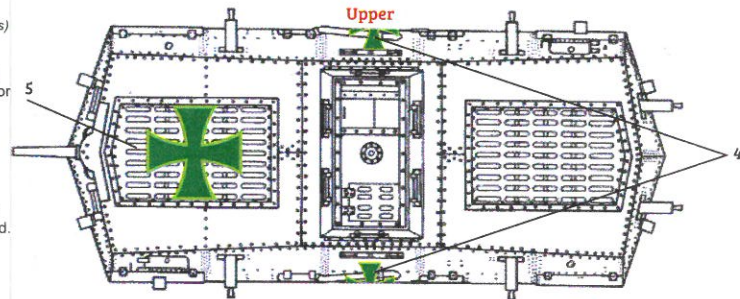
Unfortunately, whilst it is fairly easy to convert single-plate to multi-plate, and Buck to Socle, many kit manufacturers have instead released models based on the later major variation (eg 'Meng Models').

This decal set allows you to model Mephisto at any of the 4 stages in its life: early war; late war or as now preserved (currently at the Australian War Memorial, Canberra); and post-capture/retrieval on the battlefield.

The battlefield variation of the Australia Army 'Rising Sun' logo is used with the kind permission of the Australian Defence Forces. Our original artwork was updated and improved with the kind assistance the Australia War Memorial, Canberra. A7V drawings used in these instructions are based upon 1/35-scale drawings © Jochen Vollert from the book "Tankograd - World War One - No. 1001: Sturmpanzer A7V: First of the Panzers" © 2010 and are used with permission in this instruction sheet.



Left-Hand Side



Red = Early War Green = Updated Late War / As Restored Blue = Post-retrieval Graffiti

Custom Hobby Decals media type "M-15W"

The normal process for using these decals, printed on our Type "M-15W" decal media, is:

- * place required section of decal media in water for a slow count of 5;
- * remove decal media from water and shake to remove any excess;
- * use a pair of fine-nose tweezers, pick-up the edge of a decal film (where we have pre-cut the decal film) to gently lift the decal from the backing media.
- (our "M-15W" decals do *not* float or slide off ... unless you leave them in water for a long time);
- * with a little water on the receiving surface, position the decals as required.
- Add more water if further movement is required;
- * once positioned, use the edge / corner of a tissue to wick away any excess water;
- * apply decal setting solution and leave for 1 - 5 minutes;
- We often recommend 'Mr Mark Softer' or Tamiya's 'Mark Fix' decal setting solutions. Microscale's 'Micro Sol' is also very good, but may be more expensive depending upon which country you are in. We have also found in testing that some decal setting solutions are quite ineffective with our decal media;
- * allow the decal setting solution some time to react with the decal film;
- * once a decal has had time to react with the decal setting solution, do -not- attempt to move or re-position it!
- * again use the edge / corner of a tissue to wick away any excess solution;
- * use a balled-up tissue to gently but firmly press the decal onto the surface to both remove air bubbles and to promote conformance to a non-flat surface;
- * allow to dry, then apply a suitable clear-coat. Our film and inks work with most non-solvent-based clear coat-products.

You should find our decals offer considerable resistance to damage, but provide good conformability to surface detail when treated with decal setting solution. Please do not hesitate to contact us immediately should you have any questions regarding the above, or any other matter concerning our decals or services.

Custom Hobby Decals

P: 04 3859 7703

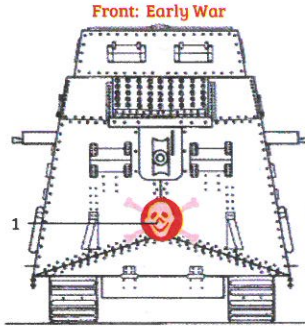
+61 4 3859 7703

W: www.customhobbydecals.com

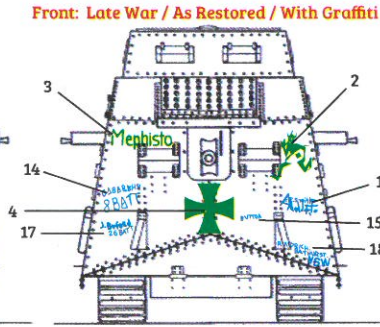
F: 02 4626 1379

+61 2 4626 1379

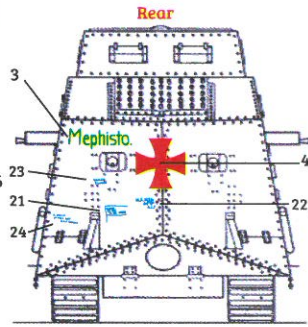
E: geoff@customhobbydecals.com



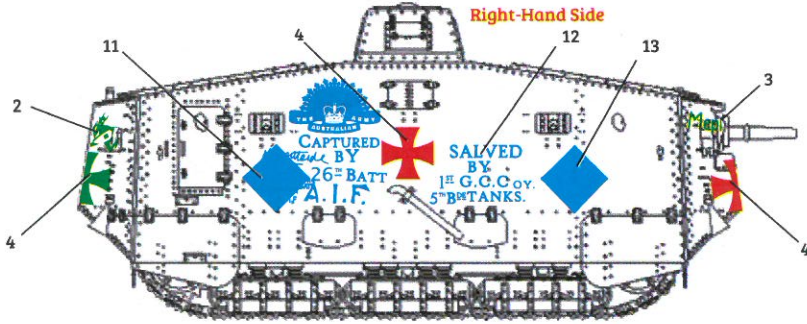
Front: Early War



Front: Late War / As Restored / With Graffiti



Rear



Right-Hand Side