

SCALE  
1/48

USN F-4J  
"VF-84 Jolly Rogers"



**ACADEMY**  
HOBBY MODEL KITS

12305

Warning in Assembly of Model Kits  
조립전의 주의사항

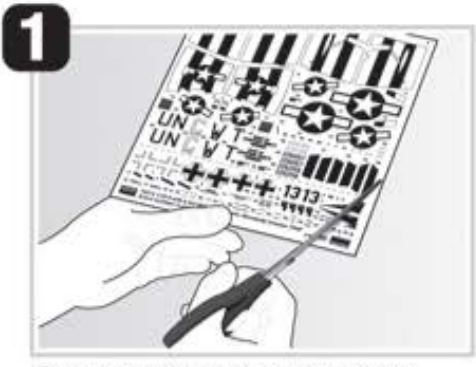
Take care not to injure yourself while using the modeling tools to cut or trim parts.  
공구를 이용하여 부품을 다듬고 자를 경우, 손을 다치지 않도록 주의를 기울여 주십시오.



MAIN COLOR	1 WHITE FS17875 항공 백색		10 GLOSS BLACK FS17038 유광 검은색				14 LIGHT GULL GRAY FS16440 라이트 걸 그레이					
	Humbrol		GSI Creos		Lifecolor	TESTORS / MODELMASTER		Revell		Vallejo		
	ENAMEL	ACRYL	AQUEOUS HOBBYCOLOR	Mr. COLOR		ENAMEL	ACRYL	ENAMEL	ACRYL	MODEL COLOR	MODEL AIR	
1 WHITE FS 17875	22	22	H316	316	LC51	1745	4696	32104	36104	842		항공 백색
2 FLAT BLACK FS 37038	33	33	H12	33	LC02	1749	4768	32108	36108	950	57	무광 검은색
3 DARK GULL GRAY FS 36231	140		H317	317	UA033	1740	4755	32179	36179	991		다크 걸 그레이
4 YELLOW FS 13538	188		H329	329	LC53	1707	4683	32310	36310	953	2	노란색
5 SILVER	11	11	H8	8	LC74	2914	4678	32190	36190	997	63	은색
6 BURNT IRON			H76	61								번트 아이언
7 CLEAR RED	1321		H90	47			4630			934		투명 빨간색
8 CLEAR BLUE	1320		H93	50			4658			938		투명 파란색
9 RED FS 11136	19	19	H3	3	LC56	1503	2741	32131	36131	957	84	유광 빨간색
10 GLOSS BLACK FS 17038	21	21	H2	2	LC72	1747	4695	32107	36107	861		유광 검은색
11 KHAKI GREEN			H80	54								카키 그린
12 OLIVE DRAB FS 34087	155		H52	12	UA003	1711	4728			887	43	올리브 드랍
13 FLESH	61	61	H44	51	LC21	1516	1153	32135	36135	955	76	피부색
14 LIGHT GULL GRAY FS 16440	183		H315	315		1729	4692					라이트 걸 그레이
15 STEEL	53	53	H18	28	LC76	1795	4681	32191	36191	863	72	스틸
16 RADOME TAN FS 33613	148		H318	318		1709	4722			917	74	레이돔 탄

Guide for Beginners  
입문자를 위한 가이드

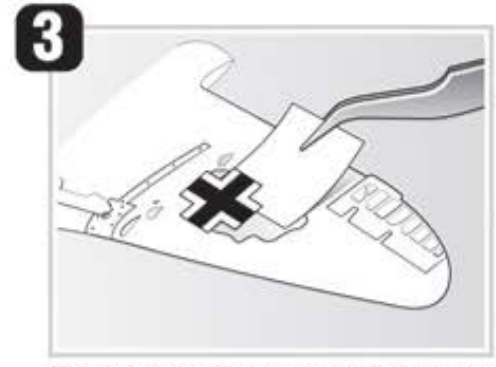
Water - Slide Decals / 습식 전사지 (데칼) 부착 방법



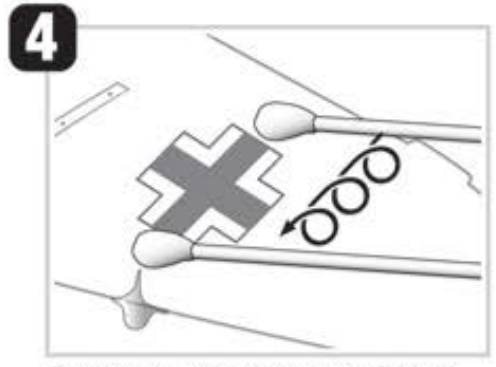
Cut desired part of decal sheet with scissors.  
사용할 전사지(데칼)이 있는 부분을 가위로 오려냅니다.



Water (15 ~ 22°C)  
Float the cut decal on water for 10 ~ 30 seconds.  
잘라낸 전사지를 물에 띄워 약 10 ~ 30초 동안 불립니다.



Take out the decal sheet from water and paste it to the designated area with precision tweezers.  
물에서 꺼낸 전사지를 부착 부위에 정밀 핀셋을 사용해 부착합니다.



Remove water or air on the surface of decal sheet with soft tower, tissue or cotton swab.  
남은 물기 및 기포는 면봉, 티슈, 부드러운 수건을 이용하여 제거합니다.





# CAUTION!

## -주의-

<READ THIS BEFORE YOU BEGIN>  
 <ALLGEMEINE HINWEISE>  
 <LISEZ CE QUI SUIT AVANT DE COMMENCER LE MONTAGE>  
 <組み立てる前に>  
 <조립하기 전에 먼저 읽어 주십시오>

### <READ THIS BEFORE YOU BEGIN>

- Study the instructions before assembling. - Check the fit of each piece before cementing into place.
- Do not use too much cement to join parts. - Never use cement or paint near open flame.
- Open a window or make area well ventilated when cement or paint is in use.
- Tear up and throw away the empty plastic bags to avoid danger of suffocation for little children.

### <ALLGEMEINE HINWEISE>

- Die Anordnung der Bauteile ist aus den Zeichnungen der Anleitung ersichtlich.
- Die Teile vor dem Verkleben ungeleimt zusammenhalten, um ihren paßsitz zu prüfen.
- Klebstoff nicht zu dick auftragen. - Klebstoff und Farben niemals in der Nähe einer Flamme verwenden.
- Während der Bemalung mit Spritzpistole oder Pinsel für frische Luftzufuhr, z.B. öffnen des Fensters, sorgen.
- Bausatz von kleinen Kindern fernhalten. Verhüten Sie, daß Kinder irgendwelche Bauteile in den Mund nehmen oder Plastiktüten über den Kopf ziehen.

### <LISEZ CE QUI SUIT AVANT DE COMMENCER LE MONTAGE>

- Etudier les schémas d'assemblage. - Contrôler que chaque pièce soit bien conforme avant de la coller à sa place.
- N'utilisez pas trop de colle pour réunir les pièces. - Ne farnais manipuler la colle ou peinture à proximité d'une flamme.
- Aérer soigneusement la pièce où vous peignez/ouvrez la fenêtre).
- Après avoir sorti les pièces du sac en plastique, déchirer le sac afin d'éviter que les enfants ne le mettent sur la tête et ne s'étouffent.

### <組み立てる前に>

- 組み立てる前に説明書をお読み下さい。 - 部品をランナーから切りはなす時は模型用ニッパーとカッターを使用します。
- 接着剤を少しなめに使うことがきれいに仕上げるコツです。 - 接着する前に部品を合わせて確かめます。
- 接着剤や塗料を使用する時はときどき窓を開けて換気に気をつけましょう。
- 組み立て後の部品やビニール袋は小さな子供の届かない安全な所に保管して下さい。

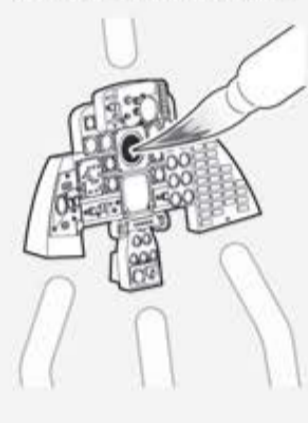
### ■조립하기 전에

- 부품을 조립하기 전에 설명서를 잘 읽어본 후 조립한다.
- 접착하기 전에 부품을 맞추어 확인한 후 조립한다.
- 부품을 자를 때에는 칼이나 니퍼로 깨끗이 잘라준다.
- 접착제를 사용할 곳과 사용하지 않는 곳에 주의하고 너무 많이 바르지 않도록 한다.
- 에나멜 페인트나 접착제를 사용할 때는 창문을 열어 환기를 시키고 화기를 멀리한다.
- 사용 후 남은 부품은 어린 아이들의 손에 닿지 않도록 잘 처리한다.

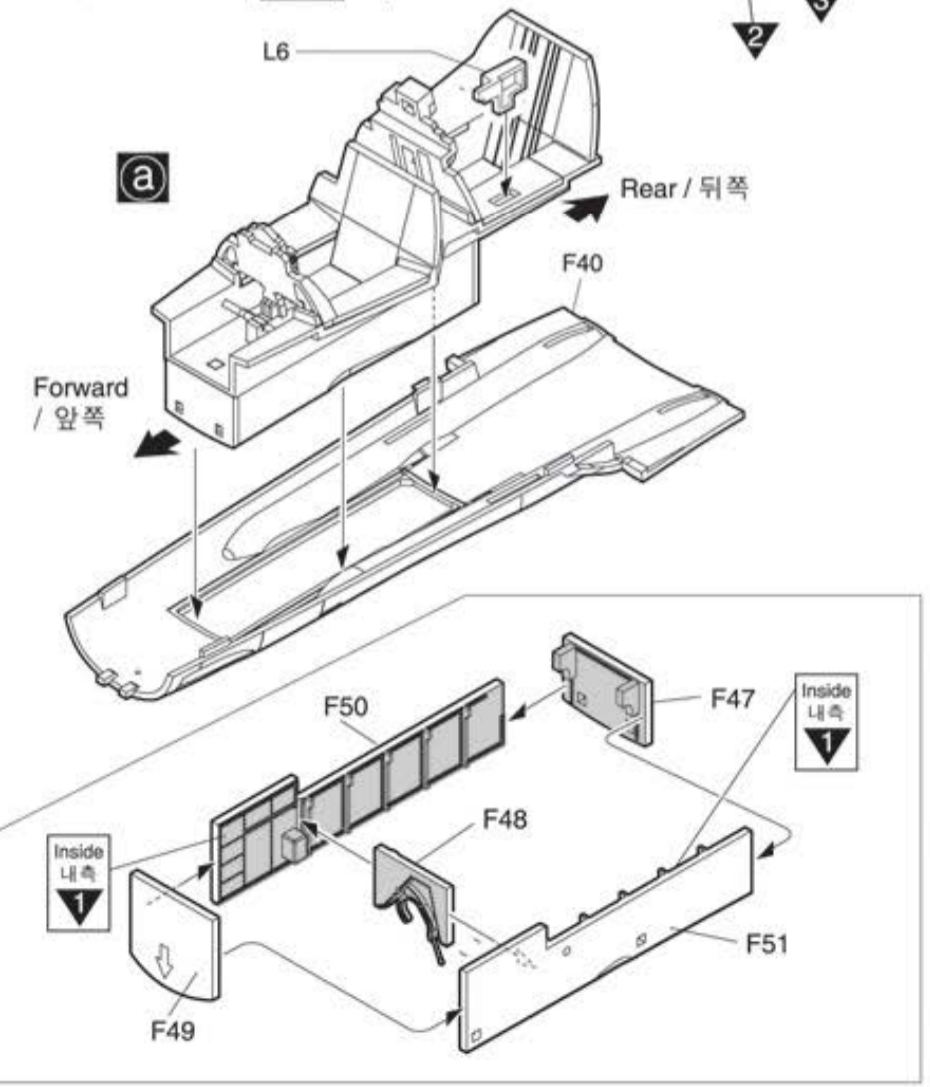
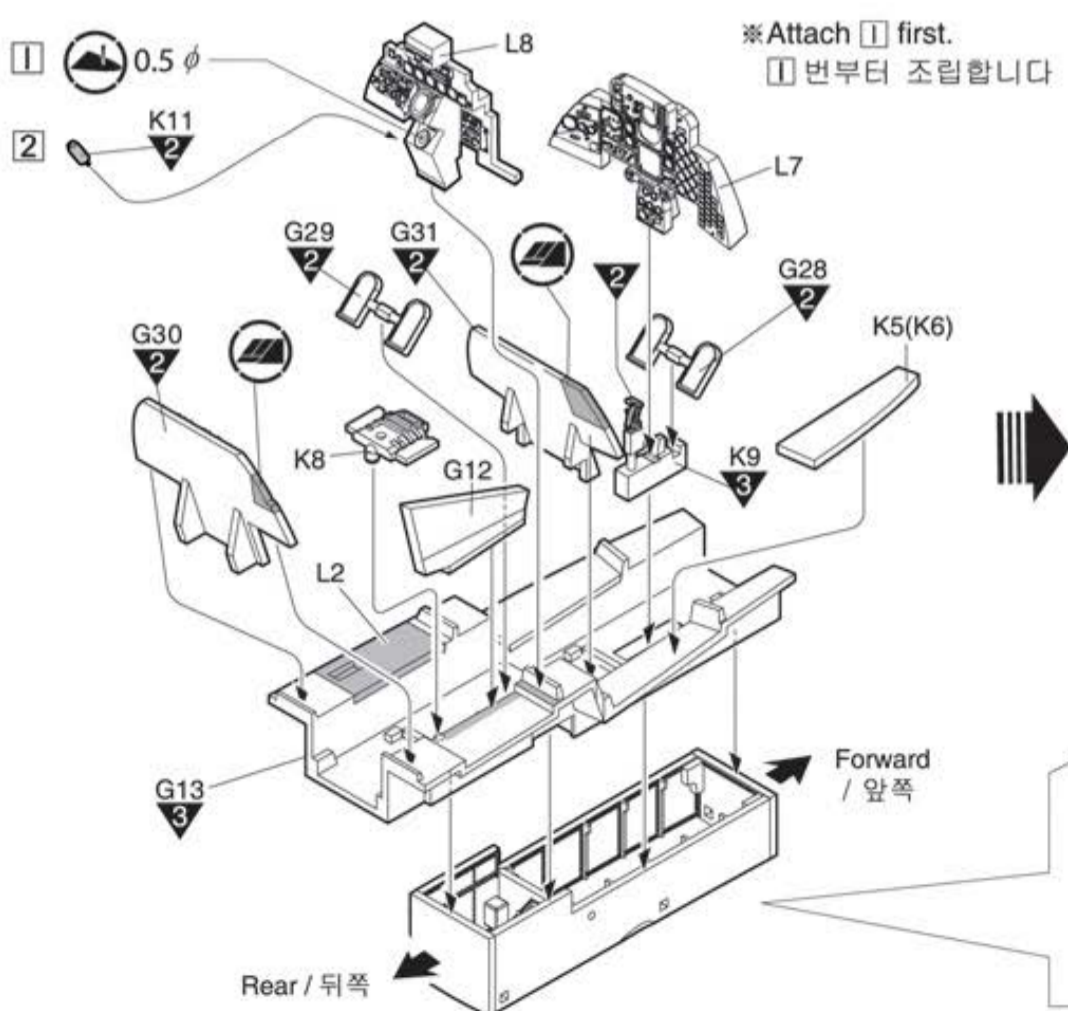
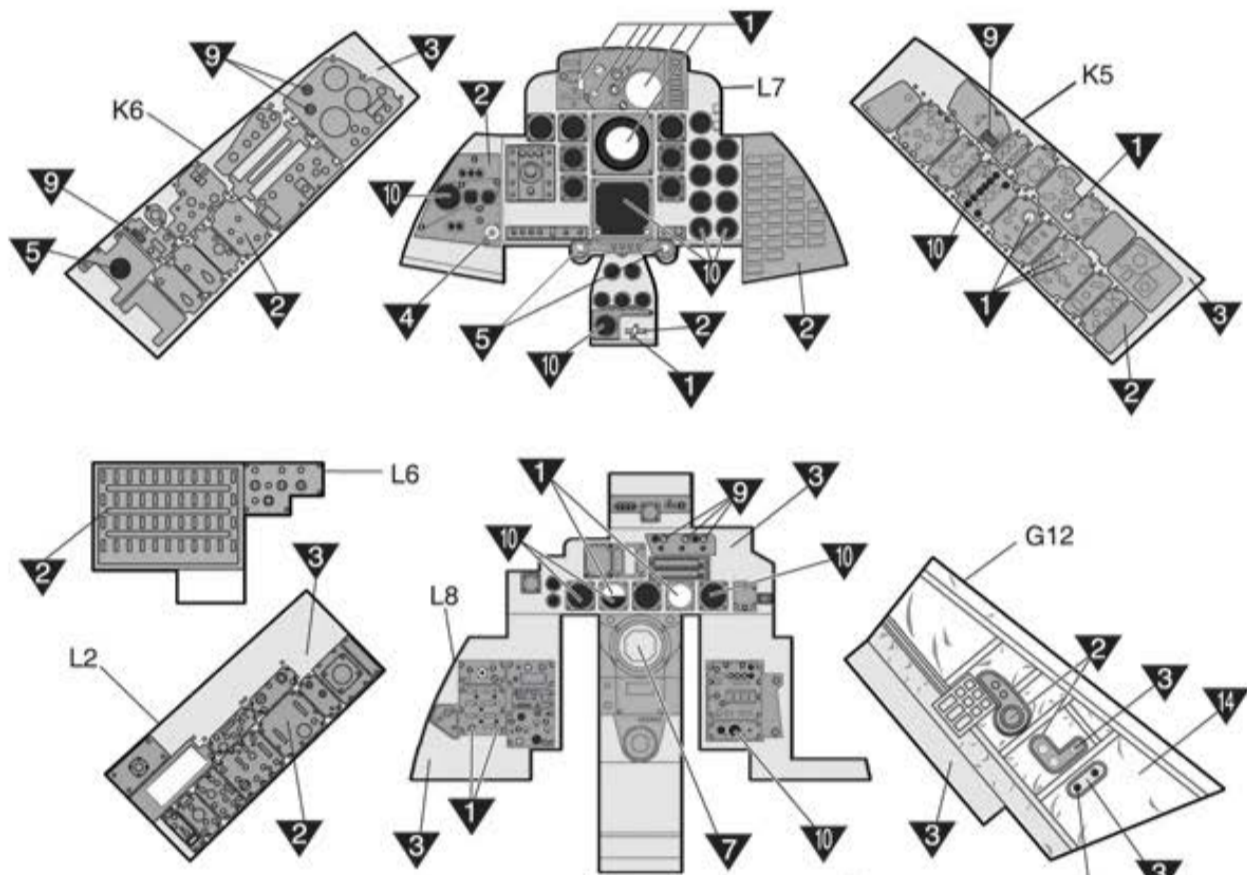
<b>점착한다.</b> Cement parts Coller Kleben	<b>점착하지 않는다.</b> Do not cement Ne pas coller Nicht kleben	<b>2</b> 수반을 조립한다. Repeat operation Répéter l'opération Vorgang wiederholen	<b>DECAL</b> 전사지를 붙인다. Decals Dècalcomanies Abziehbild	<b>2g</b> 무게추를 넣는다. Add weight Lester Gewicht	<b>구멍이나 홈을 메워준다.</b> Use filler Mastiquer Schleifen
<b>잘라낸다.</b> Cut away Couper Schneiden	<b>선택한다.</b> Optional parts Choix Auswahlmöglichkeit	<b>반대측도 조립한다.</b> Repeat for opposite side Répétition de la page Wiederholung für gegenüberliegende Seite	<b>구멍을 뚫어준다.</b> Make hole Faire un trou Öffnen	<b>주의한다.</b> Be careful Faire attention Hier Vorsicht	<b>1</b> 색칠 및 전사지 붙이기 번호 Painting scheme number Numeros de la liste de peintures Lackierschemanummer

# 1

## How to Painting of Instrument Panel / 계기판 색칠하는 방법

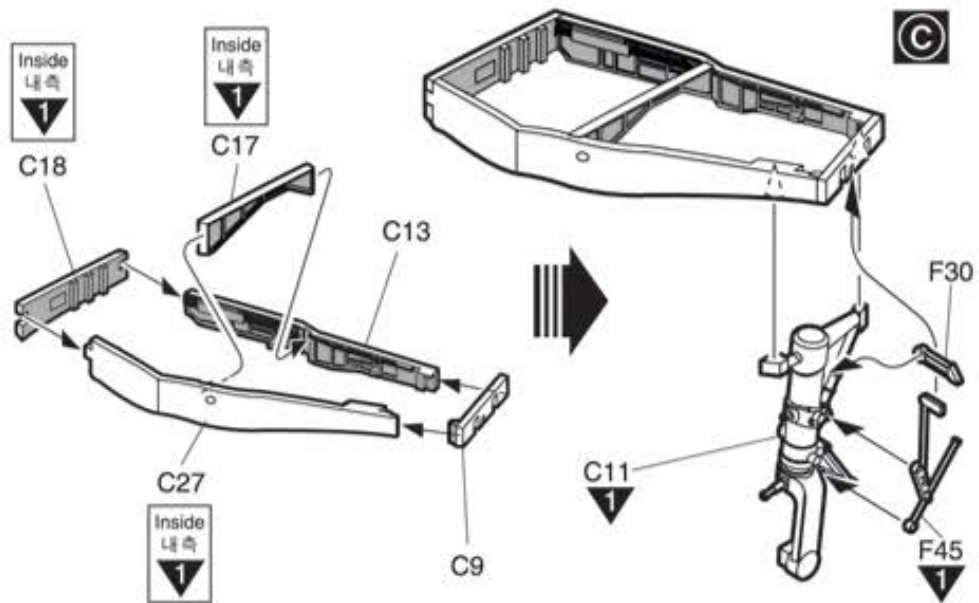
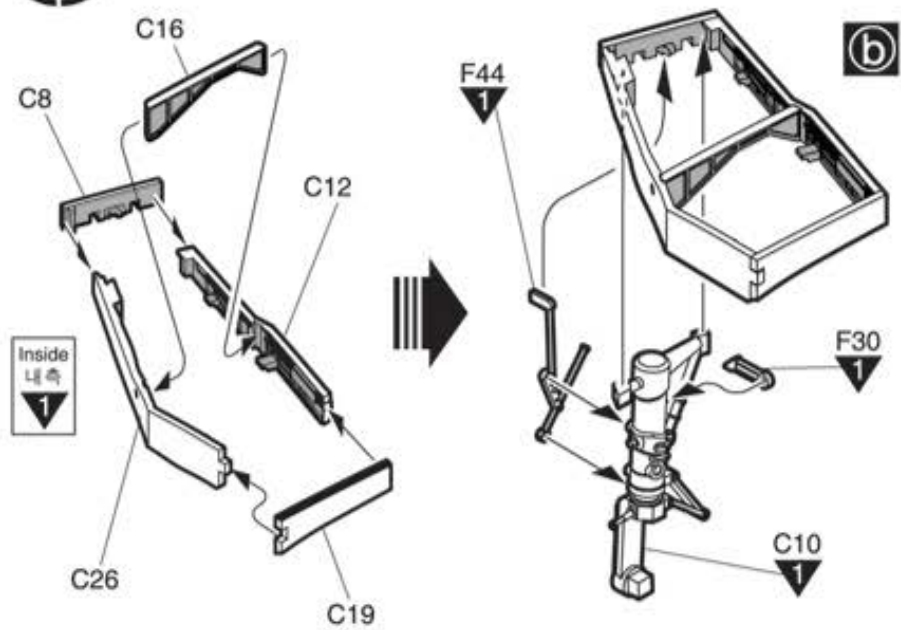


계기판처럼 작은 부품은 런너에서 떼어내기 전에 색칠하는 것이 보다 편리합니다.  
 Paint small parts like a instrument panel before them from the frame.  
 유리 질감을 밀색을 칠한 후 클리어 도료를 한방울 떨어 뜨려 표현할 수 있습니다.  
 To express texture of glass by dropping a drop of clear paint.

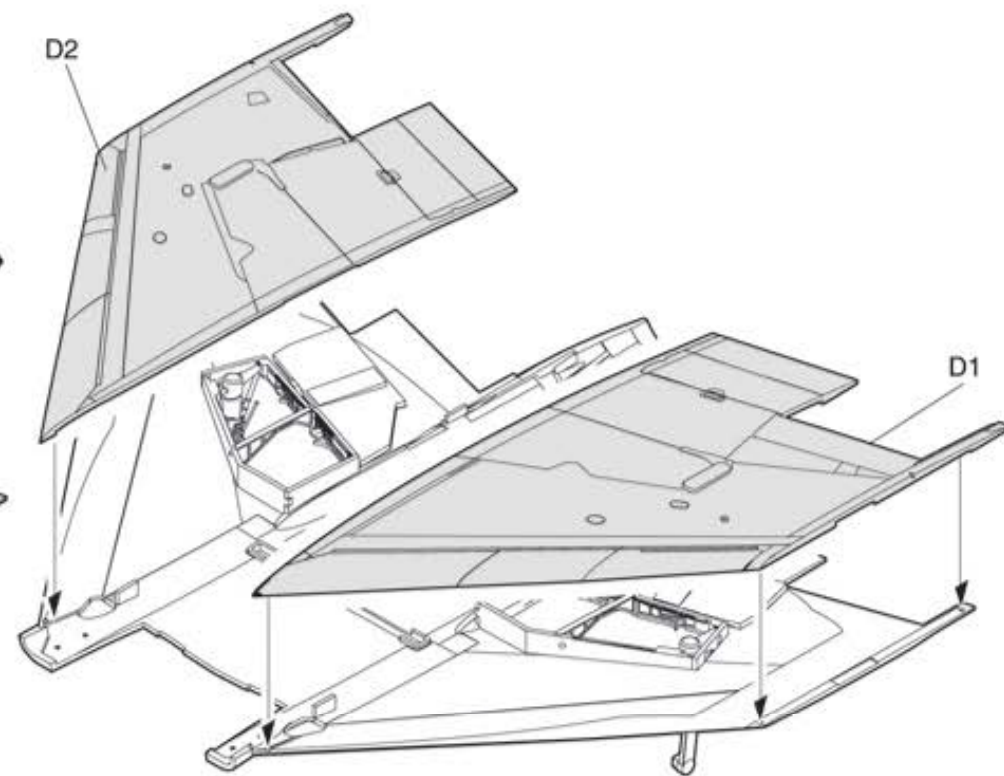
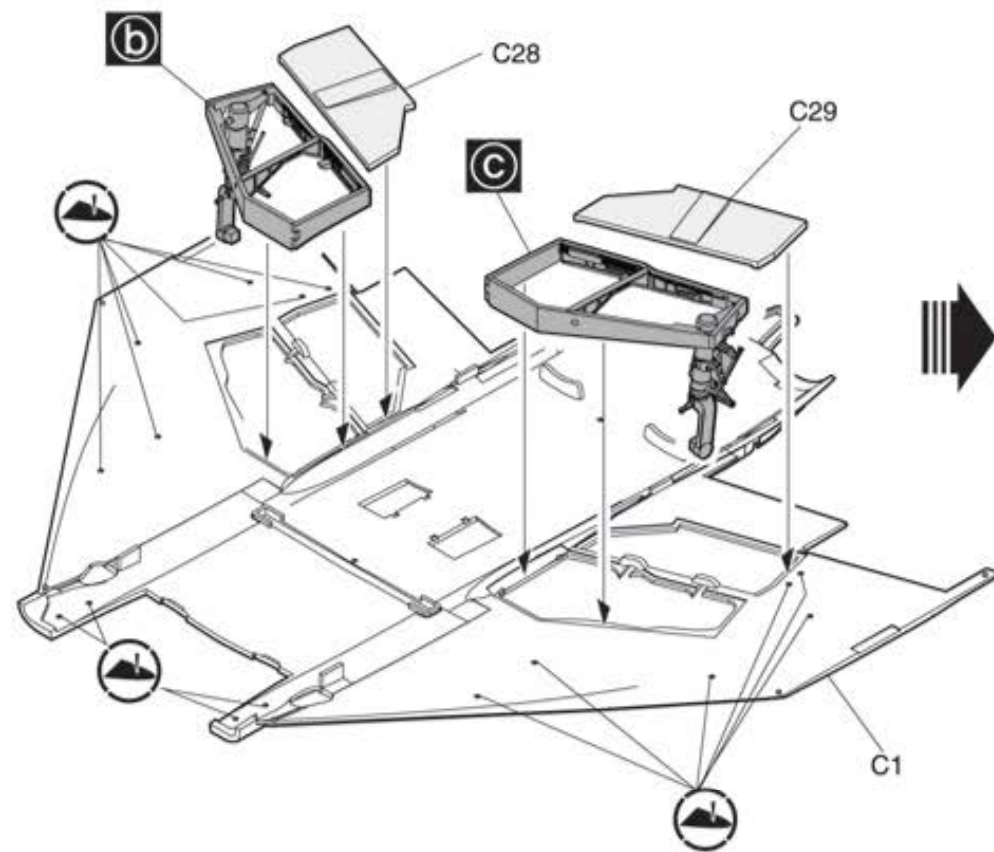
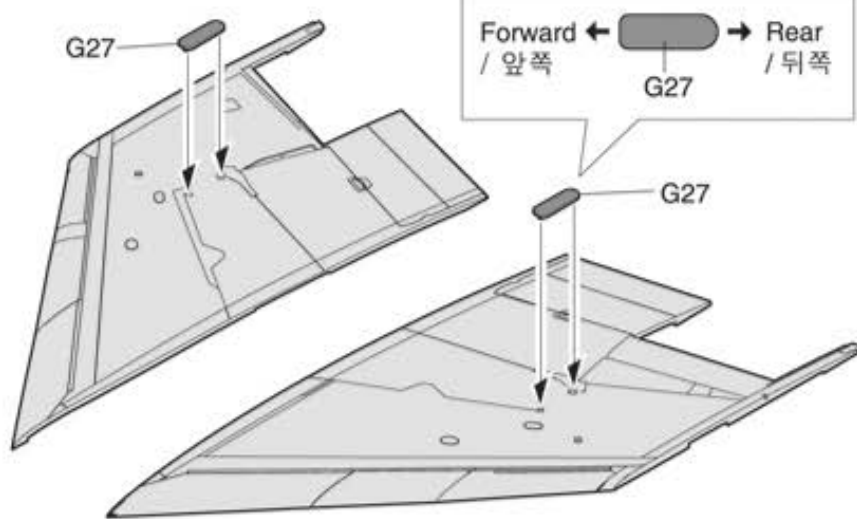
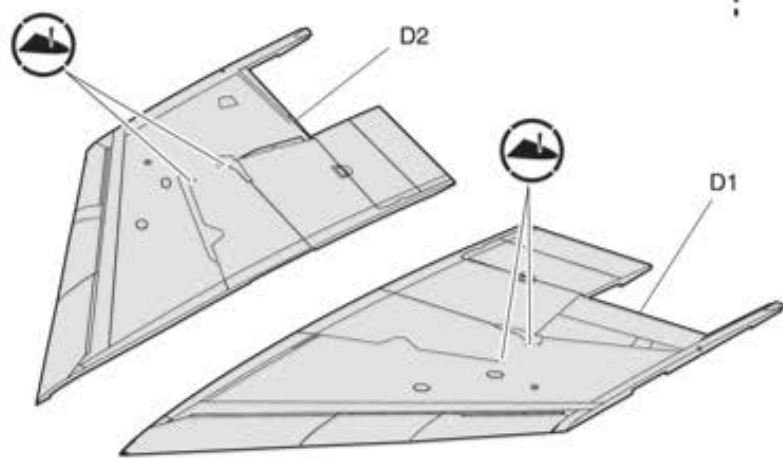




**2** 

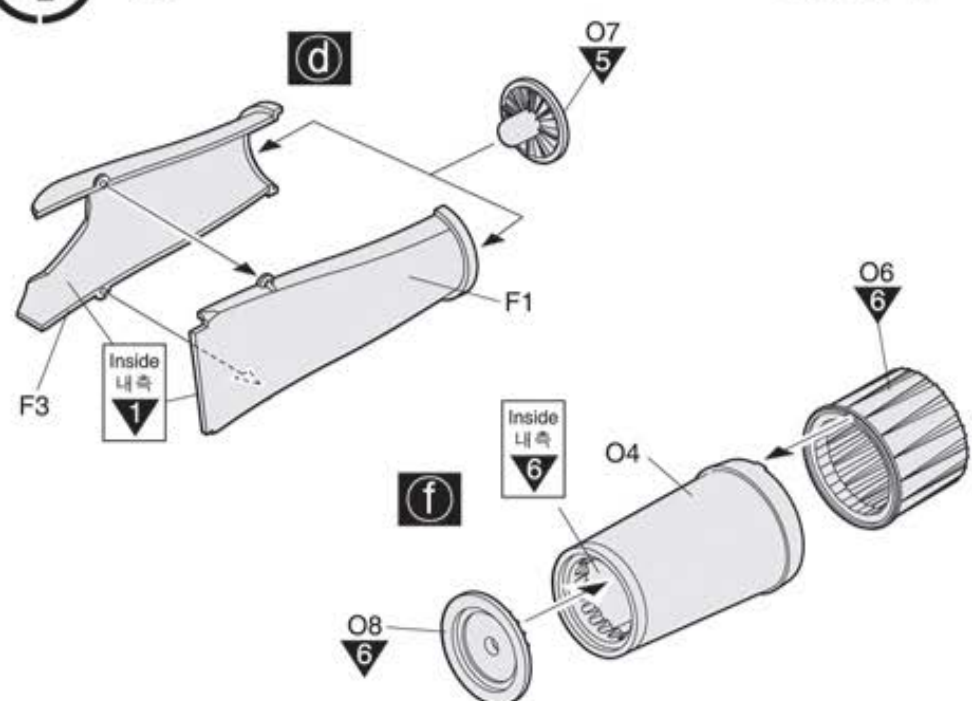


**3** 

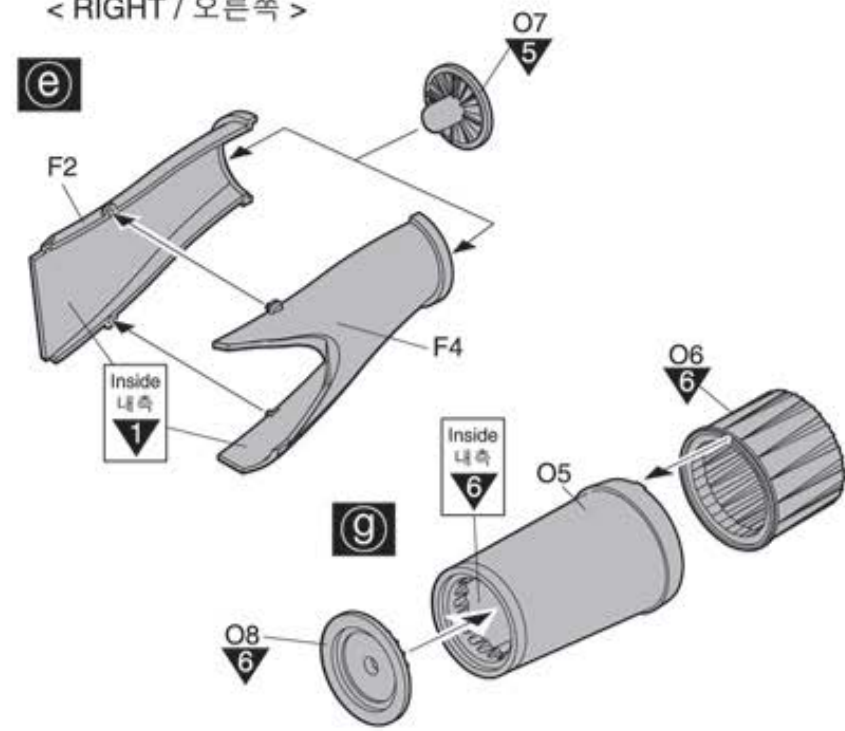


**4** 

< LEFT / 좌 >

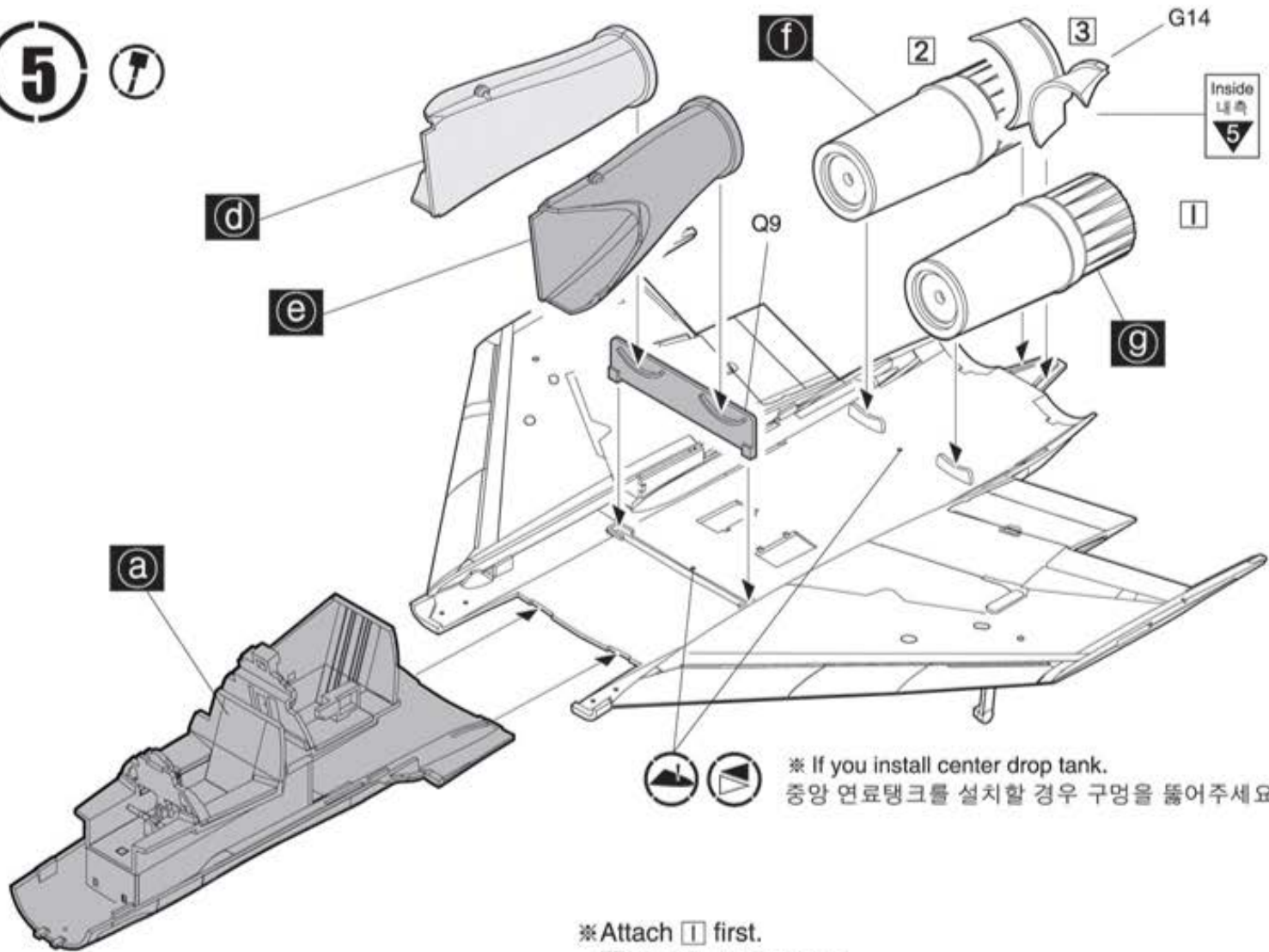


< RIGHT / 오른쪽 >

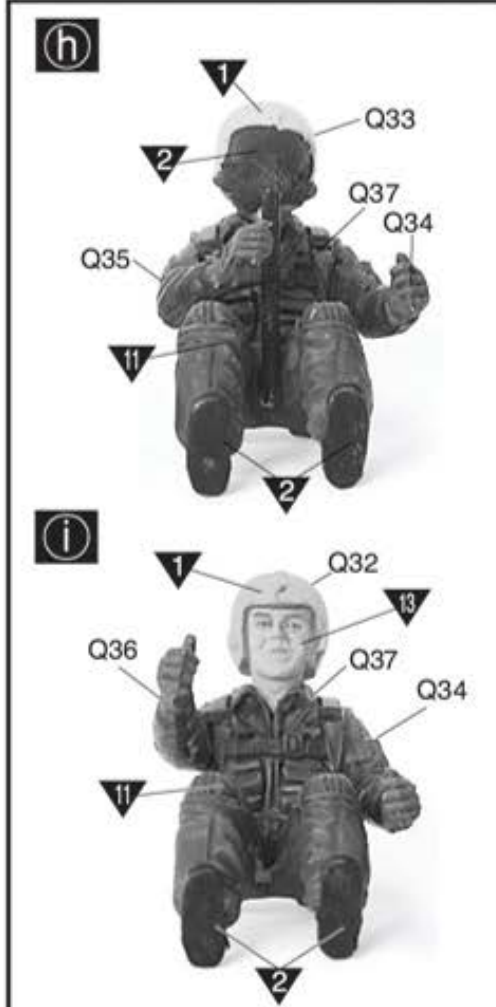




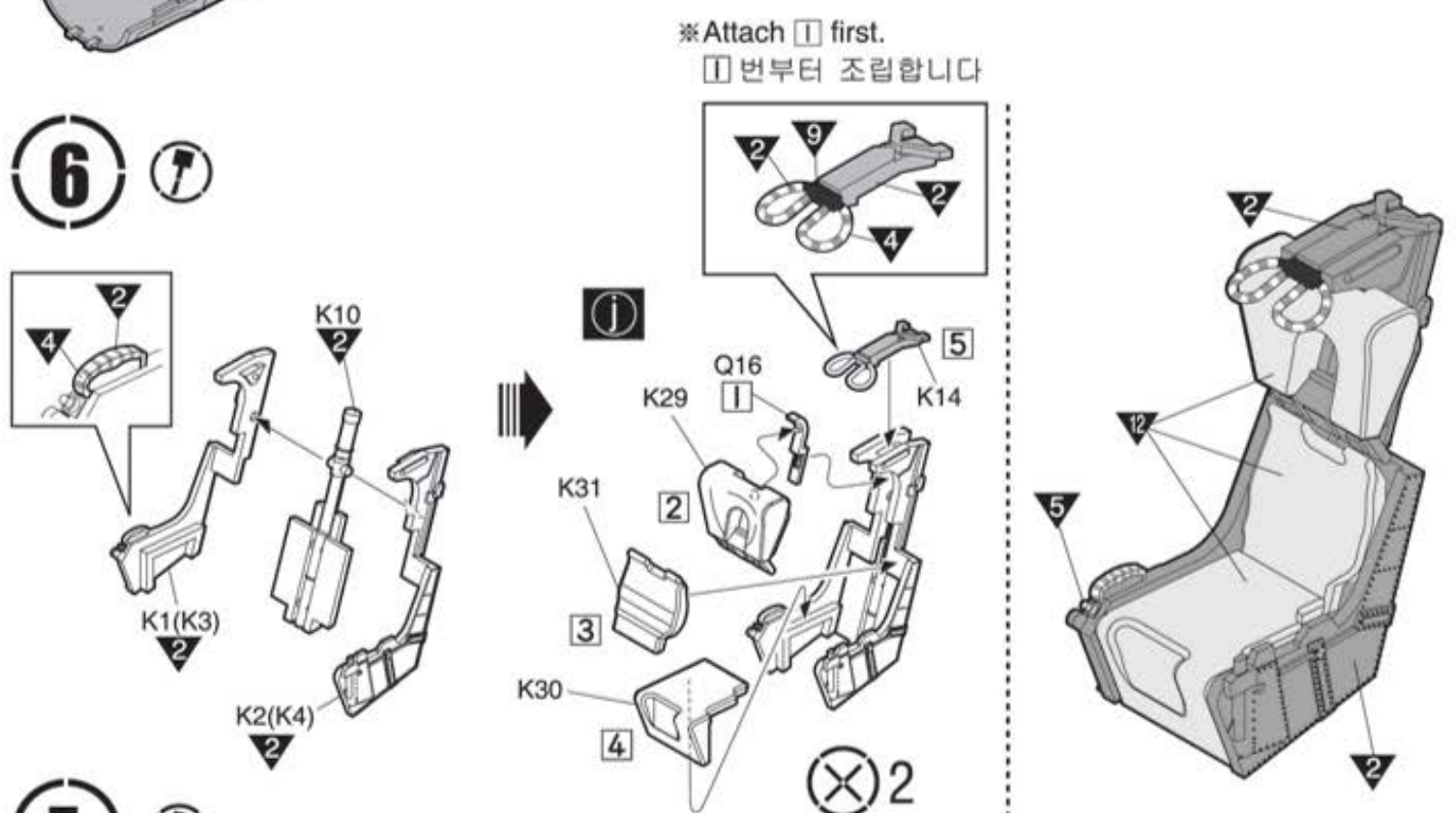
**5** 




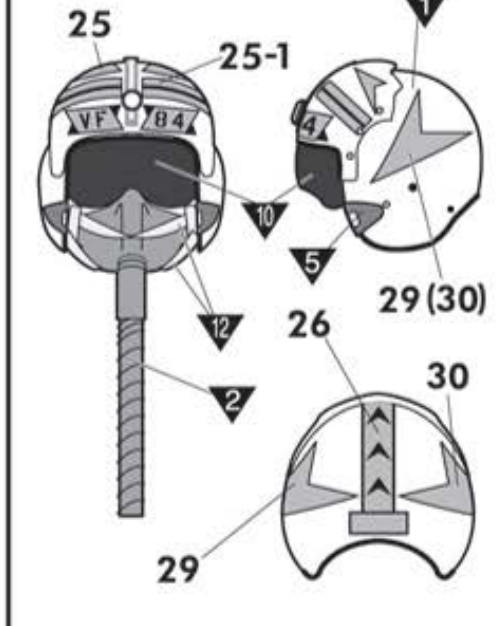
※ Attach I first.  
I 번부터 조립합니다.



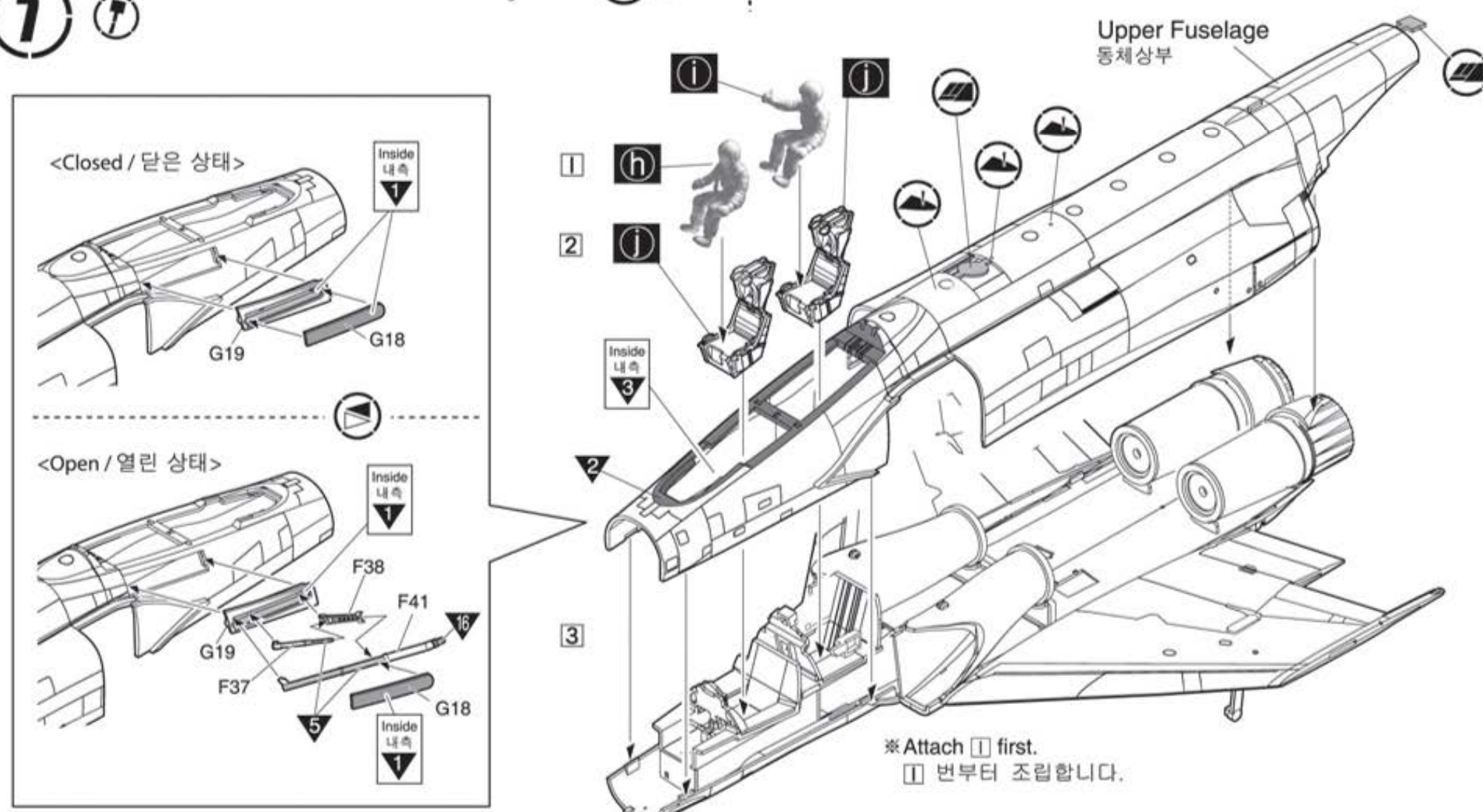
**6** 



 Decal  
전사지를 붙이십시오.

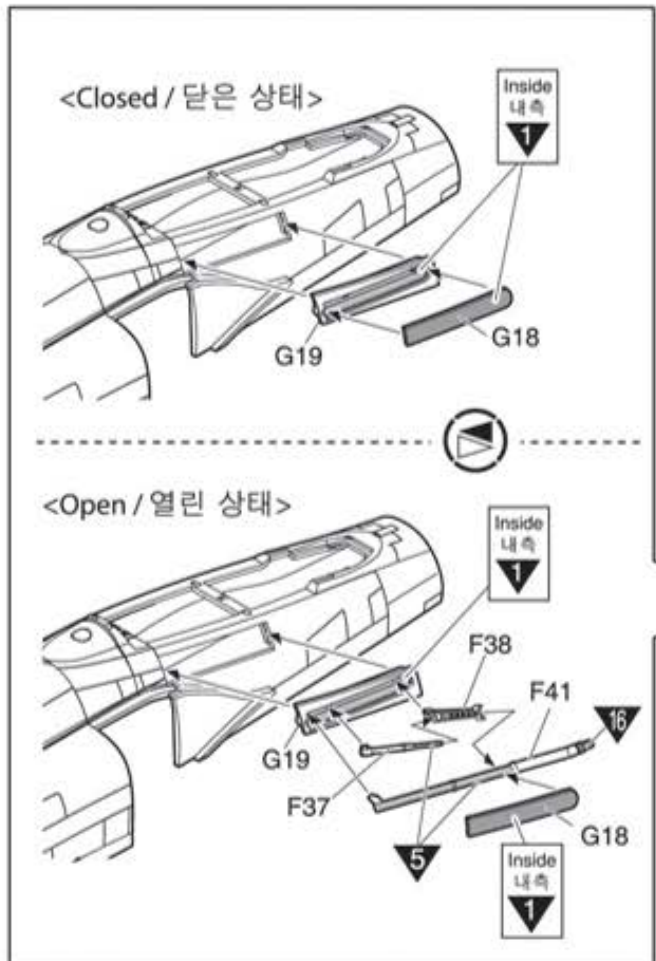


**7** 



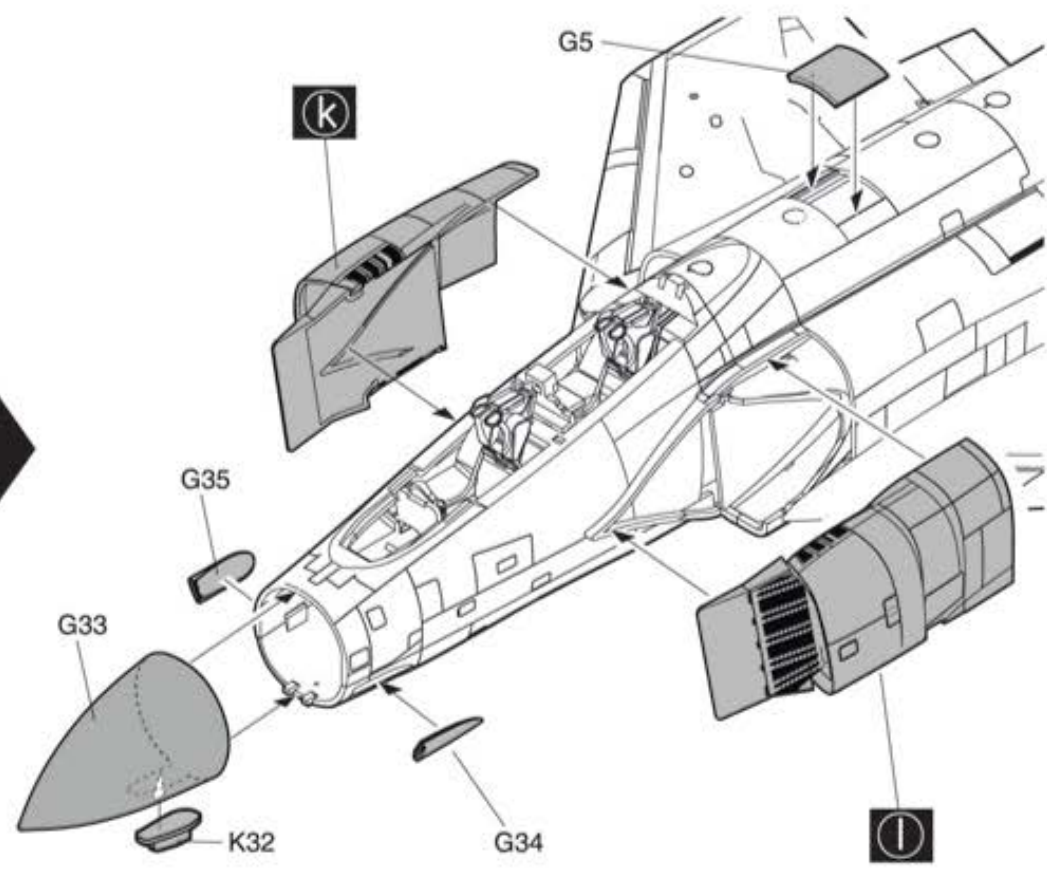
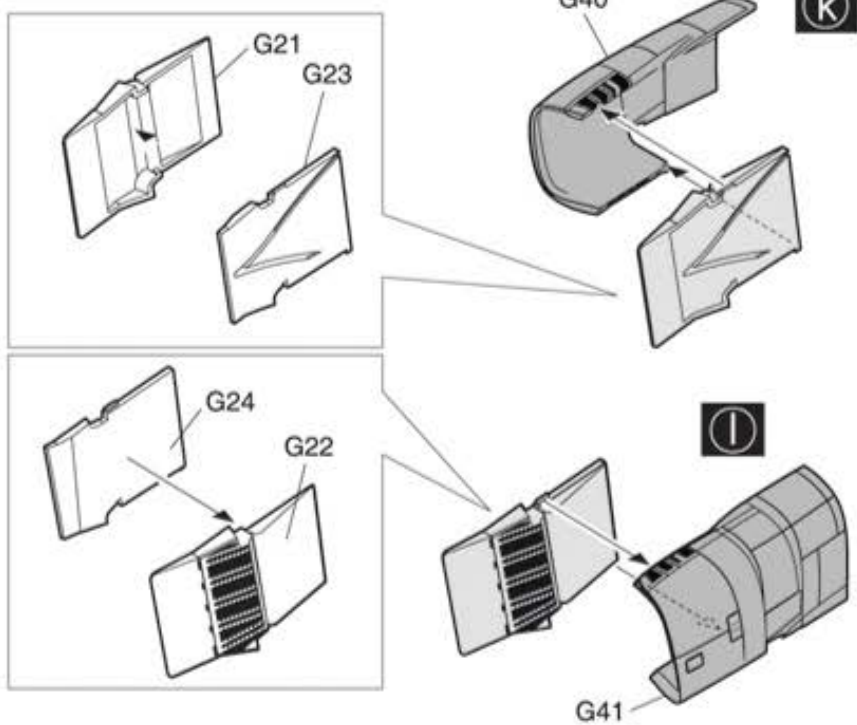
Upper Fuselage  
동체상부

※ Attach I first.  
I 번부터 조립합니다.

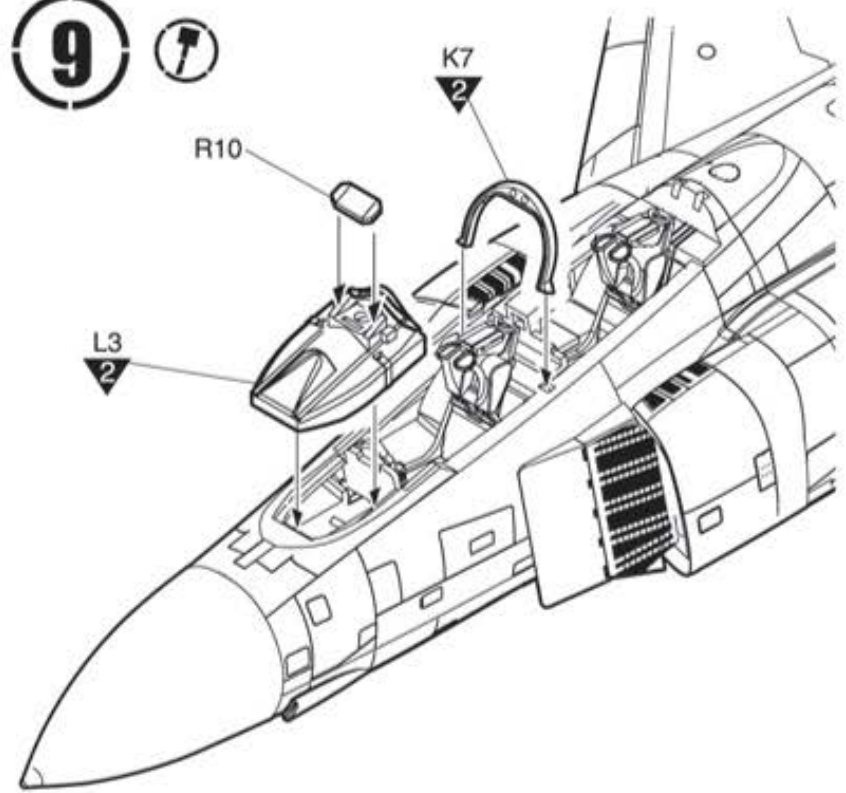




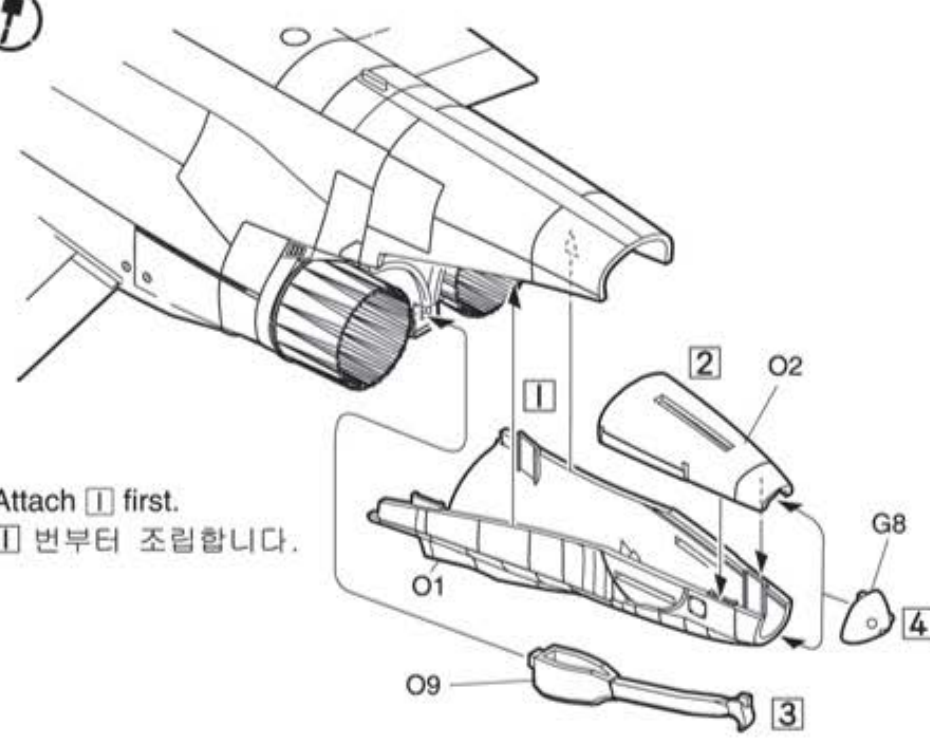
**8** 



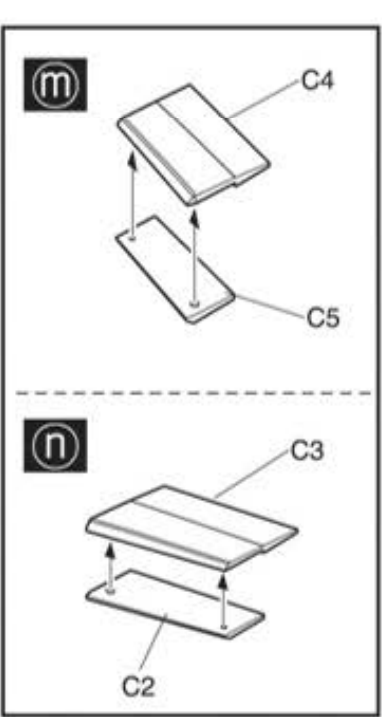
**9** 




**10** 

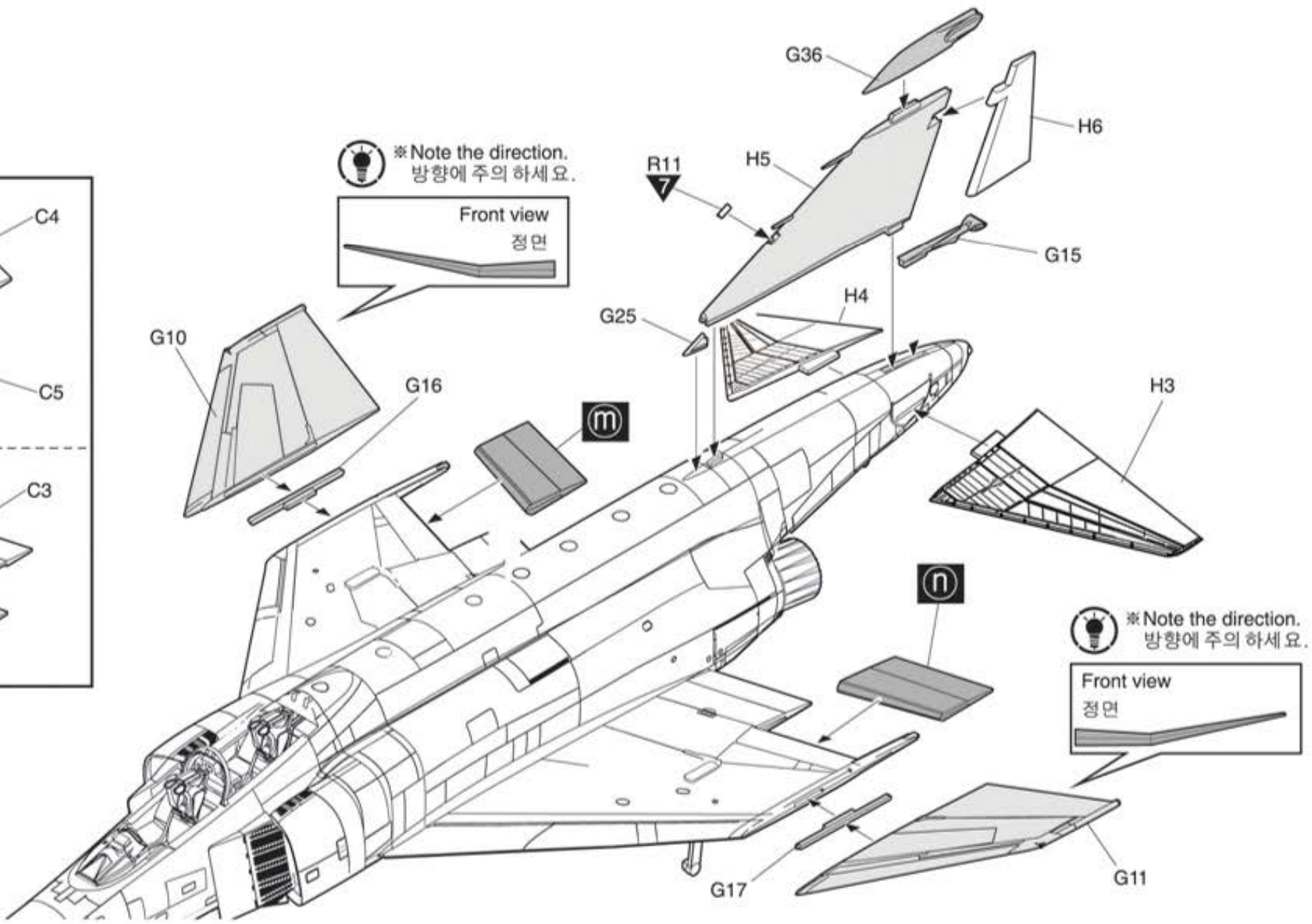



**11** 



 **Note the direction.**  
방향에 주의하세요.

Front view  
정면



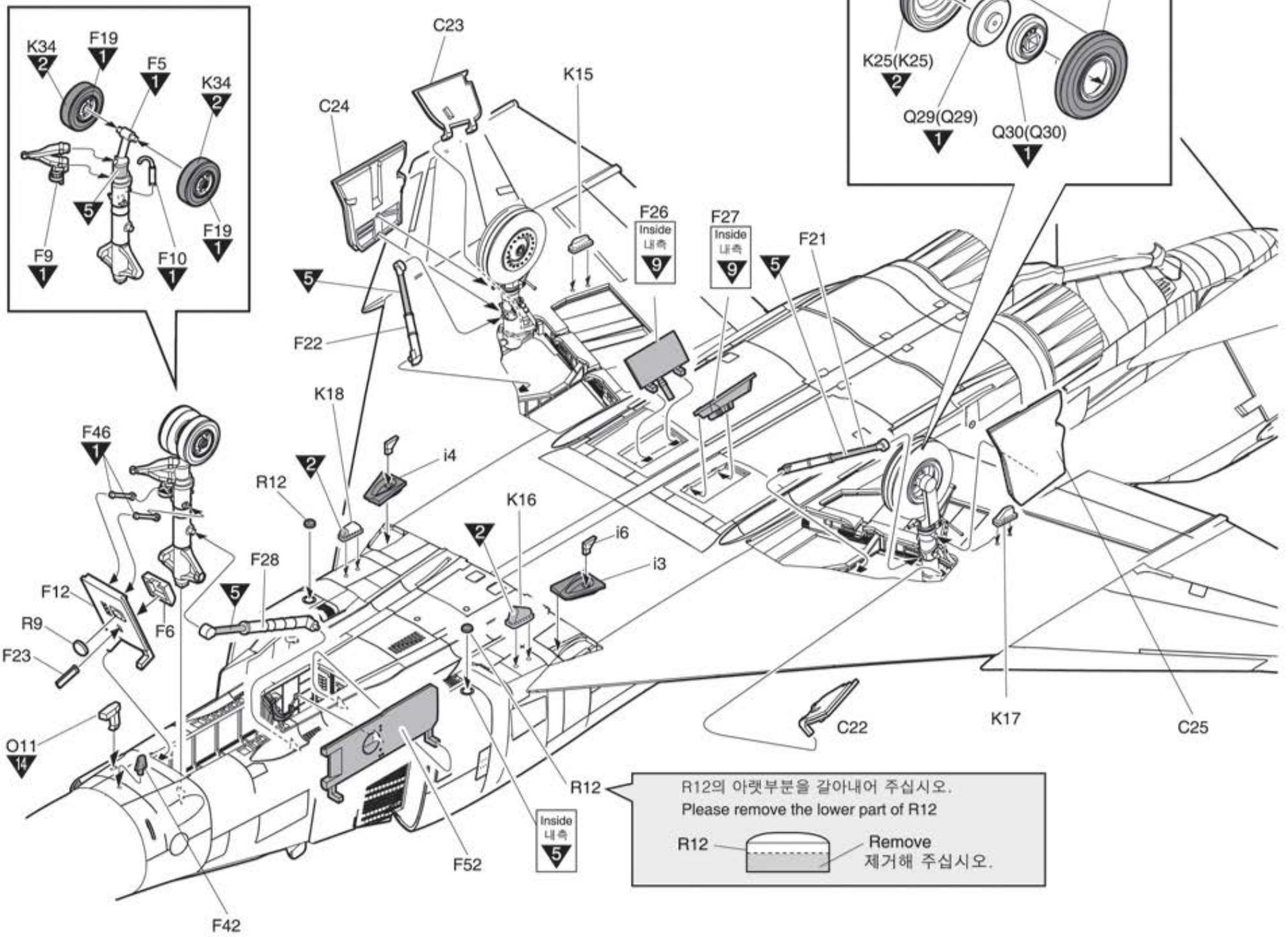
 **Note the direction.**  
방향에 주의하세요.

Front view  
정면



# 12

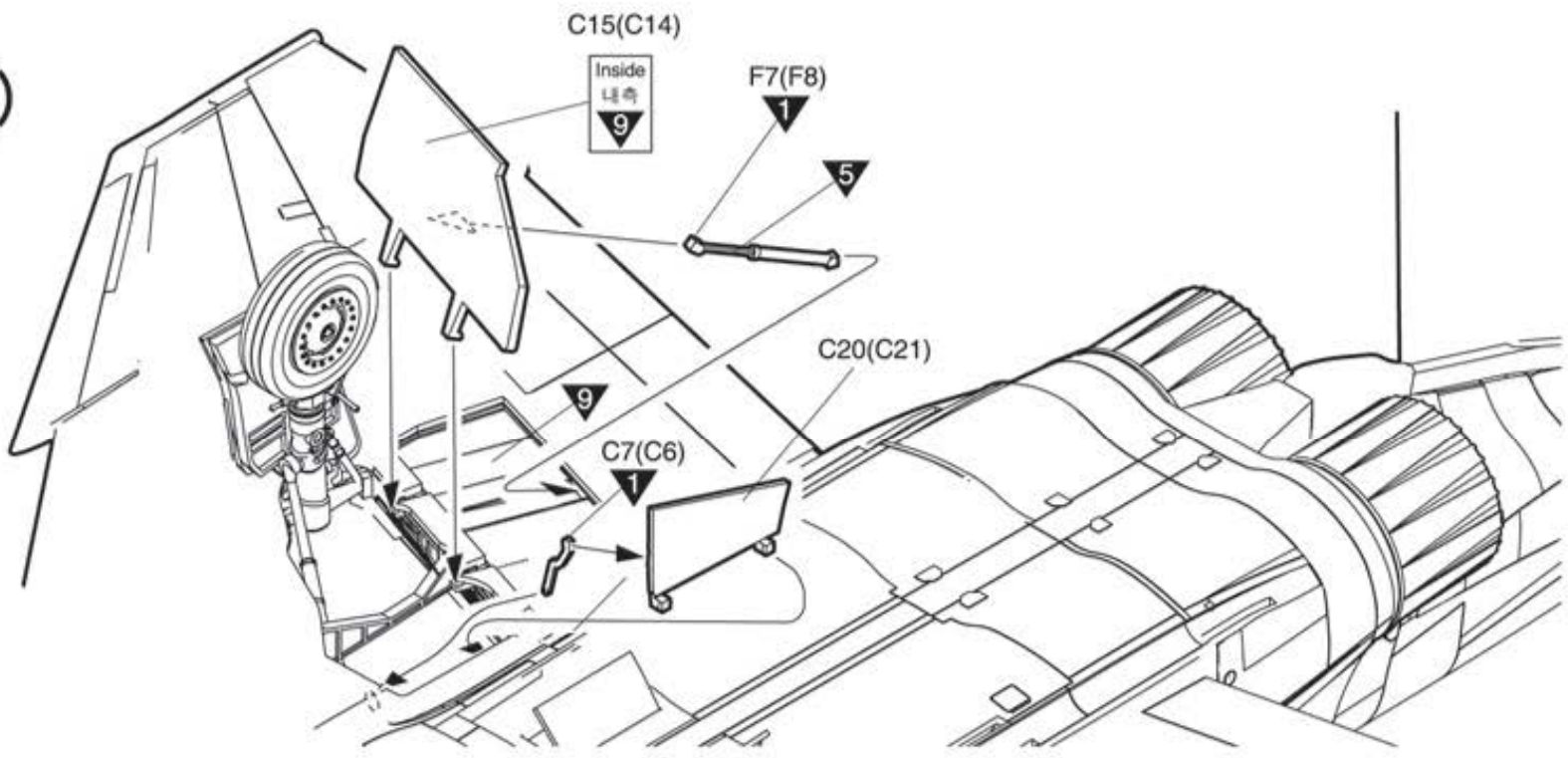
※ ( ) is opposite number.  
( )는 반대측 번호입니다.



R12의 아랫부분을 갈아내어 주십시오.  
Please remove the lower part of R12

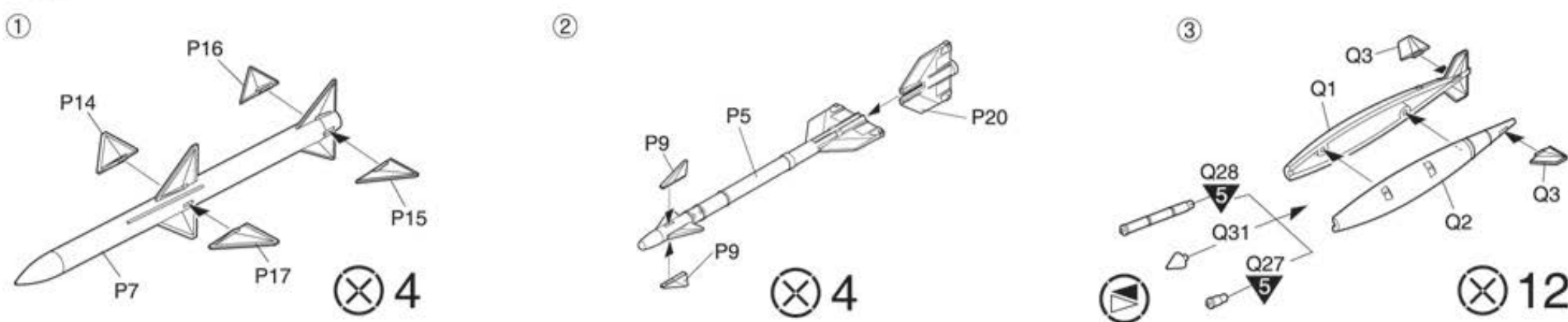
R12 Remove 제거해 주십시오.

# 13



# 14

※ Mounting armed, refer to the separate manual  
무장의 장착 방식은 첨부된 별도의 설명서를 참조하십시오.





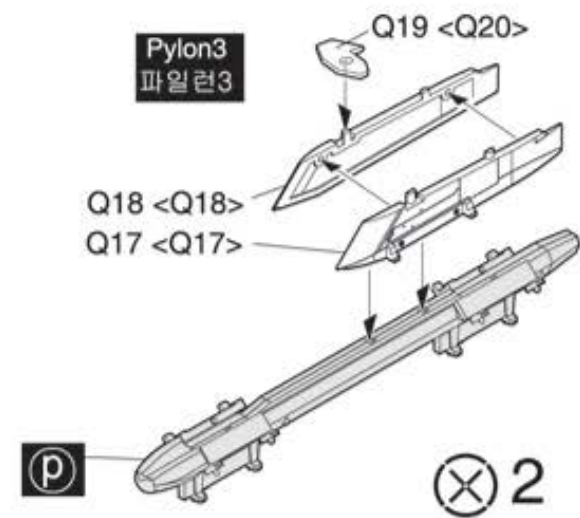
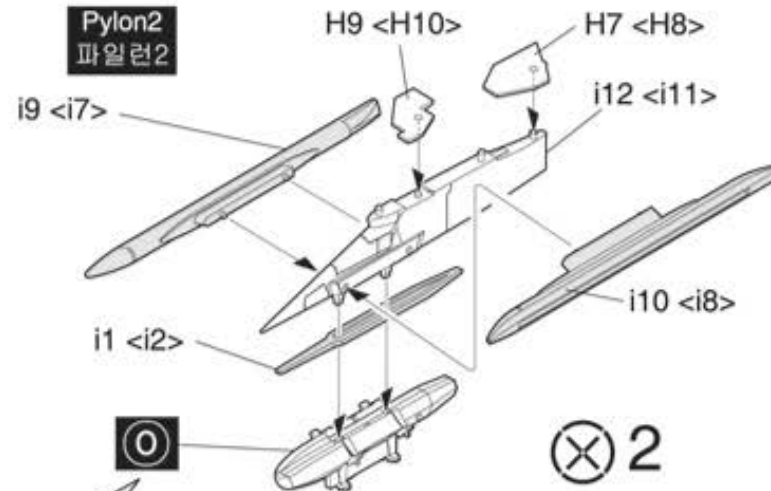
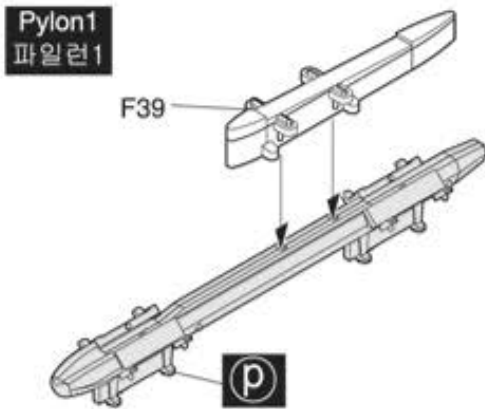
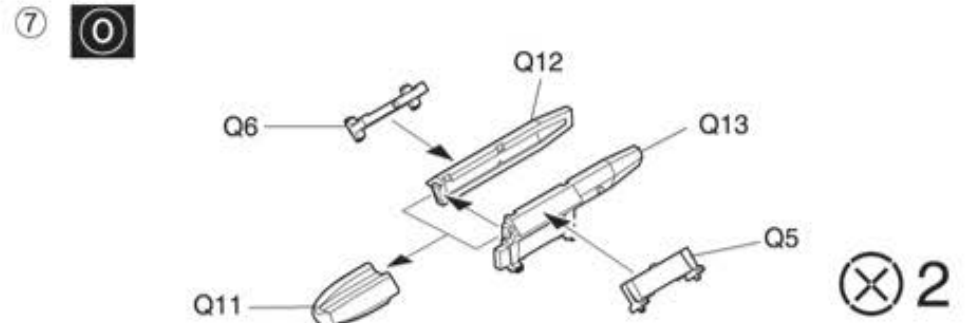
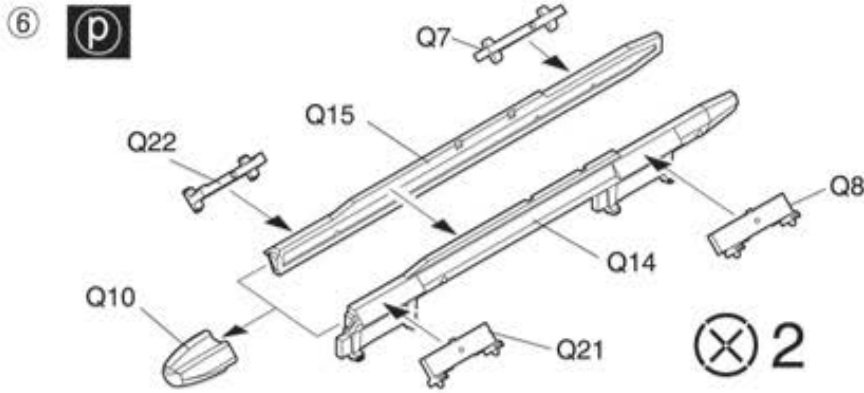
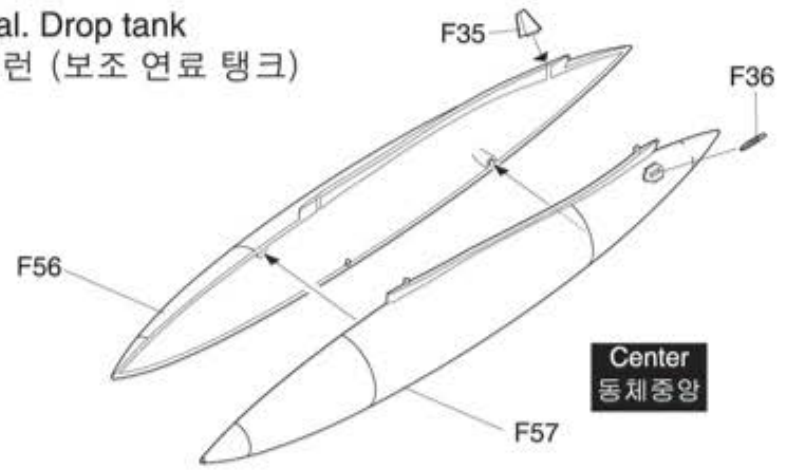
※ Mounting armed, refer to the separate manual  
 무장의 장착 방식은 첨부된 별도의 설명서를 참조하십시오.

< > is Left number  
 < > 는 좌측 번호입니다.

④ 370 gal. Drop tank  
 370갤런 (보조 연료 탱크)



⑤ 600 gal. Drop tank  
 600갤런 (보조 연료 탱크)



※ Do not use 4th mounting arms.  
 4번 무장장착에서는 사용하지 않습니다.

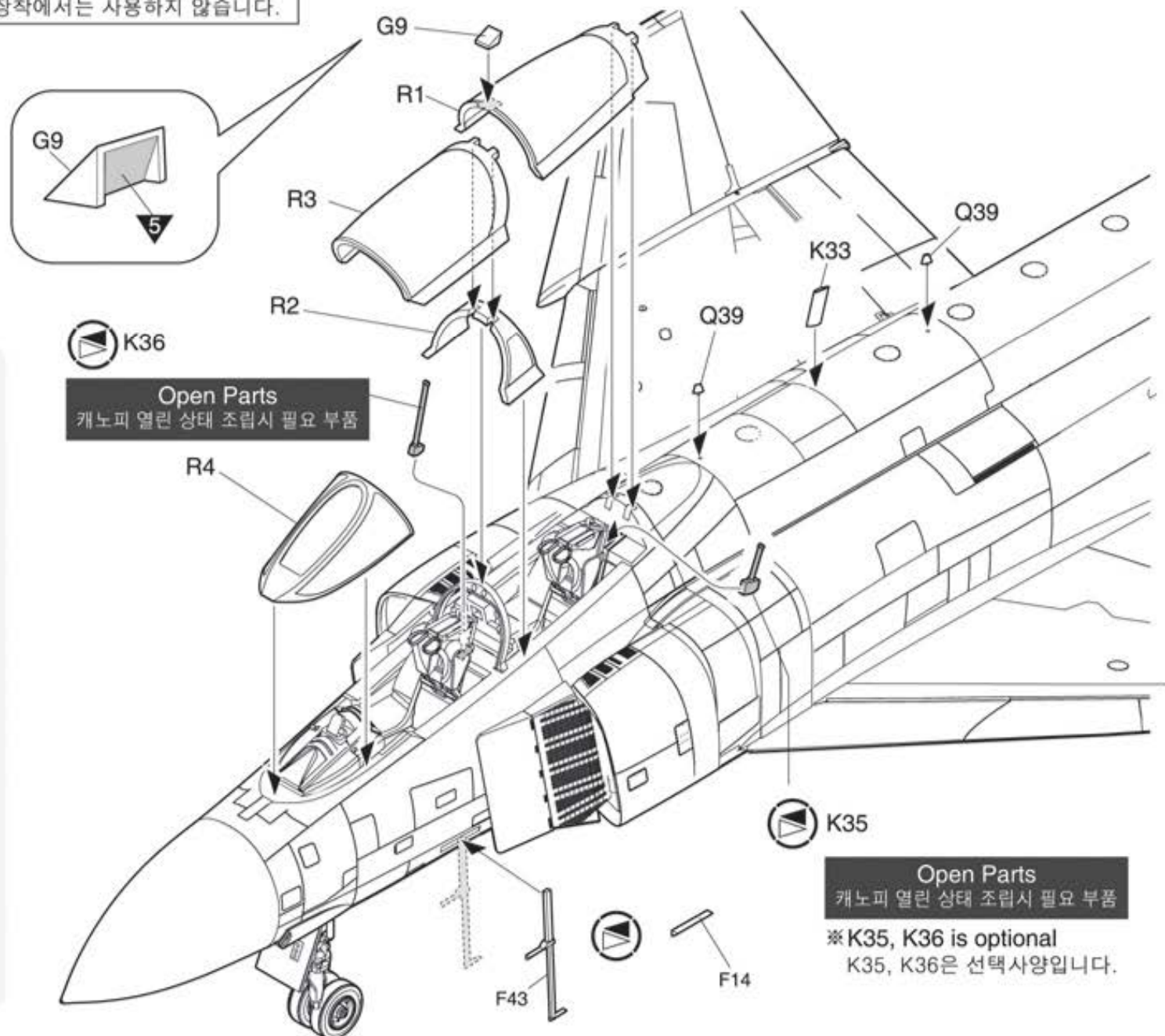
**15** **H**

**How to Painting of Figures**  
 / 인형 칠하는 방법



인형을 칠할 때는 피부에서 옷이나 신발등의 순서로 칠해주는 것이 효과적입니다.

When painting a figure that is effective to fill the order, such as clothes or shoes in the skin.



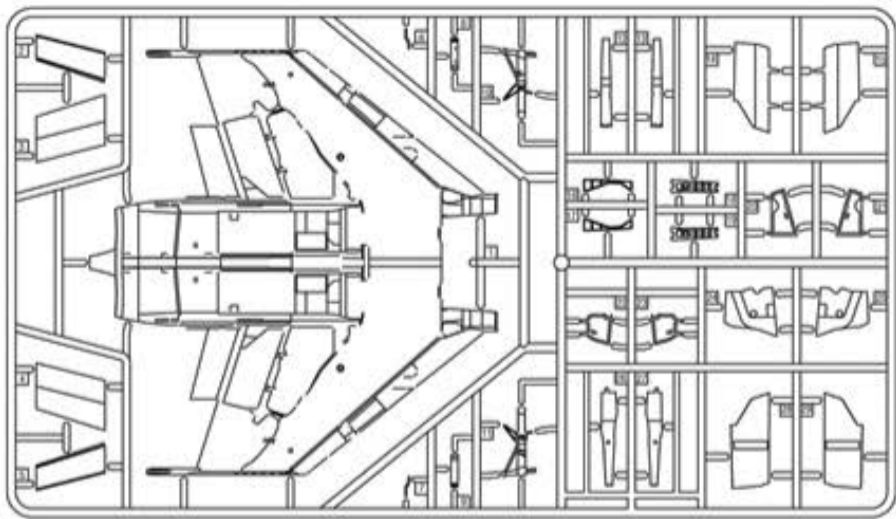
**Open Parts**  
 캐노피 열린 상태 조립시 필요 부품

**Open Parts**  
 캐노피 열린 상태 조립시 필요 부품

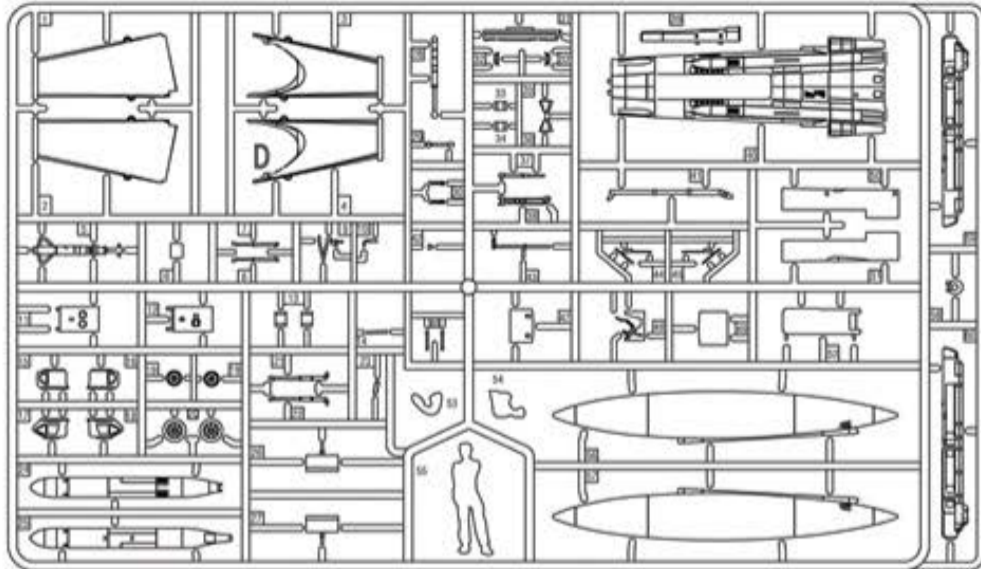
※ K35, K36 is optional  
 K35, K36은 선택사양입니다.



**C**

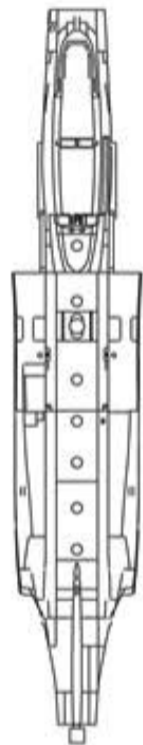
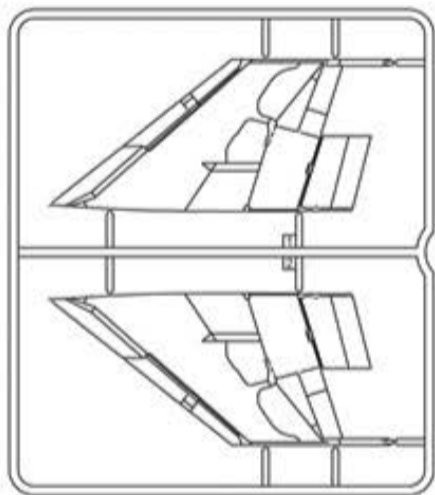


**F**

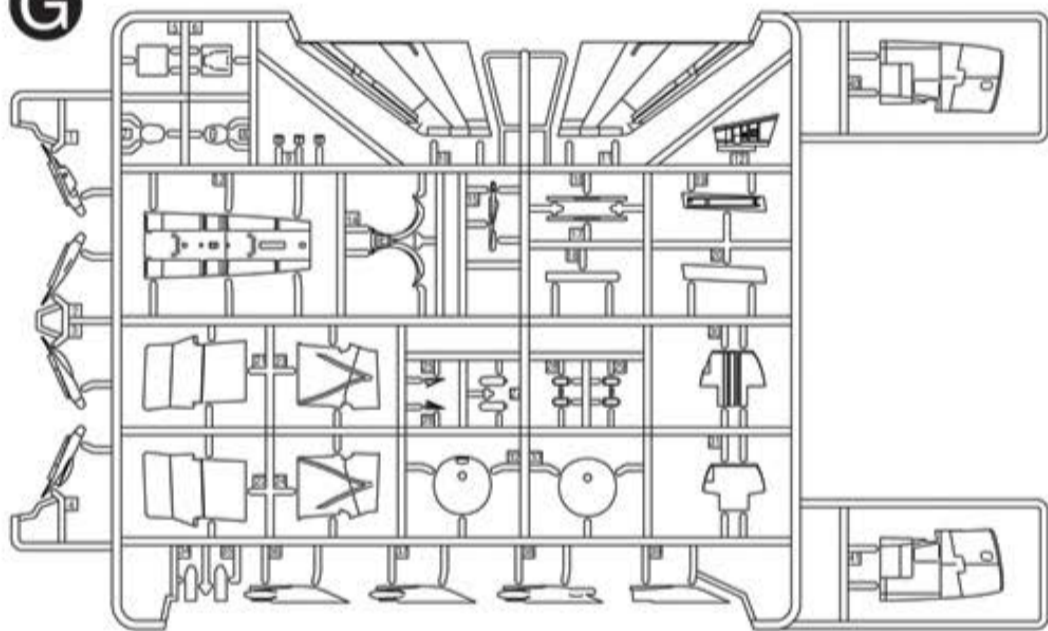


● Upper Fuselage / 동체상부

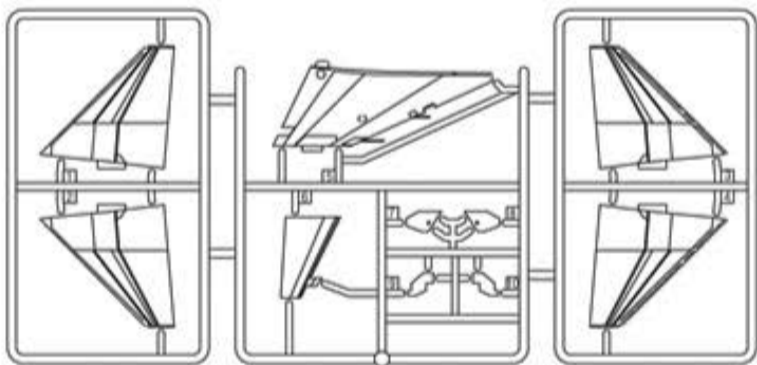
**D**



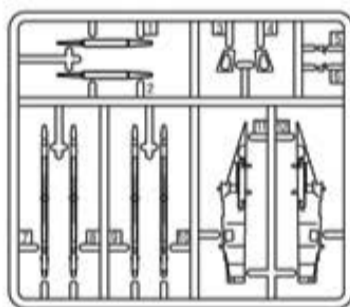
**G**



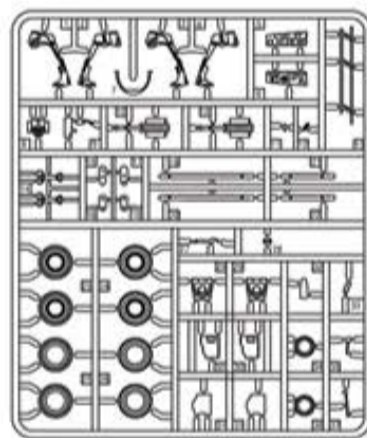
**H**



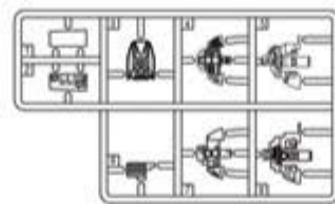
**I**



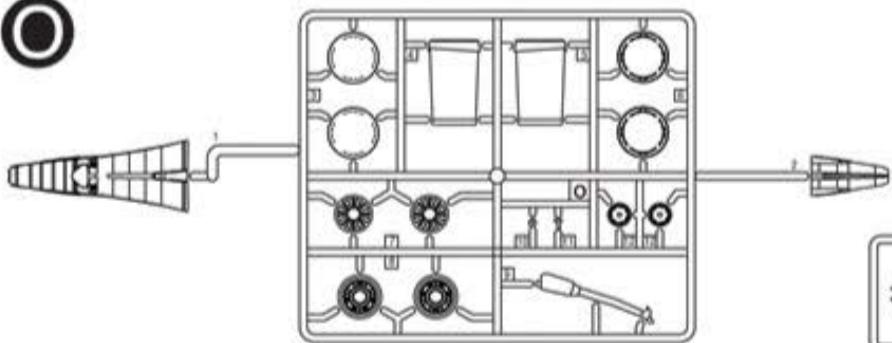
**K**



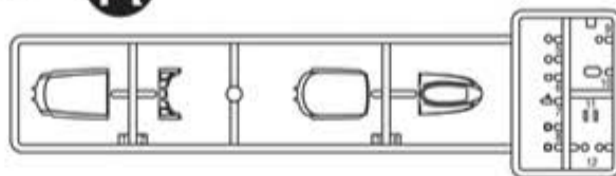
**L**



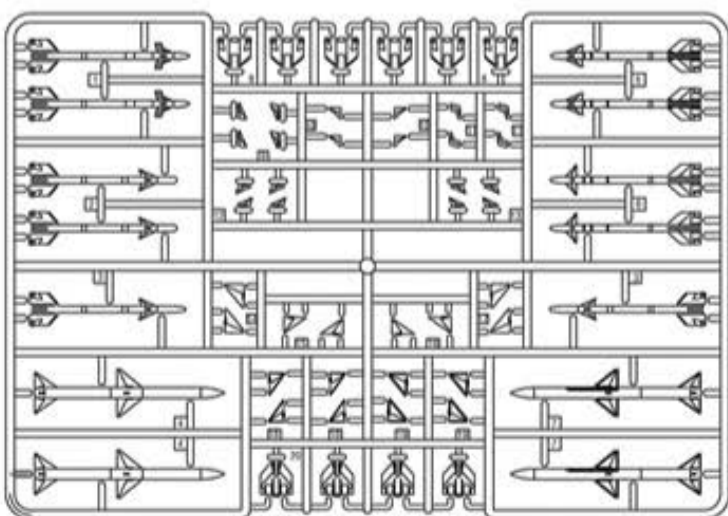
**O**



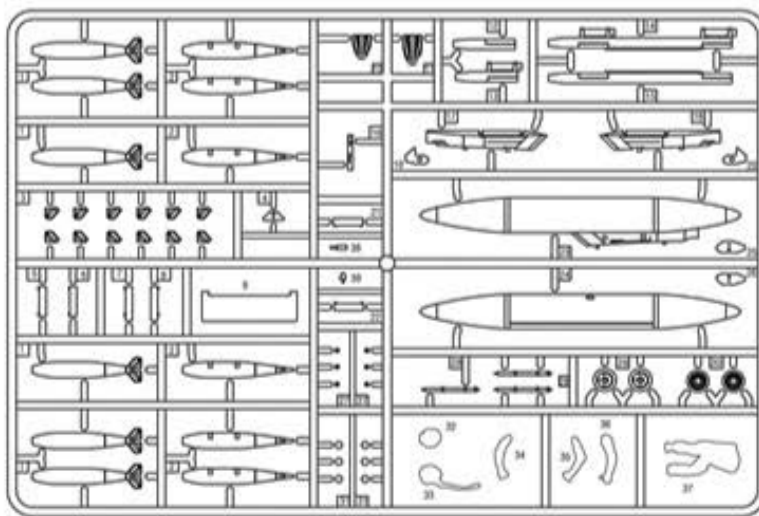
**R**



**P** X2



**Q** X2

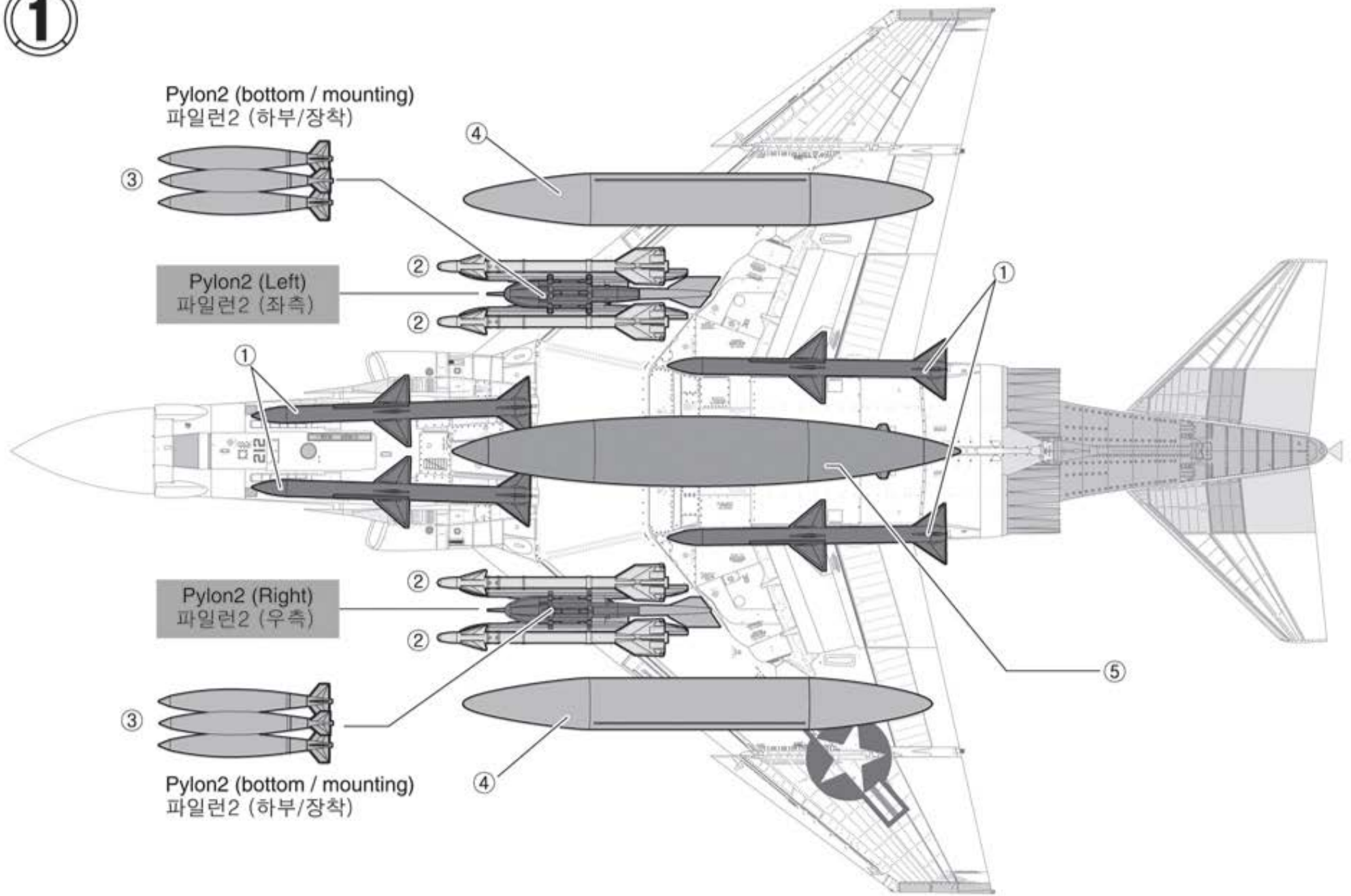


● Decal / 전사지

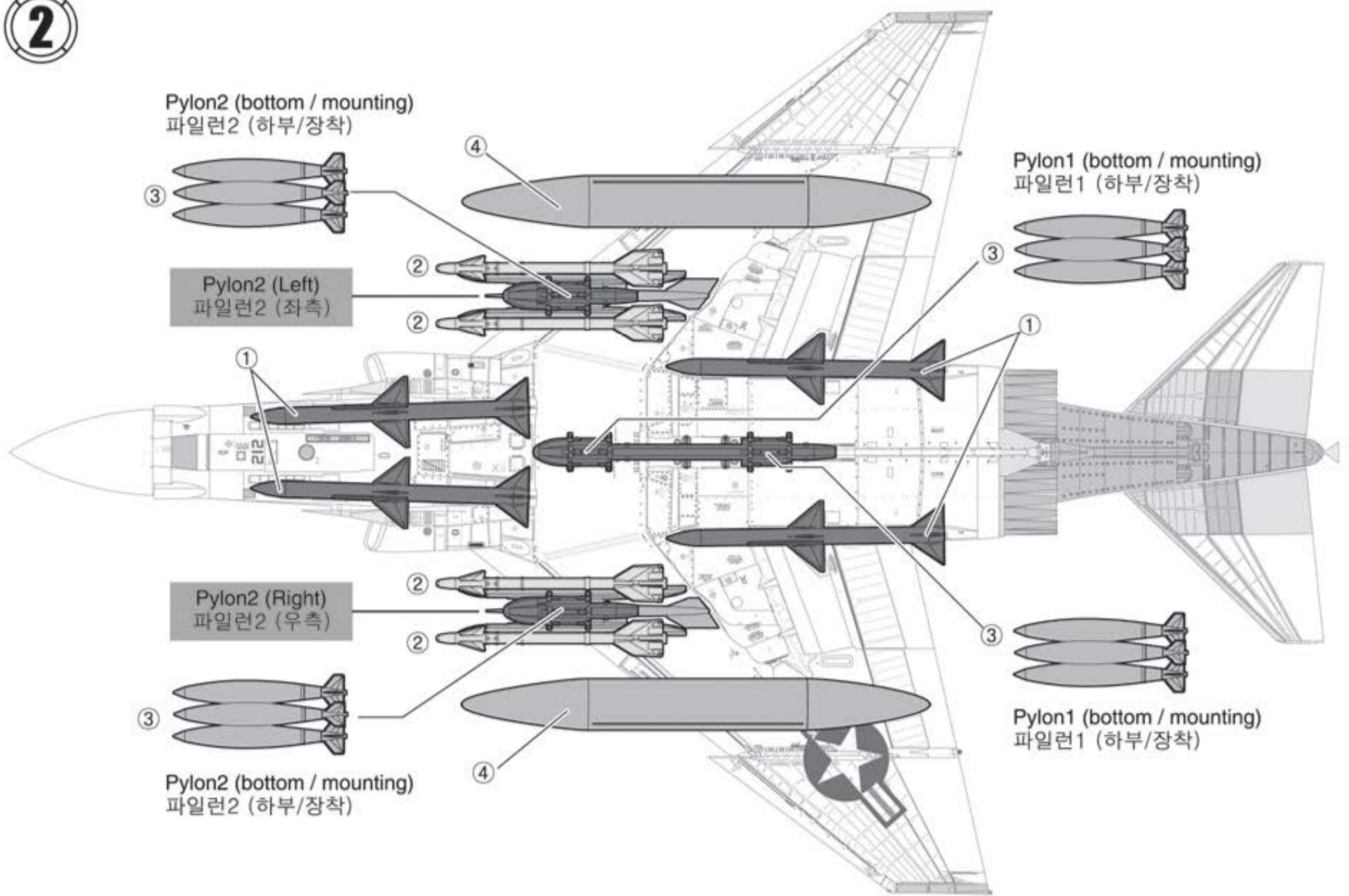
- Unused parts / 불필요 부품
- F11, F13, F15, F16, F17, F18
- F20, F24, F25, F29, F 31, F32
- F33, F34, F58, F59, F60, G1
- G2, G3, G4, G6, G7, G9 X2
- G20, G26, G32, G37, G38
- G39, H1, H2, K12, K13, K19
- K20, K21, K22, K24, K26, K27
- K28, L1, L4, L5, O3, O10, O12
- P1, P2, P3, P4, P4, P6, P7, P8
- P10, P11, P12, P13, P18, P19
- Q4, Q9 X1, Q19 X1, Q20 X1
- Q25 X1, Q26 X1, Q29, Q30 X2
- Q38, R5, R6, R7, R8, R11 X1



1

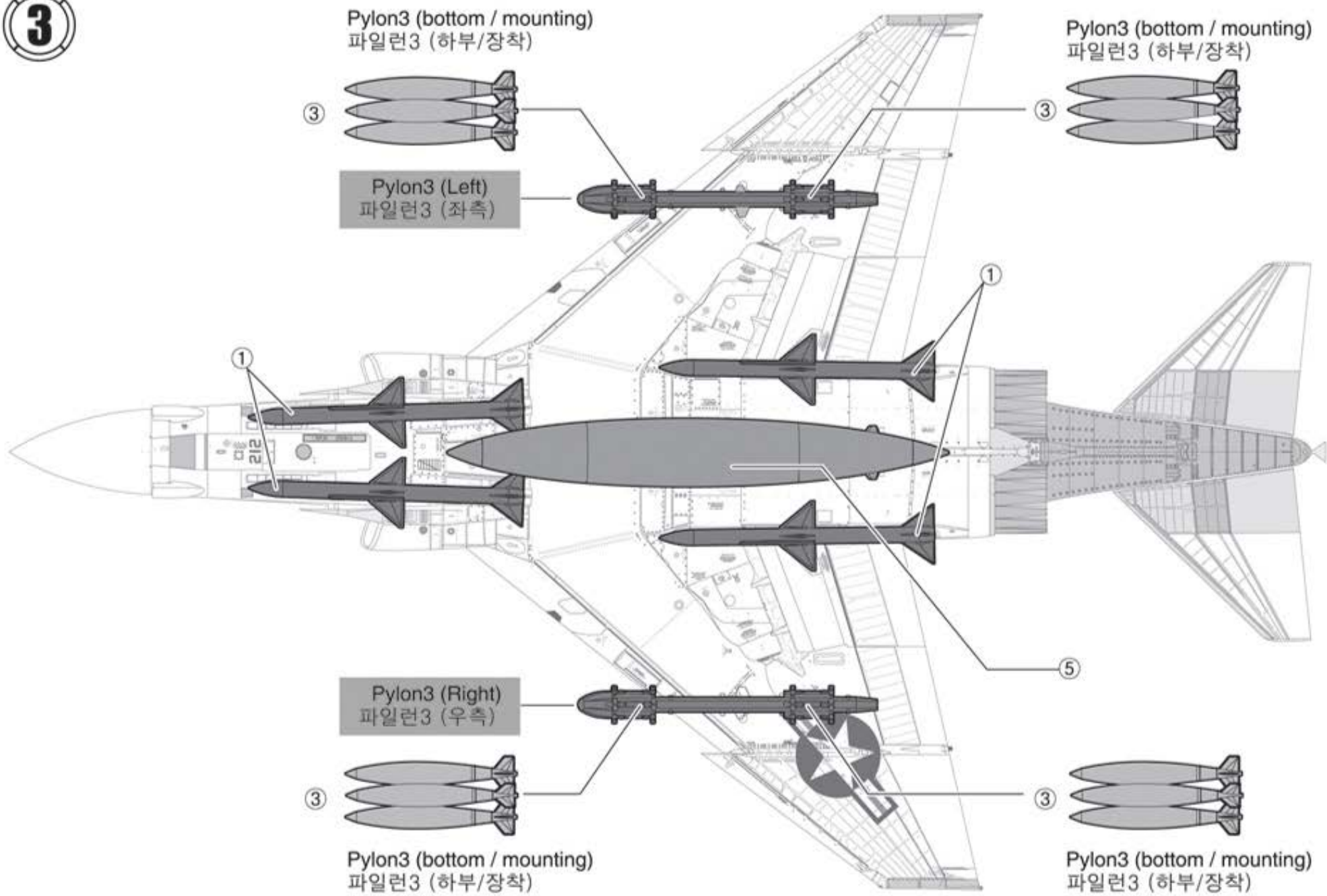


2

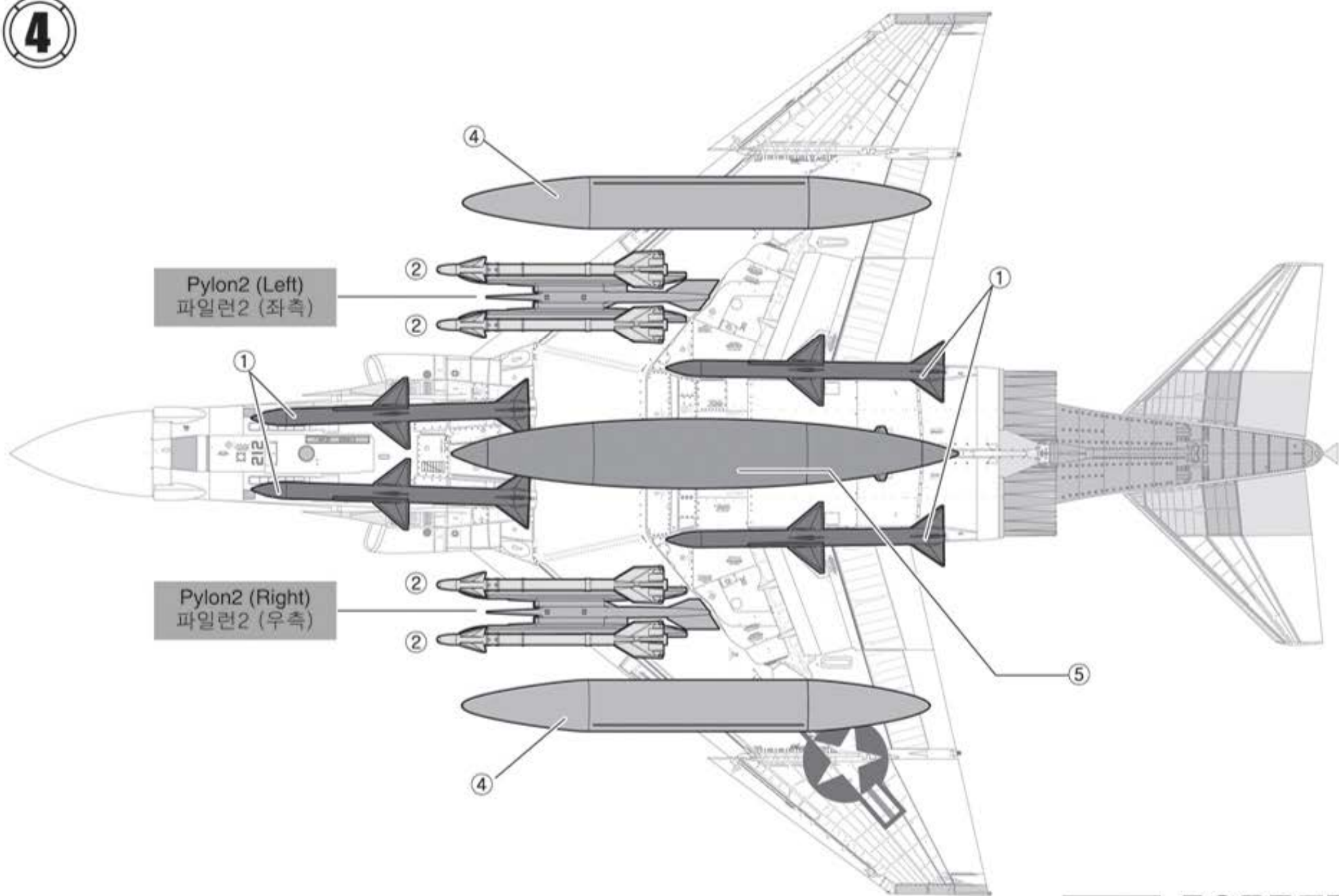




3



4

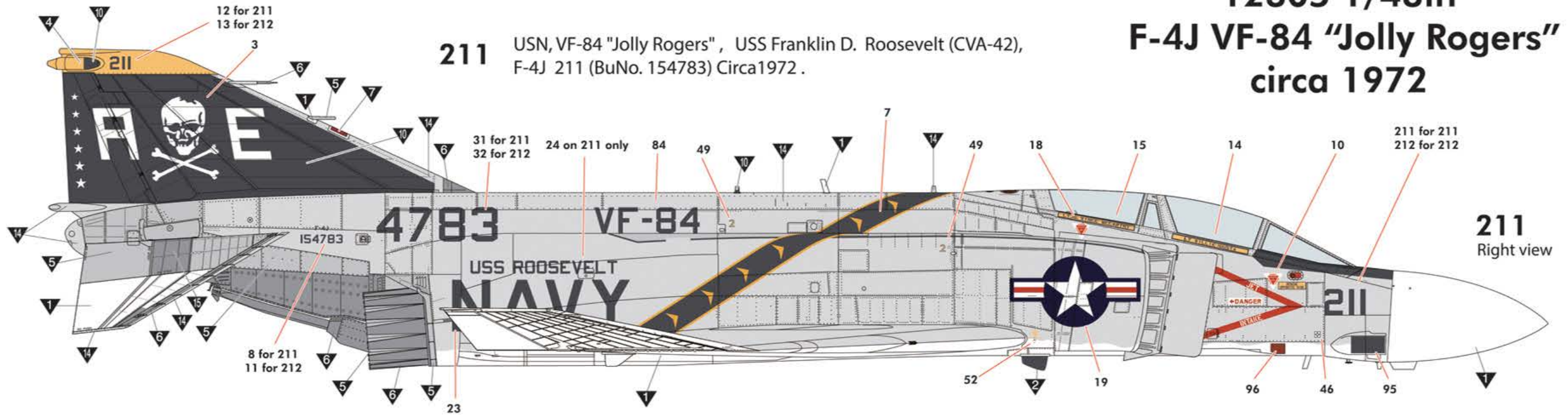








# 12305 1/48th F-4J VF-84 "Jolly Rogers" circa 1972



**211** USN, VF-84 "Jolly Rogers", USS Franklin D. Roosevelt (CVA-42),  
F-4J 211 (BuNo. 154783) Circa 1972.

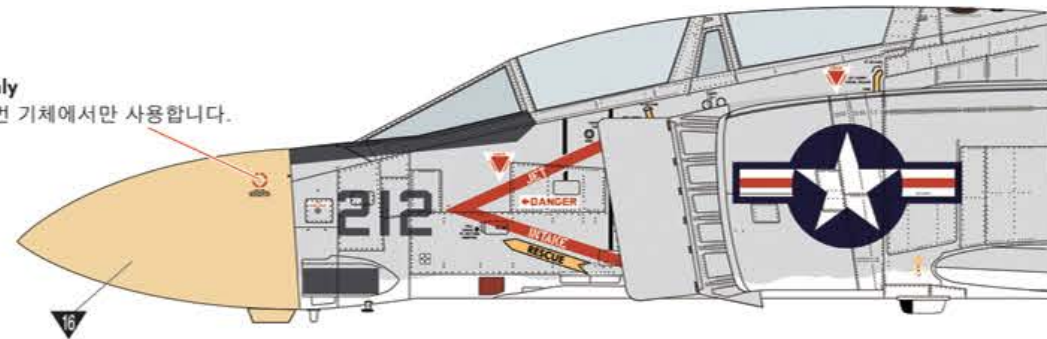
**211**  
Right view

## 212

USN, VF-84 "Jolly Rogers"  
USS Franklin D. Roosevelt (CVA-42),  
F-4J 212 (BuNo. 155854), Circa 1972.

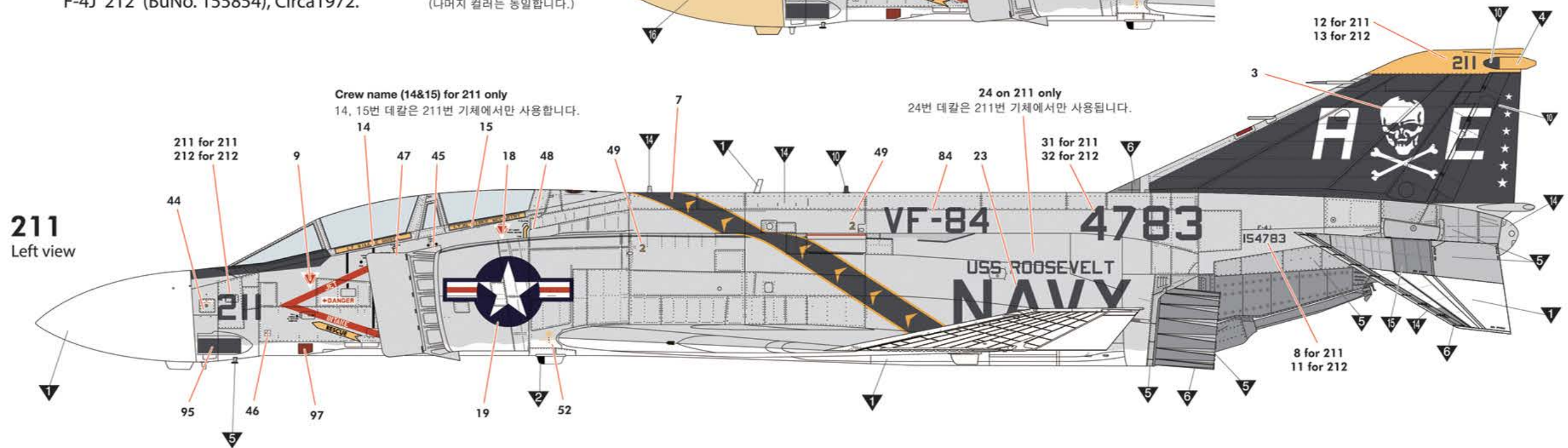
43(43) on 212 only  
43 번 데칼은 212번 기체에서만 사용합니다.

Cream radome on 212  
212 기체는 크림색 레이돔입니다.  
(나머지 컬러는 동일합니다.)



Crew name (14&15) for 211 only  
14, 15번 데칼은 211번 기체에서만 사용합니다.

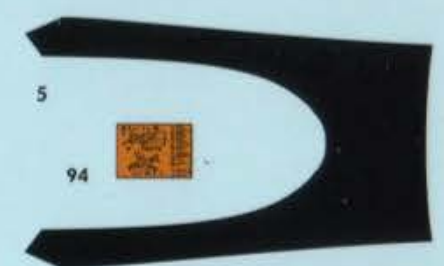
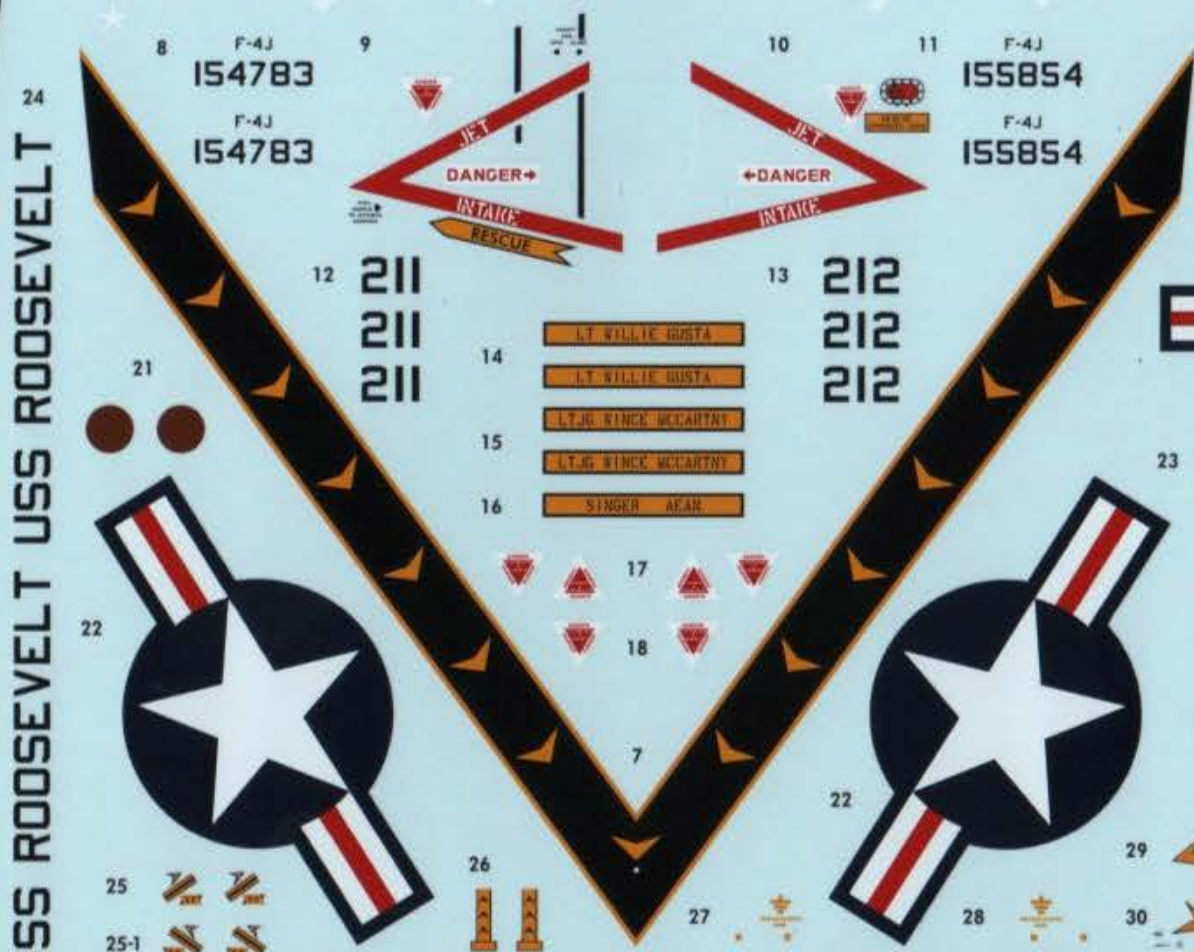
24 on 211 only  
24번 데칼은 211번 기체에서만 사용됩니다.



**211**  
Left view

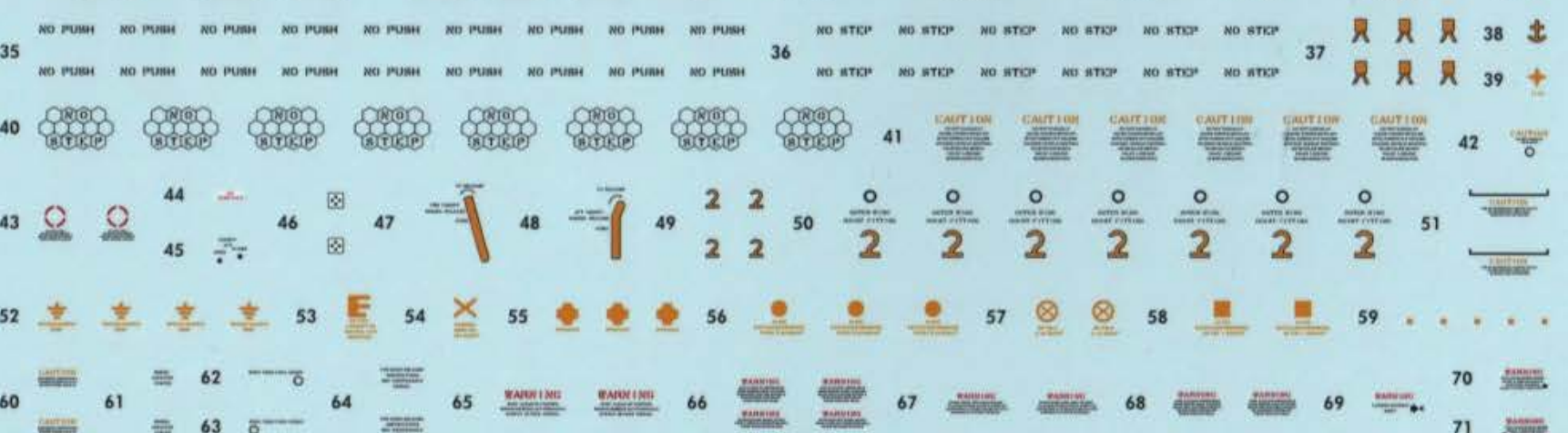


# A E A E



# NAVY NAVY

4783 5854  
4783 5854



211 212  
211 212  
211 212  
211 212  
VF-84  
VF-84

