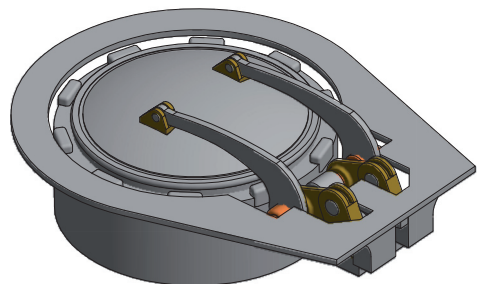


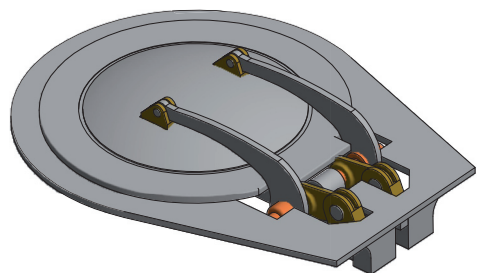
# INSTRUCTIONS REPAIR KIT HATCHES DECK FOR BORDER BS-001 TYPE: VIIC U-552 / U-96 / U-82

1/35

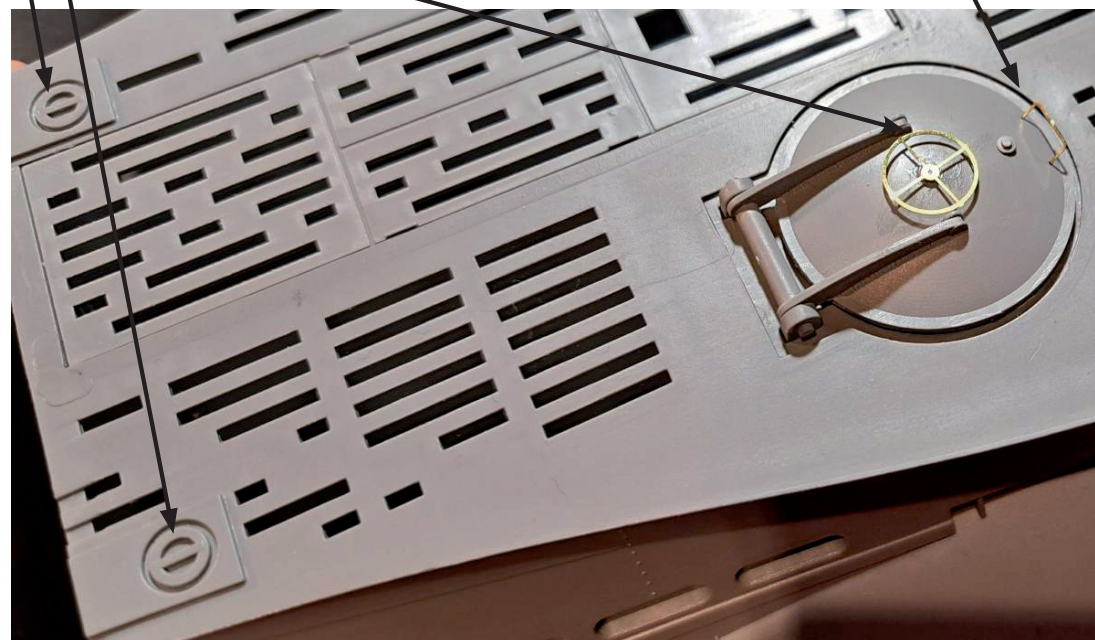
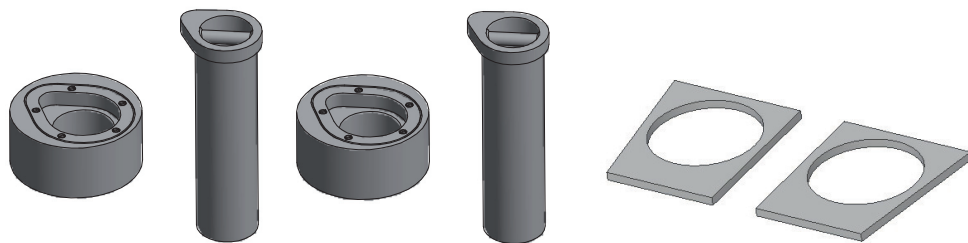


U-552  
~~SKU-DH-Early~~

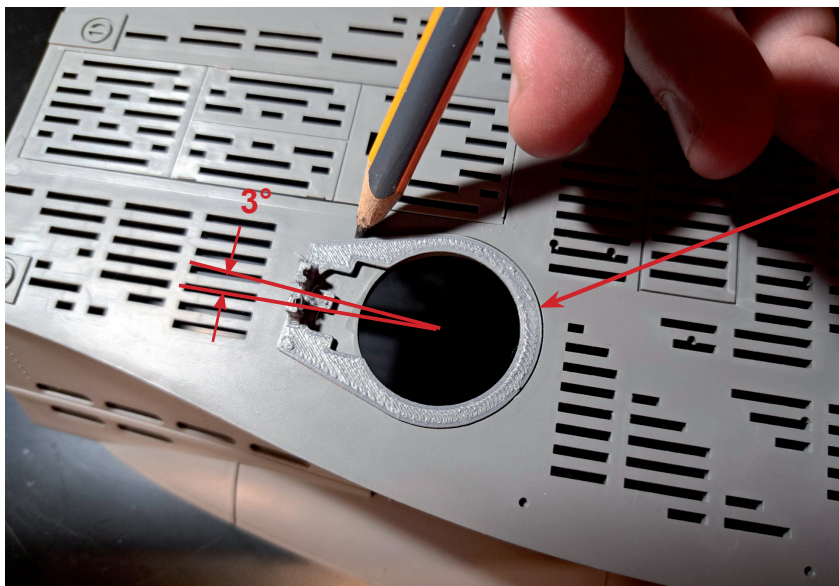
these hatches have the wrong shape, location and size. They never really looked like this. U-552 had a different type of hatch than U-96 and U-82. the hatch never had a valve and the axis of the hatch was below deck level.



U-96 , U-82  
~~SKU-DH-Late~~



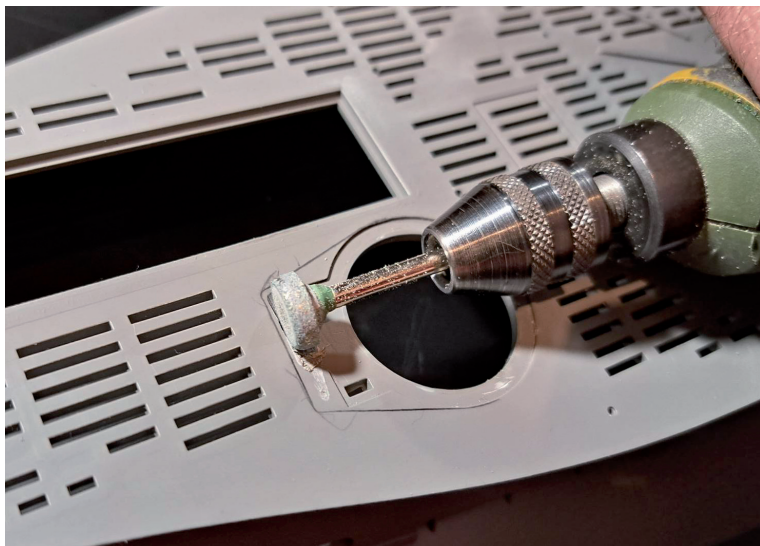
fit the hatch liner and trace onto the deck.  
the front hatch was slightly offset inwards.



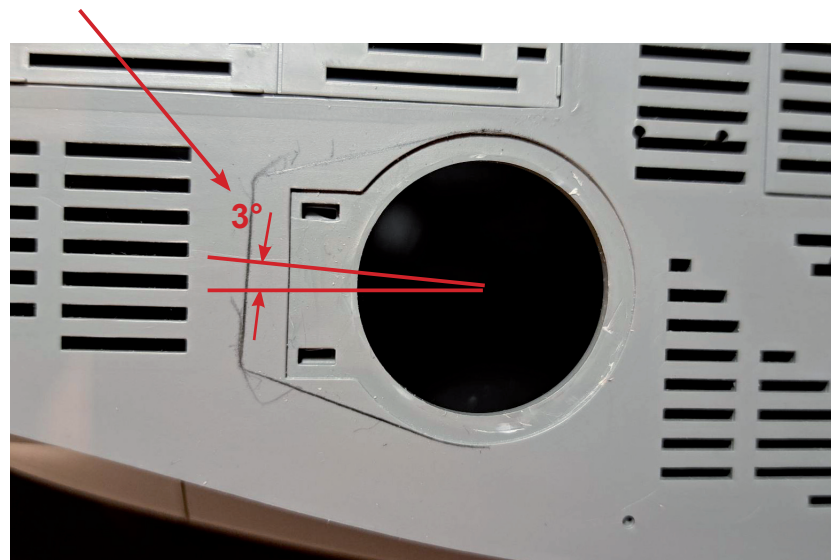
clean the pad area, remove the positive trim.



sand the contour so the liner can be glued flush  
with the deck.



only front hatches

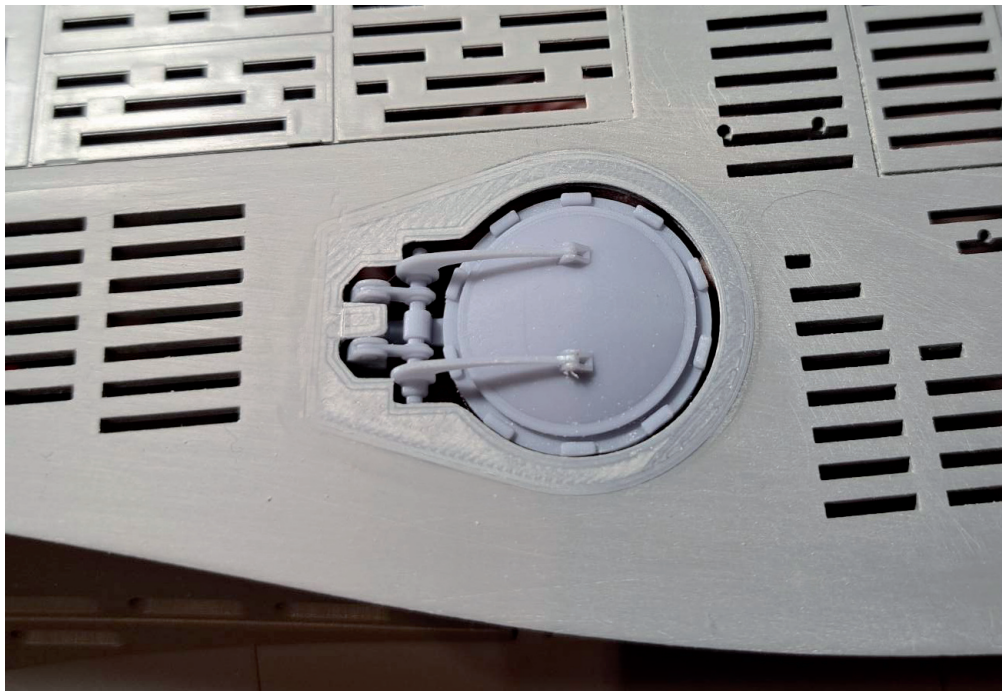




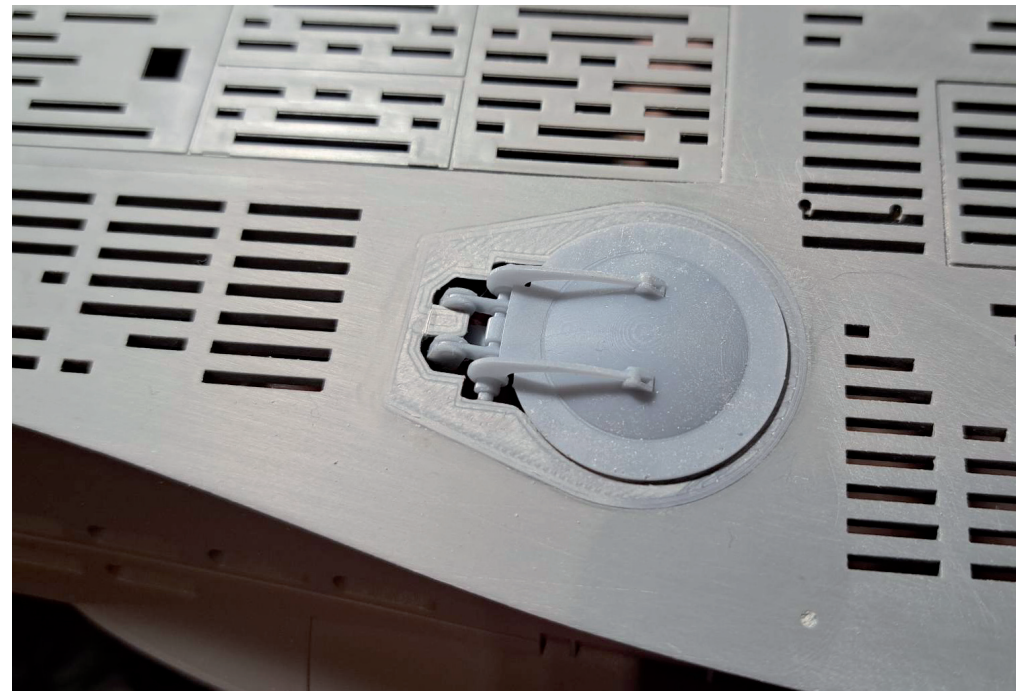
stick the liner flush with the deck and sand the surface.



U-552



U-96, U-82





Remove

