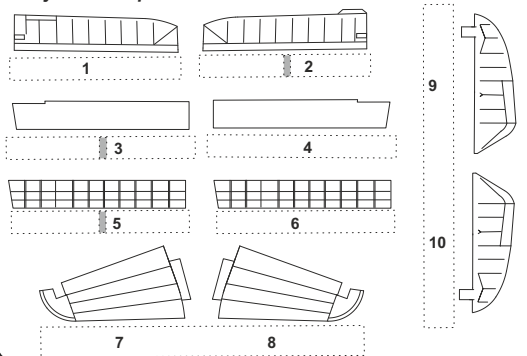


7386
1/72

P-40
Control Surfaces
for Special Hobby kit



Polyurethane parts PUR



Díly ohnuté popř. pokroucené vlivem teplotních změn a stárnutí materiálu, mohou být narovnány do požadovaného tvaru pomocí proudu teplé vody nebo vzduchu (fén na vlasy). Různé drátky a tyčinky nejsou přiloženy.
K lepení použijte kyanoakralátové lepidlo.
Kontaktní plochy doporučujeme před lepením odmastit.

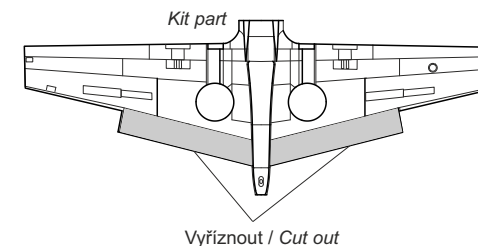
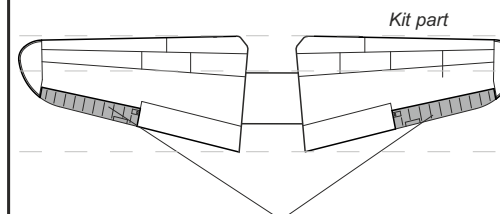
Parts slightly distorted and bended owing to temperature changes or due to material ageing can be straightened to requested shape by hot water or hot air jet (hair dryer). Wires and holes not included.
For best results gluing use cyanoacrylate glue. Contact areas ungrease is recommended before gluing.

Visit our official website and e-shop at
www.cmkkits.com

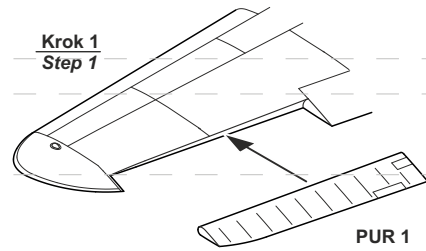
OSTATNÍ SETY CMK / OTHER 1/72 CMK SETS

7386 P-40 Control Surfaces - for Special Hobby kit
7387 P-40 Armament Set for - Special Hobby kit
Q72 293 P-40E/F/K/L/M and N-1 - Seat for Sp. Hobby kit
Q72 295 P-40 Wheels - Diamond Tread for Sp. Hobby kit
Q72 296 P-40 Wheels - Block Tread for Sp. Hobby kit
Q72 297 P-40 Wheels - Cross Tread for Sp. Hobby kit
Q72 298 P-40 Wheels
- Diamond and Hole Tread for Special Hobby kit
Q72 299 P-40E/F/K/L and N-1
- Seat with Belts for Special Hobby kit

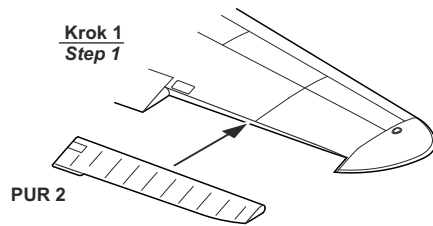
1. Úprav dílů modelu / Adjustment of kit parts



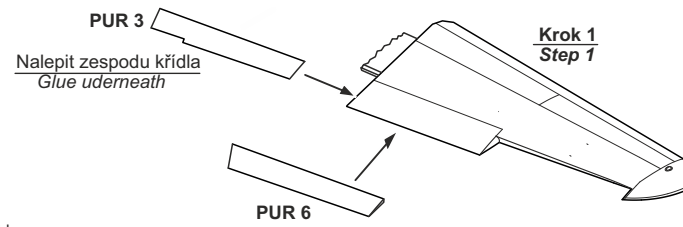
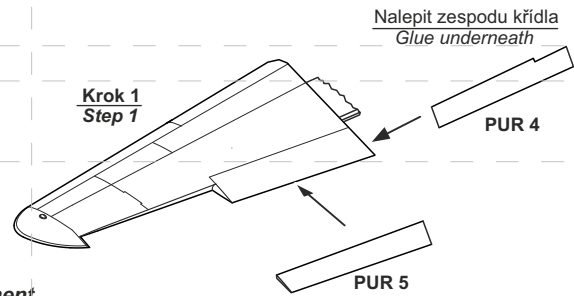
2. Montáž levého křídélka / Left aileron attachment



5. Montáž pravého křídélka / Right aileron attachment



3. Montáž klapek / Attachment of landing flaps



**4. Sestavení vodorovných ocasních ploch
Assembly of tail planes**

