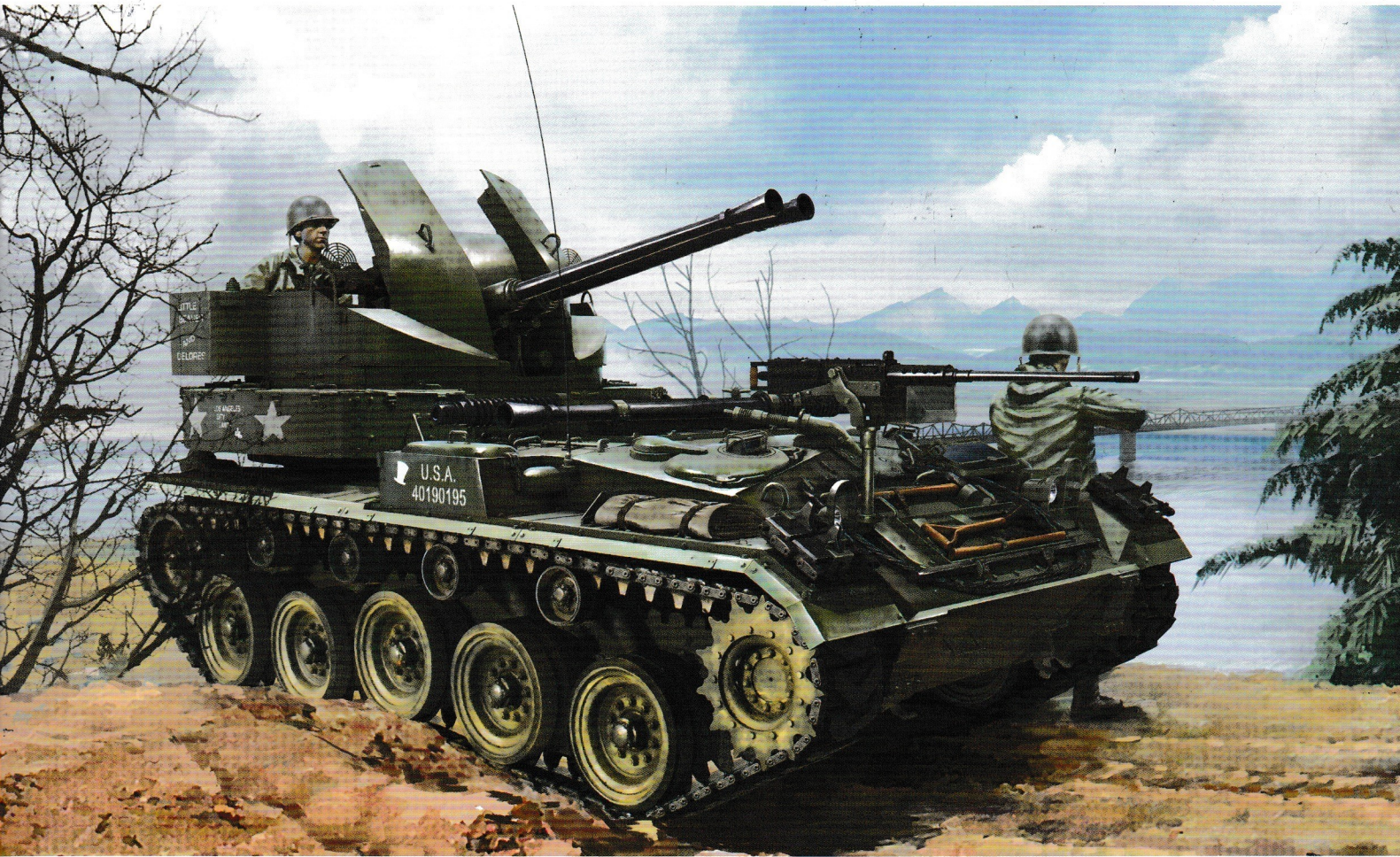


US M19A1 Twin 40mm Gun Mortor Carriage Korean War

M19A1型美军双管40mm自行防空炮朝鲜战场 1/35 SCALE



The M19 Multiple Gun Motor Carriage was based on the M24 Chaffee light tank built by Cadillac and Massey-Harris. It was a light anti-aircraft tank mounting two 40mm Bofors guns in an open top turret. The 40mm Bofors anti-aircraft gun was adopted by the US Army after six British-built guns were trialed in 1941. It was by far the best anti-aircraft gun in its class with a muzzle velocity of 881 m/s and an effective range of over 7,000 meters. The M19 mounted two weapons side by side with 352 rounds of ammunition. It entered service in late-1944 and saw action in the ground role as an infantry support weapon, where it was very effective. As the war ended production was cut to 285 vehicles from the original order of 904 units. The M19 saw action again in the Korean War 1950-53 in the ground role supporting infantry. A small number were exported to the Netherlands army in 1951, and a few to the Japanese Ground Self Defense Force in 1954. The M24 fleet was replaced by the M41 Walker Bulldog light tank in the early 1950's. The M19 was also withdrawn, but the turrets were removed and mounted on the M41 hull to produce the M42 Duster of which 3,700 were eventually built. The M19 had a road speed of 56 km/h and a range of 241 kilometers. In action the M19 was normally served by a crew of six soldiers.

中文

由于美国陆军的机械化程度较高，M-1型高炮(由克莱斯勒公司仿制的瑞典40毫米博福斯高炮)的牵引式机动能力难以满足其要求，美国陆军由此提出需要在其基础上改进出自行高炮。最初的尝试是将M-1型高炮安装于M-3和M-5“斯图亚特”轻型坦克底盘以及大量半履带式车辆上进行测试，但效果均不理想。最终，美国陆军对利用T-24轻型坦克(即M-24“霞飞”轻型坦克试验型号)底盘安装M-1型高炮改进而成的T65E1型40毫米双联试验高炮表示满意。T65E1型被进一步改进并定型为M-19型40毫米自行高炮。M-19型自行高炮安装有双联装40毫米M-1型高炮，炮架为敞开式结构，仅在高炮前部两侧安装有防盾。乘员6人，战斗全重16.8吨。装甲厚度12.7~19毫米，最大速度56千米/时，发动机功率220马力。与M-24相比，M-19的底盘结构有所变动，主要是发动机和传动机构被前置，从而为后部底盘留出足够空间安装M-1型高炮的炮架及旋转部件。整个高炮的旋转与升降均采用电力驱动，高炮最大仰角为85度。由于战争结束，M-19型40毫米自行高炮生产由原来的904台的订单被削减到285辆，被美国陆军广泛地应用于二战后期及朝鲜战争。在很多情况下，M-19除了执行防空任务外，还常常利用强大的火力压制敌方地面目标，为己方部队提供有力的火力支持。1951年荷兰陆军，以及1954年日本陆上自卫队分别采购了少量M19自走炮。1950年代早期，M41“华克斗牛犬”轻型坦克取代M24。M19自然也就撤出现役，但是炮塔被拆除并安装在M41车体上以生产M42“清道夫”其最终建造了3700辆。

ILLUSTRATION 图示说明：

CORRECT METHOD FOR APPLYING DECALS :

正确使用水贴纸的方法：

1. Clean model parts surface with wet cloth.
将需要贴水贴纸之部位表面擦干净。
2. Cut out the decal parts and dip them in cold water for 15 ~20 seconds.
将所需之贴纸剪下泡在清水里约15至20秒。
3. Place it on correct position of the model kit.
将湿透之贴纸取出置放于正确之位置旁。
4. Slide off the decal from the base paper on to the model kit surface with a cotton stick.
用棉花棒轻推贴纸表面使其从底纸滑出至模型表面之正确位置。
5. When decal get dry then complete.
待其自然干透后即完成。

ICON INSTUCTION: 图标说明：



Open Hole
钻孔



Remove
切除



Make 2 pics
同样的制作二组



Bend
曲折



Optional
可以选择采用



Apply Decal
贴水贴纸



Instant Glue For Metal
瞬间接着剂,金属用



Fill Hole
把孔填平



Do not cement
不用粘合

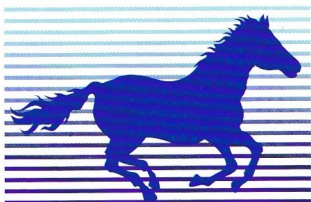
COLOR SUGGESTION: 涂装指引：

Color 涂料表		Hobby Color	MR. Hobby	Humbrol	Tamiya
Steel	黑铁色	H-18	C-28	53	/
Wood Brown	木棕色	H-27	C-43	/	/
Clear Bule	透明蓝	H-29	C-50	/	X-23
Olive drab	橄榄绿	H-78	C-38	66	XF-62
Sliver	银色	H-8	C-8	11	X-11
Khaki	卡其色	H-81	C-55	26	XF-49
Copper	铜色	H-10	C-10	12	XF-6
Rust	铁锈色	H-344	/	/	/
Black	黑色	H-2	C-2	21	X-1
Dark Green	深绿色	H-330	C-330	116	XF-81
Nato Sand	北约沙色	H-79	C-39	187	XF-55
Field Drab	浅褐色	H-81	C-55	29	XF-49

READ BEFORE ASSEMBLING: 组装必读：

- Carefully Study instruction before assembling. 组装前请阅读清楚制作指引。
- Keep plastic model glue and tools away from children. 胶水,油漆及工具勿让小孩接触。
- Do not use cement or paint near open flame or sparks. 胶水及油漆勿接触火种。
- Do not work in closed room. 勿在密封地方制作模型。

Printed in China



BRONCO

Bronco Models

Copyright © 2018

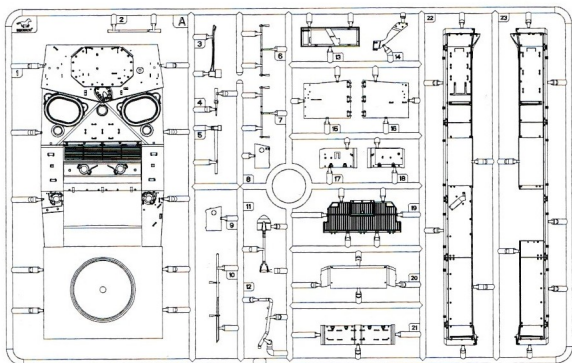
Made in China

中国制造

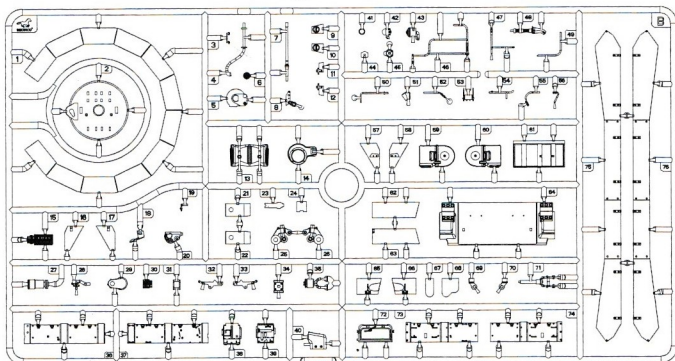
No use parts
不要部件



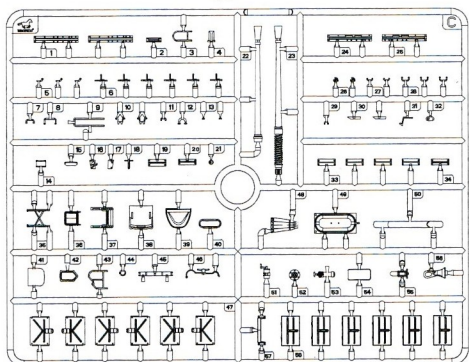
(A) x1



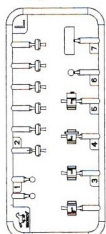
(B) x1



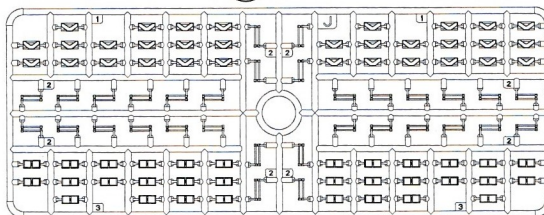
(C) x2



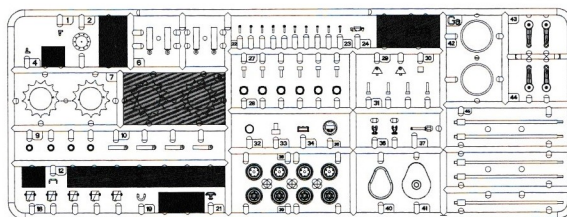
(L) x1



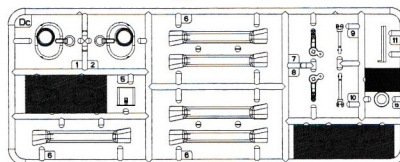
(J) x6



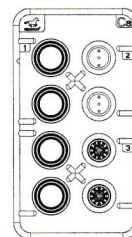
(Ga) x2



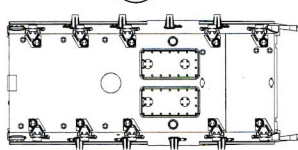
(Dc) x1



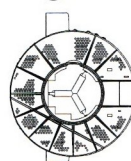
(Ca) x5



(E) x1



(F) x1



(W) x1



(N) x14



(K) x2



(I) x2



细绳
Thread

(P) x1

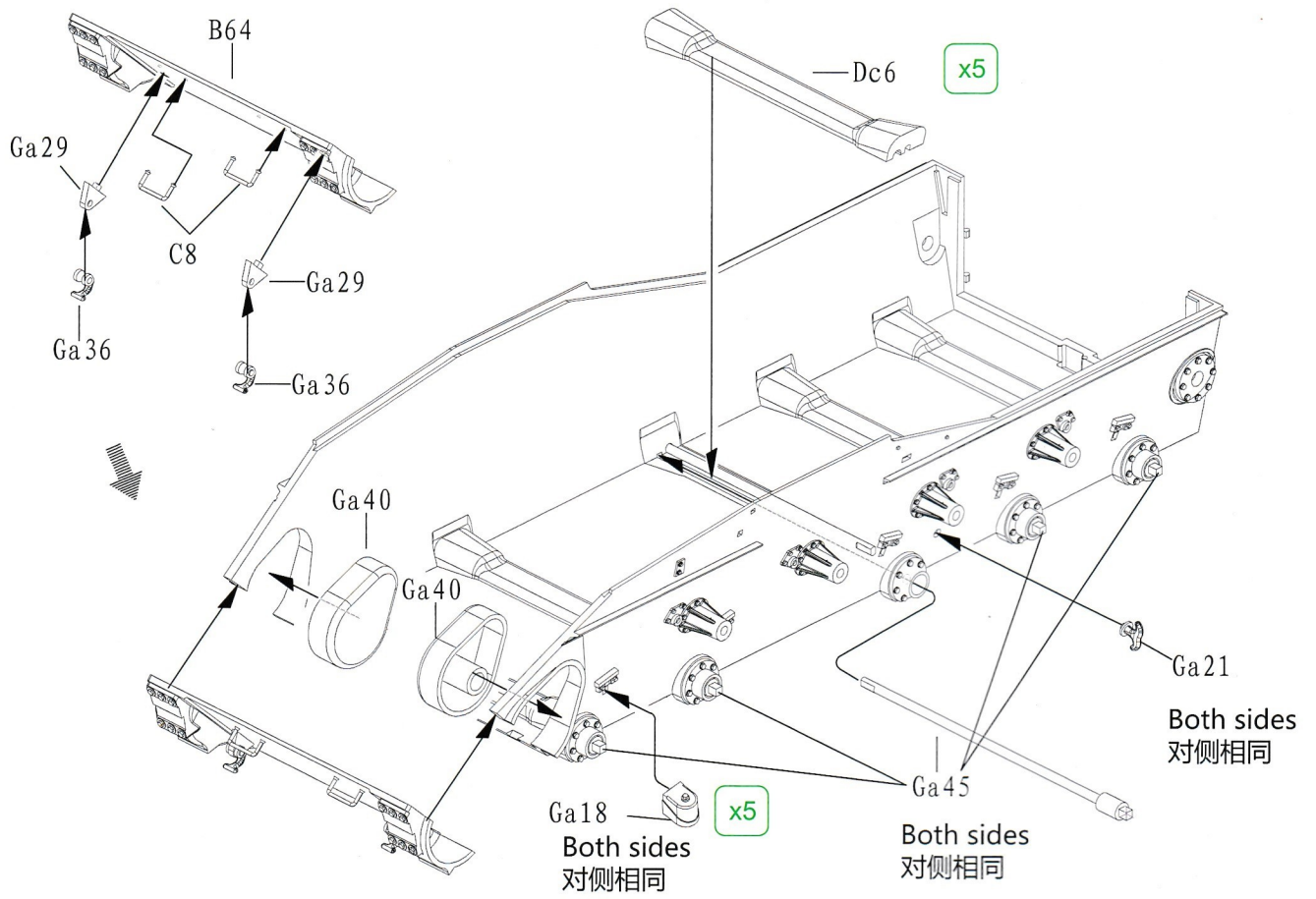


DECAL x1



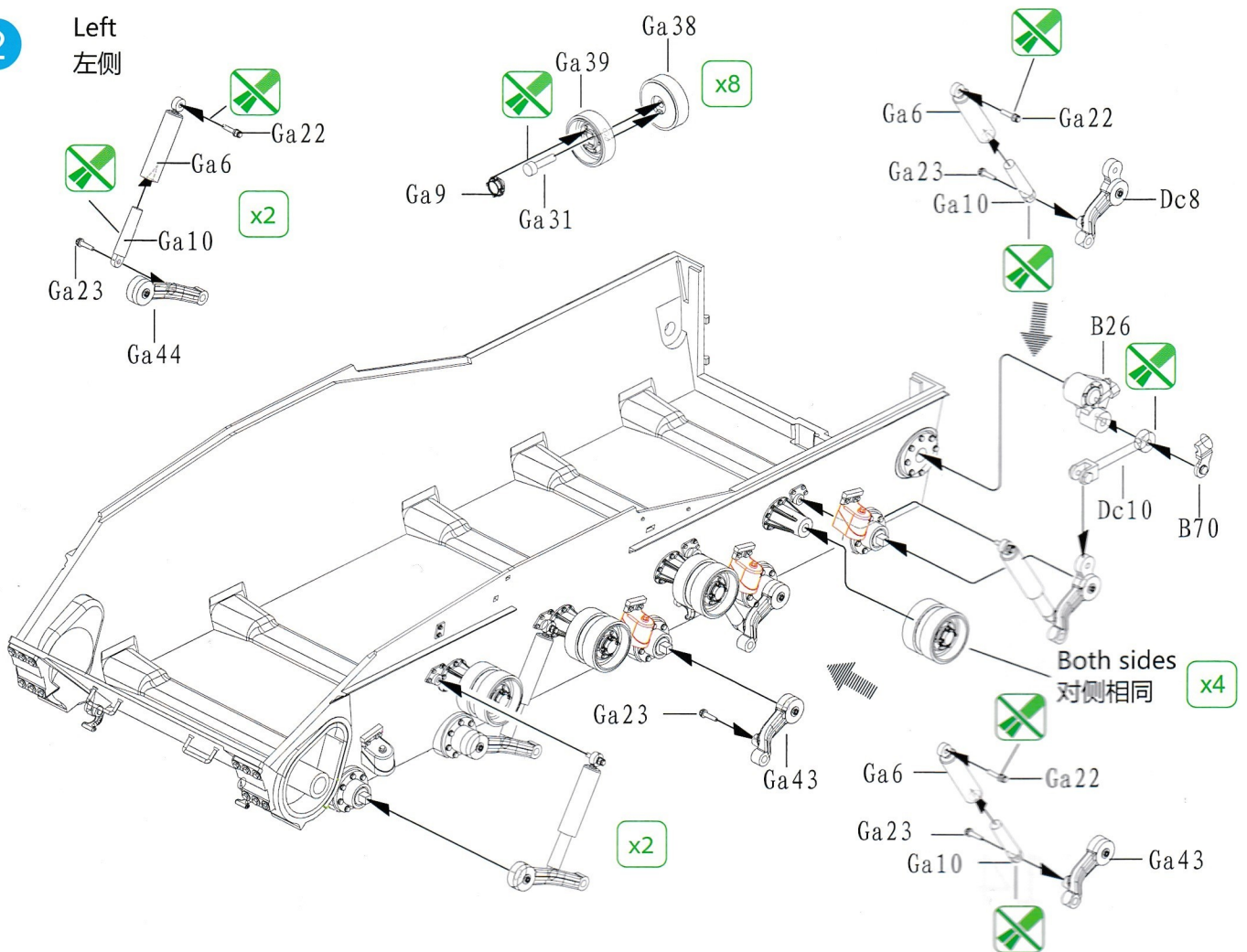
CB35148

1

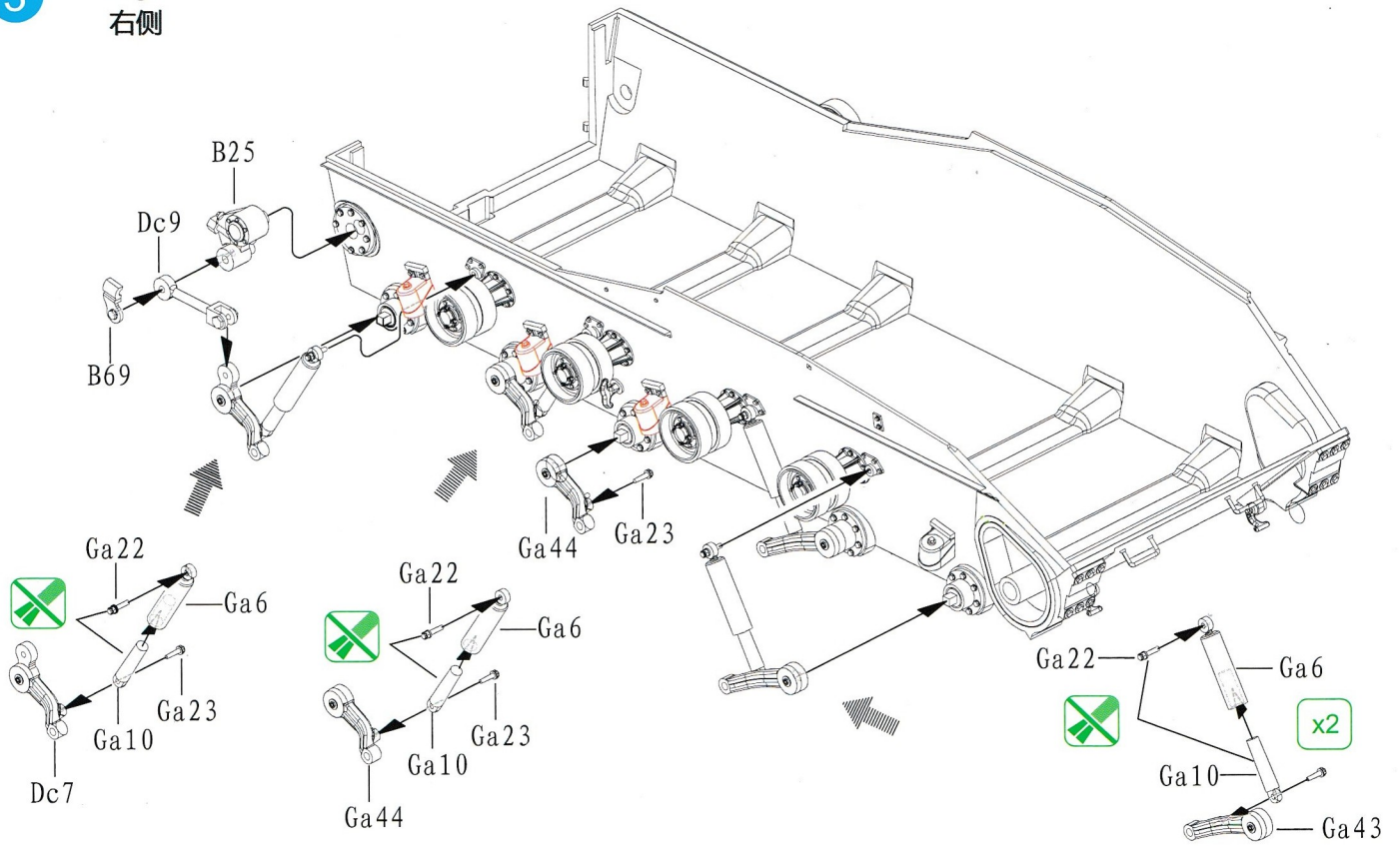


2

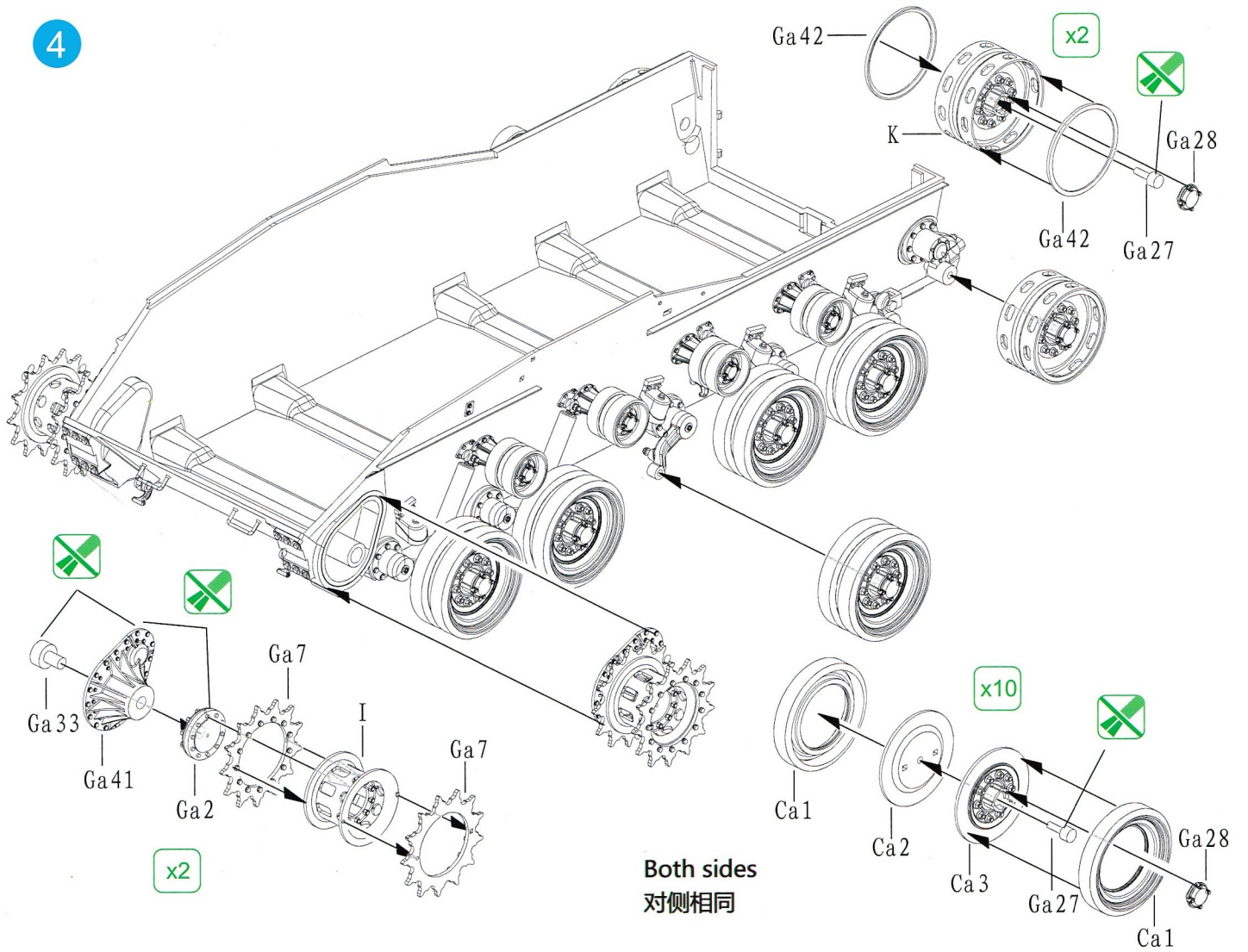
Left
左侧



3 Right
右侧



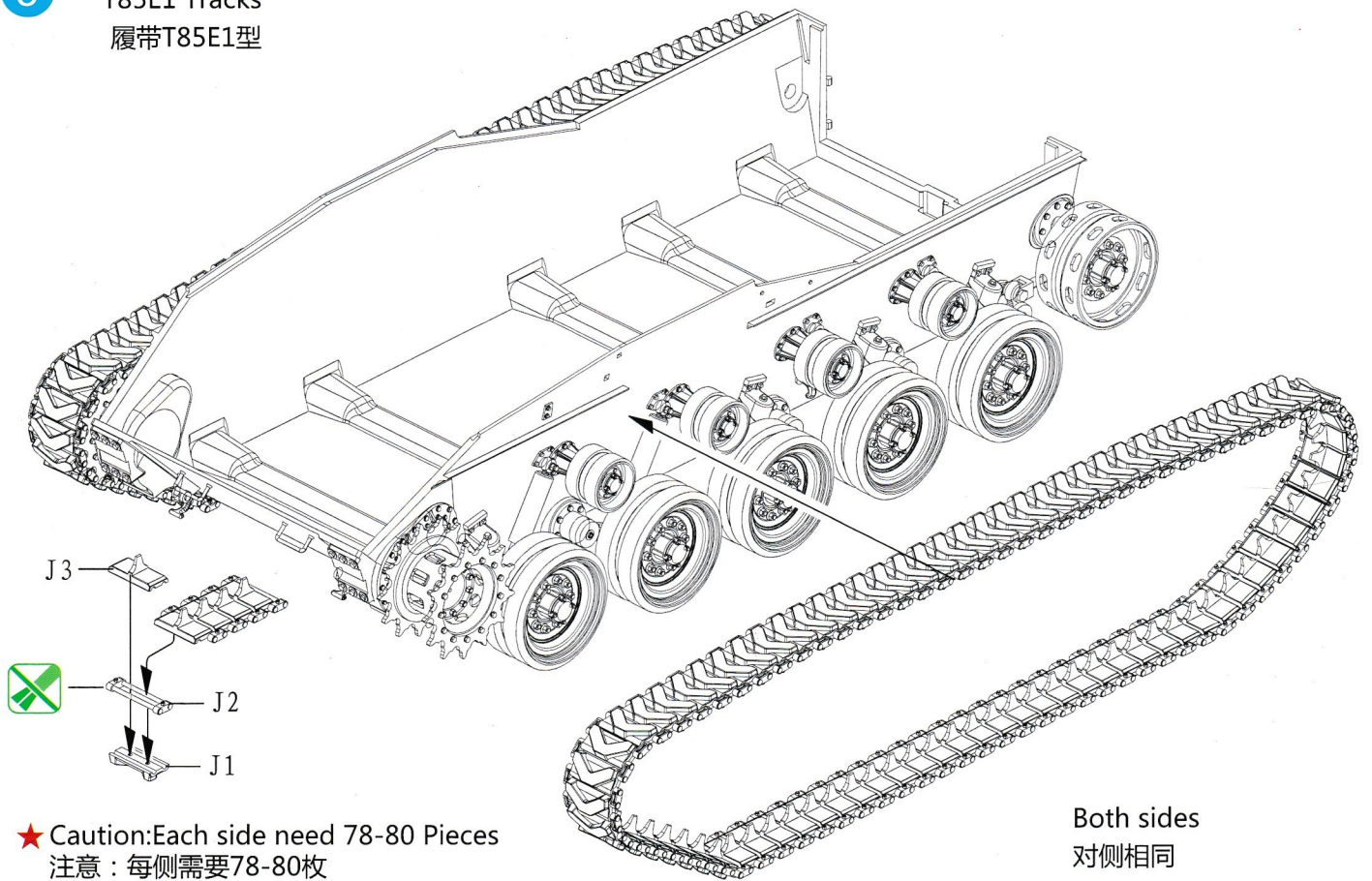
4



Both sides
对侧相同

5

T85E1 Tracks
履带T85E1型



6

T72 Tracks
T72型履带

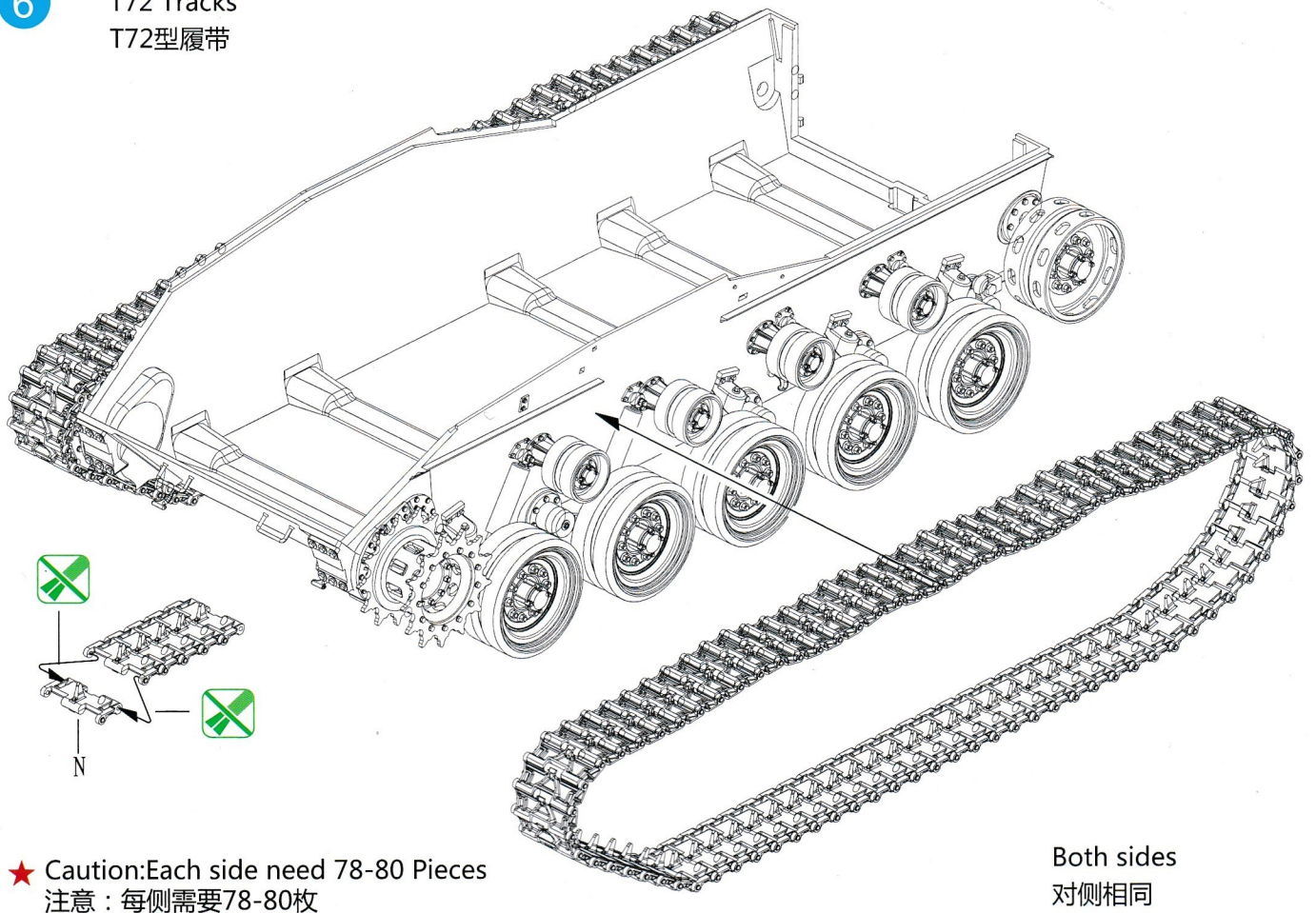
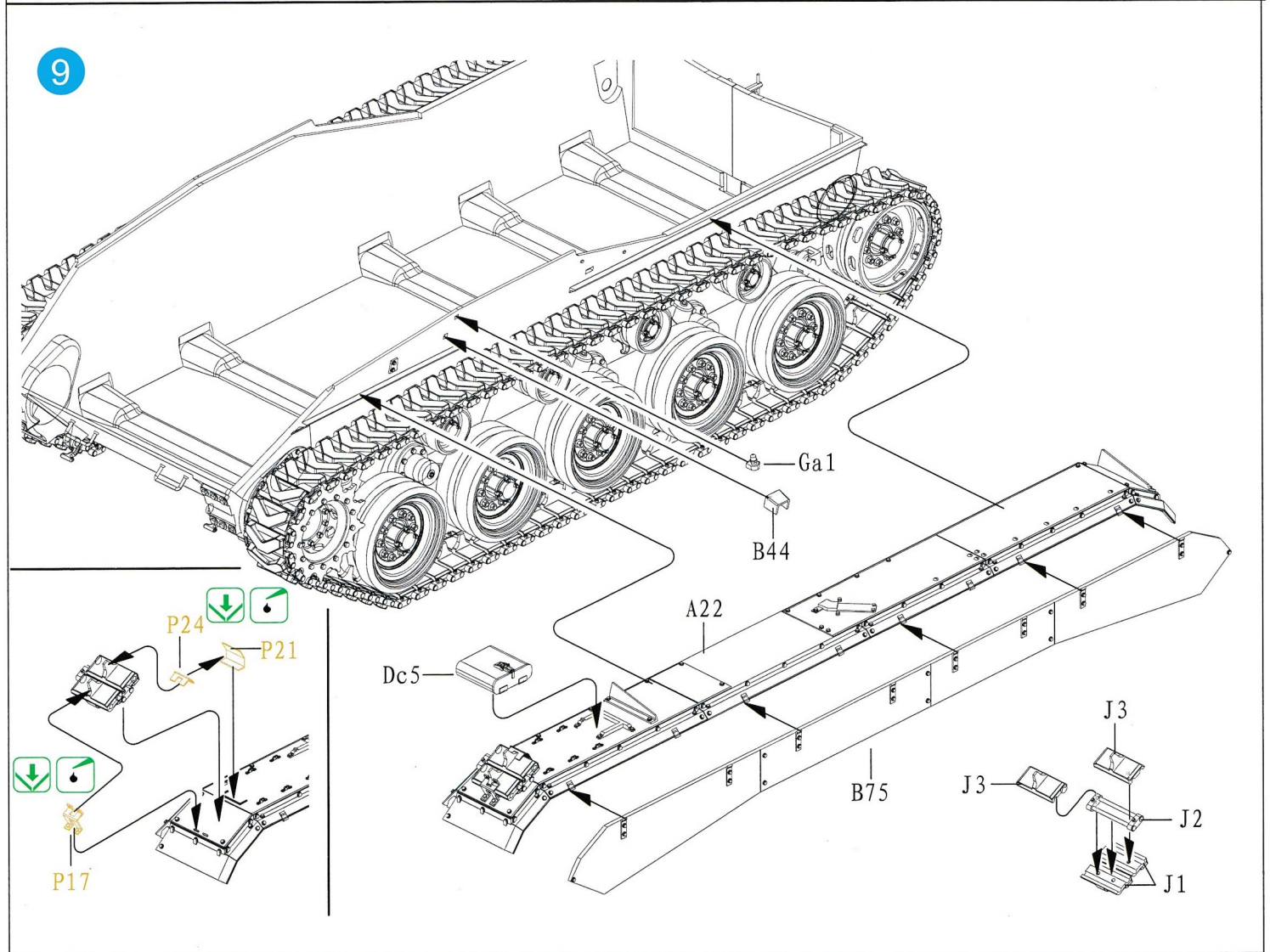
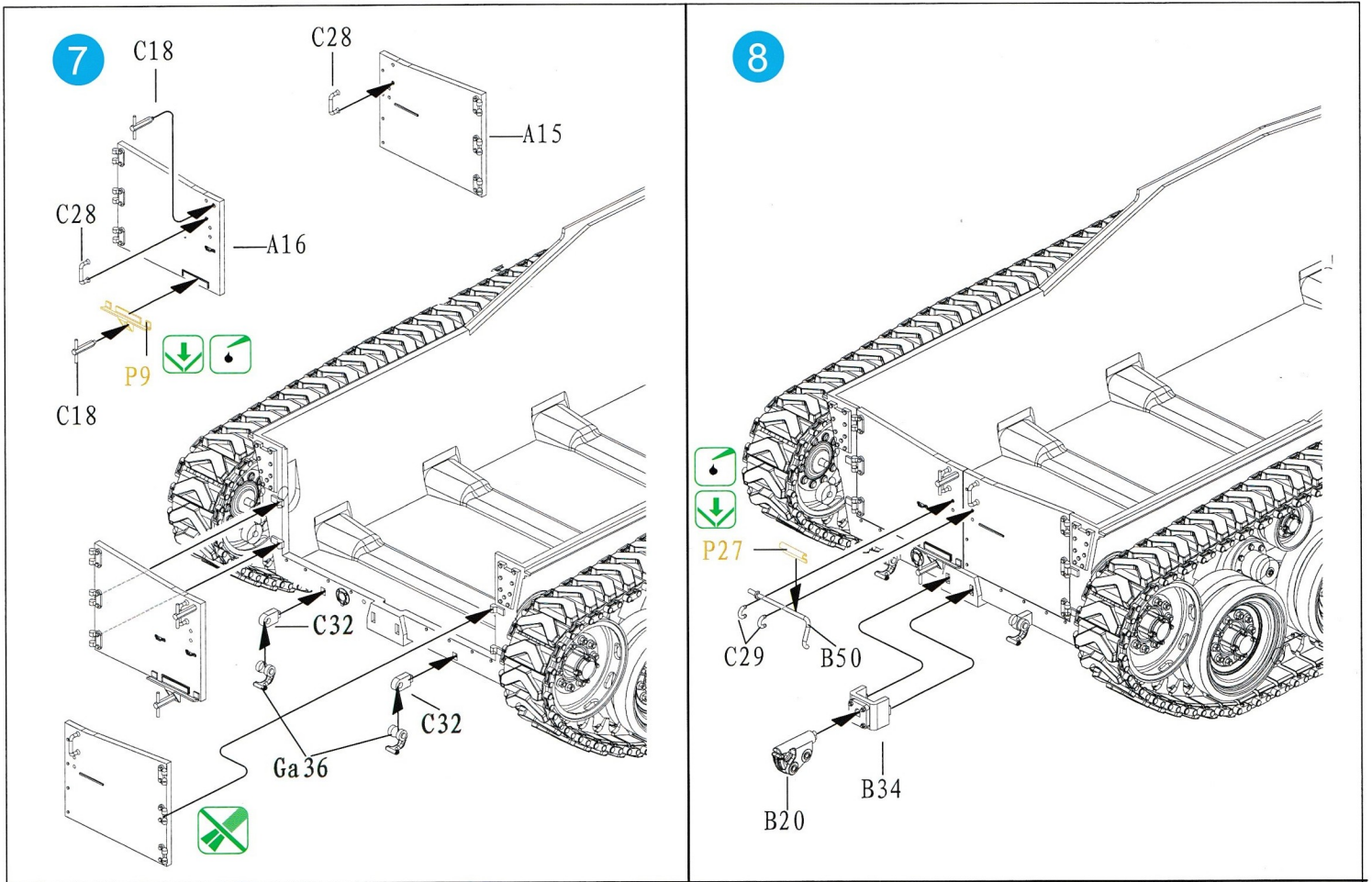


ILLUSTRATION 图示说明：



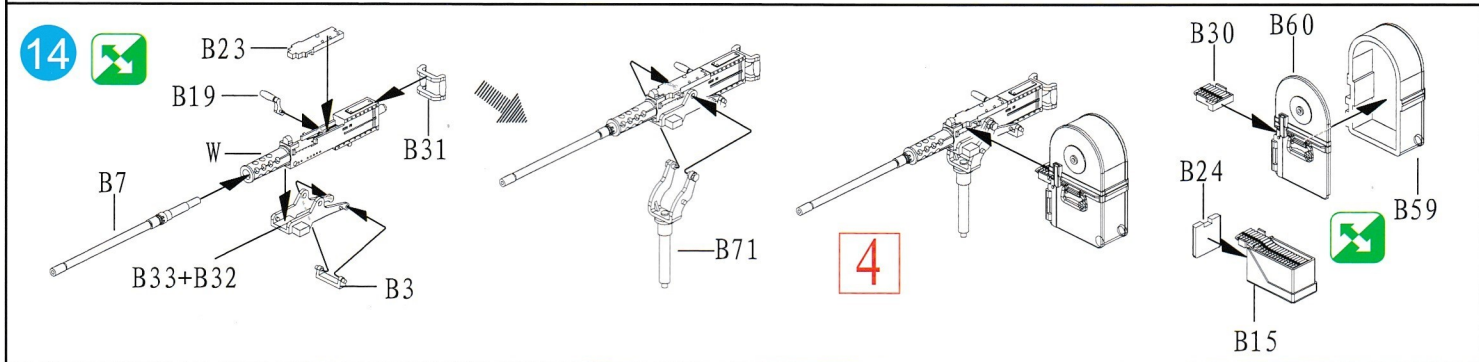
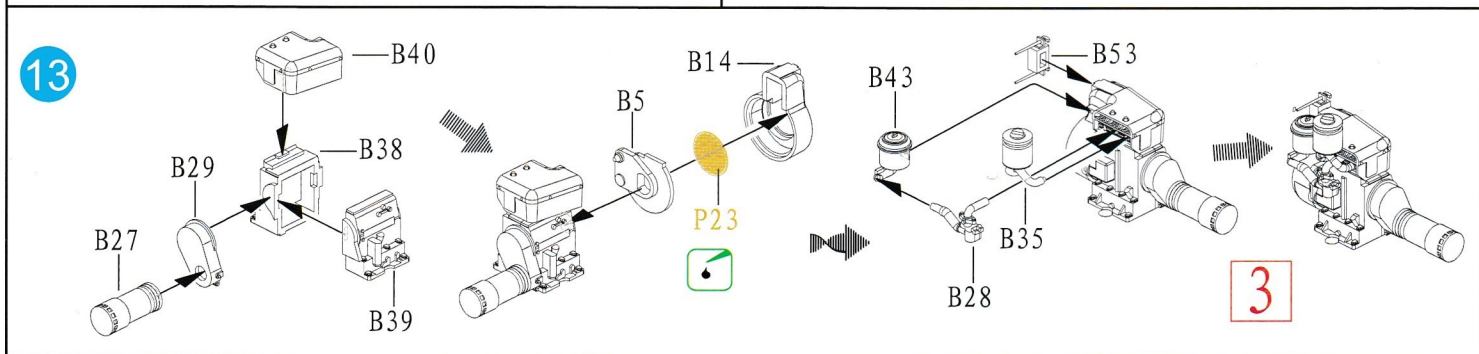
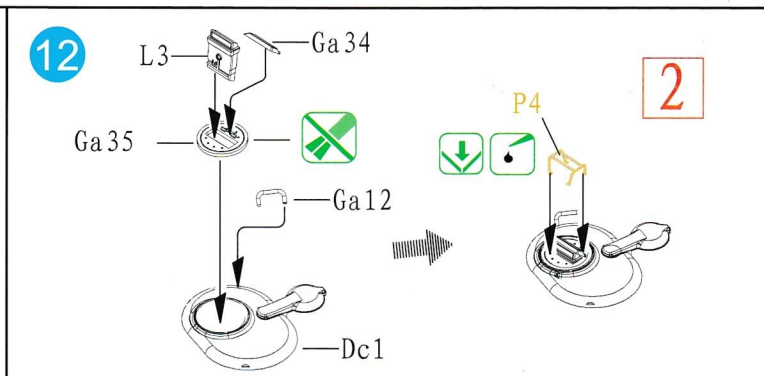
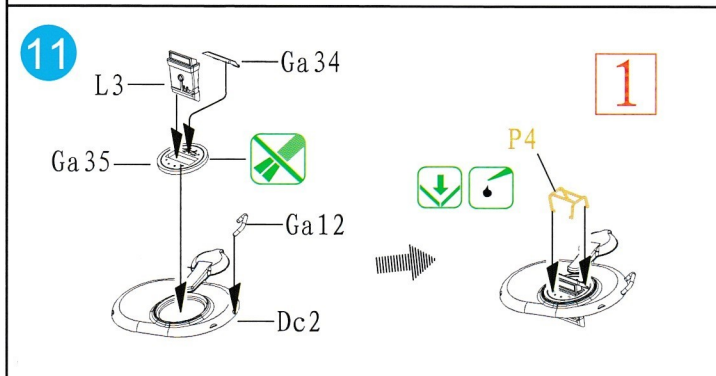
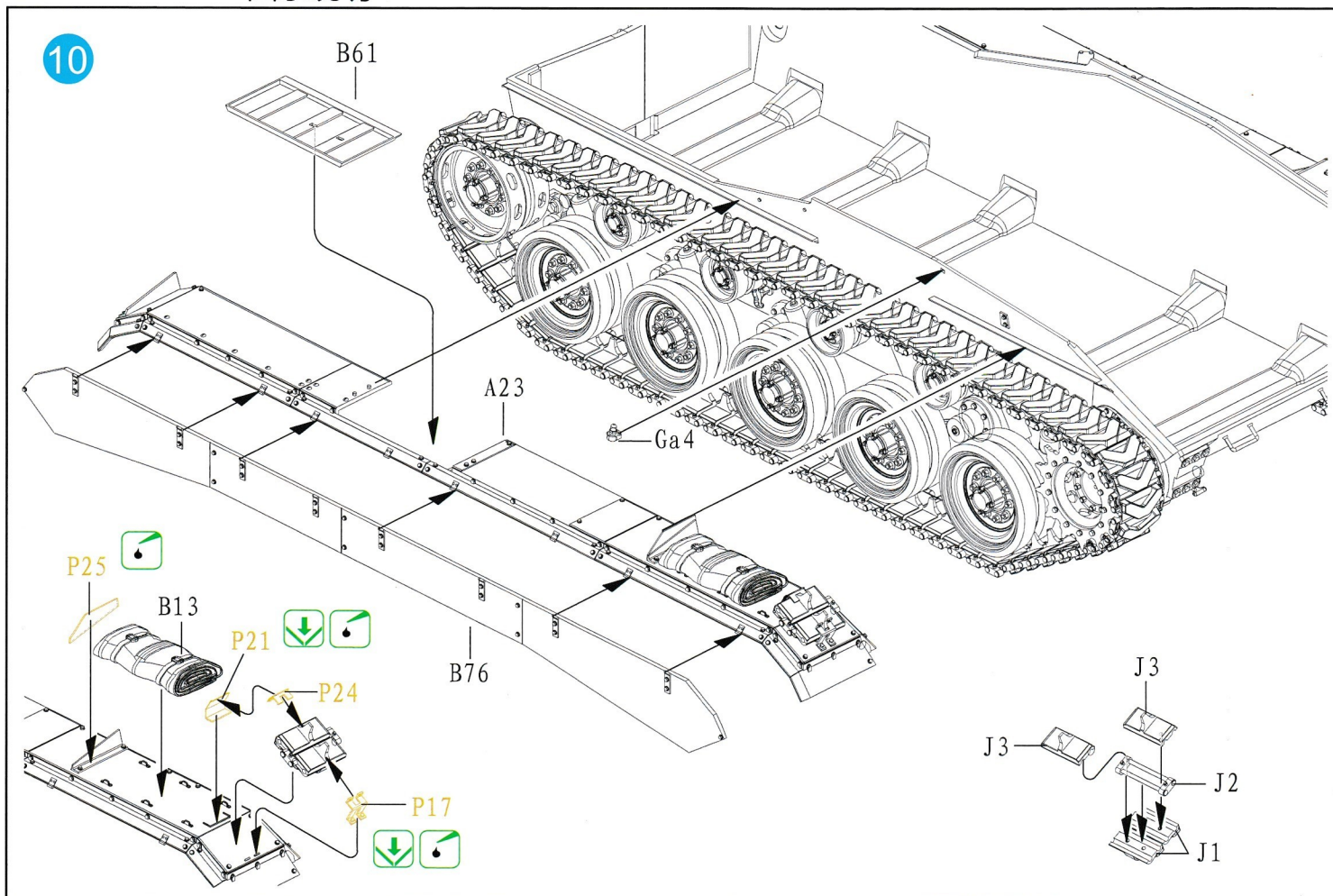


ILLUSTRATION 图示说明：

15

B67, P11, C3, C30, P12

5

16

B68, P8, P33, P32, P36, C31, C30, C43

6

17

A4, P16, P29, A3, A11, P20, A13, A2

7

18

B48, Ga24, L1, Ga37, B45, DC13, Ga32, Ga37, Ga24, L1, B6, B42, Thread, B41, Ga19

Both sides
对侧相同

19

C5, C7, Ga19, C5, C7, L7, B8, B72, P30, Dc11

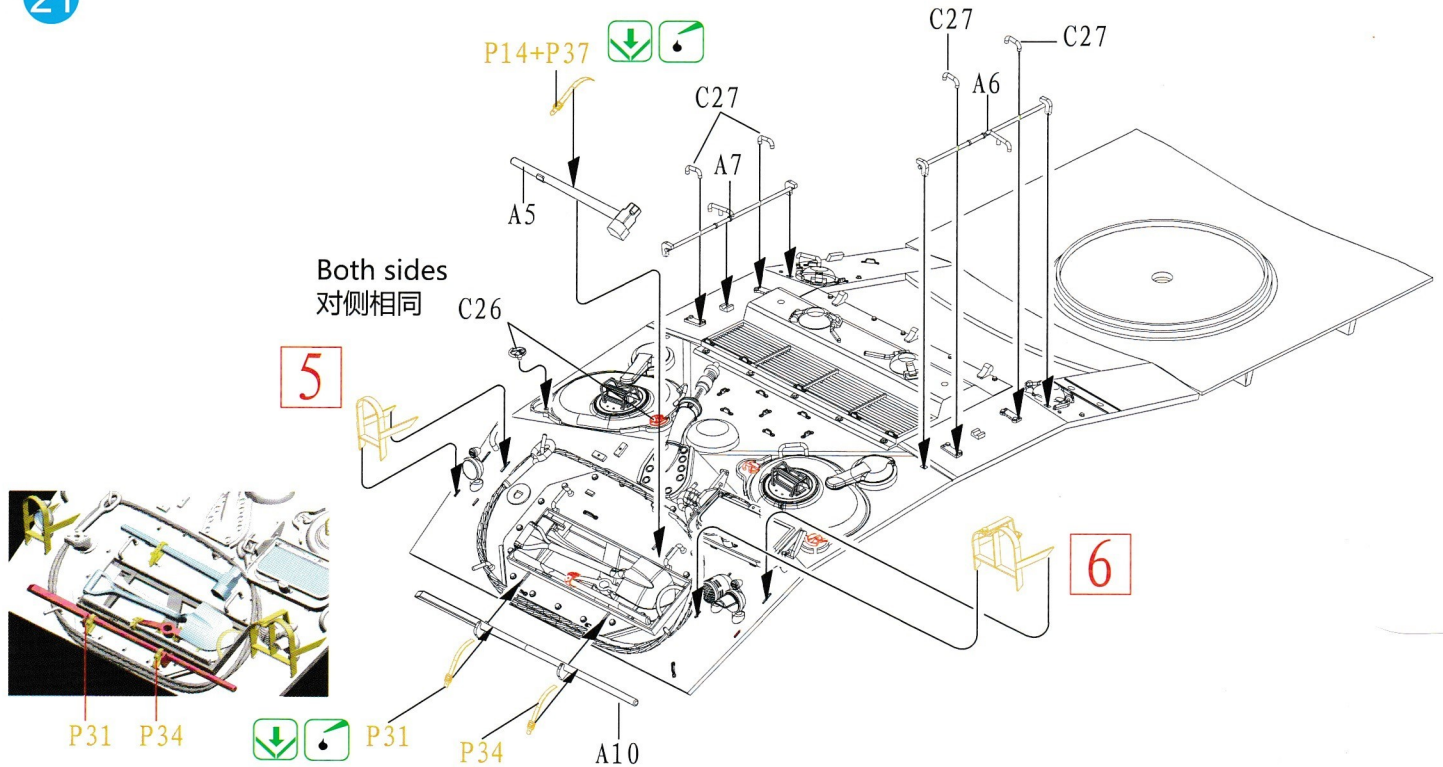
Open position
打开状态

20

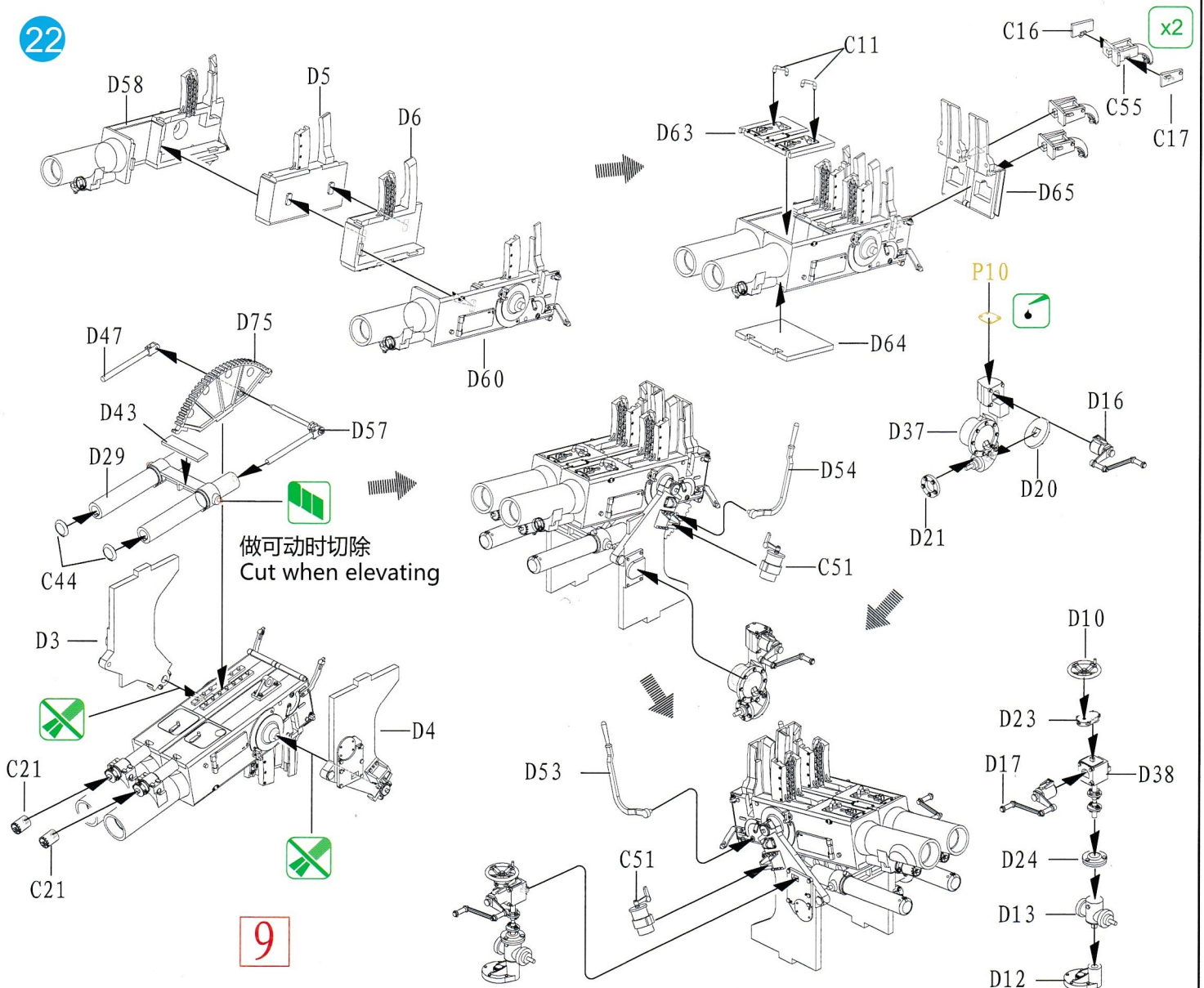
C46, C23, C45, C45

8

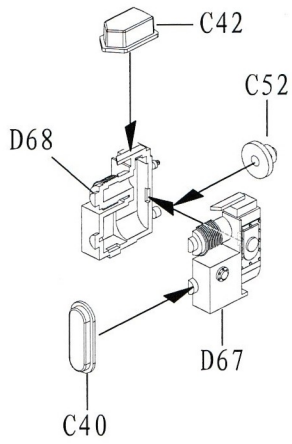
21



22

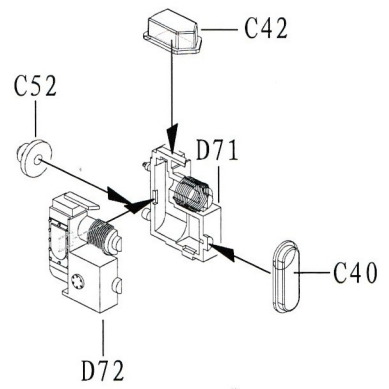


23



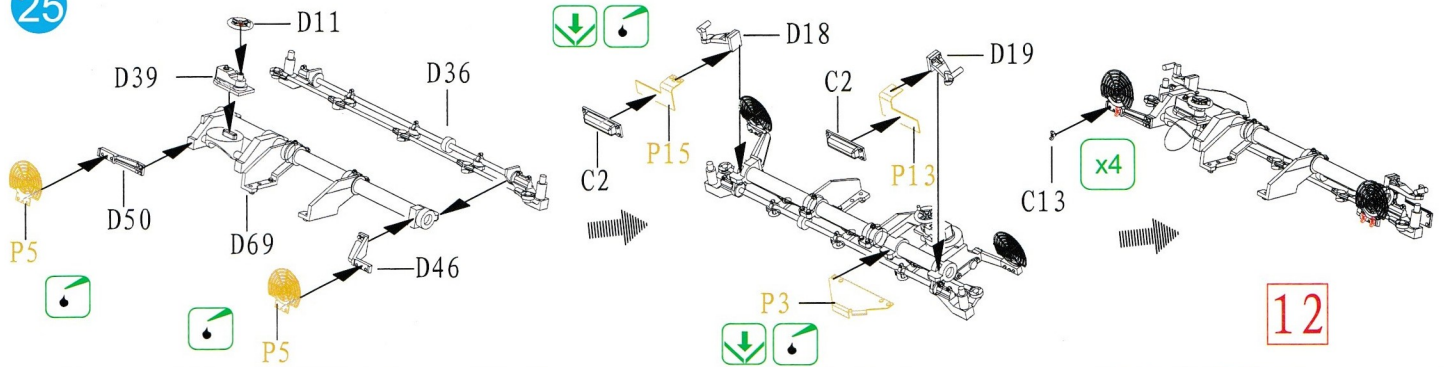
10

24



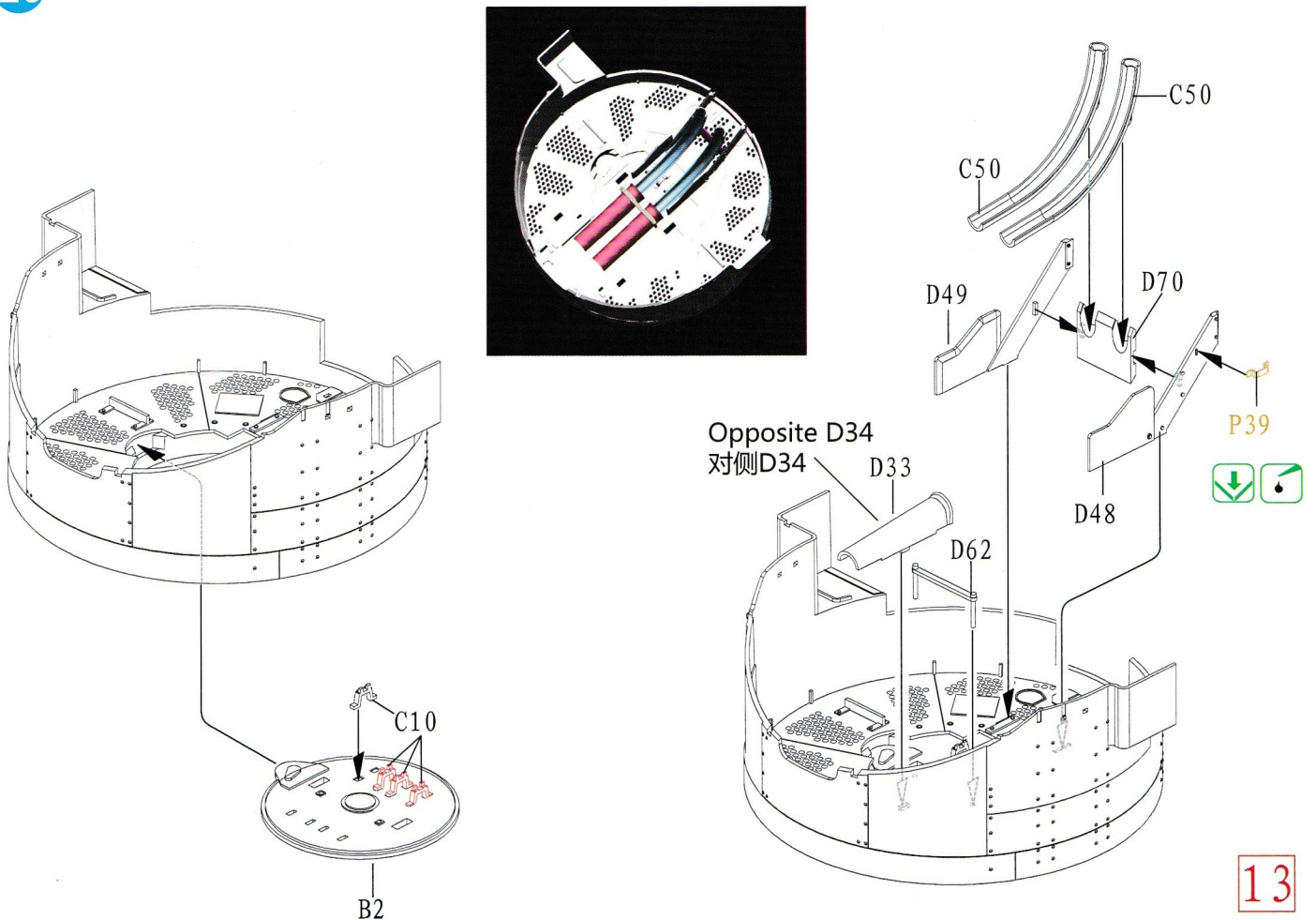
11

25

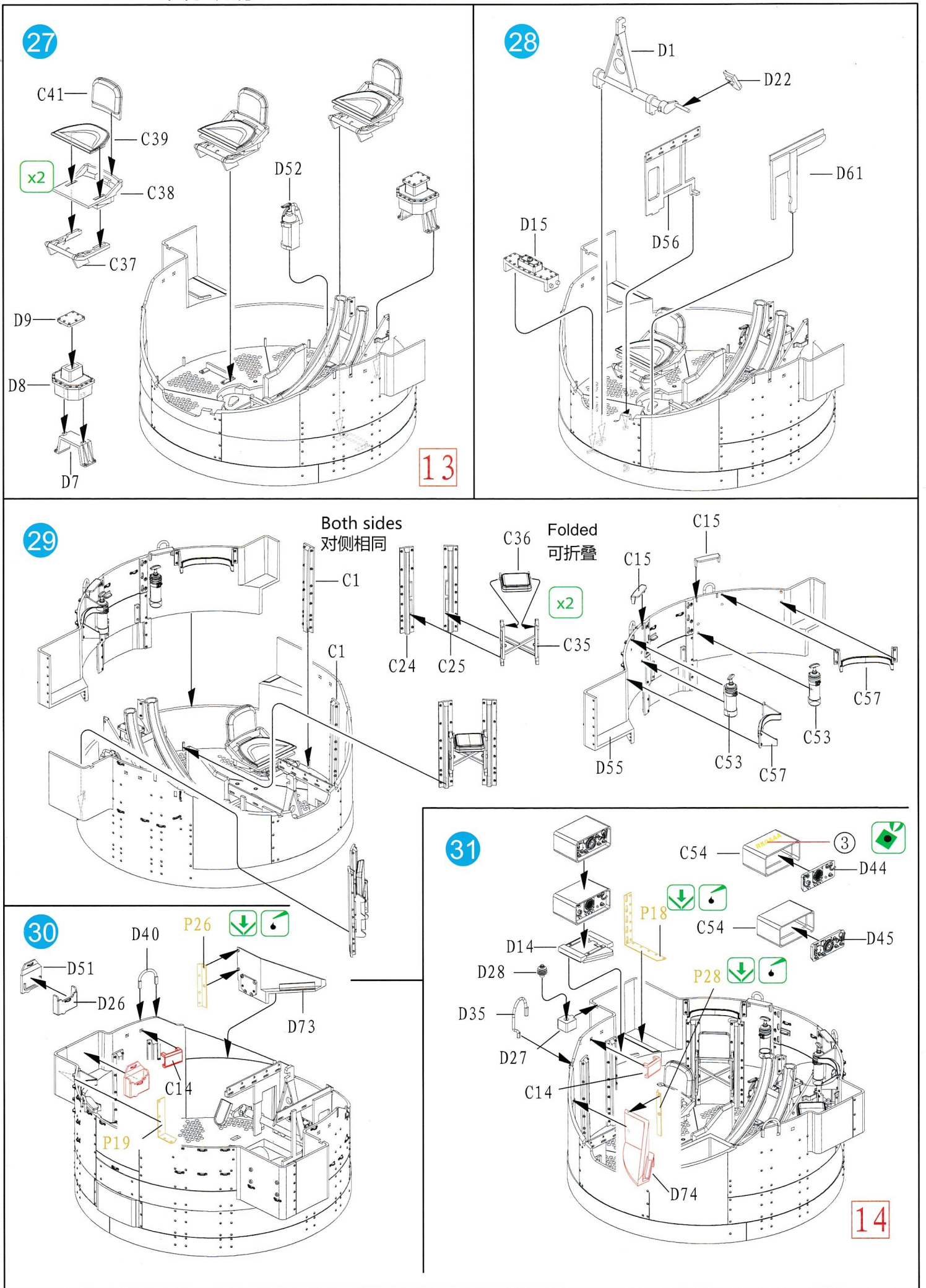


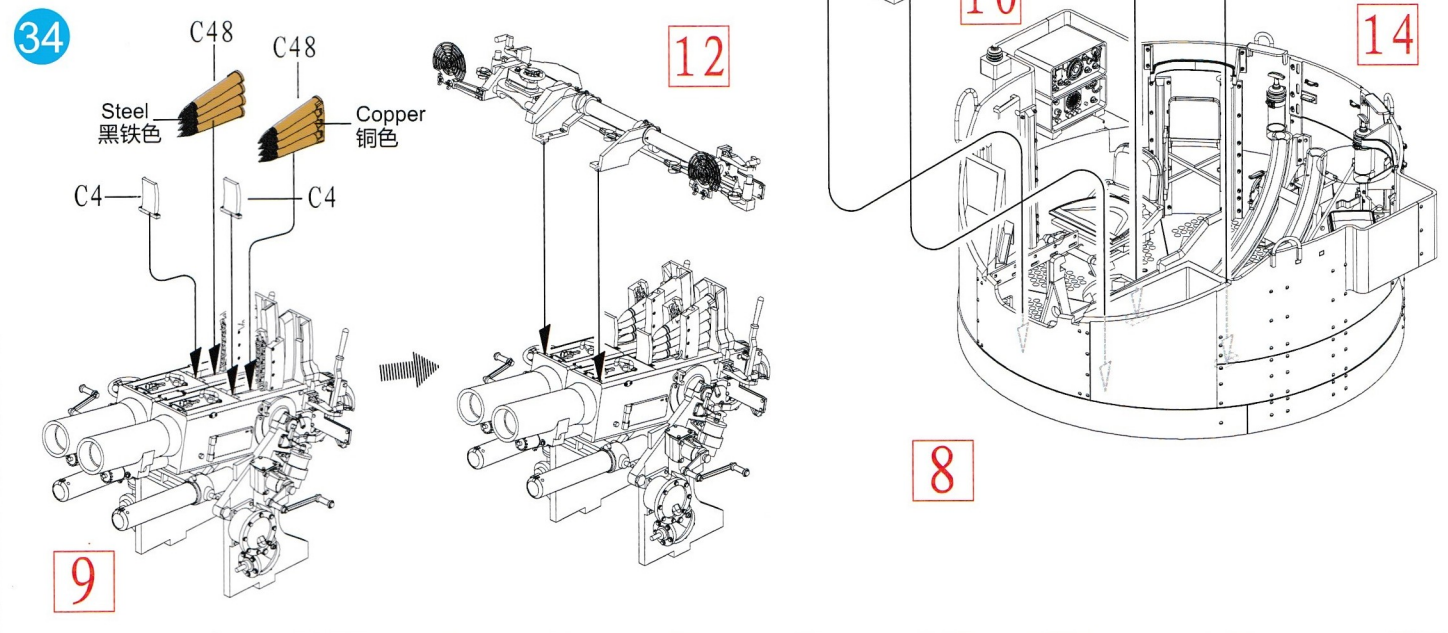
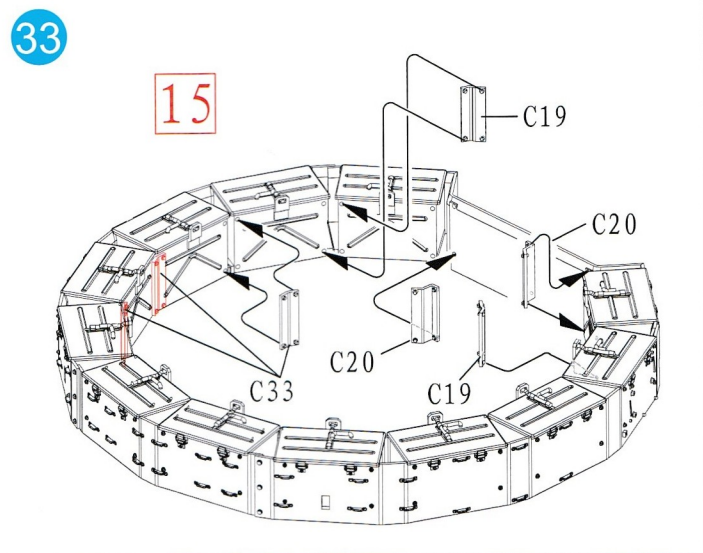
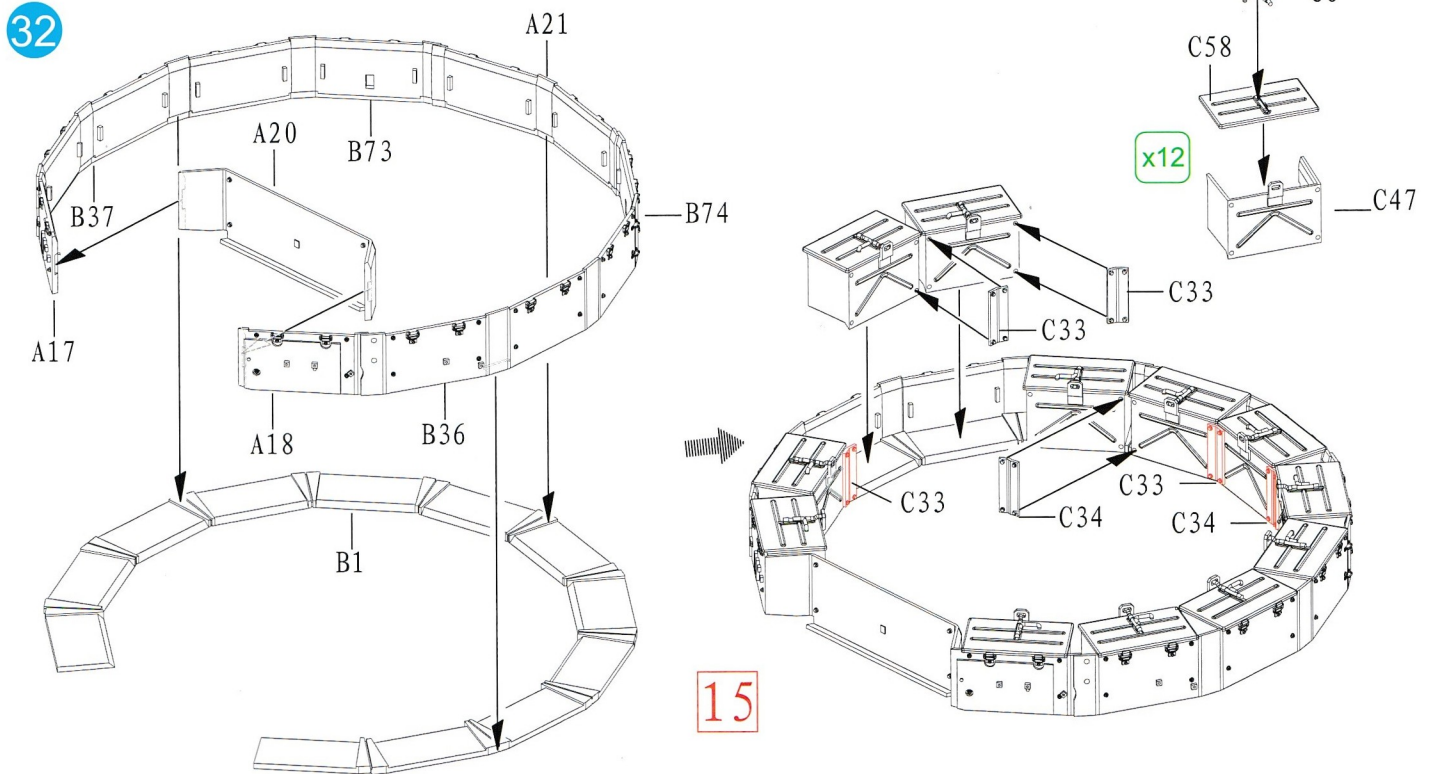
12

26

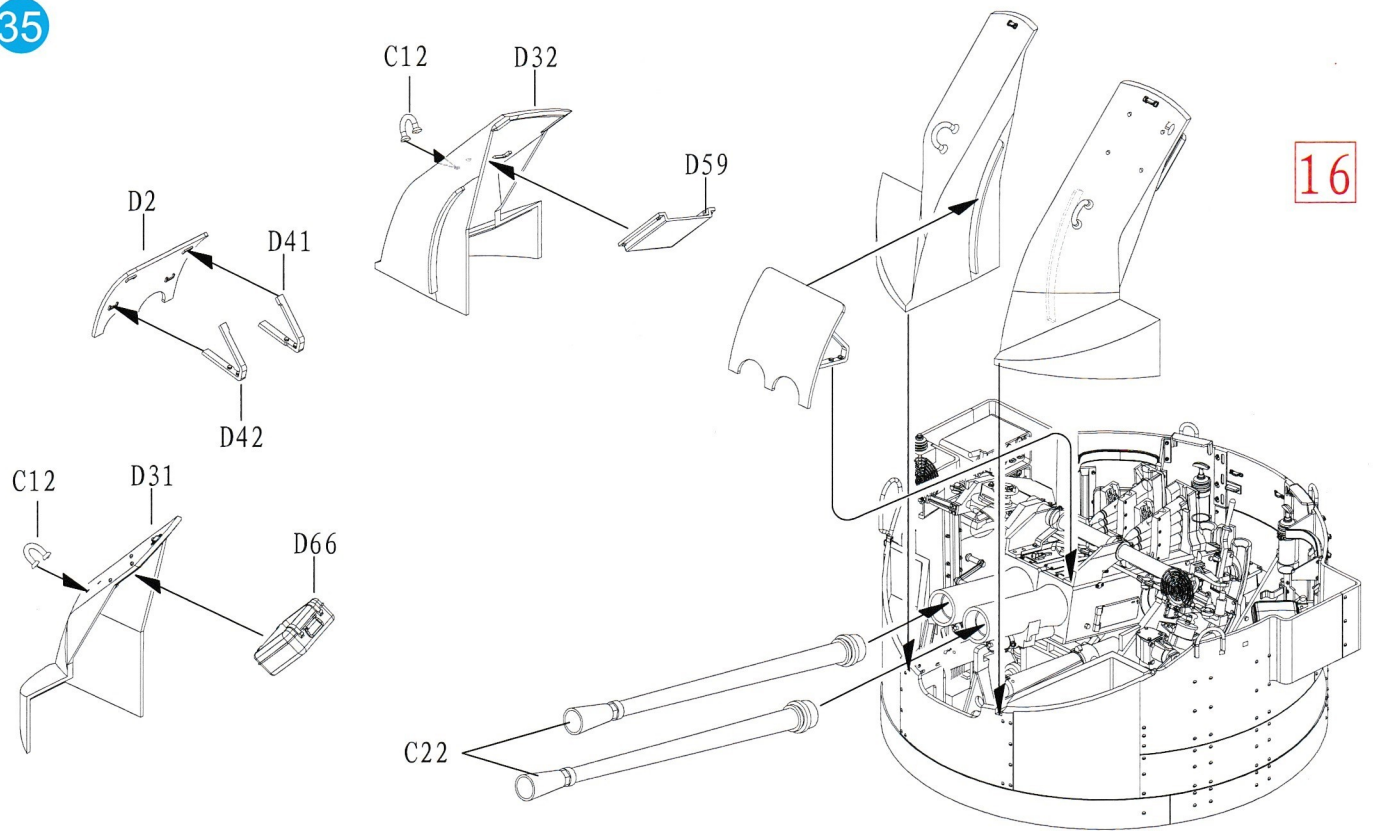


13

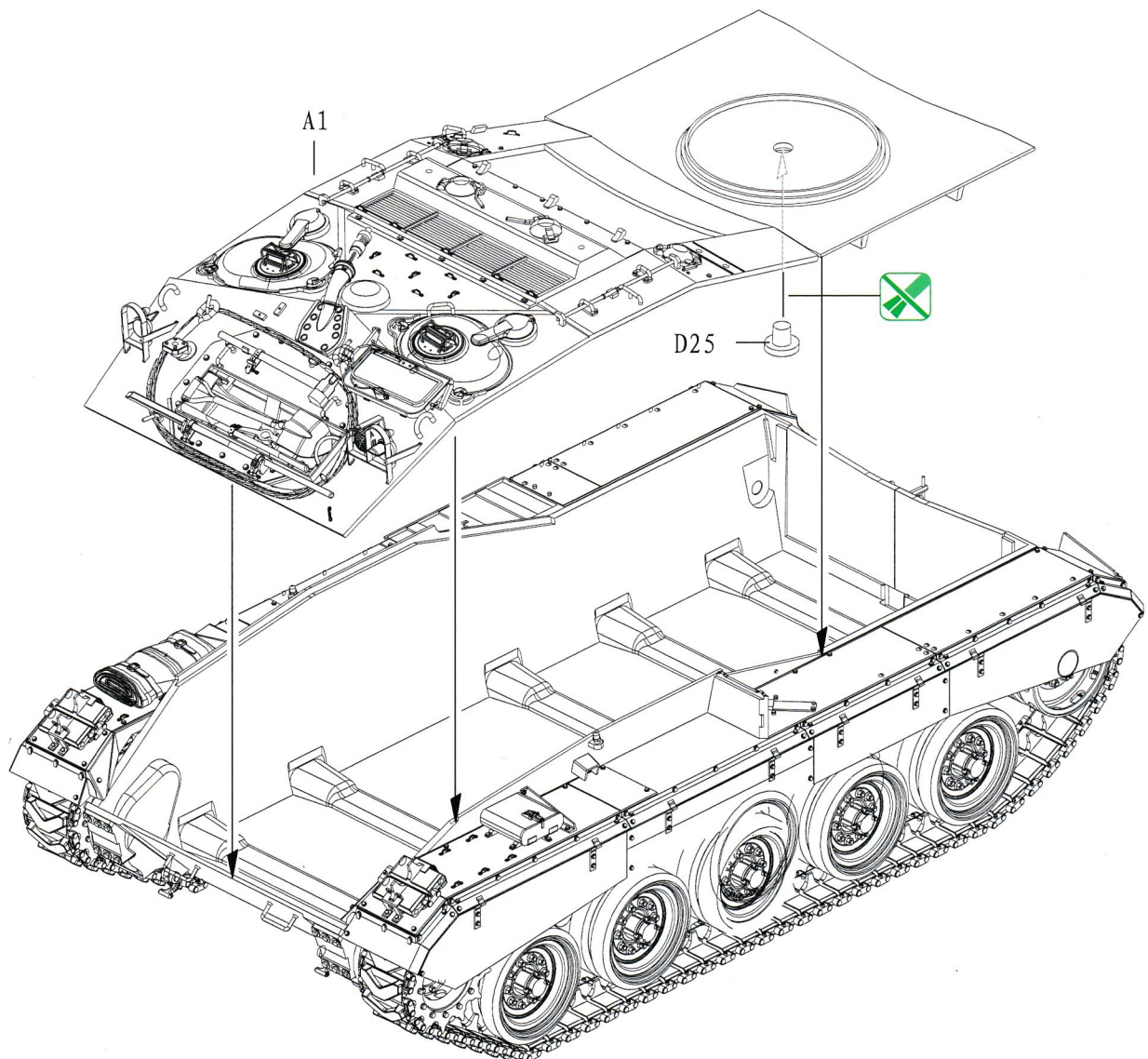


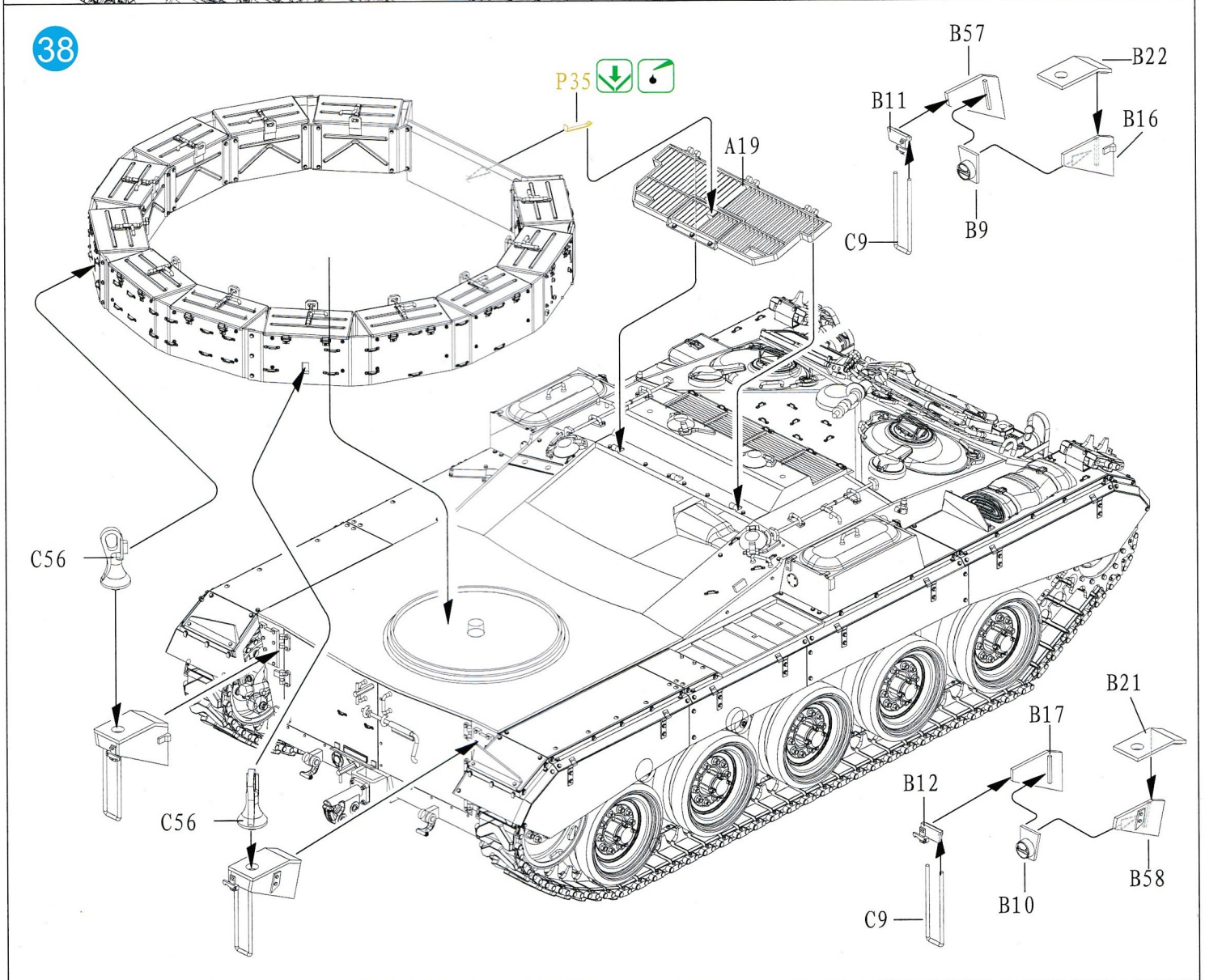
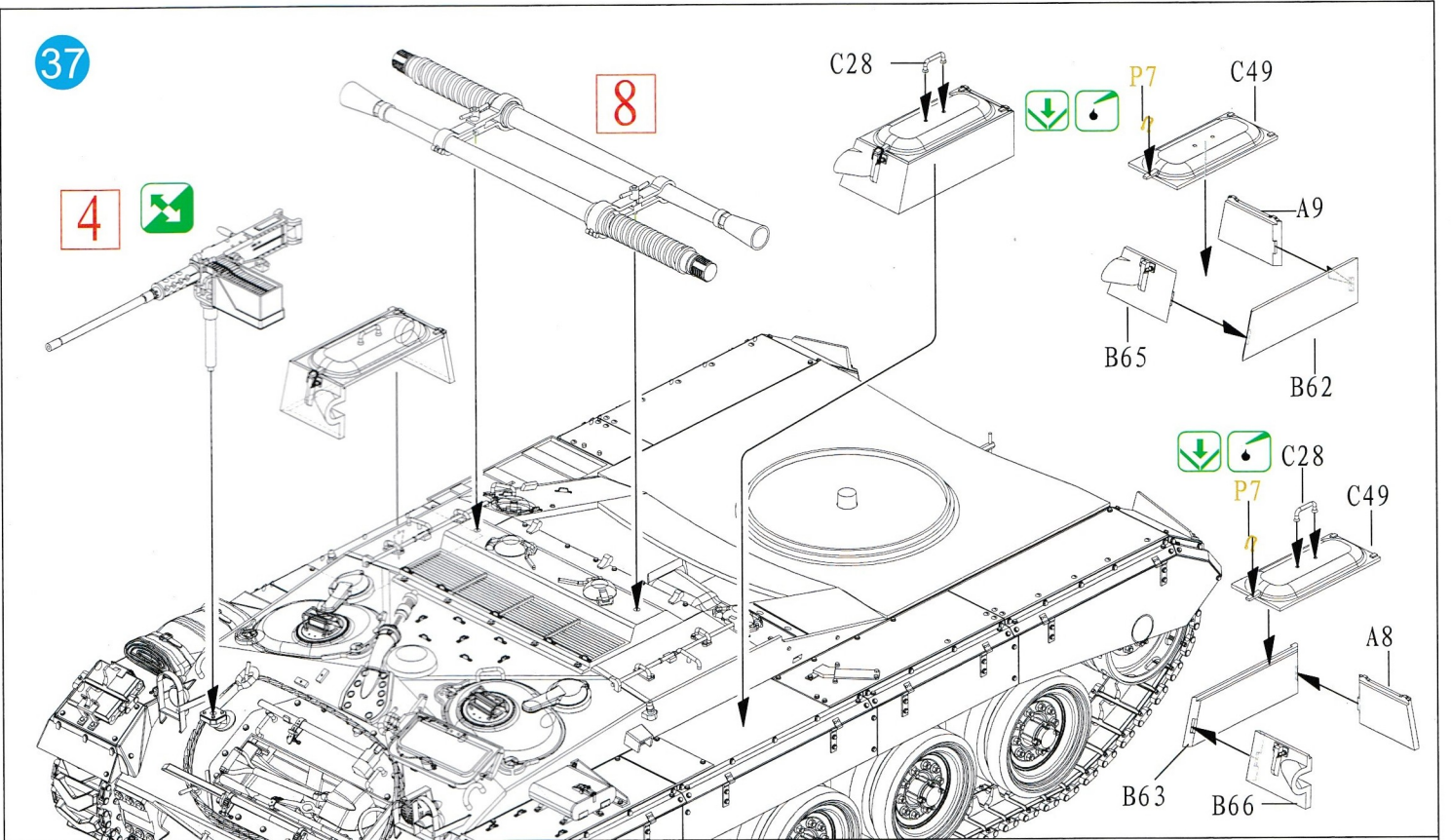


35

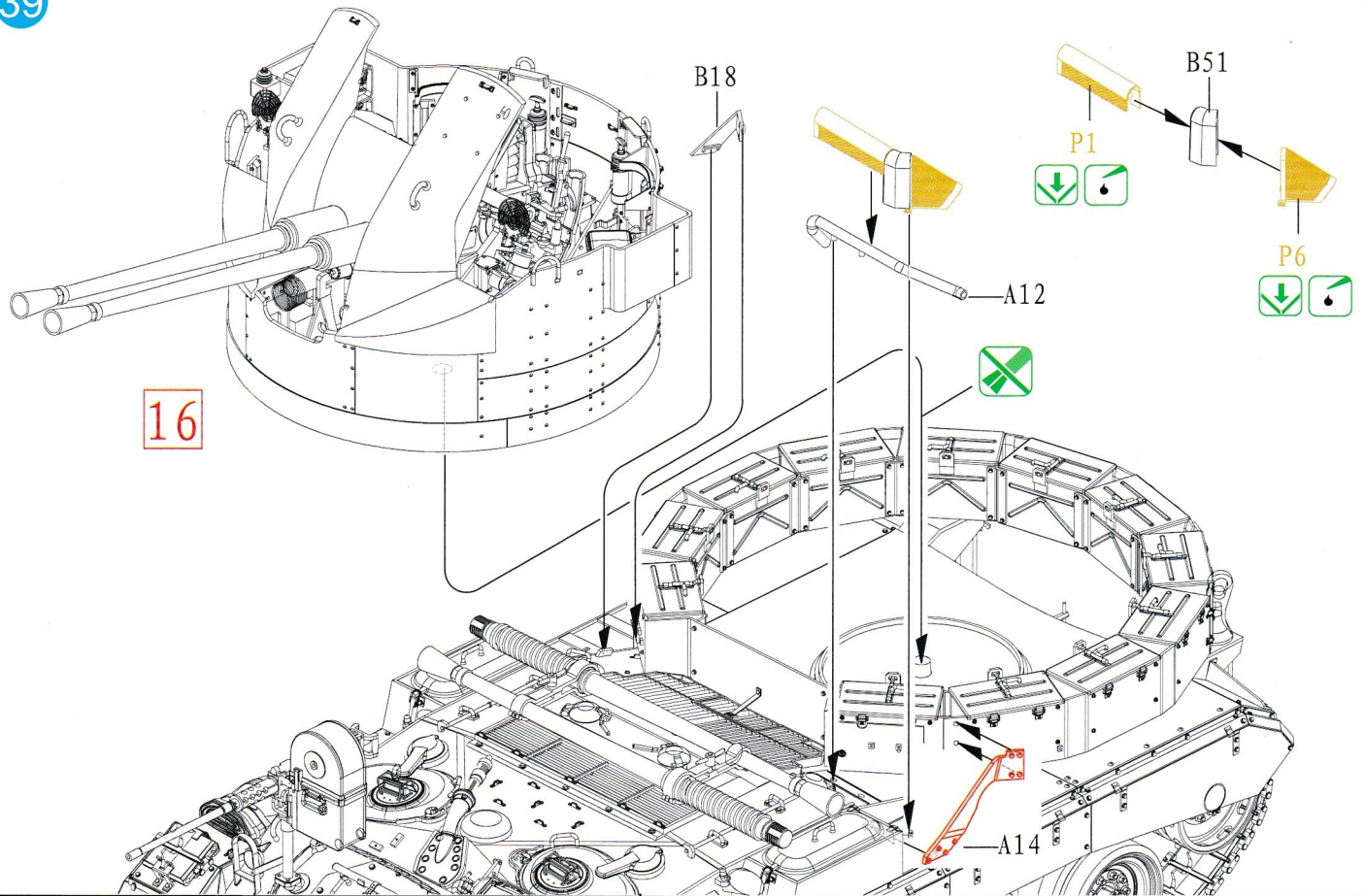


36



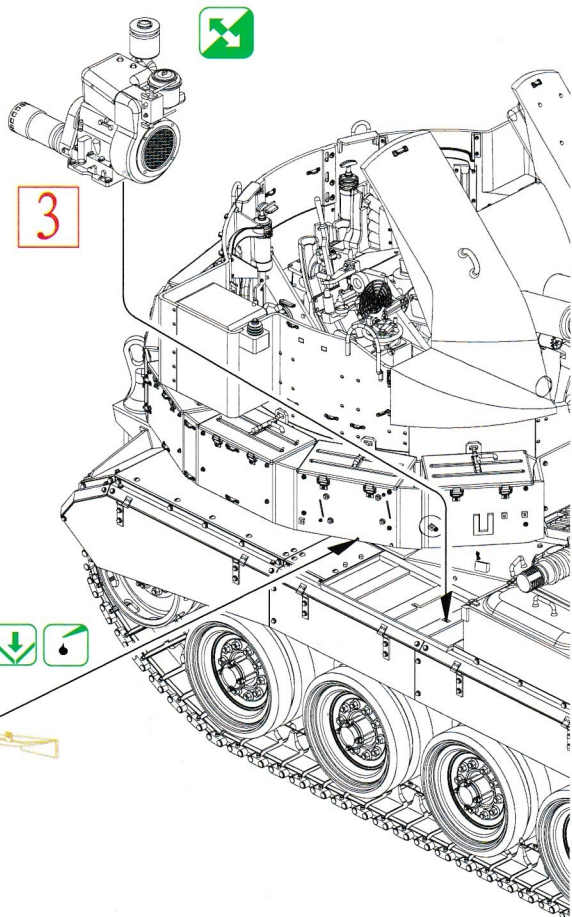


39

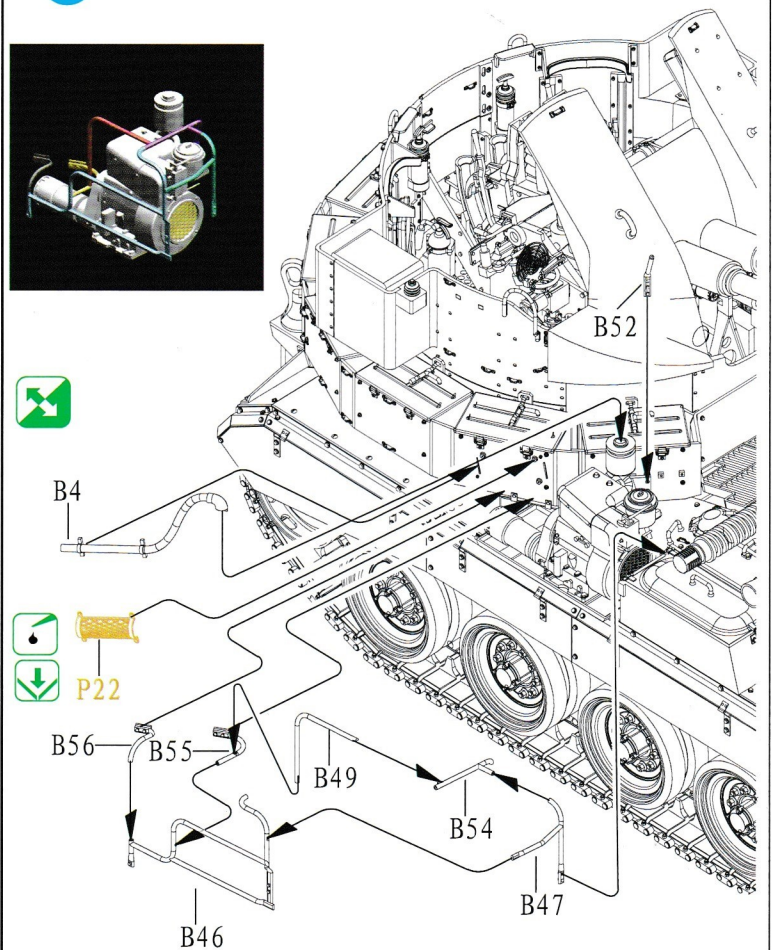
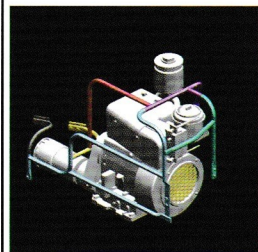


40

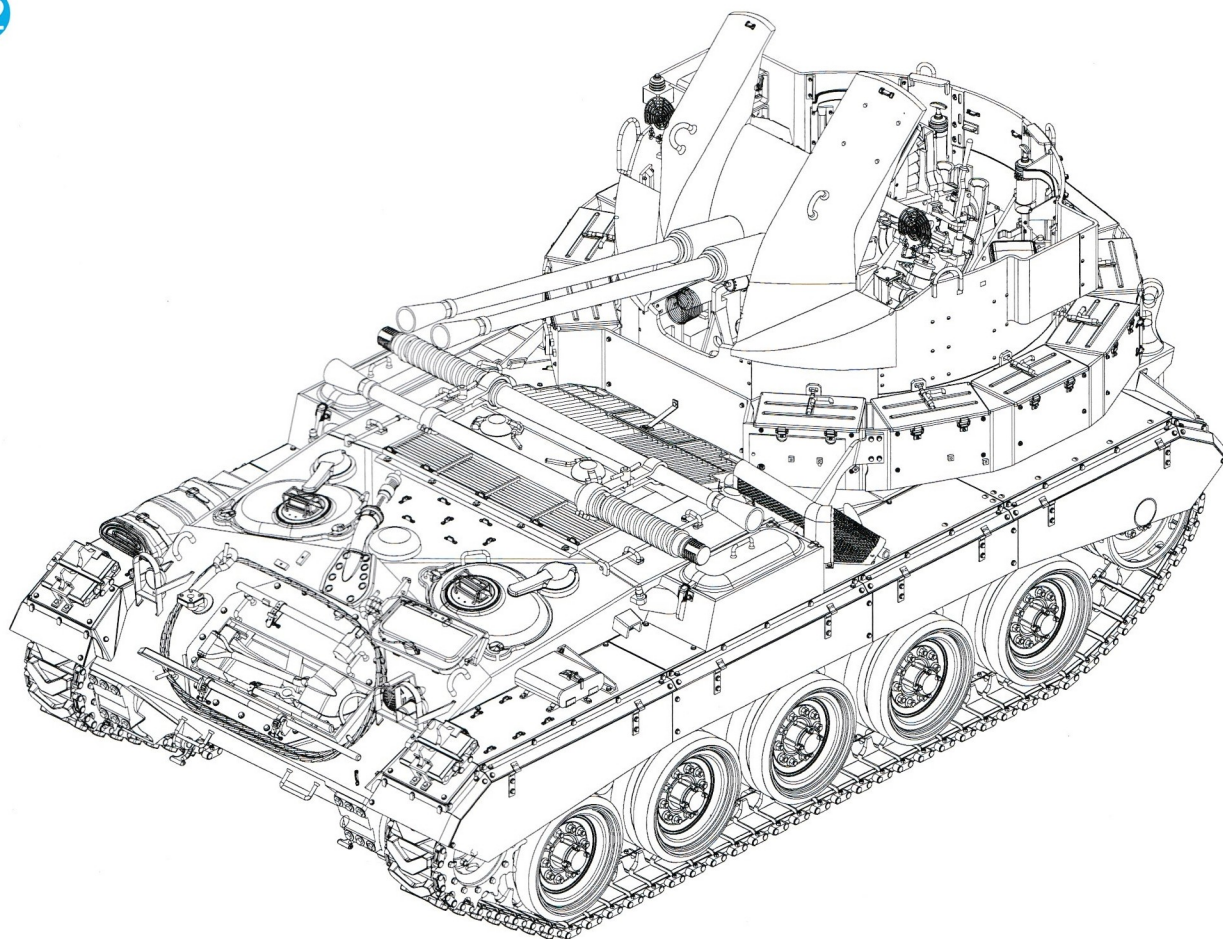
It does appear that the aux. generator addition is post Korean War.
辅助电动机于朝鲜战争后新增。



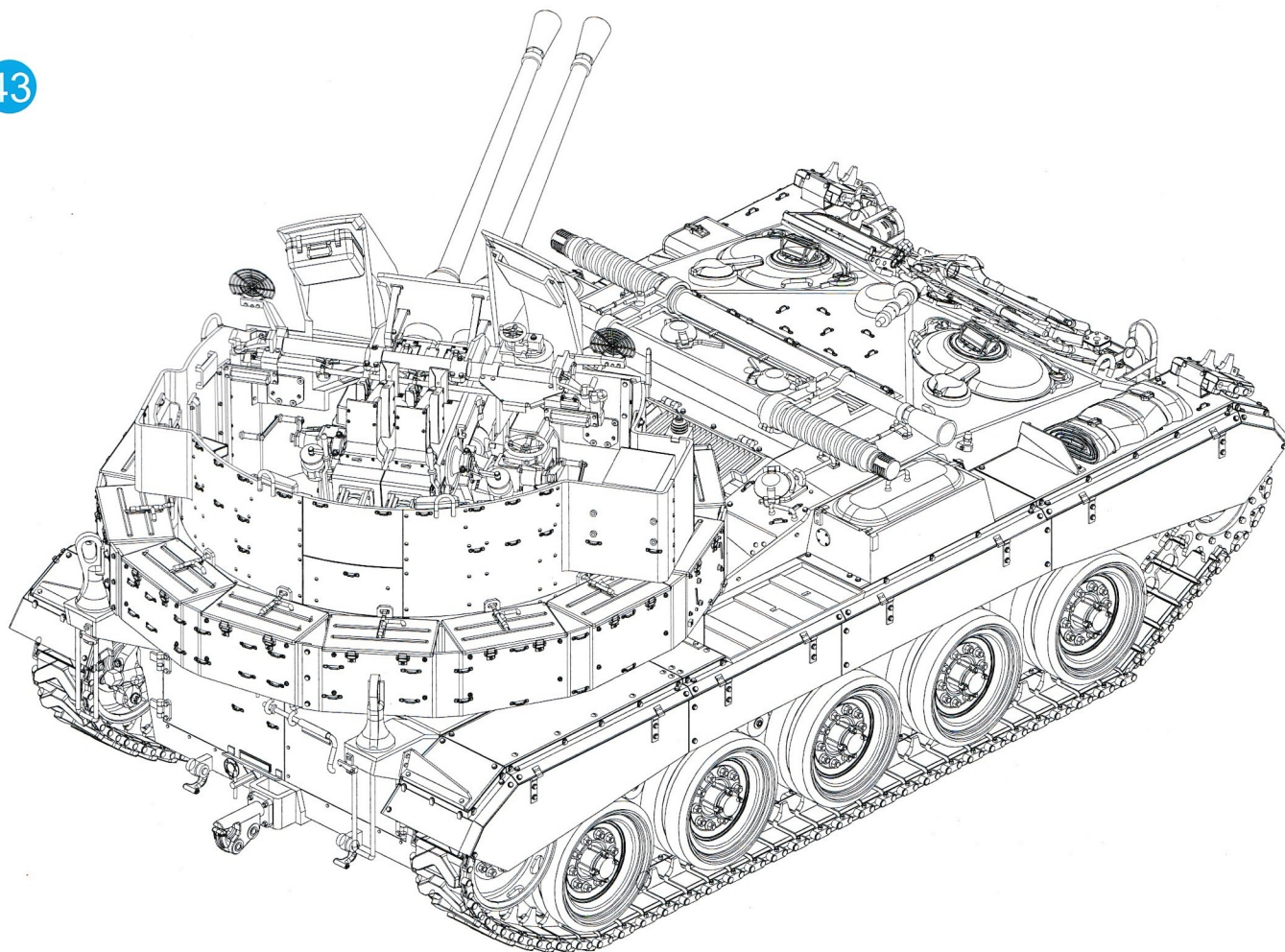
41



42

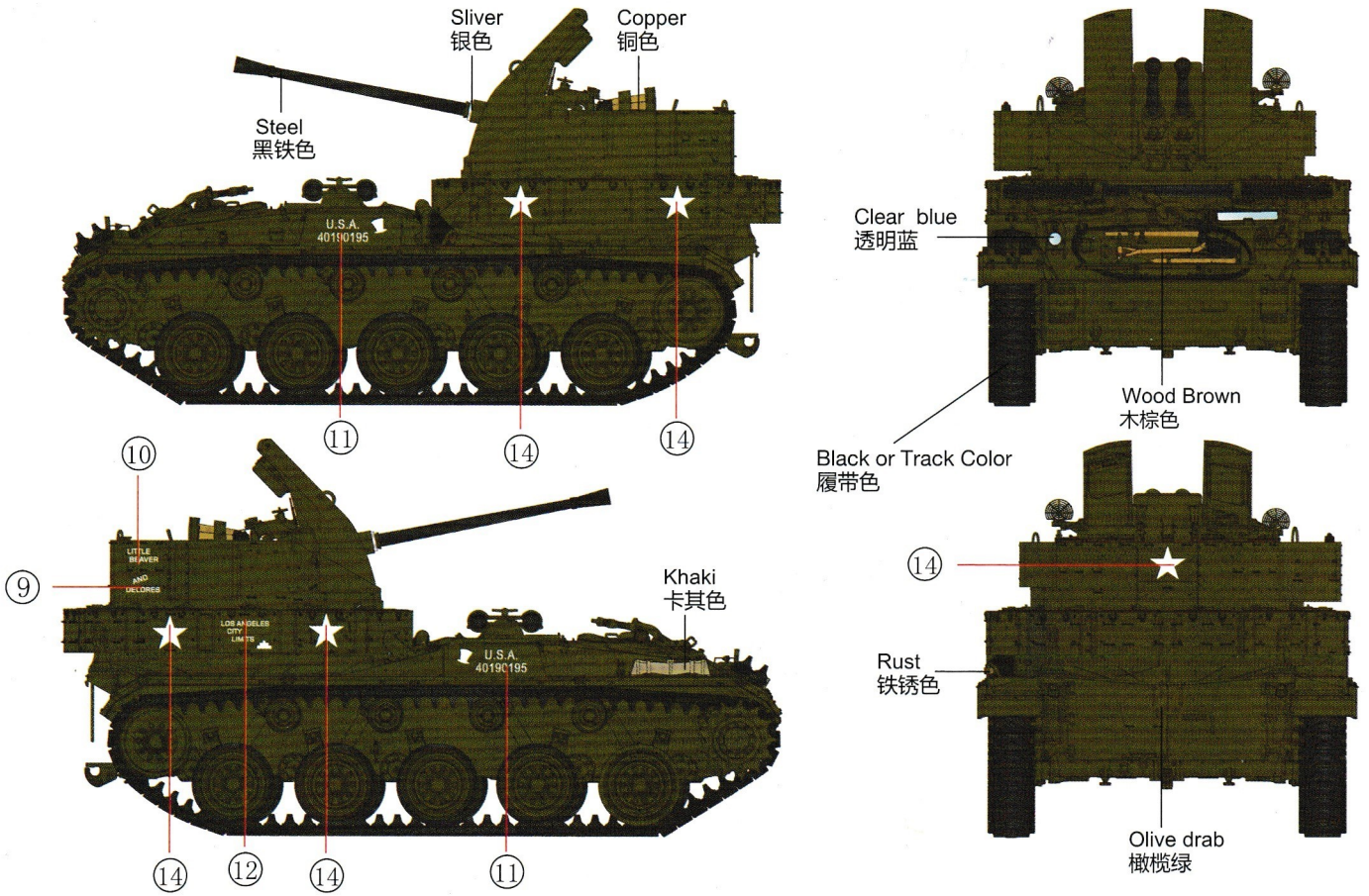


43

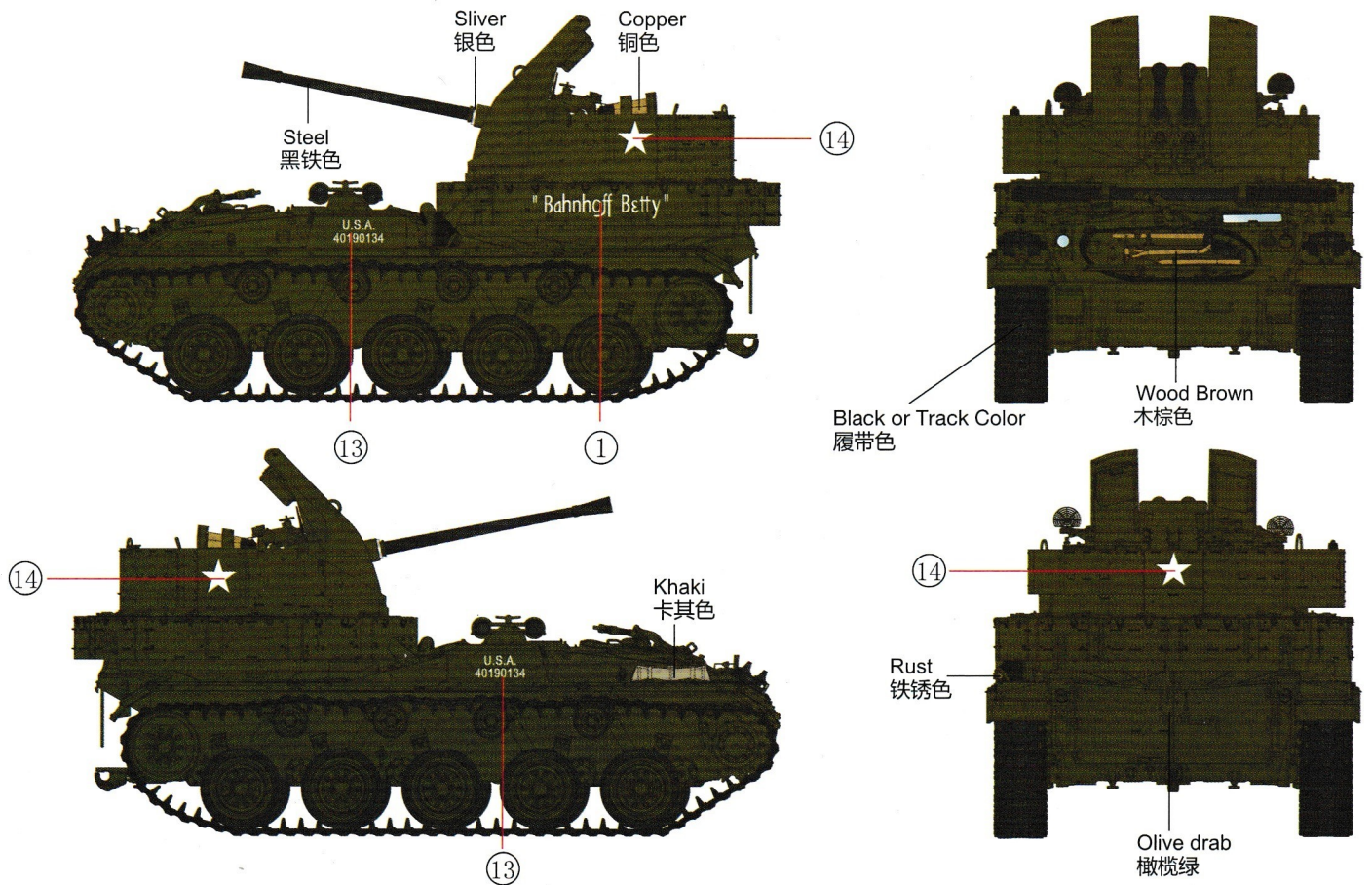


DECAL&COLOUR GUIDE 水贴及涂色指示：

Option 1: M19A1, 15th Anti-Aircraft Artillery Battalion, 7th Infantry Division, US.Army, Hungnam, Korea 1951.
 涂装式样1：美军第15防空炮兵营，第7步兵师，所属，兴南，朝鲜战场，1951。

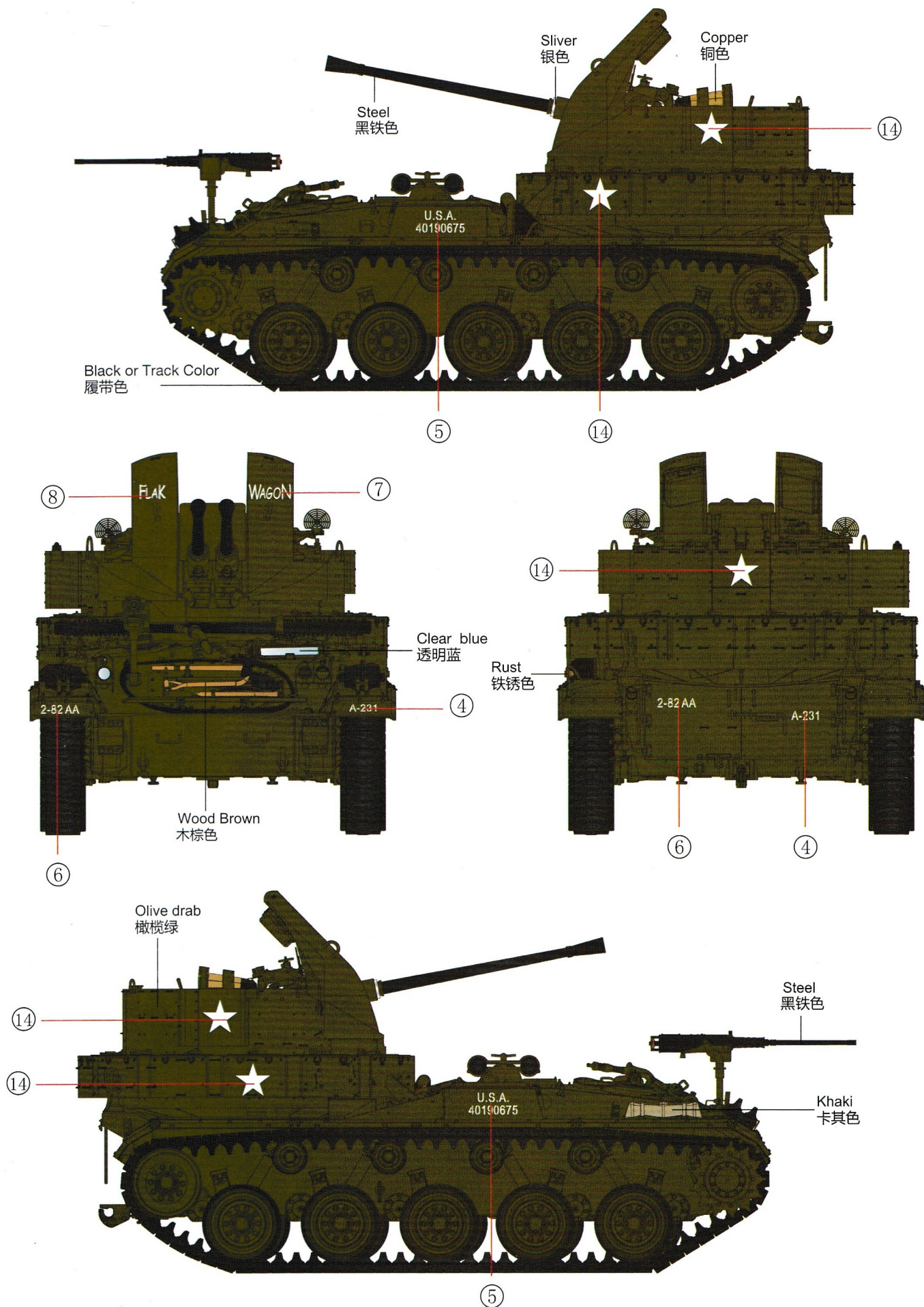


Option 2: M19A1 46th Anti-Aircraft Artillery Battalion, US.Army, Hanau, Germany 1954.
 涂装式样2：美军第46防空炮兵营所属，德国哈瑙，1954。



DECAL&COLOUR GUIDE 水贴及涂色指示 :

Option 3: M19A1, 15th Anti-Aircraft Artillery Battalion, 7th Infantry Division, US Army, Hungnam, Korea 1951.
 涂装式样3 : M19A1 'Flak Wagon' 美军第82防空炮兵营, 朝鲜战场, 1950。



DECAL&COLOUR GUIDE 水贴及涂色指示：

Option 4: M19A1 "Dragon Slayer" MERDC Winter Verdant Camouflage.
 涂装式样4：“屠龙”MERDC冬季绿色迷彩。

