

NWAM0230

1/48 scale



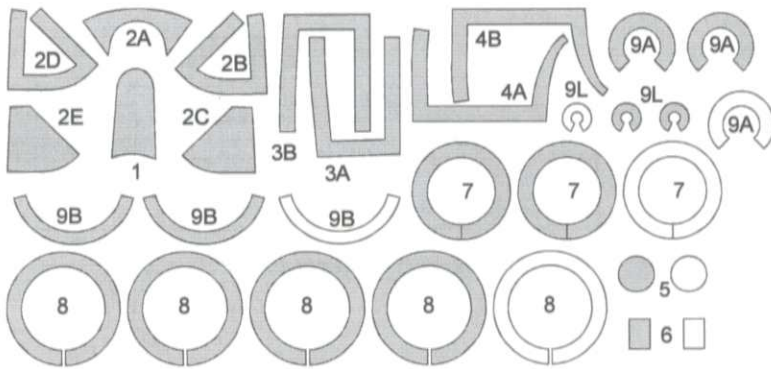
1/48 F7F-3 / F-7F 3N Tigercat BASIC kabuki masks
for Italeri kits 2756 and 2660, AMT/ERTL 8842 and 8843
<http://mek.kosmo.cz/newware>

tom.nwkits@seznam.cz

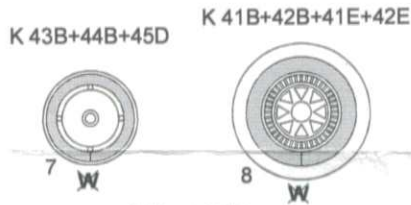
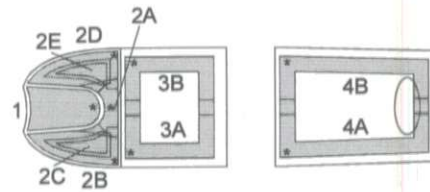
USE ALSO NWC0003 1/48 F7 Tigercat resin wheels

Important:

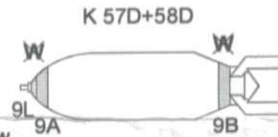
Let the sprayed color dry before applying masks. Remove masks very carefully after painting.
Where the mask is divided into A and B parts, first apply part A, next part B.
The set does not include masks for all areas, so mask the rest with masking tape or liquid mask.
K kit part
* start placing the mask from this point
Placing wet masks on wet surface is recommended, except those marked by **W**



White - spare masks



paint tyre color
place masks
paint disc color



paint yellow
place all masks 9L, 9A and 9B and remove leading mask 9L
paint olive drab