



# M1A1 155MM CANNON LONG TOM WW2 VERSION

M1A1 155mm カノン砲 “ロング・トム” 第二次世界大戦 Ver.



## AF35295

“長脚湯姆” M1A1 155mm 加農砲

According to the need of division's firepower, American Army began the research of long range cannon in 1920 in the hope of installing a 155mm cannon and a 203mm howitzer on one chassis to simplify the production process and to decrease the maintenance cost, the new weapon was produced in 1938 and was named M-1, in 1941 155mm cannon was renamed M-59 and 203mm howitzer was renamed M-115 to avoid any confusion.

M-59 is 7.036 meters long with a maximum firing range of 25000 yard (22860 meters). The chassis supported by a twinhydraulic balance arms. The main fire control system including a M16A1F elbow-sight and a M12A7C round-sight. When in use, The chassis of M59 must be lowesed and steadied by an anchor, and will be able to move from a upward angle of 60 degree 30 to a downward angle of 1 degree 50. Towed M-59 chassis is installed on a 8-wheel bogie plus a 2-wheel trailer and is operated by a 14 member team. AT the end of world war. M-1 carriage was installed in a M4A3 tank hull to increase its mobility and was named M-40 self-propelled gun.

M-59 cannon has been in use in countries like U.S.A , R.O.C (Taiwan) , Japan , Austria , Argentina , Demnark , Greek , Italy , R.O.K , Jordan , Pakistan , Turkey , Czechoslovakia etc.

アメリカ陸軍は師団級重砲兵の火力の要求に応じて、1920年ころに長距離キャノン砲の研究開発に着手。目的としては同一の砲架を用いて155mm キャノン砲及び203mm榴弾砲を搭載でき、生産の単純化及びメンテナンスコストを減少する。このような概念は1938年に実施生産され、並びに M-1 型砲架と名付けた。まだ、155mm と 203mm 砲両者の形式番号の混淆を防ぐため、1941年に155mm キャノン砲を M-59 に改め、203mm榴弾砲はM-115と名付けた。

M-59の砲身は7.036m、最大射程は25000ヤード(22860メートル)、砲座本体はU型揺架を与え、双液気圧平衡桿と配合し支持する、主要射撃統制システムはM16A1F肘型鏡及びM12A7C周視鏡から構成する。M-59が射撃の時には、砲架を降下し、砲身固定具を用いて平衡に保持する必要がある、仰角60°30から仰角1°50の射撃動作を行うことができる。牽引式 M-59 砲架は、8輪の台車の上に置かれ、さらに一体2輪の尾車に加え、14人編成された操作班でしか作動できない。アメリカ軍は大戦の末期に、M-1 砲架座をM4A3に設け、M-40自走砲名付けた、その機動作戦能力を増加した。

M-59キャノン砲は以前にアメリカ、中華民国(台湾)、日本、オーストラリア、アルゼンチン、デンマーク、ギリシャ、イタリア、韓国、ヨルダン、パキスタン、トルコ及びチェコスロバギア等国に服役されていた。

美國陸軍基於師級重砲兵の火力需求，遠在1920年便著手長射程加農砲的開發，希望能以同一種砲架來搭載155mm加農砲及203mm榴彈砲，達到簡化生產及維護成本。此概念於1938年正式付諸生產，並命名為M-1型砲架。為避免155與203mm砲兩者的型浩混淆，1941年將155mm加農砲改稱M-59而203mm榴彈砲則改稱為M-115。

M-59砲身長7.036m，最大射程可達25.000碼(22.860公尺)砲座本體包含一附U型揺架配合双液氣壓平衡桿支撐，主要射控系

統由M16A1F肘型鏡及M12A7C週視鏡組成，M-59砲架係於一組8輪台車上，外加一組兩輪的M-2尾車，由14員組成的操作班可操作。美軍於大戰末期時將M-1砲座架設於M4A3載具上命名為M-40自走砲，加大其機動作戰能力。

M-59加農砲曾服役於美國、中華民國、日本、奧地利、阿根廷、丹麥、希臘、義大利、韓國、約旦、巴基斯坦、土耳其及捷克等國家。

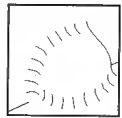
## Color list: 塗料表

| Color                       | Brand | GSI Creos   |          |                | Humbrol | AV Vallejo | Lifecolor |
|-----------------------------|-------|-------------|----------|----------------|---------|------------|-----------|
|                             |       | Hobby Color | Mr.Color | Mr.Color Spray |         |            |           |
| Dark green No.24 B.S.381 深綠 |       | H330        | C330     |                | 75      |            | UA121     |
| Green FS34079 綠             |       | H309        | C309     |                | 195     |            | UA52      |
| Olive drab(1) 橄欖褐           |       | H52         | C12      | S12            | 155     | 70887      | UA15      |
| Silver 銀                    |       | H8          | C8       | S8             | 11      | 70997      | LC74      |
| Steel 黑鐵                    |       | H18         | C28      | S28            | 53      | 77712      | LC76      |
| Tire black 輪胎黑              |       | H77         | C137     |                | 85      | 70950      | LC02      |

### 圖示說明 Illustration:



Agglutinate  
用膠黏合



Fill Hole  
把孔填平



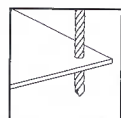
Optional  
選擇使用



No Agglutinate  
不用黏合



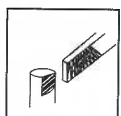
Be Careful  
注意



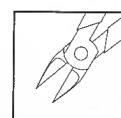
Open Hole  
鑽孔



Make 2 Sets  
二組製作



Remove  
將其磨去



Cut Off  
切除



Instsnt Glue  
使用瞬間膠



Symmetrical part  
對稱

### Method For Applying Decals:

1. Clean Model Surface With Wet Cloth.
2. Cut Out Of Decal Sheet And Dip Them In Warm Water For 15 Seconds.
3. Place it on proper position on model.
4. Slide off base paper leaving decals On Model With Wet Finger Tip.
5. Move Decals To Exact Position, Push Out Excess Water Under Decal With Soft Cotton Cloth.
6. When Decals Get Dry Then Complete.

### 水貼紙使用說明：

1. 將模型表面擦乾淨。
2. 將貼紙剪下泡入溫水中浸泡約15秒。
3. 將泡濕之貼紙取出置於欲貼處旁。
4. 用指尖輕推貼紙表面使其滑出底紙。
5. 將貼紙調整至適當位置並輕擦拭水分。
6. 待其自然乾燥後即完成。



**AF35024**  
M10 美軍驅逐戰車  
M10 TANK DESTROYER

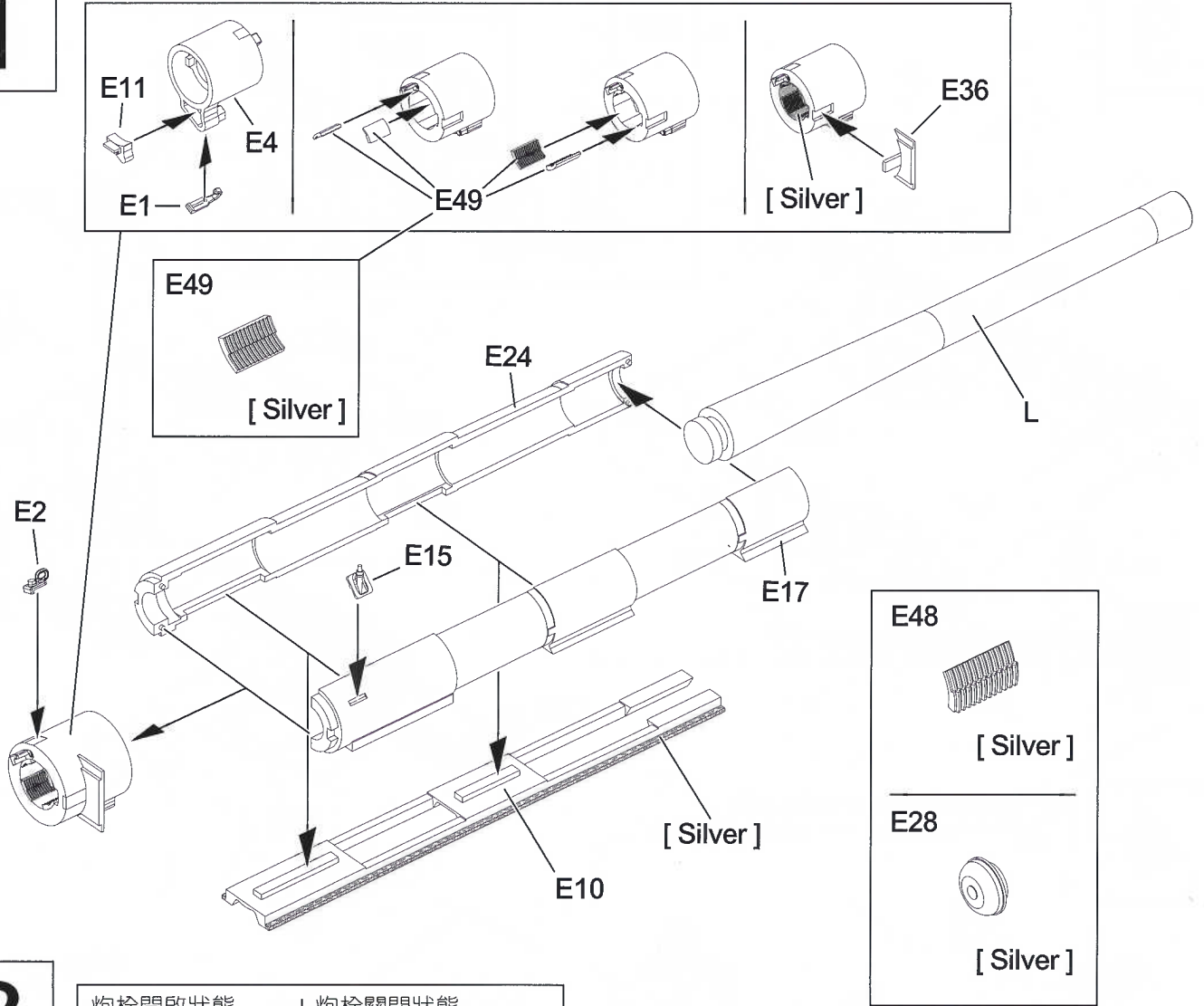


**AF35031**  
M40 155mm 自走加農砲  
M40 155mm GUN MOTOR CARRIAGE

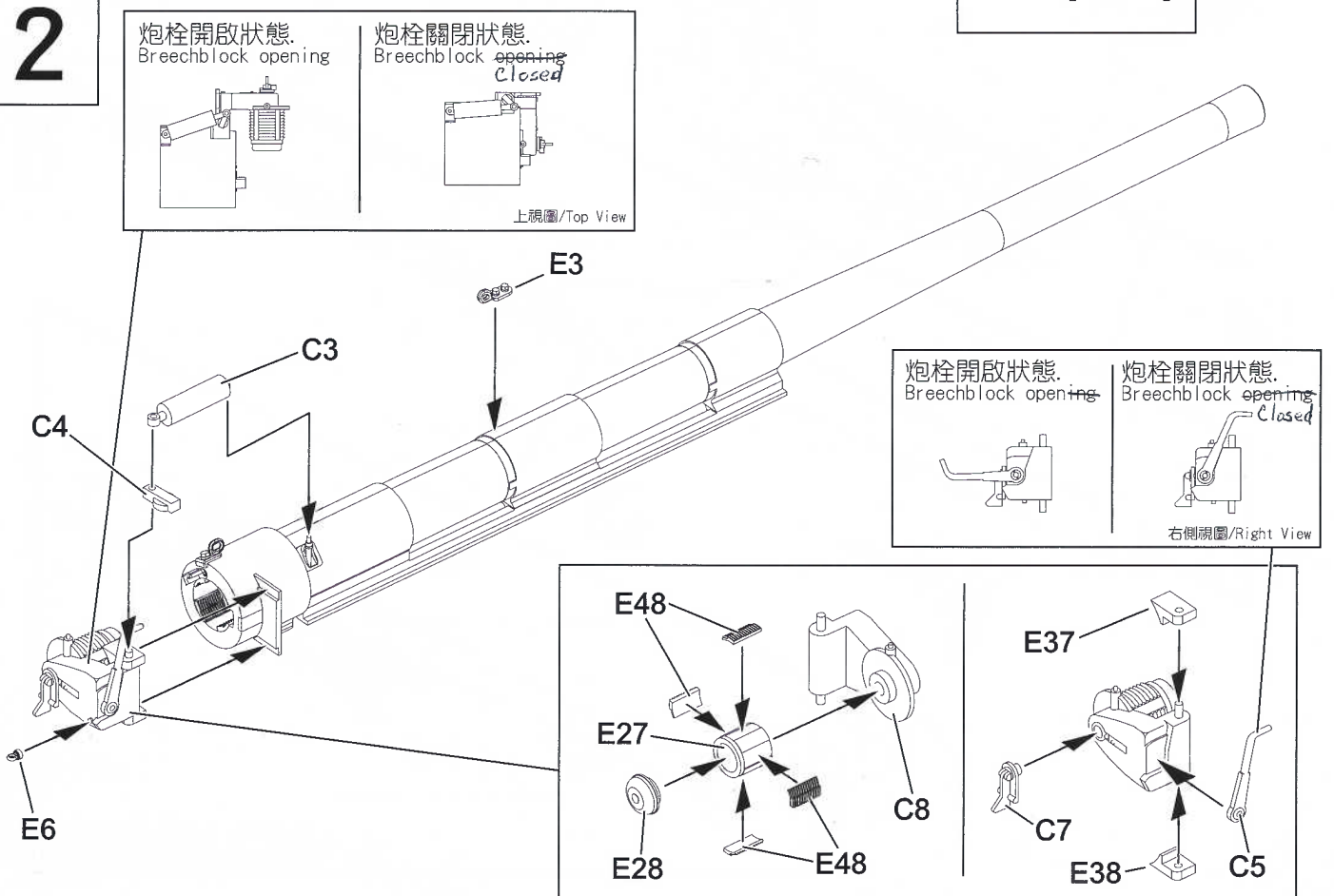


**AF35321**  
M1 八吋榴彈砲 二戰型  
M1 203mm Howitzer WW2 Version

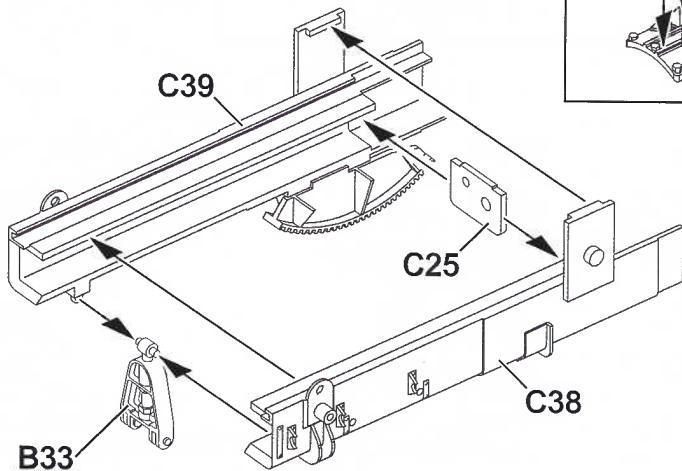
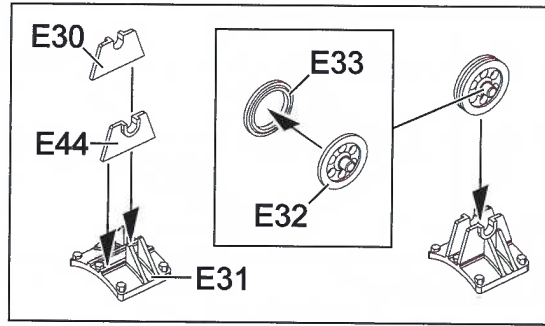
# 1



# 2



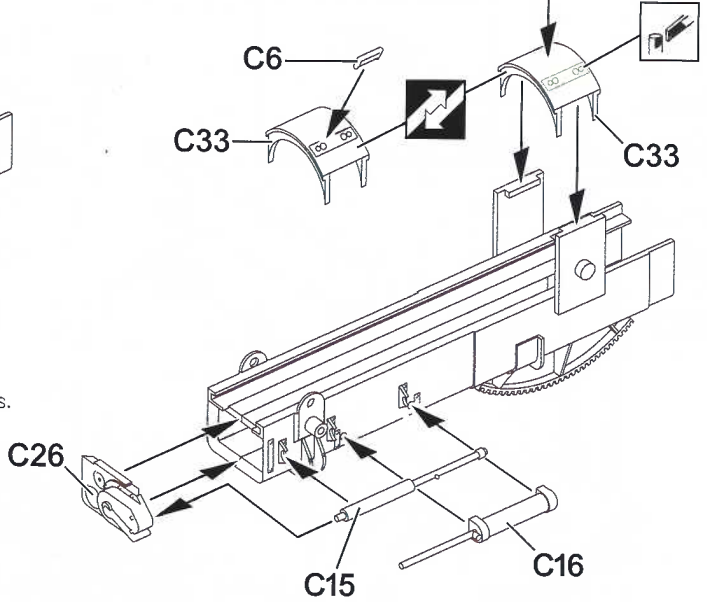
3



B33



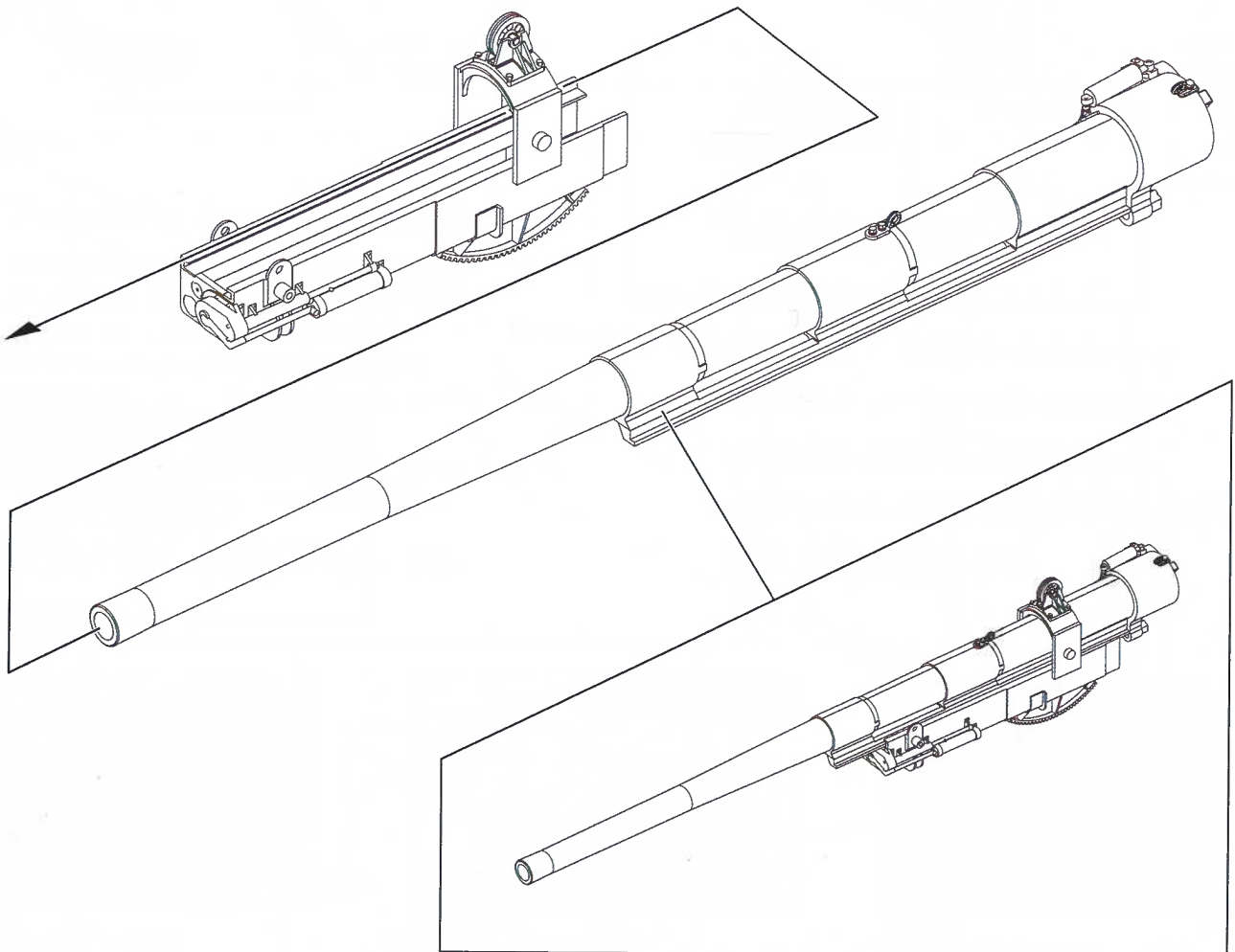
製作拖曳狀態時需先在此步驟組裝B33零件。  
Install assembly B33 in advance, when choose drag status.



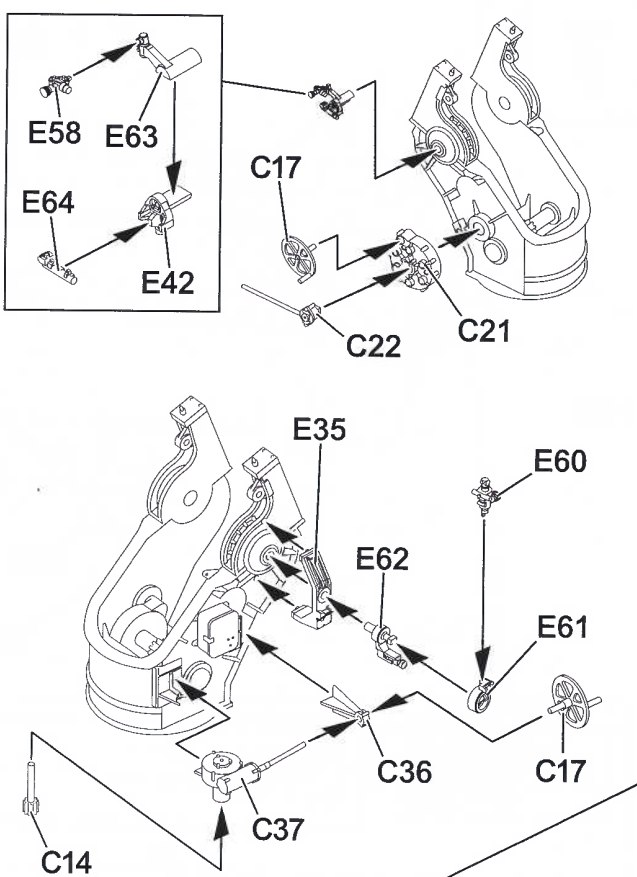
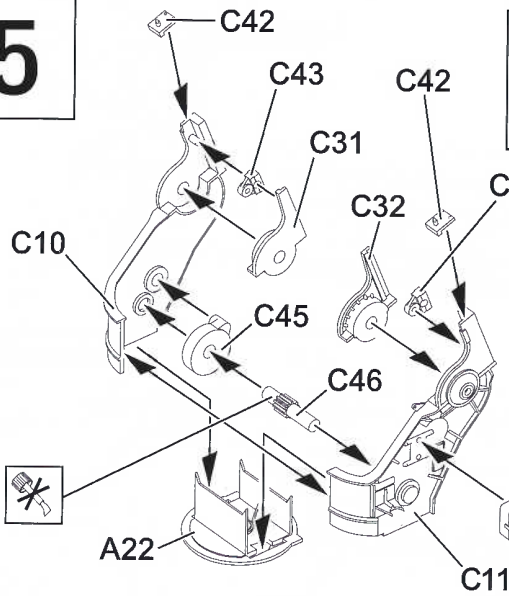
4



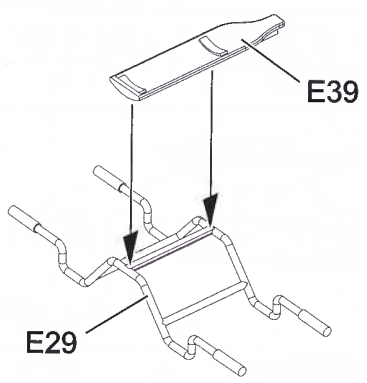
將砲管穿入時請注意是否合上導軌。  
Note barrel and rail are aligned or not.



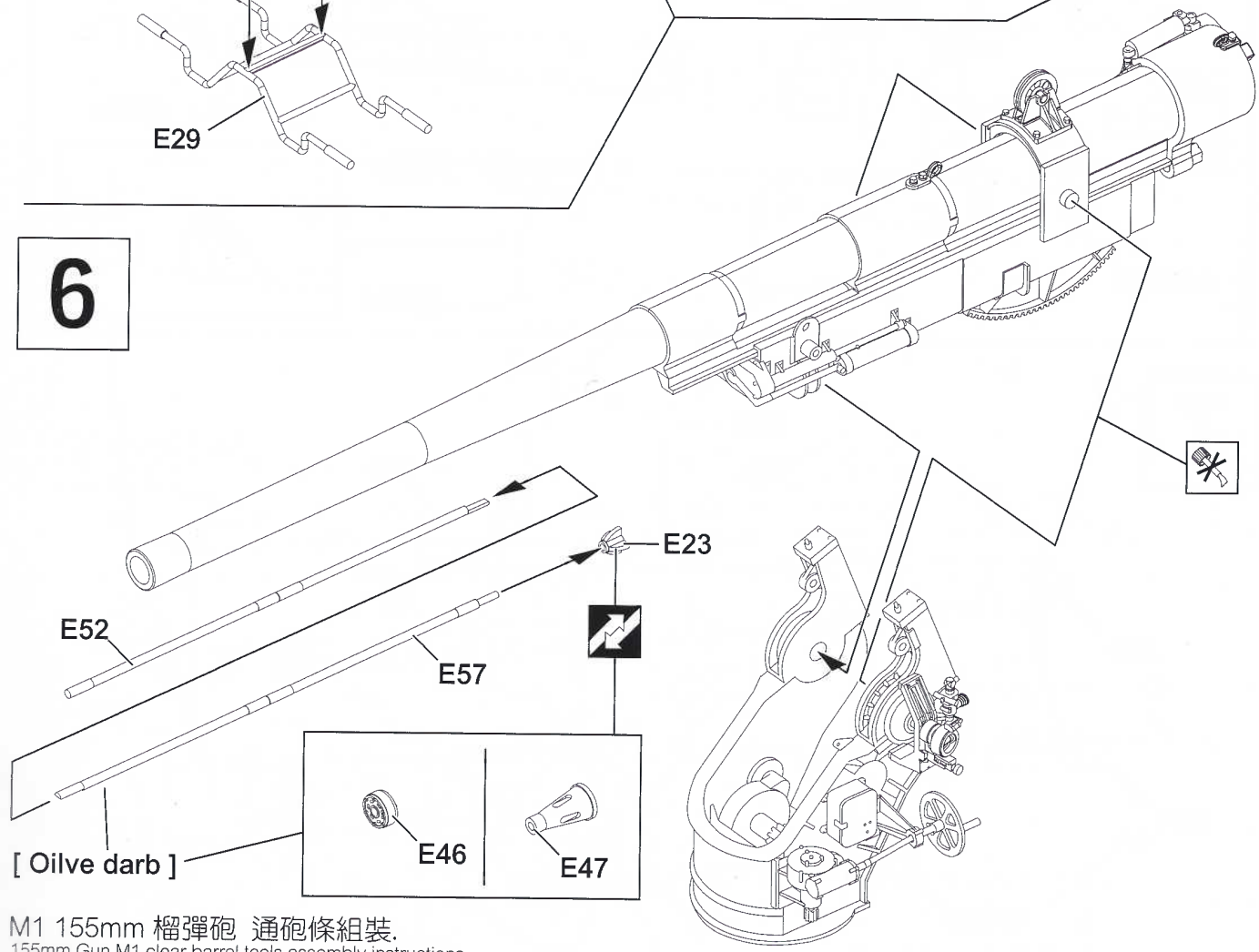
5



砲彈搬運架組裝  
Loading tray assembly instructions.

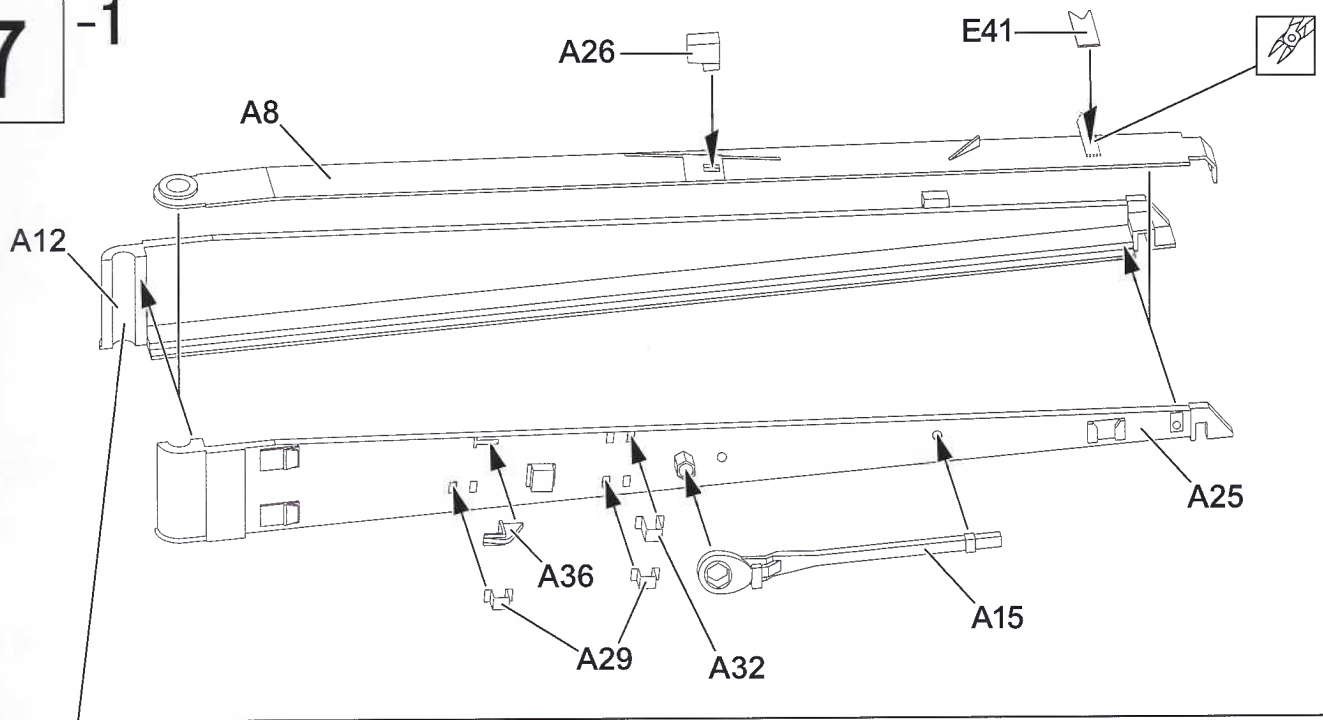


6

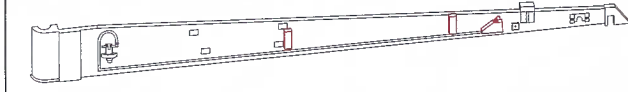


M1 155mm 榴彈砲 通砲條組裝.  
155mm Gun M1 clear barrel tools assembly instructions

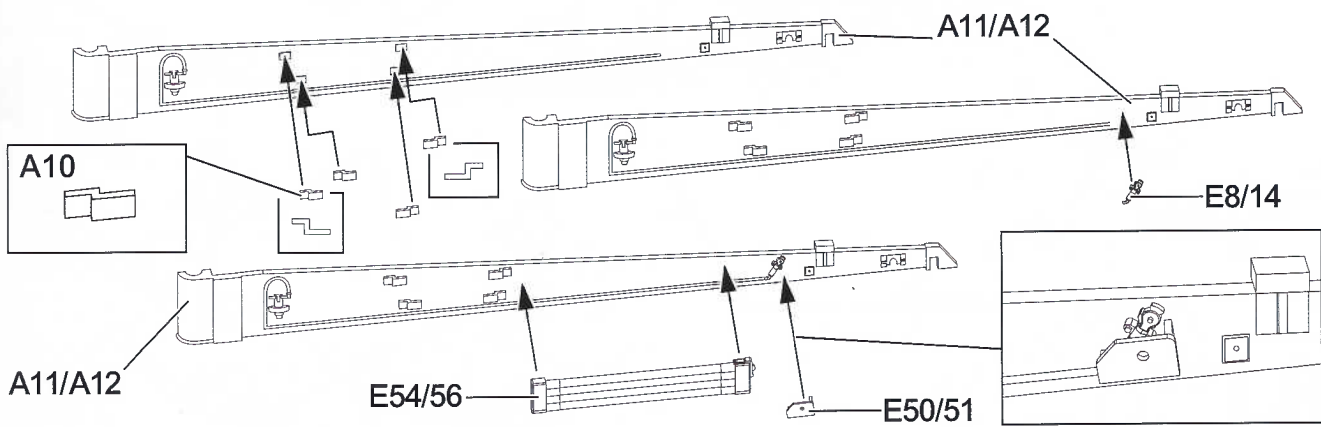
7<sup>-1</sup>



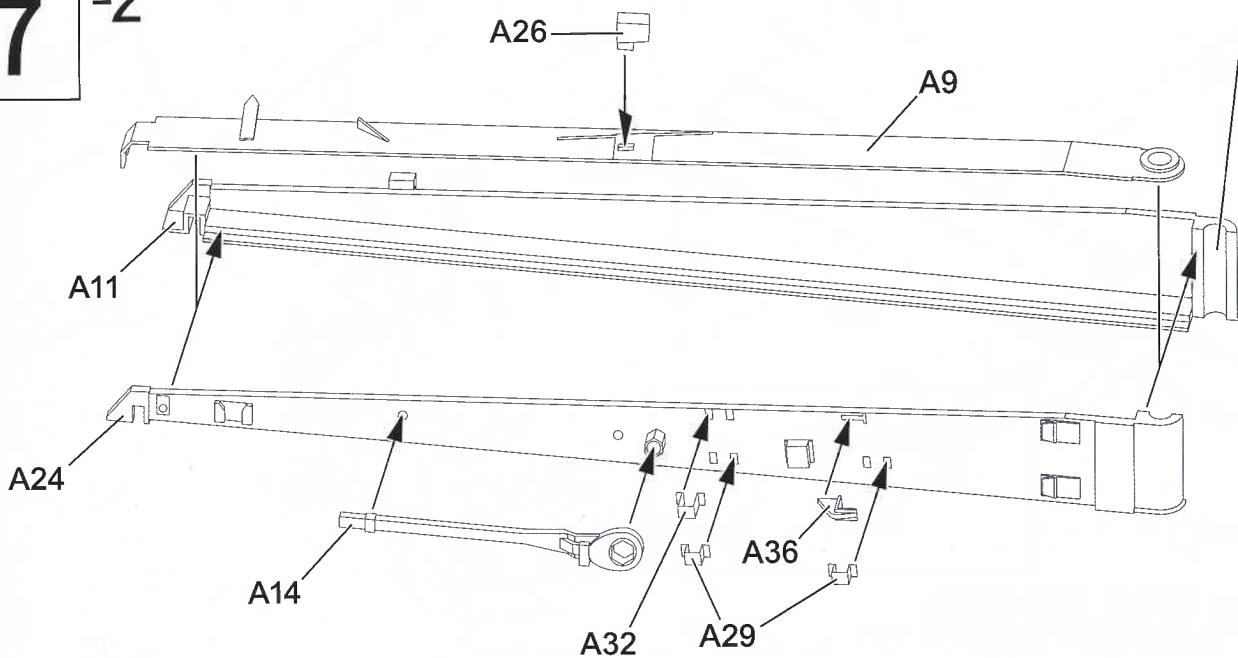
×2



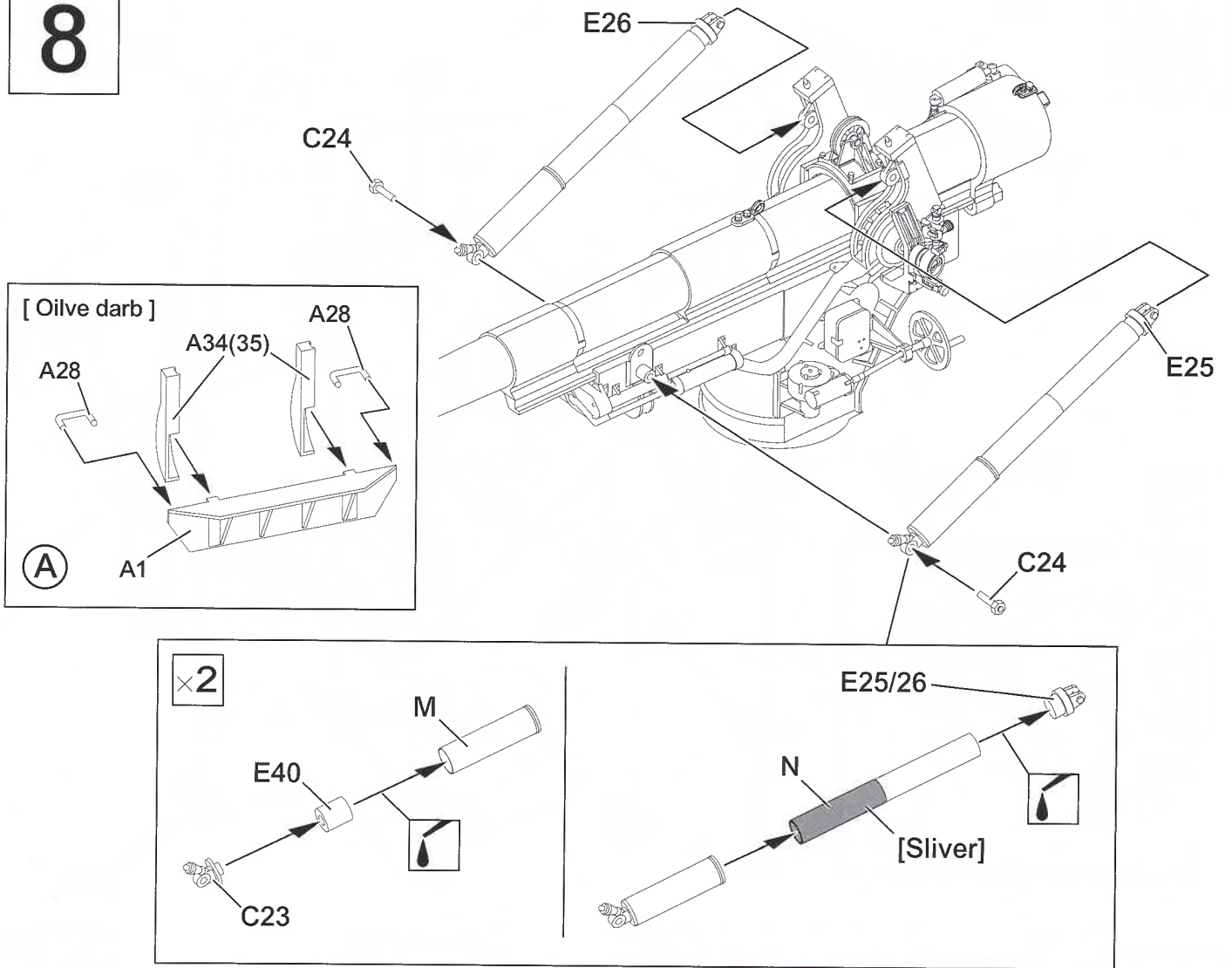
將原部件上此處的零件磨除。  
Smoothing and grinding this part.



7<sup>-2</sup>



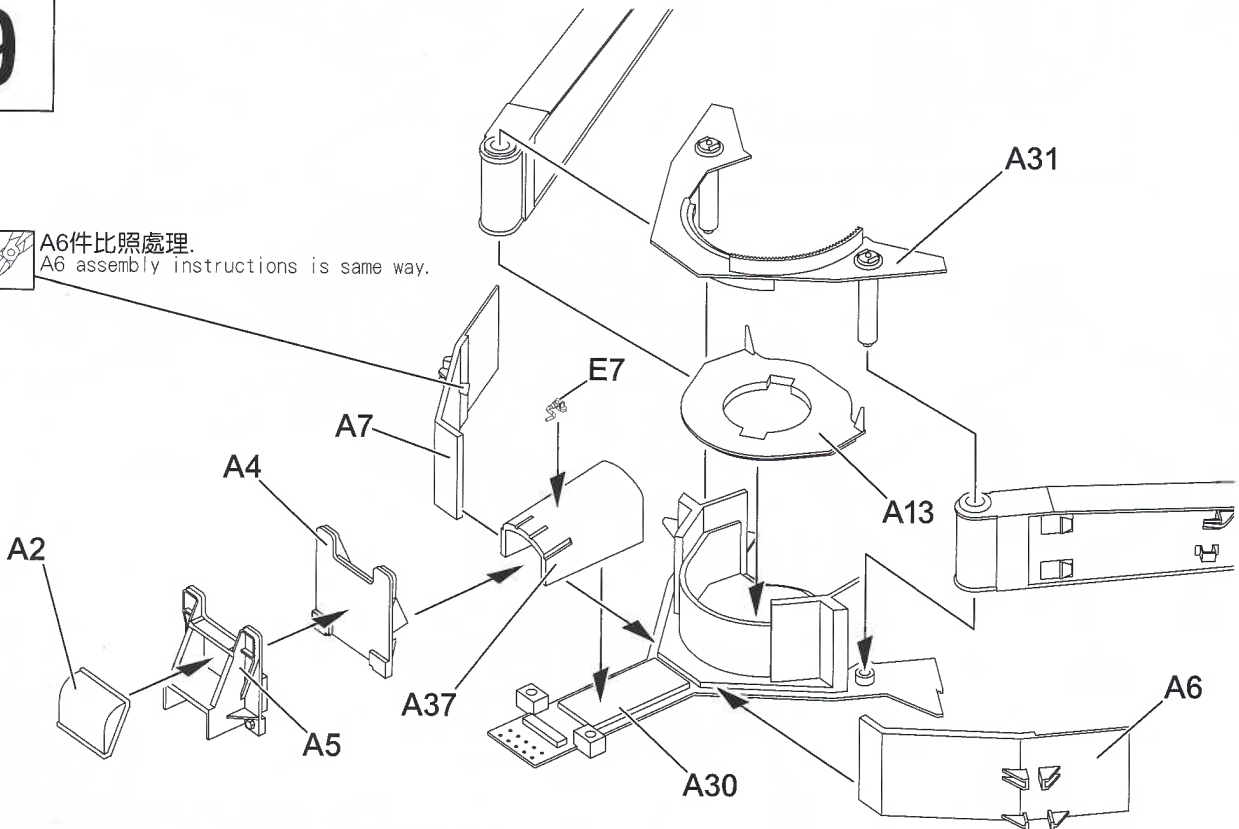
8



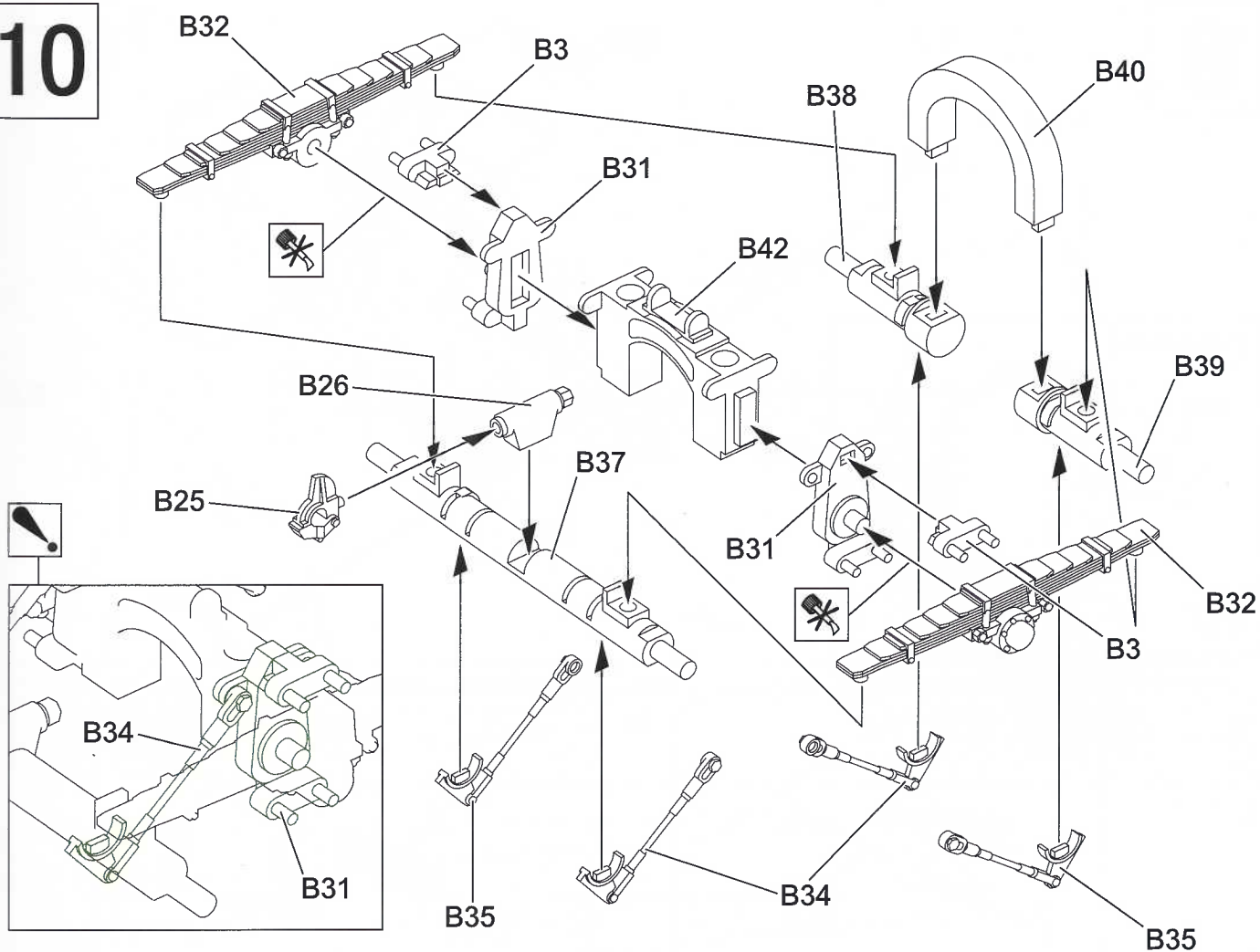
9



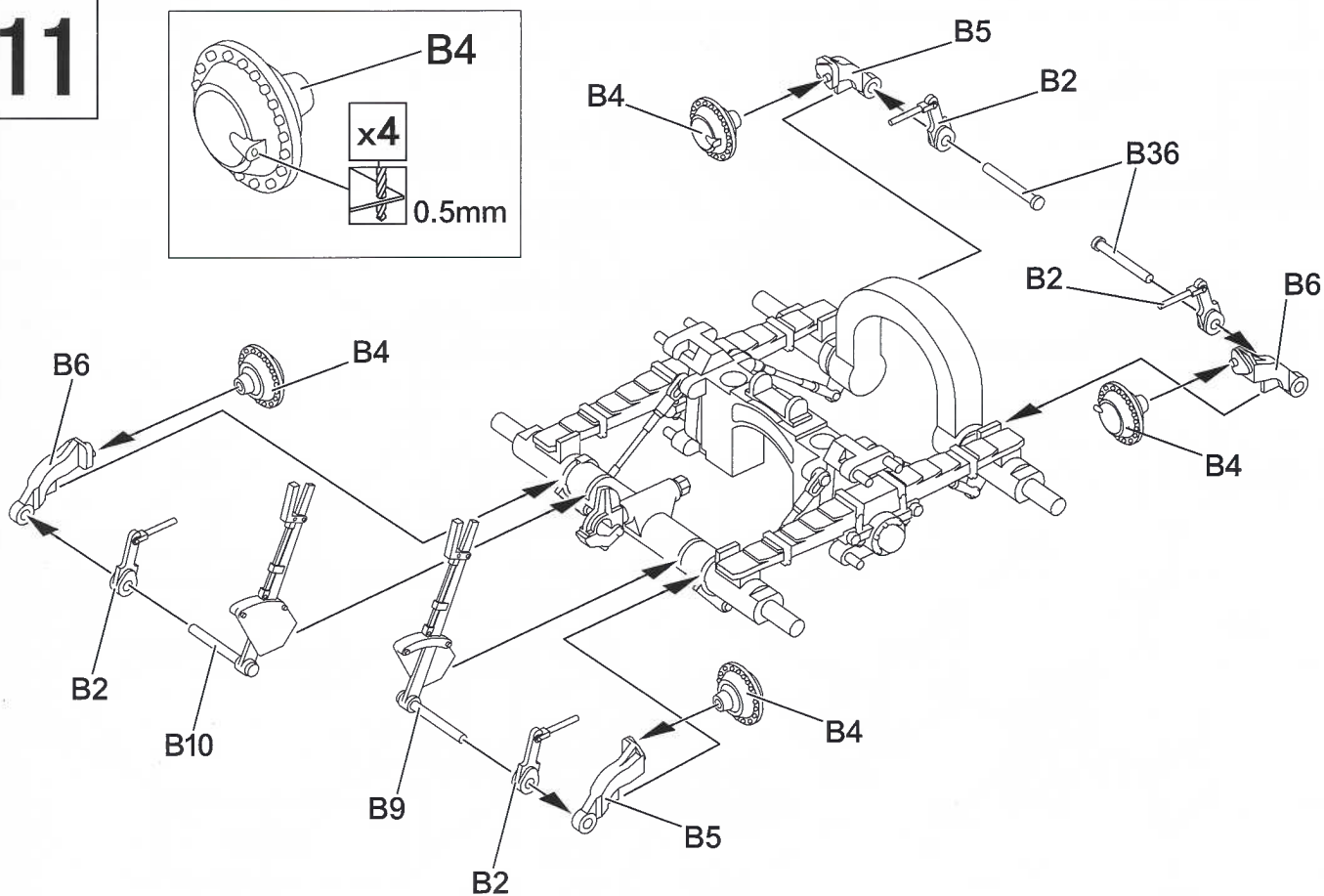
A6件比照處理。  
A6 assembly instructions is same way.



10

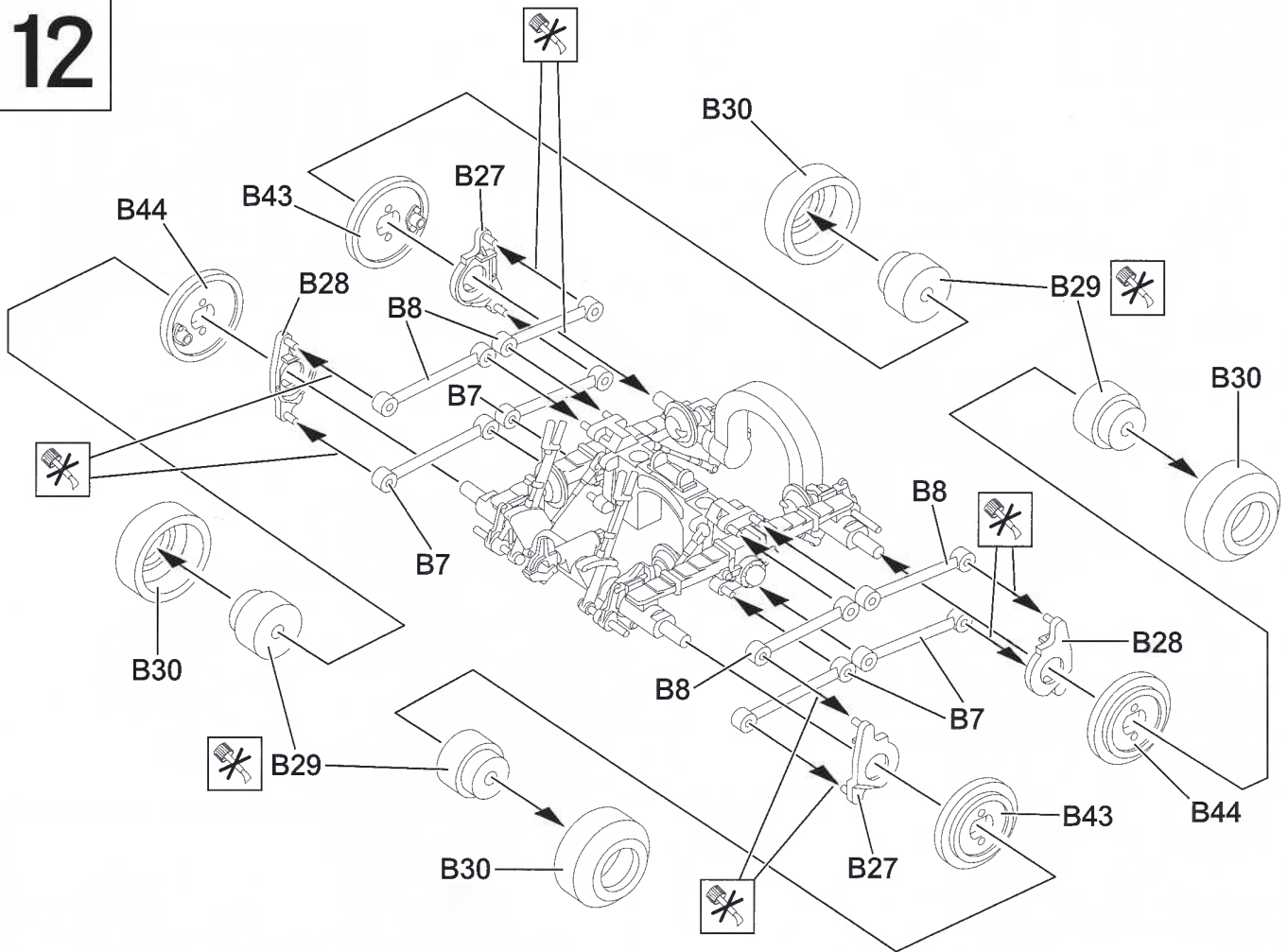


11

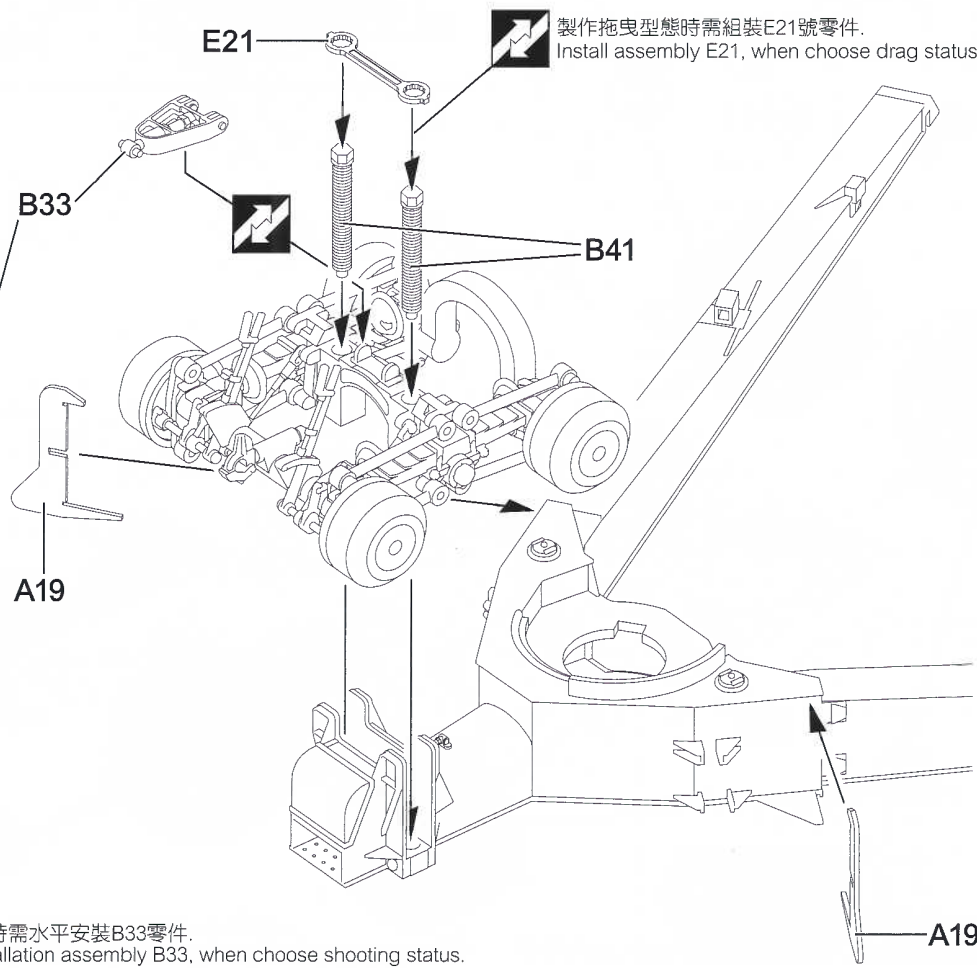




# 12

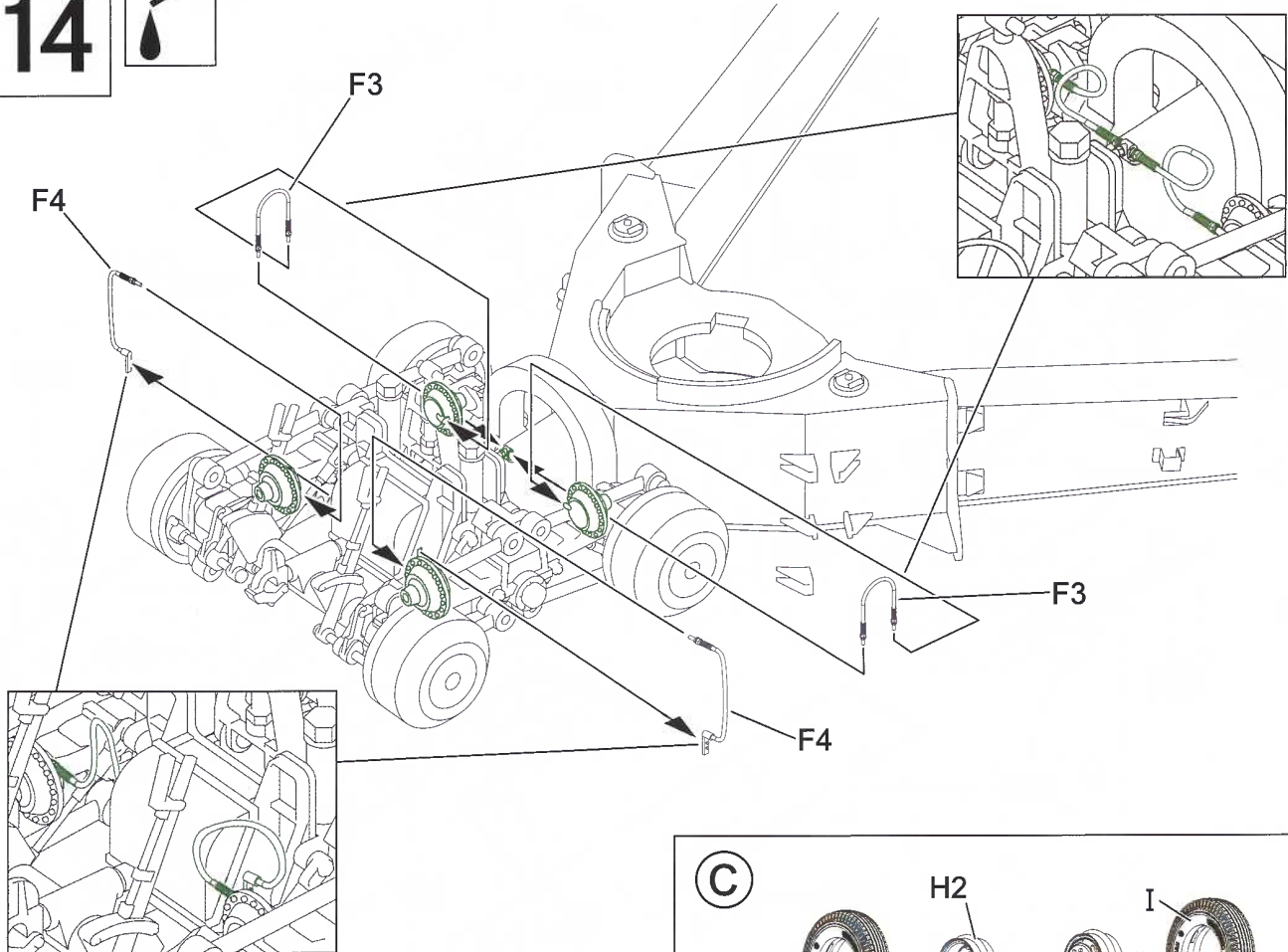


# 13

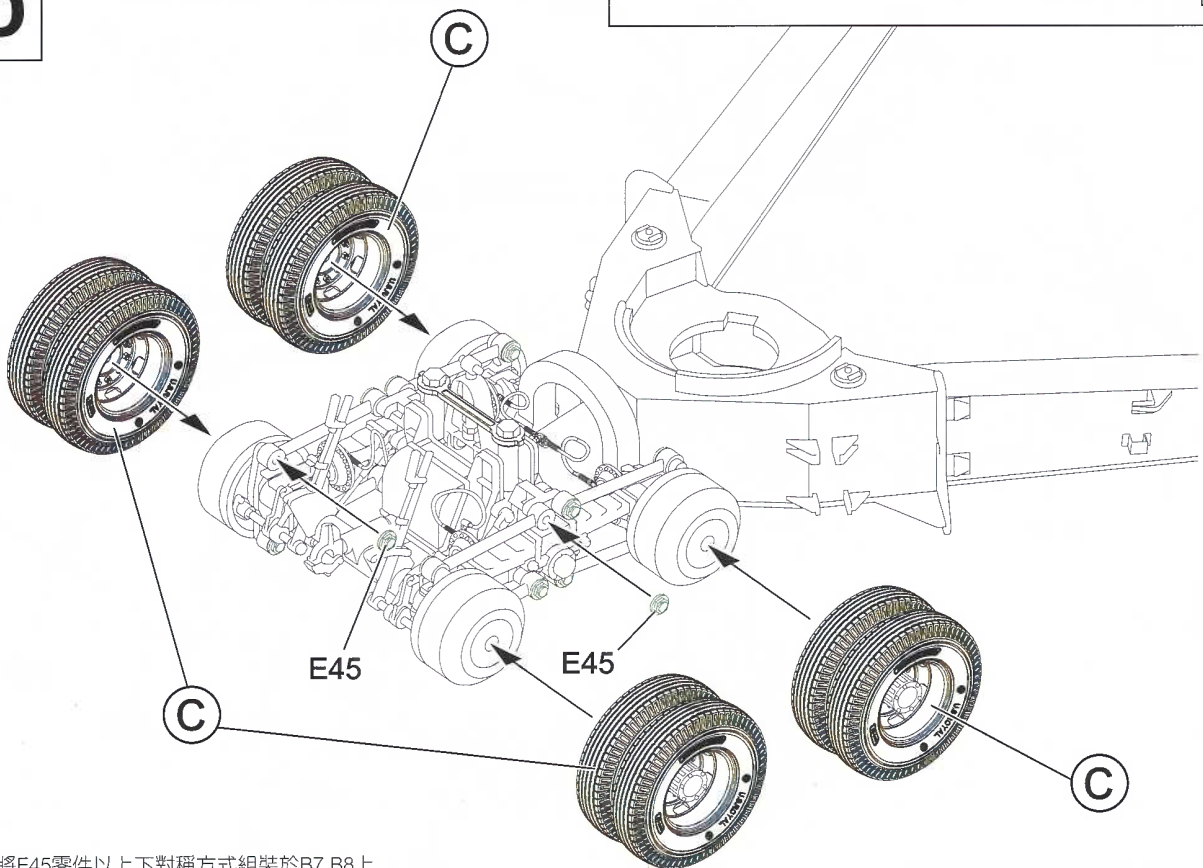
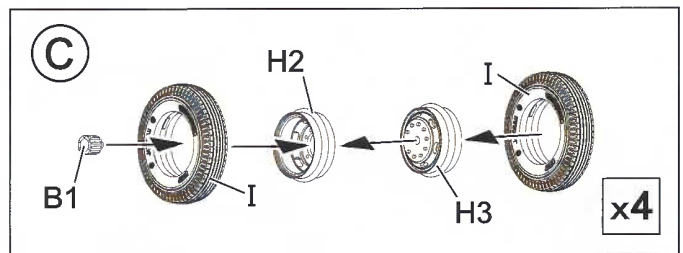



製作射擊型態時需水平安裝B33零件。  
Horizontal installation assembly B33, when choose shooting status.

# 14

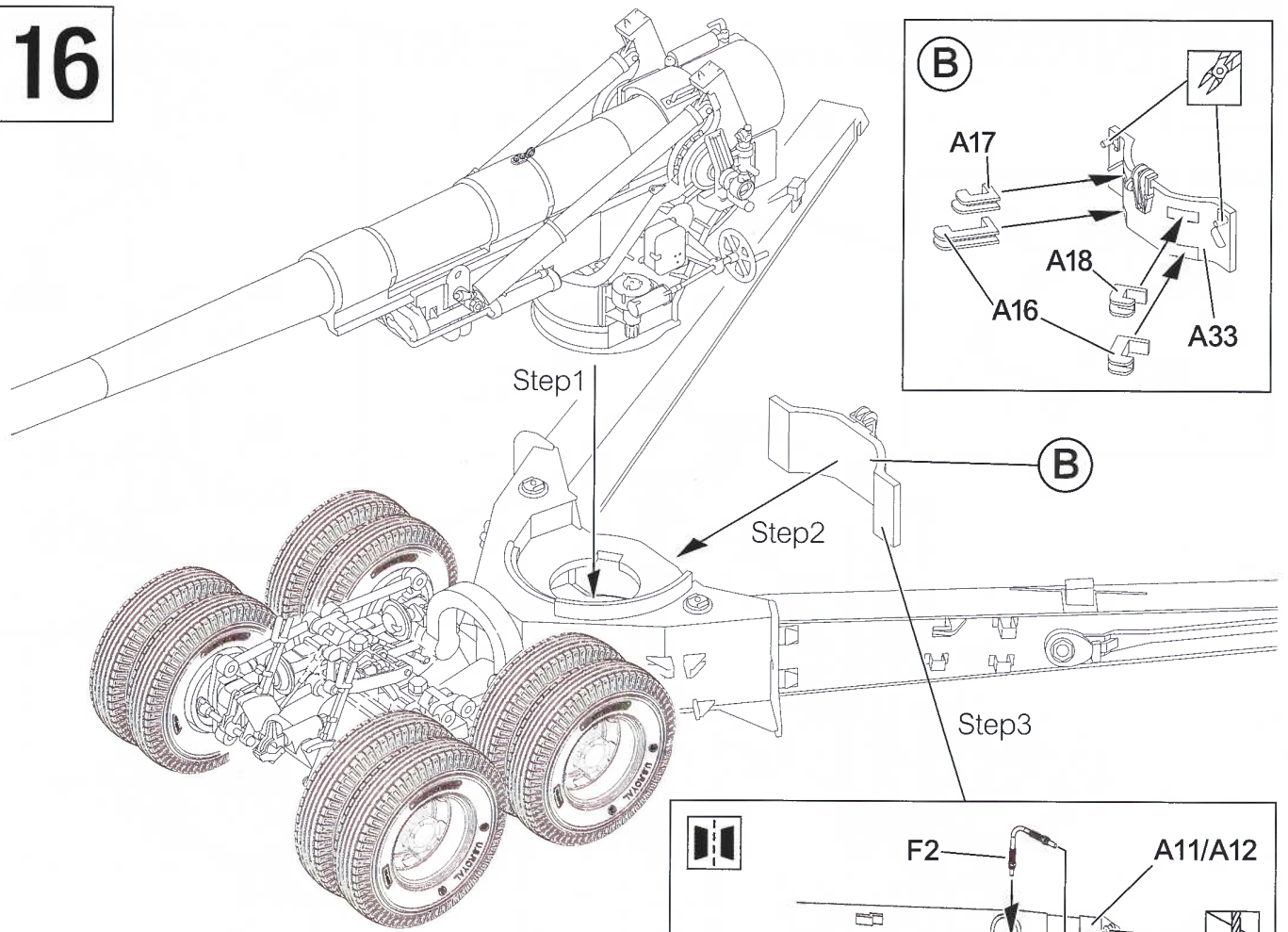


# 15



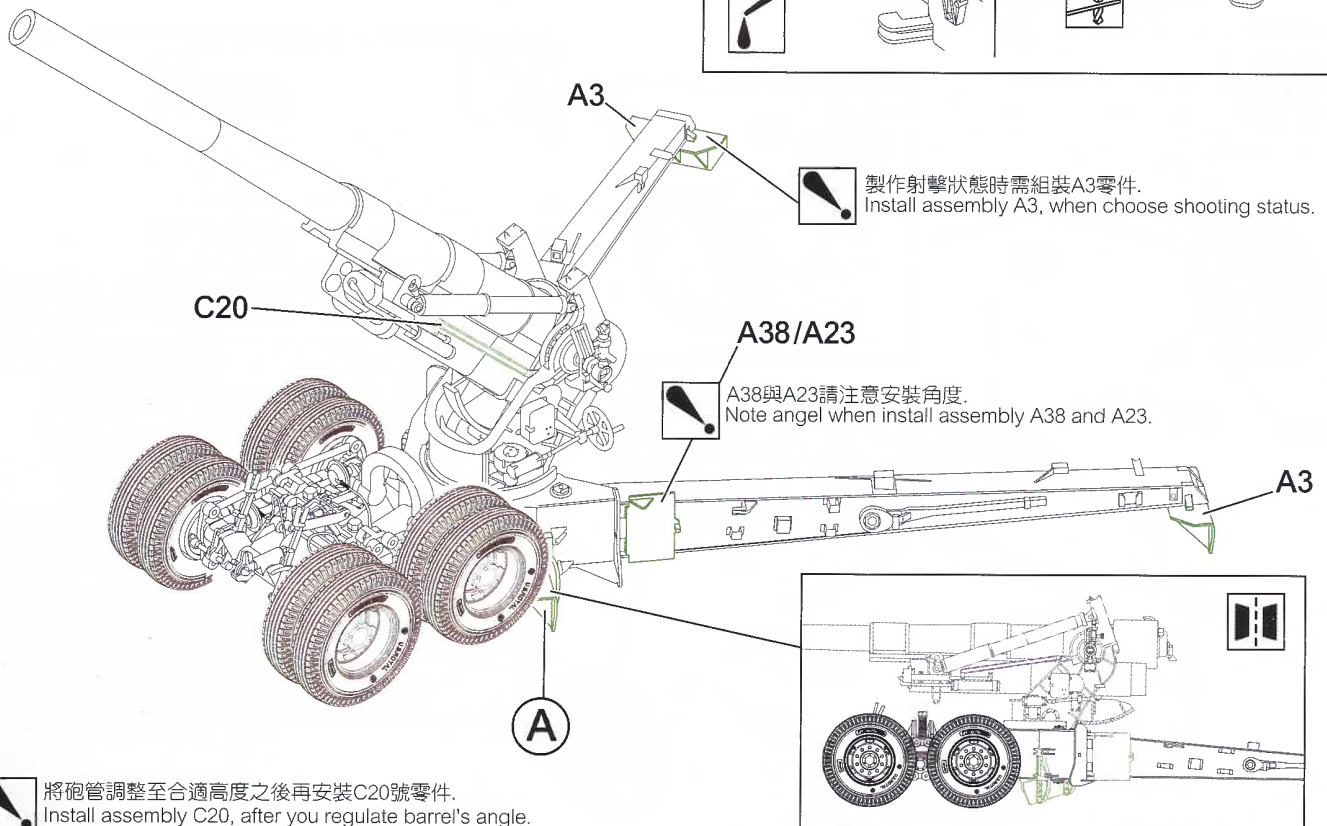
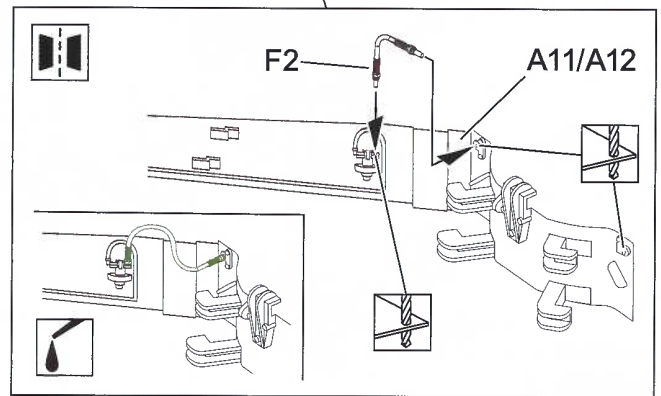
 請將E45零件以上下對稱方式組裝於B7,B8上。  
Please assemble E45 parts on B7 and B8 in a symmetrical manner.

# 16



# 17

M1 155mm 榴彈砲 射擊狀態配置.  
155mm Gun M1 shooting status configuration instructions



! 將砲管調整至合適高度之後再安裝C20號零件。  
Install assembly C20, after you regulate barrel's angle.

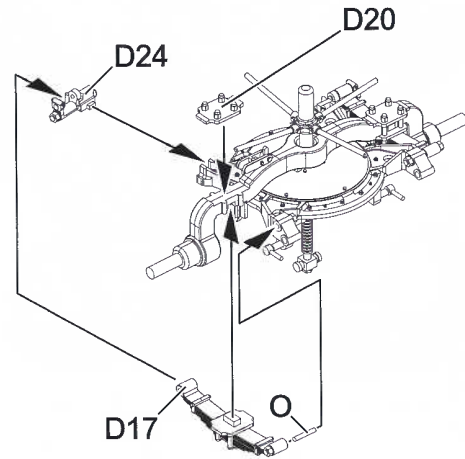
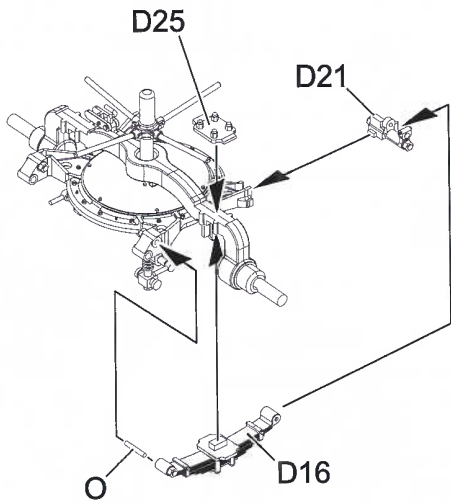
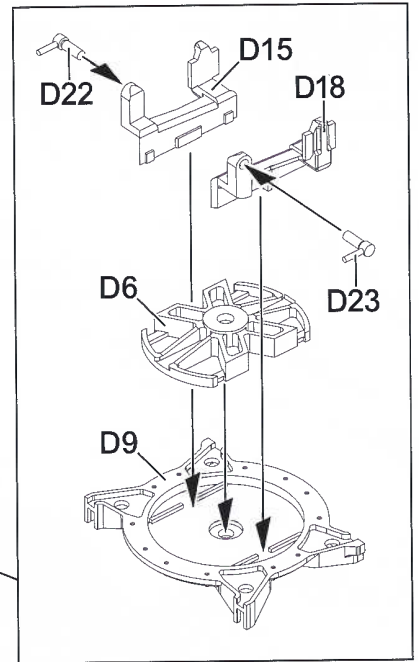
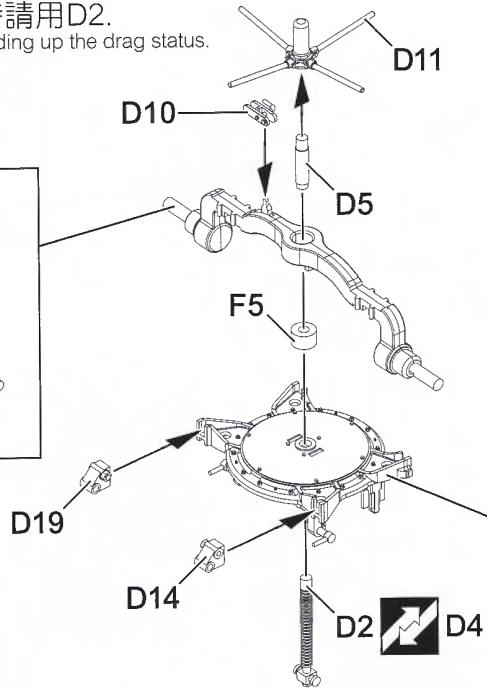
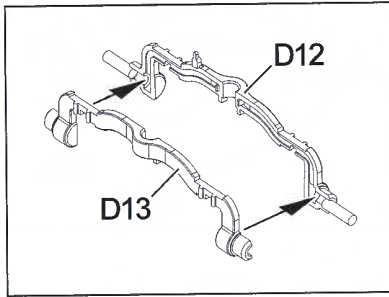
! 製作射擊狀態時需組裝A3零件。  
Install assembly A3, when choose shooting status.

! A38與A23請注意安裝角度。  
Note angel when install assembly A38 and A23.

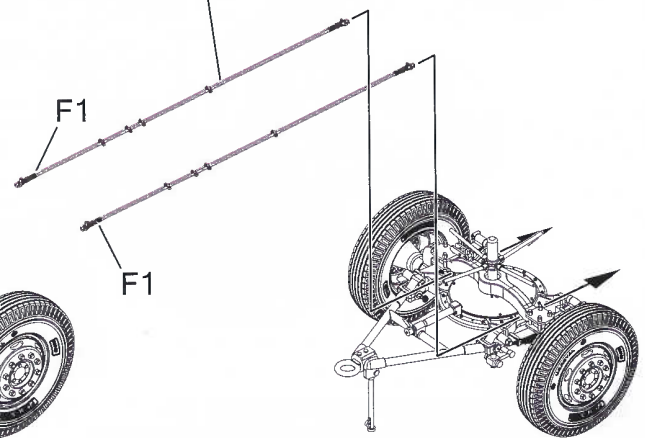
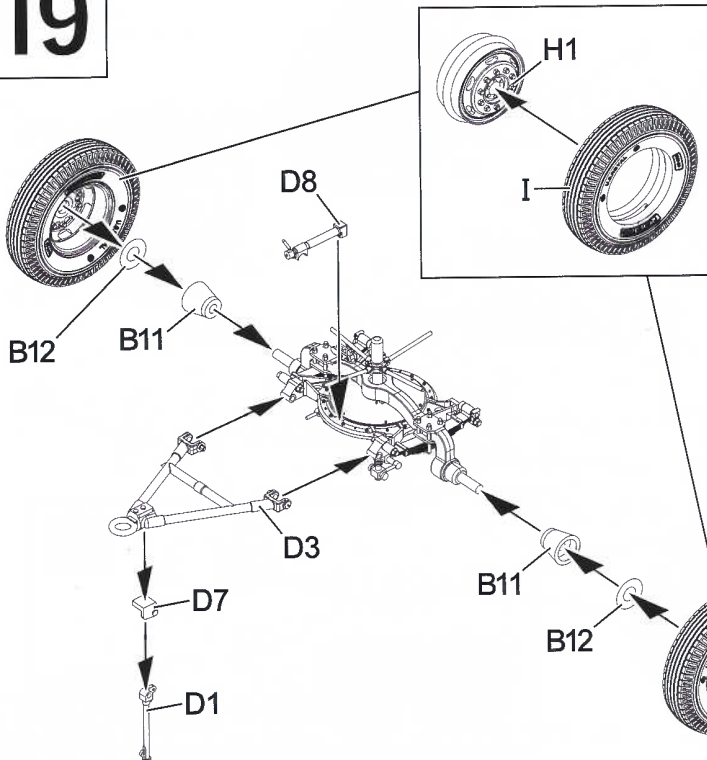
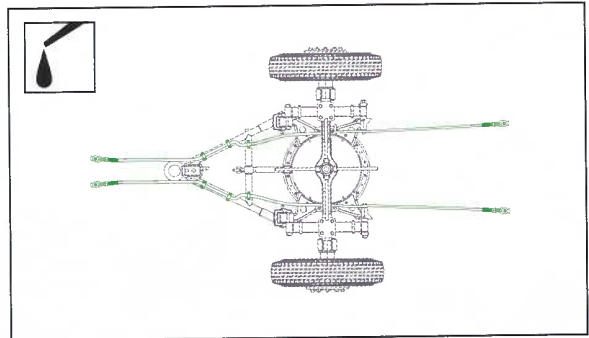
# 18



運輸狀態時請用D2。  
Using D2 to building up the drag status.

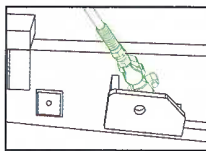
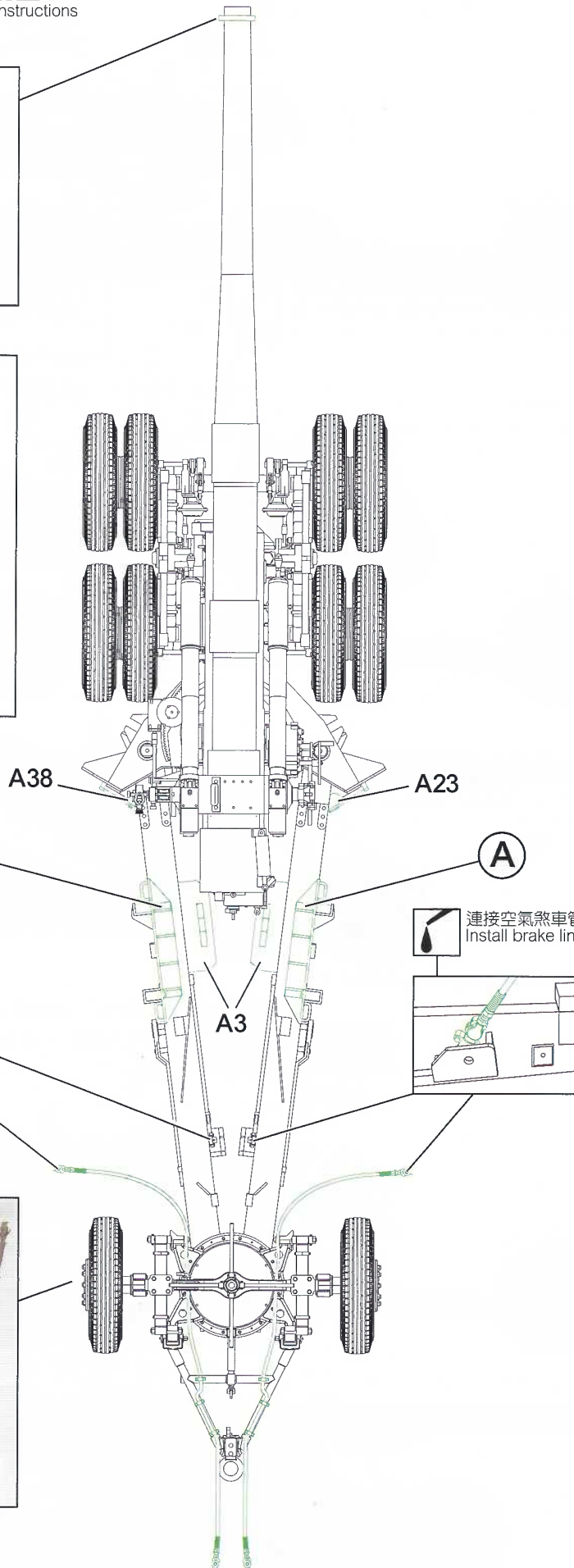
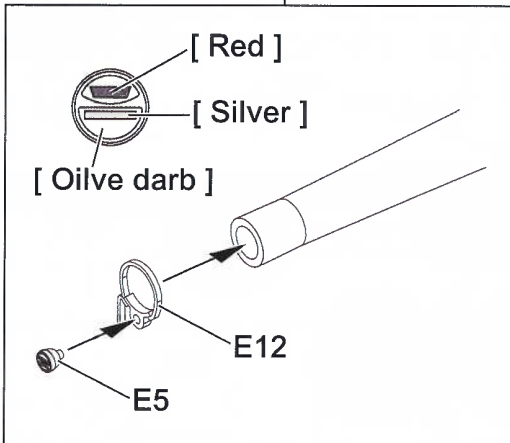
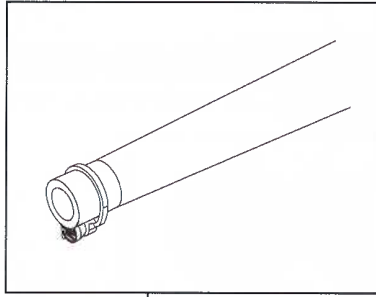


# 19

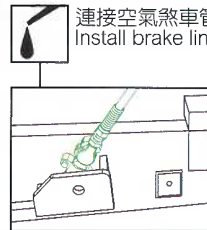


# 20

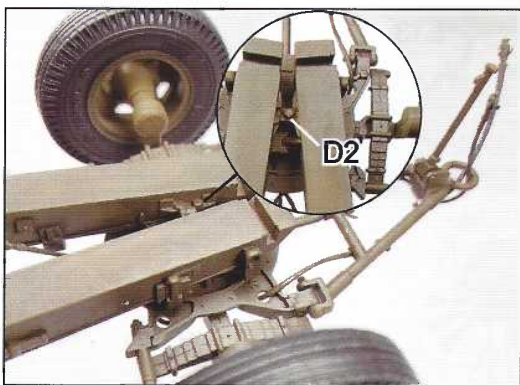
## M1 155mm榴彈砲 運輸狀態配置. 155mm Gun M1 drag status configuration instructions



連接空氣煞車管線。  
Install brake line assembly.

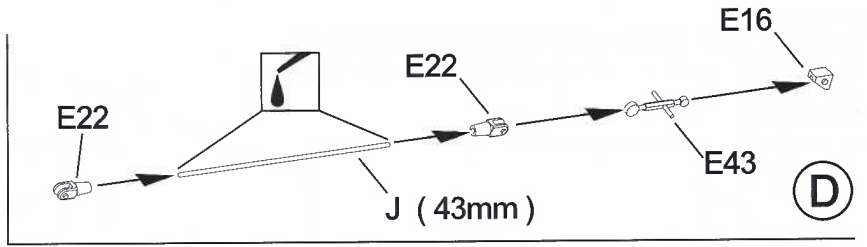


連接空氣煞車管線。  
Install brake line assembly.



A38與A23請注意安裝角度。  
Note angle when install assembly A38 and A23.

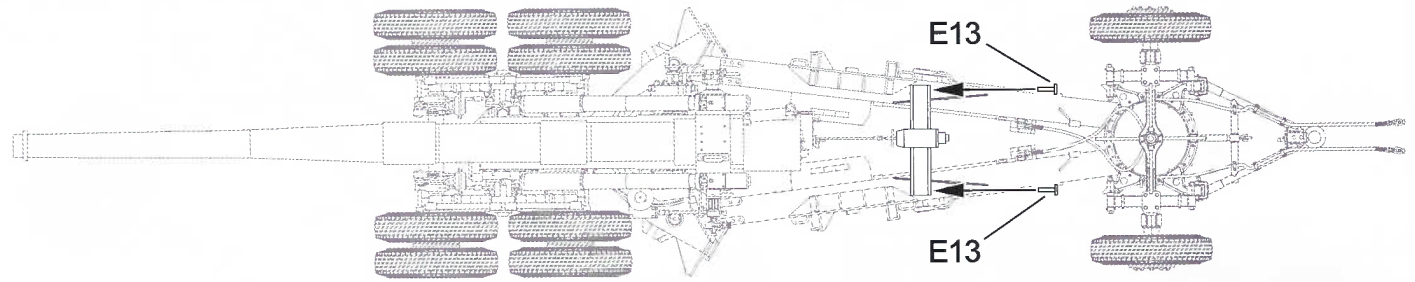
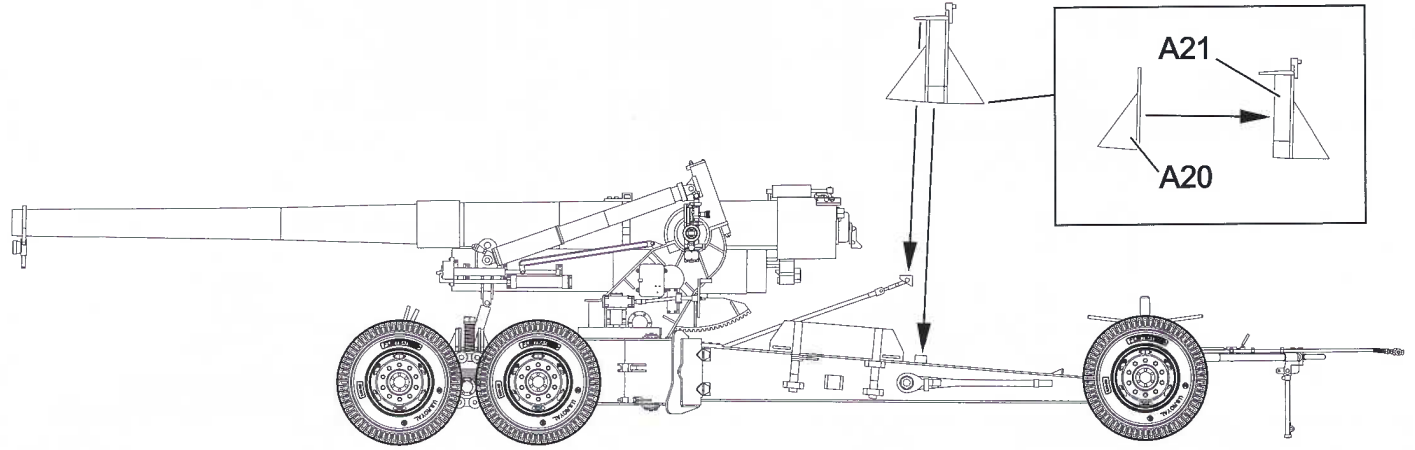
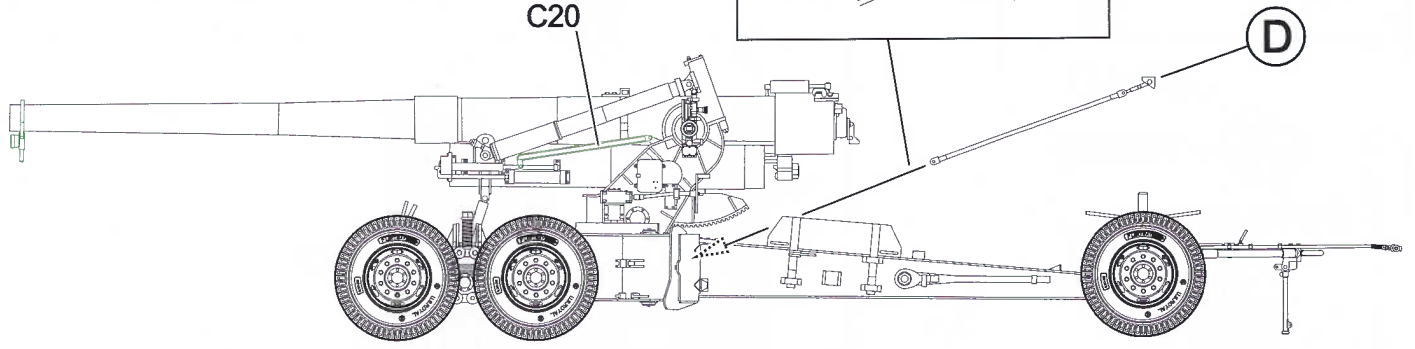
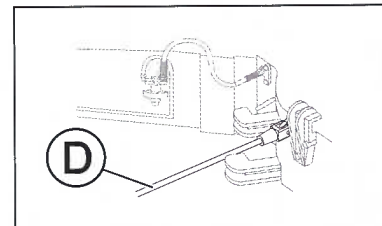
# 21



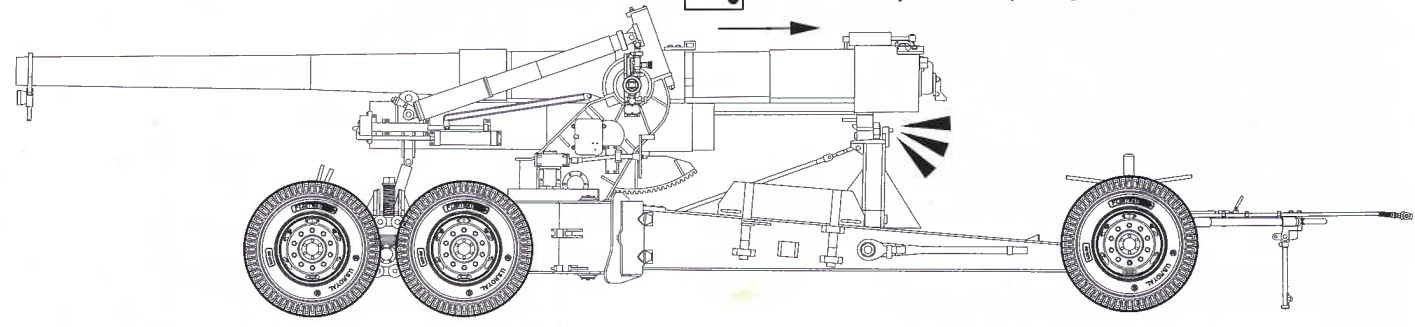
將砲管調整至合適高度之後再安裝。  
Install assembly C20, after you regulate barrel's angle.



C20

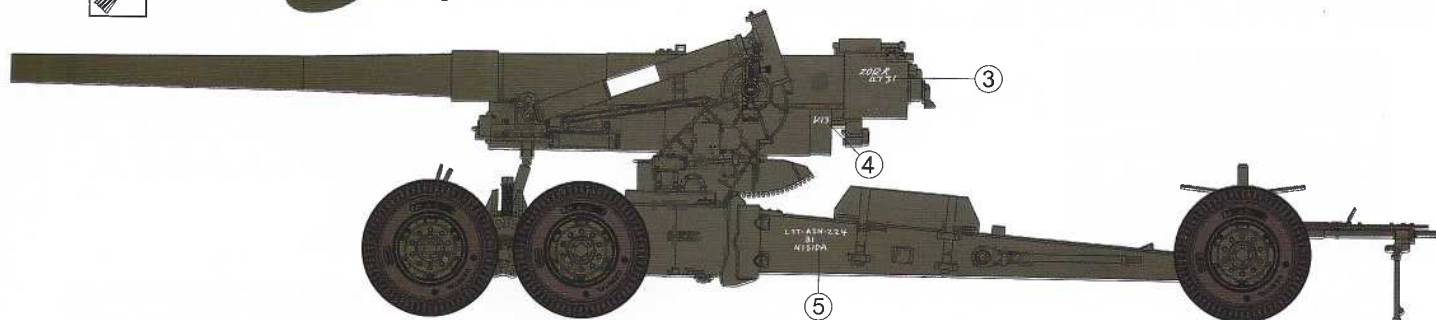


將砲管往後推至固定座。  
Install assembly C20, after you regulate barrel's angle.



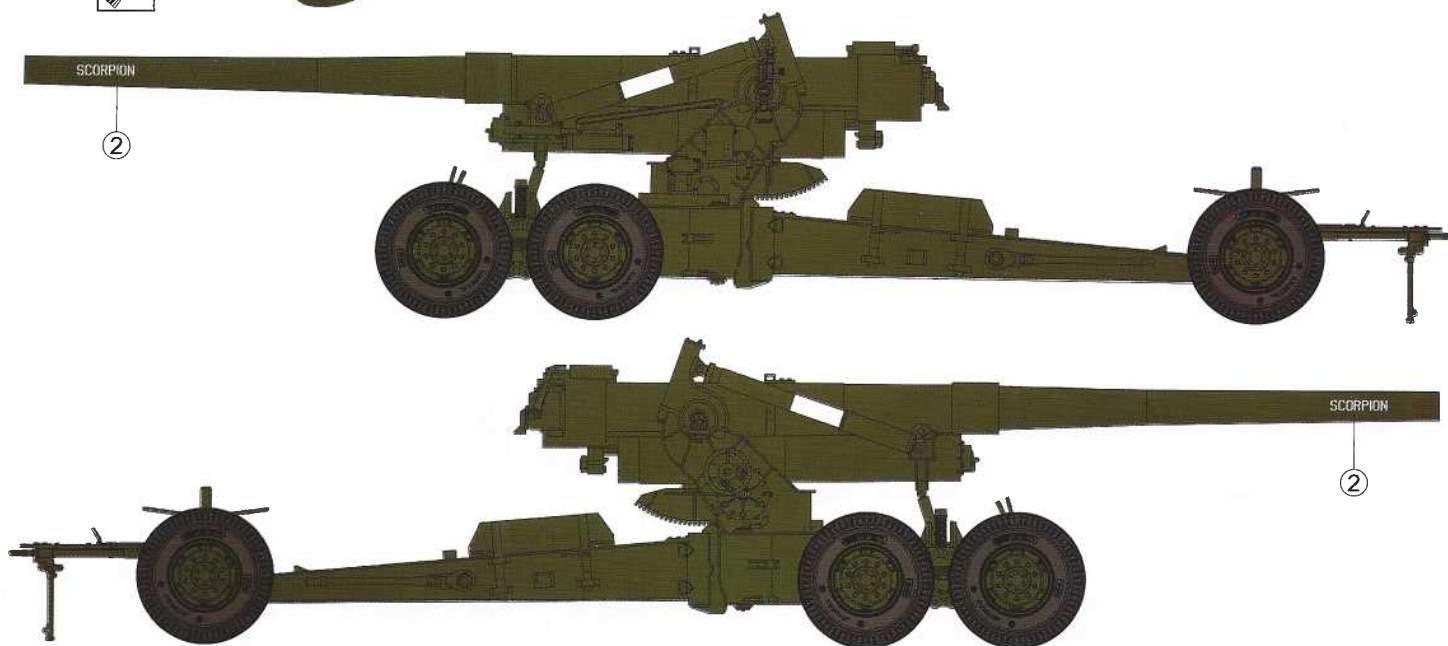
**A** Royal Artillery, July 1944.  
英國皇家砲兵，1944年七月。

Body color :  Dark green No.24 B.S.381



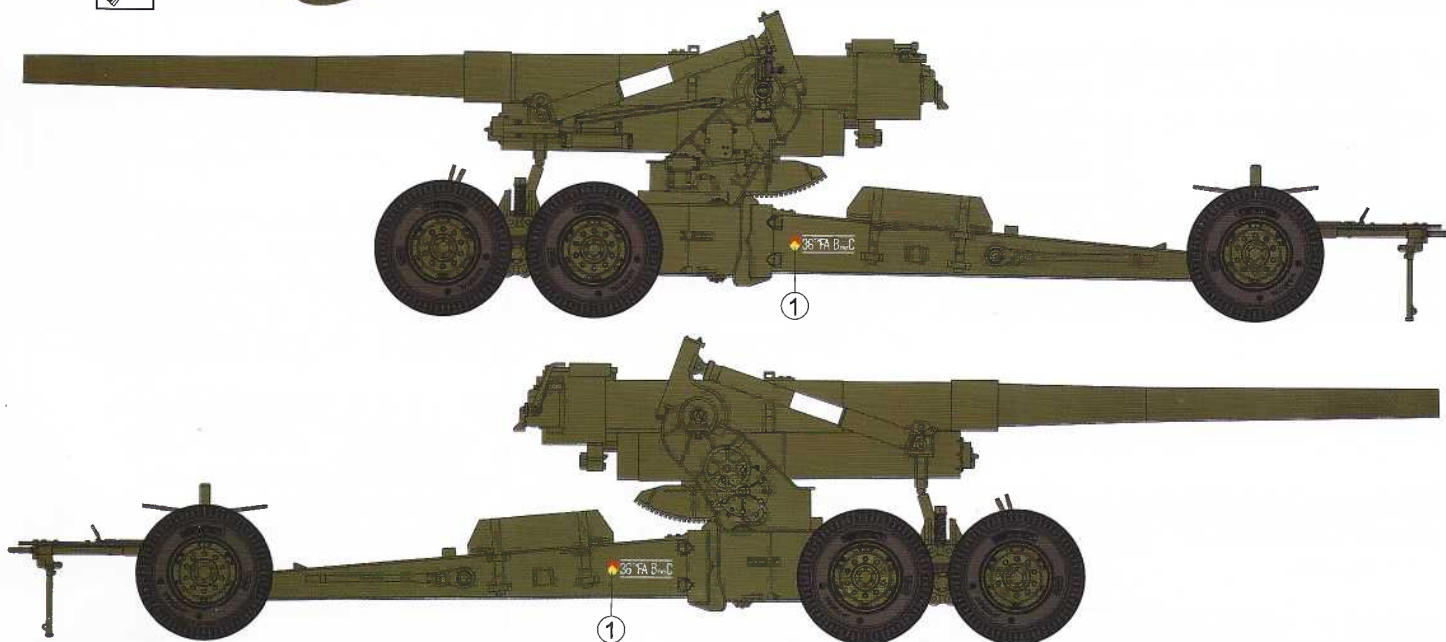
**B** USMC, Vella Lavella, Solomon Islands, August 1943.  
美國海軍陸戰隊，索羅門群島，維拉拉維拉島，1943年八月。

Body color :  Green FS34079



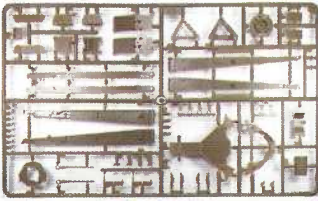
**C** 36th Field Artillery landed, Fort Bragg, North Carolina, spring 1942.  
第36野戰砲兵團，北卡羅來納州布拉格堡，1942年春。

Body color :  Olive drab(1)

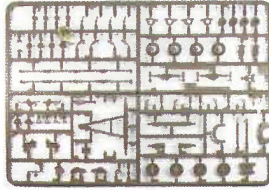


# PARTS LIST 零件表

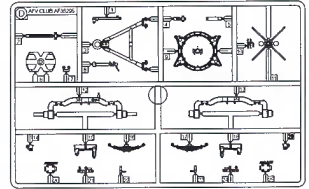
(A) x1 AF35009



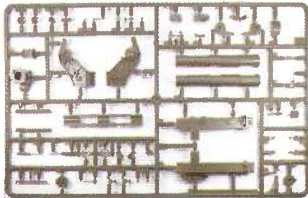
(B) x1 AF35009



(D) x1 AF35295



(C) x1 AF35009



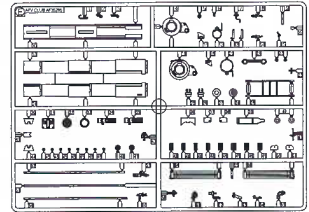
(O) x2 AF35295

(N) x2 AF35295

(M) x2 AF35295



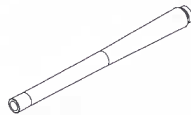
(E) x1 AF35295



(H) x2 AF35295



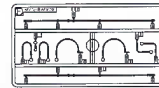
(L) x1 AF35295



(I) x10 AF35295



(F) x1 AF35295



(J) x1 AF35295



## Instructions:

If for some reason, you are not fully satisfied or have questions concerning our product; Please use the form provide, and send it to our nearest representative or mail it directly to our office.

We will deal with that A.S.A.P.

限臺灣地區使用 For Taiwanese use only!

總代理戰鷹企業有限公司收本公司將儘速為您處理。  
請將本表與該部品相同金額之郵政匯票一同寄至。



## AF 35295 Parts Replacement Form

- |                                     |                                     |
|-------------------------------------|-------------------------------------|
| <input type="checkbox"/> AF 35009-A | <input type="checkbox"/> AF 35295-I |
| <input type="checkbox"/> AF 35009-B | <input type="checkbox"/> AF 35295-L |
| <input type="checkbox"/> AF 35009-C | <input type="checkbox"/> AF 35295-M |
| <input type="checkbox"/> AF 35295-D | <input type="checkbox"/> AF 35295-N |
| <input type="checkbox"/> AF 35295-E | <input type="checkbox"/> AF 35295-O |
| <input type="checkbox"/> AF 35295-F | <input type="checkbox"/> AF 35295-J |
| <input type="checkbox"/> AF 35295-H |                                     |

Reason for replacement:  Missing  
 Broken

Signature: \_\_\_\_\_



## AF 35295 零件補充申請表

申請人  
姓名 地址 電話

- |                                     |       |          |
|-------------------------------------|-------|----------|
| <input type="checkbox"/> AF 35009-A | _____ | NT\$ 180 |
| <input type="checkbox"/> AF 35009-B | _____ | NT\$ 180 |
| <input type="checkbox"/> AF 35009-C | _____ | NT\$ 180 |
| <input type="checkbox"/> AF 35295-D | _____ | NT\$ 280 |
| <input type="checkbox"/> AF 35295-E | _____ | NT\$ 300 |
| <input type="checkbox"/> AF 35295-F | _____ | NT\$ 160 |
| <input type="checkbox"/> AF 35295-H | _____ | NT\$ 180 |
| <input type="checkbox"/> AF 35295-I | _____ | NT\$ 300 |
| <input type="checkbox"/> AF 35295-L | _____ | NT\$ 200 |
| <input type="checkbox"/> AF 35295-M | _____ | NT\$ 100 |
| <input type="checkbox"/> AF 35295-N | _____ | NT\$ 100 |
| <input type="checkbox"/> AF 35295-O | _____ | NT\$ 60  |
| <input type="checkbox"/> AF 35295-J | _____ | NT\$ 160 |

+郵寄費 \_\_\_\_\_ NT\$ 80

(請填)總計NT\$ \_\_\_\_\_

零件補充原因:(請於  打 )

原包裝即  遺失或  毀損,

製作途中  遺失或  毀損,

其他原因 \_\_\_\_\_