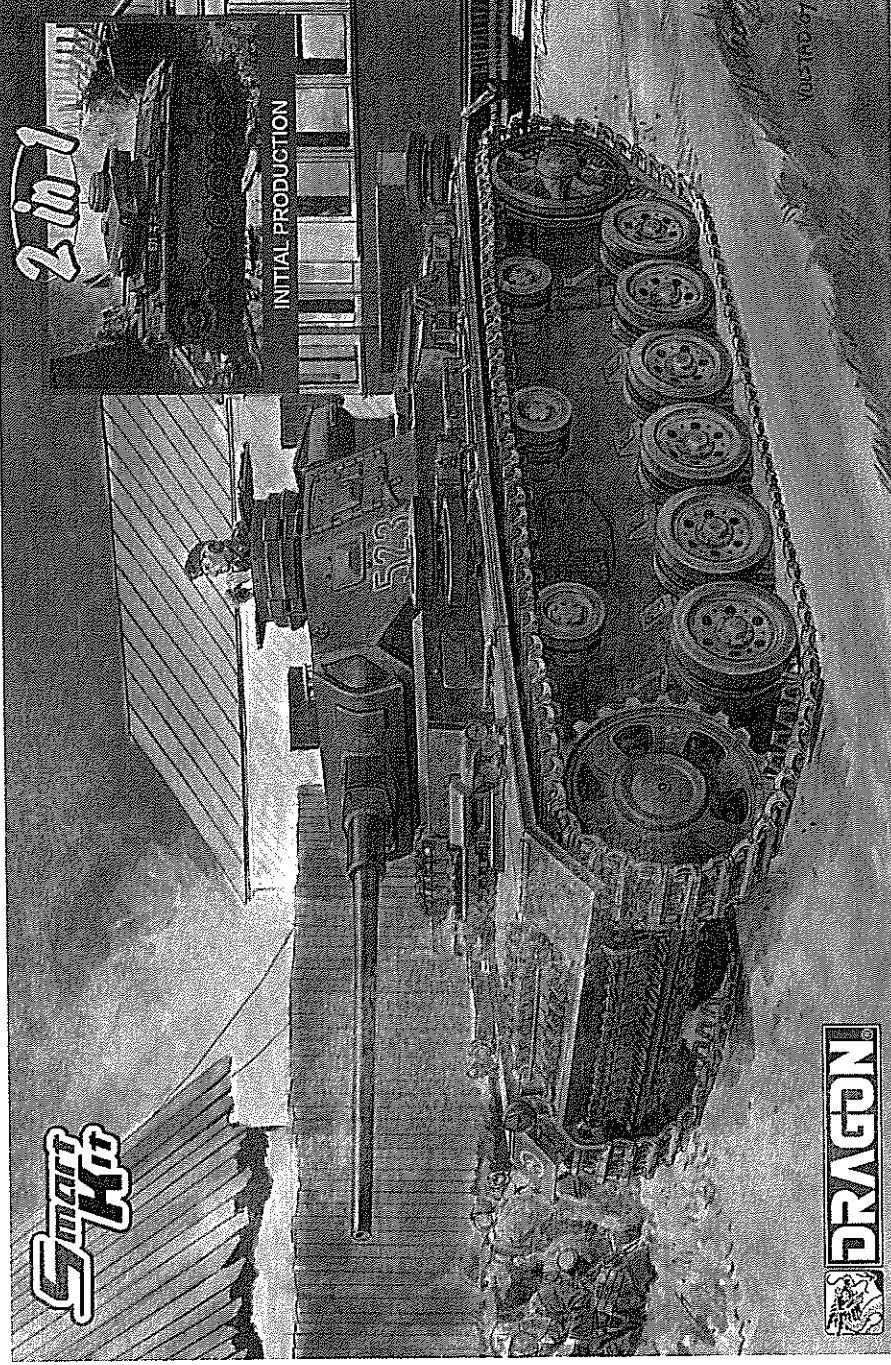


1:35 '39-'45 SERIES

Pz.Kpfw.III Ausf.J



DRAGON

KIT NO. 6954

Project supervised by HIROHISA TAKADA. Technical drawings provided by SHIN OKADA and MINORU IGARASHI.
Thanks to TOM COCKLE and GARY EDMUNDSON as Technical Consultants.

AX2

B

C

D

E

F

G

H

I

J

K

L

M

N

O

P

Q

R

S

T

U

V

W

X

Y

Z

AA

AB

AC

AD

AE

AF

AG

AH

AI

AJ

AK

AL

AM

AN

AO

AP

AQ

AR

AS

AT

AU

AV

AW

AX

AY

AZ

BA

BB

BC

BD

BE

BF

BG

BH

BI

BJ

BK

BL

BM

BN

BO

BP

BQ

BR

BS

BT

BU

BV

BW

BX

BY

BZ

CA

CB

CC

CD

CE

CF

CG

CH

CI

CJ

CK

CL

CM

CN

CO

CP

CQ

CR

CS

CT

CU

CV

CW

CX

CY

CZ

DA

DB

DC

DD

DE

DF

DG

DH

DI

DJ

DK

DL

DM

DN

DO

DP

DQ

DR

DS

DT

DU

DV

DW

DX

DY

DZ

EA

EB

EC

ED

EE

EF

EG

EH

EI

EJ

EK

EL

EM

EN

EO

EP

EQ

ER

ES

ET

EU

EV

EW

EX

EY

EZ

FA

FB

FC

FD

FE

FF

FG

FH

FI

FJ

FK

FL

FM

FN

FO

FP

FQ

FR

FS

FT

FU

FV

FW

FX

FY

FZ

GA

GB

GC

GD

GE

GF

GG

GH

GI

GJ

GK

GL

GM

GN

GO

GP

GQ

GR

GS

GT

GU

GV

GW

GX

GY

GZ

HA

HB

HC

HD

HE

HF

HG

HH

HI

HJ

HK

HL

HM

HN

HO

HP

HQ

HR

HS

HT

HU

HV

HW

HX

HY

HZ

IA

IB

IC

ID

IE

IF

IG

IH

II

IJ

IK

IL

IM

IN

IO

IP

IQ

IR

IS

IT

IU

IV

IW

IX

IY

IZ

JA

JB

JC

JD

JE

JF

JG

JH

JI

IJ

JK

IL

JM

JN

JO

JP

JQ

JR

JS

JT

JU

JV

JW

JX

JY

JZ

KA

KB

KC

KD

KE

KF

KG

KH

KI

KJ

KK

KL

KM

KN

KO

KP

KQ

KR

KS

KT

KU

KV

KW

KX

KY

KZ

LA

LB

LC

LD

LE

LF

LG

LH

LI

LJ

LK

LL

LM

LN

LO

LP

LQ

LR

LS

LT

LU

LV

LW

LX

LY

LZ

MA

MB

MC

MD

ME

MF

MG

MH

MI

MJ

MK

ML

MM

MN

MO

MP

MQ

MR

MS

MT

MU

MV

MW

MX

MY

MZ

NA

NB

NC

ND

NE

NF

NG

NH

NI

NJ

NK

NL

NM

NN

NO

NP

NQ

NR

NS

NT

NU

NV

NW

NX

NY

NZ

OA

OB

OC

OD

OE

OF

OG

OH

OI

OJ

OK

OL

OM

ON

OO

OP

OQ

OR

OS

OT

OU

OV

OW

OX

OY

OZ

PA

PB

PC

PD

PE

PF

PG

PH

PI

PJ

PK

PL

PM

PN

PO

PP

PQ

PR

PS

PT

PU

PV

PW

組立ての注意

- ・接着剤や塗料は火の近くで使わないでください。使う時は必ず火気のない場所で換気をよくしてください。
- ・塗料指定の色は GSI CREOS CORP. MR. カラーの番号です。
- ・接着剤や塗料が入っていない部分のみに塗料を塗ってください。
- ・部品を溶かすカッターやヤスリ等で仕上げてください。
- ・組立図のラインマークは下の説明を必ず読んでください。

《注意》

- ・勿論近火感使用用塗料を油塗、並打閉戸保持空気流通。
- ・代表 GSI CREOS CORP. 出品 MR. COLOR 的顔色編號。
- ・不要塗料を除去し、並打閉戸保持空気流通。
- ・自膠袋中取出部品時、誤用模型専用剪、並用刃刀或小鋸除去多餘的部材。
- ・各圖型的含蓋可參考本欄以下的說明。

- X2** 2つずつしてください
MAKE 2x
REMOUE 2x
RETRACTER 2x
FARE DUE PEZZI 2x
TEE 2x
POLY 2x
切戻してください
REMOVE 2x
RETRACTER 2x
FARE DUE PEZZI 2x
TEE 2x
POLY 2x
- X** 取外してください
REMOVE
RETRACTER
FARE DUE PEZZI
TEE
POLY
- A** 注してください
OPEN
FARE UNTRON
USARE ATTENZIONE
FORNITIT
小心取
取外してください
REMOVE
RETRACTER
FARE DUE PEZZI
TEE
POLY

ZUR BEACHTUNG

- ・Kleber und Farbe nicht nahe von offenem Feuer verwenden und die Fenster vom Zeit zu Zeit zu öffnen.
- ・GSI CREOS CORP. MR. COLOR, Kleber und Farbe sind nicht entfehlen.
- ・Zum Abschmelzen der Teile vom Verbundstück eine Modellierschere verwenden und die überstehenden Plastikteile mit einem Messer oder einer Feile beseitigen.
- ・Die Bedeutung der Symbols finden Sie unten in dieser Spalte.

CAUTION

- ・When you use glue or paint, do not use near a naked flame, and use in a well-ventilated room.
- ・Symbols such as refer to the color number of GSI CREOS CORP. MR. COLOR. Glue and paint are not included.
- ・When you take parts of the runner frame, use modeling scissors and trim excess plastic with a cutter or a file.
- ・See below for the meaning of symbols.

- X2** 2つずつしてください
MAKE 2x
REMOUE 2x
RETRACTER 2x
FARE DUE PEZZI 2x
TEE 2x
POLY 2x
- X** 取外してください
REMOVE
RETRACTER
FARE DUE PEZZI
TEE
POLY
- A** 注してください
OPEN
FARE UNTRON
USARE ATTENZIONE
FORNITIT
小心取
取外してください
REMOVE
RETRACTER
FARE DUE PEZZI
TEE
POLY

ATTENTION

- ・Ne pas utiliser de colle ou de peinture a proximite d'une flamme nue, et aérer la pièce de temps en temps.
- ・Le numéro pour l'indication de couleurs correspond au numéro de GSI CREOS CORP. MR. COLOR. La colle et la peinture ne sont pas comprises.
- ・Pour retirer les pièces hors du cadre, utiliser des ciseaux et éliminer la plastique en excès avec un couteau ou une lime.
- ・Voir la fin de cette colonne pour la signification des symboles

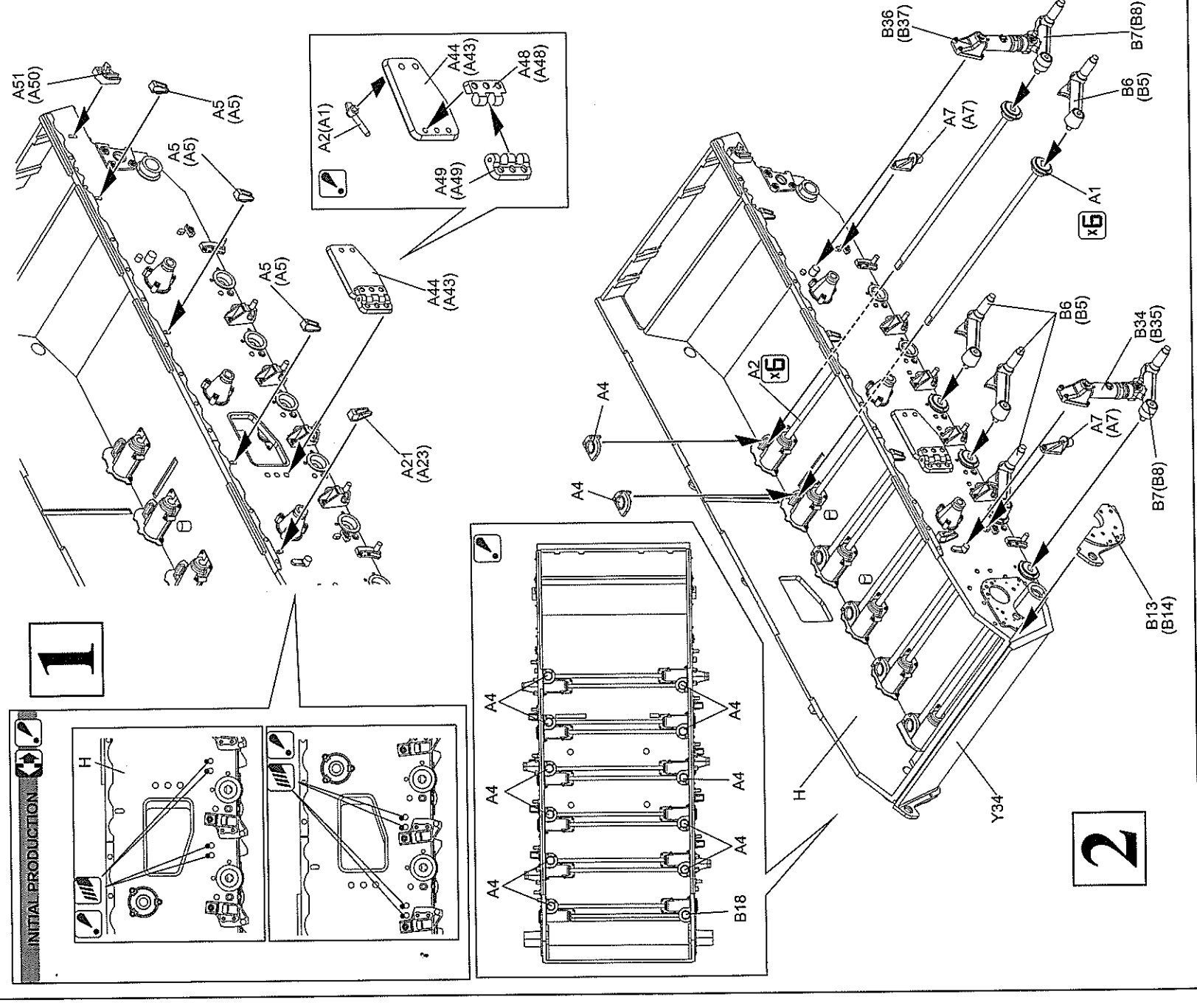
ATTENZIONE

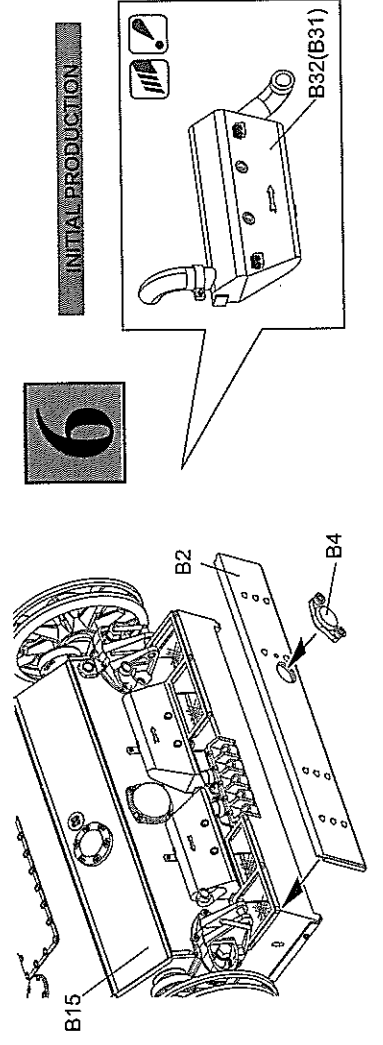
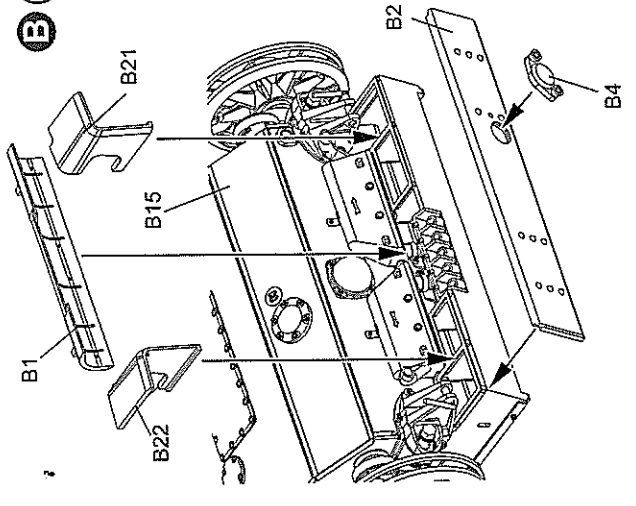
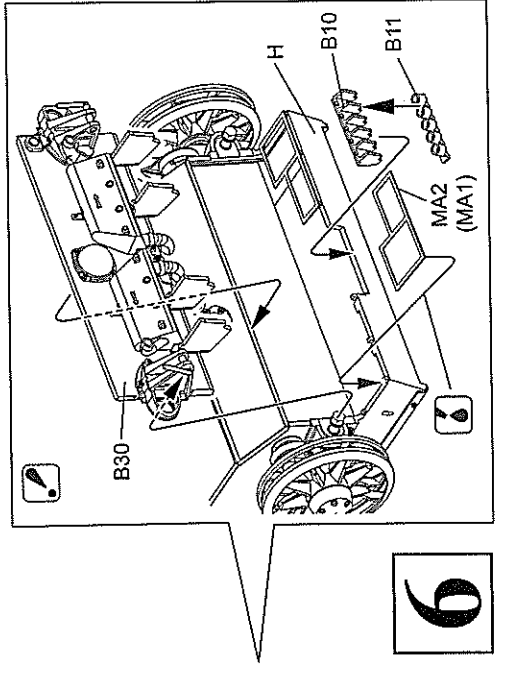
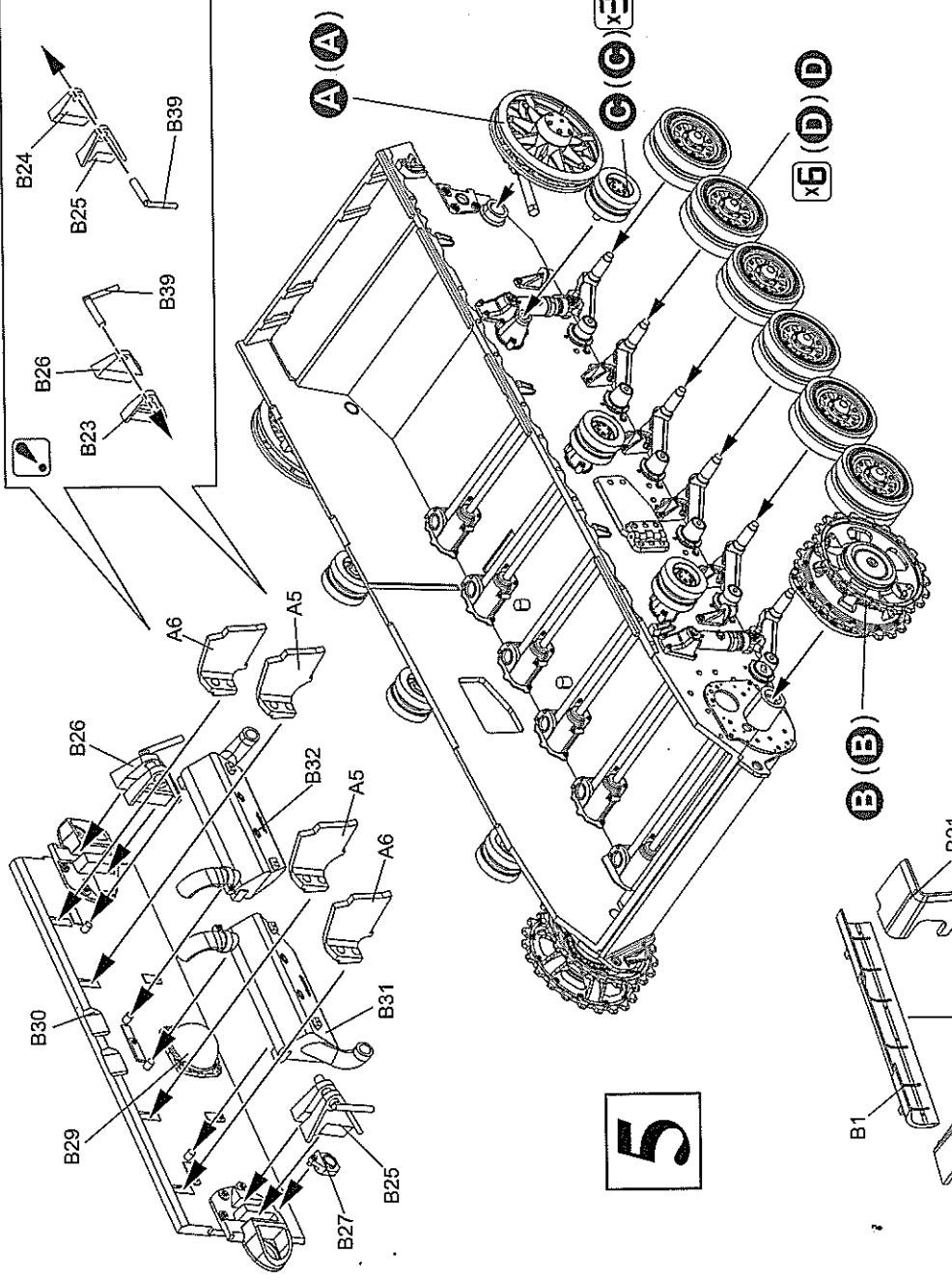
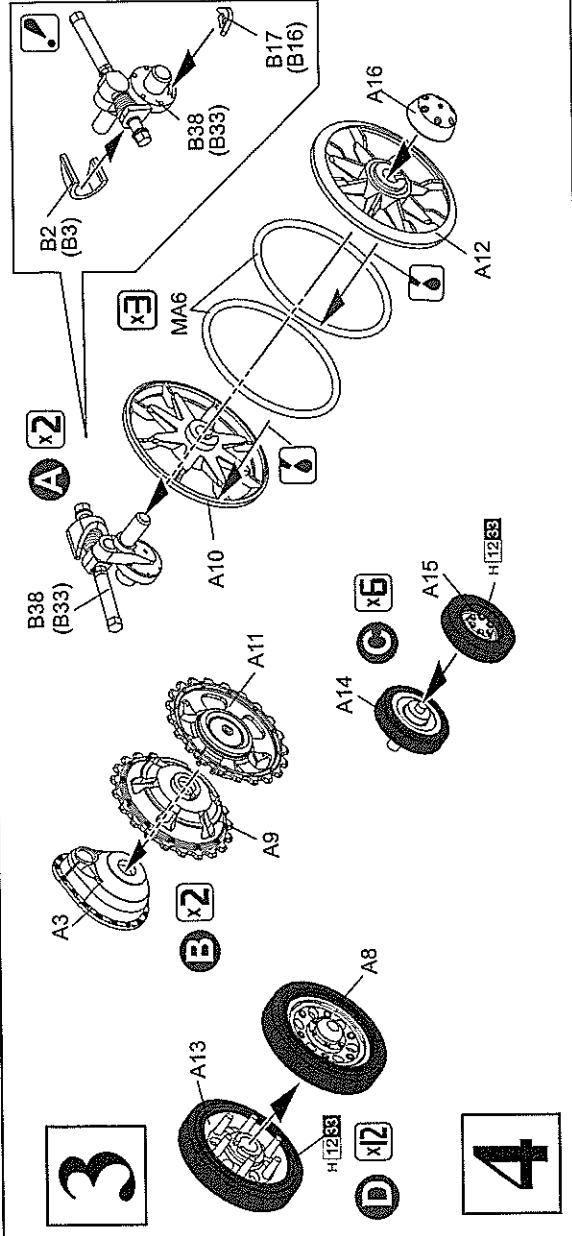
- ・Non usare colla o vernice vicino a fiamme esposte, e aprire le finestre di tanto in tanto per cambiare l'aria.
- ・Le delle indicazioni di colore si riferisce al numero di colore di GSI CREOS CORP. MR. COLOR. Colla e vernice non sono inclusi.
- ・Quando si staccano parti del carrello, usare forbici da modellismo e eliminare la plastica in eccesso con un coltello o una lima.
- ・Vedere in fondo a questa colonna per il significato dei simboli.

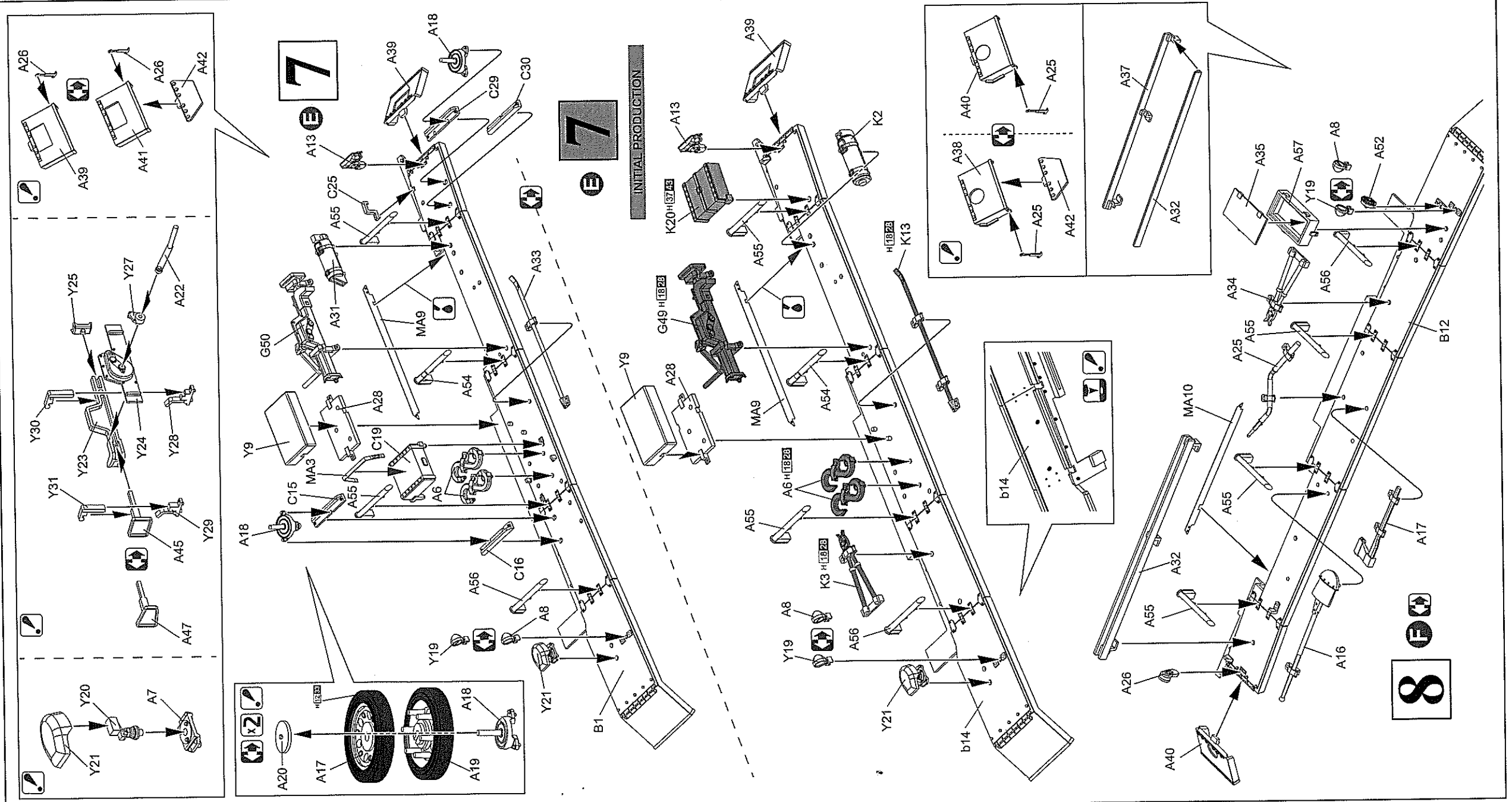
- X2** 2つずつしてください
MAKE 2x
REMOUE 2x
RETRACTER 2x
FARE DUE PEZZI 2x
TEE 2x
POLY 2x
- X** 取外してください
REMOVE
RETRACTER
FARE DUE PEZZI
TEE
POLY
- A** 注してください
OPEN
FARE UNTRON
USARE ATTENZIONE
FORNITIT
小心取
取外してください
REMOVE
RETRACTER
FARE DUE PEZZI
TEE
POLY

H1 GSI CREOS HOBBY COLOUR MODEL MASTER COLOUR

色名	ブラック	シュwarz	NOIR	NERO	黒色
H101	つや消しホワイト	MATTWEISS	BLANC MAT	BLANCO OPACO	哑白色
H102	つや消しブラック	MATTSCHWARZ	NOIR MAT	NERO OPACO	哑黑色
H103	黒鐵色	STAHL	ACIER	ACCIAIO	黒鐵色
H104	ウッドブラウン	HOLZBARAUN	BRUN BOIS	MARRONE LEGNO	木棕色
H105	タークグレー(1)	FELD GRAU(1)	GRIS DES TROUPES ALLEMANDES(1)	GRIGIO CAMPO	田灰色
H106	RLMサンディブラウン79	RLM SAND GELB 79	RLM BRUN SANDLE 79	SABBIA RLM 79	RLM砂褐色79
H107	焼鐵色	GEBR. EISEN	FER BRULE	FERRO BRUCIATO	燒鐵色
H108	タークイエロー	DUNKEL GELB	JAUNÉ FONCÉ	GIALLO SCURO	暗黄色

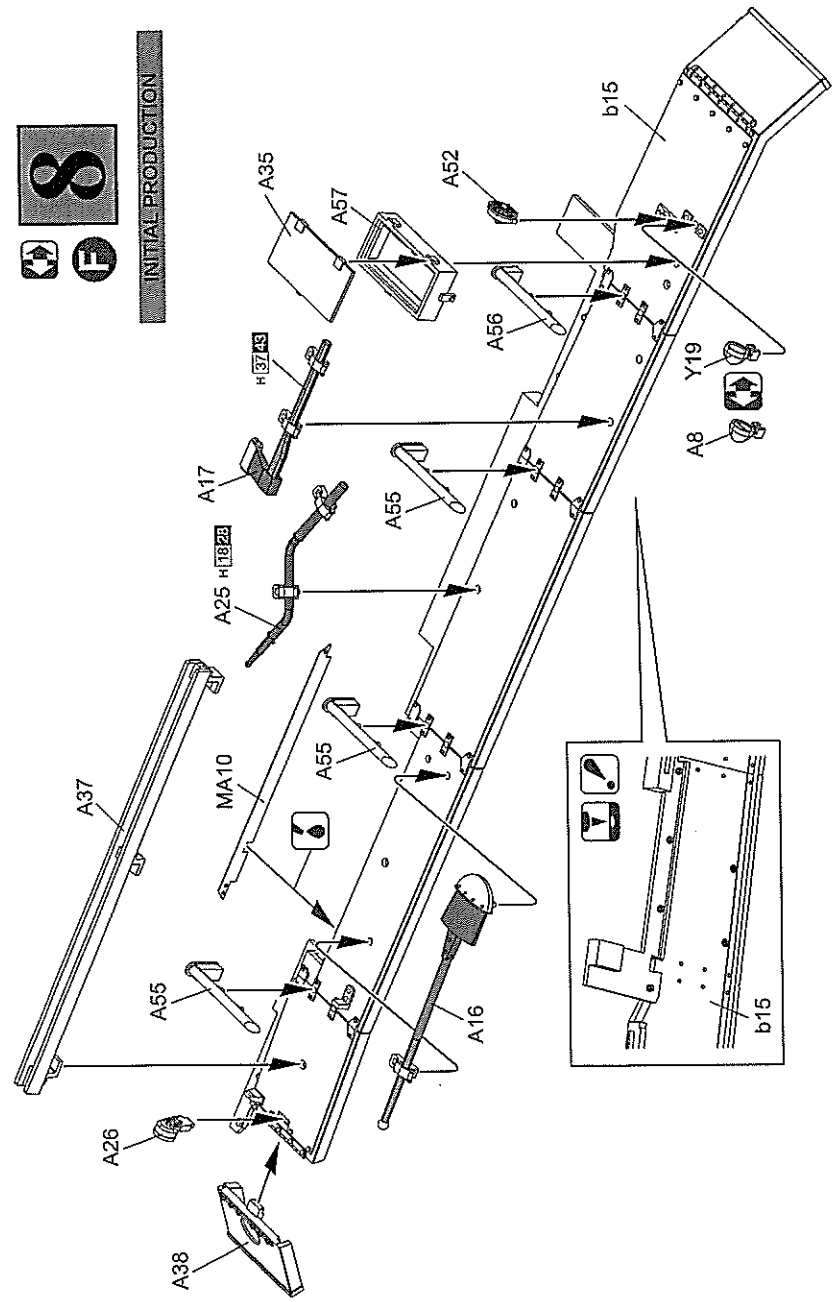




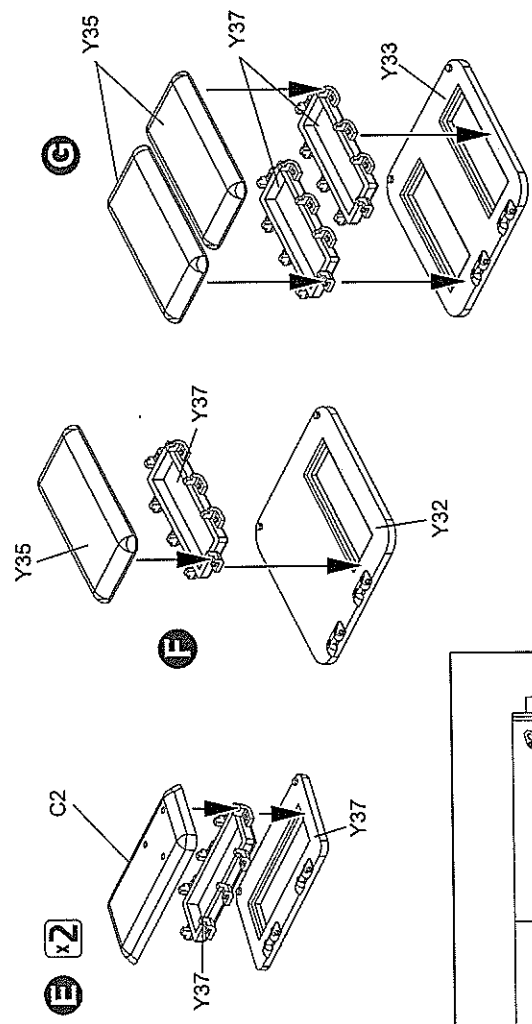


8

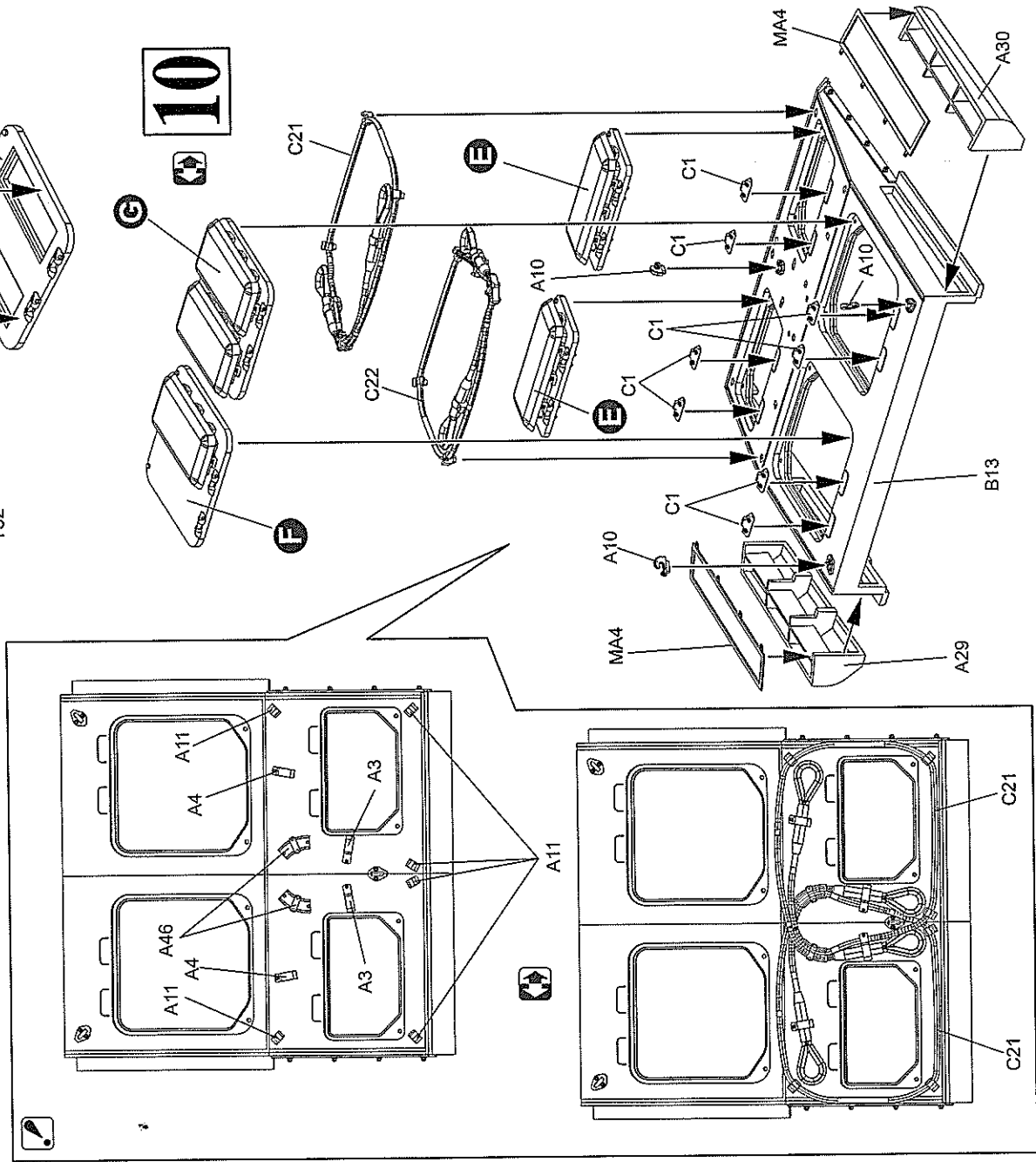
INITIAL PRODUCTION



9

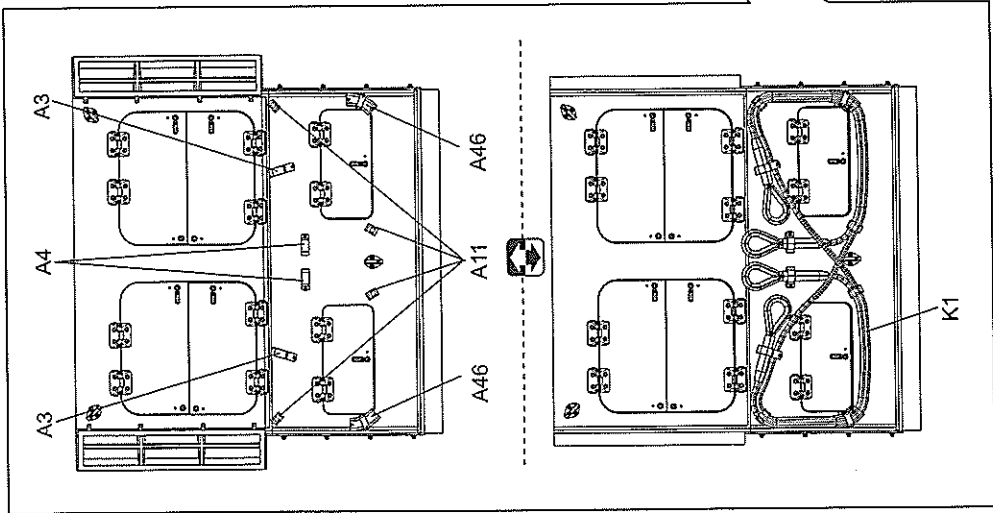
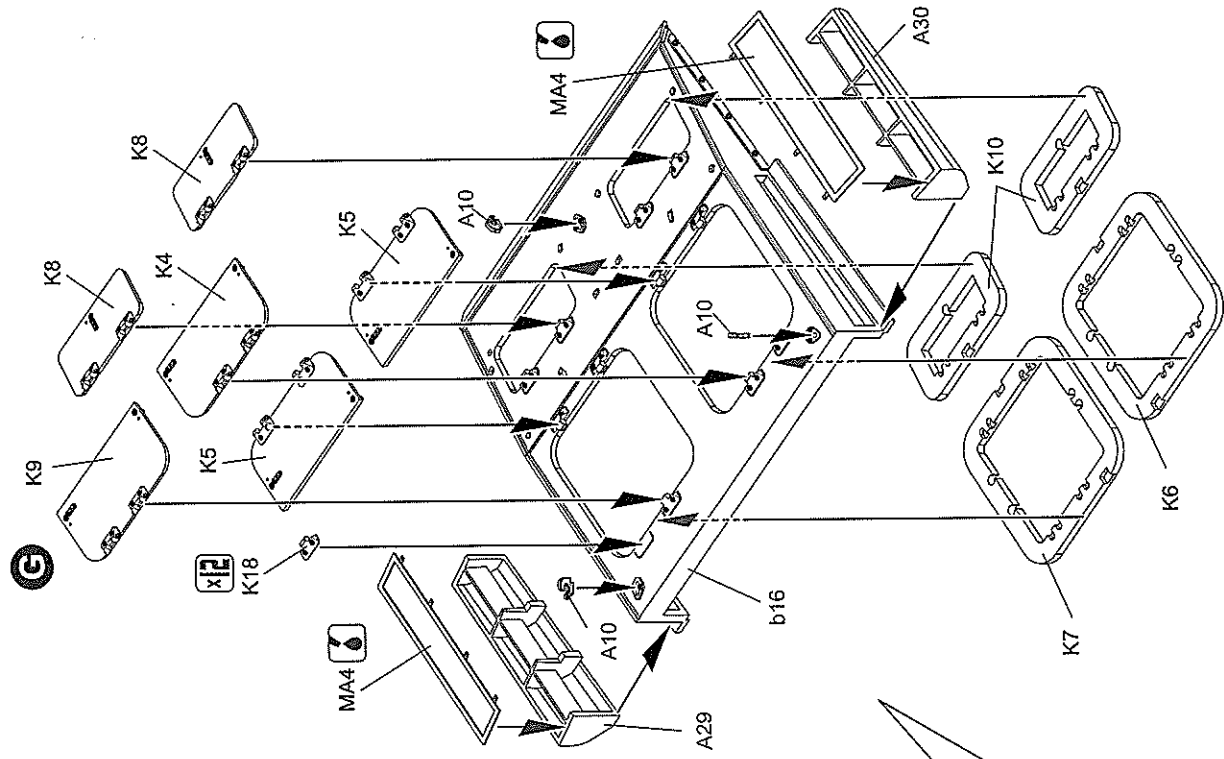


10



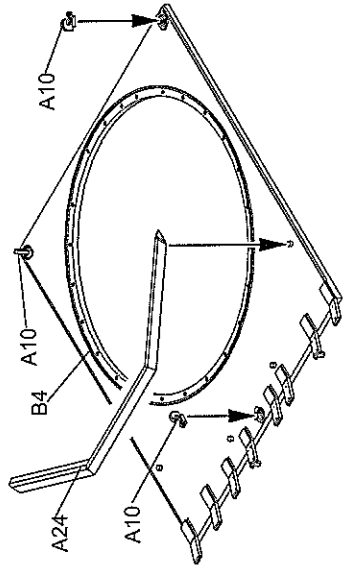
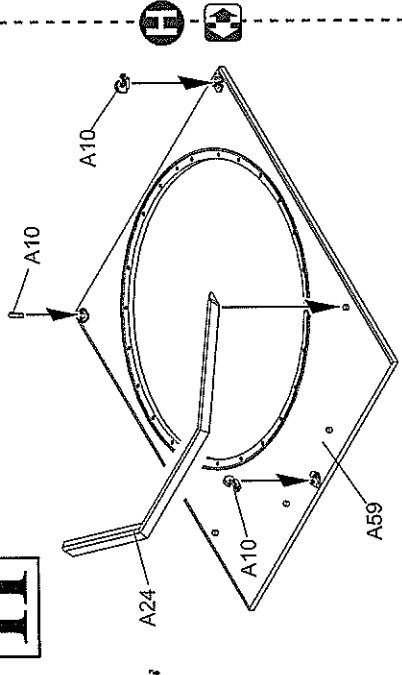
10

INITIAL PRODUCTION

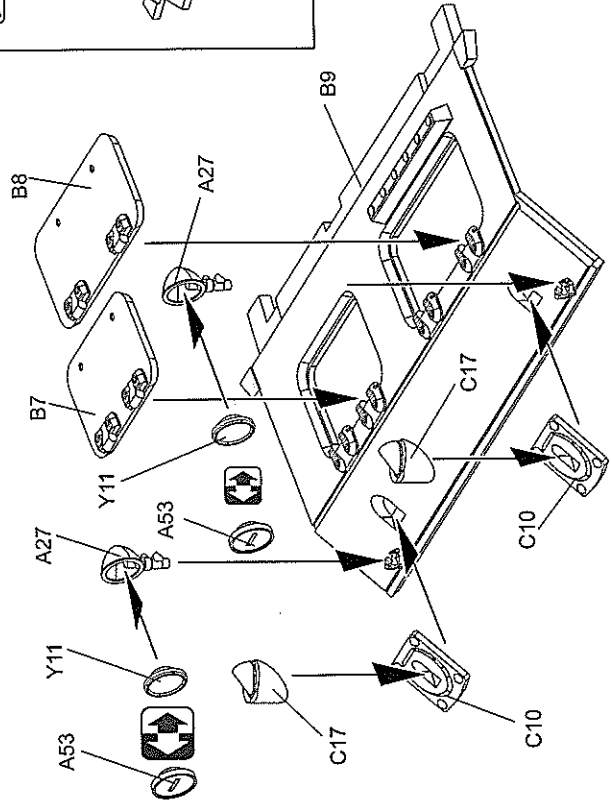


11

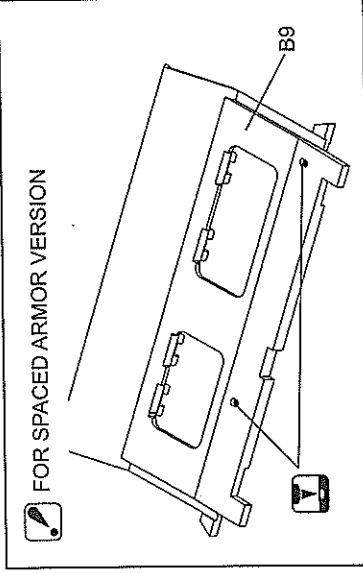
FOR SPACED ARMOR VERSION



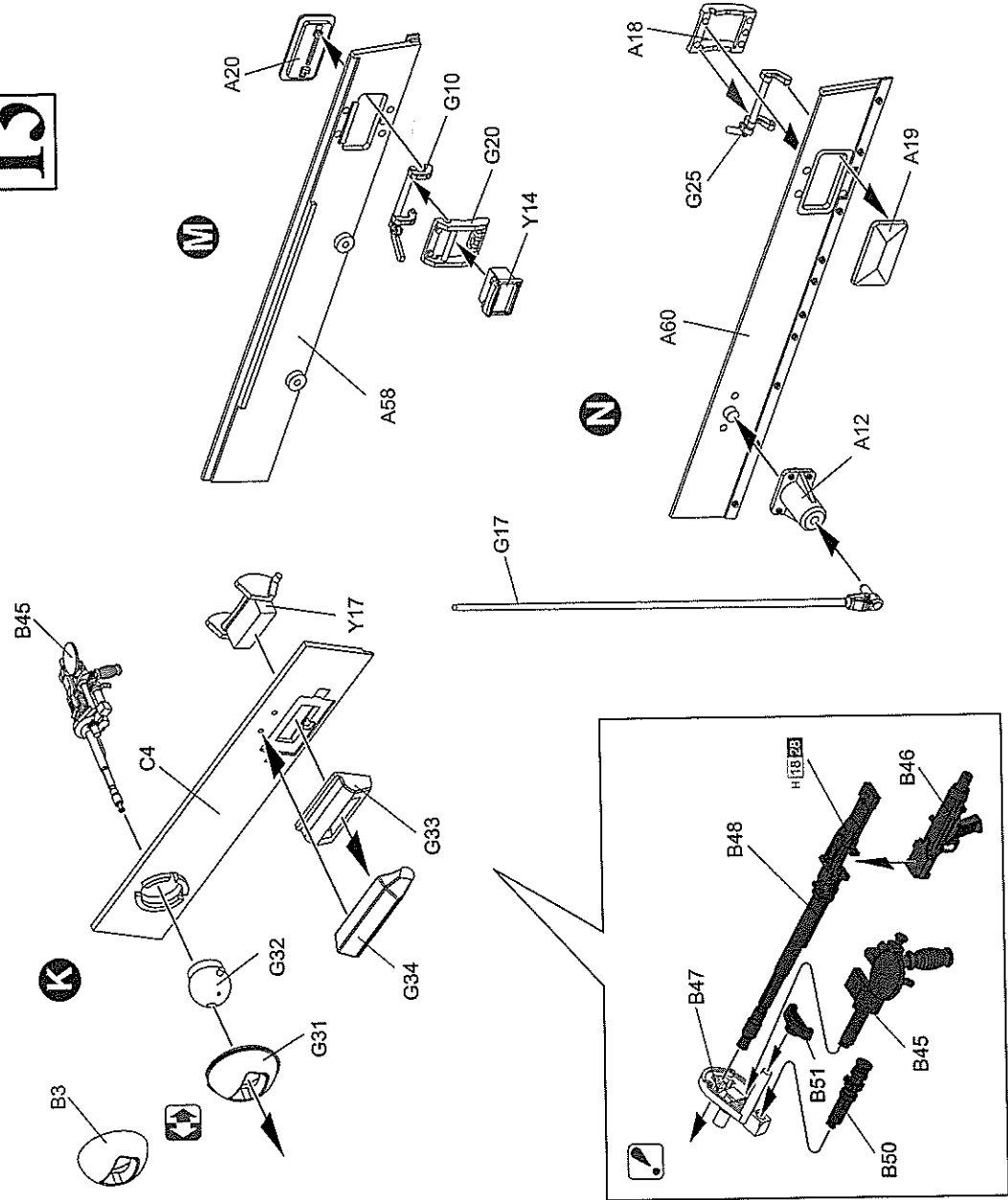
FOR SPACED ARMOR VERSION



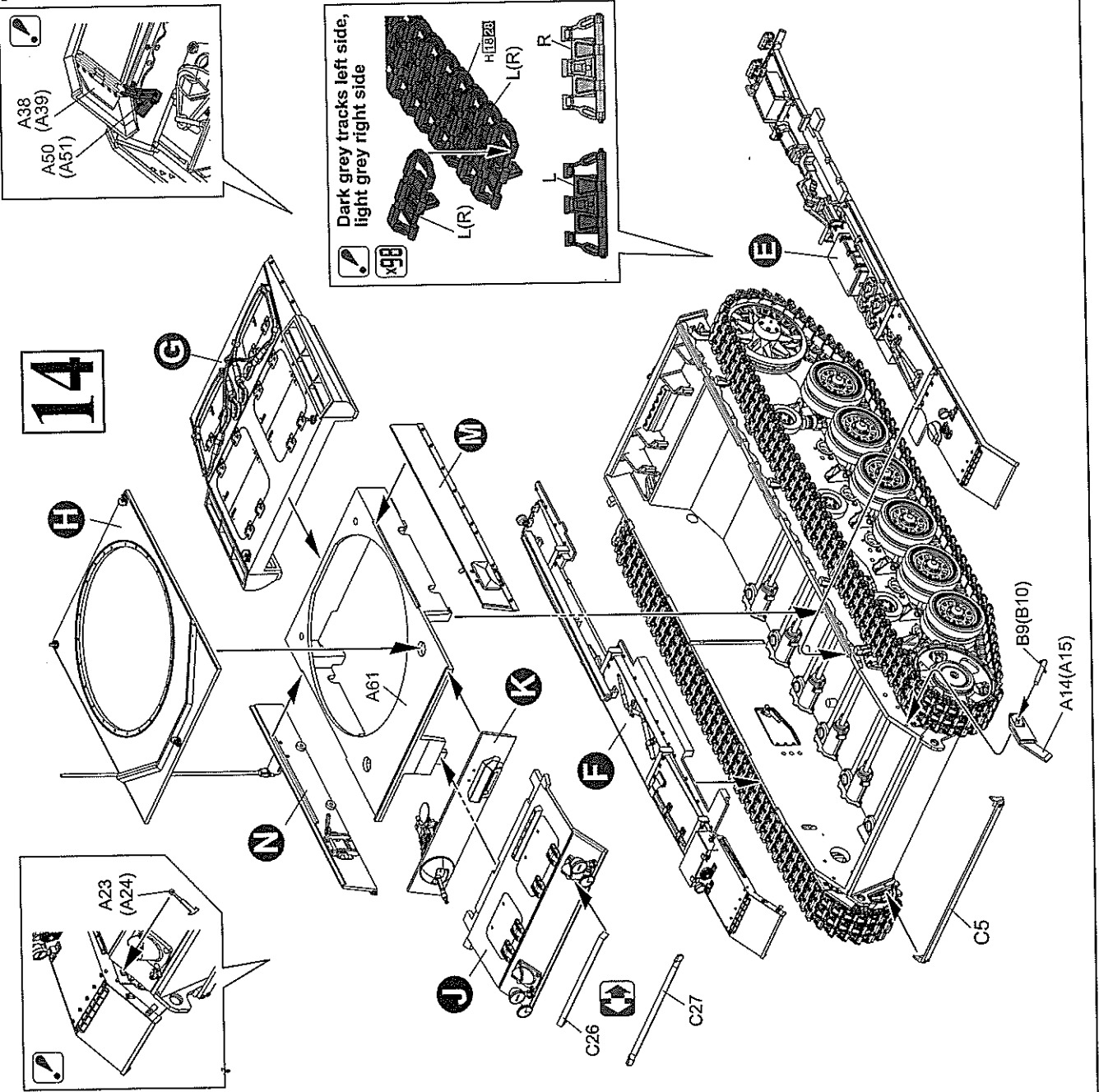
12



13

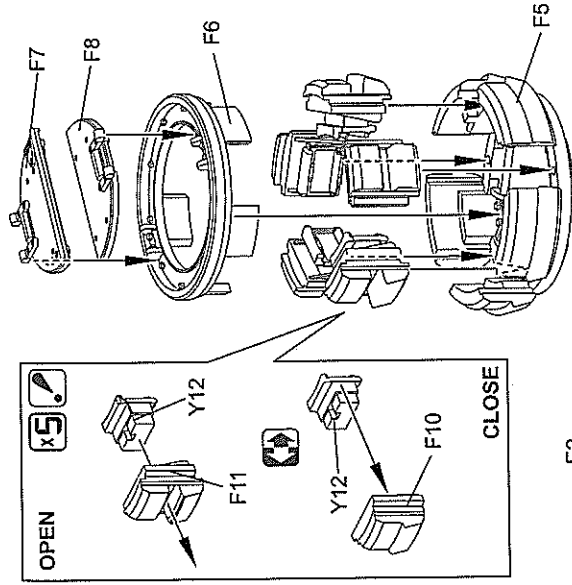
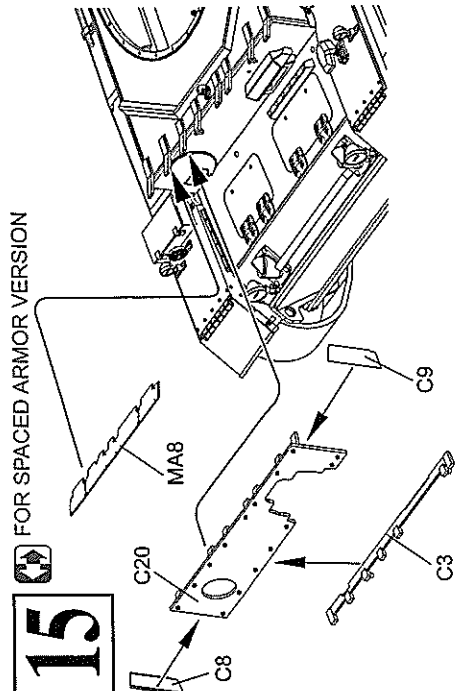


14



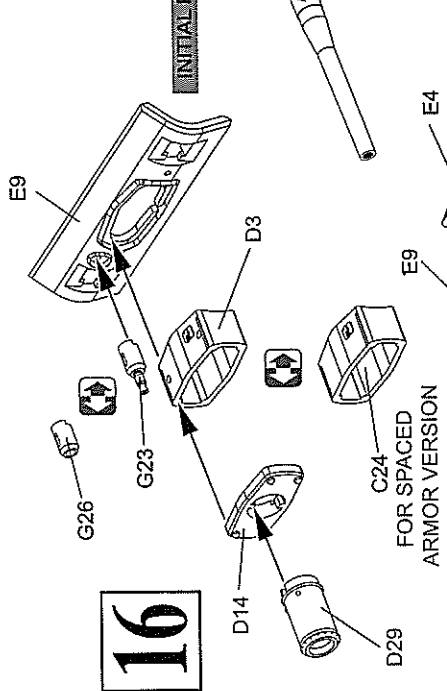
15

FOR SPACED ARMOR VERSION



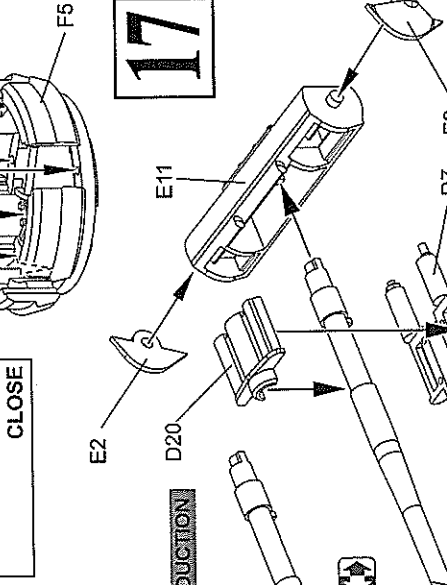
16

FOR SPACED ARMOR VERSION



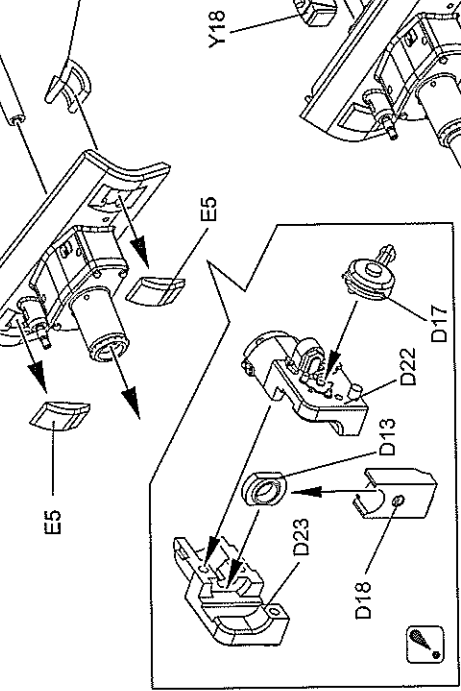
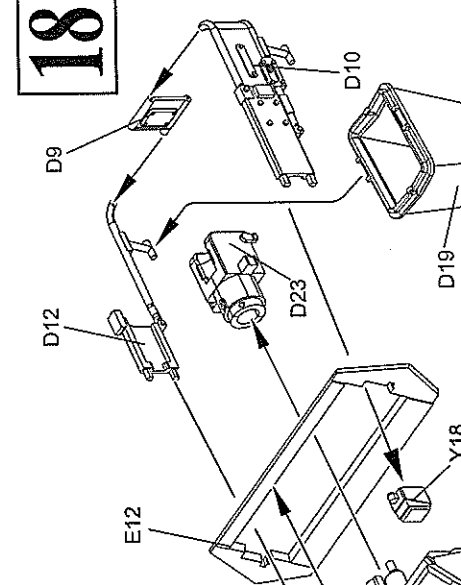
17

INITIAL PRODUCTION



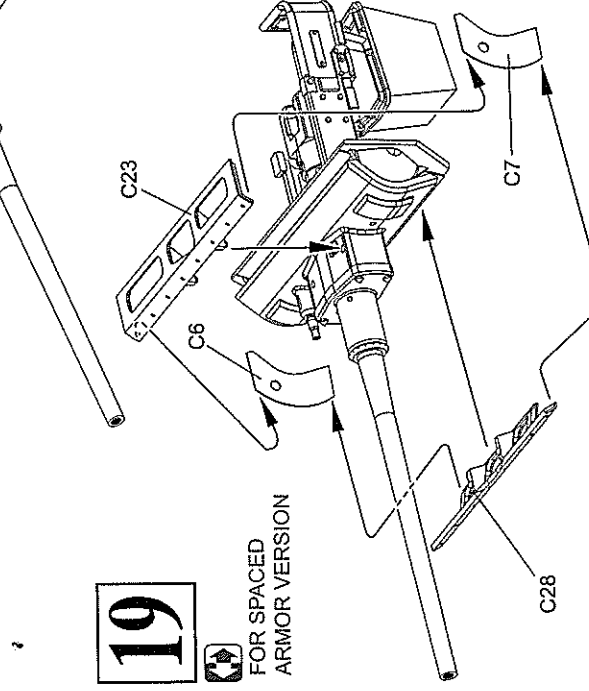
18

INITIAL PRODUCTION



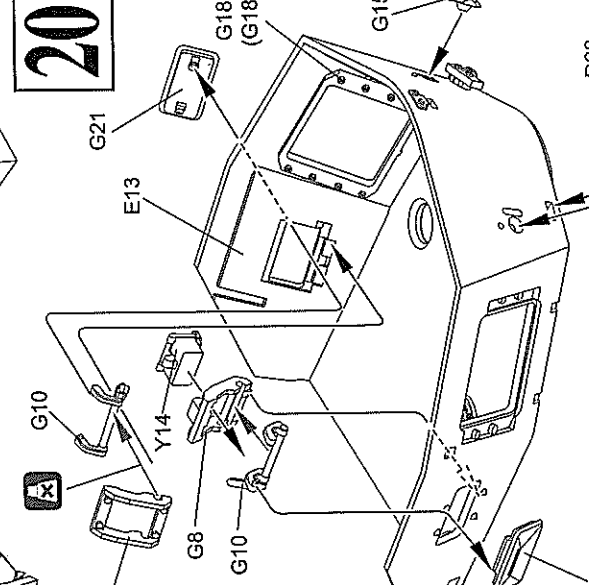
19

FOR SPACED ARMOR VERSION

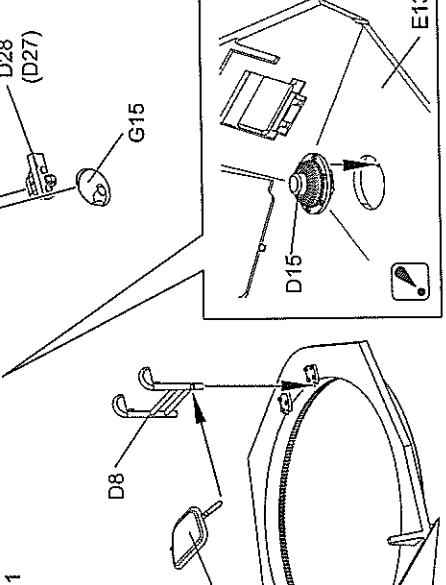
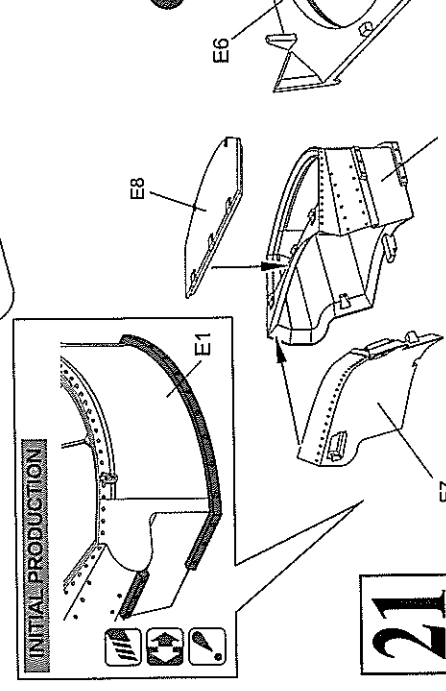


20

INITIAL PRODUCTION

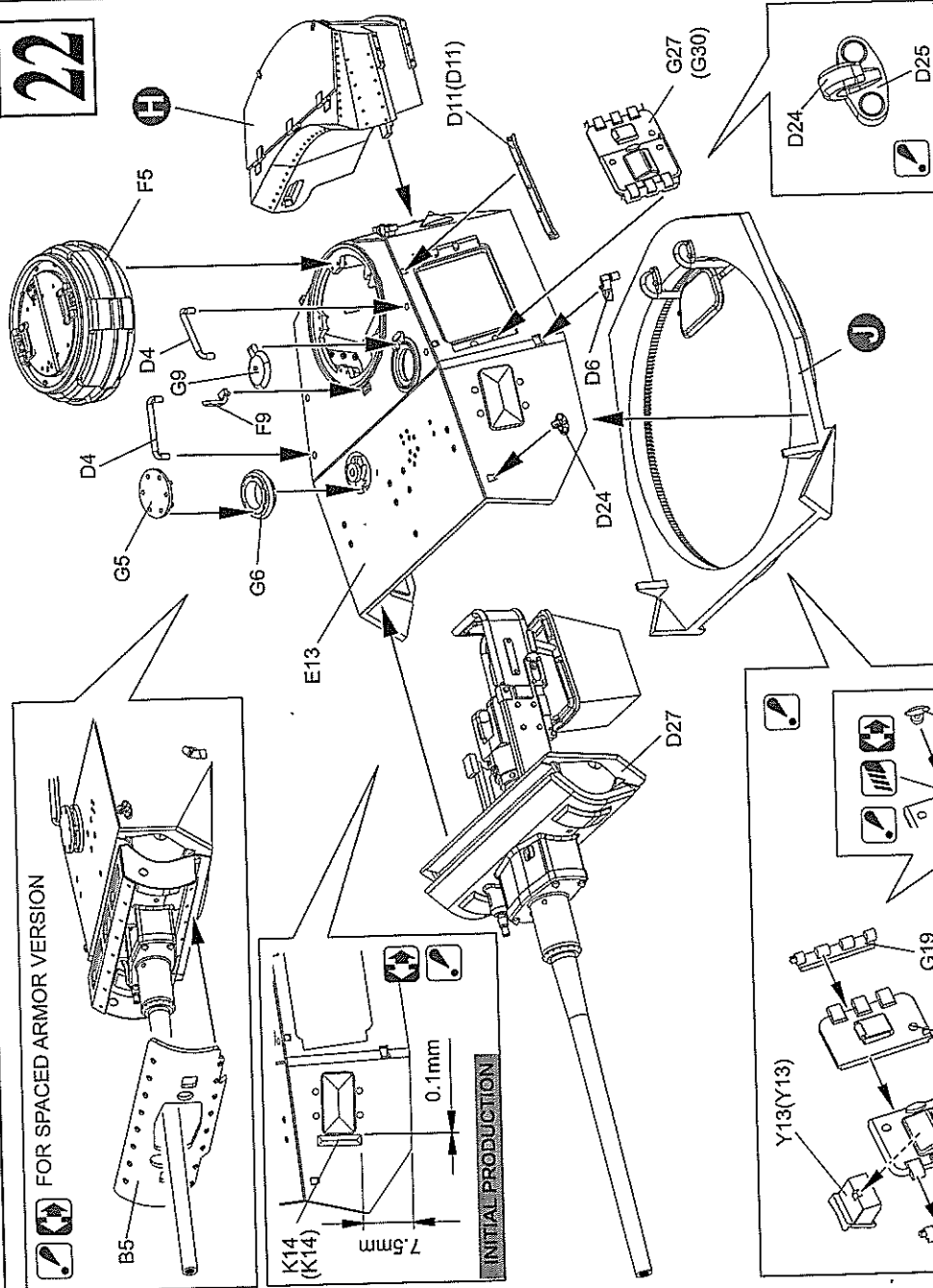


INITIAL PRODUCTION

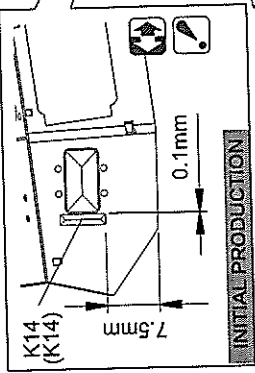
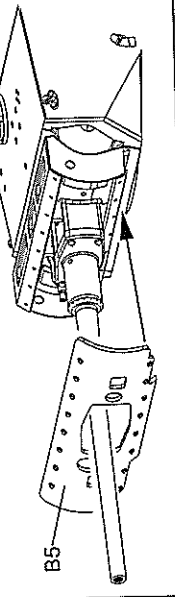


21

22

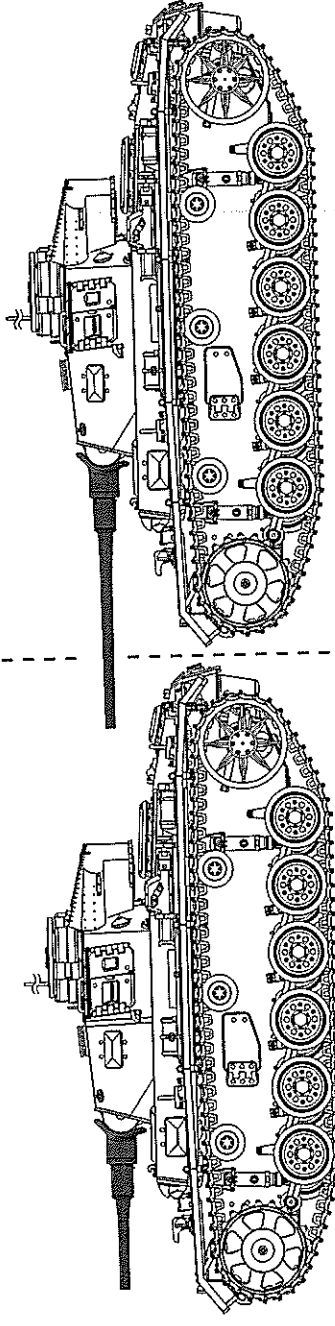
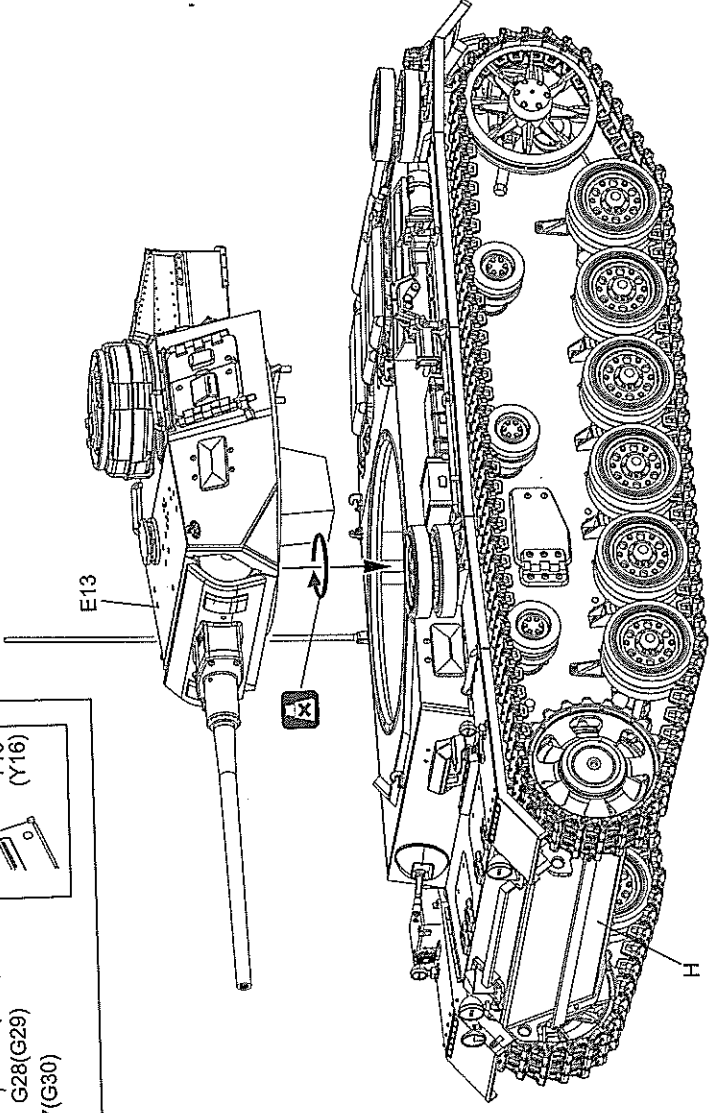


FOR SPACED ARMOR VERSION



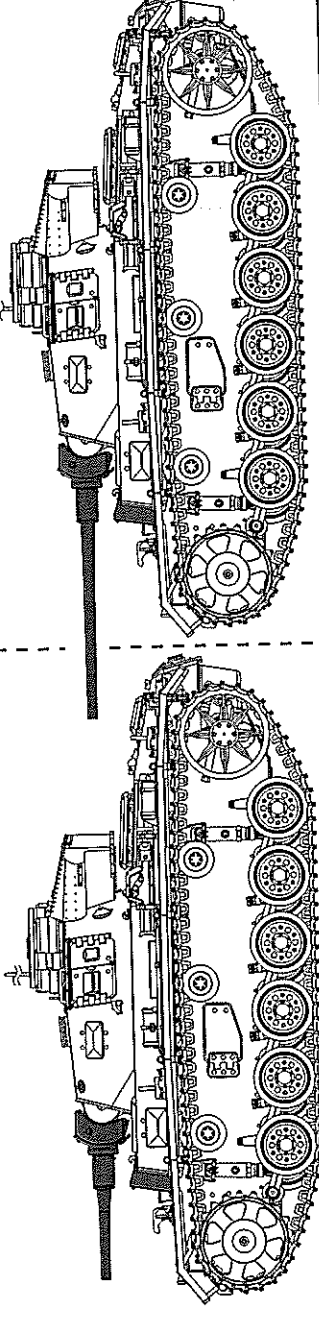
INITIAL PRODUCTION

23



SPACED ARMOR VERSION

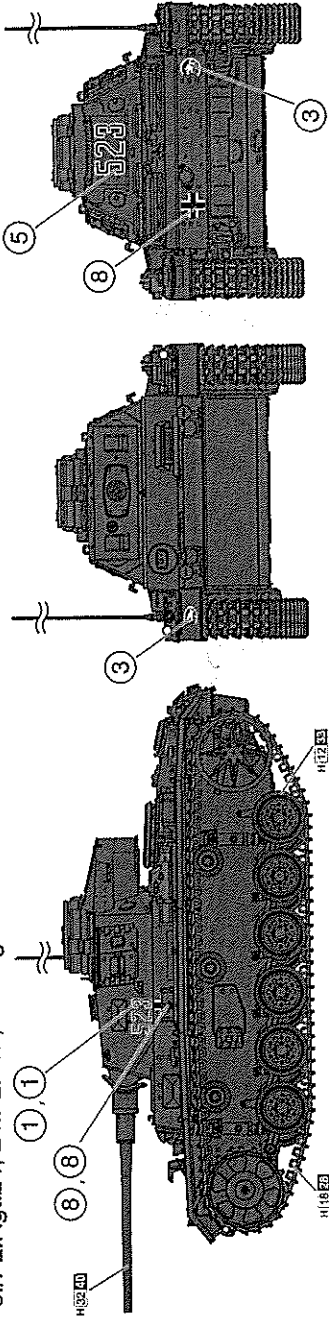
SPACED ARMOR VERSION



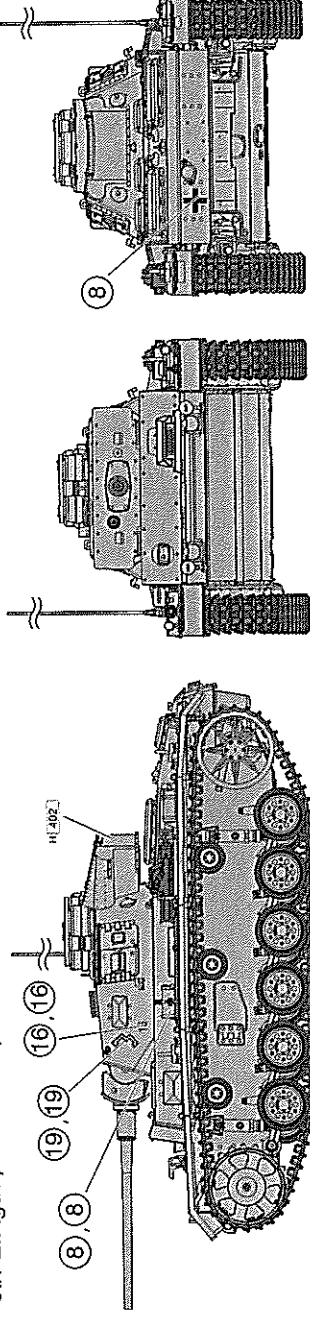
Paint & Markings

マーキング及び塗装図 Markierungen und Bemalung Decoration et Peinture Marchio & Pittura 標貼及着色指示

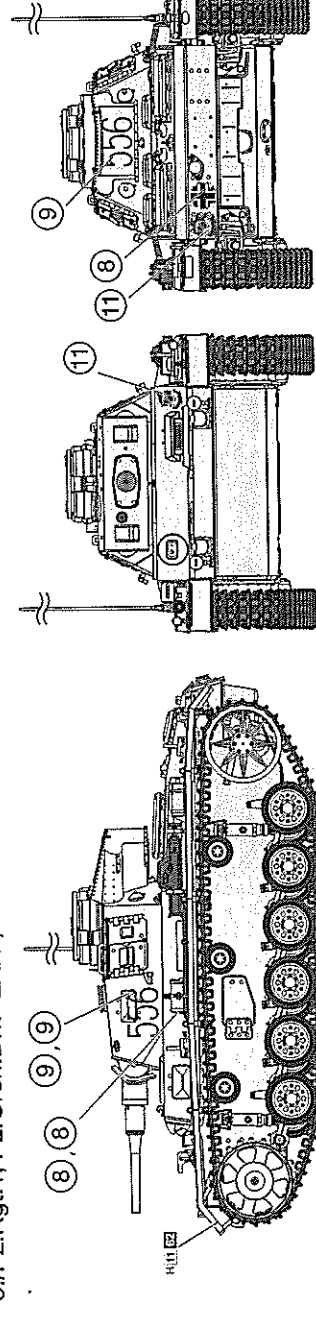
5./Pz.Rgt.24, 24.Pz.Div., Stalingrad 1942



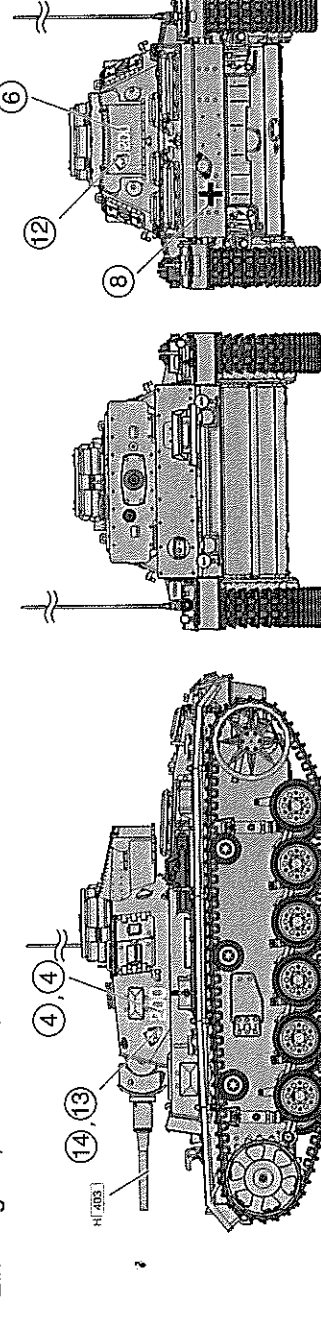
3./Pz.Rgt.7, 10.Pz.Div., Tunisia 1943



5./Pz.Rgt.1, Pz.Gren.Div. "LAH", Kharkov 1943

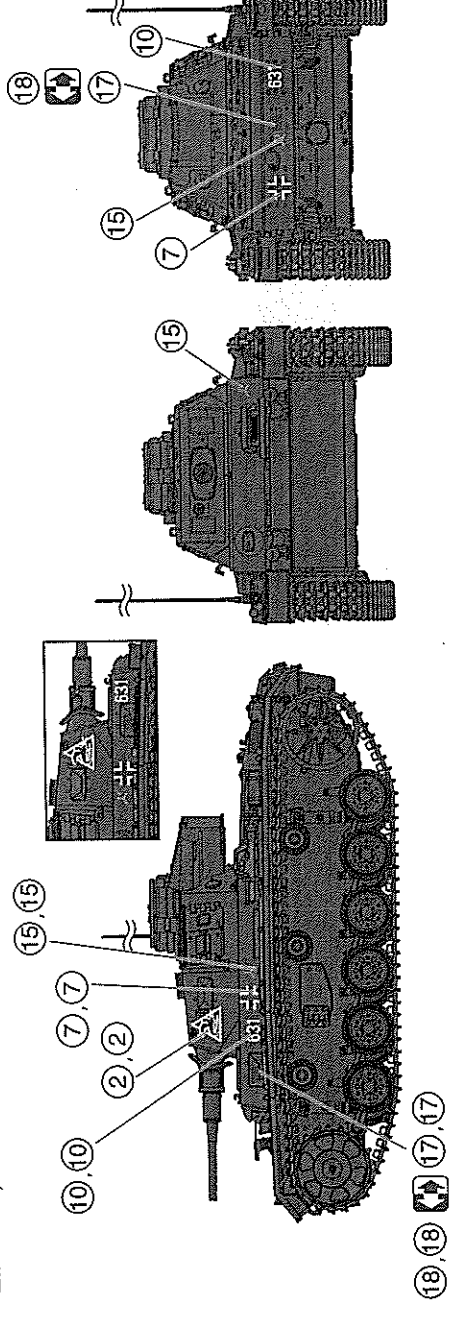


2./Pz.Rgt.18, 18.Pz.Div., Russia 1942



INITIAL PRODUCTION

2.Pz.Div., Russia 1941



Dragon Europe: c/o Hobby Pro Marketing Ges. m.b.H., Am Leonhardbach 7, A-8010 GRAZ, AUSTRIA



Copyright © 2019
6954-01

■ Correct Method for Applying Details
 1. Use a brush with a soft bristle (e.g. 1/2" or 3/4" wide) to apply the paint.
 2. Apply the paint in thin layers, allowing each layer to dry before applying the next.
 3. Use a brush with a hard bristle (e.g. 1/2" or 3/4" wide) to apply the primer.
 4. Apply the primer in thin layers, allowing each layer to dry before applying the next.
 5. Use a brush with a soft bristle (e.g. 1/2" or 3/4" wide) to apply the base color.
 6. Apply the base color in thin layers, allowing each layer to dry before applying the next.
 7. Use a brush with a soft bristle (e.g. 1/2" or 3/4" wide) to apply the top coat.
 8. Apply the top coat in thin layers, allowing each layer to dry before applying the next.
 9. Use a brush with a soft bristle (e.g. 1/2" or 3/4" wide) to apply the weathering.
 10. Apply the weathering in thin layers, allowing each layer to dry before applying the next.
 11. Use a brush with a soft bristle (e.g. 1/2" or 3/4" wide) to apply the final coat.
 12. Apply the final coat in thin layers, allowing each layer to dry before applying the next.

■ Correct Method for Applying Details
 1. Use a brush with a soft bristle (e.g. 1/2" or 3/4" wide) to apply the paint.
 2. Apply the paint in thin layers, allowing each layer to dry before applying the next.
 3. Use a brush with a hard bristle (e.g. 1/2" or 3/4" wide) to apply the primer.
 4. Apply the primer in thin layers, allowing each layer to dry before applying the next.
 5. Use a brush with a soft bristle (e.g. 1/2" or 3/4" wide) to apply the base color.
 6. Apply the base color in thin layers, allowing each layer to dry before applying the next.
 7. Use a brush with a soft bristle (e.g. 1/2" or 3/4" wide) to apply the top coat.
 8. Apply the top coat in thin layers, allowing each layer to dry before applying the next.
 9. Use a brush with a soft bristle (e.g. 1/2" or 3/4" wide) to apply the weathering.
 10. Apply the weathering in thin layers, allowing each layer to dry before applying the next.
 11. Use a brush with a soft bristle (e.g. 1/2" or 3/4" wide) to apply the final coat.
 12. Apply the final coat in thin layers, allowing each layer to dry before applying the next.

■ Correct Method for Applying Details
 1. Use a brush with a soft bristle (e.g. 1/2" or 3/4" wide) to apply the paint.
 2. Apply the paint in thin layers, allowing each layer to dry before applying the next.
 3. Use a brush with a hard bristle (e.g. 1/2" or 3/4" wide) to apply the primer.
 4. Apply the primer in thin layers, allowing each layer to dry before applying the next.
 5. Use a brush with a soft bristle (e.g. 1/2" or 3/4" wide) to apply the base color.
 6. Apply the base color in thin layers, allowing each layer to dry before applying the next.
 7. Use a brush with a soft bristle (e.g. 1/2" or 3/4" wide) to apply the top coat.
 8. Apply the top coat in thin layers, allowing each layer to dry before applying the next.
 9. Use a brush with a soft bristle (e.g. 1/2" or 3/4" wide) to apply the weathering.
 10. Apply the weathering in thin layers, allowing each layer to dry before applying the next.
 11. Use a brush with a soft bristle (e.g. 1/2" or 3/4" wide) to apply the final coat.
 12. Apply the final coat in thin layers, allowing each layer to dry before applying the next.

■ Correct Method for Applying Details
 1. Use a brush with a soft bristle (e.g. 1/2" or 3/4" wide) to apply the paint.
 2. Apply the paint in thin layers, allowing each layer to dry before applying the next.
 3. Use a brush with a hard bristle (e.g. 1/2" or 3/4" wide) to apply the primer.
 4. Apply the primer in thin layers, allowing each layer to dry before applying the next.
 5. Use a brush with a soft bristle (e.g. 1/2" or 3/4" wide) to apply the base color.
 6. Apply the base color in thin layers, allowing each layer to dry before applying the next.
 7. Use a brush with a soft bristle (e.g. 1/2" or 3/4" wide) to apply the top coat.
 8. Apply the top coat in thin layers, allowing each layer to dry before applying the next.
 9. Use a brush with a soft bristle (e.g. 1/2" or 3/4" wide) to apply the weathering.
 10. Apply the weathering in thin layers, allowing each layer to dry before applying the next.
 11. Use a brush with a soft bristle (e.g. 1/2" or 3/4" wide) to apply the final coat.
 12. Apply the final coat in thin layers, allowing each layer to dry before applying the next.