



F.4 Phantom II Series

F.4J Tail Pipe Set

This set contains fully-detailed tail pipe units to replace those in the kit. They include full inner and outer detailing, and are supplied with a pair of FOD Guard assemblies, an accurate set of Formation Lights, and a set of 'Remove Before Flight' Tags and Pins. In addition, a set of later wheel hub overlays are included.

Note that Flightpath produces super-detailed packs of both AIM-7 Sparrow & AIM-9L Sidewinder missiles [supplied in sets of two], to replace the inadequate items in the kit. Also, that we produce a US Navy Carrier Deck Set - giving three USN wheel chocks, a USN tow bar, eight highly-detailed tie-down chains, and 24 tie-down points for your carrier deck display. We also produce a range of USN Weapons Trolleys. Make sure you have our latest list.

Assembly -

Tail Pipes -

Kit parts C1, C2 and C11 are discarded.

1. Fit the turbine blade etching [2] over the shoulder on the cast bullet and twist the blades with fine pliers, as shown in the diagram. Fit the assembly into the hole in part 1, so that the blades stand proud of the surface of part 1. Fit part 3 over the cast bullet, locating onto the step in the cone of the bullet. When fixing in position, ensure that part 3 is parallel in its plane to part 1.

2. Form the main section of part 4 with the detail facing inwards, and locate into the twenty-sided recess provided in part 1. If you elect to solder this item in position, it will be easy to tack each flat section of part 4 into place as you go. It can just as easily be glued in place, but will then benefit from

more accurate pre-forming of the part. Ignore the 16 extensions at the end of the unit for the present.

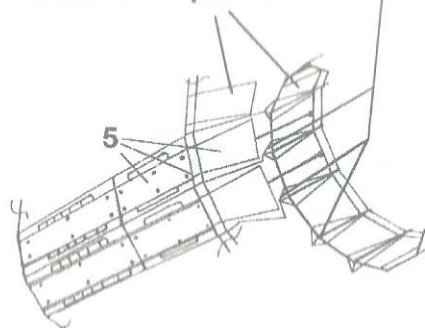
3. When this unit has been painted, you should assemble kit parts C3 and then insert the assembly into one of the tunnels in kit parts C3 from the front [inside] end, locating the ends of the tunnel on kit parts C3 into the recess provided on part 1. Fold the small triangular brackets on the extreme ends of the 16 extensions to part 4 outwards - The angle of these is not critical at present.

4. Form part 6 with the detail facing outwards -

The main section of part 4 has 20 sides, and is formed and fitted through kit parts C3. The front end of part 4 fits into the 20-sided recess etched in part 1.

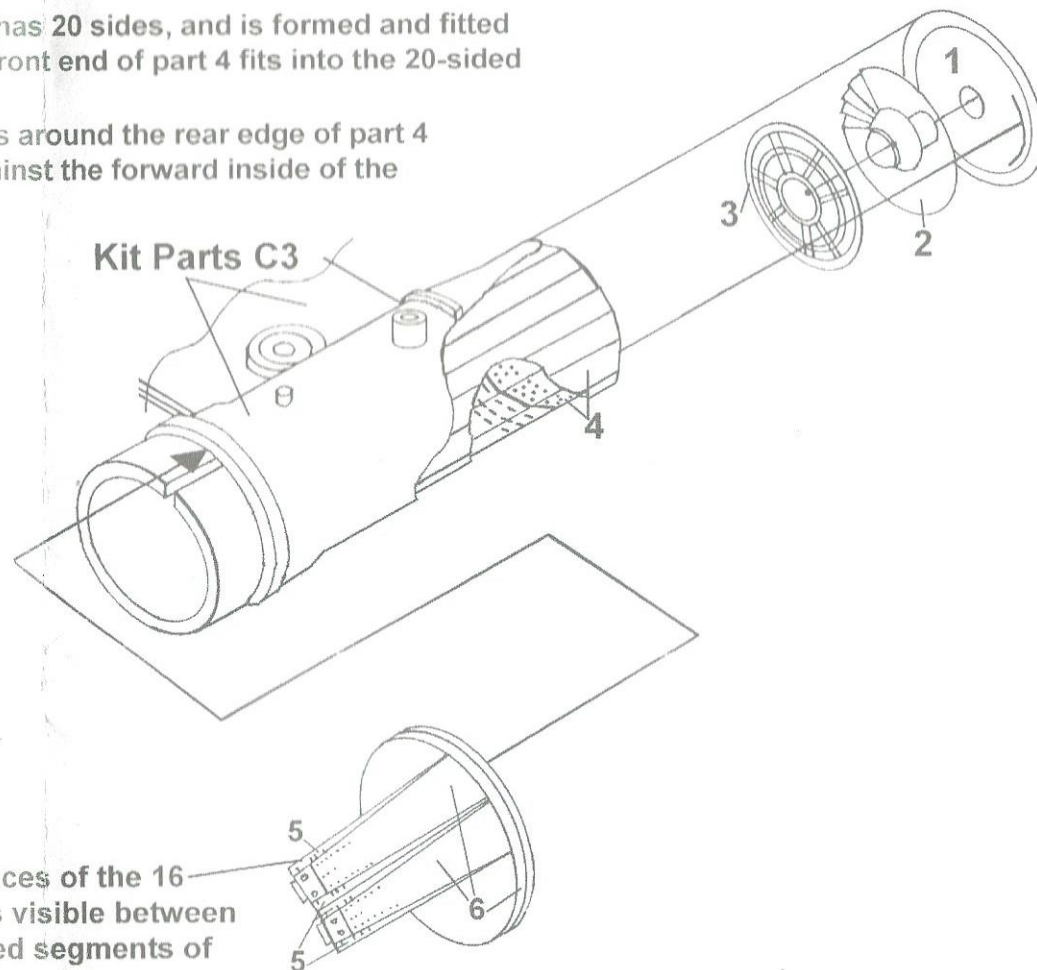
The 16 small triangular tabs around the rear edge of part 4 fold outwards to locate against the forward inside of the folds in part 5

Fit the outer surfaces of the sixteen tabs on part 5 onto the marked areas on inside of part 4



Detail on the outer faces of the 16 segments of part 5 is visible between the overlying splayed segments of part 6

Kit Parts C3



preferably soldering the joint line together. Test-fit over one of the rear shoulders on kit parts C3, but do not fix in position yet. Now form part 5 with the detail facing inwards, noting that there is an intermediate section of each of the 16 segments of this part that folds inwards and that then enables the semi-triangular tab at the end of it to be folded forwards to locate onto the areas marked around the inside rear edge of part 4. Test fit the entire assembly again, but, do not fix. Now both parts 5 and 6 should have their segments bent inwards so that the edges touch, and form a shallow cone to each part.

5. When satisfied with the forming, fit part 5 by attaching the sixteen lugs over the marked areas on part 4, noting that, in turn, the triangular brackets on part 4 are now folded outwards to touch the forward edge of part 5 in line with each fold in the part. Fit part 6 in place over kit parts C3, ensuring that the segments of the pipe are in register with those on part 5.

6. The joints between the segments on parts 5 & 6 can be strengthened by running thin cyanoacrylate adhesive into them, being careful not to foul any of the detail.

The sequence should then be repeated for the second unit, and the completed jet pipe assembly painted, and fitted to your model.

Wheel Hubs

These are supplied as overlays for the inner faces of the plastic main wheel hubs [H13] supplied in the kit. Fit part 2 over part 1, and fit part 3 centrally over part 1, where marked. Fit part 4 centrally into recess on part 3, and add part 5 over part 4, with the detail facing outwards. Now glue the completed assembly onto the plastic wheel hub. Fit hub flange over the rim of the plastic hub. This is probably best added after the kit tyre has been fitted. Repeat the sequence for the second hub.

FOD Guards

1. Laminate part 1 over part 2 after first forming both parts. The two triangular lugs on part 1 slot into part 2, and the central section of part 2 folds inwards, at an angle dictated by parts 4-7 [see below]. Fit part 3 to the front of part 2, where shown.

2. Fit parts 4-7 from the top - locating into the slots and grooves provided in part 2. It will now be seen how these parts dictate the final forming of part 2, which can be adjusted as required.

3. The unit is painted gloss red, and fitted by gluing the folded-back side flap on part 2 to the inside face of the intake, and the rear edges of the guard to the front edges around the intake. Use fine cord in conjunction with the pin [8] to represent the securing strap. This is tied around the loops on part 1 & 2, and passes through the eye of part 8, which should have a locating hole drilled in the side of the fuselage 21.5mm aft of the leading edge of the wing root, and 4mm above the intersection of the upper wing surface and the fuselage side.

RBF Tags & Pins

These are red with brass eyelets, and carry the wording 'Remove Before Flight' in white letters. They are secured to the aircraft by use of pins, of which two styles are supplied. The tags should be fitted to the pins by means of a wire loop - see illustration. The pins are bright metal.

Formation Lights

Included is an accurate set of these items to replace those given as decals in the kit, which are much too small, and inaccurate in detail. The ones we supply are appropriately labelled on the frets as being for front [cockpit], mid [fuselage above wings], or fin positions.



From



Trefacwn Fach,
Llanrhian,
St. Davids, Pembrokeshire,
SA62 6DP, Wales, UK

www.djparkins.com

