

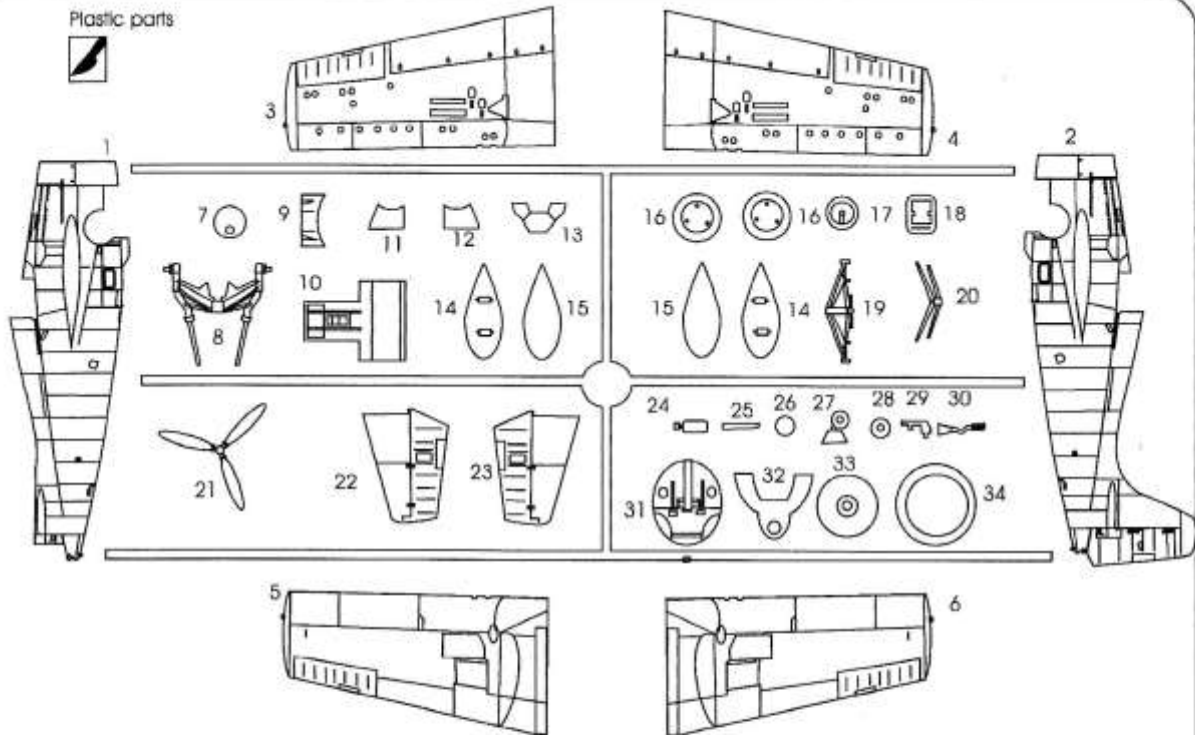
General Motors FM-2

Plastic model

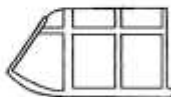
scale :1/72

The **General Motors FM-2 Wildcat** was an American carrier-based fighter aircraft that began service with both the United States Navy and the British Royal Navy (as the **Martlet VI**) in 1943. GM produced the **FM-1**, identical to the F4F-4, but reduced the number of guns to four, and added wing racks for two 250 lb (110 kg) bombs or six rockets. Production later switched to the improved **FM-2** (based on Grumman's XF4F-8 prototype) optimized for small-carrier operations, with a more powerful engine (the 1,350 hp (1,010 kW) Wright R-1820-56), and a taller tail to cope with the torque. General Motors / Eastern Aircraft produced 5,280 FM variants of the Wildcat.

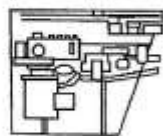
Plastic parts



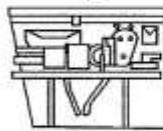
Transparent part T1



PUR parts P1



P2

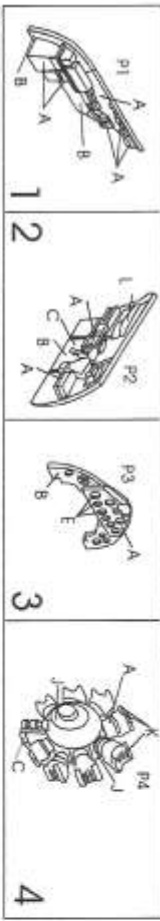


P3

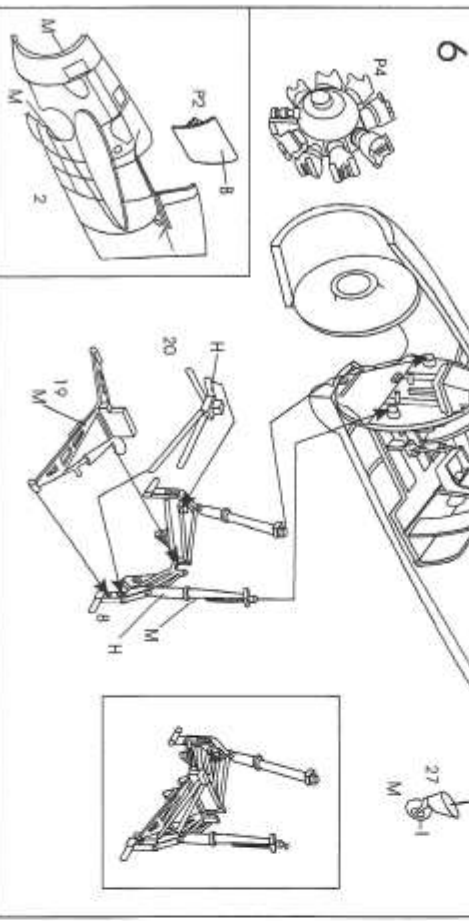
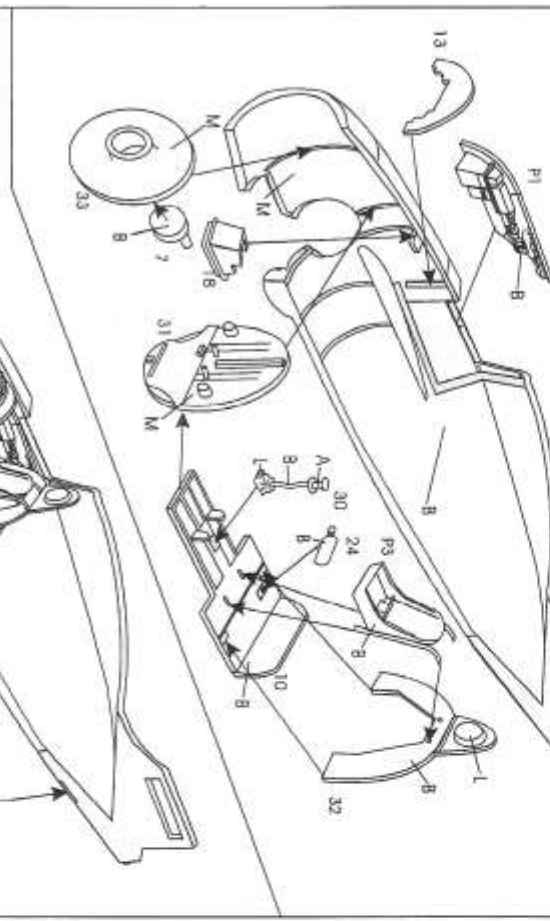


P4





Colour name		Number	Colour name		Number
A	Black		E	Red	
B	Black/Orange		G	Yellow	
C	Silver		H	Blue	
D	Green		I	White/Black	
E	Light Grey		J	Grey	
			K	Chrome	



General Motors FM-2

