



# Centurion Mk.5



**W/DOZER**

In 1943, the British Army started design a 40-ton cruise tank with the ability to withstand a direct hit from the German 88mm gun. This tank, now known as A41, would adopt Rolls-Royce engine and Christie suspension. However it was quickly found that A41 would exceed 40 tons. Eventually this requirement was withdrew. Two kinds of 17-pound main gun was fitted for testing - one was that of used on the Firefly tank; the other was a shorter barrel, planned to be fitted to the Comet tank. Eventually the British Army opted for the former. After evaluation, the A41 with slightly modification and weighted 43 tons, now was formally designated as the Centurion, only got 6 prototype tanks completed before the end of war. However the war was soon over even before the prototype tanks reached continent.

The first batch of Centurion Mk. I were completed as plan, and delivered to the British Army in 1949. From Mk. 3, the Centurion adopted 20 pound main gun, This type participated the Korean War. There are 13 variations of Centurion in total.

After the end of the Korean War in 1953, the NATO member countries started to standardize ammunition to achieve maximum effectiveness in logistics support and to facilitate materiel data management. Under this protocol, the 7.92mm coaxial machine gun on Mk. 3 was replaced with a 7.62mm one, and redesignated as Mk.5.

1943年、イギリス陸軍は、ドイツ軍の88mm砲の攻撃に耐えうる40ト巡航戦車の開発に着手した。この戦車はA41と呼ばれ、ロールスロイス製エンジンと、クリスティー式サスペンションを搭載していたが、重量が40トを上回ることがすぐに明らかとなった。装備する砲として、2種の17ポンド砲がテストされた。ひとつはファイアフライ戦車に搭載されていたタイプ、もうひとつはコメット戦車への搭載が計画されていた砲身の短いタイプで、最終的にイギリス陸軍は前者を選択したのだった。

評価試験ののち、A41に多少の修正を加えて重量を43トとしたものが、センチュリオン戦車として正式に採用され、大戦の終了直前に6輦の試作車が完成、ヨーロッパ大陸へと送られたが、到着前に戦争は終結してしまった。最初の生産ロットのものが、1949年にイギリス陸軍に納入され、Mk.3のタイプからは20ポンド砲を装備し、このタイプは朝鮮戦争で活躍した。センチュリオンには、合計で13種のバリエーションが存在した。

1953年朝鮮戦争の後、NATO加盟国は兵站と管理の効率化のため、装備弾薬の規格統一に乗り出した。この取り決めに従い、センチュリオンMk.3は装備していた7.92mm同軸機関銃を、7.62mmのものに取り替えられ、センチュリオンMk.5と呼称も変更された。

英國在大戰後半的1943年, 著手設計一種能夠承受德國88mm火炮攻擊, 但重量需在40t以內的巡航戰車, 這種採用勞斯萊斯引擎, 克利斯蒂懸吊(Christie suspension)戰車的暫定編號為A41, 很快的A41被發現無法在40t的限重中達到原先設定的需求, 乃至最終取消了這個限制。當時已配備於螢火蟲戰車的17磅砲, 與另一種倍徑稍短口徑相同, 計畫將搭載於慧星式戰車的17磅砲, 被安裝於A41上進行測試, 測試的結果, 最終選擇採用了與螢火蟲相同的火炮。

通過評估後的A41, 經過稍許的修改, 被正式命名為百夫長戰車, 重量已經達到了43t, 於大戰末期完成六輛原型車, 隨即投入西歐戰場參與實戰考驗, 但抵達歐陸前戰爭已經落幕, 錯失了驗證的機會。雖然未即趕上歐陸戰場, 但第一批百夫長量產車仍然按計畫完成, 而後軍方賦予編號為Mk. 1, 於1949年交付英國陸軍, 百夫長在服役期間陸續進行各種改進的工程, 前後共有十三種型號, 自Mk. 3開始, 新的20磅(83. 4mm)砲取代了最初的17磅(77mm)砲, 並參與了1950年爆發的韓戰。

1953年韓戰簽訂停戰協定, 北約盟國開始落實彼此間彈藥的標準化與共通化, 百夫長Mk3所使用的同軸機槍口徑由原本的7. 92mm更改為7. 62mm, 至此之後型號變更為Mk5。

### Illustration: 圖示說明



### Method For Applying Decals:

### 水貼紙使用說明:

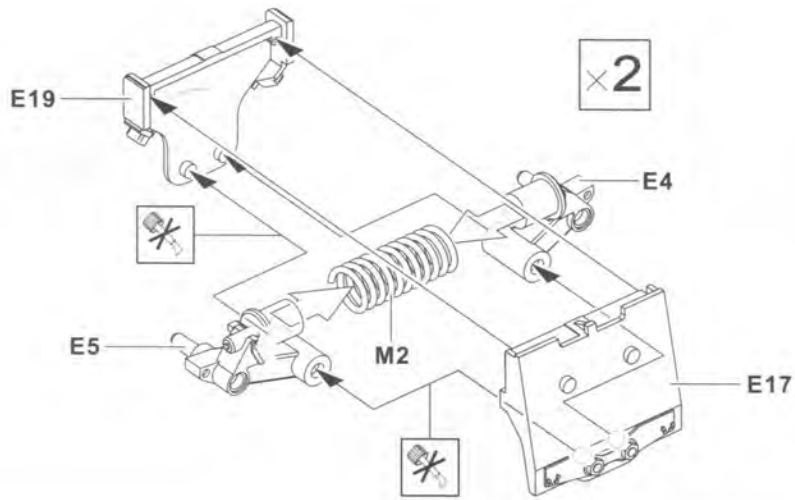
1. Clean Model Surface With Wet Cloth.
2. Cut Out Of Decal Sheet And Dip Them In Water For 15 Seconds.
3. Place it on proper position on model.
4. Slide off base paper leaving decals On Model With Wet Finger Tip.
5. Move Decals To Exact Position, Push Out Excess Water Under Decal With Soft Cotton Cloth.
6. When Decals Get Dry Then Complete.

1. 將模型表面擦乾淨
2. 將貼紙剪下泡入清水中約15秒
3. 將泡濕之貼紙取出置於欲貼處旁
4. 用指尖輕推貼紙表面使其滑出底紙
5. 將貼紙調整至適當位置並輕擦拭水份
6. 待其自然乾燥後即完成

### Color list: 塗料表

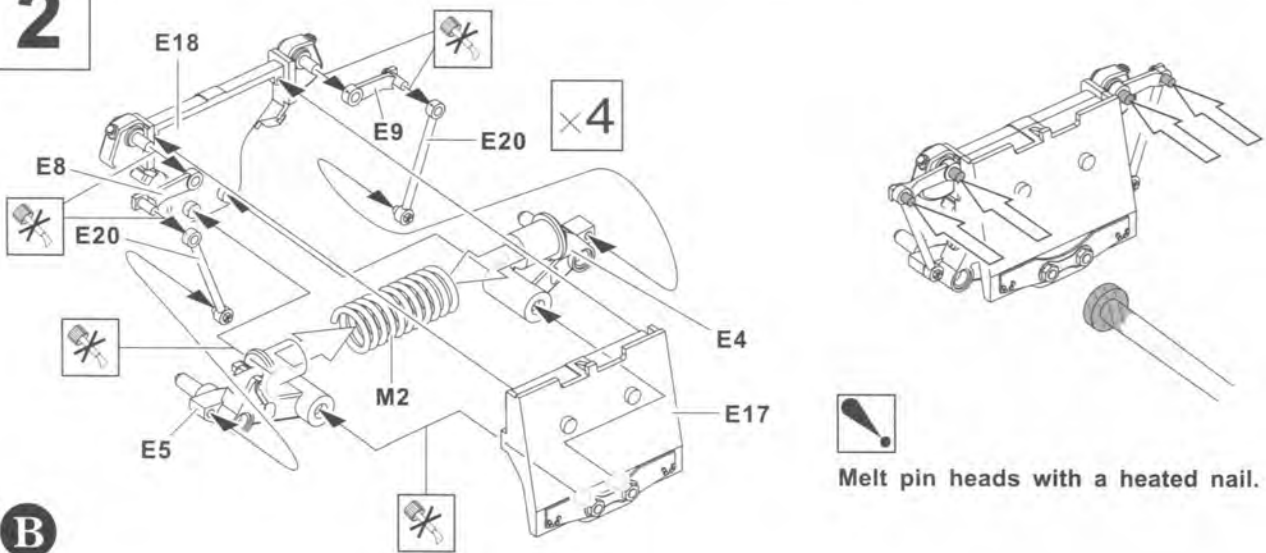
Color	Brand	Gunze Sangyo			Humbrol	Revell	Life Color
		Hobby Color	Mr. Color	Mr. Color Spray			
Olive drab(2)	橄欖綠	H-78	C-38	J-38	66	46	UA106
Steel	黑鐵	H-18	C-28	J-28	53	91	LC76
Tire black	輪胎黑	H-77	C-33+C-62		85	302	
Wood brown	木棕	H-37	C-43	J-43	34	05	UA085/ UA125
Flat white	消光白	H-11	C-62	J-62	34	05	LC01
Red	紅	H-3	C-3	J-3	19	31	LC56
Bright blue	寶藍	H-15	C-65	J-65	14	51	LC60
Red brown	紅褐	H-47	C-41	J-44	160	383	
Silver	銀	H-8	C-8	J-8	11	90	LC74
Tan	皮革	H-27	C-44	J-44	118		
Brass	黃銅	H-9	C-9	J-9	54	92	LC75

1



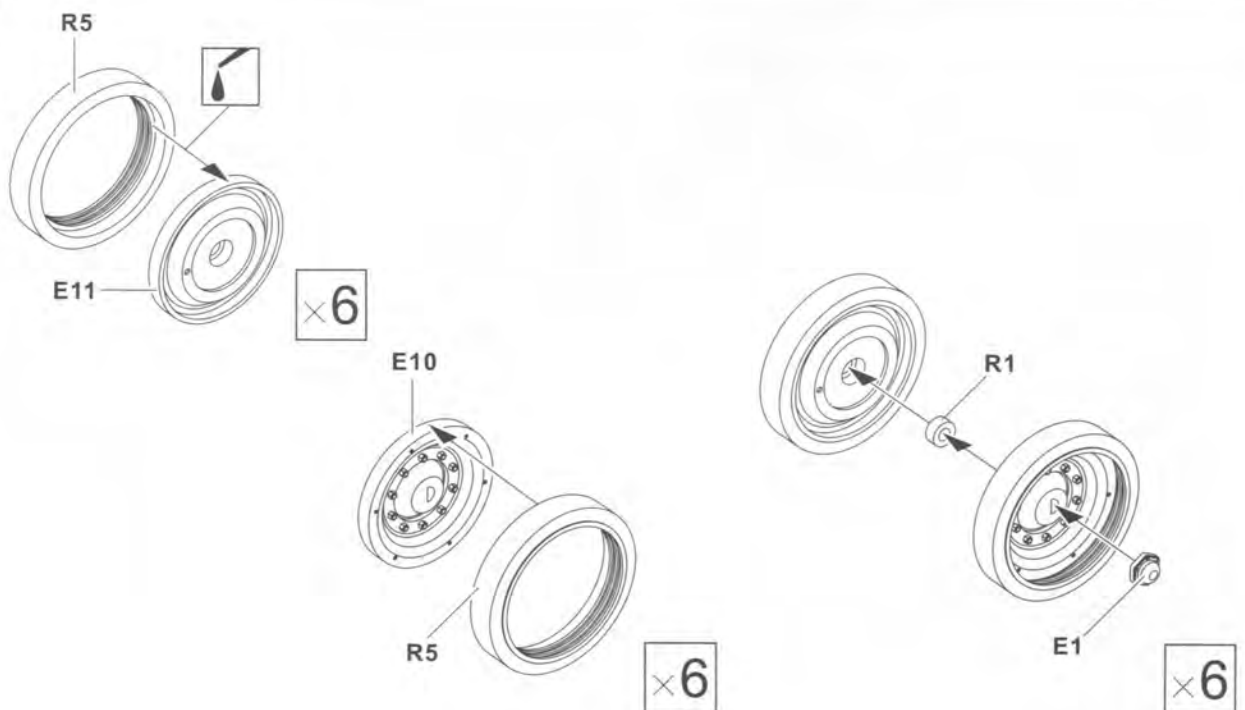
A

2

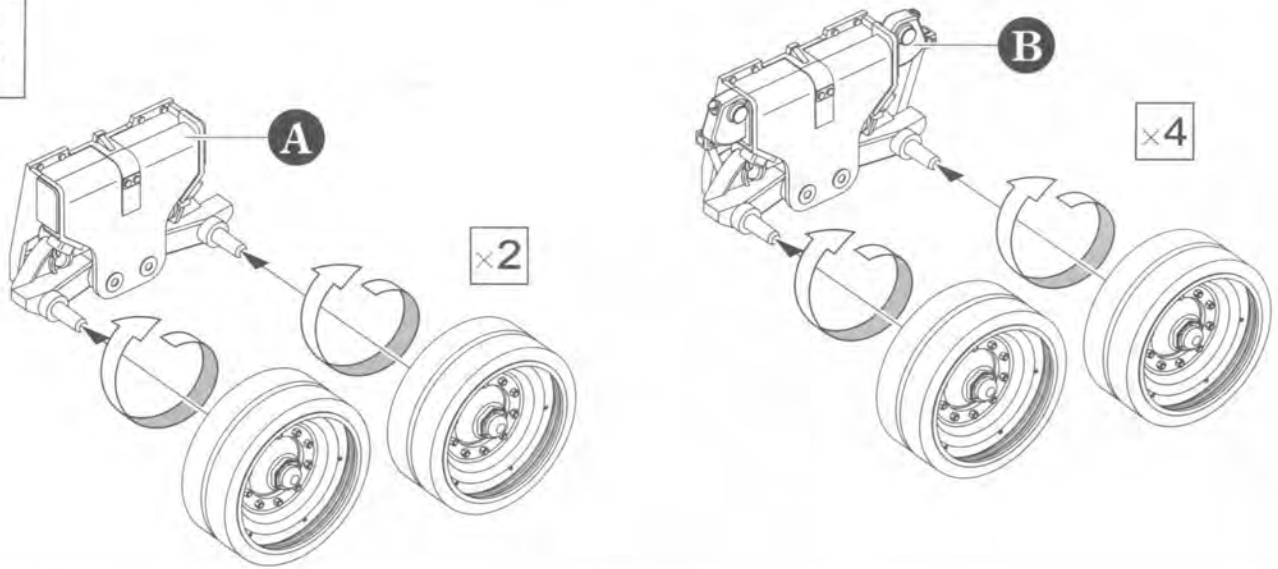


B

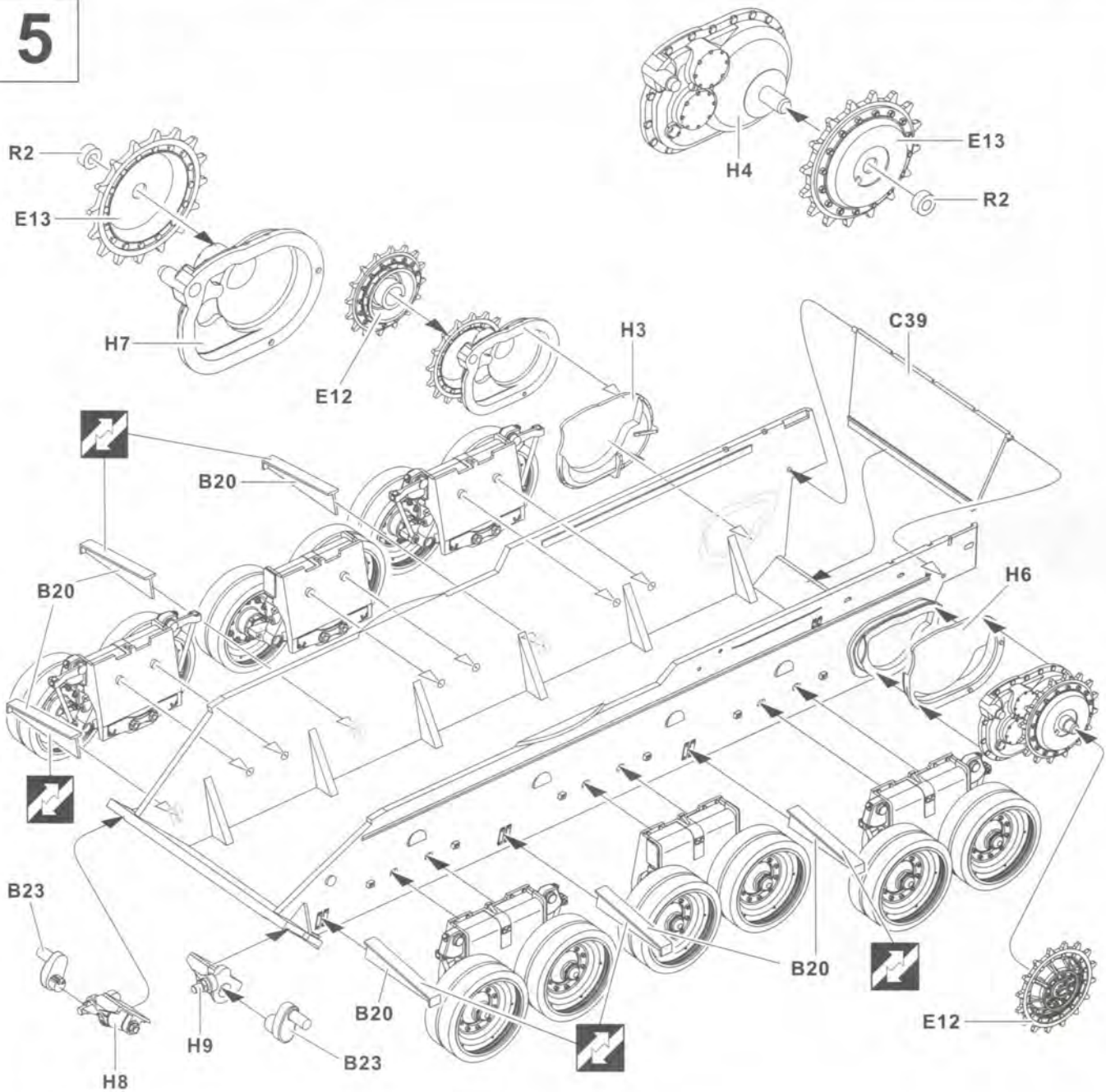
3



4



5

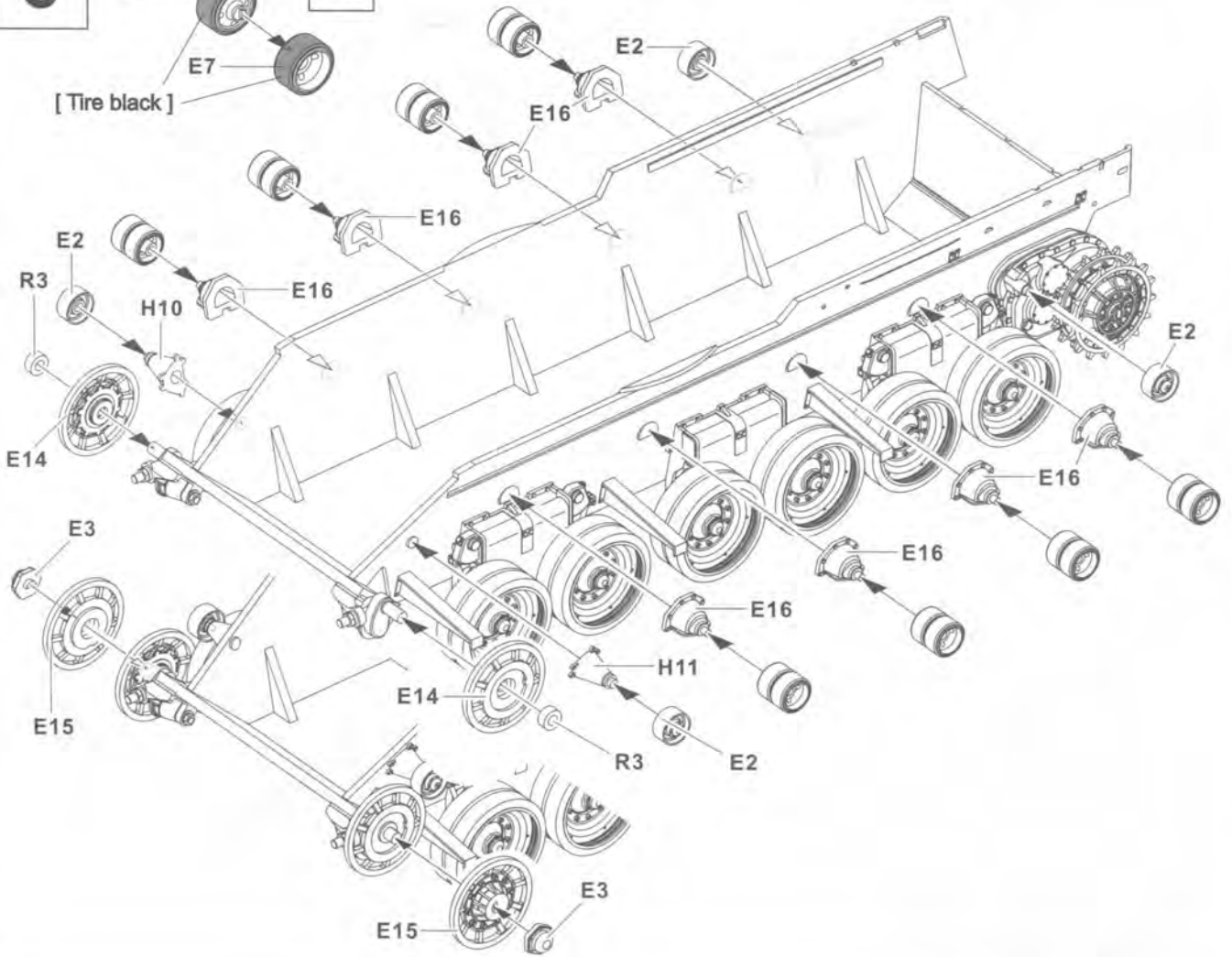


6

E6

×8

[ Tire black ]



7



Variety:  
部分車輛:

N1

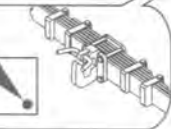
H17

C17

H24

H25

C18



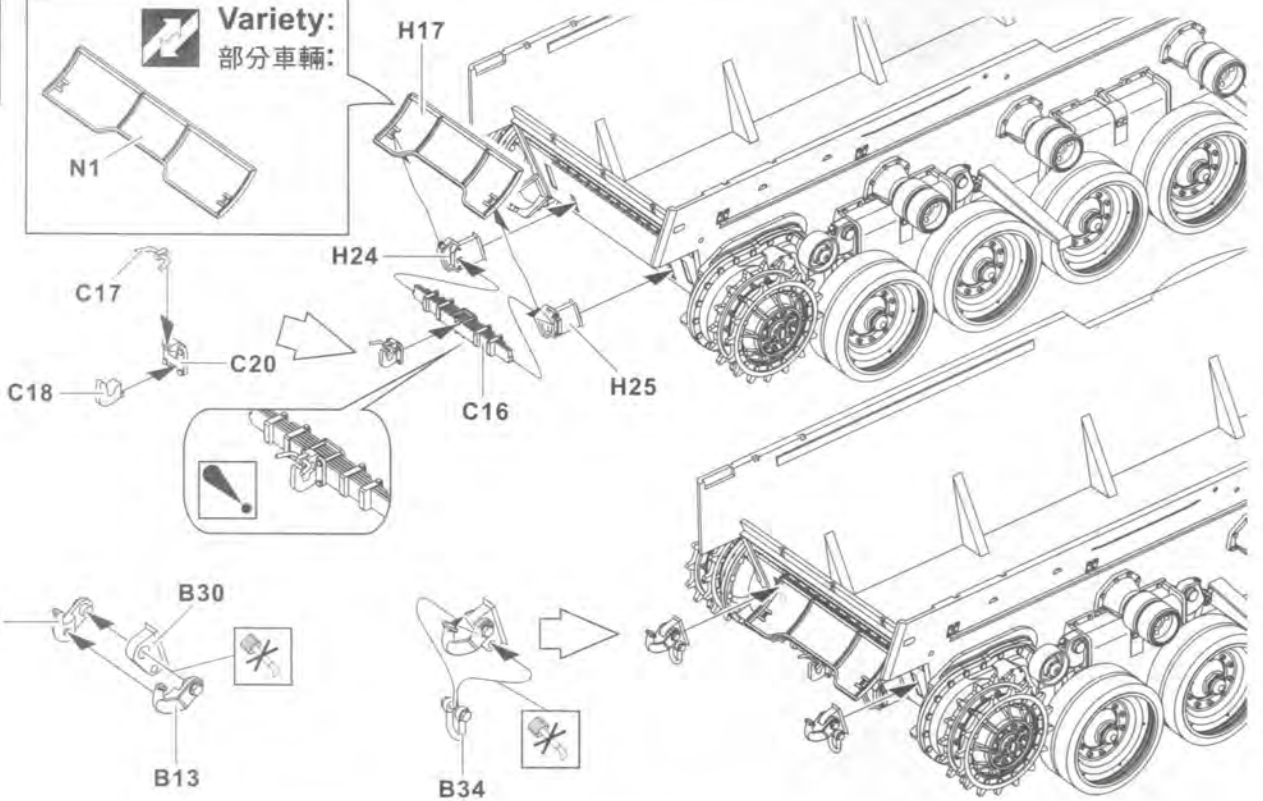
C16

B14

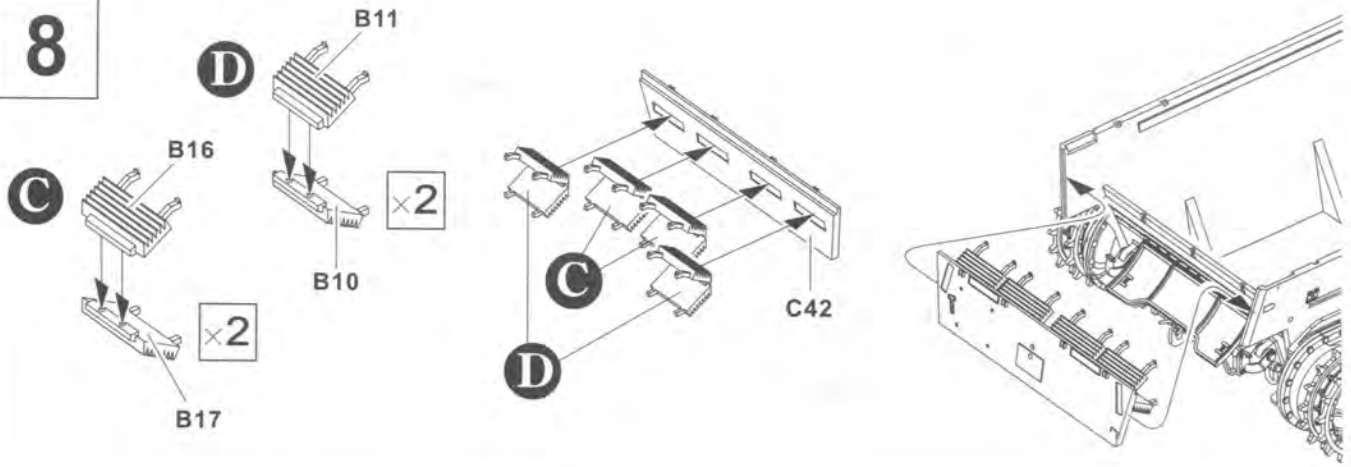
B30

B13

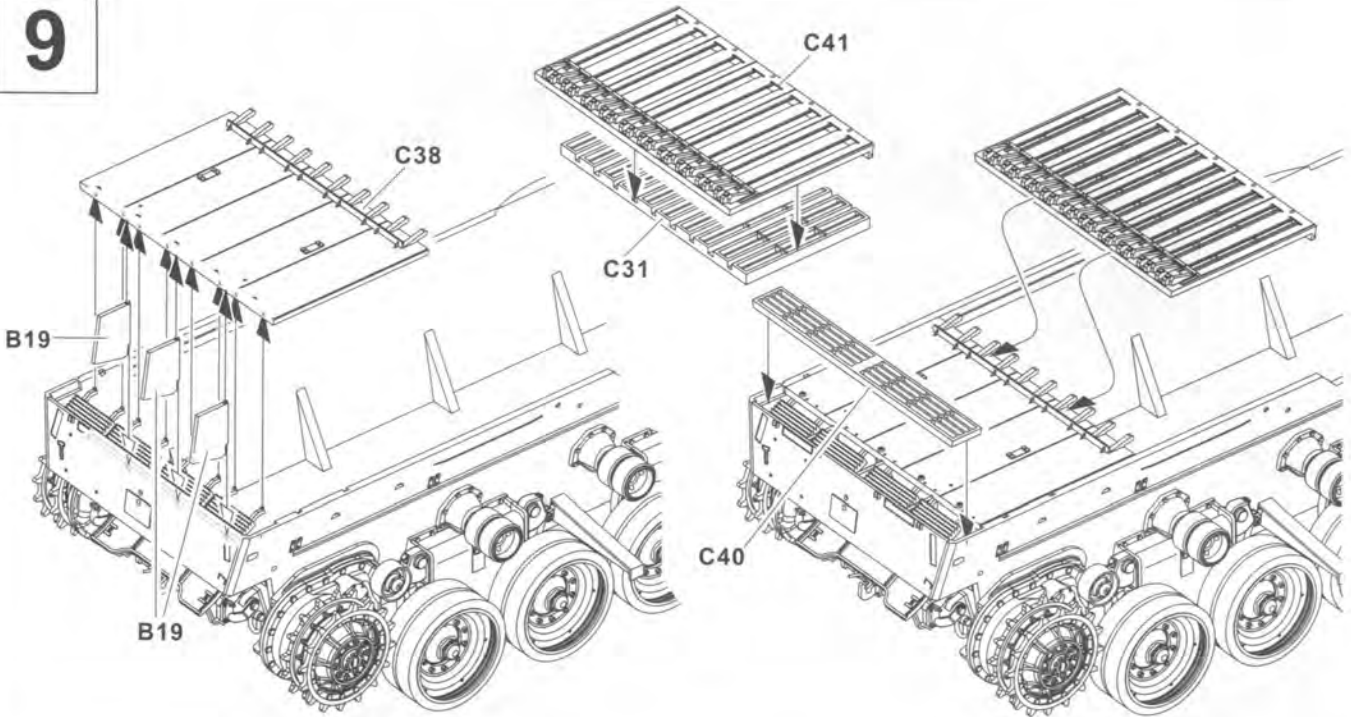
B34



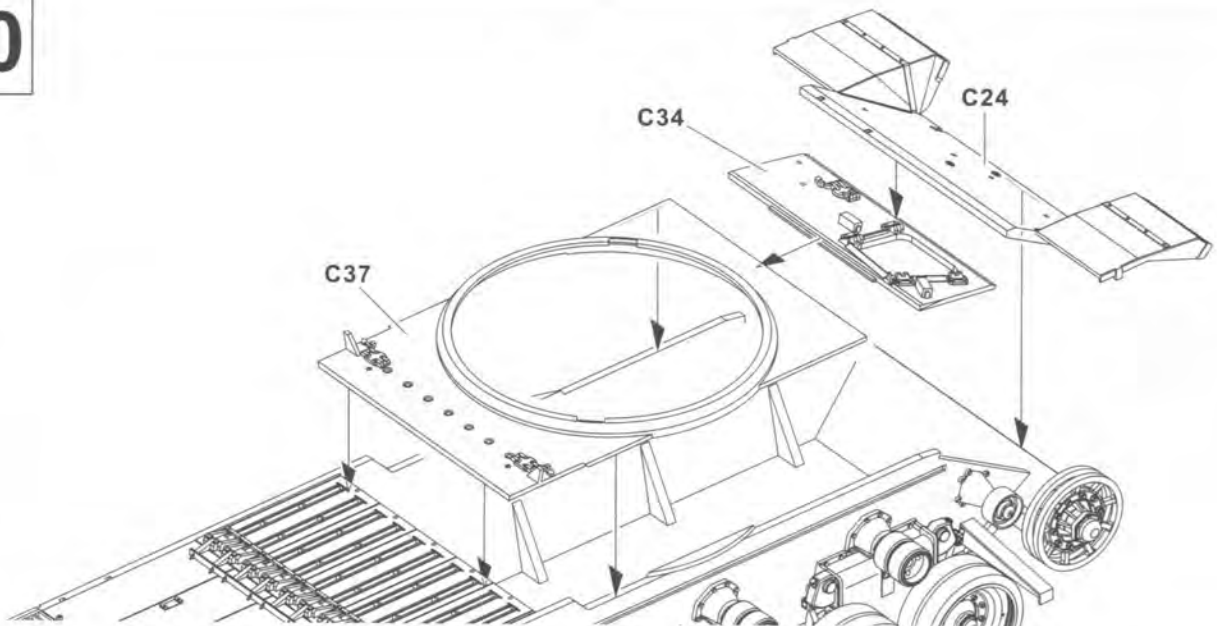
8



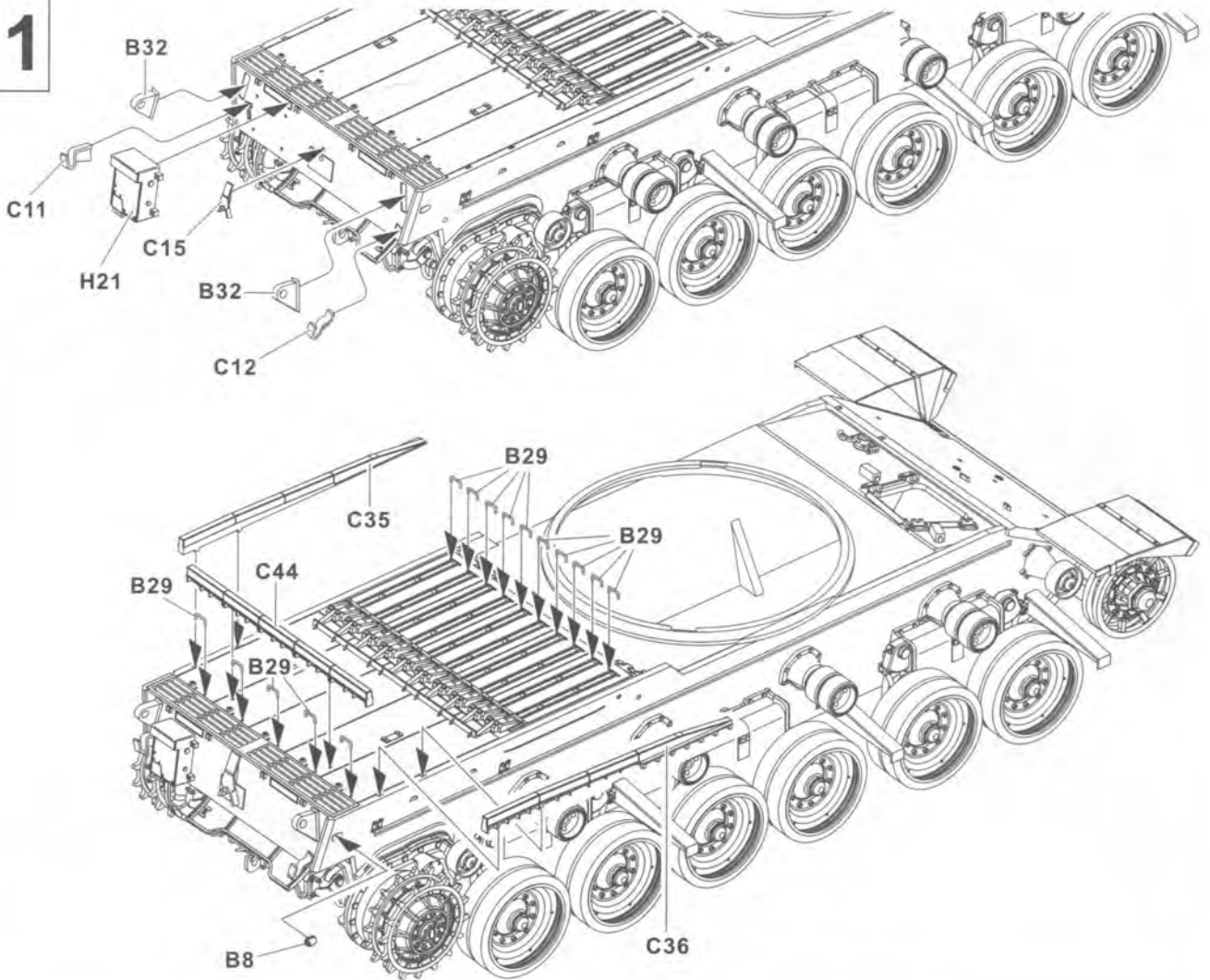
9



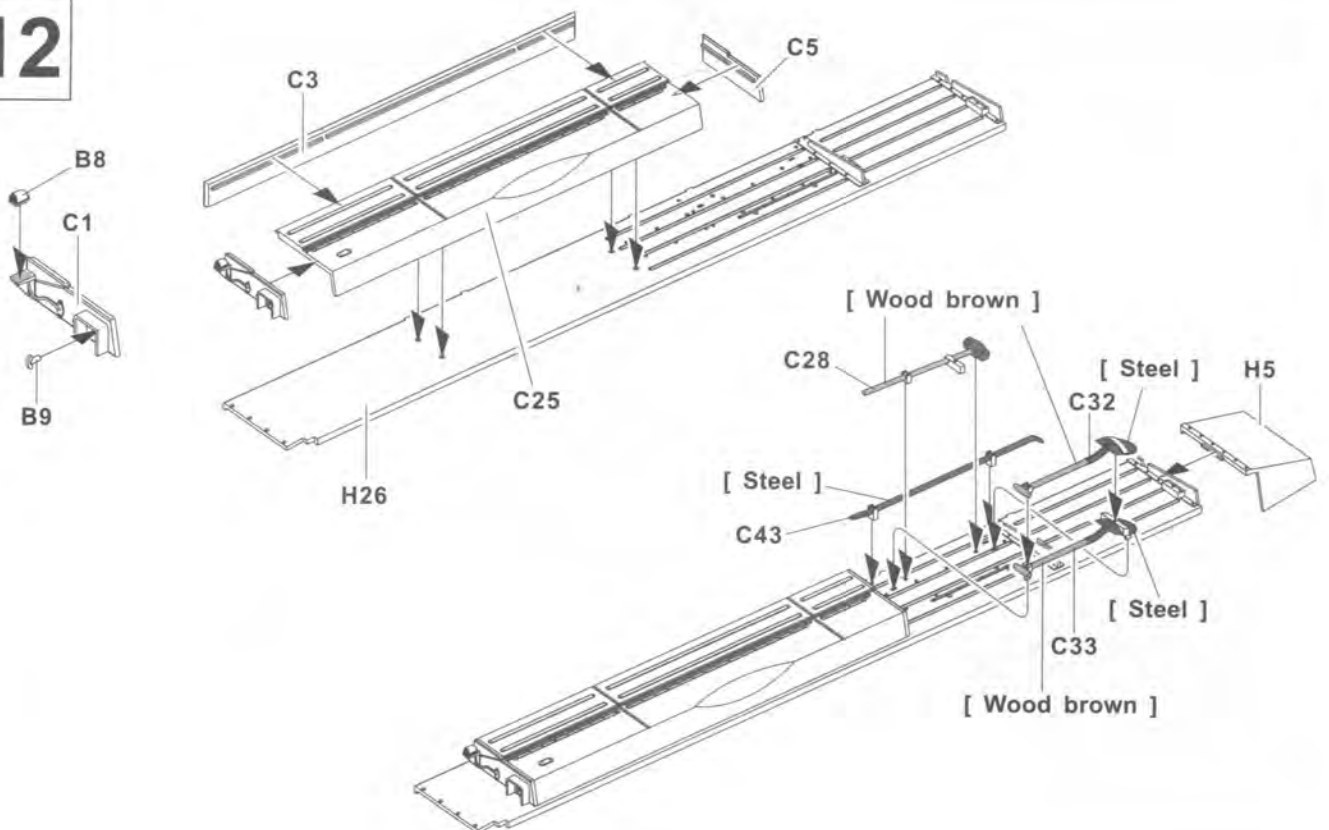
10



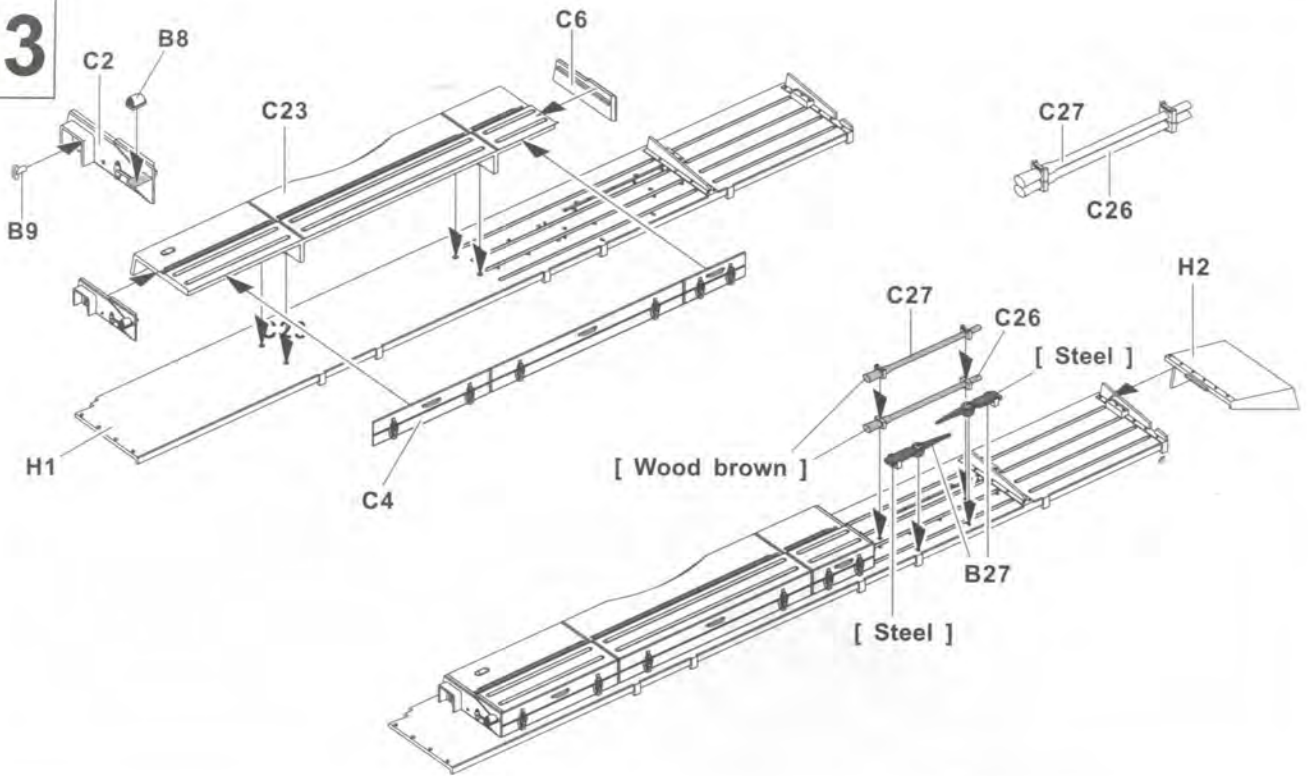
11



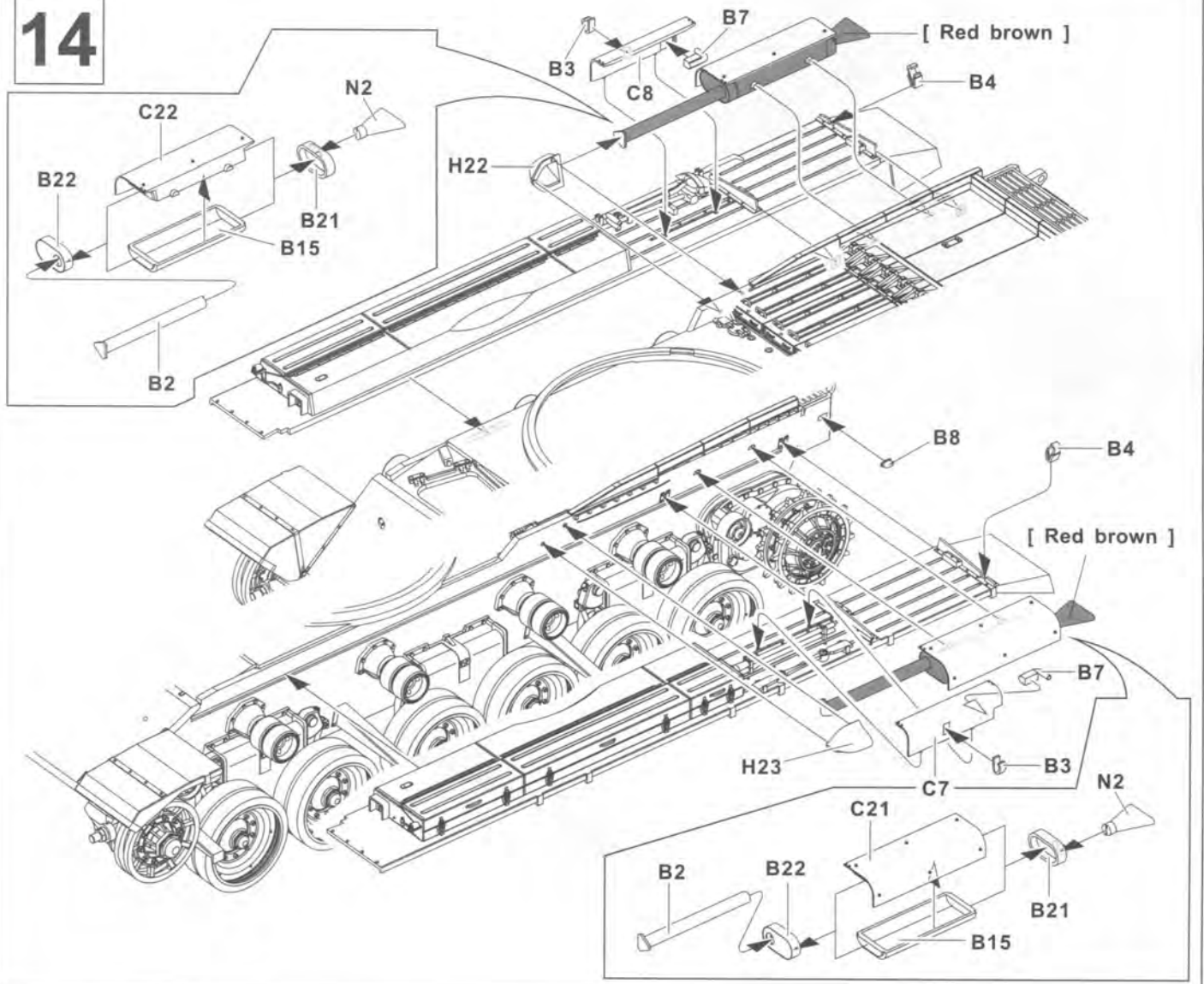
12



13

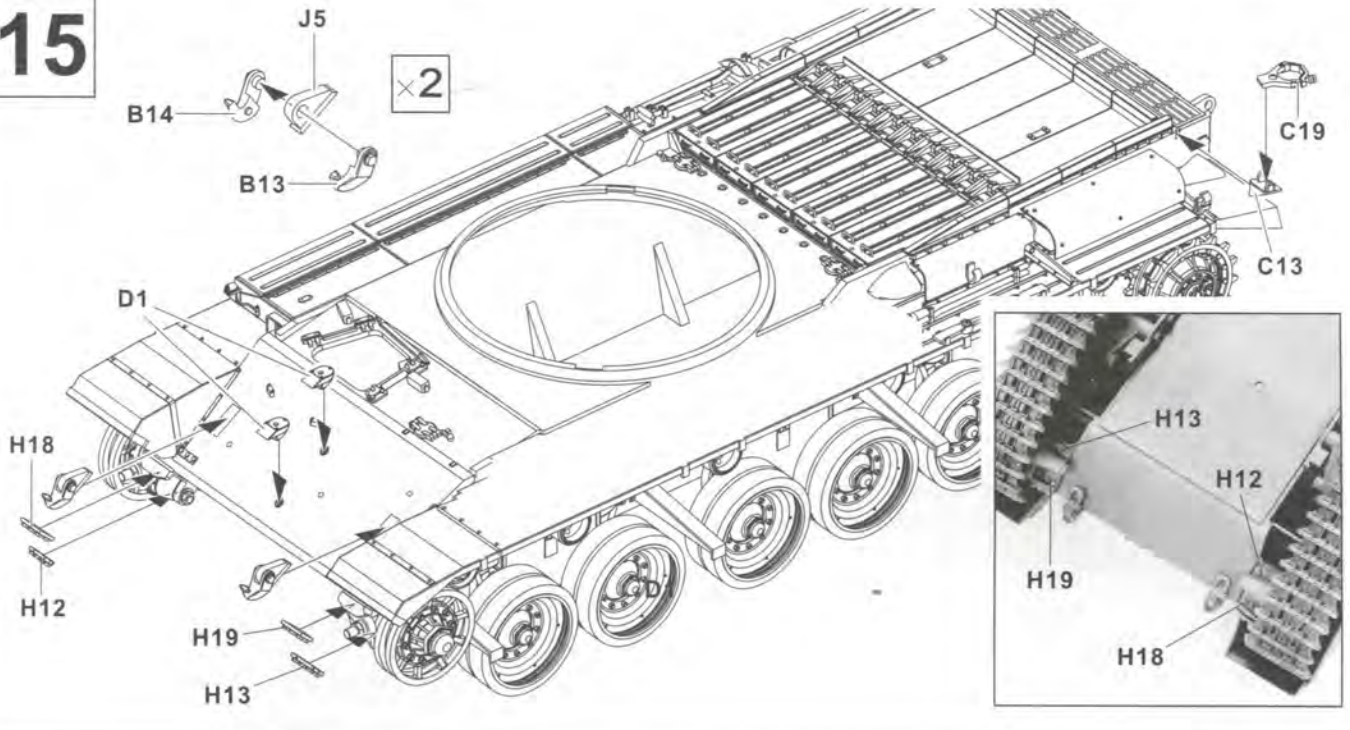


14

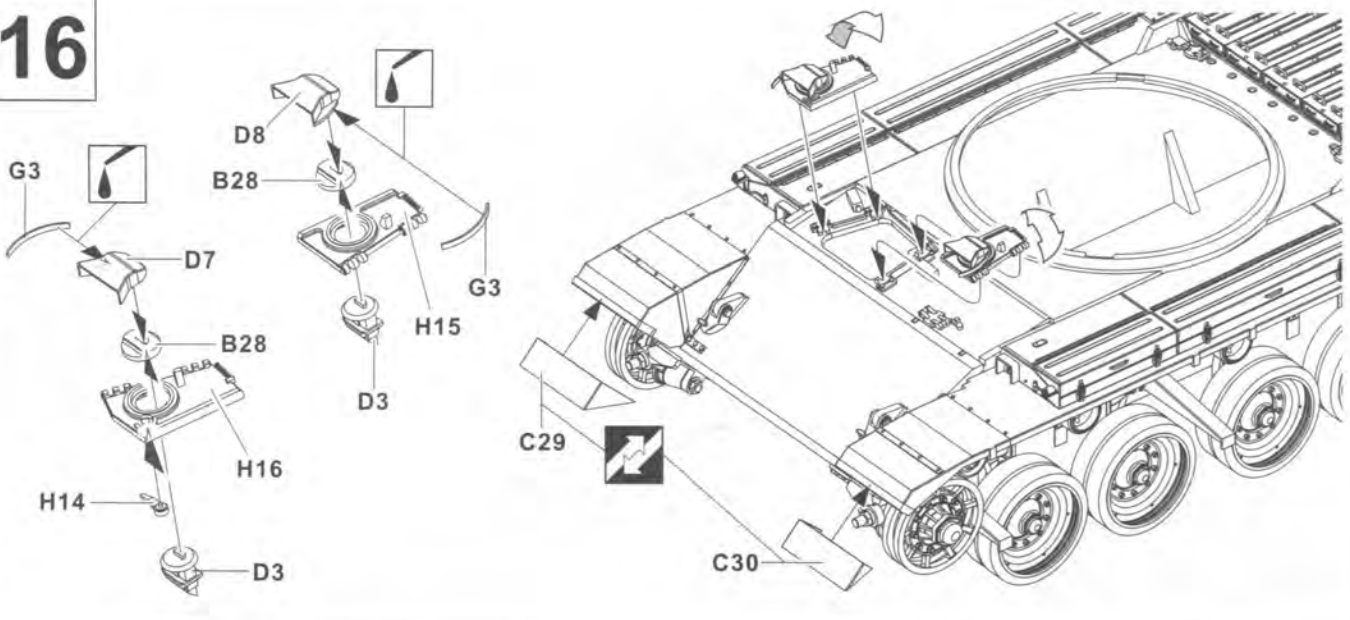




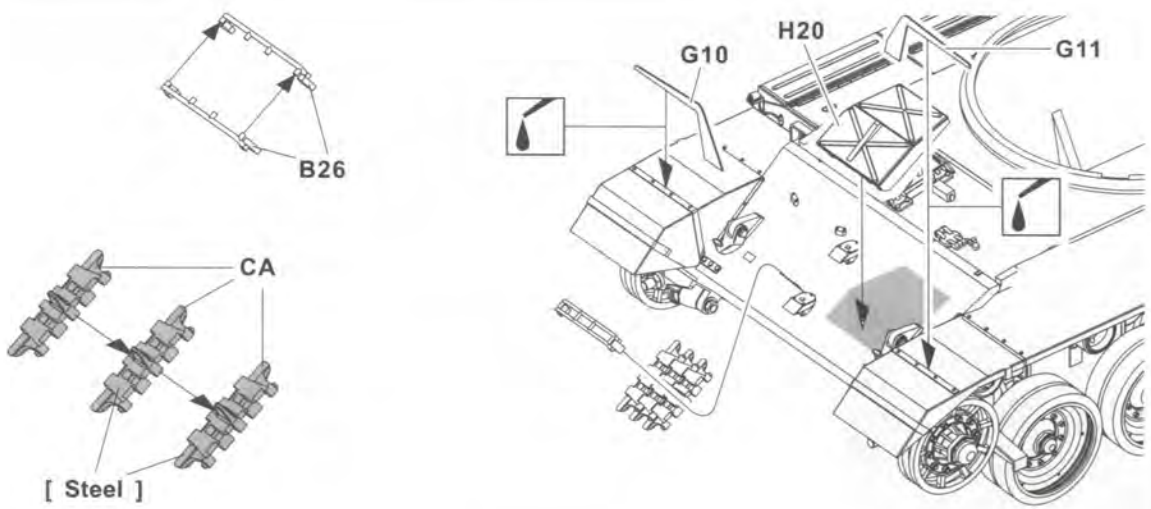
# 15



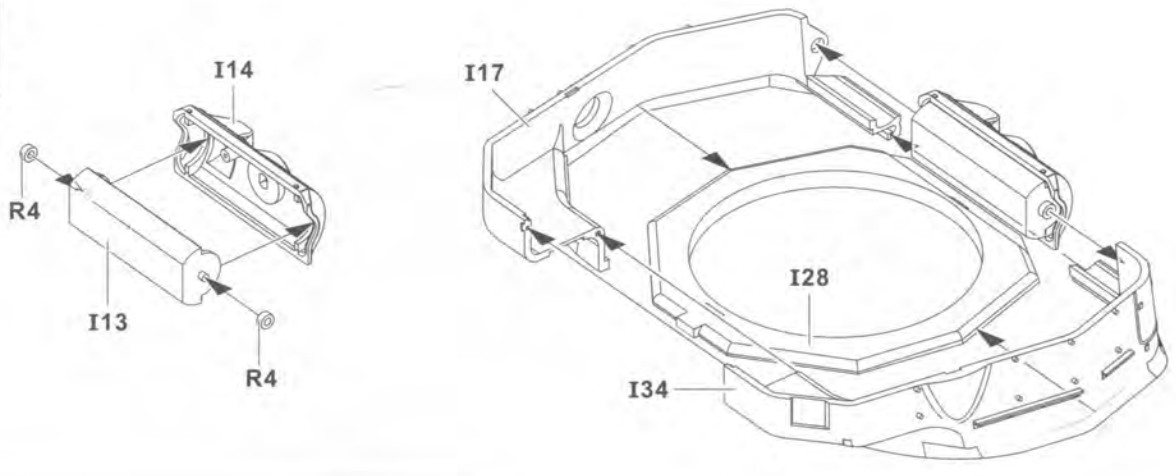
# 16



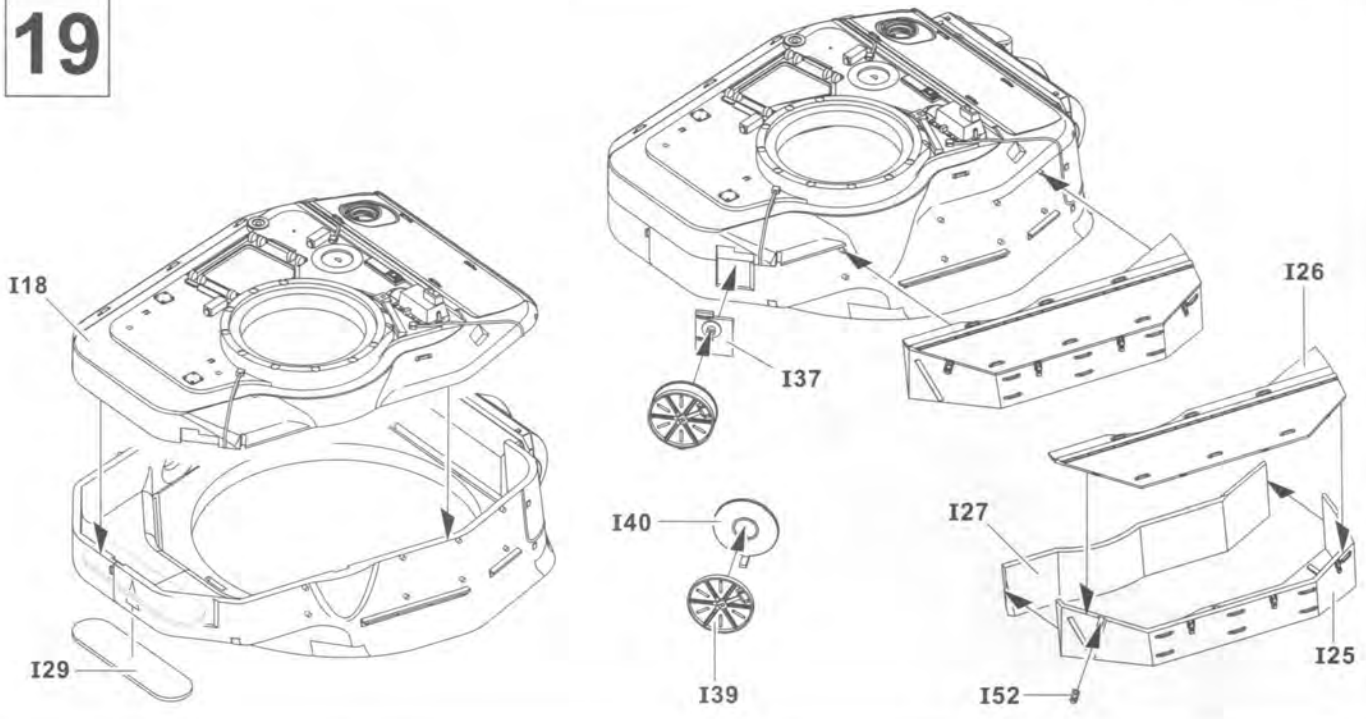
# 17



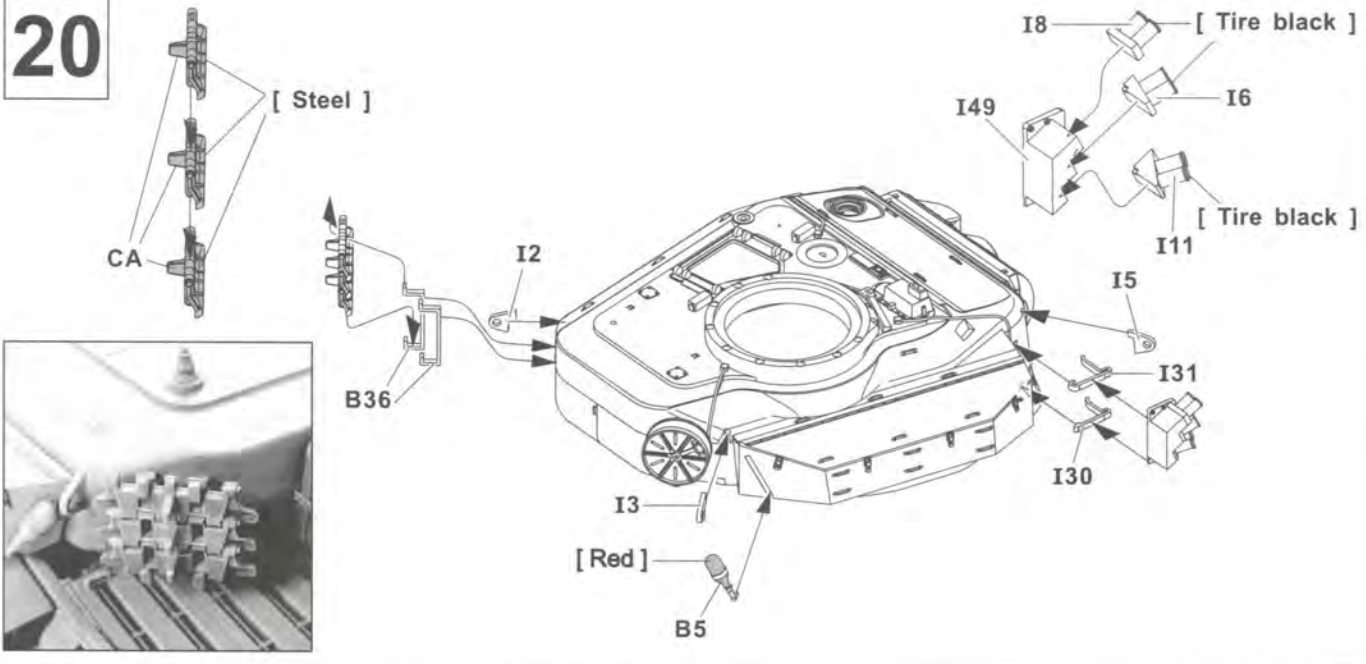
# 18



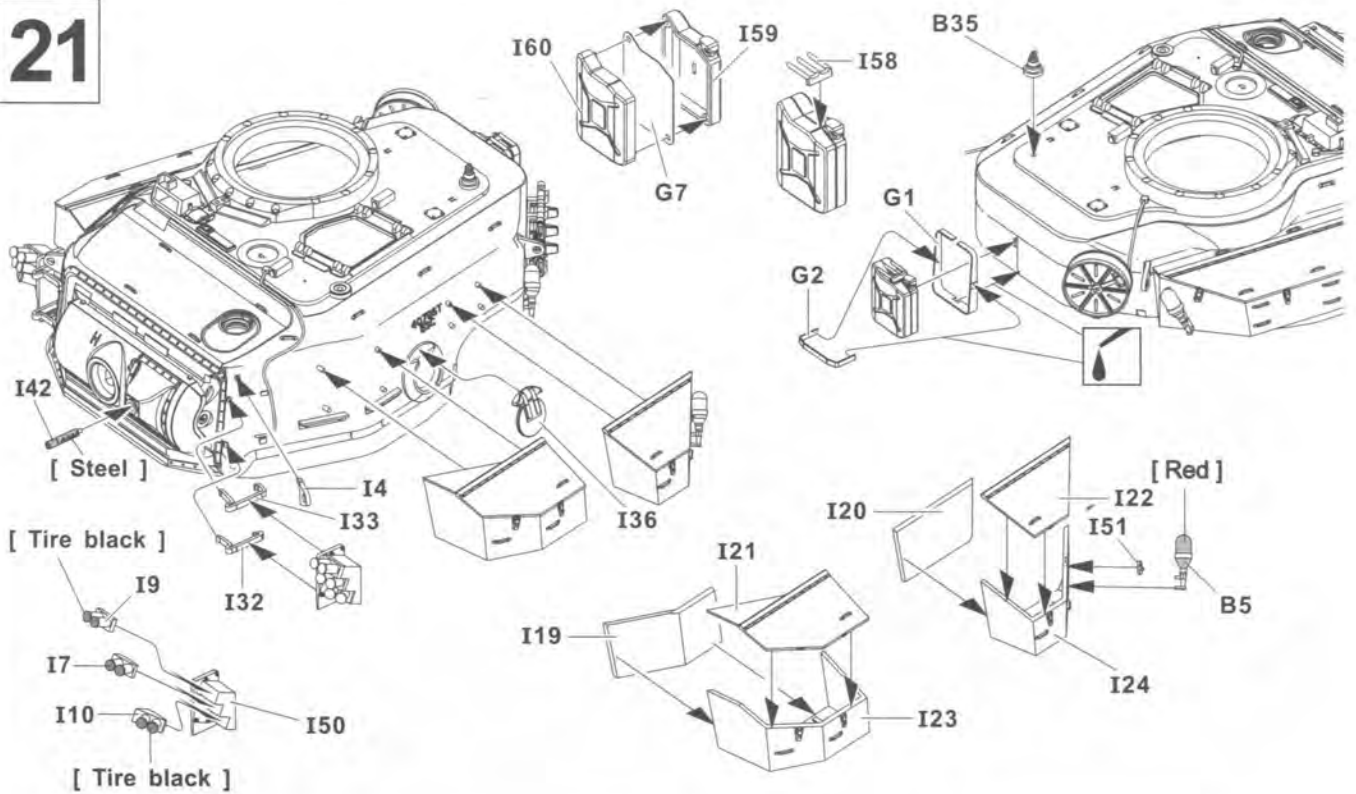
# 19



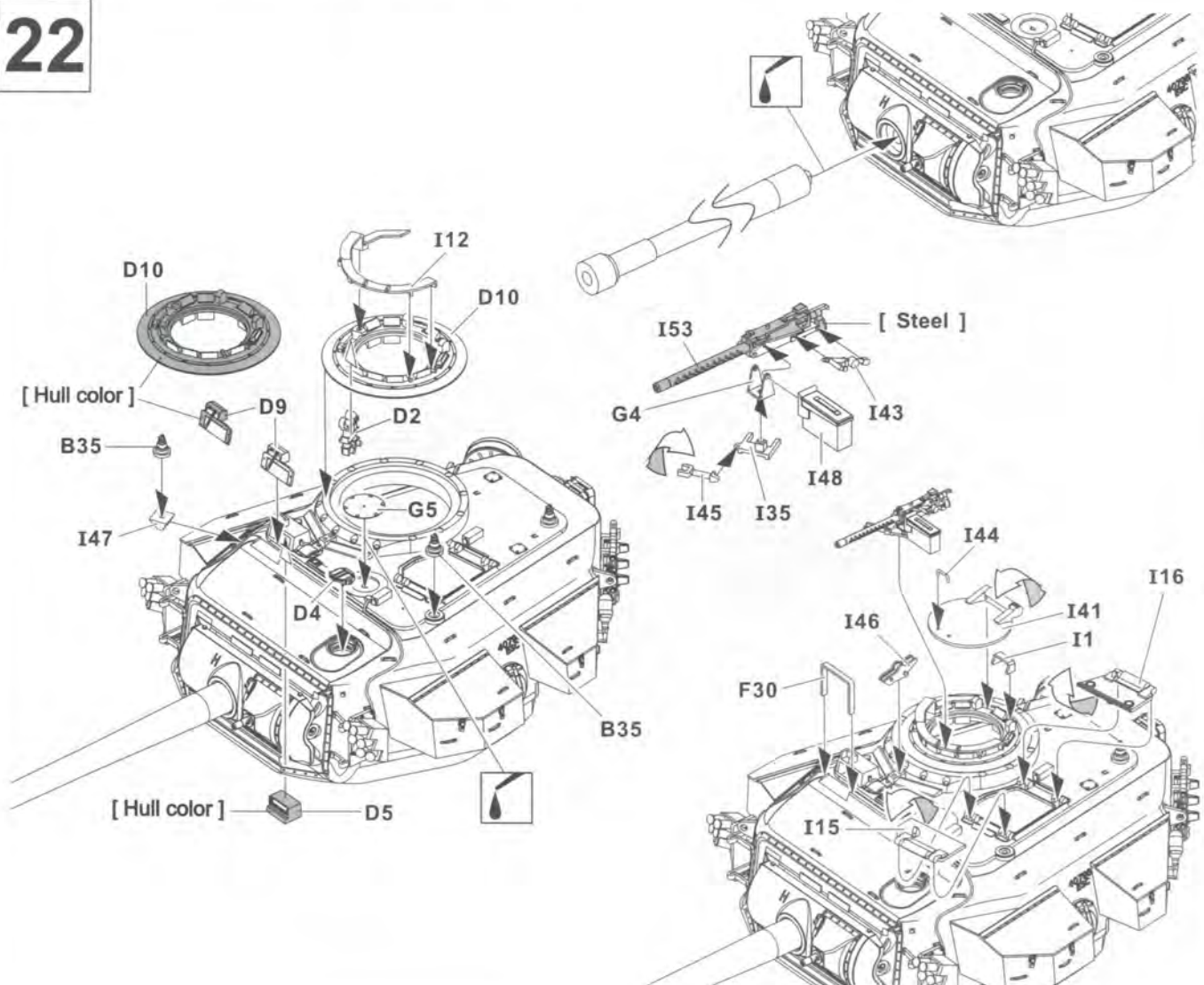
# 20



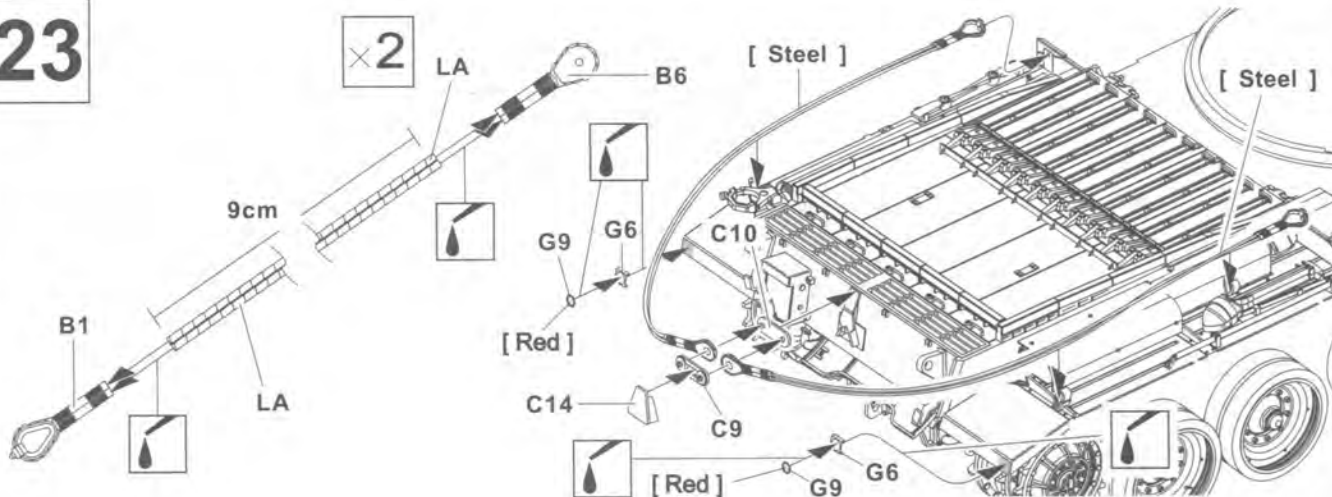
# 21



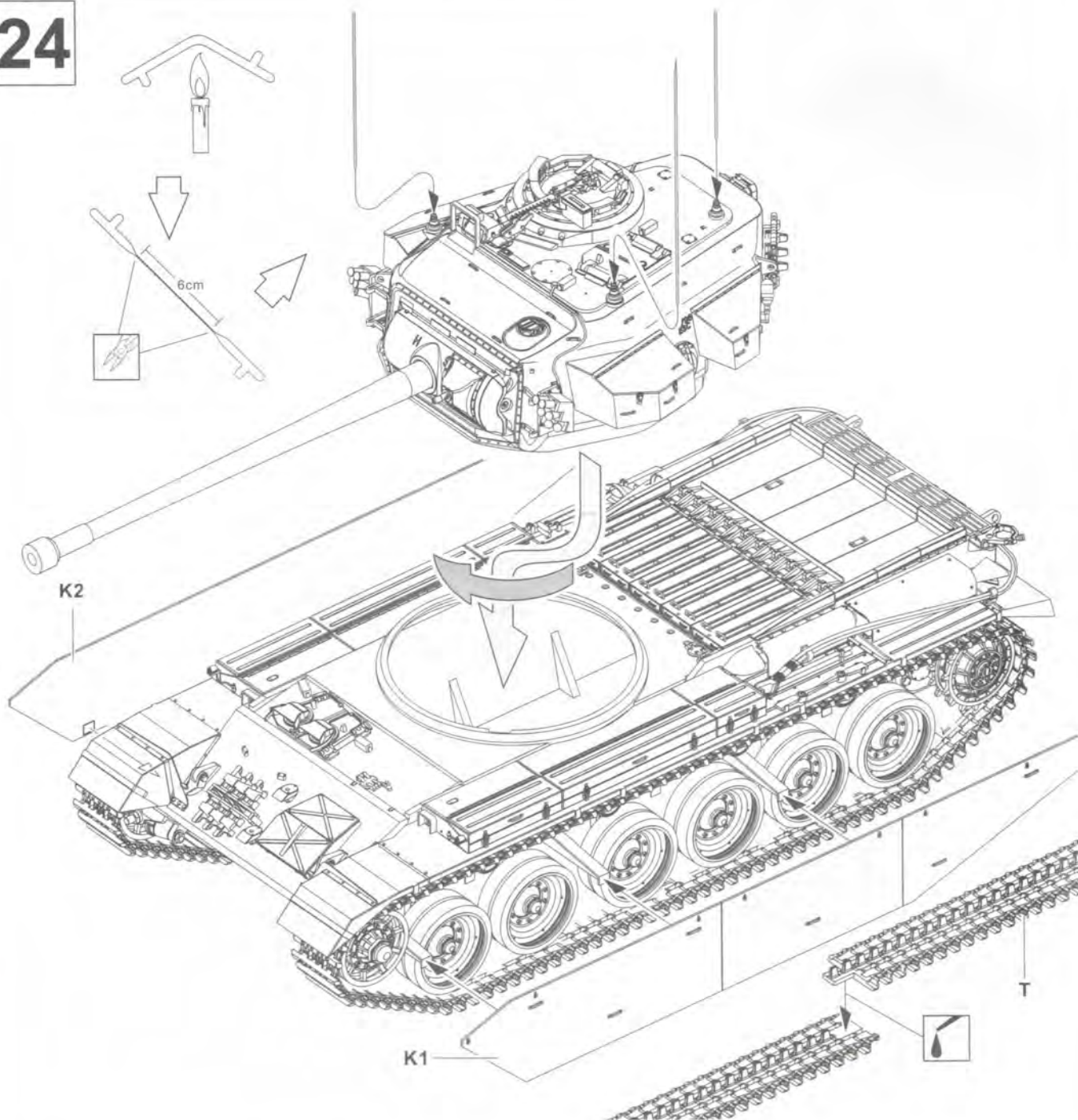
# 22



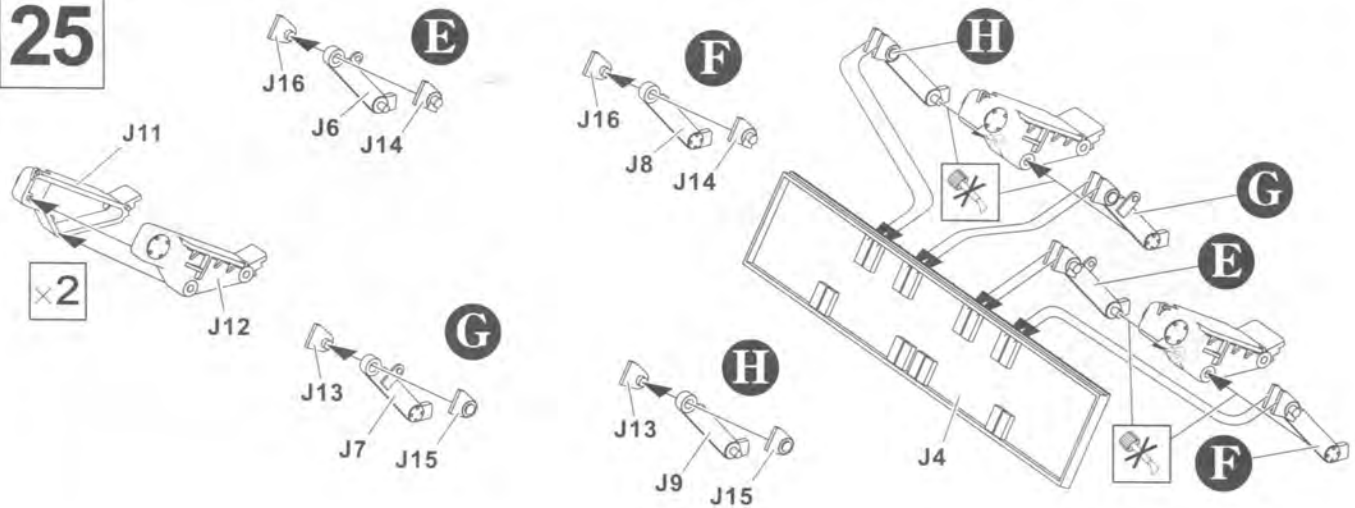
23



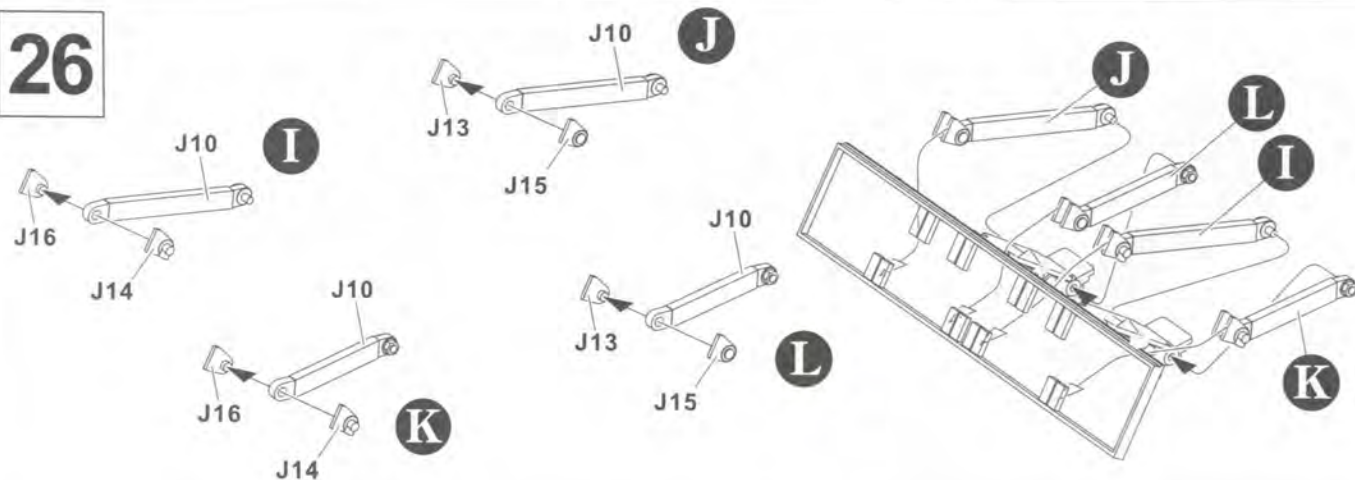
24



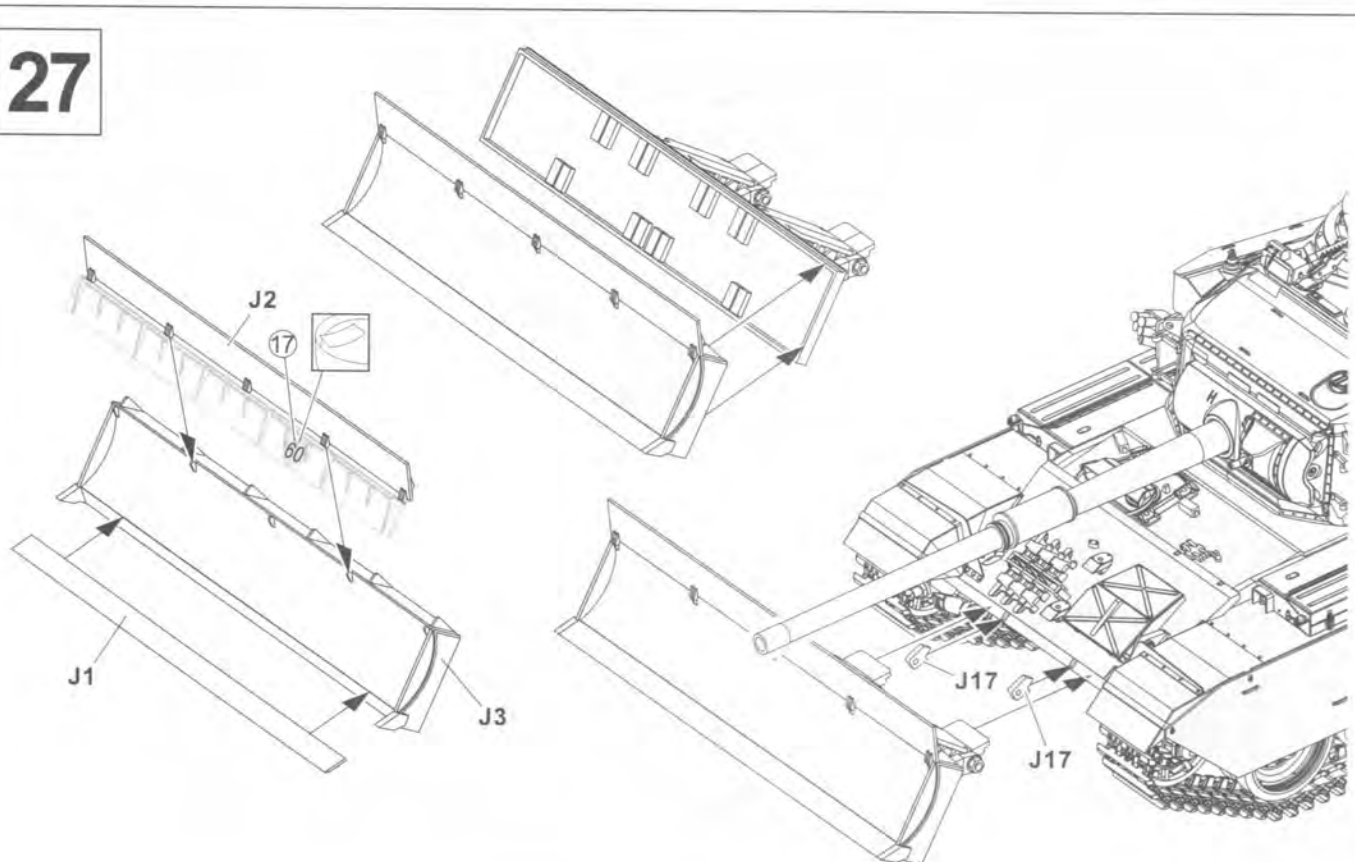
25



26

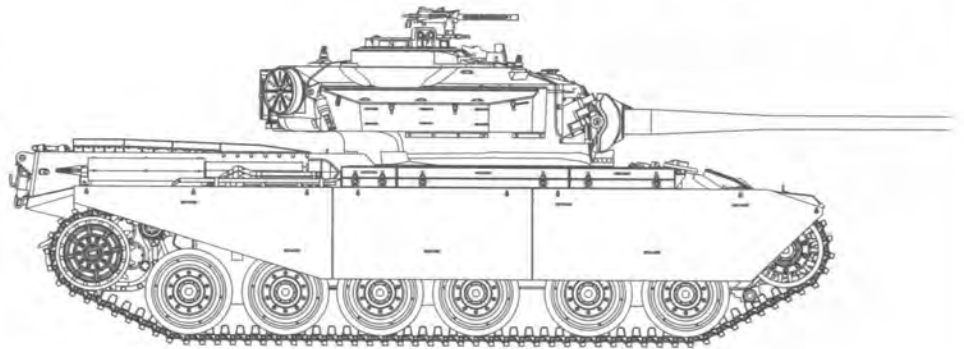
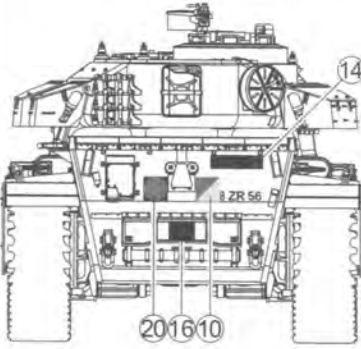
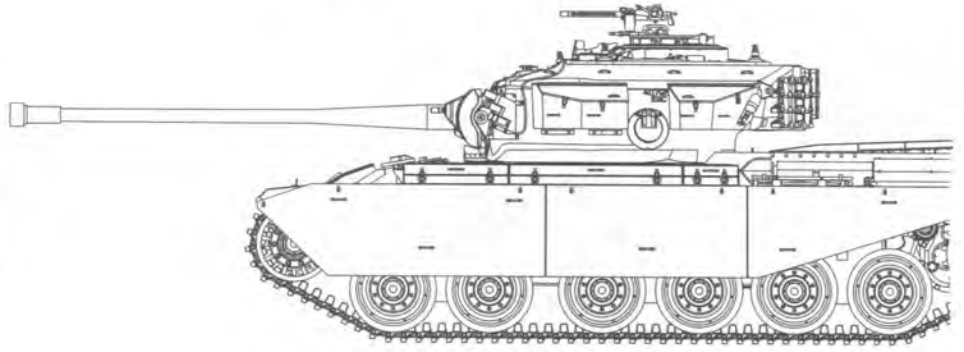
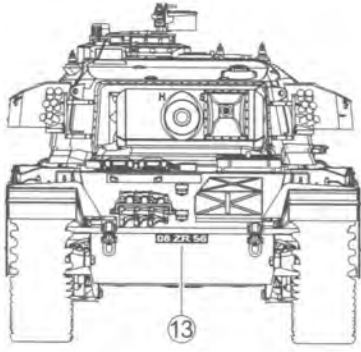


27



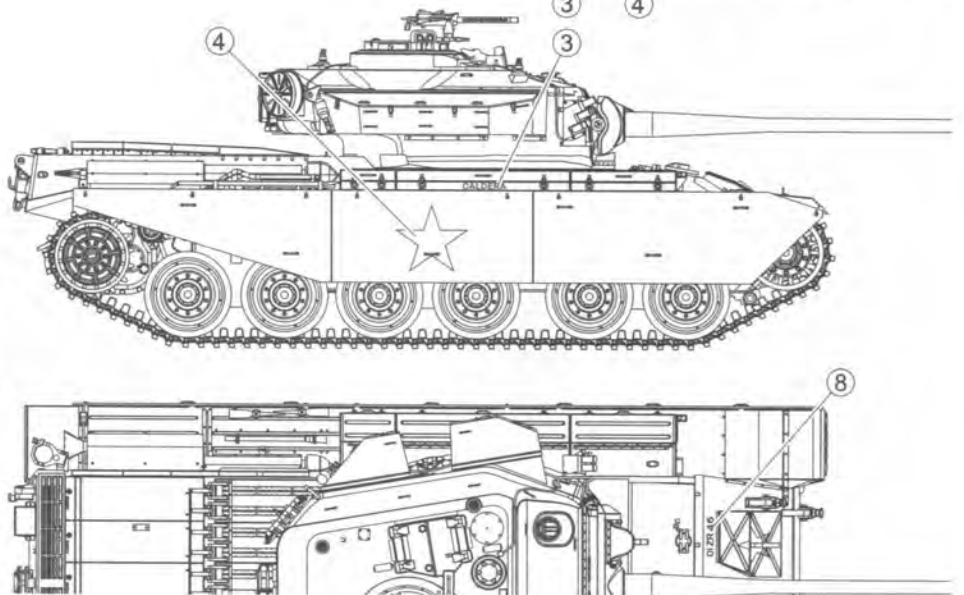
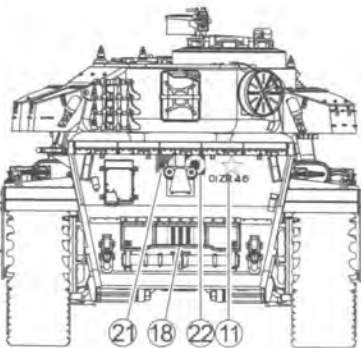
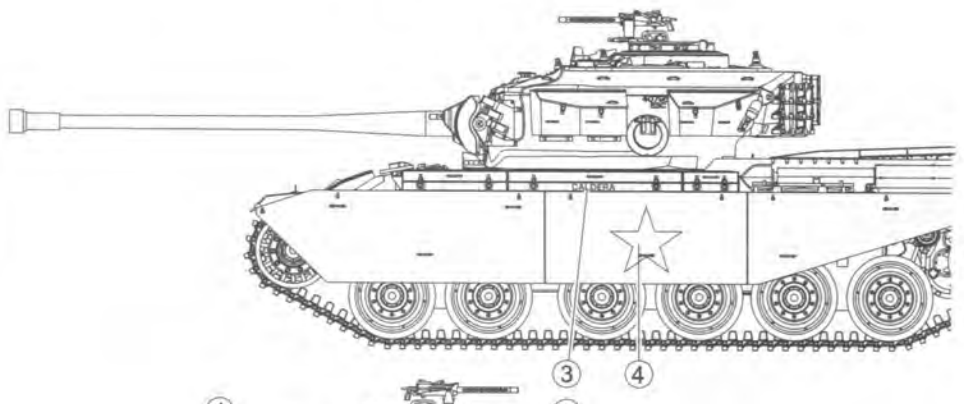
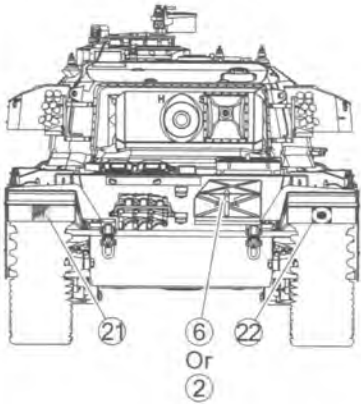
**A** British Army  
英國陸軍

 Body Color:  Dark Green



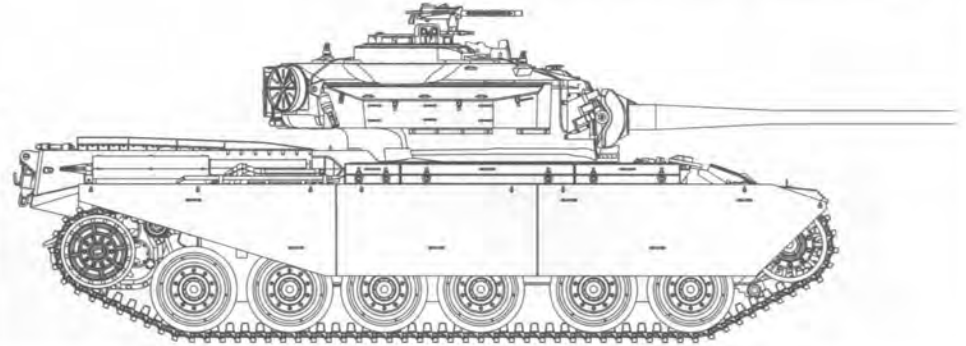
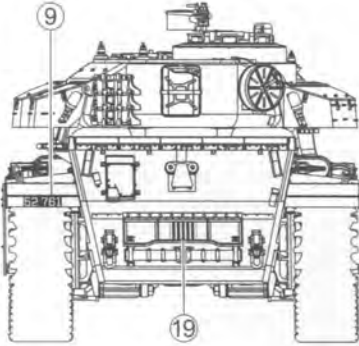
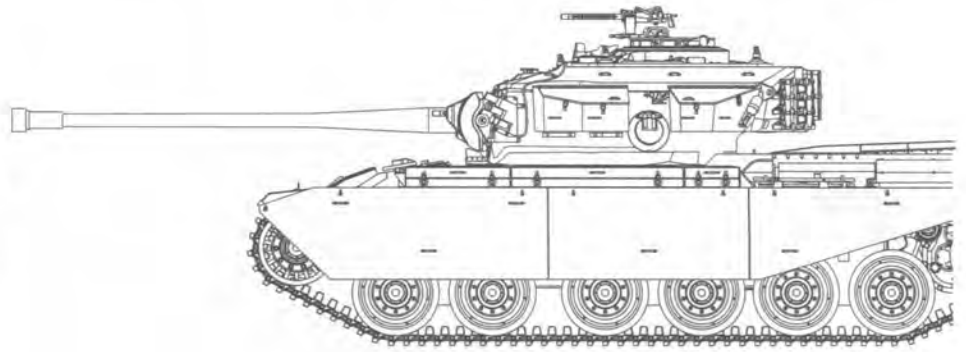
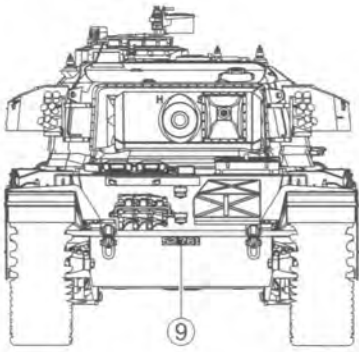
**B** British Army  
英國陸軍

 Body Color:  Dark Green



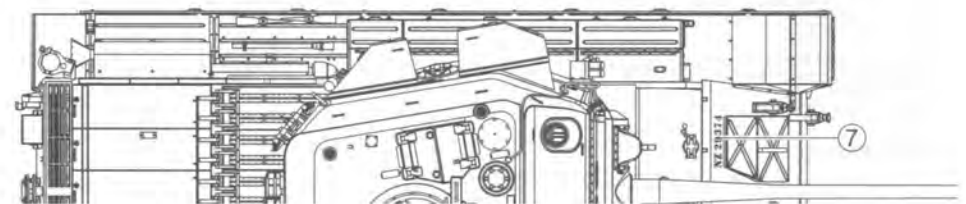
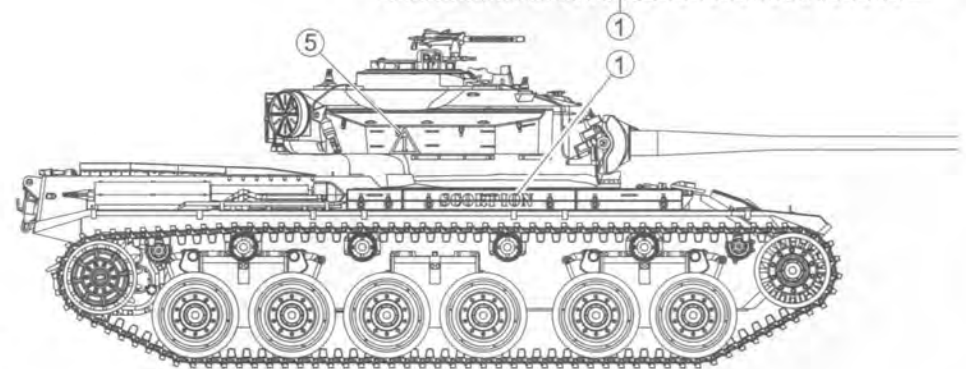
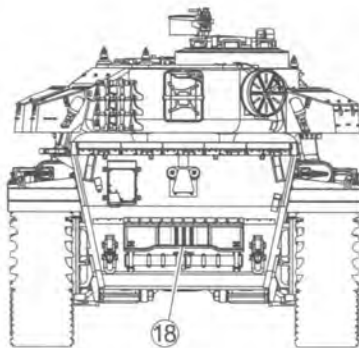
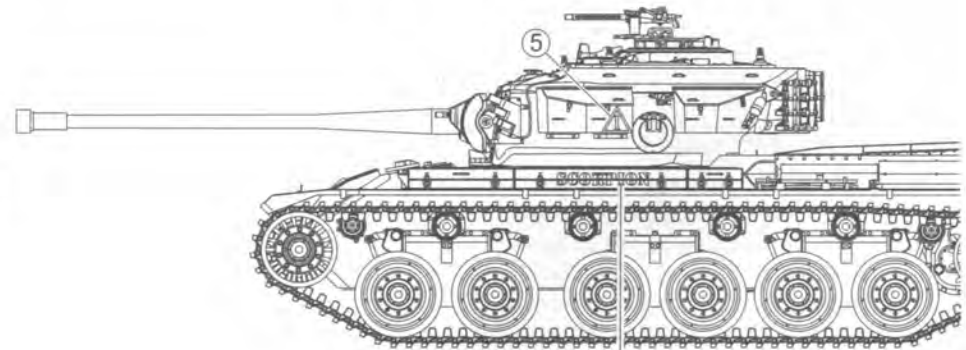
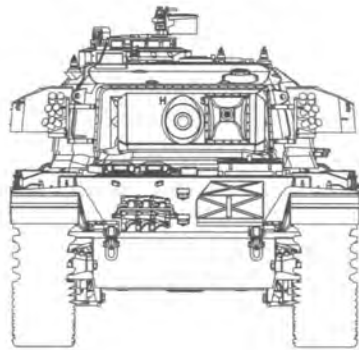
**C** Royal Danish Army  
丹麥陸軍

 Body Color:  Olive drab(2)



**D** New Zealand Army  
紐西蘭陸軍

 Body Color:  Dark Green



# PARTS LIST 零件表



Parts :	A ——— 1	E ——— 2	I ——— 1	M ——— 1
	B ——— 2	F ——— 1	J ——— 1	N ——— 1
	C ——— 1	G ——— 1	K ——— 1	R ——— 24+2
	D ——— 1	H ——— 1	L ——— 1	K ——— 1
				T ——— 2



### Instructions:

If for some reason, you are not fully satisfied or have questions concerning our product; Please use the form provide, and send it to our nearest representative or mail it directly to our office.

We will deal with that A.S.A.P.

### 限台灣地區使用 For Taiwanese use only!

總代理：戰鷹企業有限公司收本公司將儘速為您處理。  
請將本表與該部品相同金額之郵政匯票一同寄至。



**AF 35106**  
零件補充申請表

申請人  
姓名 地址 電話  
: : :

- A部品零件 ——— NT\$ 100
- B部品零件 ——— NT\$ 300
- C部品零件 ——— NT\$ 260
- D部品零件 ——— NT\$ 80
- E部品零件 ——— NT\$ 300
- F部品零件 ——— NT\$ 160
- G部品零件 ——— NT\$ 80
- H部品零件 ——— NT\$ 180
- I部品零件 ——— NT\$ 300
- J部品零件 ——— NT\$ 220
- K部品零件 ——— NT\$ 160
- L部品零件 ——— NT\$ 160
- M部品零件 ——— NT\$ 300
- N部品零件 ——— NT\$ 120
- R部品零件 ——— NT\$ 160
- T部品零件 ——— NT\$ 160
- + 郵寄費 ——— NT\$ 80

(請填) 總計 NT\$ \_\_\_\_\_

零件補充原因:(請於□打√)  
原包裝即□遺失或□毀損,  
製作途中□遺失或□毀損,  
其他原因 \_\_\_\_\_



**AF 35106**  
Parts Replacement Form

- A parts
- B parts
- C parts
- D parts
- E parts
- F parts
- G parts
- H parts
- I parts
- J parts
- K parts
- L parts
- M parts
- N parts
- R parts
- T parts

Reason for replacement:  Missing  broken

Signature: \_\_\_\_\_

