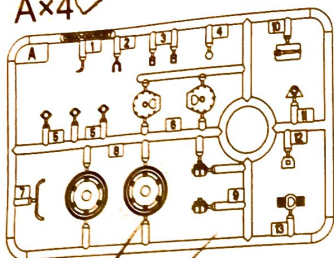
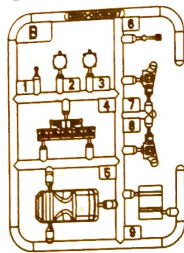


部品图 Part

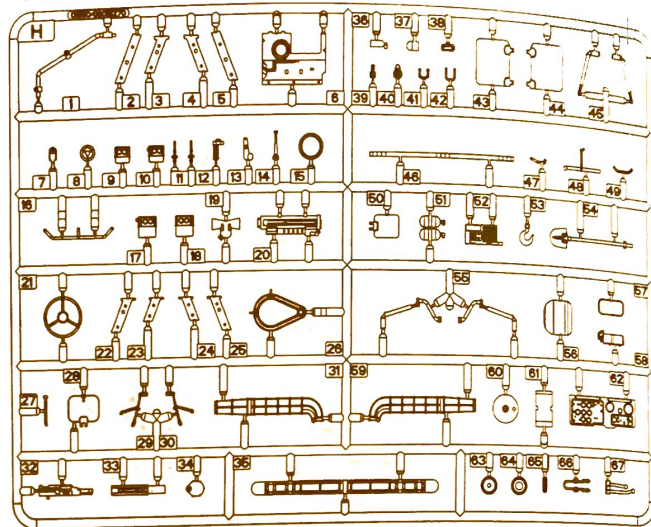
Ax4 ✓



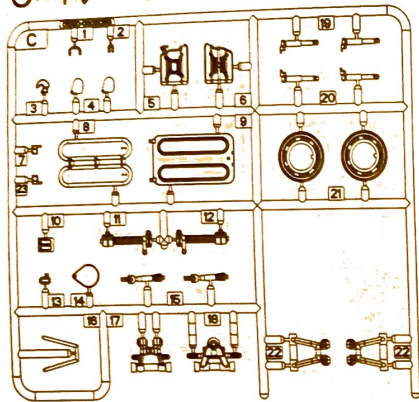
Bx2 ✓



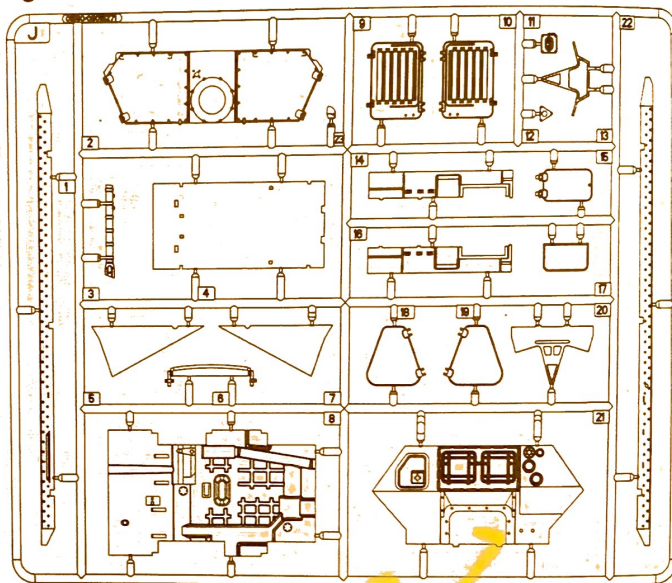
Hv ✓



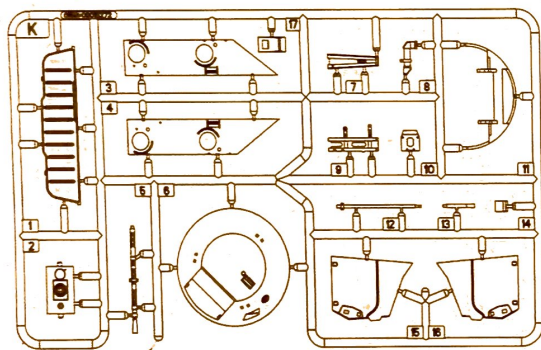
Cx4 ✓



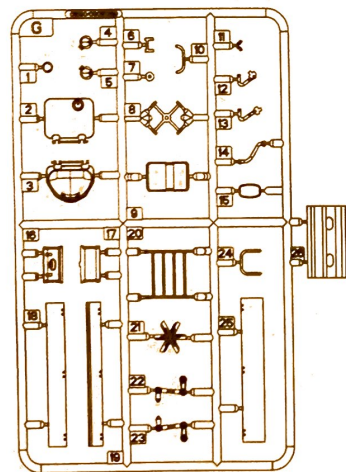
Jv ✓



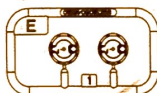
Kv ✓



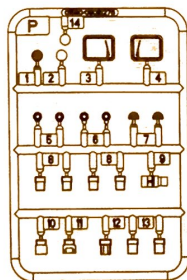
Gx2 ✓



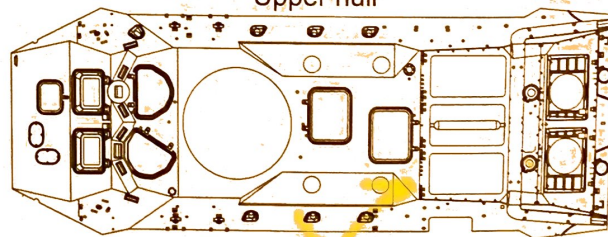
Ex4 ✓



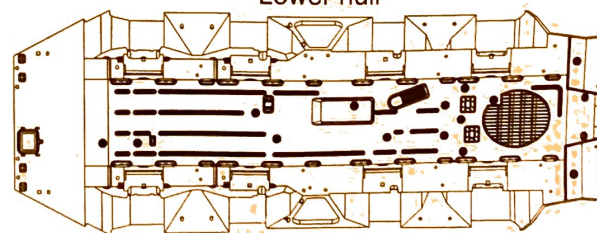
Pv ✓



《车面》
Upper hull



《车底》
Lower hull



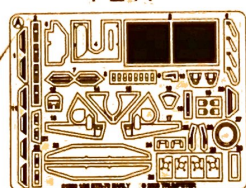
《轮胎》
Tyre x8 ✓



《聚乙烯套》
Poly cap



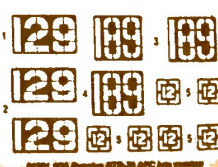
《蚀刻片》
PE-A ✓



《蚀刻片》
PE-B ✓



《水贴》
Decal



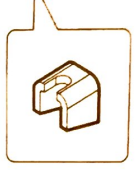
不用部品: P6、P10、K17、PE-B1、PE-B2、PE-B3、PE-B5
Unused parts

1

弯曲 Bend PE-A1
 弯曲 Bend PE-A11
 弯曲 Bend PE-A20
 弯曲 Bend PE-A11
 弯曲 Bend PE-A1

选择 Option
 切除 Cut / Remove
 弯曲 Bend PE-A21
 选择 Option

选择 Option

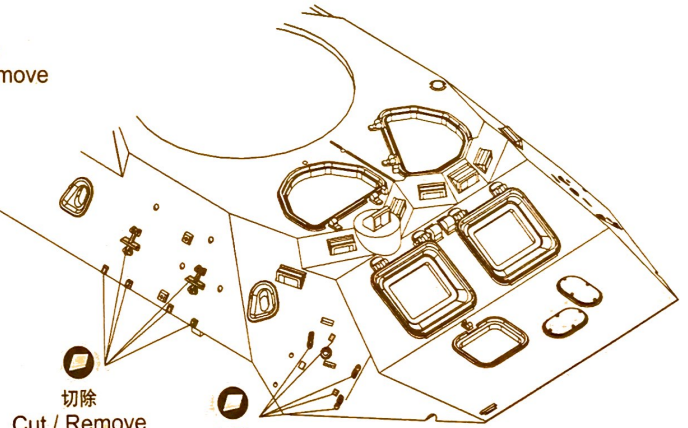


选择 Option

切除 Cut / Remove

切除 Cut / Remove
 填平 Fill

切除 Cut / Remove

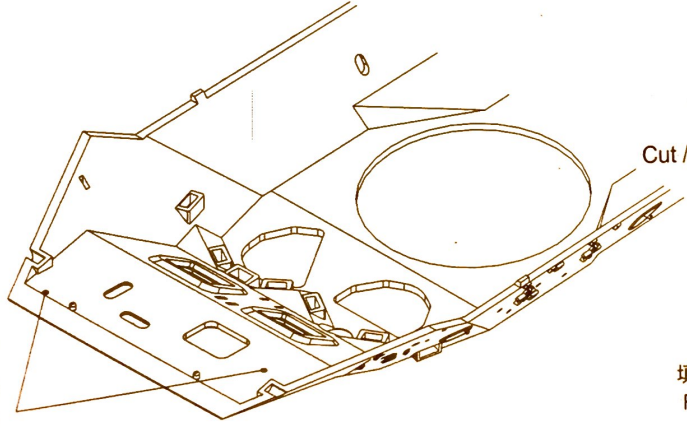


切除 Cut / Remove

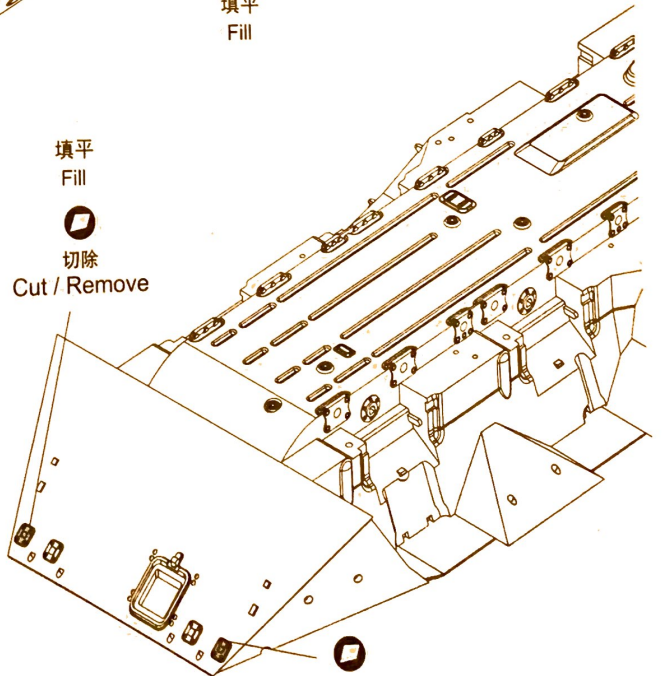
切除 Cut / Remove
 填平 Fill

选择 Option

① 钻孔 Make holes

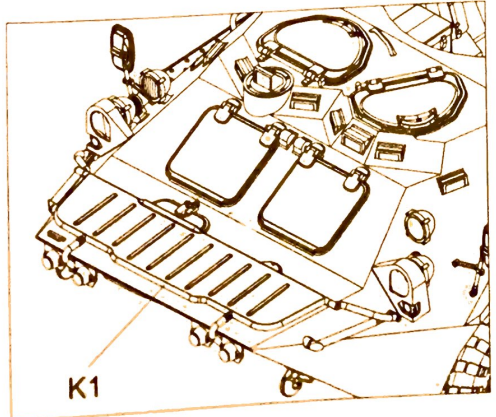


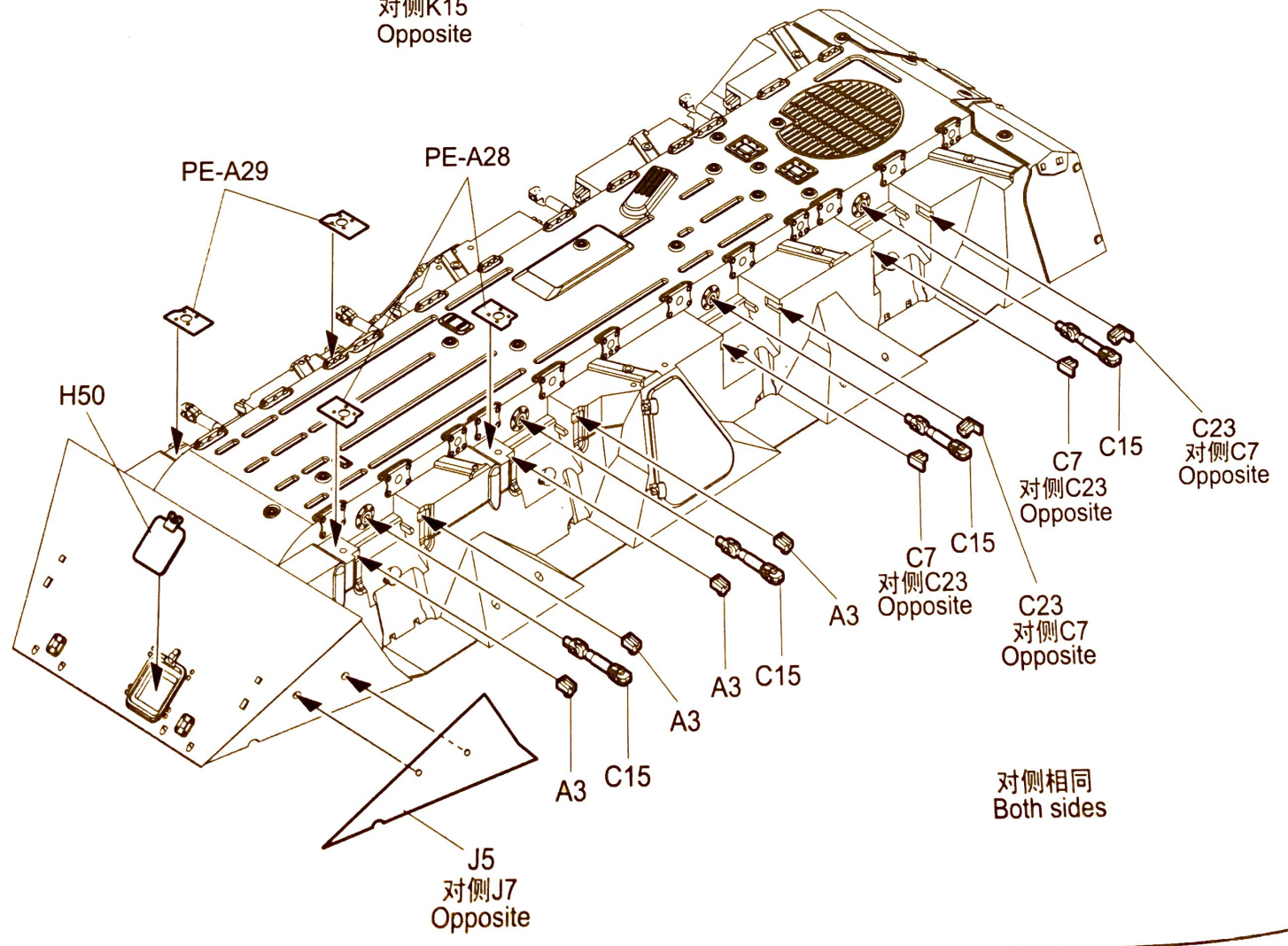
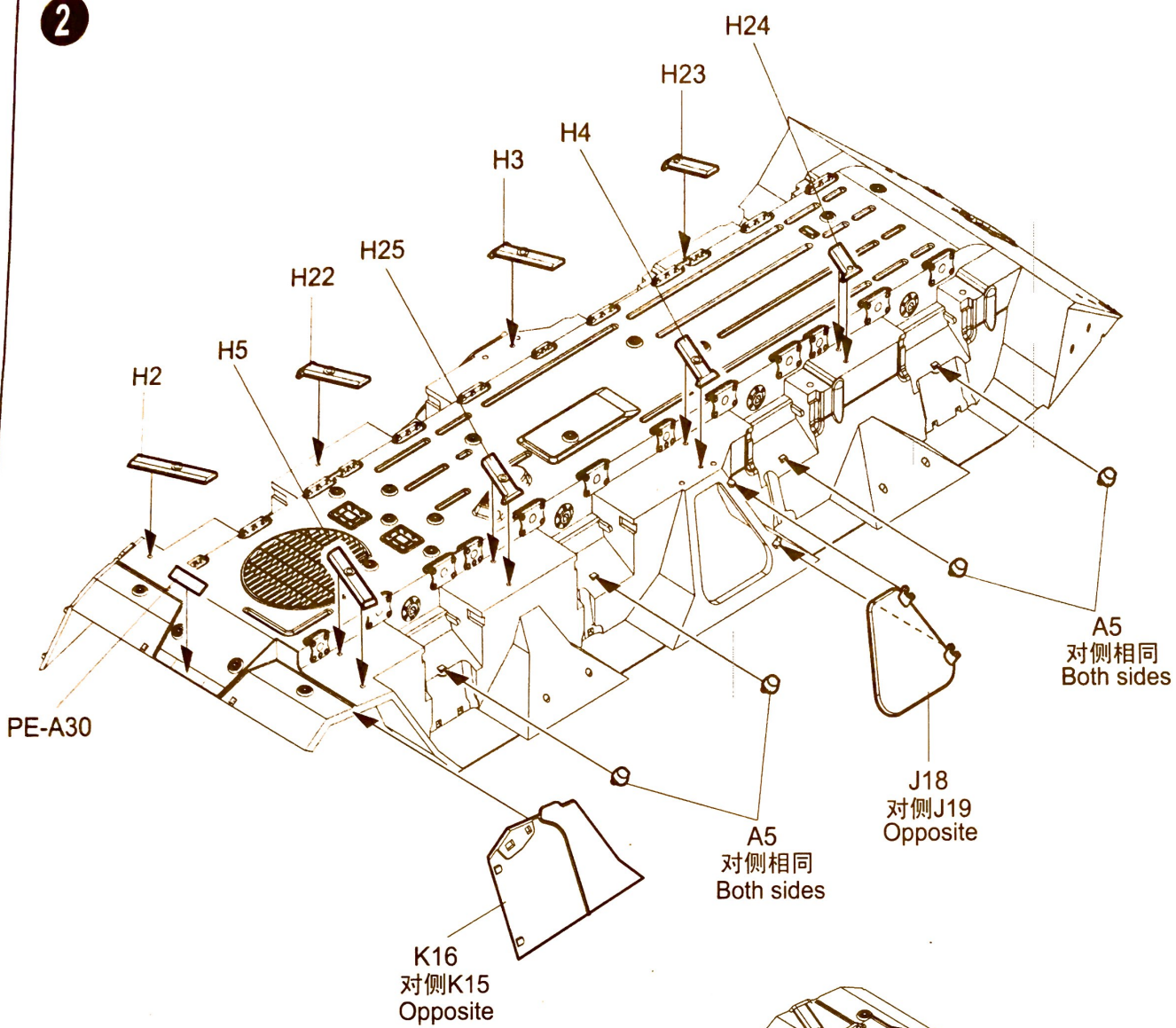
填平 Fill
 切除 Cut / Remove

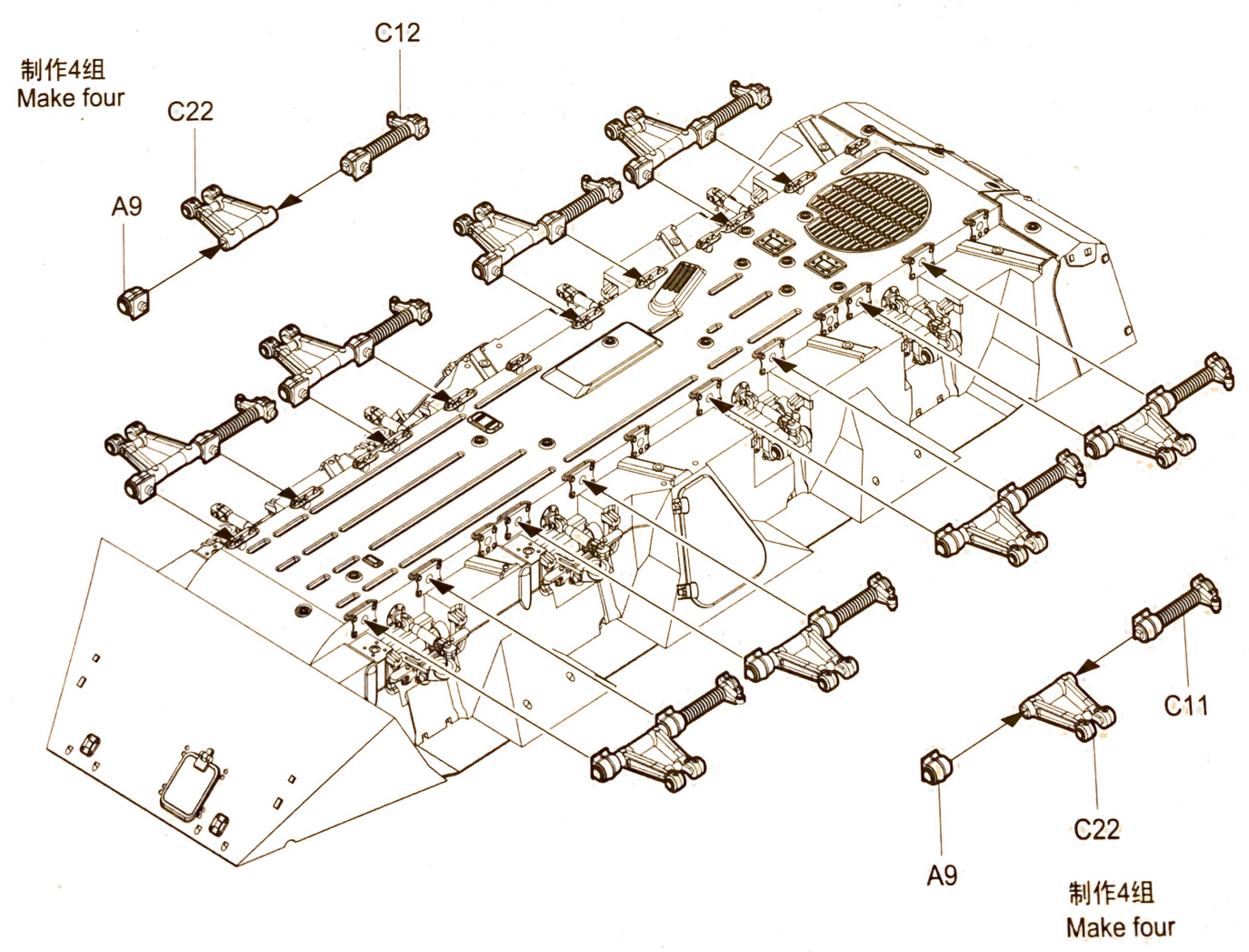
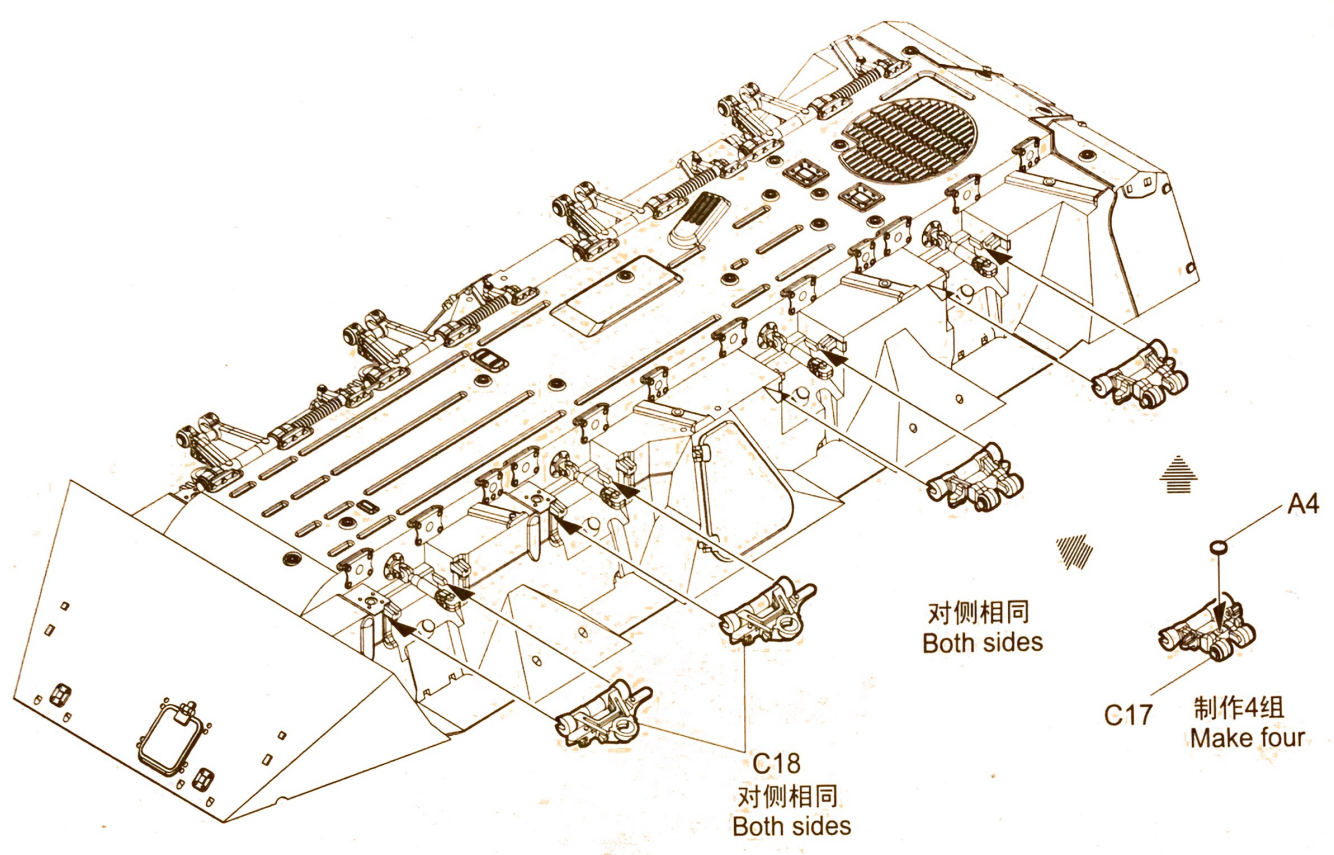


切除 Cut / Remove
 填平 Fill

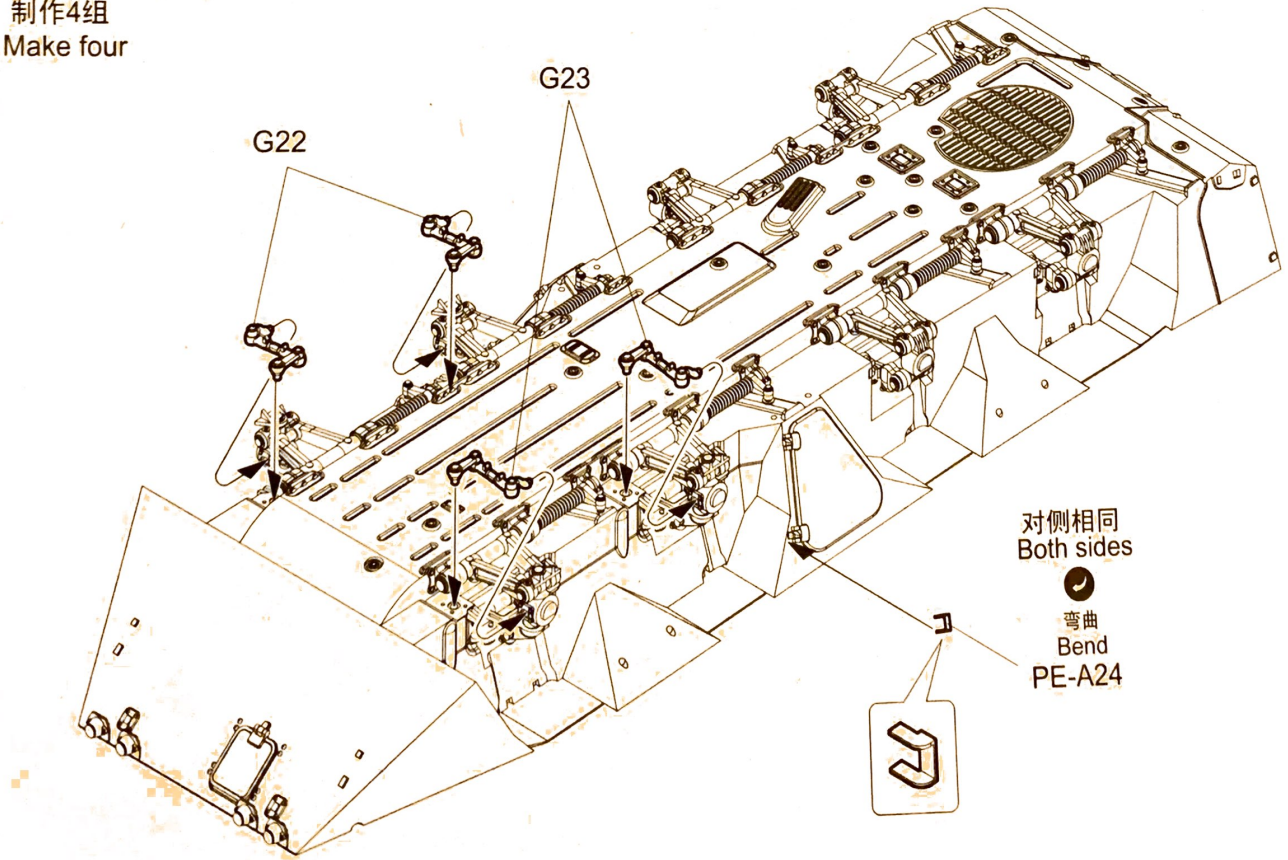
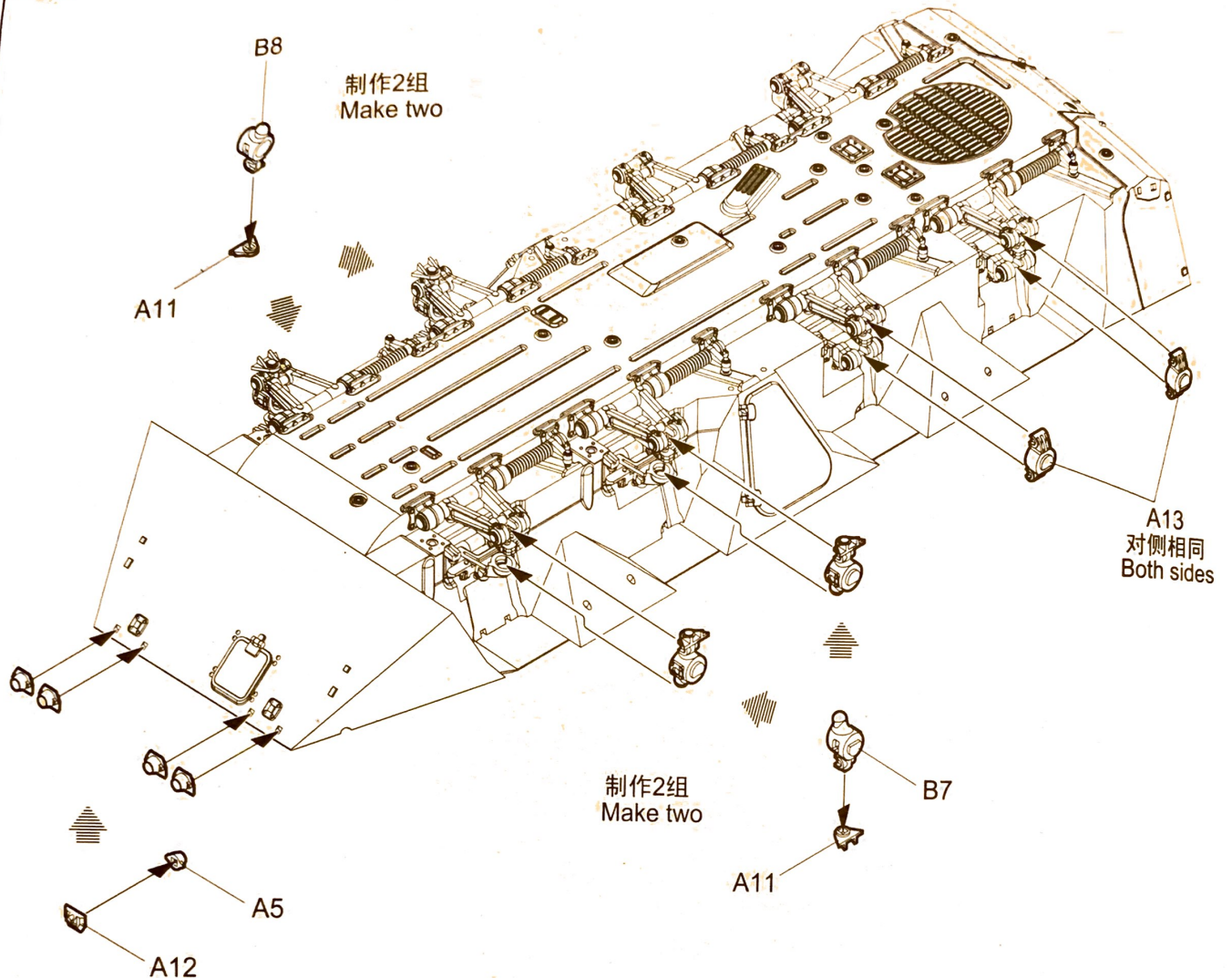
选择 Option
 K1 收起状态，车面开孔，参考第14页。
 K1 close, upper hull make holes, refer to the 14 page.

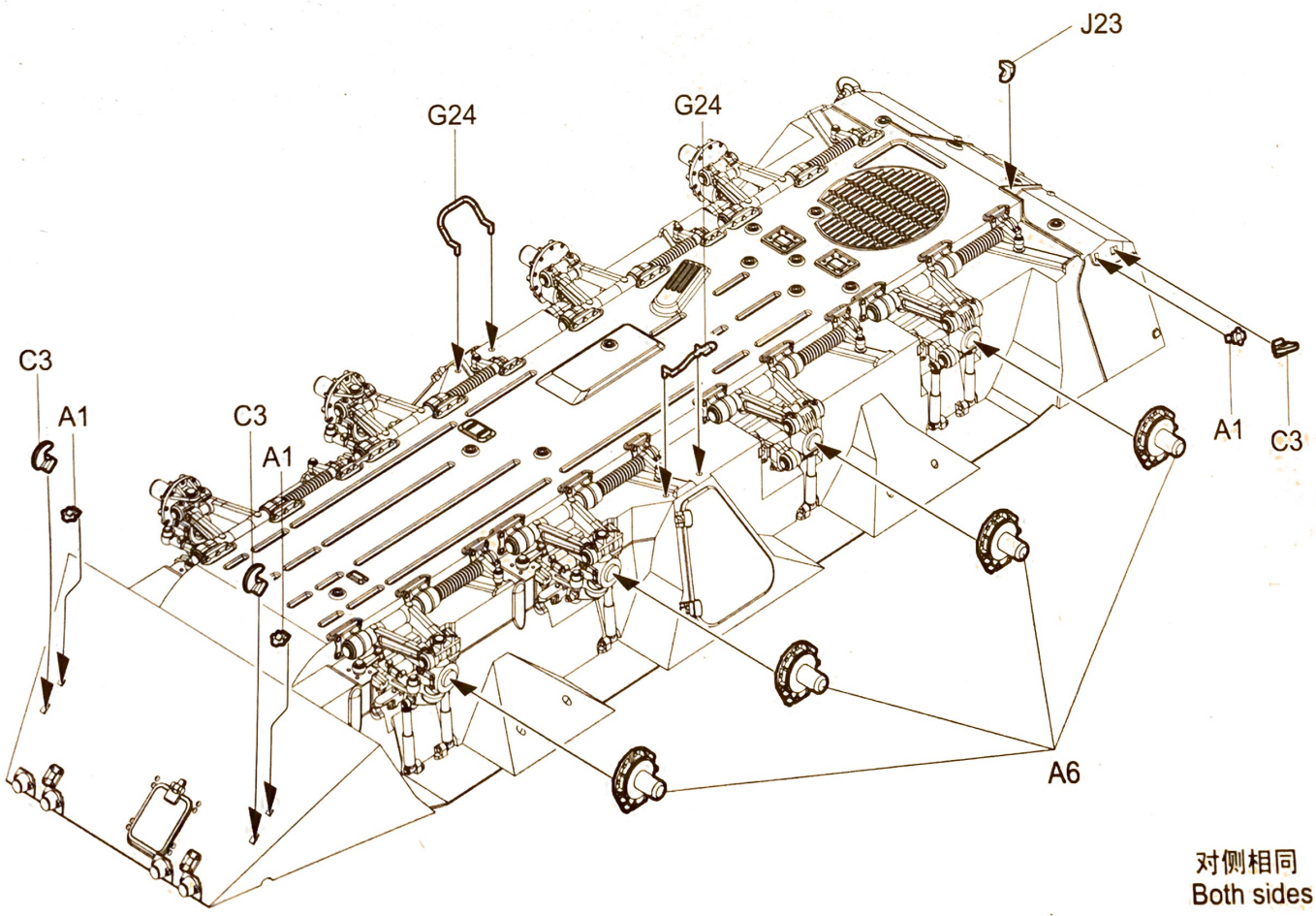
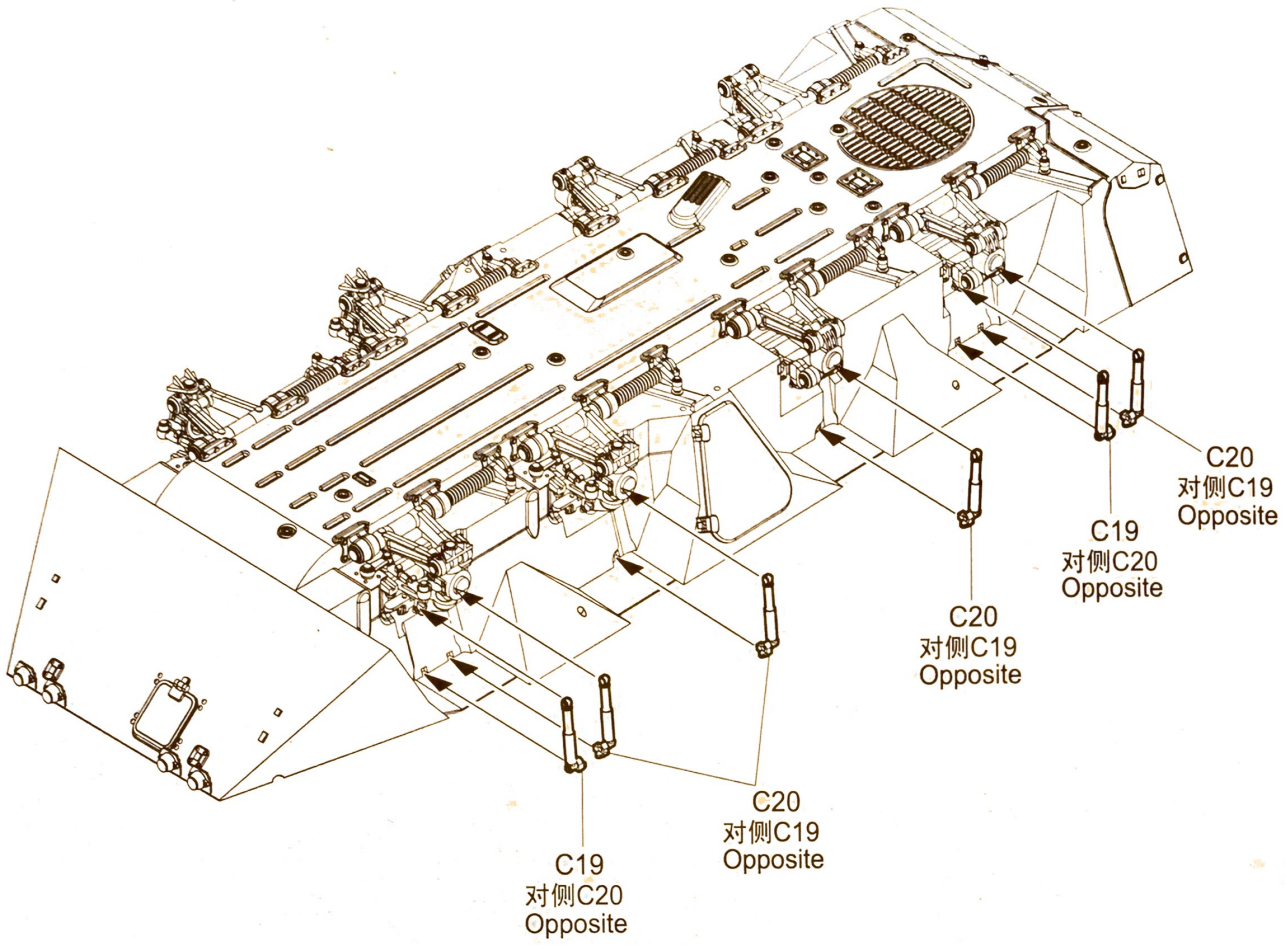






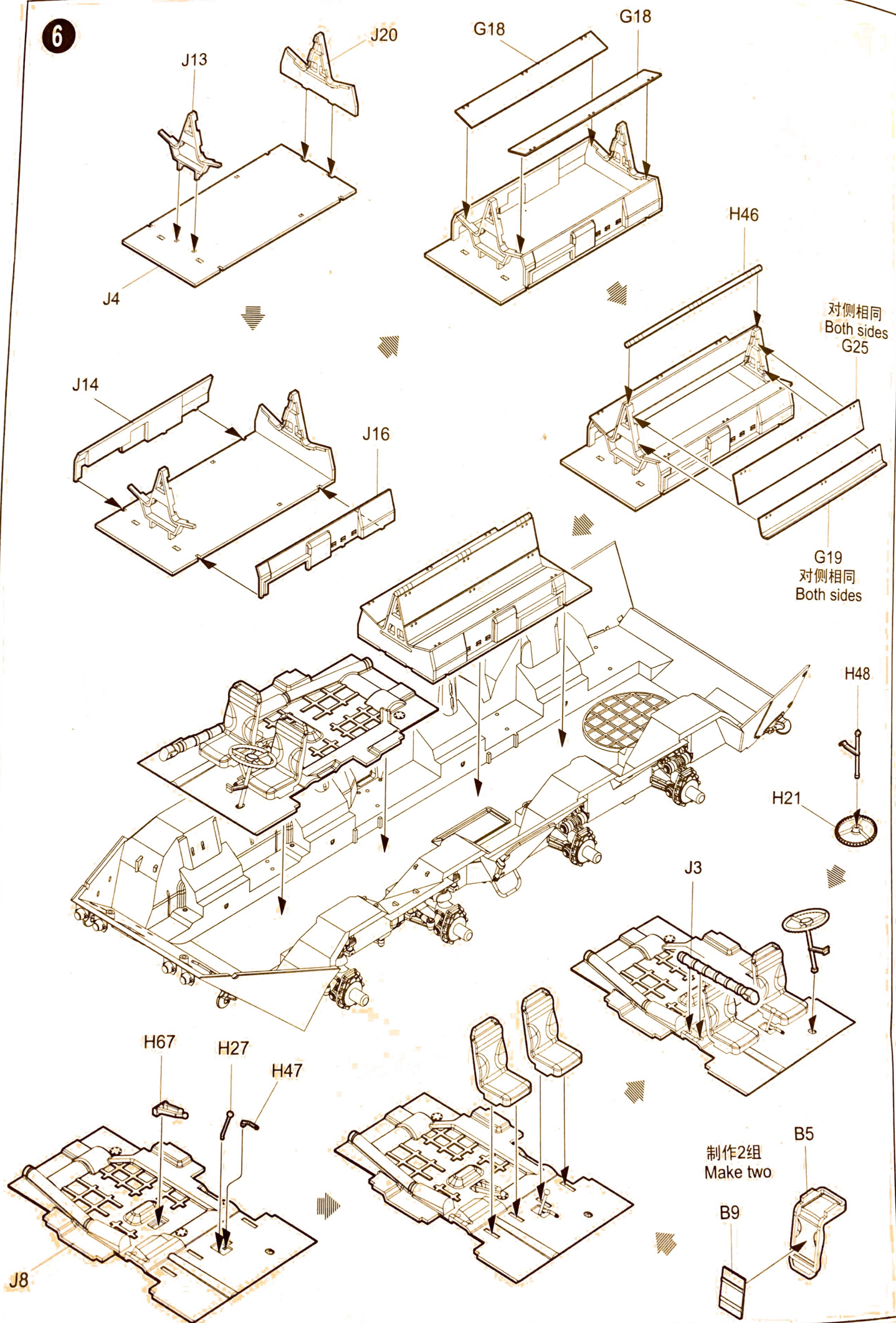
4





对侧相同
Both sides

6



7

切除
Cut / Remove

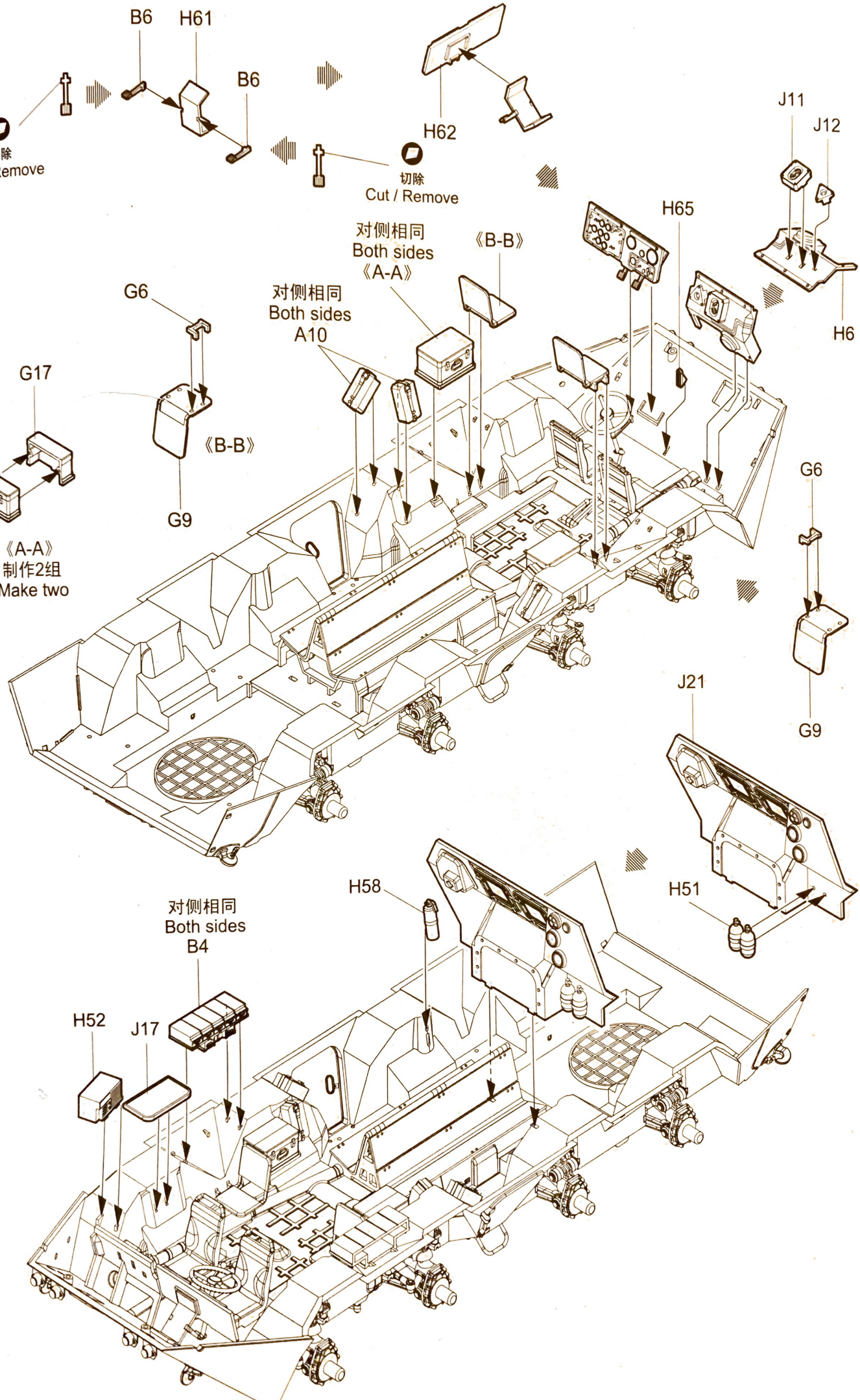
切除
Cut / Remove

对侧相同
Both sides
《A-A》

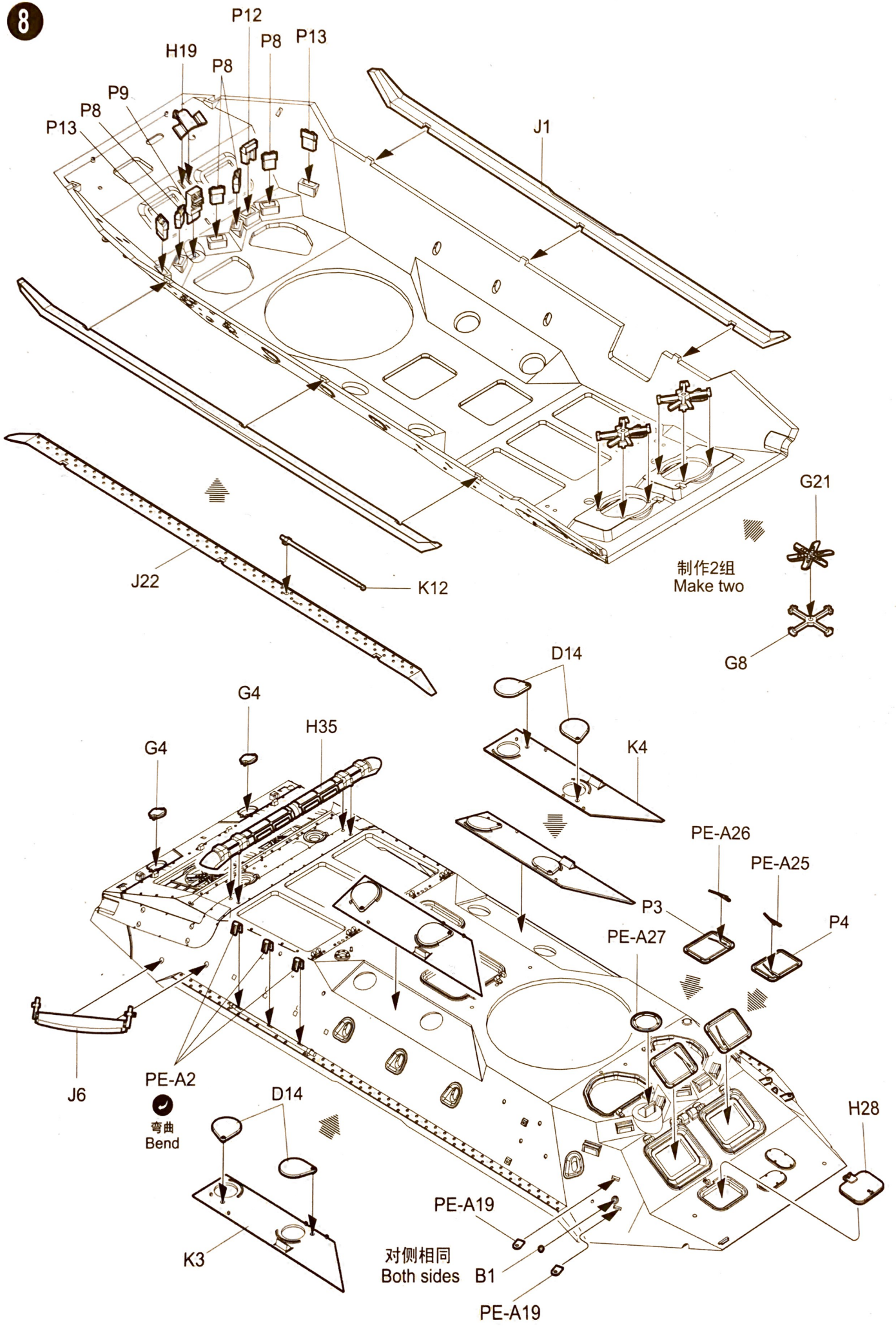
对侧相同
Both sides
A10

《A-A》
制作2组
Make two

对侧相同
Both sides
B4



8



制作3组
Make three

制作2组
Make two

对侧相同
Both sides

弯曲
Bend
PE-A12

P7

C9

C8

C1

G5

G5

H43

H44

H54

PE-A8

J15

弯曲
Bend

P2

B3

打开状态
Open

关闭状态
Close

C13

PE-A6

弯曲
Bend
PE-A23

打开状态
Open

关闭状态
Close

C13

PE-A6

选择
Option

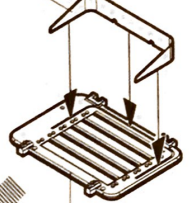
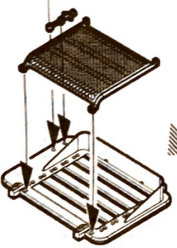
H11

选择
Option

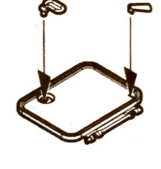
制作2组
Make two

制作2组
Make two

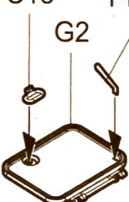
弯曲
Bend
PE-A5



J10



选择
Option

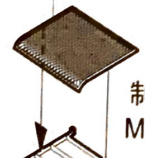


选择
Option



选择
Option

G3



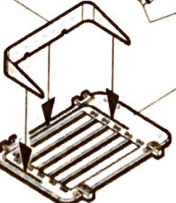
制作2组
Make two

G20

H11

PE-A23

弯曲
Bend



J9

对侧相同
Both sides

G7

PE-A8

弯曲
Bend

对侧相同
Both sides

C4

H40

C4

H40

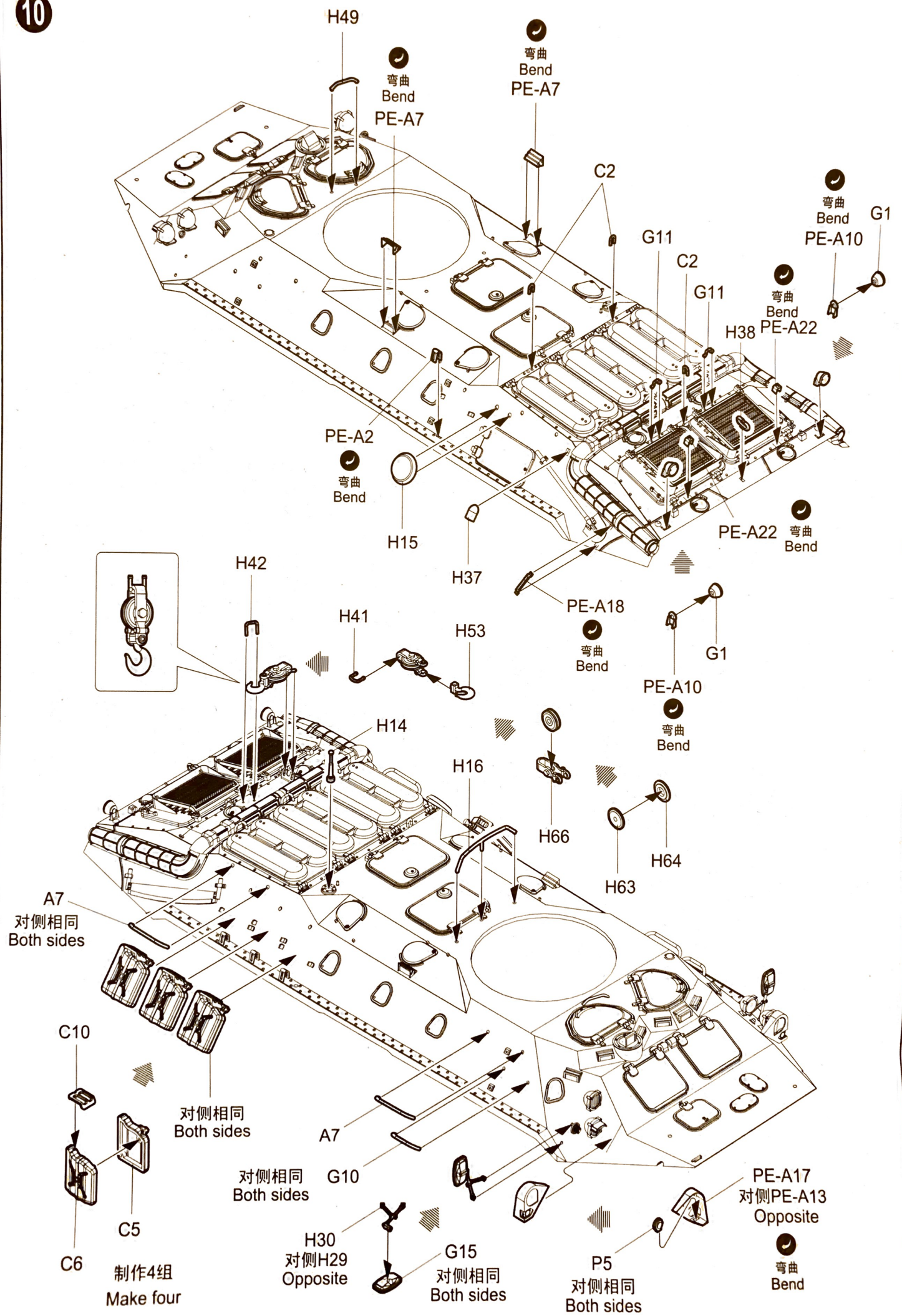
P1

《C-C》

B3

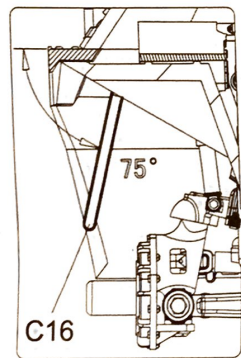
H59
对侧H31
Opposite

对侧相同
Both sides



《车面》
Upper hull

《车底》
Lower hull



C16
对侧相同
Both sides

PE-B4

弯曲
Bend

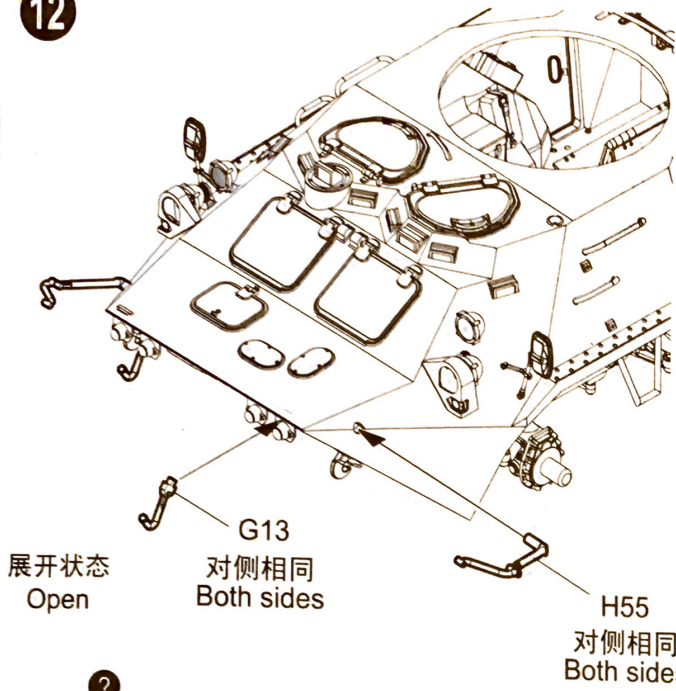
G26

制作2组
Make two

J2

H26

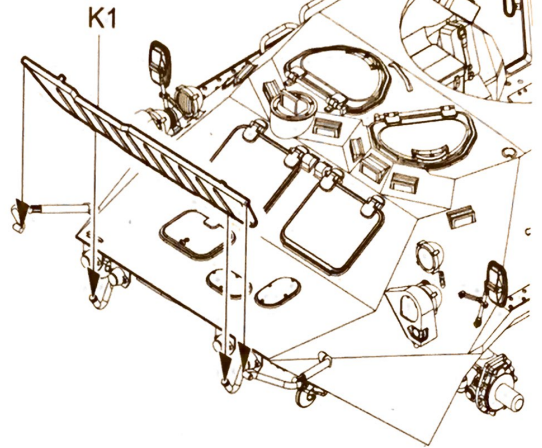
12



展开状态
Open

G13
对侧相同
Both sides

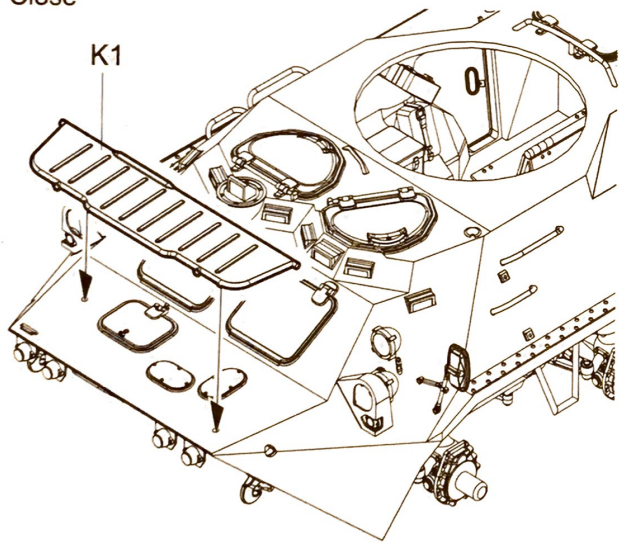
H55
对侧相同
Both sides



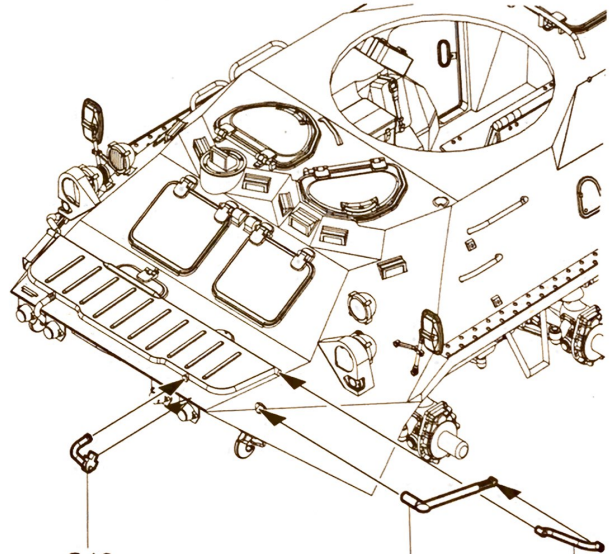
K1

选择
Option

收起状态
Close



K1



G12
对侧相同
Both sides

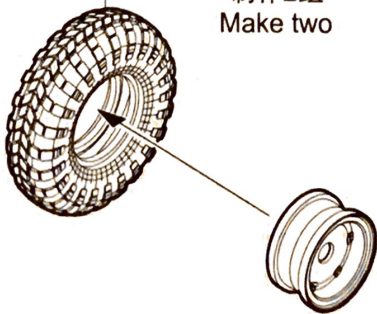
H45
对侧相同
Both sides

G14
对侧相同
Both sides

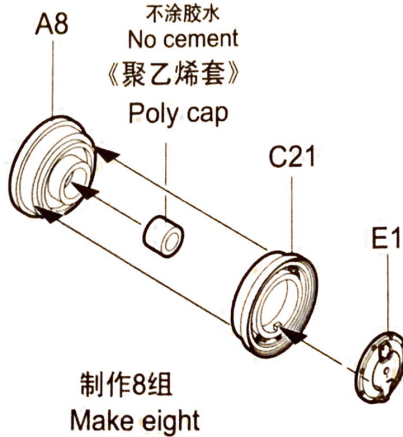
13

《轮胎》
Tyre

《左侧轮胎》
Left tyre
制作2组
Make two



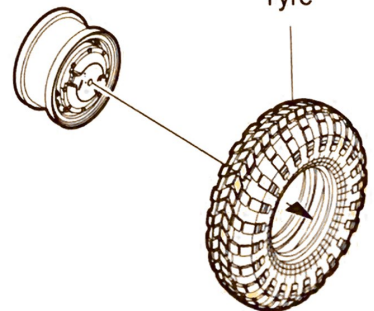
不涂胶水
No cement
《聚乙烯套》
Poly cap



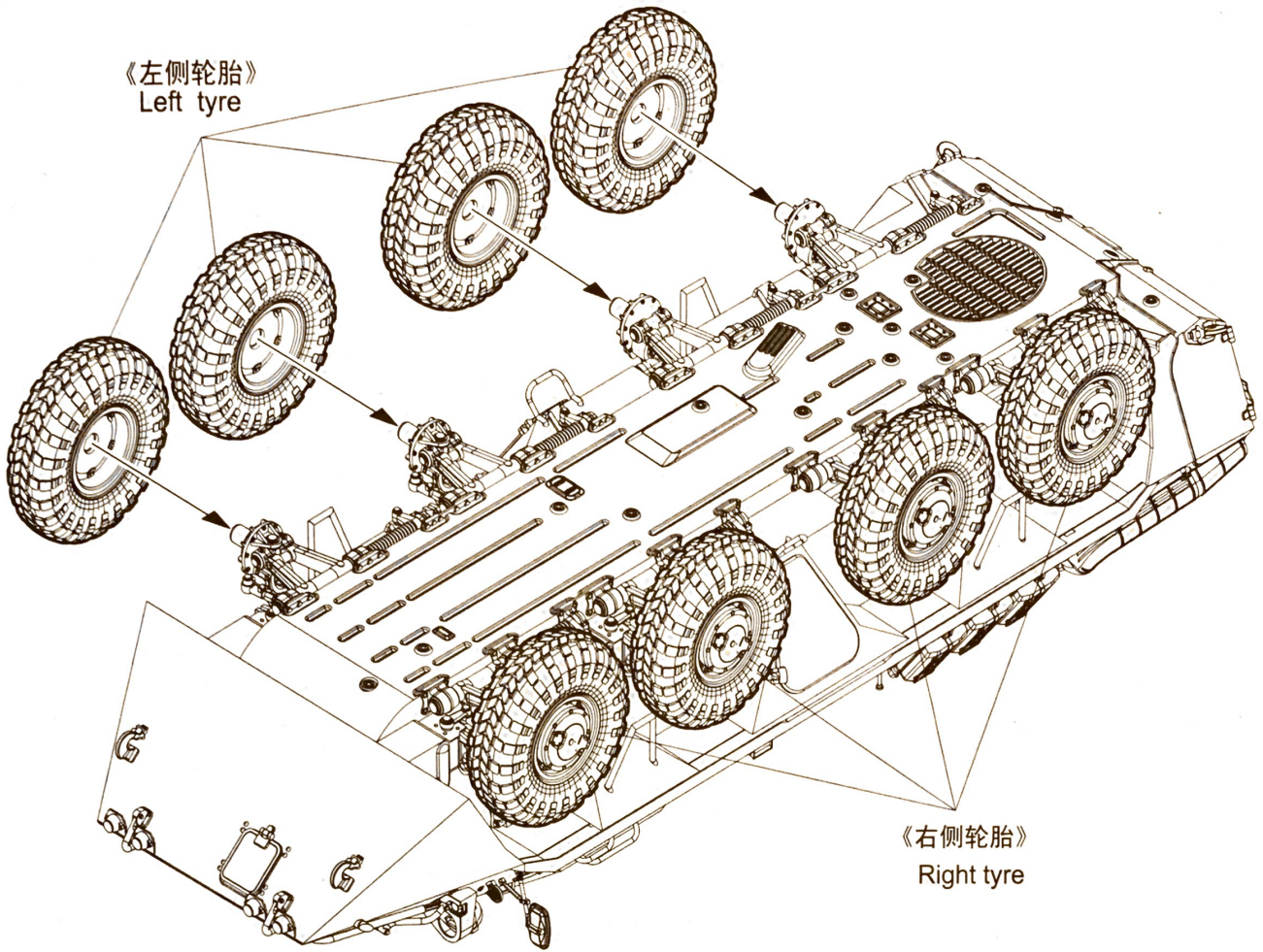
制作8组
Make eight

《右侧轮胎》
Right tyre
制作2组
Make two

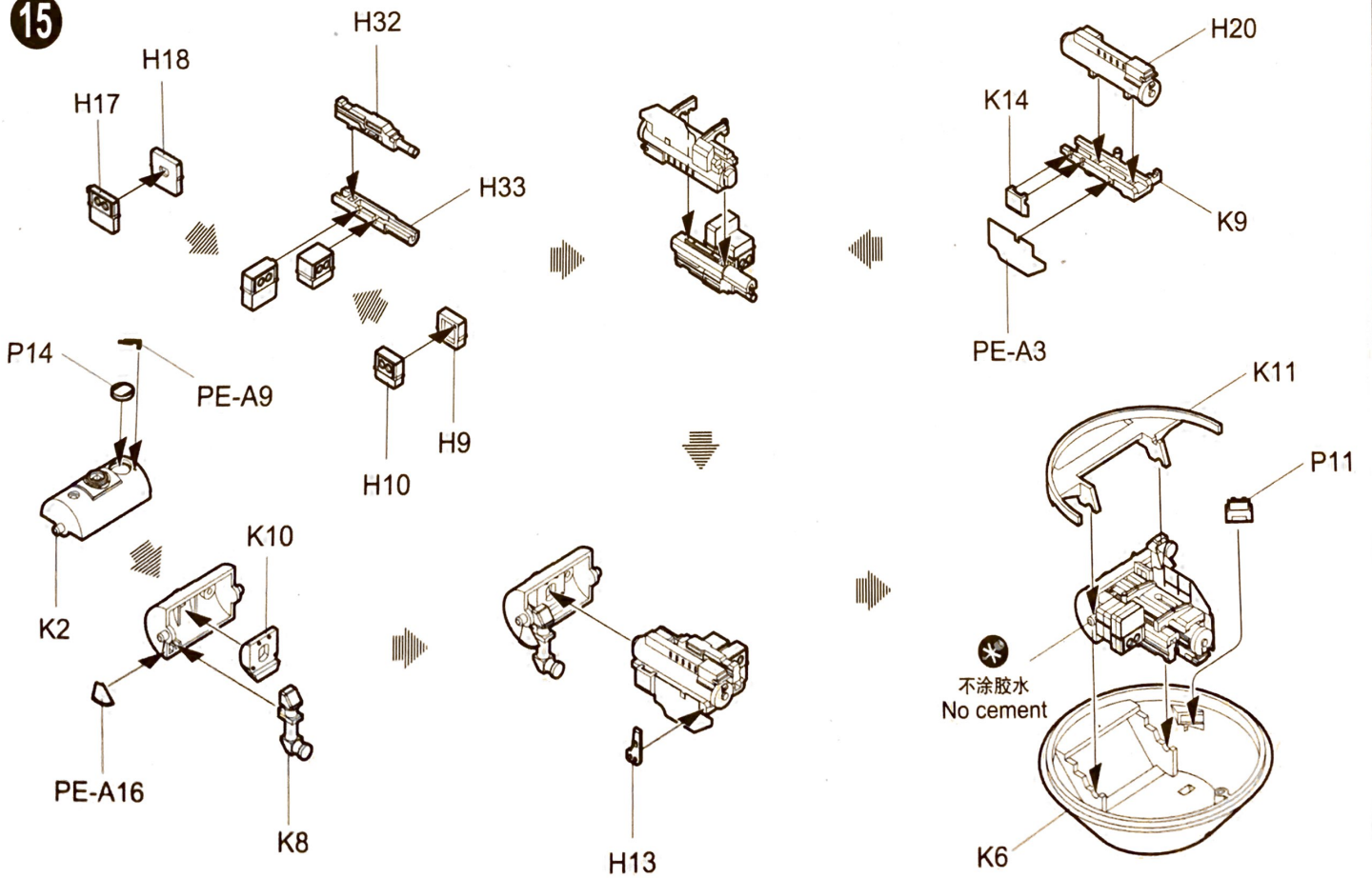
《轮胎》
Tyre

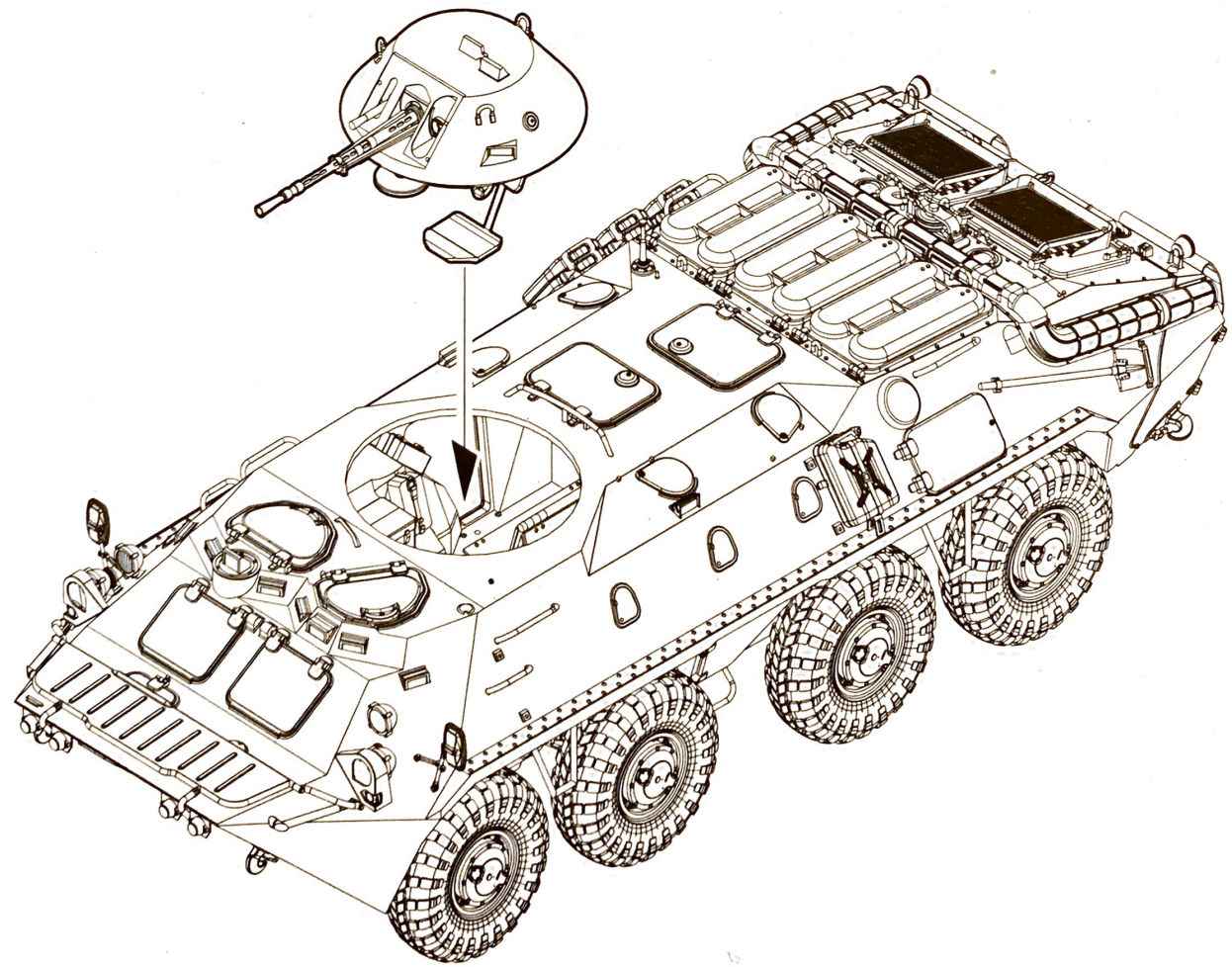
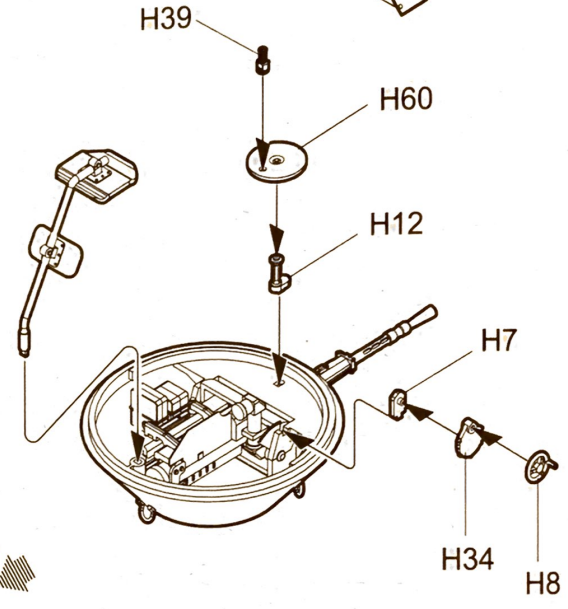
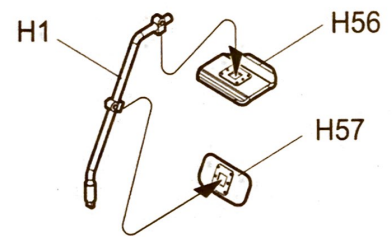
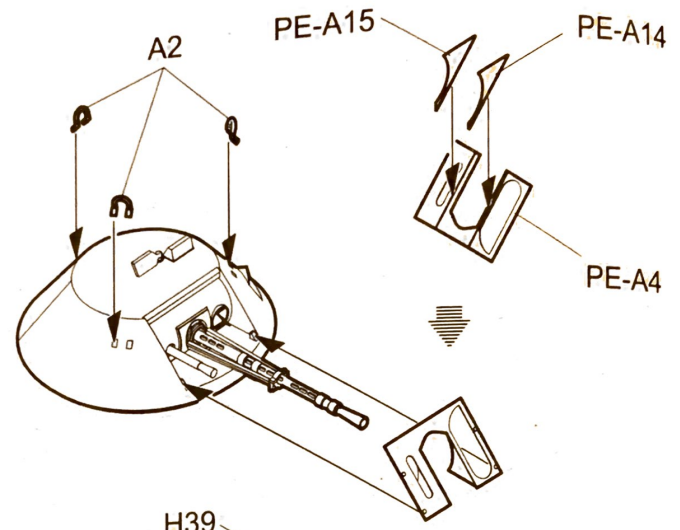
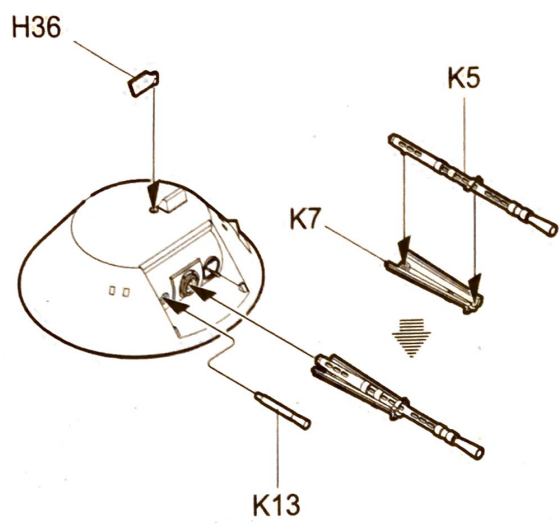


《左侧轮胎》
Left tyre



《右侧轮胎》
Right tyre

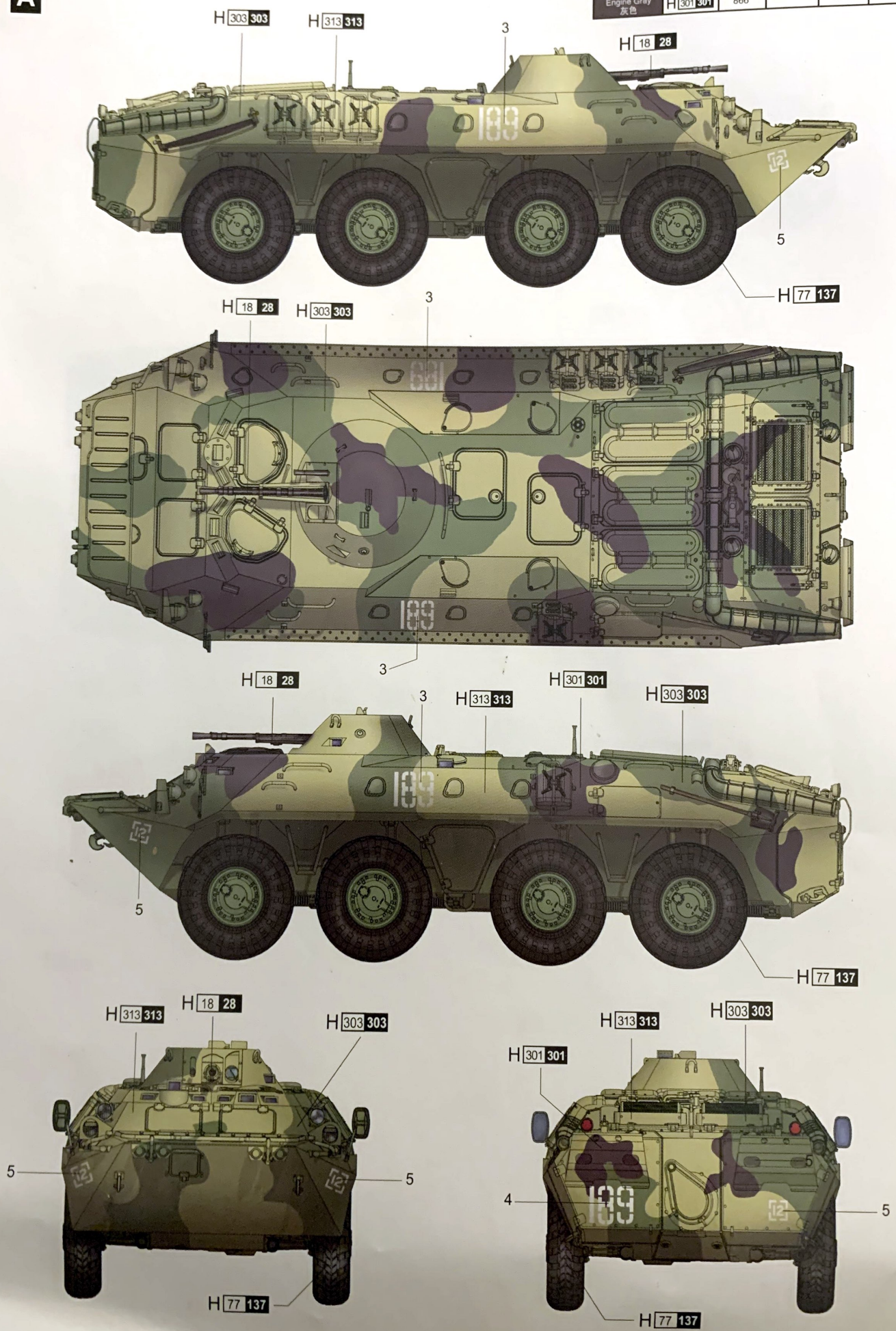




涂装同标贴指示 Painting & Marking guide

Color	Mr.Hobby	Vallejo	Model Master	Tamiya	Humbrol
Metal Black 黑铁色	H 18 28	864	1402	-	-
Yellow 黄色	H 313 313	819	1706	-	121
Tire Black 胎黑色	H 77 137	-	-	-	-
Light Green 绿色	H 303 303	-	1713	XF20	117
Engine Gray 灰色	H 301 301	866	-	XF24	-

A

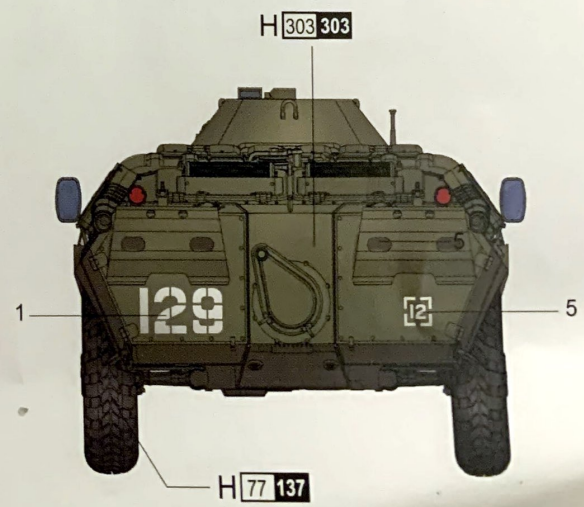
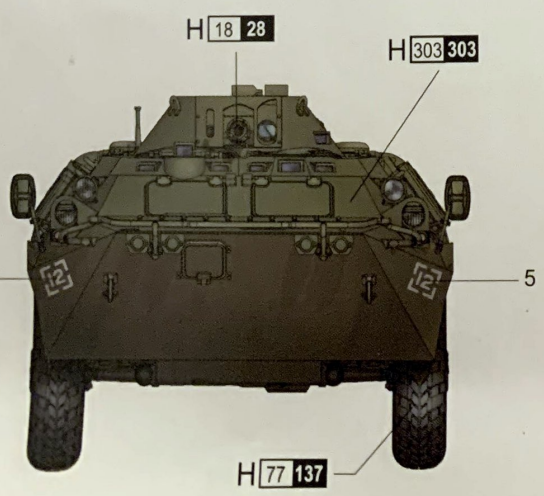
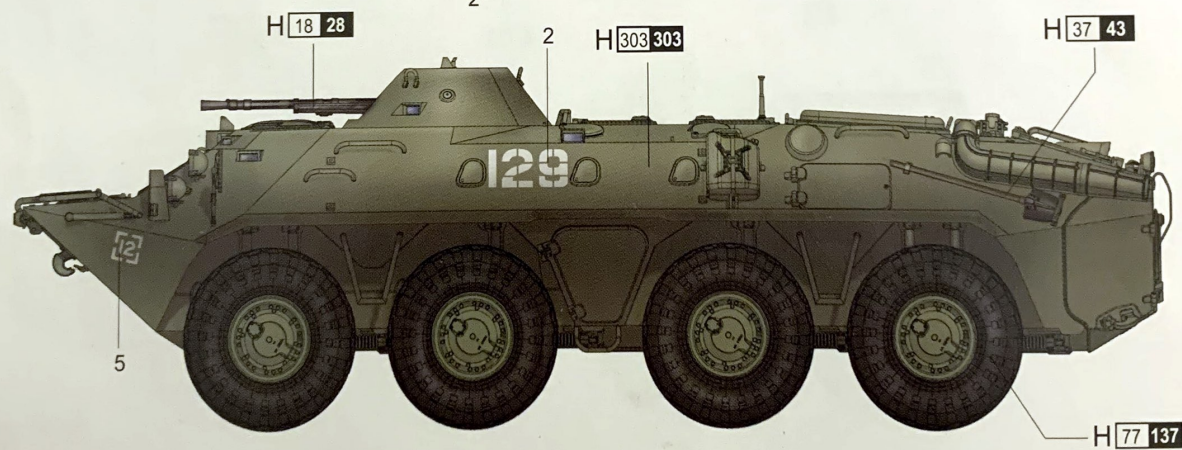
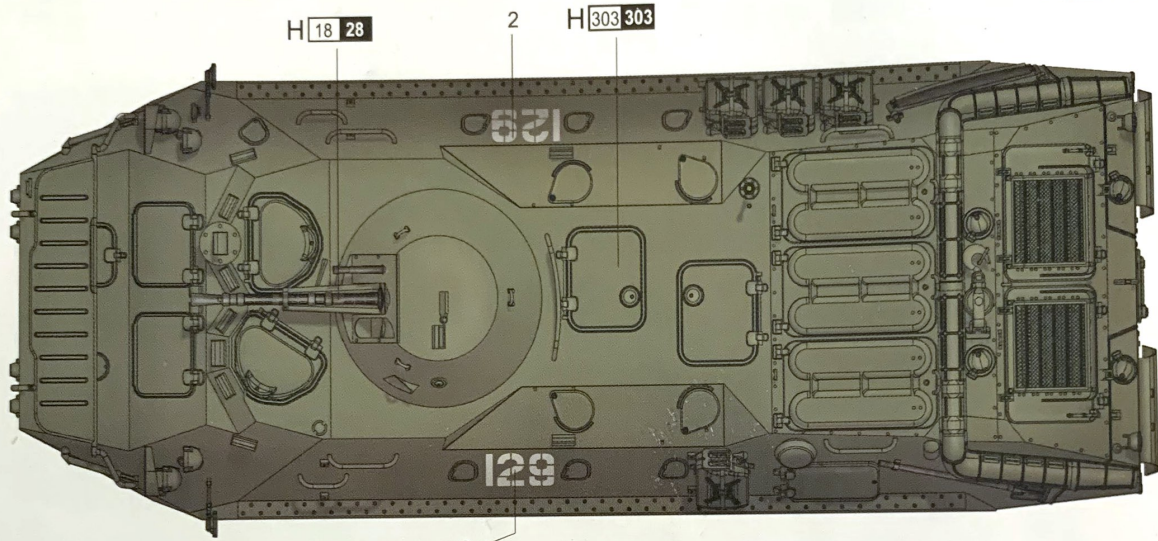
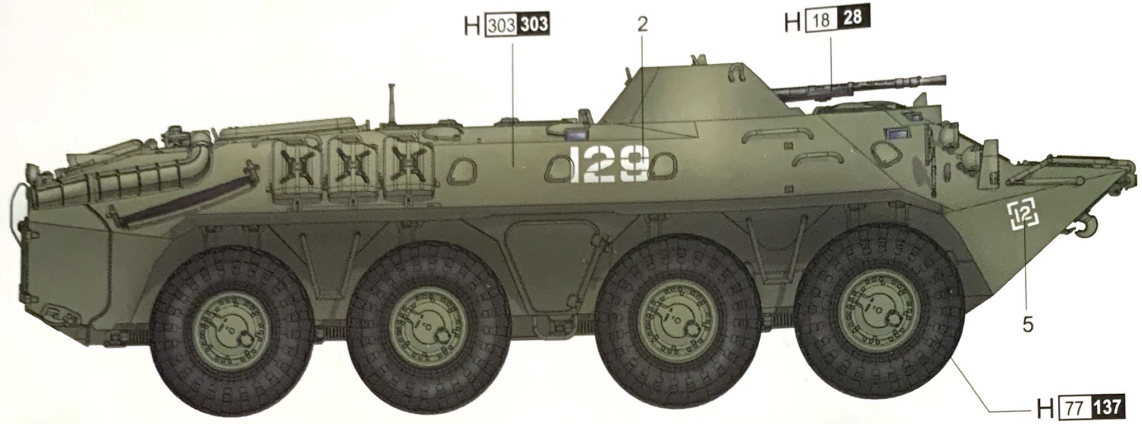


H AQUEOUS HOBBY COLOR ■ Mr. COLOR

涂装同标贴指示 Painting & Marking guide

Color	Mr. Hobby	864	1402	—	186
Metal Black 黑铁色	H 18 28	864	1402	—	186
Wood Brown 木棕色	H 37 43	983	1701	—	—
Tire Black 胎黑色	H 77 137	—	—	—	—
Light Green 绿色	H 303 303	—	1713	XF20	117

B



H AQUEOUS HOBBY COLOR ■ Mr. COLOR