

EagleCals  
EC#91

Fw 190 F-88  
Luftflotte 4, SG2 & SG10

1/32

Scale  
EDITIONS LTD.

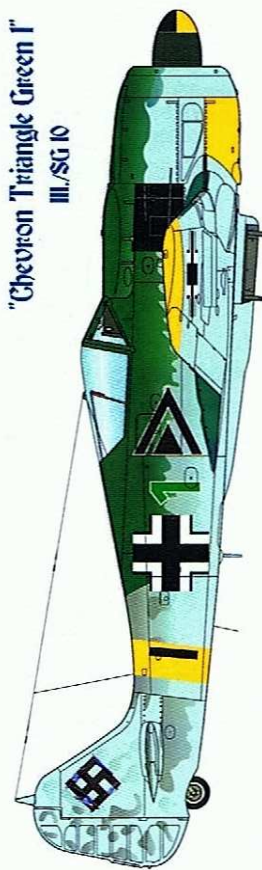
"Black 3"  
5./SG 2



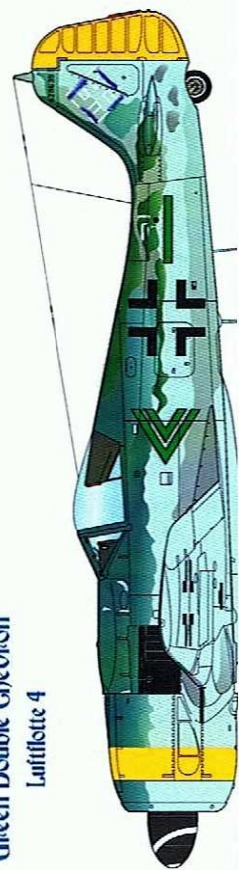
"Chevron Yellow 5"  
Luftflotte 4



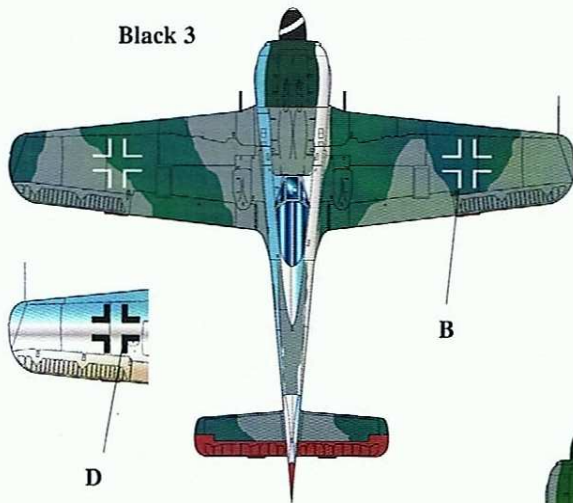
"Chevron Triangle Green 1"  
III./SG 10



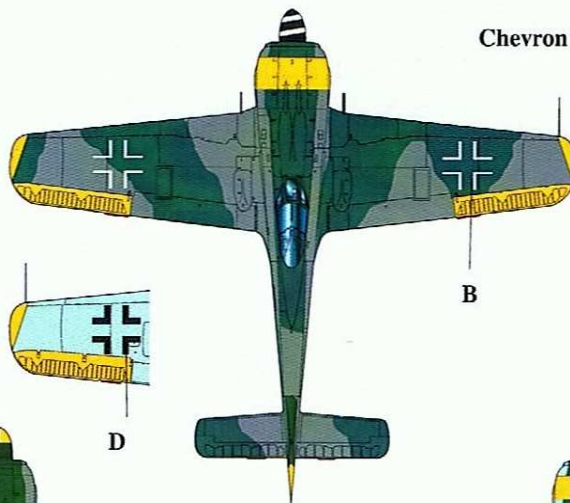
"Green Double Chevron"  
Luftflotte 4



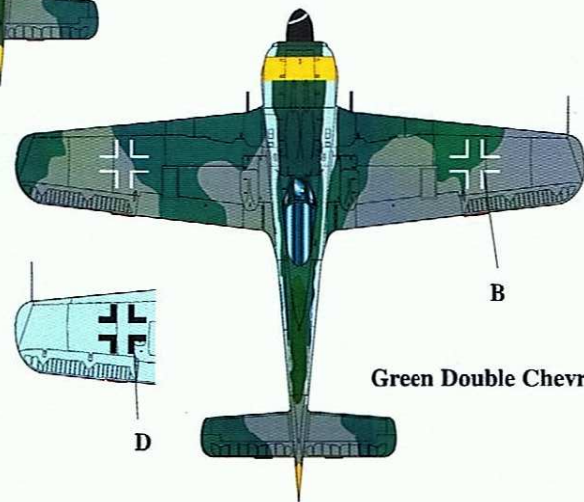
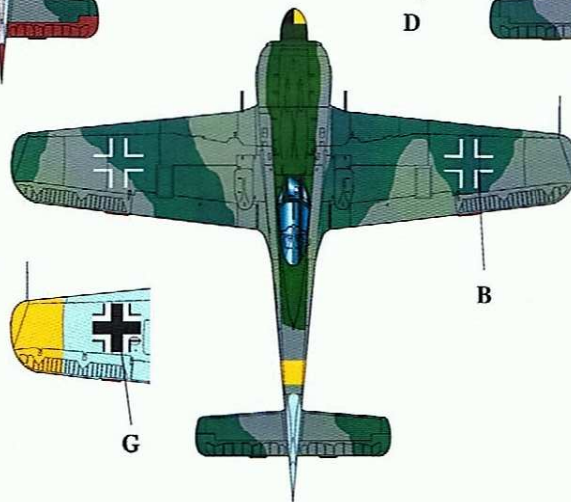
Black 3



Chevron Yellow 5



Chevron Triangle Green 1



Green Double Chevron

# EagleCals #91

# Fw 190 F-8s and F-9 Part One

The Focke-Wulf 190 F-8 was a ground attack version of the Fw 190 A-8. Like the A-8, it could be equipped with a variety of accessories- it could have three different types of propellers, **EagleParts #45,46,47** in 1/32nd scale are recommended depending upon the reference source requirements (These four Fw 190s are all equipped with the standard 9-12067A common metal propeller); it could be fitted with the standard flat canopy or the blown canopy; some F-8s did not have the ETC 50 wing bomb racks, however F-8s did not have the outboard MG 151 20 mm cannon. To improve the 1/32nd Hasegawa kit use: **EagleParts #49-32 Gun Cowl**, **EP#48-32** Main tire and wheels, and **EP#52-32** Tail wheel. Also **EagleParts #51-32** Fw 190 A-8 cockpit is correct for the F-8. These four Fw 190s are all equipped with the standard 9-12067A common metal propeller.

---

**"Black 3" Fw 190 F-8**                      **5/SG 2**                      **8 May 1945**                      **Aufhausen, Germany**  
*Werknummer* unknown. Pilot Eugen Lörcher belly landed this F-8 at Aufhausen to escape the Russians. On board was his fiancée riding in the rear fuselage. Every year on this anniversary he and his wife return to this site celebrating their escape with a toast of champagne. Under wing bomb racks and upper wing cannon fairings not visible. Antennas provisional.  
**Colors:** Fuselage and Undersurfaces: Natural Metal. 75 Gray-Violet light mottling on rear fuselage and fin. Motor and gun-cowl 75 Gray-Violet with 74 Gray-Green. Rudder and elevator left in Red Oxide primer. Upper wing and stabilizer 75 Gray-Violet and 74 Gray-Green.  
**National Markings:** Fuselage; B4 800 mm Black Crosses                      H5 *Hakenkreuz* (Black outline only)  
Wings: Upper - B6 910 mm White crosses, Lower - probably B4 900 mm Black crosses

**Stencilling:** Probably minimal

**References:** Jet & Prop; 3/95 page 16.

---

**"Chevron Yellow 5" Fw 190 F-8**                      **Luftflotte 4**                      **May 1945**                      **Ansbach, Germany**  
*Werknummer* unknown, pilot unknown. Flat canopy with pulley system. No DF loop antenna but base is there. FuG 25a antenna intact. ETC 501 rack is set up for bomb. No under wing ETC 50 racks attached. No upper wing fairings.  
**Colors:** Under surfaces RLM 76, upper surfaces RLM 75/RLM 74 with heavy over painting of RLM 83 Dark Green.  
*Luftflotte 4* Yellow cowl band and rudder; both upper and lower wing tip panels and upper and lower ailerons, Yellow. Spinner Black with White spiral.  
**National Markings:** Fuselage; B4 800 mm Black outline Crosses                      H3 Black *Hakenkreuz*  
Wings: Upper - B6 910 mm White outline crosses, Lower - B4 900 mm Black outline crosses

**Stencilling:** Factory standard, a II. *Gruppe* bar behind the fuselage cross has been partially over painted.

**Reference:** See enclosed published photos.

---

**"Chevron Triangle Green 1" Fw 190 F-8**                      **III/SG 10**                      **April 1945**                      **Location Unknown**  
Pilot and *Werknummer* unknown. Canopy early style with pulley system. DF with loop, FuG 25a antennas intact. ETC 501 rack equipped for carrying a bomb. ETC 50 wing racks installed. Upper wing cannon fairings not visible.  
**Colors:** Under surfaces RLM 76, upper surfaces RLM 75/possibly RLM 83 Dark Green. Narrow Yellow fuselage band. Part of forward portion of spinner, Yellow (possibly 1/3). Under cowling and under wing tips also Yellow.  
**National Markings:** Fuselage; B2 900 mm Black/White with Black outline Crosses                      H2a Black with White outline *Hakenkreuz*  
Wings: Upper - B6 910 mm White outline crosses,  
Lower - B2 900 mm Black/White with Black outline crosses

**Stencilling:** Factory standard

**Reference:** See enclosed published photo

---

**"Green Double Chevron" W. Nr. 428639 Fw 190 F-9 Luftflotte 4**                      **Summer 1945 Neubiberg, Germany**  
Especially interesting feature on this F-9 is the 12 bladed cooling fan. The BMW manual requires the 14 bladed fan for A-9s and F-9s; however it was found to be heavy and inefficient. It is known, some A-9s and F-9s had the 12 bladed cooling fan installed. This aircraft had the 10 mm armored cowl ring. Pilot unknown. Blown canopy, provisional. DF loop and FuG 25a antennas intact. This aircraft has the late style smooth tire. ETC 501 equipped for carrying a bomb; under wing ETC 50 racks installed. Upper wing cannon fairings installed. **EP#50-32** is recommended for the thicker cowl ring.  
**Colors:** Under surfaces RLM 76, upper surfaces RLM 75/RLM 74 with areas of mottling of RLM 83 Dark Green.  
*Luftflotte 4* Yellow cowl ring and rudder, spinner Black with White spiral.

**National Markings:** Fuselage; B4 800 mm Black outline Crosses                      H4 White outline *Hakenkreuz*

Wings: Upper - B6 910 mm White outline crosses, Lower - B4 900 mm Black outline crosses

**Stencilling:** Factory standard

**Reference:** See enclosed published photos

---

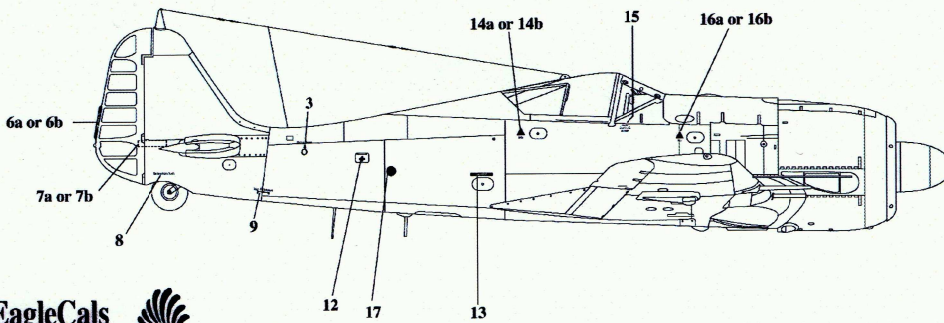
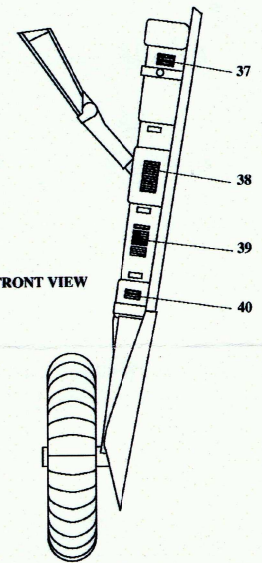
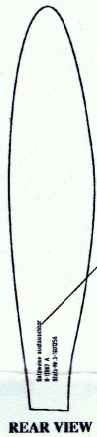
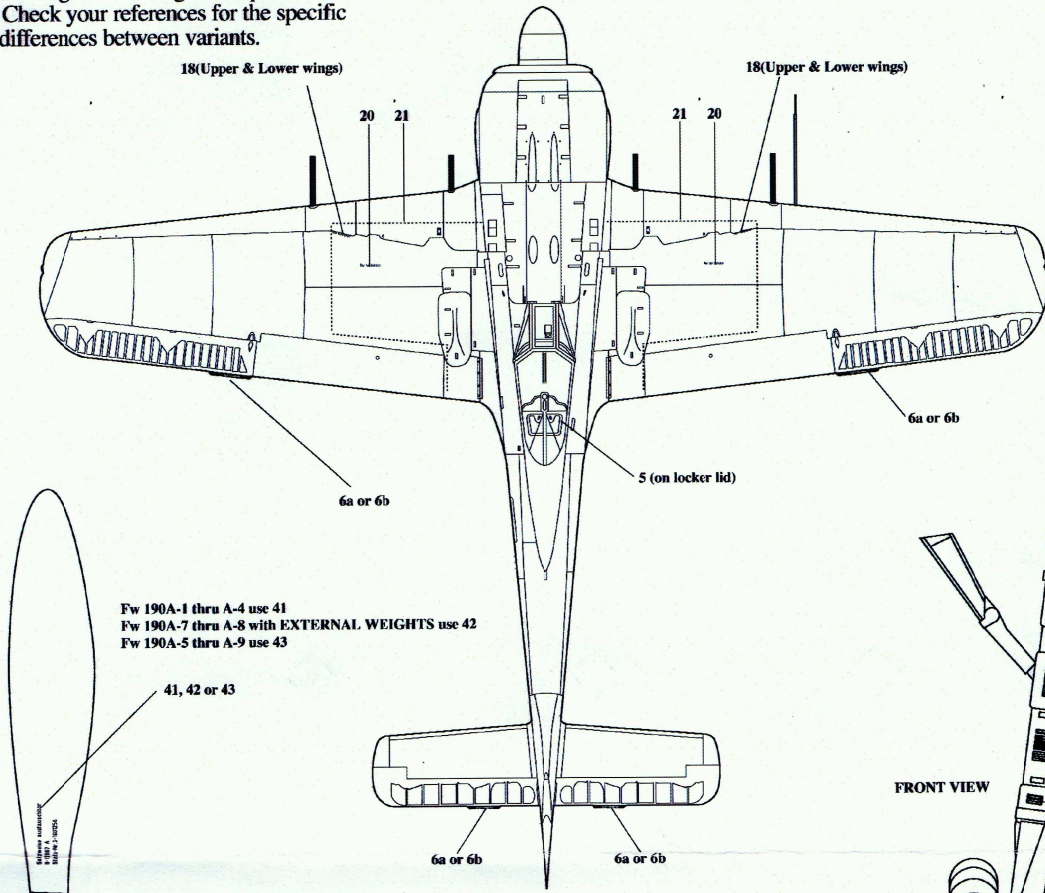
© 2005 Eagle Editions Ltd. All images/photos copyrighted by Eagle Editions Ltd.

No copies may be reproduced without written consent from publisher Eagle Editions Ltd.

The color schemes depicted are the artist's interpretations of the available photographic references only.

The final decision resides with the modeler.

NOTE: Stencil diagram drawings are representational only. Check your references for the specific details and differences between variants.



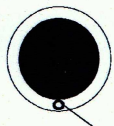
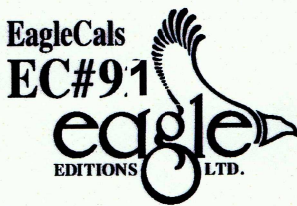
Propeller drawings are provisional-not to scale  
Standard



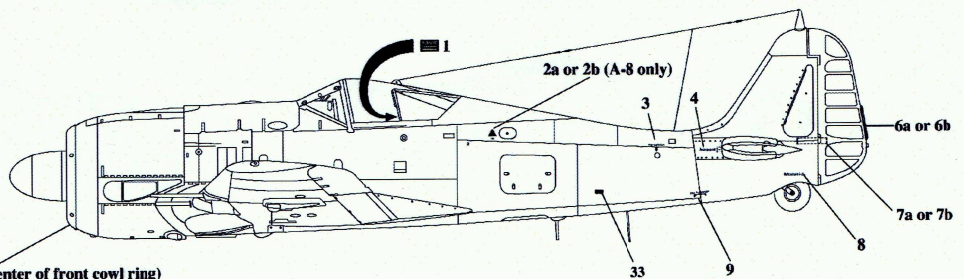
VDM 9 with External Weights



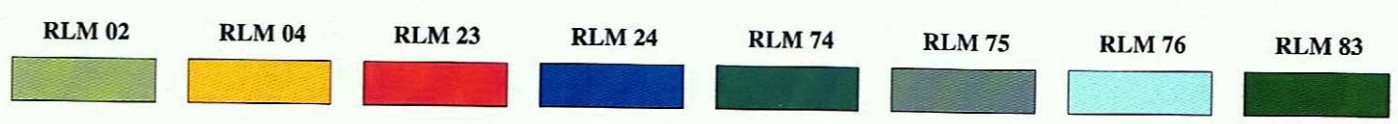
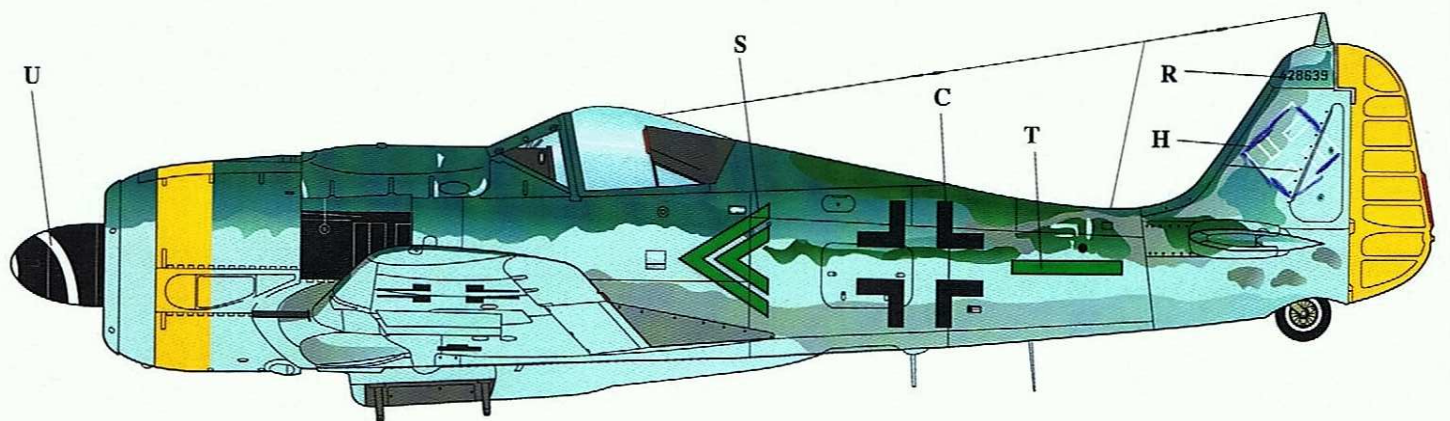
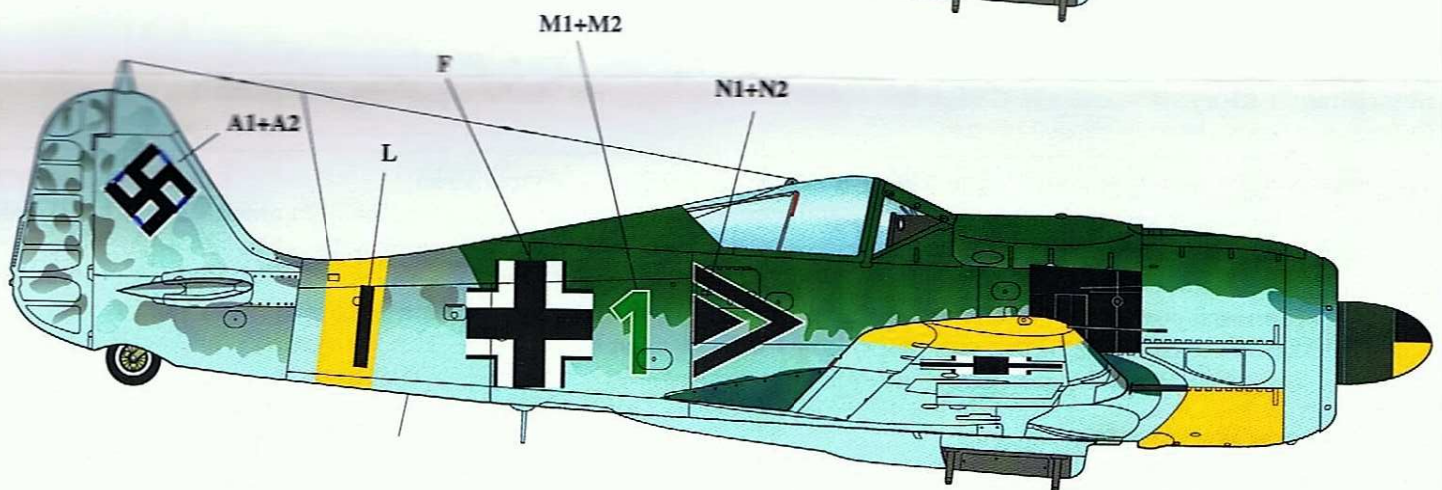
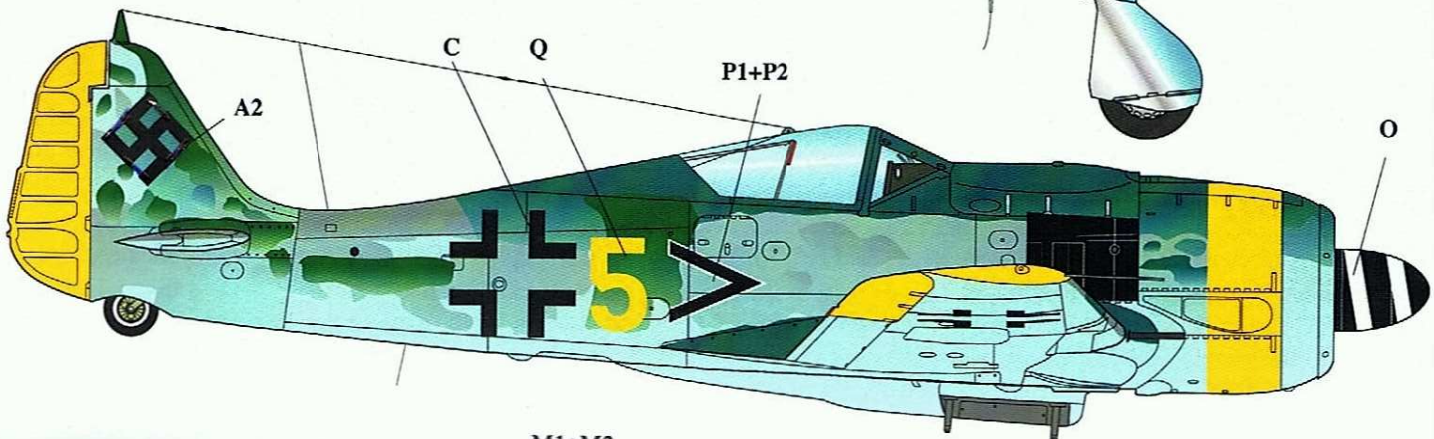
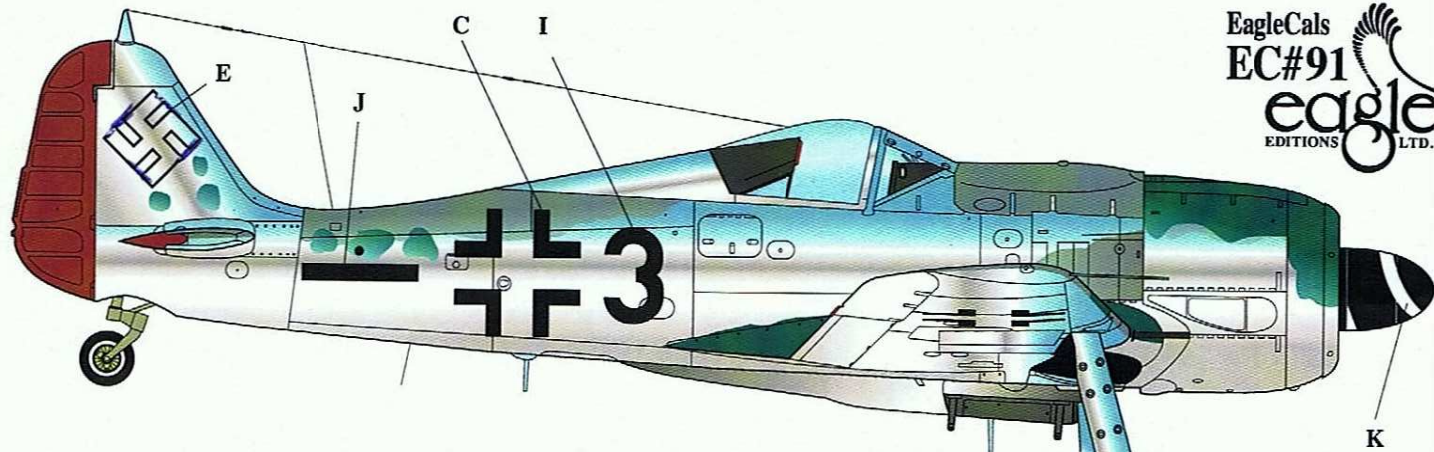
Wooden VDM 9



44 (bottom center of front cowl ring)

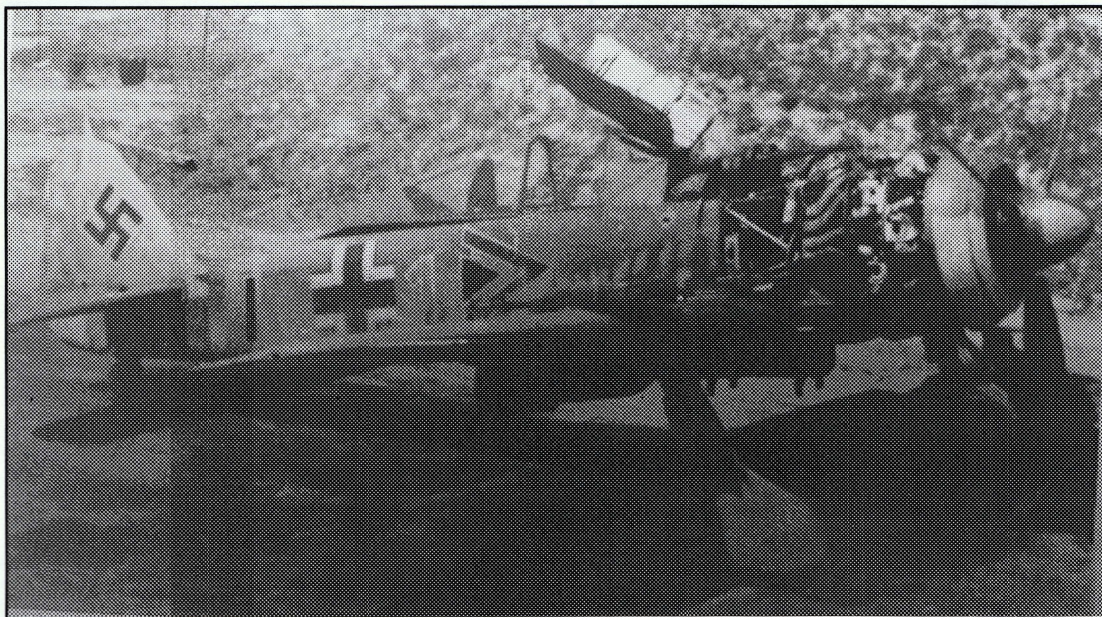
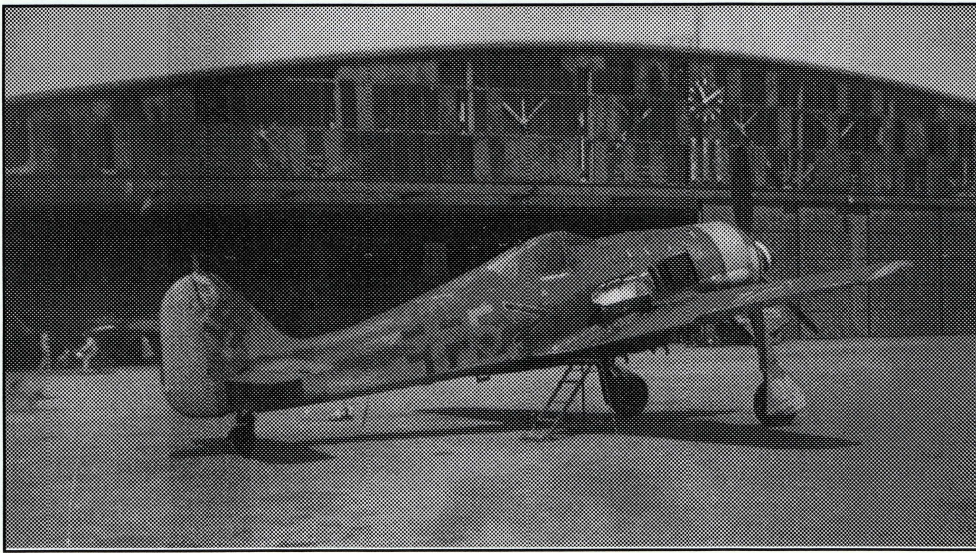


Stencils no. 22 thru 32 not used on Fw 190A aircraft.



**“Chevron Yellow 5”****Fw 190 F-8**

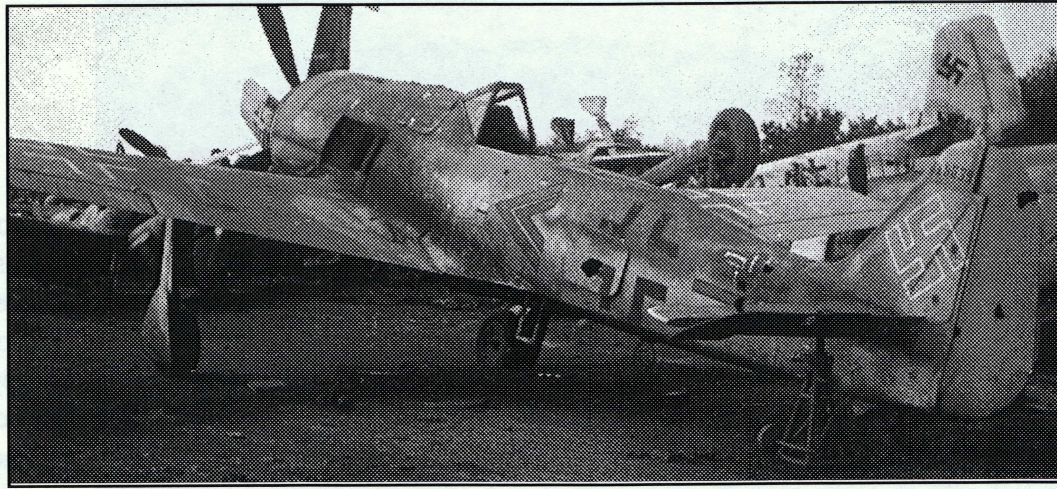
Note flat canopy with the pulley system. No DF loop but base present. ETC rack set up for bomb. No underwing ETC 50 racks. No upperwing cannon fairings. Note the very unusual Yellow wing tips and Yellow ailerons, upper and lower.

**“Chevron Triangle  
Green 1”**

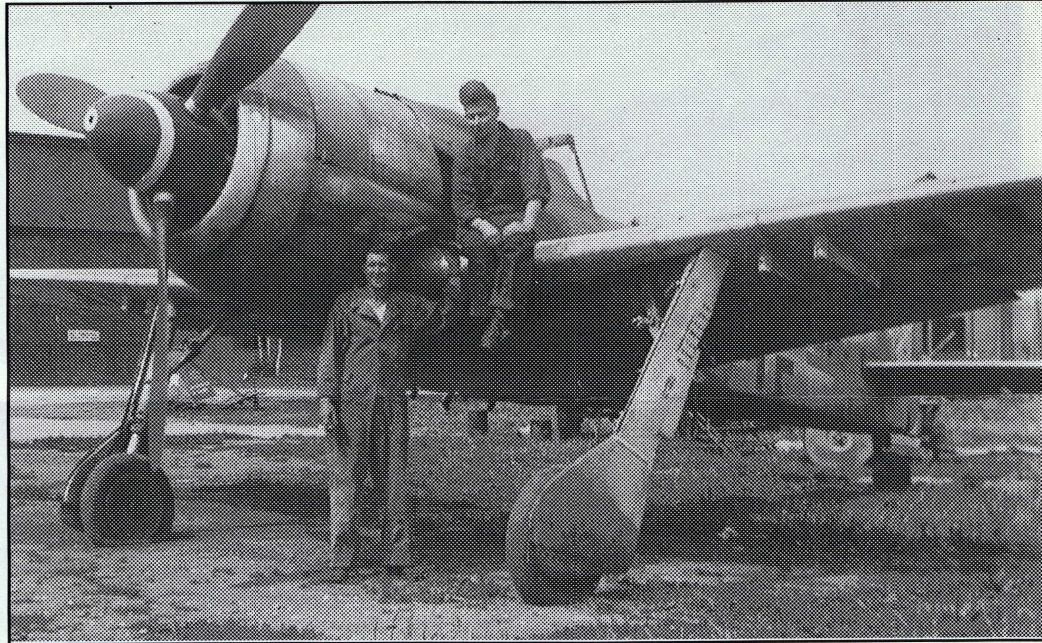
A colorful III./SG 10 Fw 190 F-8. Note the flat canopy with the pulley system, ETC 50 rack installed, ETC 501 rack set up for carrying a bomb and the interesting sectioned spinner.

## "Green Double Chevron"

An interesting Fw 190 F-9 W. Nr. 428639 had been on strength with *Luftflotte 4*. The upperwing cannon fairings are installed.



An especially interesting feature on this F-9 is the 12 bladed cooling fan. The BMW manual requires the 14 bladed fan for A-9s and F-9s; however, it was found to be heavy and inefficient. It is known some A-9s and F-9s had the 12 bladed cooling fan installed. Also note the wide 10 mm armored cowl ring.



A close up of the cockpit area. The fuel octane triangle reads C-3 100. Underneath the stencil is 115. Although now missing, it probably had a blown canopy.