



**FALCON**

# Messerschmitt Bf 109G-12

Two-seat trainer

## History

The Messerschmitt Bf 109G-12 was built as a result of the need to accelerate the pace of Luftwaffe fighter pilot training in 1944. Around 100 Bf 109G aircraft (G-1, G-2, G-3, G-4, G-6 types) were converted to Bf 109G-12 configuration and were used by most of the Luftwaffe fighter training units. This model represents the type based on the Bf 109G-4 version, and includes both flat-top and curved-style canopies.

## Specifications

Wing span:	9924 mm (32' 6½").	Length:	9020 mm (29' 7¼").
Engine:	Daimler Benz DB605A, 1475 hp.	Armament:	none.
	Maximum speed:	390 mph at 21,000 feet.	

## ASSEMBLY INSTRUCTIONS

*Please read this before you begin*

Wash all plastic parts in soapy water to remove mould release agent. Saw parts from their sprues rather than breaking or cutting them off. Use cyanoacrylate (superglue) to join metal parts to plastic.

In order to make the job of sanding down the sprue and flow channels easier, we suggest the following tool as a useful item for removing excess plastic. Cut some lengths of either 3–5 mm plastic card, wood or acrylic sheet, 150 mm long by 30 mm wide. Next fasten (with double-sided adhesive tape) strips of sandpaper to the cut lengths. Use 80 grit for heavy sanding, 180 grit for moderate sanding and 320 grit for finishing.

## Fuselage and wings

Commence assembly with the interior parts. Add seat harnesses from lead foil, thin tape or aftermarket brass etched parts. Exhaust shrouds need to be made from 0.25 mm plastic card or metal and fitted in place. Templates are provided for these as follows:



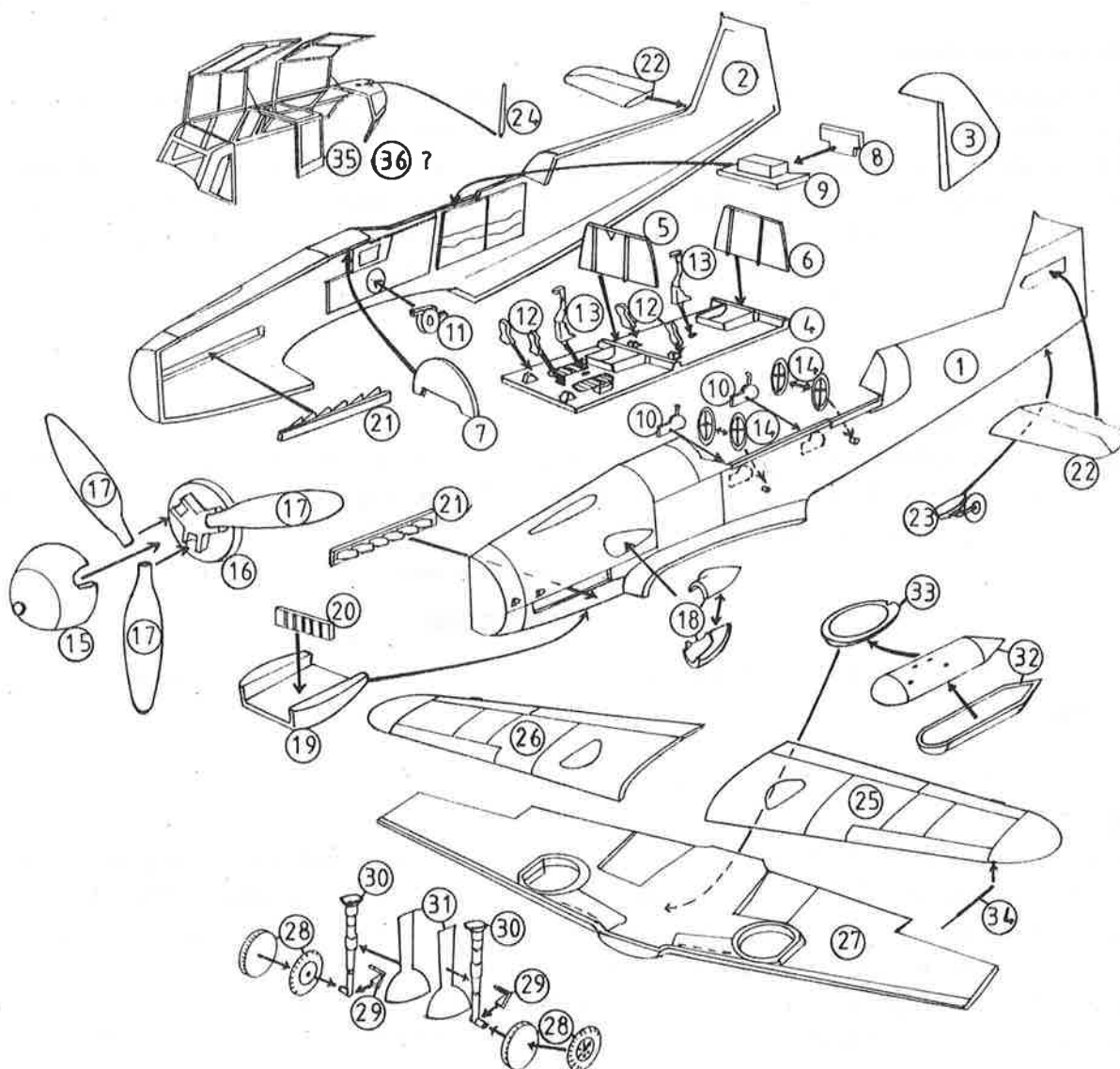
Fabricate drop-tank supports from thin wire or heat-stretched sprue and fit in place using marks on Part 33 as guide.

## Canopy

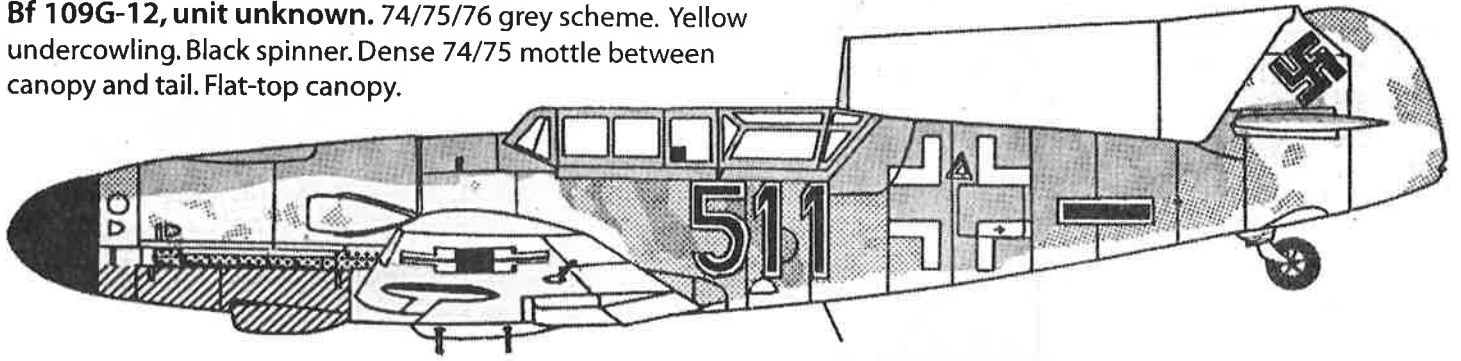
To separate the canopy from the base, carefully score around the edges with a very sharp modelling knife or scalpel. Any rough edges can be cleaned up with fine wet-and-dry sandpaper. The canopy is best attached to the model with PVA or white glue. Cyanoacrylate glue can also be used, but must be used sparingly as large amounts tend to cause frosting on clear areas. The best way to achieve crisp frame lines is by attaching pre-painted strips of decal film where required. It will be necessary to undercoat the frame lines marked on the canopy, as decals need a painted surface for best adhesion.

### Bf 109G-12 Parts List

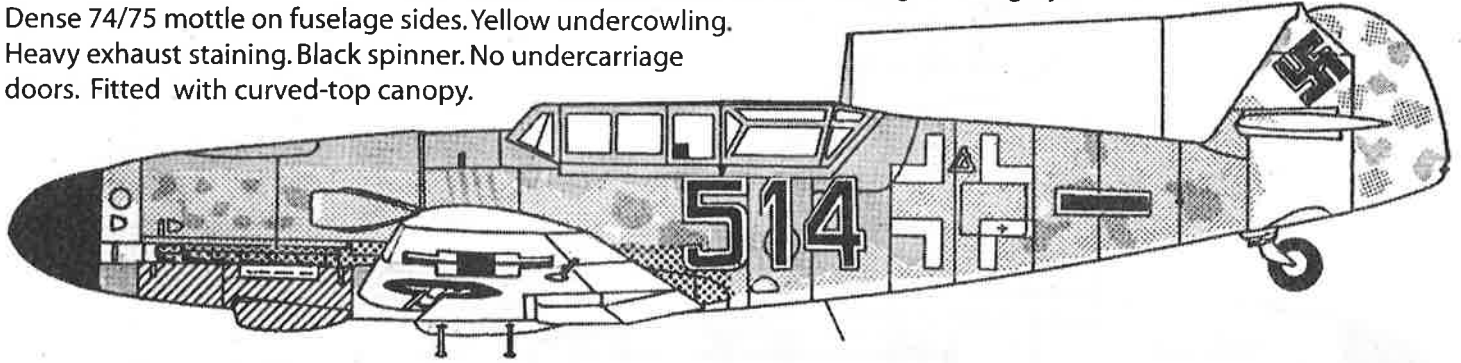
- |     |                             |     |                         |
|-----|-----------------------------|-----|-------------------------|
| 1.  | left fuselage half          | 19. | oil cooler intake       |
| 2.  | right fuselage half         | 20. | oil cooler intake grill |
| 3.  | rudder                      | 21. | exhaust pipes (metal)   |
| 4.  | cockpit floor               | 22. | tailplanes              |
| 5.  | middle bulkhead             | 23. | tailwheel               |
| 6.  | rear bulkhead               | 24. | aerial mast             |
| 7.  | front instrument panel      | 25. | left upper wing         |
| 8.  | rear instrument panel       | 26. | right upper wing        |
| 9.  | rear instrument panel cover | 27. | lower wing              |
| 10. | throttle quadrants          | 28. | mainwheel halves        |
| 11. | oxygen regulator            | 29. | torque links (metal)    |
| 12. | rudder pedals               | 30. | undercarriage legs      |
| 13. | control levers              | 31. | undercarriage doors     |
| 14. | trim wheels (metal)         | 32. | drop tank halves        |
| 15. | spinner                     | 33. | drop tank rack          |
| 16. | spinner backplate           | 34. | pitot tube (metal)      |
| 17. | propeller blades            | 35. | canopy (flat-top)       |
| 18. | supercharger intake halves  | 36. | canopy (curved-top)     |



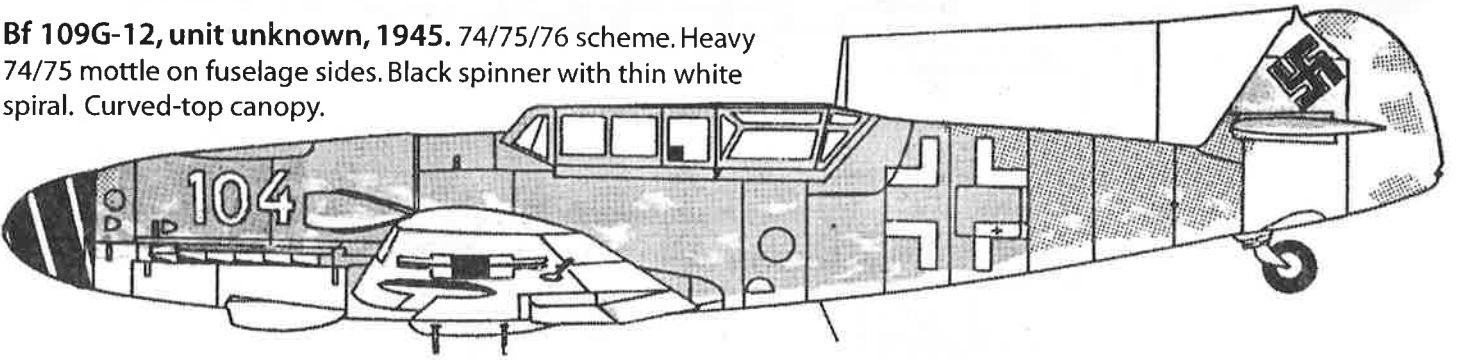
**Bf 109G-12, unit unknown.** 74/75/76 grey scheme. Yellow undercowling. Black spinner. Dense 74/75 mottle between canopy and tail. Flat-top canopy.



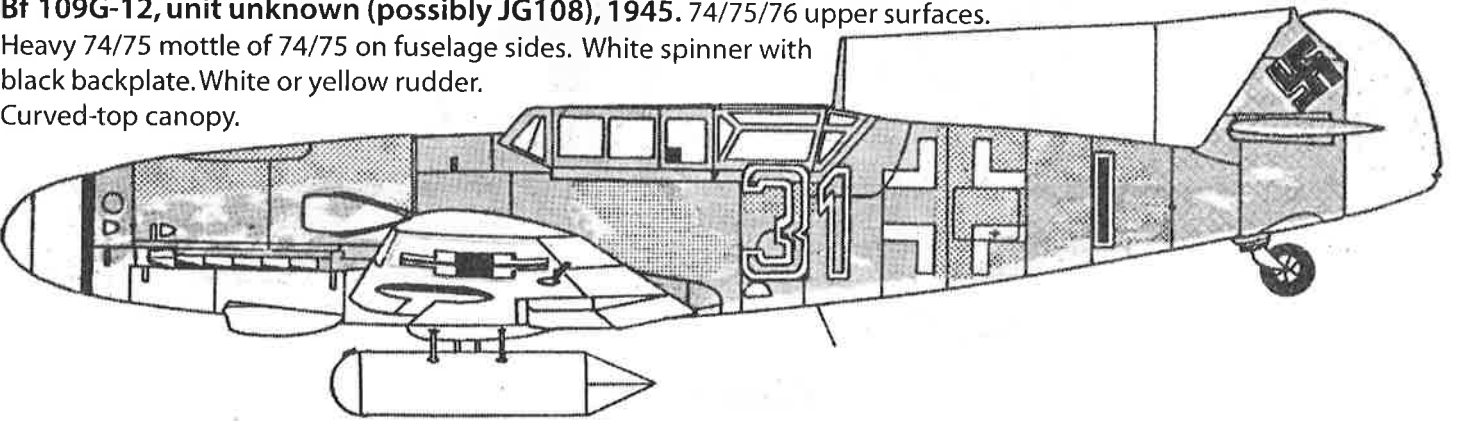
**Bf 109G-12, unit unknown.** Weathered 74/75 grey upper surfaces. 76 light blue-grey undersurfaces. Dense 74/75 mottle on fuselage sides. Yellow undercowling. Heavy exhaust staining. Black spinner. No undercarriage doors. Fitted with curved-top canopy.



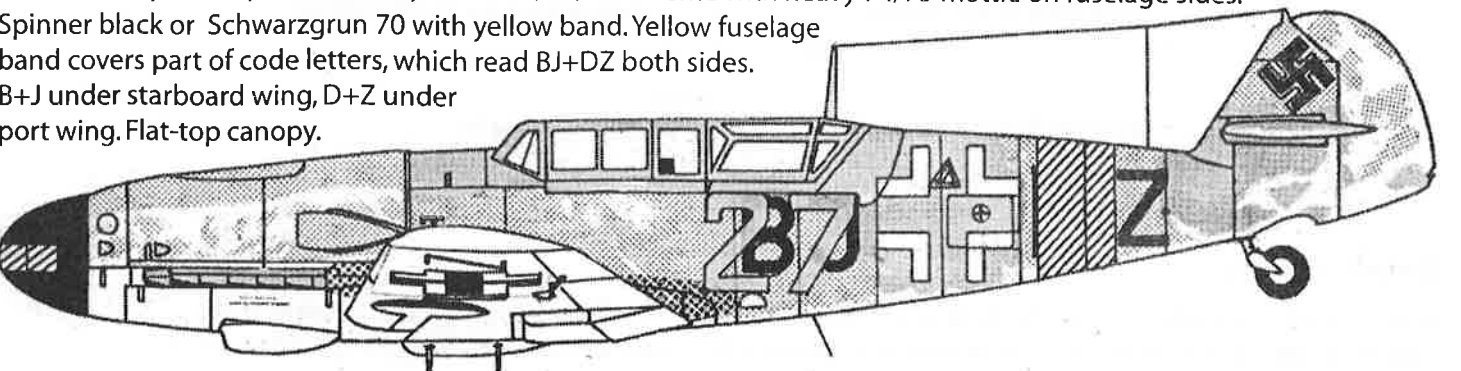
**Bf 109G-12, unit unknown, 1945.** 74/75/76 scheme. Heavy 74/75 mottle on fuselage sides. Black spinner with thin white spiral. Curved-top canopy.



**Bf 109G-12, unit unknown (possibly JG108), 1945.** 74/75/76 upper surfaces. Heavy 74/75 mottle of 74/75 on fuselage sides. White spinner with black backplate. White or yellow rudder. Curved-top canopy.

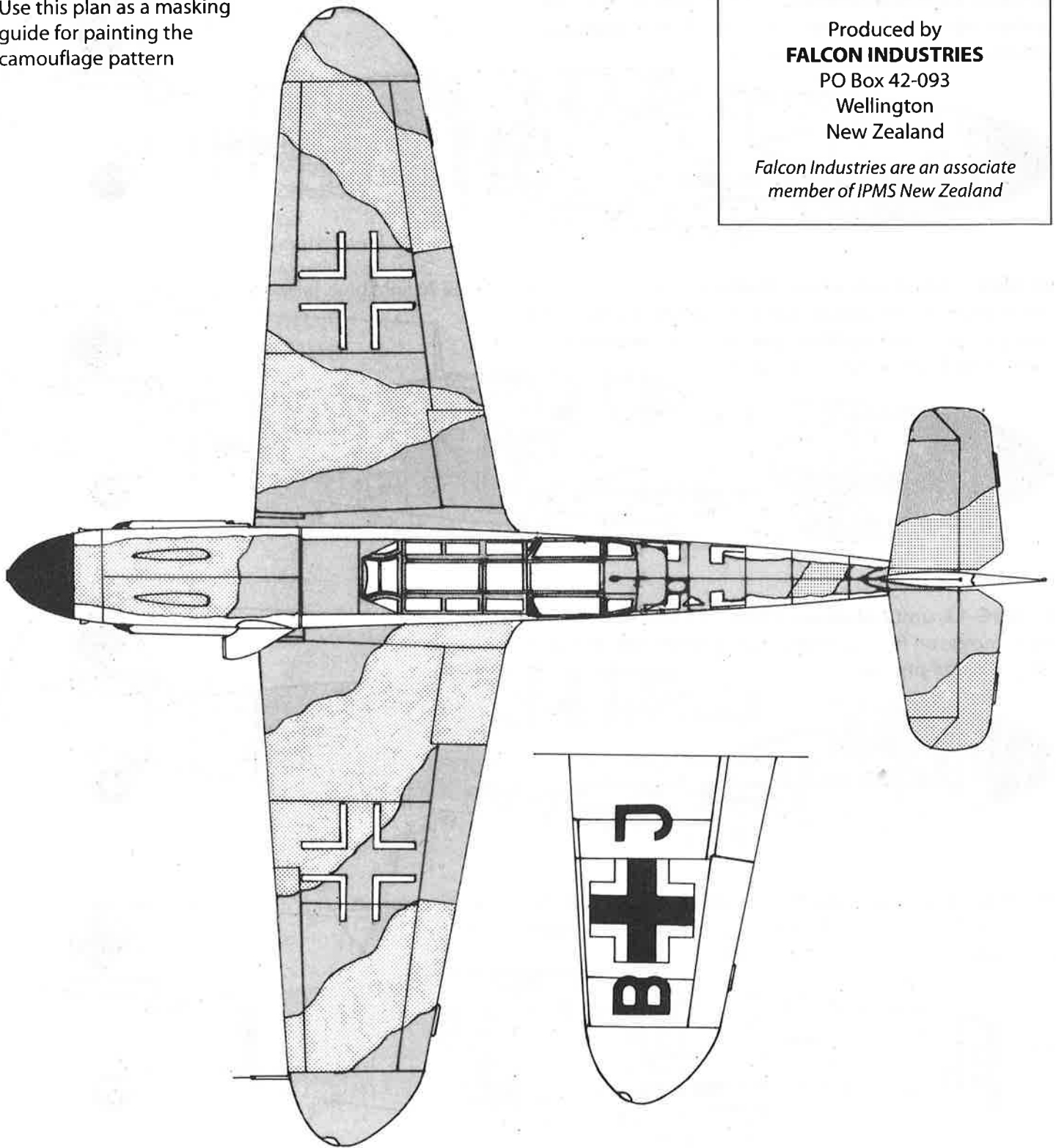


**Bf 109G-12, JG101, Pau France, 1944.** 74/75/76 scheme with heavy 74/75 mottle on fuselage sides. Spinner black or Schwarzgrun 70 with yellow band. Yellow fuselage band covers part of code letters, which read BJ+DZ both sides. B+J under starboard wing, D+Z under port wing. Flat-top canopy.



Use this plan as a masking guide for painting the camouflage pattern

Produced by  
**FALCON INDUSTRIES**  
PO Box 42-093  
Wellington  
New Zealand  
*Falcon Industries are an associate member of IPMS New Zealand*



### Colours



Dark Grey 74 (Graugrün)



Light Blue Grey 76 (Weissblau)



Medium Grey 75 (Grauviolett)



Yellow 04 (Gelb)

### Detail colours

*Interior: Dark Grey 66. Instruments: black with white dials. Rudder pedals: silver. Exhaust pipes: rust brown. Propeller blades: Black Green 70. Undercarriage legs and wheel wells: RLM Grey 02 or Light Blue 76. Wheel hubs: black.*



BJ DZ  
BJ DZ  
BJ DZ

514 =  
514 =  
511 511

27 LZ

**FALCON kit FA604**  
© 1997