

KC-97G



The KC-97 evolved from the very successful Boeing B-377 airliner and U.S. Air Force C-97 transport. The KC-97 was adapted to carry fuel for airborne refueling of United States Air Force aircraft starting in the late 1940's. The KC-97 served well into the 1960's with Air National Guard units.

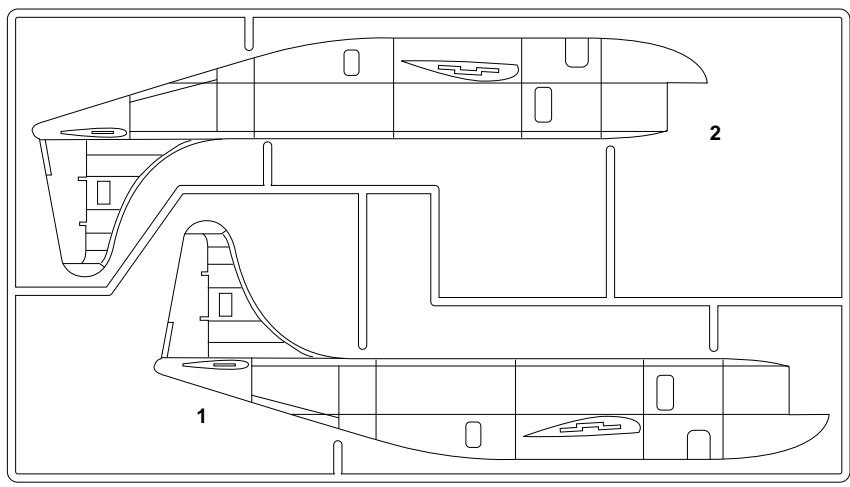
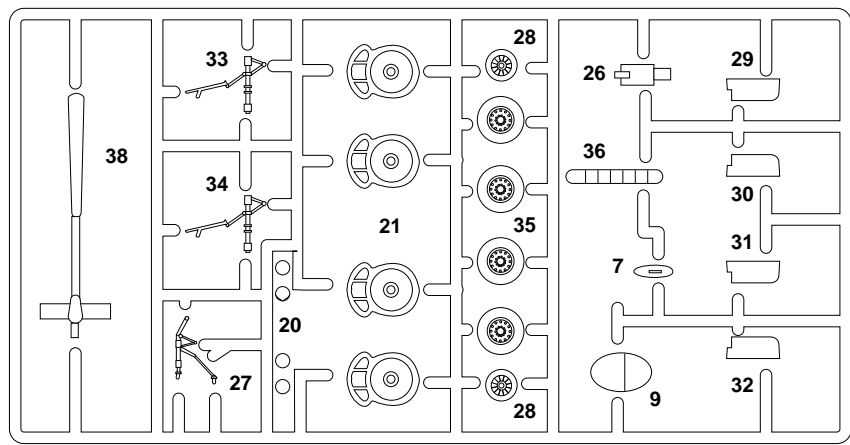
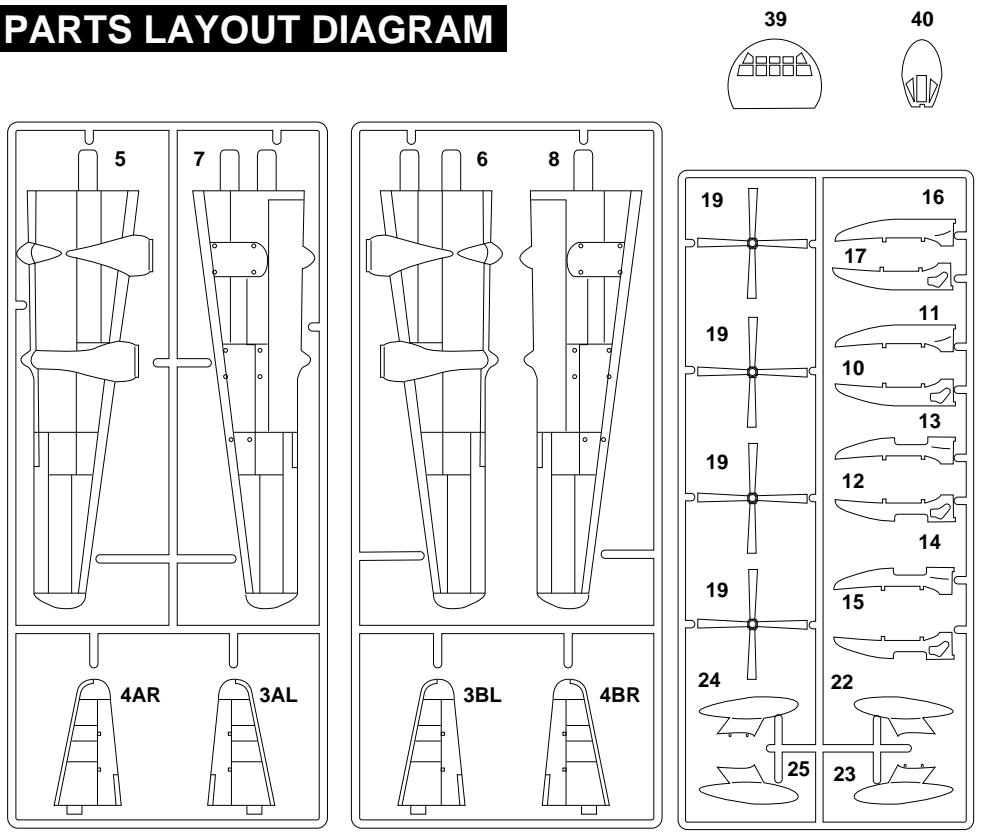
Marking include in this kit are:

USAF KC-97G 52-2728, Missouri ANG, mid 1960's

USAF KC-97G 53-0272, California ANG, Germany, 1969

Minicraft Models, 1501 Commerce Drive, Elgin IL 60123 USA
www.minicraftmodels.com

PARTS LAYOUT DIAGRAM





Cement
Collier
Kleben
Pegar
Incollare
Colar
Kleven



DO NOT Cement
Ne pas Collier
Nicht Kleben
No Pegar
Non Incollare
Nao Colar
Niet Kleven

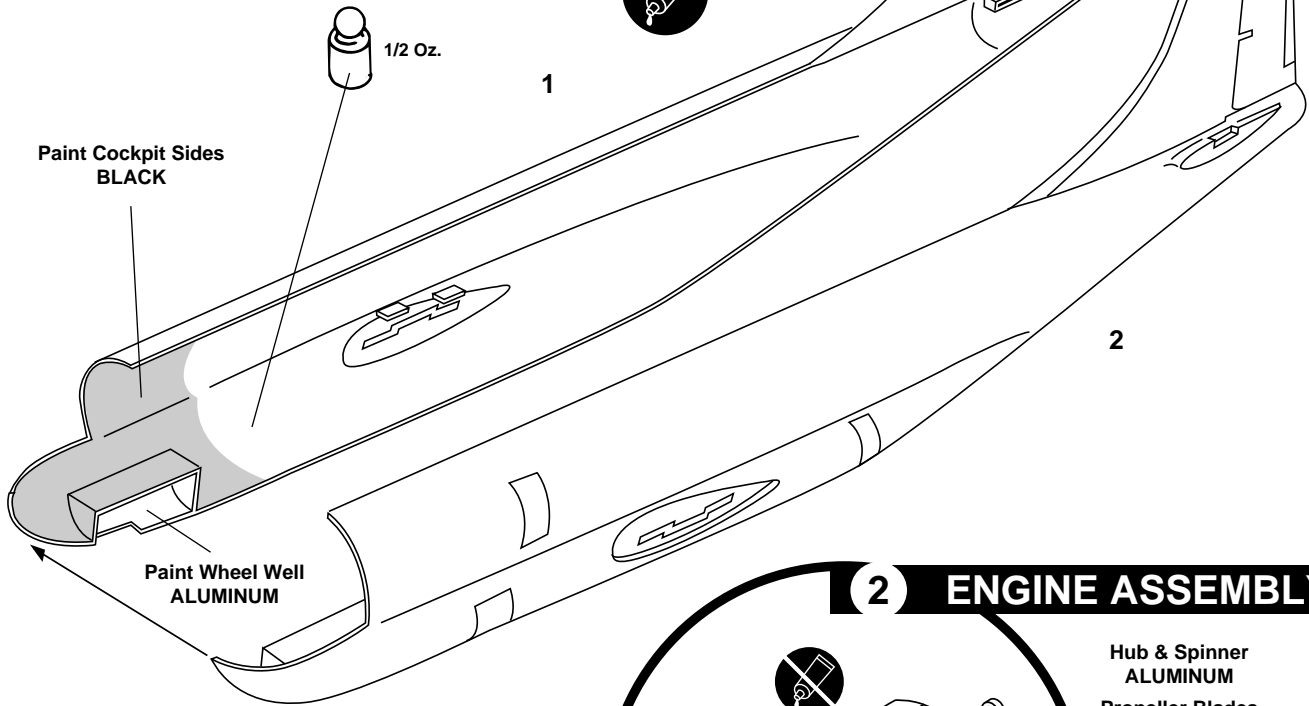


Cut away
Couper
Scheiden
Cortar
Tagliere
Cortar
Snijden

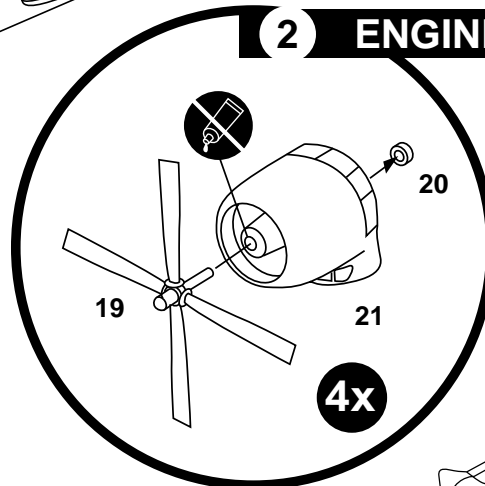


Optional parts
Choix
Auswahlmöglichkeit
Eleccion
Scelta
Opaco
Keuze

1 FUSELAGE ASSEMBLY

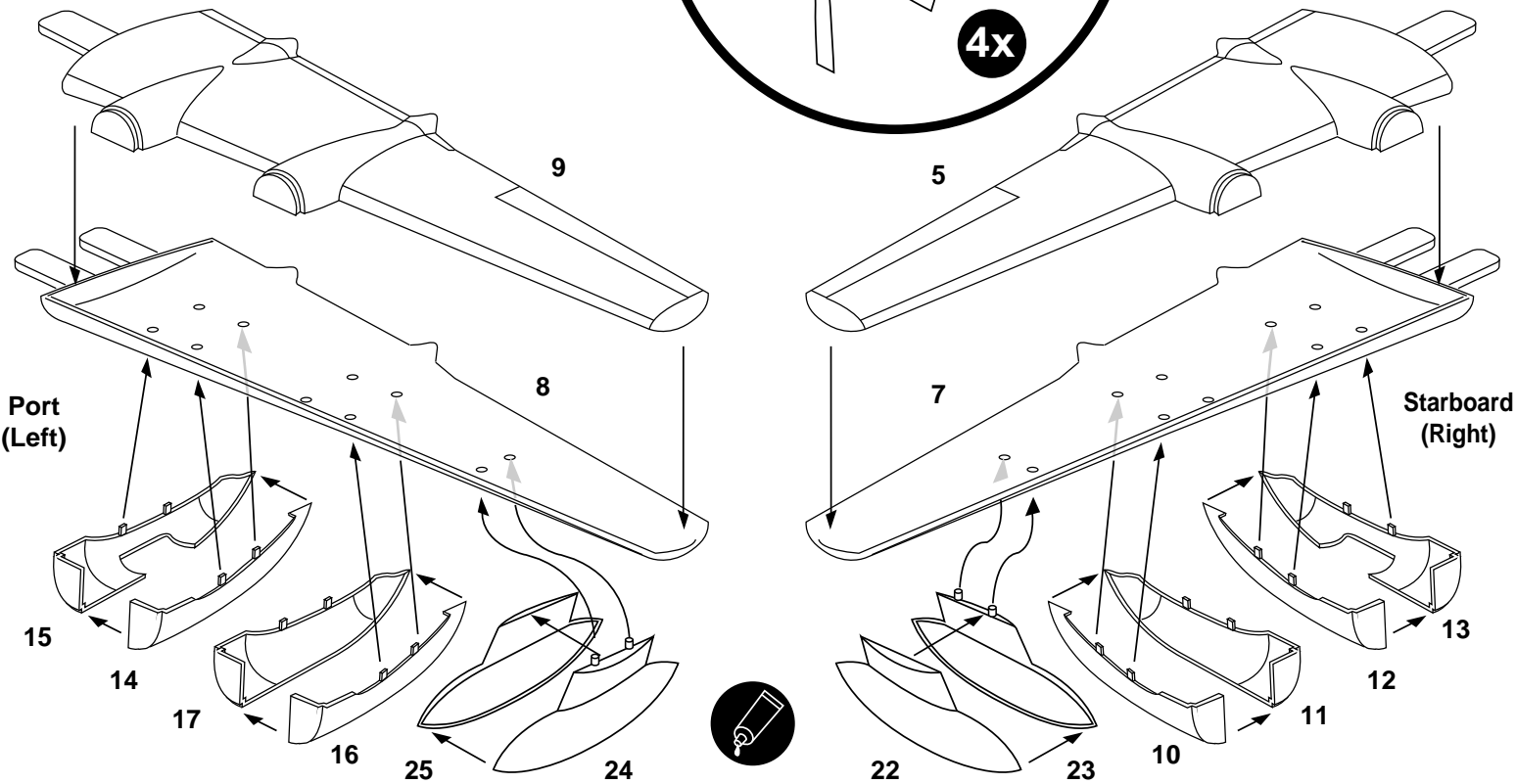


2 ENGINE ASSEMBLY

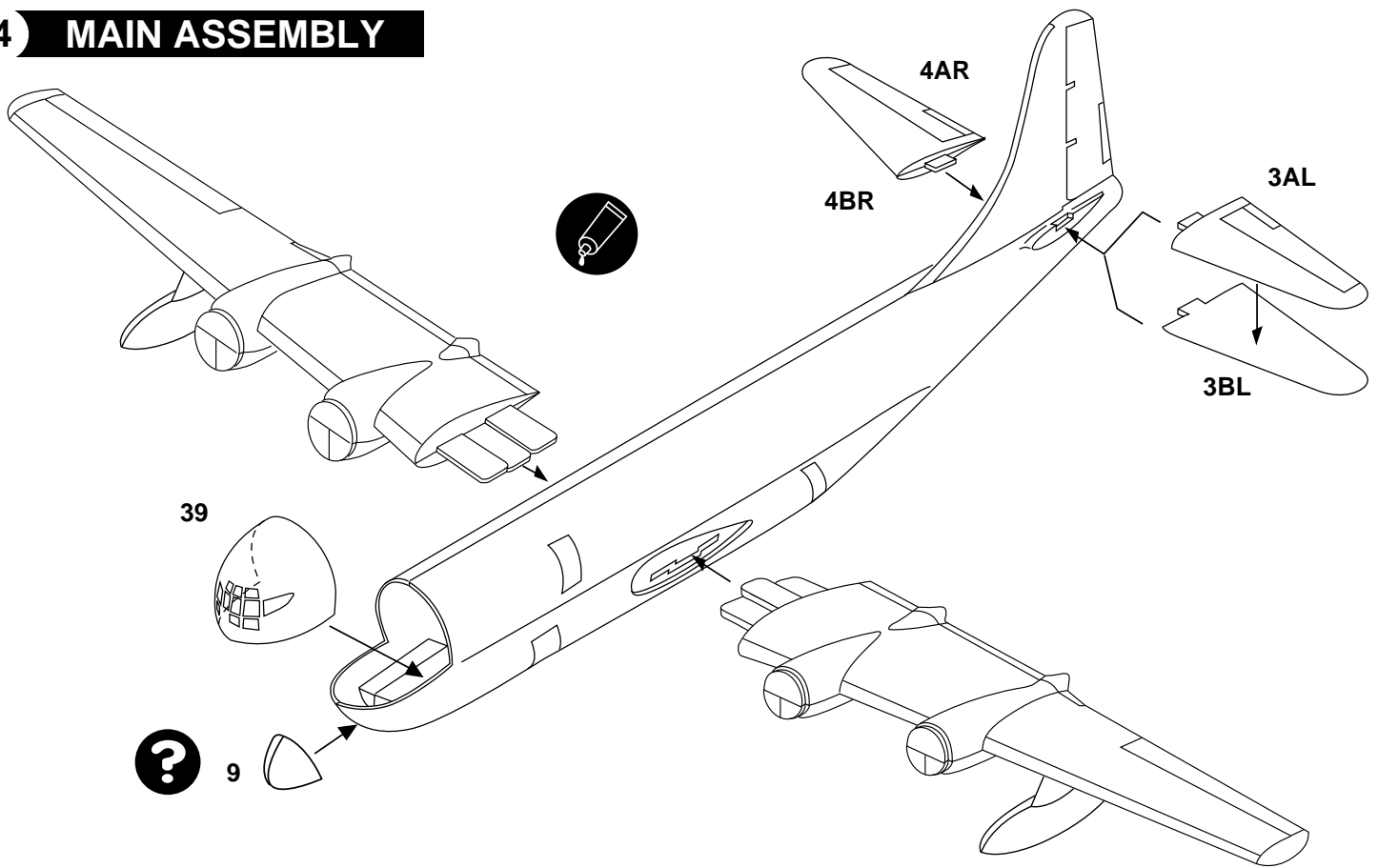


Hub & Spinner
ALUMINUM
Propeller Blades
BLACK

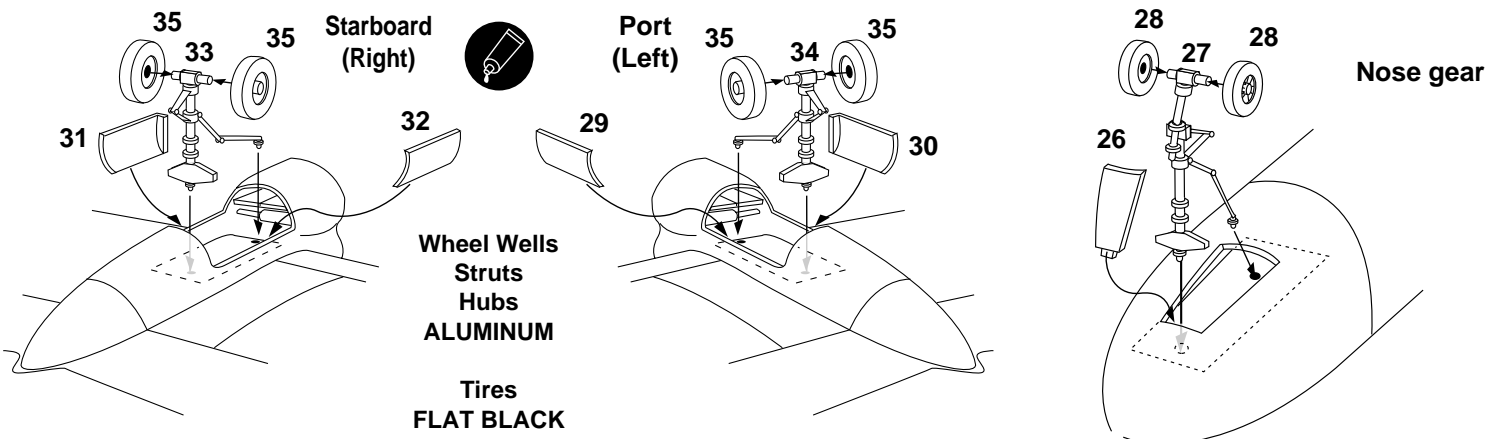
3 WING ASSEMBLY



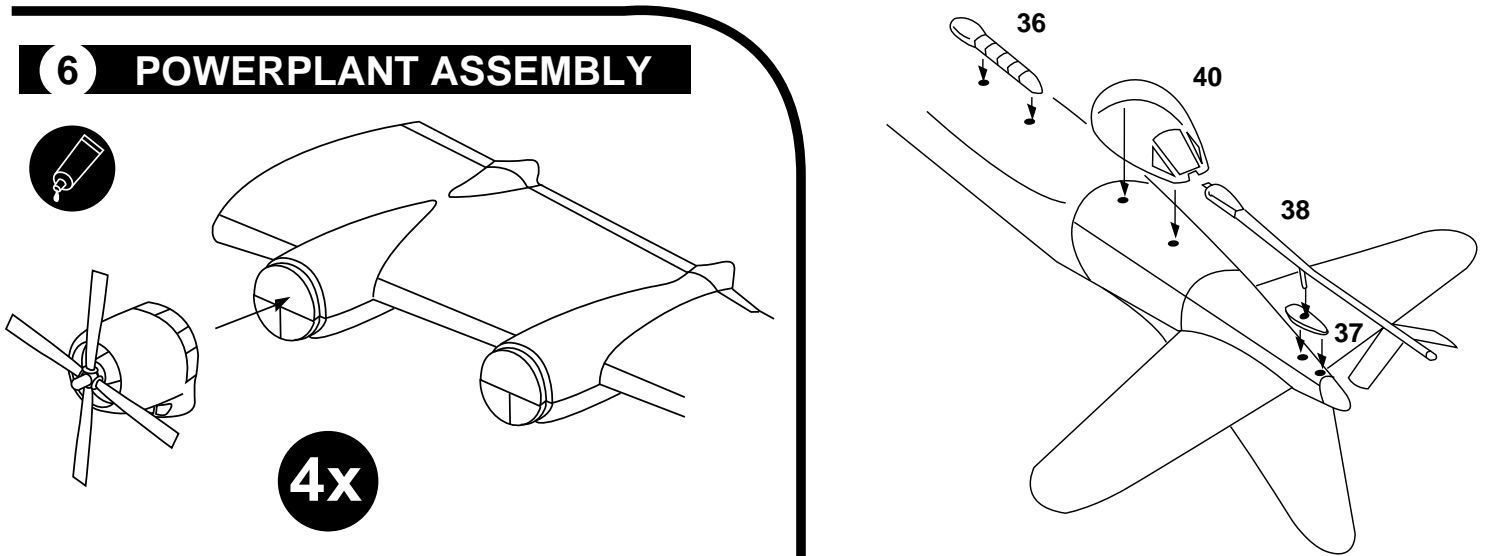
4 MAIN ASSEMBLY



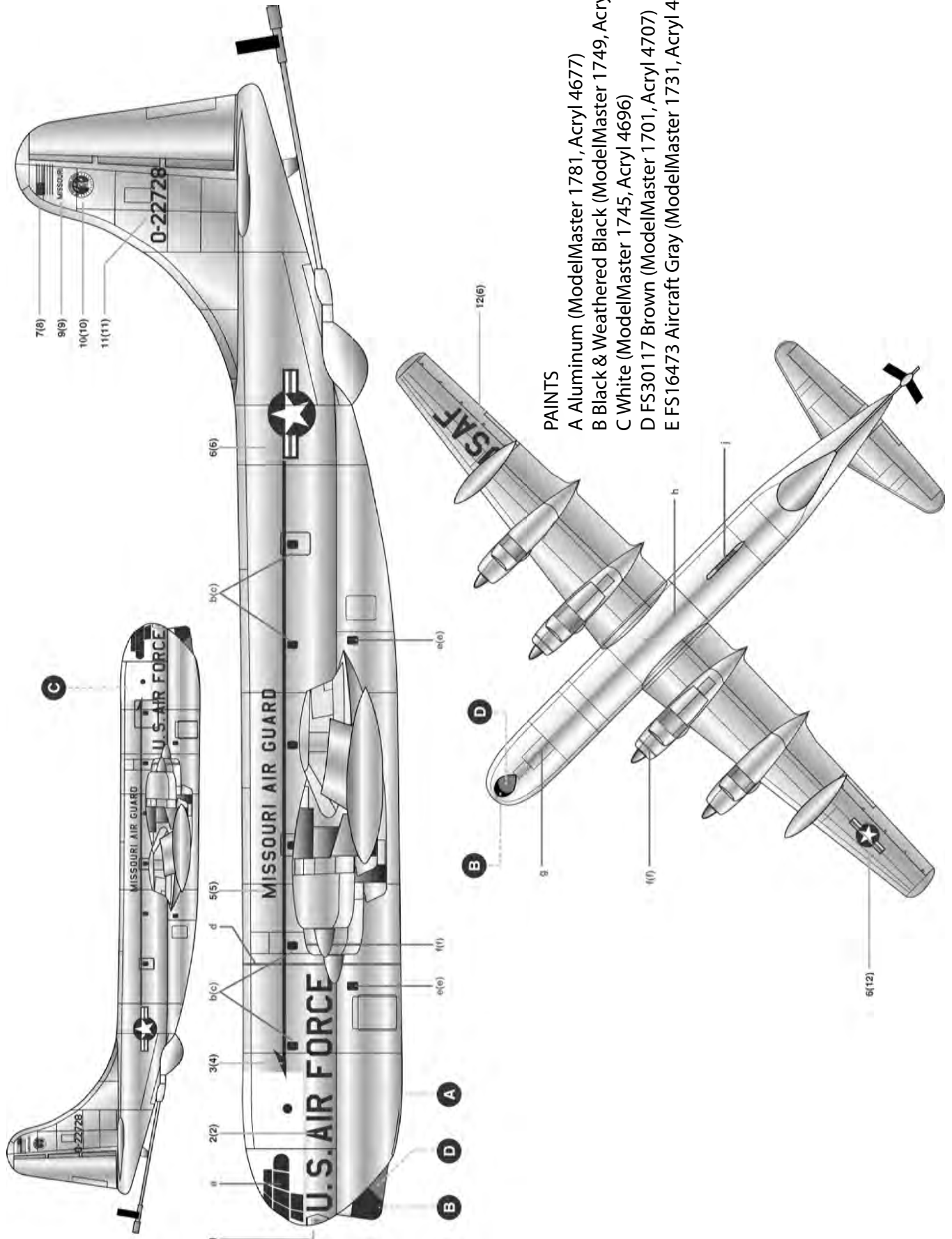
5 LANDING GEAR / REFUELLING BOOM



6 POWERPLANT ASSEMBLY



USAF KC-97G 52-2728, Missouri ANG, mid 1960's



USAF KC-97G 53-0272, California ANG, Germany, 1969

