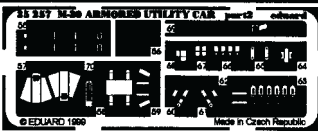
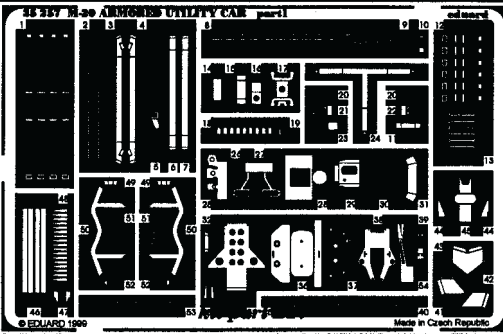









# M-20 Armored utility car

1/35 scale detail set for Tamiya kit

35 257



-  OPPOSITE SIDE
-  REMOVE
-  REPLACE
-  GRIND
-  BEND

The main assembly diagrams are organized into several sections:

- Top Left:** Shows the attachment of a film (part 37) to a component. Part 37 is a rectangular piece with a circular pattern.
- Top Middle:** Shows the attachment of kit part B32 (a long thin piece) to a component (part 54).
- Top Right:** Shows the final assembly of the wheel and suspension system, including parts 25, 27, 54, 58, and 70.
- Middle Left:** Shows the attachment of kit part F7 (a vertical bar) to kit part F6 (a fuel tank).
- Middle Center:** Shows the attachment of parts 65 and 14 to kit part C16 (a large structural component).
- Middle Right:** Shows the attachment of kit part B45 (a U-shaped piece) to kit part F22 (a side panel).
- Bottom Left (Right Side Inside):** Shows the attachment of parts 56 and 28 to kit part F11 (a side panel).
- Bottom Center:** Shows the attachment of parts 57 and 60 to kit part F11.
- Bottom Right (A):** Shows the attachment of parts 21 and 22 to a component.
- Bottom Left (A):** Shows the attachment of parts 11, 15, 67, and 68 to kit parts B8, B9, and B10.
- Bottom Right:** Shows the attachment of parts 2, 3, 4, 6, 7, 9, 18, 20, and 44 to kit parts A7+A8, C12, and C11.

