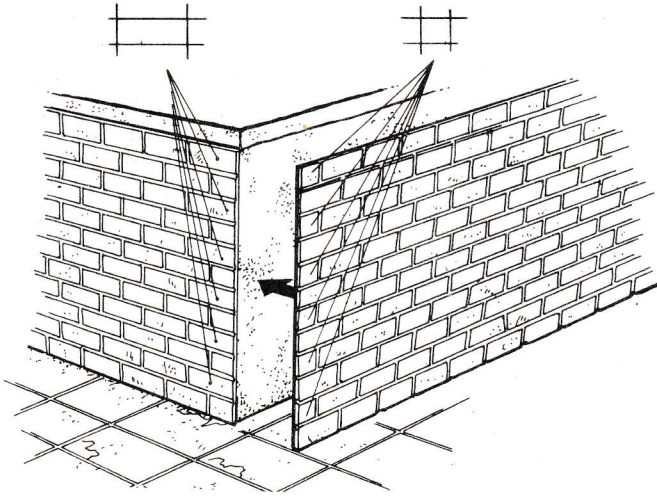


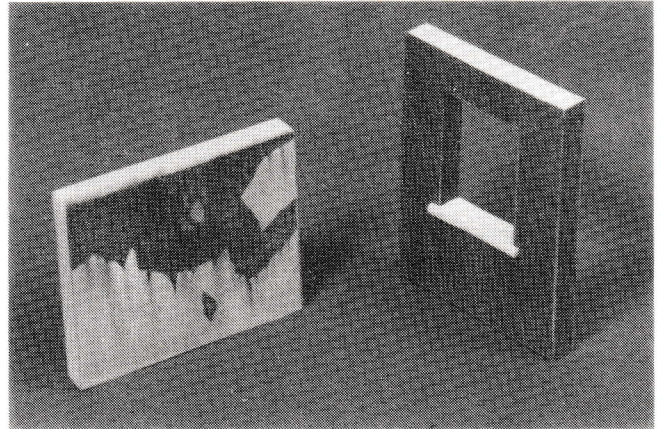


BRICK WALL SECTION

PCDA 35017

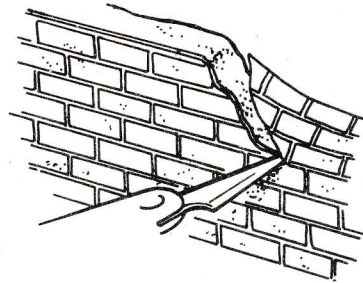


Be sure to fit the two wall sides together in a way that a small stone on the one end corresponds with a large stone on the other end.

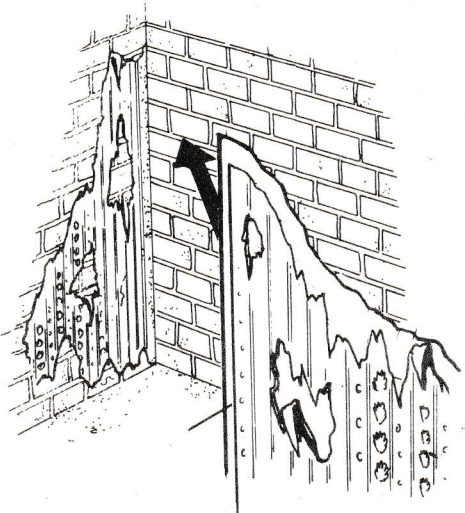
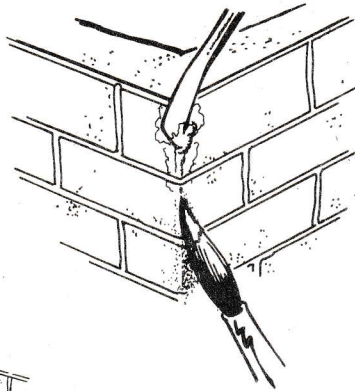


Fill the seems with a paste. Carefully sand the corner, but be sure not to damage the carton.

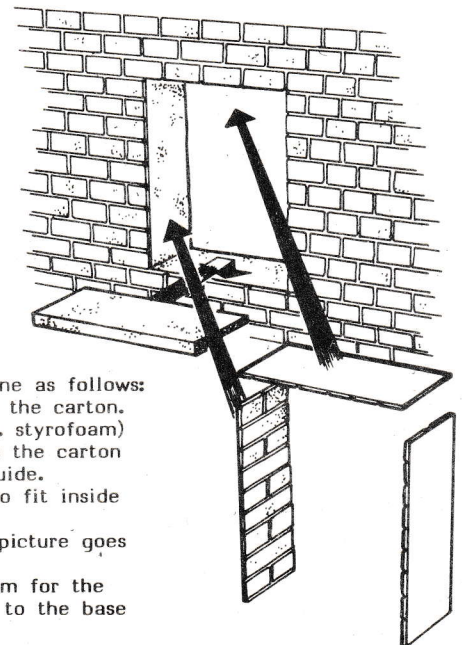
After sanding you should blend the corner with reddish paint.



If desired, the brick wall section can be used on any MDA-ruin. After gluing it to the wall trim the edges as shown.



If desired you can use a piece of thin, white carton and wallpaper to simulate the inside of a living room.
The 'how to' is shown in the above picture.



Making a window can be done as follows:

- 1/ Cut the desired hole in the carton.
- 2/ Glue it to the base (i.e. styrofoam)
- 3/ Cut it the same size as the carton using the latter as a guide.

- 4/ Cut 3 separate pieces to fit inside the frame.

What goes for the top picture goes for this fitting too.

- 5/ Cut a piece of styrofoam for the window-sill and glue it to the base of the frame.