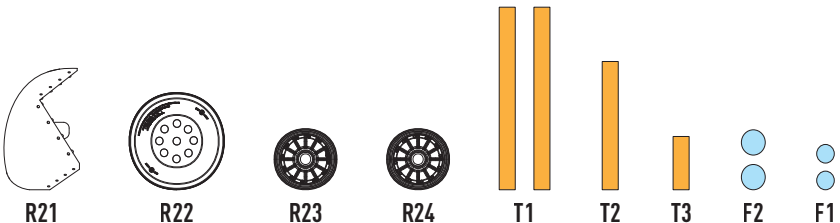
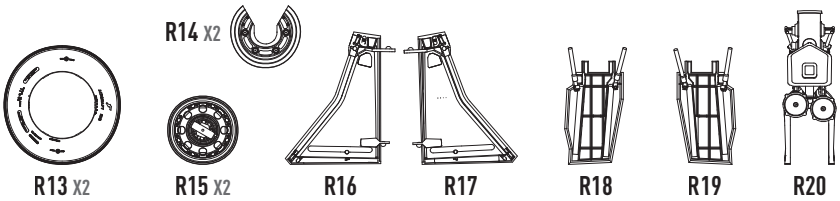
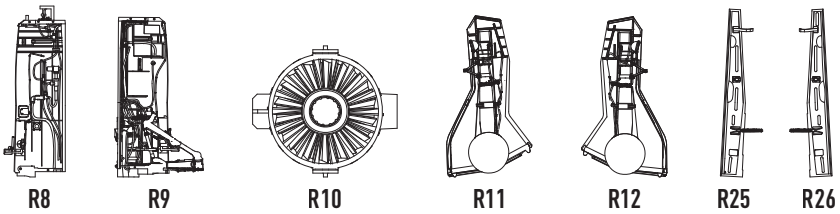
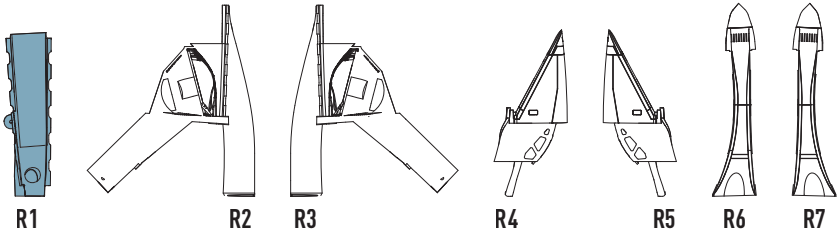




USE A SAW TO REMOVE SUPPORTS  
FROM 3D PRINTED PARTS

### DETAILS AFTER REMOVAL FROM SUPPORTS

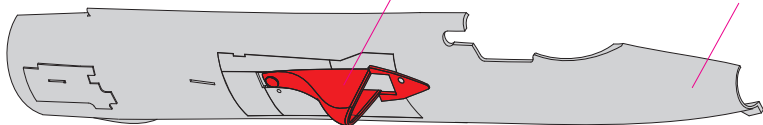


ALL ACTIONS ARE PERFORMED SYMMETRICALLY FOR LEFT AND RIGHT HALVES OF THE FUSELAGE

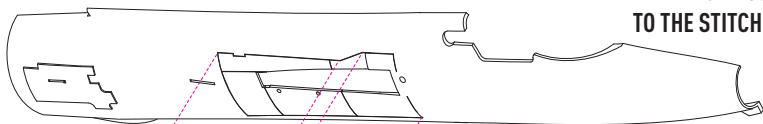
**1** FOR A SINGLE OPTION

CUT

PART A1 FROM F-105D  
HOBBY BOSS KIT

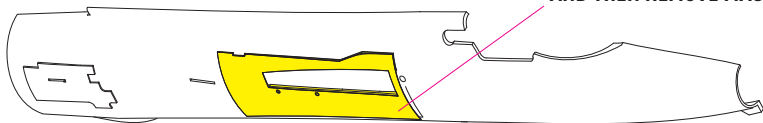


APPLY MASK ACCORDING  
TO THE STITCHING LINE



M1

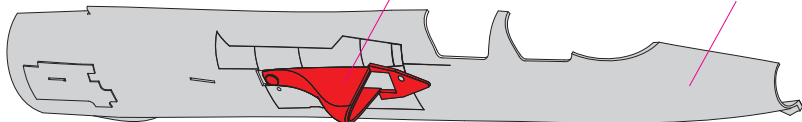
CUT PLASTIC ALONG THE HOLE IN MASK  
AND THEN REMOVE MASK



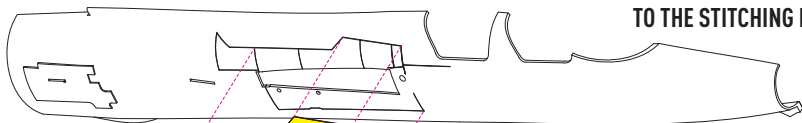
FOR THE DOUBLE VERSION

CUT

PART L22 FROM F-105G  
HOBBY BOSS KIT

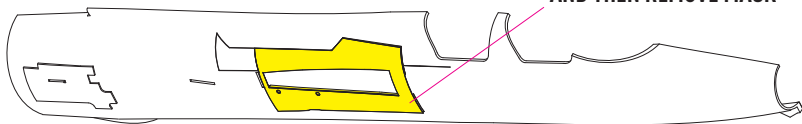


APPLY MASK ACCORDING  
TO THE STITCHING LINE



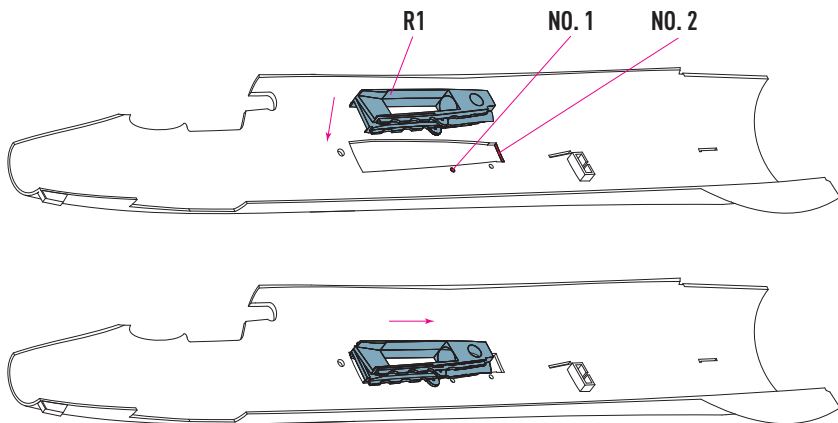
M3

CUT PLASTIC ALONG THE HOLE IN MASK  
AND THEN REMOVE MASK

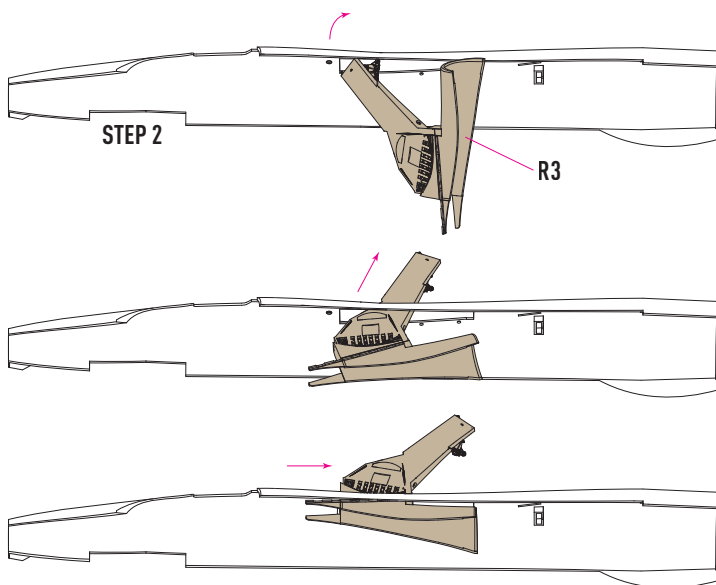


**2** THE HOLE MUST BE ADJUSTED IN SUCH A WAY THAT THE CONDUCTOR "DRIVES INTO" THE LANDING GROOVES

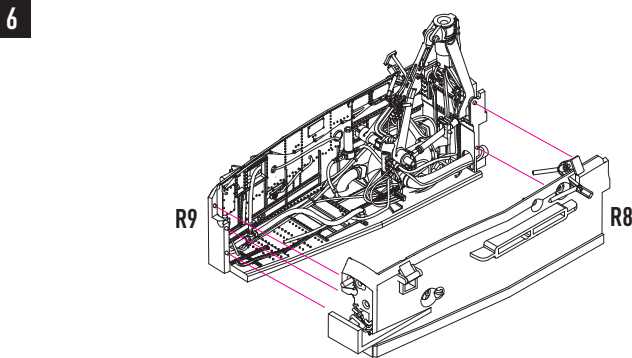
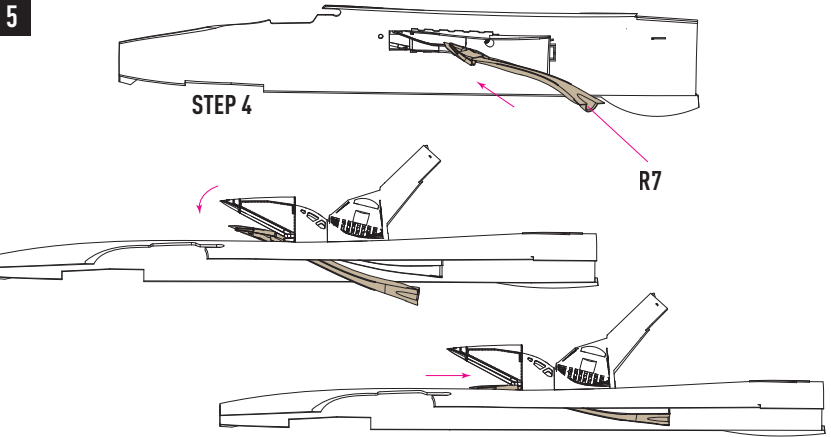
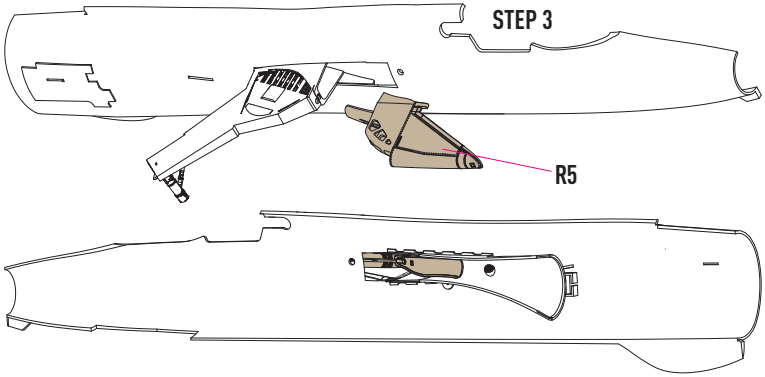
NO. 1 - A HOLE, THE AXIS OF WHICH MUST COINCIDE WITH THE HOLE OF THE CONDUCTOR EAR.  
NO. 2 - THE BASIC CONTACT SURFACE IS IN EACH CASTING.



**3** AFTER THE PREPARATION OF SEATS IS COMPLETED, THE CONDUCTOR IS REMOVED AND PLACED IN HIS PLACE, USING THE SAME GUIDELINES, PART R3 IS INSTALLED

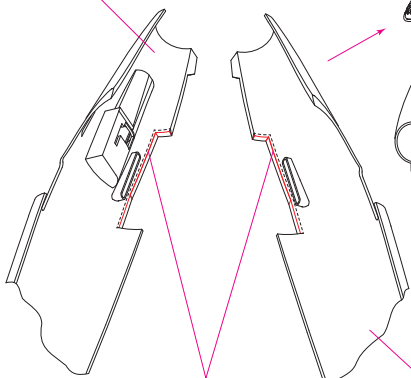
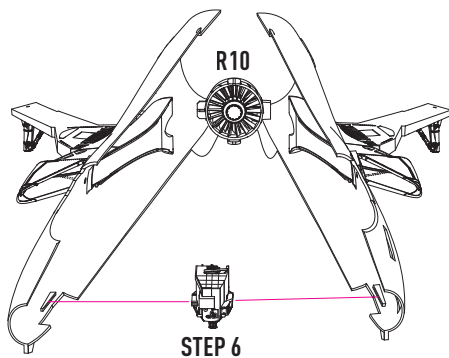


**4** BEFORE INSTALLATION, THE PART MUST BE PAINTED ACCORDING TO THE REPRODUCED PROTOTYPE



7

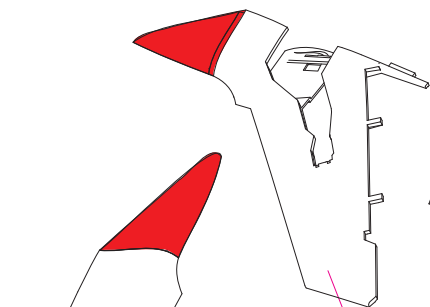
PART A17 FROM  
HOBBY BOSS KIT



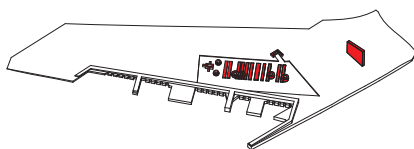
REMOVE CHAMFER AT  
AN ANGLE OF 45°

PART A1 FROM  
HOBBY BOSS KIT

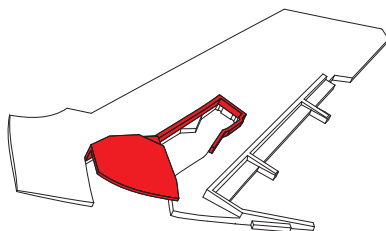
8 CUT ALONG THE STITCHING LINE THE PARTS OF THE PARTS INDICATED IN RED ON BOTH SIDES OF THE FUSELAGE OF THE MODEL



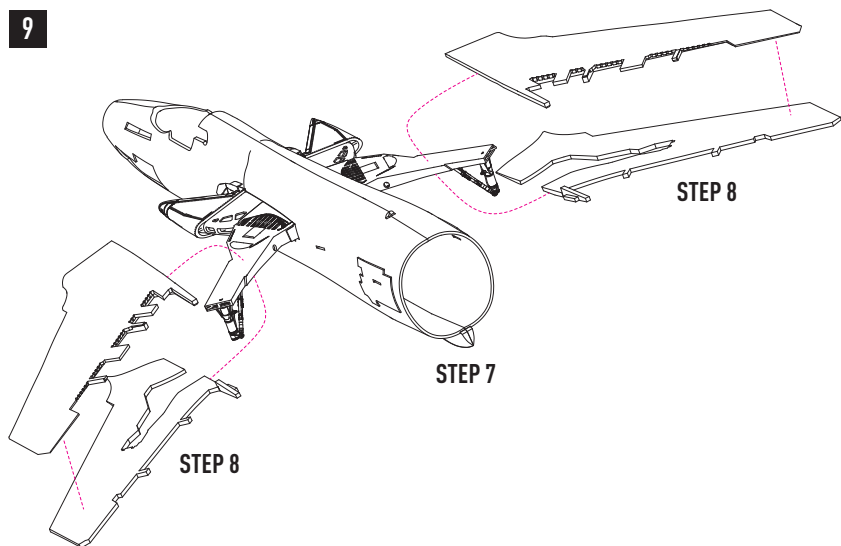
PART C22 FROM  
HOBBY BOSS KIT



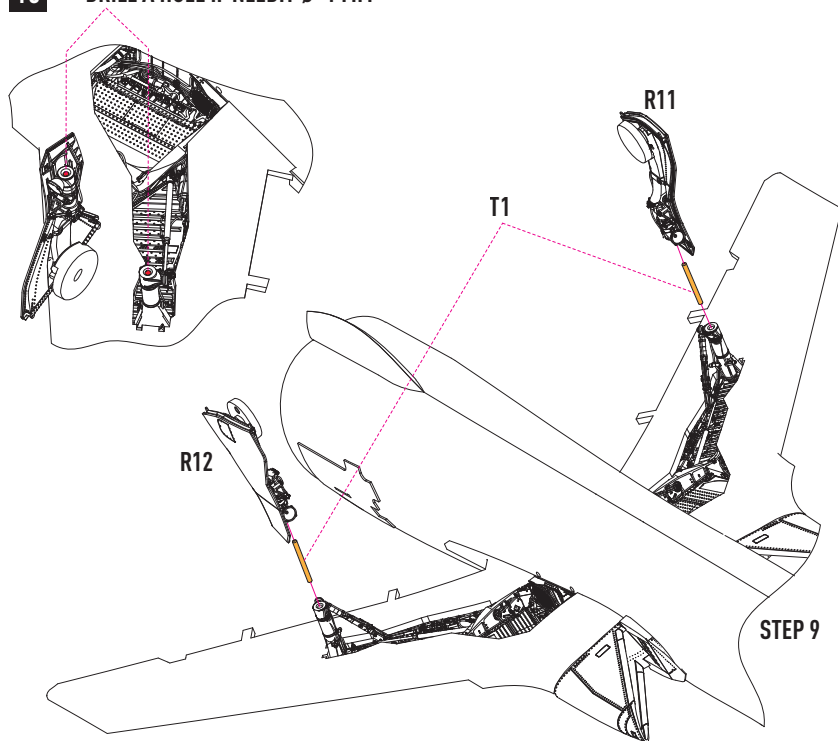
PART C1 FROM  
HOBBY BOSS KIT



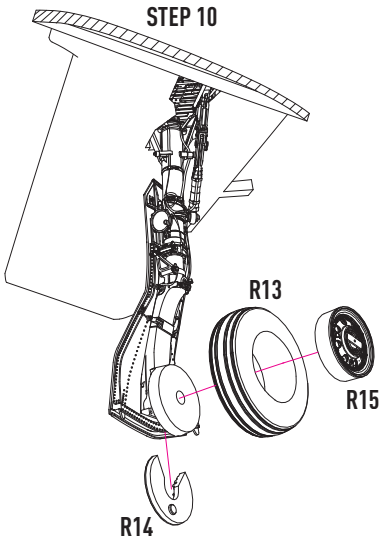
9



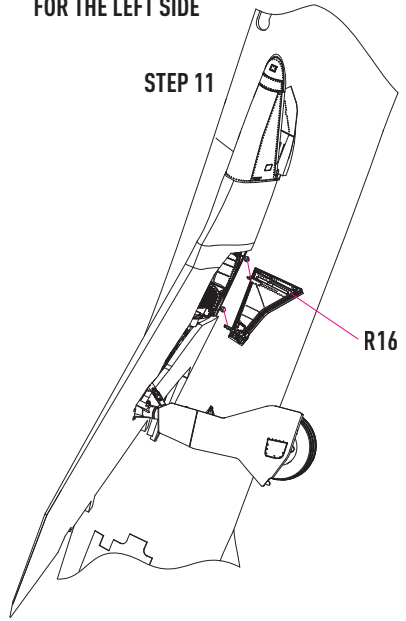
**10** DRILL A HOLE IF NEEDIT  $\varnothing=1$  MM



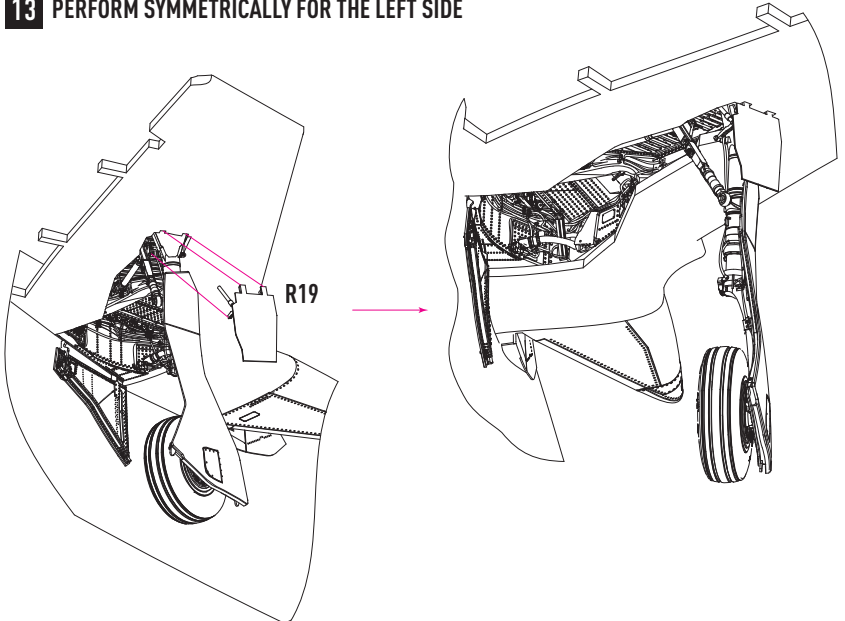
**11** PERFORM SYMMETRICALLY  
FOR THE LEFT SIDE



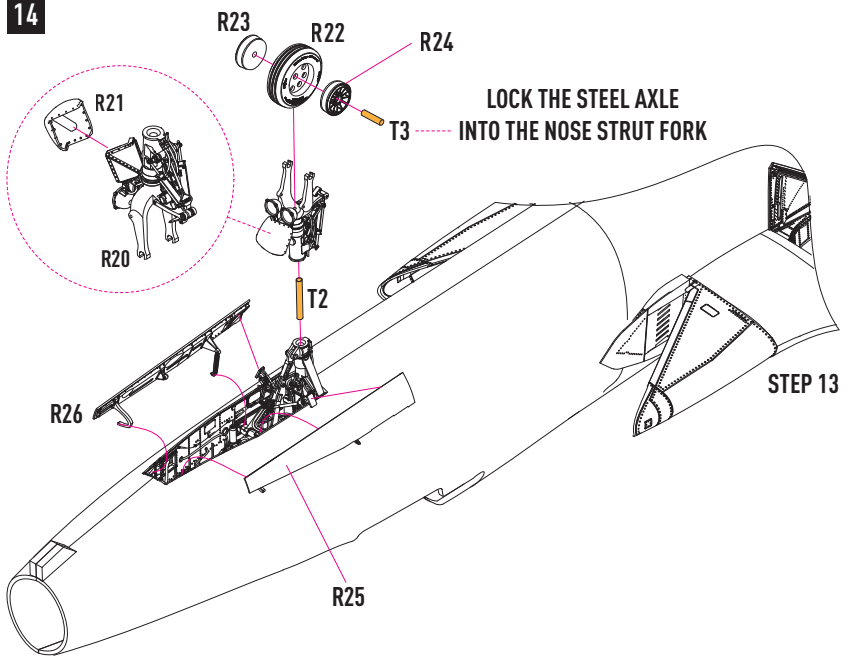
**12** PERFORM SYMMETRICALLY  
FOR THE LEFT SIDE



**13** PERFORM SYMMETRICALLY FOR THE LEFT SIDE



14



15

