



EA-6B PROWLER VMAQ-2 PLAYBOYS

The Northrop Grumman (formerly Grumman) EA-6B Prowler is a twin-engine, four-seat, mid-wing electronic-warfare aircraft derived from the A-6 Intruder airframe. The EA-6A was the initial electronic warfare version of the A-6 used by the United States Marine Corps and United States Navy. Development on the more advanced EA-6B began in 1966. An EA-6B aircrew consists of one pilot and three Electronic Countermeasures Officers, though it is not uncommon for only two ECMOs to be used on missions. It is capable of carrying and firing anti-radiation missiles (ARMs), such as the AGM-88 HARM missile. The USN has a fleet of 124 Prowlers which equip USN aircraft carriers, forward land bases and the US Marine Corps squadrons. Its mission was to support the Marine Air-Ground Task Force (MAGTF) commander by conducting airborne electronic warfare, day or night, under all weather conditions during expeditionary, joint, or combined operations.

On 1 July 1992, VMAQ-2, the largest tactical squadron in Marine Aviation, was reorganized into three squadrons: VMAQ-1 "Banshees", VMAQ-2 "Playboys", and VMAQ-3 "Moondogs". In 1993, outside pressure forced the Marine Corps to direct the squadron to change their name and logo from "Playboys" to something more politically correct.

- 
Drill
- 
Remove
- 
2 Set
- 
Bend
- 
Optional
- 
Decal
- 
Super Glue
- 
Fill Hole
- 
No Cement
- 
Be Careful

TOOLS RECOMMENDED

Cement 

Side Cutter 

Modeling Knife 

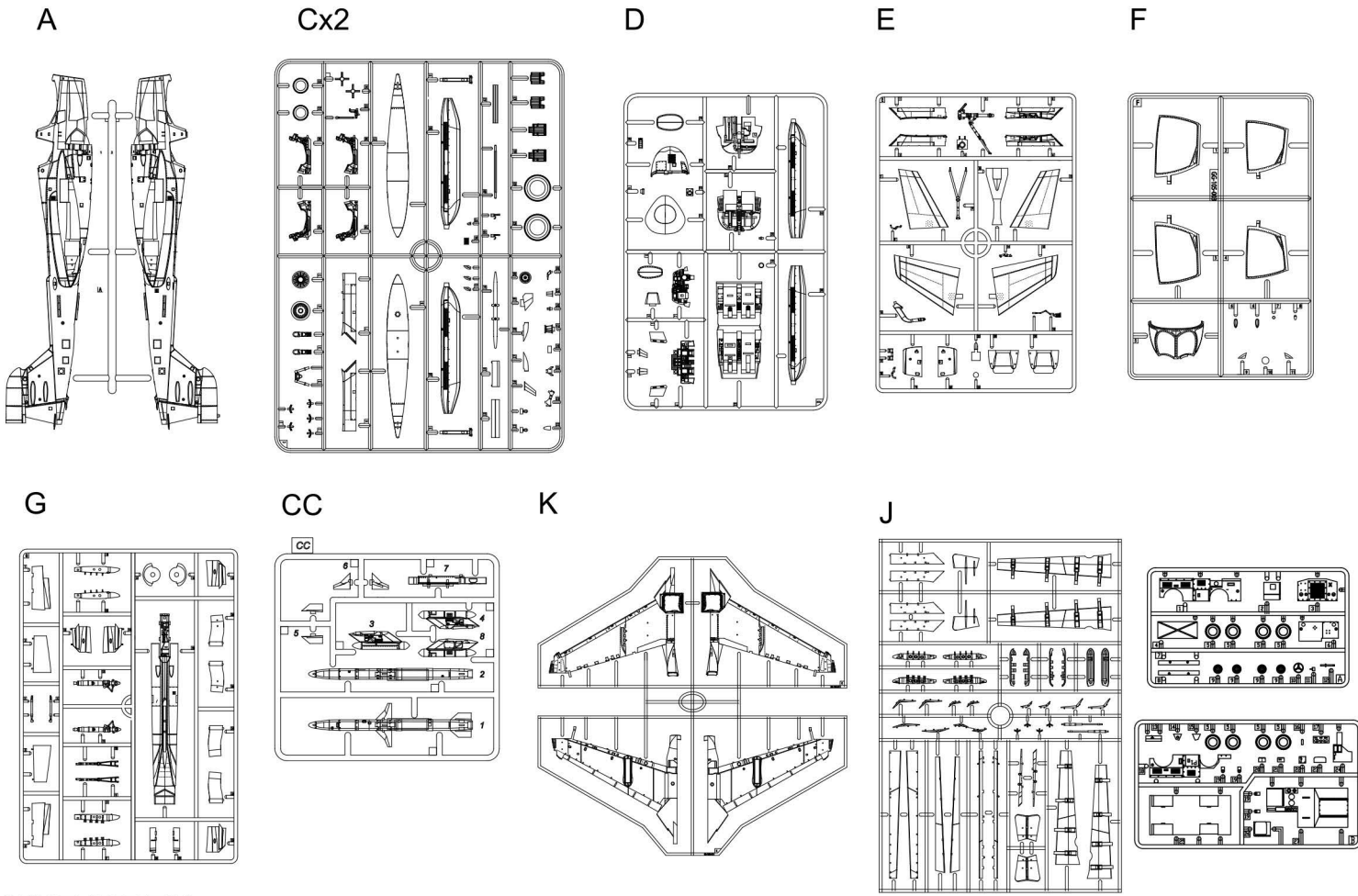
Tweezers 

CAUTION

- *Read carefully and fully understand the instructions before commencing assembly.
- *Keep out of reach of children. Children must not be allowed to put any parts in their mouths, or pull plastic bag over their heads.
- *When using adhesives and paints, please make sure not to use them in closed room or near the fire.
- *When assembling this kit, tools including knives are used. Extra care should be taken to avoid injury.

WARNING: CONTAIN SMALL PARTS NOT FOR CHILDREN UNDER 14 YEARS OF AGE.

1/48 SCALE AIRCRAFT SERIES NO: K48112



PAINT INDEX

COLOR	AMMO MIG	VALLEJO MODEL COLOR	VALLEJO MODEL AIR	GSI CREOS MR. COLOR	TAMIYA ENAMEL/ACRYLIC	HUMBROL ENAMEL
CREMEWEISS	A.MIG-017	918	270	316	-	-
RUBBER&TIRES	A.MIG-033	306	315	137	XF-85	-
FLAT BLACK	A.MIG-046	950	057	33	XF-18	33
GLOSS WHITE	A.MIG-047	951	001	1	X-2	34
CLEAR RED	A.MIG-093	934	-	47	X-27	1321
Red (FS 31136)	A.MIG-121	957	-	327	-	-
MARINE BLUE	A.MIG-123	930	004	-	XF-8	-
Yellow (FS 13538)	A.MIG-125	915	078	329	-	154
BURNT IRON	A.MIG-187	-	073	61	XF-84	-
STEEL	A.MIG-191	864	065	28	-	27003
GHOST GREY(FS 36320)	A.MIG-208	-	047	307	-	126
Blue Grey (FS 35237)	A.MIG-210	-	049	337	-	145
Grey (FS 36375)	A.MIG-203	990	-	308	-	-
SATIN BLACK	A.MIG-032	861	-	2	X-1	21
MIDDLESTONE	A.MIG-200	-	-	313	-	-
FS 16440	-	-	-	315	-	-

AFTERMARKET SERVICES CARD

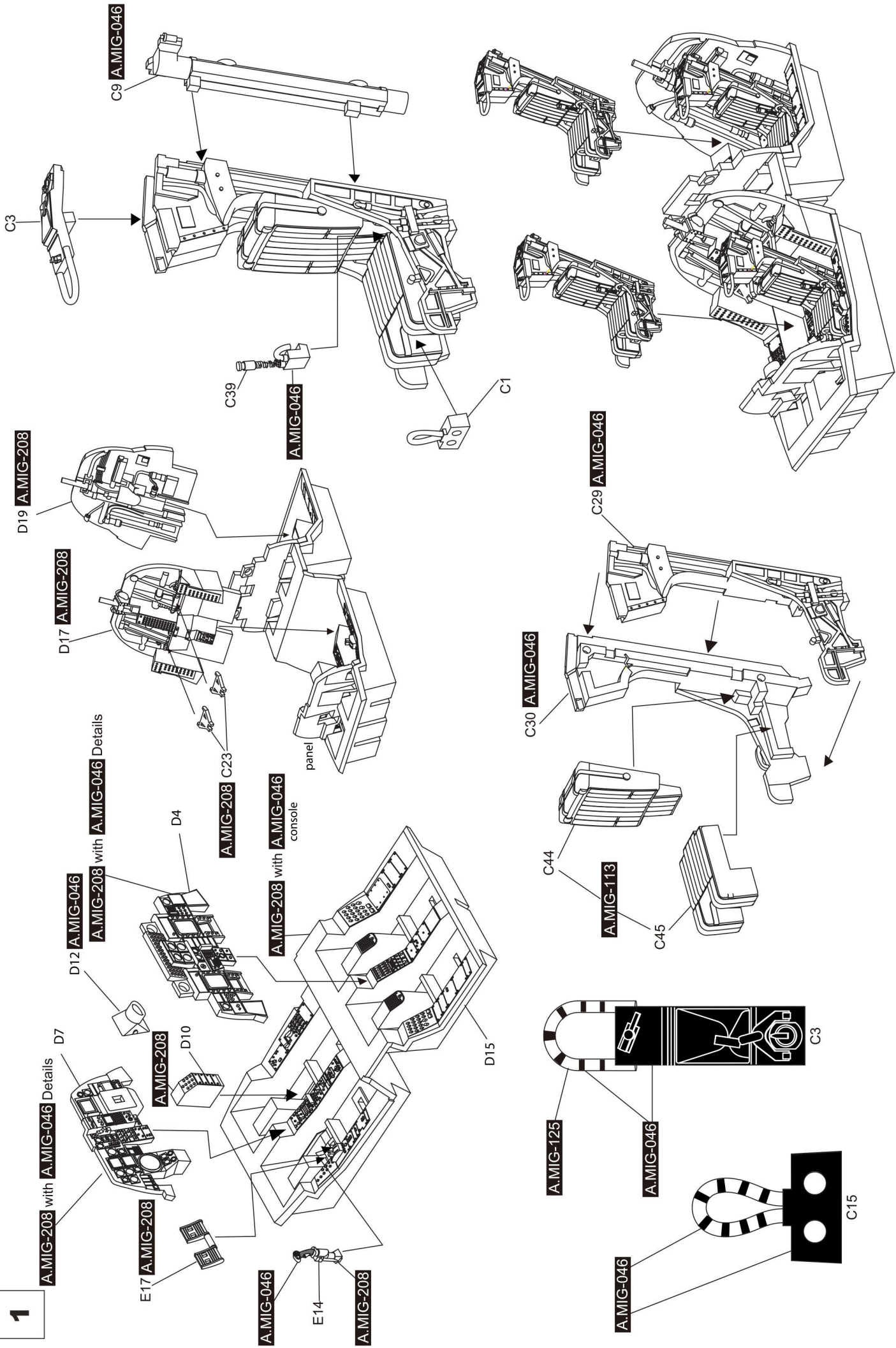
When requesting replacement parts, please take or send this form to your local dealer so that the parts required can be correctly identified. Please note that specifications and availability are subject to change without notice.

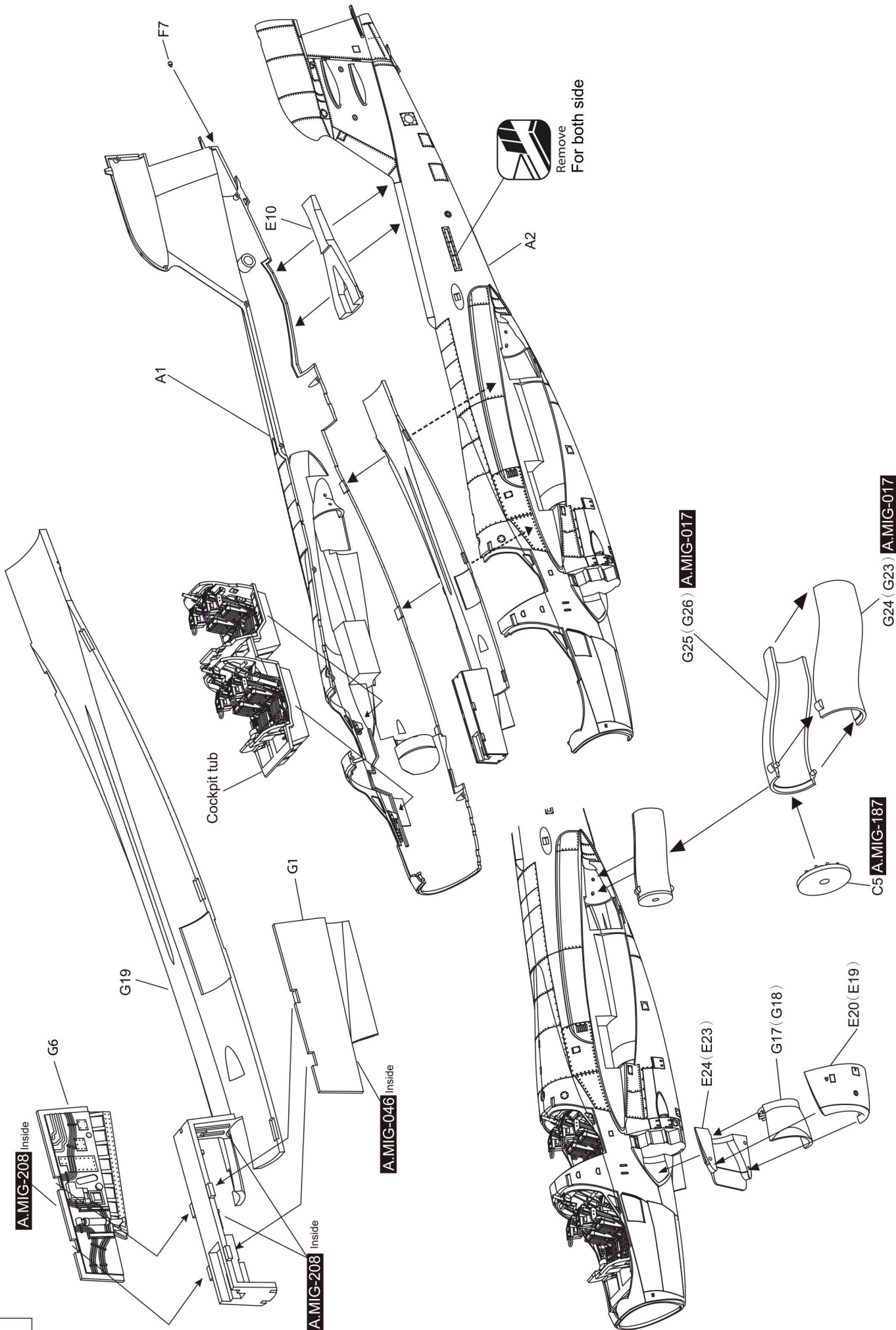
or visit <http://www.kineticmodel.com> for latest information.
For more information, please contact services@kineticmodel.com

For Color Profile, please go to www.kineticmodel.com for download (type the kit# and go for manual/painting guide)

Part Code	K48112	Qty	Item
00-105-001	EA-6B FUSELAGE	1	A
00-105-003	EA-6B ECM POD/SEAT	2	C
00-105-004	EA-6B COCKPIT	1	D
00-105-005	EA-6B WINGS#2	1	E
00-105-006	EA-6B CLEAR PARTS	1	F
00-105-007	EA-6B UNDERCARRIGE	1	G
00-105-011	NEW EA-6B WING	1	K
00-124-012	1/48 A-6A METAL WINGS PARTS	1	J
00-143-002	1/48 CBU-20 W/ MER + AGM-88	2	WEAPON
00-168-001	1/48 EPU Part A	1	A
00-168-002	1/48 EPU Part B	1	B
01-105-48112	EA-6B PROWLER VMQ-2 PLAYBOY	1	
03-105-48112	EA-6B PROWLER VMQ-2 PLAYBOY	1	

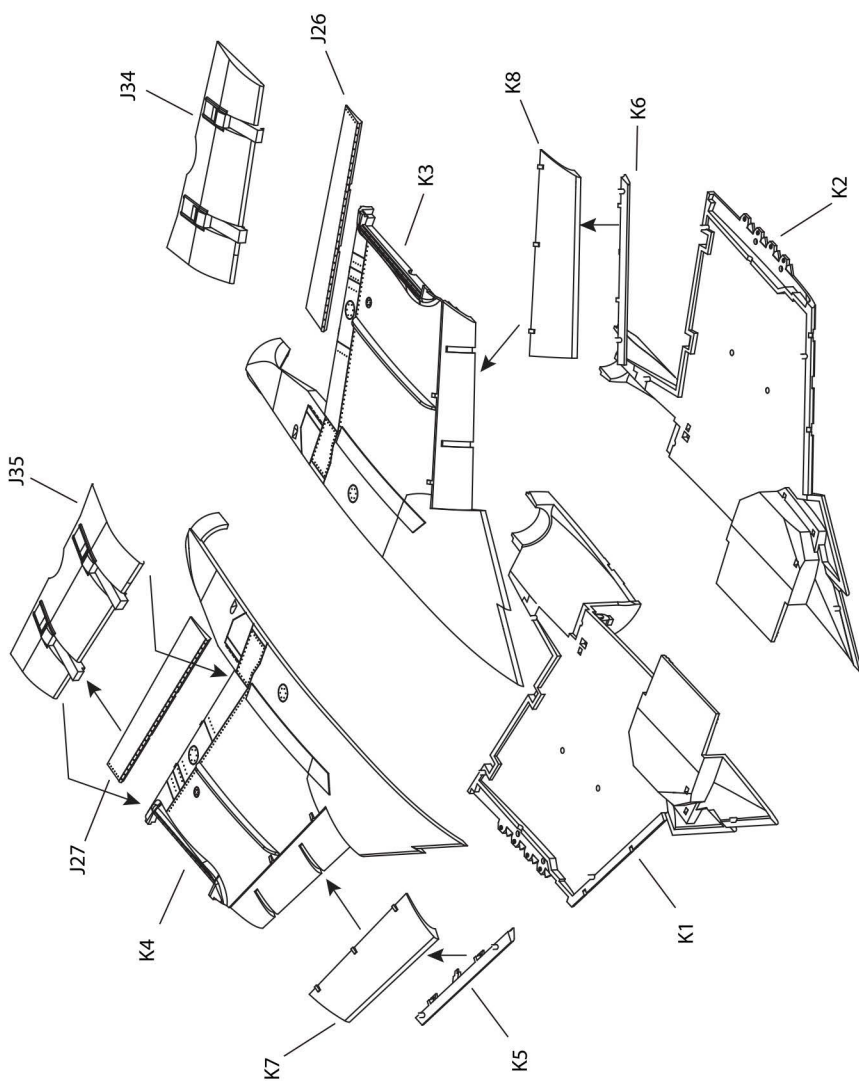
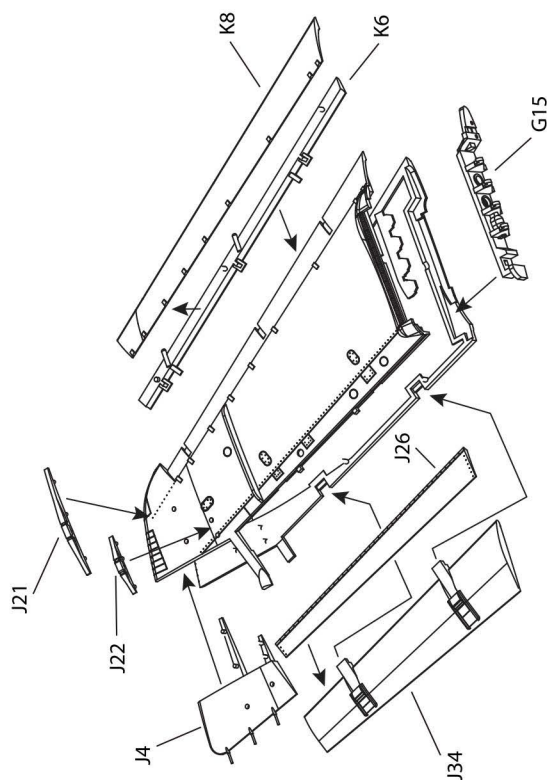
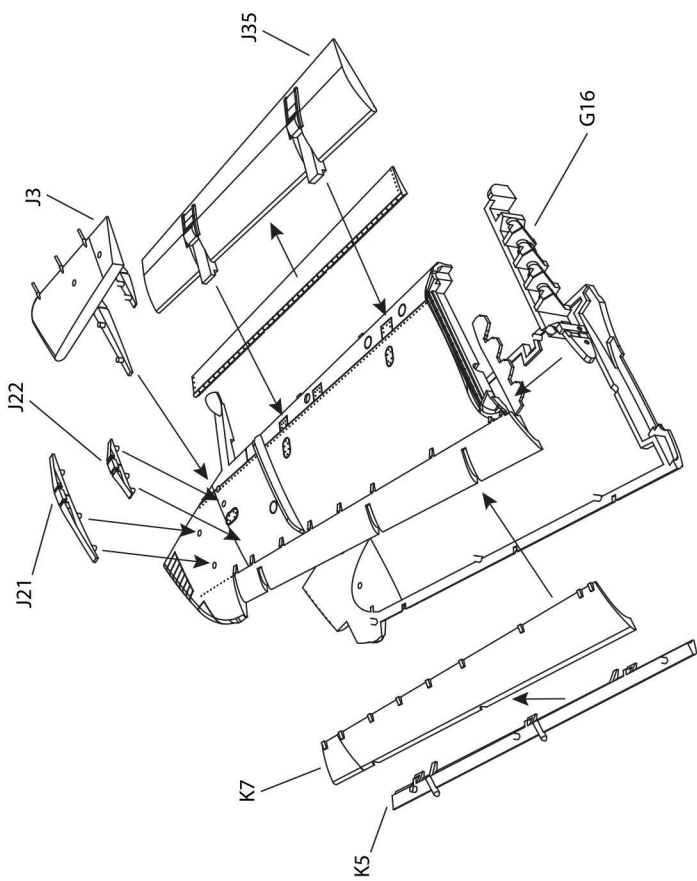
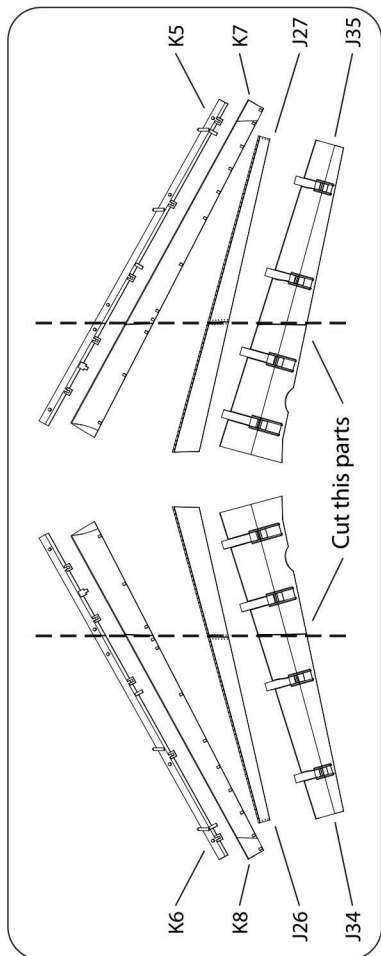
1



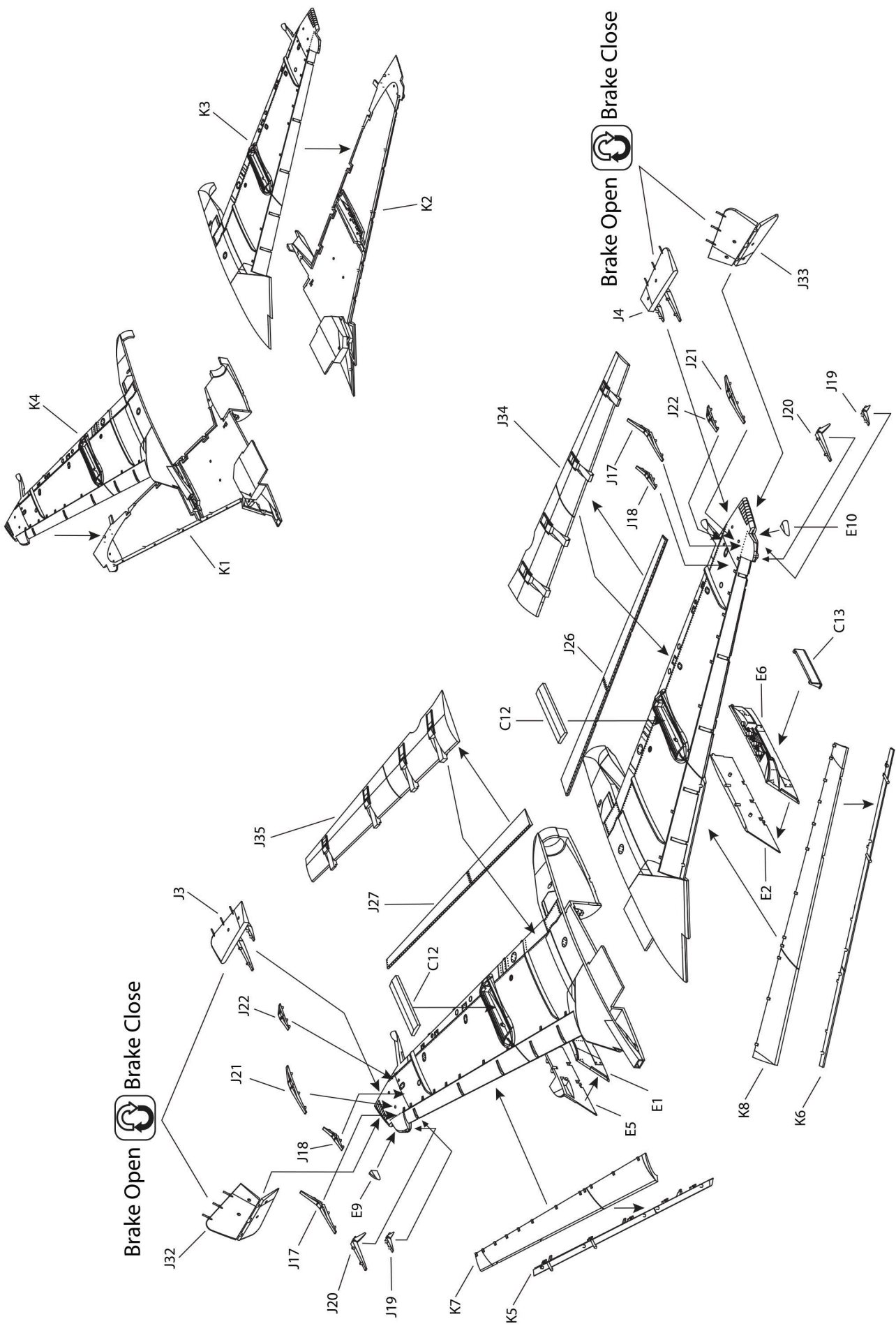


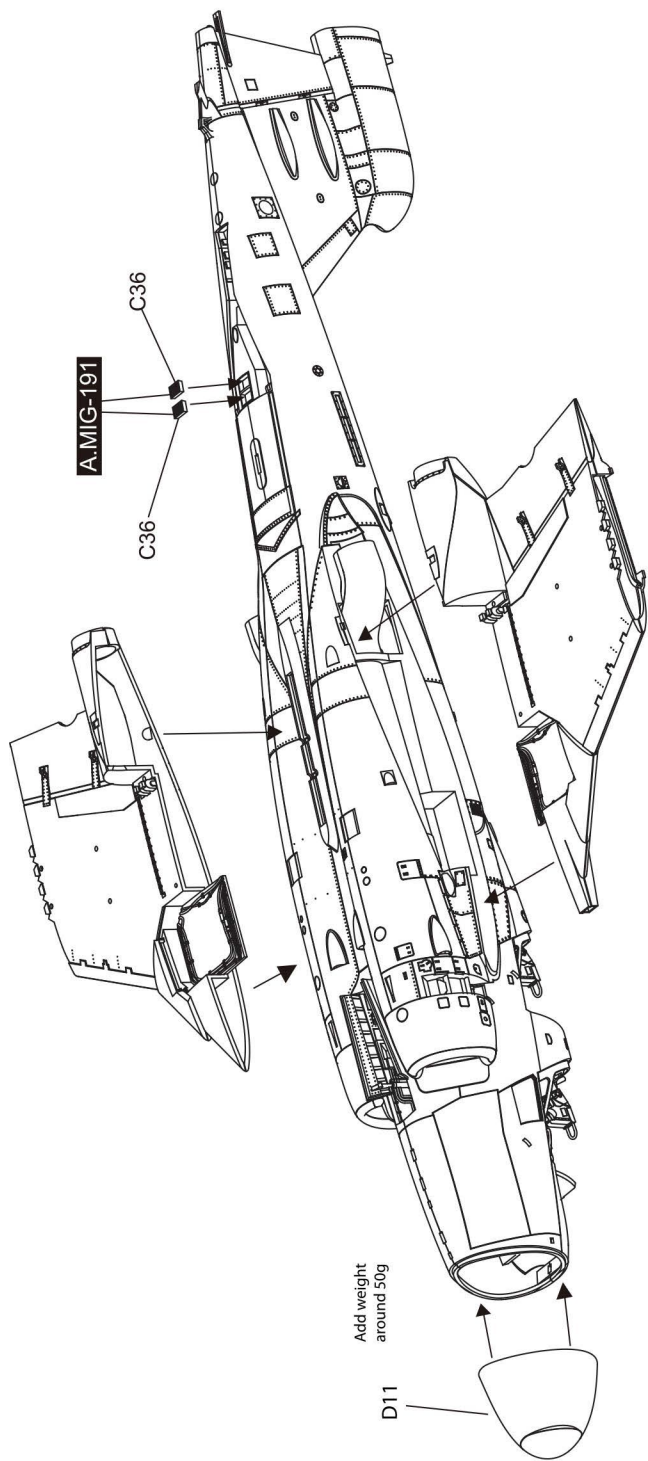
3 FOLD WING OPTION

3

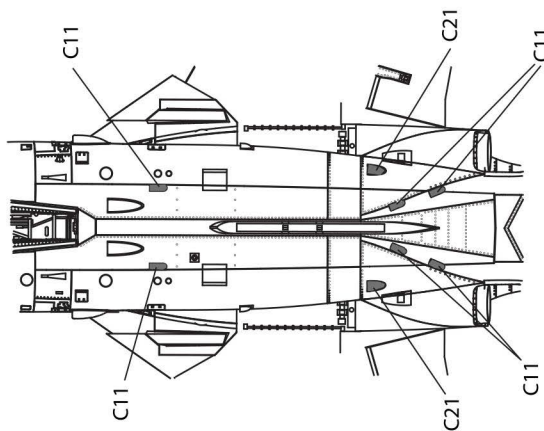
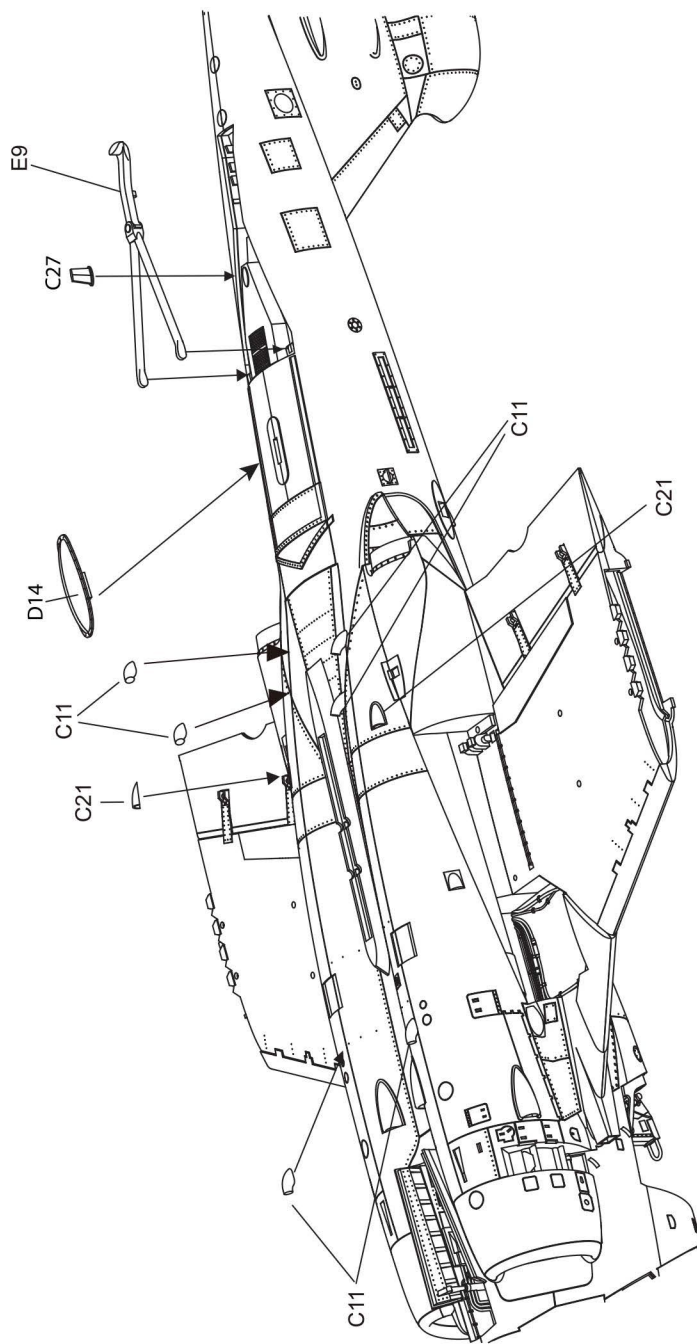


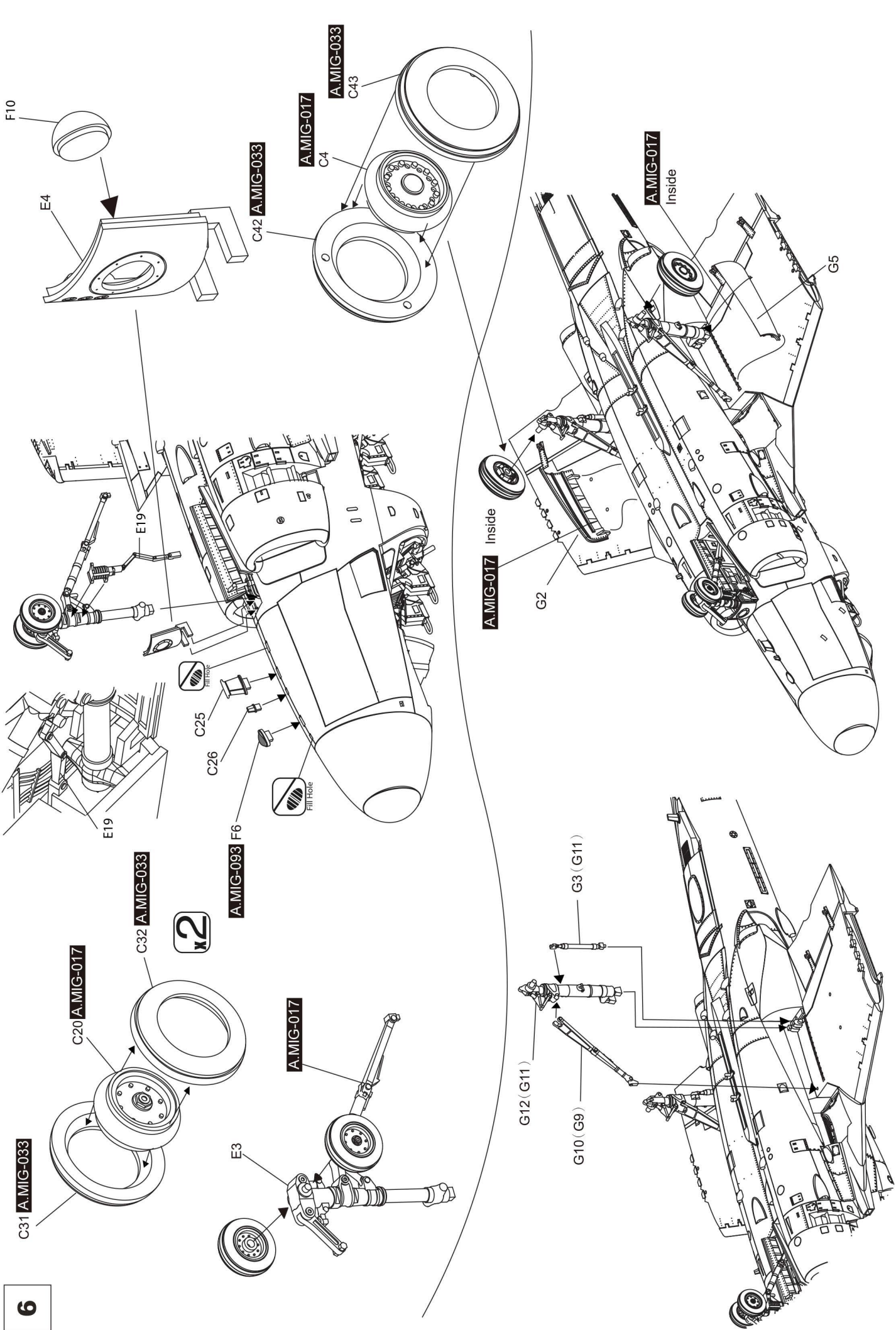
4 FULL WING EXTEND

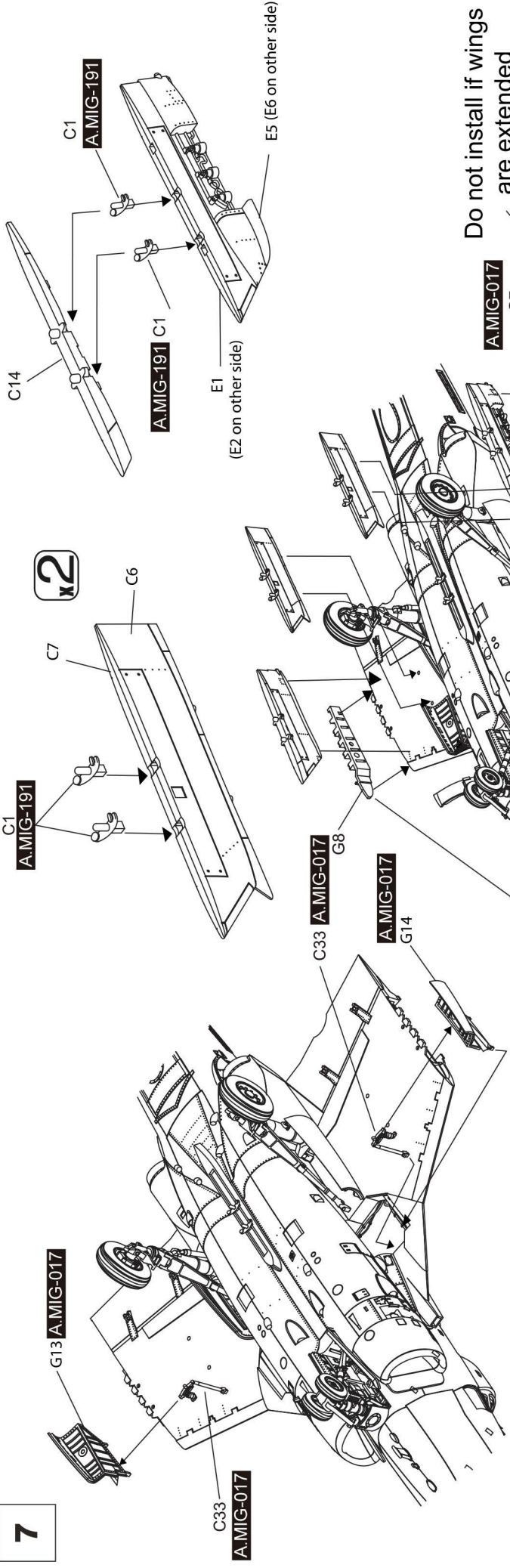




Add weight
around 50g



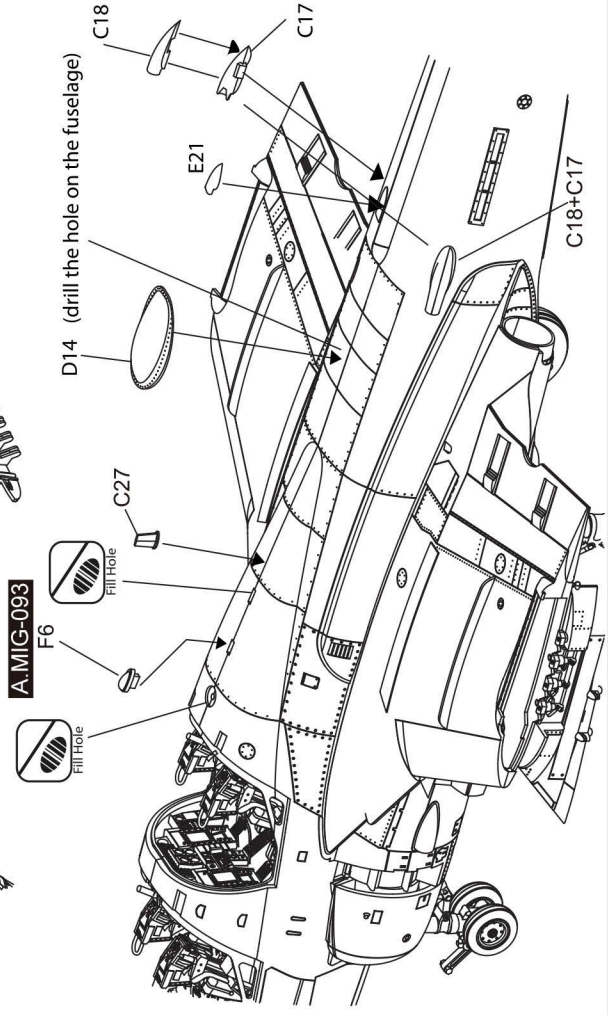
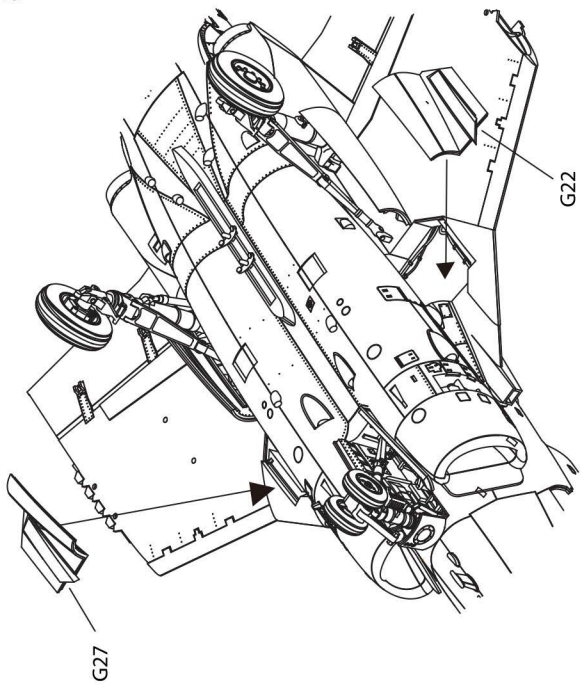


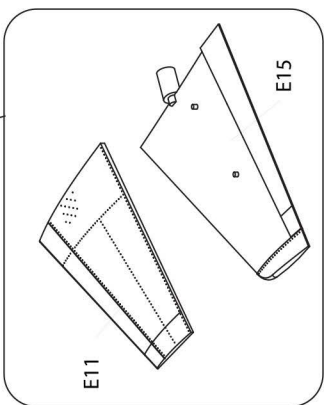
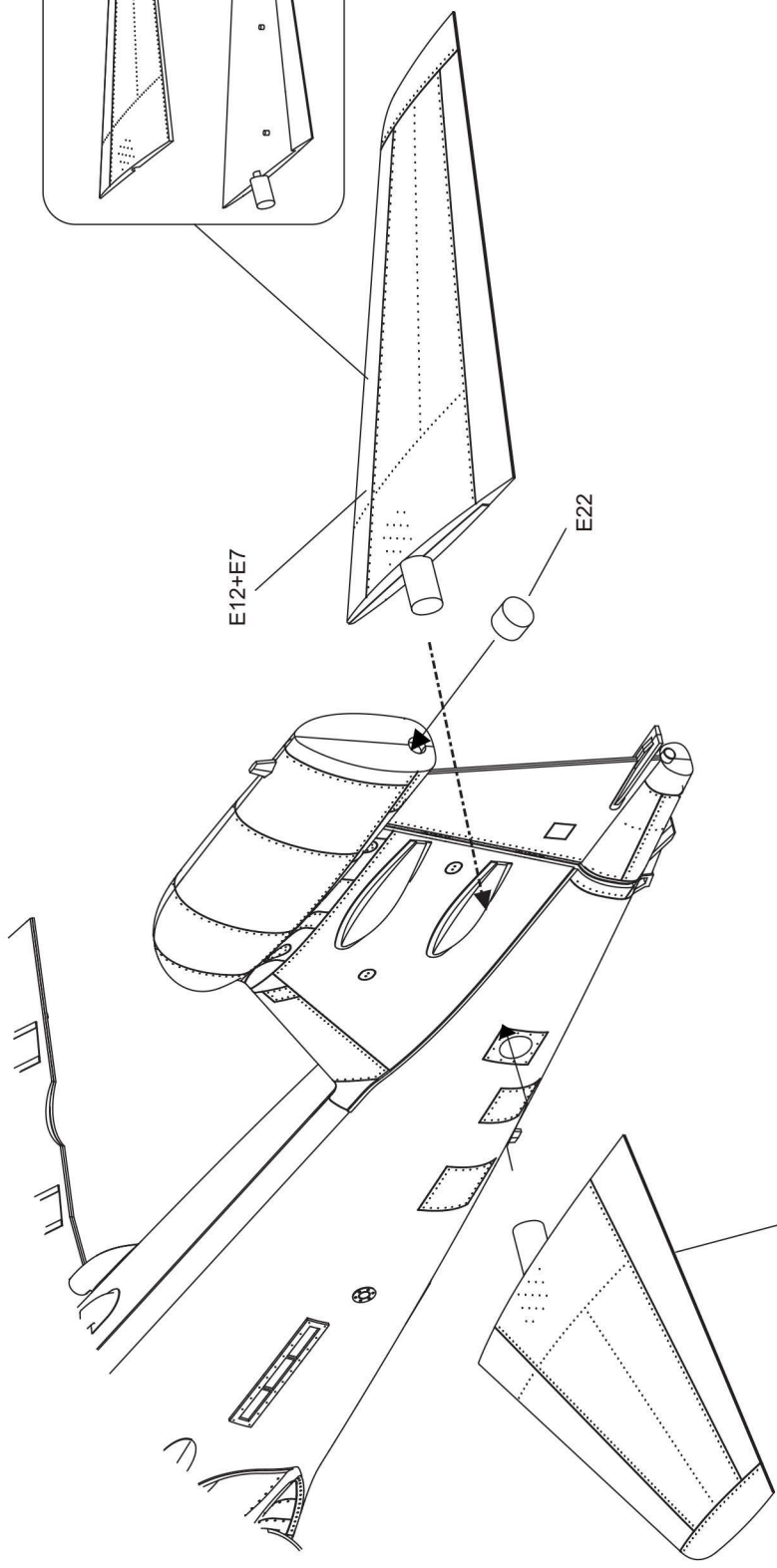
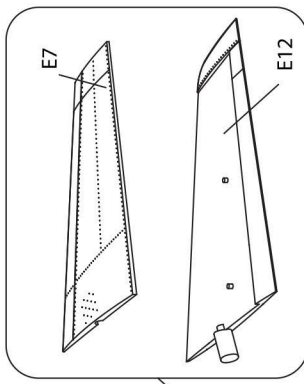


Do not install if wings are extended

Do not install if wings are extended

or





wings folded up

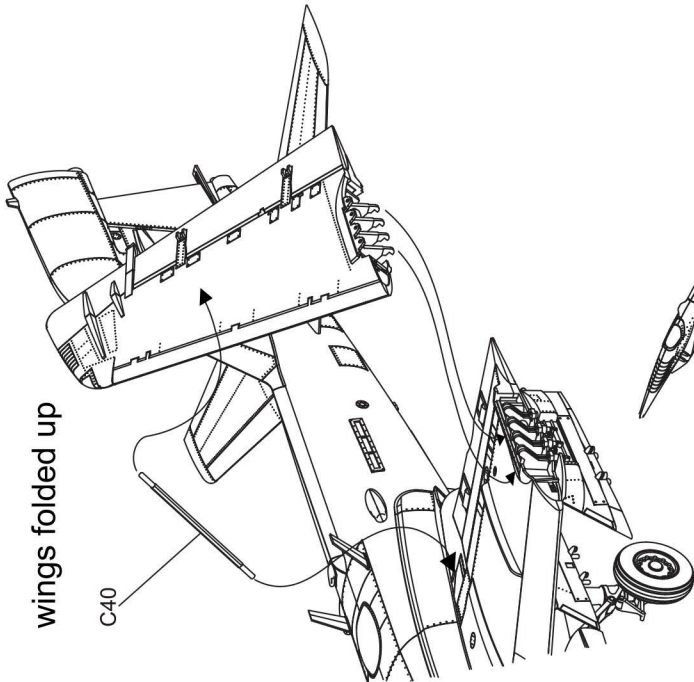
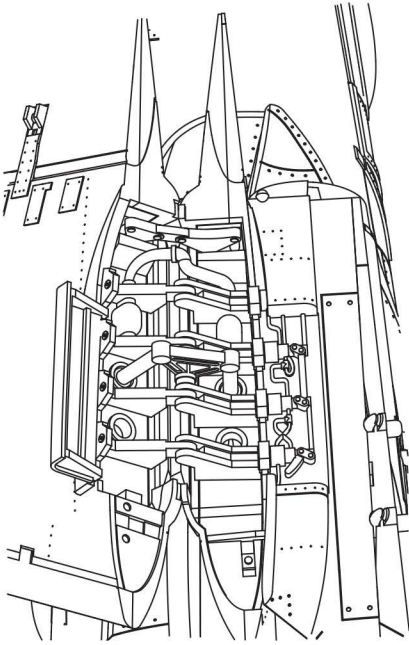
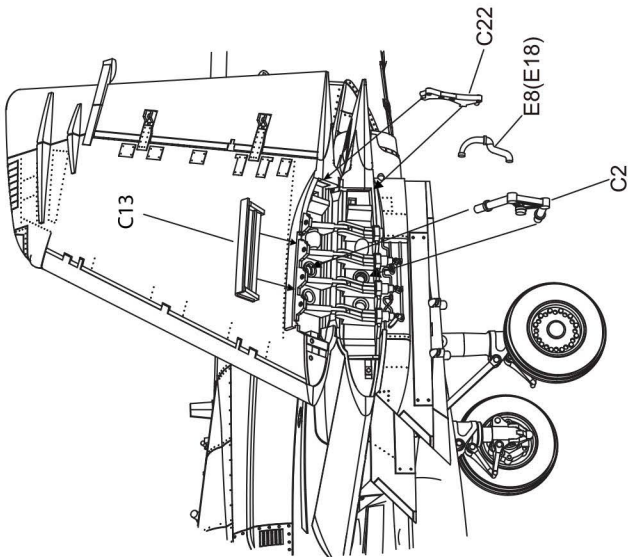
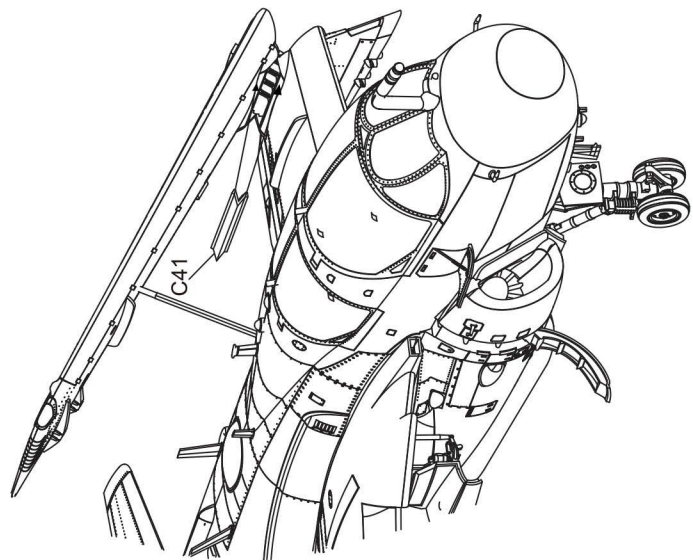
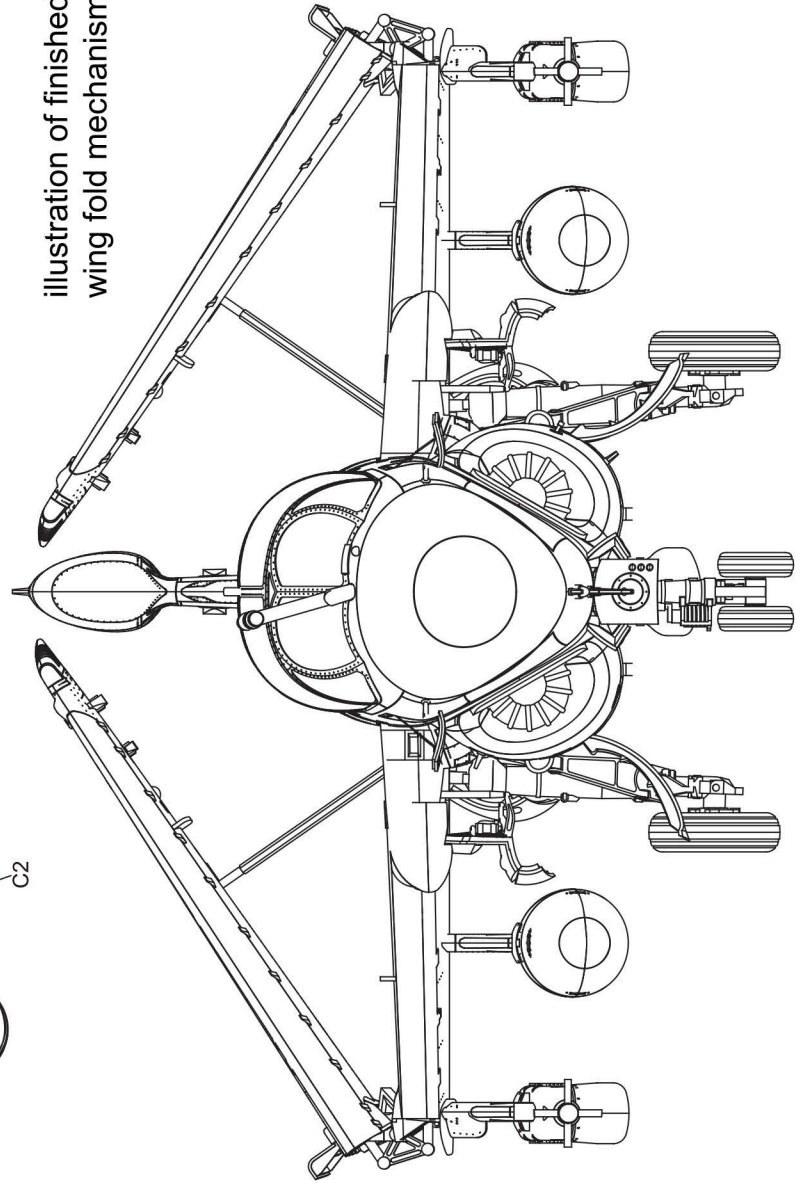
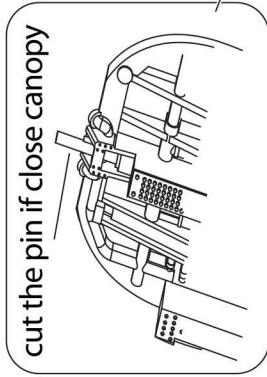
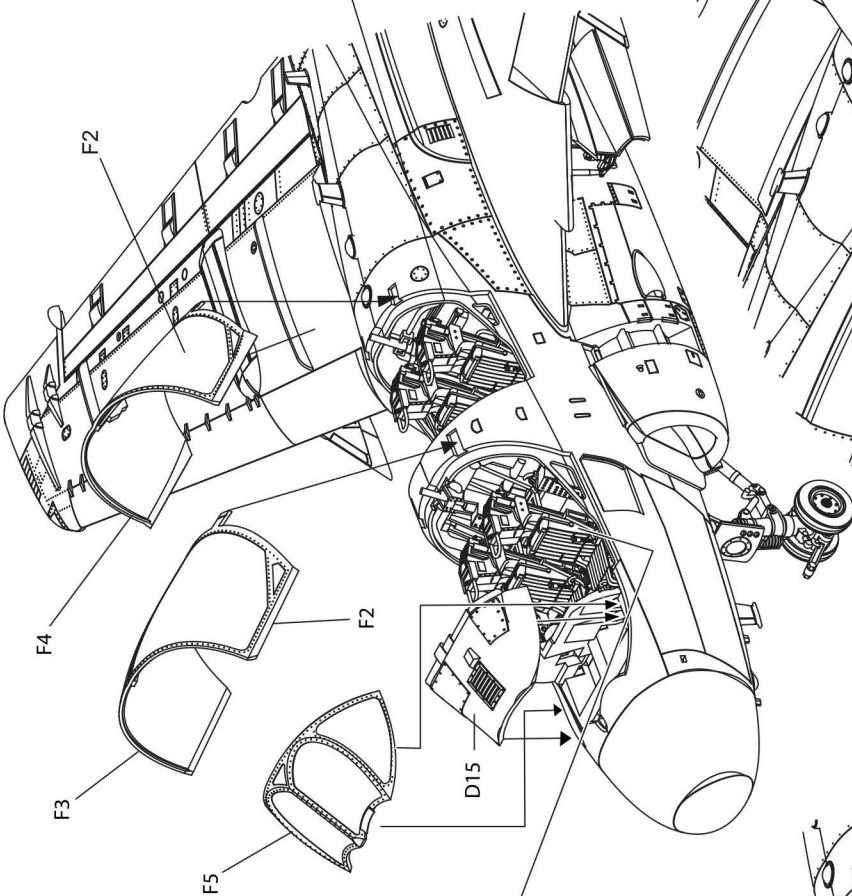
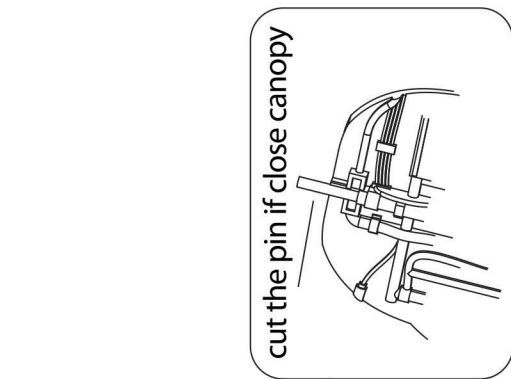
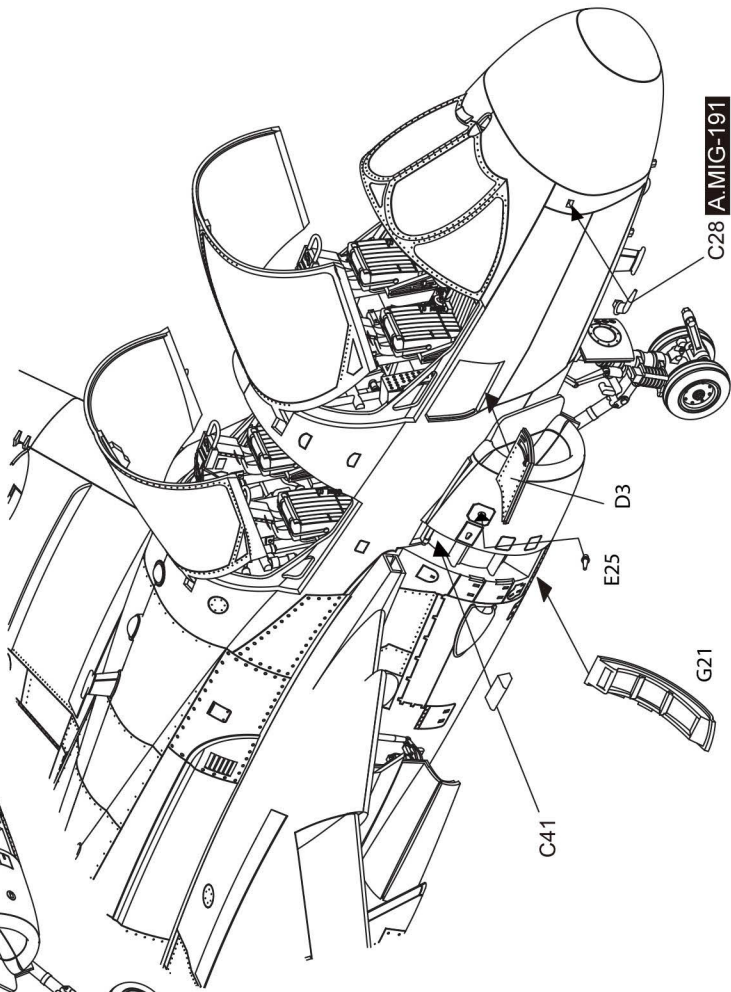
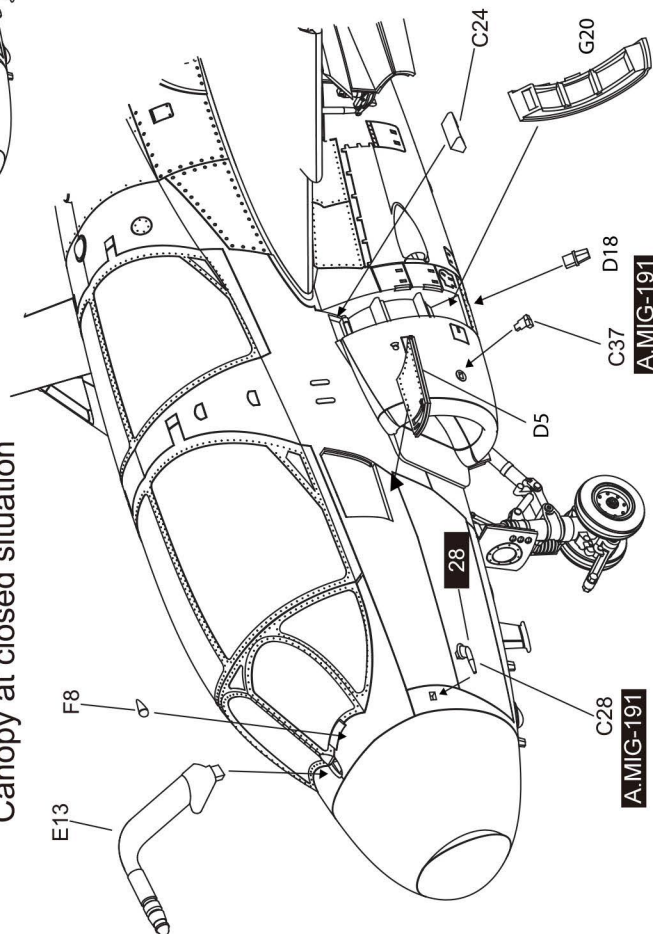


illustration of finished wing fold mechanism





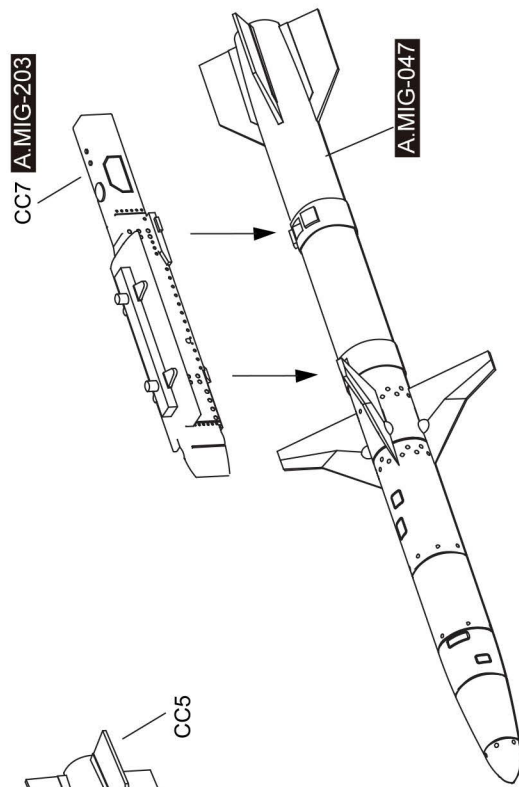
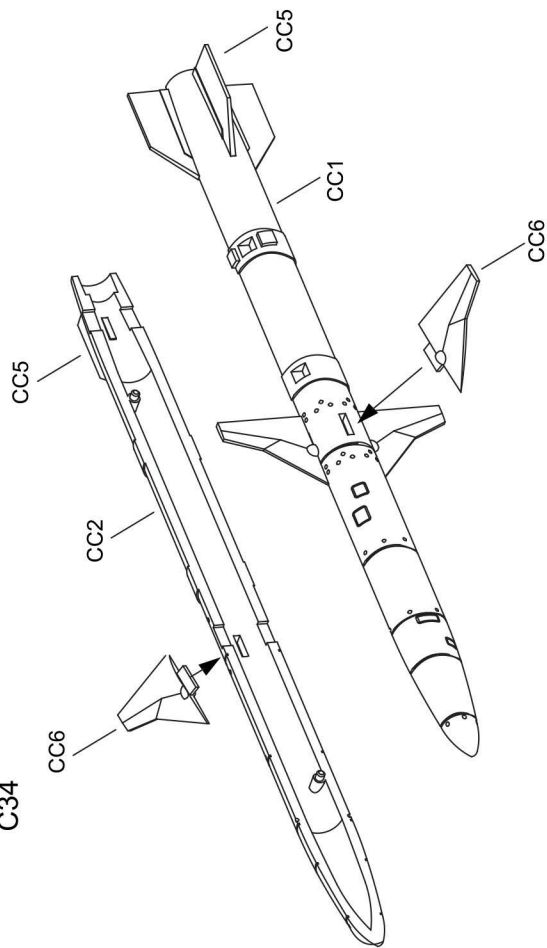
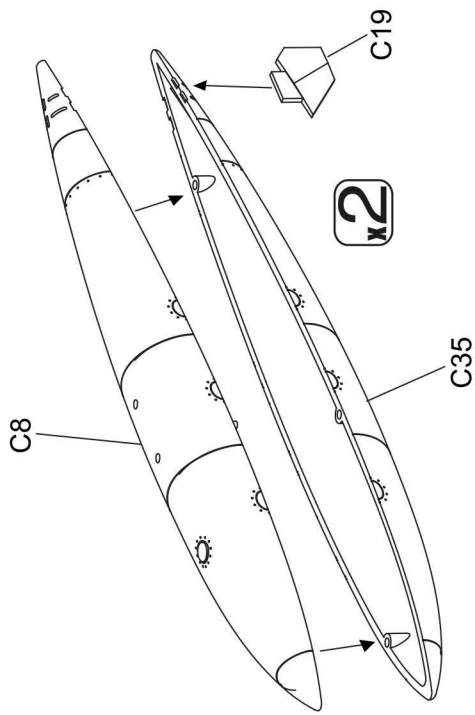
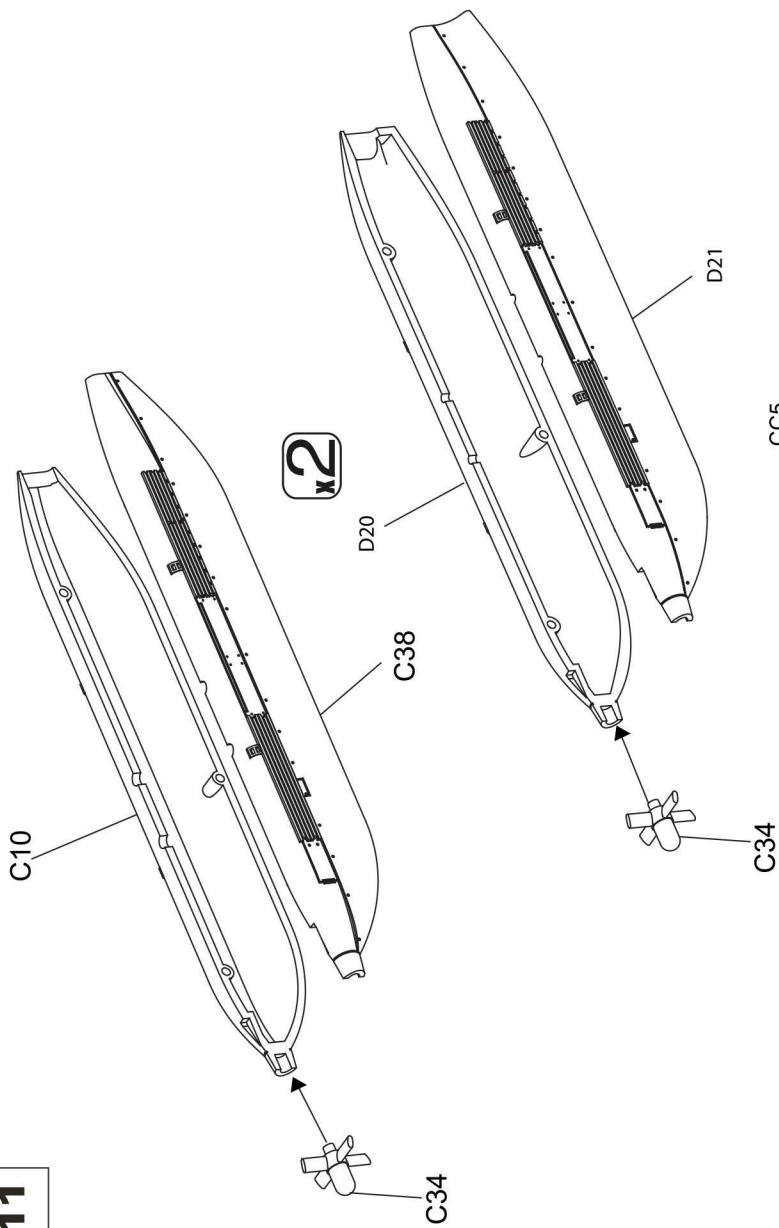
Canopy at closed situation

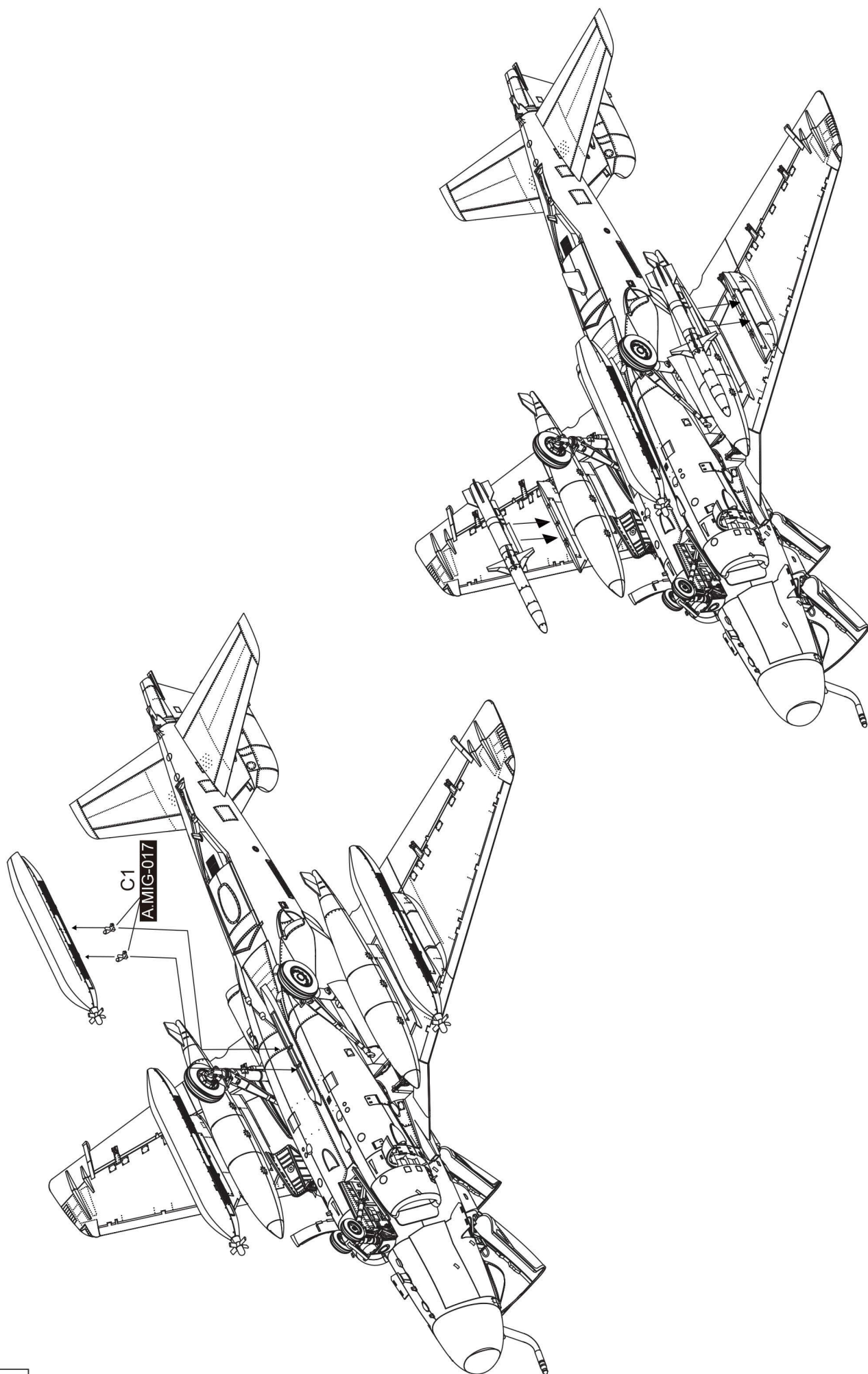


A.MIG-191

A.MIG-191

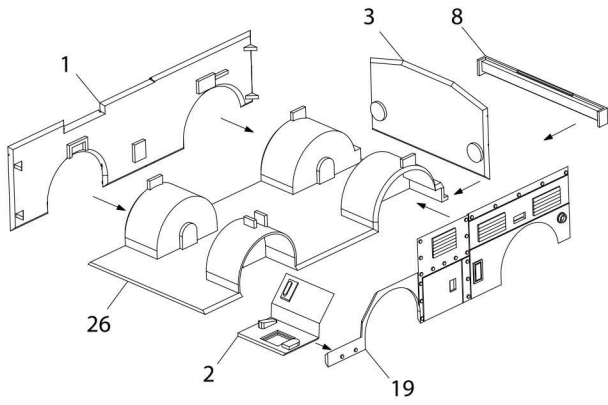
A.MIG-191



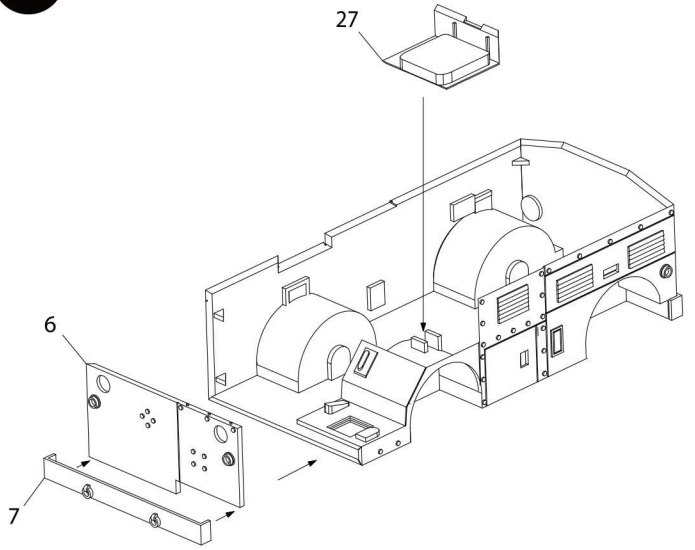


EA-6B usually carries single AGM-88 on either side. On the other side, a ECM pod is carried.

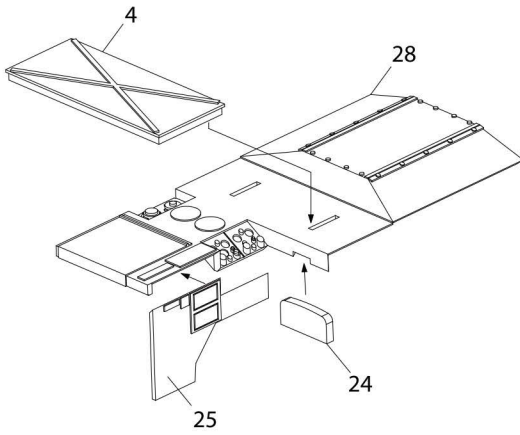
1 NC-02A MOBILE ELECTRIC POWER PLANT



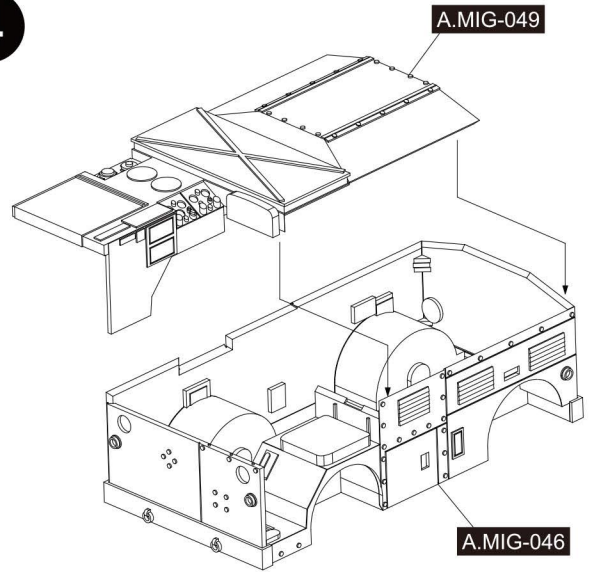
2



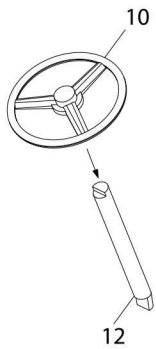
3



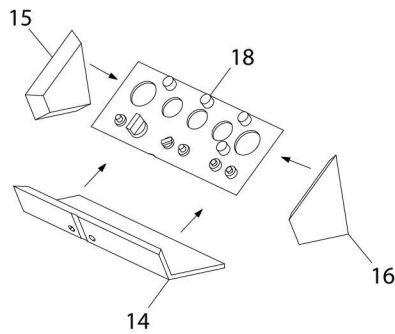
4



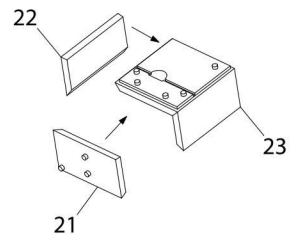
5



6



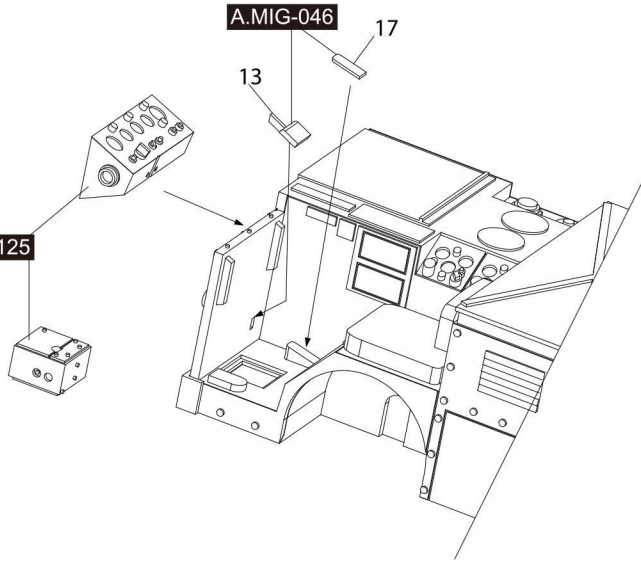
7



8

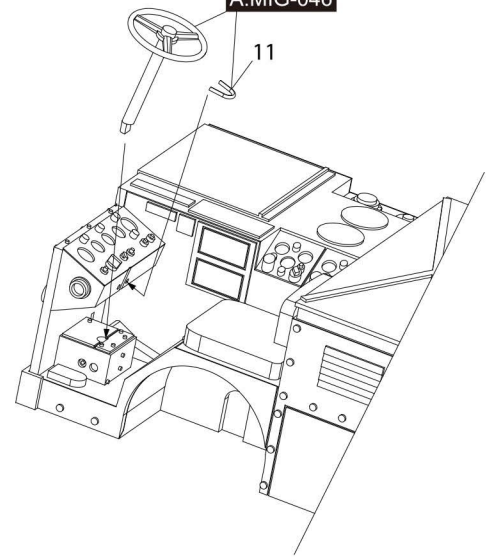
A.MIG-125

A.MIG-046

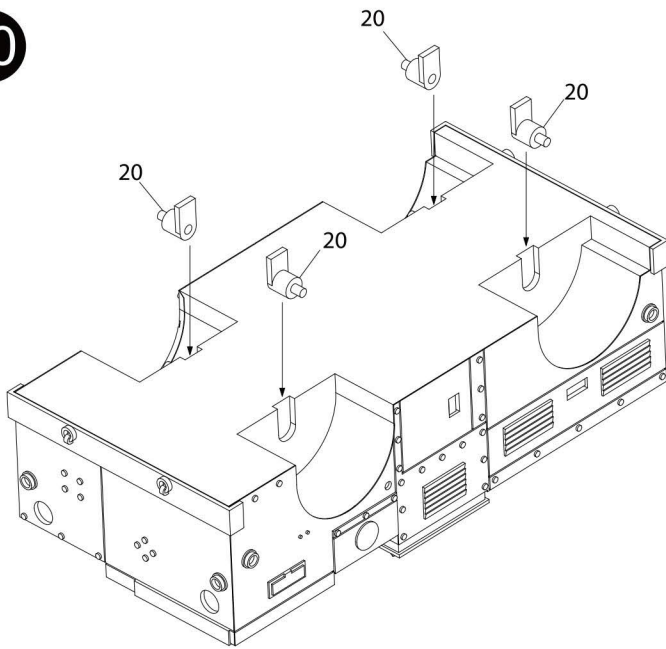


9

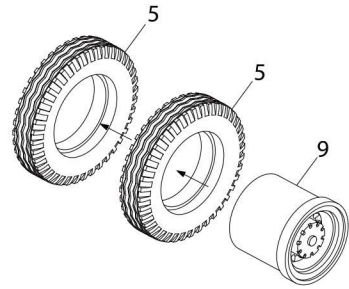
A.MIG-046



10



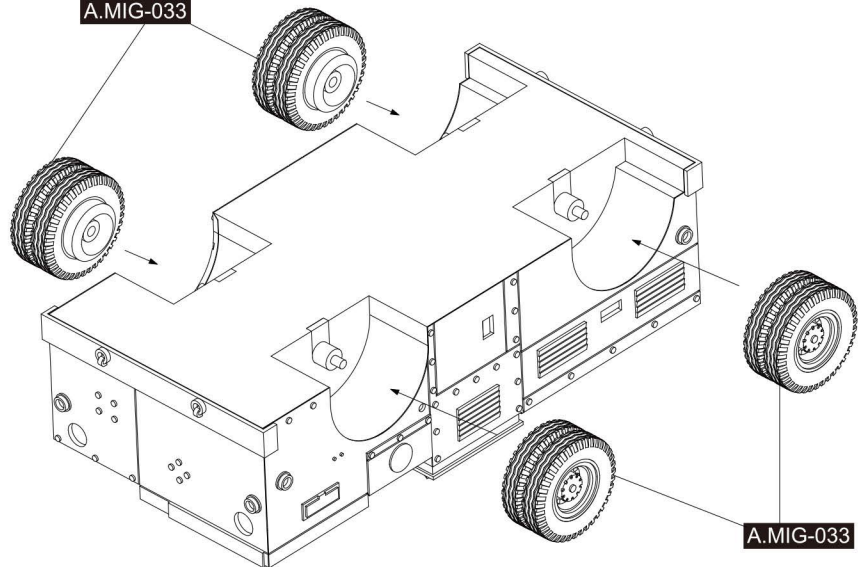
11



x4

12

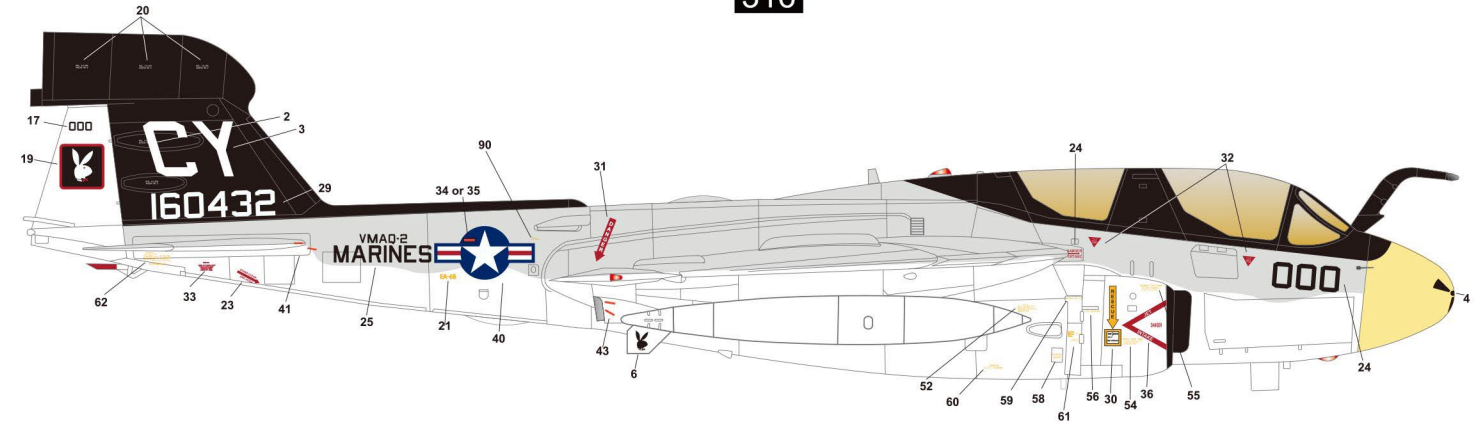
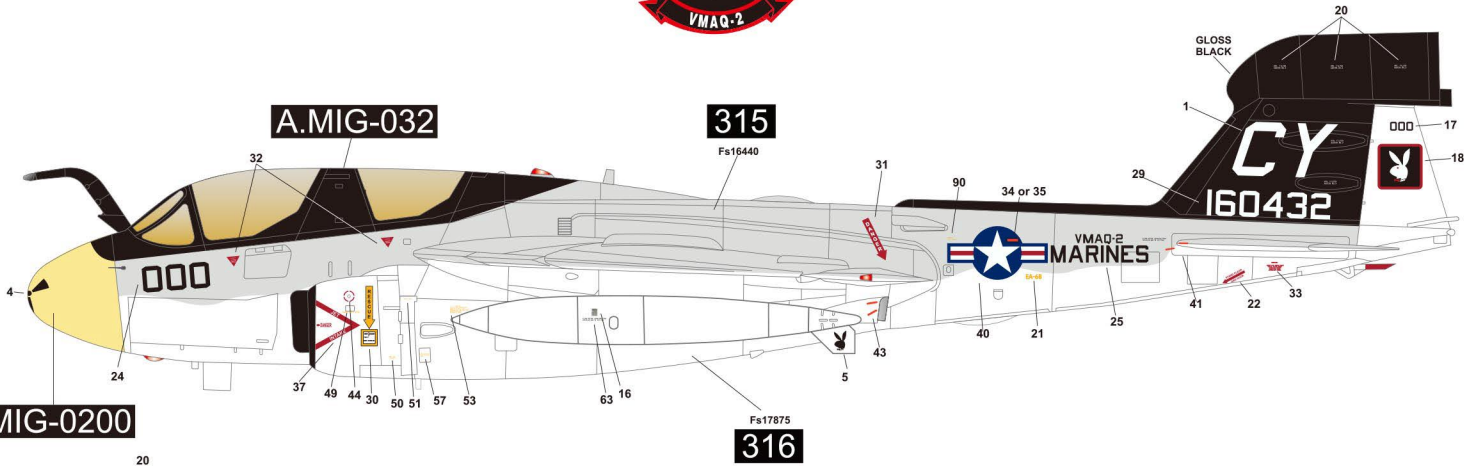
A.MIG-033



A.MIG-033

Kinetic EA-6B Prowler

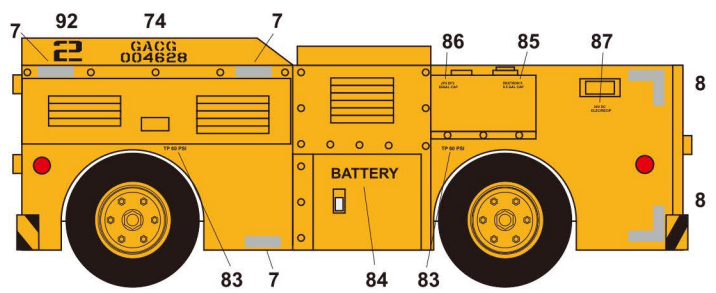
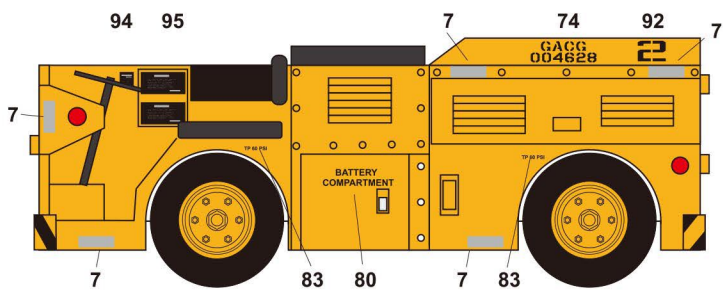
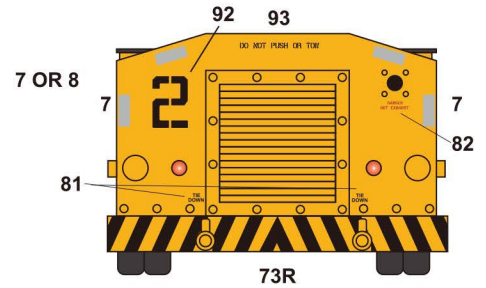
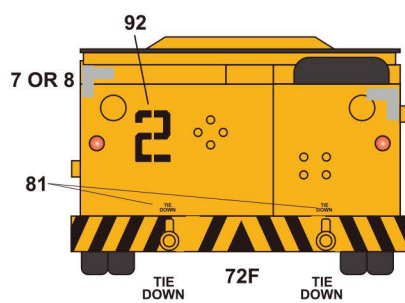
VMAQ-2 PLAYBOYS 1978



NC-2A EPU TRACTOR

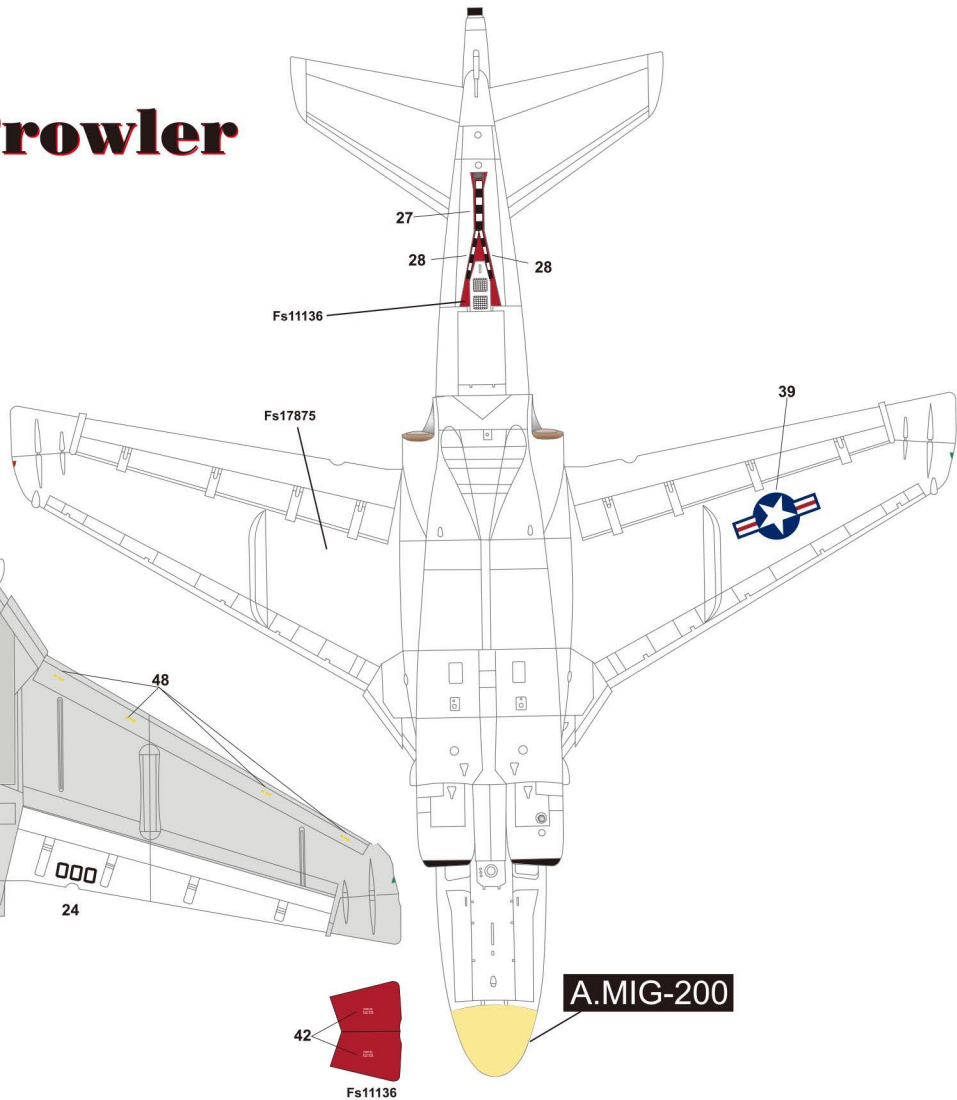
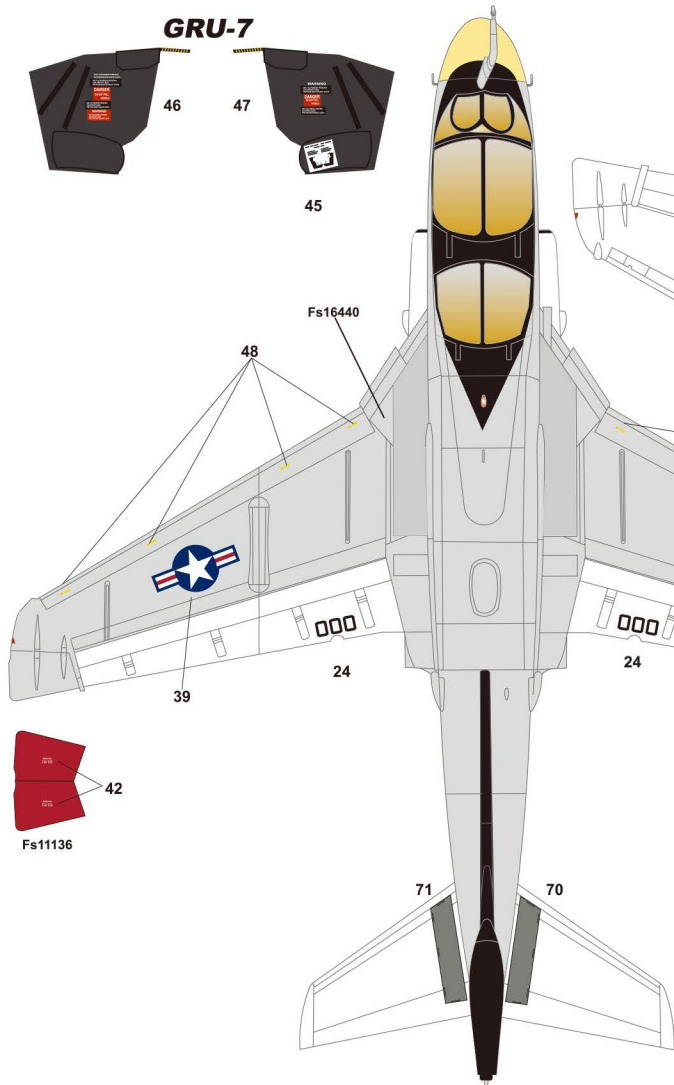


A.MIG-0125
Gold Yellow

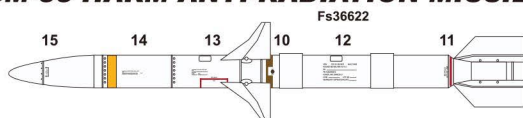


Kinetic EA-6B Prowler

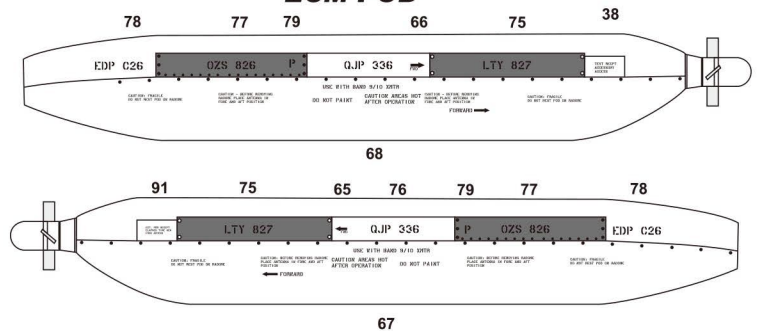
VMAQ-2 PLAYBOYS 1978



AGM-88 HARM ANTI-RADIATION MISSILE



ECM POD



LANDING GEAR

