



# FALCON

# Clear-Vax

## 1/72 SCALE CANOPY SET No.8 - R.A.F. BOMBERS WORLD WAR II (PART ONE)

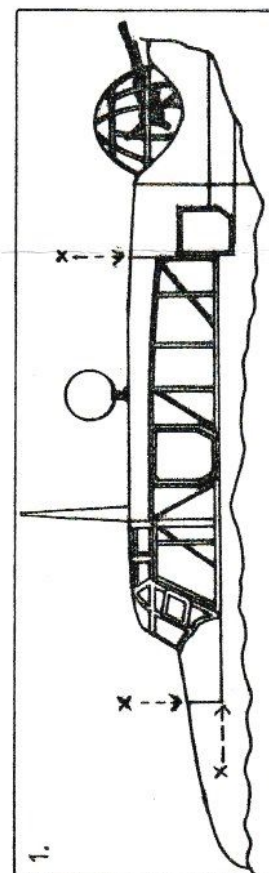
### USING REPLACEMENT CANOPIES

**TRIMMING:** Insert a new blade into your modelling knife or scalpel. To separate the canopy from its base, score very gently around the ledge moulded at the bottom. Do this very lightly at first, with minimum pressure. Repeat the process until the canopy pops away from the ledge. If you score too heavily at first you risk slipping and ruining the canopy. Finally, any rough edges can be cleaned up by lightly sanding with fine wet-and-dry paper.

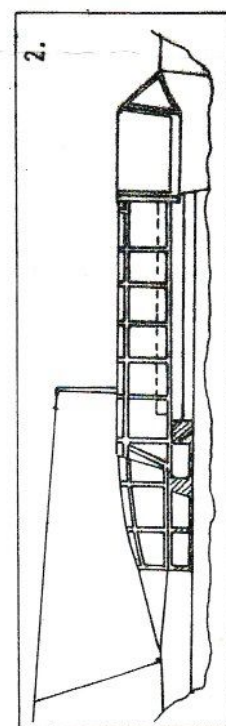
**GLUING:** Cyanoacrylate (superglue) can be used to fix the canopy to the kit and gives a fast setting permanent joint, but fumes given off when setting can cause frosting on clear parts. Where possible, mask around the joint with masking fluid or tape. PVA (white glue) is also useful as it is partly gap filling, doesn't attack the plastic and dries clear.

**PAINTING:** The best way to achieve crisp and convincing frame lines is by applying pre-painted strips of decal film. Paint part of a sheet of clear decal film, then cut strips of the correct width with a sharp blade and a straight-edge. Decal film sticks better to a painted surface than to bare plastic, so you will have to paint an undercoat on frame lines marked on the canopy.

**WHICH KIT?** Please note that where we suggest a certain kitset as suitable for our replacement canopy, the suggested kit is generally regarded as the most accurate model to the given scale. We can not guarantee that our canopy will fit other kits of the same subject.

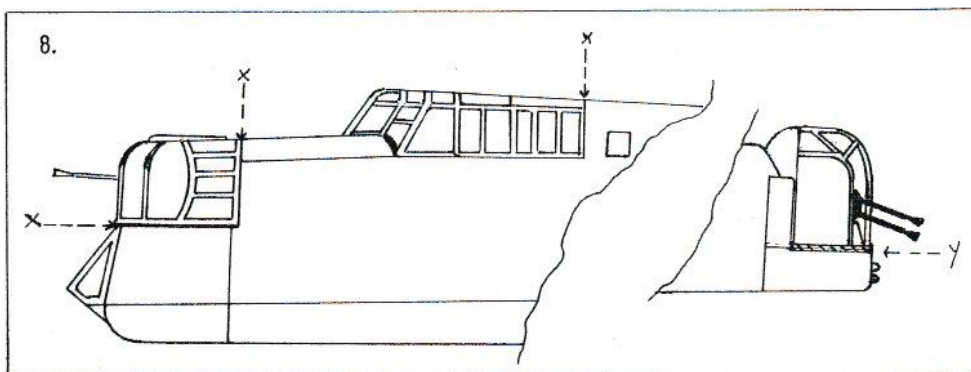
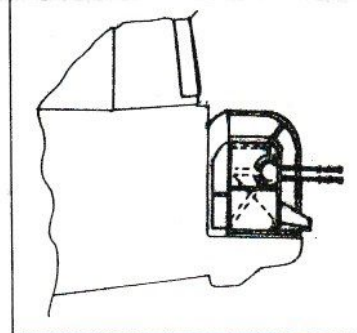
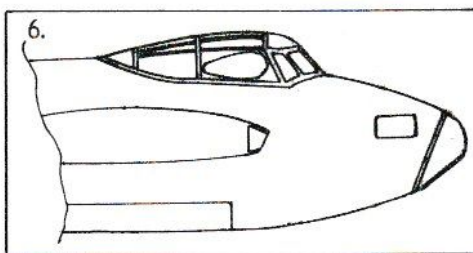
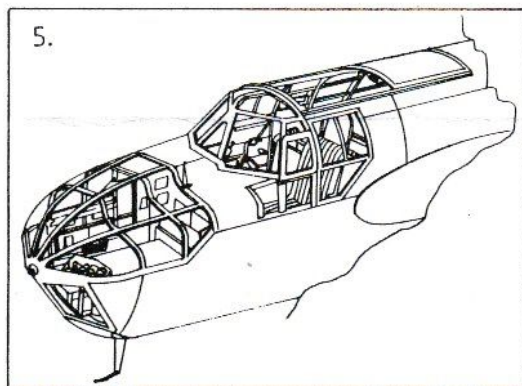
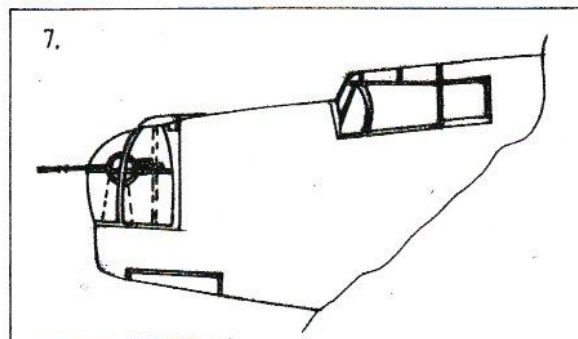
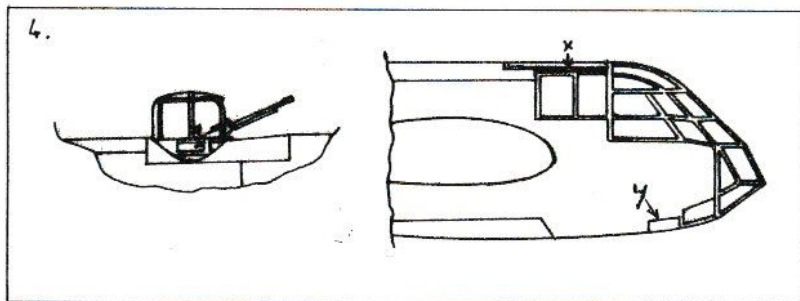
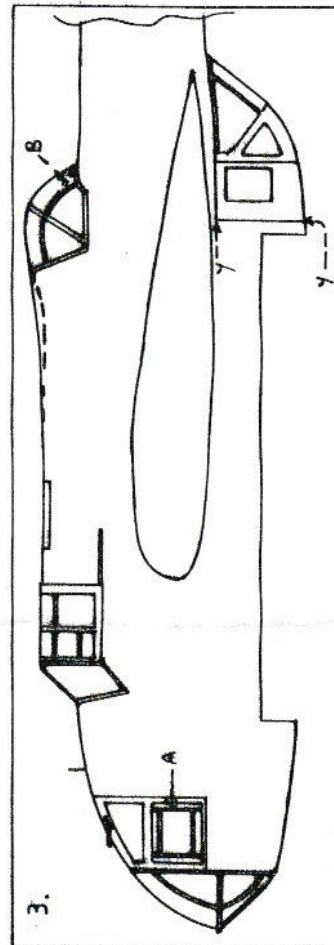


1. **Avro Anson:** Suggested kit - Airfix Anson I. Cut off the entire fuselage top at the lines marked X. The front of our replacement canopy includes an improved forward deck. The rearmost fuselage windows are not included for reasons of strength. We suggest fabricating these windows from the excess plastic around this canopy set. The dark lines indicate internal framing. The gun turret canopy simply fits onto the kit turret base. Suggested reference - Scale Aircraft Modelling, December 1987.
2. **Fairey Battle:** Suggested kit - Airfix Battle Mk I. In order to fit the replacement rear canopy, carefully cut away the shaded area on the kit fuselage. The rear of the pilots sliding section is designed to overlap the rear piece. References: Scale Aircraft Modelling, Oct 1986; Scale Models International, March 1984.
3. **Handley Page Hampden:** Suggested Kit - Airfix Hampden Mk I. Join the two piece nose canopy together before fitting to the fuselage. Note the nose MG and the extra framing marked A. This framing was not found on all aircraft. The dorsal turret had two styles of rear framing, curved or straight as marked B. The kit upper decking should be altered to match the dotted line. In order to fit the lower turret, carefully cut away the kit at the lines marked Y. References: Scale Models International, Sept 1986; Scale Aircraft Modelling, Feb 1987; Profile 58.
4. **Bristol Blenheim Mk I:** Suggested Kit - Frog Blenheim I/IF. Carefully cut the small projections marked X off the kit fuselage. This enables the entire clear-vax main canopy to fit neatly. An extra bomb aimers window marked Y needs to be cut from the starboard fuselage half. The semi retractable dorsal gun turret is supplied in the "up" position. The kit turret will need its top cut off at the appropriate point for replacement by the Clear-vax item. Be particularly careful when cutting out and handling the turret piece as it is very thin and easily damaged.





5. Bristol Blenheim Mk IV: Suggested Kit - Airfix Blenheim IV. The drawing shows the pilots upper hatch open. Assembly follows similar lines to the Blenheim I. Note that our main canopy represents the early style canopy. The later canopy with side blisters and chin turret will be featured on a future canopy set. References: Squadron Signal No.88; Profile 93 (Blenheim I), Profile 218 (Blenheim IV).
6. De Havilland Mosquito: Suggested Kit - Matchbox B.IX. The main canopy represents that fitted to the BIV and BIX versions. Use the kit small nose windows. The dark lines on the main canopy show the position of the internal framing. References: Profile 209 - Mosquito Mk IV, MAP Plan Pack - DH 98 Mosquito Mks II, IV & VI.
7. Vickers Wellington Mk X: Suggested Kit - Matchbox Wellington Mk X/XIV. Be extremely careful when cutting out and handling the nose turret as it is very thin. It is not necessary to cut out the gun traverse slots, just drill holes in the desired position for the gun barrels. In order to make the turrets swivel, cut away the kit turret bases and fit to them the Clearvax uppers. Care is also needed when cutting out the rear gun turret, particularly around the gun traverse cut-outs. Use the kit side windows. References: Squadron/Signal in action No. 76; Scale Models International June 1984 & 1986.
8. Armstrong Whitworth Whitley: Suggested kit - Frog/Novo Whitley V. Using the drawing as a guide cut away the nose and upper fuselage decking at the lines marked X. It is not necessary to cut a slot for the nose MG, just drill a hole in order to fit the MG from the inside. The kit rear fuselage is far too narrow in plan views. Widen the fuselage with a wedge 3mm wide at the extreme rear end. Also cut away the shaded area marked Y. Considerable detail needs to be added to the inside of the turret. Careful study of photographs of FN 20 turrets (also used on the Lancaster, Wellington and Stirling) should help with detailing. References: Profile 153, Air Enthusiast No. 9 Feb - Mar 1979, Scale Models International - August 1986



Produced by  
**FALCON INDUSTRIES**  
 P.O. BOX 42-093  
 WELLINGTON  
 NEW ZEALAND

Falcon Industries is an  
 associate member of  
 I.P.M.S. New Zealand