

1/35 SCALE

二战德军斯柯达RSO
东线牵引车



EN

The German Army was almost totally unprepared for the climatic conditions found on the Russian Steppe after the 1941 invasion. For much of the year the land was covered in ice and snow, or the ground was churned to deep mud. To cope with these conditions the German Army requested new vehicles, and the Radschlepper Ost (Wheeled Tractor - East) was one of the designs submitted. It was a large wheeled tractor designed by Dr Ferdinand Porsche as the Type 175, pilot vehicles being ready by late 1942. Production was undertaken by Skoda in Czechoslovakia and an order was placed for 200 vehicles. The Radschlepper Ost used large diameter steel wheels, commonly used on farm tractors of the period, which reduced the speed to only 15 km/h. In service the performance did not meet expectations and the order was cut to just 100 vehicles. The RSO weighed 7 tonnes and was powered by a 90 bhp .Skoda 4 cylinder OHV engine. Road range was about 125 kilometers and a crew of three men was normally carried.

Story by Phil Greenwood

★★★

DE

Die Wehrmacht war vollkommen unvorbereitet auf die klimatischen Bedingungen in der Sowjetunion nach dem Einmarsch 1941. Die meiste Zeit des Jahres bedeckten entweder Eis und Schnee oder tiefer Schlamm das Land. Aufgrund dieser Wetterbedingungen verlangte man nach entsprechenden Fahrzeugen. Einer der vorgestellten Entwürfe war der Radschlepper Ost. Es war ein großer Rad Traktor, entwickelt von Dr. Ferdinand Porsche als Typ 175. Vorserienmodelle waren gegen Ende 1942 bereit. Die Herstellung wurde in die Hände von Skoda in die Tschechoslowakei gegeben. Der Erstauftrag bestand aus 200 Fahrzeugen. Diese hatten Stahlräder von großem Durchmesser, ähnlich den damaligen Maschinen in der Landwirtschaft. Dadurch reduzierte sich die Geschwindigkeit auf 15 km/h. Die Leistungen entsprachen nicht den Erwartungen, so wurde die Bestellung auf 100 Stück gekürzt. Der RSO wog 7 Tonnen und den Antrieb übernahm ein 90 PS Skoda OHV Vierzylinder. Die Reichweite auf der Strasse betrug 125 km. Im Normalfall waren drei Mann Besatzung an Bord.

© Translation Michael Knoblich ACADEMY EUROPE GmbH

★★★

CN

德国军队在1941年入侵俄国的时候并未详细考虑到气候的因素及完全无准备草原与冰封土地的情况。由于在行军的过程中，车辆轮胎翻起了多年被冰封的深层泥巴而引致路面的情况非常恶劣。为应付这种情况德国军队急切需求一种合适的新运输工具，这时Radschlepper Ost（东部-轮式的拖拉机）是被提交的其中的一个设计。它是费迪南德·保时捷博士设计的一台名为175型的大型拖拉机，该雏型车在1942年底被制造出来。生产安排是在捷克斯洛伐克的斯柯达(Skoda)车厂所承担，并且发出了200辆的订单。Radschlepper Ost使用大直径钢质轮子，平常该车当作为农用拖拉机使用时速度会被降低至每小时15公里。由于在使用期间表现不很理想，所以订单被大副削减至100辆。该RSO约重7吨，动力由一台有90 bhp的斯柯达 Skoda 4汽伐OHV引擎提供。行走范围约为125公里，乘员组通常是三个人。

★★★

CORRECT METHOD FOR APPLYING DECALS:

1. Clean model surface with wet cloth.
2. Cut out of decal sheet and dip them in cold water for 15 seconds.
3. Place it on proper position on model.
4. Slide off base paper leaving decals on model with wet finger tip.
5. Move decals to exact position, push out excess water under decal with soft cotton cloth.
6. When decals get dry then complete.

正确贴水贴纸的方法:

1. 将模型表面擦干净。
2. 将贴纸剪下泡入清水中约15秒。
3. 将泡湿之贴纸取出置于欲贴处旁。
4. 用指尖轻推贴纸表面使其滑出底纸。
5. 将贴纸调整至适当位置并轻擦拭水份。
6. 待其自然干燥后即完成。

READ BEFORE ASSEMBLING:

- ★ When you use glue or paint, do not use near open flame, and use in well ventilated room.
- ★ Keep plastic model glue and tools away from children.
- ★ Glue, paints and tools are not included in the kit.
- ★ Remove all injection pins careful using a modeling file.

组装前必读:

胶水或油漆勿接近火源, 并打开窗户保持空气流通。
 胶水、油漆及工具勿让小孩接触。
 胶水、油漆及工具不包含在模型内。
 小心用专业锉刀锉平所有多余胶料。

ICON INSTUCTION 图标说明:

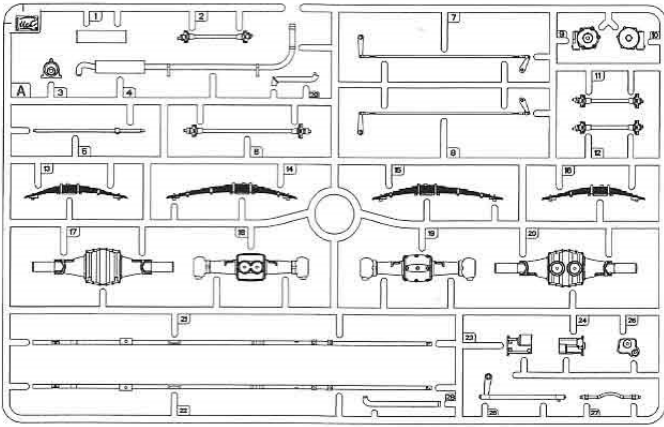
 Bend 弯曲	 Optional 选择采用	 Apply Decal 贴上水贴纸	 Weight 配重	 Open Hole 钻孔	 x2 2 Sets needed 同样的制作二组
 Remove 切除	 Attention 请注意	 Do not cement 不用粘合	 File/Sand 锉平	 Fill Hole 把孔填平	 Instant Glue For Metal 瞬间接着剂金属用

限中国大陆 Mainland China Orders Only Please!

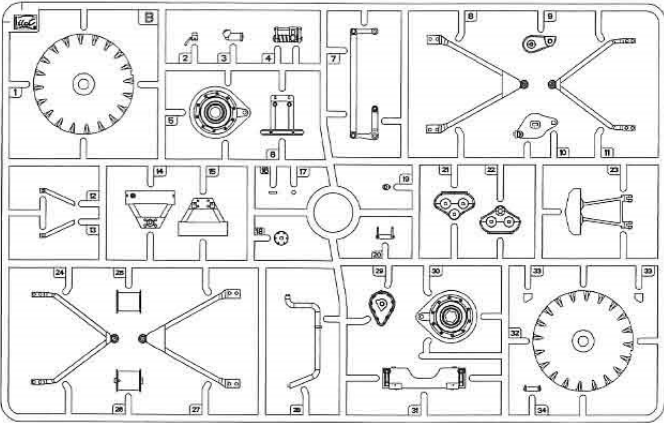
部品名称	数量	单价 (RMB)	总计	部品名称	数量	单价 (RMB)	总计
A版零件		16		T3版零件		15	
B版零件		16		T4版零件		15	
C版零件		20		Decal水贴		8	
D版零件		16		PE 蚀刻片		12	
E版零件		20		Chain 细链		5	
F版零件		15		Thread 棉绳		1	
G版零件		16		EMS 快递 — RMB 20			 RV 35005 零件补充申请表
H版零件		20		(请填) 总计 RMB _____			
J版零件		8		零件补充原因: (请于 <input type="checkbox"/> 打√) 原包装即 <input type="checkbox"/> 遗失或 <input type="checkbox"/> 毁损 制作途中 <input type="checkbox"/> 遗失或 <input type="checkbox"/> 毁损 其他原因 _____			申请人 姓名: _____ 电话: _____ 邮箱: _____ 地址: _____
K版零件		20					
M版零件		20					
T1版零件		15					
T2版零件		15					请依本表将金额寄于我司或 登陆公司网站与我们联系, 我们会尽快为您处理。



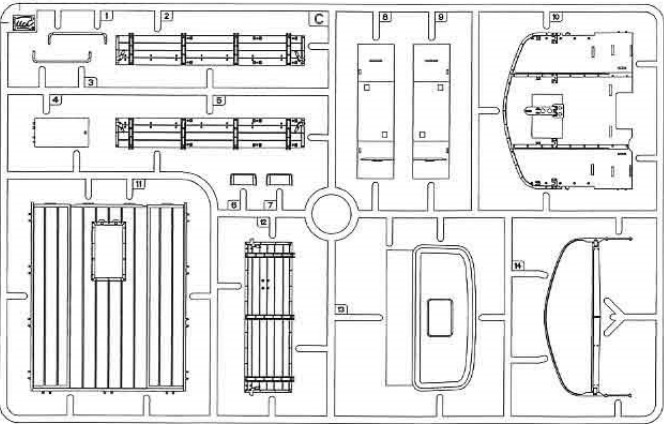
A x1



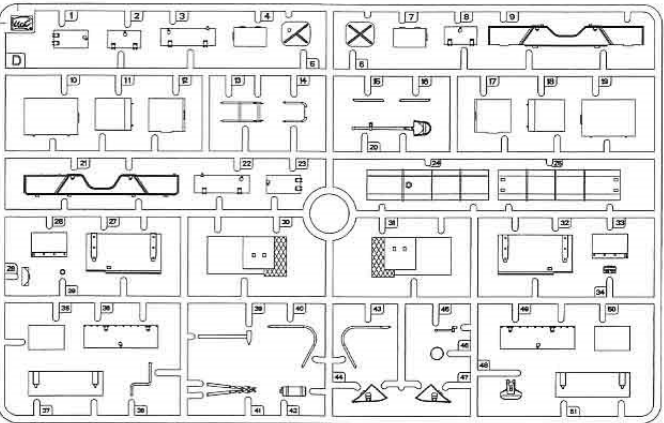
B x1



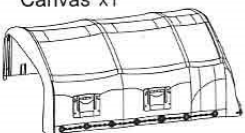
C x1



D x1



Canvas x1



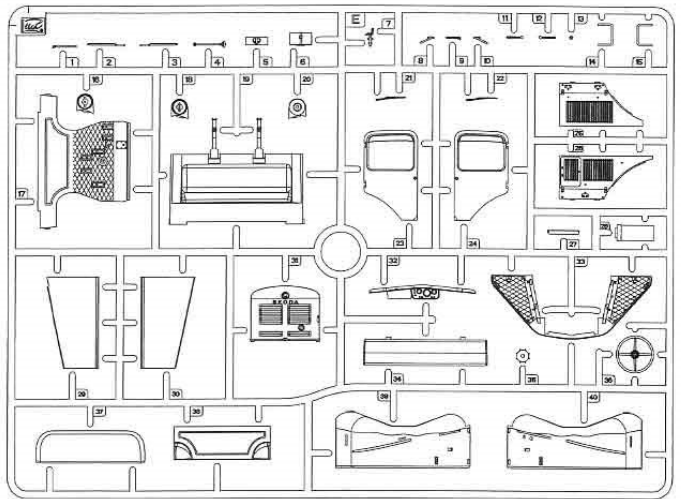
Thread
细绳



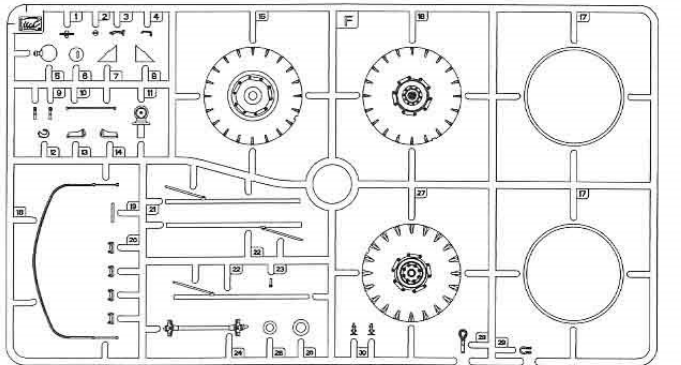
Chain
细链



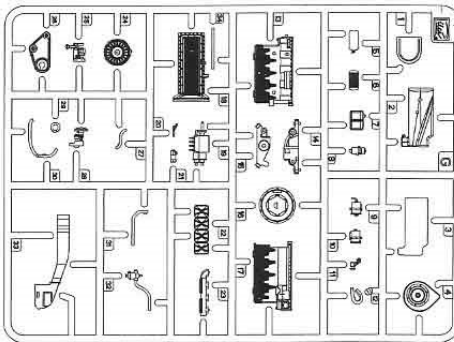
E x1



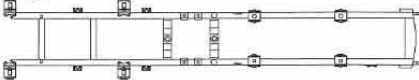
F x2



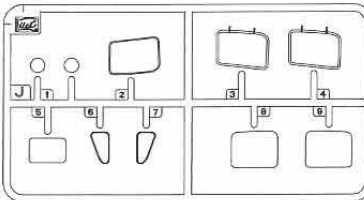
G x1



H x1



J x1



FL x1



FR x1



RL x1



RR x1



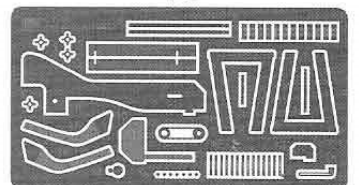
Cab x1



Decal

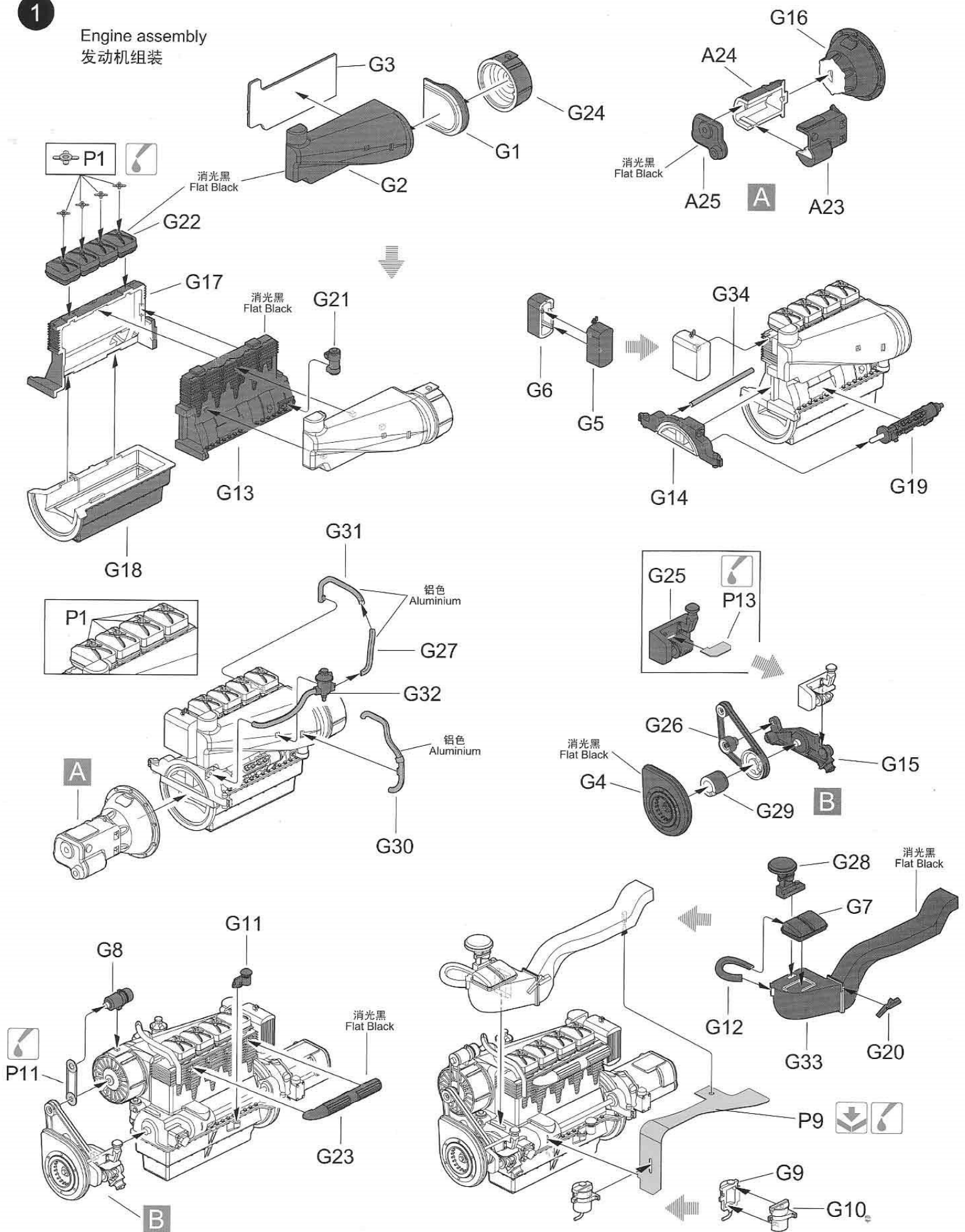


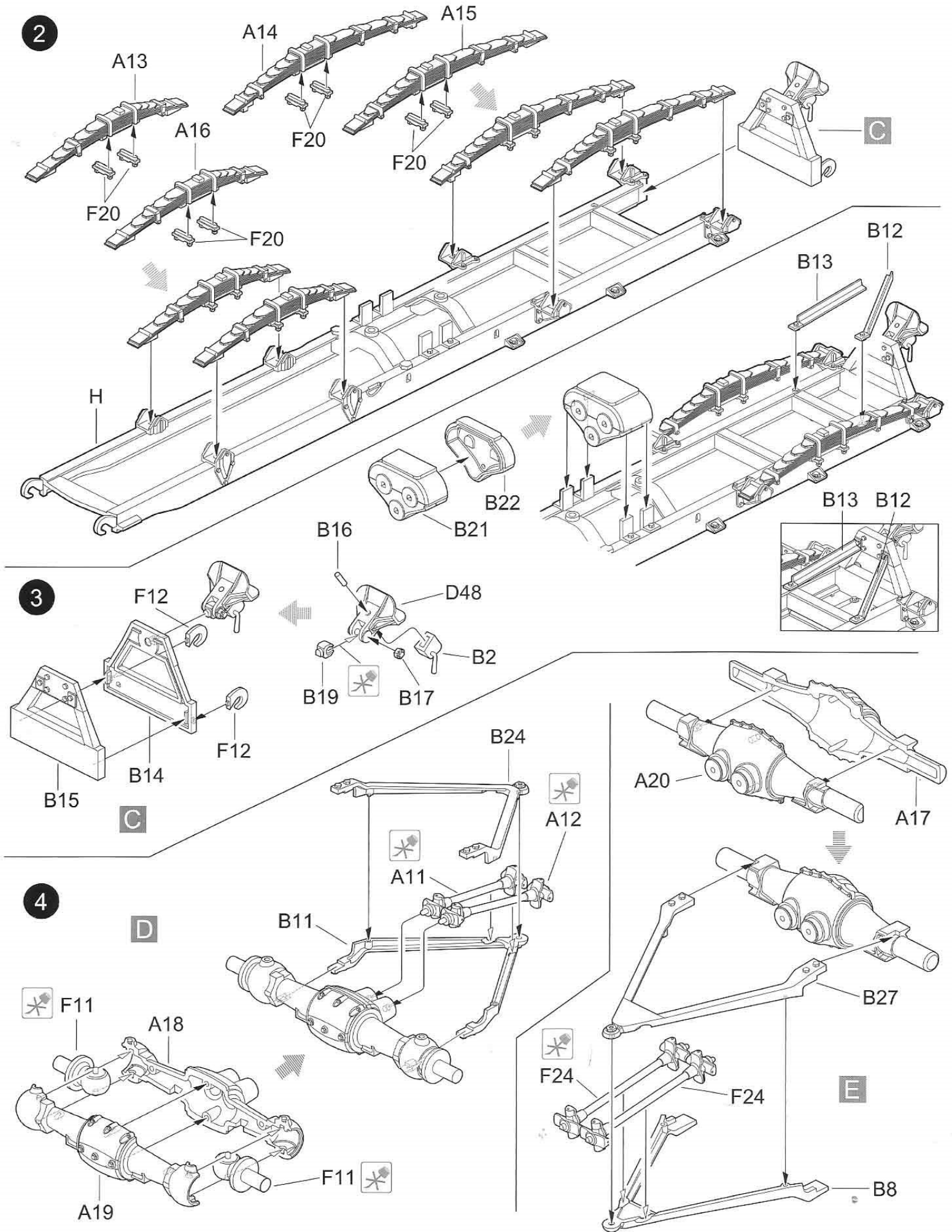
PE

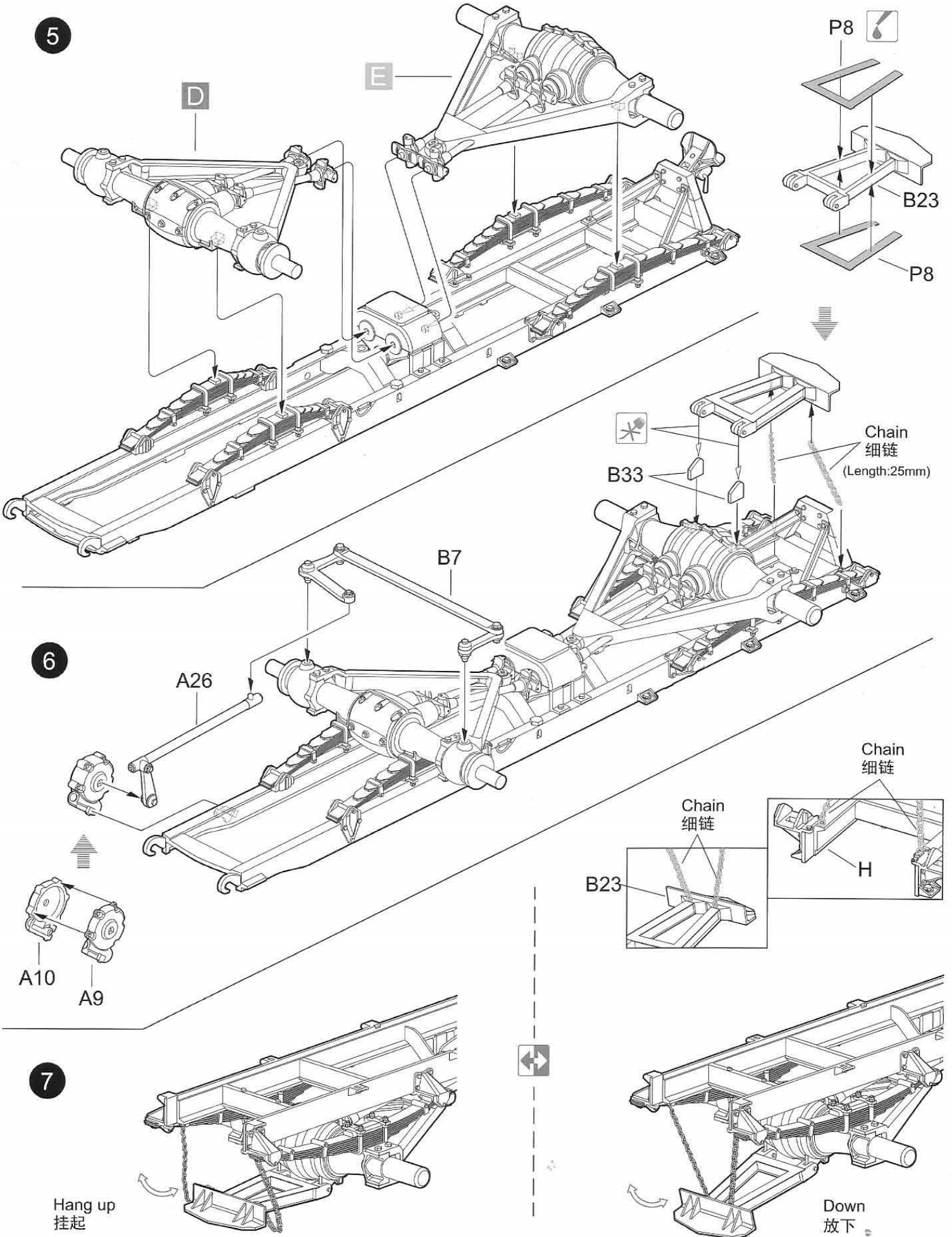


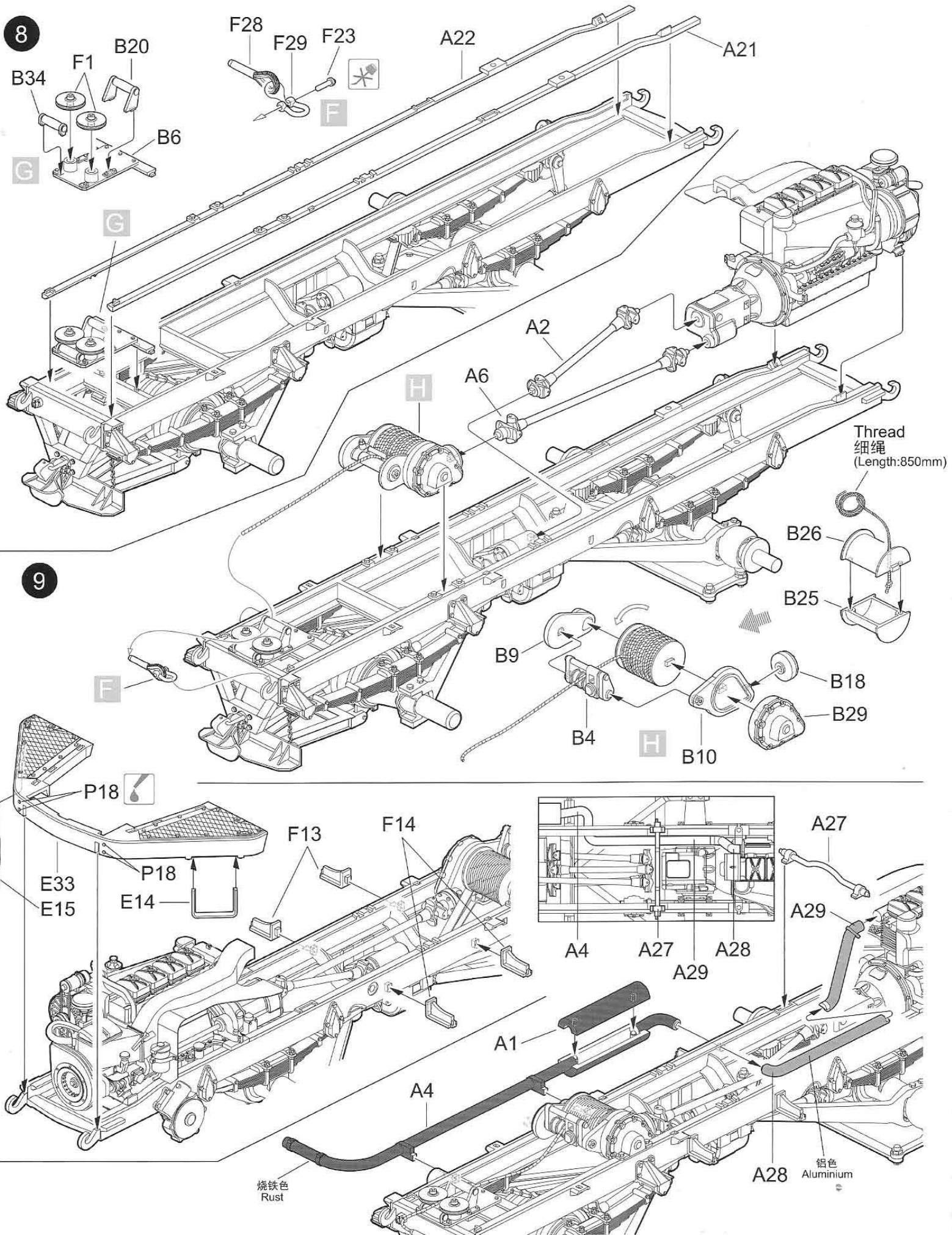
1

Engine assembly
发动机组装





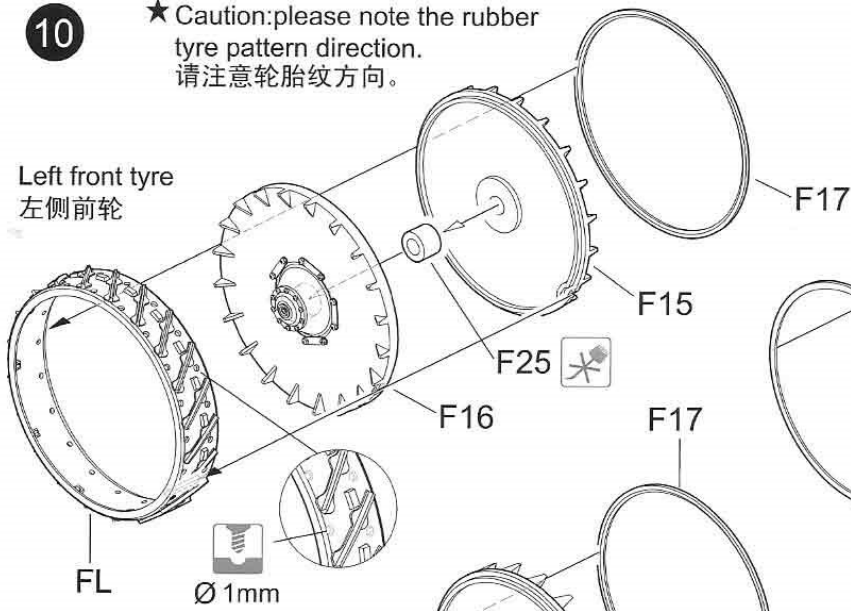




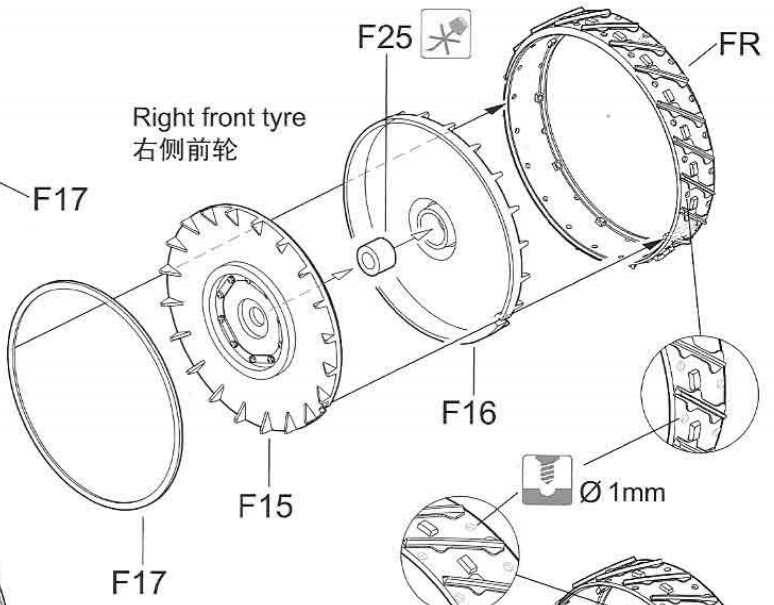
10

★ Caution: please note the rubber tyre pattern direction.
 请注意轮胎纹方向。

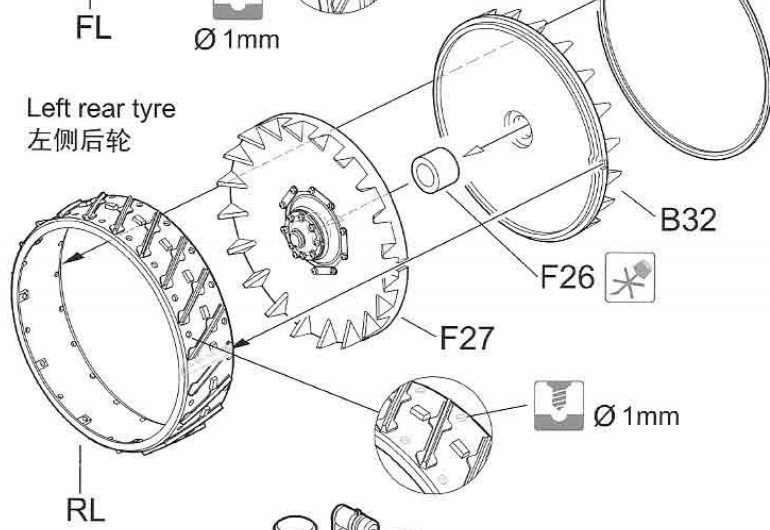
Left front tyre
 左侧前轮



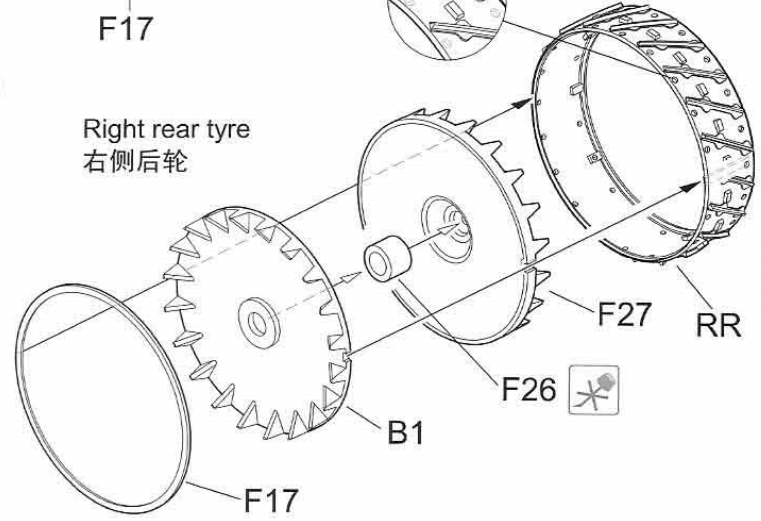
Right front tyre
 右侧前轮



Left rear tyre
 左侧后轮



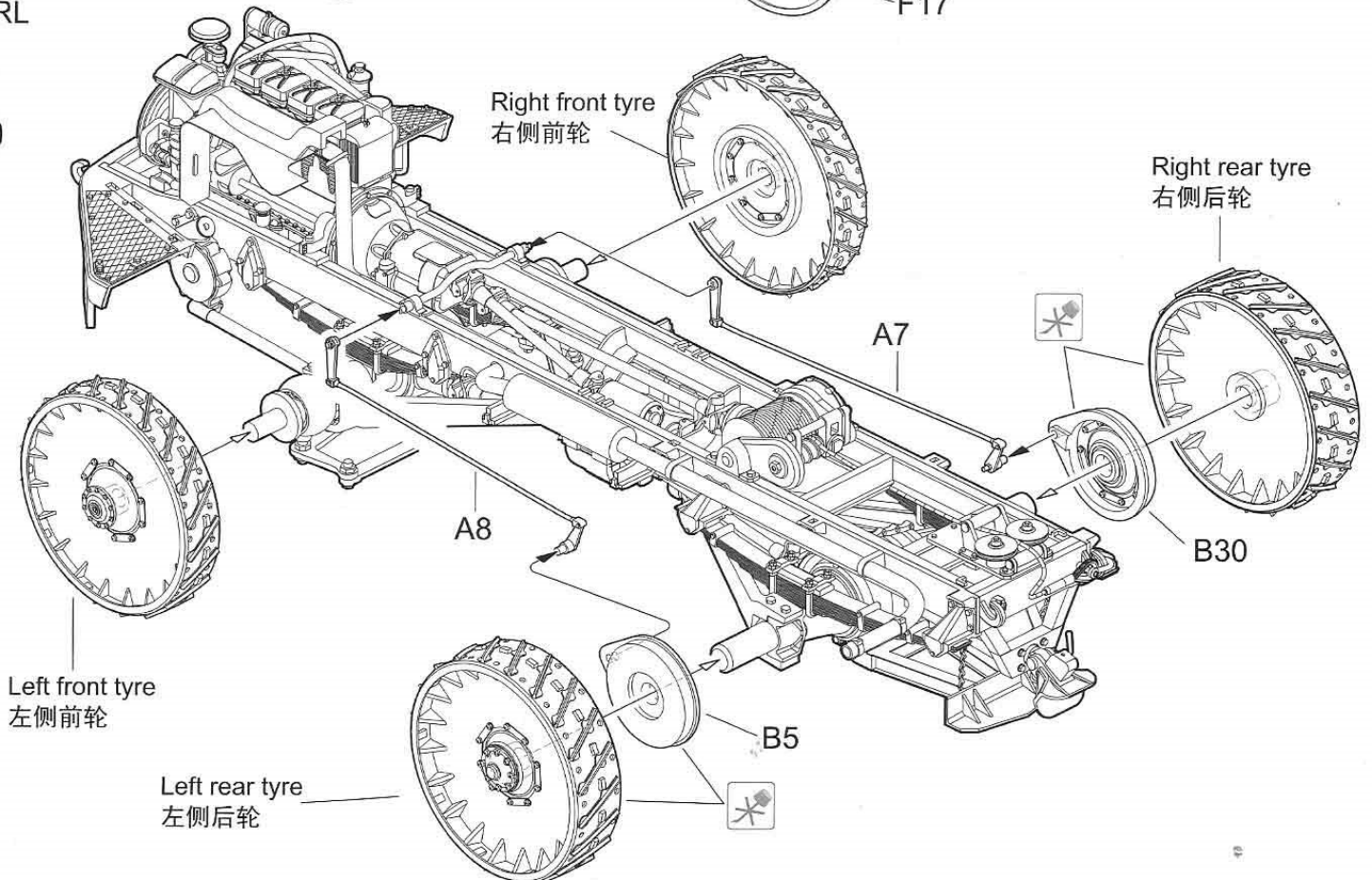
Right rear tyre
 右侧后轮



11

Right front tyre
 右侧前轮

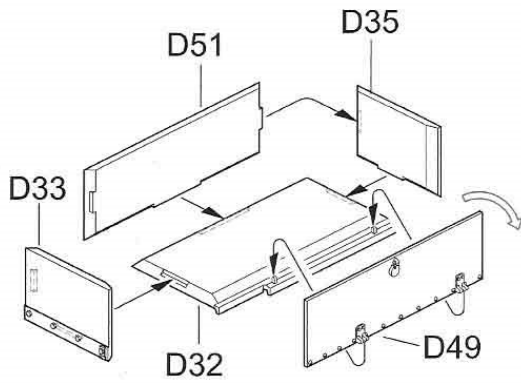
Right rear tyre
 右侧后轮



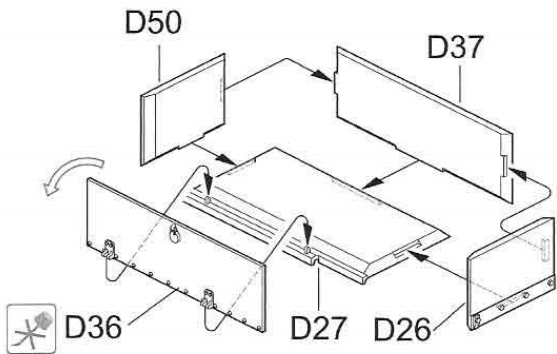
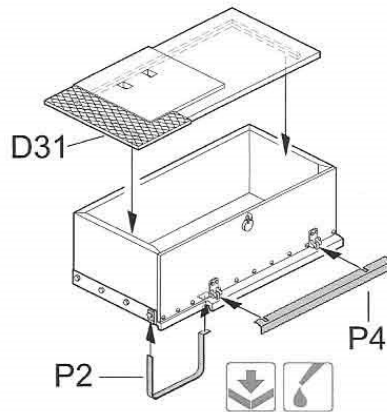
Left front tyre
 左侧前轮

Left rear tyre
 左侧后轮

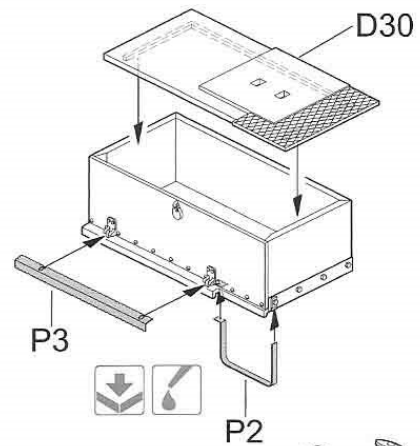
12



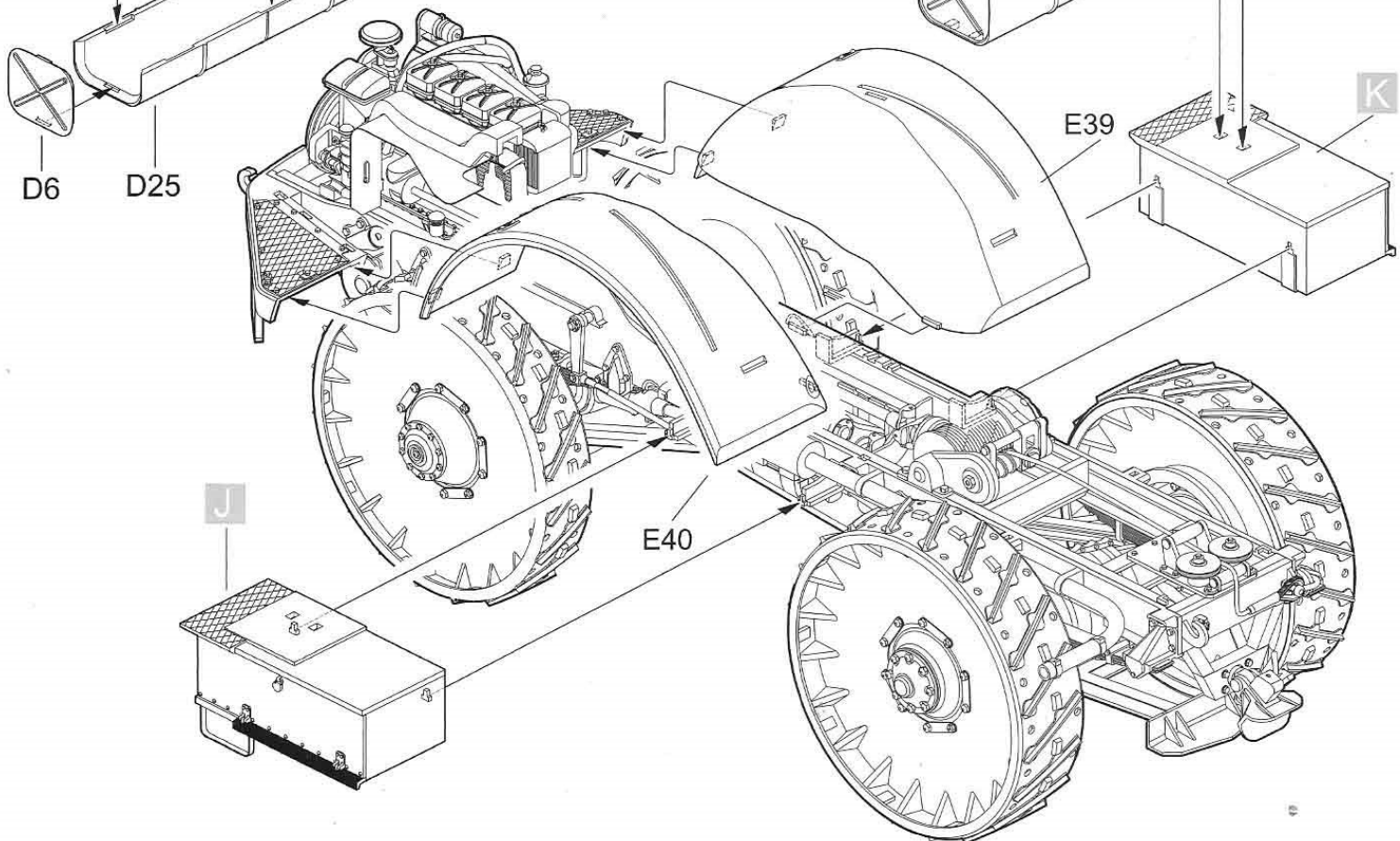
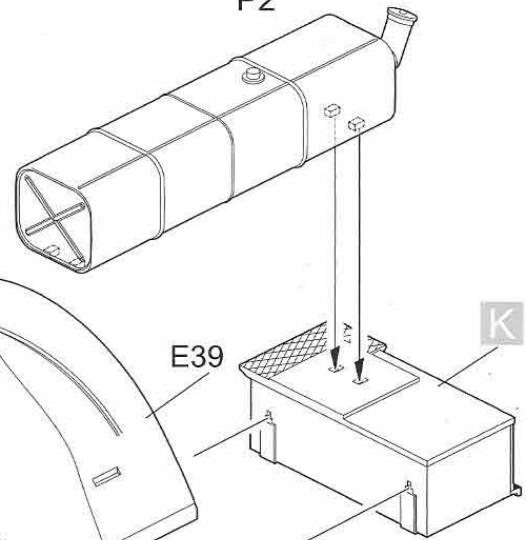
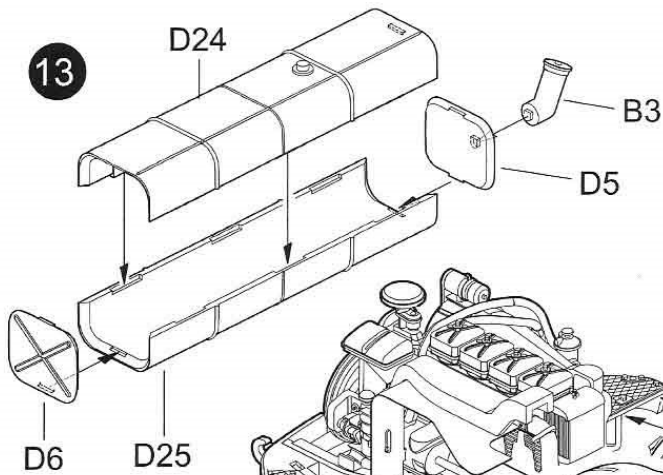
J

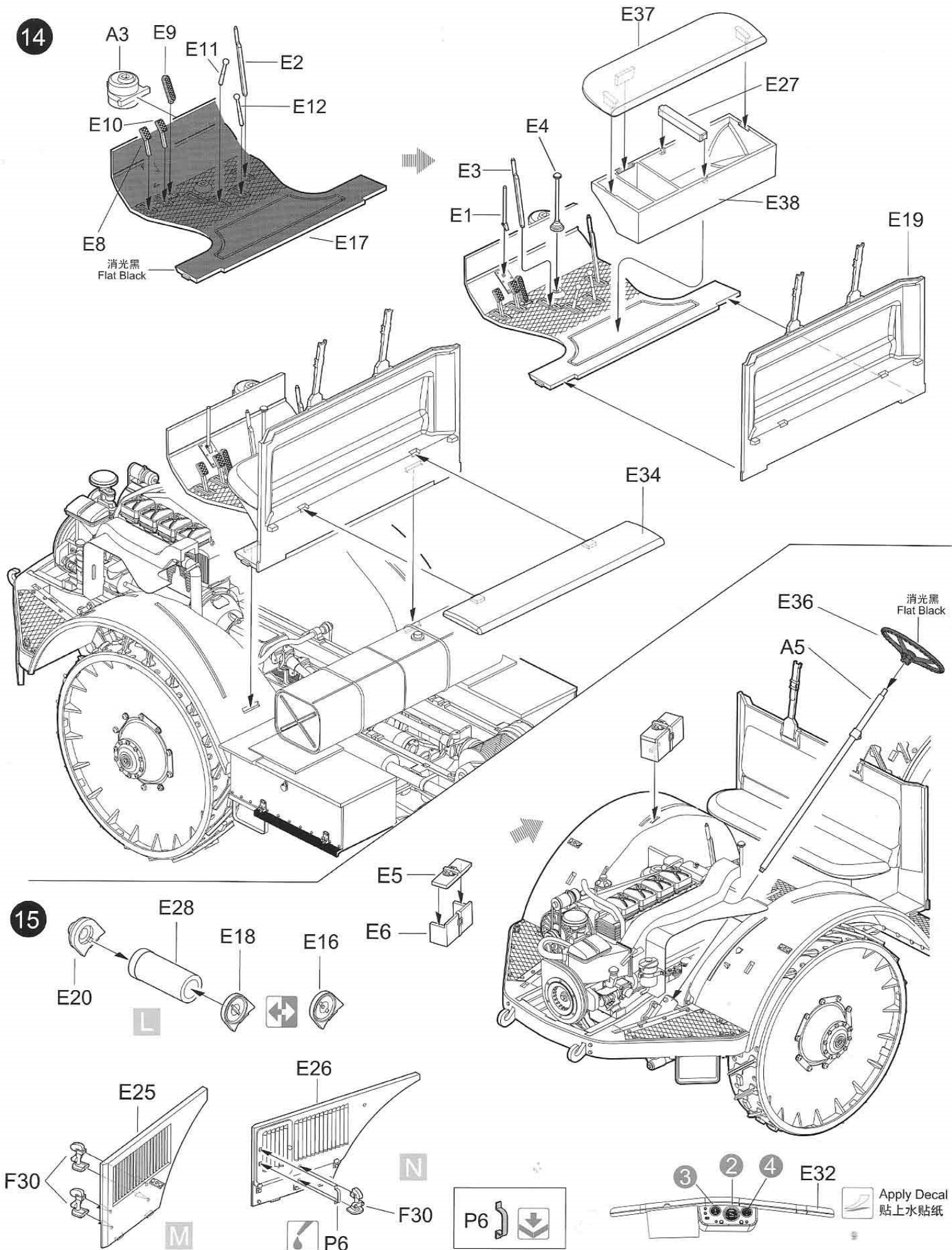


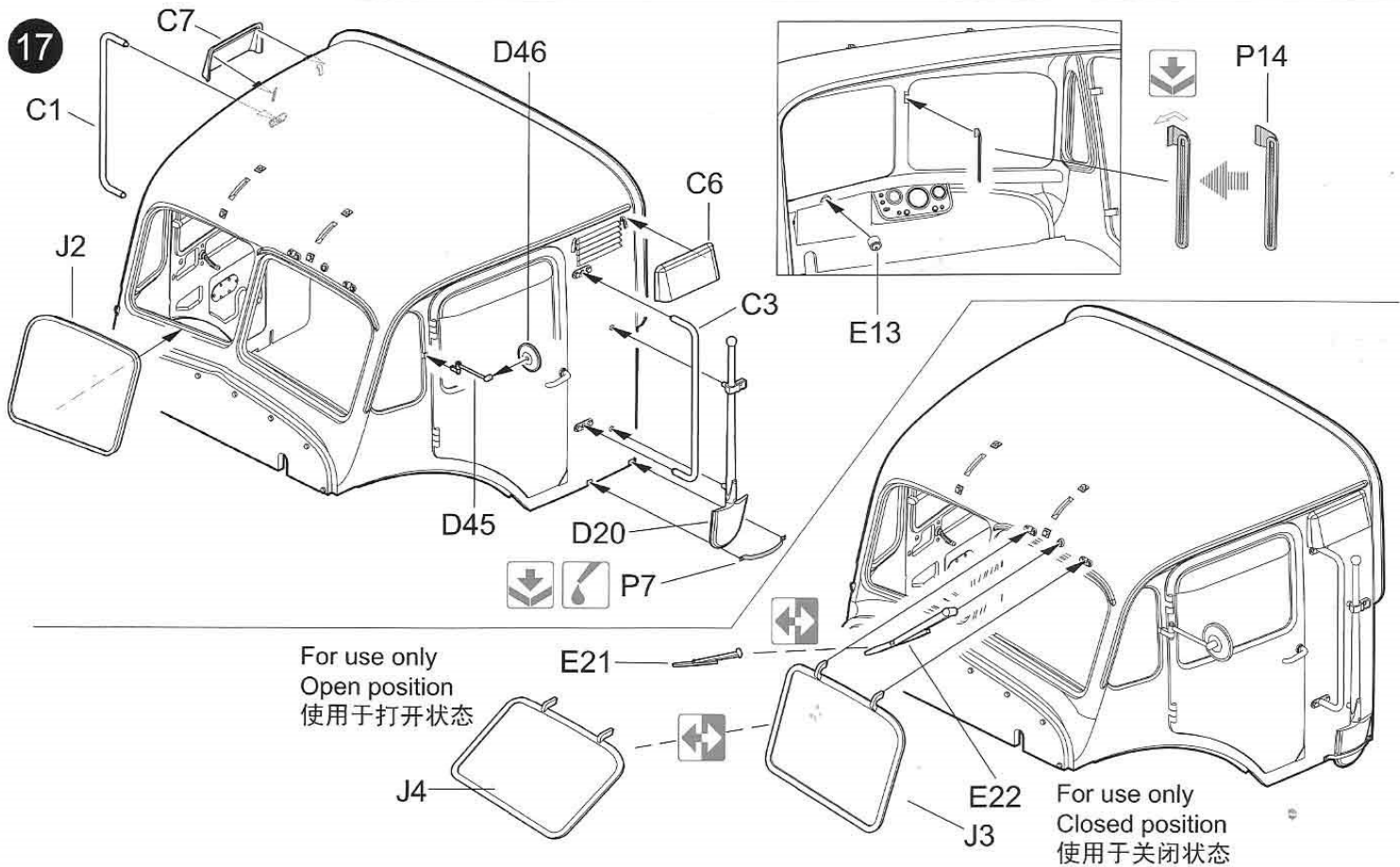
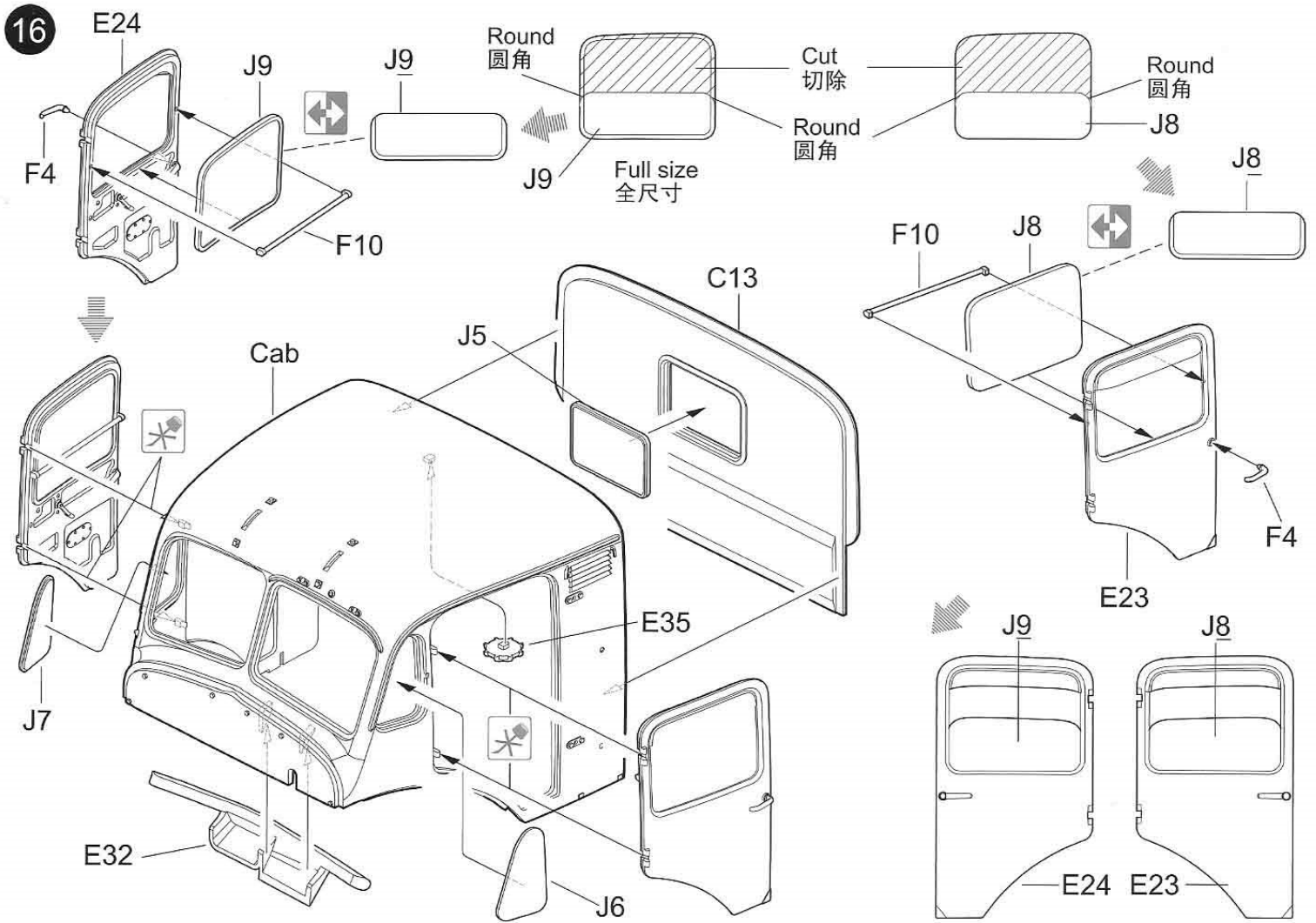
K



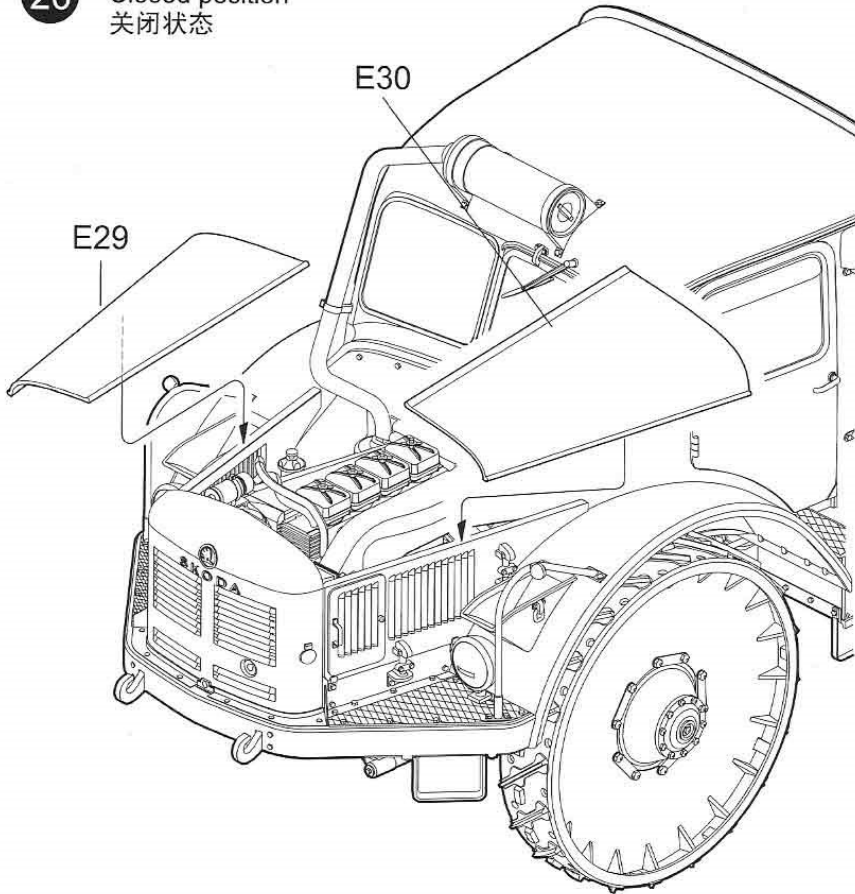
13



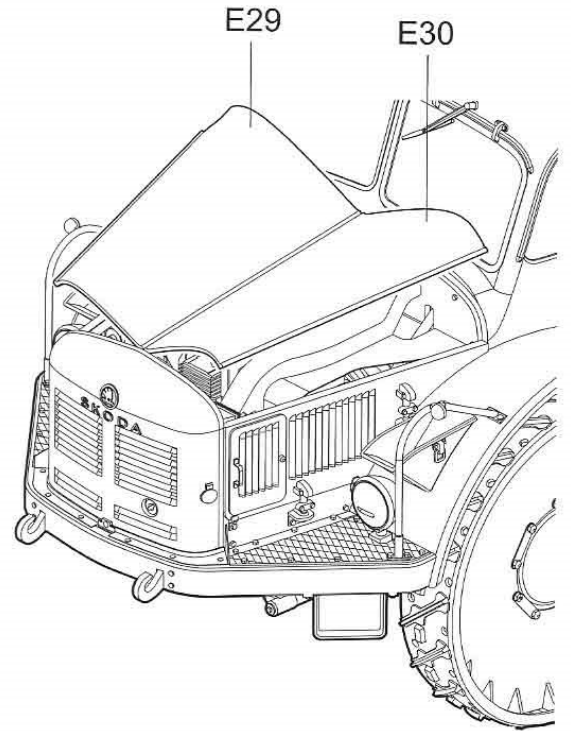




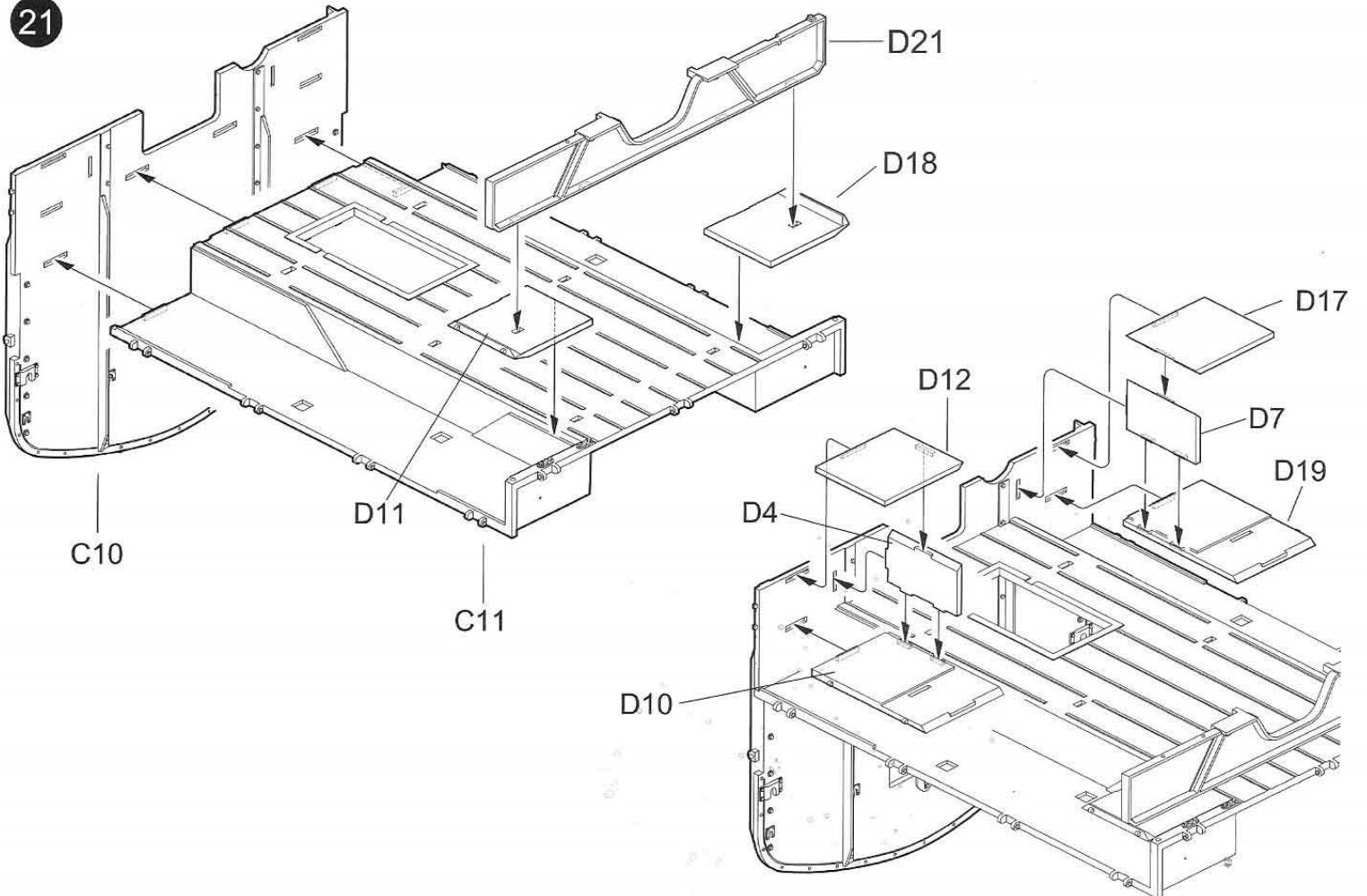
20 Closed position
关闭状态



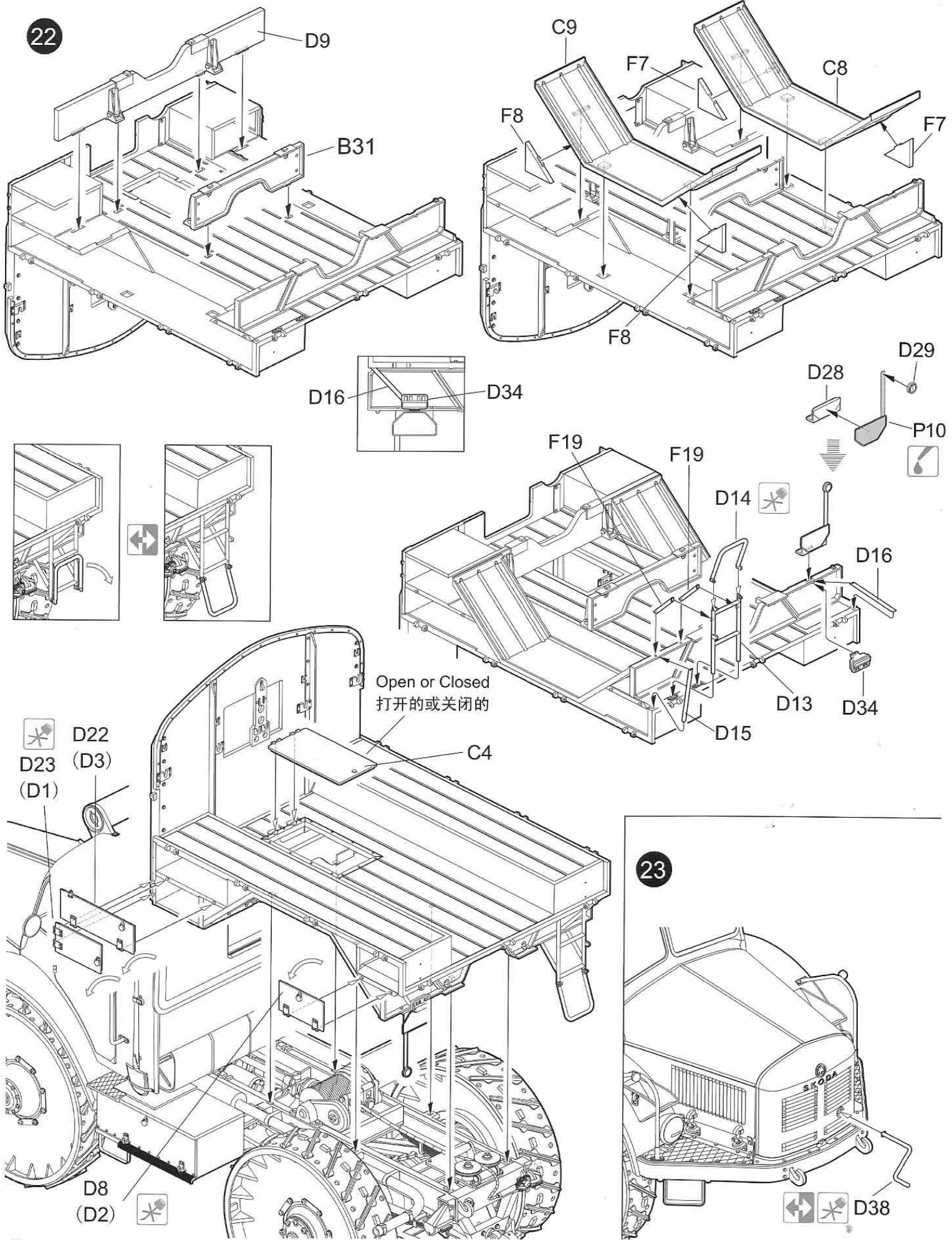
Open position
打开状态



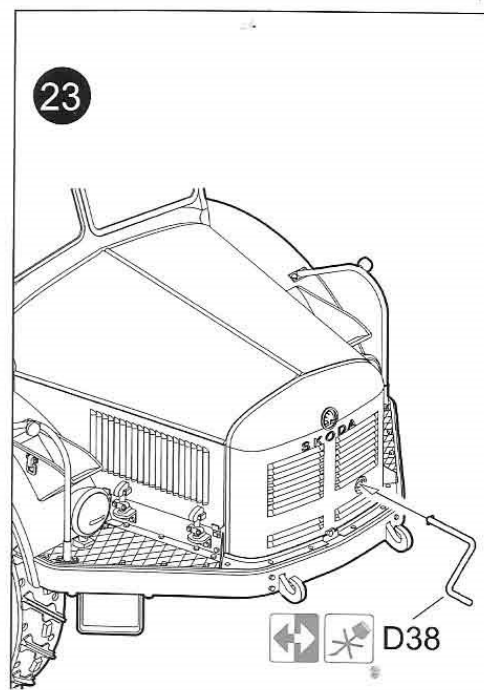
21



22

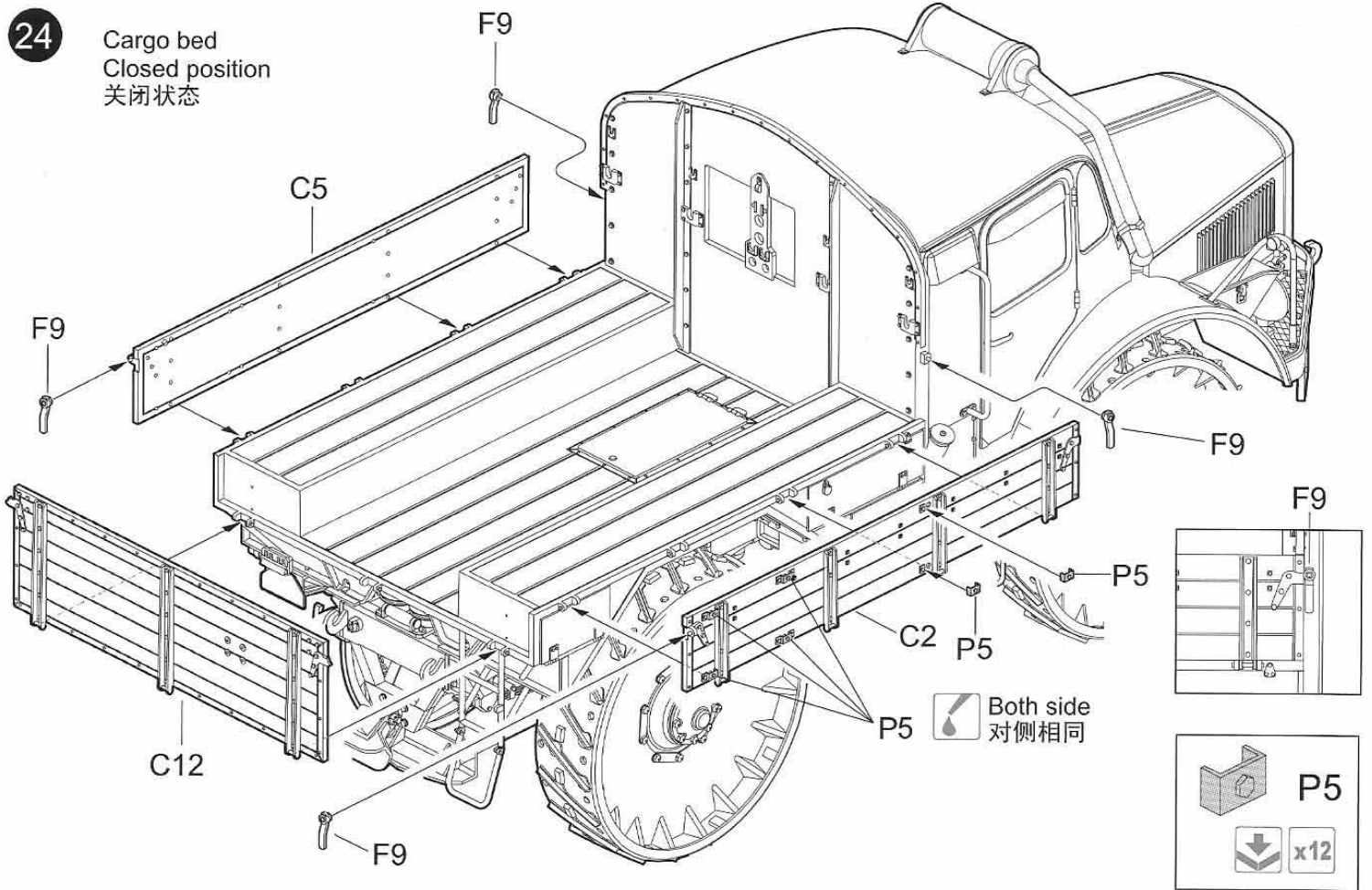


23



24

Cargo bed
Closed position
关闭状态



Cargo bed
Open position
打开状态

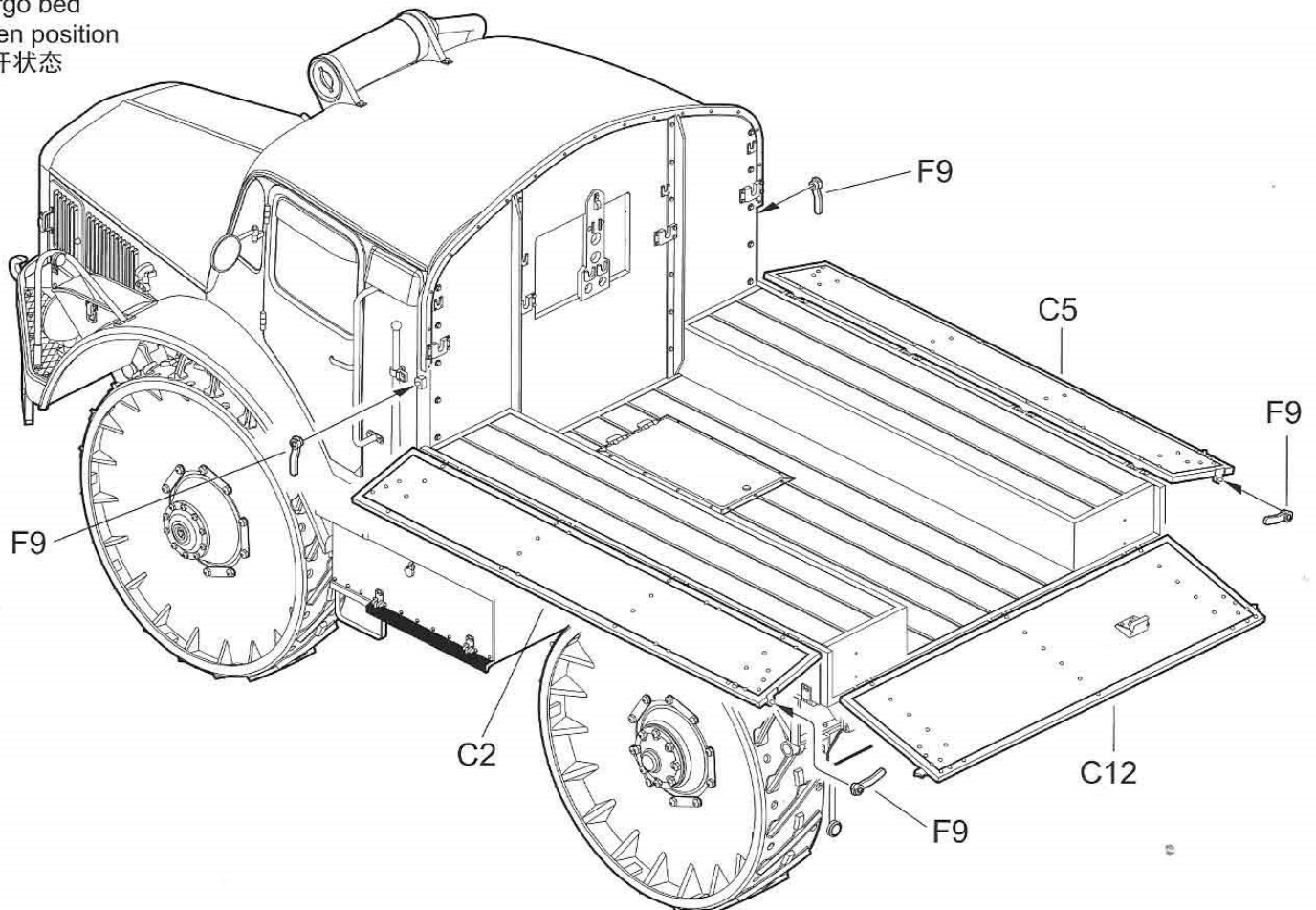
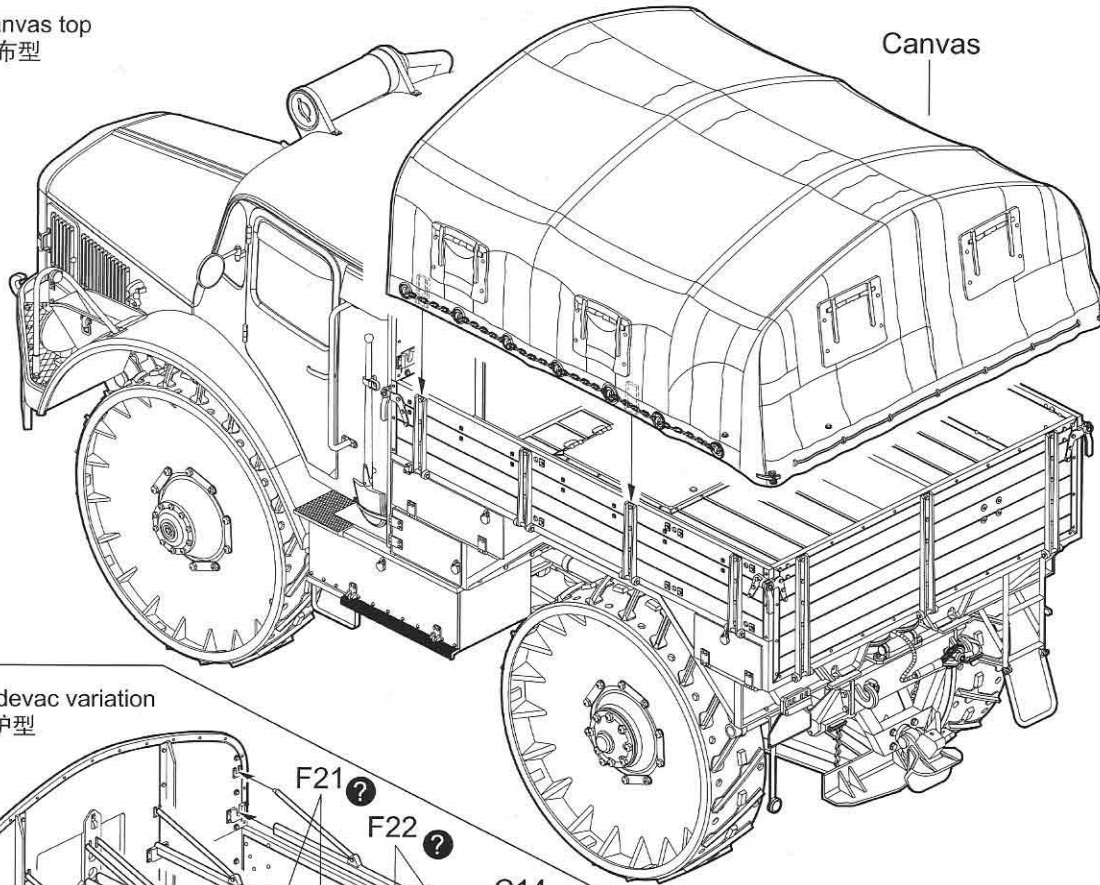
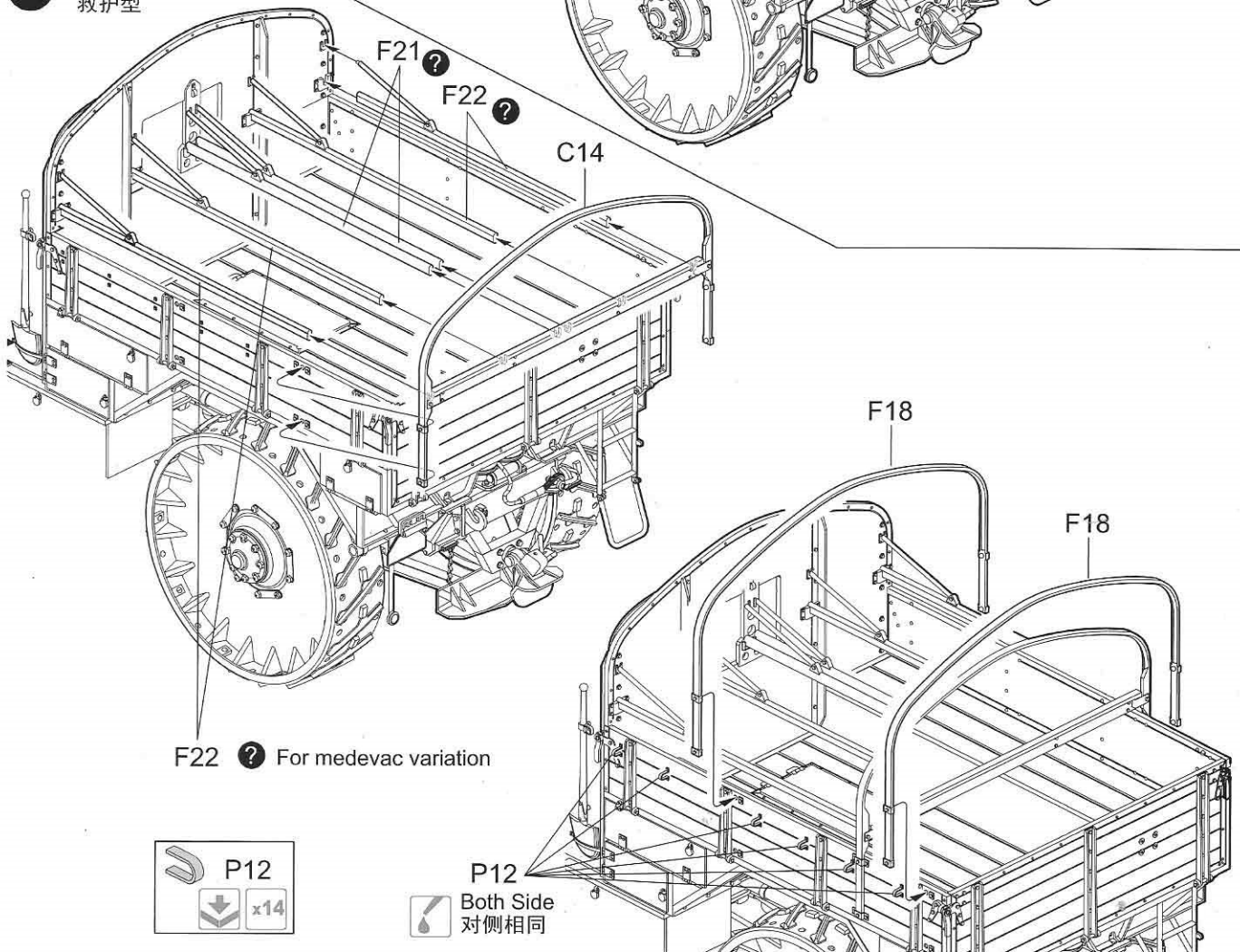


ILLUSTRATION 图文说明

25 Canvas top
篷布型



26 Medevac variation
救护型



F22 ? For medevac variation



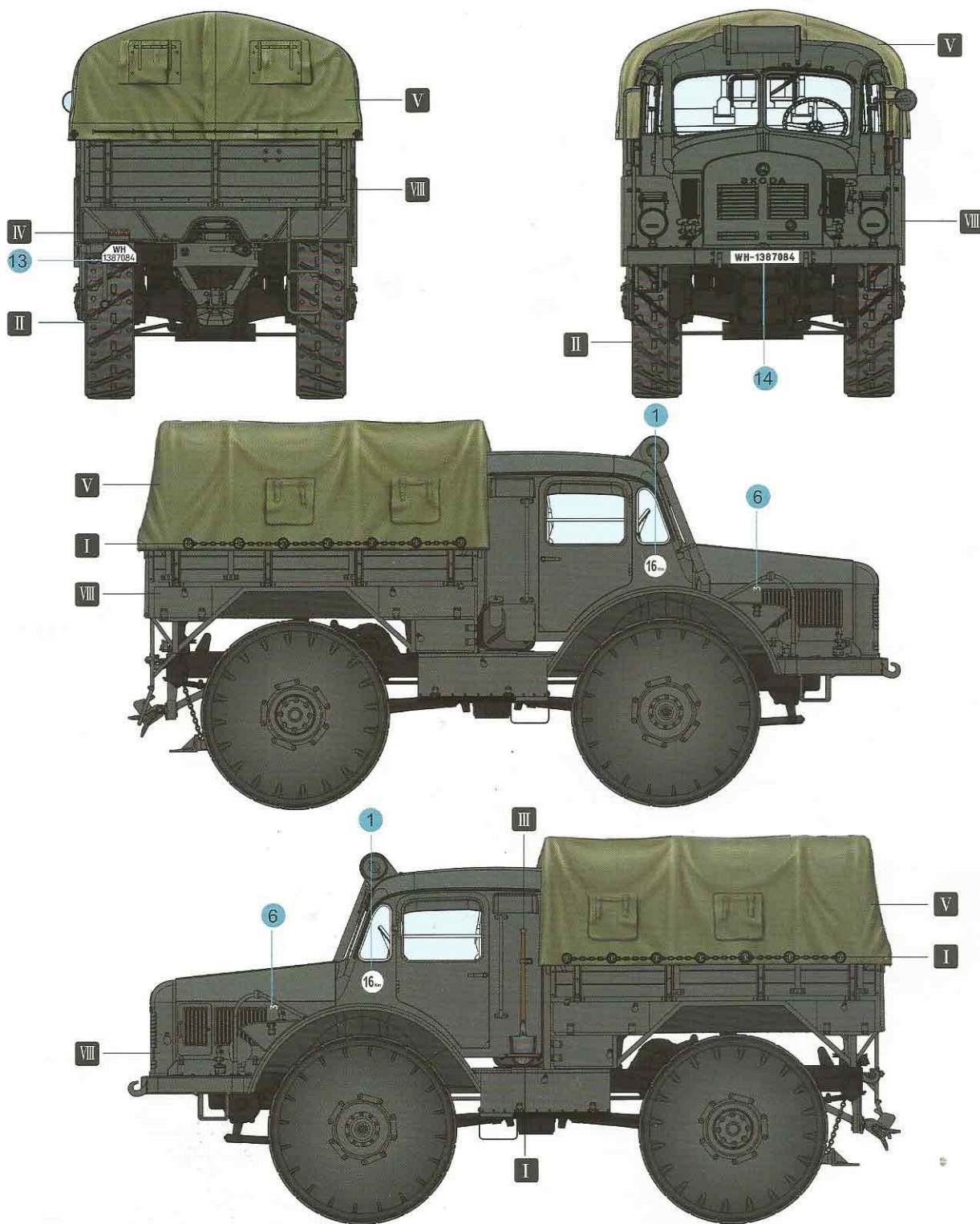
P12 Both Side 对侧相同

ŠKODA RSO - Radschlepper Ost

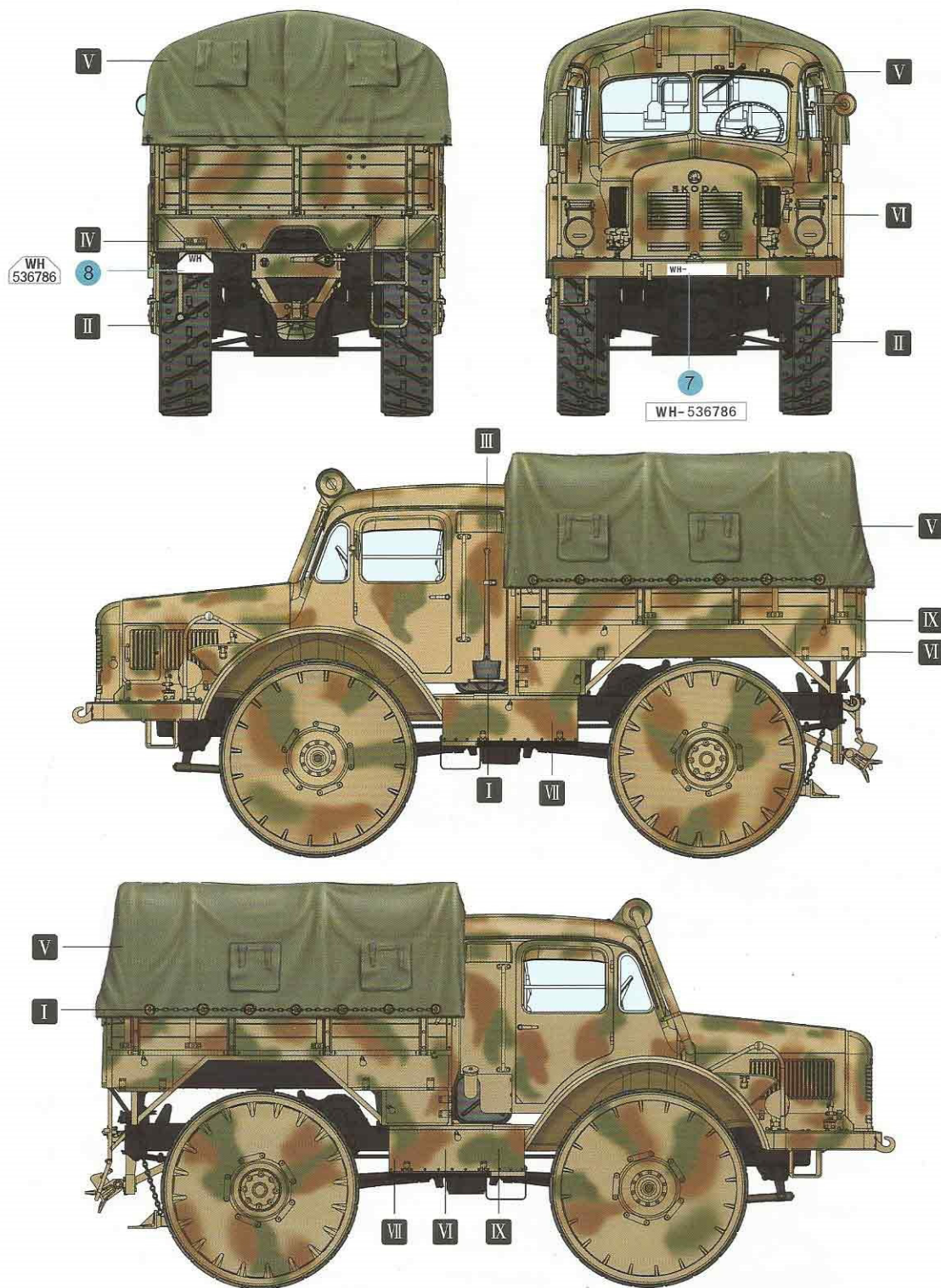
1/35 SCALE NO.RV 35005

二战德军斯柯达Radschlepper Ost大轮牵引车

Option 1: WH 1387084 Unknown unit, 1944.



Option 5: WH 536786 , Normandy, June, 1944.

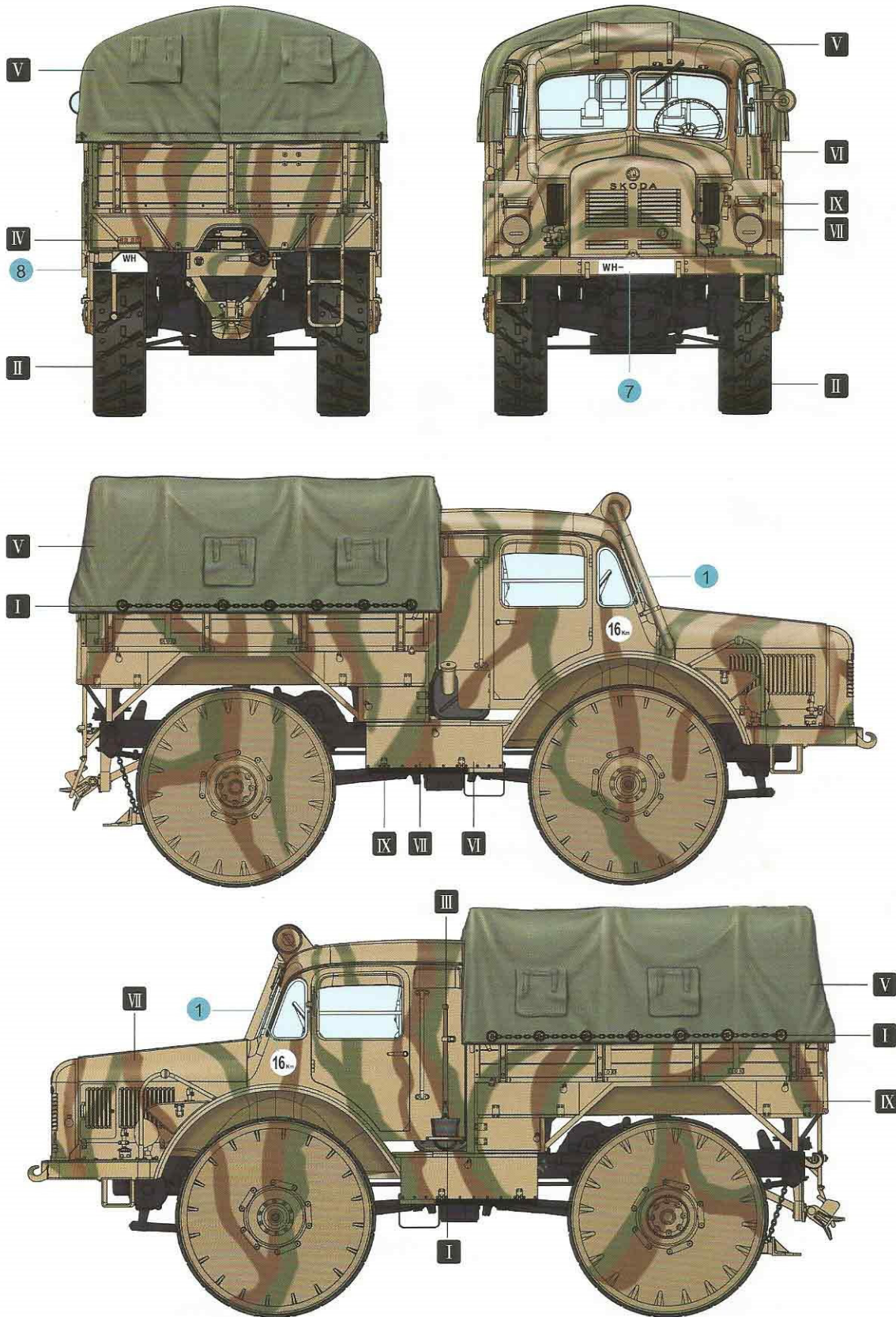


Colour	涂料表	Hobby Color	Mr. Hobby	Humbrol	Tamiya	Colour	涂料表	Hobby Color	Mr. Hobby	Humbrol	Tamiya		
I	Steel	黑铁色	C-28	H-18	53	X-10	VI	Dark Yellow	深黄色	C-39	H-79	83	XF-60
II	Tyre Black	轮胎黑	C-137	H-77	85	/	VII	Red Brown	红棕色	C-41	H-47	160	XF-64
III	Wood Brown	木棕色	C-43	H-37	10	/	VIII	German Gray	德国灰	C-40	H-32	67	XF-63
IV	Clear Red	透明红	C-47	H-90	/	X-27	IX	Olive Green	橄榄绿	C-38	H-78	66	XF-62
V	khaki	卡其色	C-55	H-81	26	XF-49							

*Some paints may not be available in your country, Please check your local hobby shop for substitute.

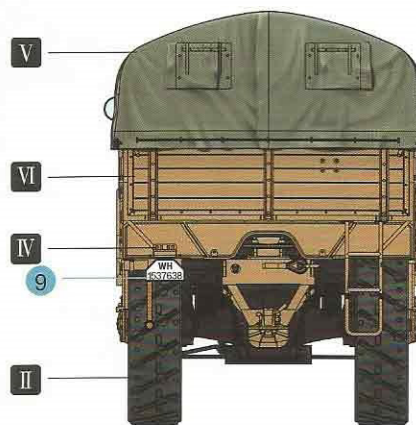
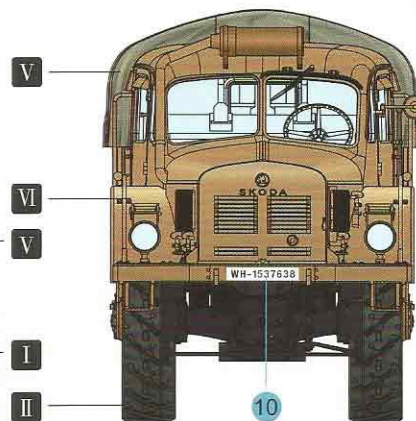
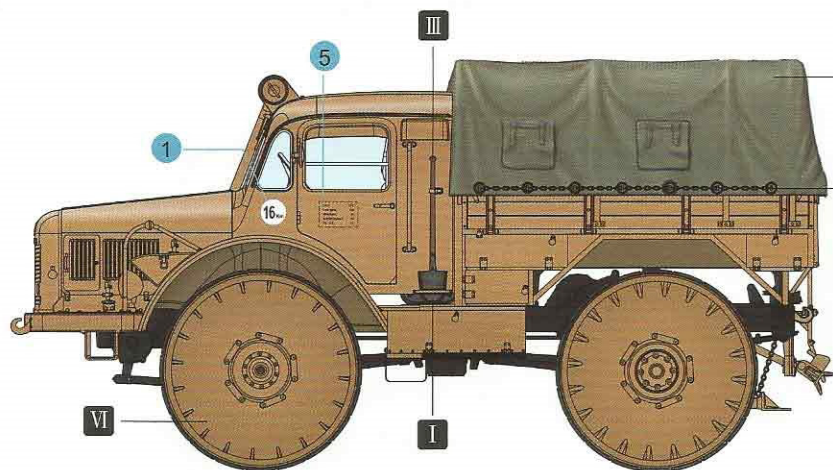
Option 4:

Unknown unit and unknown licence plate.



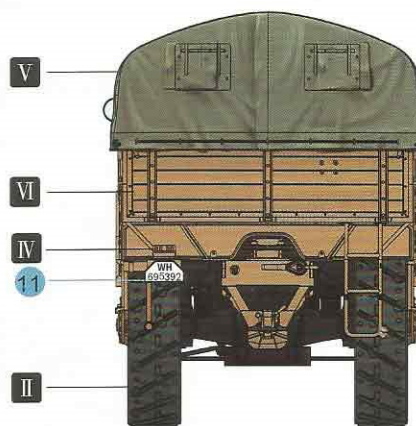
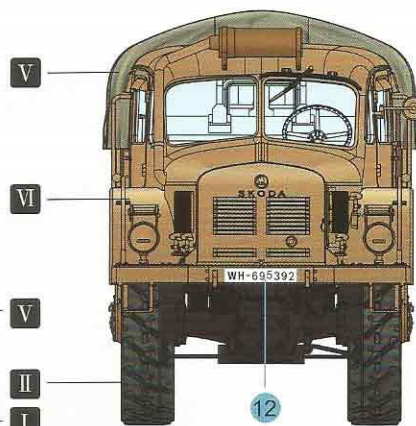
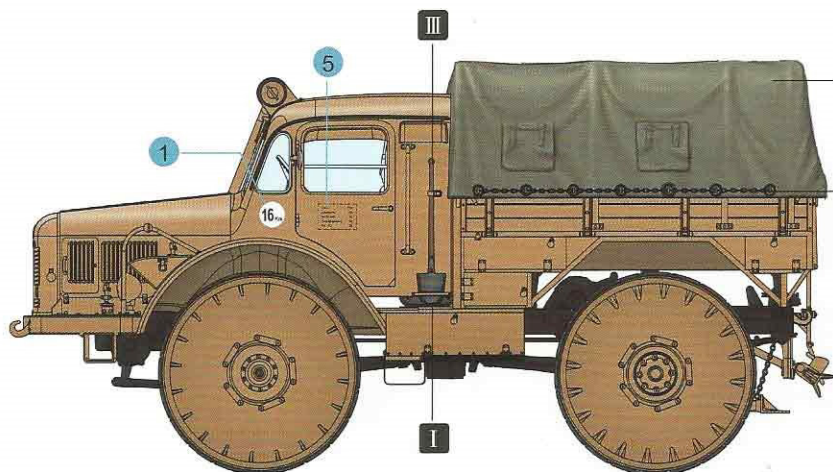
Option 2:

WH 1537638 Normandy, June, 1944.

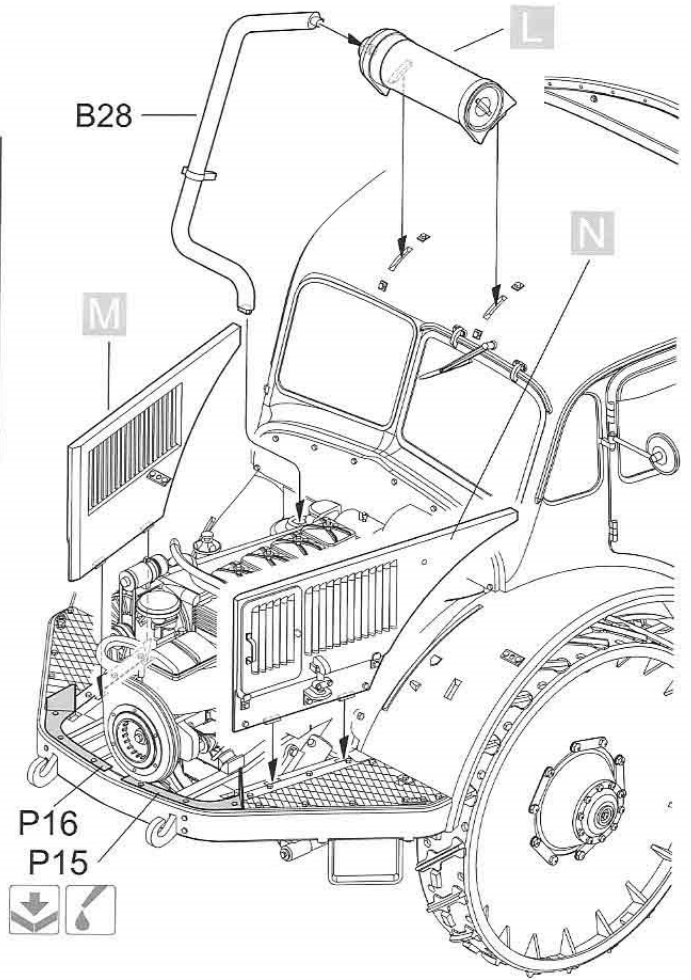
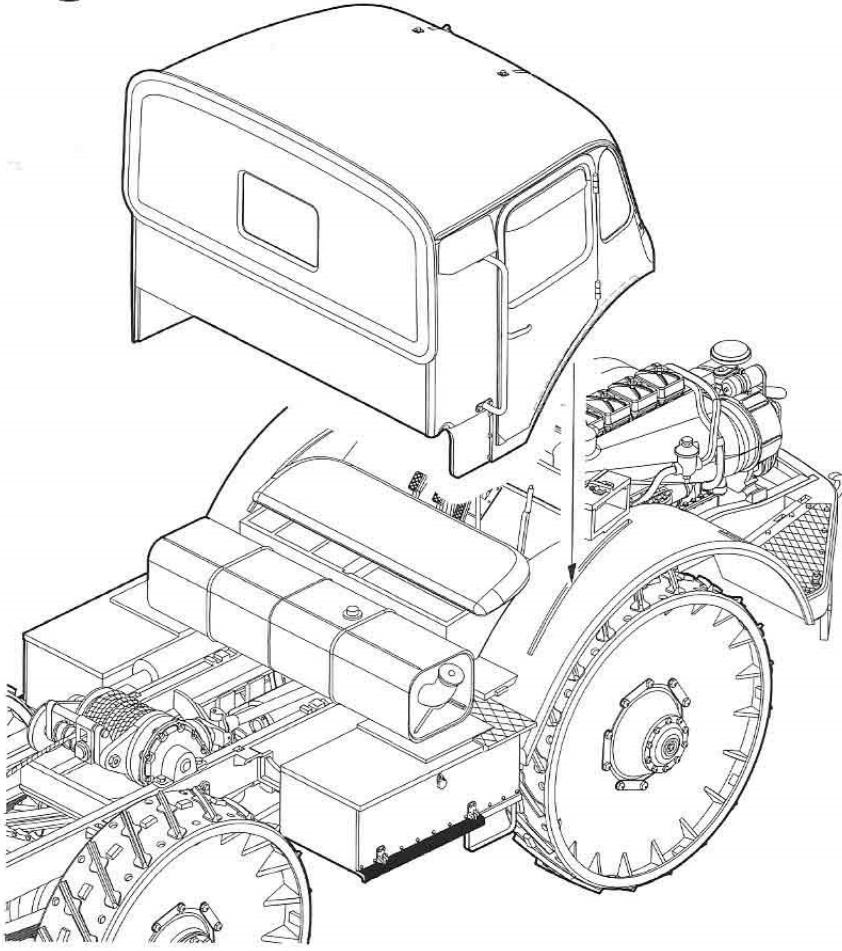


Option 3:

WH 695392 the Battle of the Bulge
(Ardennes Offensive), Dec., 1944.



18



19

