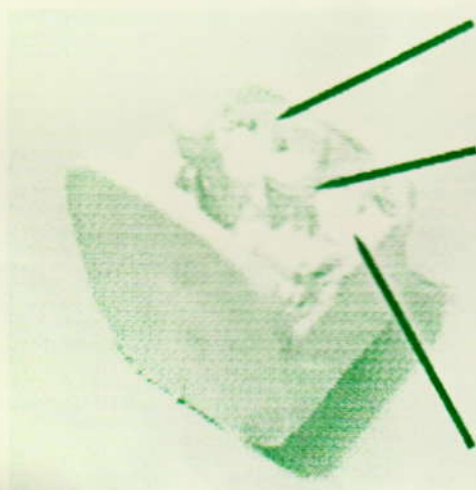


1/72 DHC-4 Caribou Cockpit Detail Set.

Well, we all waited, some laboured over the Combat Vac-Form kit back in the 60's, some tried the recent Classic Wings multi-media kit, whilst others braved the 1990 Uncle Les's resin kit. We all waited for the much vaunted Canadian injection moulded kit and some of us sent in our money, only to have it returned months later. Finally, Hobbycraft release an injection-moulded kit. Hurrah we all cried - until we opened the box....

The kit has a number of shortcomings, some of which I shall mention here, but the worst of all was the total blandness of the cockpit. As I wanted to at least give the impression of something happening inside the 'office' on my model, I created this detail kit.

There are 2 components to this kit, the cockpit tub and the overhead console. The diagrams below will assist in painting your new cockpit and will indicate what goes where. Retain parts C3 and C42 (x2) from the kit to form the control columns. Make sure you sand down the mould gate area underneath the assembly before you attempt to assemble. (It's obvious!) Now, down to business.....

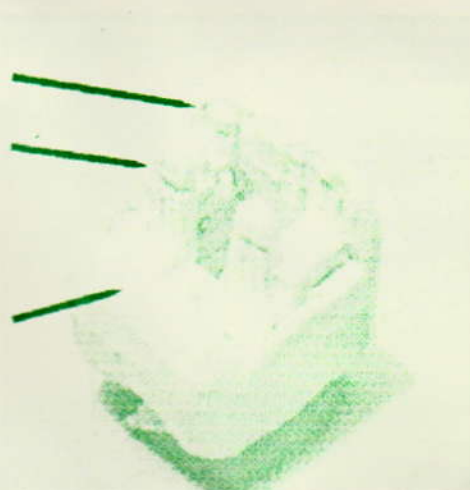


Paint these areas a light grey, about FS36492, and then wash with black.

Seats are light grey with dirty tan colour covers. Belts can be dry brushed in white and then apply a wash of black.

This area should be just visible beneath the canopy. Paint black.

All side panels and radio shelves are generally black. They look better if painted grey and washed in black.



Cut console from backing section and attach to roof of canopy. Paint black and dry brush with white. Whilst gust locks, throttles and prop levers are represented by low-relief detail on the detail piece, you may wish to add longer levers from sprue - see photo on the left for reference. Also note the off-white curtains on the top front canopy sections. (Yes, that's Uncle Les twiddling the knob!)

Attach cockpit assembly to fuselage with the rear wall of the assembly butt up against the clear fuselage window component. It should fit snugly in place.

You'll need to weigh the nose down a bit so use some plasticene and do some dry-fitting to gauge how it sits.



A word or two of advice about the Hobbycraft kit, check some references. Wingtips, nacelles, intakes, etched panel lines - all need a serious look if you're to make an accurate kit of the Caribou. Have a look at the picture above (with Uncle Les looking for his watch) and you'll see that the nose is a bit different from the kit. (Although after reducing, cropping and copying it's hard to see.) It's a pity that more research into the exact locations and shapes of various items on the aircraft wasn't done before the kit was produced. Another area of concern are the fairings just outboard of the engines on the upper wing surfaces. Again - check your references and cringe when you realise the amount of work it will take to correct!

The Squadron Signal book on the C7 and various RAAF related publications are your best source of exterior detail. For the masochist who decides to detail the interior of the cabin of this kit I have two things to say. "Good luck" and "Have you considered 1/48?" !!

I could go into detail but I won't here, I'm putting together a manual for the local modelling community (my mates) and if there's a demand I'll doll it up and publish it so if you care to write to Uncle Les, P.O.Box 814, Castlemaine Vic.3451 Australia and say something like "How about you construct a manual from all that info you have hidden away" I'll look into it.

Now, stop wasting time reading this and make a model !!