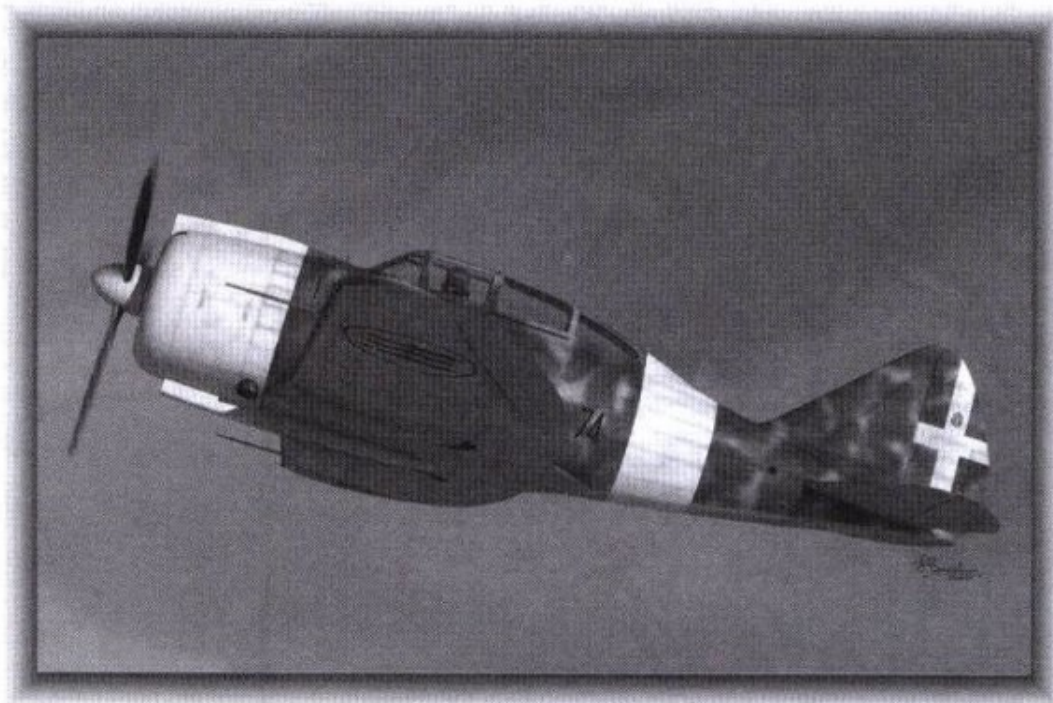


Reggiane Re.2000

SW 72111 scale: 1/72



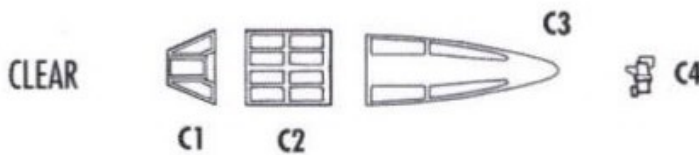
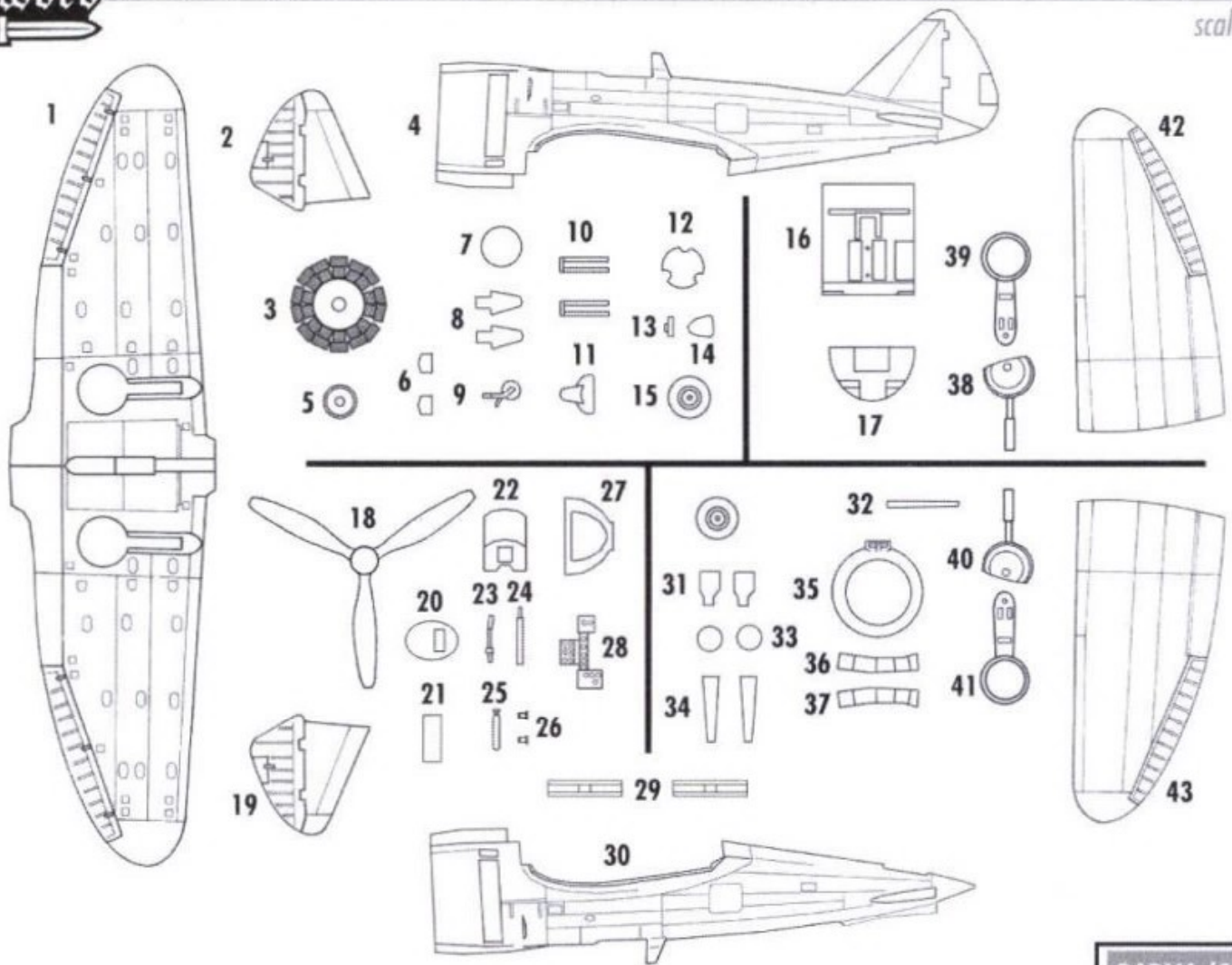
Reggiane Re 2000 Falco (Hawk) I

The Re 2000 was an Italian all metal single engine mono-plane with retractable landing gear. It had a stressed aluminium skin. The elliptical wing housed the fuel tanks giving the aircraft a substantial range. A large rearward sliding canopy gave the pilot good all round visibility. The main gear rotated 90 degrees and retracted rearward into the wings. The first flight was in May 1939 and testing showed that the lightly built and highly manoeuvrable RE 2000 interceptor / fighter could outfight several of the significant fighters of the time. It entered service in 1940 armed with 2 x 12.7mm machine-guns mounted in the upper fuselage, and a small bay that could hold 4.4lb / 2kg incendiary bombs. Prior to, and during the outbreak of WWII, this aircraft was ordered by several nations including Great Britain (cancelled), however, only Sweden (60) and Hungary (70) were supplied. Hungary went on to produce 200 licence built MÁVAG Héja (Hawk) II. The Hungarian aircraft were used on the Eastern Front. Italian production was limited and most aircraft exported, the non-sealing fuel tanks in the wing deemed a technical failing due to vulnerability an leakage. The Piaggio engine was unreliable and needed considerable maintenance.

An RE2000 GA (Grande Autonomia) with extra fuel capacity was intended as a long range reconnaissance aircraft being able to reach Eastern Africa.

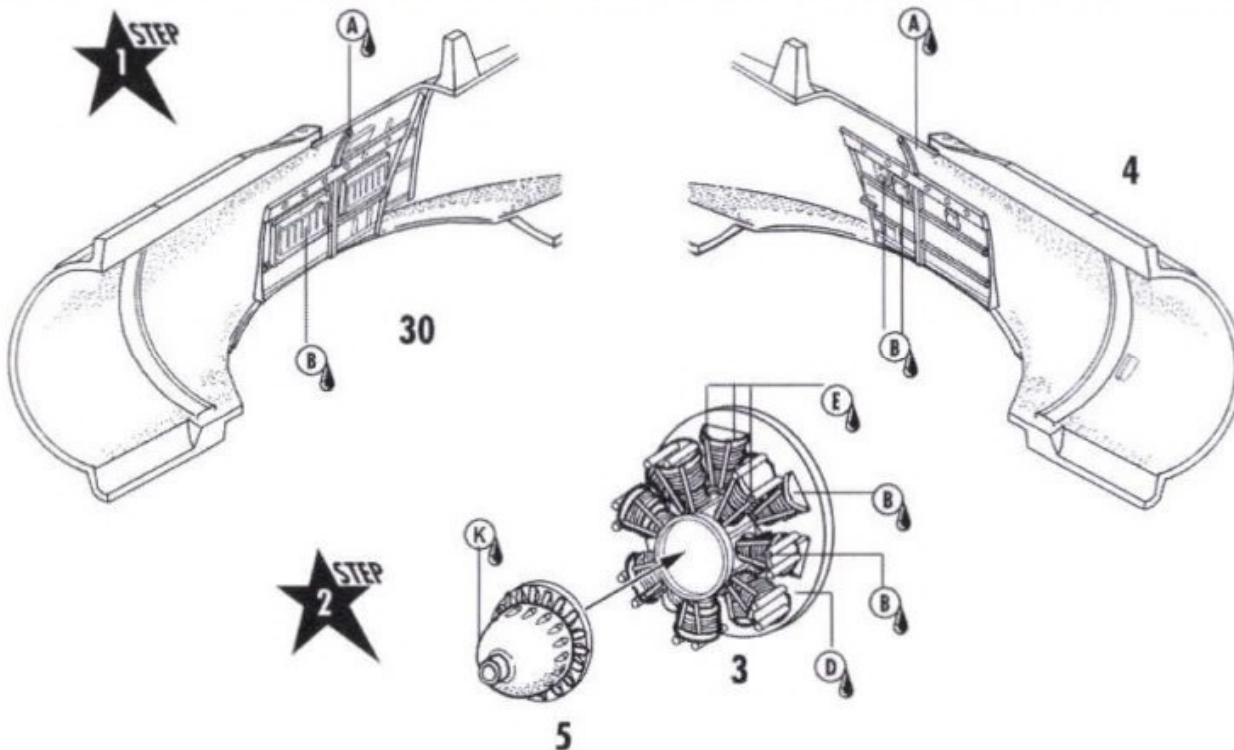
The Re2000 Cat. was a marine catapult launch variant to be carried by ship, but had to make a normal landing as it could not be recovered at sea.

The prototype Re 2000 reached 518km/h (322 mph) at 5250m (17,224ft) and a ceiling of 11,500m

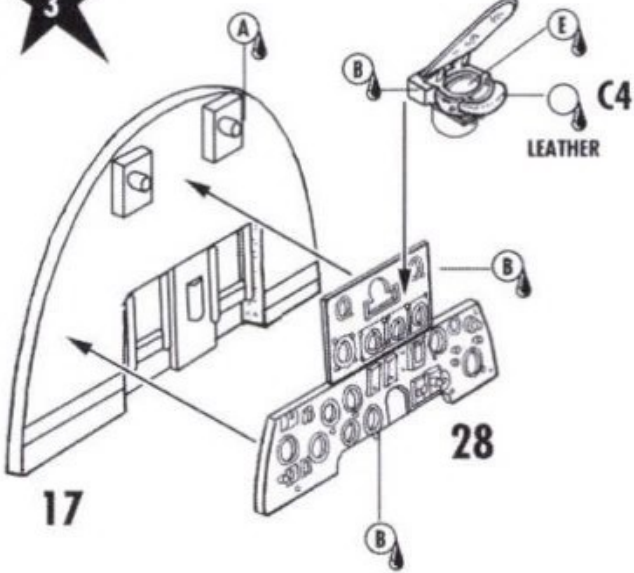


BARVA/COLOR

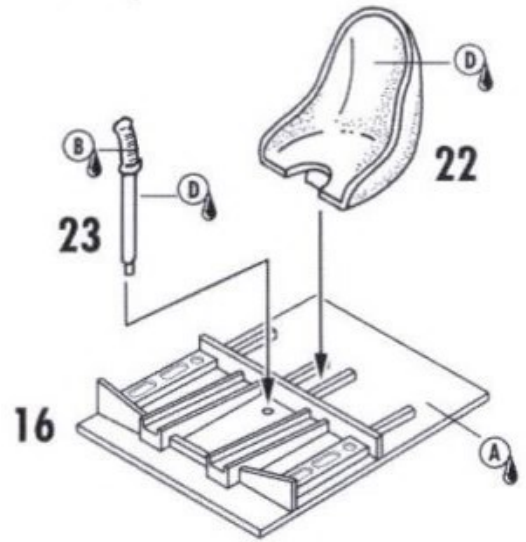
- (A) Vnitřní zelená
Interior Green
- (B) Černá/Black
- (C) Stříbrná/Silver
- (D) Hliníková
Aluminium
- (E) Chromová
Chrome
- (F) Dřevo/Wood
- (G) Rezavá/Rust
- (H) Bronzová
Bronze
- (I) Kovová
Gun metal
- (J) Barva pneu
Tyres Black
- (K) Střední šedá
Medium Grey
- (L) Tmavá šedá
Dark Grey



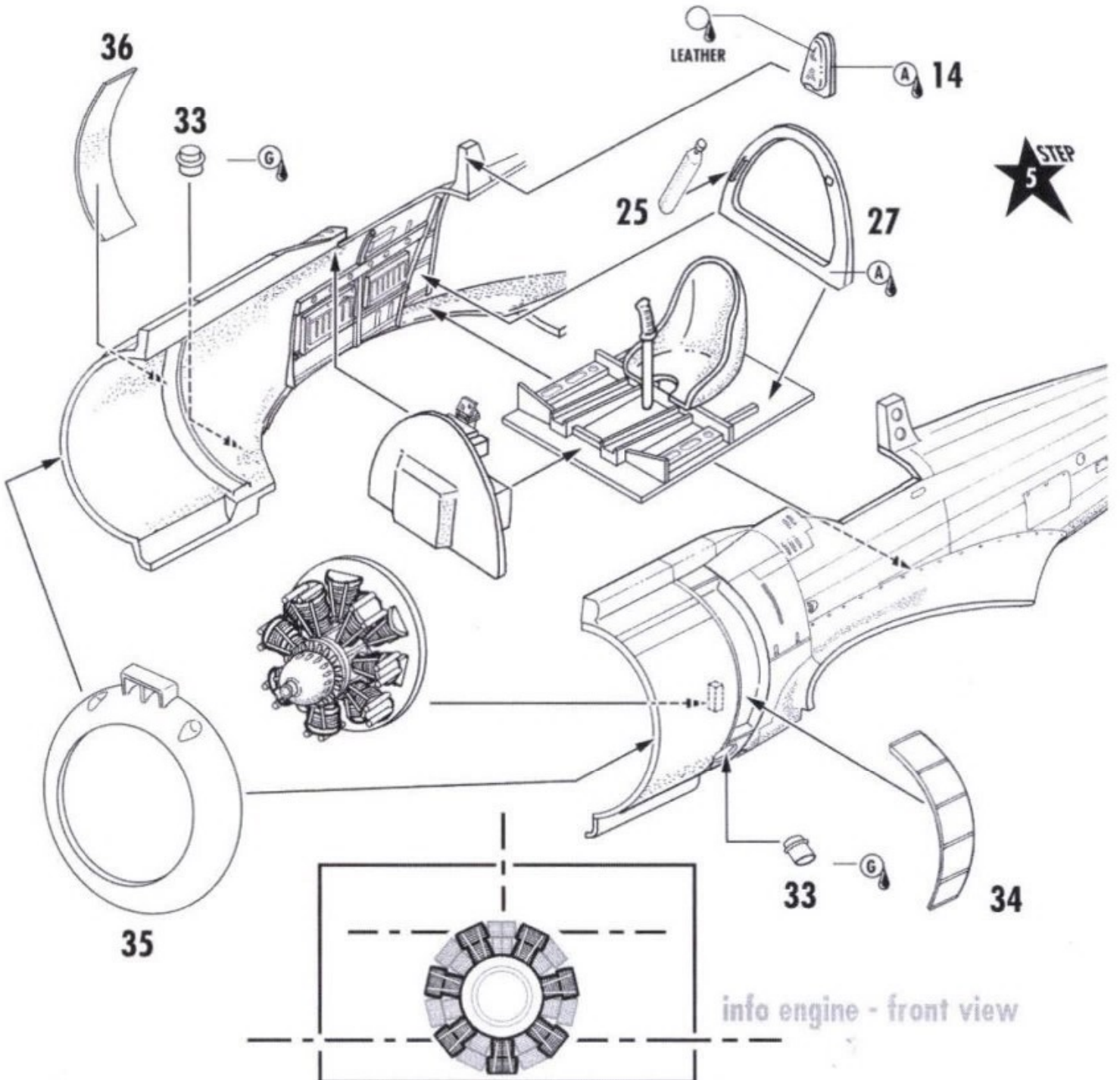
STEP 3

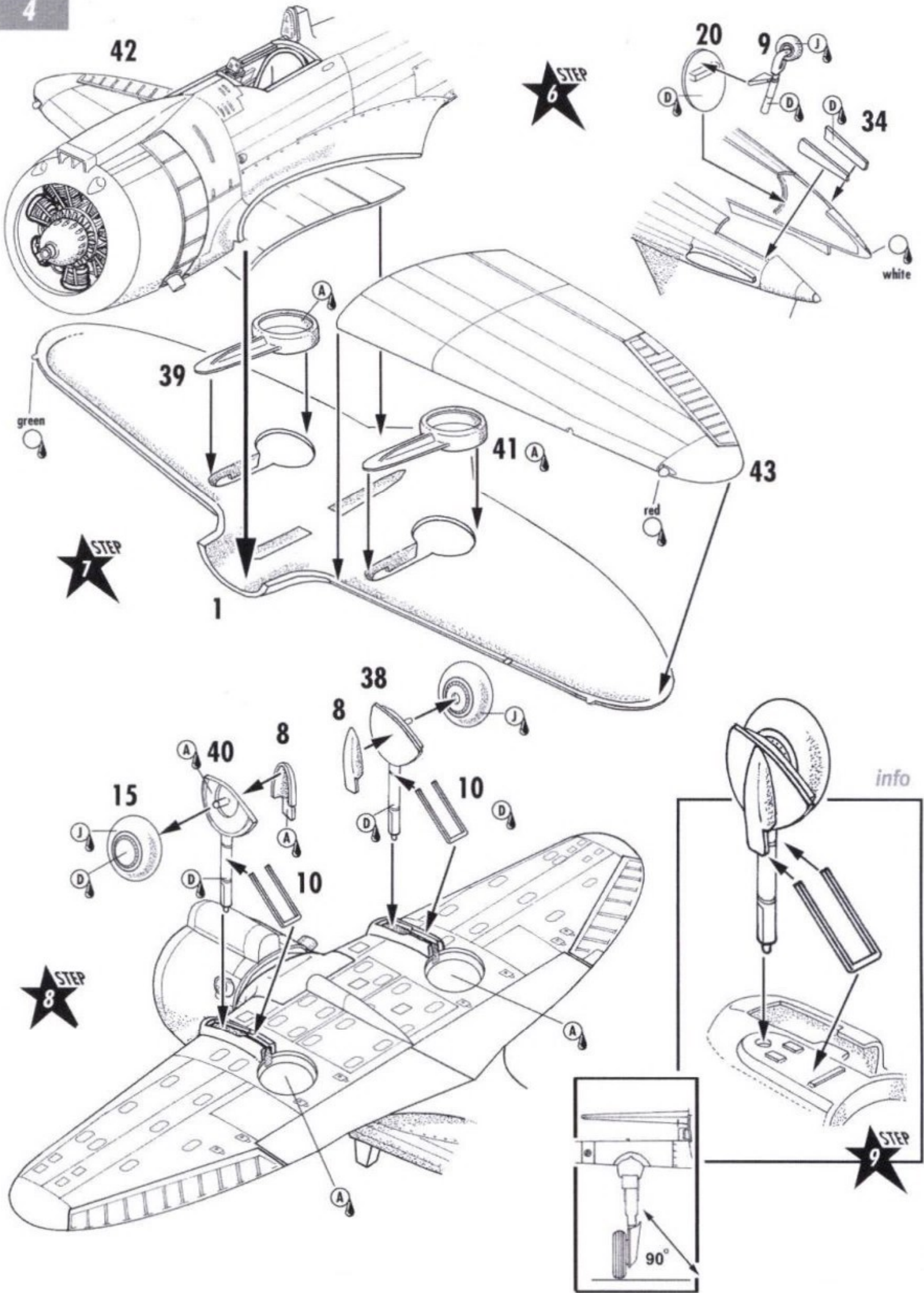


STEP 4

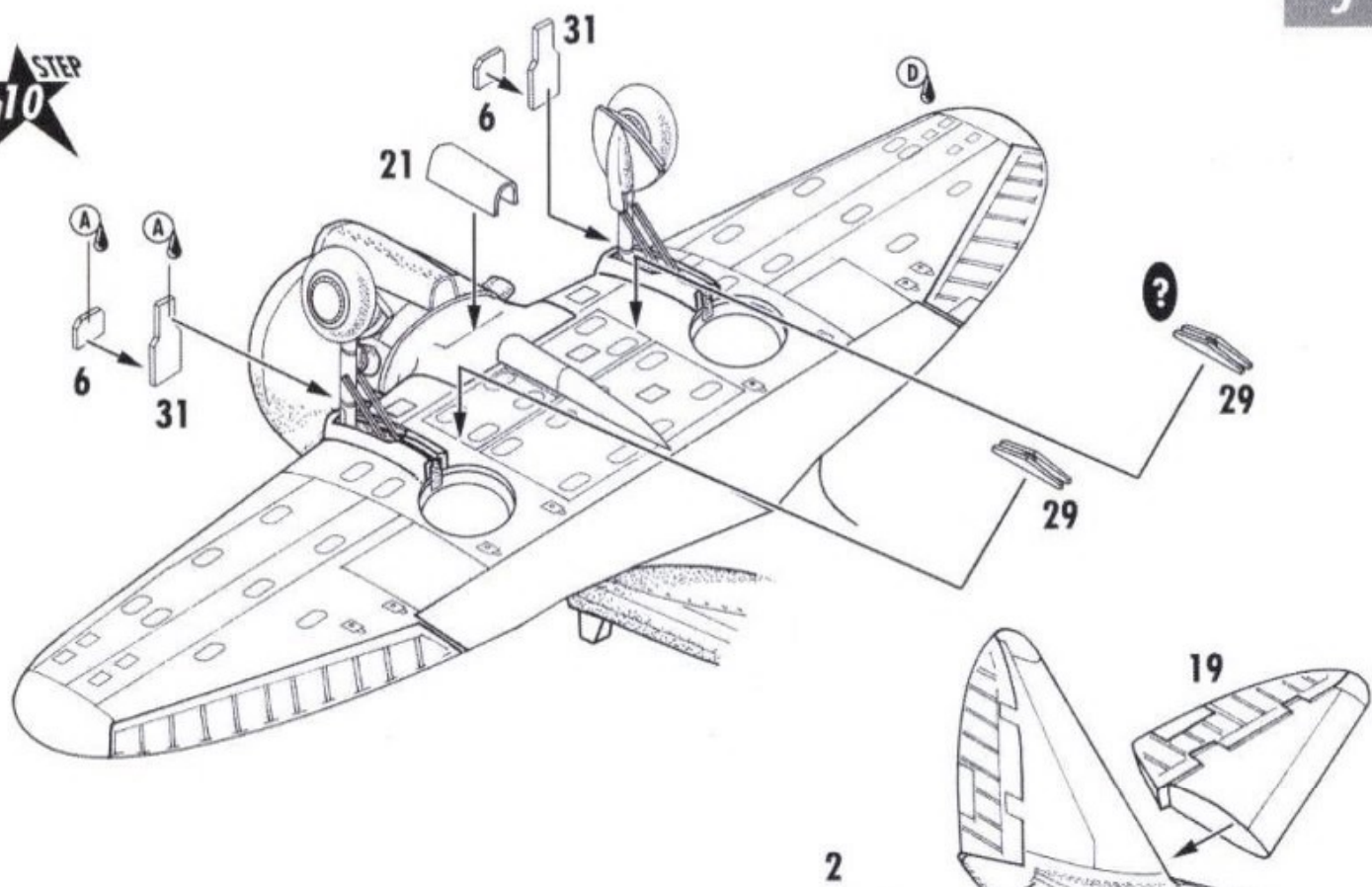


STEP 5

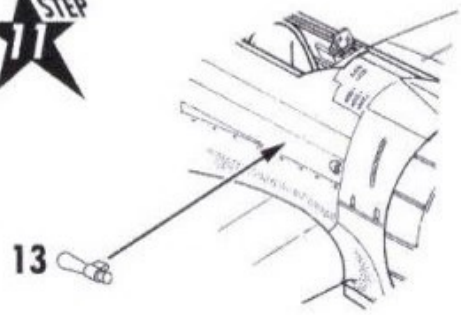




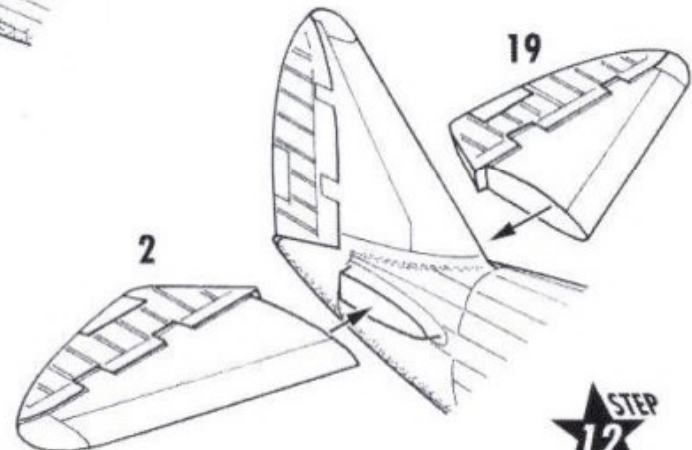
STEP 10



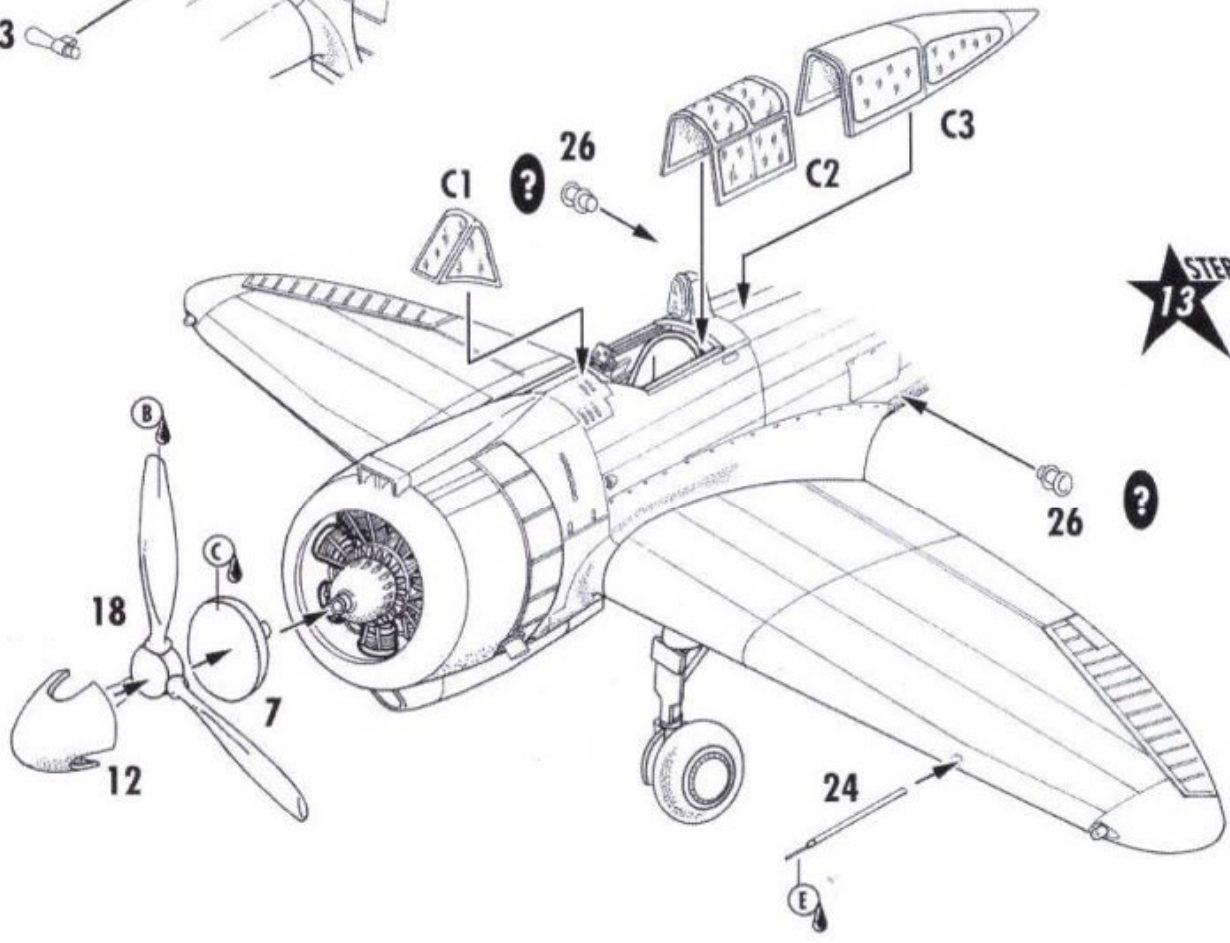
STEP 11



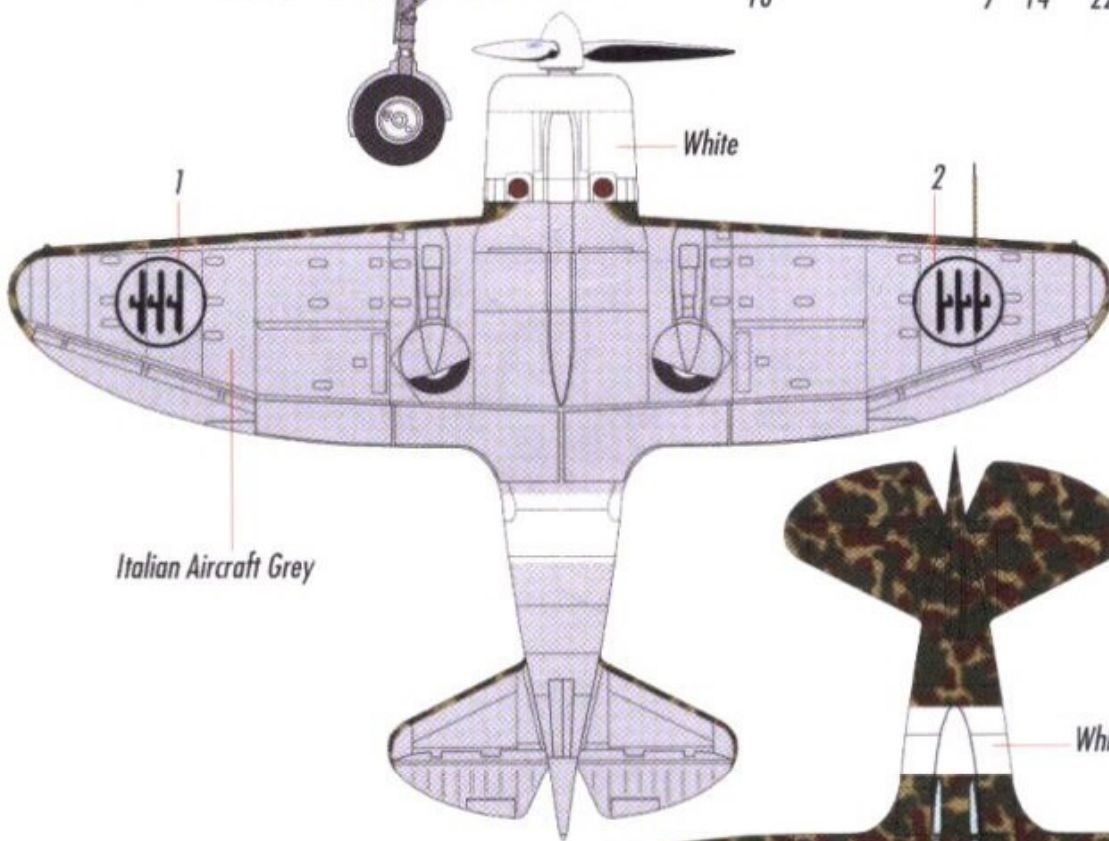
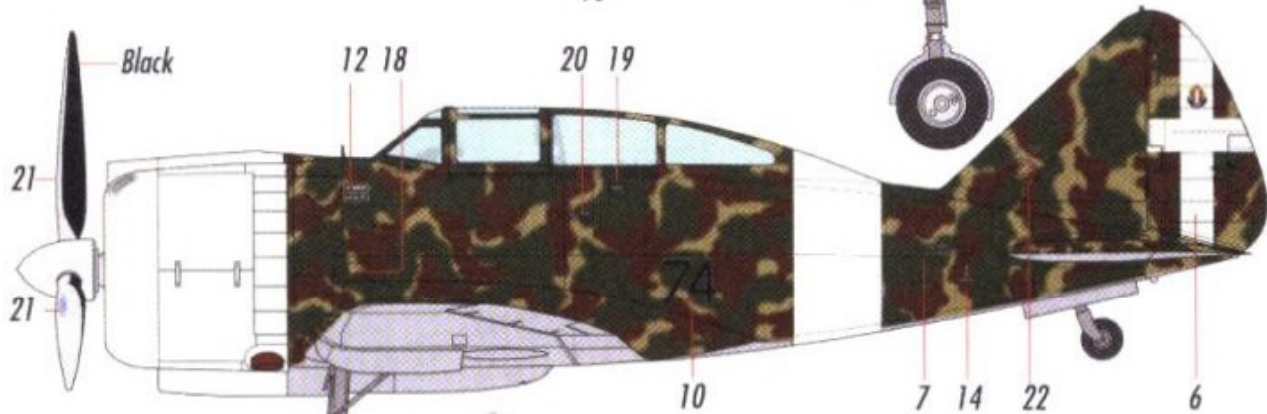
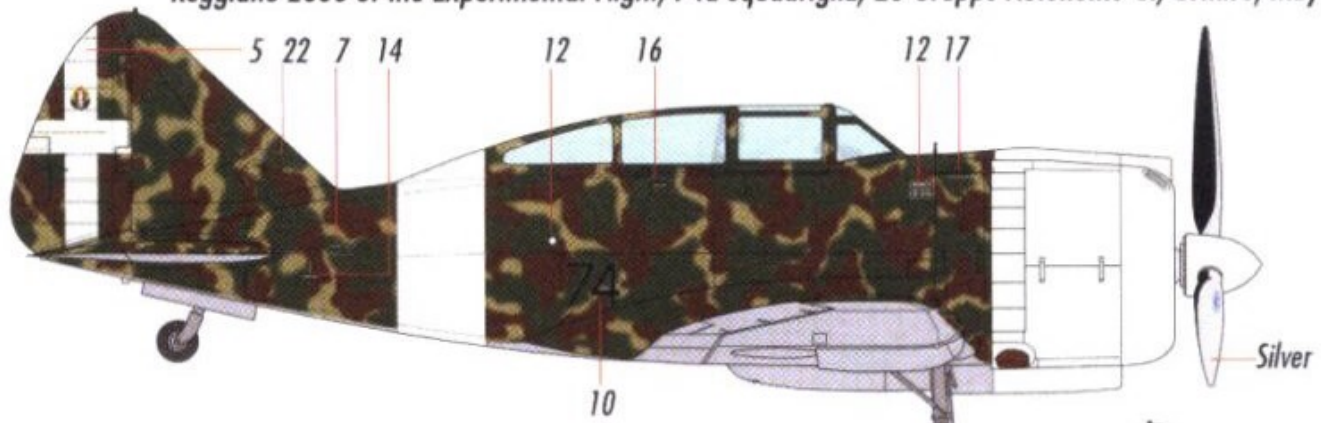
STEP 12



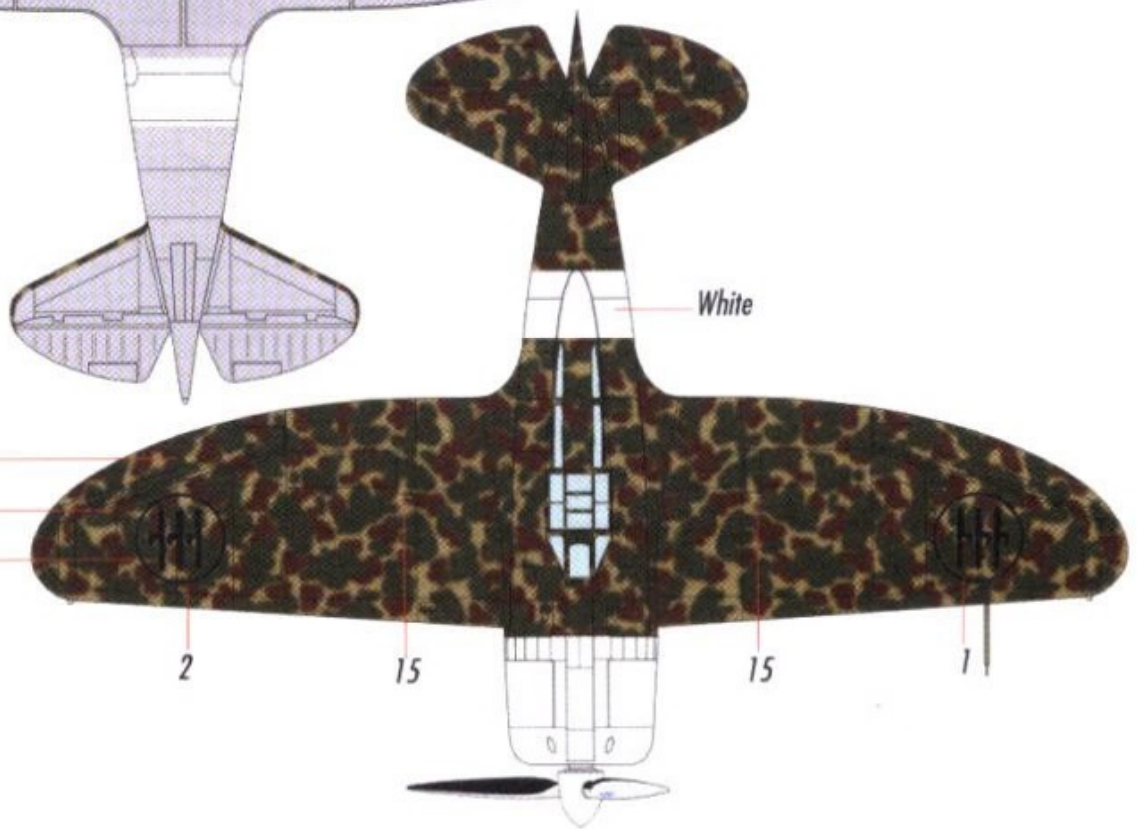
STEP 13



Reggiane 2000 of the Experimental Flight, 74a Squadriglia, 23°Gruppo Autonomo CT, Comiso, May 1941



Italian Olive Green
 Italian Dark Brown
 Italian Sand



Reggiane 2000 Catapultabile, flown by Tenente Giulio Reiner, Taranto, July 1941

