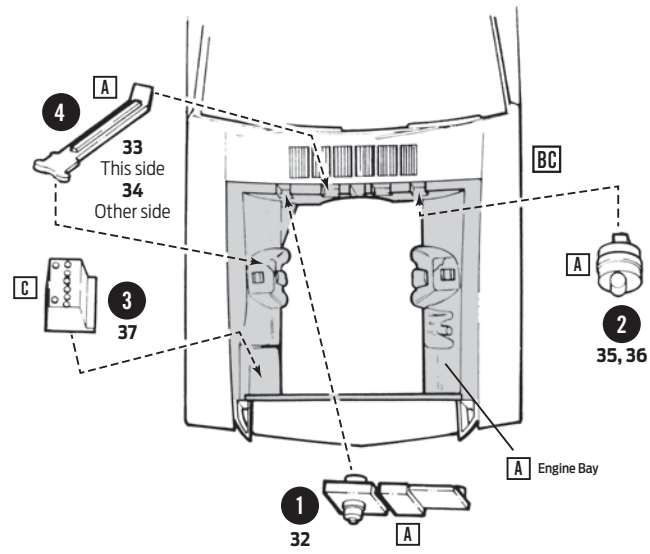
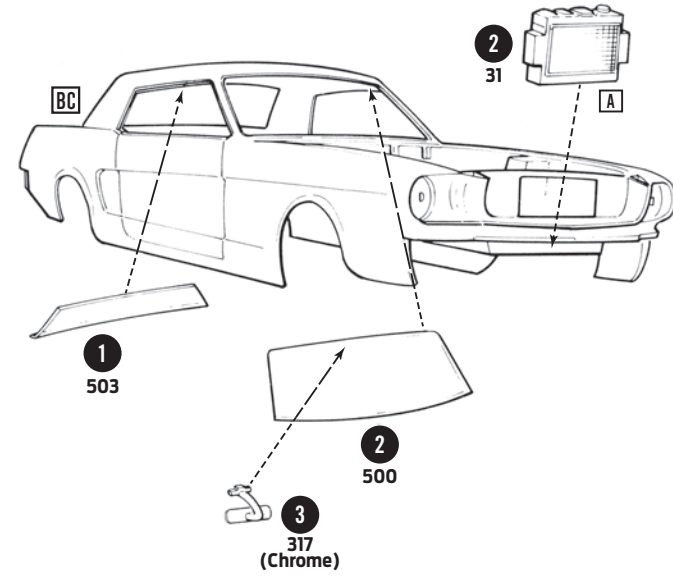


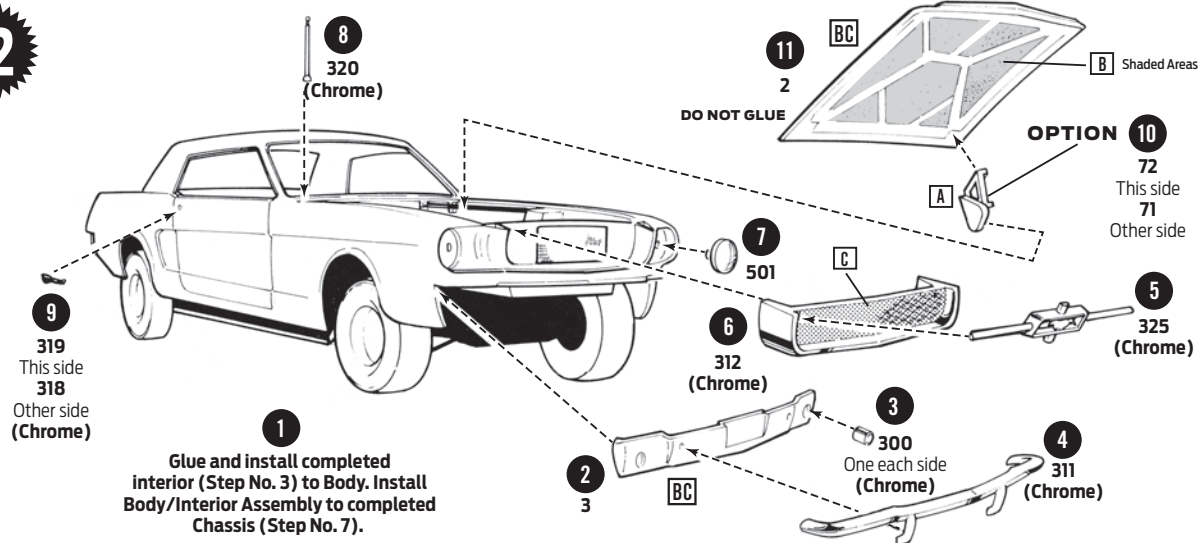
10



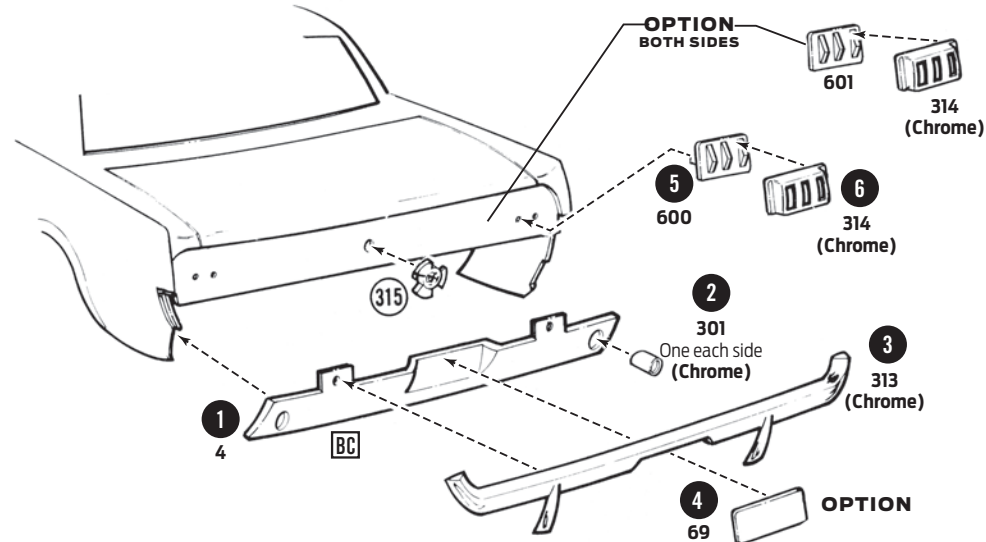
11



12



13

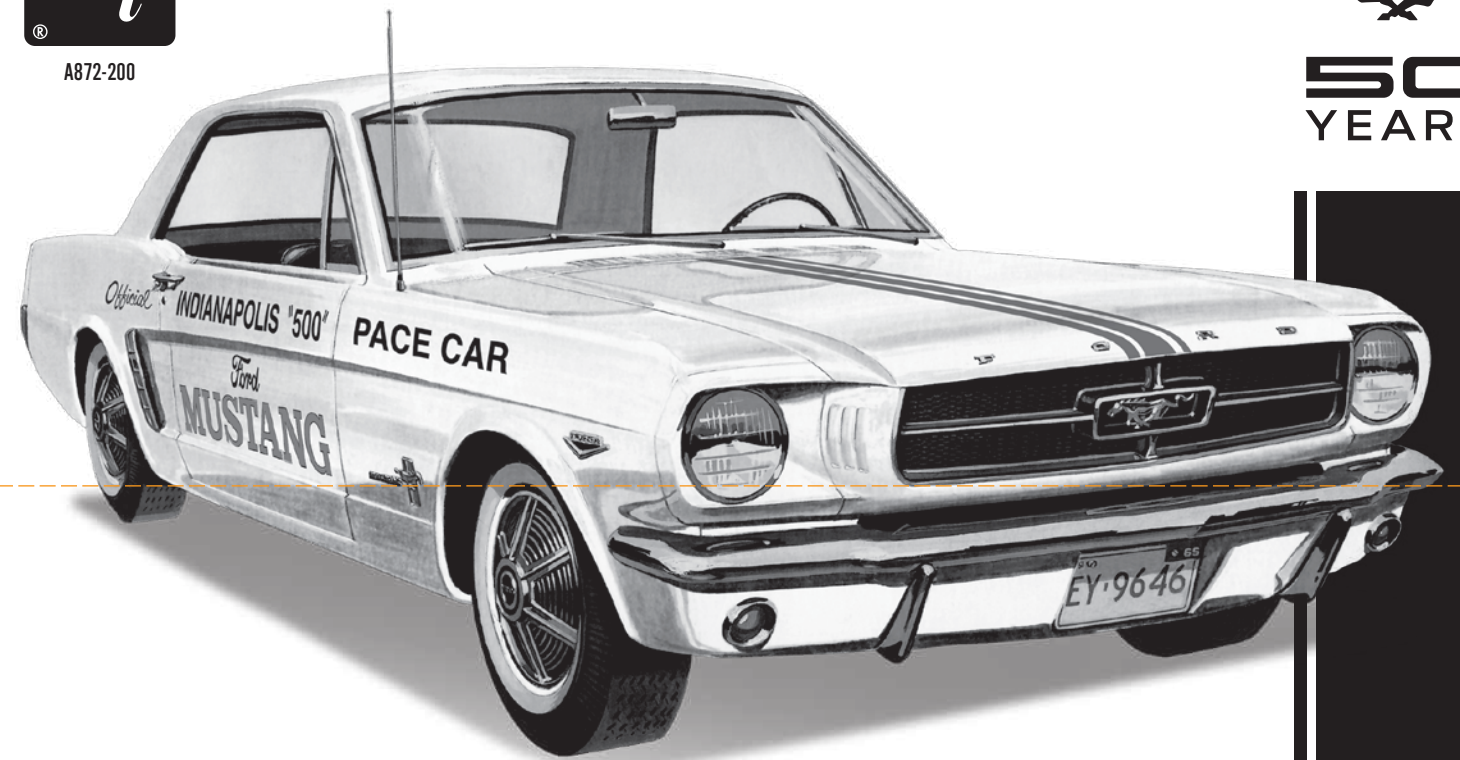


A872-200

# OFFICIAL INDIANAPOLIS 500® PACE CAR 1965 MUSTANG



50 YEARS



## READ THIS BEFORE YOU BEGIN

This kit may be built more than one way. Look over this instruction sheet carefully before you begin building. You may decide to combine parts from the different versions shown, or use parts from other AMT® kits. After you've planned your car, follow the assembly instructions and "TEST FIT" the parts without cementing. This will familiarize you with the location of parts.

For best results, the various sub-assemblies and components should be painted before any chrome parts are attached. For example: When attaching non chrome engine parts, it is best to cement them in place and paint as a unit.

AMT® kits are molded from the finest high-impact styrene plastic. Use only paint and cement made for styrene. Trim excess plastic from parts before joining. When attaching "chrome" or painted parts, scrape plating or paint away where parts are to be joined. Cement all parts unless otherwise indicated by the instructions. Use just enough cement to join parts and be careful not to smear cement on exposed surfaces.

Built according to the instructions on this sheet, you should have no trouble assembling your kit. Just FOLLOW THE NUMBERS as the instructions are numbered in order of assembly.

### PAINT COLORS

<b>A</b>	Black	<b>Q</b>	Yellow
<b>B</b>	Flat Black	<b>R</b>	Tan
<b>C</b>	Semi-Gloss Black	<b>S</b>	Brown
<b>D</b>	White	<b>T</b>	Lt. Blue
<b>E</b>	Flat White	<b>U</b>	Med. Blue
<b>F</b>	Silver	<b>V</b>	Dark Blue
<b>G</b>	Chrome (Bright Silver)	<b>W</b>	Transparent Blue
<b>H</b>	Aluminum	<b>X</b>	Lt. Green
<b>I</b>	Steel	<b>Y</b>	Dark Green
<b>J</b>	Brass	<b>Z</b>	Gray
<b>K</b>	Gold	<b>AA</b>	Purple
<b>L</b>	Amber	<b>BB</b>	Pink
<b>M</b>	Transparent Amber	<b>▲</b>	Semi-Gloss
<b>N</b>	Red	<b>△</b>	Gloss
<b>O</b>	Transparent Red	<b>▲</b>	Metallic
<b>P</b>	Orange		

### EXTERIOR COLORS

- BC** Honey Gold
- Dynasty Green
- Capsian Blue
- Champagne Beige
- Rangoon Red
- Silver Smoke Gray
- Wimbledon White
- Tropical Turquoise
- Prairie Bronze
- Ivy Green
- Vintage Burgundy
- Silver Blue
- Poppy Red
- Twilight Turquoise
- Phoenician Yellow
- Arcadian Blue
- Springtime Yellow

### INTERIOR COLORS

- IC** White
- Black
- Medium Blue
- Medium Turquoise
- Medium Ivy
- Palomino
- Red

Ford Motor Company Trademarks and Trade Dress used under license to Round 2, LLC. www.FordMotorCompany.com Goodyear (and wing foot design) and Eagle are trademarks of The Goodyear Tire & Rubber Company, Akron, Ohio USA used under license by Round 2, LLC. Firestone and F Shield Logo are registered trademarks of RFS Brands, LLC and are used with permission. AMT and design and ROUND 2 and design are trademarks of Round 2, LLC. ©2014 Round 2, LLC, South Bend, IN 46628 USA. Product and packaging designed in the USA. Made in China. All rights reserved.

