

Photo's By Steven Evans

Pics In order of parts and positioning: 1. Front view show show parts No 2, 8, 22 and 13. 2. Shows sand filter box join.  
3. Rear antennas and gutter rail. Part No 5, 7, 9, 10, 11, 23, 24, 4. Under body. Part No 4 5. Shows part No 8.  
6. show parts No 2, 3. 7 shows part No16 , 17 and 17A 8. Rear antennas and gutter rail. Part No 5, 7, 9, 10, 11, 23, 24,

## INSTRUCTIONS:

### PARTS NOT REQUIRED FROM HASEGAWA KIT:

**PLATES NOT REQUIRED:** Plates G,J,E.

**PART No:** Plate B, No 2, 32 ,

Plate C, No 11

Plate L, No 1,2,3,4,5,6,7,8,9,12,13

Plate Q, No 4,5

Plate R, No 2,3,5,6,10,11,17

You will find replacement parts for some of these in the conversion kit.

1. When cutting out new window, place template 65mm along from Crew door but inline with other windows.
2. Drill out each corner, and then cut along black line with hobby knife until Fully removed to the same size as the black area on the template.

### Gluing Parts onto Kit.

1. Before you start to glue the parts to model it is recommended that you wash all parts in warm soapy water first.
2. When gluing parts on to the model. remember to ruffian up the glue Surface first with a piece of wet and dry paper. To assure that parts are glue properly to the surface.
3. When gluing you may use you're normal modeling glue or Zap (Super Glue)

We hope that you enjoy this kit and if you have any questions please don't hesitate to contact us.

We would like to thank:

817 squadron and Tony Gallen for there help in the production of this conversion kit.



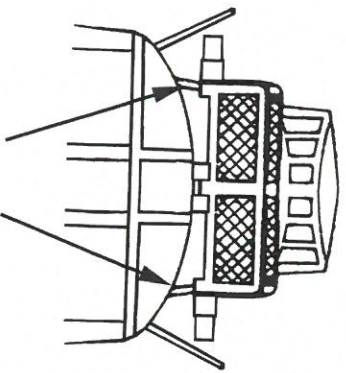
A MEMBER OF

**MODEL ALLIANCE**

GROUP

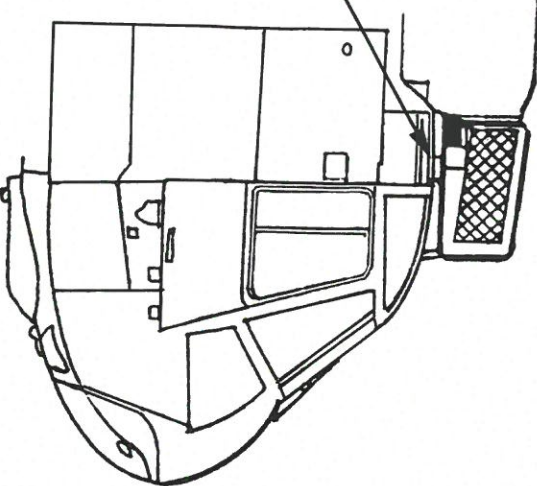
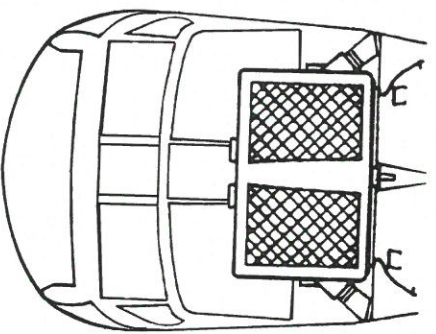
# SEA KING SAND FILTER INTAKE BOX

**FRONT VIEW**

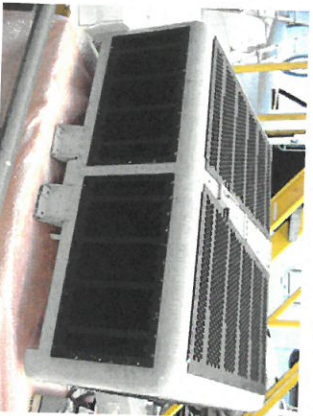


GLUE PLASTIC STRIP  
ON BOTH SIDES HERE

**TOP VIEW**

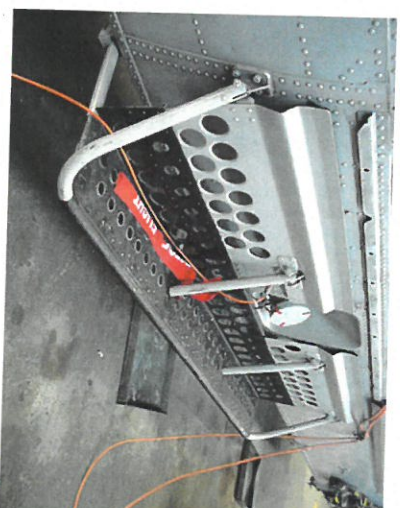


**SIDE VIEW**

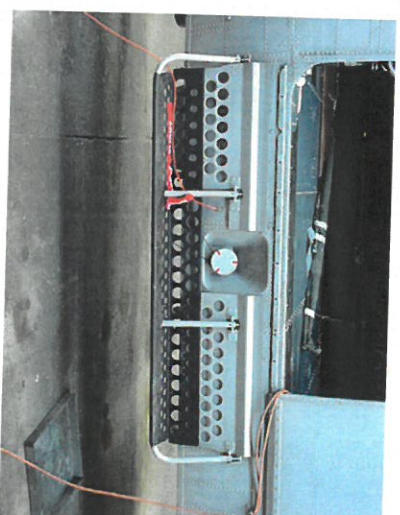


# RAN SEAKING CARGO STEP ASSEMBLY

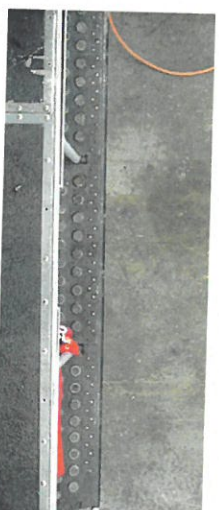
1. When assembling the step  
glue part No 10 on first.



2. When gluing part No 9 on  
make sure that it sits on the  
inner edge of part No 10.



3. Glue streightning bars on  
as per Photo's. Parts No 11



# CONVERSION PART PAGE FOR RAN SEAKING 1990s

