

HH-60H Rescue Hawk



The HH-60H Rescue Hawk is a variant of the SH-60F Seahawk developed in 1986 for combat search and rescue (CSAR) and Naval Special Warfare (NSW) missions. It is the USN's all-weather, twin engine combat rescue helicopter capable to operate from a wide range of platforms including destroyer, cruiser, aircraft carrier, fast combat support ship and other USN vessels.

Configured to retrieve downed aviators behind the enemy lines, the HH-60H was packed with the SH-60F's core avionics with a range of special defensive equipment. These include door-mounted weapons such as GAU-17 7.62mm miniguns to suppress enemy fire at rescue operations; Missile Warning System and Infrared Jammer to counter hostile missiles; and the Forward Looking Infrared Radar (FLIR) to track surface vessels.

Rescue crews of the HH-60H comprise two pilots and two sensor operators, one of whom is a qualified SAR swimmer specialized in search and rescue operation. With the night vision capable cockpit, the HH-60H pilots can fly the helicopter at the darkest night at minimum risk of detection by enemy radars, allowing the Rescue Hawk to stand ready for critical missions, be it day or night.

H1	1	White
H2	2	Black
H4	4	Yellow
H8	8	Silver
H52	12	Olive Drab
H18	28	Steel
H83	32	Dark Gray

H12	33	Flat Black
H90	47	Clear Red
H50	50	Clear Blue
H80	54	Dark Green
H76	61	Brunt Iron
H42	72	Intermediate Blue
H28	78	Metal Black

H338	338	Gray FS36495
H306	306	Gray FS36270
H307	307	Gray FS36320
H308	308	Gray FS36375

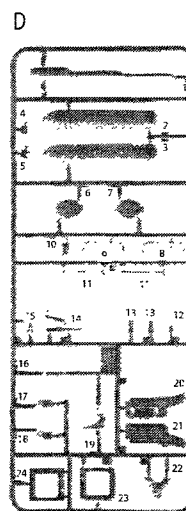
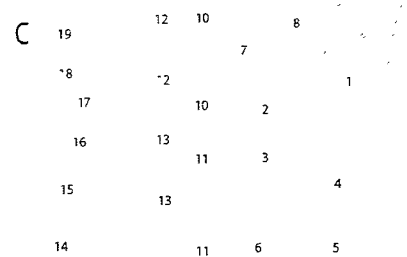
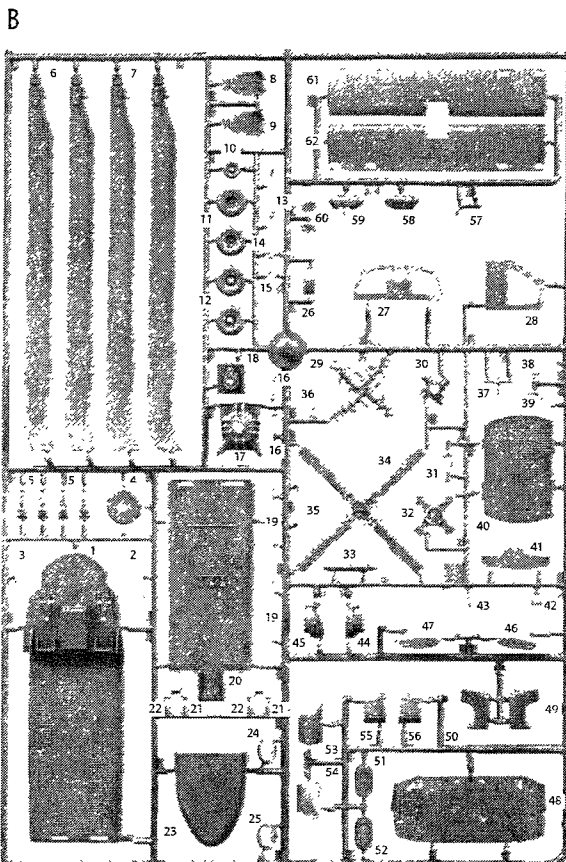
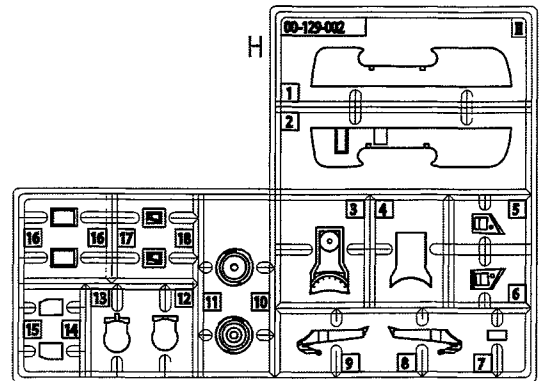
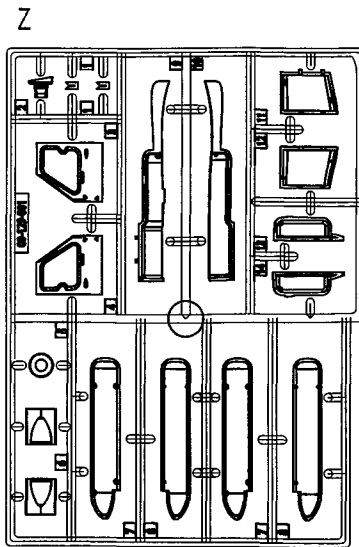
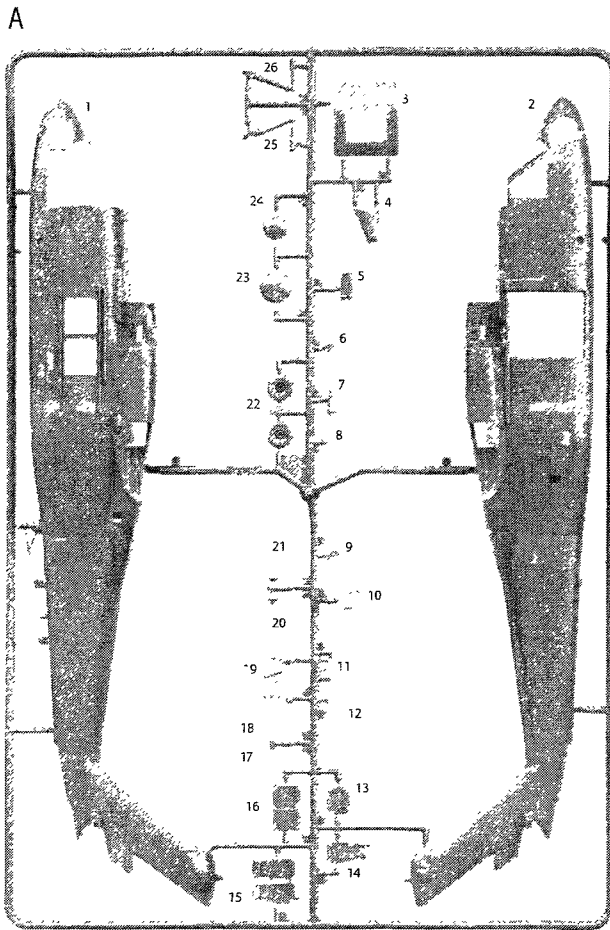
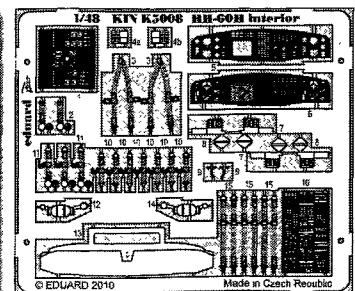


Photo-etched Parts

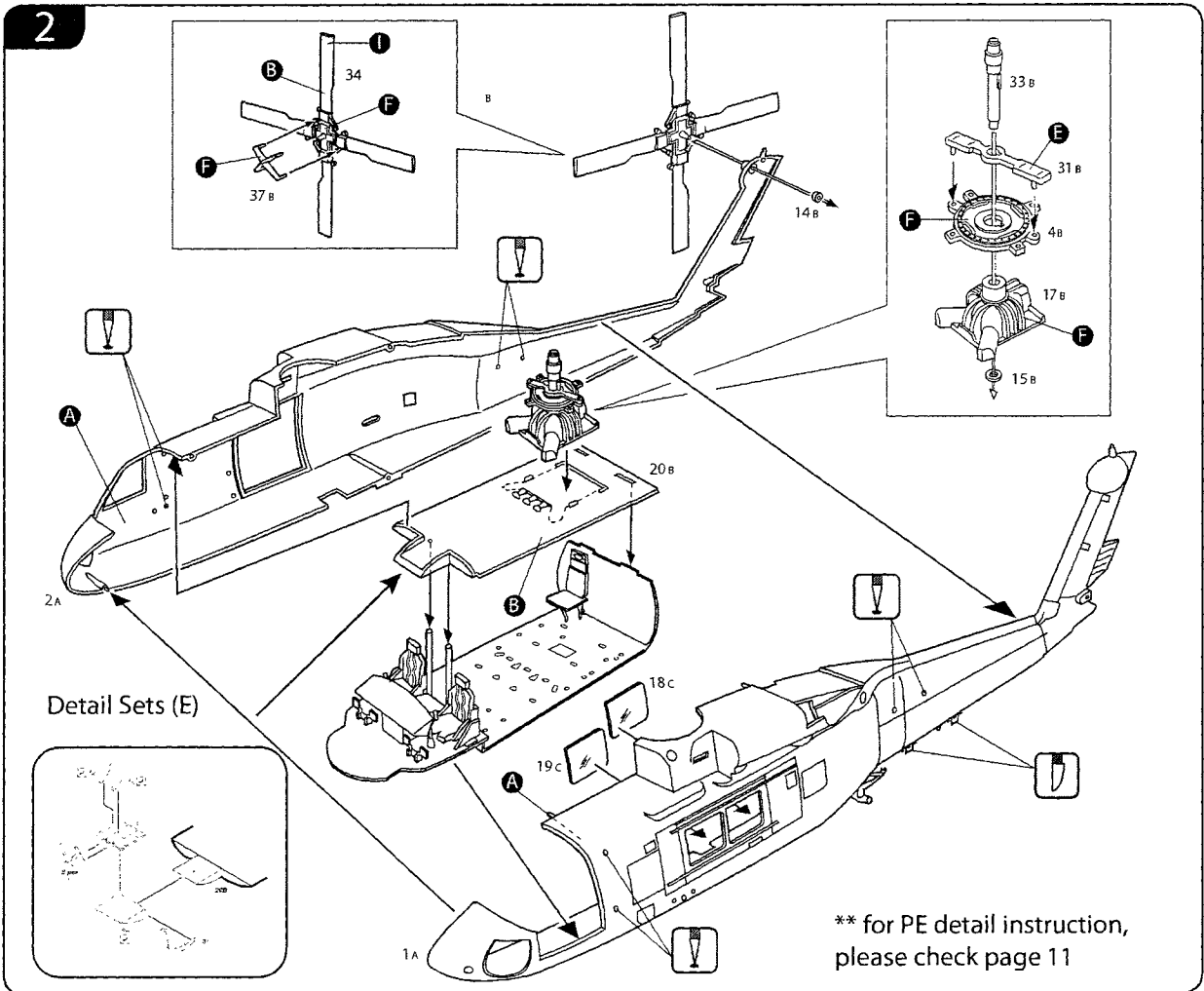
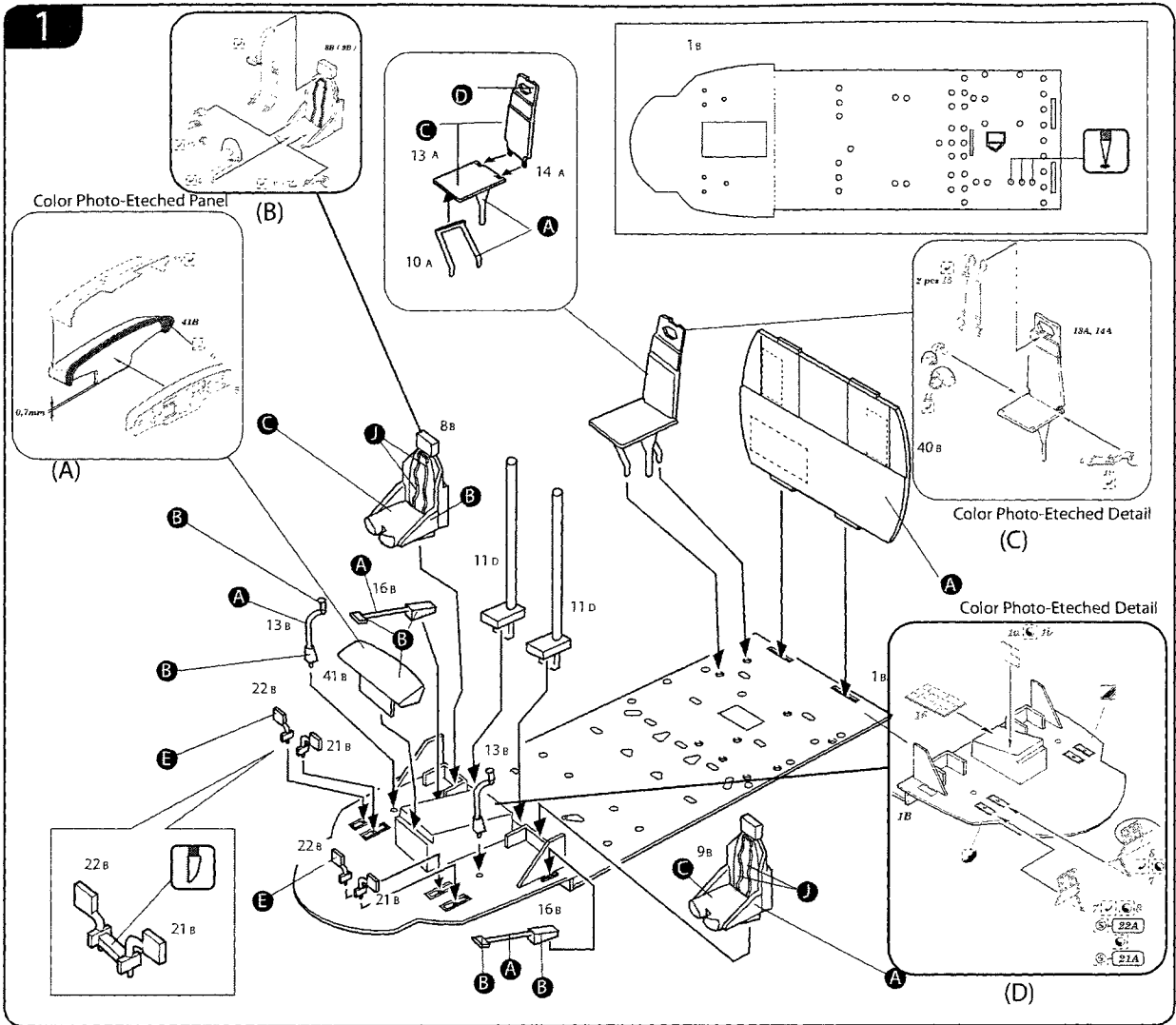


AFTERMARKET SERVICES CARD

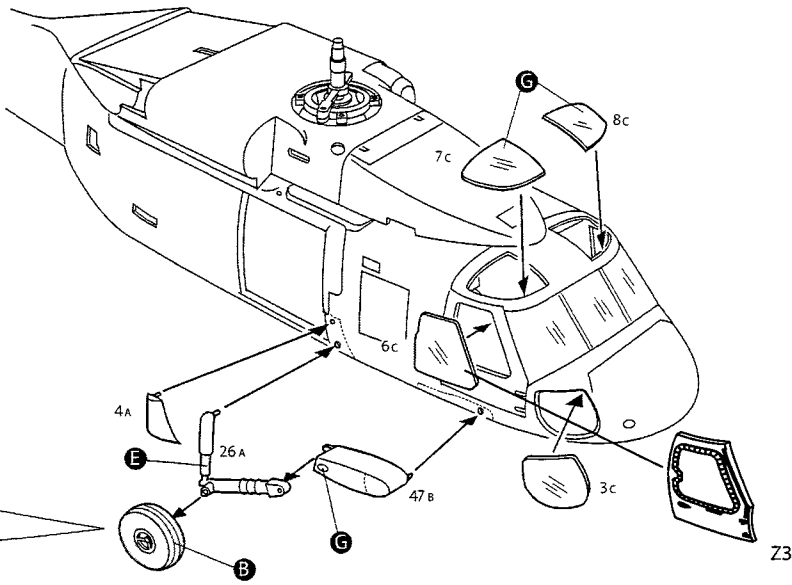
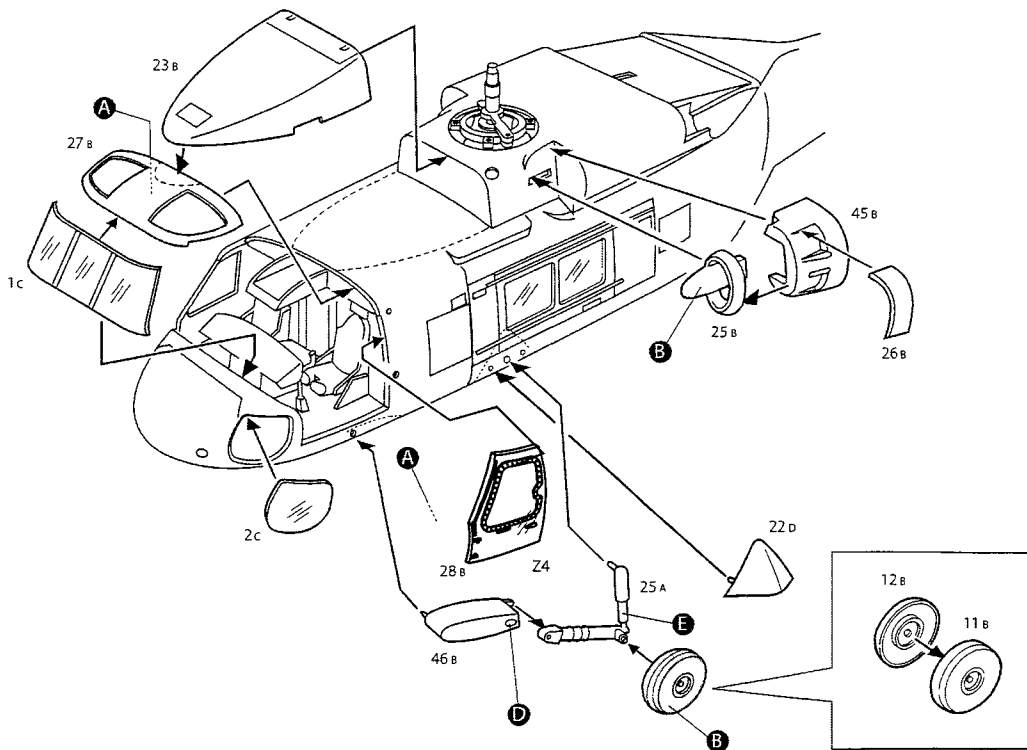
When requesting replacement parts, please take or send this form to your local dealer so that the parts required can be correctly identified. Please note that specifications and availability are subject to change without notice.

For more information, please contact info@skunkmodelworkshop.com or visit <http://www.skunkmodelworkshop> for latest information.

Parts Code	Item	SW48011
00-129-001	Z	HH-60H/J extended pylon
00-129-002	H	HH-60H FLIR PARTS
	A	Body parts
	B	Rotor and interior parts
	C	Clear Parts
	D	HH-60H parts
01-129-001		1/48 HH-60H Decal Sheet
K50008		1/48 HH-60H PE PARTS

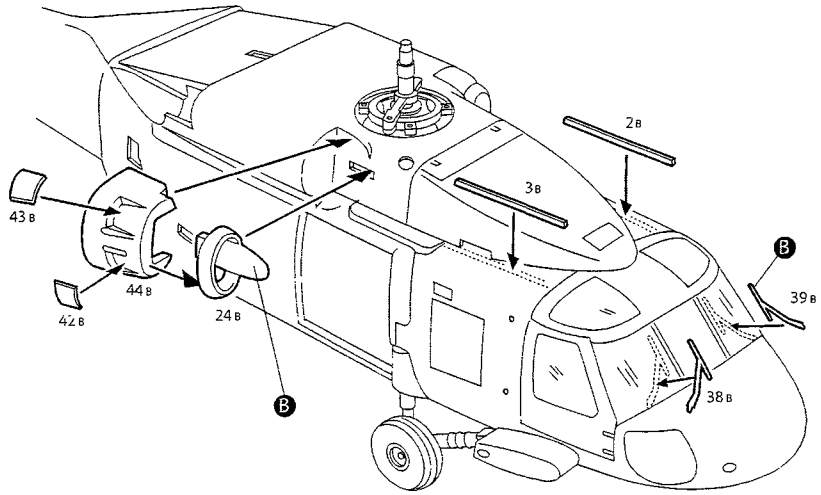


3

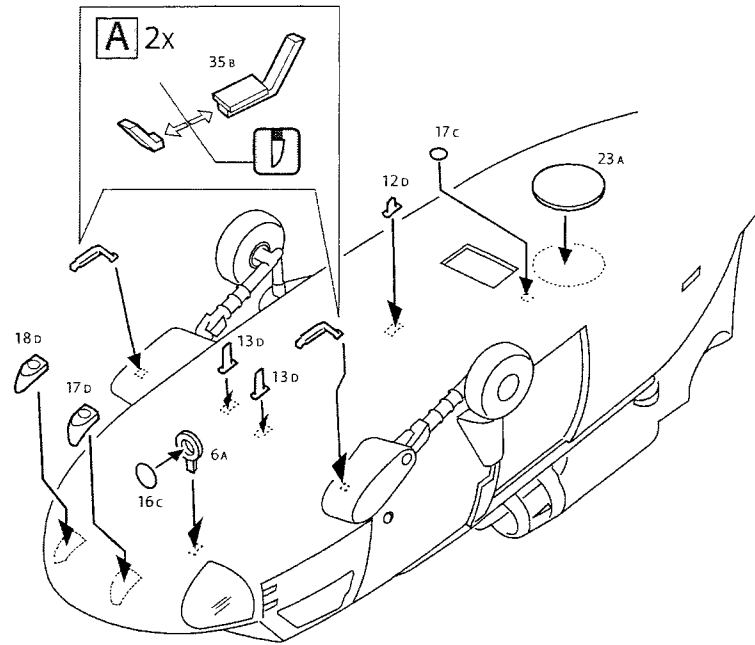


** optional changes to the door, but need to cut the original door plastic from the fuselage

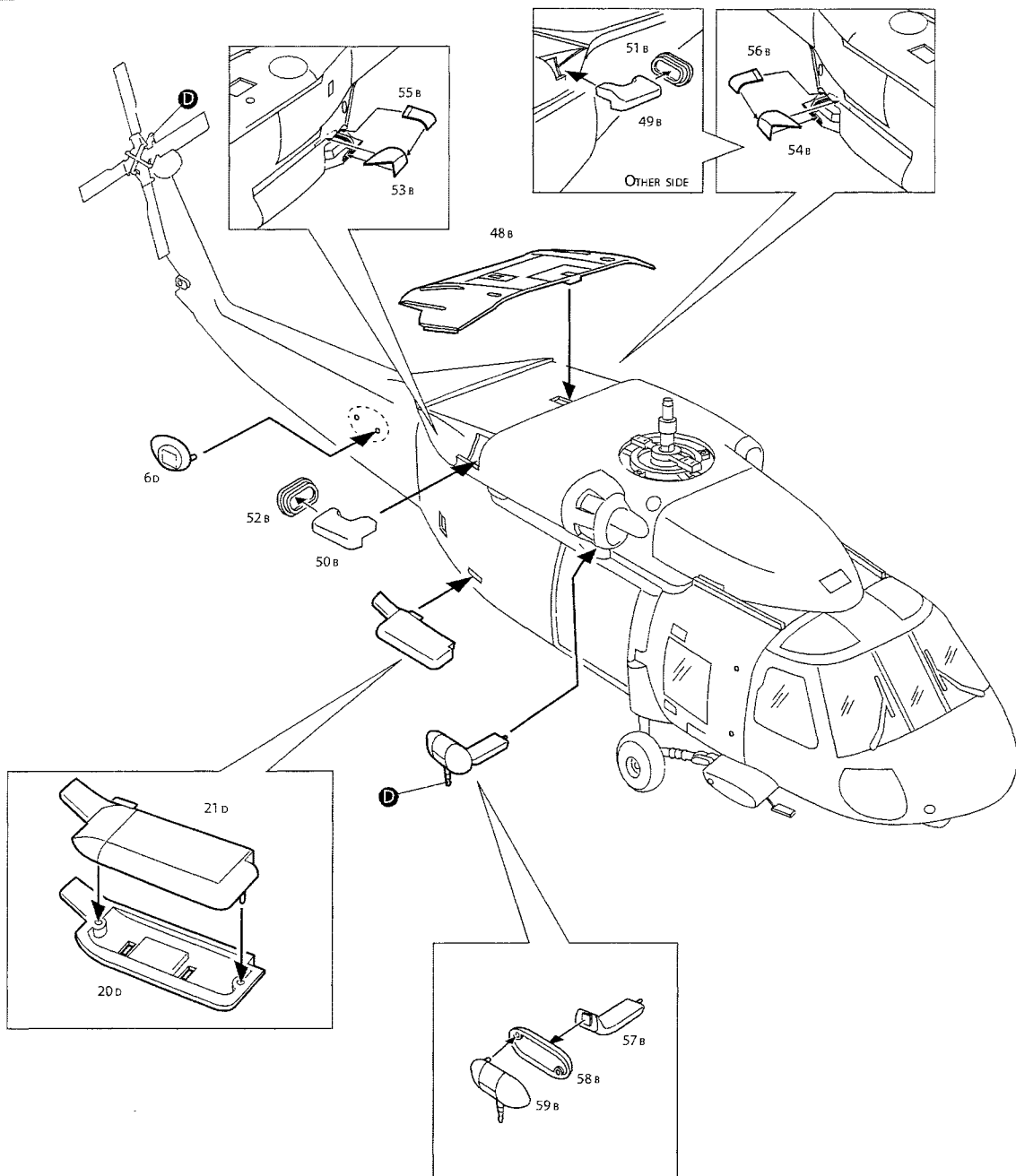
4

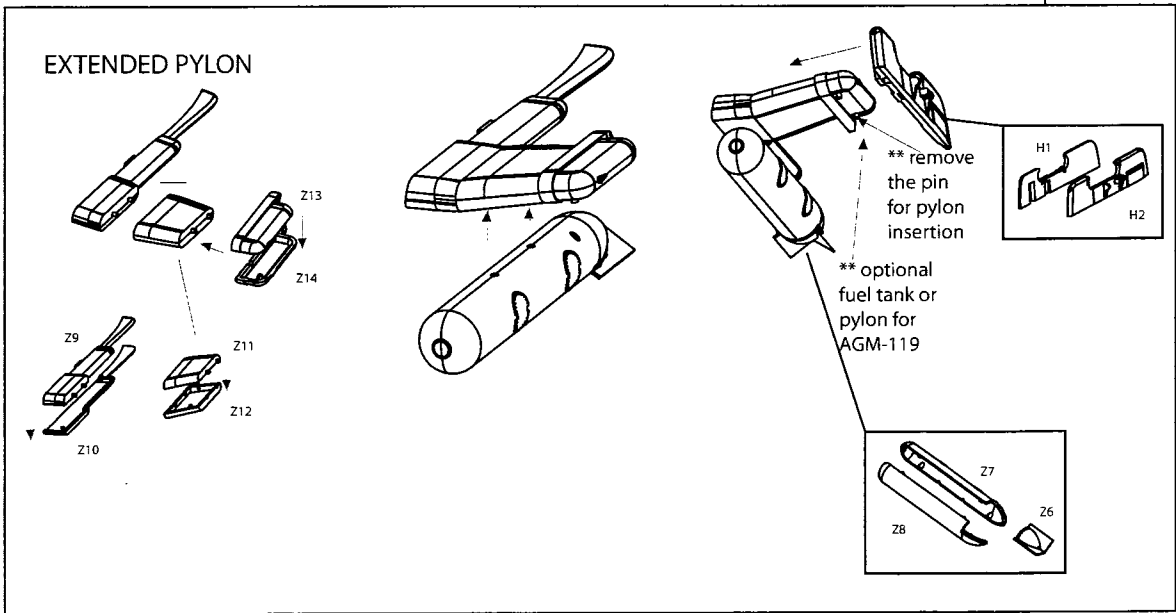
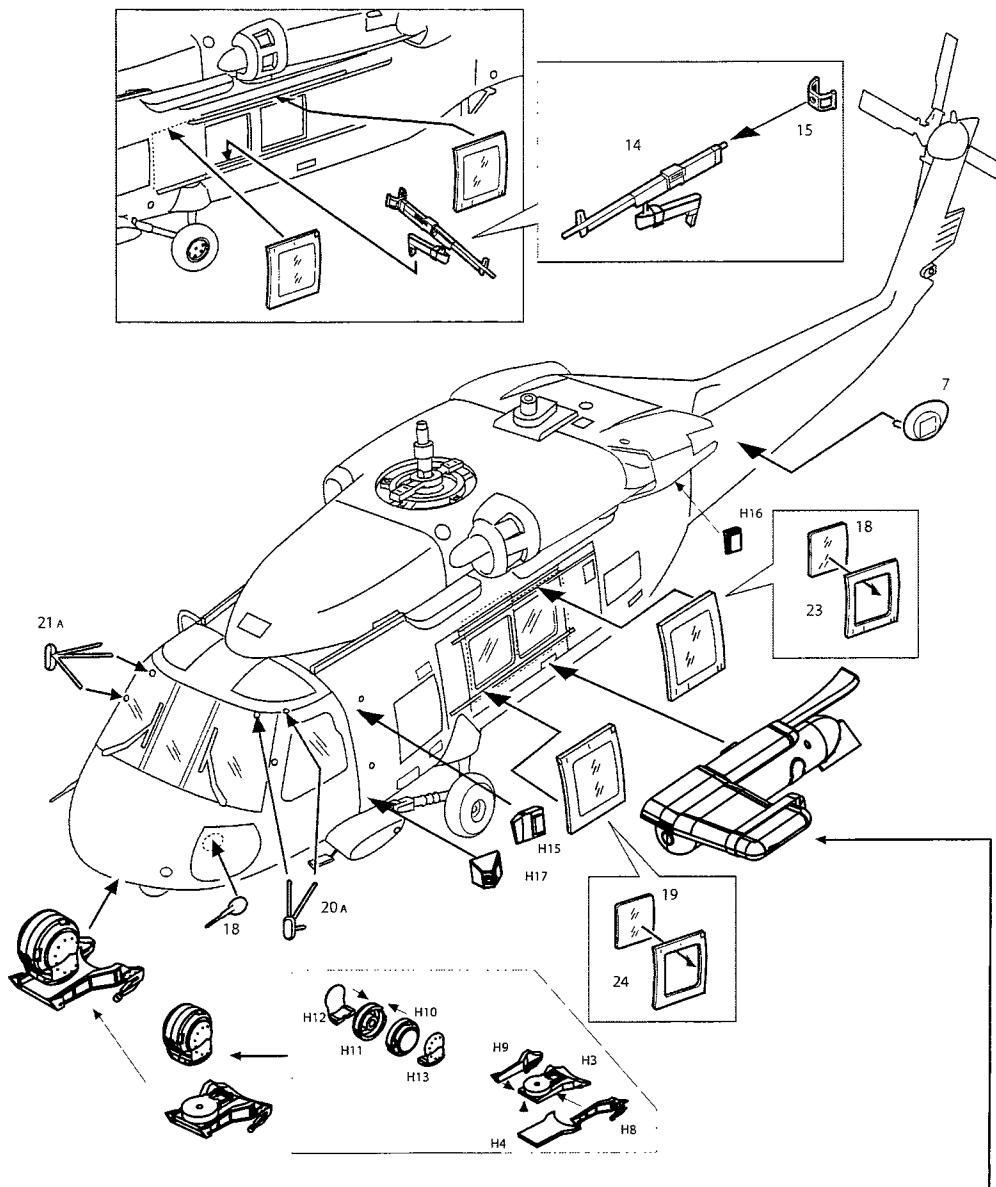


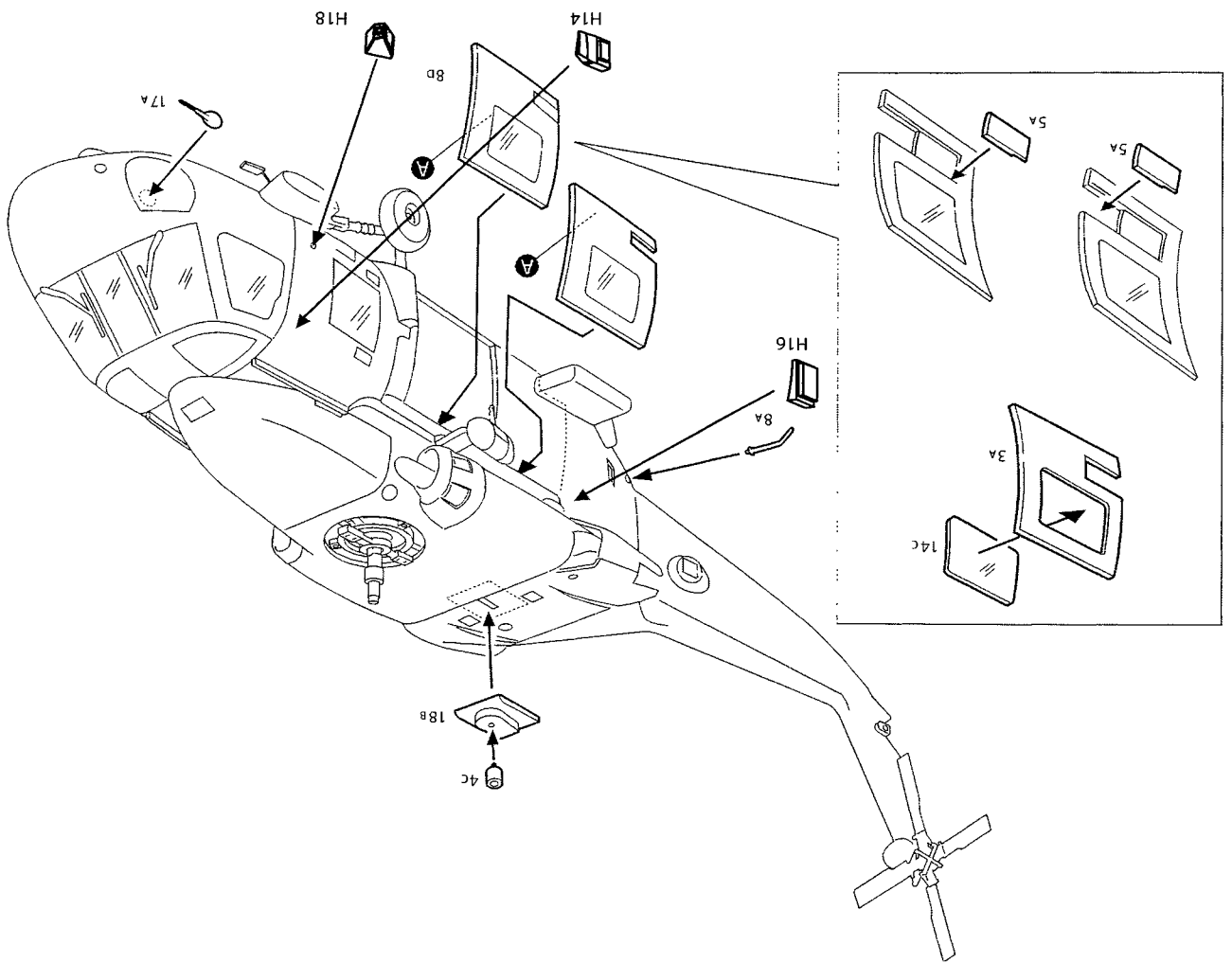
5



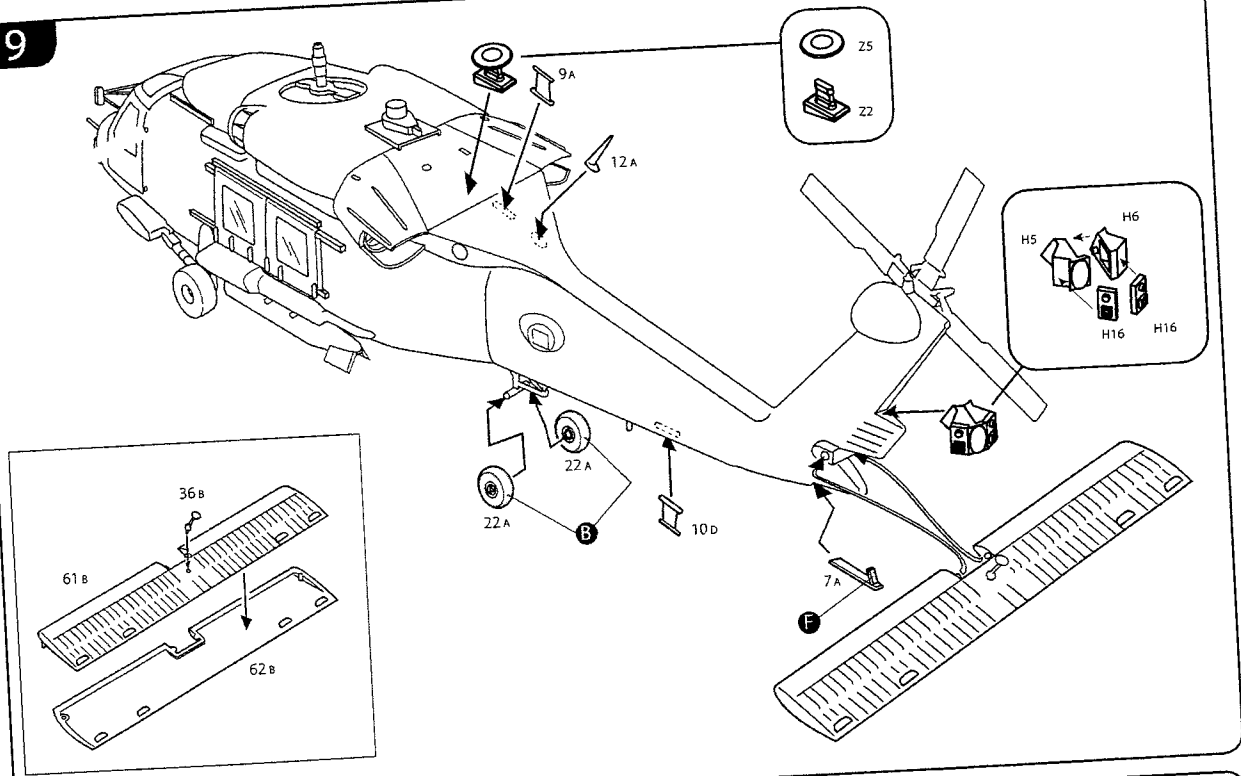
6



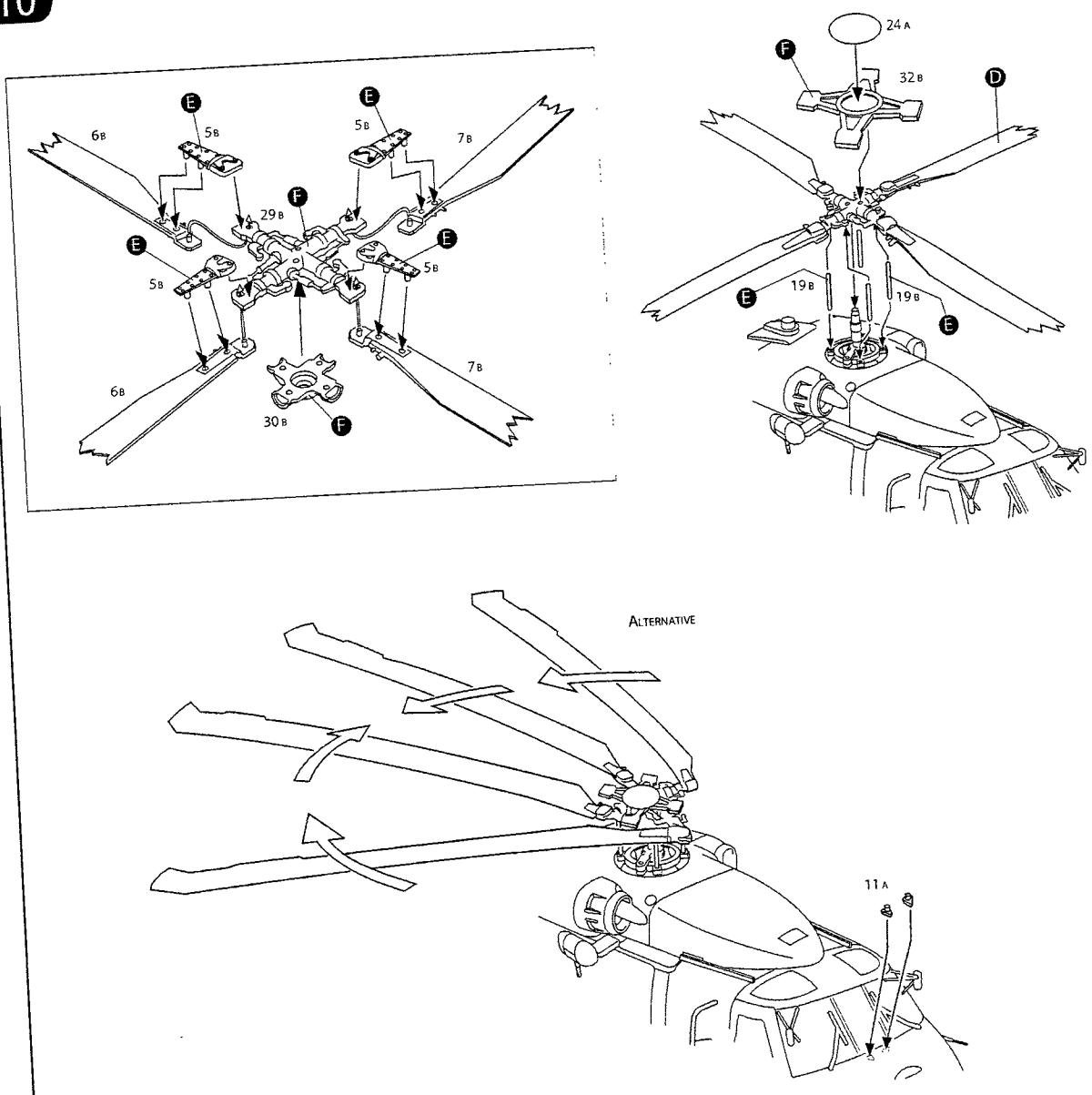




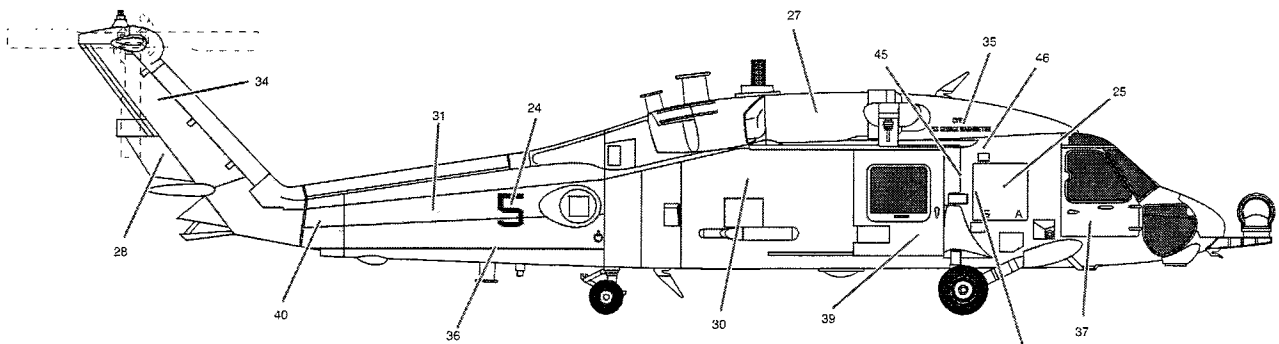
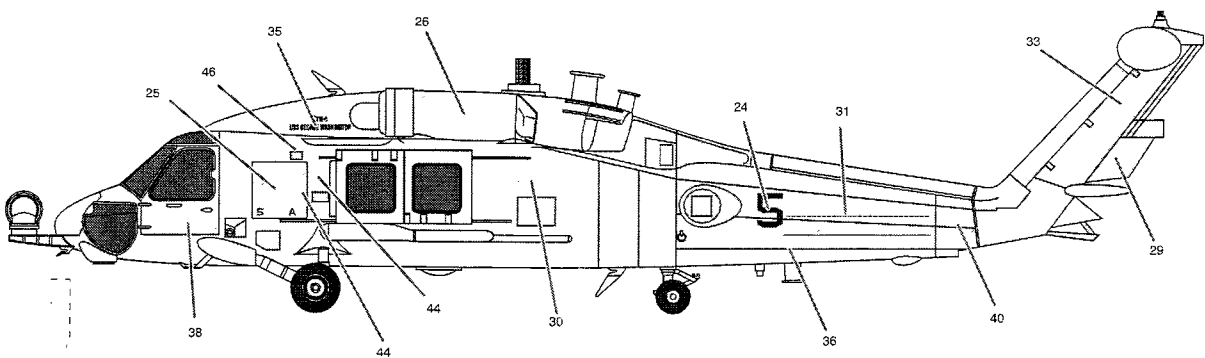
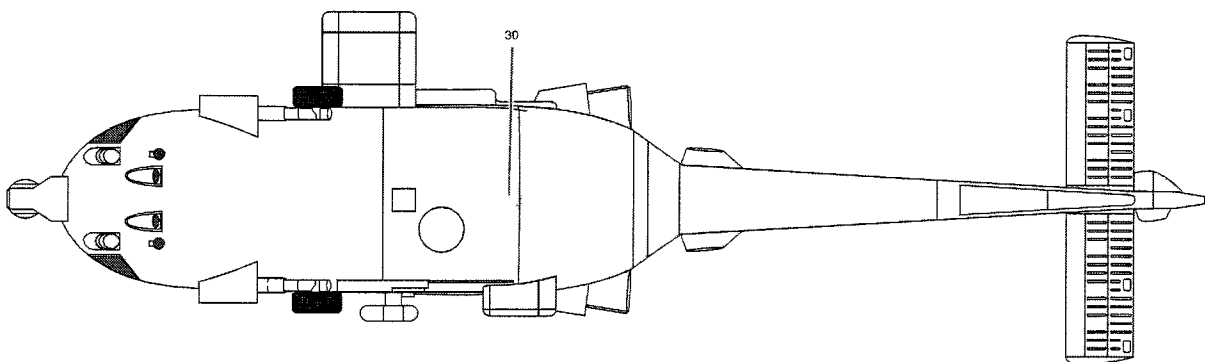
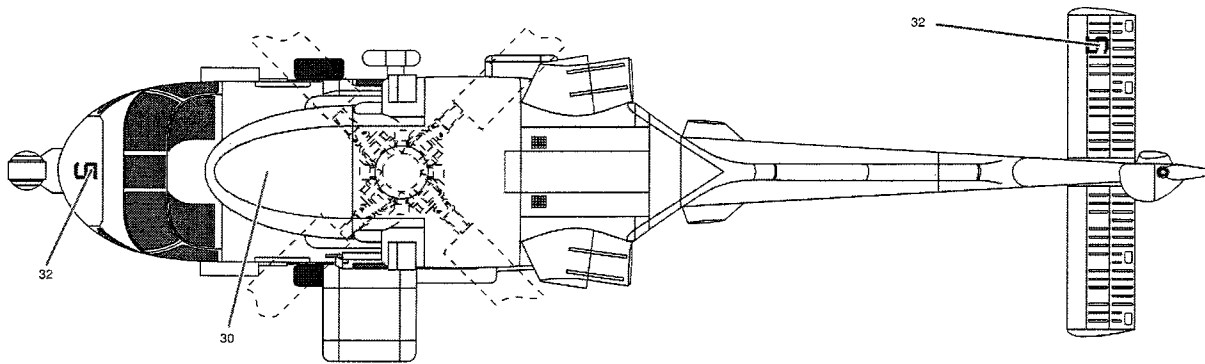
9



10

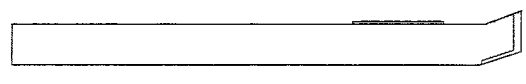
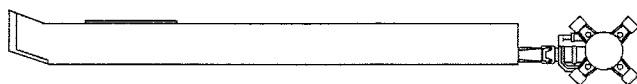


HH-60H NF-615 (163786), HS-14 "CHARGERS", CVW-5, USS GEORGE WASHINGTON, 2009.

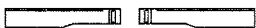


MAIN ROTOR TOP

MAIN ROTOR BOTTOM

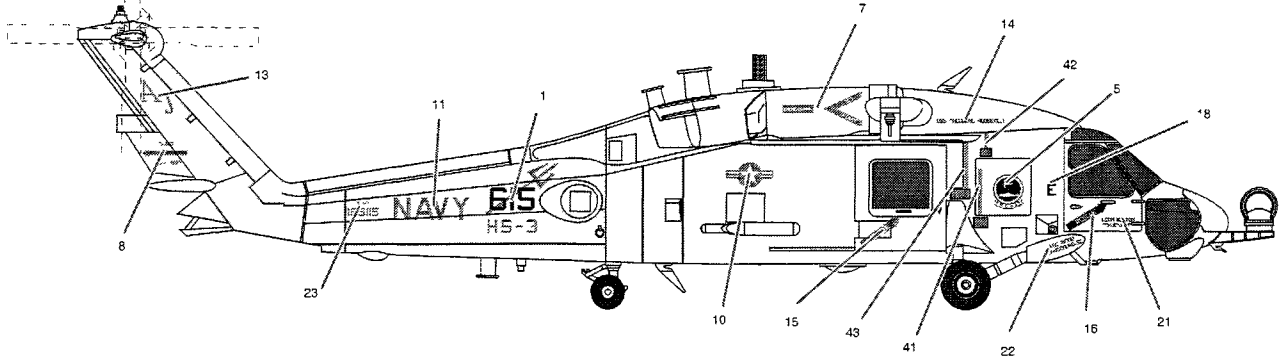
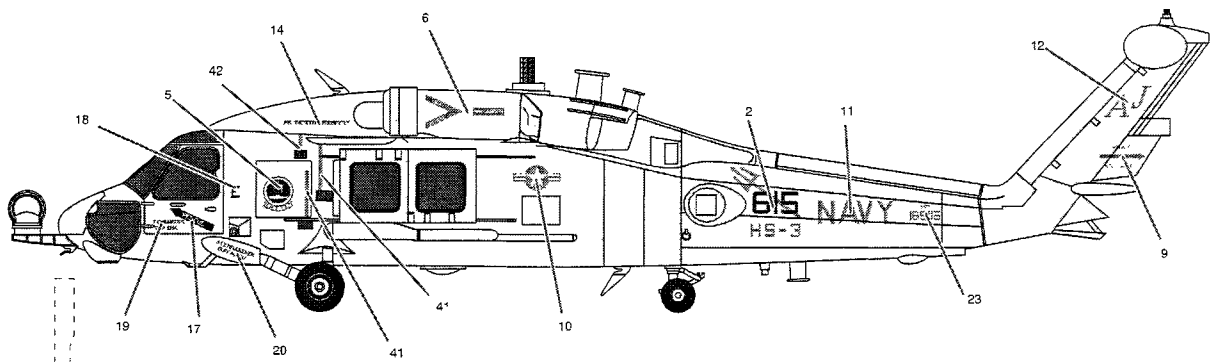
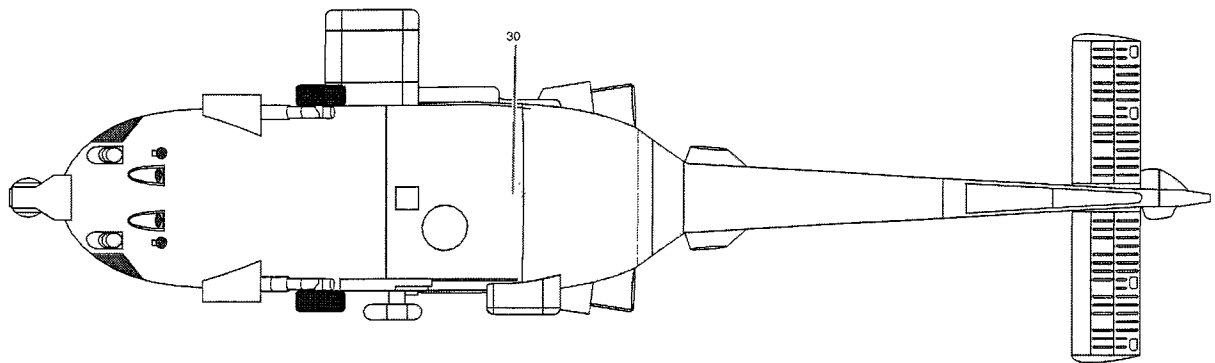
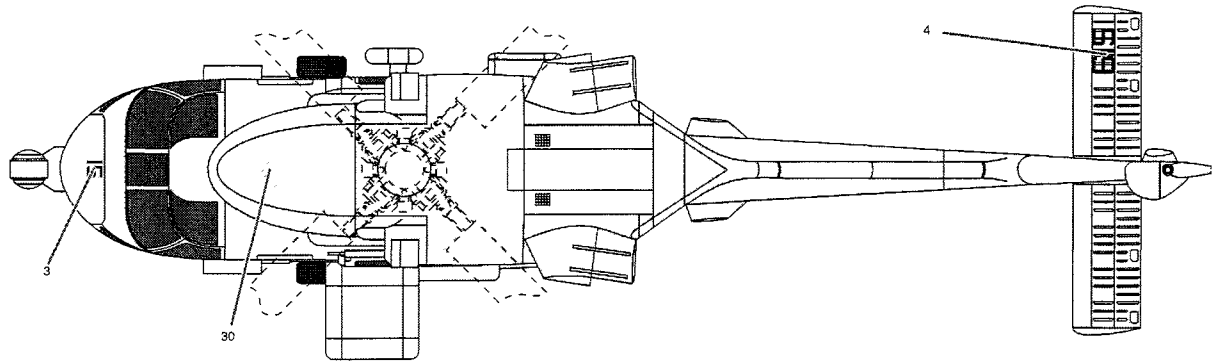


TAIL ROTOR BOTH SIDES



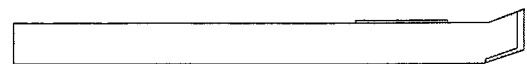
- LIGHT GHOST GRAY FS 36495 (HUMBROL 127 / MODELMASTER 1728 / GUNZE 308)
- LIGHT GRAY FS 36495 (HUMBROL 147 / MODELMASTER 1732 / GUNZE 338)

HH-60H AJ-615 (165115), HS-3 "TRIDENTS", CVW-8, USS THEODORE ROOSEVELT, 2009.

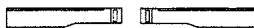


MAIN ROTOR TOP


MAIN ROTOR BOTTOM



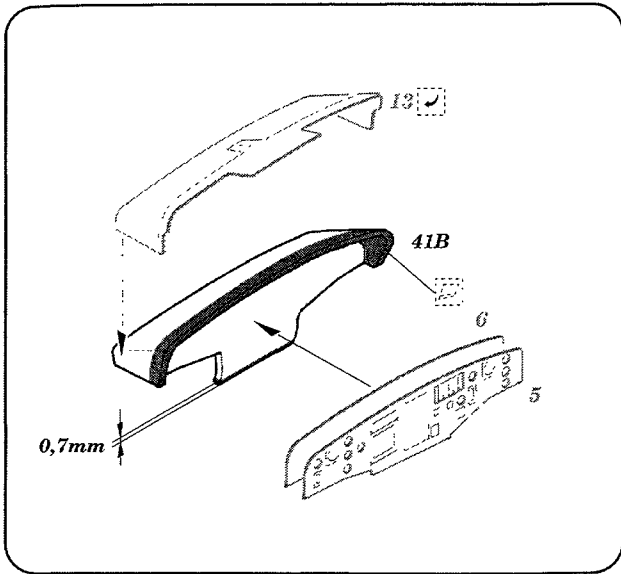
TAIL ROTOR BOTH SIDES



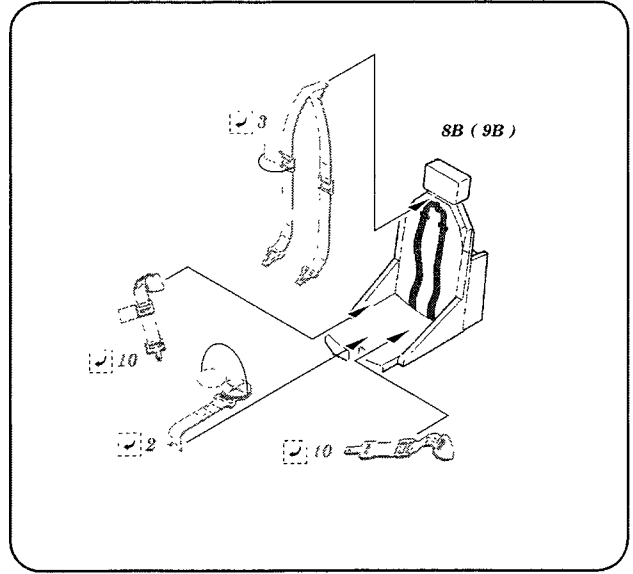
 LIGHT GHOST GRAY FS 36495 (HUMBROL 127 / MODELMASTER 1728 / GUNZE 308)

 LIGHT GRAY FS 36495 (HUMBROL 147 / MODELMASTER 1732 / GUNZE 338)

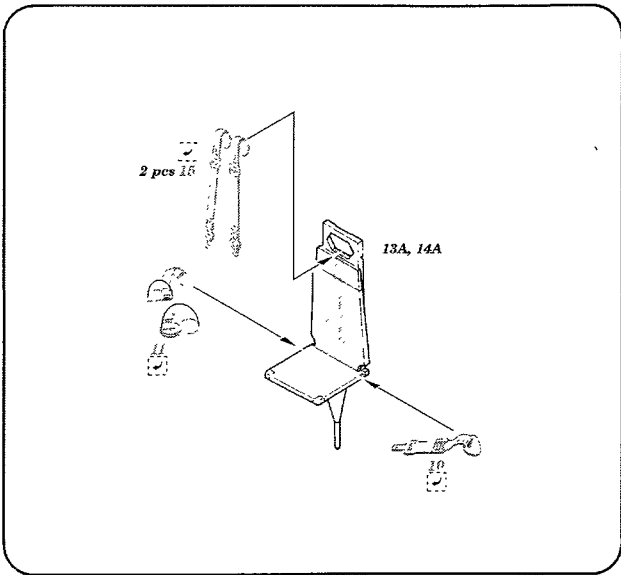
Detailing Sets Installation



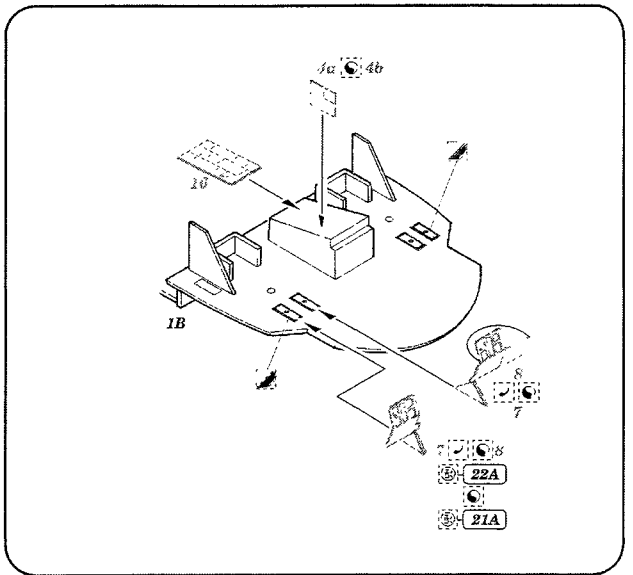
A



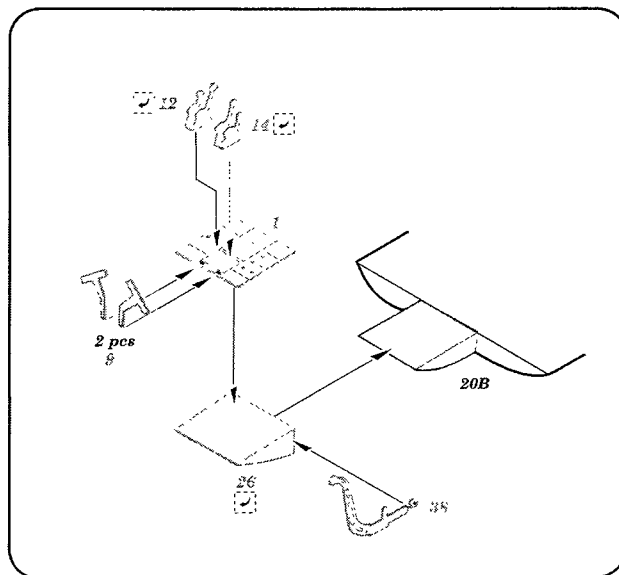
B



C



D



E