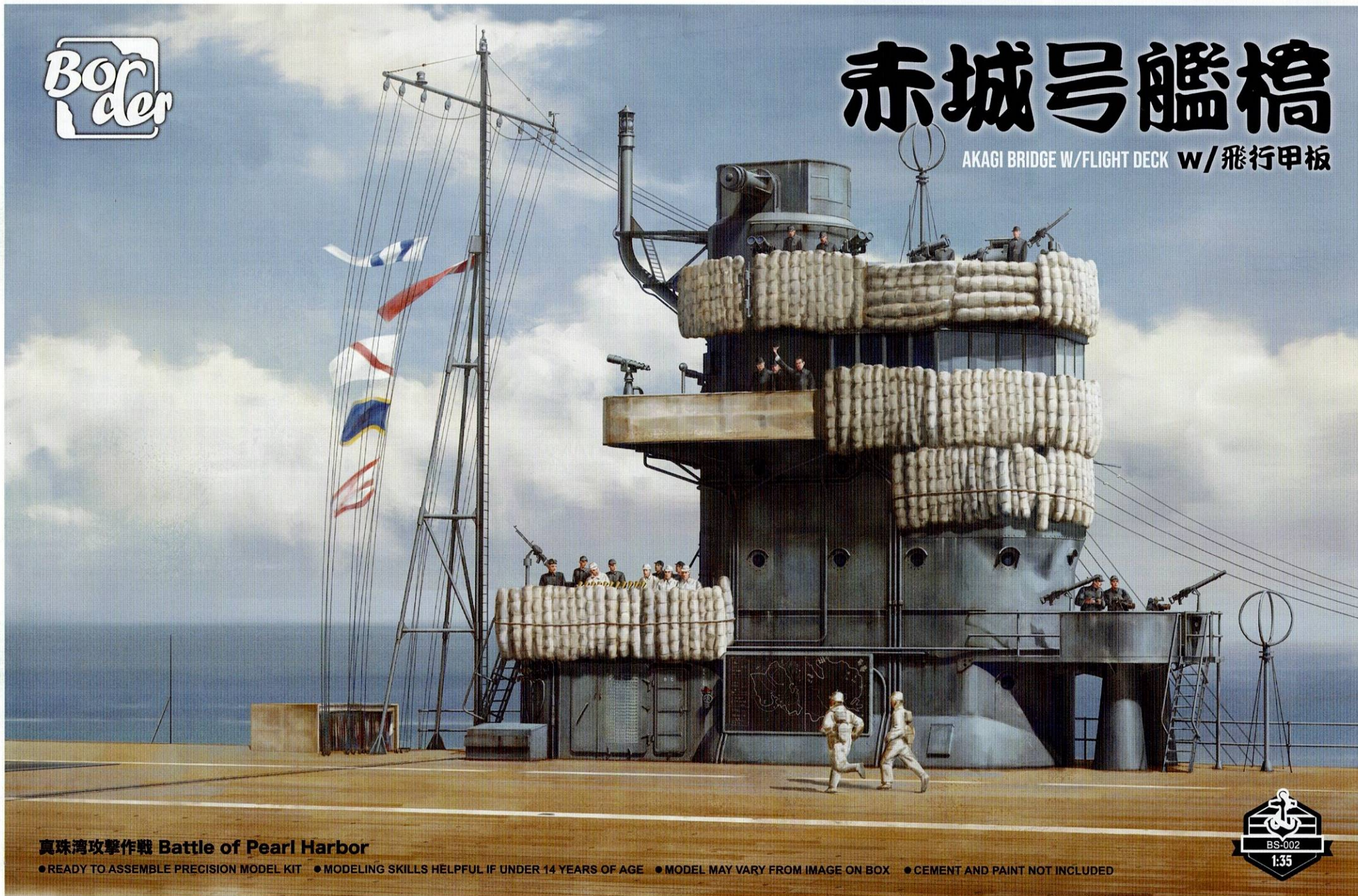


Border

# 赤城号艦橋

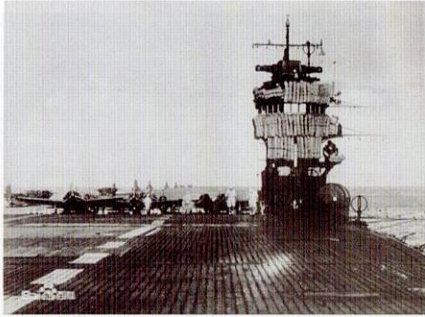
AKAGI BRIDGE W/FLIGHT DECK w/飛行甲板



真珠湾攻撃作戦 Battle of Pearl Harbor

● READY TO ASSEMBLE PRECISION MODEL KIT ● MODELING SKILLS HELPFUL IF UNDER 14 YEARS OF AGE ● MODEL MAY VARY FROM IMAGE ON BOX ● CEMENT AND PAINT NOT INCLUDED





## History | 历史介绍

## AKAGI BRIDGE W/FLIGHT DECK

### 突袭珍珠港

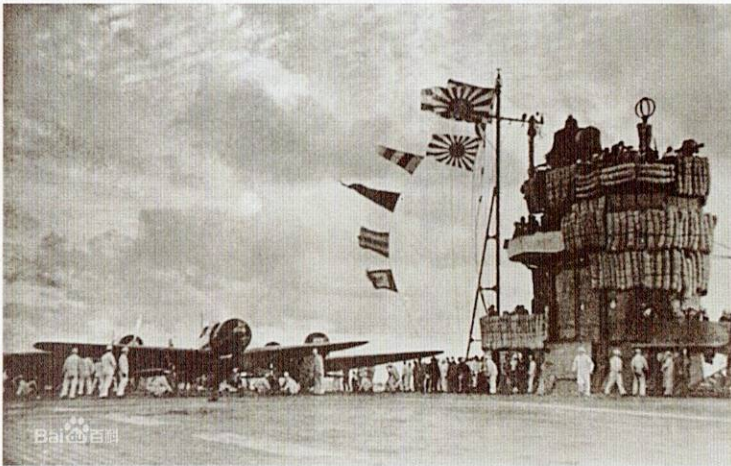
1941年12月7日早晨，珍珠港事件爆发，偷袭珍珠港的是日军航空母舰编队。由中将南云忠一率领的由6艘航母组成的日本航空母舰编队在12月6日到达了预定海域。南云忠一的旗舰就是赤城号航空母舰，其就在赤城号的指挥室里下达了攻击命令。

6时15分，南云忠一命令第一攻击波出动。由空中指挥官渊田中佐直接指挥的49架水平轰炸机首先从“赤城”号航母起飞，接着共有183架战斗机、轰炸机、鱼雷攻击机分别从6艘日本航母上起飞，编队完毕后飞向珍珠港。第一波攻击编队机群，由空中指挥官渊田中佐驾驶战机飞在最前面，其身后是由49架水平轰炸机、40架鱼雷攻击机、51架俯冲轰炸机、43架零式战斗机组成的。

7时40分，日军第一攻击波编队机群飞到了珍珠港上空，开始偷袭珍珠港。俯冲轰炸机拉开距离，对着珍珠港内的机场、航空站进行俯冲投弹。美军机场、机场上停着的战机被摧毁。接着，第一攻击波编队机群中的水平轰炸机、鱼雷攻击机对停泊在珍珠港内的战列舰和其他军舰进行轰炸。日军的零式战斗机由于没有空中作战对象，开始对美军地面目标进行扫射。第一攻击波结束后，又进行了第二攻击波的攻击。第二波攻击编队机群的171架也是从6艘日本航母上起飞的，第二攻击波的攻击持续了一个多小时，使得美国太平洋舰队几乎全军覆没，太平洋战争的战火由此燃烧起。随后赤城号作为日本第一航空舰旗舰参与太平洋战争，率领日本航空舰队向西扫荡南太平洋至印度洋海域，在拉宝尔攻略战、达尔文空袭、印度洋海战中均获得胜利，并在锡兰外海16投16中，打出了日本海军航空兵舰载俯冲轰炸机的最高纪录。

### 中途岛战

1942年6月5日中途岛海战中，赤城号航空母舰亦作为第一机动部队旗舰的身份参战。10时20分，赤城号遭美国海军3架跟踪返航的“岚”号驱逐舰而来的SBD式俯冲轰炸机（来自美军企业号航空母舰CV-6轰炸机分队）投下其中2枚炸弹的打击，一枚命中了中部升降机附近并贯穿飞行甲板于机库引爆；另一枚则是近失弹，擦过舰艉后方甲板并破坏了舵机。当时机库内正在进行舰上攻击机的加油与将陆军炸弹改换装舰炸弹的挂弹作业，炸弹带来的连锁爆炸使得舰上火灾失控，但是火灾并未蔓延到赤城的下部结构，因此火灾于中午12点一度已被控制，由于航空汽油着火，赤城号上的状况持续恶化。6月5日19点20分，赤城舰长下达全体撤离命令，全员离舰后赤城号仍然浮在海面上。6月6日2点55分，联合舰队司令长官山本五十六下达终止中途岛作战命令，并要求赤城自沉。自沉任务交由日军驱逐舰队执行，分别为“萩风”、“野分”、“岚”、“舞风”，4艘驱逐舰发射了4枚鱼雷并成功命中3枚，赤城号最后沉没地点位于北纬30度30分、西经178度40分。1942年9月25日，赤城号航空母舰正式除籍。



### Attack on Pearl Harbor

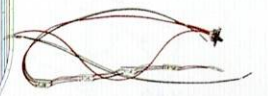
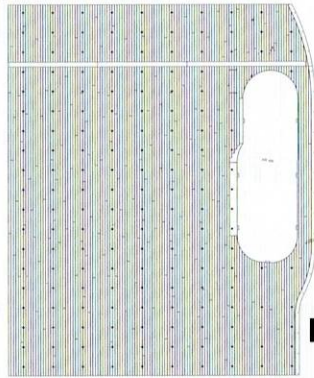
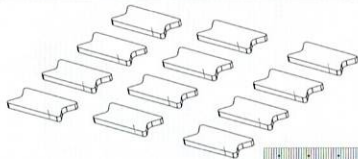
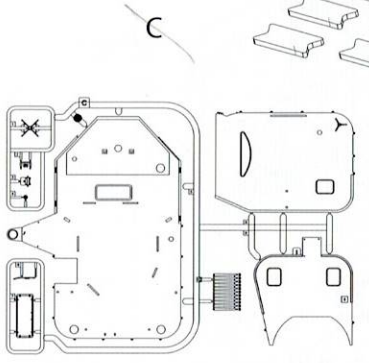
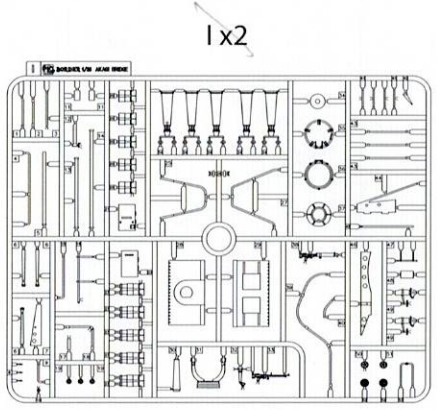
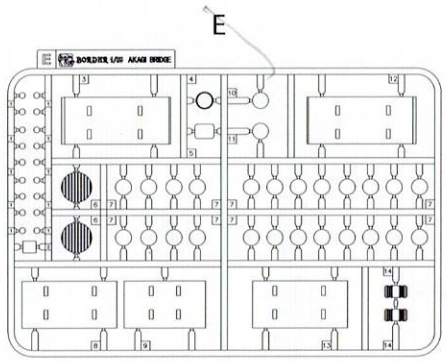
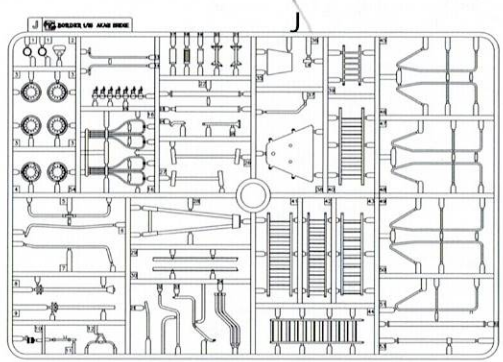
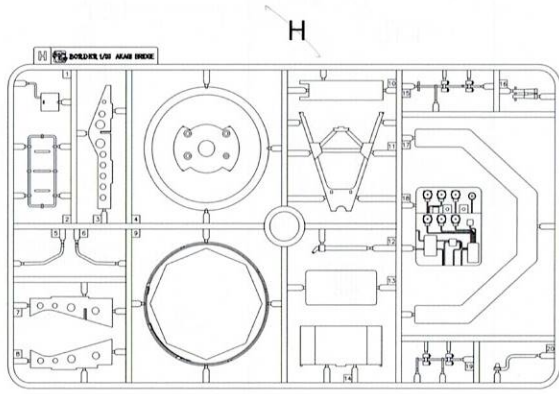
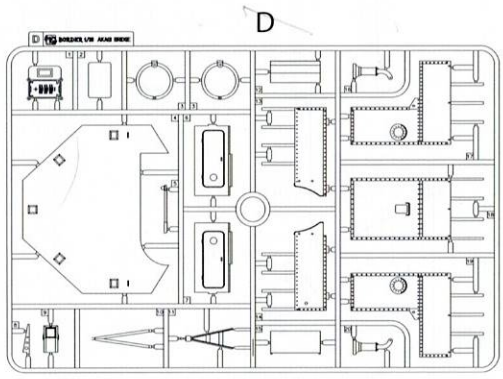
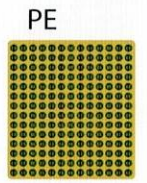
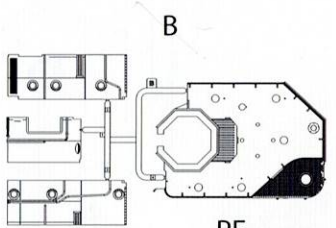
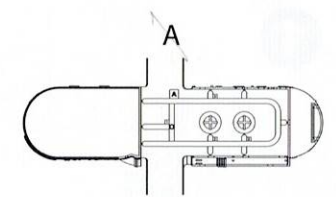
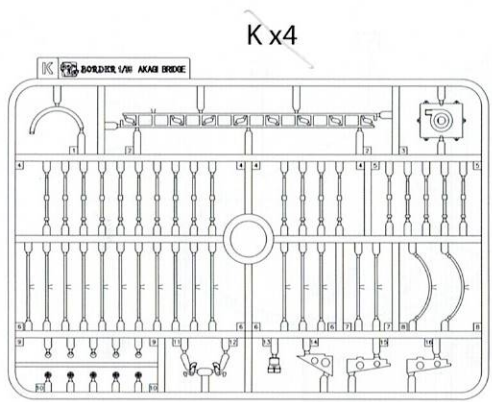
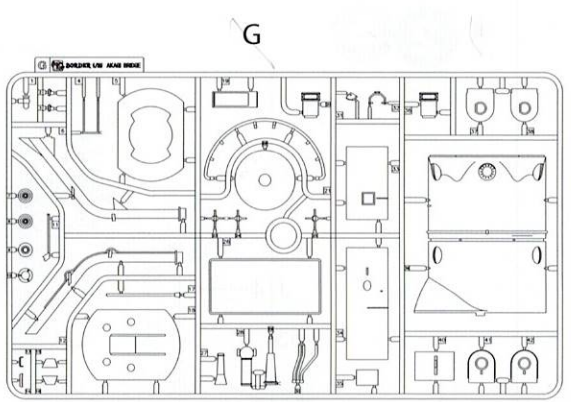
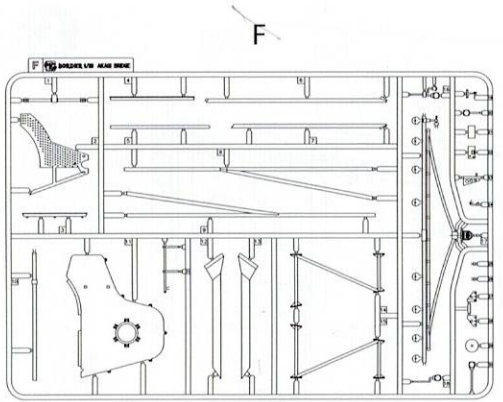
On the morning of December 7, 1941, the Pearl Harbor Incident broke out, and it was a Japanese aircraft carrier formation that attacked Pearl Harbor. Led by Lieutenant General Tadanichi Nagumo, the six-carrier Japanese carrier group arrived at the target area on December 6th. Tadanichi Nagumo's flagship was the carrier Akagi, and he gave the order to attack from the command room of Akagi.

At 0615, Chuichi Nagumo ordered the first attack wave to move out. Forty-nine horizontal bombers under the direct command of Air Commander Lt. Col. Fuchida took off first from the carrier Akagi, followed by 183 fighters, bombers and torpedo planes from each of the six Japanese carriers, and flew toward Pearl Harbor after the formation was completed. The first wave of the attack formation, piloted by Air Commander Fuchida, was in the forefront, followed by 49 horizontal bombers, 40 torpedo attack planes, 51 dive bombers, and 43 Zero fighters.

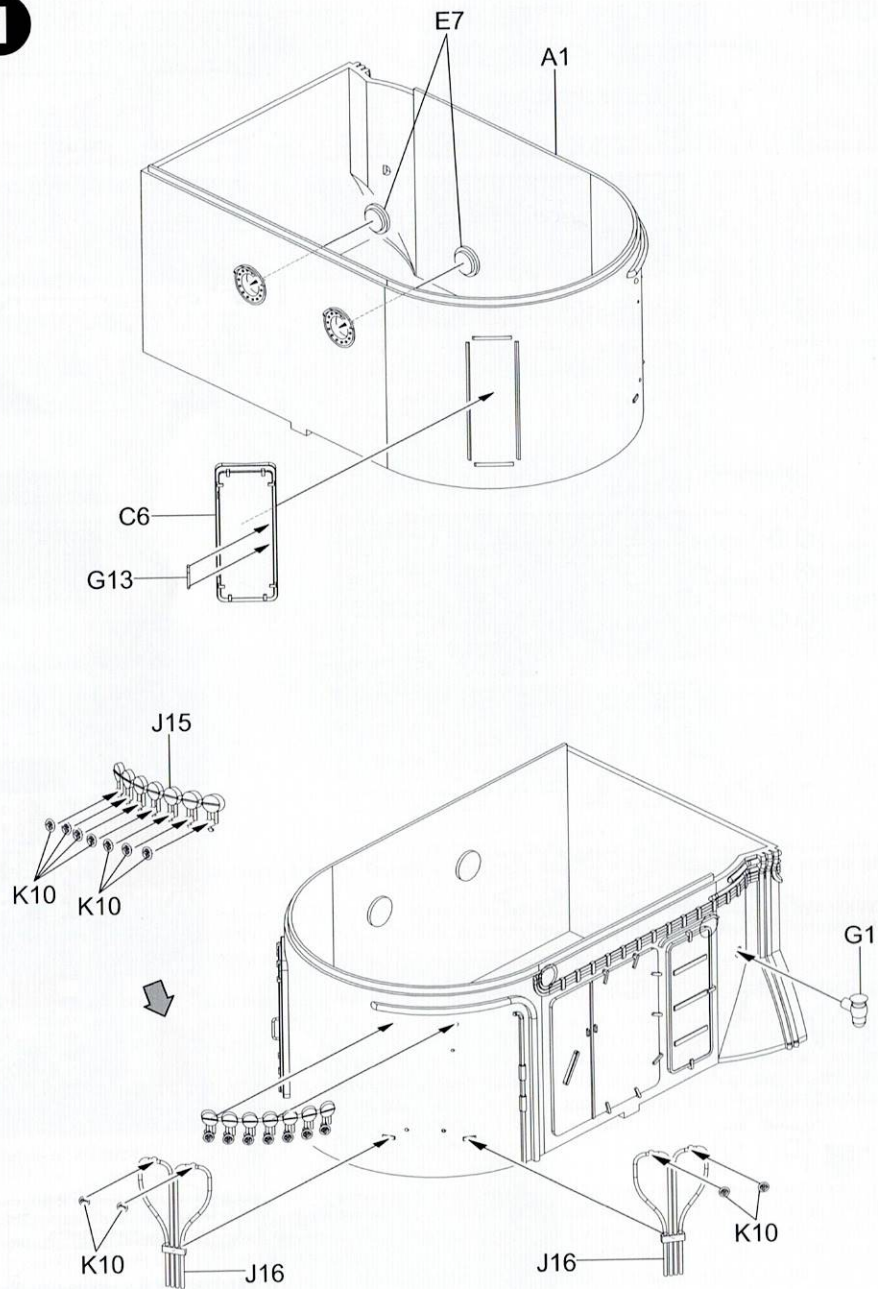
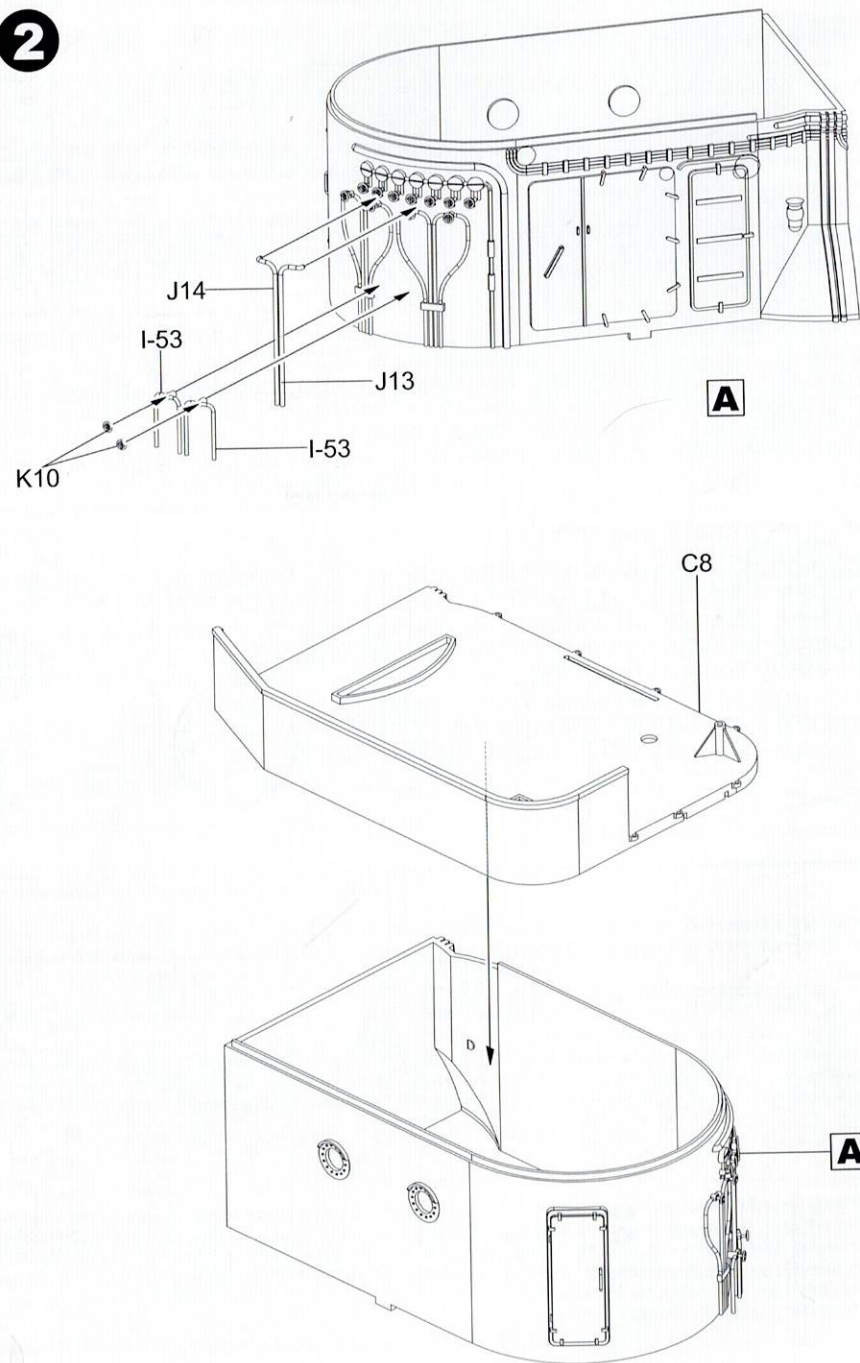
At 0740 hours, the first Japanese attack wave formation group flew over Pearl Harbor and began the sneak attack on Pearl Harbor. The dive bombers pulled back and dive-dropped bombs on airfields and air stations inside Pearl Harbor. American airfields and fighters parked on them were destroyed. Then, the horizontal bombers and torpedo attack planes in the first attack wave formation group bombed the battleships and other warships anchored inside Pearl Harbor. The Japanese Zeros, having no aerial targets to fight against, began strafing American ground targets. The end of the first attack wave was followed by a second attack wave. The 171 planes of the second attack formation group also took off from six Japanese carriers. The attack of the second attack wave lasted for more than an hour, which led to the destruction of almost the entire U.S. Pacific Fleet, and the flame of the Pacific War was thus burned. Then Akagi as the flagship of Japan's first air fleet to participate in the Pacific War, led the Japanese air fleet to the west sweeping the South Pacific to the Indian Ocean waters, in the La Baule Raiders, Darwin air raid, the Indian Ocean sea battles are victorious, and in the Ceylon sea off 16 16, hit the highest record of the Japanese Naval Aviation Navy shipborne dive bombers!

### Battle of Midway

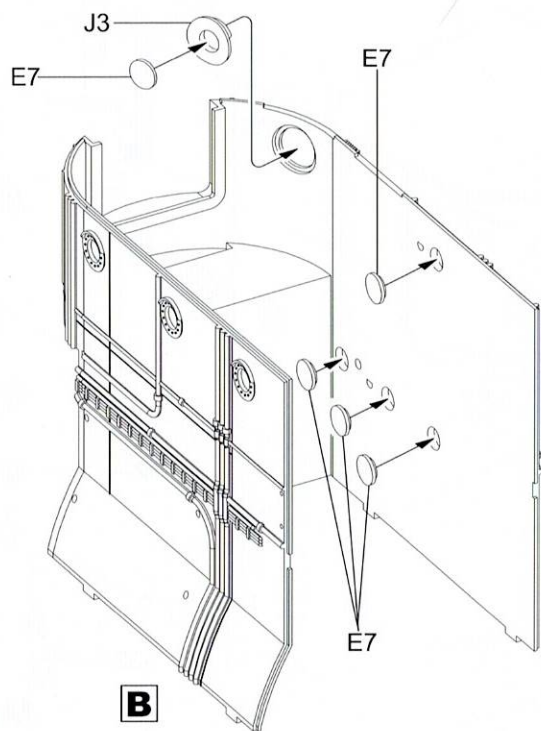
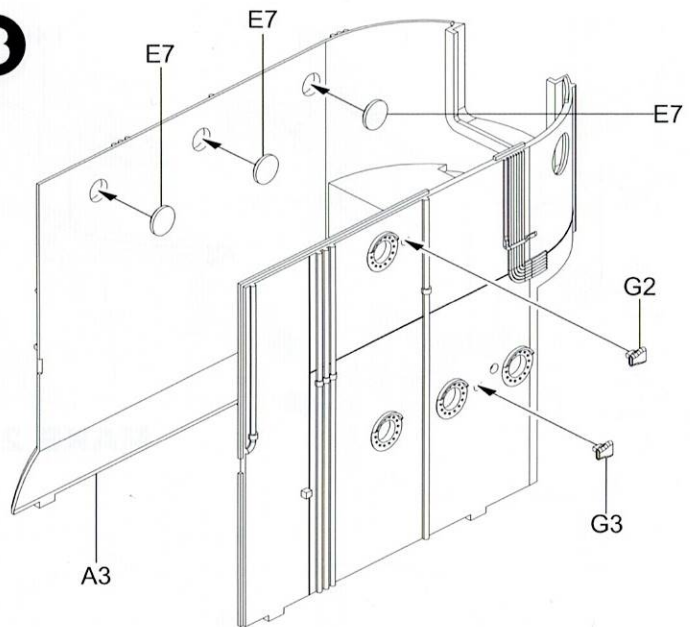
During the Battle of Midway On June 5, 1942, Akagi participated in the Battle of Midway as the flagship of the First Mobile Force. At 1020 hours, Akagi was hit by three SBD dive bombers (from the CV-6 bomber detachment of the USS Enterprise) following the returning destroyer Arashi, and two of the bombs were dropped on Akagi, one of which hit near the mid-elevator and penetrated through the flight deck and detonated in the hangar, and the other was a near-vectorial bomb that grazed the ship. The other was a near-vector bomb that grazed the aft transom deck and damaged the rudder. At that time, the hangar was in the process of refueling the ship's attack planes and loading bombs to be converted from land bombs to ship bombs. The chain of explosions from the bombs caused the fire on board to get out of control, but the fire did not reach the Akagi's substructure, and the fire was brought under control at 12:00 p.m. However, due to the fire of aviation gasoline, the condition of the Akagi continued to deteriorate. At 19:20 on June 5, the captain of Akagi ordered the evacuation of the ship, and Akagi remained afloat after all hands left the ship. At 2:55 on June 6, Commander Yamamoto gave the order to terminate the Midway operation and asked Akagi to sink. The task of self-sinking was assigned to the Japanese destroyer fleet, namely "Ogikaze", "Nodate", "Arashi" and "Maikaze". "The four destroyers fired four torpedoes and scored three hits, sinking Akagi at 30°30'N, 178°40'W. On September 25, 1942, the aircraft carrier Akagi was officially delisted.



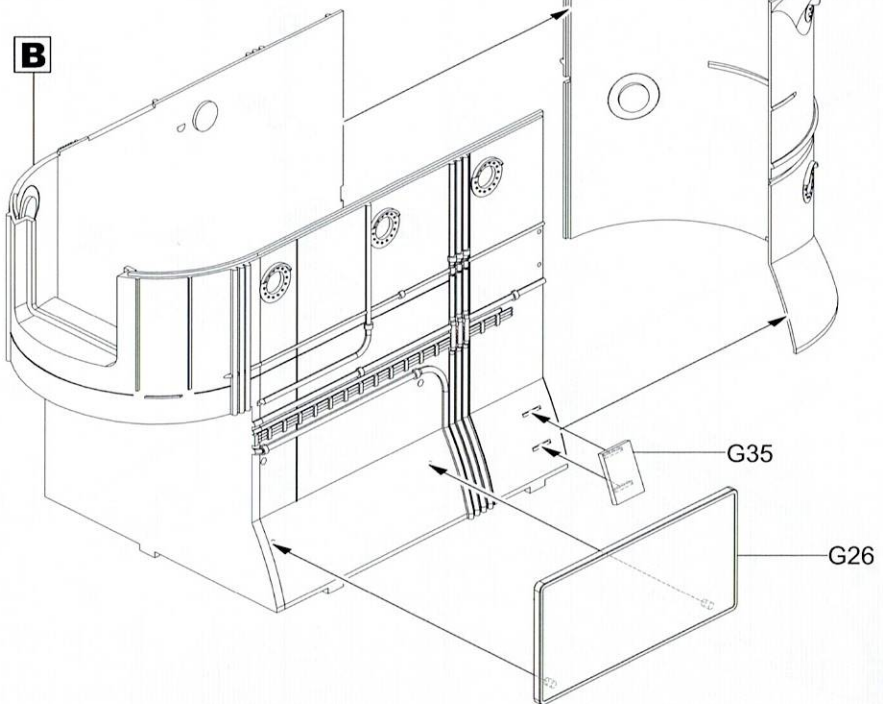
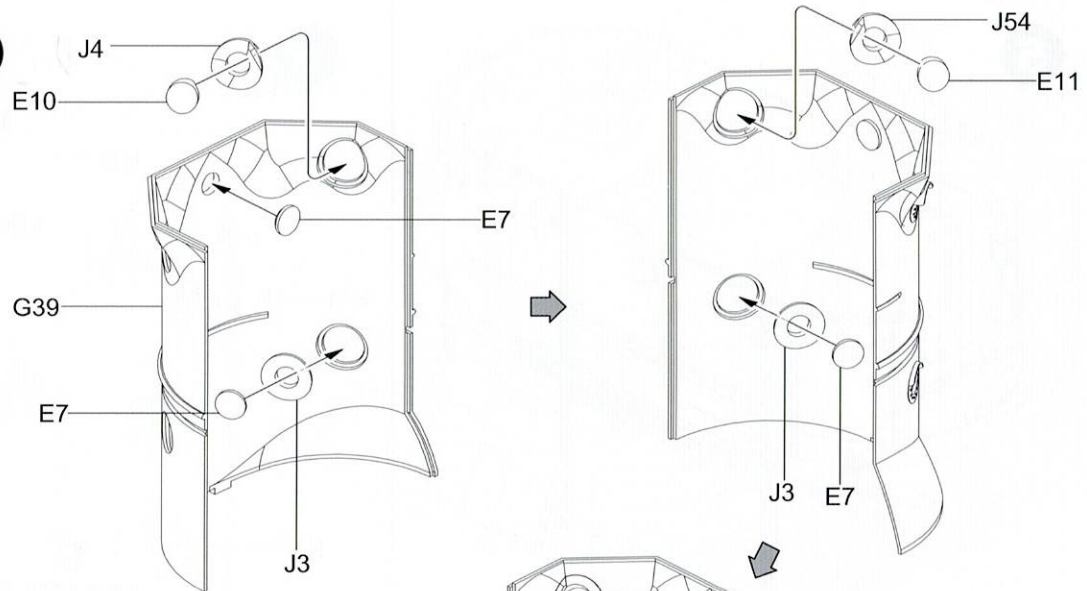
Lighting components

**1****2**

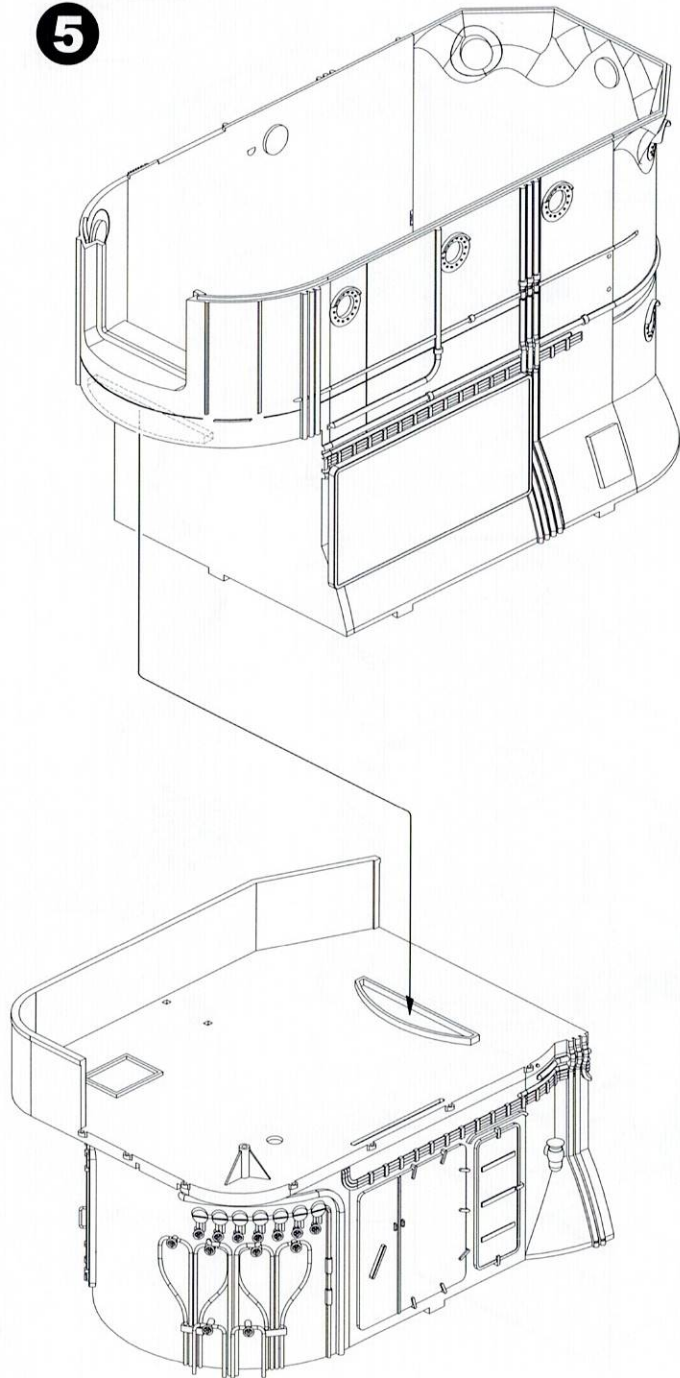
**3**



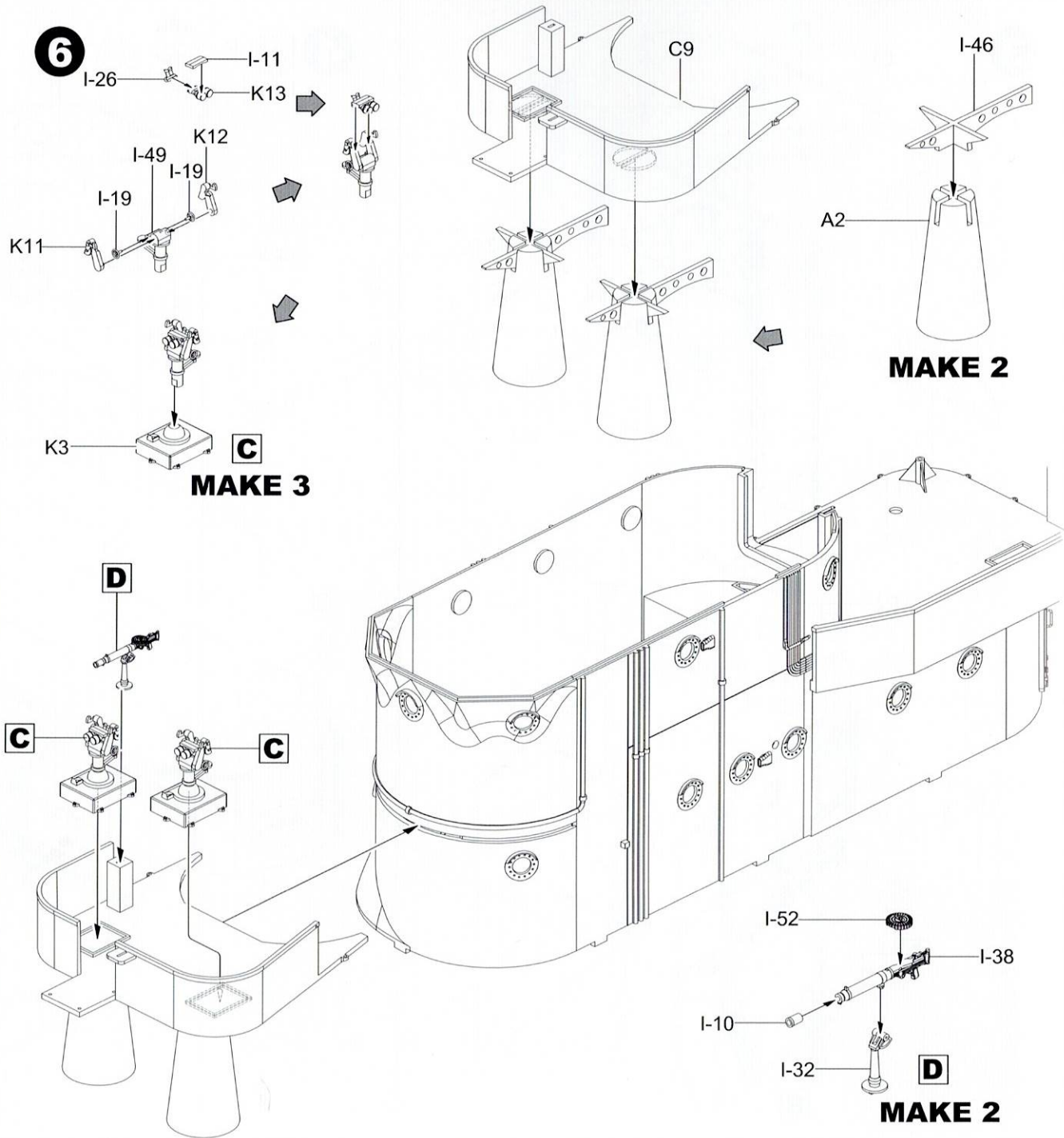
**4**



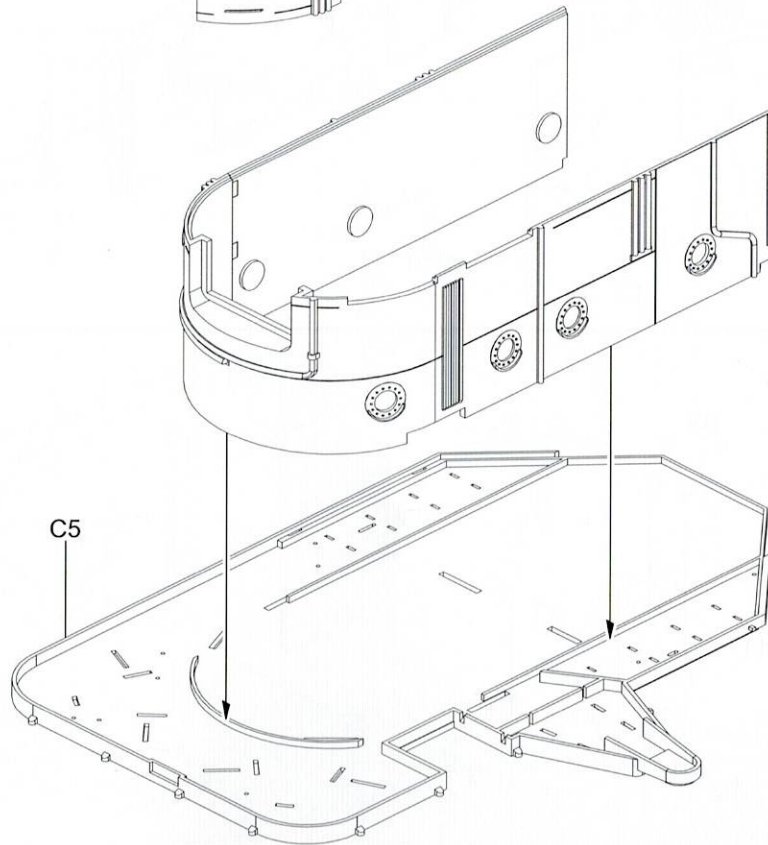
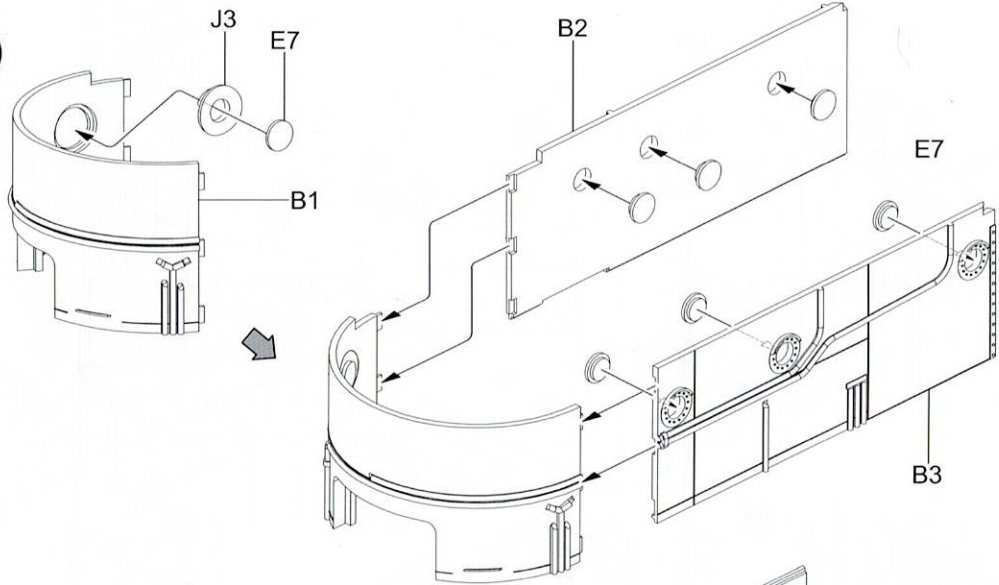
**5**



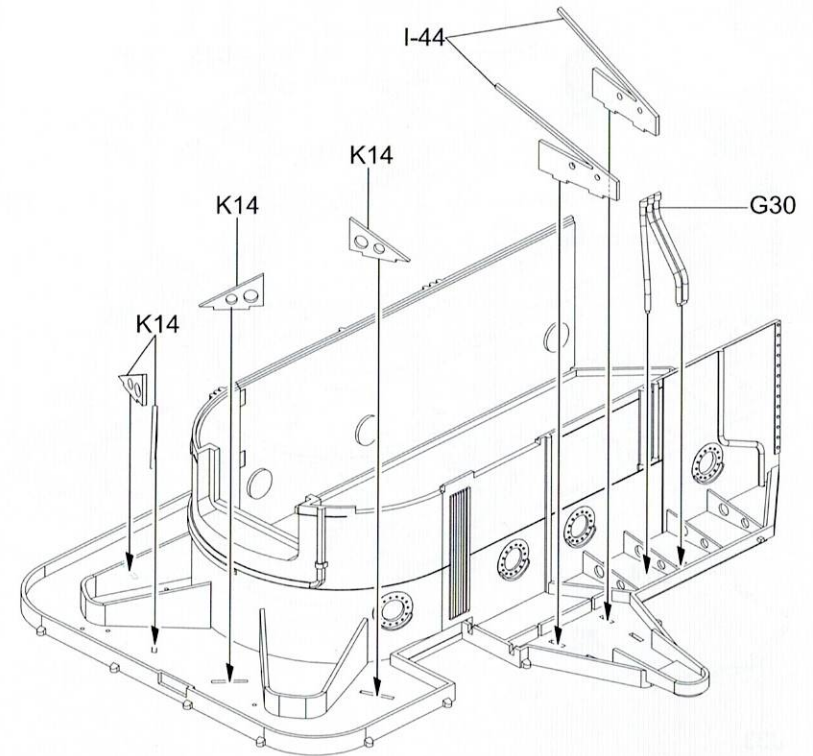
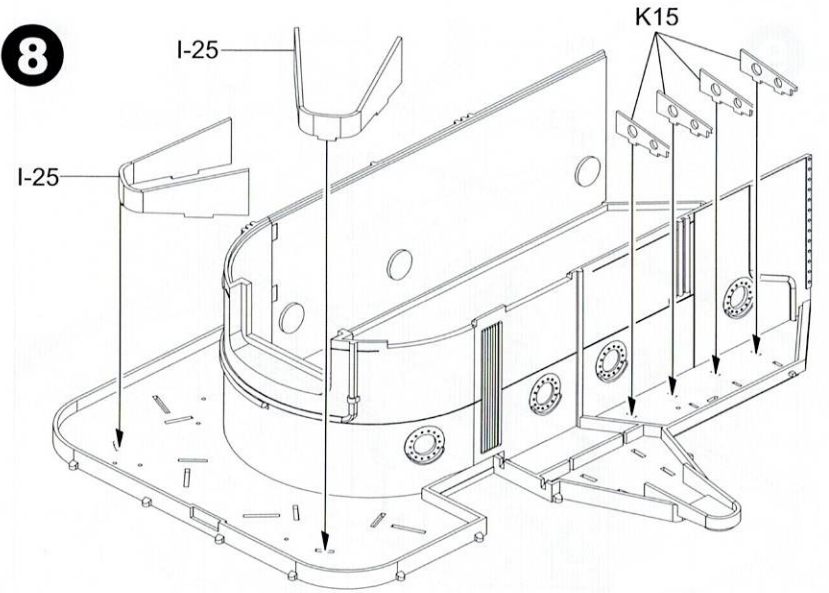
**6**



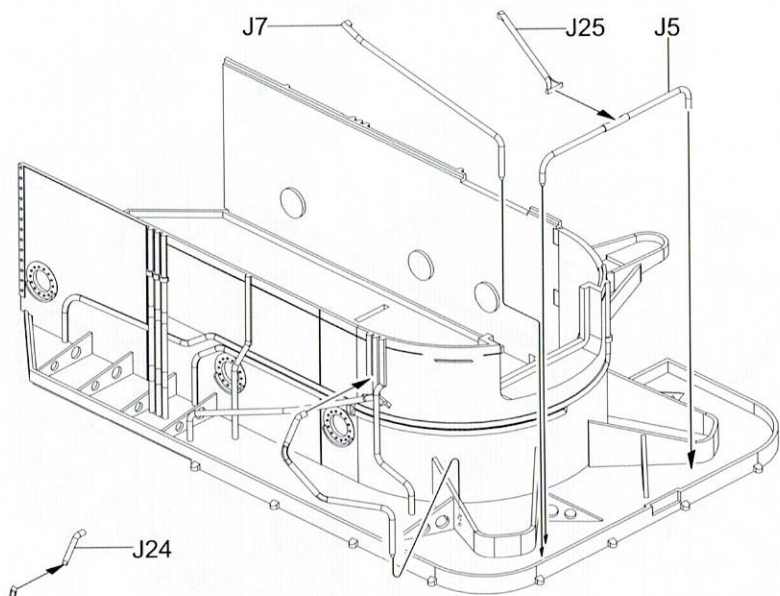
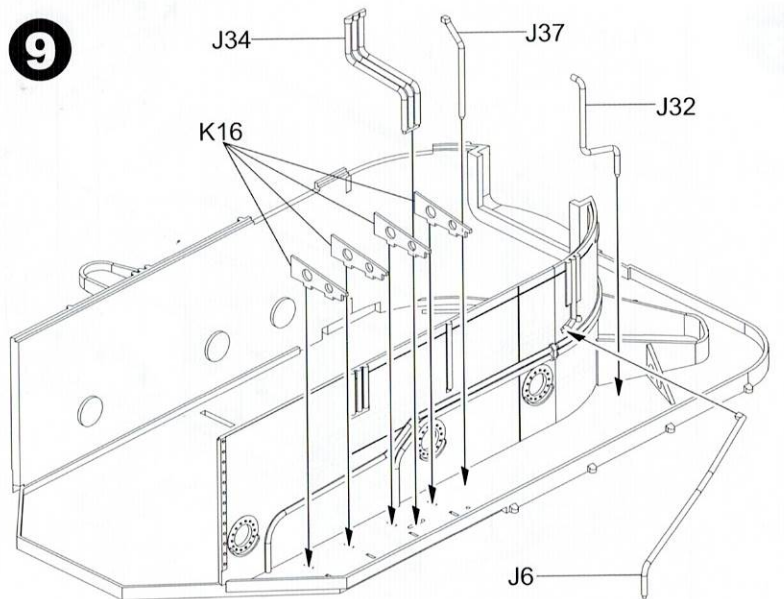
7



8

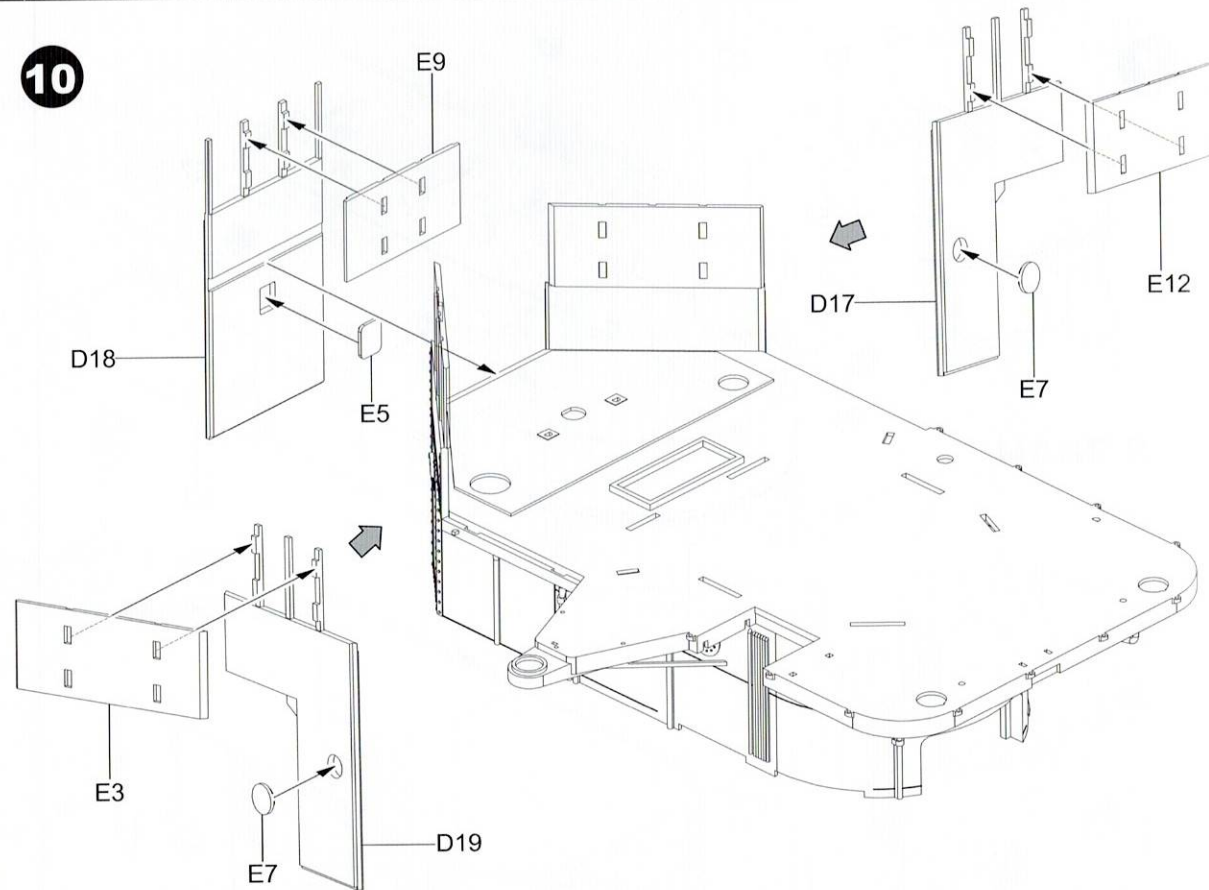


9

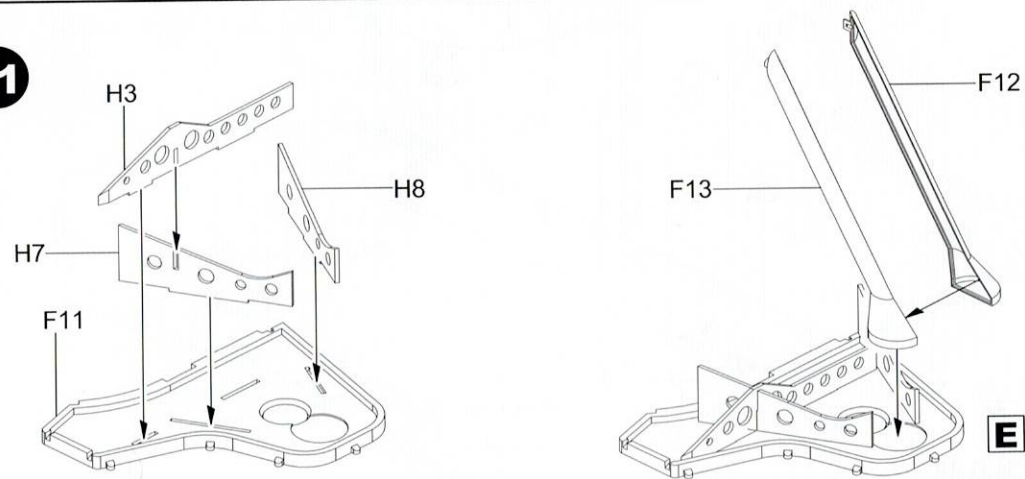


J33

10

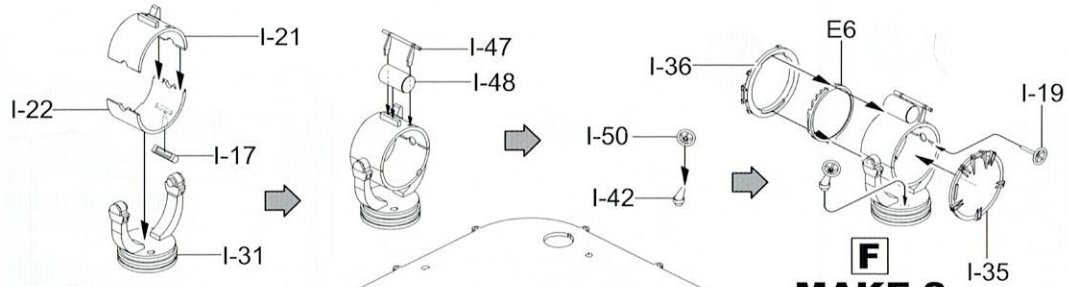


11





12



**F**  
**MAKE 2**

**F**



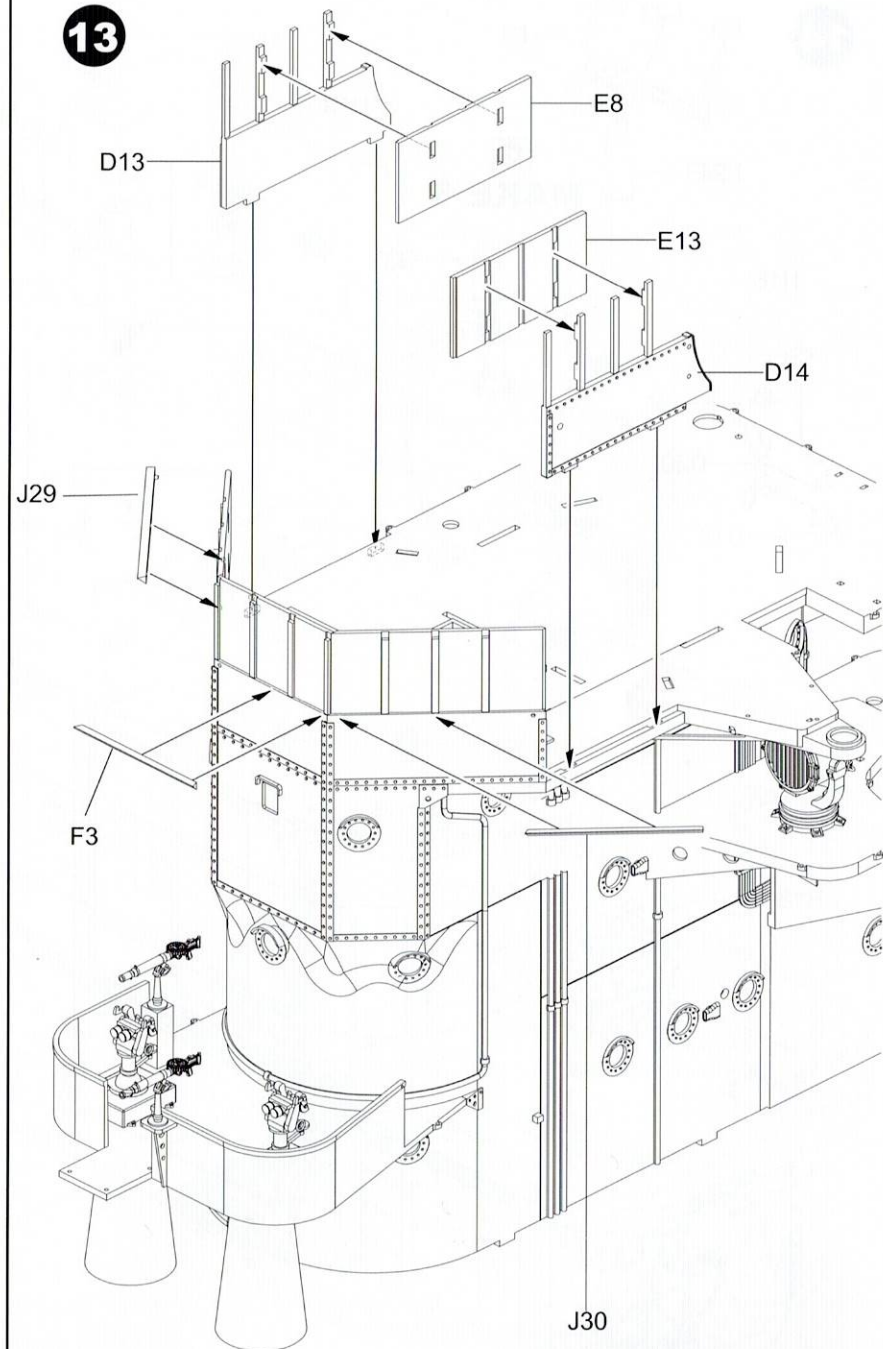
**E**

**D**

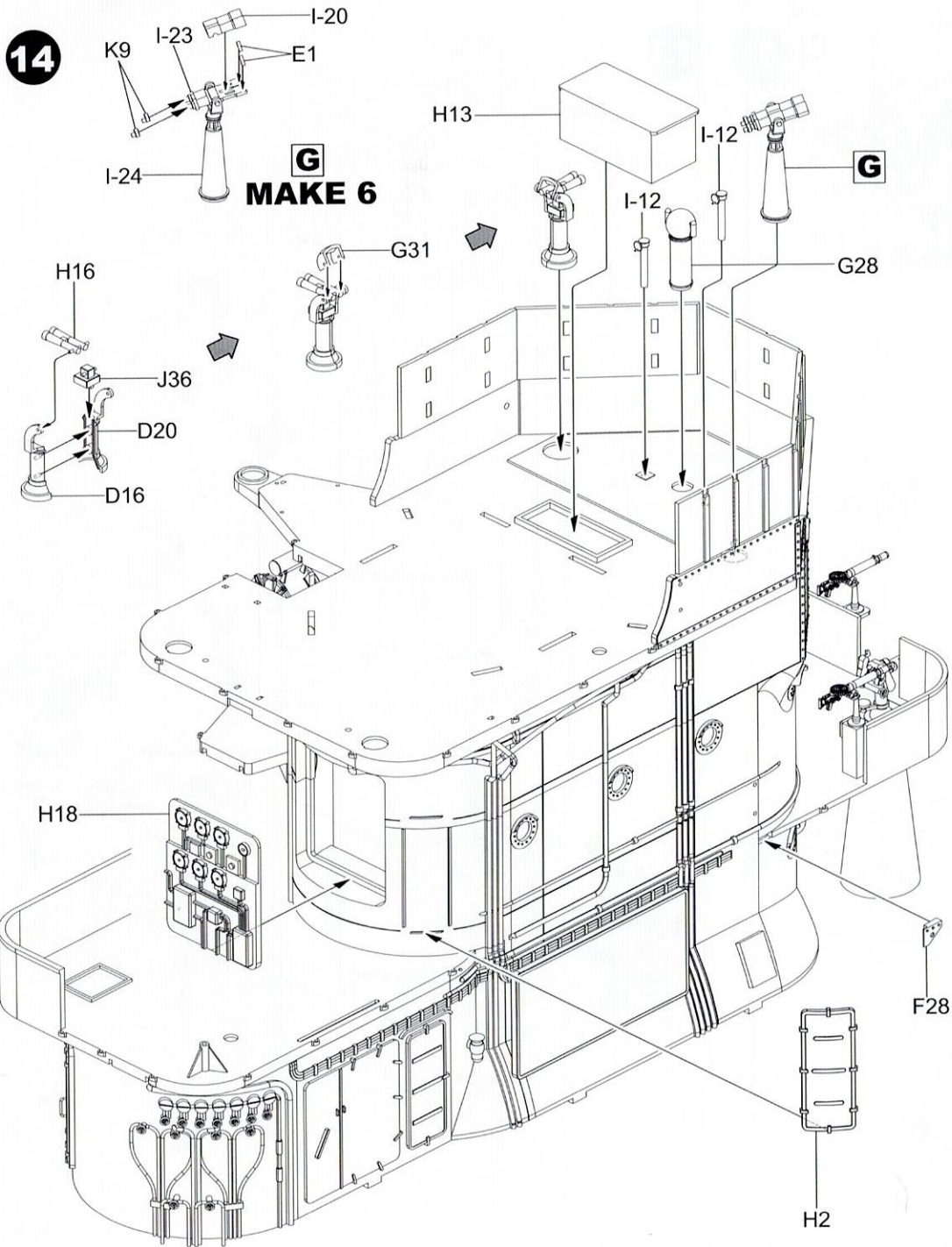
D8

F27

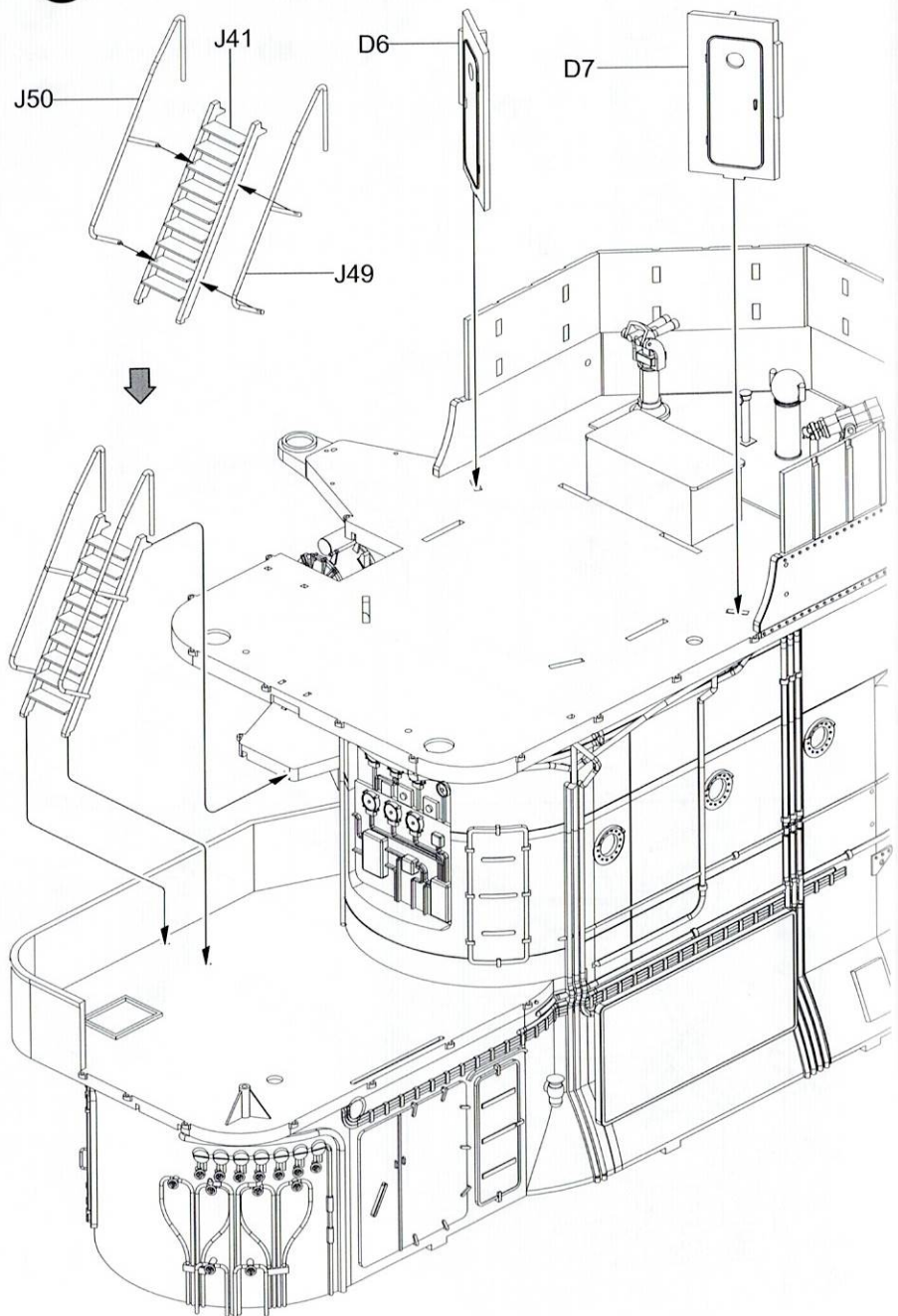
13



14

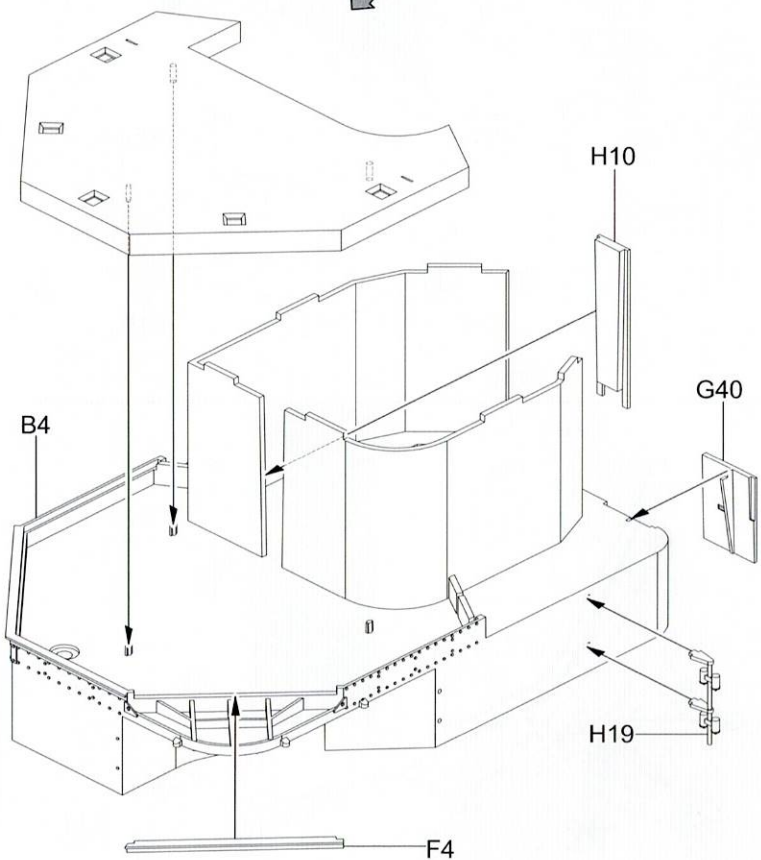
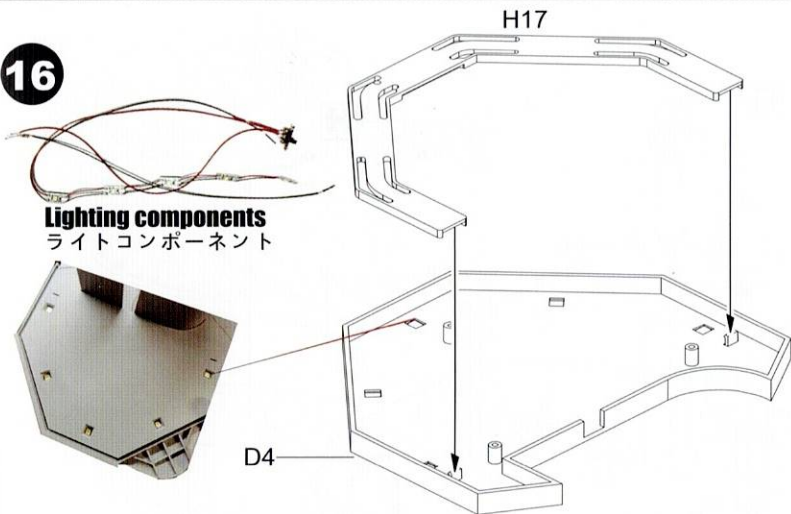


15

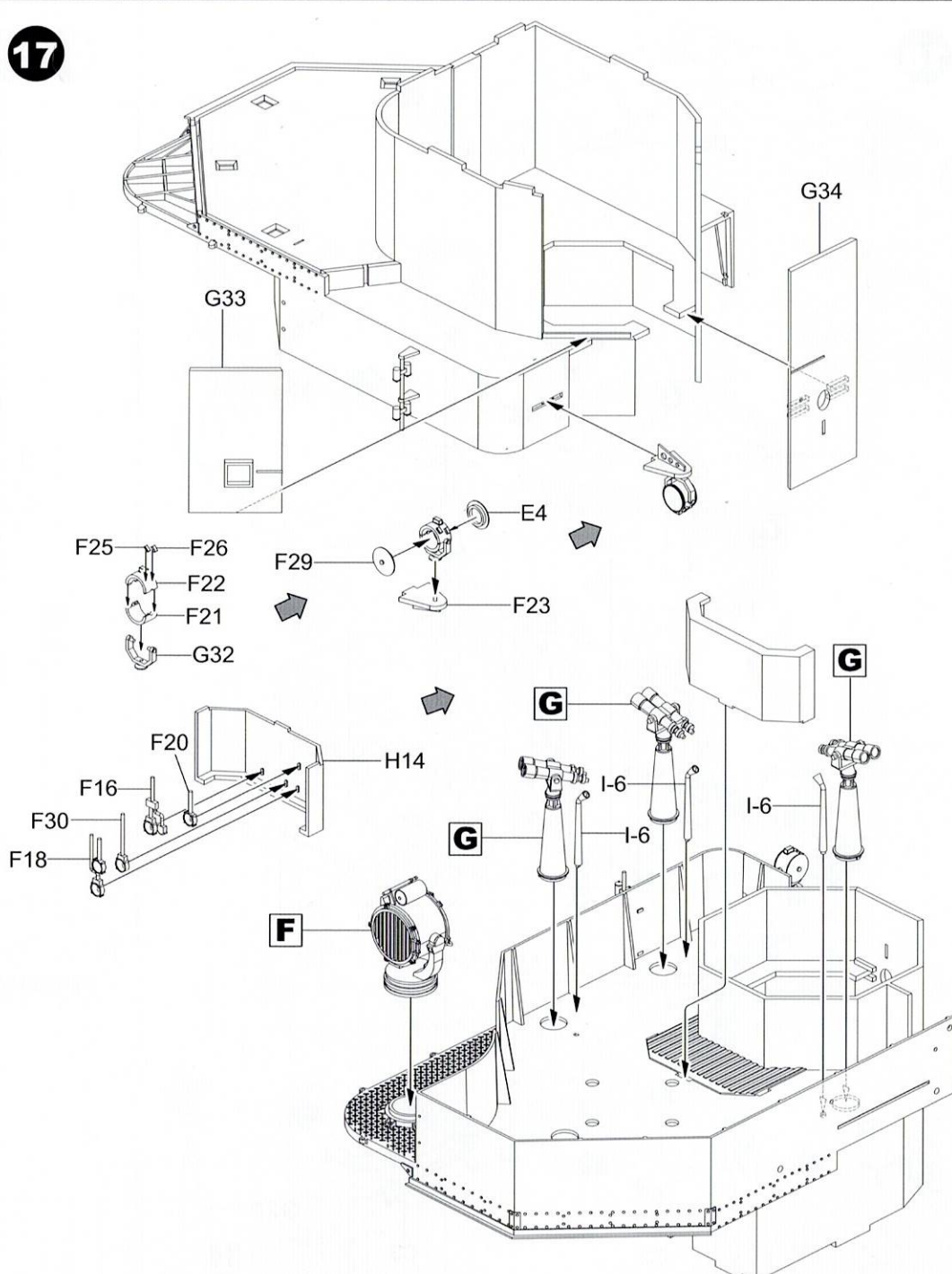


16

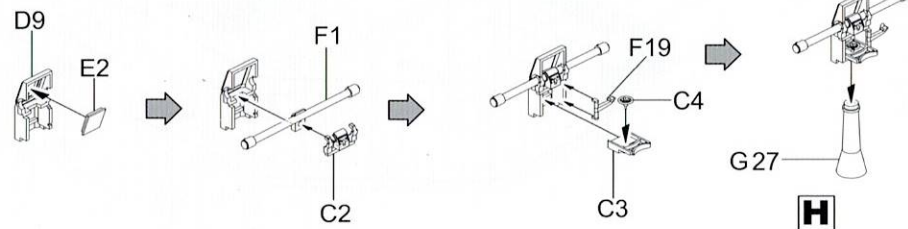
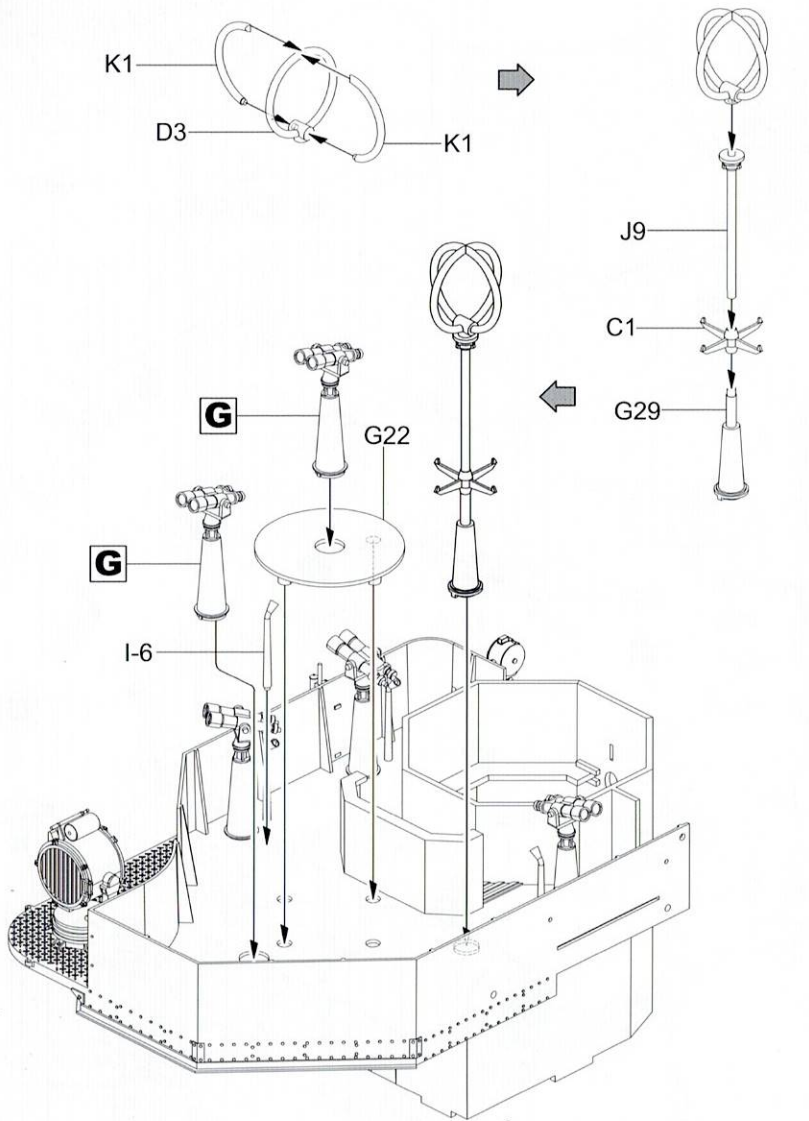
Lighting components  
ライトコンポーネント



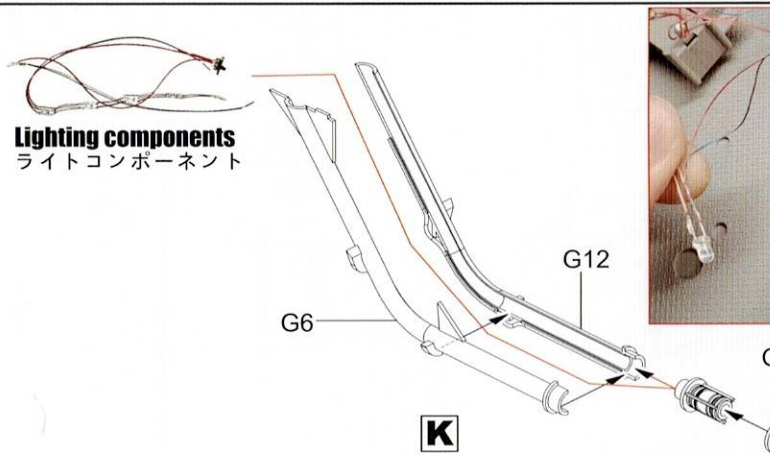
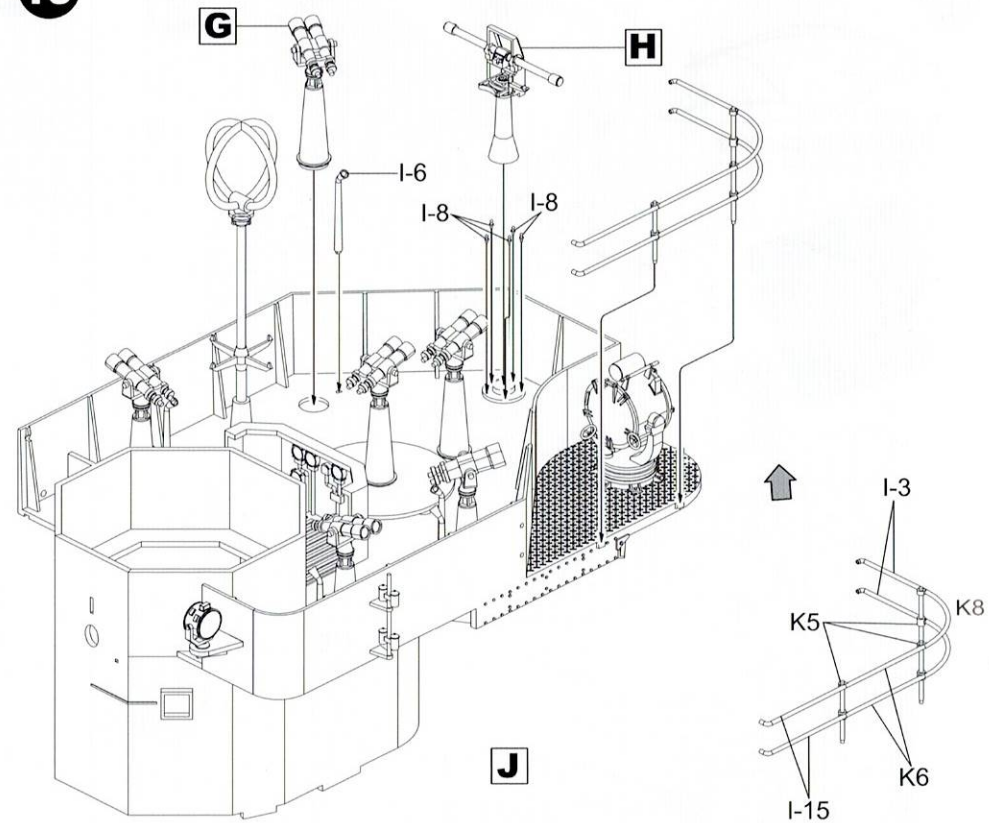
17



18



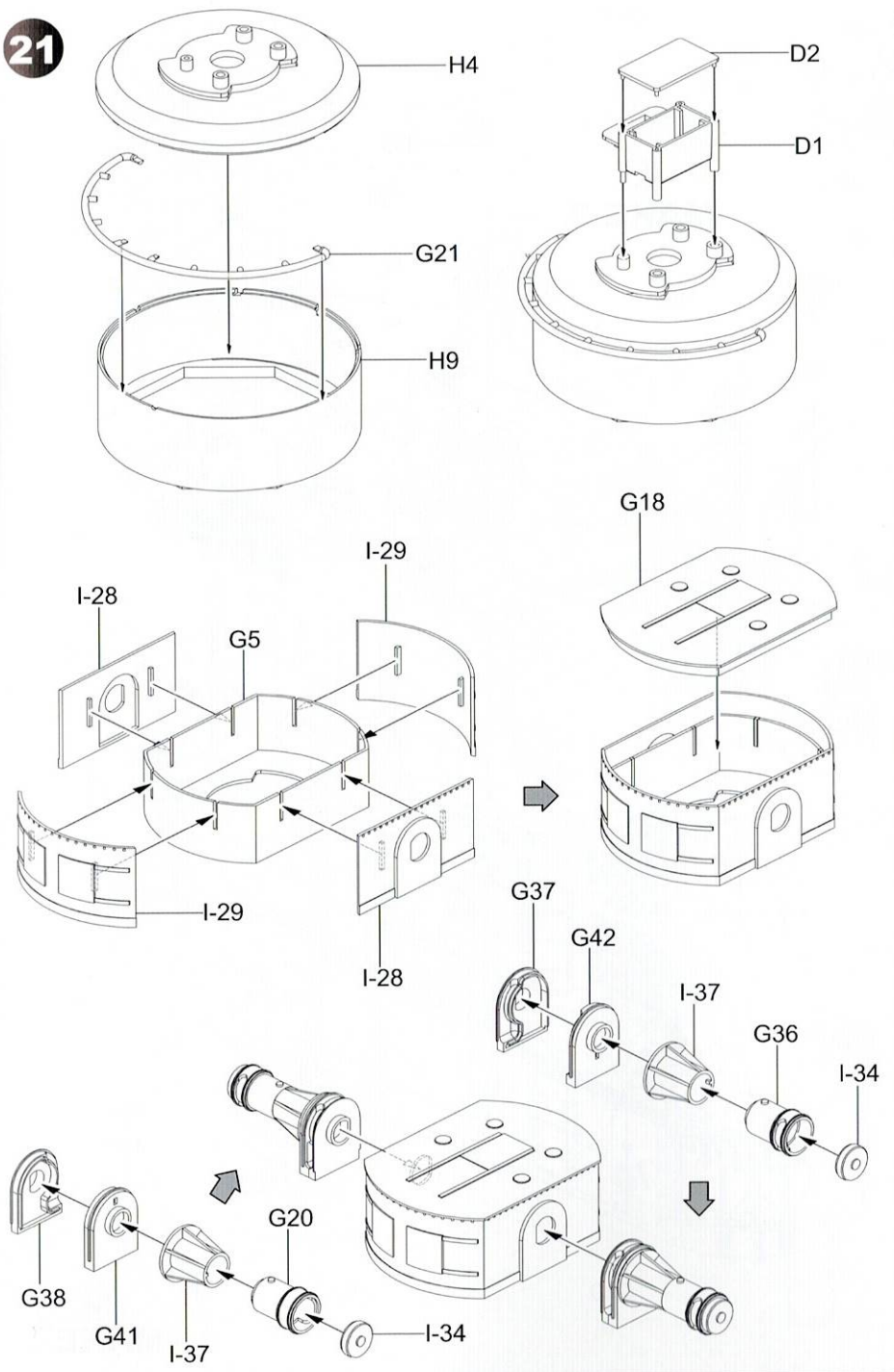
19



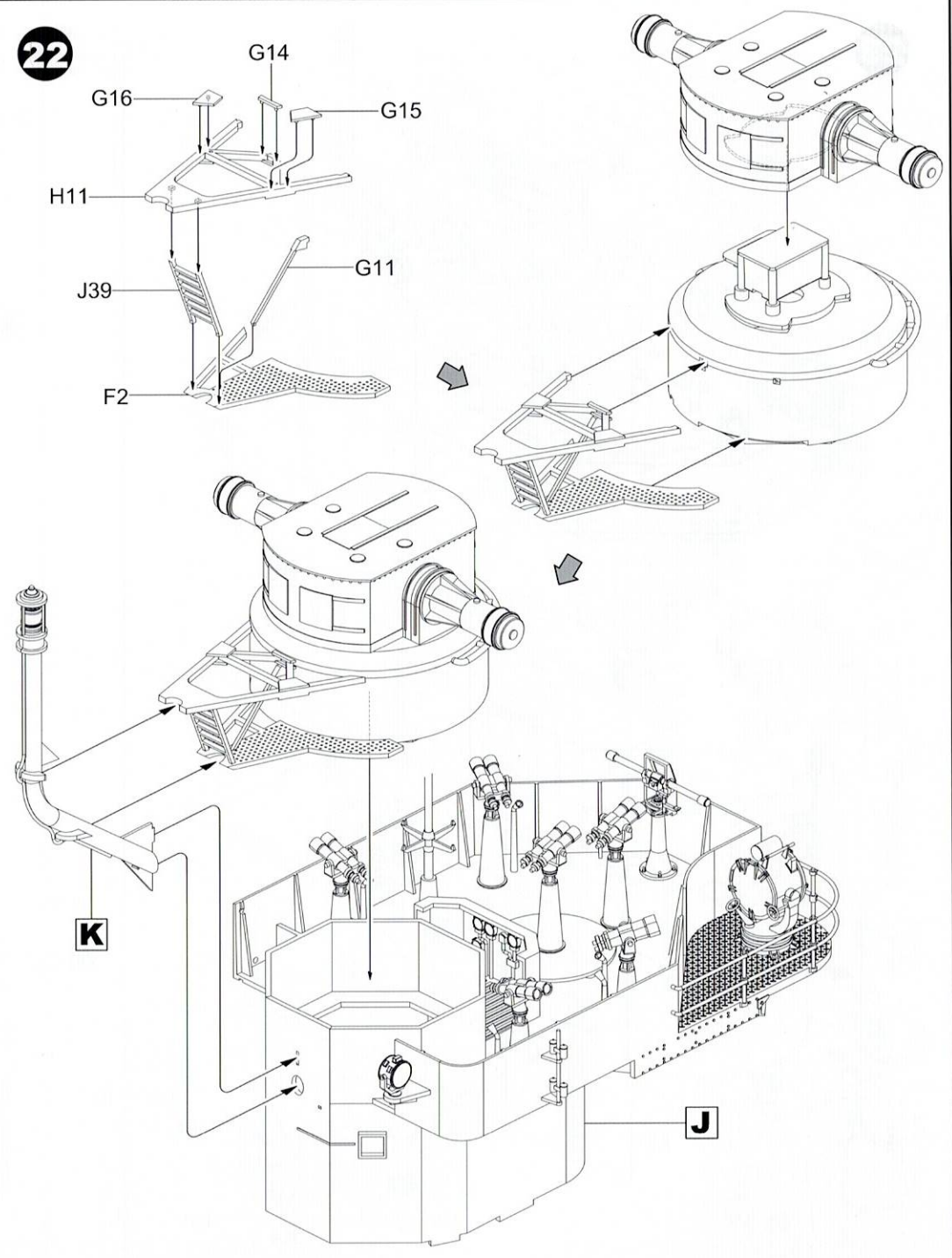
Lighting components  
 ライトコンポーネント

20

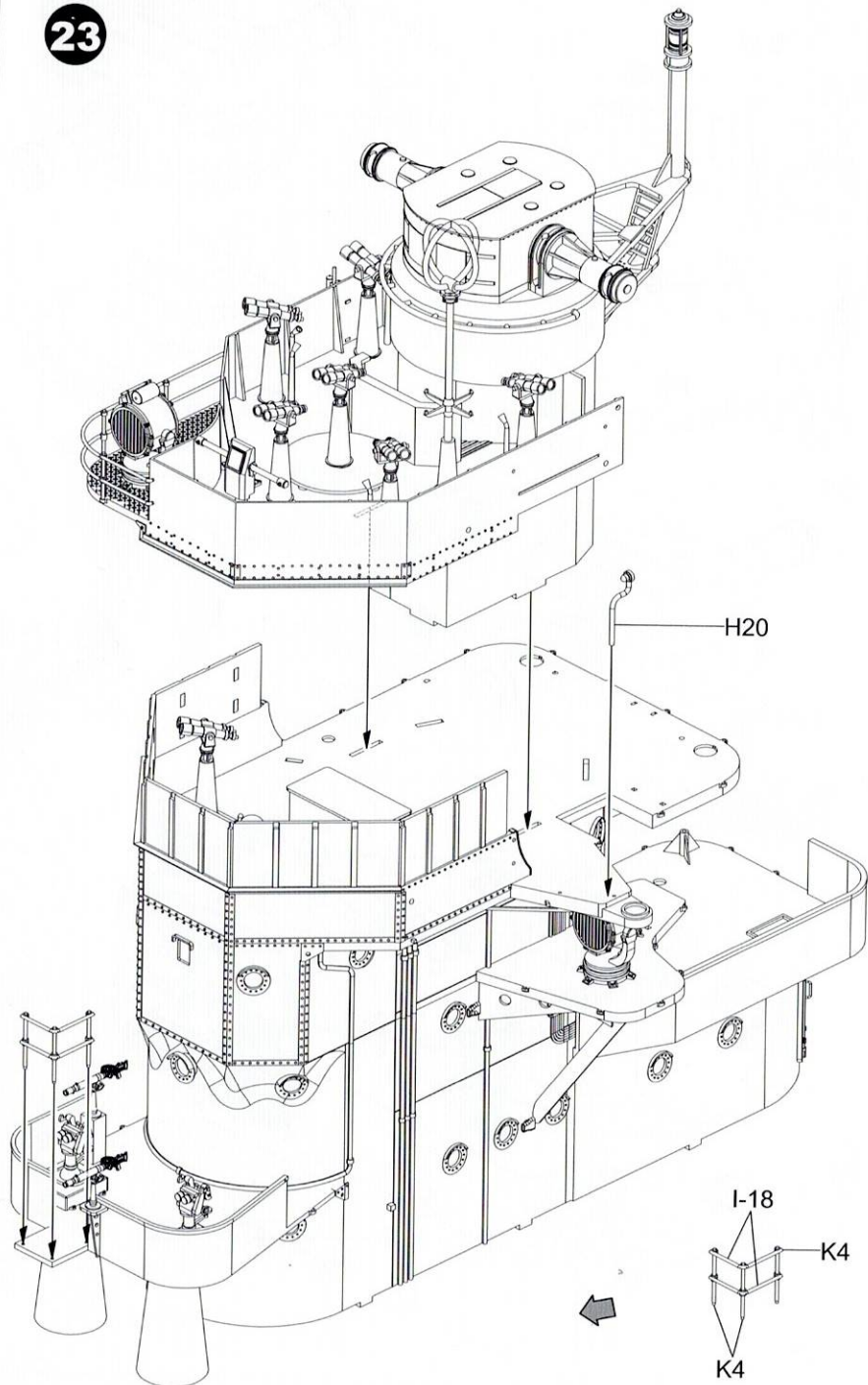
21



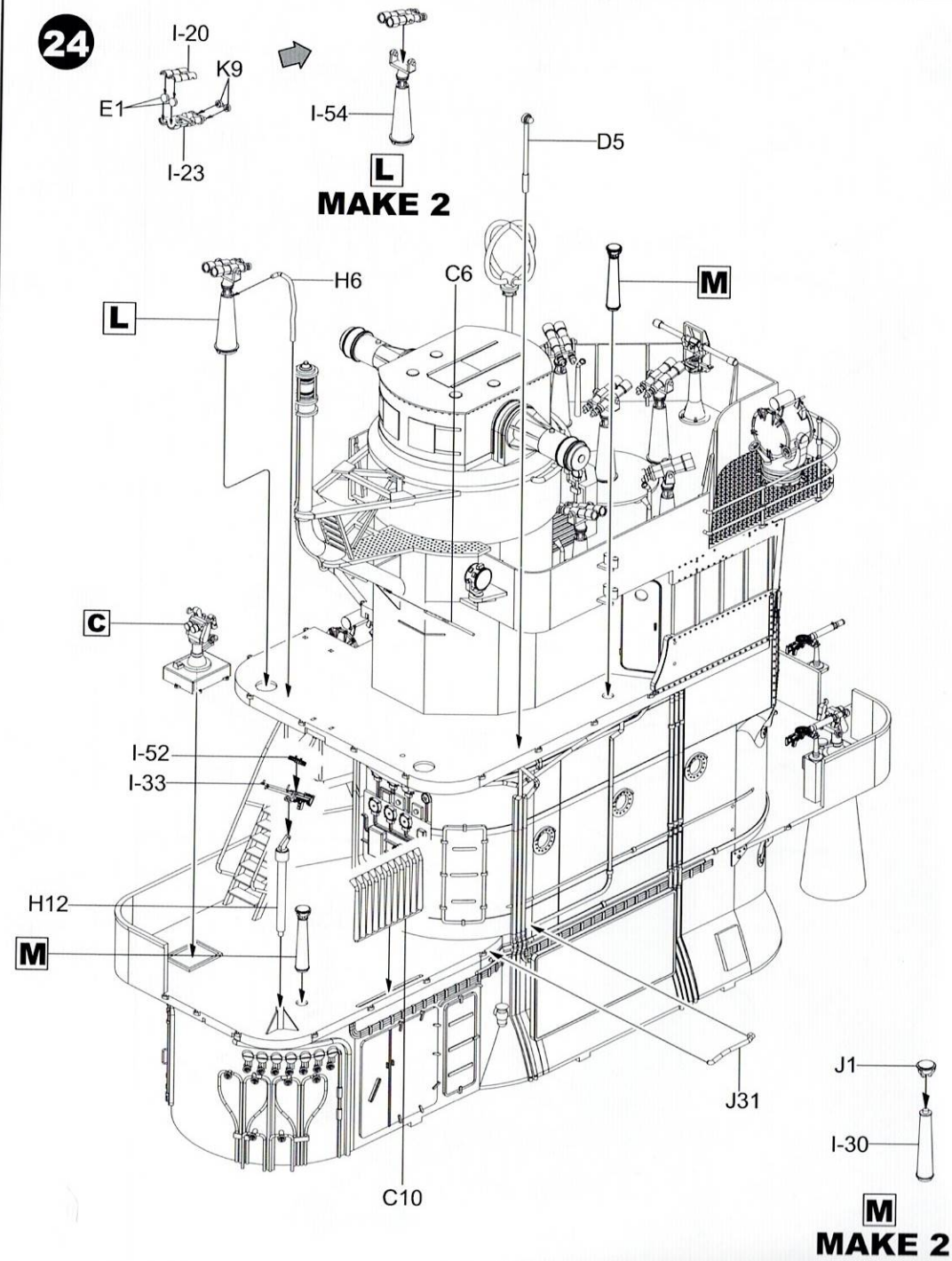
22



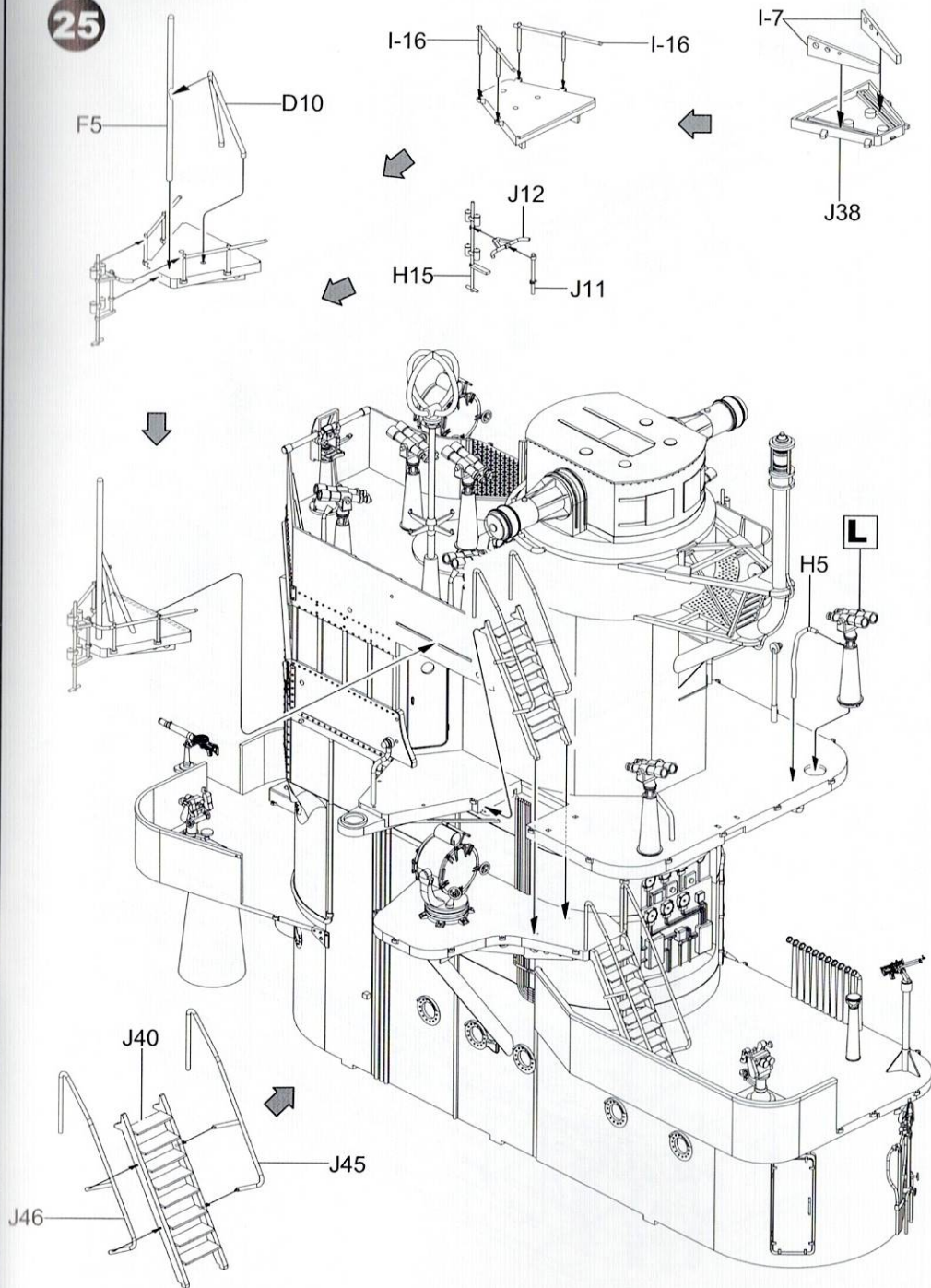
23



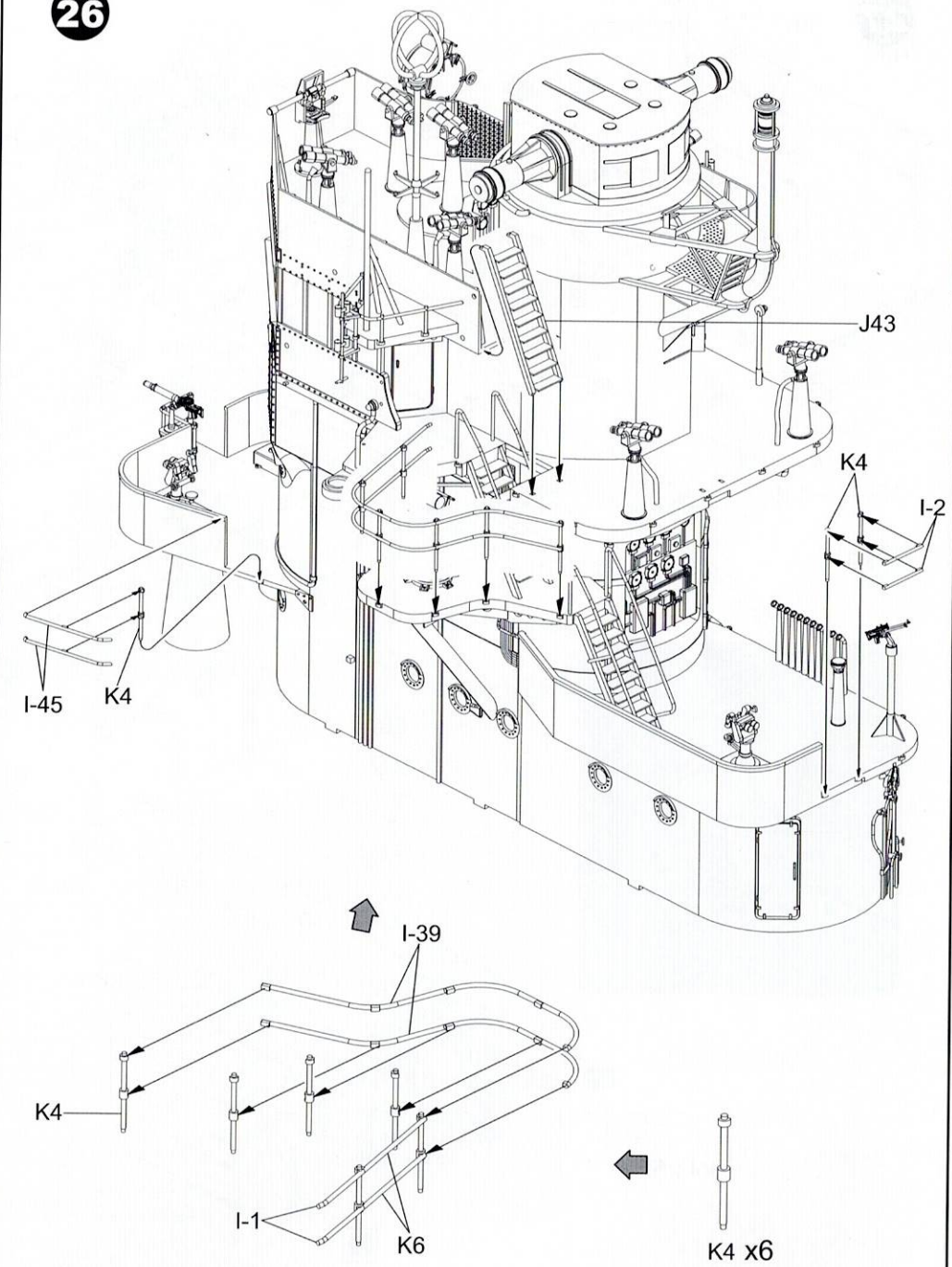
24

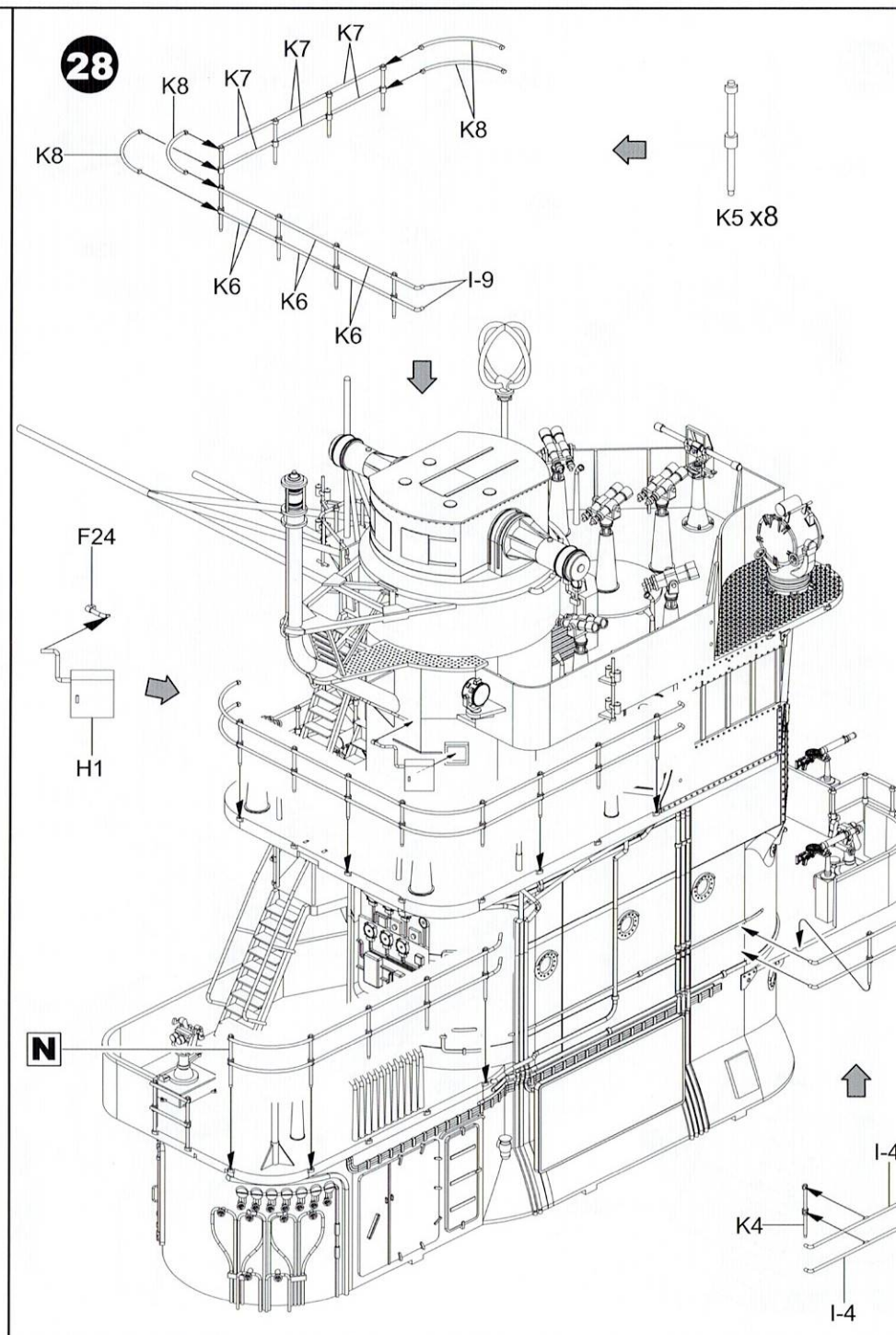
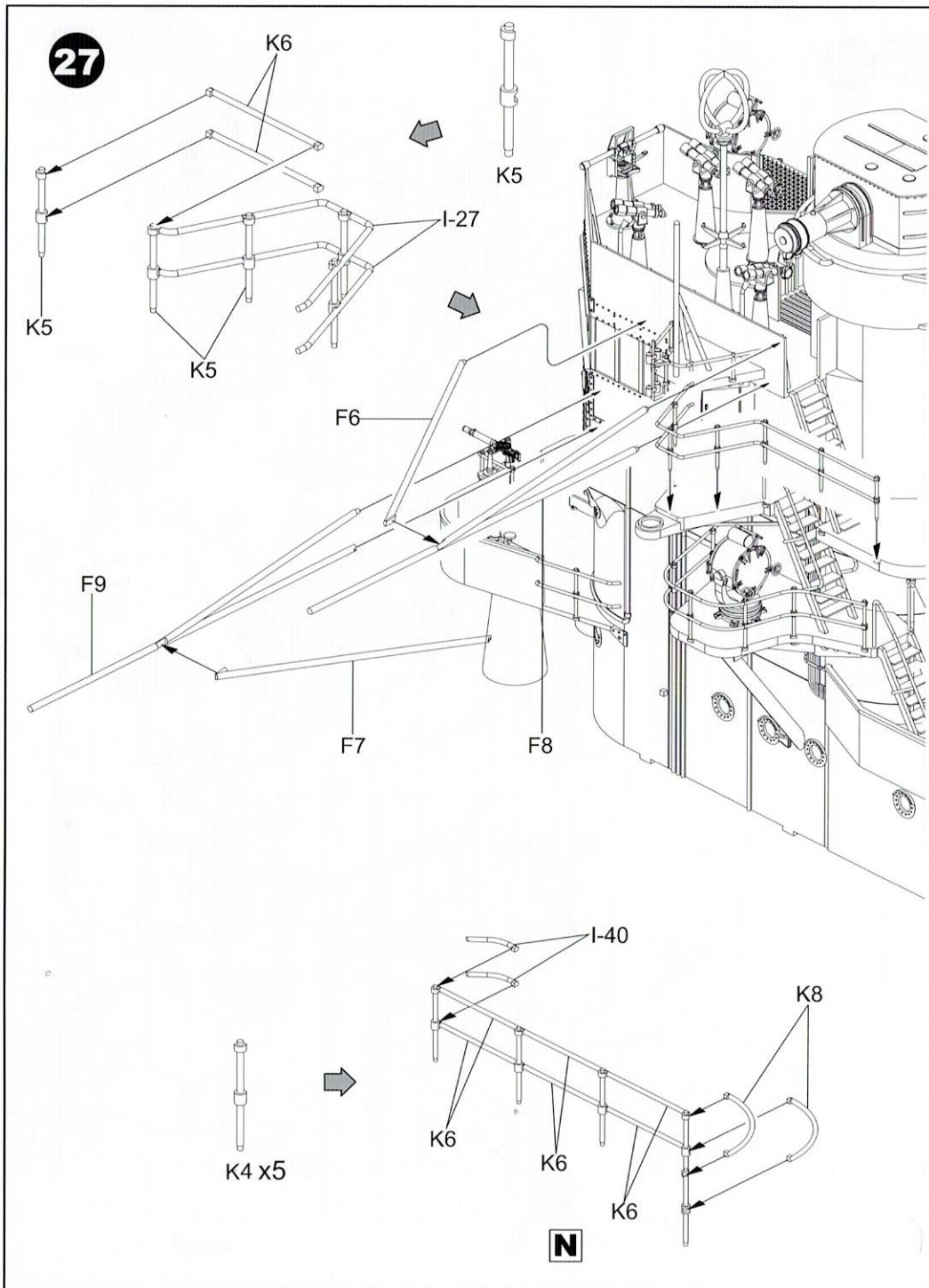


25



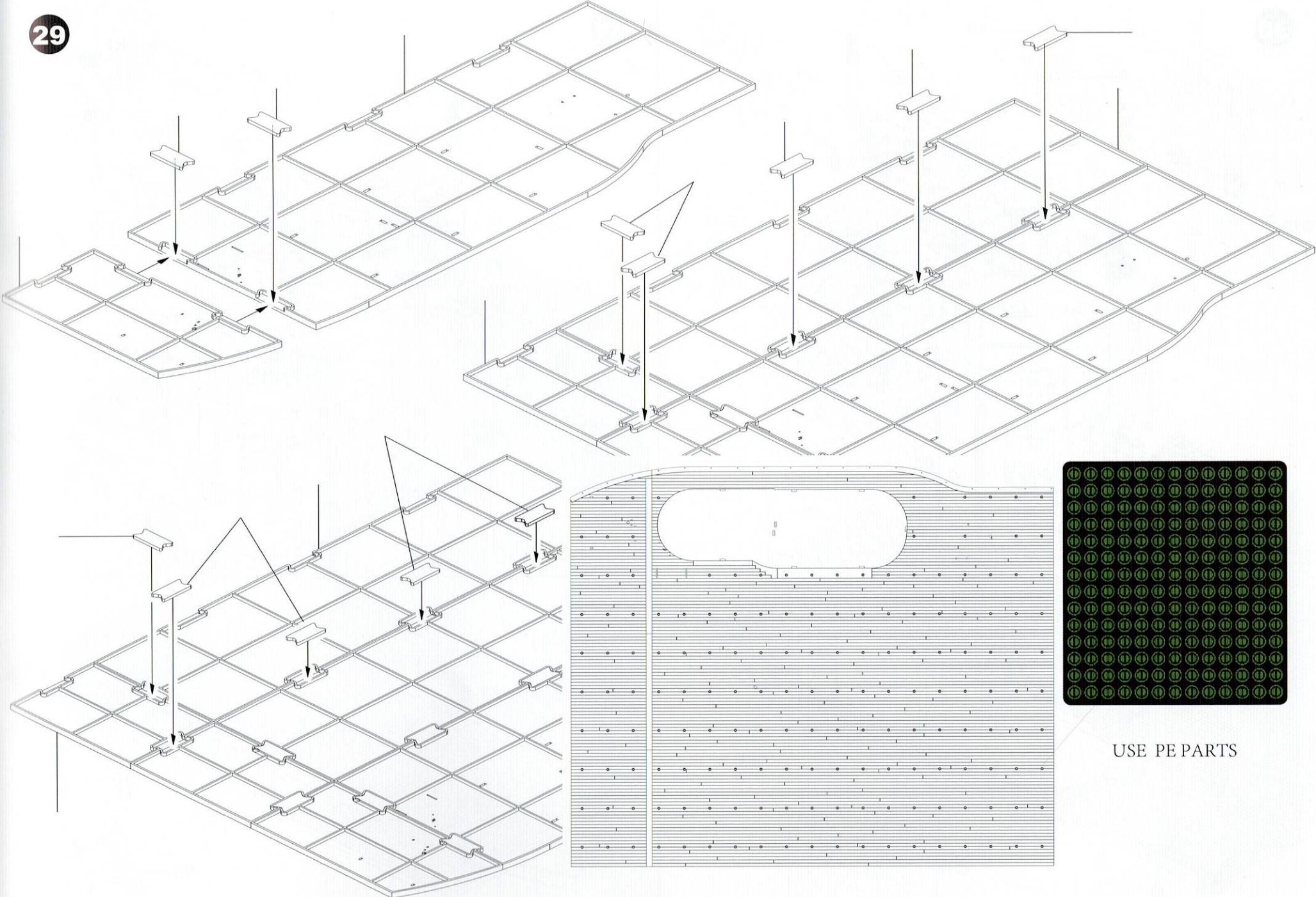
26





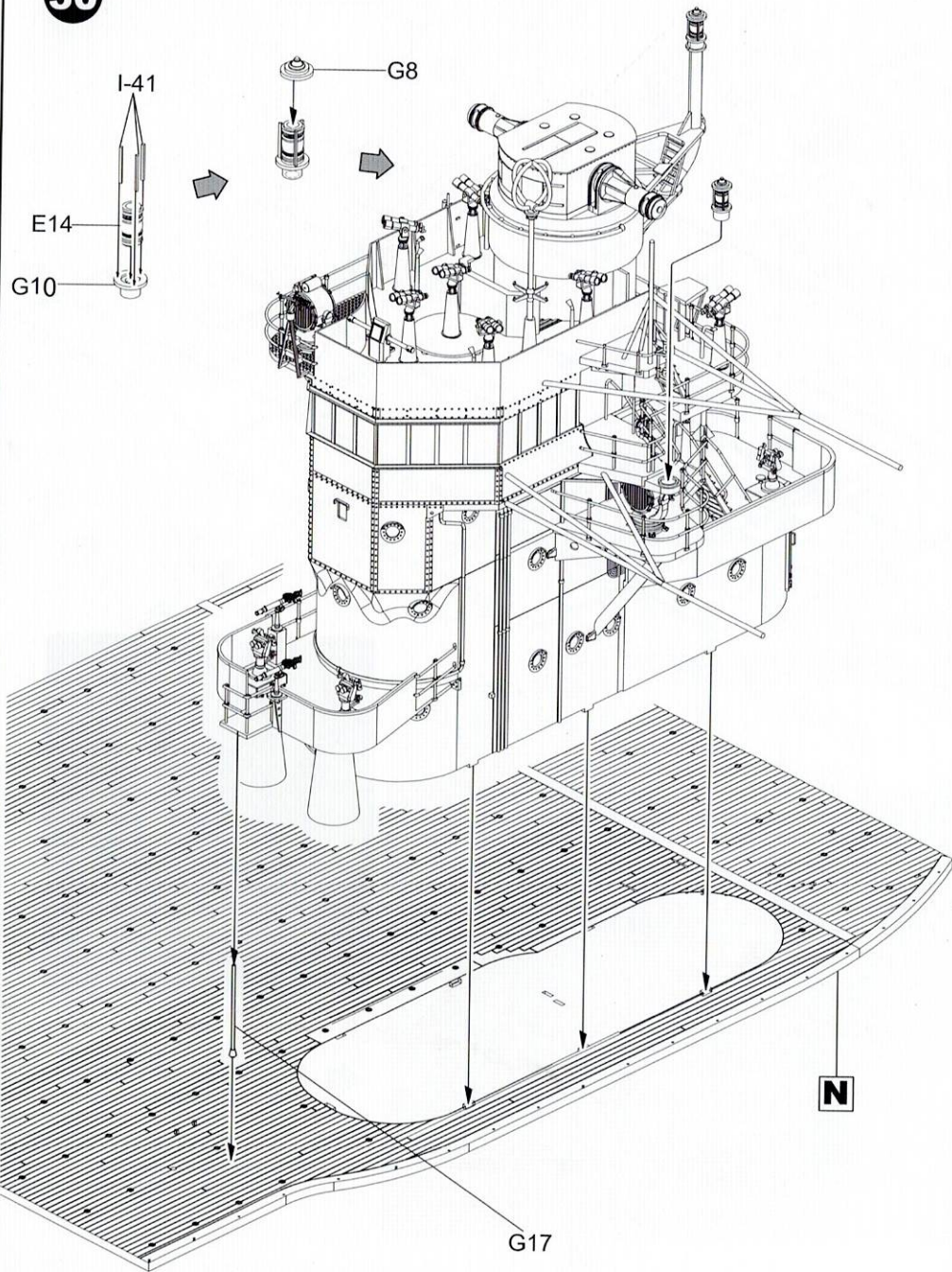


29

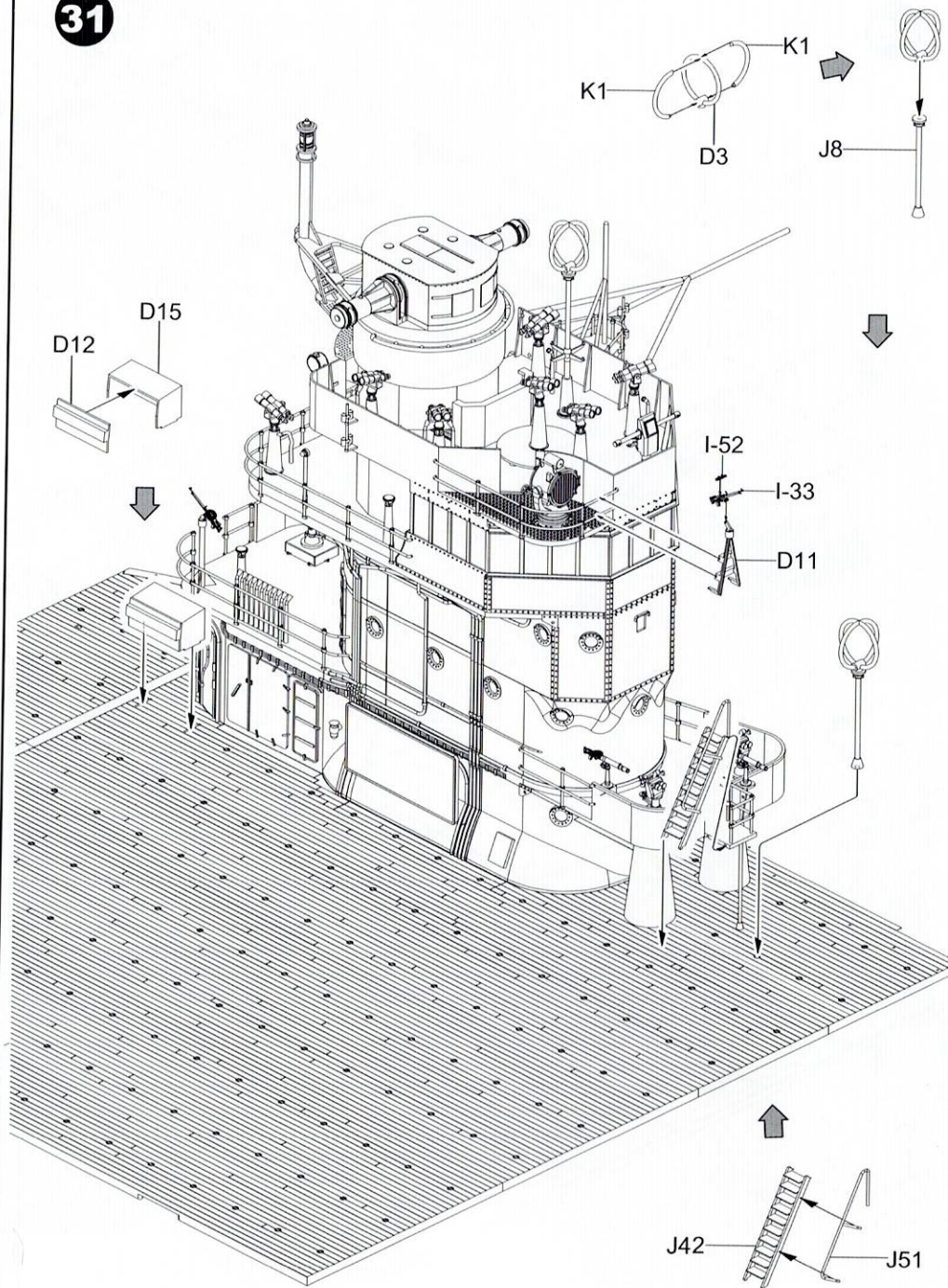


USE PE PARTS

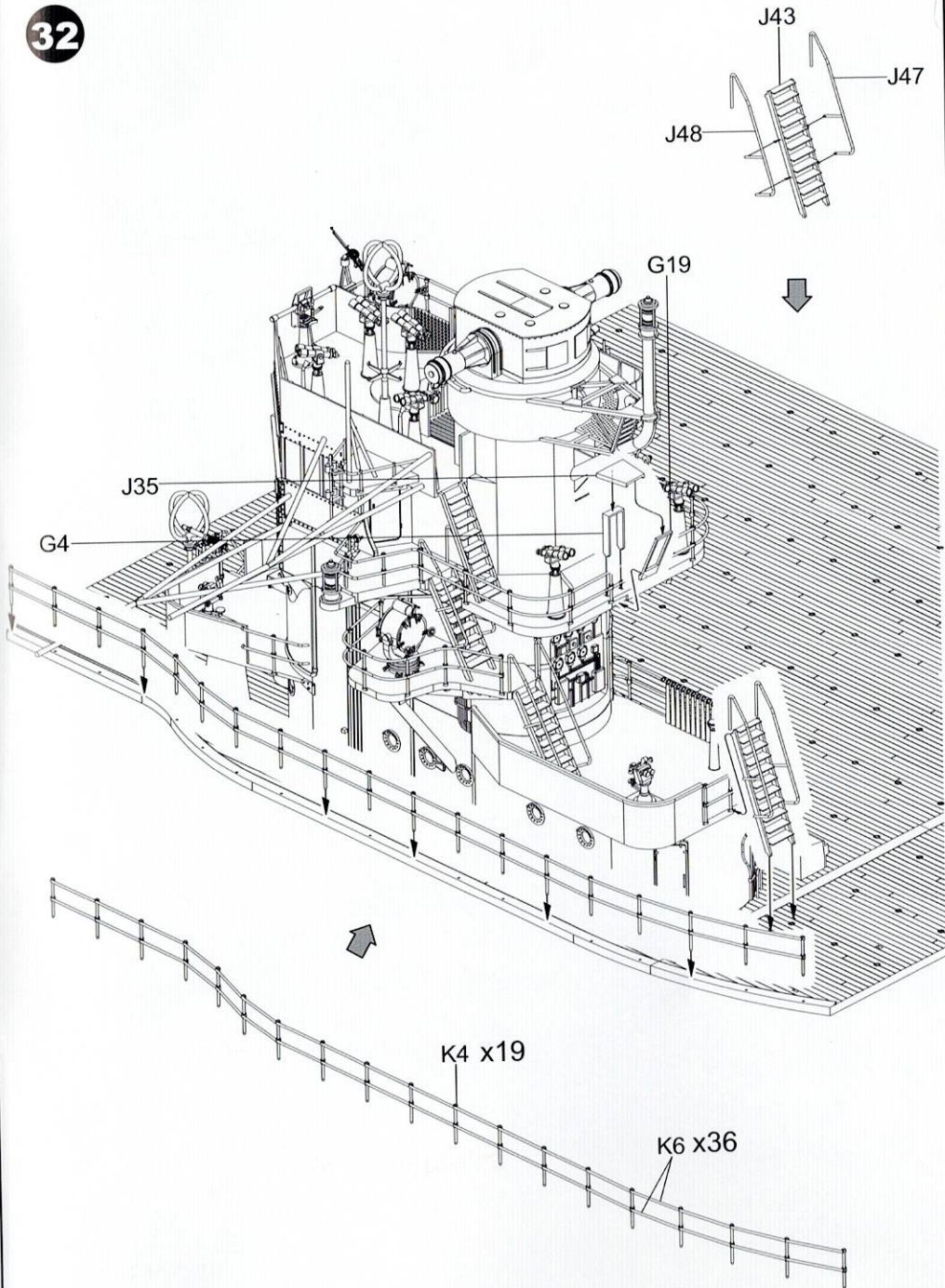
30



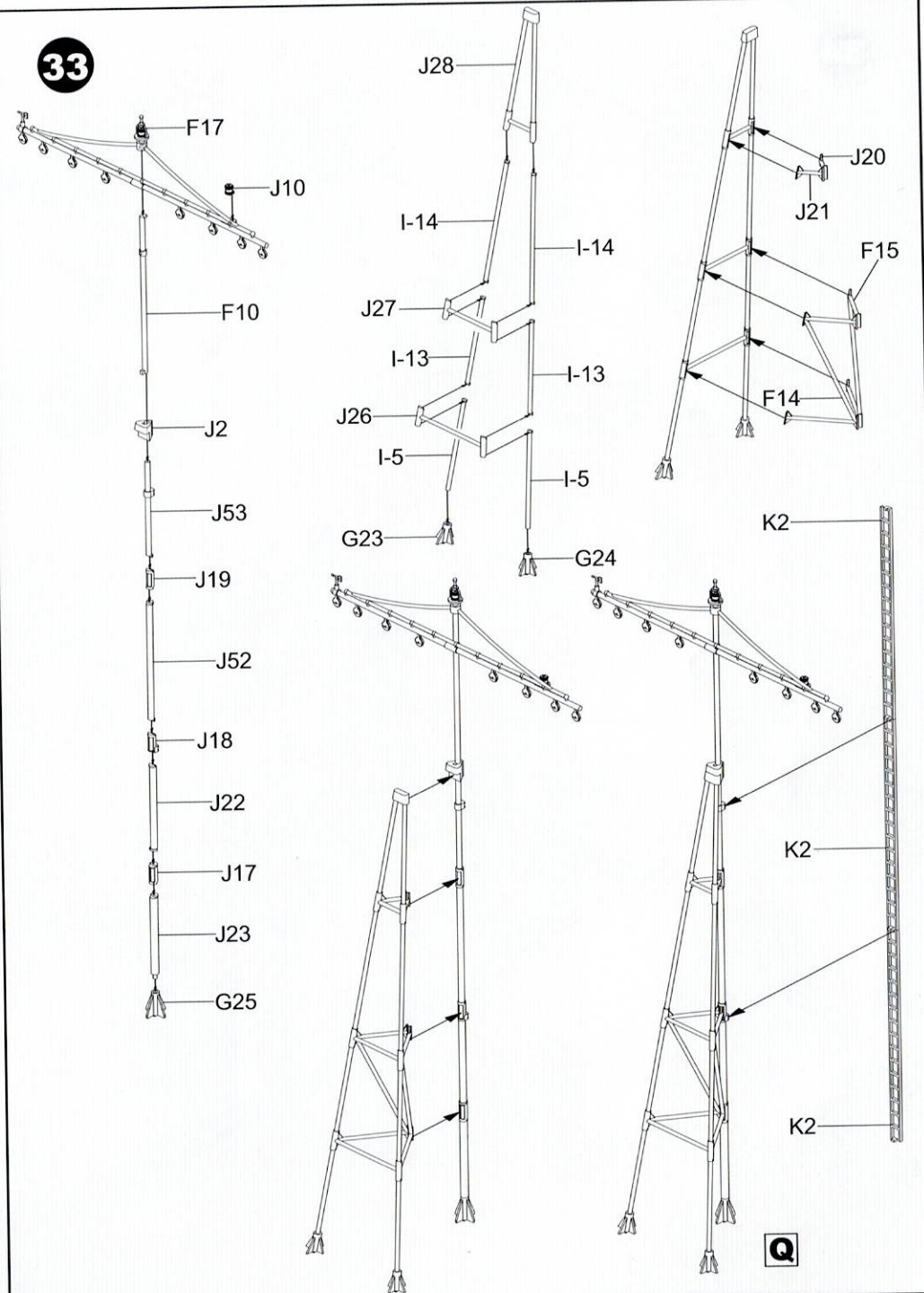
31

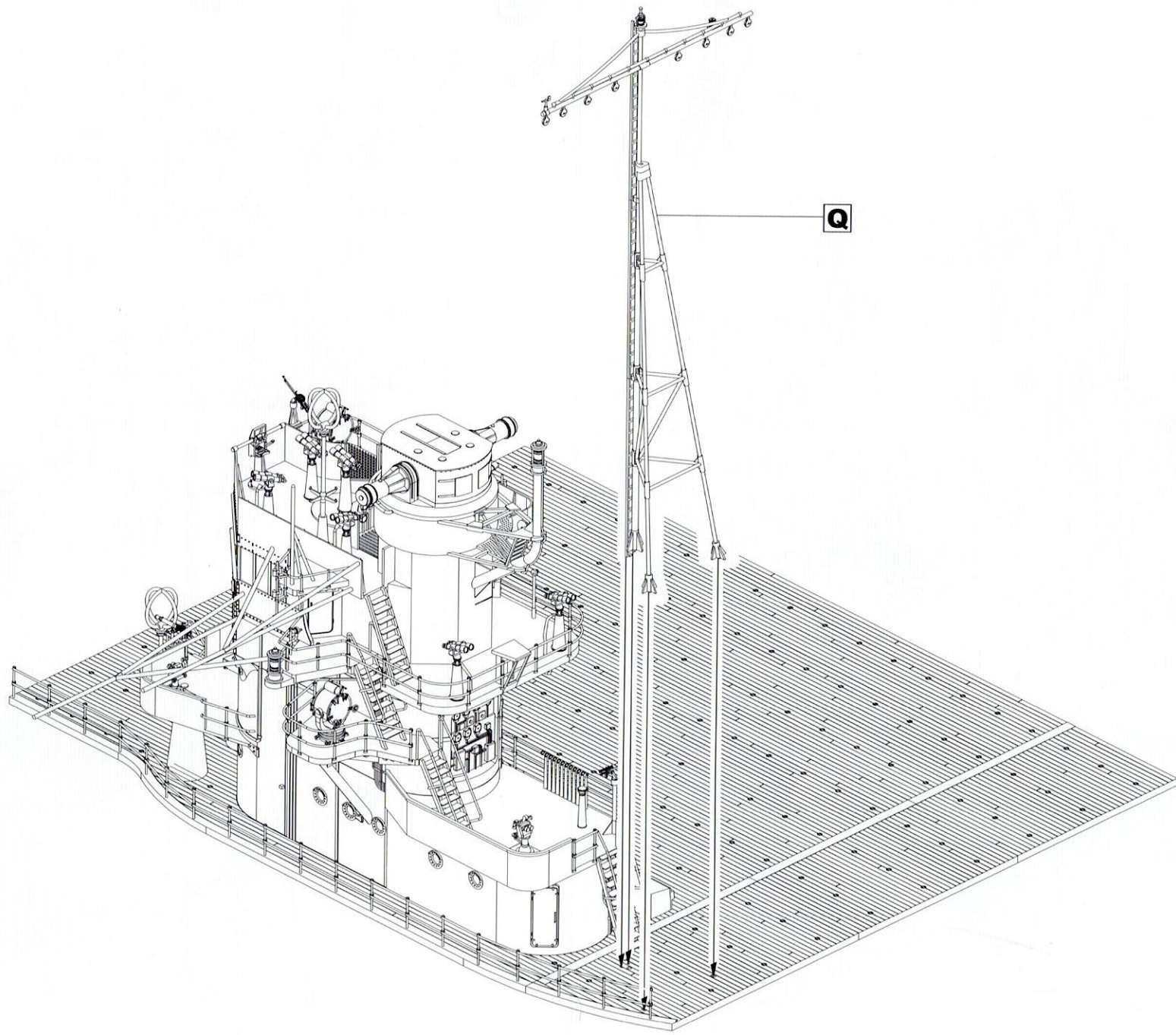


32

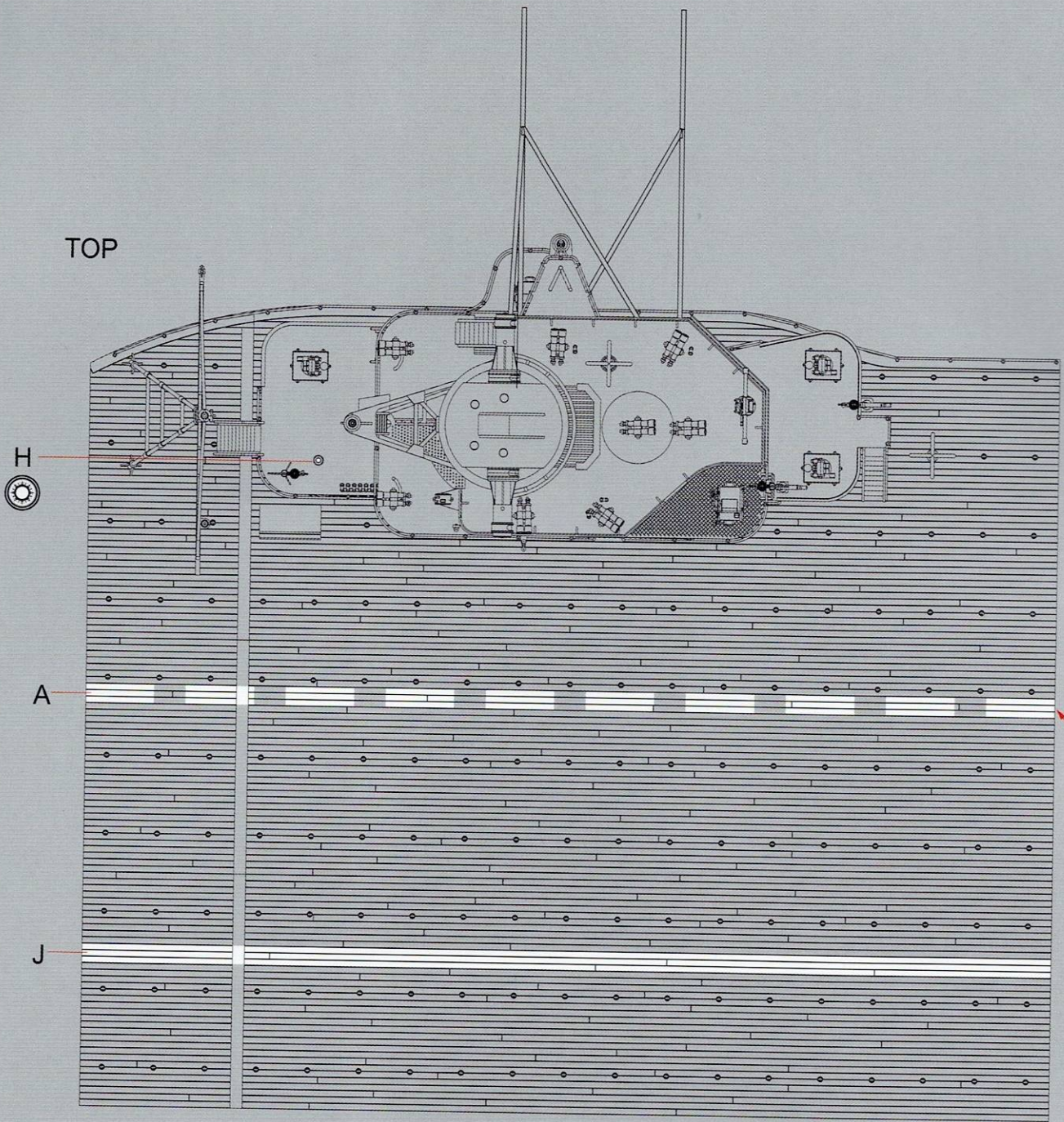


33

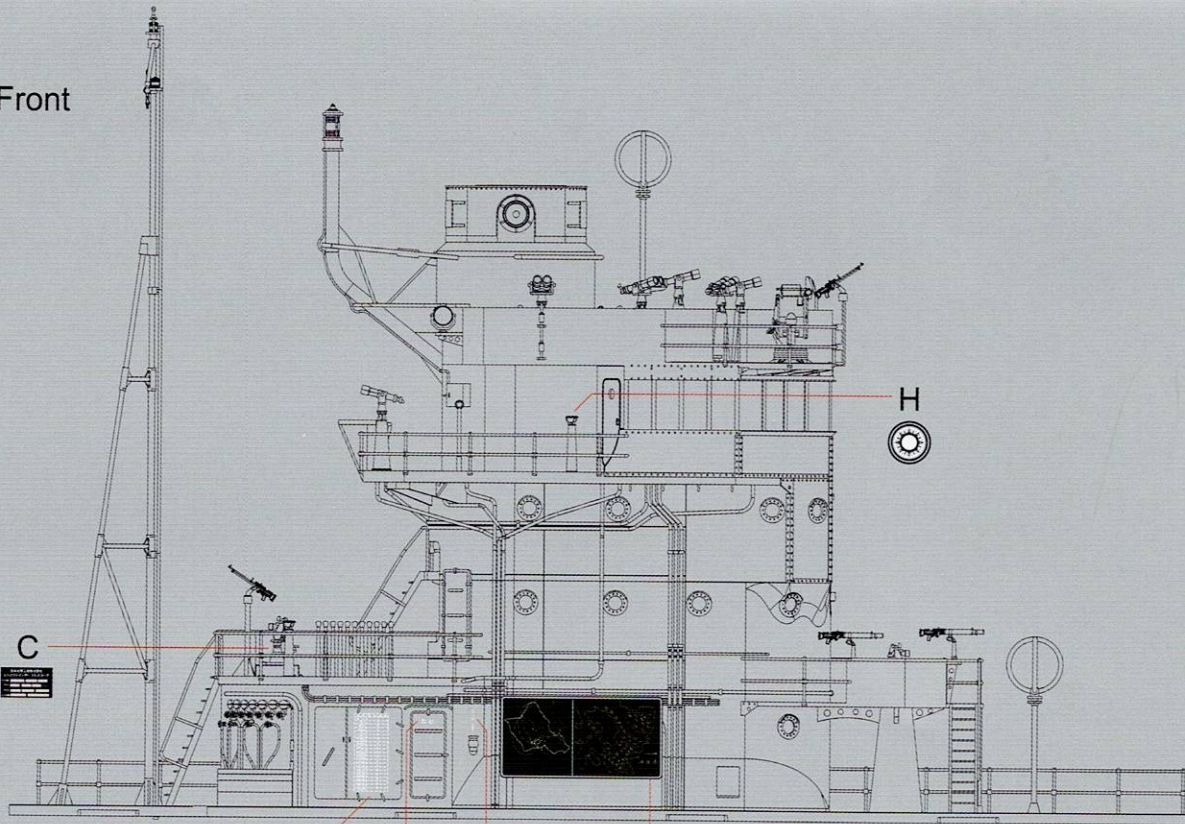




TOP



Front



1	2	3	4	5	6	7	8	9	10
11	12	13	14	15	16	17	18	19	20
21	22	23	24	25	26	27	28	29	30
31	32	33	34	35	36	37	38	39	40
41	42	43	44	45	46	47	48	49	50
51	52	53	54	55	56	57	58	59	60
61	62	63	64	65	66	67	68	69	70
71	72	73	74	75	76	77	78	79	80
81	82	83	84	85	86	87	88	89	90
91	92	93	94	95	96	97	98	99	100

D

E

G

消火栓

カヒ

↓

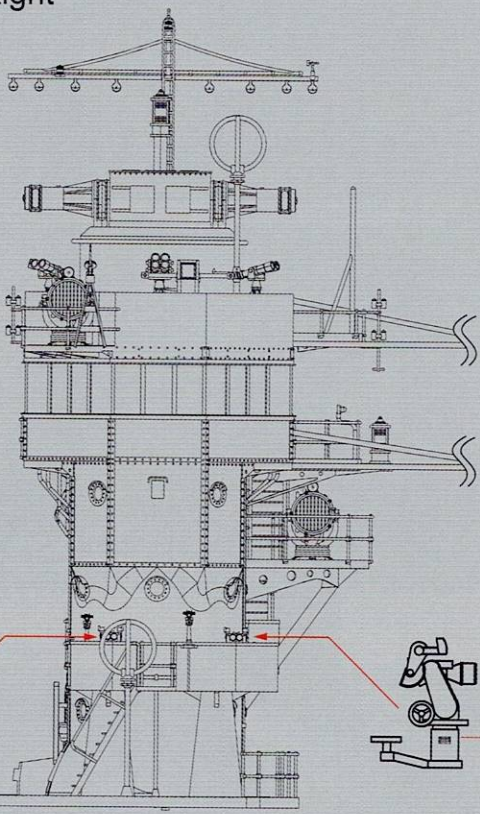
H

B



F

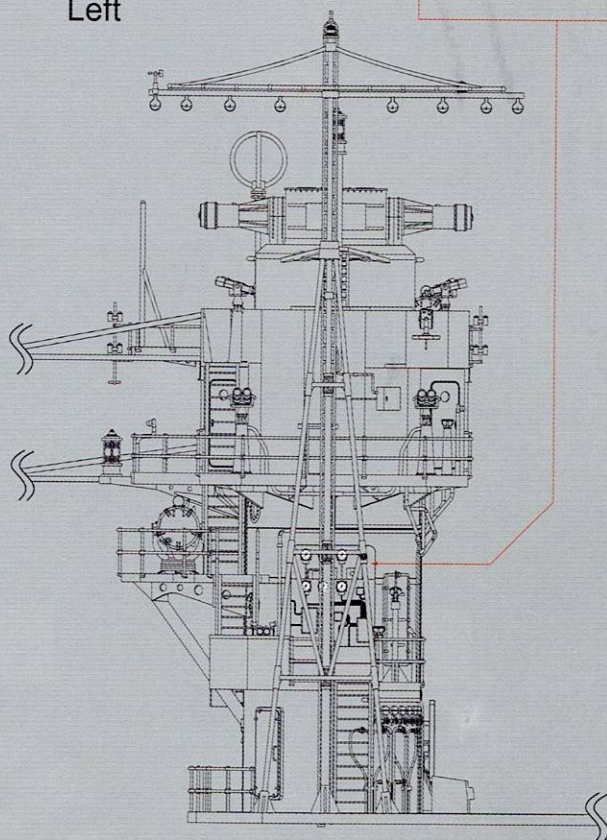
Right



C

C

Left



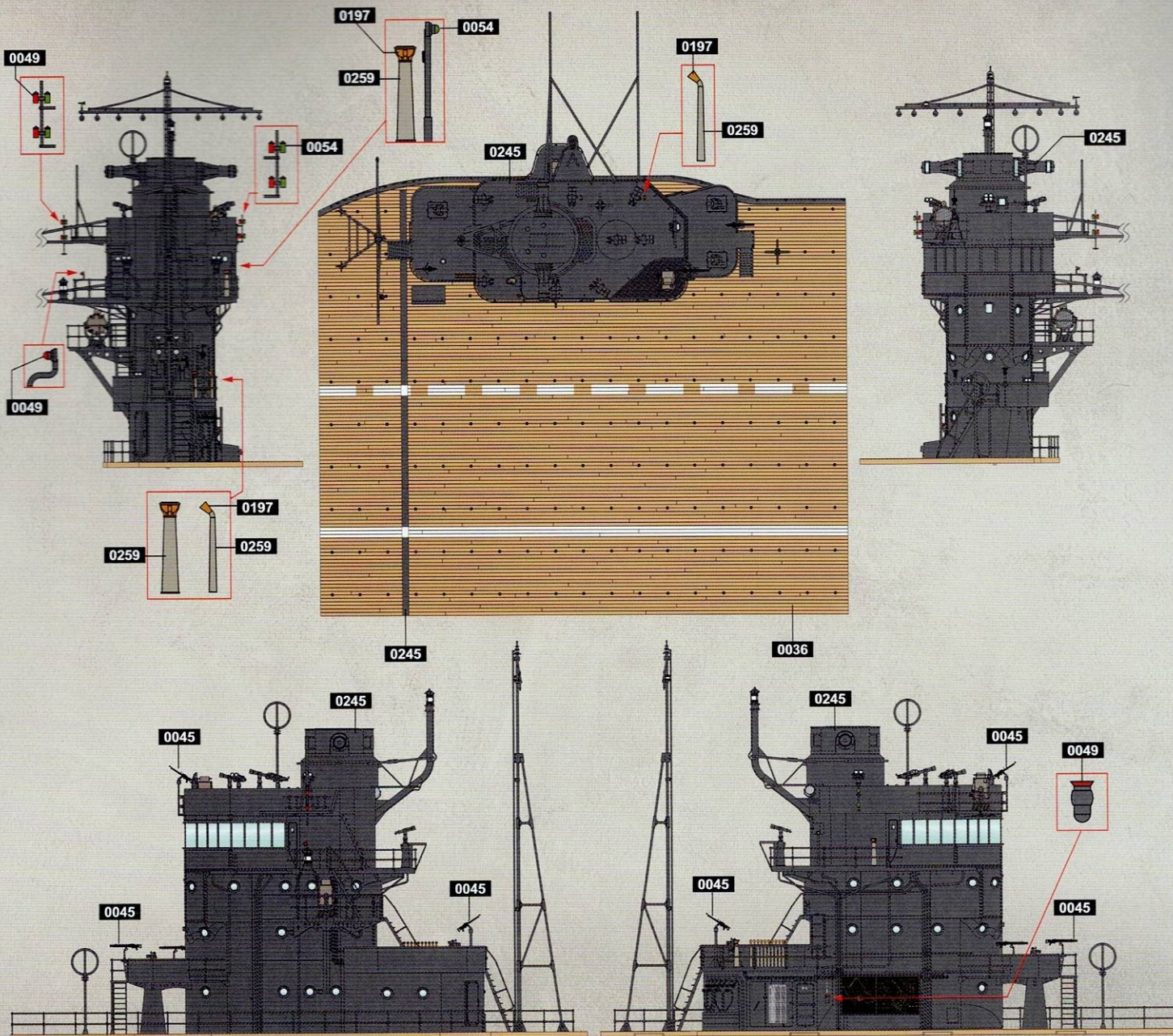
# Akagi

## Aircraft carrier

### PAINTING AND MARKING GUIDE

BORDER MODEL REF: XXXX

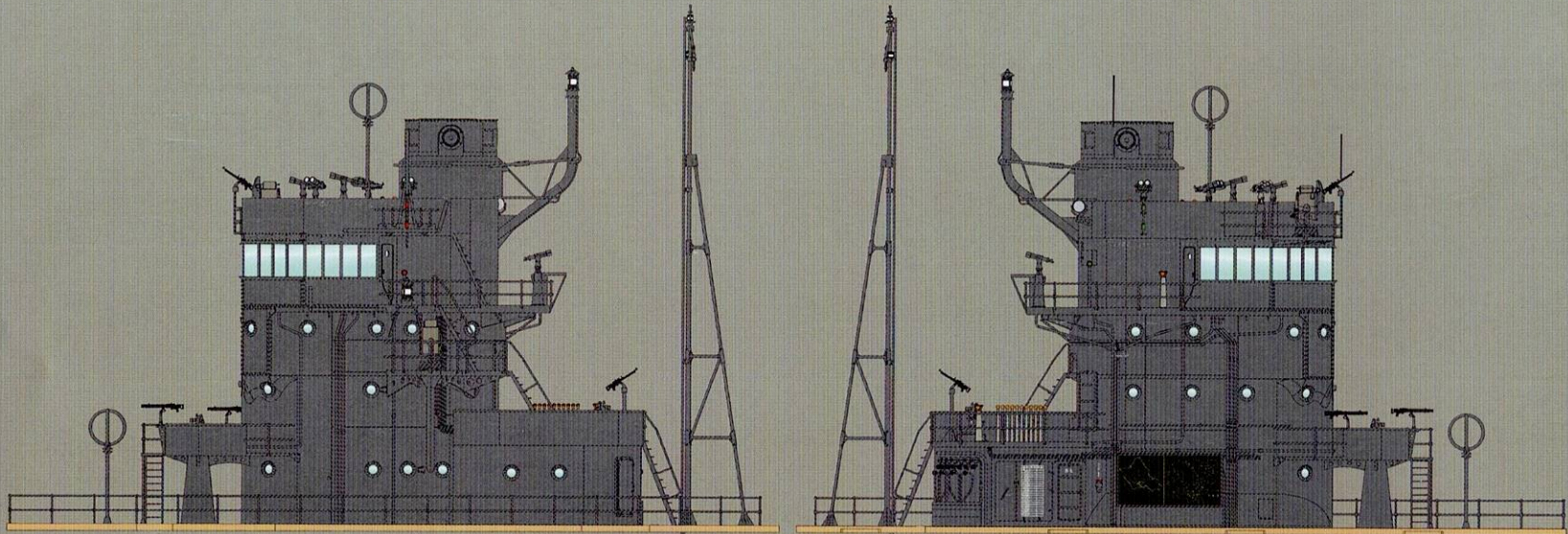
 A.MIG-0245 BS 629 Ocean Grey	 A.MIG-0045 Gun Metal	 A.MIG-0036 Old Wood	 A.MIG-0259 Light Grey Green
 A.MIG-0049 RED	 A.MIG-0197 METALLIC Brass	 A.MIG-0054 Signal Green	



#### WEATHERING STEPS WITH AMMO PRODUCTS

<b>1 GENERAL WASH</b> A.MIG-1010 Neutral Wash	<b>3 FILTER</b> A.MIG-1501 Grey for White	<b>5 DIRT SHADING</b> A.MIG-0853 Dirt Shader	<b>7 OIL</b> A.MIG-3011 Fresh Engine Oil
<b>2 DETAILS HIGHLIGHT</b> A.MIG-0601 Light Grey	<b>4 FUEL</b> A.MIG-1409 Fuel Stains	<b>6 STREAKING</b> A.MIG-1254 RUST	

Border



WWW.BORDERMODEL.COM