



# FORD C-900 REFUSE TRUCK

WITH LOAD-PACKER BODY AND GATE BY **GarWood**

READ THIS BEFORE YOU BEGIN  
Cement all parts unless otherwise indicated.

Look over this instruction sheet carefully before you begin building. Follow the assembly instructions and "test-fit" the parts without cementing. This will familiarize you with the location of the parts.

For the best results, the various sub-assemblies and components should be painted before any "chrome" parts are attached. For example: When attaching "non-chrome" body accessories, it is best to cement them in place and paint the body as a unit.

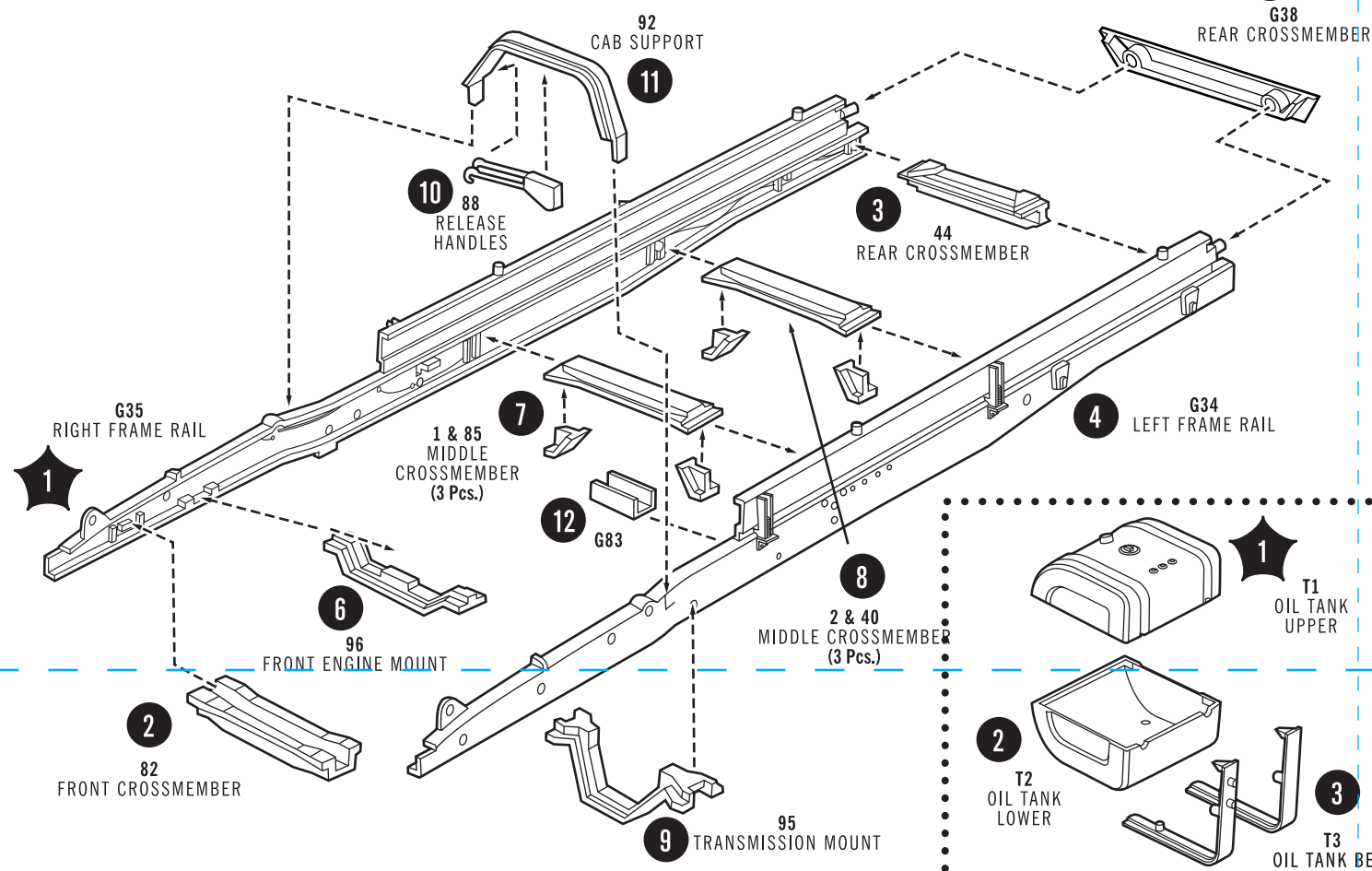
AMT® kits are molded from the finest High-Impact Styrene plastic. Use

only point and cement made for Styrene. Trim excess plastic from parts before joining. When attaching "chrome" parts, scrape plating away where parts are to be joined. Use just enough cement to join parts, and be careful not to smear cement on exposed surfaces.

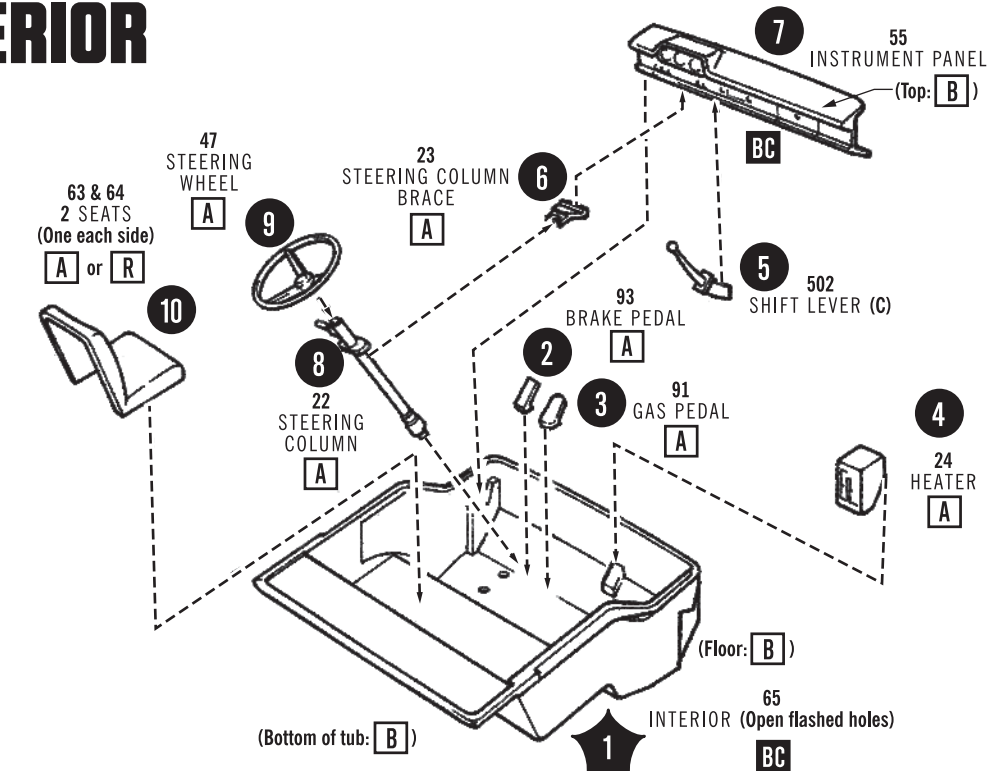
Built according to the instructions on this sheet, you should have no trouble assembling your kit. Just FOLLOW THE NUMBERS, as parts are numbered in order of assembly. (C) INDICATES "CHROME" PARTS.

## 3. CHASSIS FRAME

NOTE: Assemble all parts together, then paint [A] as a unit.

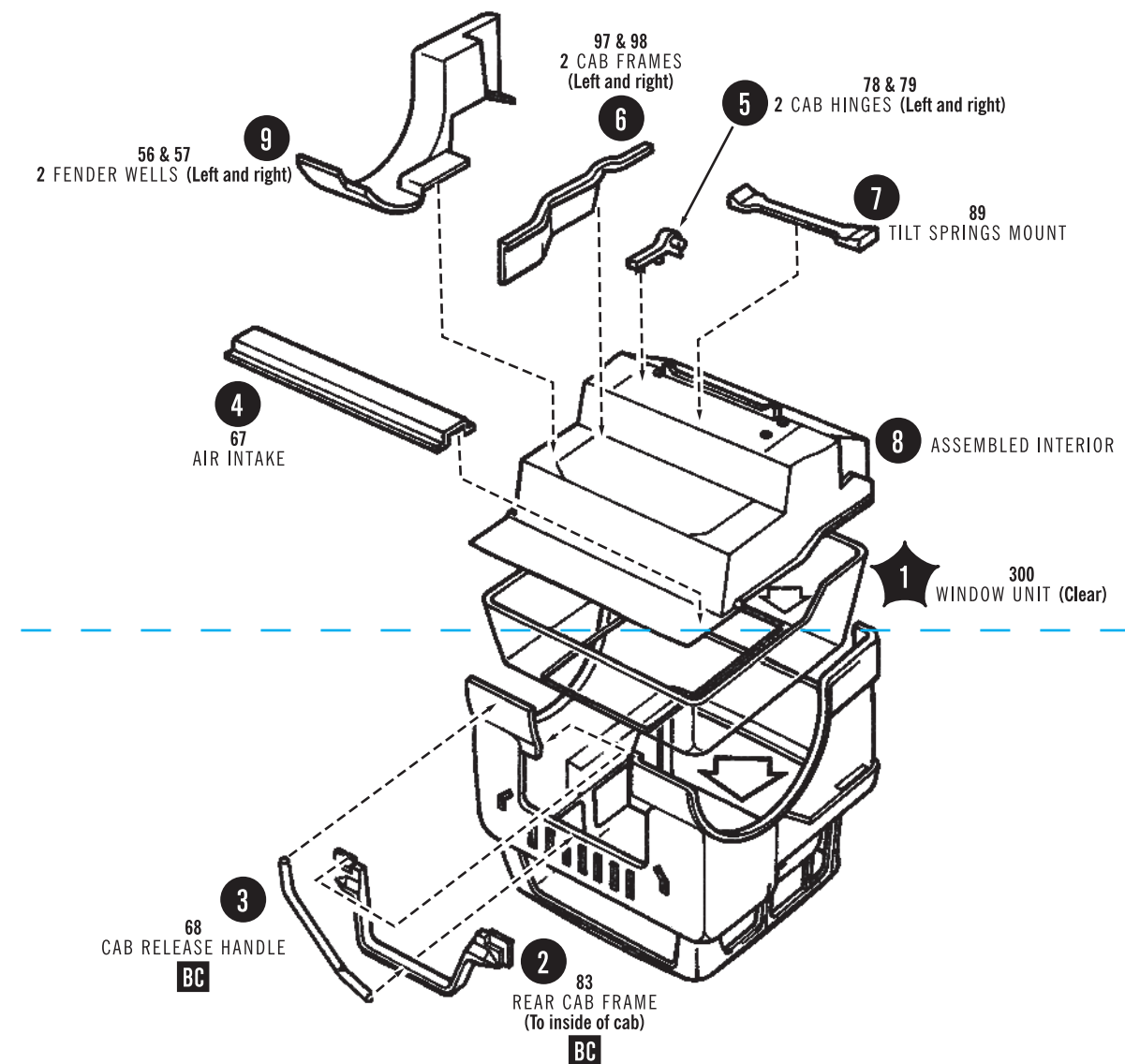


## 5. INTERIOR



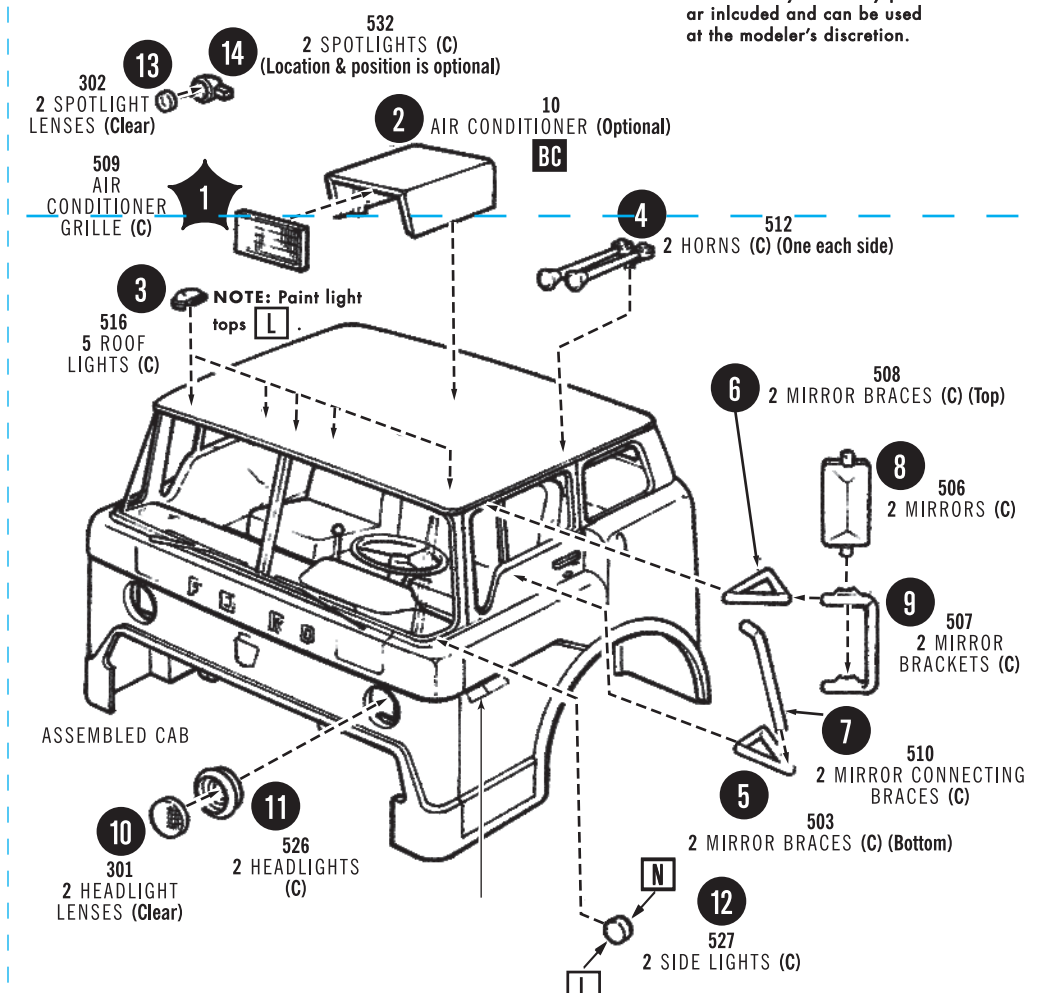
## 6. BASIC CAB

NOTE: Paint parts in steps 4 thru 7 and 9 [B]. Paint weatherstripping around front windshield on body [B].

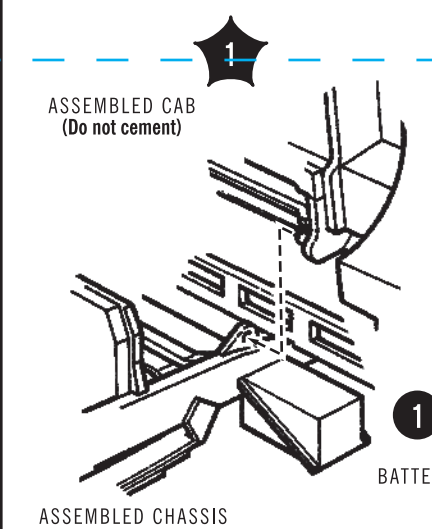


## 7. CAB

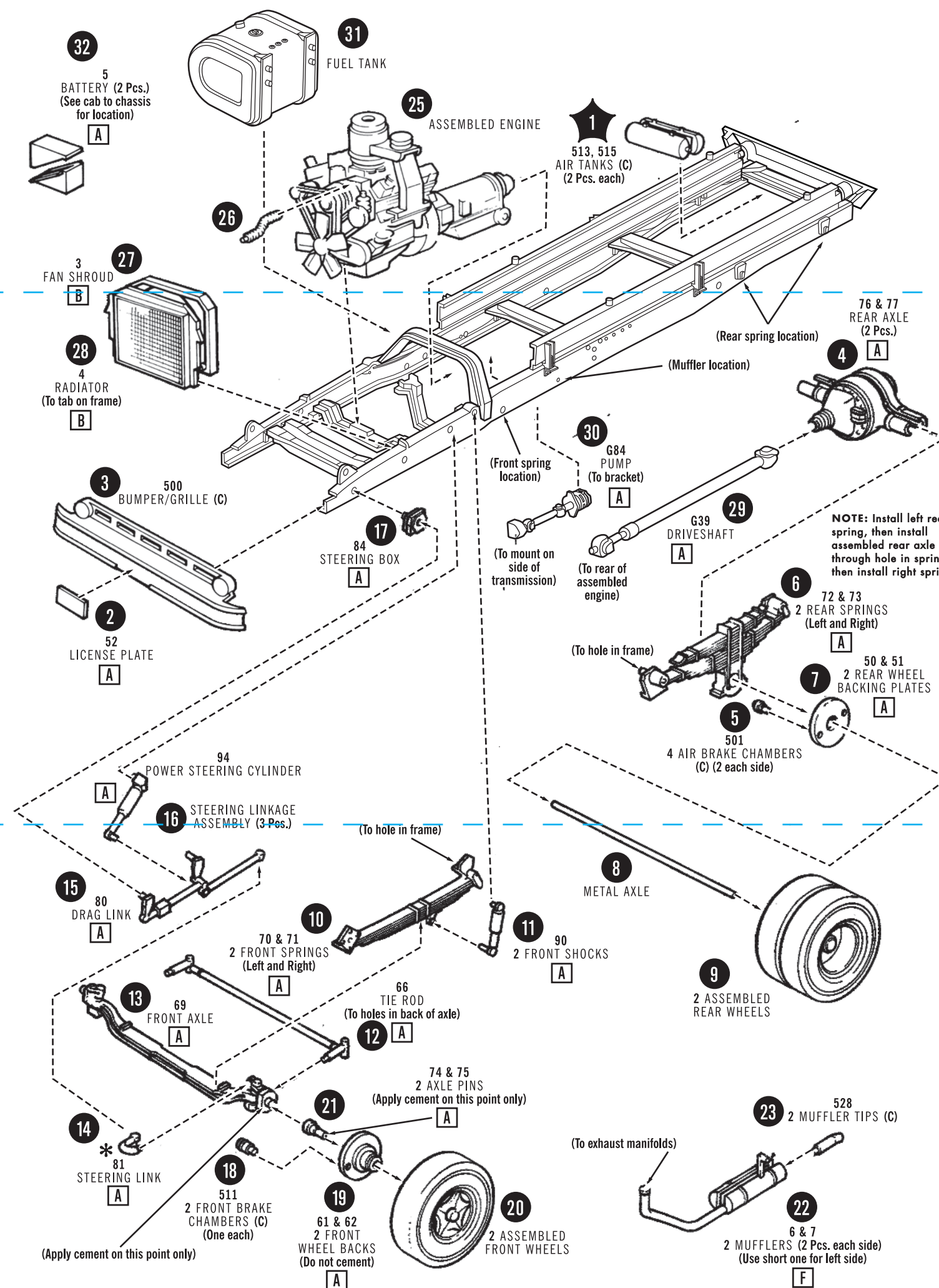
NOTE: Many accessory parts are included and can be used at the modeler's discretion.



## 8. CAB TO CHASSIS



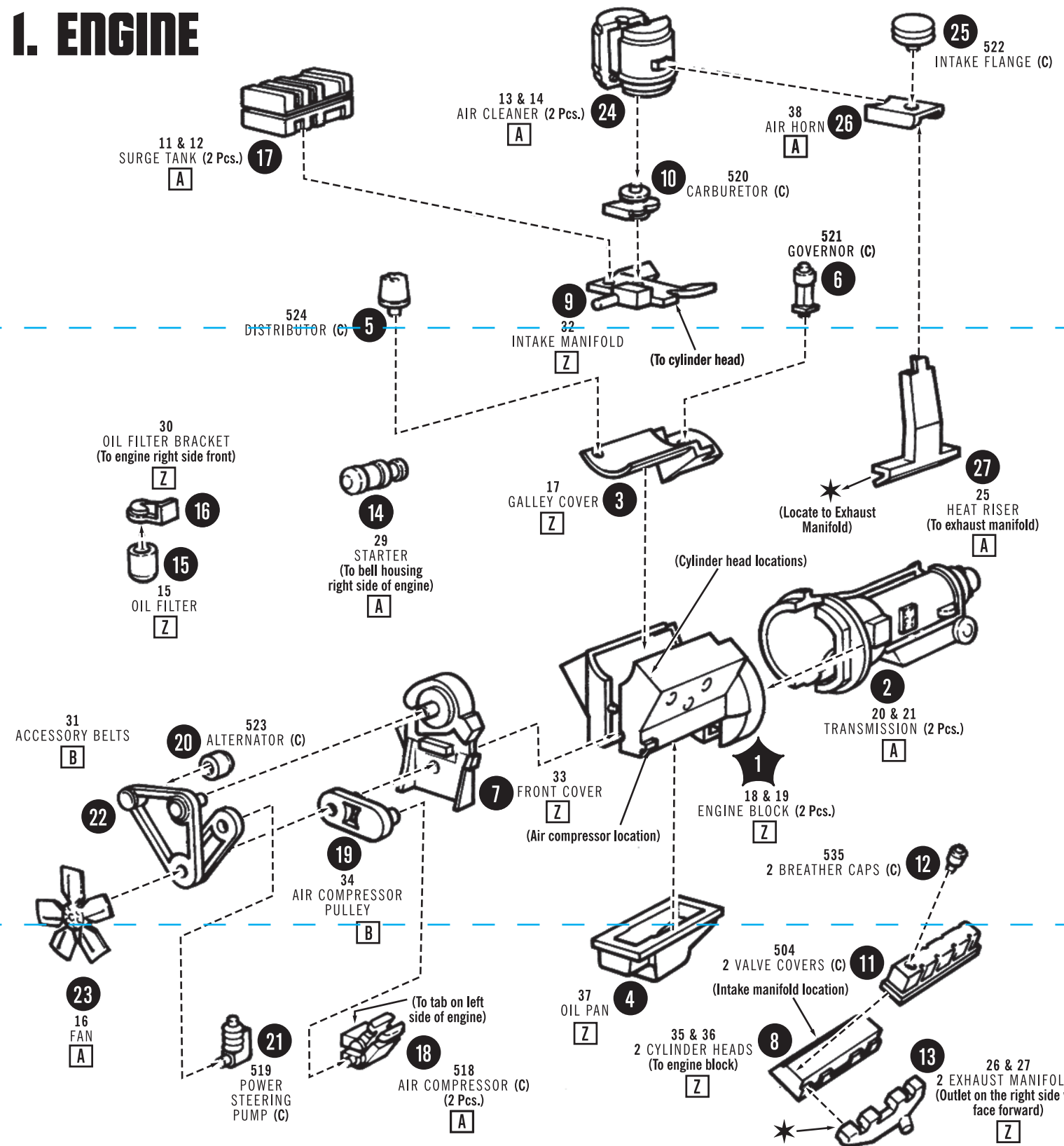
## 4. CHASSIS



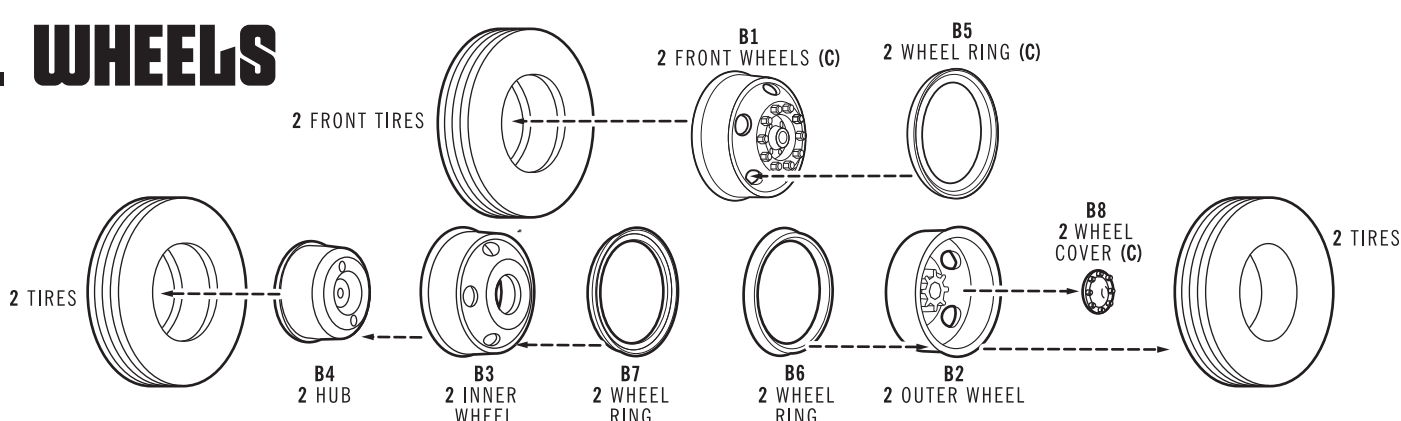
## PAINT COLORS

- |                            |                       |                      |                      |                       |
|----------------------------|-----------------------|----------------------|----------------------|-----------------------|
| [A] Black                  | [H] Aluminum          | [O] Transparent Red  | [V] Dark Blue        | [BC] Body (Cab) Color |
| [B] Flat Black             | [I] Steel             | [P] Orange           | [W] Transparent Blue | [S] Semi-Gloss        |
| [C] Semi-Gloss Black       | [J] Brass             | [Q] Yellow           | [X] Lt. Green        | [▲] Gloss             |
| [D] White                  | [K] Gold              | [R] Tan              | [Y] Med. Dark Brown  | [▲] Metallic          |
| [E] Flat White             | [L] Amber             | [S] Wood Grain Brown | [Z] Ford Engine Blue |                       |
| [F] Silver                 | [M] Transparent Amber | [T] Lt. Blue         | [CC] Chassis Color   |                       |
| [G] Chrome (Bright Silver) | [N] Red               | [U] Med. Blue        | [IC] Interior Color  |                       |
- It is recommended that you search the Internet for additional color references and details.

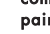
## 1. ENGINE

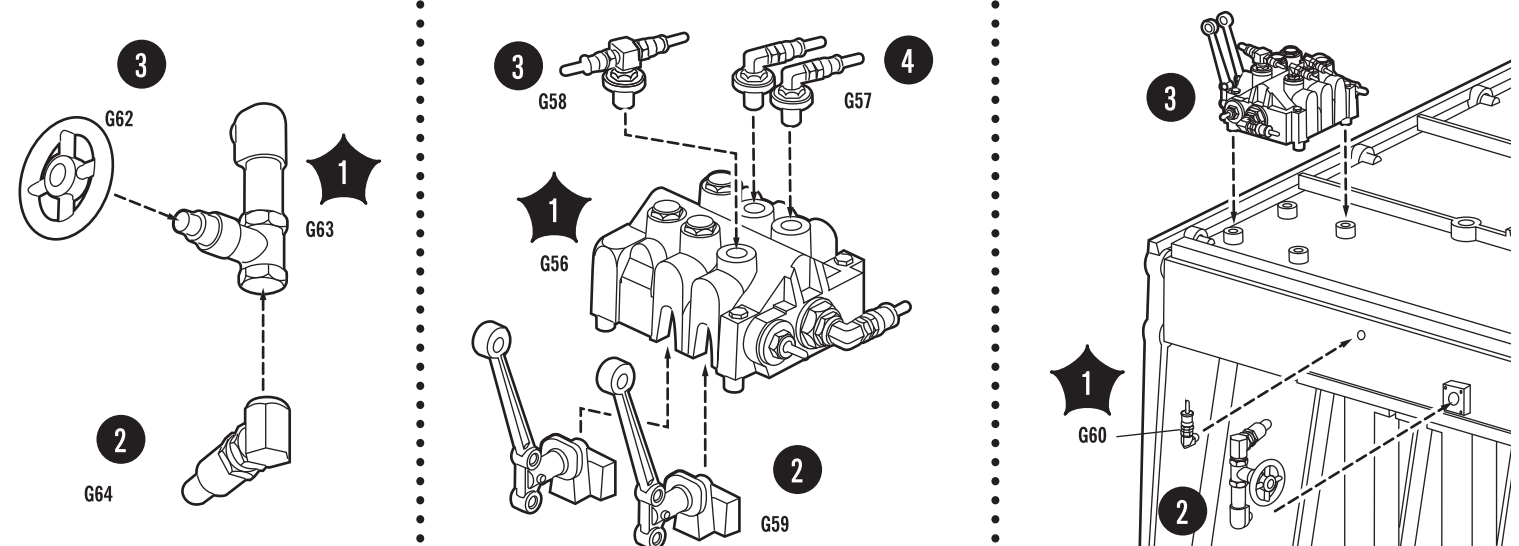
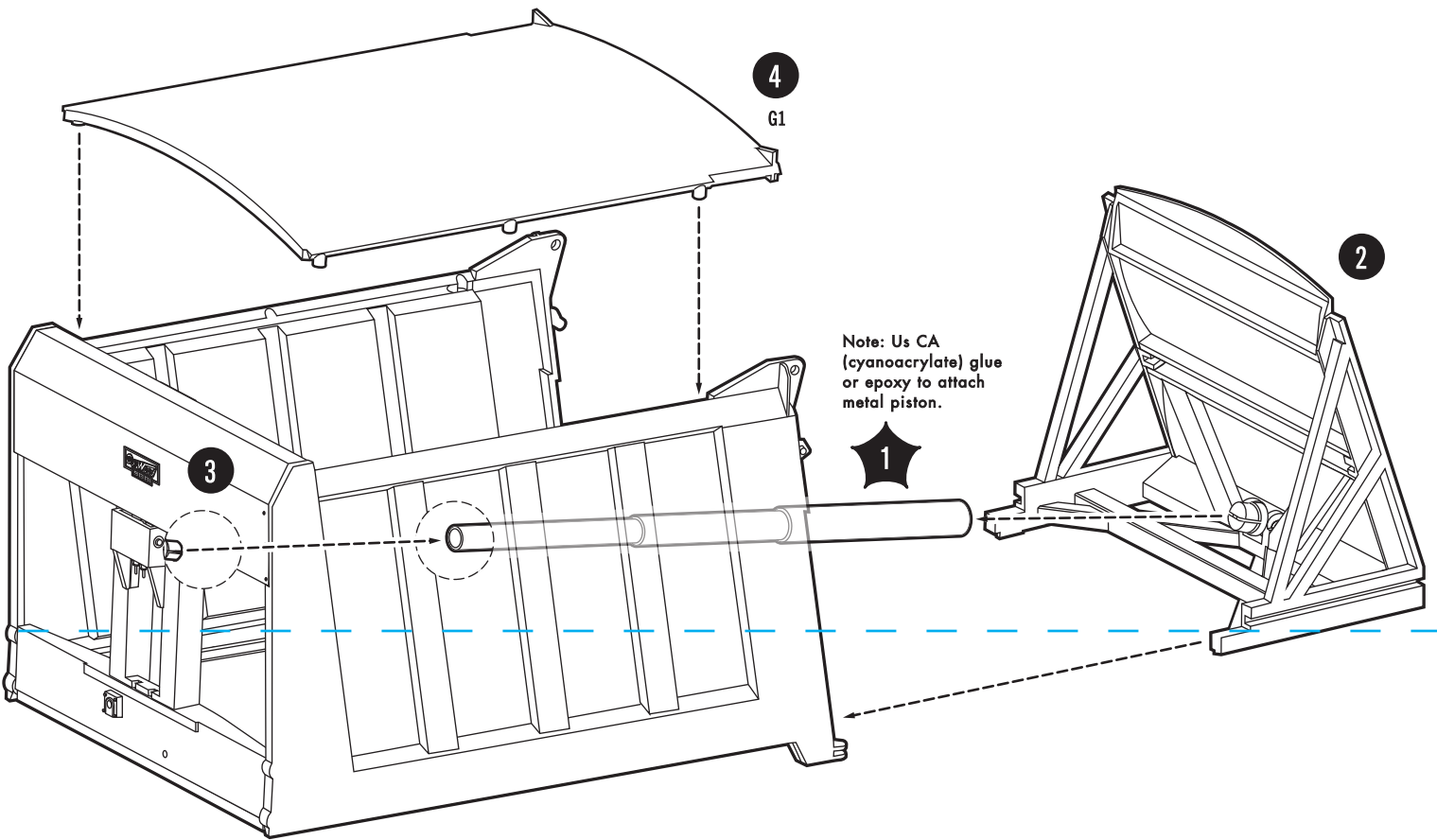
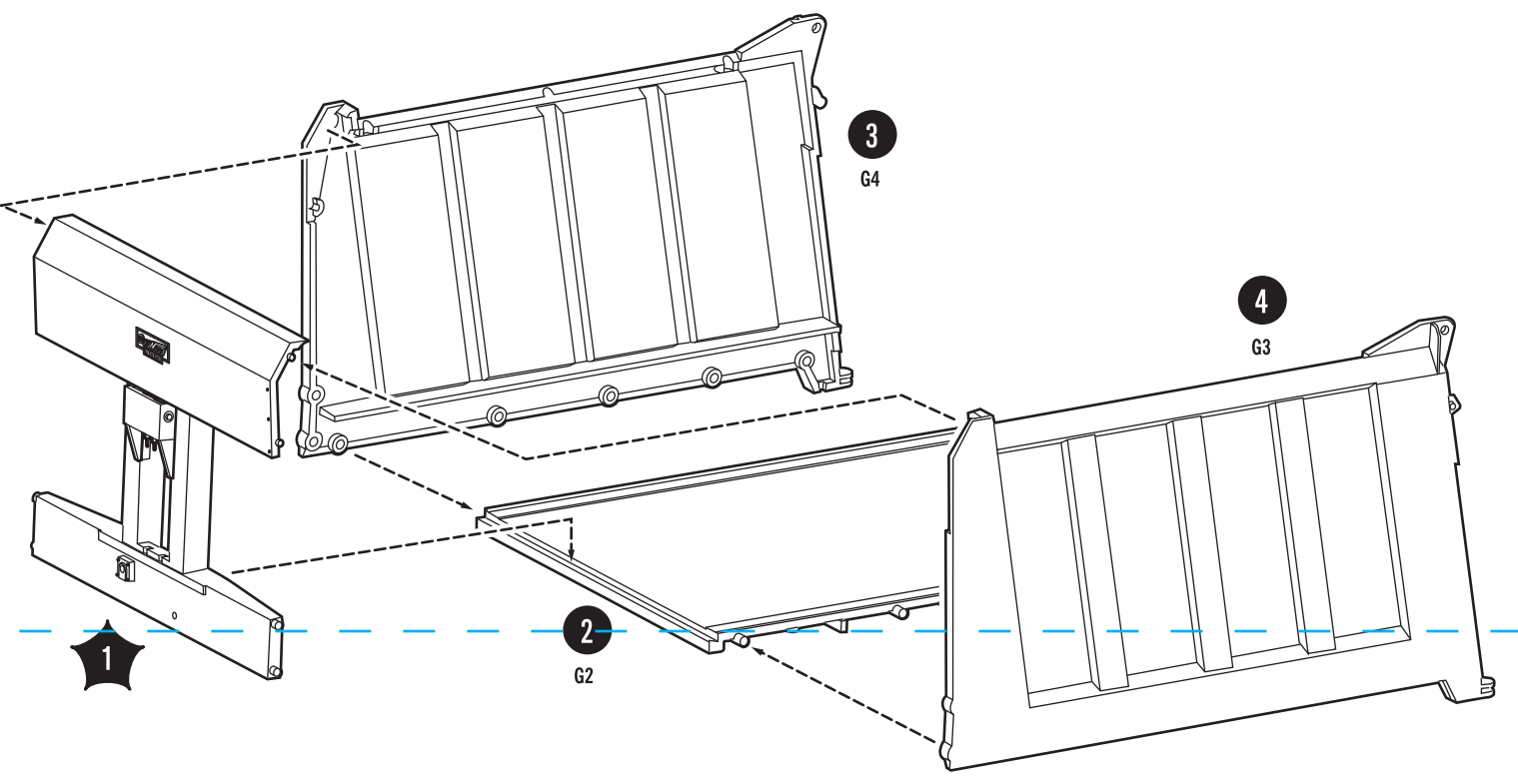
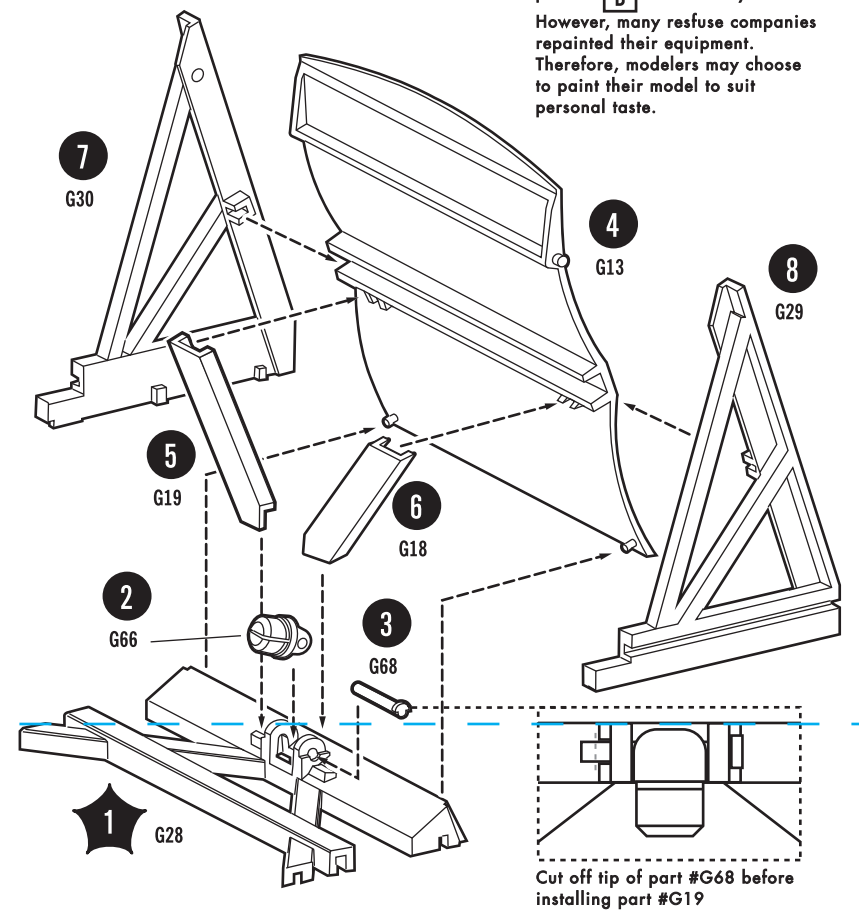


## 2. WHEELS

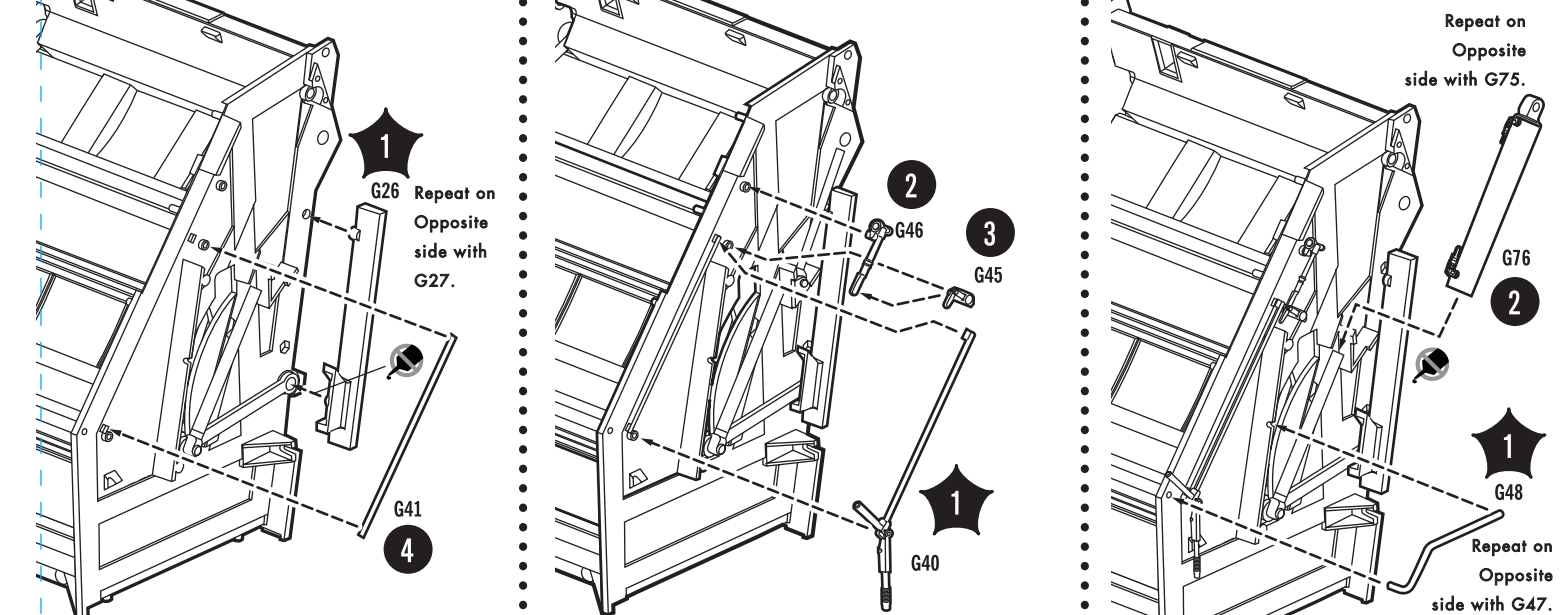
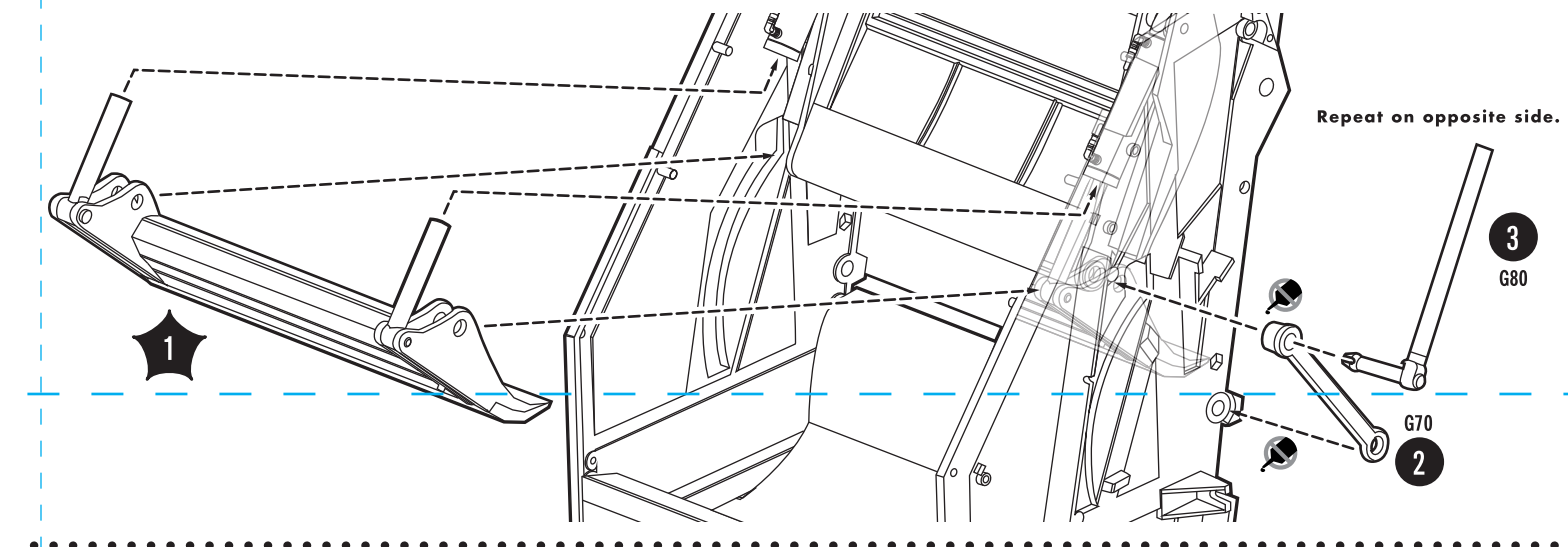
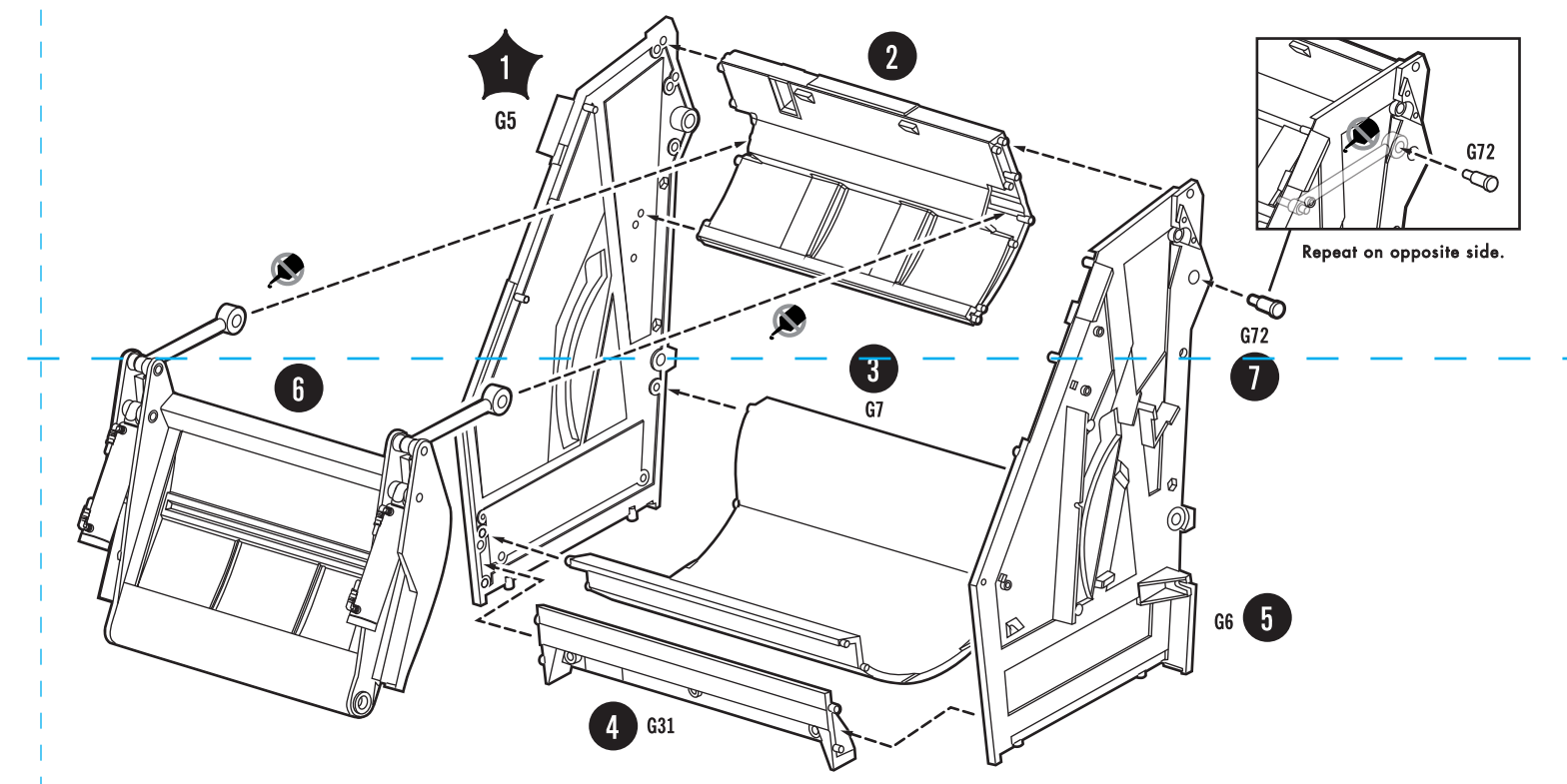
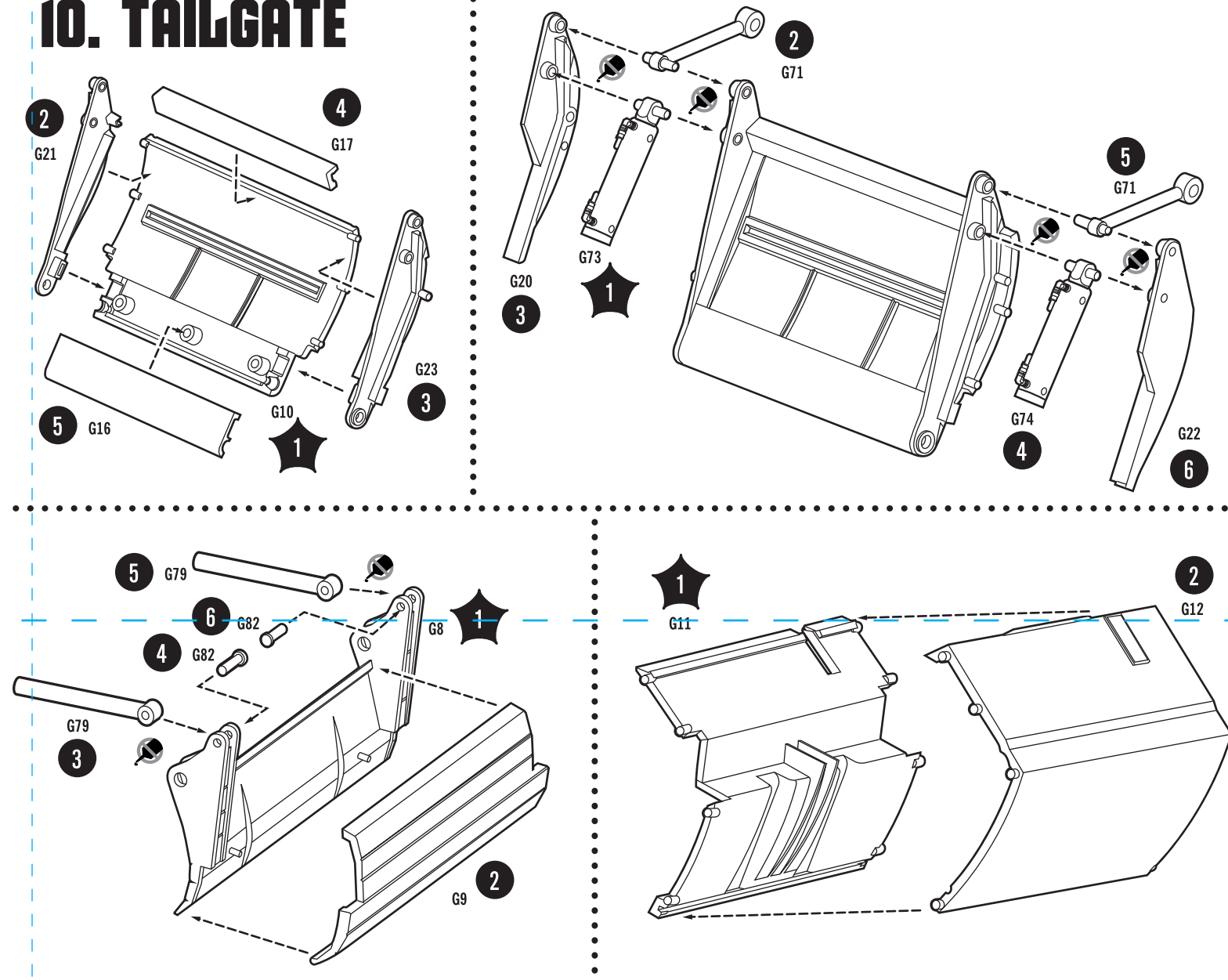


# 9. COMPACTOR

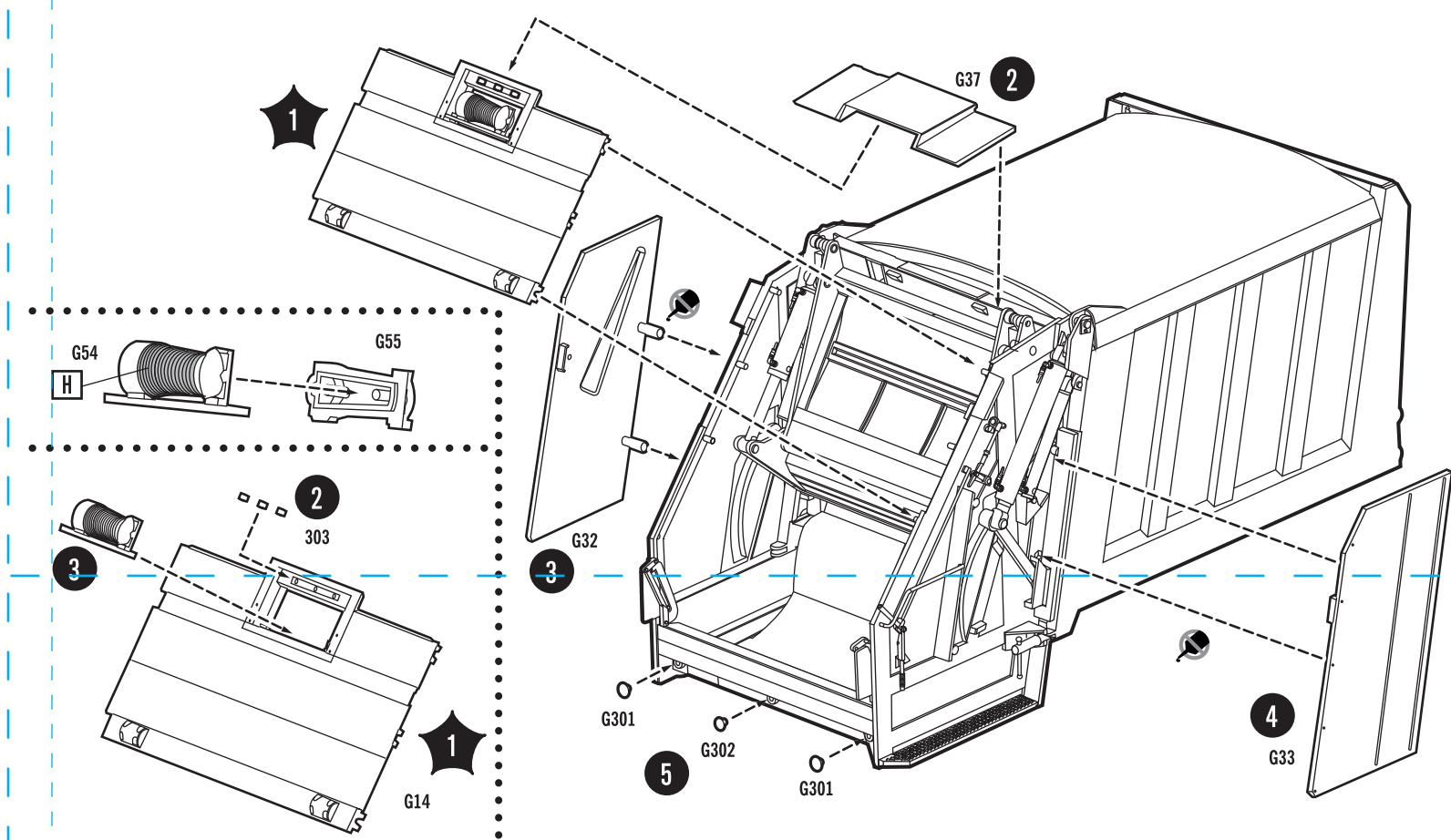
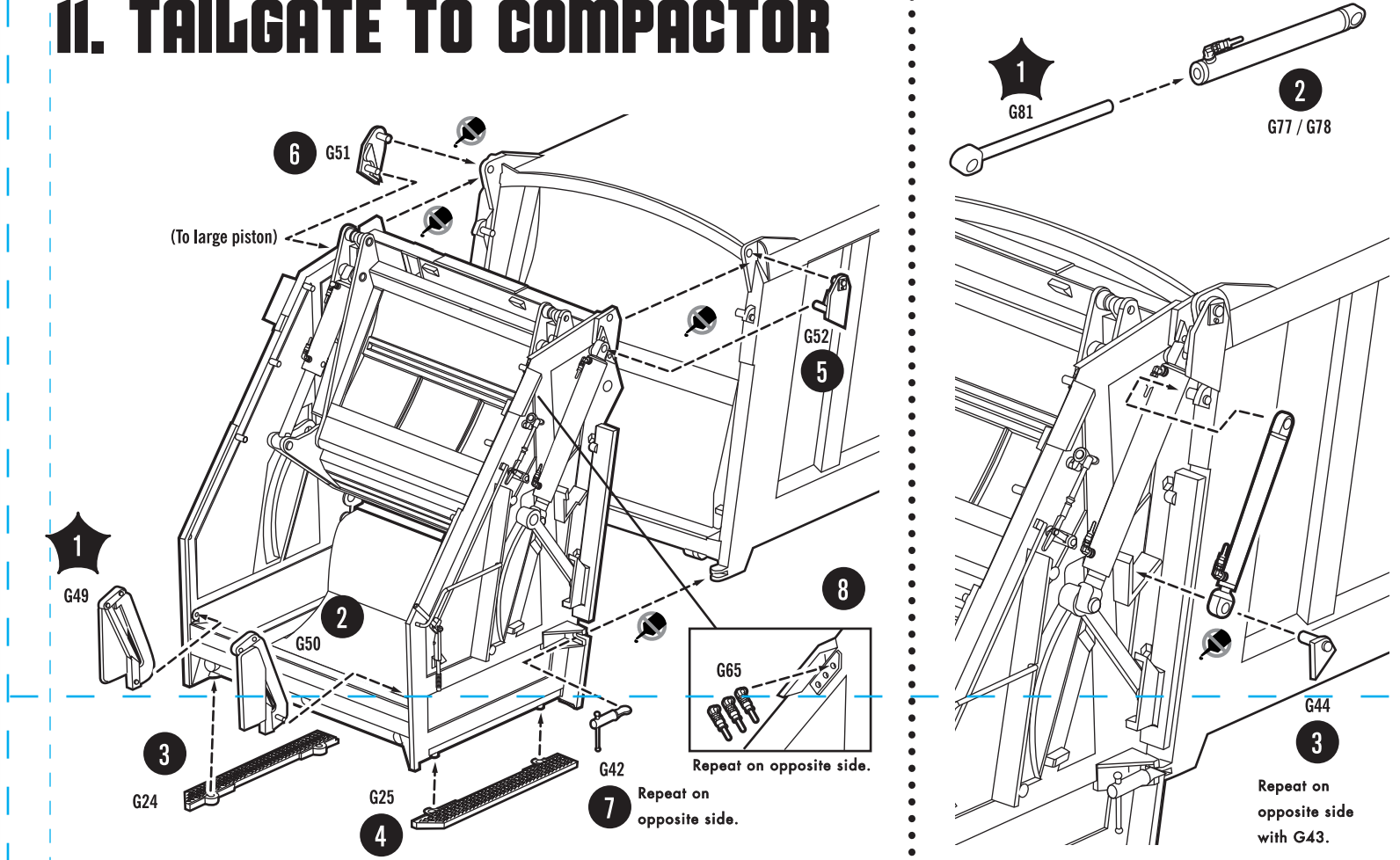
NOTE: The entire GarWood compactor and tailgate were painted  when factory new. However, many resque companies repainted their equipment. Therefore, modelers may choose to paint their model to suit personal taste.



# 10. TAILGATE



# 11. TAILGATE TO COMPACTOR



# 12. COMPACTOR TO CHASSIS

