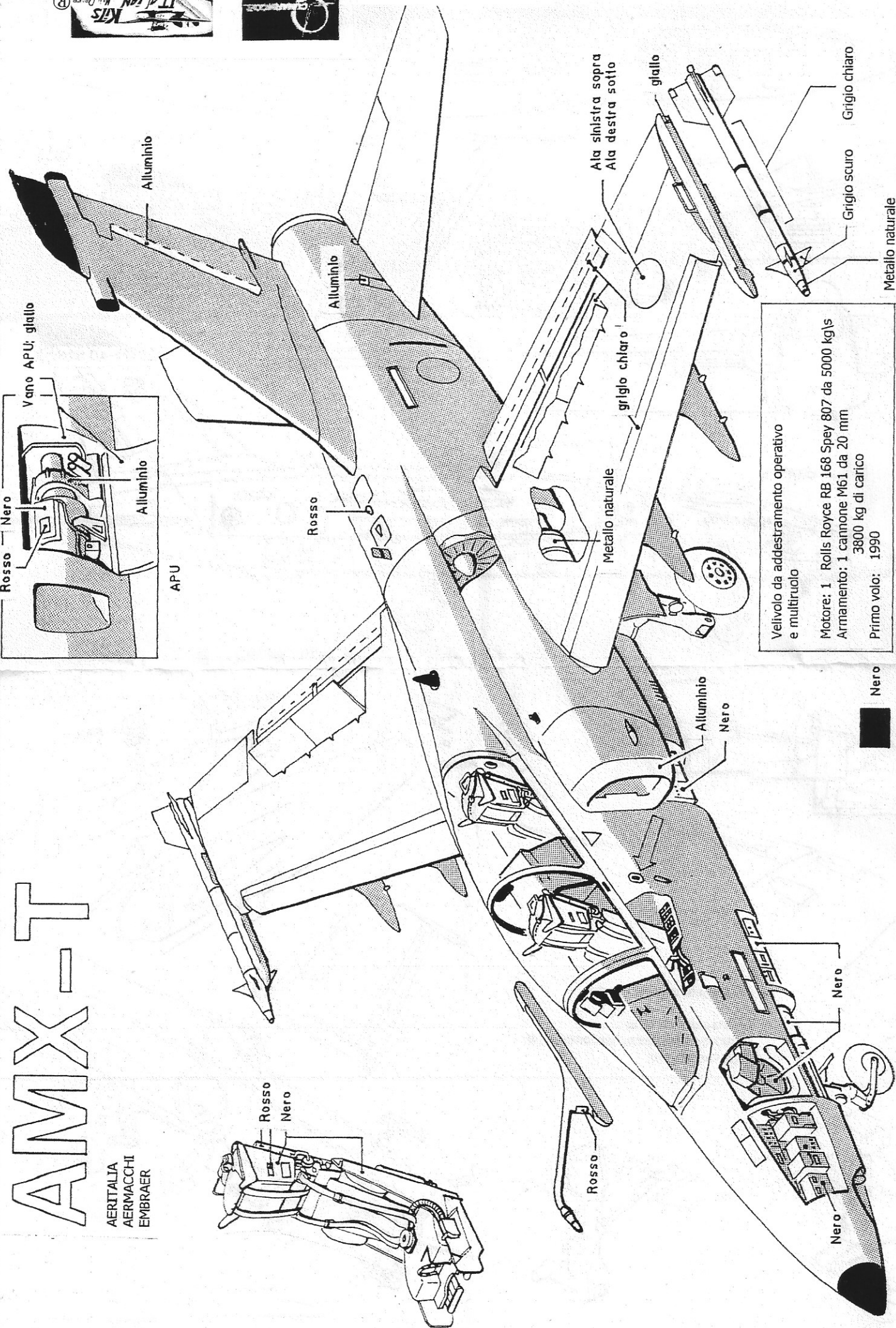
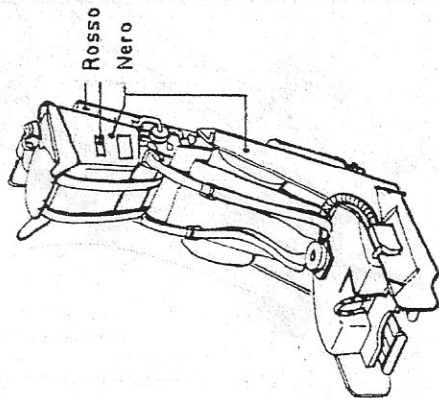
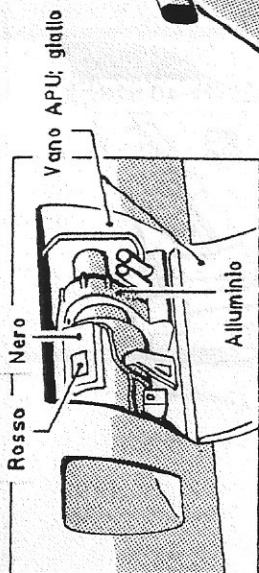


AMX-T

AERITALIA
AERMACCHI
EMBRAER



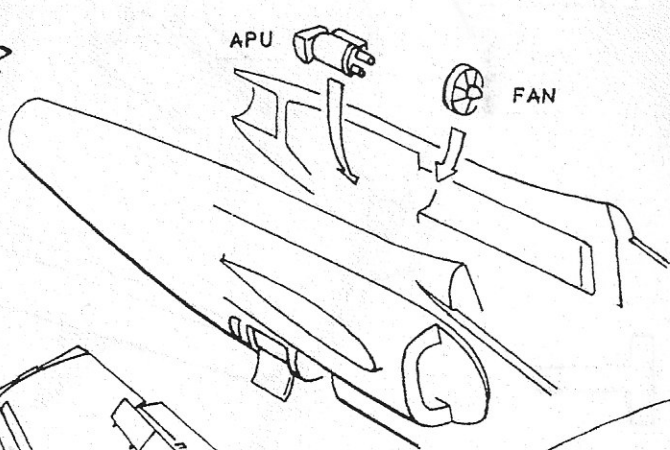
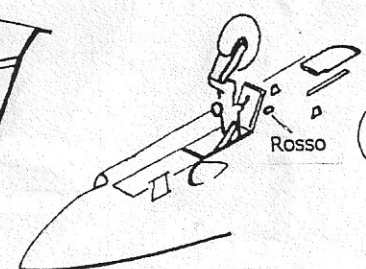
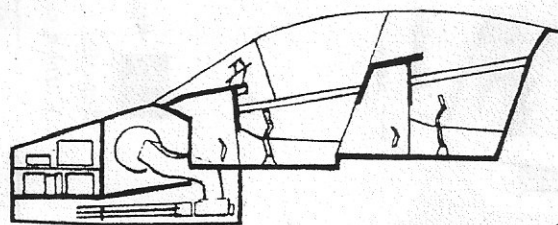
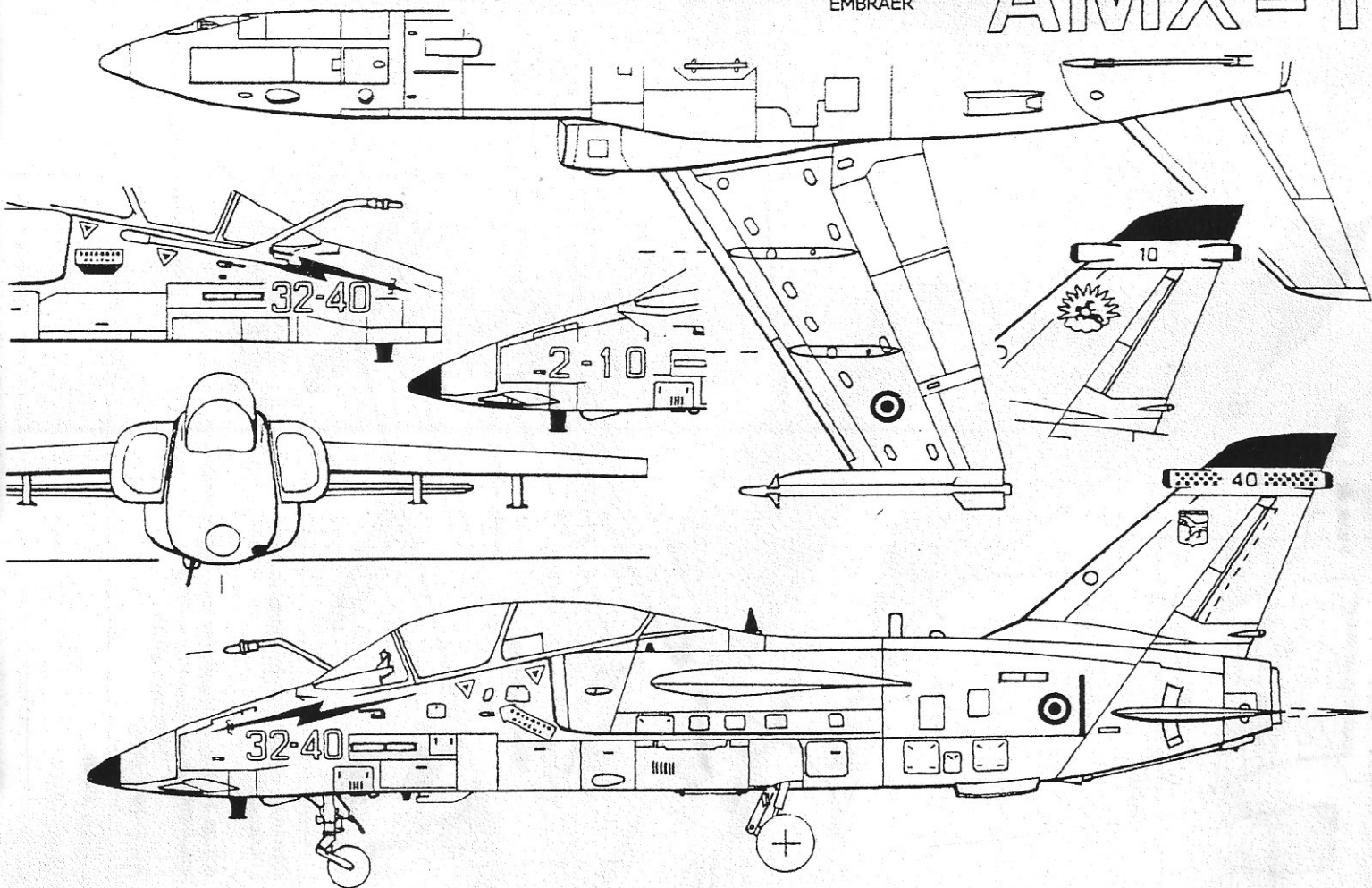
Velivolo da addestramento operativo e multiruolo
Motore: 1 Rolls Royce RB 168 Spey 807 da 5000 kg/s
Armamento: 1 cannone M61 da 20 mm
3800 kg di carico
Primo volo: 1990

Nero

Superfici esterne: grigio medio
Interni e carrelli: grigio chiaro

AERITALIA
AERMACCHI
EMBRAER

AMX-T



Consigliamo l'impiego di:

Colle cianoacriliche
Stucco poliesteri a due componenti
per carrozzeria

