

F-4E HAF "Classic" conversion set

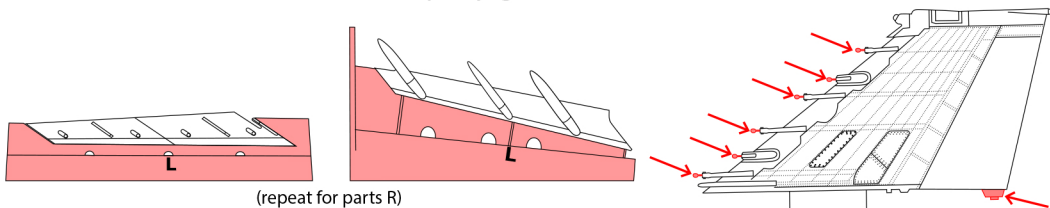
Product code :48-001-R

Designed for the Zoukei-Mura kit in 1:48

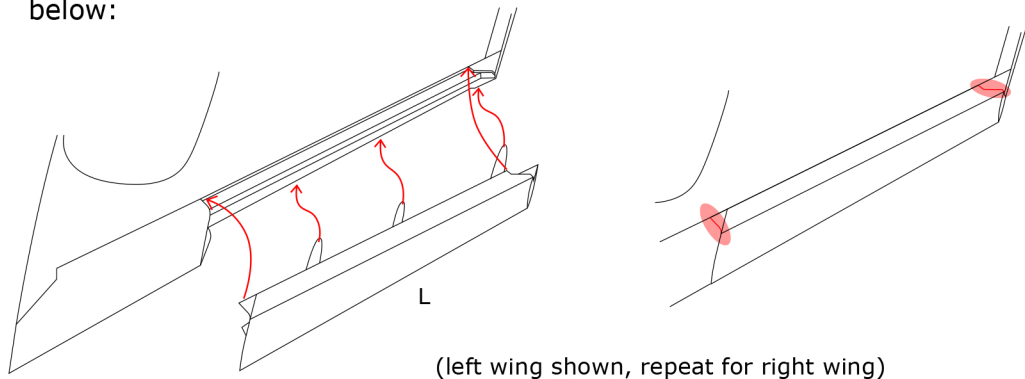
Contents produced by Hypersonic Models



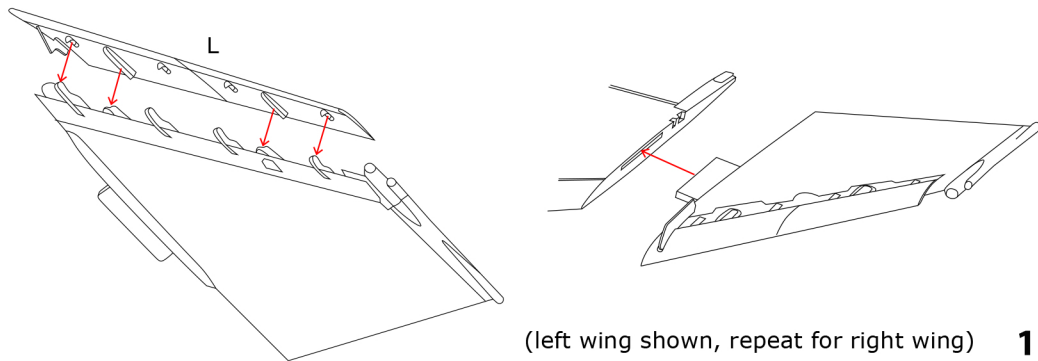
Wash contents in soapy water or wipe down with isopropyl alcohol (except clear part!). Remove the resin parts from the casting block by lightly scoring the parting line with a sharp (new) hobby knife blade. Take care not to breathe in resin dust. Glue with CA or epoxy glue.



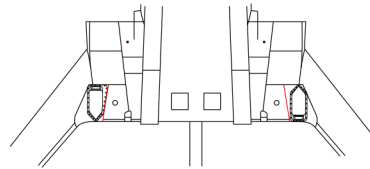
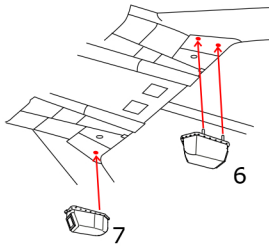
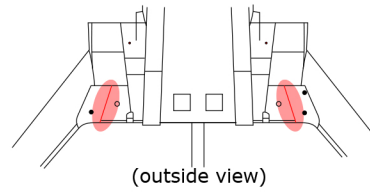
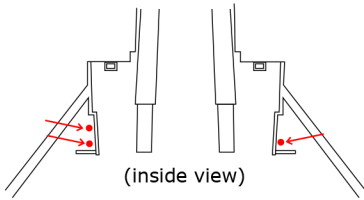
1. Insert main wing slat and hinge part into the joint wing halves (as per ZM instructions step 023). Eliminate the short panel lines on top as indicated below:



2. Add outer slats to outer wings in the retracted position. Install the outer wings as per ZM instructions step 023.

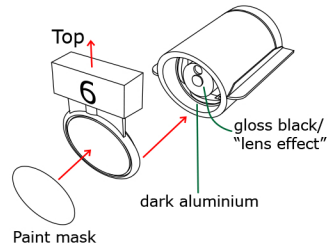
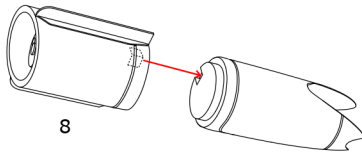


3. Strike cameras: Open three of the mounting holes (NOT all four!) in the lower wing part (G3). The two panel lines indicated aren't in the correct position. You may fill and correct them to match the strike camera outlines. Alternatively, use ZM kit parts M25/26 (but accuracy and detail aren't quite as good).

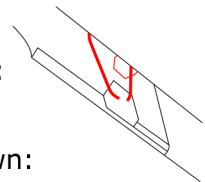


4. TISEO: Assemble front and rear resin parts 8 and 11, there is a key for orientation alignment. Paint the lens and mechanism inside. You may want to dip the clear outer glass in clear acrylic varnish to improve shine and prevent glue fogging.

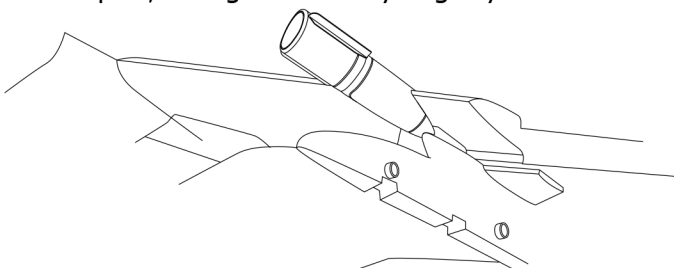
Top Tip: don't remove the casting block until the glass is glued in place. The casting block is attached at the top edge of the glass. Trim off the block once the glass is glued in place. Apply the paint mask from the grey masking material provided.



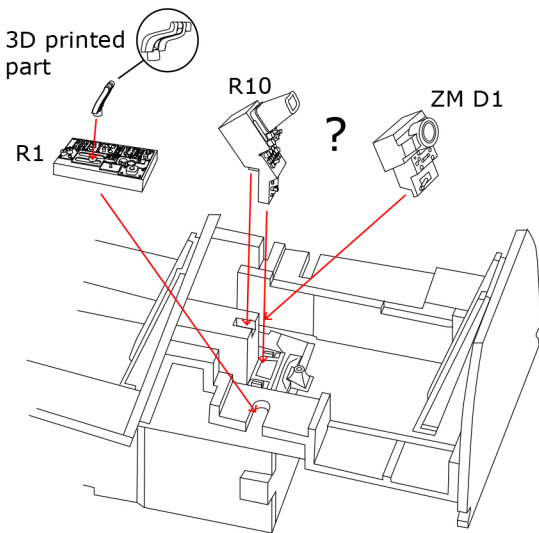
Sand off the raised detail at the leading edge of the bottom left wing and remove panel line:



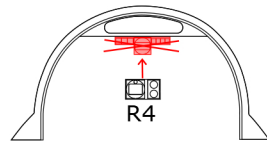
Temporarily fit the left inboard pylon to the wing to align the TISEO pod, straight and very slightly nose down:



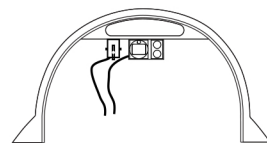
5. Gun muzzle: Use ZM kit parts M 33/34 for the longer "Midas" gun muzzle.
6. Chaff/Flare: Use ZM kit parts M 4,5,6,18,19,22,23 on the inboard pylons.
7. Cockpit: Replace the left hand console with resin part 1. Use the 3D printed throttle lever on part 1. For the radar scope you can either use Zoukei Mura kit part D1 or use resin part 10, please check your references.



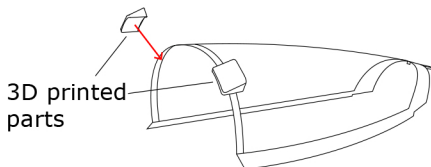
Under the middle canopy remove the detail from ZM part D5 and replace it with resin part 4.



Alternatively, use parts from the Hypersonic Models canopy detail set HMR 48016-3.

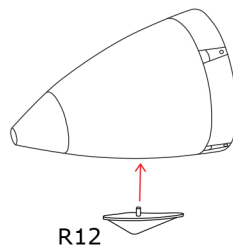
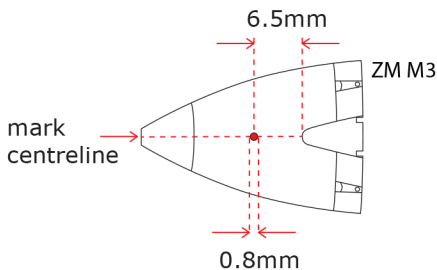


8. Rear view mirrors: The RSO cockpit doesn't have internal mirrors. Use the 3D printed parts externally, applied to the forward frame of the aft canopy. Note: The forward edge of the mirrors overlap the central canopy frame!



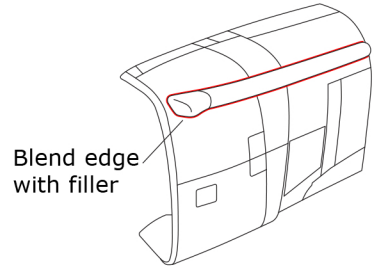
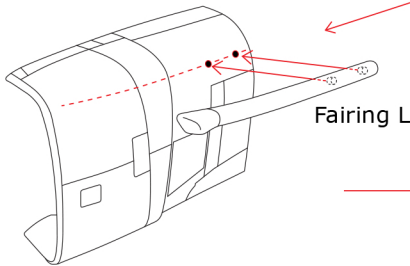
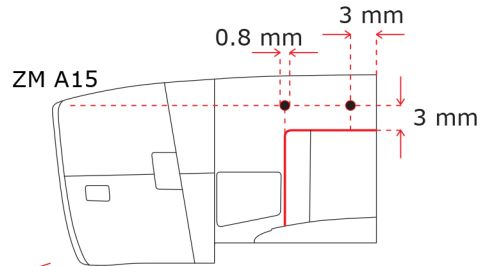
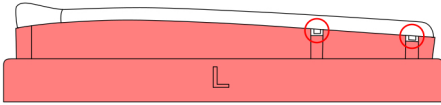
9. DIAS system:

Radome: Use a pencil or tape and mark the centreline on the underside of ZM kit part M3. Drill a 0.8mm hole as shown and install resin part 12.



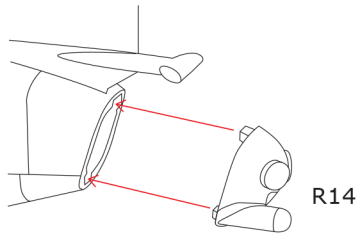
Intakes: Drill two holes into the intakes (ZM parts A8 and A15) as shown (this area will be hidden inside by the intake duct). The panel line marked red is the main alignment reference. Install the fairings R & L as straight and even as possible. Fair in the joint with some filler.

Take care not to cut off the mounting pins when removing the fairings L & R from the casting block

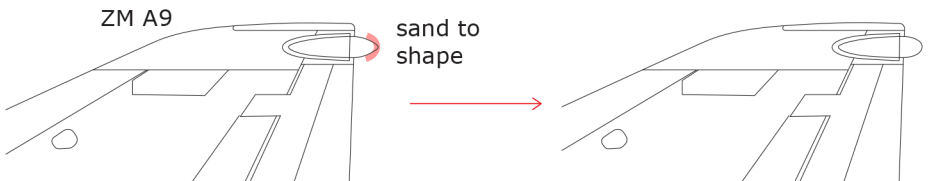


Left intake shown, repeat for right intake (ZM A8 and Fairing R)

Tail: Use resin chute cap resin part 14 in place of the kit part.

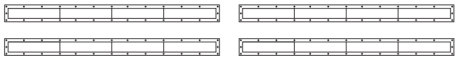


Sand the rear facing fin cap sensor on ZM part A9 to a more rounded shape as shown:



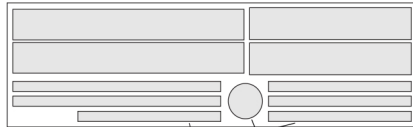
10. Formation "slime" lights.

Vertical stabiliser l/r (+ 2x spare)



forward and centre fuselage l/r (+ 2x spare)

Slime light transfer sheets



Slime light paint masks

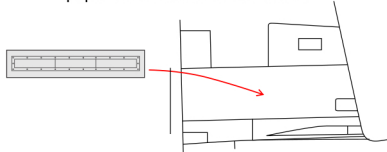
TISEO paint mask

Application procedure:

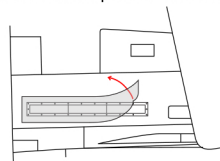
1) stick the transfer sheet over the slime light on the backing paper



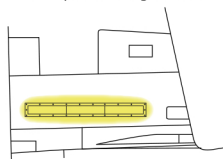
2) remove the whole set from the paper and transfer to the model



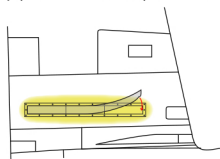
3) remove the transfer sheet after the slime light is in the correct position and burnish down



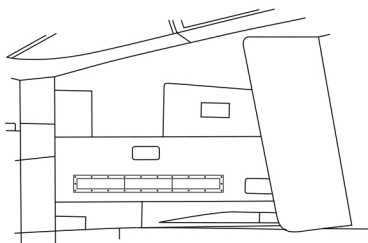
4) paint with yellow/beige colour



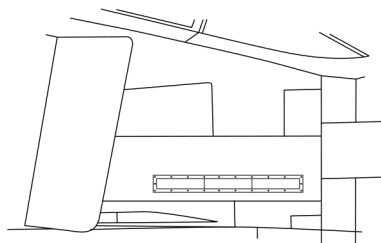
5) apply paint mask and paint the model



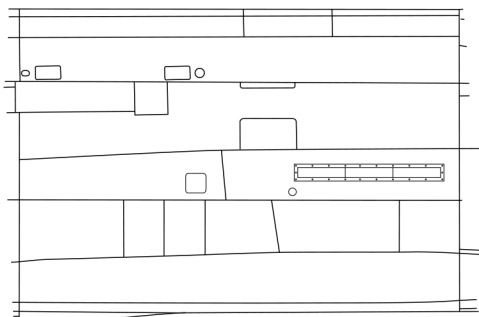
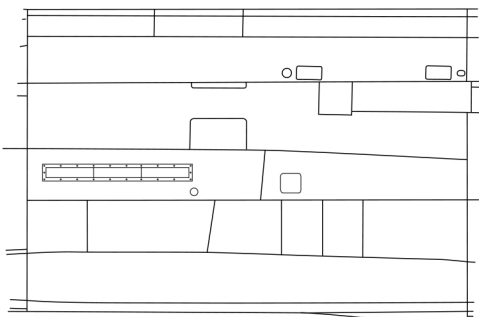
Placement (actual scale size):



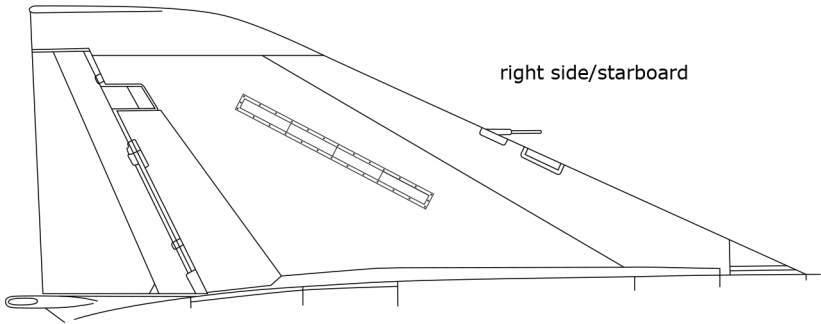
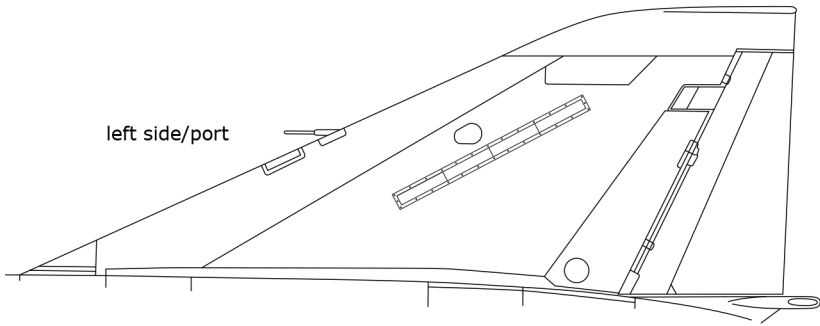
left side/port



right side/starboard

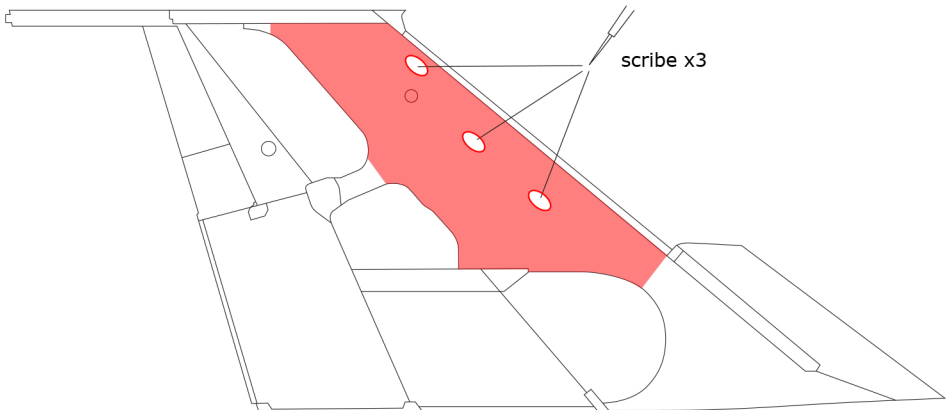


Placement (actual scale size):



11. Upper wing access panels.

Most (all?) Greek F-4E have three additional access panels on the wing tops near the leading edge. A scribing mask set is included to make this addition relativey easy. Apply the mask as shown below and scribe with a needle type scribing tool.



left wing shown, repeat for right wing