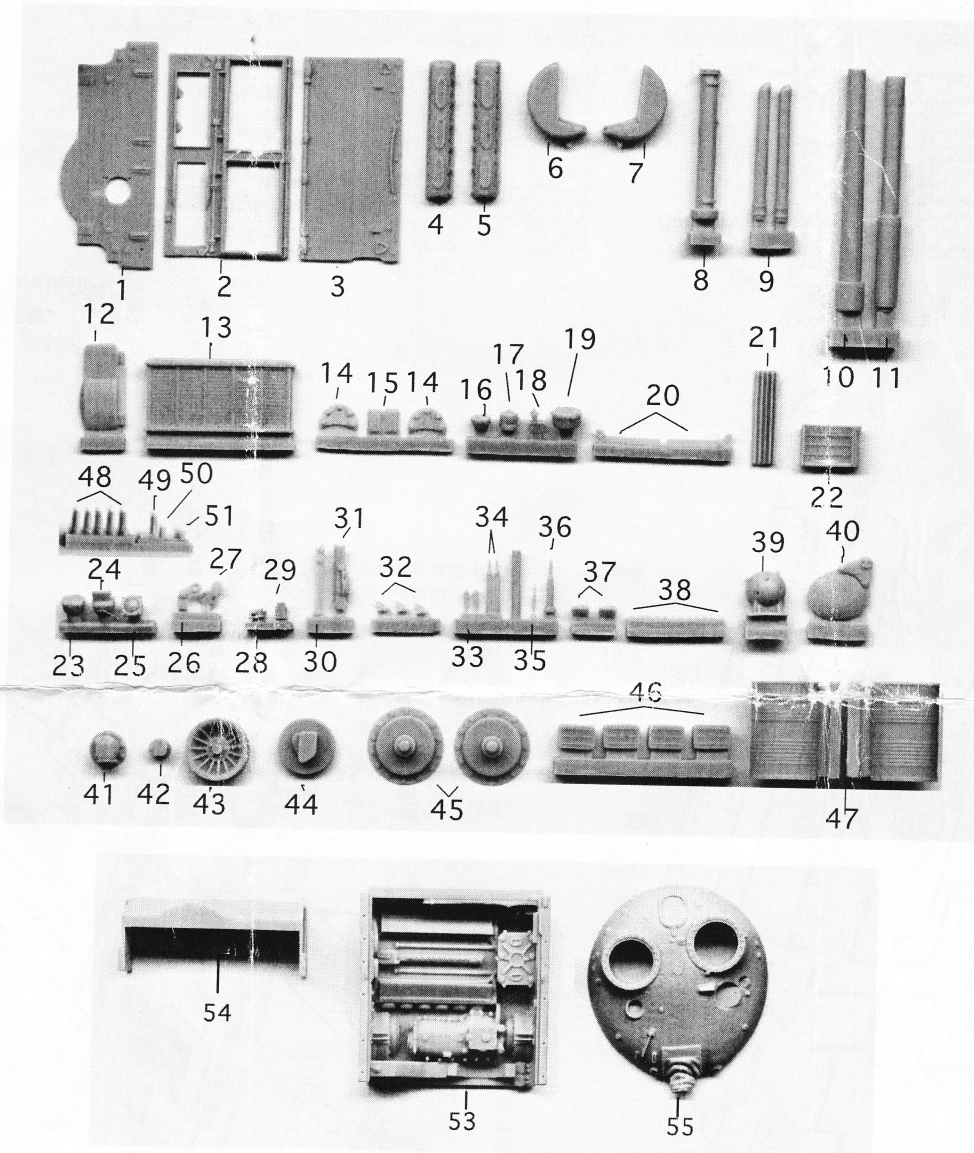




**No. 1627**  
**T-62 M Detail Set**  
**1:35 Scale (for Tamiya)**

© **VERLINDEN PRODUCTIONS, Inc.**  
 811 Lone Star Drive, O'Fallon MO 63366 USA



VP #1627 1:35 T-62M Detail Set was designed specifically to fit the Tamiya kit of the T-62A (#35108). In order to utilize the resin and photo etched detail parts in this detail set, cutting and modification of some of the plastic Tamiya kit parts will be necessary. Always test fit all parts before cementing them. Some resin and photo-etched parts may need to be modified in order to achieve an optimum fit. We strongly recommend that you read and understand these instructions fully before attempting to assemble this detail set. Discard the following Tamiya kit parts, which will be replaced by the resin and photo-etched detail parts contained in this detail set: A7, A8, A13, A14, B1, B7, B11, B18, B20 - B22, B24 - B30, B32, B33, C1 - C22, C26 - C30, C37, C41, C42, Turret Turret base, and wire mesh.

1. Begin by cutting the sponsons off of the upper hull piece (Fig.1), taking care not to damage the cast-on stowage bins, exhaust port, and rear fender segments. Cut the above mentioned items off of the sponsons and sand the boxes down on the bottoms before assembling them as per steps 6 & 7 in the Tamiya instructions. Save these items for re-installation later.

2. After removing the sponsons, cut the engine deck off of the upper hull, and cut the transmission compartment off of the lower hull (Fig.1). On the upper full, a fine raised line cuts across the engine deck where the cut is to be made. On the lower hull, scribe a straight line even with the back of the left rear bogey mounting plate and cut along the line.

Fig.1

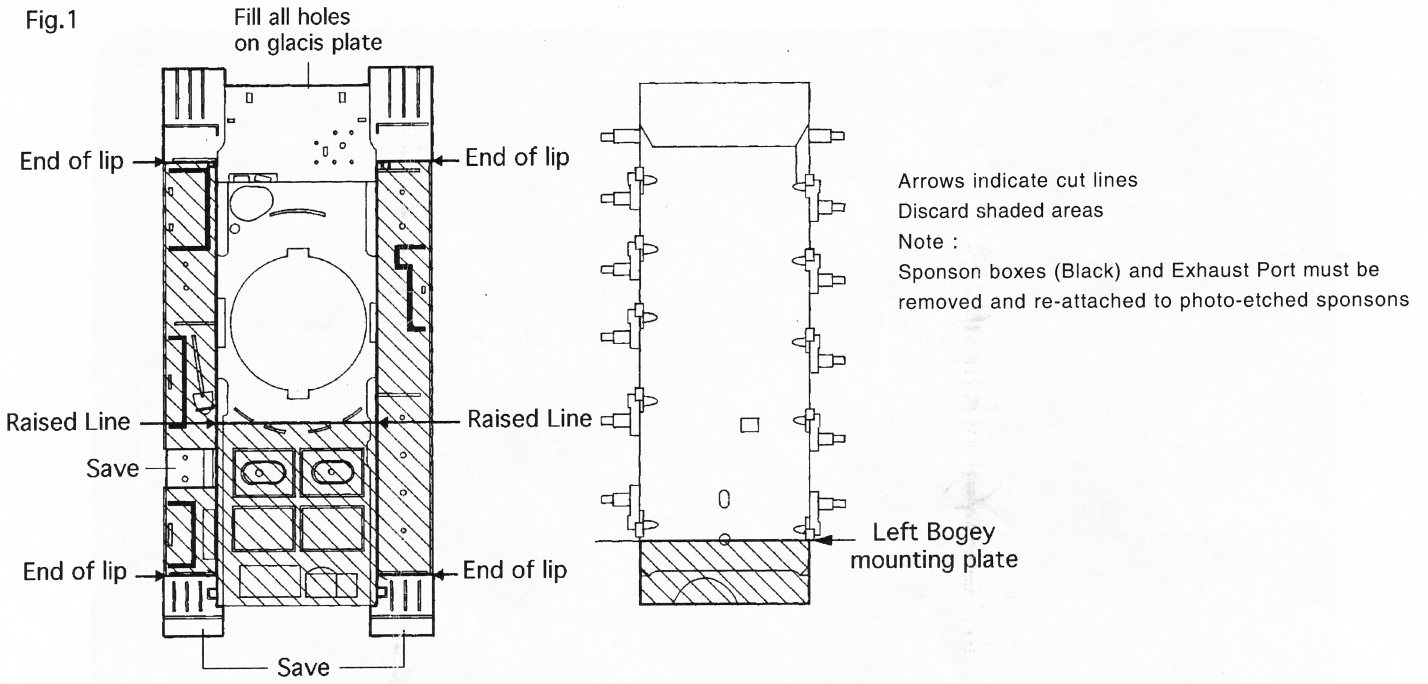


Fig.2

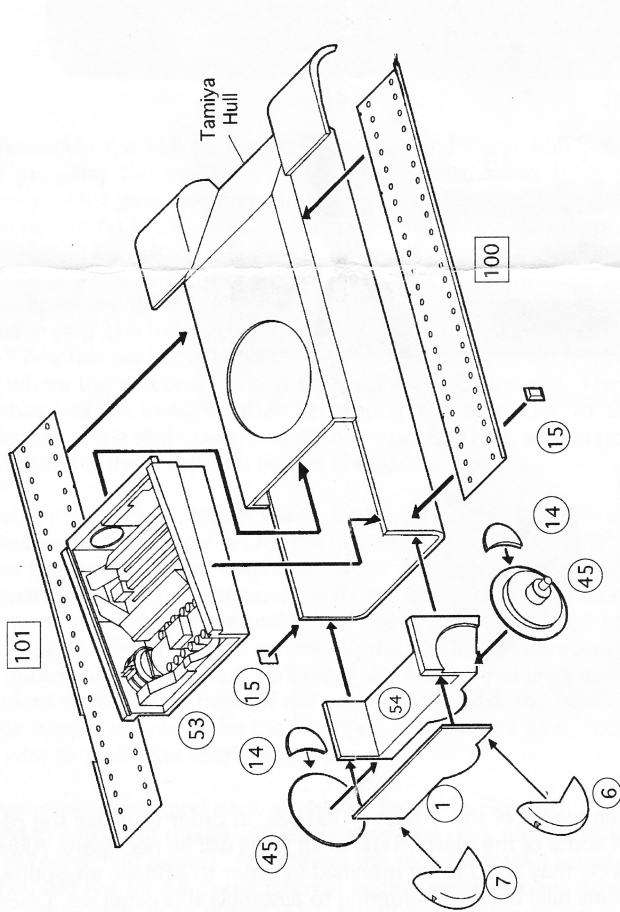


Fig.3

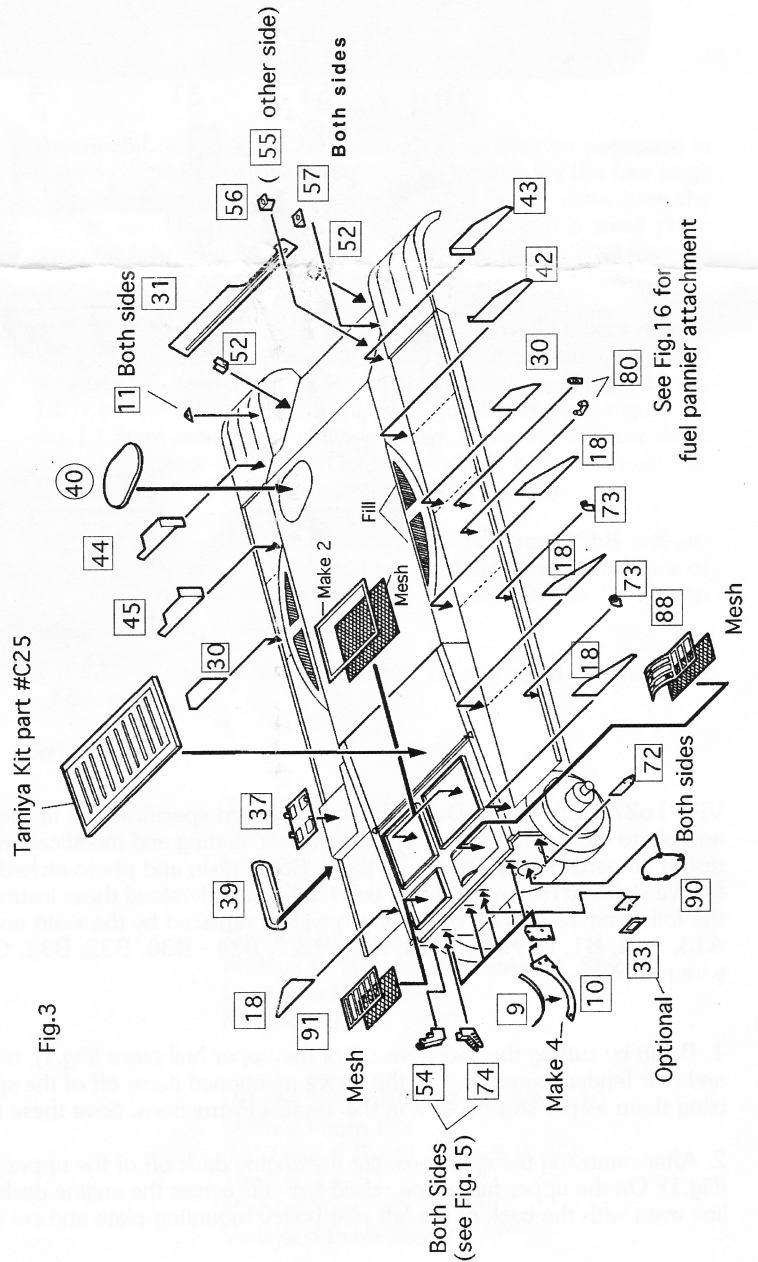




Fig.4

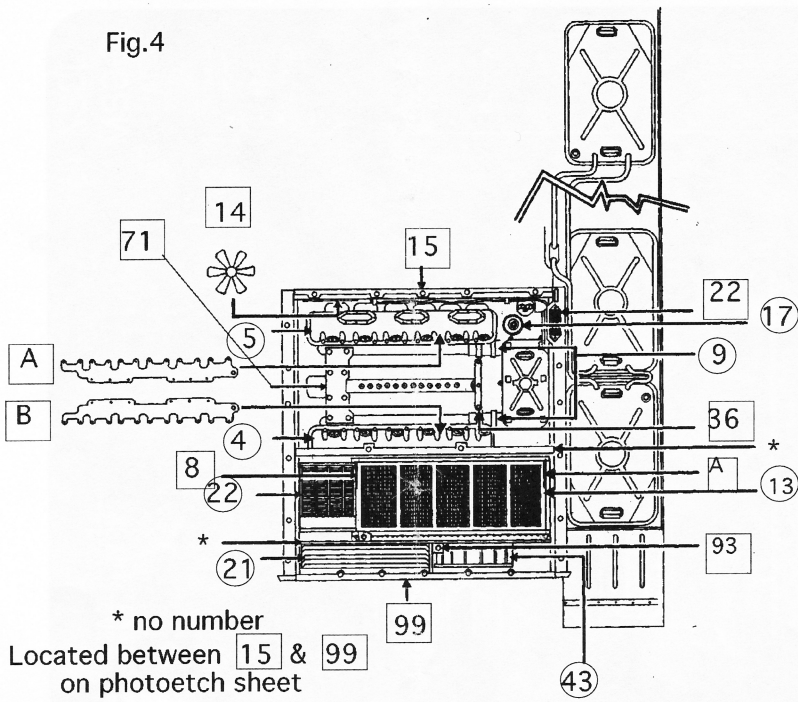


Fig.5

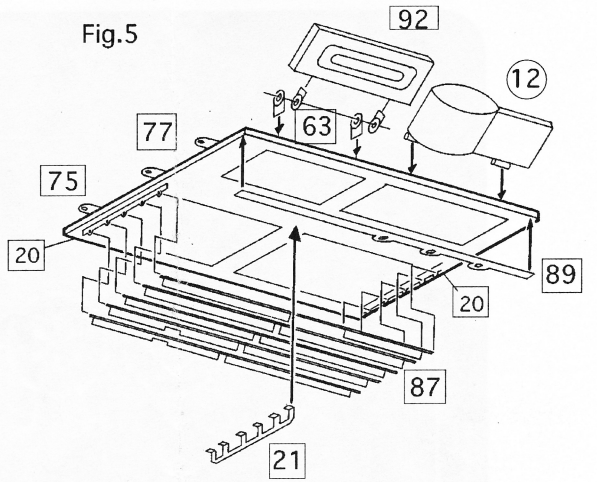


Fig.7

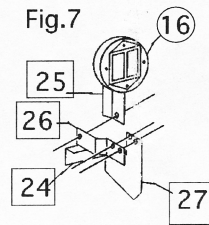


Fig.8

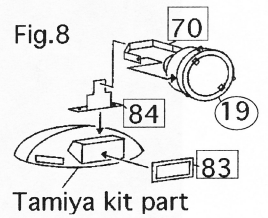


Fig.6

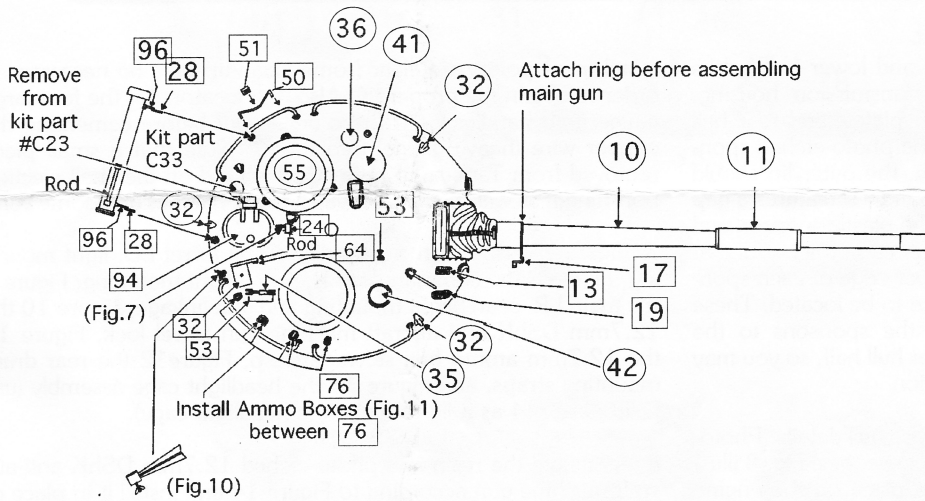


Fig.9

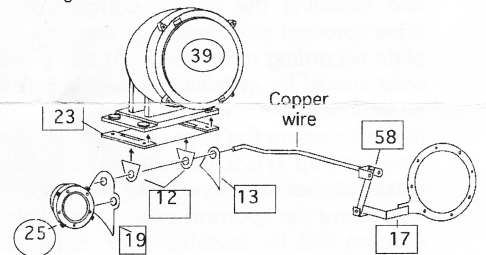


Fig.10

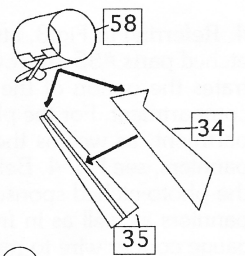


Fig.11

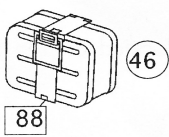


Fig.12

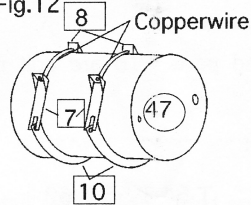


Fig.14

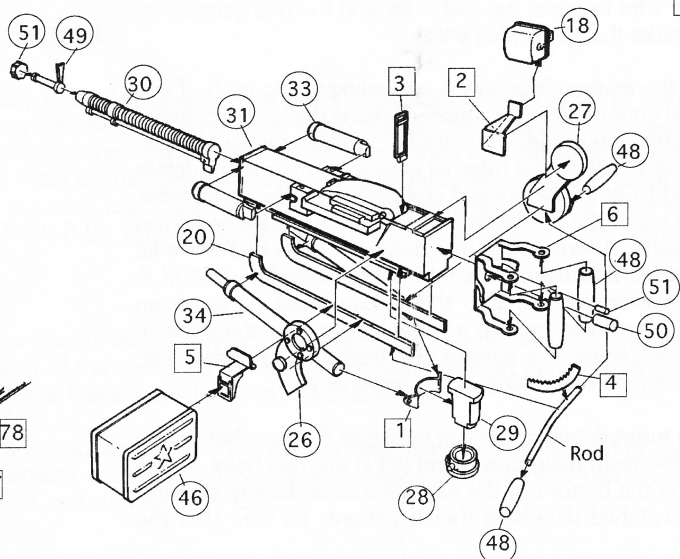


Fig.13

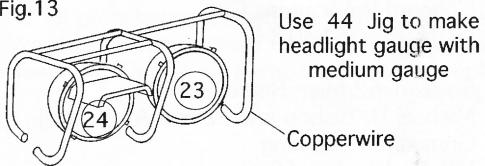


Fig.15

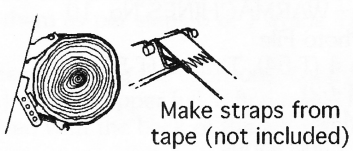
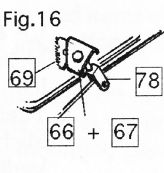
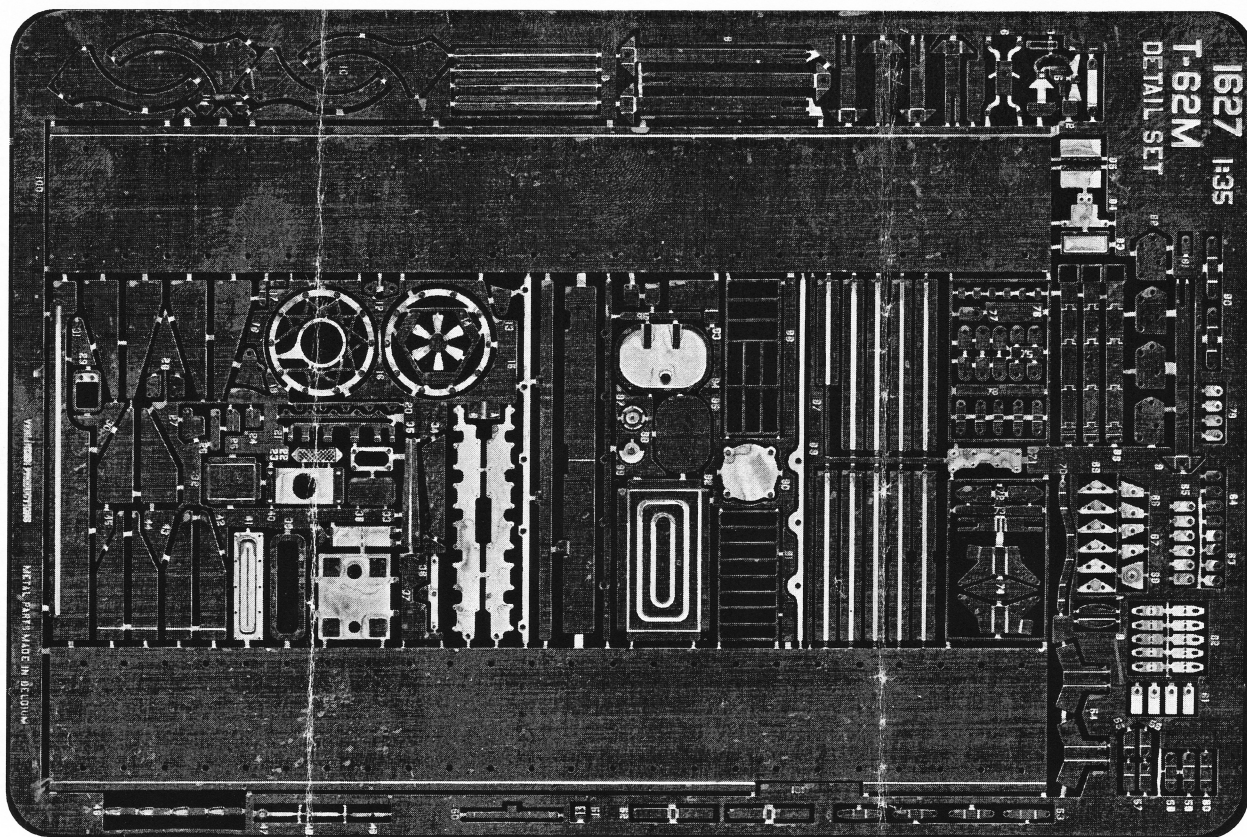


Fig.16





3. Assemble the hull by joining the upper and lower hull halves and installing the engine compartment, transmission housing, drive-sprocket gear housings and mounting plates, and rear hull plate according to Figure 2. At this point the photo-etched sponsons should be installed. Before installation, the outer lip should be bent upwards. Note that the left sponson (#101) features a gap in the lip where the exhaust port (cut from the plastic sponson and saved in step 1) is to be installed. Careful inspection will reveal that small notches are etched into the inside upper edge of each sponson where the sponson support brackets are to be located. These notches will be invisible after cementing the sponsons to the underside of the slight overhang of the upper hull half, so you may wish to mark them with ink before installation.

4. Referring to Fig. 3, attach the various upper hull details. Photo-etched parts #85 are covers for the drivers periscopes. Fig. 3 illustrates the option of the engine deck lids in place on the engine compartment, as well as the plumbing of the sponson mounted fuel panniers, see Fig. 4. Before cementing the plastic fuel panniers to the photo-etched sponsons, drill out holes for the fuel lines in the panniers as well as in front of the engine deck. Use the medium gauge copper wire to make the fuel lines, and the fine gauge copper wire to make the spark plug wires.

5. Assemble the engine deck covers according to Figure 5. If you intend to build your model with a closed engine deck, do not install the photo etched louvers (#87) under the radiator intake screens, as they will not fit. All of the internal engine compartment details were designed to fit in the opened compartment (the resin radiator will not fit under the closed deck cover unless it is sanded down from underneath). Alternatively, trim down the sides of Tamiya kit part #C22 and fit it instead. Note that photo-etched parts #92 & #31 have a pattern etched into them. Lay these parts on an opened telephone book and run a ballpoint pen into the pattern. This motion will press the pattern out from the opposite side, making a more realistic looking, 3-dimensional part.

6. Attach the turret details according to Figure 6. Note that on the front half of the resin main gun barrel (#11) are two bolts. These are situated on the bottom of the fume extractor. Before cementing the photo-etched details to their locations, be sure that the

attachment points are clear (some clean-up may be necessary in order to obtain the proper fit). Also, the locators for the four large gauge grab handles need to be drilled out before cementing the copper wire (heavy gauge) into them. Note that a small piece removed from Tamiya kit part #C23 is used on the shell ejection port hinge, as well as the Tamiya kit turret hatches and dome vent.

7. Figure 7 illustrates the assembly of the turret I.D. light mounting, Figure 8 the commanders I.R. searchlight mounting, Figure 9 the main I.R. searchlight mounting and gun linkage, Figure 10 the 12.7mm DShK anti aircraft machine gun travel lock, Figure 11 the 12.7mm ammo box stowage clasp, Figure 12 the rear drum mounting straps, and Figure 13 the headlight cage assembly (use resin part #44 as a jig to make the headlight cage).

8. Assemble the resin and photo-etched 12.7mm DShK anti-aircraft machine gun according to Figure 14 and install it in place of the plastic item as shown in step 10 of the Tamiya instruction sheet.

8. Photo-etched parts #16 are bolt rings located on the drive sprockets.

#### REFERENCES:

T-54 T-55 T-62  
Steven J. Zaloga  
Concord Publications Co.  
ISBN 962-361-913-8

Soviet T-62 Main Battle tank  
Michael D. Bishop and Patrick A. Stansell  
Grenadier Publishing  
MB Models, Inc. 1990

VP #669 WARMACHINES No. 10  
Military Photo File  
IDF Tiran 4 (T-54), Tiran 5 (T-55),  
Tiran 6 (T-62)  
Michael Mass  
Verlinden Publications