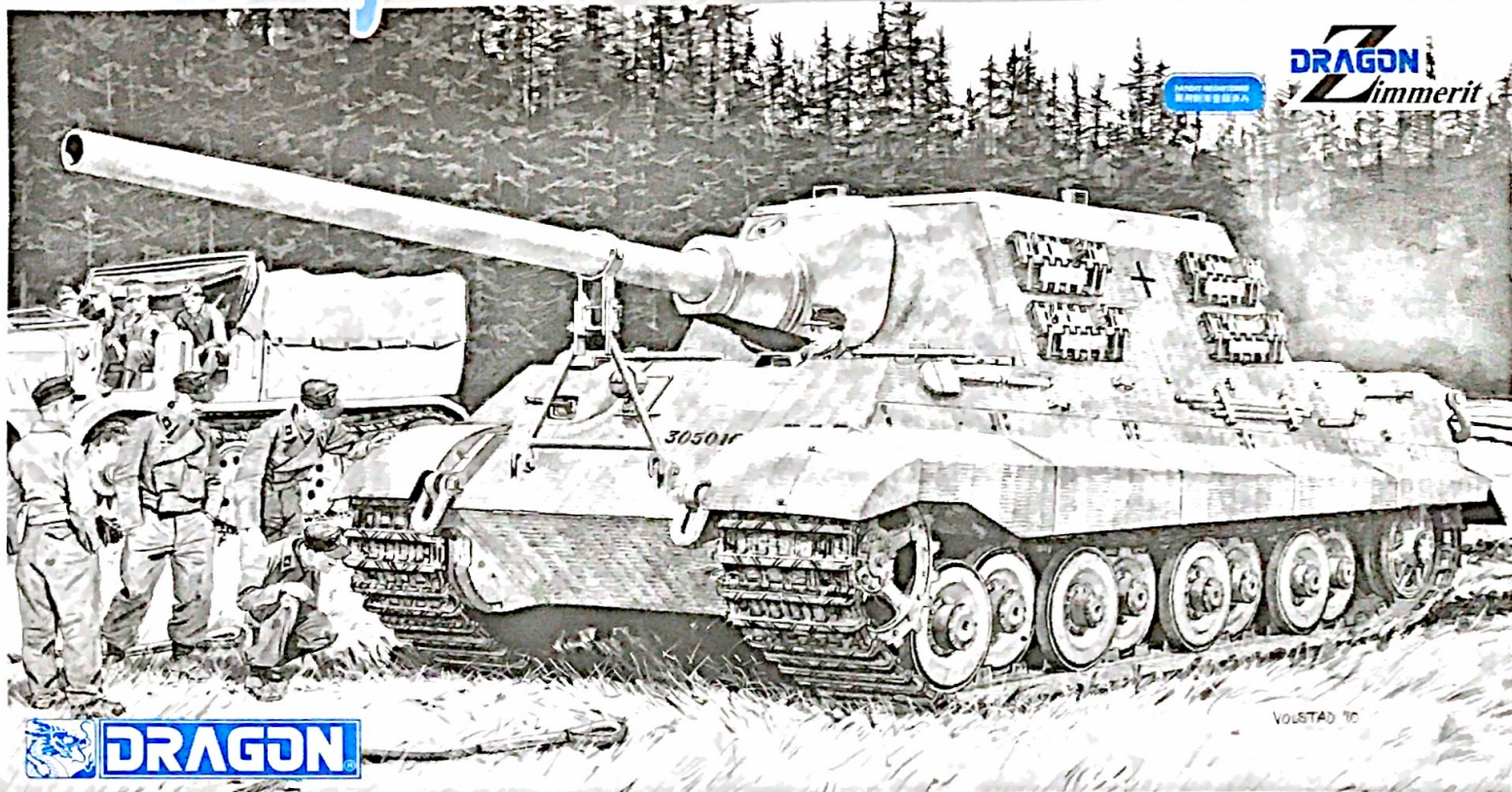


JAGDTIGER

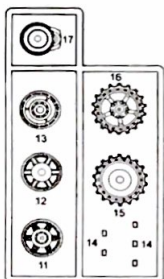
PORSCHE PRODUCTION TYPE w/Zimmerit



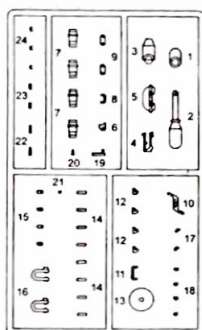
Project supervised by HIROHISA TAKADA.
 Technical drawings provided by MINORU IGARASHI and the DRAGON Engineering Team.
 Thanks to TOM COCKLE and GARY EDMUNDSON as technical consultants.

KIT NO. 6493

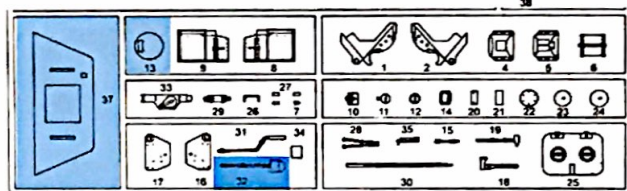
Ax2



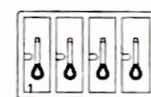
Bx2



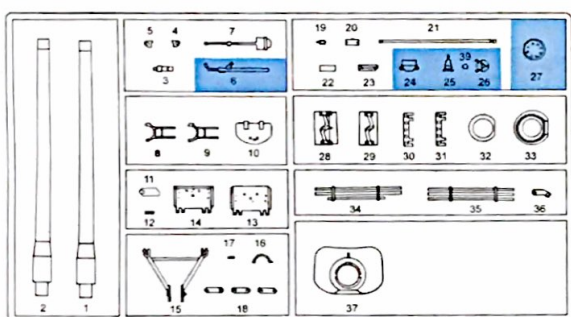
C



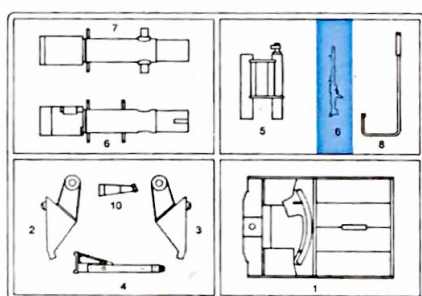
TC



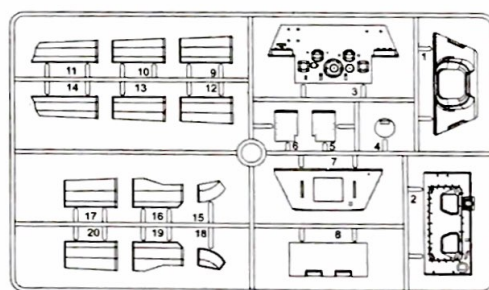
D



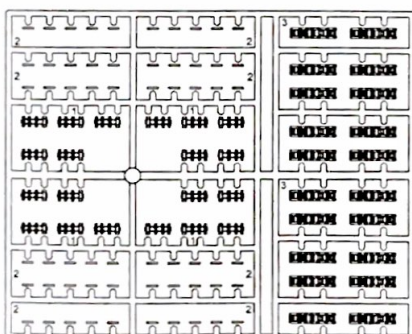
E



K



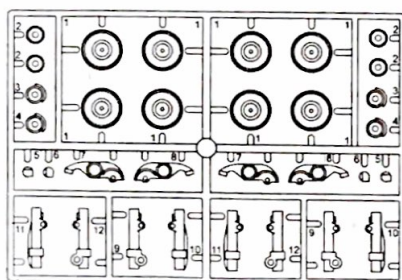
Fx6



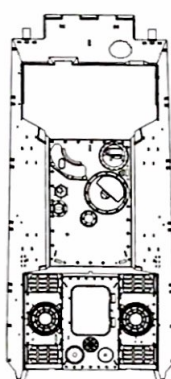
Wx2



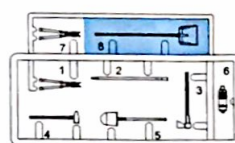
Hx2



Z

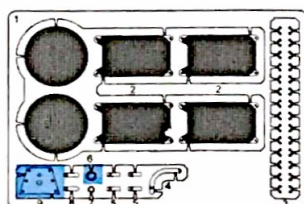


TA

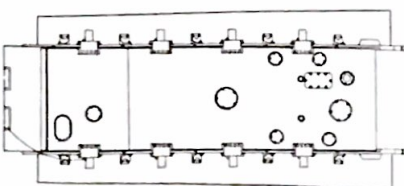


S (metallic cable wire)

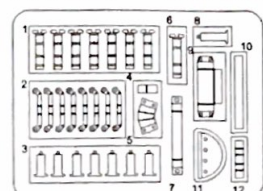
MA (PHOTO-ETCHED PARTS)



I

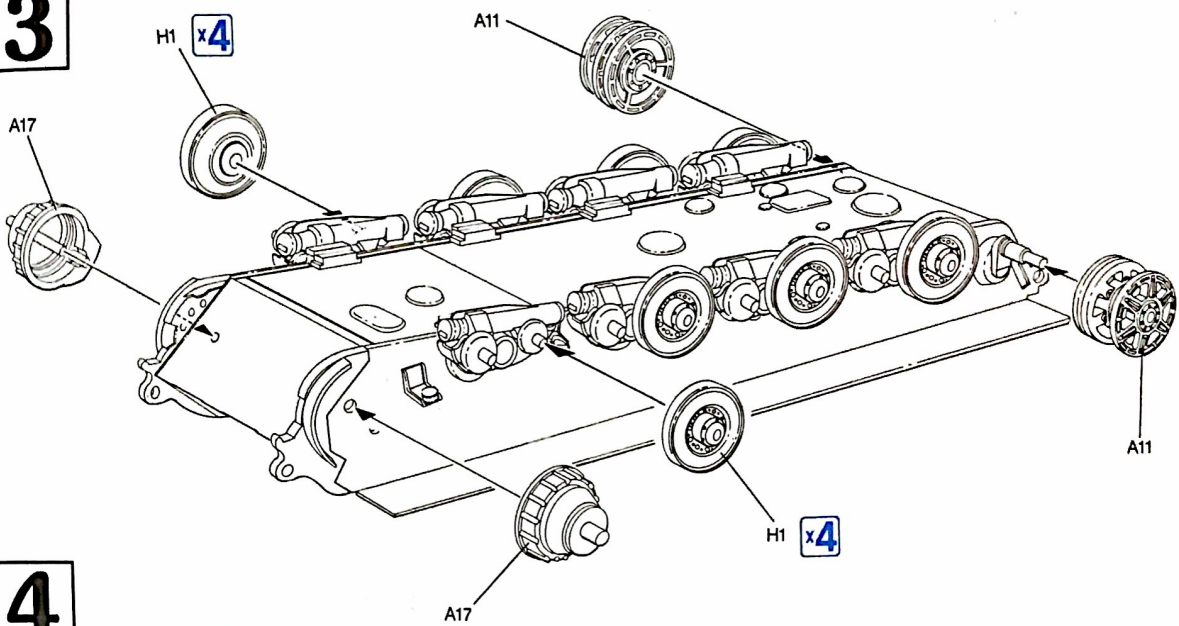


MC (PHOTO-ETCHED PARTS)

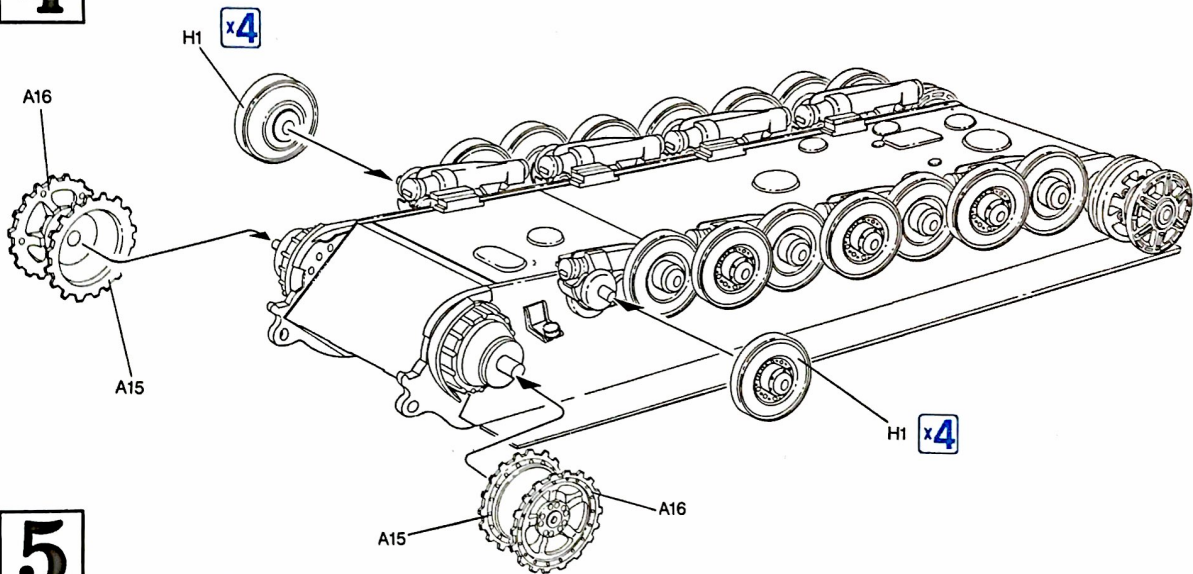


この部品は使用しません
 Parts not for use
 Teile werden nicht verwendet.
 Pièces a ne pas utiliser
 Parti nin utilizzati
 不掲載使用的的零件

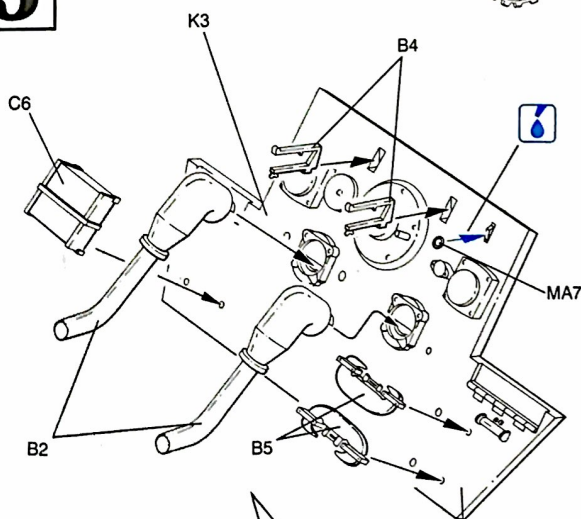
3



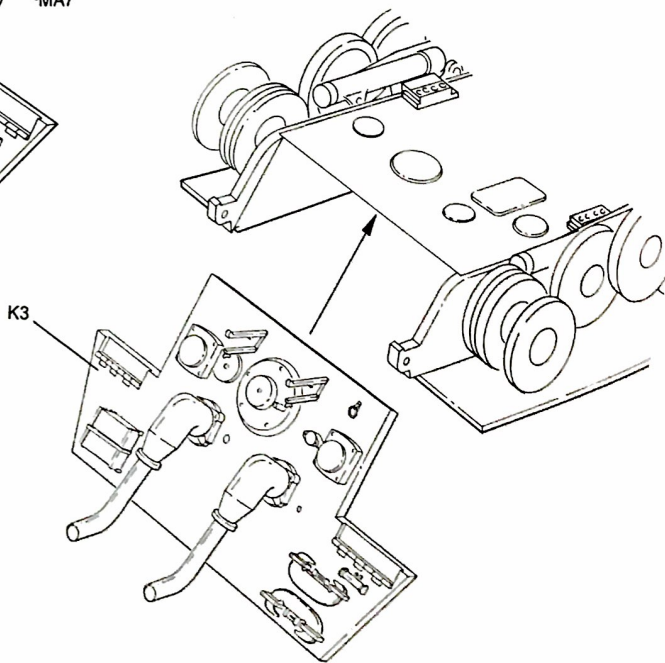
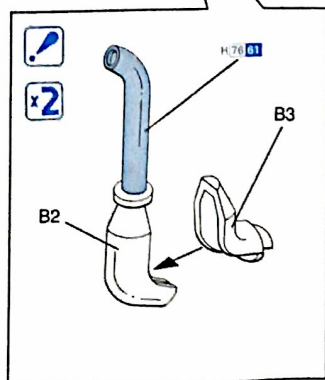
4



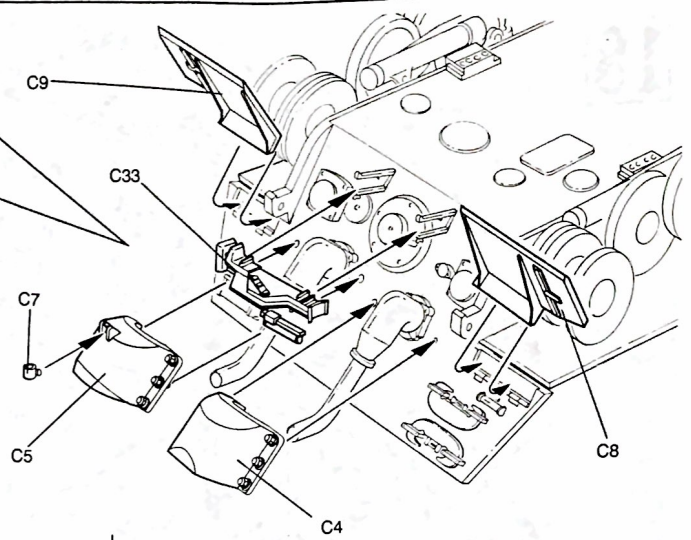
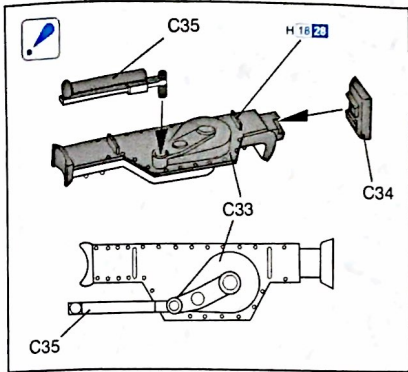
5



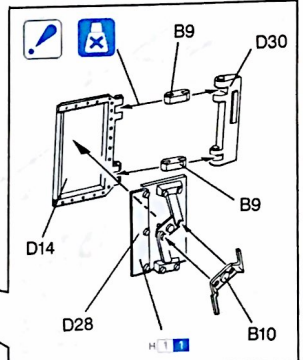
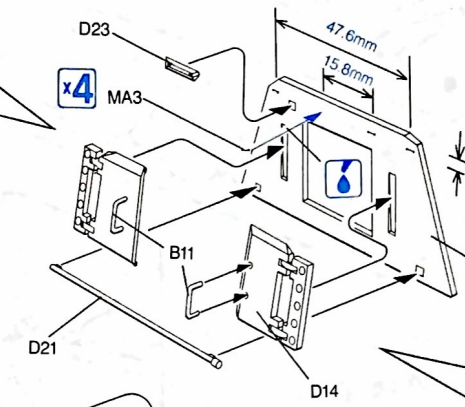
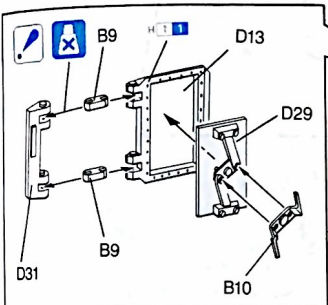
6



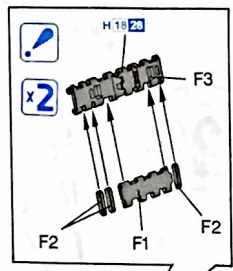
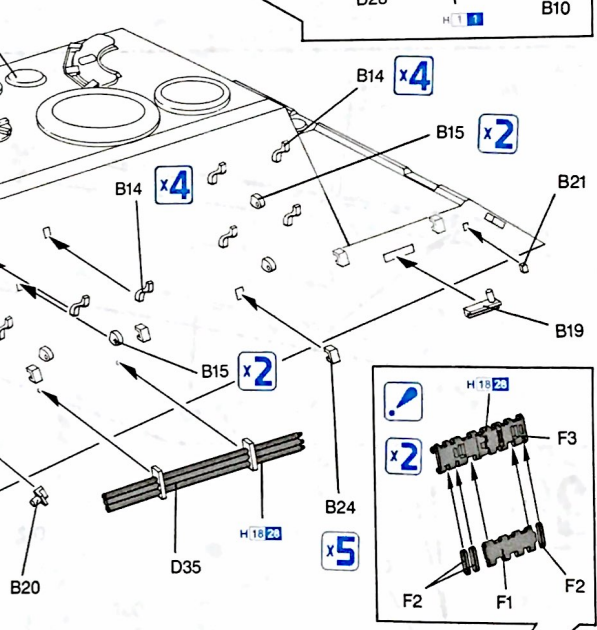
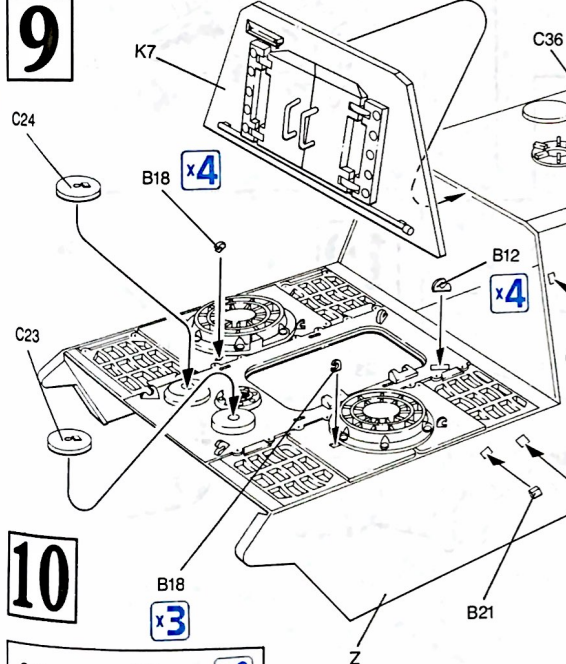
7



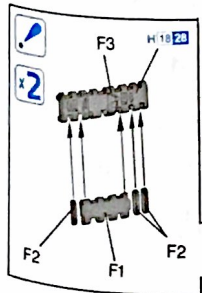
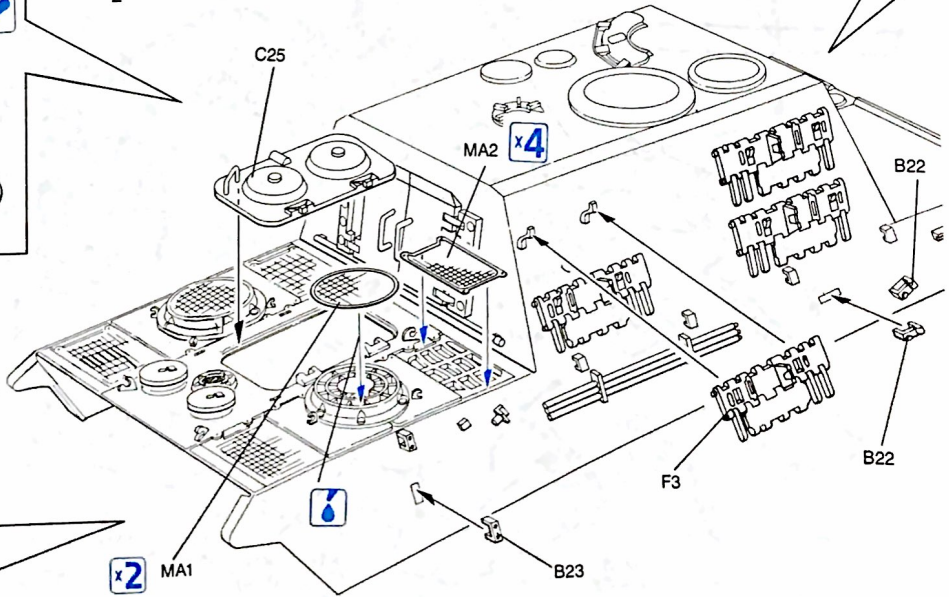
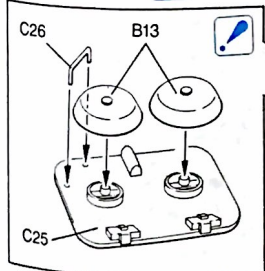
8



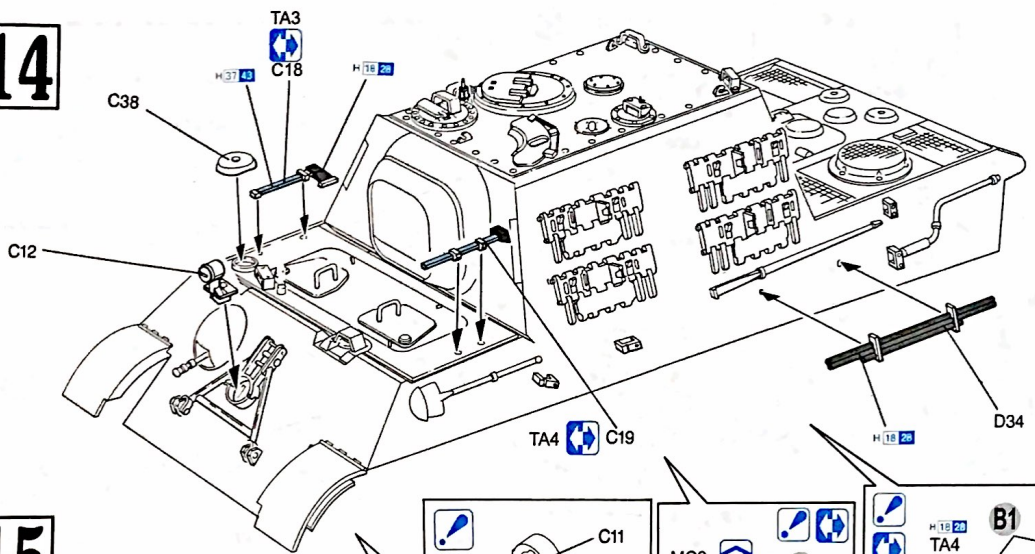
9



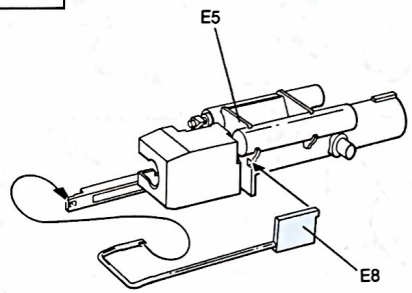
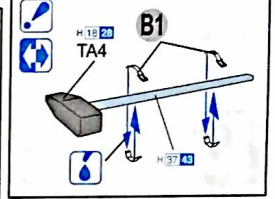
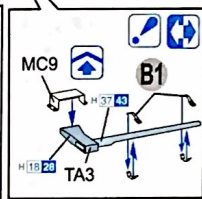
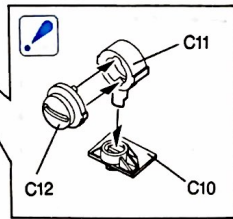
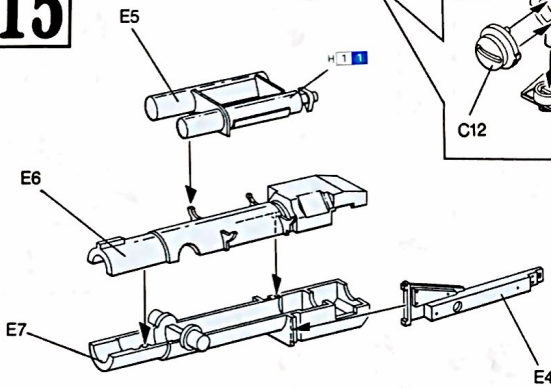
10



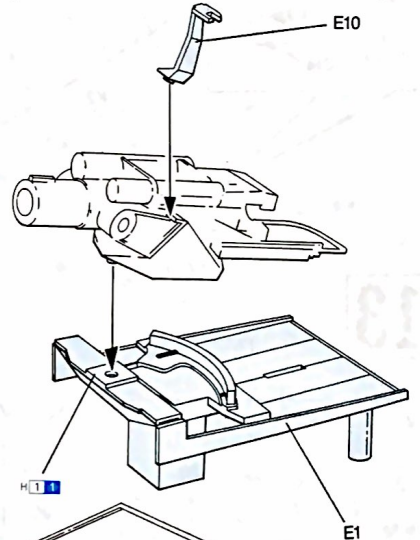
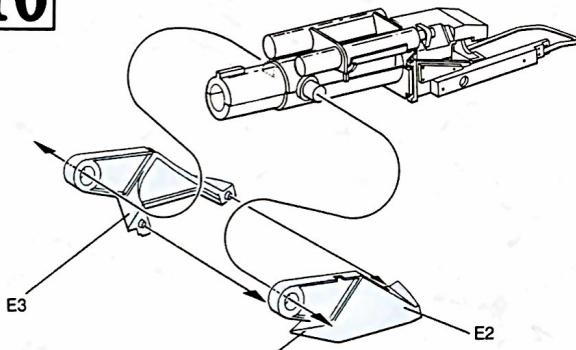
14



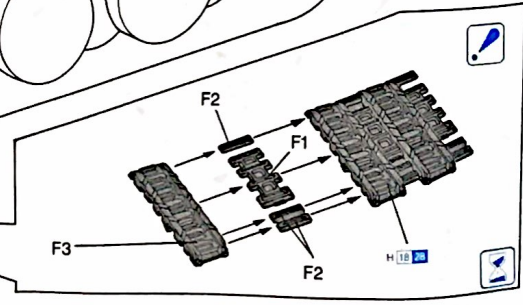
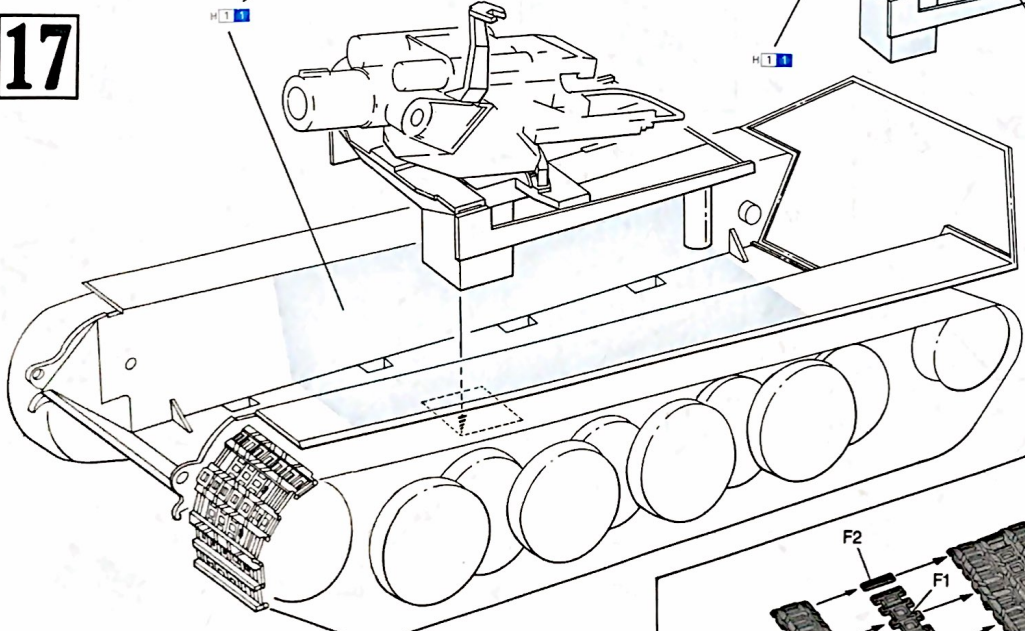
15



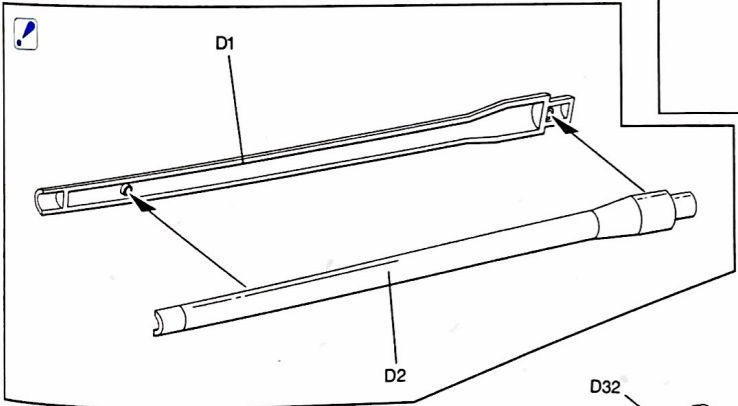
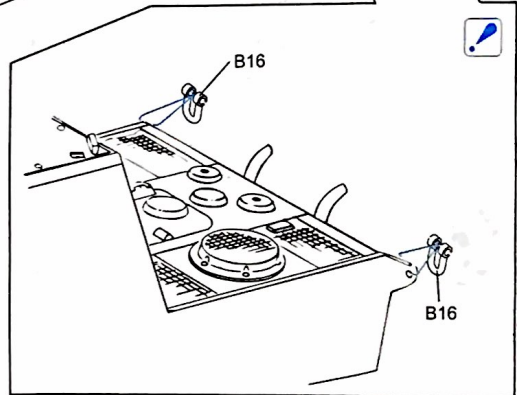
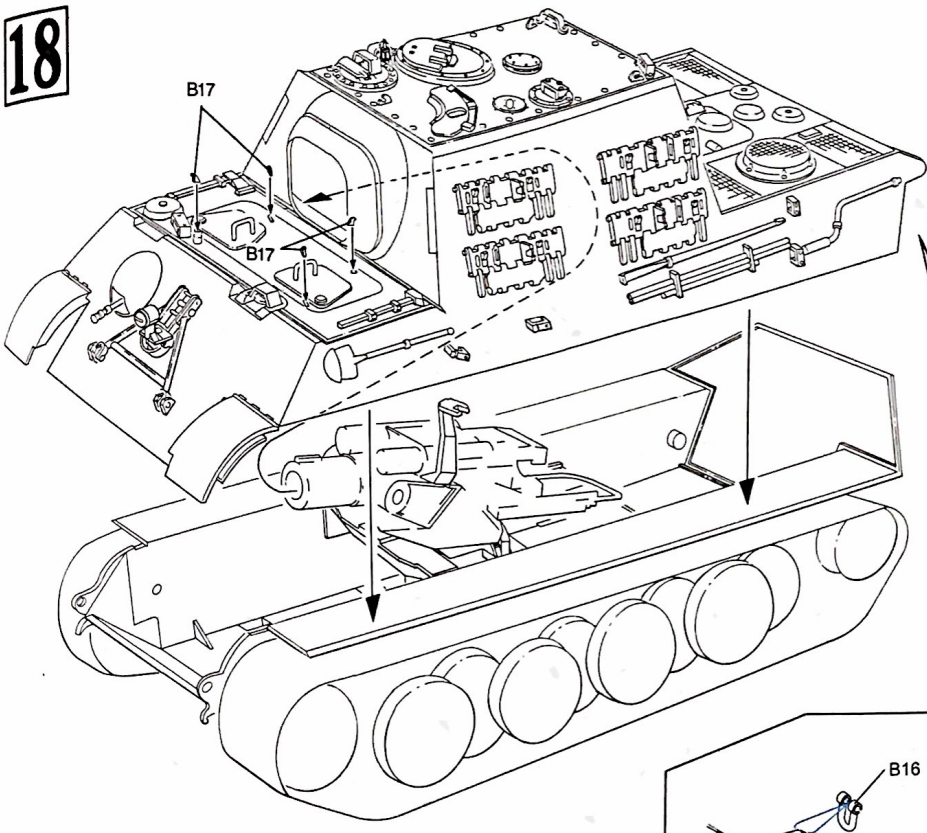
16



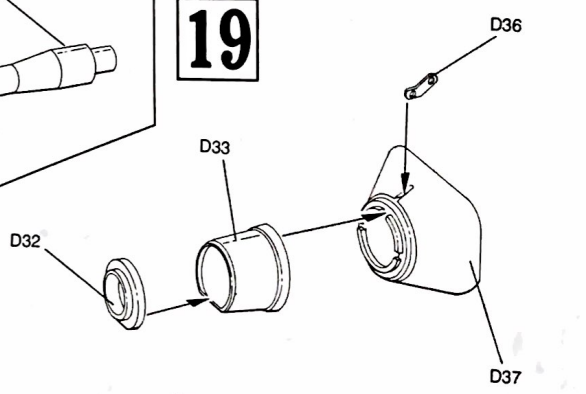
17



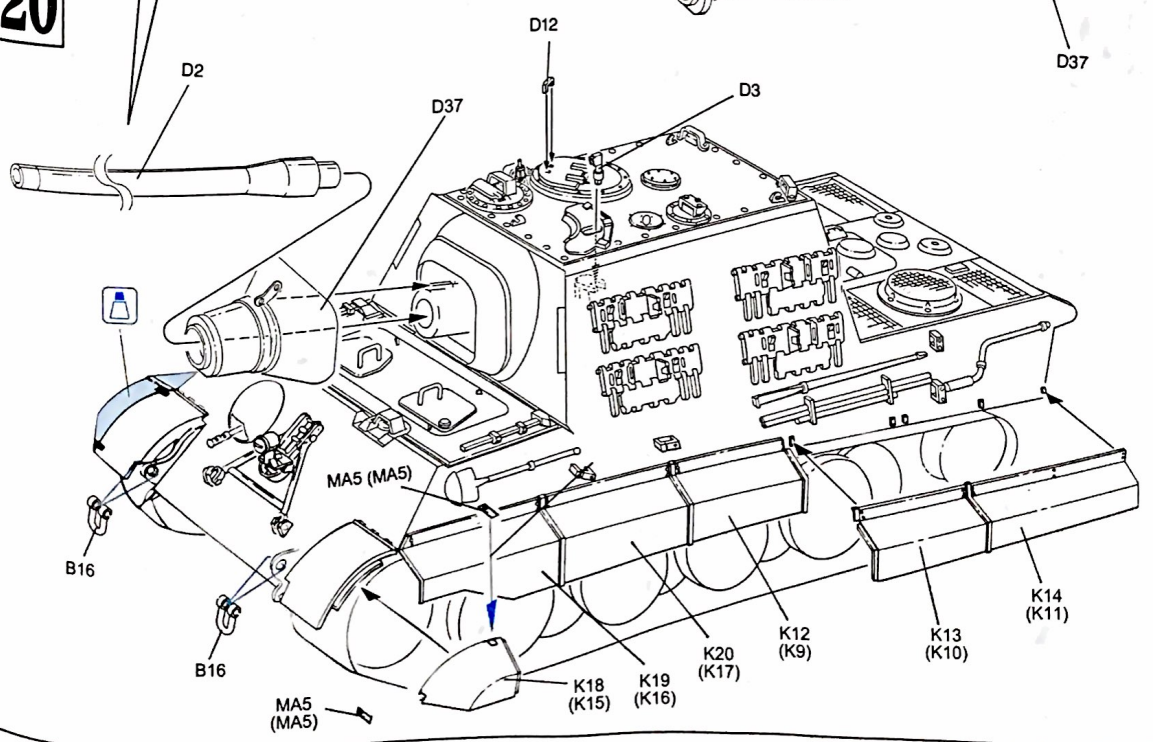
18



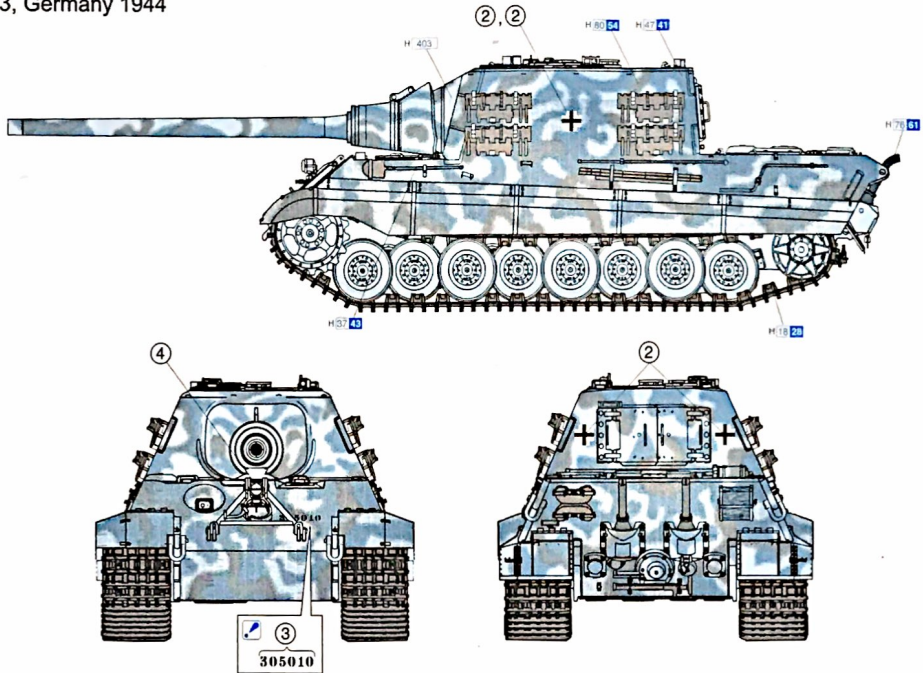
19



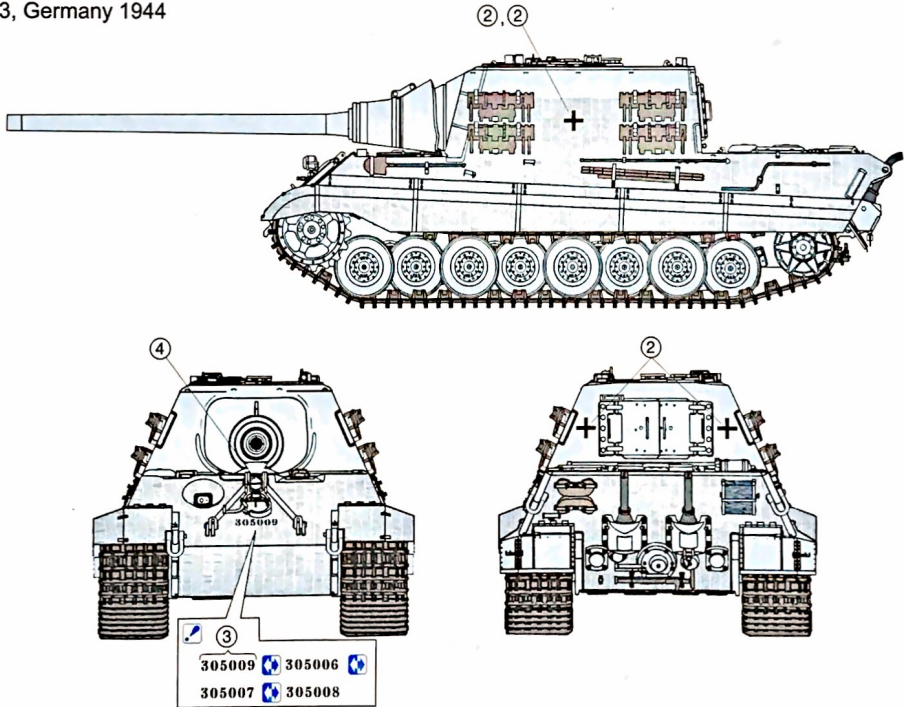
20



Pz.Jg.Abt.653, Germany 1944



Pz.Jg.Abt.653, Germany 1944



Dragon Europe: c/o Hobby Pro Marketing Ges. m.b.H.
Am Leonhardbach 7, A-8010 GRAZ, AUSTRIA

DRAGON Copyright © 2011
6493-01

■デカールの貼り方

- ① あらかじめデカールを貼る場所の汚れを拭き取ってください。
- ② 貼りたいデカールを切り取り、1枚ずつ水、またはぬるま湯に台紙を下に20秒ほど浸します。
- ③ 水から引き上げたらタオル等に乗せ、指先で動かかめます。その後、台紙をずらしながら所定の位置に貼ります。
- ④ 指先に少量の水をつけて微調整した後、柔らかな布等で内側の水分や気泡を押し出してください。
- ⑤ デカールが完全に乾いたら多少の水を含んだ布で、デカールまわりの粉を拭き取ってください。

■Modo esatto per applicare le decalcomanie

- ① Pulire la superficie del modello con un panno umido.
- ② Ritagliare ciascun disegno dal foglio decalcomanie e immergerli inacqua calda per 20 secondi.
- ③ Controllare col polpastrello se il disegno è allentato sulla base di carta. In questo caso, applicarlo nella esatta posizione sul modello facendolo scivolare dalla base di carta.
- ④ Spostare il disegno nella esatta posizione mediante il polpastrello umido, quindi togliere l'acqua in eccesso e le bolle d'aria sotto la decalcomania mediante un panno soffice di cotone.
- ⑤ Quando la decalcomanie sono asciutte, togliere con un panno umido l'eccesso di colla intorno alla decalcomania stessa.

■ Correct Method for Applying Decals

- ① Clean the model surface with a wet cloth.
- ② Cut out each decal design from the decal sheet, and dip it in warm water for 20 seconds.
- ③ Use a fingertip to check if the decal is loose from the backing paper. If so, place it in the proper position on the model, and slide it off the backing paper onto the model.
- ④ Move the design to the exact position with a wet fingertip, and squeeze out any excess water or air bubbles under the decal with a soft cotton cloth.
- ⑤ When the decals are dry, use a wet cloth to gently wipe away any residue left around them.

■Comment appliquer les décalcomanies correctement

- ① Nettoyer la surface du modèle avec un chiffon humide.
- ② Découper chaque décalcomanie de sa feuille de papier et la plonger dans l'eau tiède pendant vingt secondes.
- ③ Vérifier avec le bout du doigt si le dessin se détache de son papier-support. Si oui, le positionner à l'endroit choisi sur le modèle et retirer doucement le papier-support.
- ④ Positionner la décalcomanie correctement avec un doigt humide et éponger tout restant d'eau et toutes bulles d'air sous la décalcomanie avec un chiffon doux.
- ⑤ Quand les décalcomanies sont sèche, détacher le colle autour des décalcomanies avec un chiffon humide.

■Das Korrekte Aufbringen der Abziehbilder

- ① Oberfläche des Modells mit feuchtem Tuch reinigen.
- ② Jedes Motiv einzeln aus dem Bogen herausschneiden und 20 Sekunden in warmes Wasser tauchen.
- ③ Mit dem Finger prüfen, ob sich das Motiv vom Trägerpapier gelöst hat. Wenn ja, so schieben Sie es vom Papier weg und seine genau Position auf dem Modell.
- ④ Korrigieren Sie die exakte Lage mit nasser Fingerspitze und drücken Sie Wasserblasen unter dem Abziehbild mit einem weichen Baumwolltuch weg.
- ⑤ Entfernen Sie beim Antrocknen der Abziehbilder die Klebemittelränder mit einem feuchten Tuch.

■貼上水印標記の正確方法：

- ① 用濕布拭淨模型表面。
- ② 按照各標記的形狀從標記紙上切出，浸到溫水之中約20秒。
- ③ 用指尖試行觸摸以確定標記是否已脫離底紙，如果確實，則把標記挪到底紙到模型表面的適當位置上，小心地將底紙移去，把標記留在模型表面。
- ④ 以濕水的指尖把標記移到正確的位置上，再用柔軟的棉質布料把標記輕壓，以擠出標記底下的氣泡和水分。
- ⑤ 標記乾燥後，用濕布輕拭標記及其附近的模型表面，以洗去可能殘留在標記附近的多餘膠水，確保效果完美。