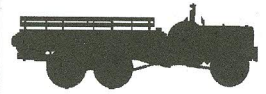


**AFV  
CLUB****SCALE 1/35 AF 35S18****U.S. ARMY  
1-1/2 TON 6X6  
PERSONNEL CARRIER****WC63**

When the U S Army increased the size of their rifle squads from 8 to 12 troops, they ordered a correspondingly larger personnel carrier. Dodges plant in Fargo responded by introducing the biggest brother in their famous WC series of light trucks, the WC62/63. The extra four feet of body space in this 1-1/2 ton six wheeler was big enough for 12 fully equipped G. I.s together with extra equipment, but it was more usually used for general transport. Most of the components used in this 1-1/2 ton six wheeler are shared with it's 4 wheeled brothers. However to increase traction a new two speed transfer case was specified. After WW2, this component was fitted throughout the range, which by then had evolved to become the M37 series. Sometimes known as the "FARGO", its popular name was coined when the launch publicity declared that "Every mother's son loves the "BIG SHOT". 55 thousand WC62/63 SNL G-507 were produced between 1943 and 1944.

第二次大戦中、米軍は歩兵小隊の編成を8名から12名に増員したことを機に、従来のGMCよりも車高が低く、乗降が容易な大型の兵員輸送車の必要に迫られました。ダッジの系列会社のファーゴ社はこの要求に応え、WC系の軽トラックと共通パーツを用いた、WC62(ウインチなし)/WC63(ウインチつき)を開発します。荷台を4フィート延長し後輪を2軸とした車体は、完全装備の兵士12名とさらに余分に装備品を積載するのに充分なものでした。また、3/4トン・ウェポンズキャリアには無かった、高低2速のトランスファーを新たに装備したことにより駆動力が大幅に向上し、通常の貨物輸送にも広く使われたのです。このトランスファーは非常に有効で、それ以降のファーゴ社製四輪駆動車の標準装備となり、後のM37Iに引き継がれています。WC62/63は、大きな兄弟という意味で、「ビッグ・ショット」のニックネームがつけられ、1943年から44年の2年間で、総計55000輛が生産され、全世界の戦場に送られて活躍したのです。

在戰爭時期，美軍的陸軍步兵小隊由原先八名增編為十二名，為此，車身比GMC更低，搭乘容易的大型人員運輸車為當時所需要的。

因此，當時工場位於加拿大的FARGO公司，擔任起負責設計生產的工作，在該公司所設計的道奇系列當中，重新設計了傳動系統以及加強了後輪的載重裝置，它幾乎延用了有名的道奇3/4T的共通物件。並將乘載台延長4英尺成為WC62C無絞盤裝置，/WC63C有絞盤裝置，如此設計完美的車款，即使搭載十二名全副武裝配備的士兵，也充分有餘。

另外，它也重新裝備了新的傳統系統，該系統擁有高，低兩速，大大強化了，驅動力，這也是3/4T所沒有的。由於它擁有非常強大的驅動力，因此也普遍使用於貨物的運輸方面。

從此之後，這組傳動系統，也成為FARGO 4×4的一般基本配備，而且也繼續使用在M37的車款上。

最後，從1943-44共兩年時間，總共生產了55,000輛，活躍於世界各地的戰場，因此WC62/WC63擁有“彪悍兄弟”的美譽。



穴をあけてください。  
OPEN HOLE  
ÖFFNEN  
FAIRE UN TROU  
FORO APERTO  
HACER AGUJERO  
鑽孔



切り取ってください。  
REMOVE  
ENTFERNEN  
RETIRER  
SEPARARE  
CORTAR  
切除



2組つくってください。  
2 SETS NEEDED  
WIRD DÖPPELT BENÖTIGT  
DEUX SETS NÉCESSAIRES  
NECESSAIRE 2 SERIE  
SE NECESITAN DOS PIEZAS  
同様の製作二組



折曲げてください。  
BEND  
BITTE BIEGEN  
PUER SIL VOUS PLAIT  
PIEGARE  
PEGAR  
曲折



どちらかを選んでください。  
OPTIONAL  
NACT BELIEBEN  
FACULTAIF  
FACOLTATIVO  
OPCIONAL  
可以選擇採用



デカールをはってください。  
APPLY DECAL  
HIEAR ABZIEHBILD  
APPLIQUER DECALCOMAMIE  
APPLICARE DECALCOMANE  
PONER CALCOMANIA  
貼上水貼紙



瞬間接着剤 金属用。  
INSTANT GLUE FOR METAL  
METALLKLEBER  
COLLE A METAL INSTANTANEE  
COLLA Istantanea PER METALLI  
UTILIZAR PEGAMENTO INSTANTANEO  
瞬間接着剤、金属用



穴をうめてください。  
FILL HOLE  
SCHLIESSEN  
BOUCHER LE TROU  
FORO PIENO  
EMPUJE EL AGUJERO  
把孔填平



接着しないでください。  
DO NOT CEMENT  
NICHT KLEBEN  
NE PAS COLLER  
NON INCOLLARE  
NO PEGAR  
不用粘台

### Color list: 塗料表

Color	Brand	GSI Creos (Gunze Sangyo)			Humbrol	Revell	Life Color
		Hobby Color	Mr.Color	Mr.Color Spray			
Olive drab(2) 橄欖綠		H-78	C-38	J-38	66	46	UA106
Olive drab(1) 橄欖綠		H-52	C-12		155		UA003
Gold 金		H-9	C-9	J-9	16		LC75
Steel 黑鐵		H-18	C-28	J-28	53	91	LC76
Wood brown 木棕		H-37	C-43	J-43	10	81	UA085
Silver 銀		H-8	C-8	J-8	11	90	LC74
Khaki green 卡其綠		H-80	C-54				
Red 紅		H-3	C-3	J-3	19	31	LC56
Burnt iron 燒鐵		H-76	C-61		53		UA061
Flat black 消光黑		H-12	C-33	J-33	33	8	LC02
Semi gloss black 半光黑			C-92	J-92	85	9	

### Method For Applying Decals:

1. Clean Model Surface With Wet Cloth.
2. Cut Out Of Decal Sheet And Dip Them In Water For 3 Seconds.
3. Place it on proper position on model.
4. Slide off base paper leaving decals On Model With Wet Finger Tip.
5. Move Decals To Exact Position, Push Out Excess Water Under Decal With Soft Cotton Cloth.
6. When Decals Get Dry Then Complete.

### 水貼紙使用說明:

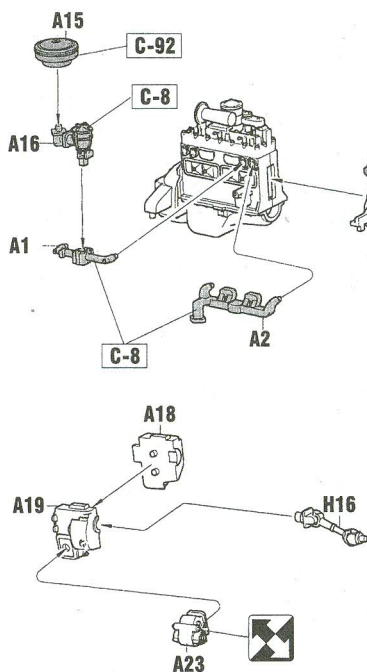
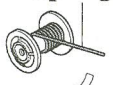
1. 將模型表面擦乾淨
2. 將貼紙剪下泡入清水中約 3 秒
3. 將泡濕之貼紙取出置於欲貼處旁
4. 用指尖輕推貼紙表面使其滑出底紙
5. 將貼紙調整至適當位置並輕擦拭水份
6. 待其自然乾燥後即完成

1

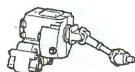
WC63  
WC63 MG



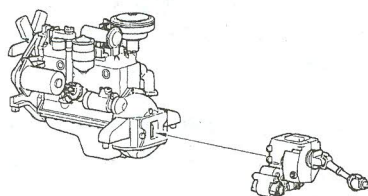
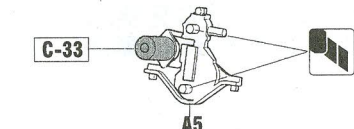
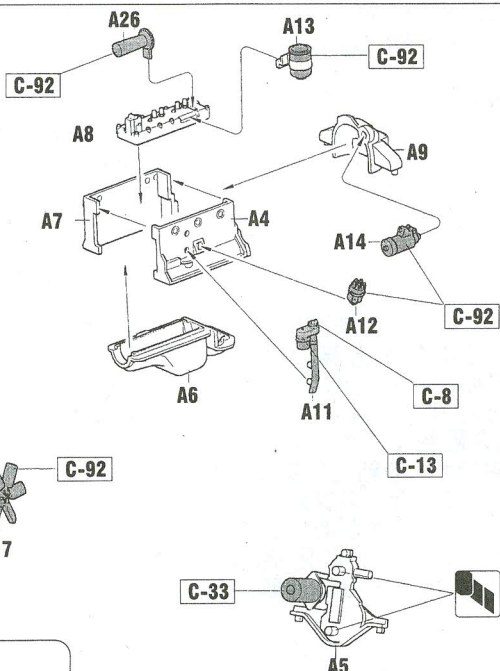
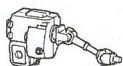
C-28  
Spring



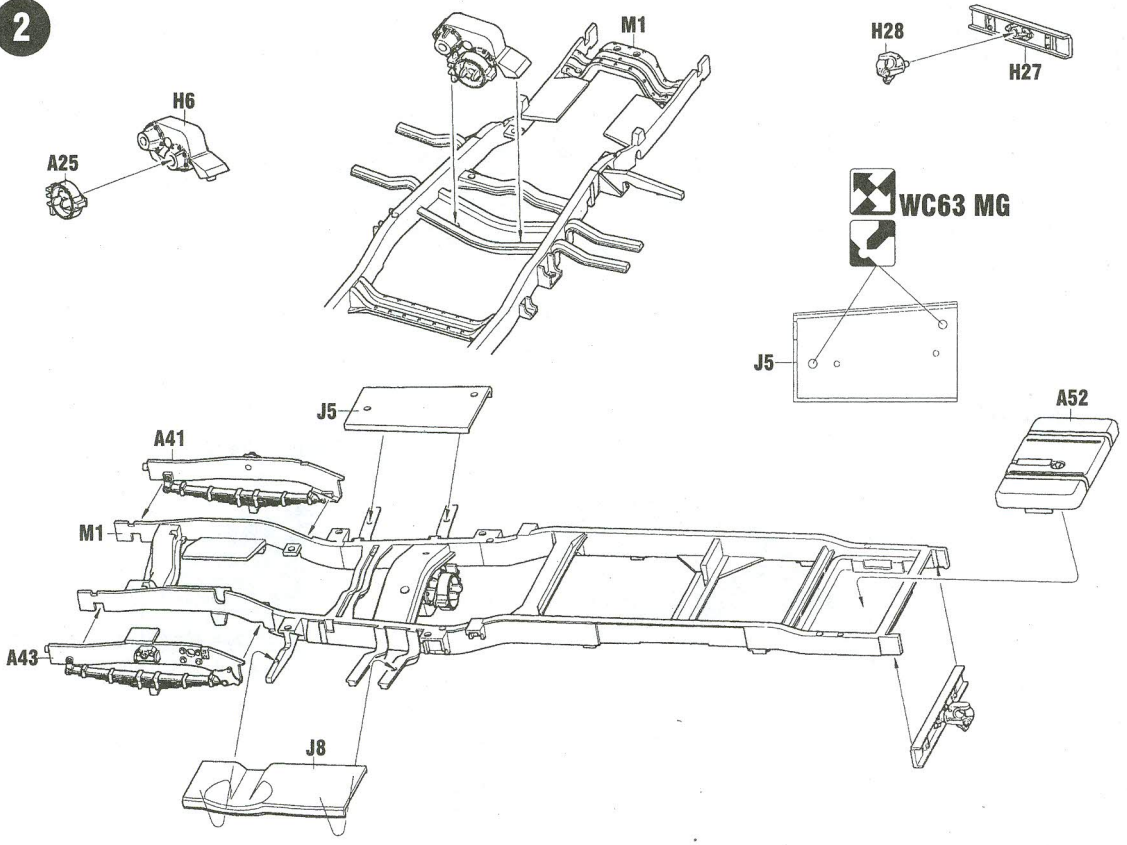
WC63  
WC63 MG



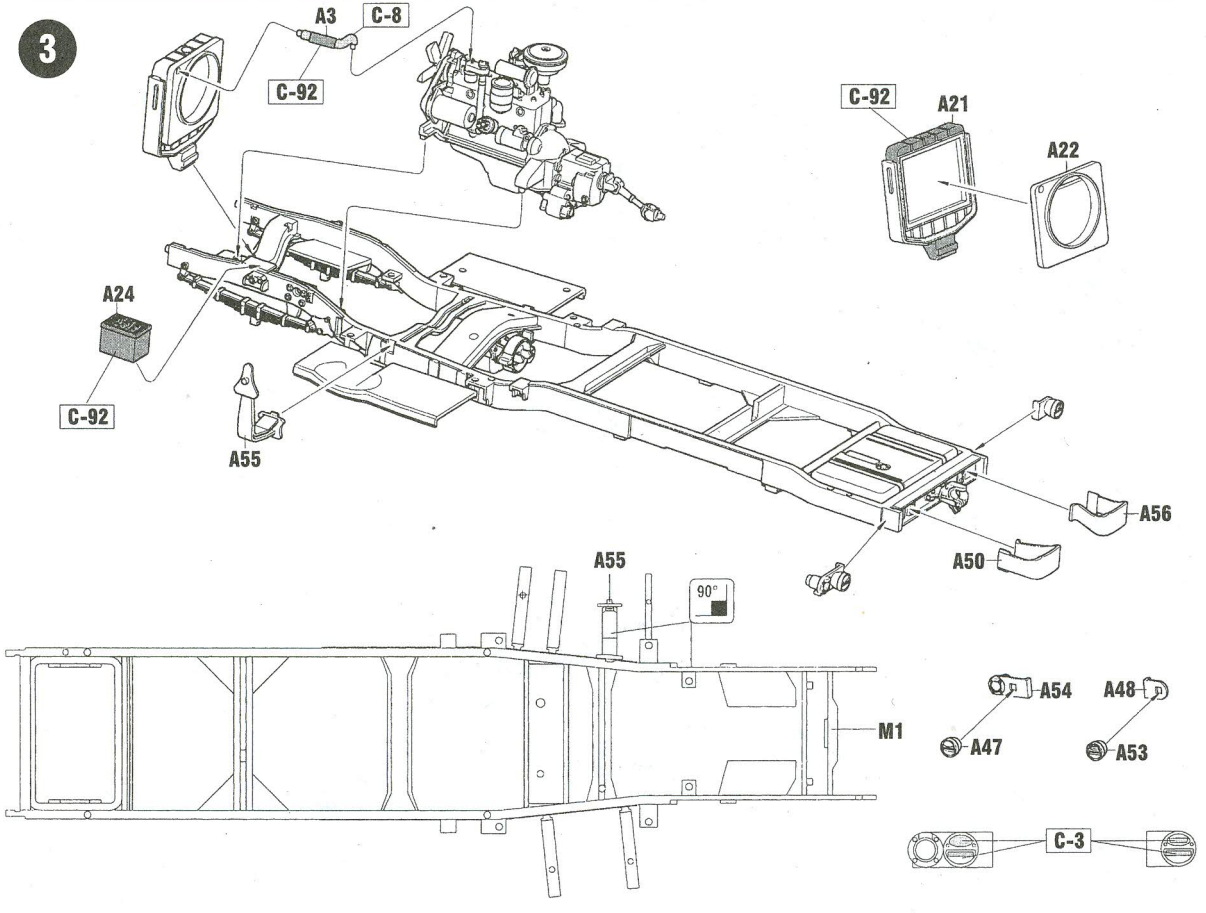
WC62



2



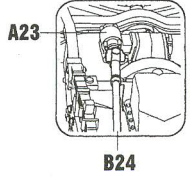
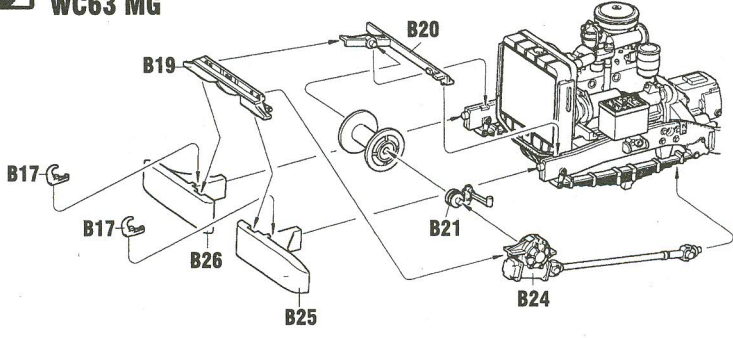
3



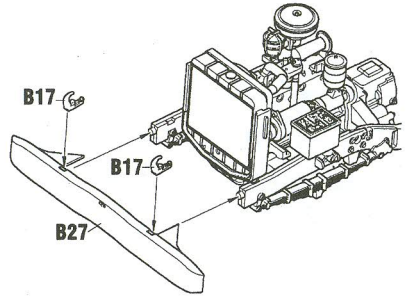
4



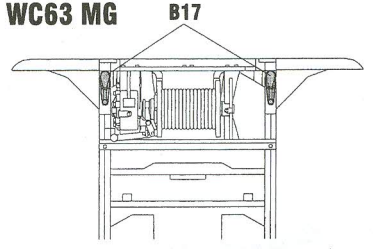
WC63  
WC63 MG



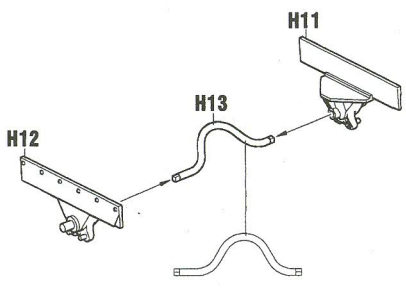
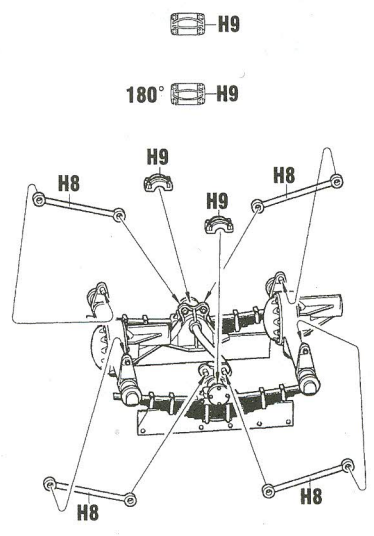
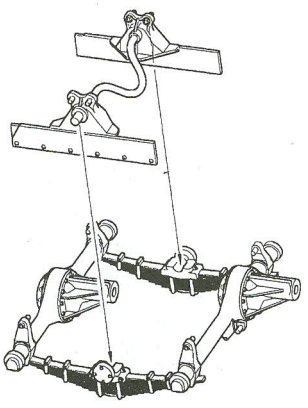
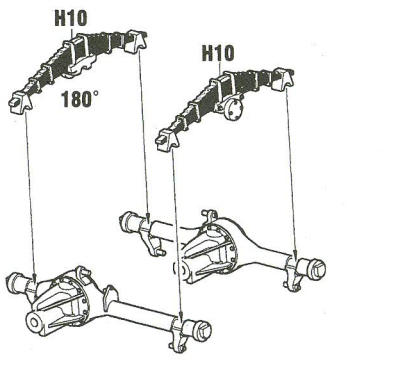
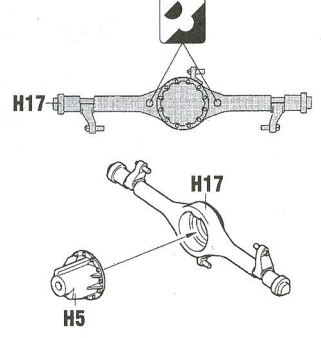
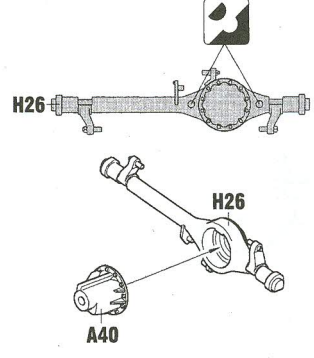
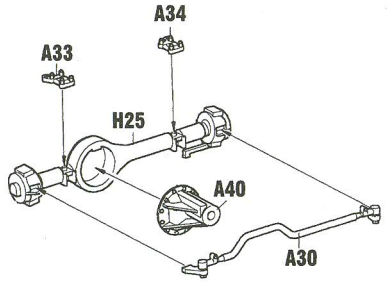
WC62



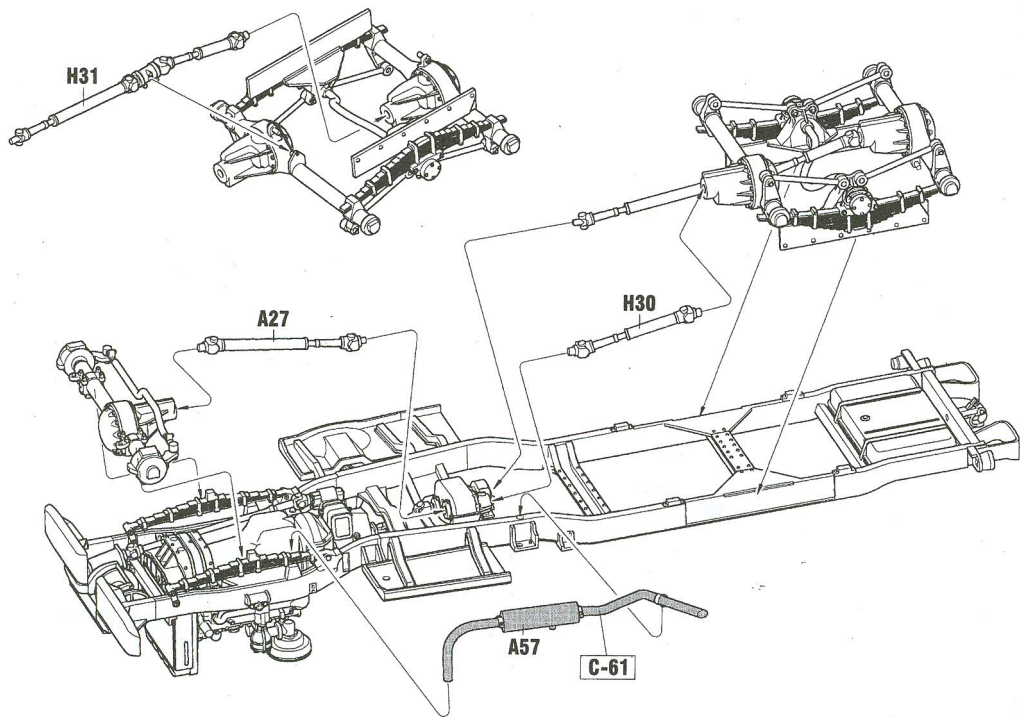
WC63  
WC63 MG



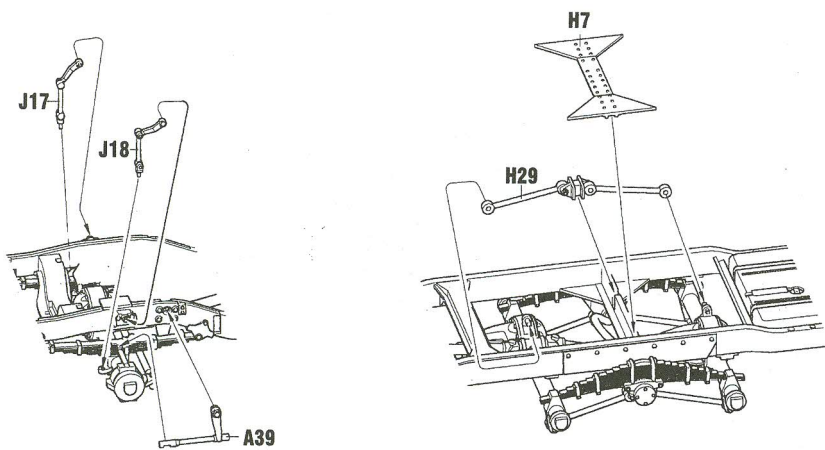
5



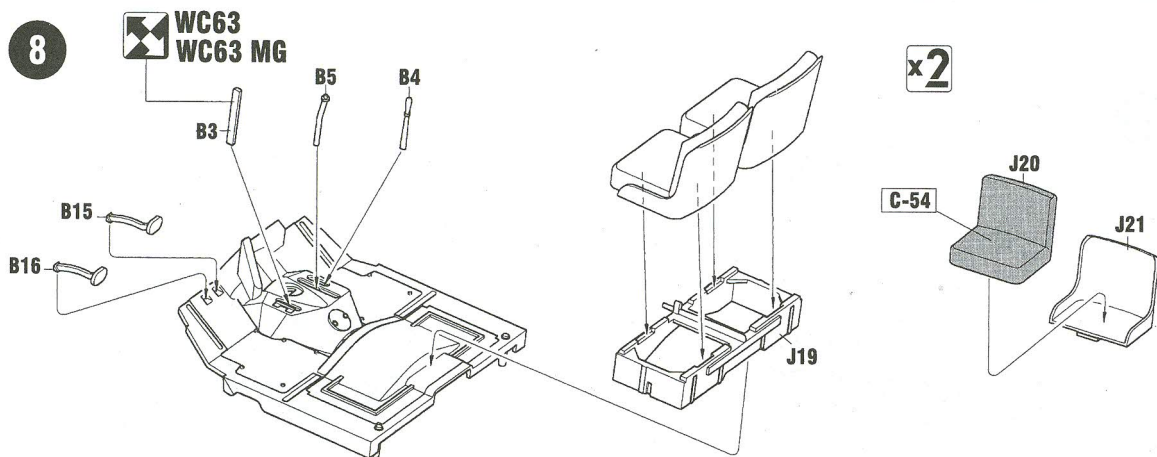
6



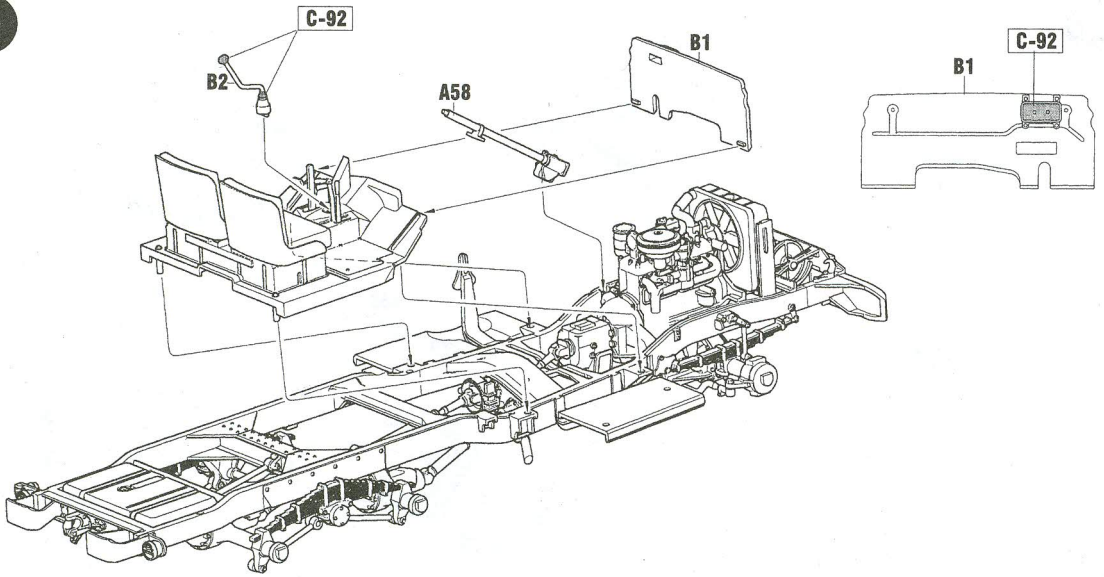
7



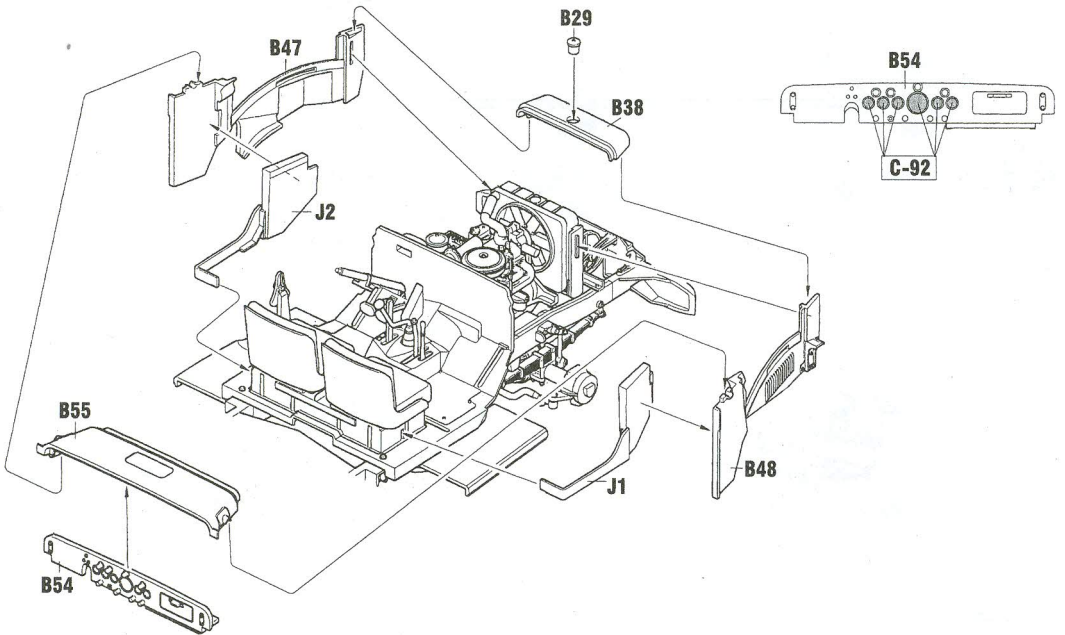
8



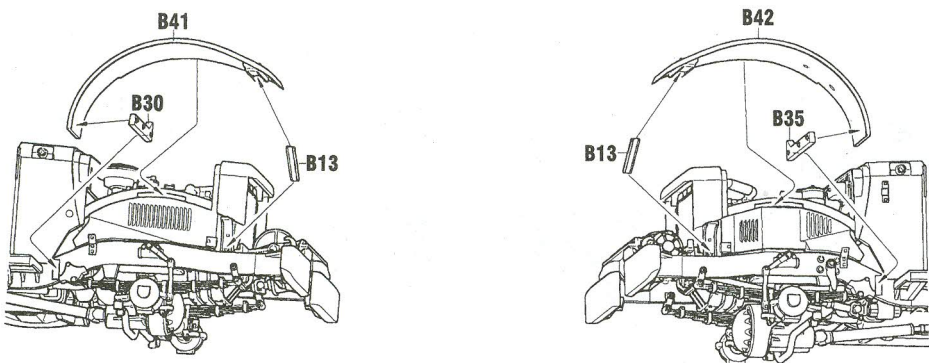
9



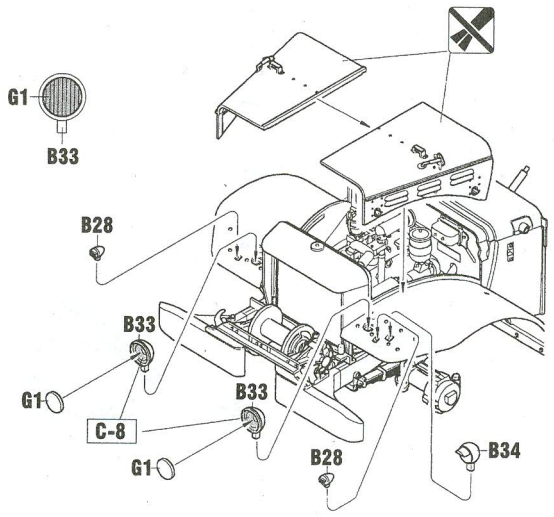
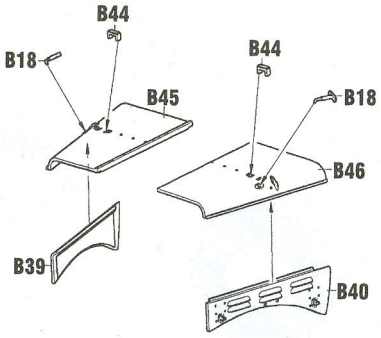
10



11

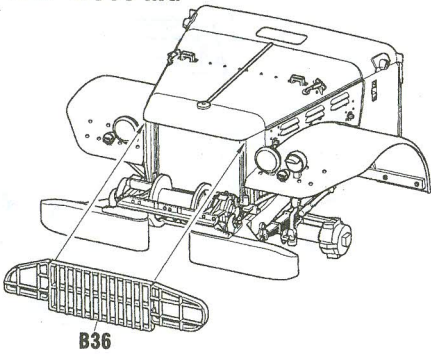


12

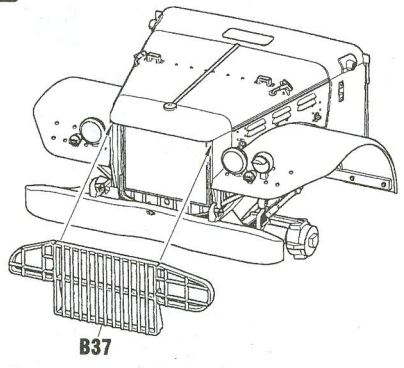


13

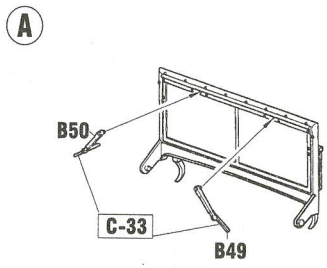
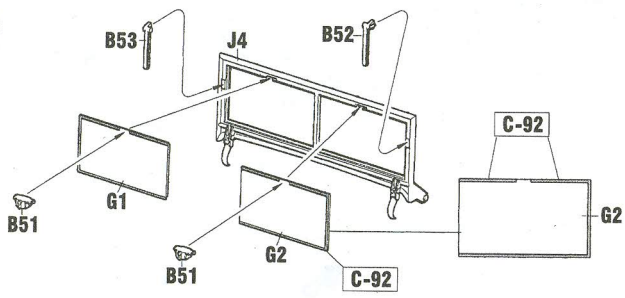
WC63  
WC63 MG



WC62

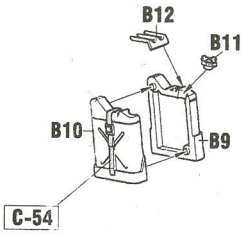


14

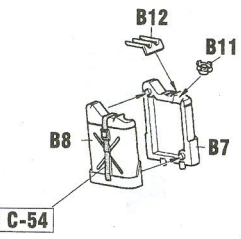


15

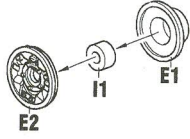
B



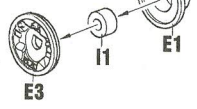
C



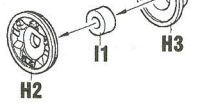
D x2



E x2



F x2



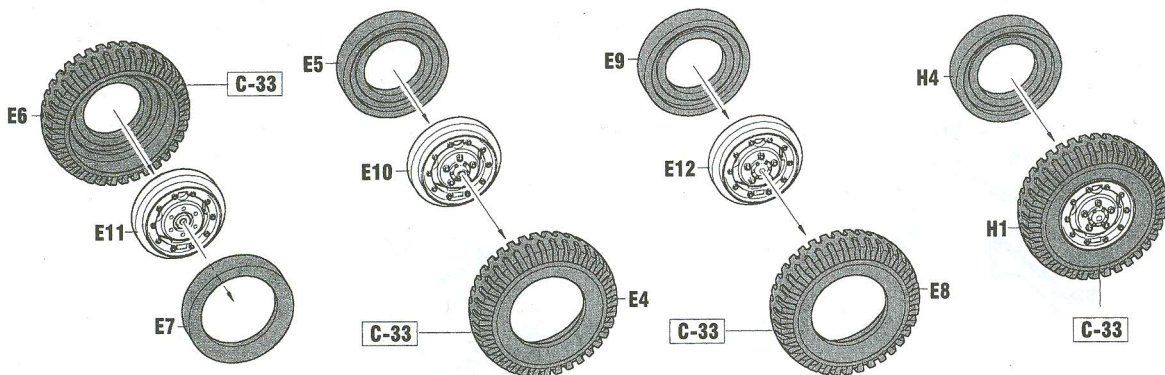
16

G

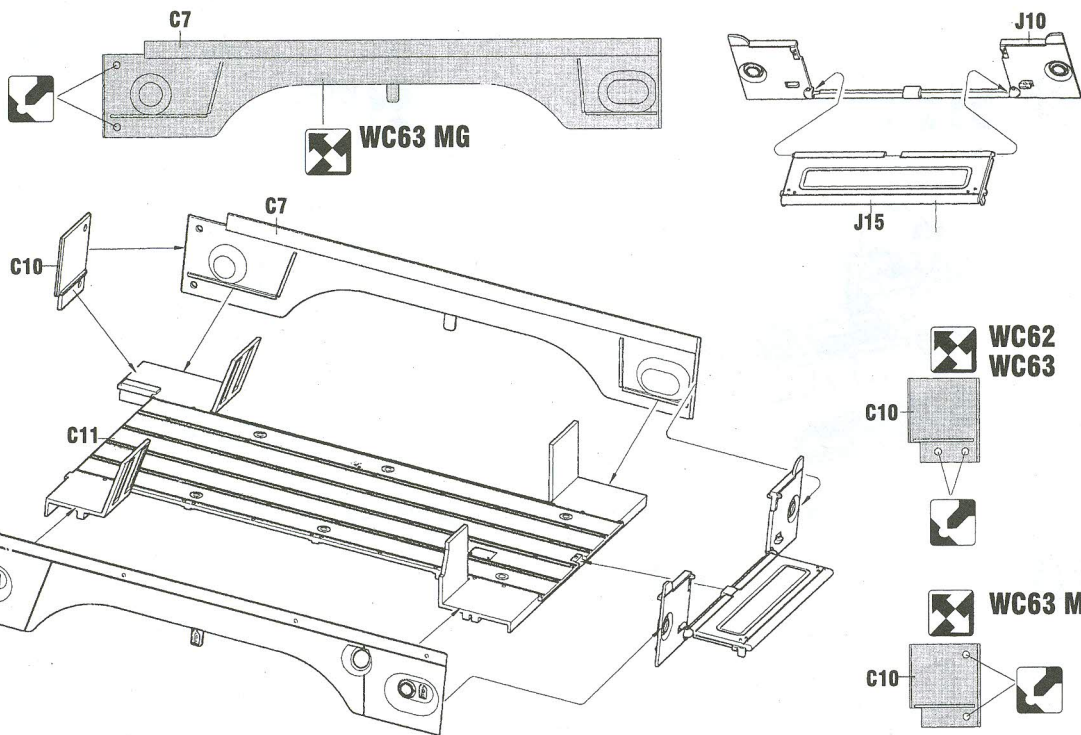
H x2

I x2

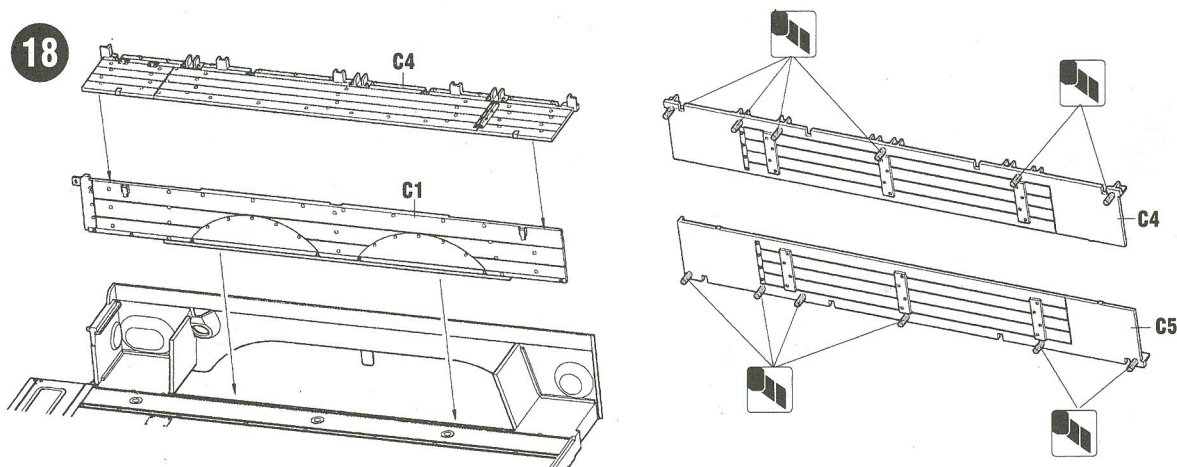
J x2



17

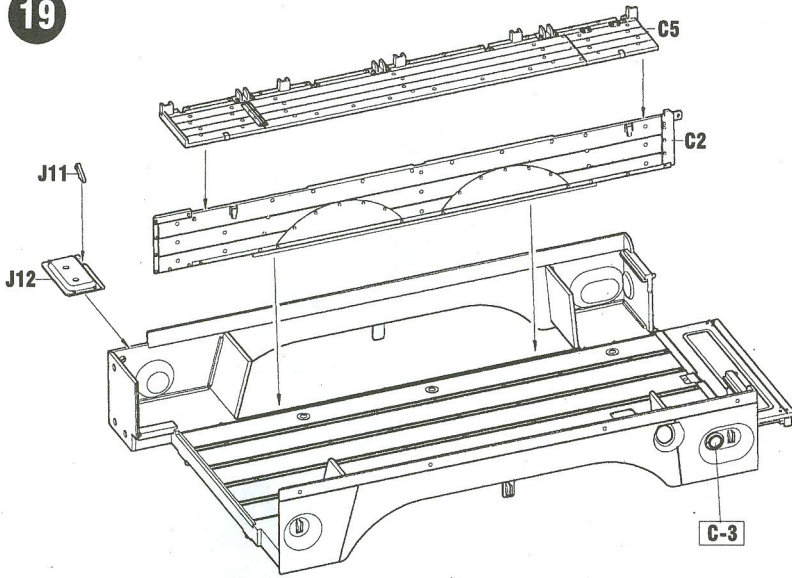


18

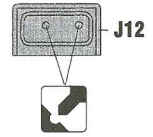




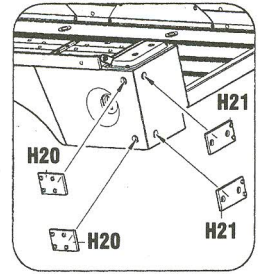
19



 WC63 MG

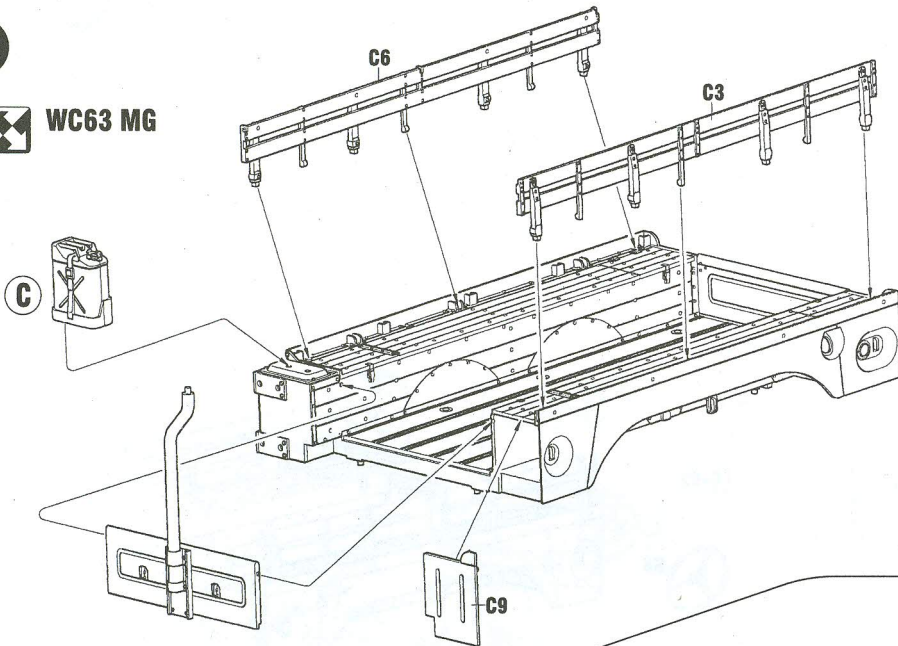


 WC63 MG

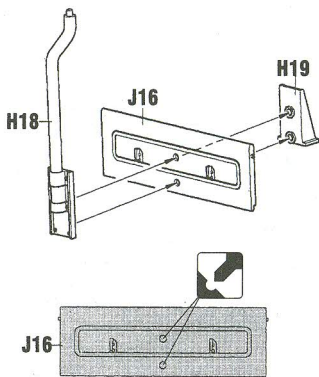


20

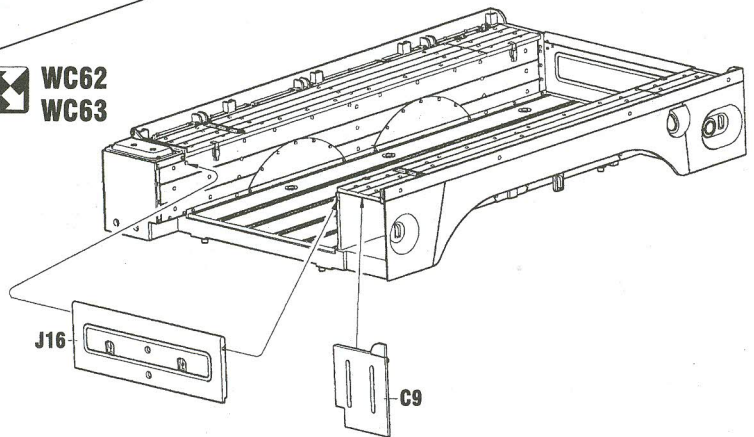
 WC63 MG



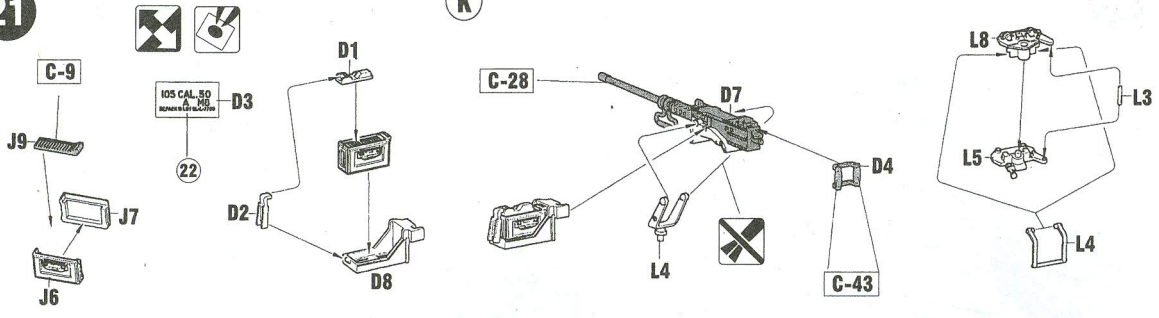
 WC63 MG



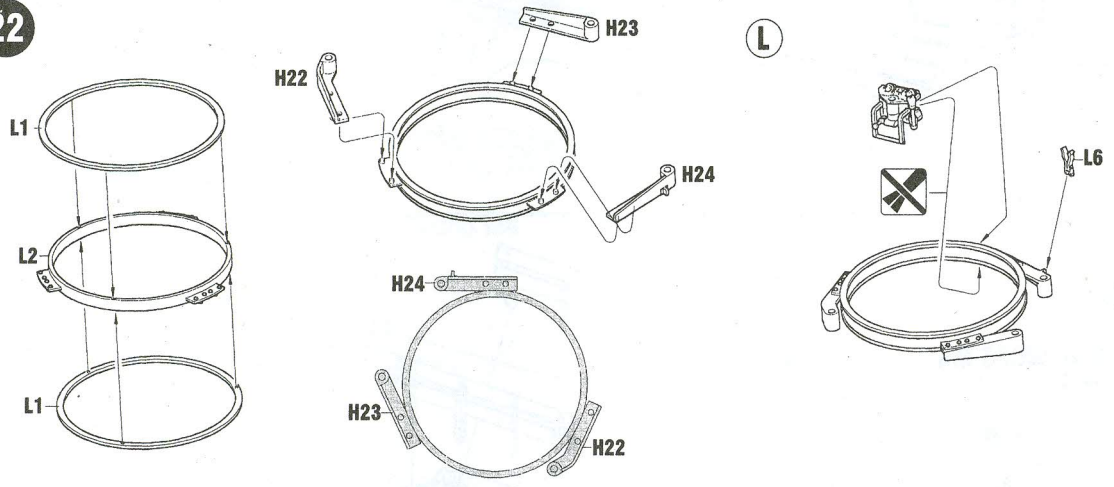
 WC62  
WC63



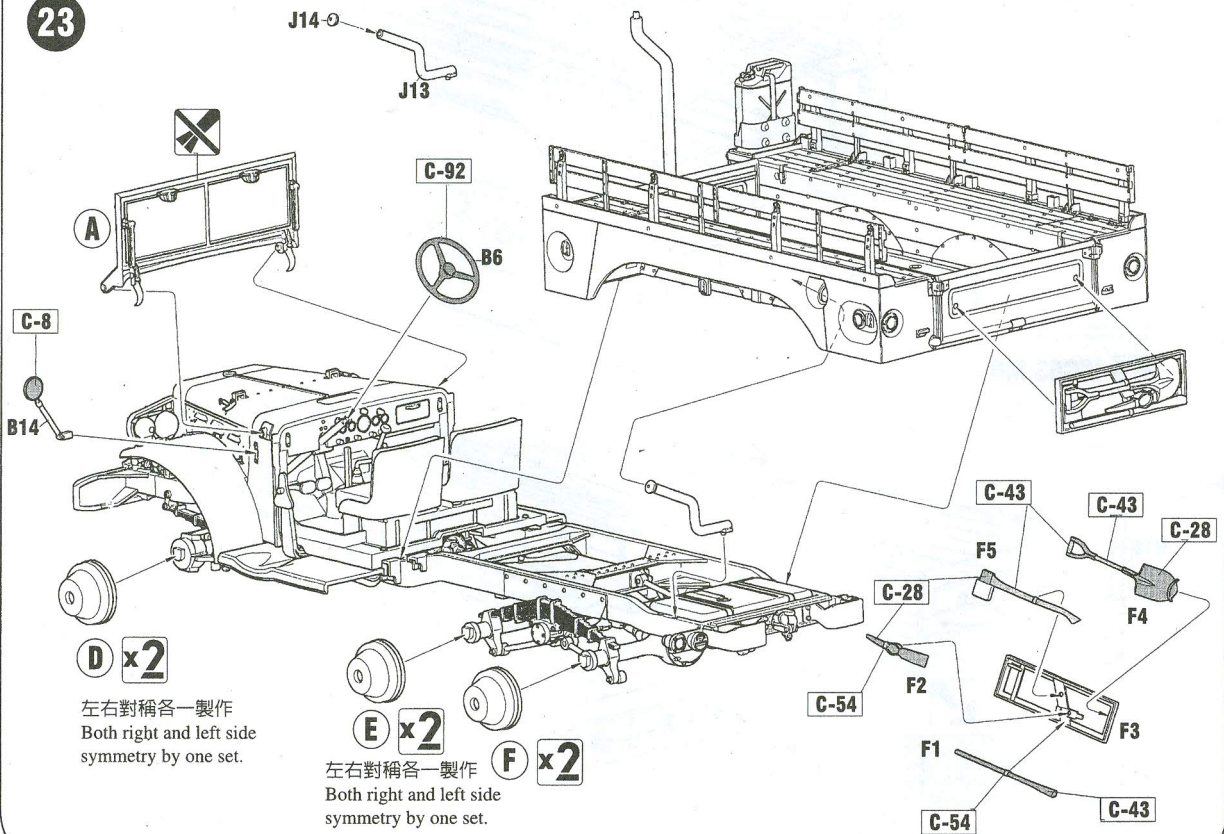
21



22

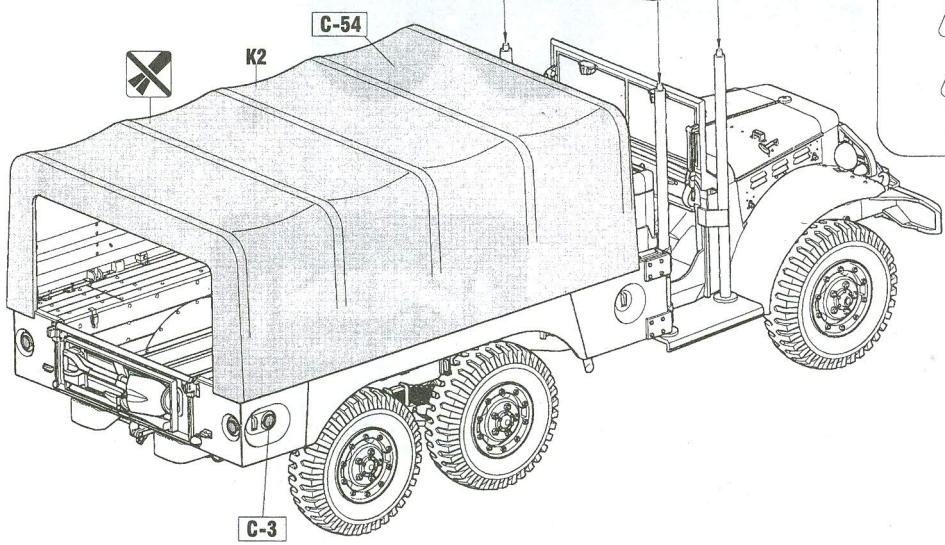
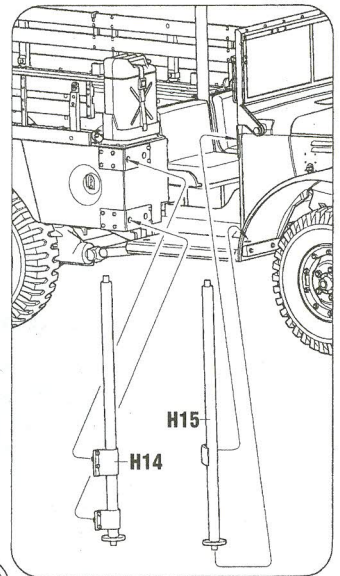
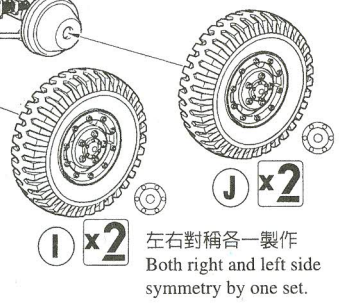
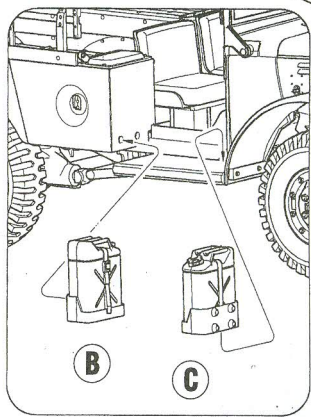
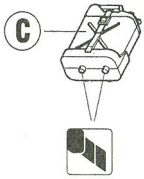
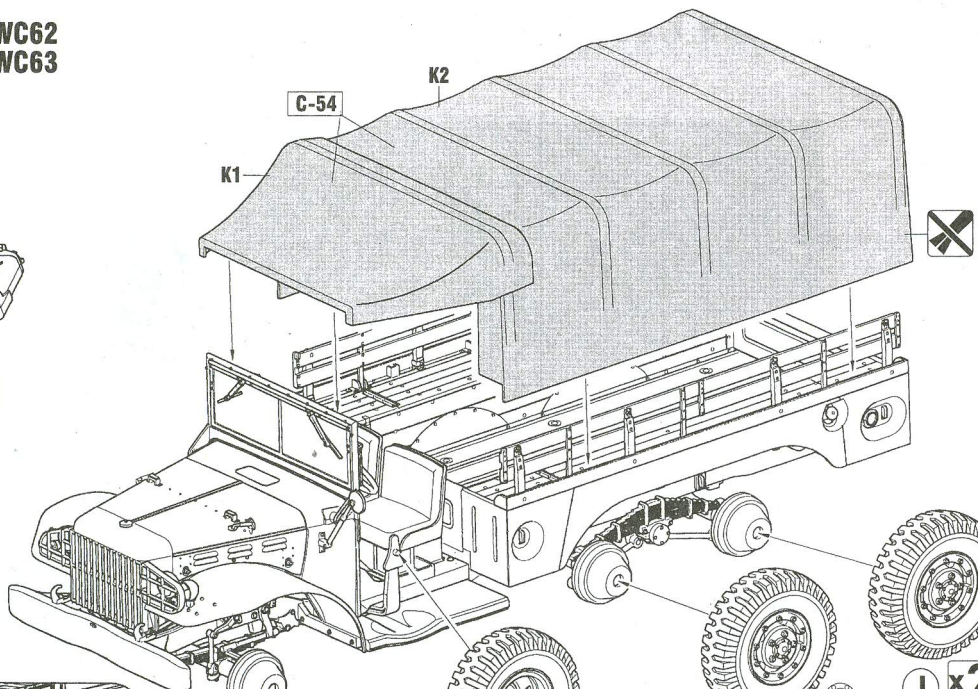


23

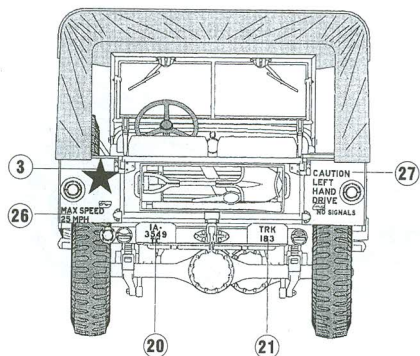
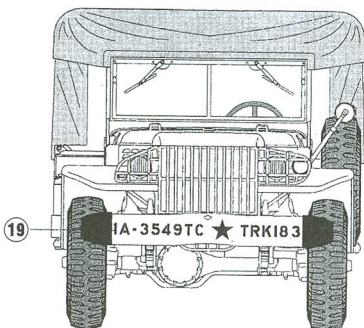
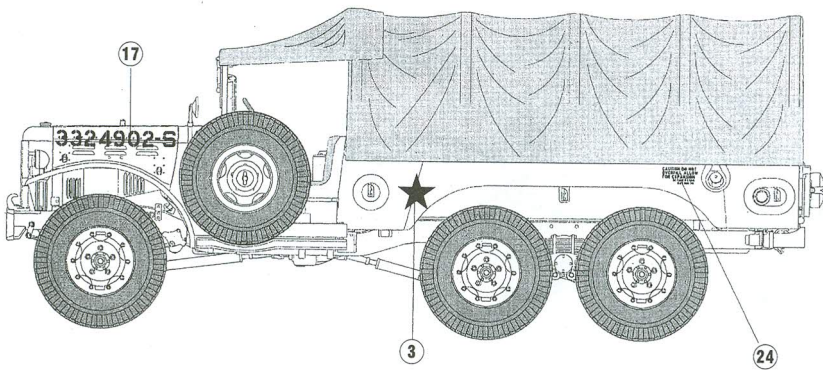
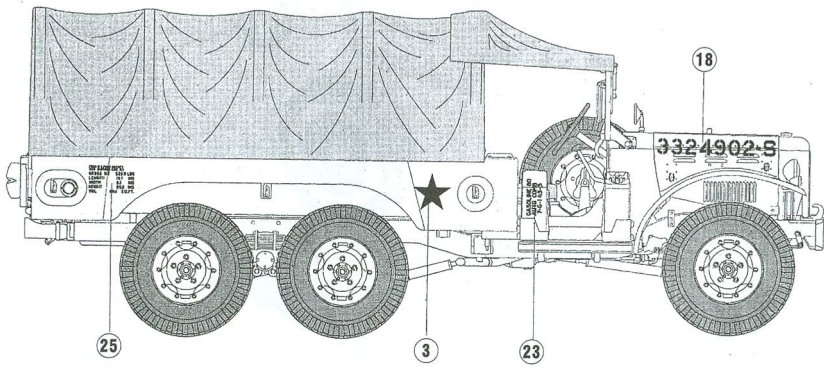
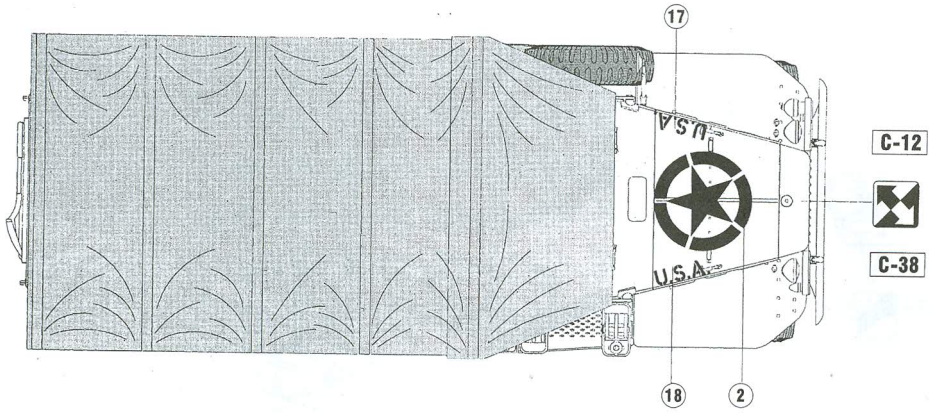


**D x2**  
 左右對稱各一製作  
 Both right and left side  
 symmetry by one set.

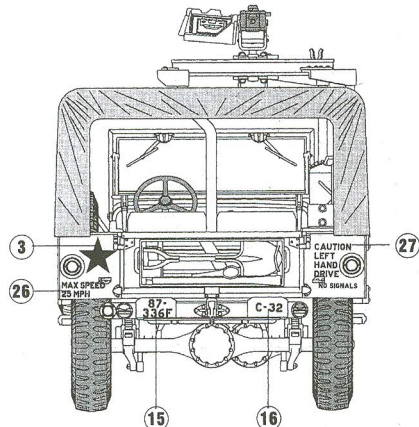
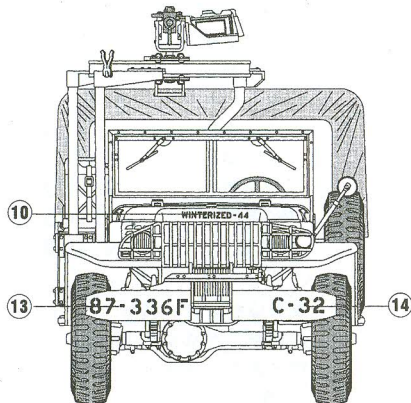
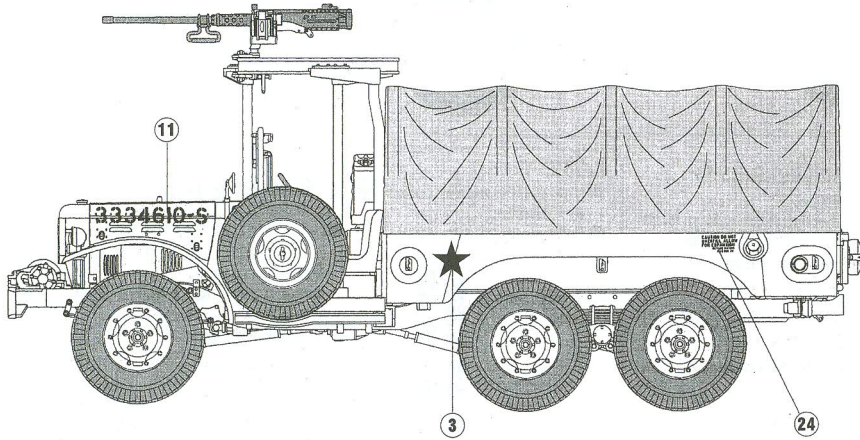
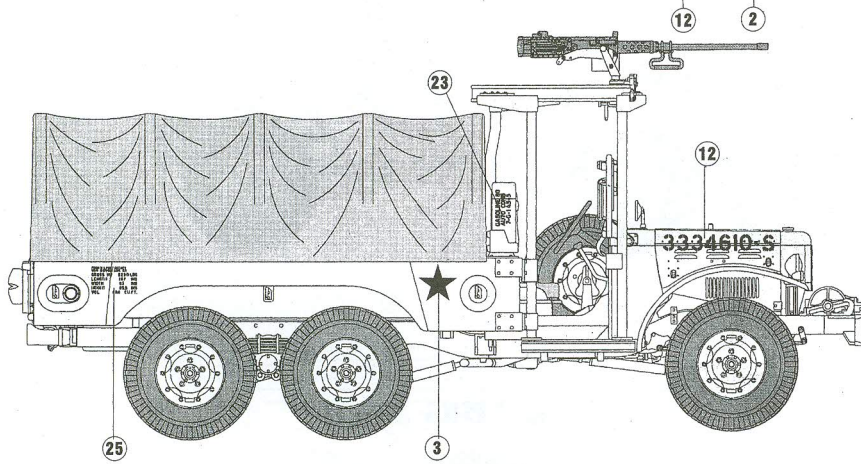
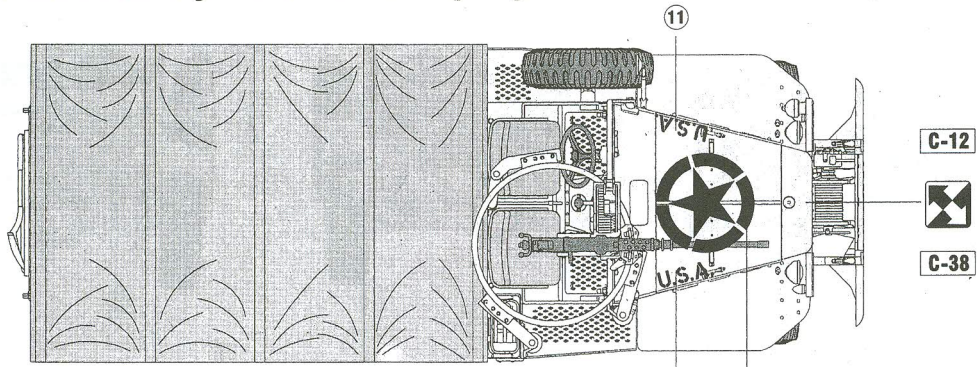
**E x2**  
**F x2**  
 左右對稱各一製作  
 Both right and left side  
 symmetry by one set.



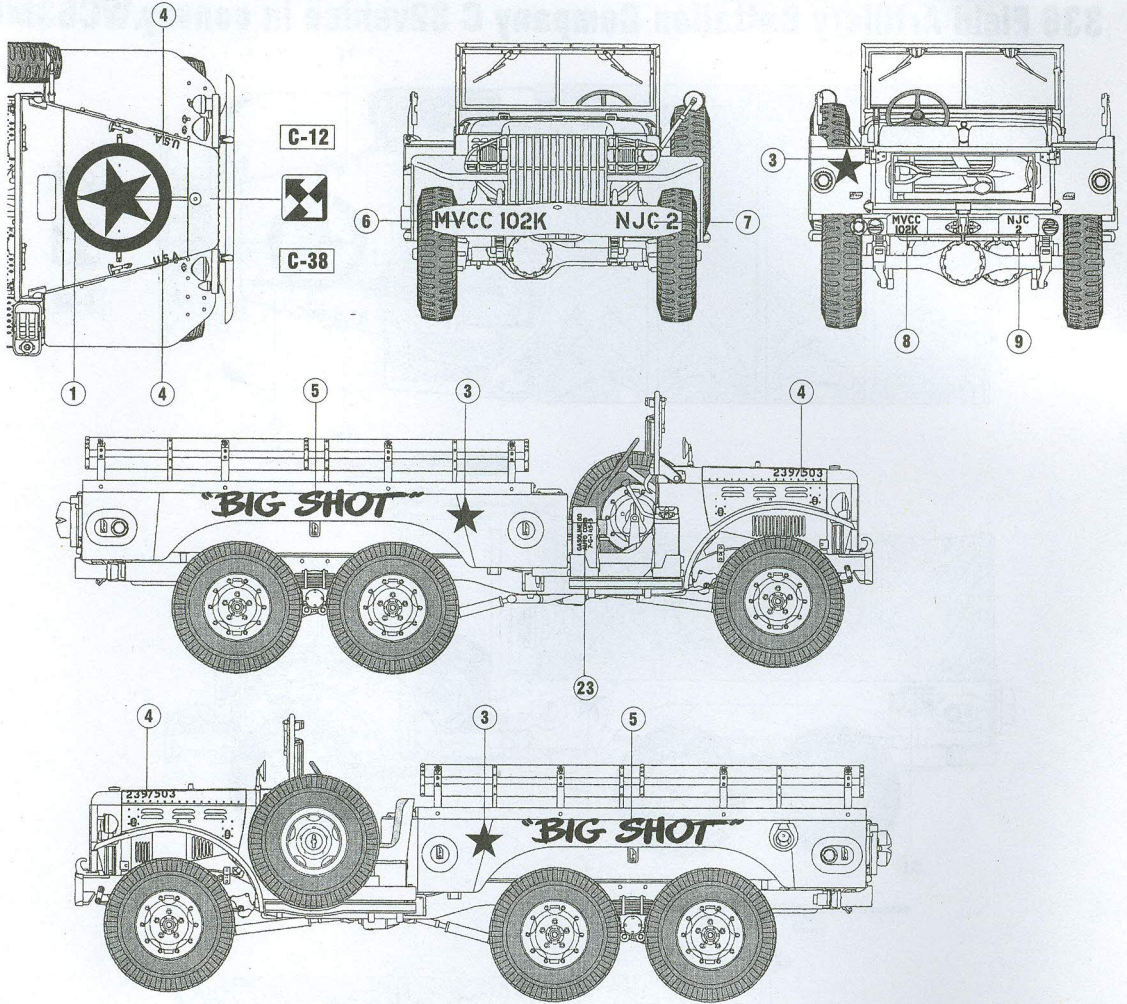
# A: First Army 3549 Truck Company Truck number 183 WC62



**B: 3rd Army. 12th U S Corps 87th "Golden Acorn" Infantry Division  
336 Field Artillery Battalion Company C 32vehicle in convoy.WC63MG**



# C: Prototype vehicle Dubbed "Big Shot" in publicity material WC62




### Instructions:


If for some reason, you are not fully satisfied or have questions concerning our product; Please use the form provide, and send it to our nearest representative or mail it directly to our office.

We will deal with that A.S.A.P.

### 限台灣地區使用 For Taiwanese use only!

總代理：戰鷹企業 客服部收 本公司將盡速為您處理  
請將本表與該部品相同金額之郵政匯票一同寄至

 <b>AF 35S18</b> Parts Replacement Form	
<input type="checkbox"/> A parts <input type="checkbox"/> B parts <input type="checkbox"/> C parts <input type="checkbox"/> D parts <input type="checkbox"/> E parts <input type="checkbox"/> F parts <input type="checkbox"/> G parts	<input type="checkbox"/> H parts <input type="checkbox"/> J parts <input type="checkbox"/> K parts <input type="checkbox"/> L parts <input type="checkbox"/> M parts <input type="checkbox"/> decal parts
Reason for replacement:	<input type="checkbox"/> Missing <input type="checkbox"/> broken
Signature: _____	

	<b>AF 35S18</b> 零件補充申請表	申請人 姓名 地址 電話 : : :
<input type="checkbox"/> A部品零件 <input type="checkbox"/> B部品零件 <input type="checkbox"/> C部品零件 <input type="checkbox"/> D部品零件 <input type="checkbox"/> E部品零件 <input type="checkbox"/> F部品零件 <input type="checkbox"/> G部品零件 <input type="checkbox"/> H部品零件 <input type="checkbox"/> J部品零件 <input type="checkbox"/> K部品零件 <input type="checkbox"/> L部品零件 <input type="checkbox"/> M部品零件 <input type="checkbox"/> 水貼紙	——— NT\$140 ——— NT\$160 ——— NT\$120 ——— NT\$100 ——— NT\$100 ——— NT\$40 ——— NT\$40 ——— NT\$120 ——— NT\$100 ——— NT\$80 ——— NT\$60 ——— NT\$80 ——— NT\$50	
(請填) 總計 NT\$ _____		
零件補充原因: (請於 打 ) 原包裝 <input type="checkbox"/> 遺失或 <input type="checkbox"/> 毀損 製作途中 <input type="checkbox"/> 遺失或 <input type="checkbox"/> 毀損 <input type="checkbox"/> 補充多餘零件 其他原因 _____		