

SCALE
1/35
M985
Gun Truck



ACADEMY
HOBBY MODEL KITS

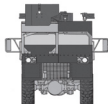
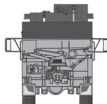
13291

Warning in Assembly of Model Kits
조립전의 주의사항

Take care not to injure yourself while using the modeling tools to cut or trim parts.
공구를 이용하여 부품을 다듬고 자를 경우, 손을 다치지 않도록 주의를 기울여 주십시오.

● Before commencing assembly, referring to 'Painting & Decal placement'.
조립을 시작하기 전 '색칠 및 전사지 붙이기'를 참조하십시오.

● U.S. ARMY, IRAQ, 2003



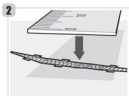
	Humbrol		GSI Creos		Lifecolor	TESTORS / MODELMASTER		Revell		Vallejo				
	ENAMEL	Mf. COLOR	AQUEOUS HOBBY COLOR	Mf. COLOR		ENAMEL	ACRYL	ENAMEL	ACRYL	MODEL COLOR	MODEL AIR			
▼ FLAT BLACK	FS37038	33	33	H12	33	LC02	1749	4768	32108	36108	950	57	무광 검은색	
▼ OLIVE DRAB	FS34807	66	66	H78	38	UA106	1787	4727	32166	36166	887	43	올리브 드라ם	
▼ PALE GREEN	FS34227	120		H312	312	UA060	1716	4739			974	95	패일 그린	
▼ SAND	FS38531	121		H313	313	UA020	1706	4720	32188	36188	914	75	사막색	
▼ RUST	FS30109	180		H33	81	UA088	1785	4675	32183	36183	871		러스트	
▼ RED	FS12006	19	19	H3	3	LC56	1503	2741	32131	36131	957	84	유광 빨간색	
▼ SILVER	FS12178	11	11	H8	8	LC74	2914	4678	32190	36190	997	63	은색	
▼ STEEL	FS12006	53	53	H18	28	LC76	1795	4681	32191	36191	863	72	스틸	
▼ GOLD	FS12043	16	16	H9	9	LC75	1744	4671	32194	36194	996	66	금색	
▼ CLEAR ORANGE	1322			H92	49			4625						투명 주황색

Guide for Beginners
초보자용 가이드

Applying Photo Etched Parts ■ 포토 에칭 부품 적용하기



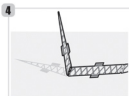
Cut off Photo Etched parts using a utility knife carefully.
사용하려는 에칭 피스를 커터칼로 조심스럽게 잘라냅니다.



Place a flat object like a ruler on the Etched parts.
편지 앞으려는 부분 위에 저와 같이 평면해져 골곡이 있는 물체를 얹어 흔들리지 않게 눌러줍니다.



Place the knife under to bend. And carefully lift the side of the knife to fold the etched parts.
구부러지는 부분 아래에 커터칼을 넣고 커터칼의 뒷쪽을 조심스럽게 들어올려 에칭을 접습니다.



Desired position is folded neatly without damaging other places.
다른 부분의 손상없이, 원하는 부분의 에칭만을 깔끔하게 접을 수 있다.

Icon for photo etched parts
포토 에칭 부품 아이콘

PE Photo Etched Part.
포토 에칭 부품입니다.

Bend
에칭을 접으십시오.

Use instant glue
순간접착제를 사용하십시오.



CAUTION!

-주의-

◀READ THIS BEFORE YOU BEGIN▶
 ◀ALLGEMEINE HINWEISE▶
 ◀LISEZ CE QUI SUIT AVANT DE COMMENCER LE MONTAGE▶
 ◀組み立てる前に▶
 ◀읽기 전에 먼저 읽어주세요▶

◀READ THIS BEFORE YOU BEGIN▶

- Study the instructions before assembling. - Check the fit of each piece before cementing it into place.
- Do not use too much cement to join parts. - Never use cement or paint near open flame.
- Open a window or make sure area well-ventilated when cement or paint is in use.
- Tear up and throw away the empty plastic bags to avoid danger of suffocation for little children.

◀ALLGEMEINE HINWEISE▶

- Die Anordnung der Bauteile ist aus den Zeichnungen der Anleitung ersichtlich.
- Die Teile vor dem Verleimen ungeleimt zusammenhalten, um ihnen passgut zu prüfen.
- Klebefol nicht zu dick auftragen. - Klebefol und Farben niemals in der Nähe einer Flamme verwenden.
- Während der Bemalung mit Spritzpistole oder Pinsel für frische Luftzufuhr, z.B. Öffnen des Fensters, sorgen.
- Bauzeit von kleinen Kindern fernhalten. Verhüten Sie, daß Kinder irgendwelche Bauteile in den Mund nehmen oder Plastikbeut über dem Kopf ziehen.

◀LISEZ CE QUI SUIT AVANT DE COMMENCER LE MONTAGE▶

- Étudier les schémas d'assemblage. - Contrôler que chaque pièce soit bien conforme avant de la coller à sa place.
- N'utiliser pas trop de colle pour réunir les pièces. - Ne jamais manipuler la colle ou peinture à proximité d'une flamme.
- Adher soigneusement le pièce si vous peignez/peintir la peinture.
- Après avoir utilisé les pièces à usage en plastique, éjecter le sac afin d'éviter que les enfants ne le mettent sur la tête et ne s'étouffent.

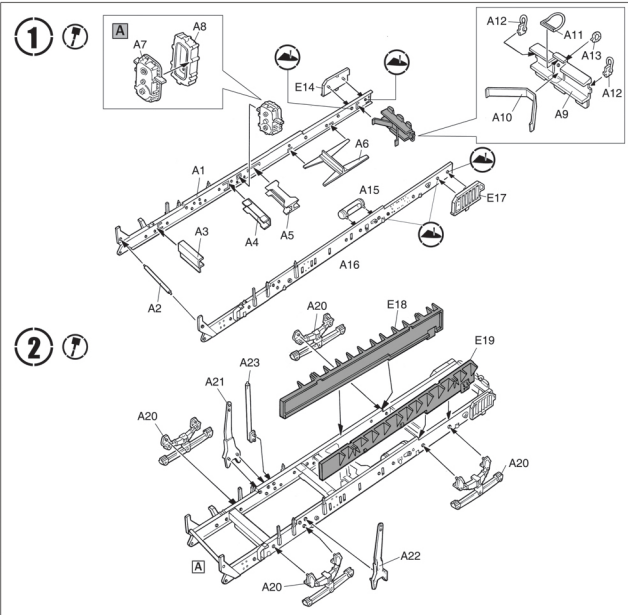
◀組み立てる前に▶

- 組み立てる前に図面をよく読み下さい。 - 部品をラップから取り出すのは必ず指図通りにコピーとシッターを使用します。
- 接着剤を少しだけ塗る程度とすることがお薦めには上げさせていただきます。 - 接着する前に部品を合わせて確かめます。
- 接着剤や塗料を使用する時は子どもたちを遠ざけて換気をしてください。
- 組み立て後の部品やビニール袋は子どもたちの手の届かない安全な場所に保管して下さい。

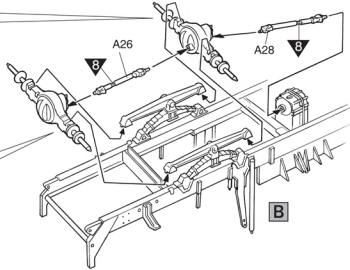
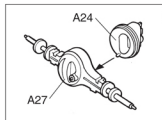
◀조립하기 전에▶

- 부품을 조립하기 전에 설명서를 잘 읽어보 후 조립한다.
- 접착하기 전에 부품을 맞추어 확인한 후 조립한다.
- 부품을 자를 때에는 칼이나 나이프로 깨끗이 잘라낸다.
- 접착제를 사용용 곳과 사용하지 않는 곳에 주의하고 너무 많이 바르지 않도록 한다.
- 이물질 제진이나 접착제를 사용할 때는 환기를 열어 창문을 시키고 화기를 멀리한다.
- 사용 후 남은 부품은 어린 아이들이 손이 닿지 않도록 잘 처리한다.

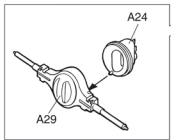
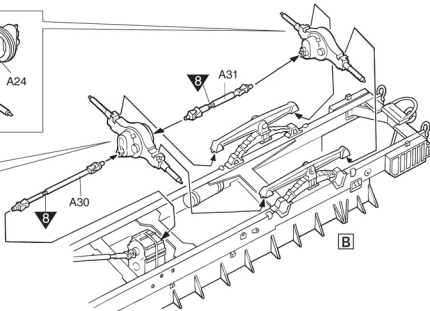
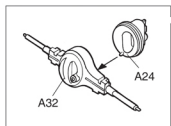
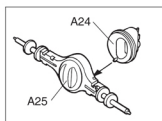
접착제 사용 Glue Kleben	접착제 남기지 마세요 Do not cement No glue Nicht kleben	2 이물질 제진 Foreign operation Vermeidung wachsender Körper	DECAL 스티커를 떼지 마세요 Do not remove Détachez Décollez Abheben	9 자를 때 주의하세요 Achtung Leser Geisetz	1 구멍이나 통을 막아주세요 Use filter Mündung Schützen
잘라내기 Cut away Coupier Schneiden	선택적 부품 Optional parts Option Ausstattungsbauteile	이물질 수리 Repair for optional side Reparatur der optionalen Seite Wartung für gegenüberlie- gende Seite	자를 때 주의하세요 Achtung Fahre vorsichtig Other	주의하세요 Be careful Fahre vorsichtig Hier Vorsicht	1 구멍 도 막아주세요 Painting scheme number Numéro de la liste de peinture Lackieranschlusnummer



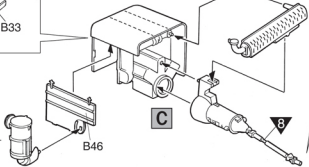
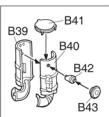
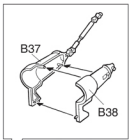
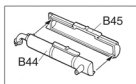
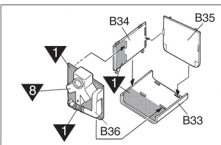
3 



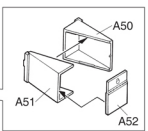
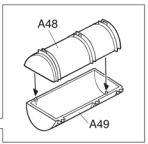
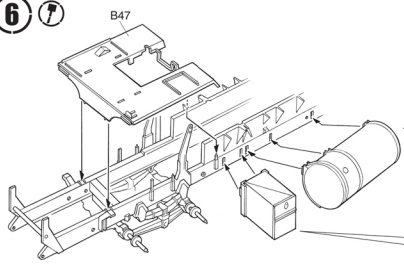
4 



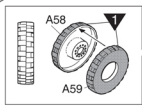
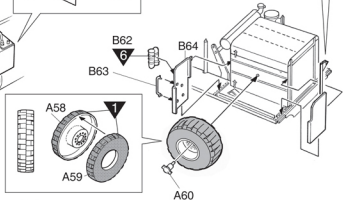
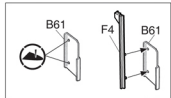
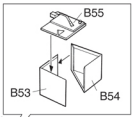
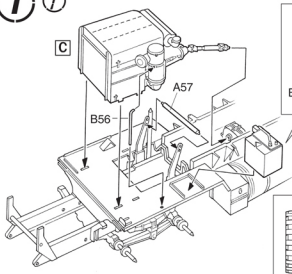
5 



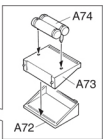
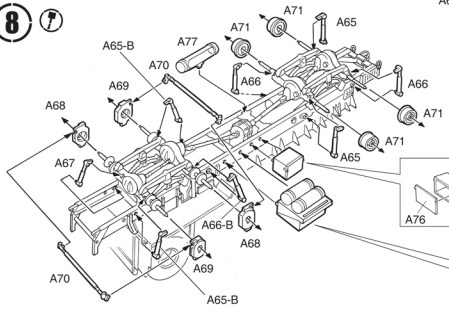
6 **7**



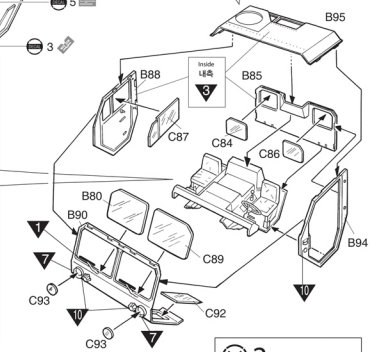
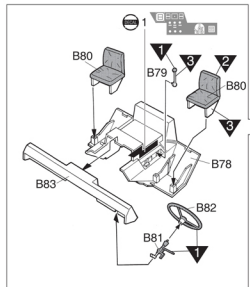
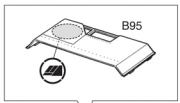
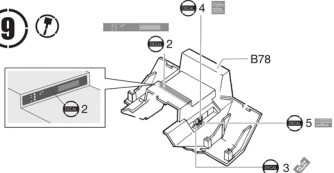
7 **7**



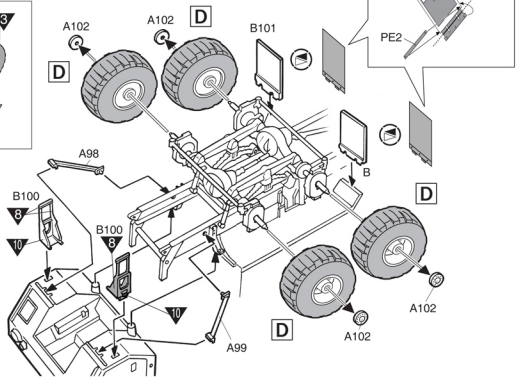
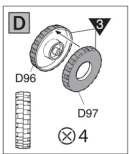
8 **7**



9 



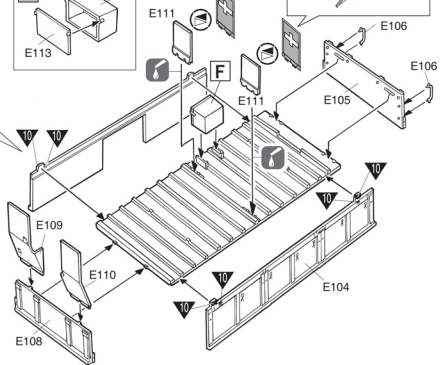
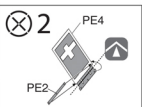
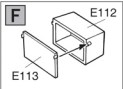
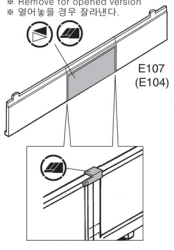
10  **PE**



11  **PE**

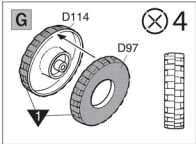
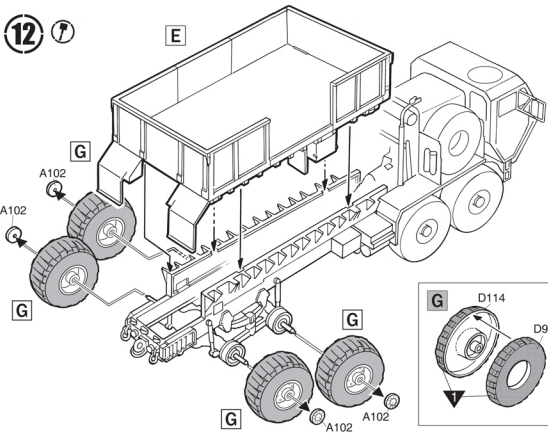
E ※ () is opposite number.
 ()는 반대쪽 번호입니다.

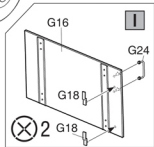
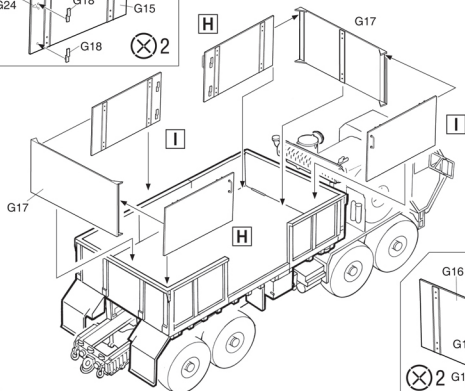
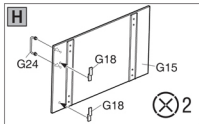
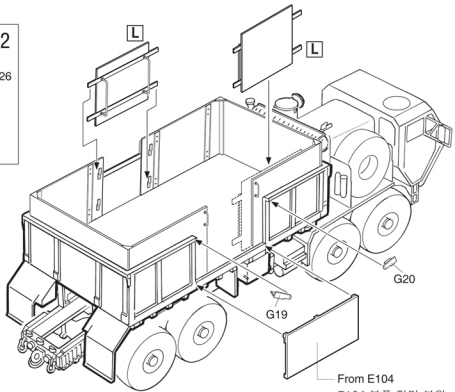
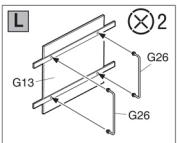
※ Remove for opened version
 ※ 열어놓을 경우 잘라낸다.



12 

E

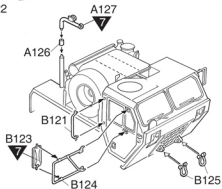
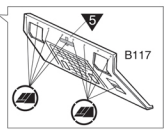
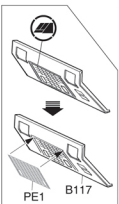
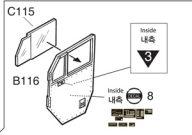
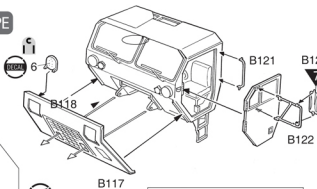


13**14**

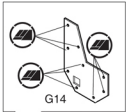
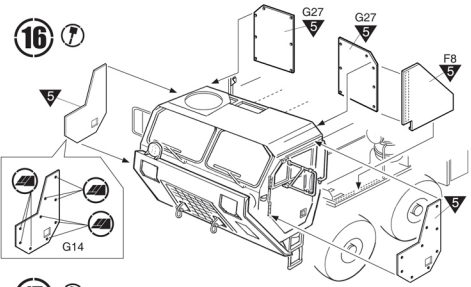
From E104
E104 부품 절단 부위

* G19, 20은 G22 부품 위에 있습니다.
(런너에 제품 번호가 표기되어있지 않습니다.)

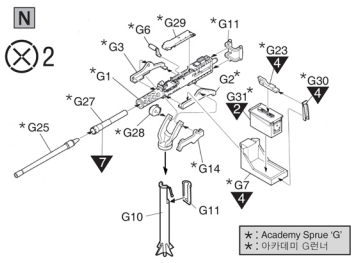
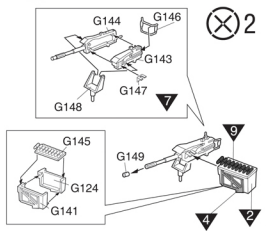
15 PE



16

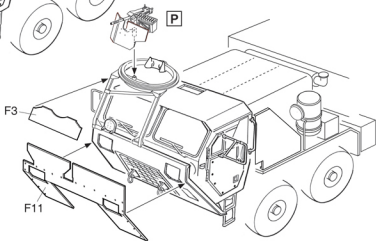
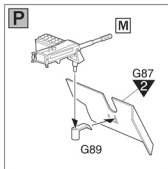
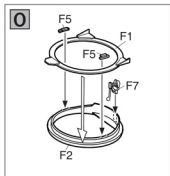
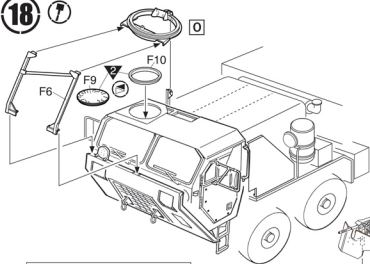
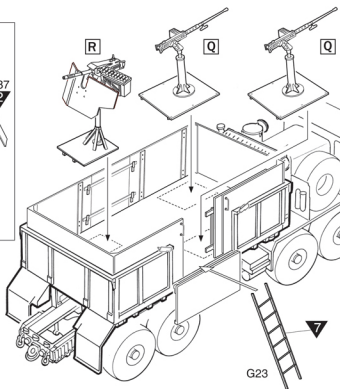
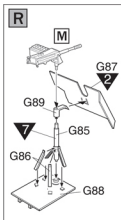
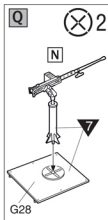


17

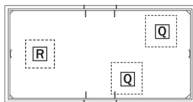


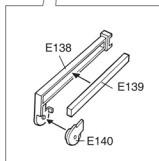
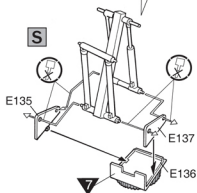
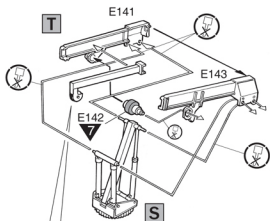
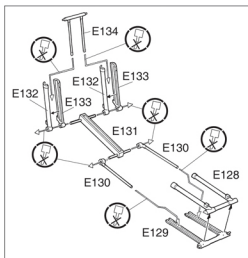
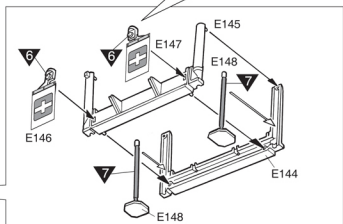
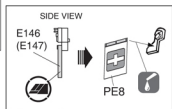
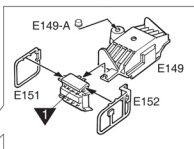
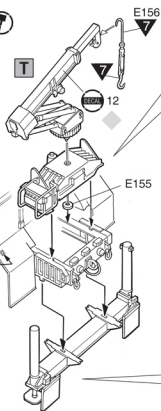
* : Academy Sprue 'G'
* : 아카데미 G런너

* To be continued on separated manual. / 별도 설명서에서 계속됩니다.

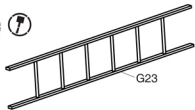
18 **19** 

※ Suggested Position of Weapons
무장 배치 예시



20**21**

22 ①



G9

2

G8



G3

G2

G1

4



G25

2

G22

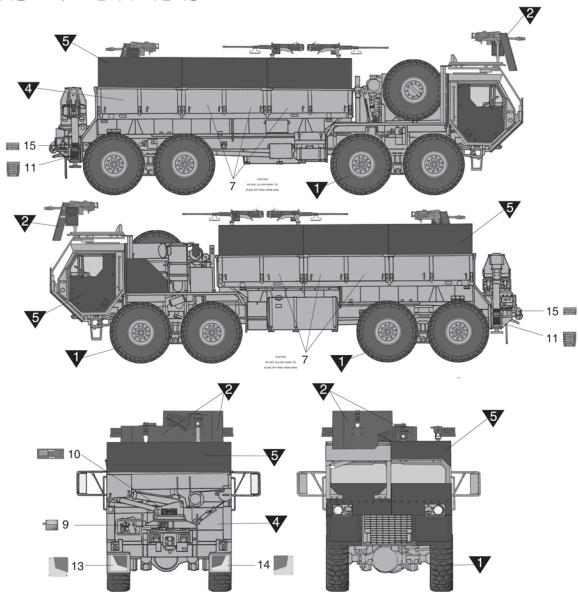
G21

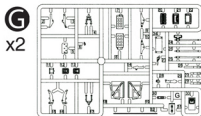
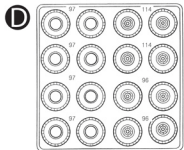
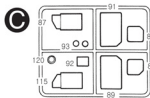
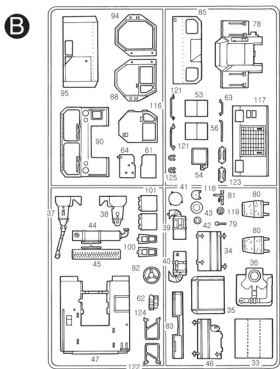
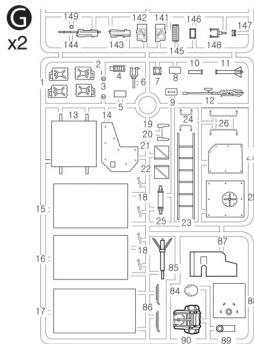
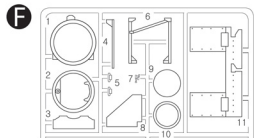
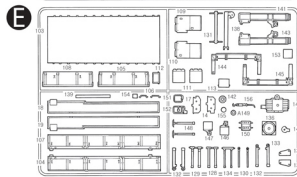
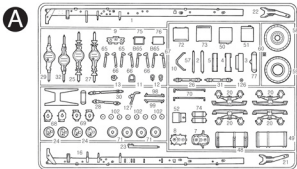


▶ painting & decal placement/ 색칠 및 전사지 붙이기

■ M985, U.S.Army, Iraq, 2003.

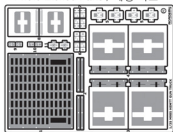
미육군 M985, 2003년 이라크 주둔 차량





* : Academy Sprue 'G'
* : 아카데미 G만나

• Photo Etched Parts / 에칭 파트



• Decal / 전사지

• Unused parts / 불발요 부품

<ITALERI / 이탈리아>
C120, E153, G4x2, G5x2, G6x2, G7x2, G8x2, G9x2, G12x2
<ACADEMY / 아카데미>
G5x2, G8x2, G9x2, G10x2, G12x2, G13x2, G18x2, G24x2, G25 X2, G27x2, G33x2.