



AEC

"Matador" Gun Tractor

MIDDLE VERSION

英國AEC鬥牛士火炮牽引車

**Special thanks from the bottom of our heart to:
Ossie Orsborn

During the 1930's before outbreak of world war two, great powers are all enthusiastic in developing motorized transportation for artillery unit.

Associated Equipment Company briefed as AEC, famous by designing double-deck bus, also engaging in producing military vehicles, under the request of Ministry of War Transport during that time.

The four-wheel drive middle artillery tractor designed by AEC is developed from its own two-wheel drive vehicle, the original design is to pull 5.5 inches howitzer or 3.7 inches anti-air gun, however the vehicles are used in multipurpose during the war time. According to the naming tradition of the company, the first letter of trucks are always started with letter "M", therefore the vehicle is named as "Matador", at the beginning the vehicle is equipped with gasoline engine, later redesigned with more powerful O853 7580cc diesel engine, the vehicles are mainly supplied to British army and other nations of commonwealth, some vehicles even supplied to support red army. There are totaled 8612 "Matador" being produced, during the whole war time till 1945.

第二次大戦勃発前の1930年代に、列強各国は砲兵部隊輸送の機械化のための車輛開発を積極的に進めた。二階建バスの製造で知られるAEC社はこの時、英戦争運輸省の要請で軍用車輛の製造も行っていった。

AEC社の設計した、中型の四輪駆動砲牽引車は、同社の二輪駆動の車輛を基に開発された。もともとは5.5インチ榴弾砲や3.7インチ高射砲の牽引を用途としていたが、戦時には多目的車輛として幅広く使用されたのだった。トラックに頭文字が"M"で始まる名称をつけるというAEC社の慣習にのっとり、この車輛は「マタドール」と命名された。当初はガソリンエンジンを搭載していたが、後により強力なO853 7,580ccディーゼルエンジンに変更されている。

マタドールは主に英陸軍と連邦国に供給されたが、一部ソビエト軍にも供給された。その生産は、1945年まで大戦を通じて行われ総計8,612輛が製造されたのであった。

二次大戰爆發前的1930年代間，列強各國競相加速推動火砲運輸的機械化，以生產倫敦紅色雙層公共汽車而知名的聯合設備公司，在戰爭運輸部的合約要求下，也在此時轉而成為生產軍用車輛的供應商。

AEC旗下的四輪驅動中型火砲牽引車由民用的二輪驅動車發展而來，自1939年開始生產，原本計畫做為沉重的5.5吋加農砲或是3.7英吋高射砲的運輸工具，但在實際運用時卻也經常被轉換作為其它用途。

按AEC過去的慣例，貨車以M字母為開頭，此車被命名為鬥牛士，初期生產型採用汽油發動機，爾後更換為更強大的O853 7580cc柴油引擎，主要供應英國陸軍及國協成員使用，其中部分車輛並，援助蘇聯進入紅軍中服役。生產期間橫跨整個大戰，至1945年為止共生產數量達到8612之譜。

Illustration:圖示說明



Method For Applying Decals:

1. Clean Model Surface With Wet Cloth.
2. Cut Out Of Decal Sheet And Dip Them In Warm Water For 15 Seconds.
3. Place it on proper position on model.
4. Slide off base paper leaving decals On Model With Wet Finger Tip.
5. Move Decals To Exact Position, Push Out Excess Water Under Decal With Soft Cotton Cloth.
6. When Decals Get Dry Then Complete.

水貼紙使用說明:

1. 將模型表面擦乾淨
2. 將貼紙剪下泡入溫水中浸泡約15秒
3. 將泡濕之貼紙取出置於欲貼處旁
4. 用指尖輕推貼紙表面使其滑出底紙
5. 將貼紙調整至適當位置並輕擦拭水份
6. 待其自然乾燥後即完成

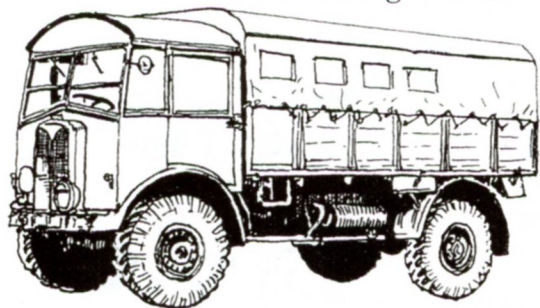
Color list: 塗料表

Color	Brand	Gunze Sangyo			Humbrol	Revell	Lifecolor
		Hobby Color	Mr.Color	Mr.Color Spray			
Brass	黃銅	H9	C9	J9	54	92	LC75
Dark earth	深土	H72	C22		29	87	UA72
Flat black	消光黑	H12	C33	J33	33	8	LC02
Flat white	消光白	H11	C62	J62	34	05	LC01
Gray FS26440	灰	H325	C325		183		UA24
Khaki green	卡其綠	H80	C54		159		UA221
Red	紅	H3	C3	J3	19	31	LC56
Red brown	紅褐	H47	C41		160	383	UA085
Sail color	帆布	H85	C45		28		UA099
Silver	銀	H8	C8	J8	11	90	LC07
Steel	黑鐵	H18	C28	J28	53	91	LC76
Tire black	輪胎黑	H77	C33+C62		85	302	LC02
Wood brown	木棕	H37	C43		169		FS12
Yellow FS33531	黃	H313	C313		121		DR05

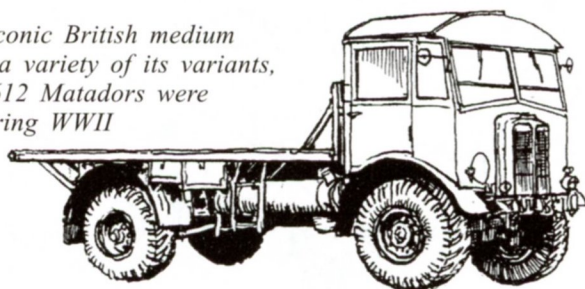
AEC Family

Matador gun tractor

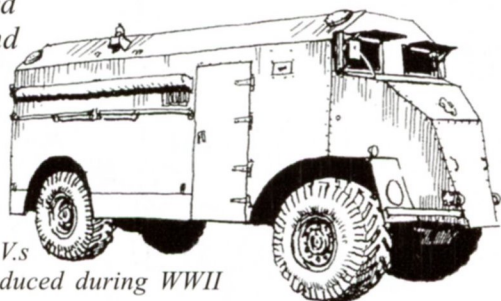
Tractor used by Royal Air Force



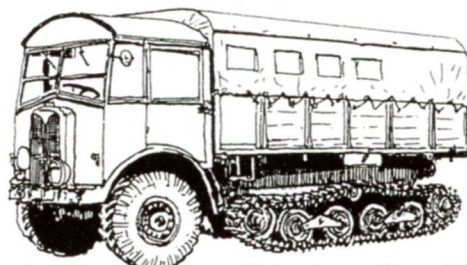
The most iconic British medium tractor with a variety of its variants, A total of 8612 Matadors were produced during WWII



Armoured Command Vehicle



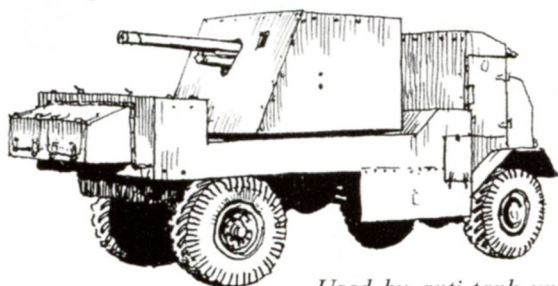
416 A.C.V.s were produced during WWII



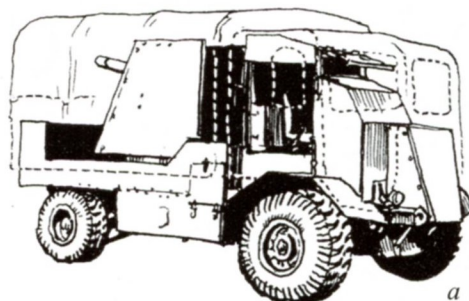
Matador Half Track

Experimental modification, Some parts of Valentine tank were used on the bogie

AEC 6pdr Gun Carrier "Deacon"



Used by anti-tank units during North African Campaign

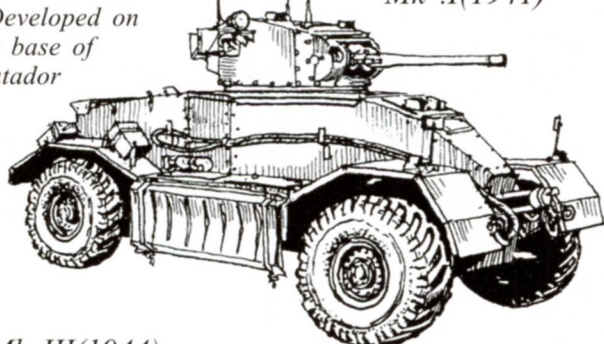


Deacon with canvas cover disguised as a matador truck

AEC Armoured Car

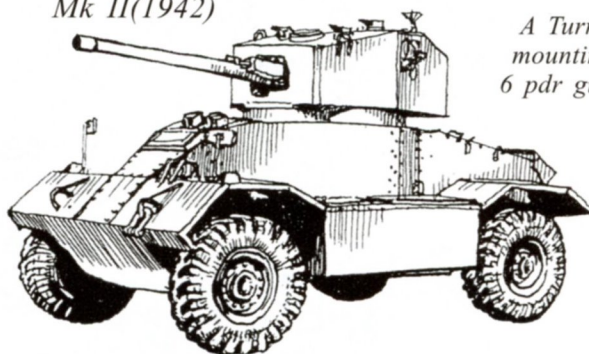
Developed on the base of Matador

Mk .I(1941)



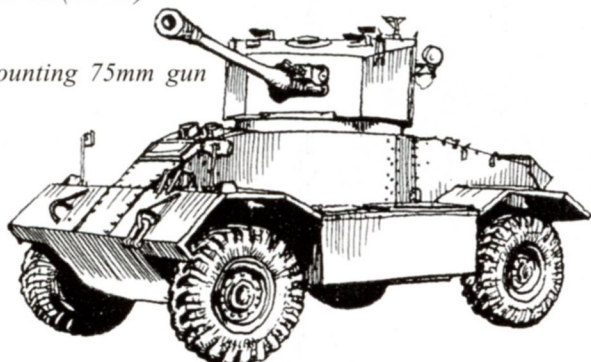
Mk II(1942)

A Turret mounting 6 pdr gun



Mk III(1944)

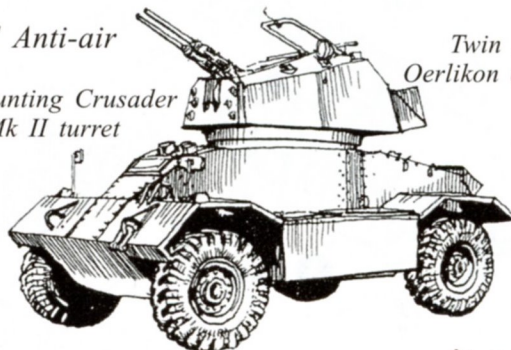
Mounting 75mm gun



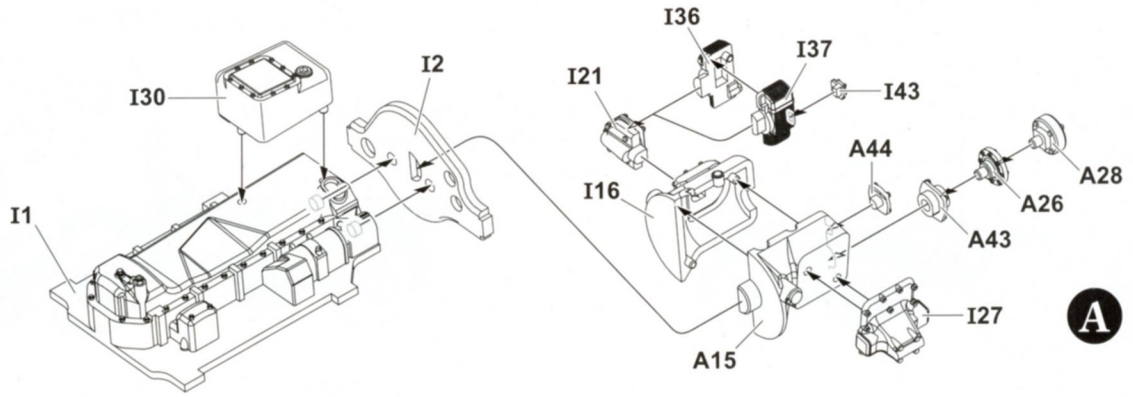
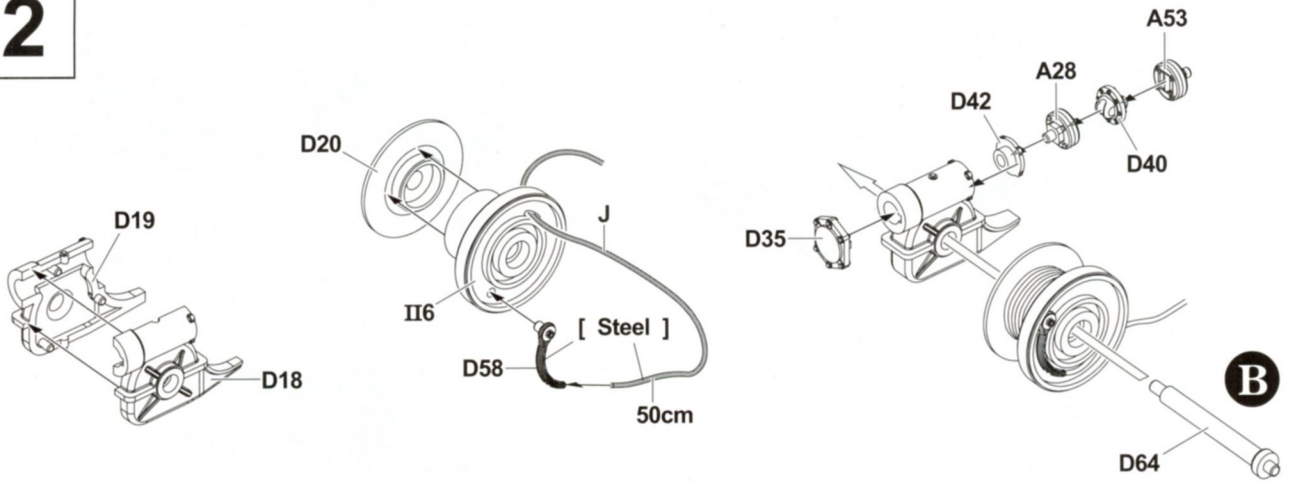
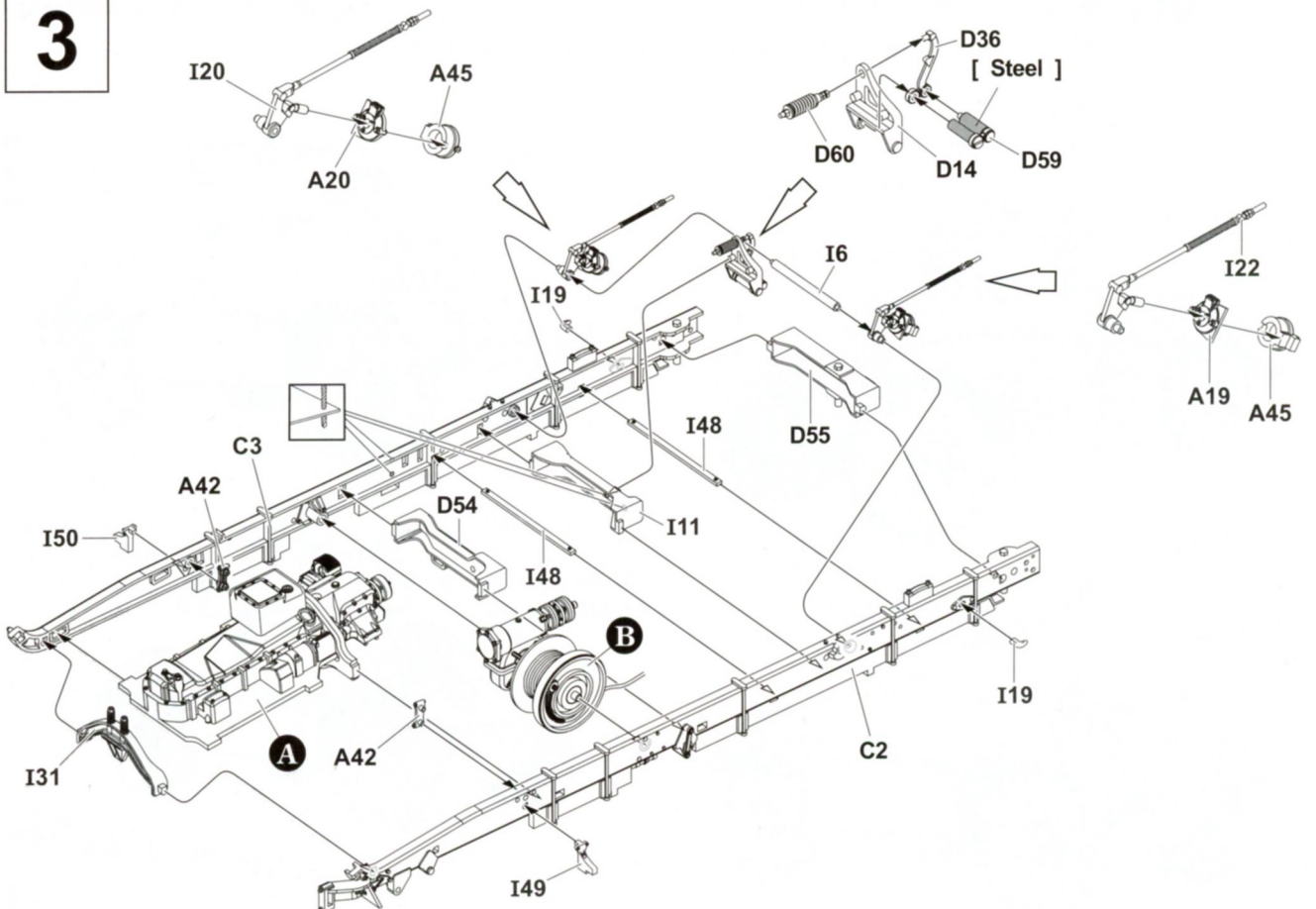
AEC Anti-air

Mounting Crusader AA Mk II turret

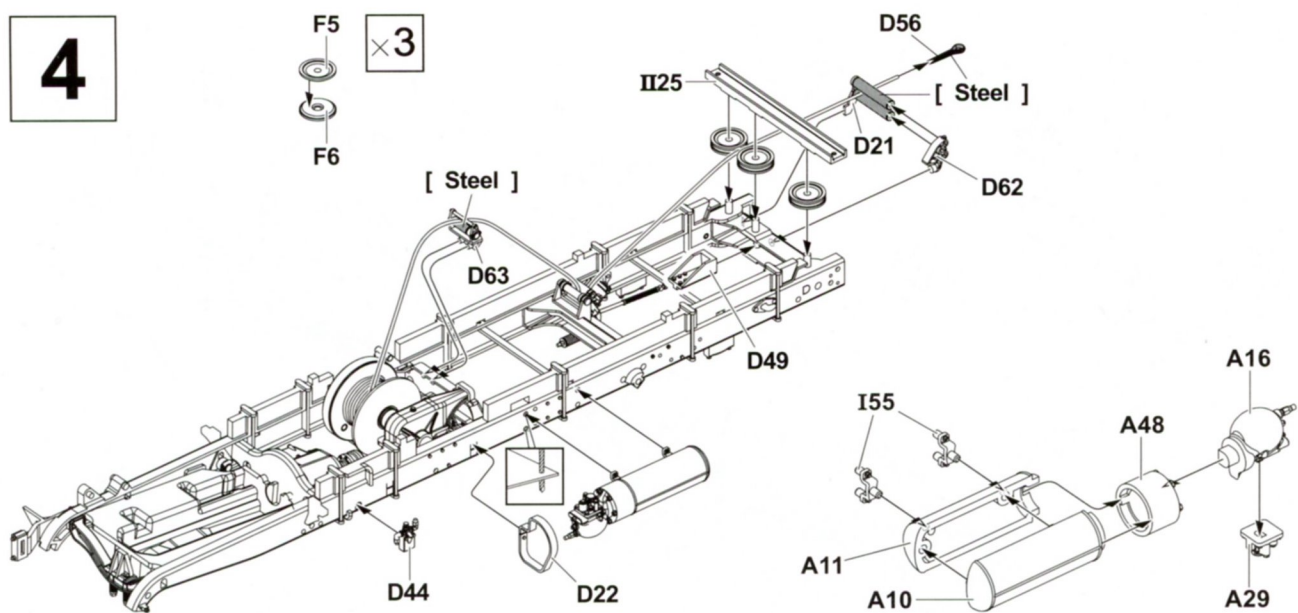
Twin 20 mm Oerlikon cannon



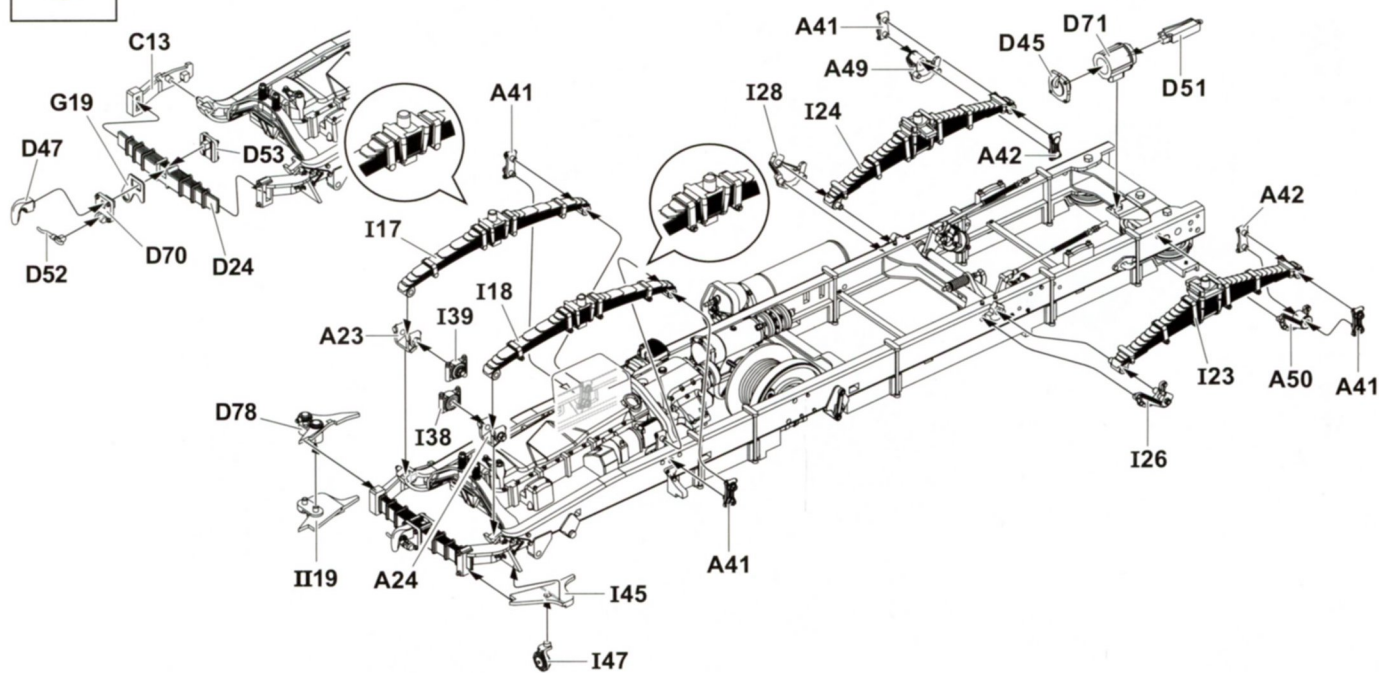
Shin.ueda
上田 信

1**2****3**

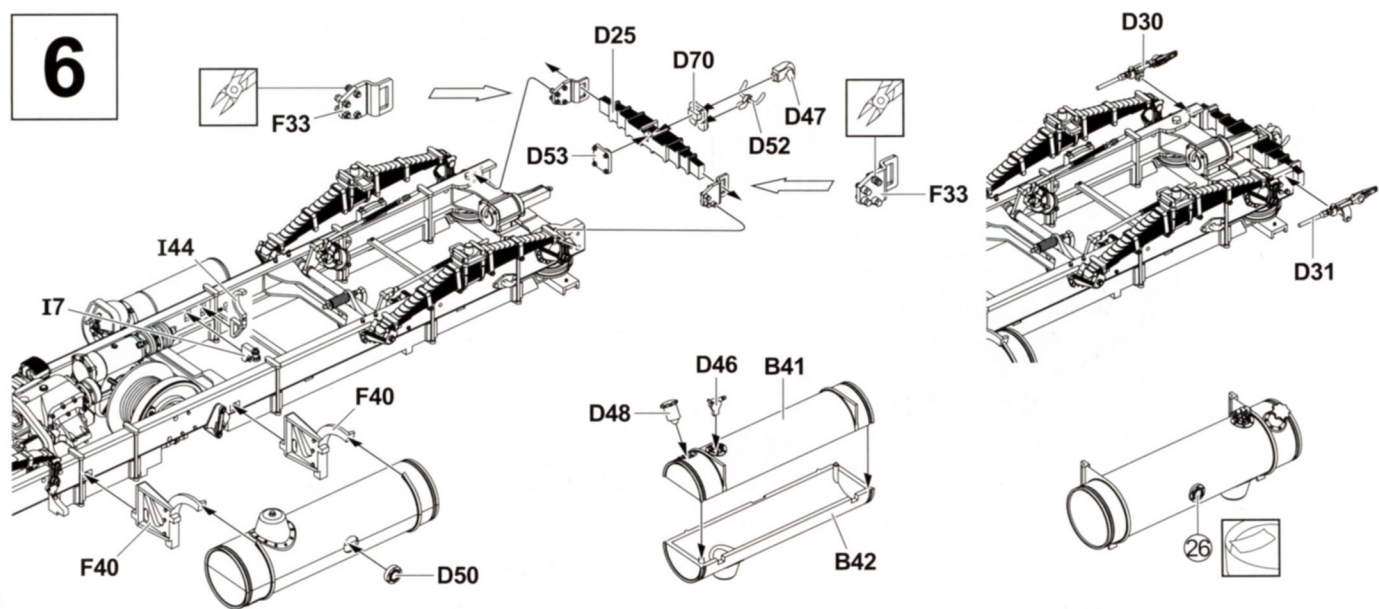
4



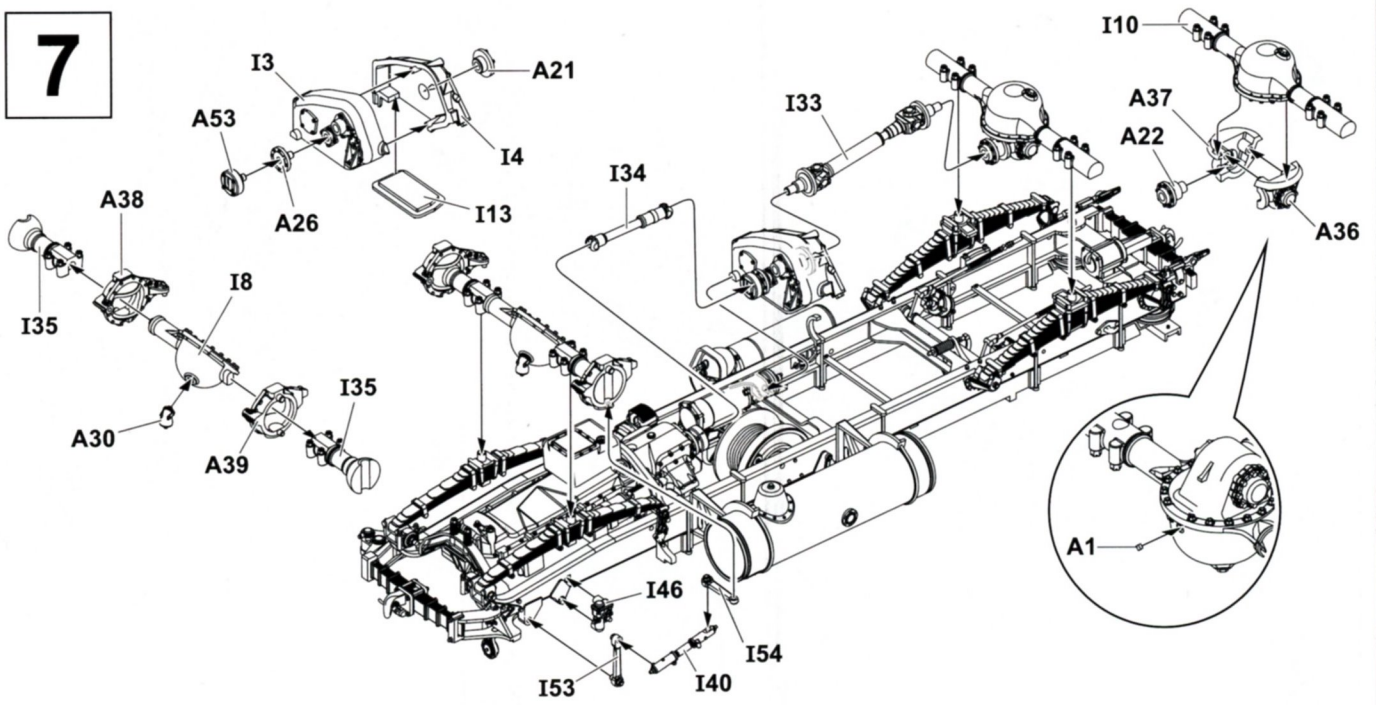
5



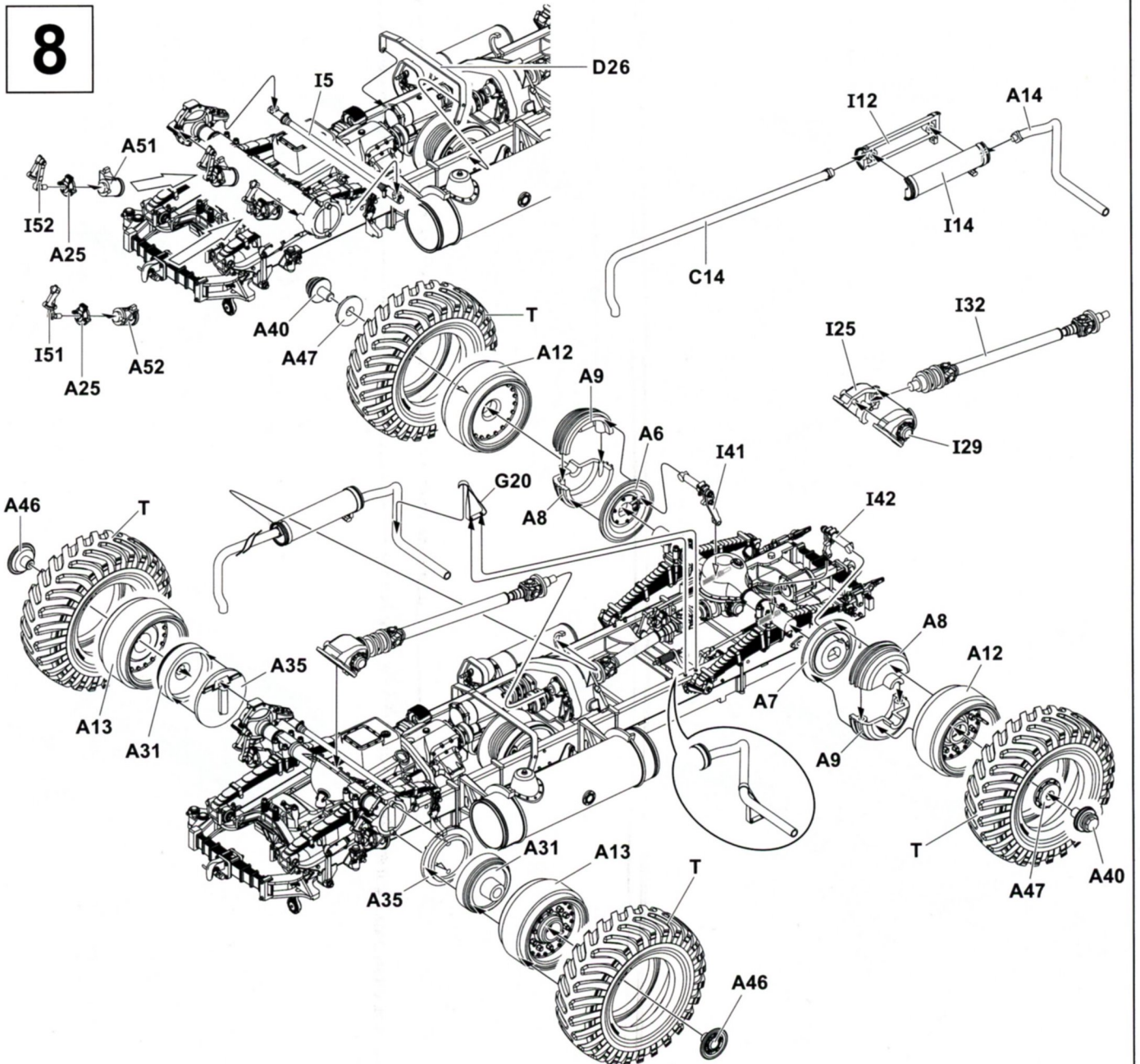
6



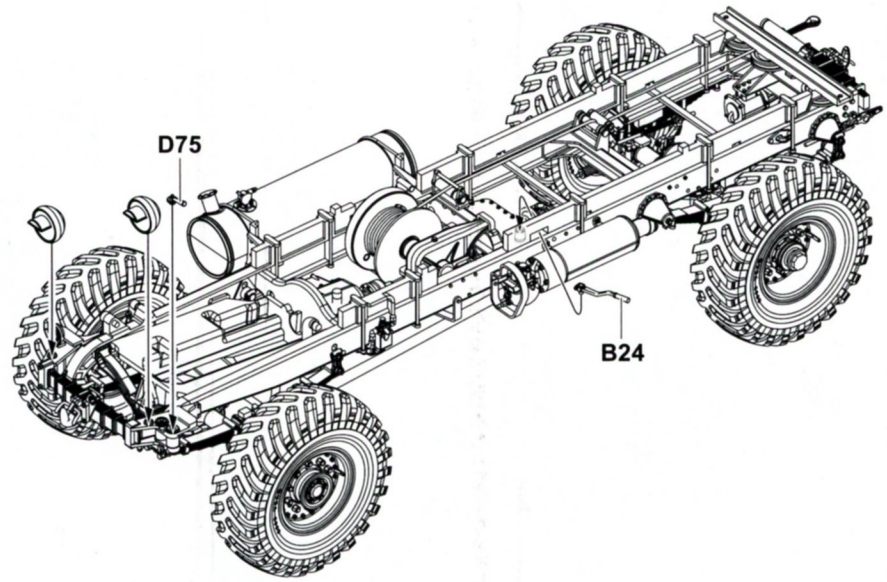
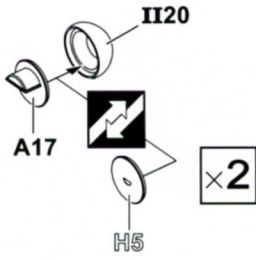
7



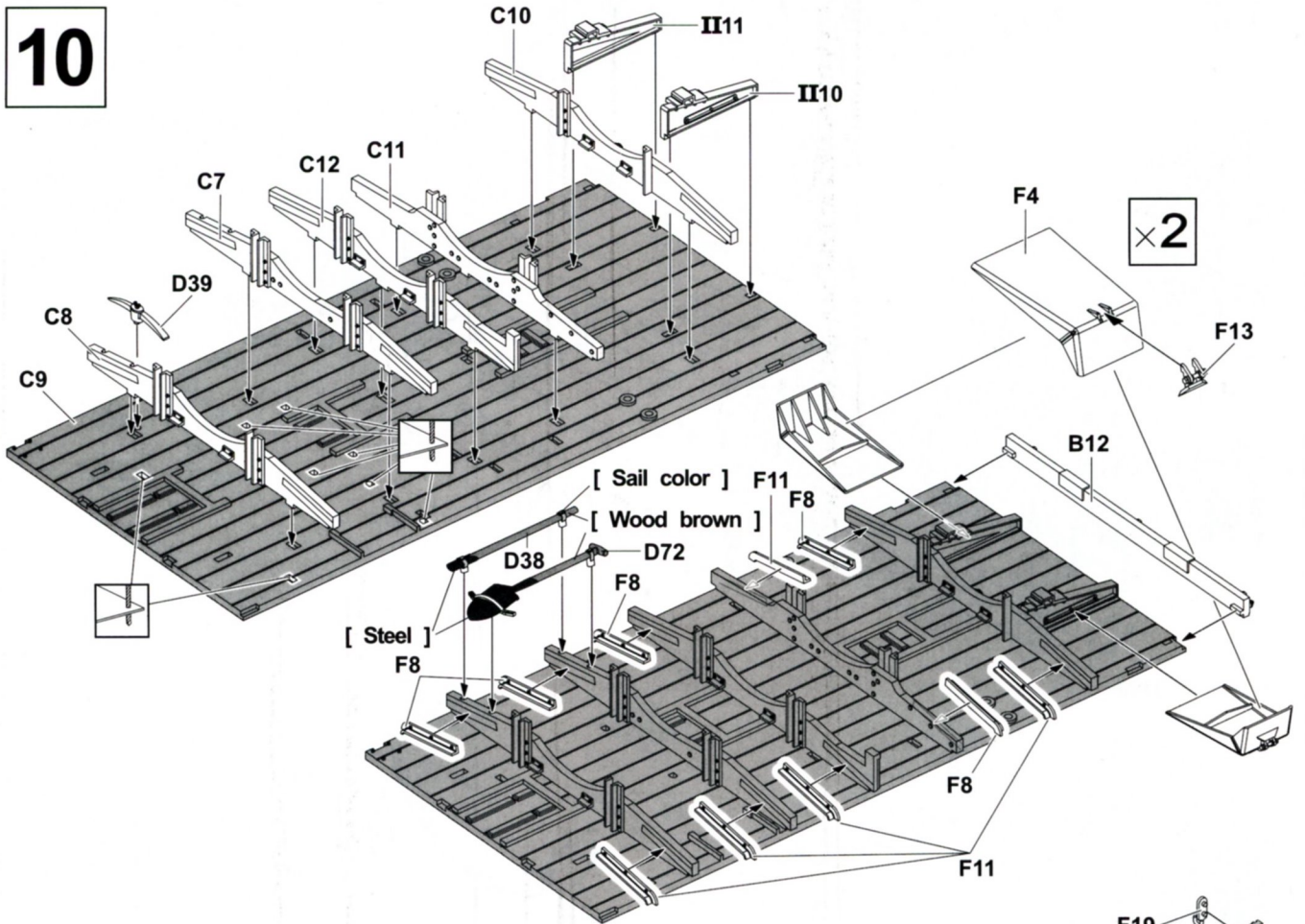
8



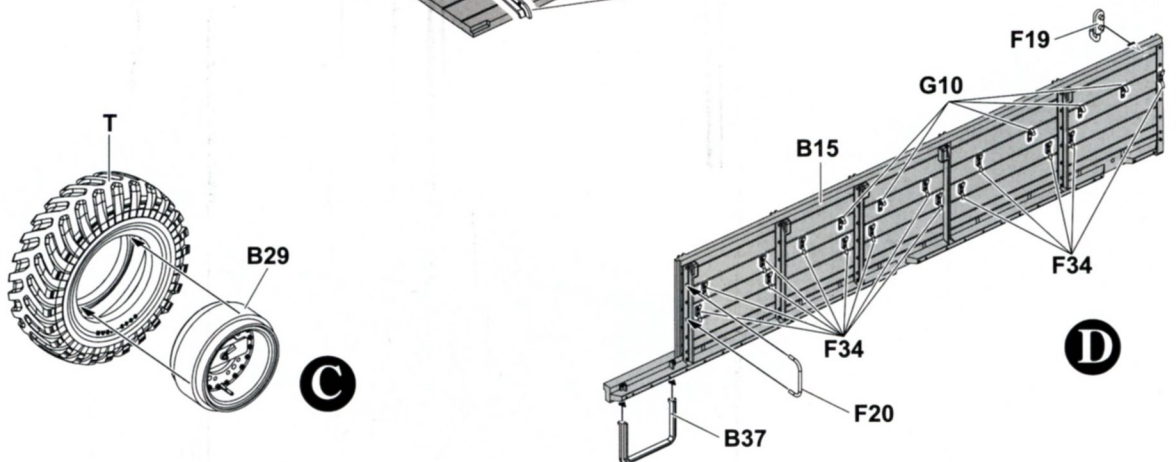
9



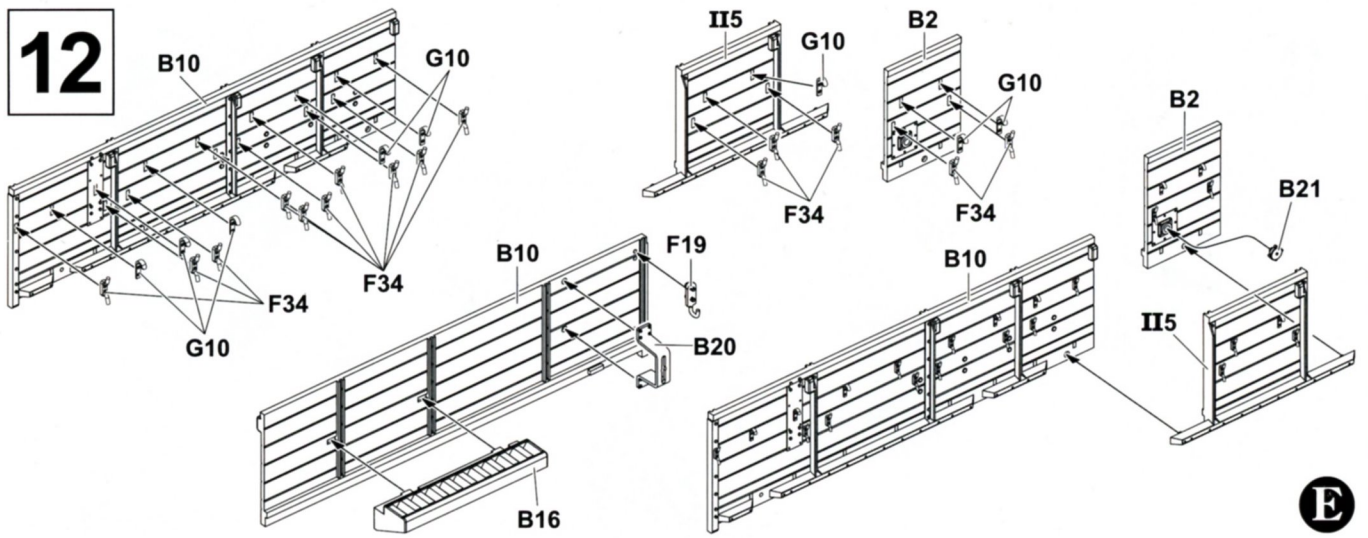
10



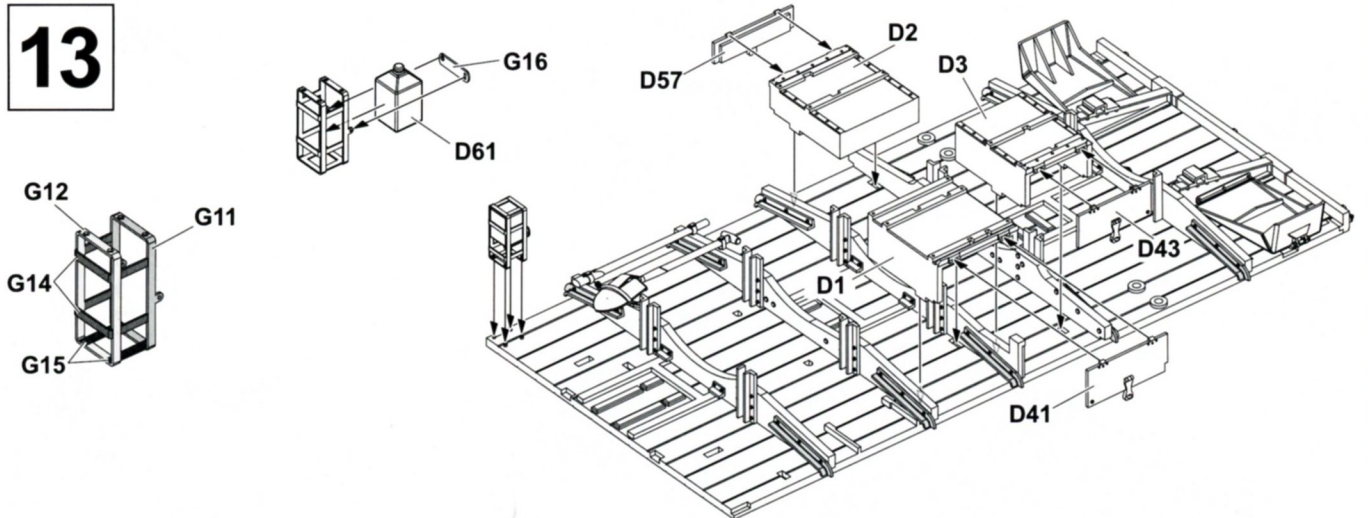
11



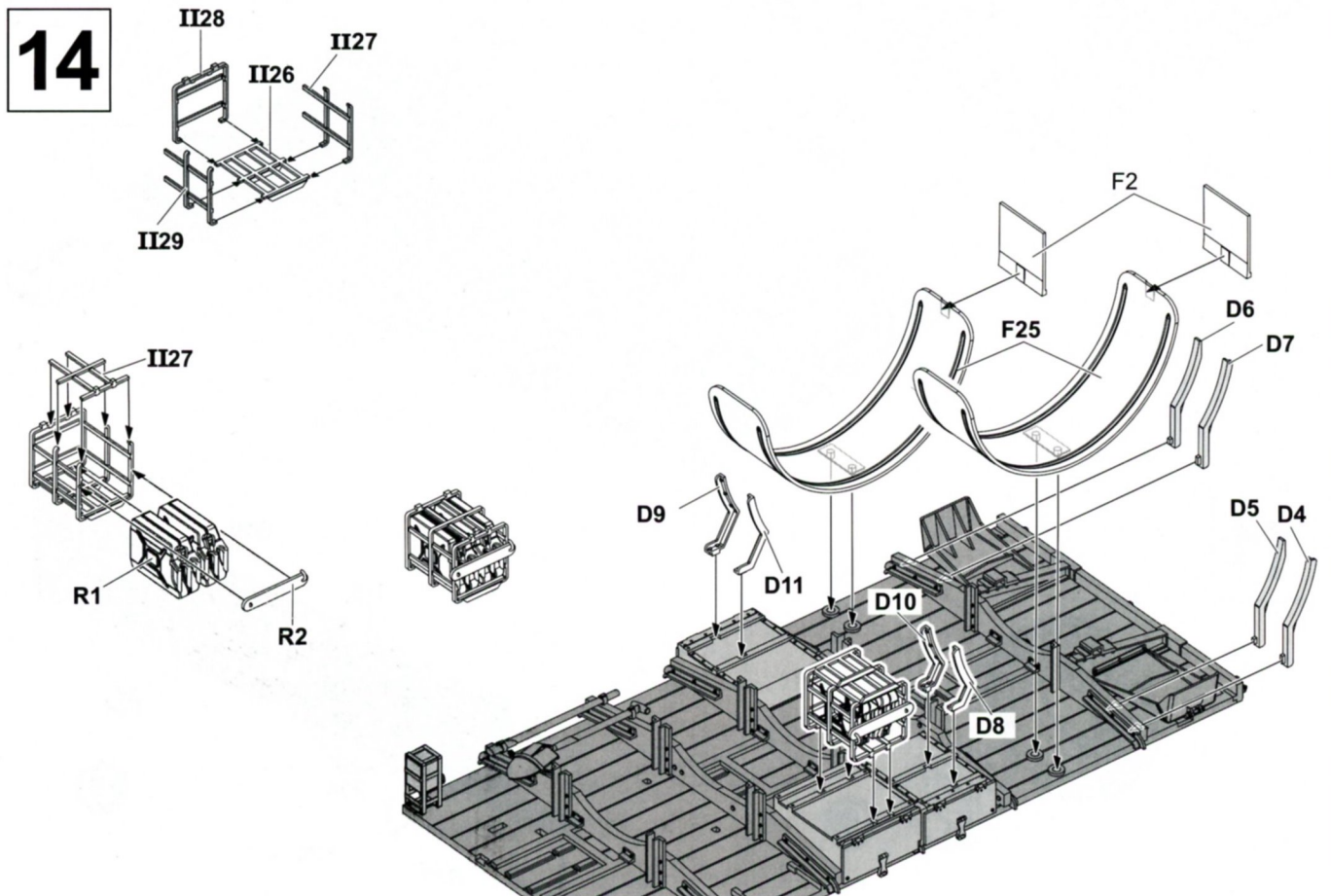
12



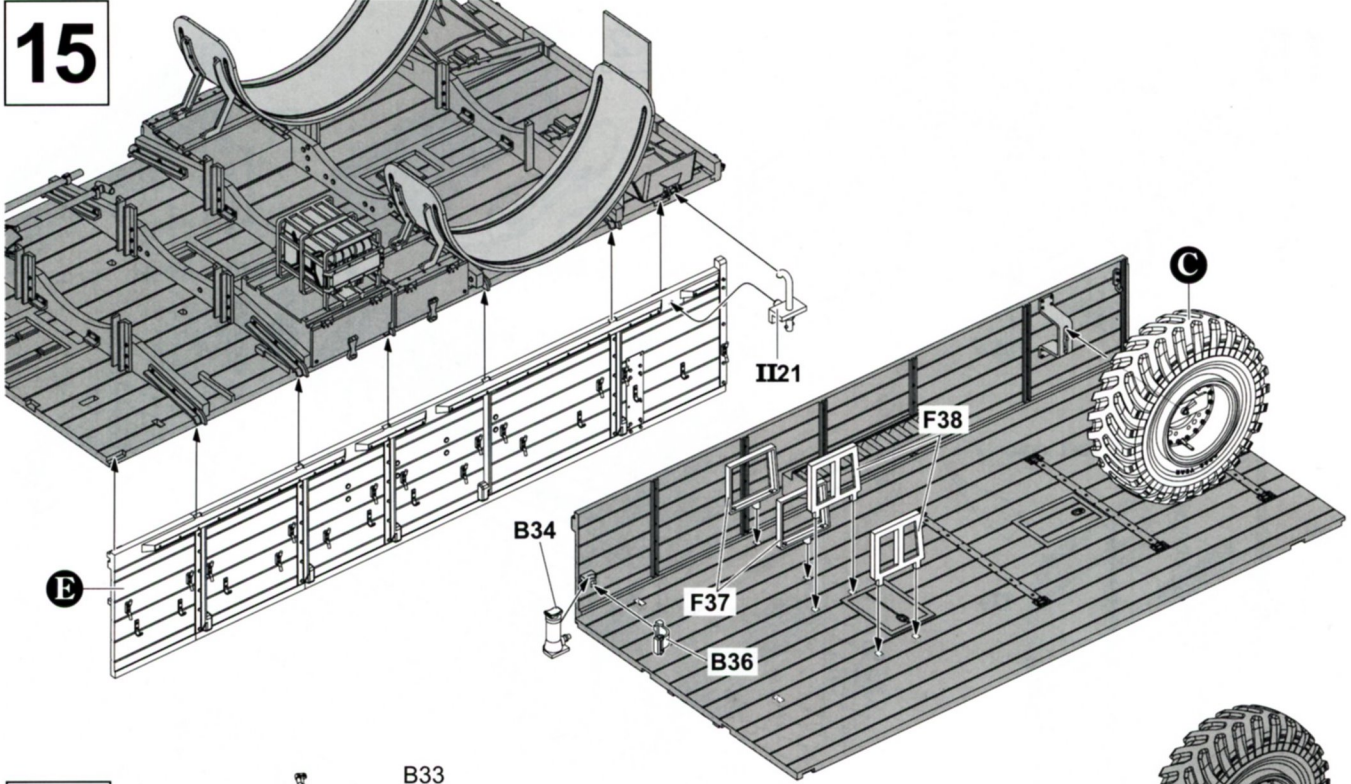
13



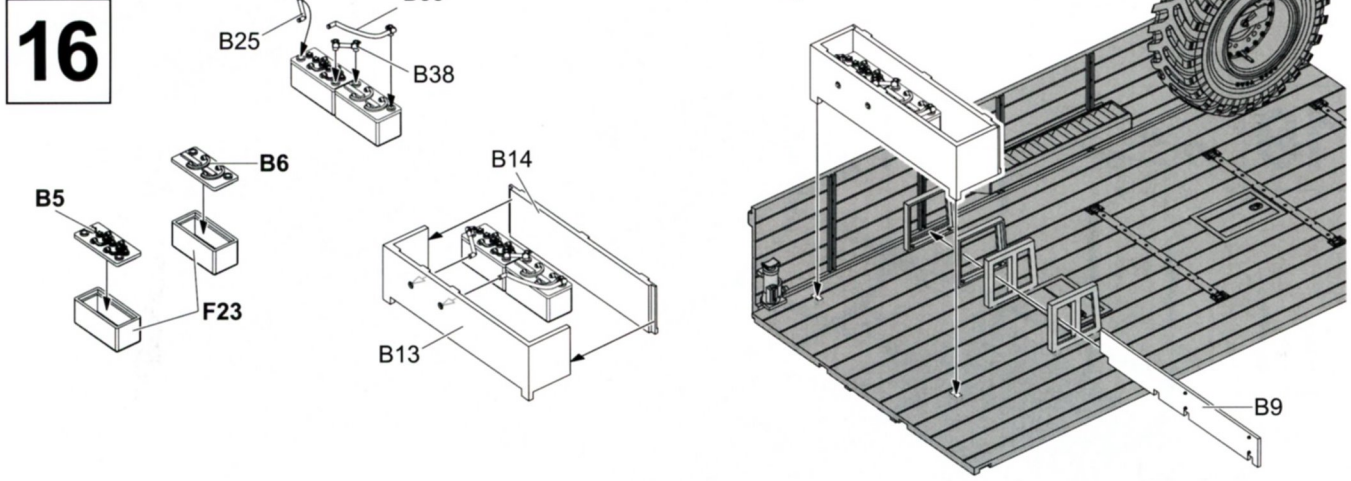
14



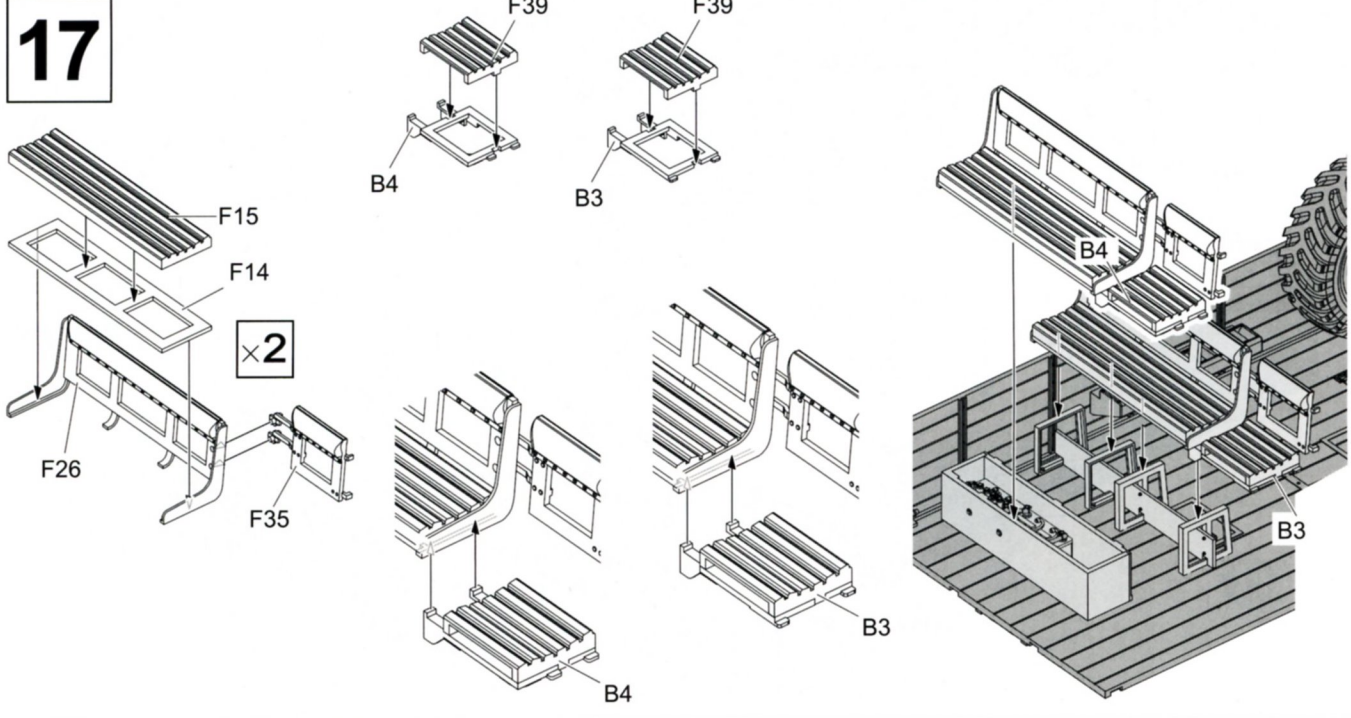
15



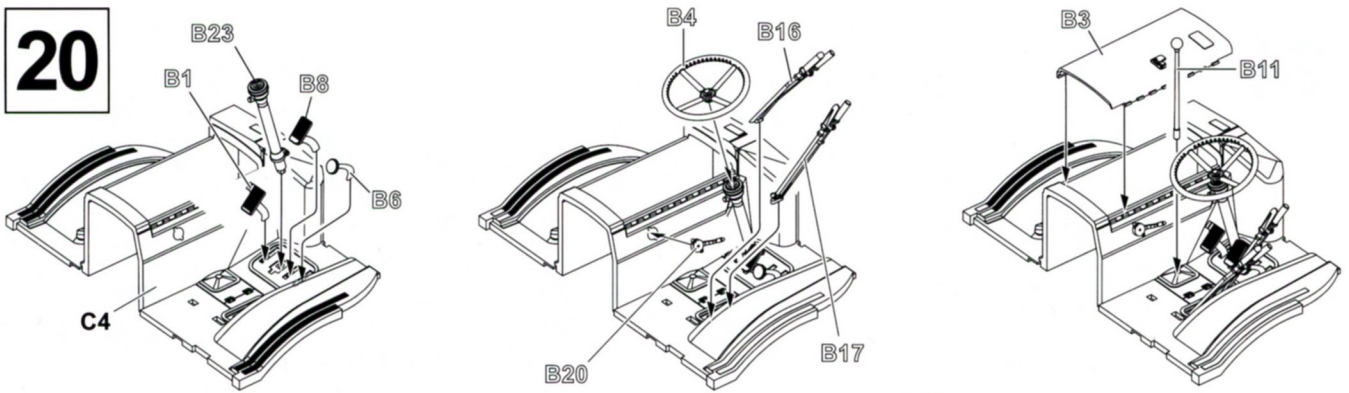
16



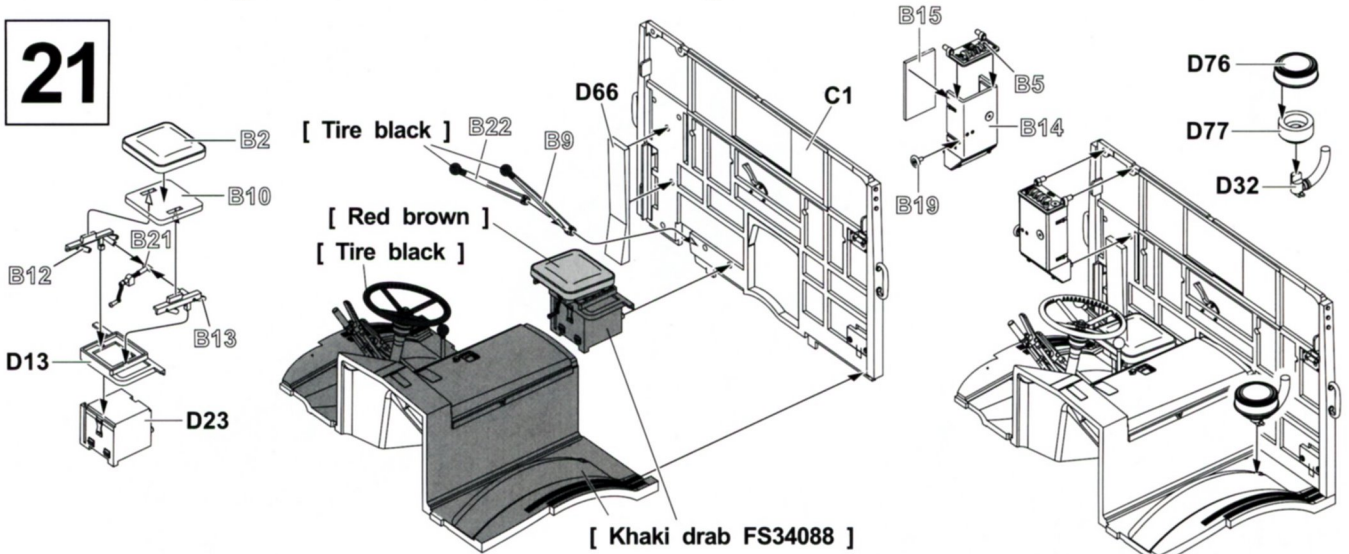
17



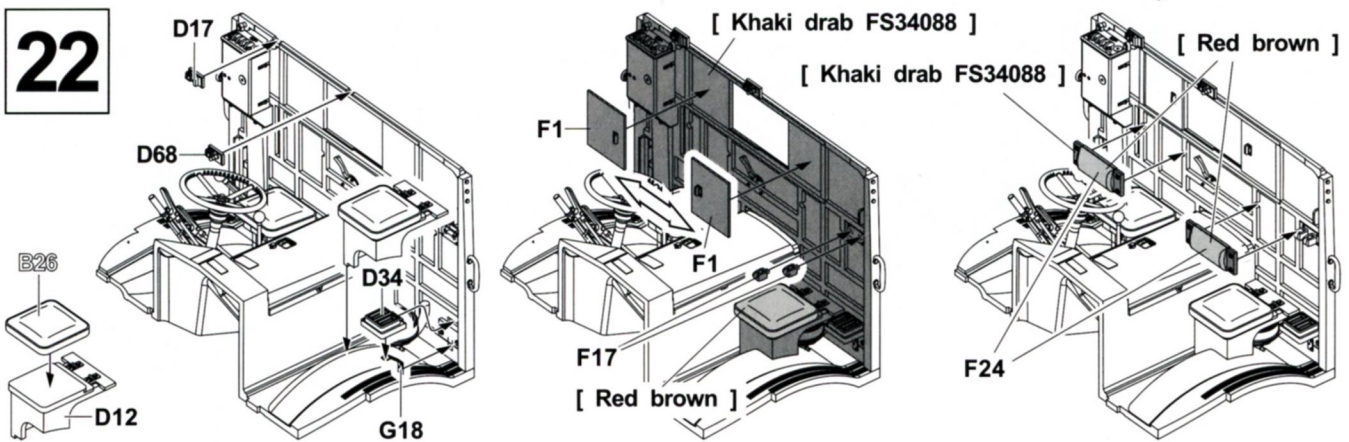
20



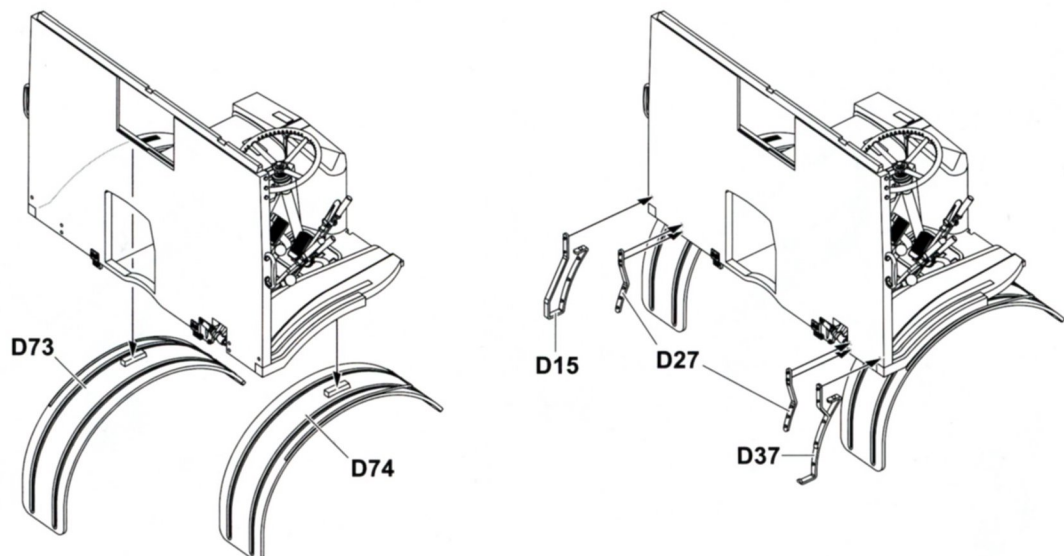
21



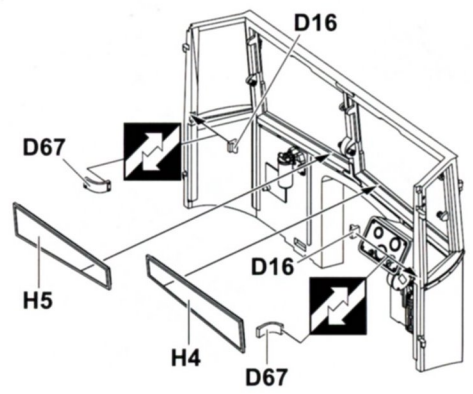
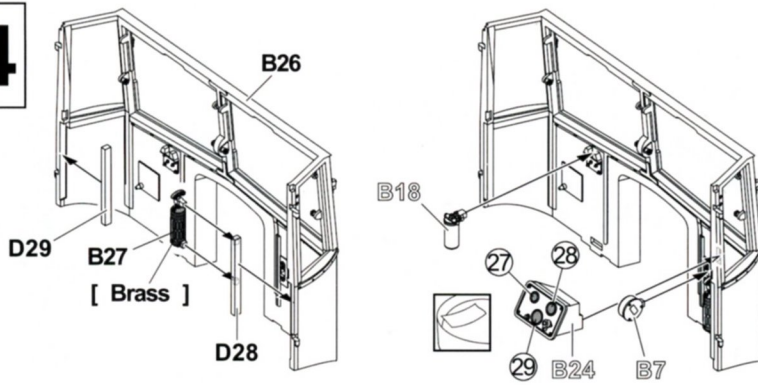
22



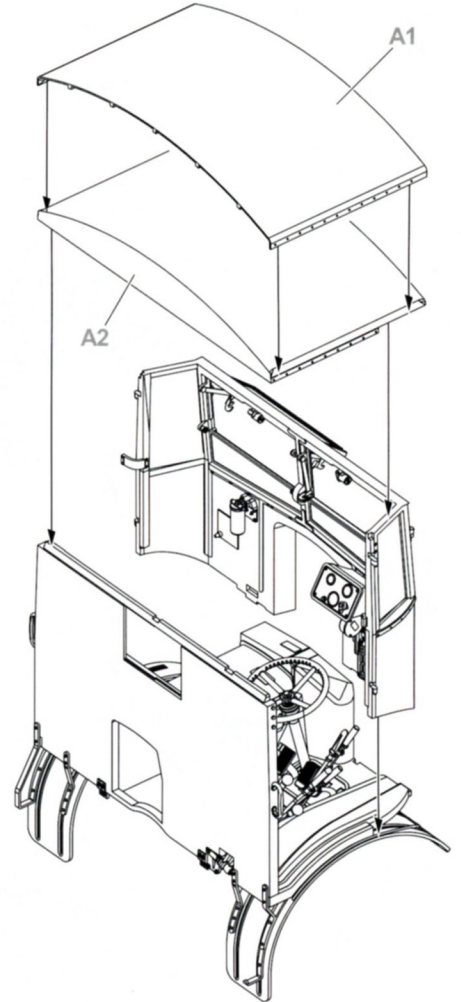
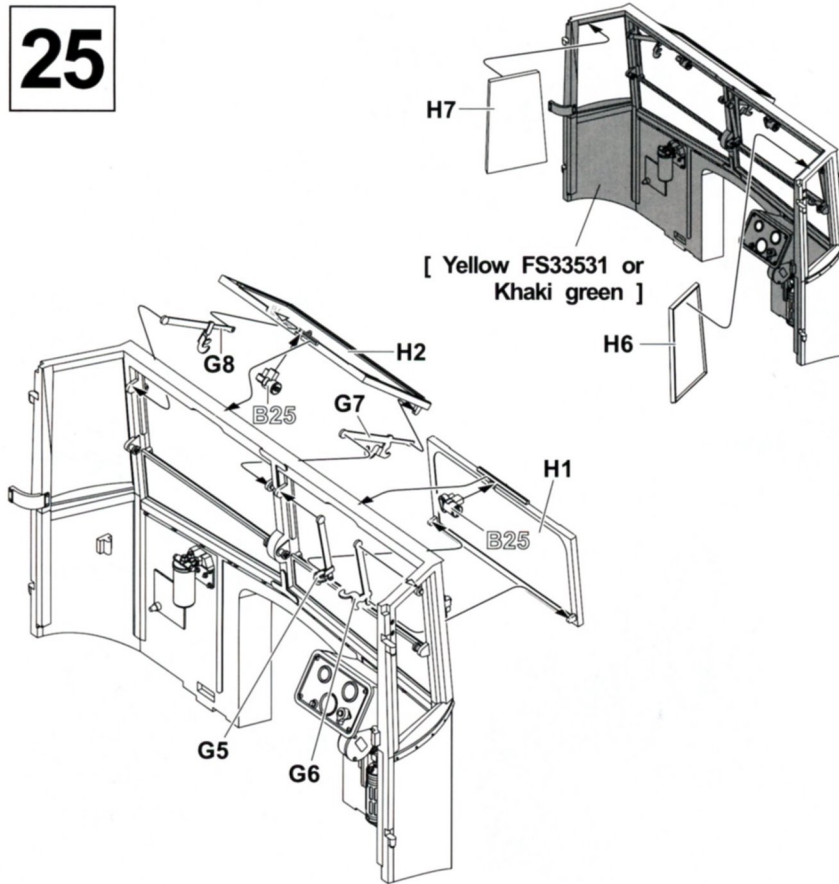
23



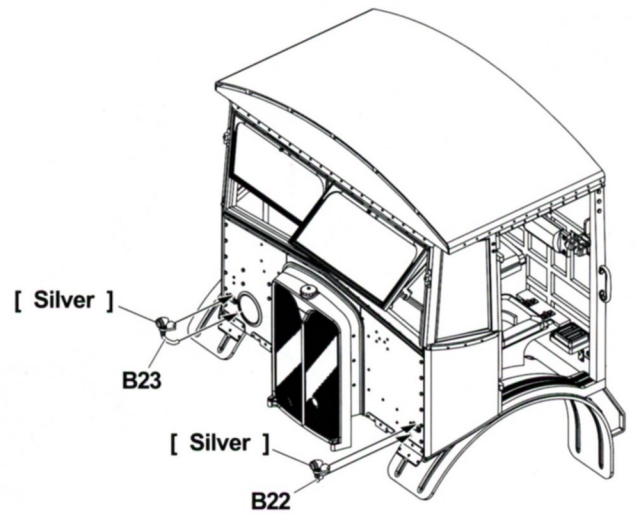
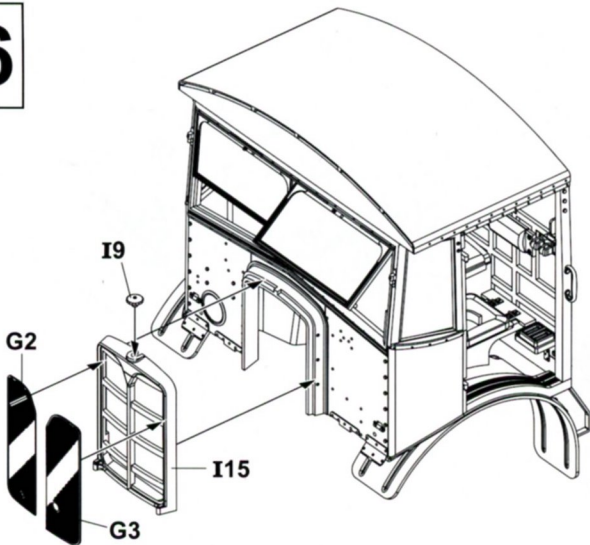
24



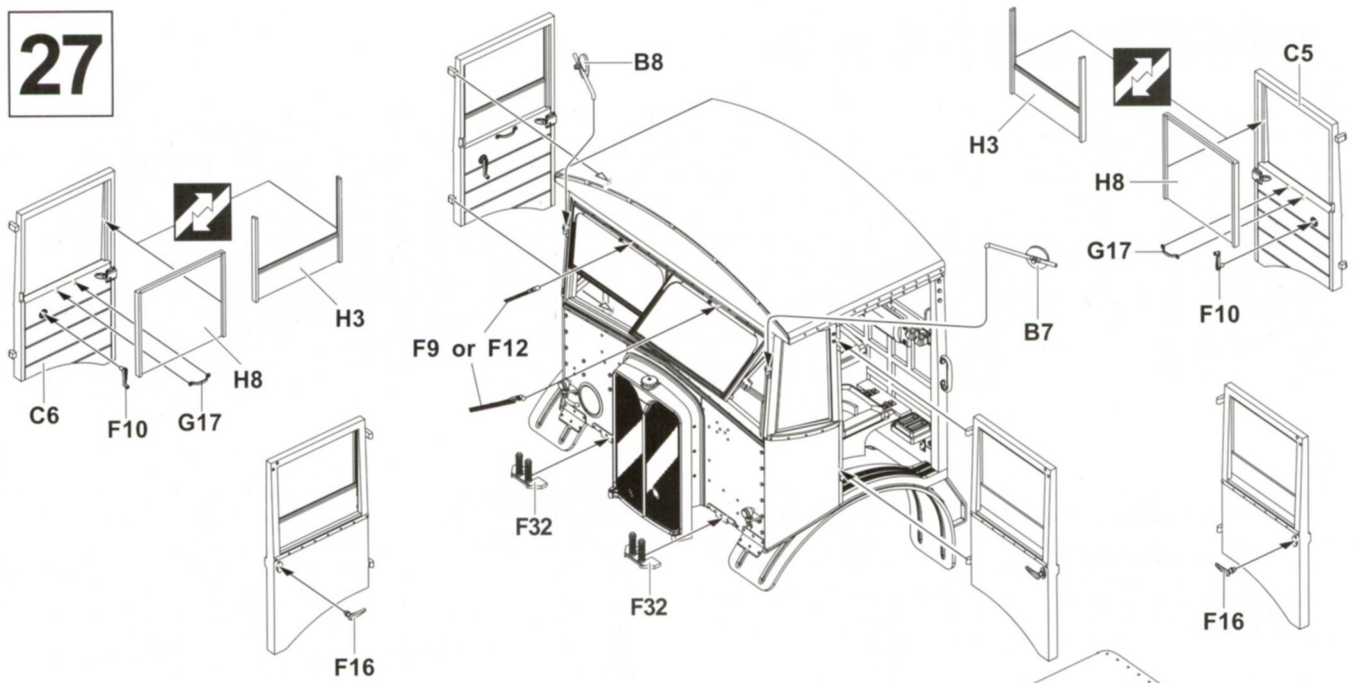
25



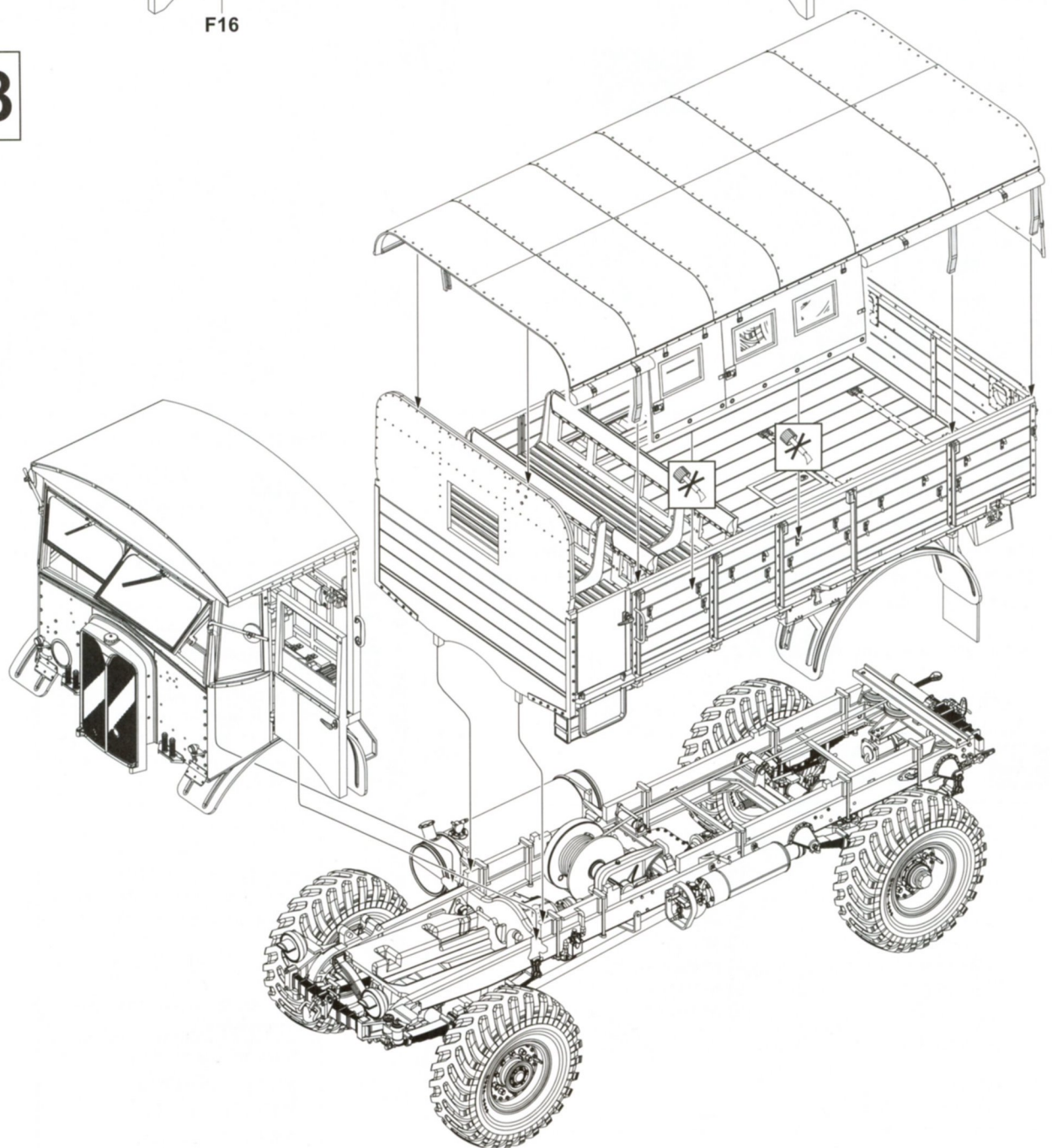
26



27



28

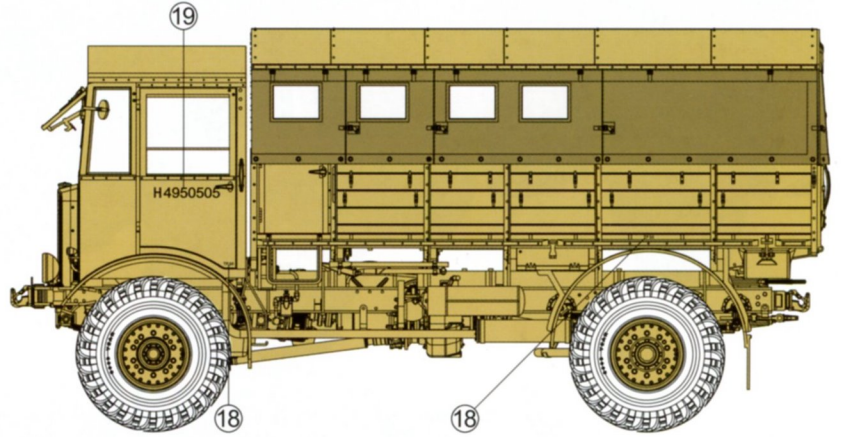
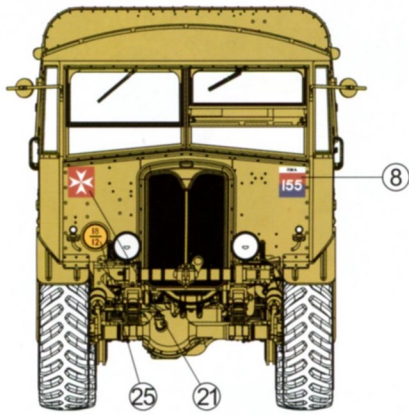
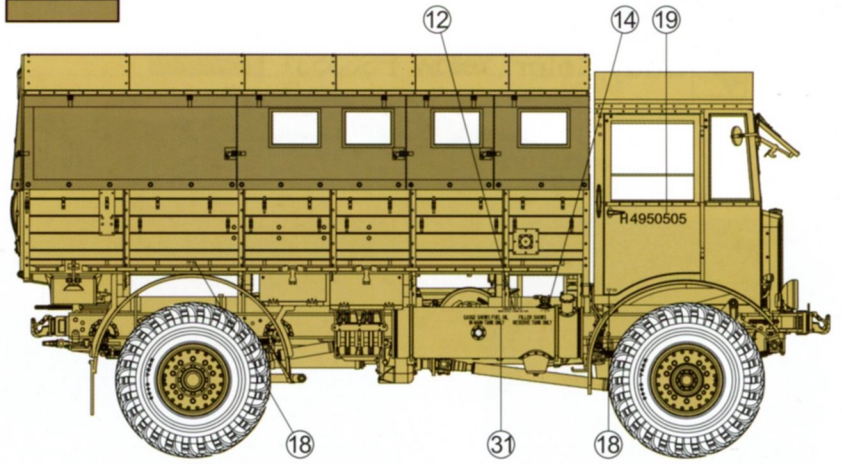
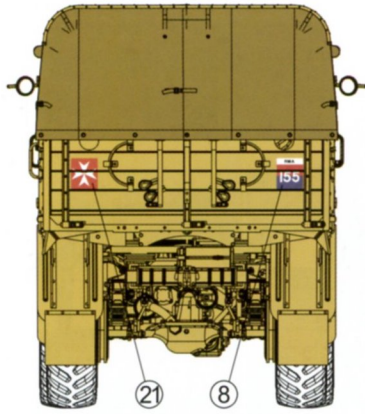


A

Body Color: Yellow FS33531



Sail color

**B**

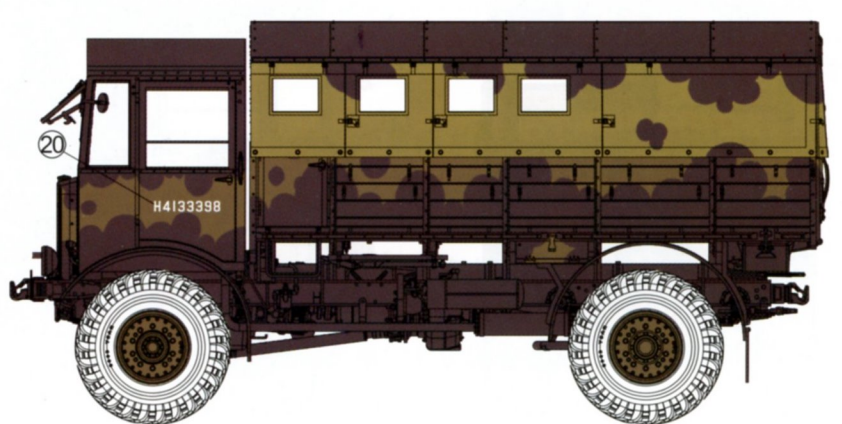
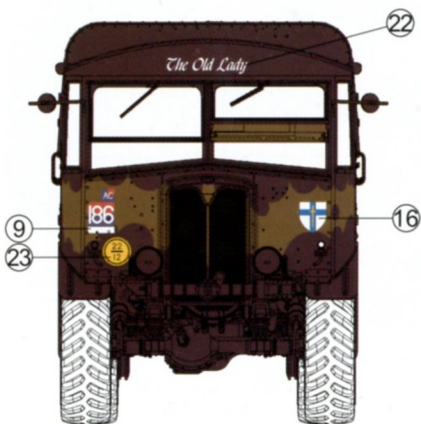
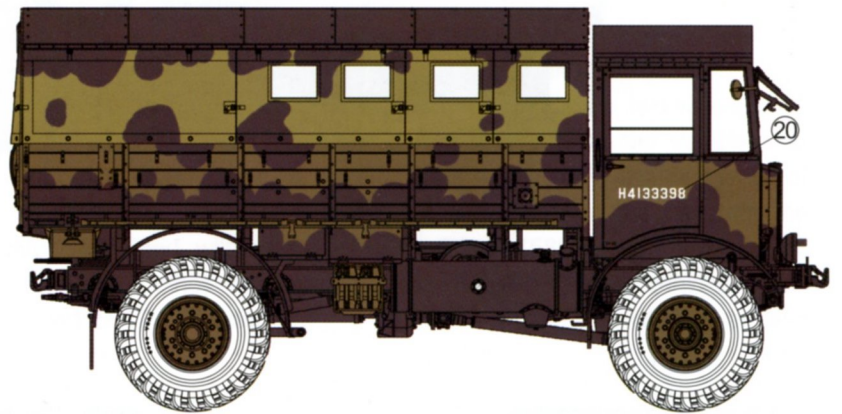
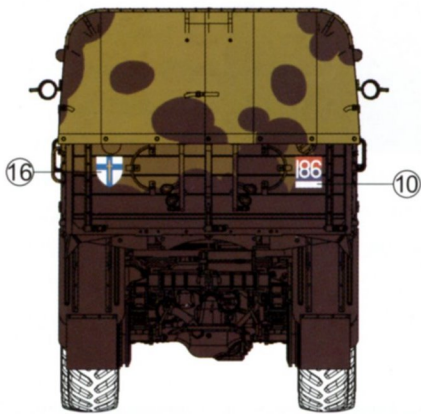
Body Color: Khaki green




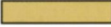

Flat black



Sail color



C Italy, 1943
義大利, 1943年

 Body Color: Yellow FS33531 
Sail color 
Flat black 