

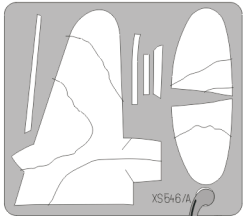
eduard
Express Mask

XS 546

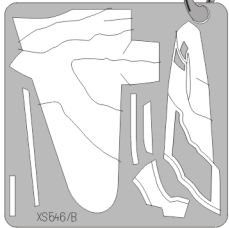
DH-98 Mosquito 2 Color Camo. scheme

The die-cut mask for accurate camo. scheme painting of the

1/72 KIT

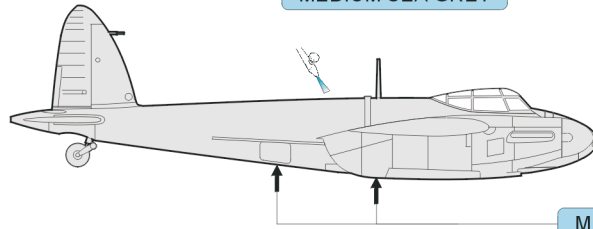


XS546/A



XS546/B

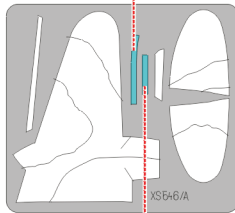
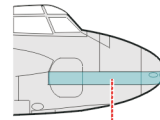
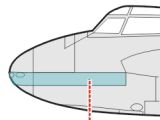
1.)



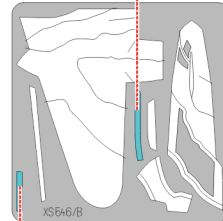
MEDIUM SEA GREY

MEDIUM SEA GREY

2.)



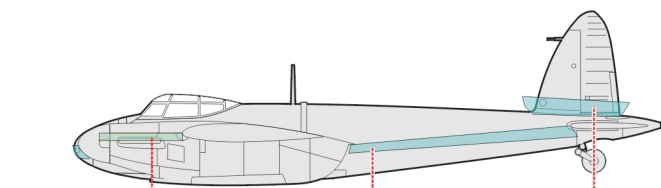
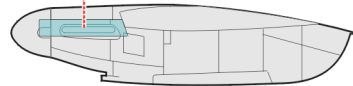
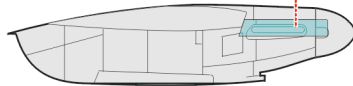
XS546/A



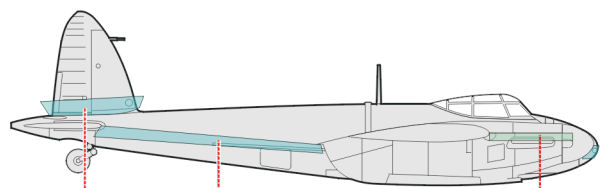
XS546/B

GREEN - GRAY ONLY

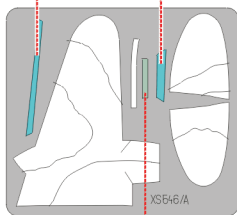
INNER SIDE



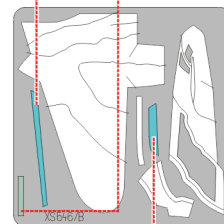
GRAY - GREEN ONLY



GRAY - GREEN ONLY



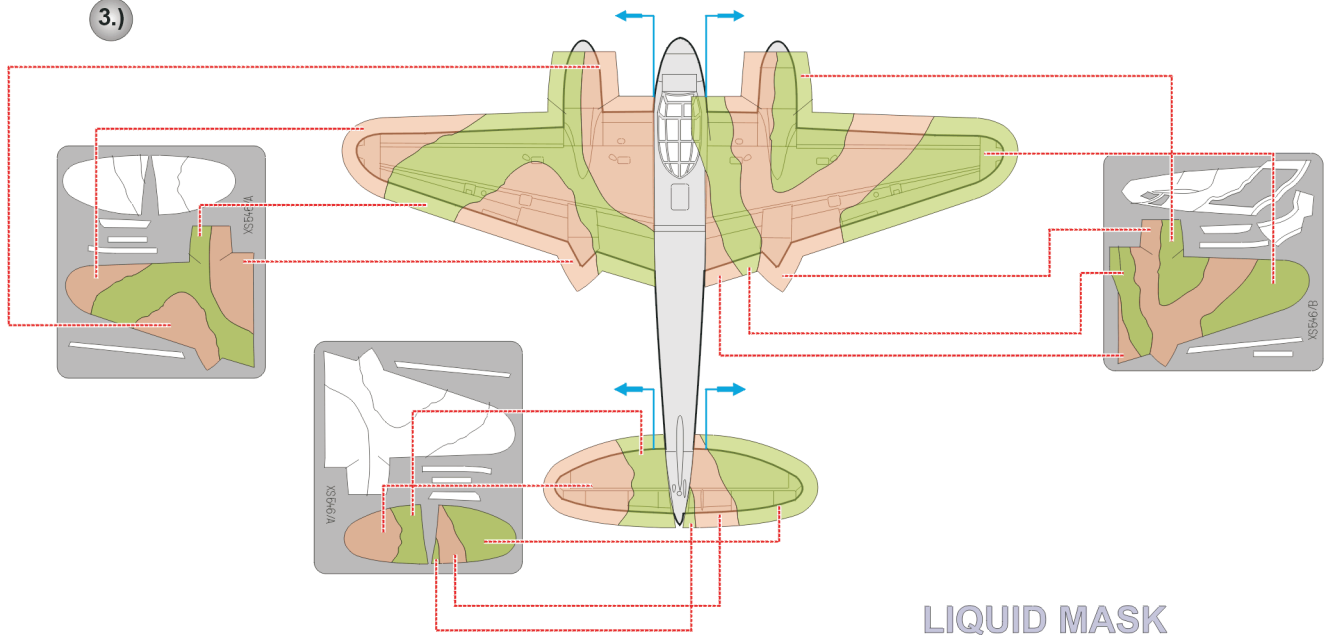
XS546/A



XS546/B

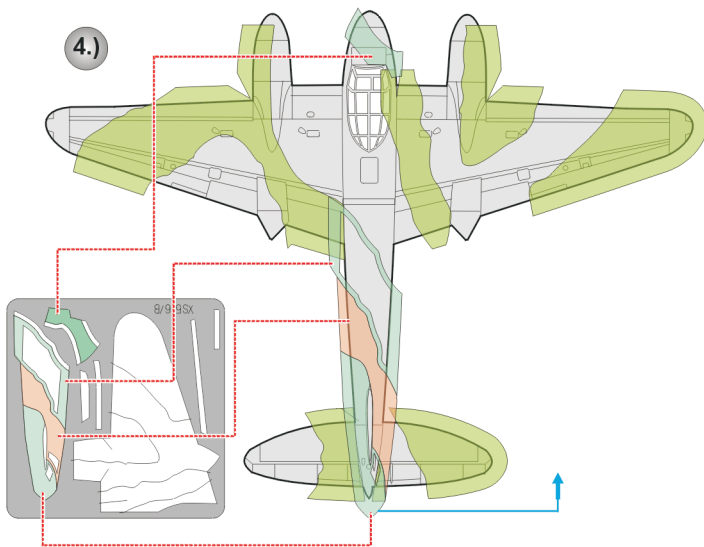
GREEN - GRAY SCHEME A

3.)

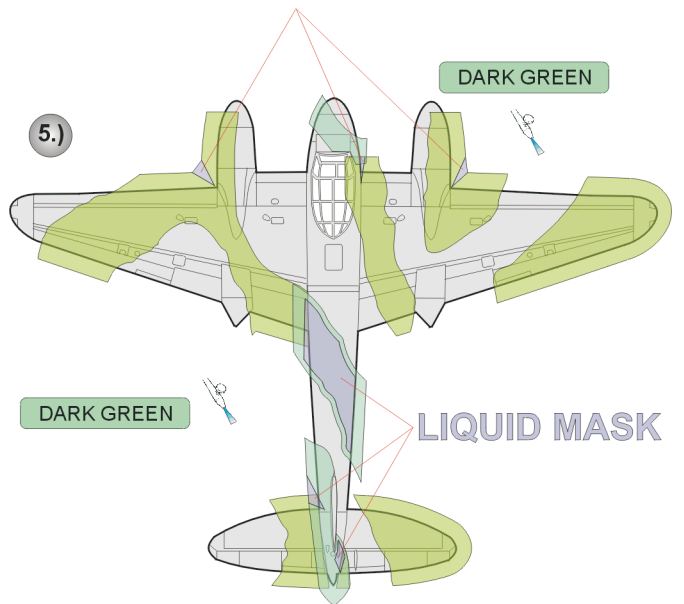


LIQUID MASK

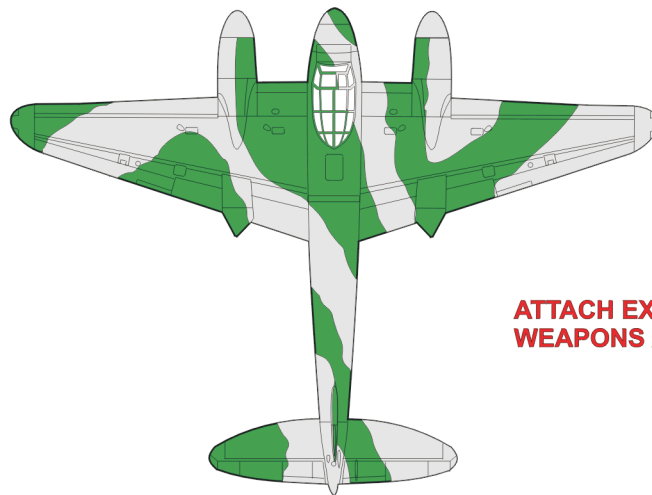
4.)



5.)



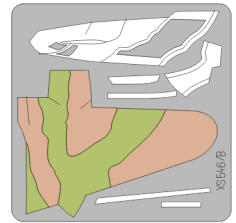
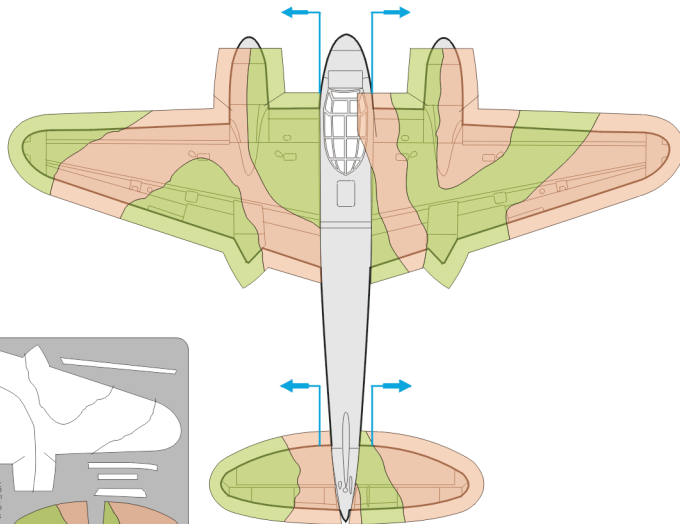
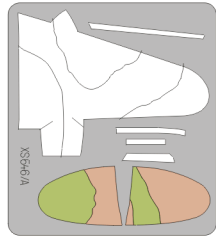
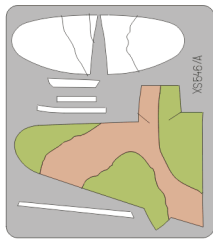
6.)



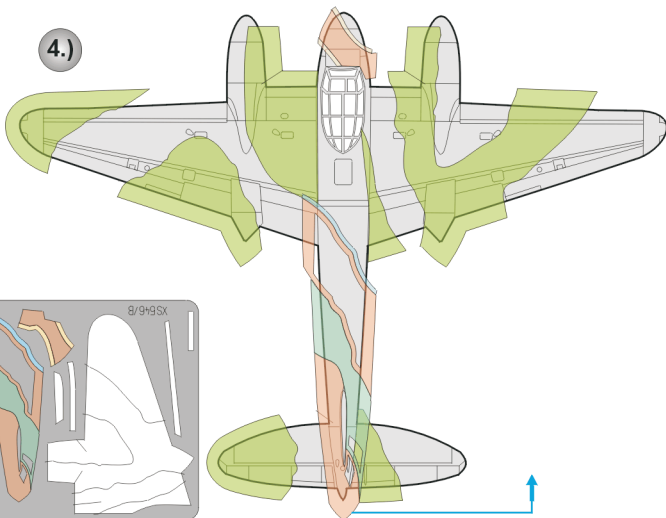
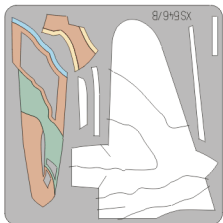
ATTACH EXHAUST COVERS AND NOSE WEAPONS AFTER PAINTING !!

GRAY - GREEN SCHEMA B

3.)



4.)

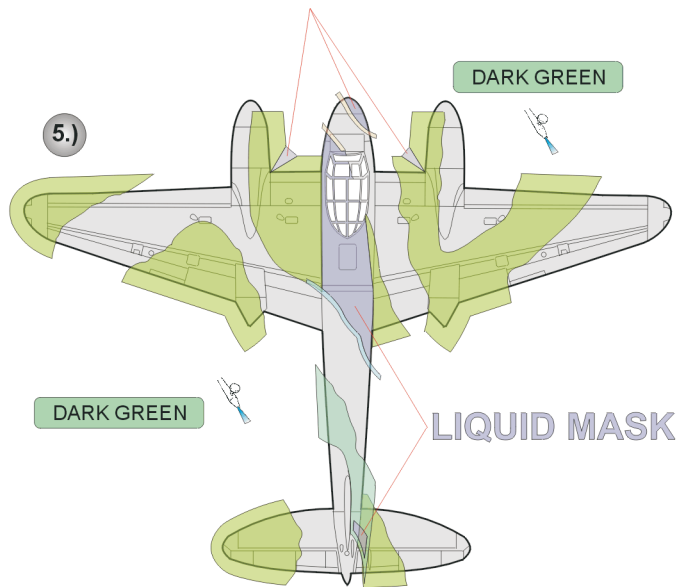


5.)

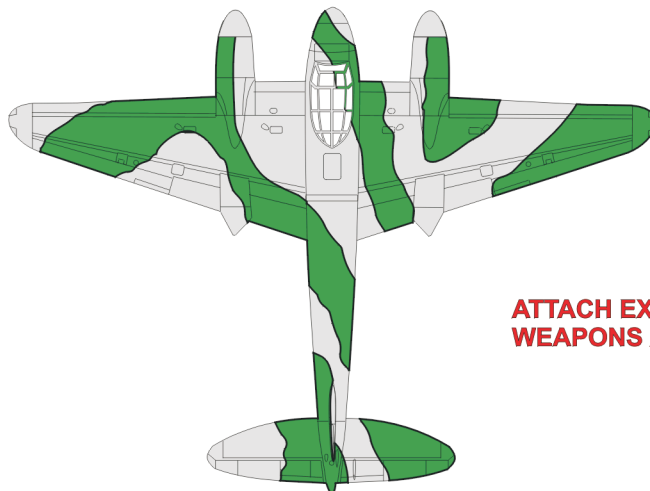
DARK GREEN

DARK GREEN

LIQUID MASK



6.)



ATTACH EXHAUST COVERS AND NOSE WEAPONS AFTER PAINTING !!

REFERENCES: SQUADRON SIGNAL PUBLICATION 5515, WALK AROUND MOSQUITO
SAM PUBLICATION ,MODELLERS DATAFILE 1, THE DE HAVILLAND MOSQUITO