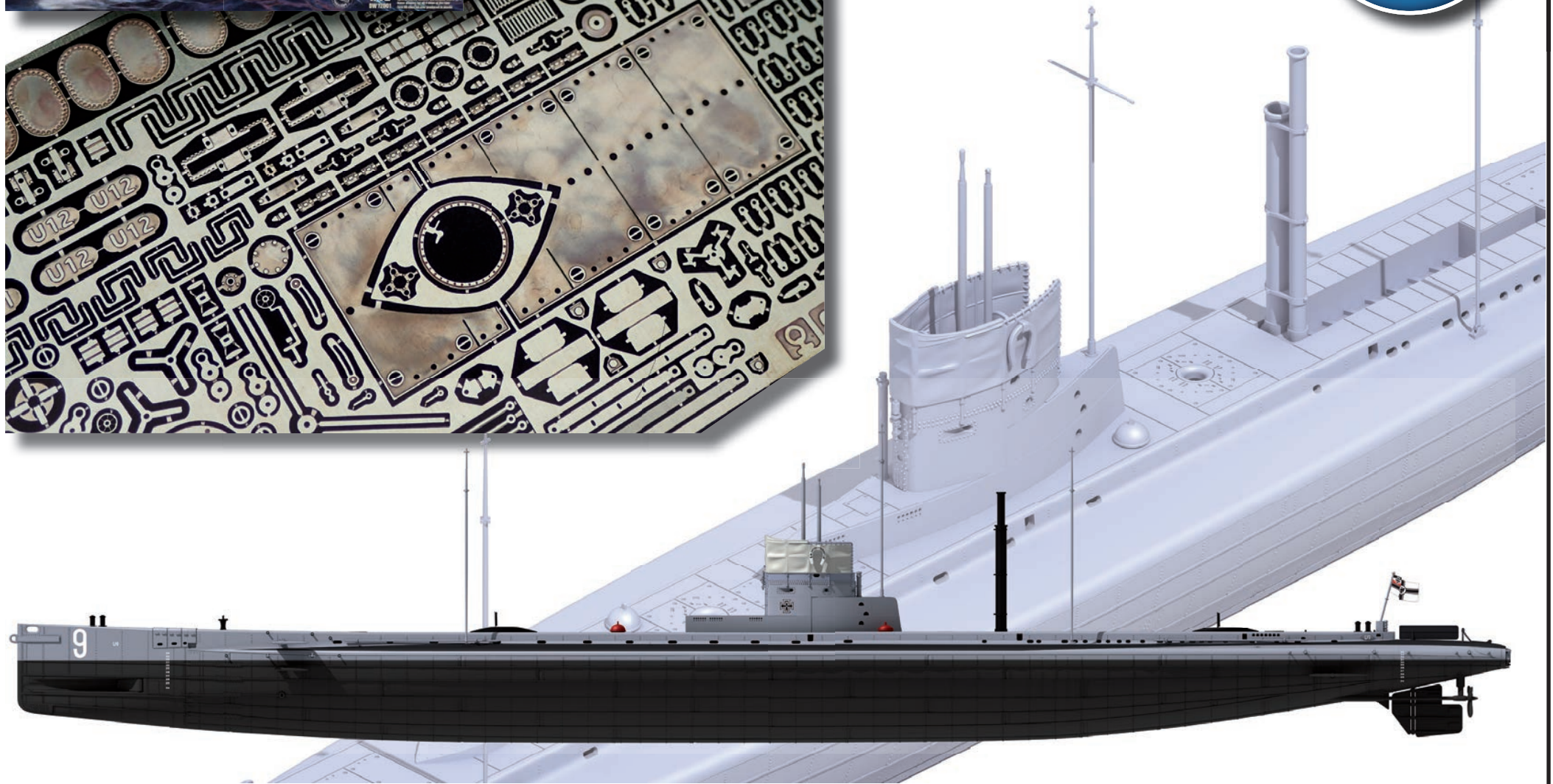
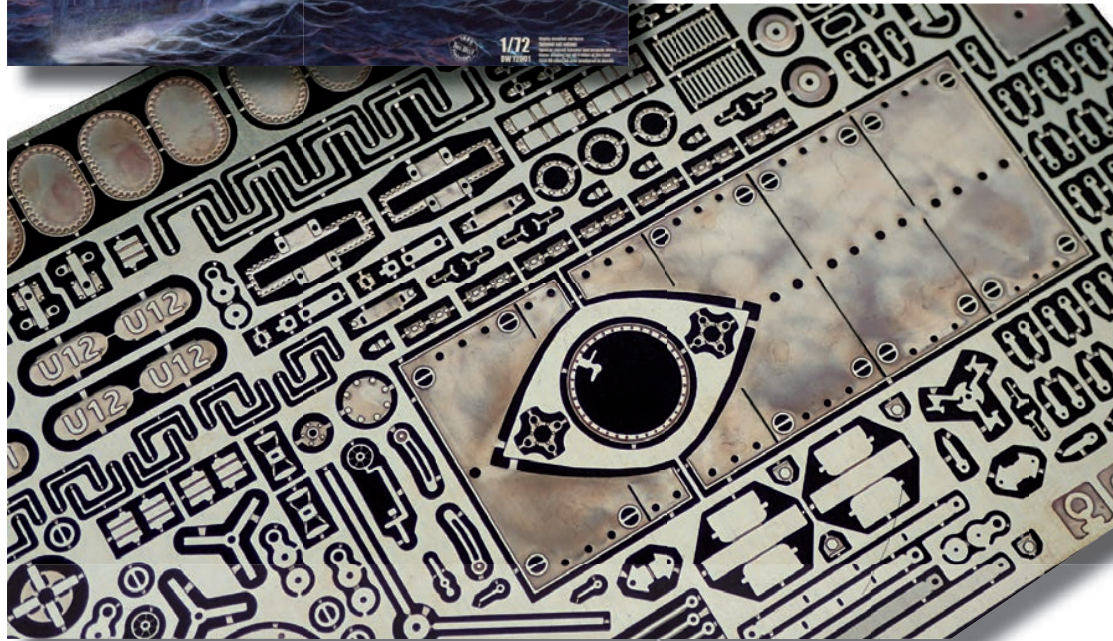


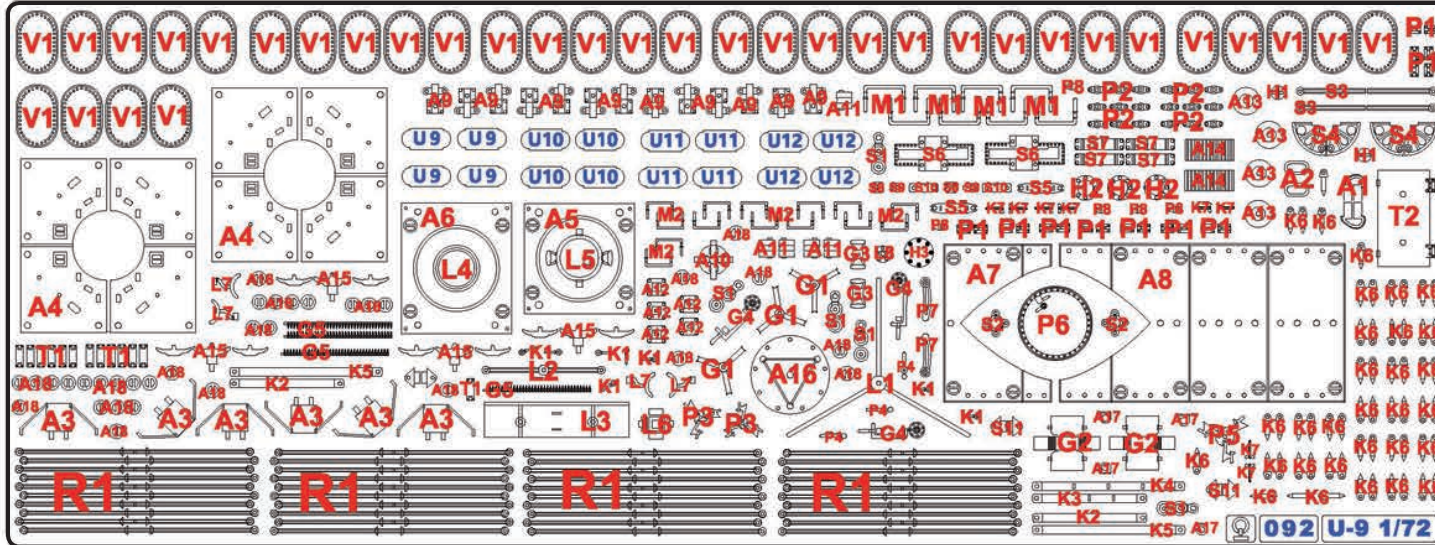
# INSTRUCTIONS PHOTO ETCHED DETAILS FOR DAS WERK DW72001 SM U-9 1/72



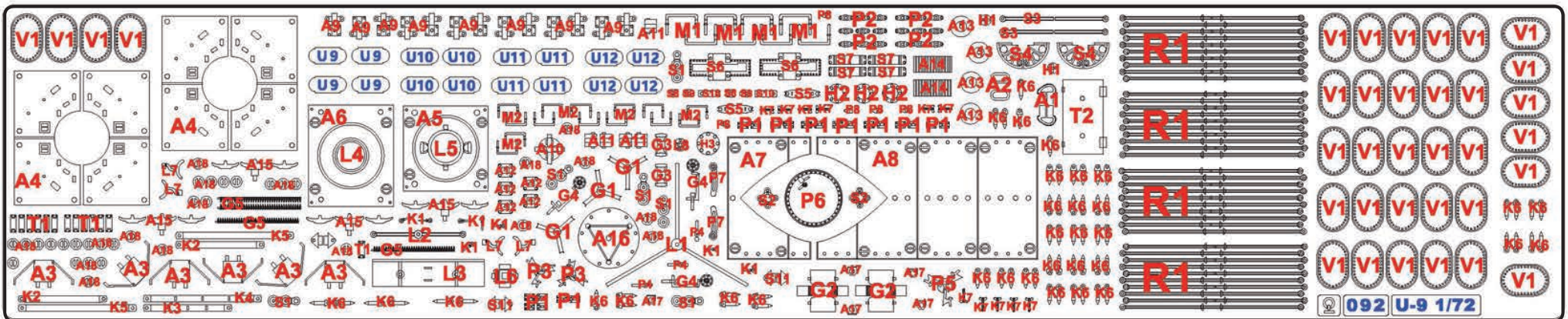
# Description of patrs PE

(Both sets are the same only they are arranged differently)

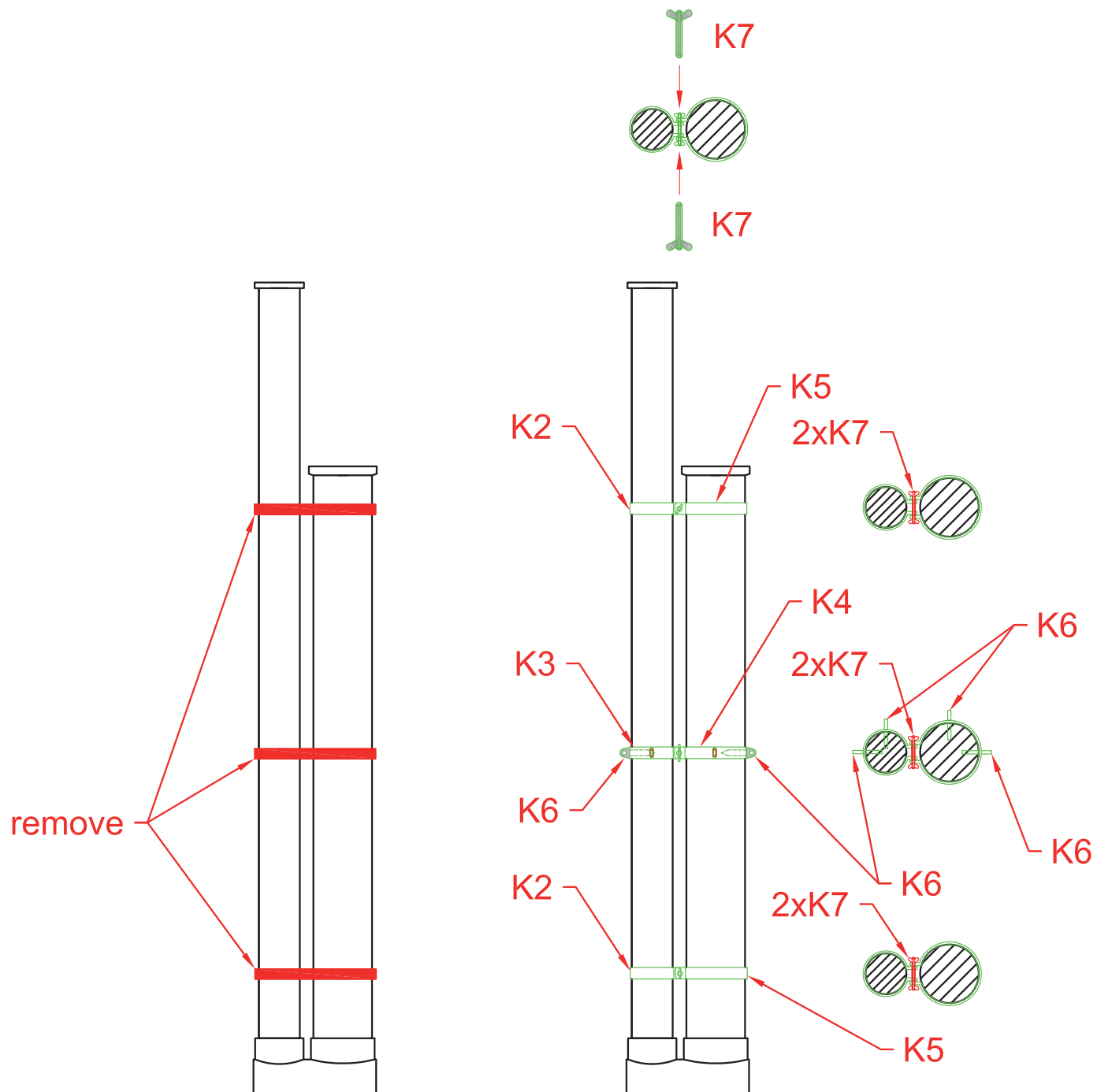
## PE Set variant A



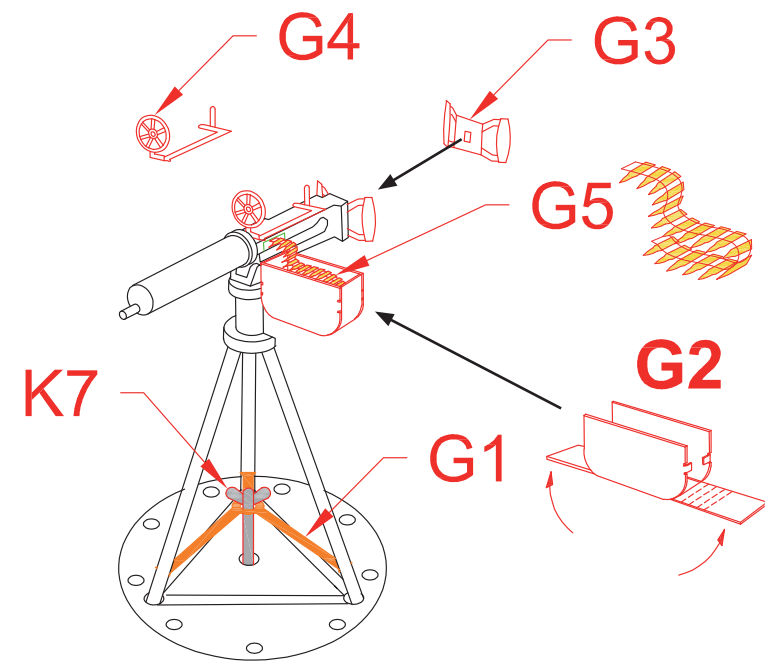
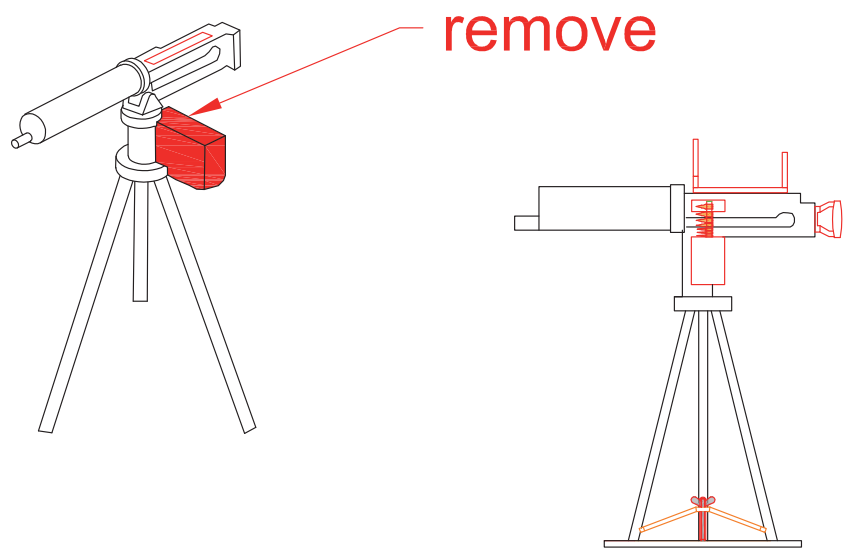
## PE Set variant B



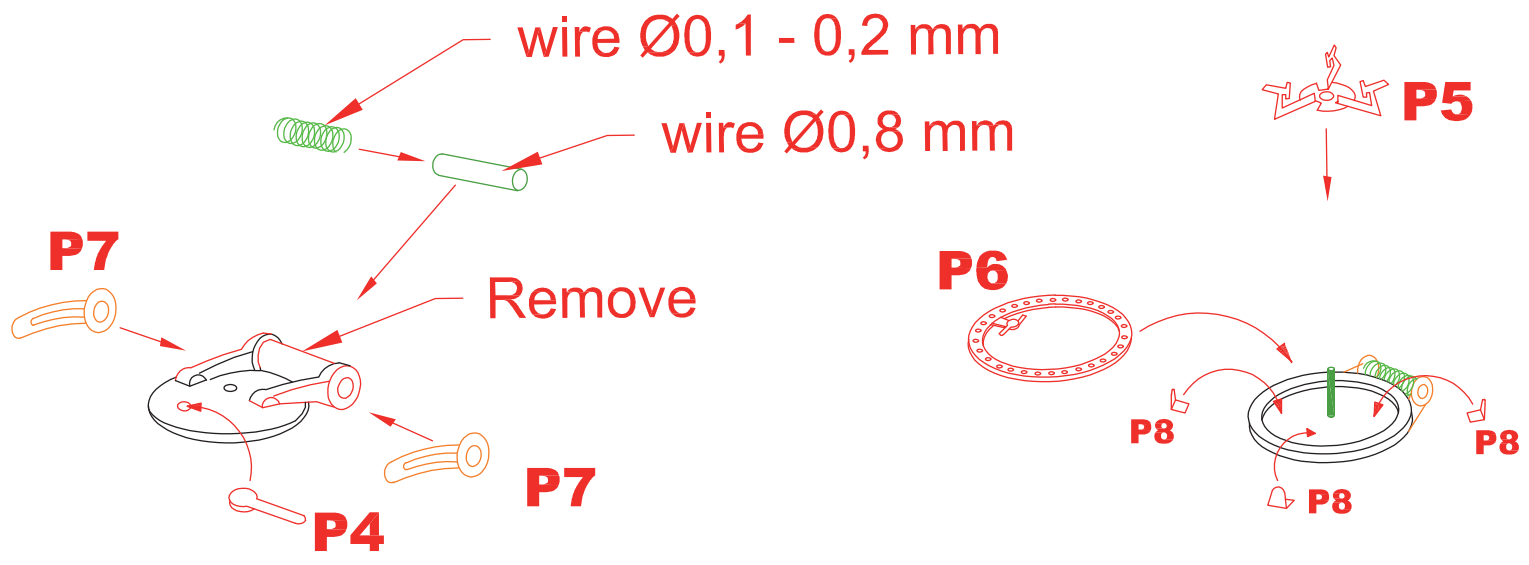
# Chimney



## Machine gun



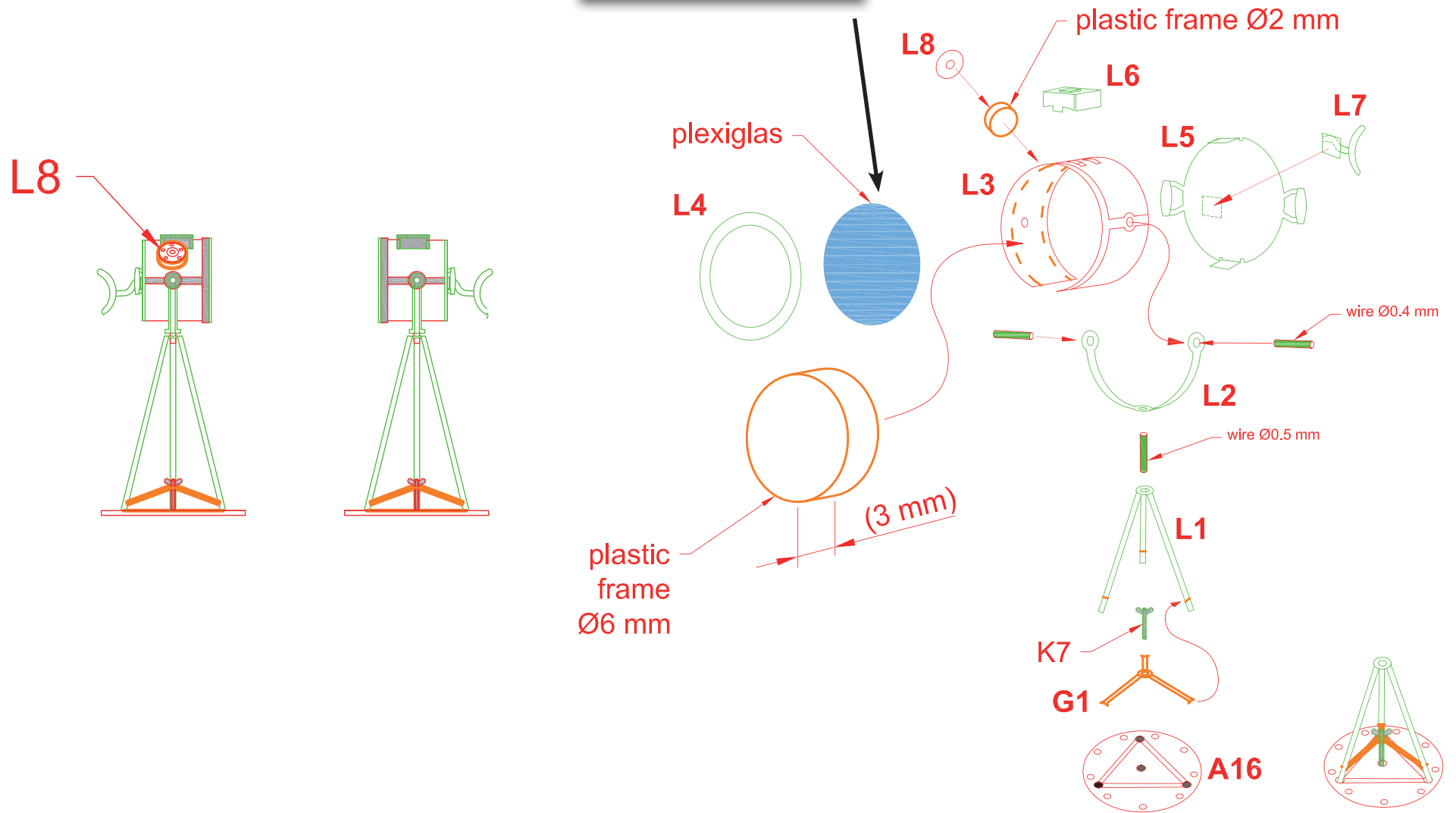
## Tower hatch



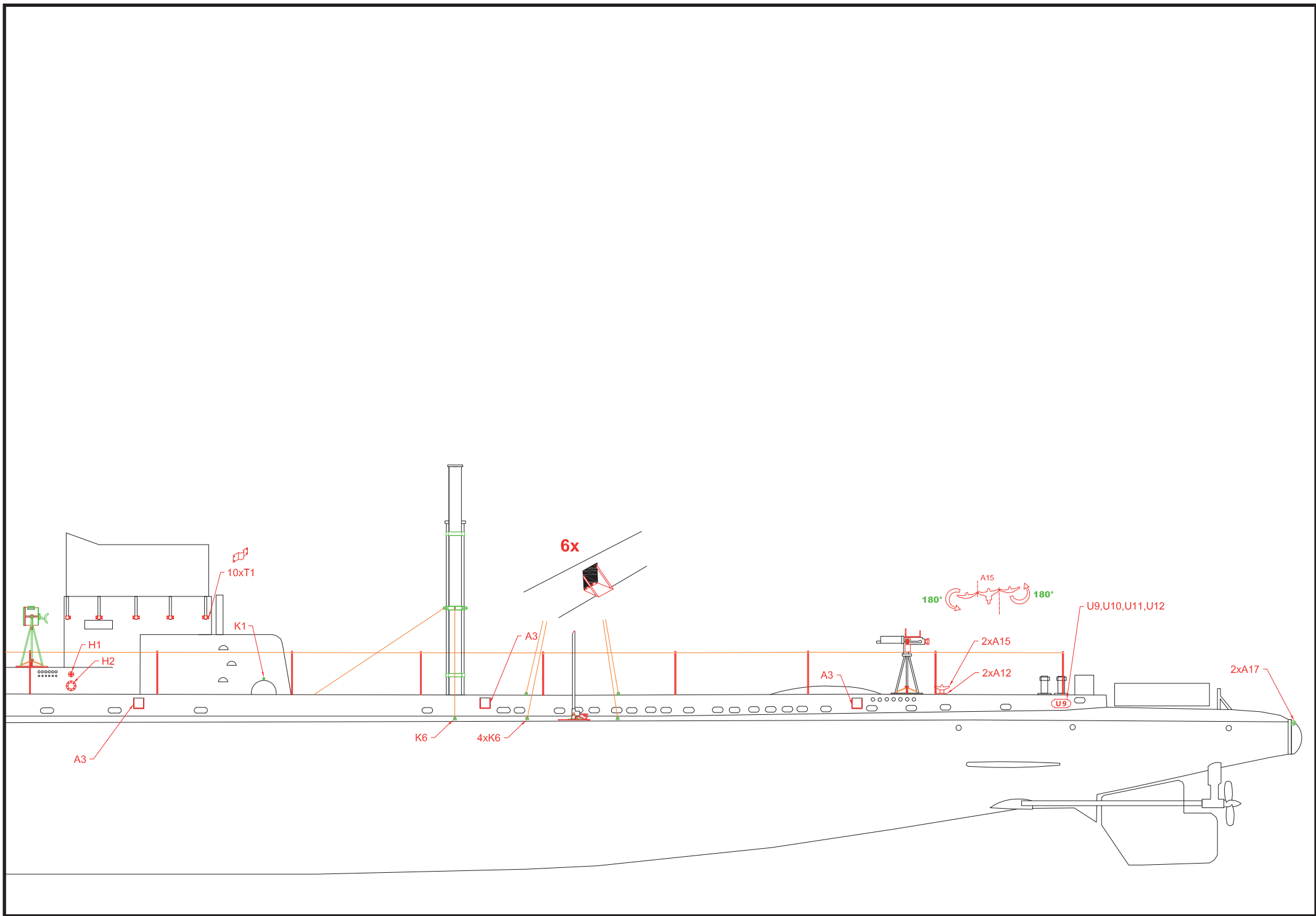
# Headlight

use a suitable powder packaging, for the use of glass in the headlight.

TIP







# U-boat - upper view

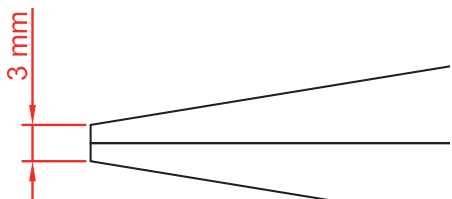


**TIP** The front of the hull is very thick



**TIP**

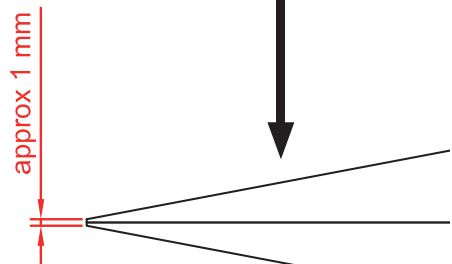
holes in the front cover



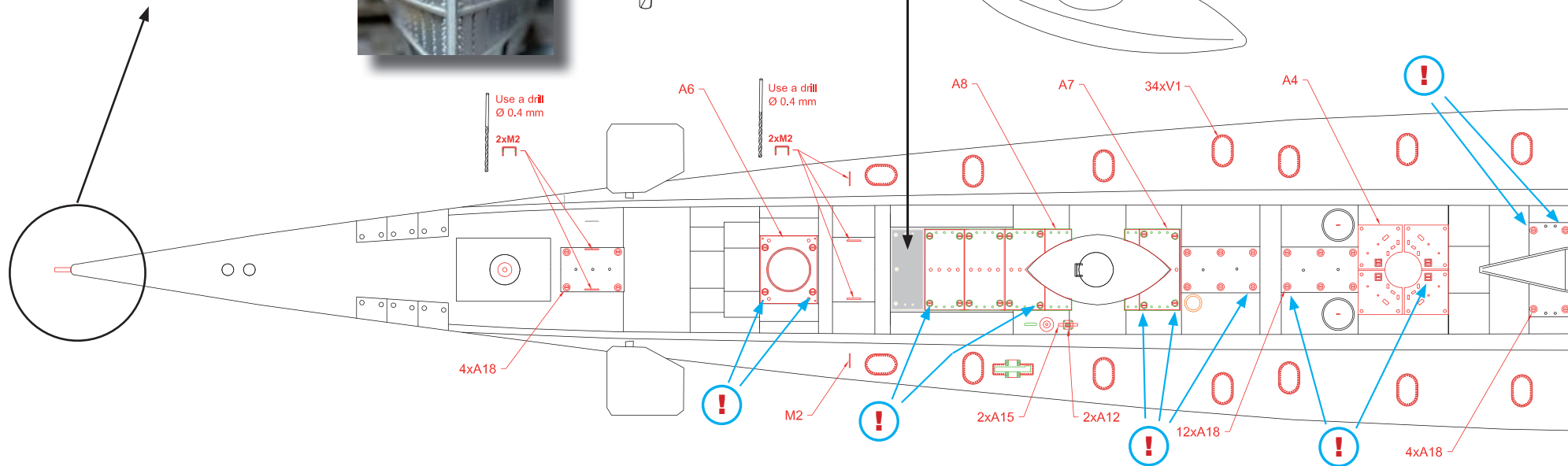
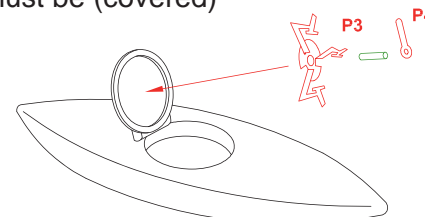
**TIP**



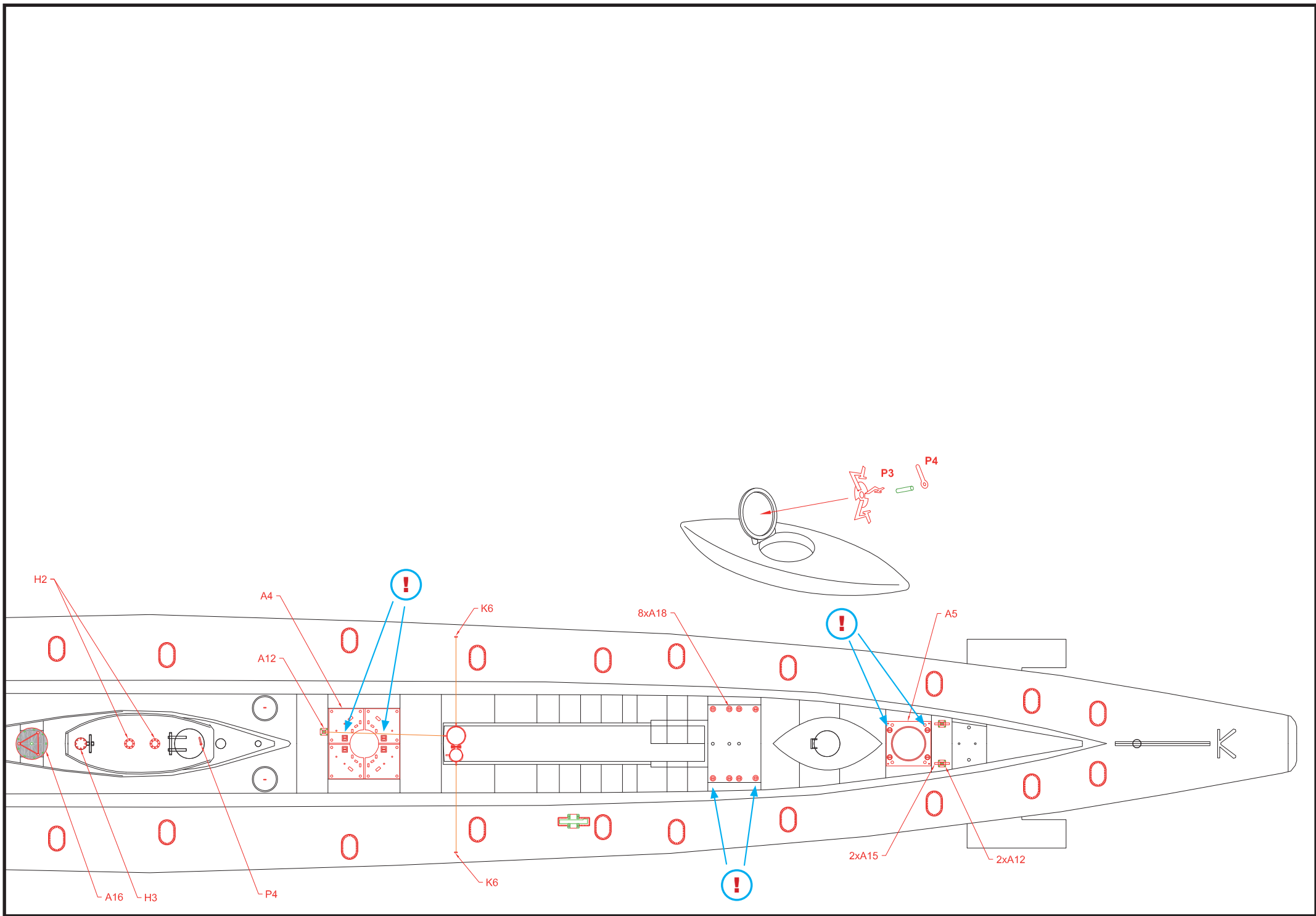
holes must be through the deck. we recommend pre-drilling the holes under the PE set.



this panel must be (covered) use putty.



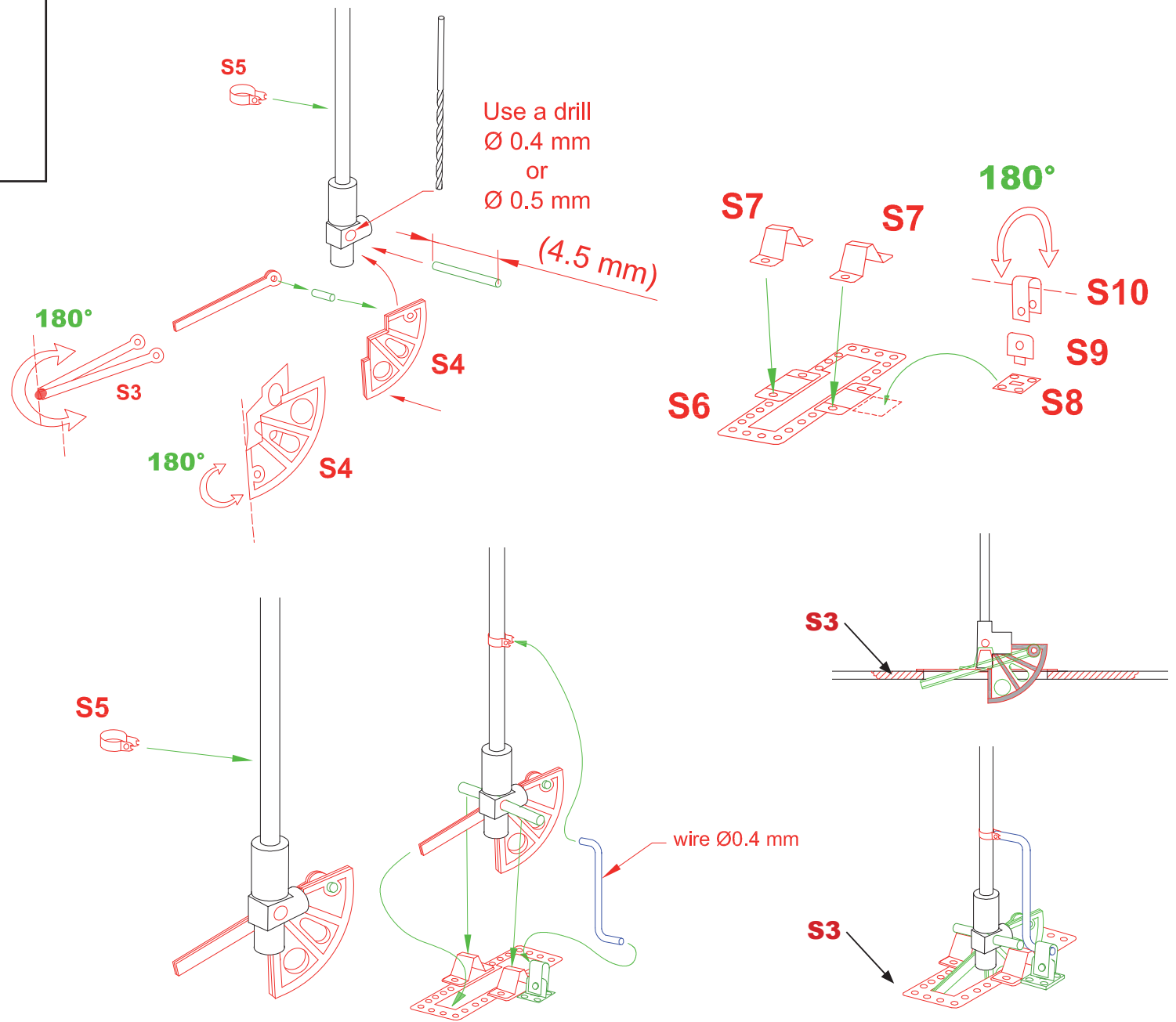
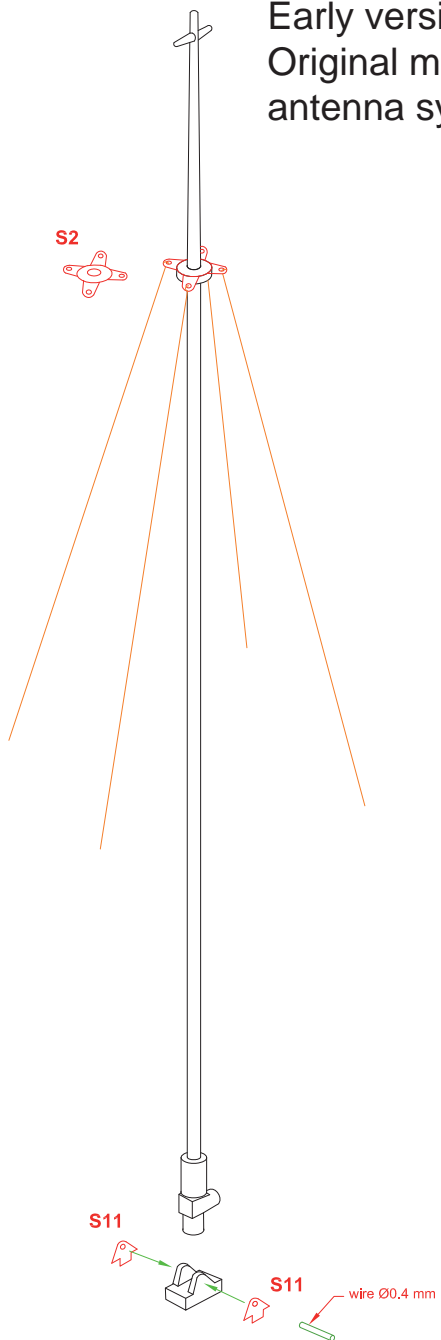




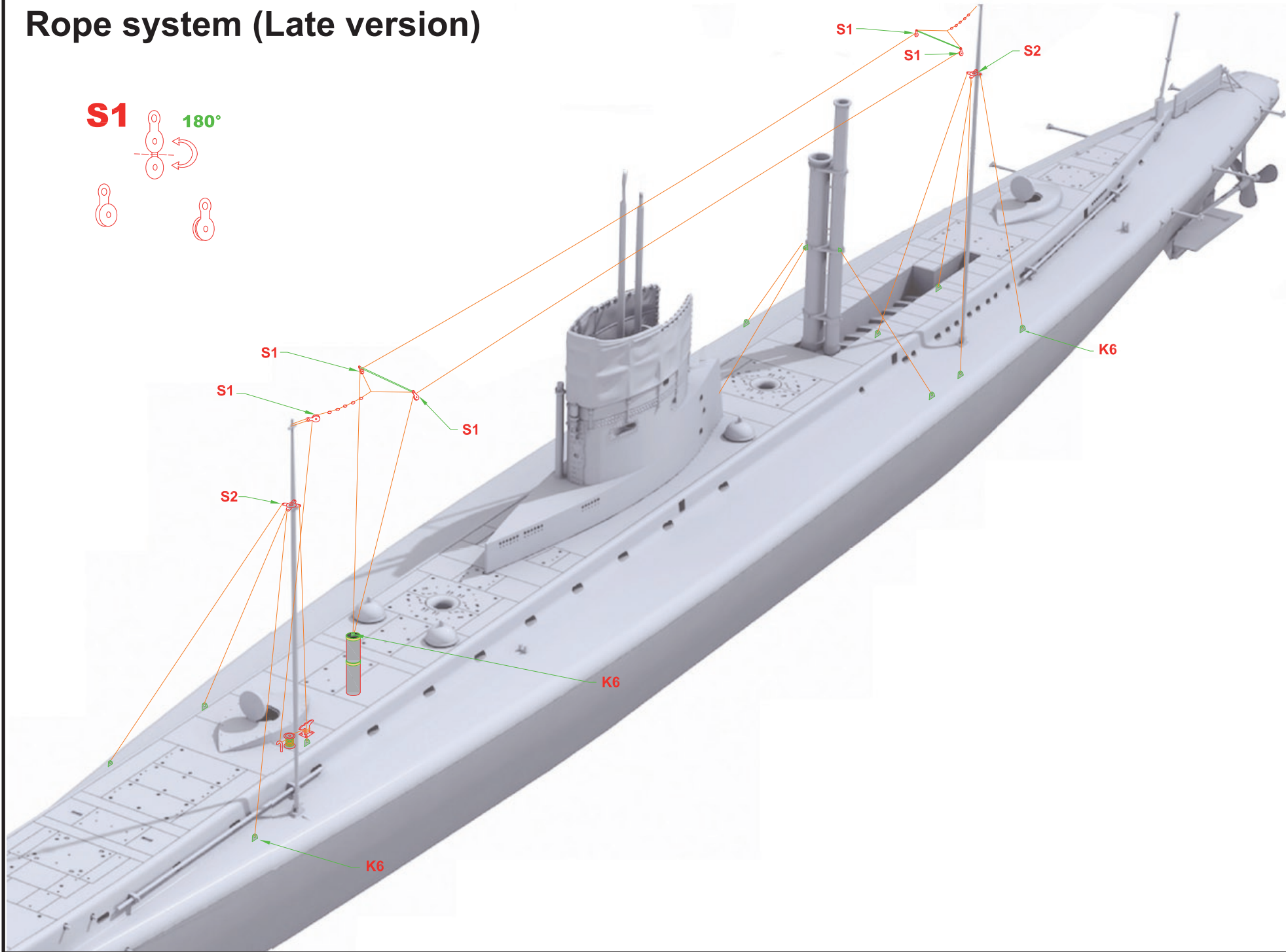
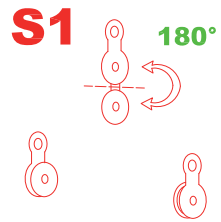
# Antenna system

Early version  
Original manual  
antenna system

Late version: The U-boat was later equipped with pneumatic lifting of antennas.

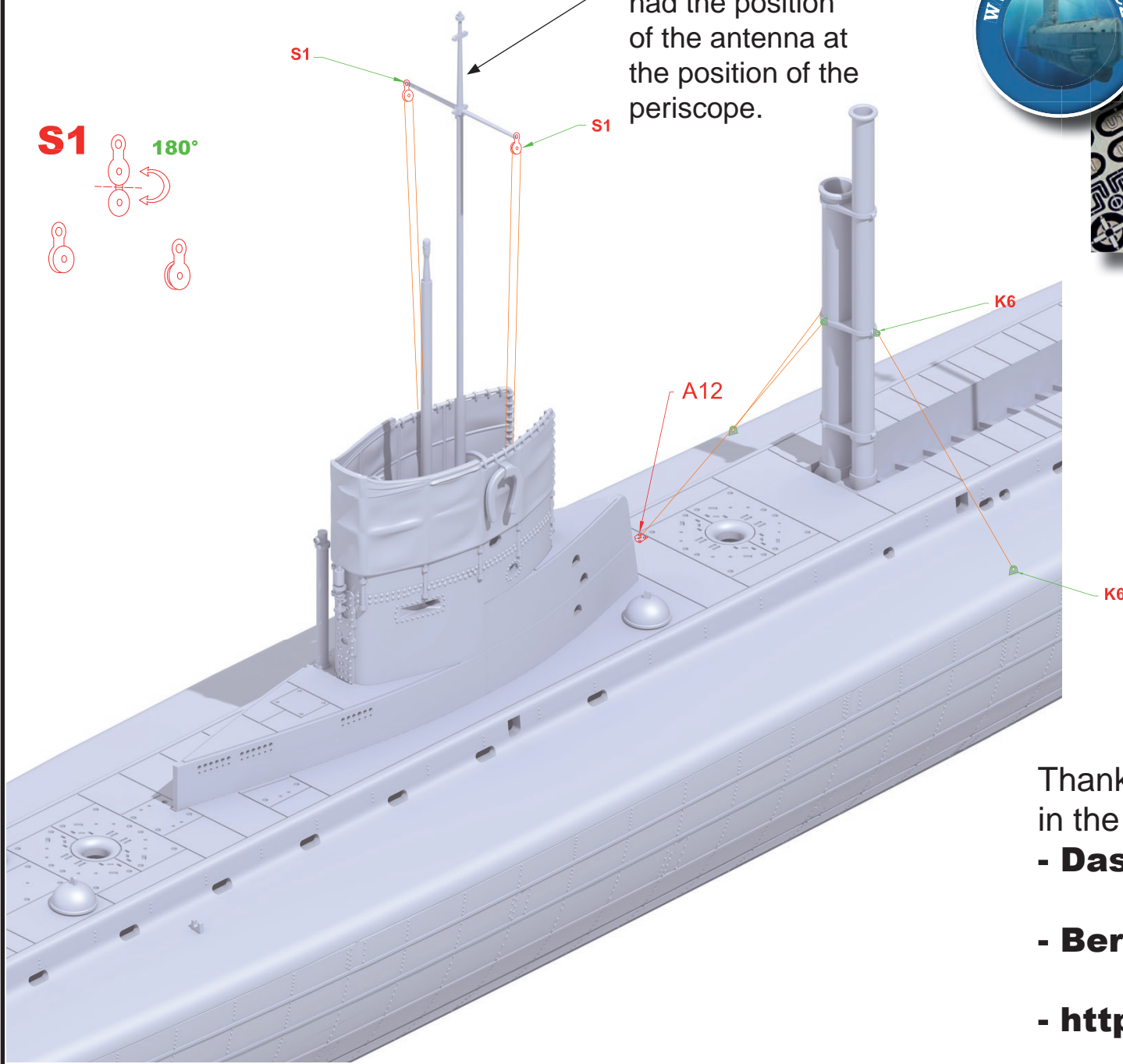
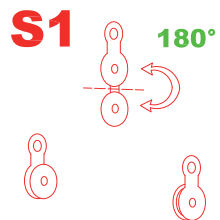


# Rope system (Late version)



# Rope system (Early version)

The early version had the position of the antenna at the position of the periscope.



Thank you for your cooperation in the development of the PE kit:

- **Das Werk**
- **Bernhard Wenzel**
- <https://uboot-recherche.de/en/>