

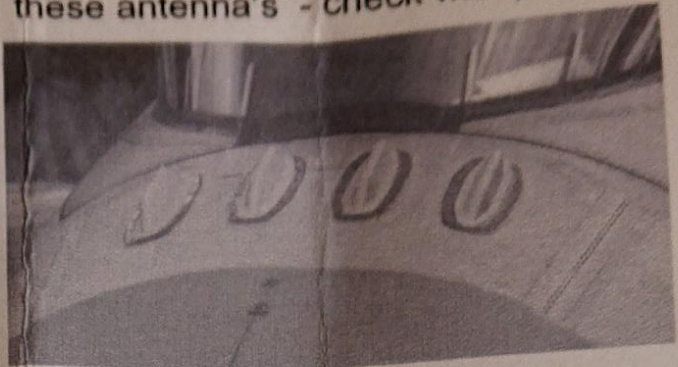
GREEK F16 UPDATE FOR TAMIYA/ACADEMY KITS

Nbr: 3227

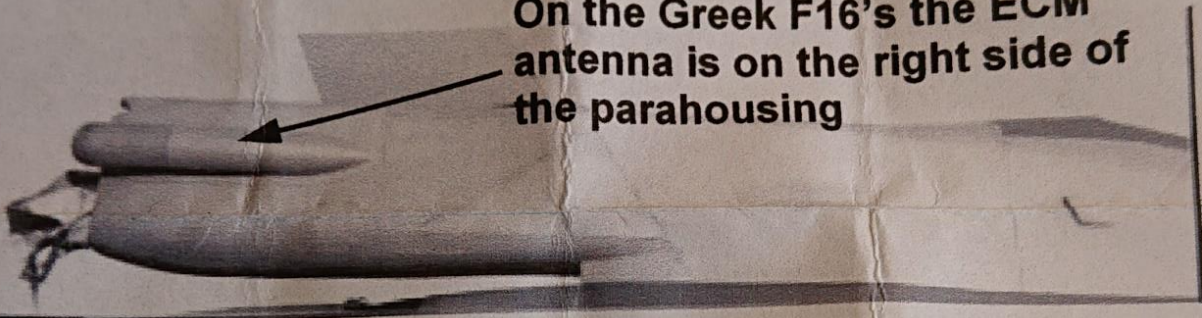
bulged nav light



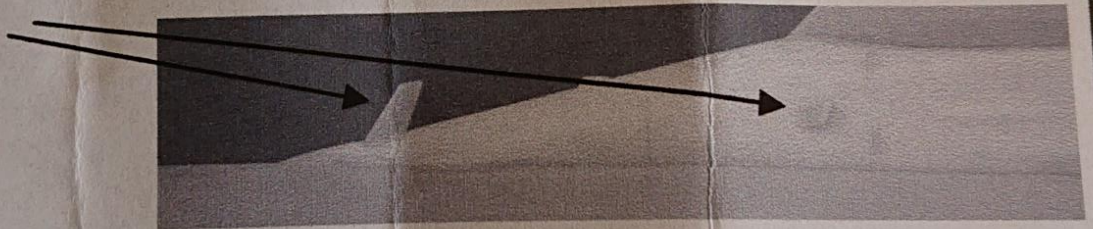
**Position of the IFF antenna's
(for academy)**
Some Greek F16's do not have
these antenna's - check with pics



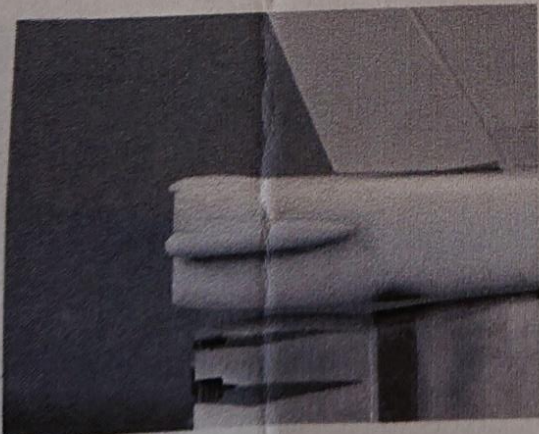
**On the Greek F16's the ECM
antenna is on the right side of
the parahousing**



Kit parts



Check with reference pics for the tail: the most part of the Greek F16's do not have the saw tooth ram on the tails. Sand this off the resin tail



add para pack

