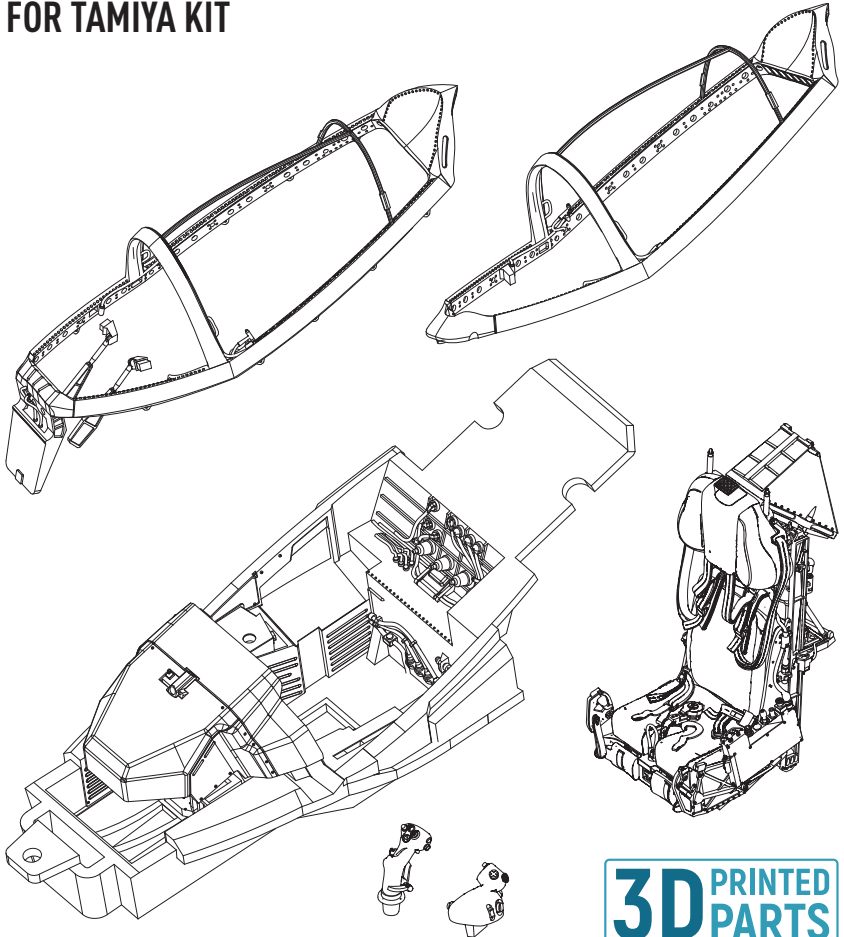


F-35A "LIGHTNING II" COCKPIT (DETAILED EDITION WITH 3D DECALS) FOR TAMIYA KIT



3D PRINTED
PARTS



USE A SAW TO REMOVE SUPPORTS FROM 3D PRINTED PARTS

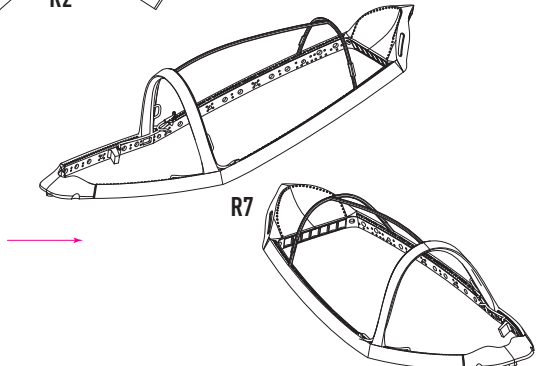
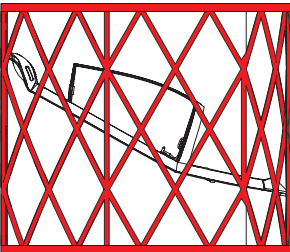
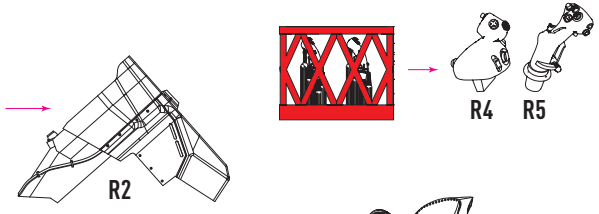
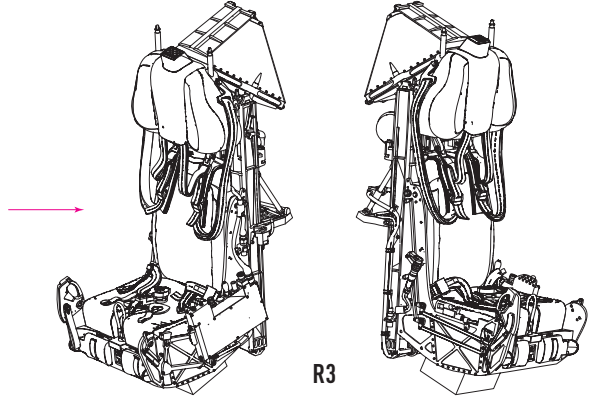
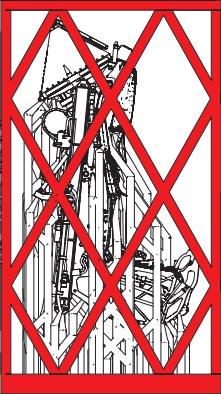
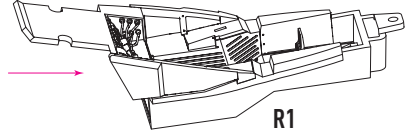
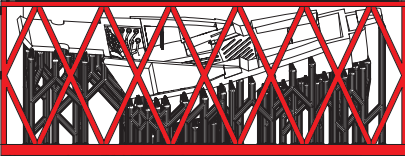
REMOVE PROTECTIVE COVER AND CUT

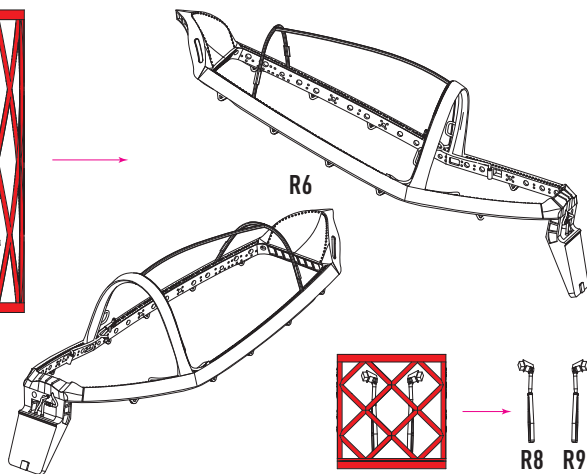
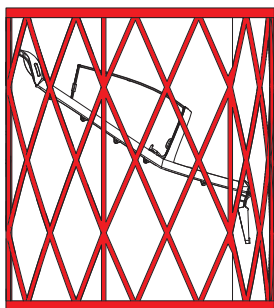


F1



F2





3D DECALS INSTRUCTION



READ BEFORE ASSEMBLY

• Since 3D-Decals are significantly thicker than traditional ones, we advise to use additional adhesive to put it in place. PVA-based glue is recommended, although Microscale MetalFoil Adhesive, or acrylic lacquer (such as Tamiya X-22 or Future Pledge) can also be successfully used.

• Small parts can also be glued with cyanoacrylate glue. Keep in mind that using such glue requires extra care – accuracy, quickness and careful positioning are required since the drying time for CYA glue is very short. CYA gel –based glues may be used for preference, since they do give user more time to position the part.

!!! Using decal softener solutions is NOT RECOMMENDED! You risk to dissolve and damage embossed surface losing the crispness of detail due to its softening.

3D-Decal Working Tips

1. Prepare plastic kit parts for use. In some cases removing the raised details on kit parts may be required (see decal instructions for specifics).
2. Optionally, kit plastic parts may be primed or painted to provide better adhesion for 3D-Decal.
3. Carefully apply glue to a plastic kit part in a uniform thin layer. When using Microscale Metal Foil Adhesive, make sure it is transparent first, then glue the part.
4. Separate the 3D-Decal part from its paper base, submerging it into warm water (just as you would do with

a conventional water-slide decal), then position it upon the plastic kit part. Give it some time dry (approx. 20 mins).

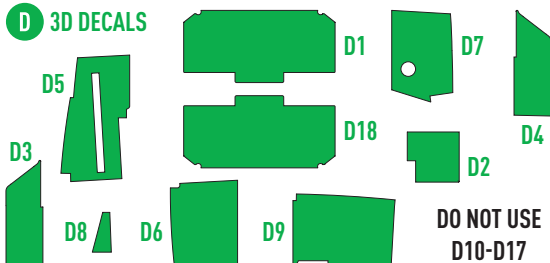
5. To ensure extra adhesion, you may want to use cyanoacrylate glue applied to the side of 3D-Decal part. **USE WITH CARE!** We recommend using bamboo toothpick or thin wire micro-loop for this operation. Using the glue tube itself is not recommended.

If small elements or seat belts are present in 3D-Decal layout, we recommend using cyanoacrylate glue, or CYA-gel.

1. Squeeze a drop of CYA-gel out of the tube onto a separate surface.
2. Dip a toothpick or wire micro-loop into it. Miniscule drop of glue should remain on a tip of a toothpick.
3. Carefully put this miniscule drop onto plastic kit part.
4. Separate the 3D-Decal part in warm water, then remove water from it with dry napkin (paper or fabric), or dry brush.
5. Put the 3D-Decal part in its place on the drop of glue (see step 3). Use sharp tweezers, or a needle, or a tip of a modeling knife, or wet brush.
6. Carefully and quickly position the 3D-Decal part.

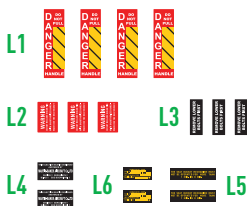
We hope you'll have fun and achieve good results with our products.

D 3D DECALS

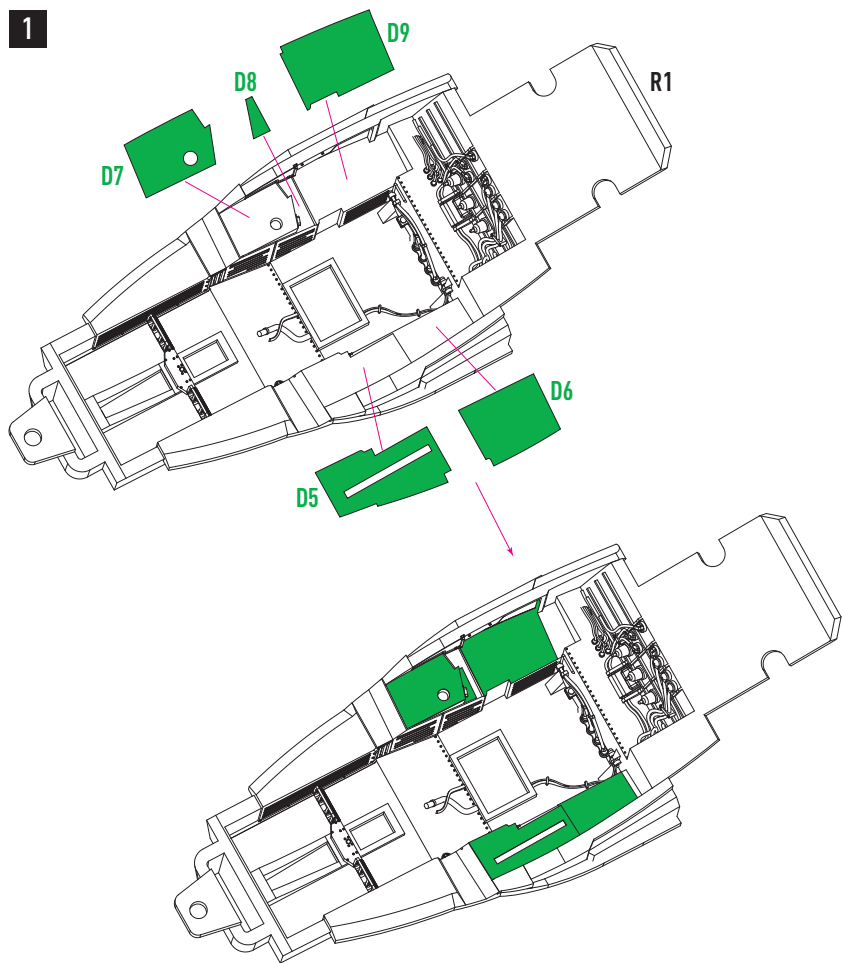


**DO NOT USE
D10-D17**

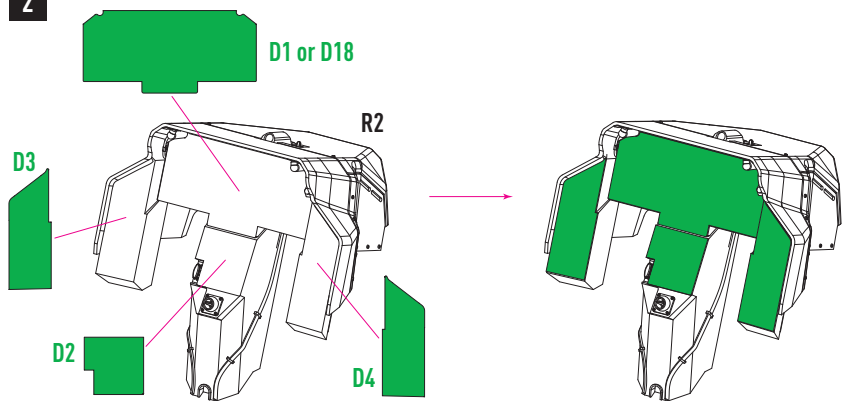
L 3D DECALS



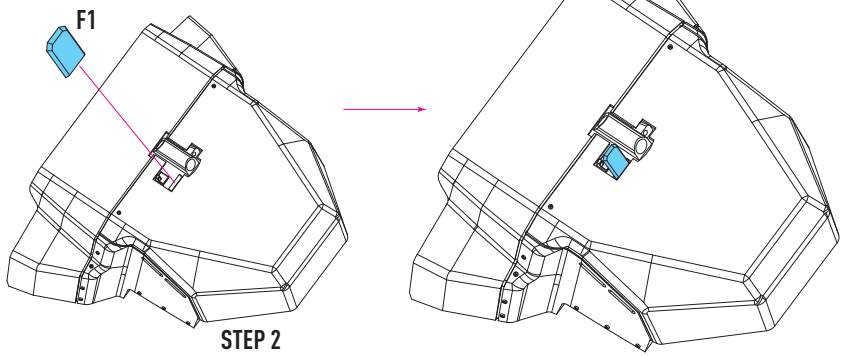
1



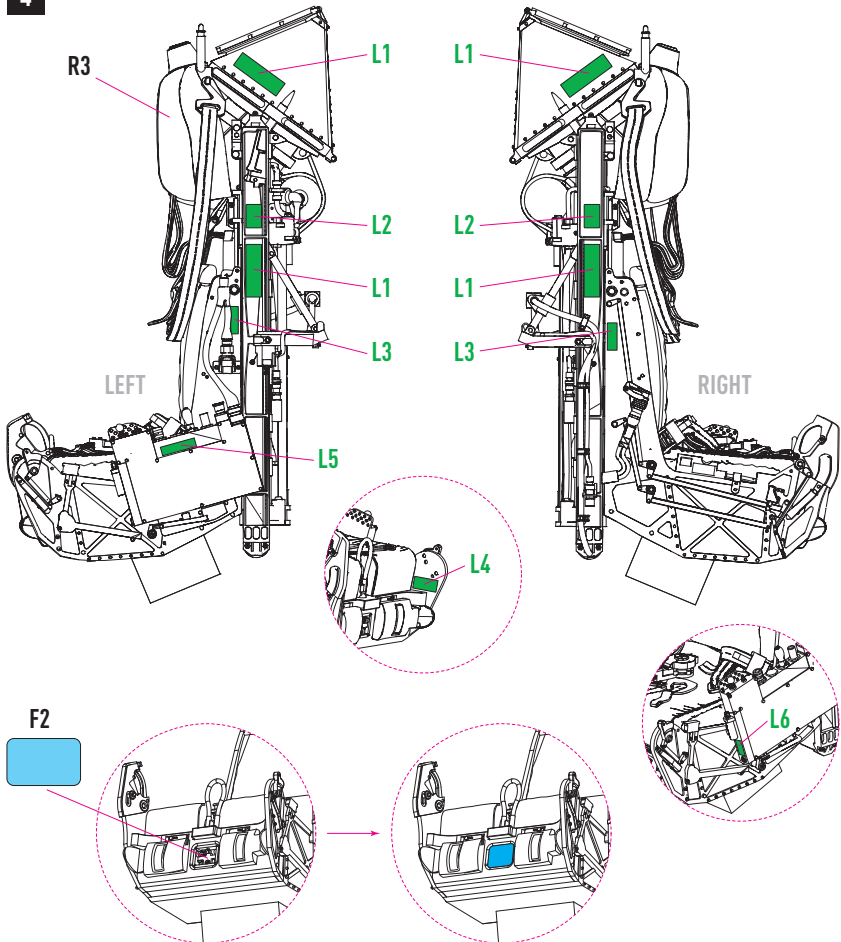
2



3

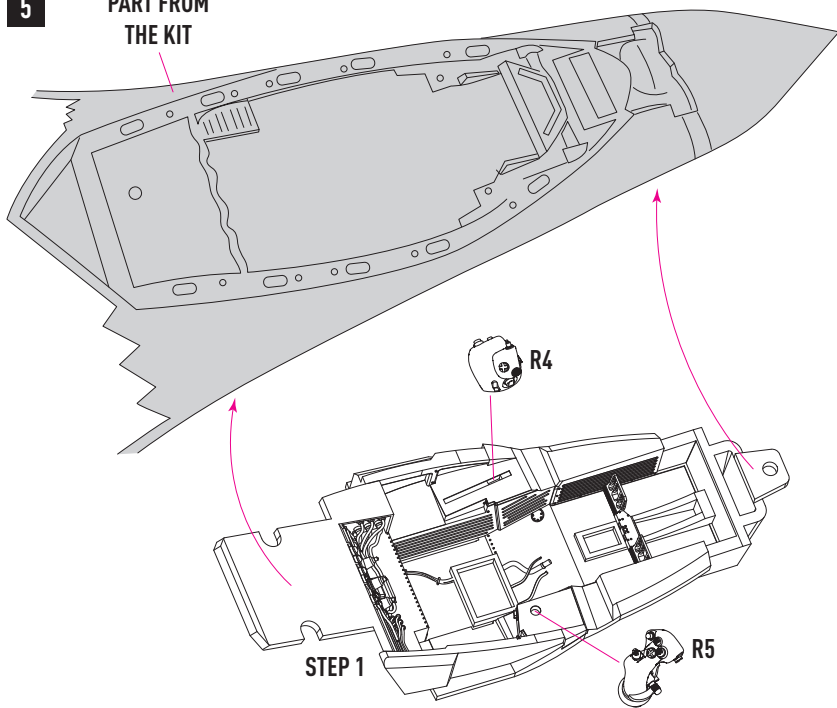


4



5

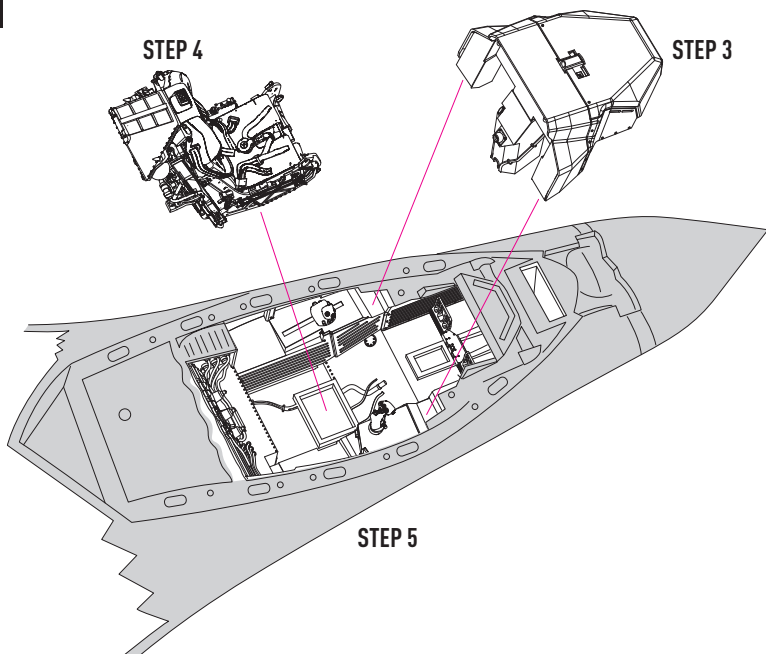
PART FROM THE KIT



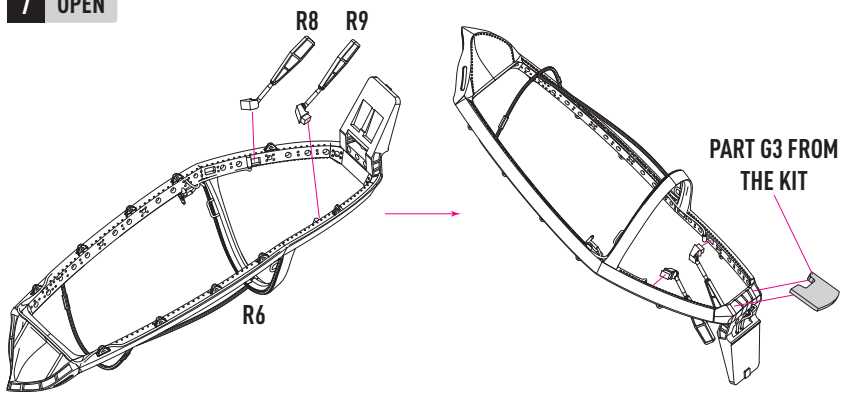
6

STEP 4

STEP 3

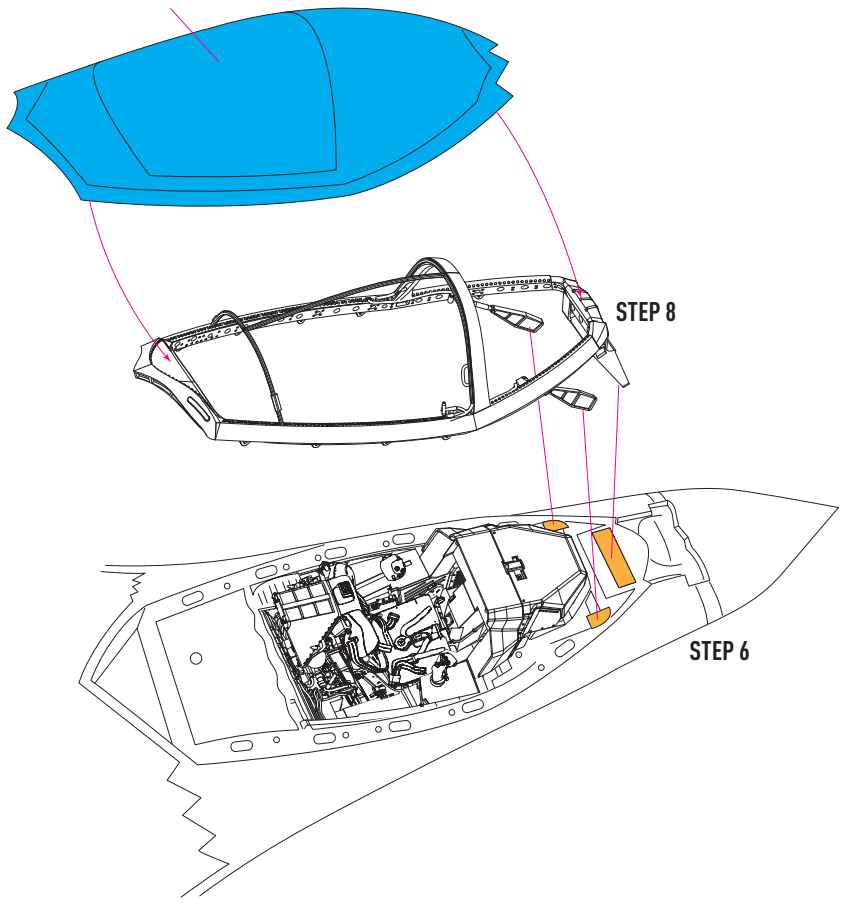


7 OPEN



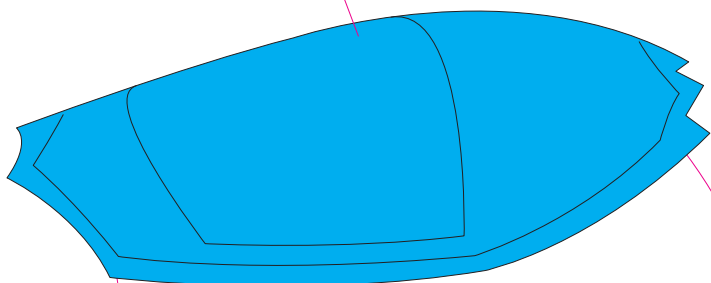
8

PART FROM THE KIT

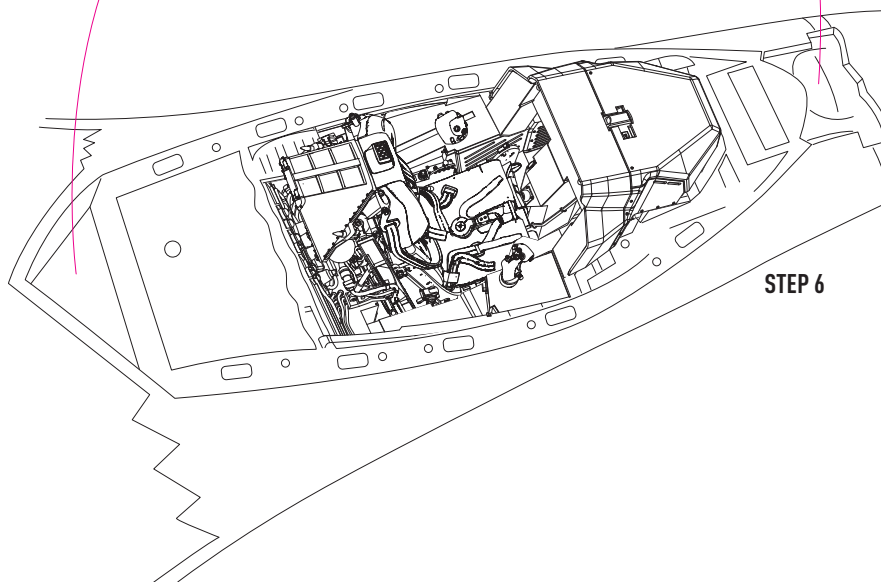
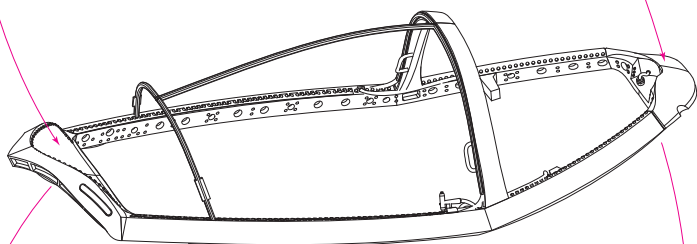


9 CLOSED

PART FROM
THE KIT



R7



STEP 6