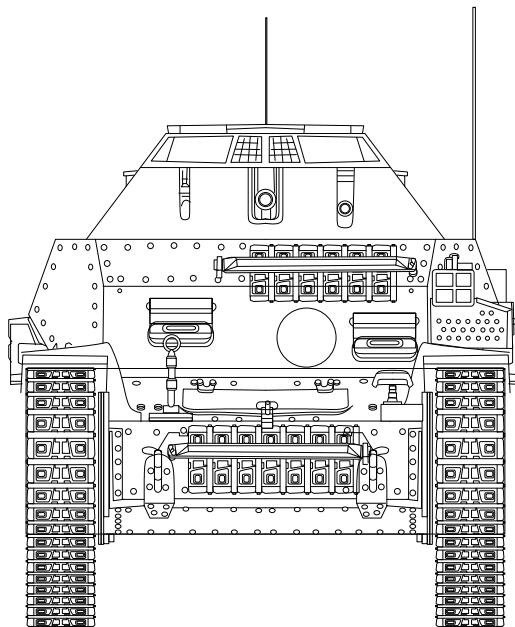


# 35 K05



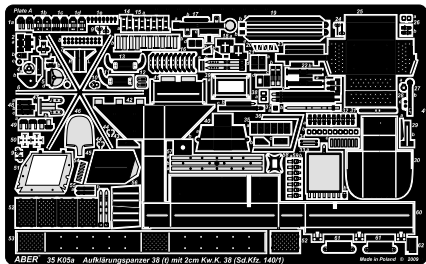
## EXCLUSIVE EDITION



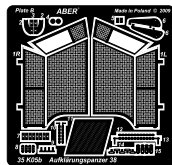
UPGRADE SET  
FOR DRAGON  
1/35 MODEL no 6294

**Sd.Kfz. 140/1  
Aufklärungspanzer 38(t)  
mit 2cm Kw.K. 38**

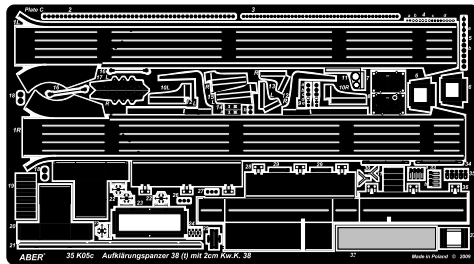
A



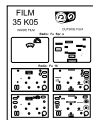
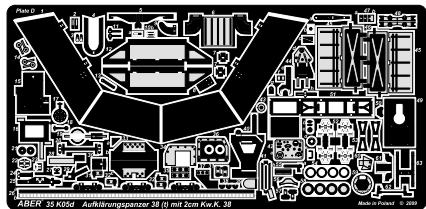
B



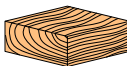
C



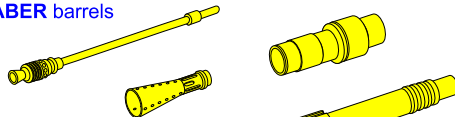
D



Wood  
chock



ABER barrels



brass rod

Ø 0,5 mm

Antenna 1,8 m

Antenna 1,4 m

Wire

Ø 0,3 mm



10cm

## MOST IMPORTANT BIBLIGRAPHY:

- 1) Die Panzer - Kampfwagen 35(t) und 38 (t) und ihre Abarten -  
Walter J. Spielberger, Hilary L. Doyle ©1997
- 2) Marder III & Grille -Vladimir Francev, Charles K. Kliment - MBI ©1999
- 3) Panzer Tracts No.11-2, Aufklarungspanzerwagen (Full and  
Half-Trackrd Armoured Reconnaissance Vehicles)  
- Thomas L. Jentz & Hilary Louis Doyle
- 4) PzKpfw II Luchs Aufklarungspanzer 38(t) SdKfz 140/1 - Nr 109  
- Janusz Ledwoch - Wydawnictwo Militaria ©2000

Thank you for purchase our set [35 K05](#).

Read carefully this instruction.

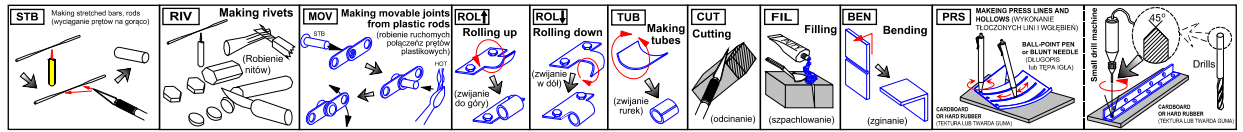
We advise that better method to join metal to metal parts is soldering.  
Cement metal parts to plastic with good cyanoacryl or epoxy glue.

### WARNING

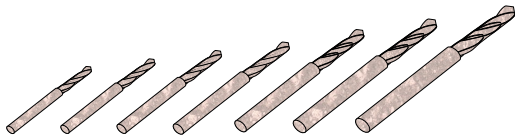
Any unauthorized copying, producing and reproducing of ABER company products, or any part thereof, is strictly prohibited and any such action establishes liability for a civil action and may give rise to criminal prosecution.

### OSTRZEŻENIE

Jakiegokolwiek kopiowanie, produkowanie i reprodukcja wyrobów firmy ABER bez zezwolenia, w całości lub części jest surowo zabronione. Powyższe działania powodują powstanie odpowiedzialności cywilnej oraz mogą spowodować wszczęcie postępowania karnego.



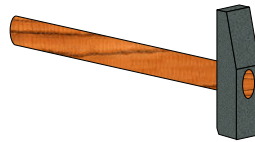
## TOOLS RECOMMENDED



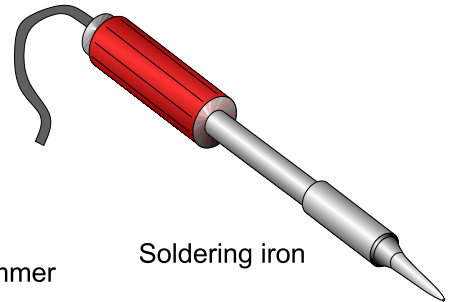
Drills from  $\varnothing$  0,4 to 1,5 mm



Assortment of cutting wheels and mills



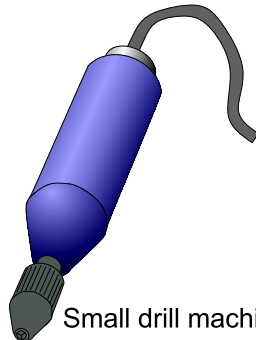
Light weight hammer



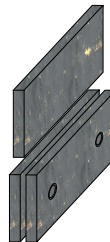
Soldering iron



Sharp knife



Small drill machine



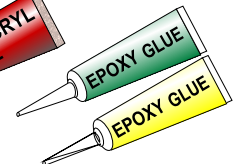
Bending tool  
PG01 or PG02

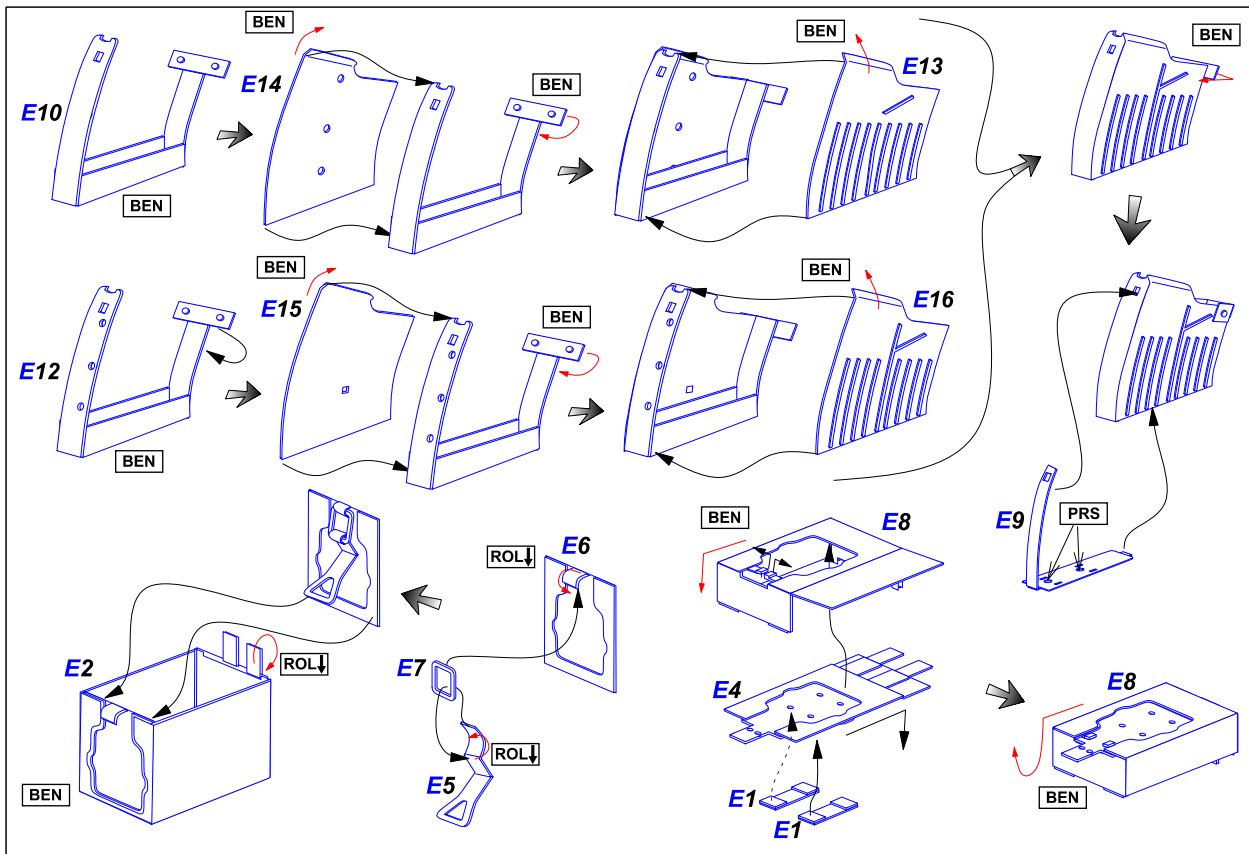


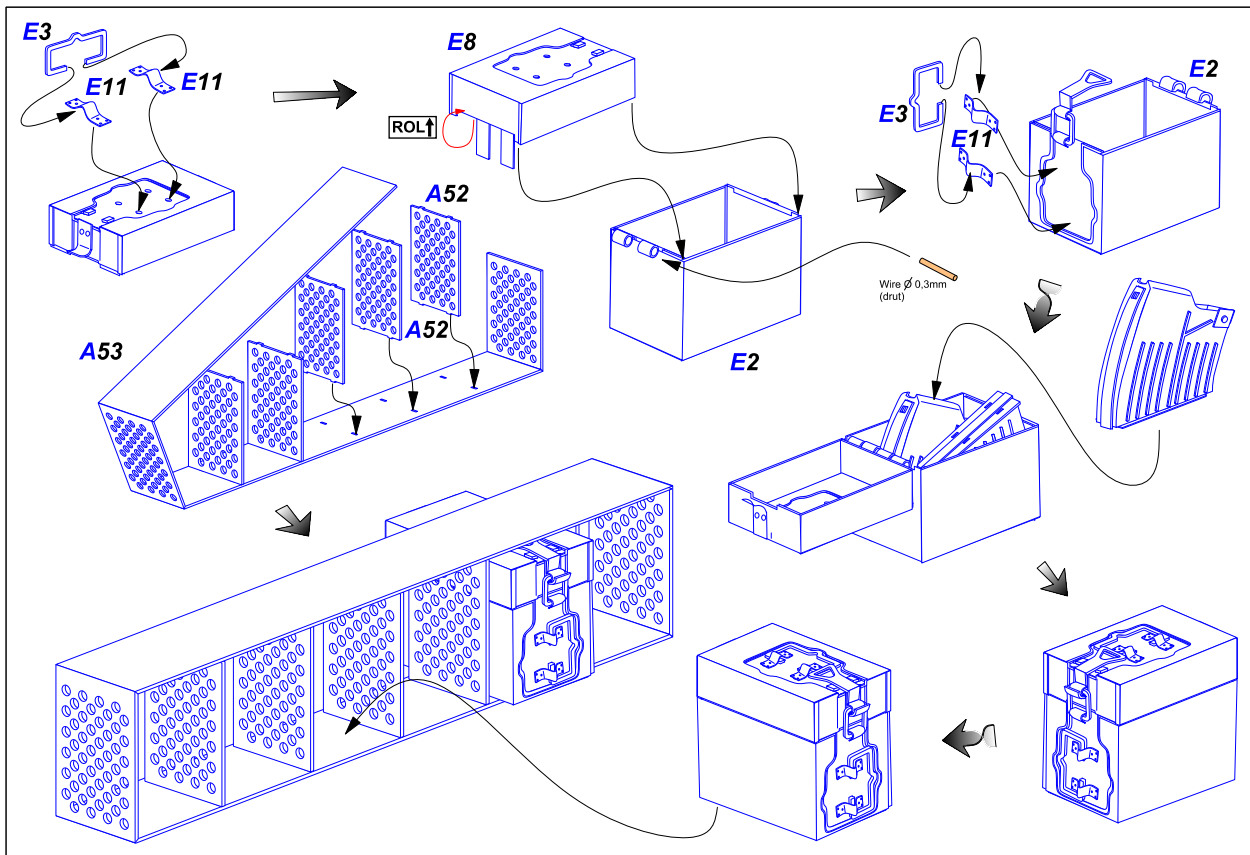
Soldering flux

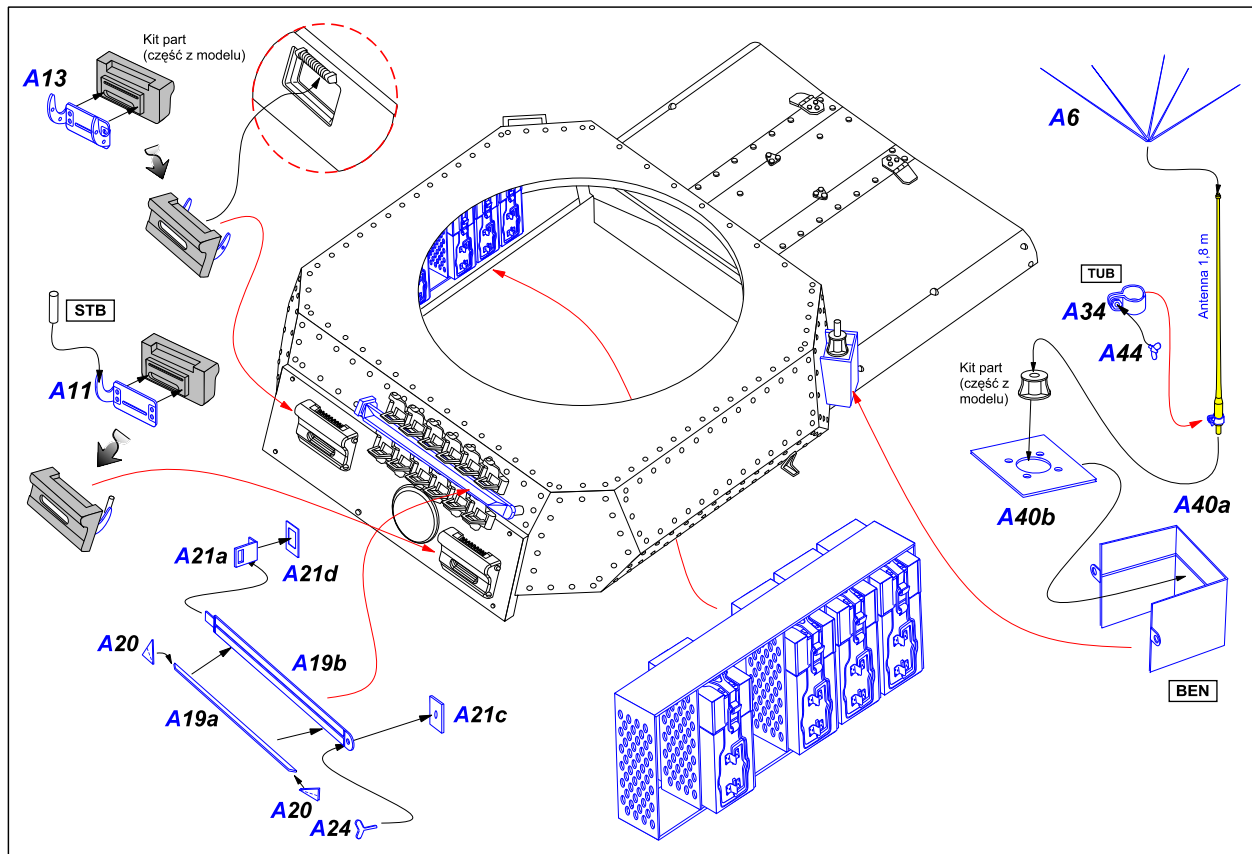


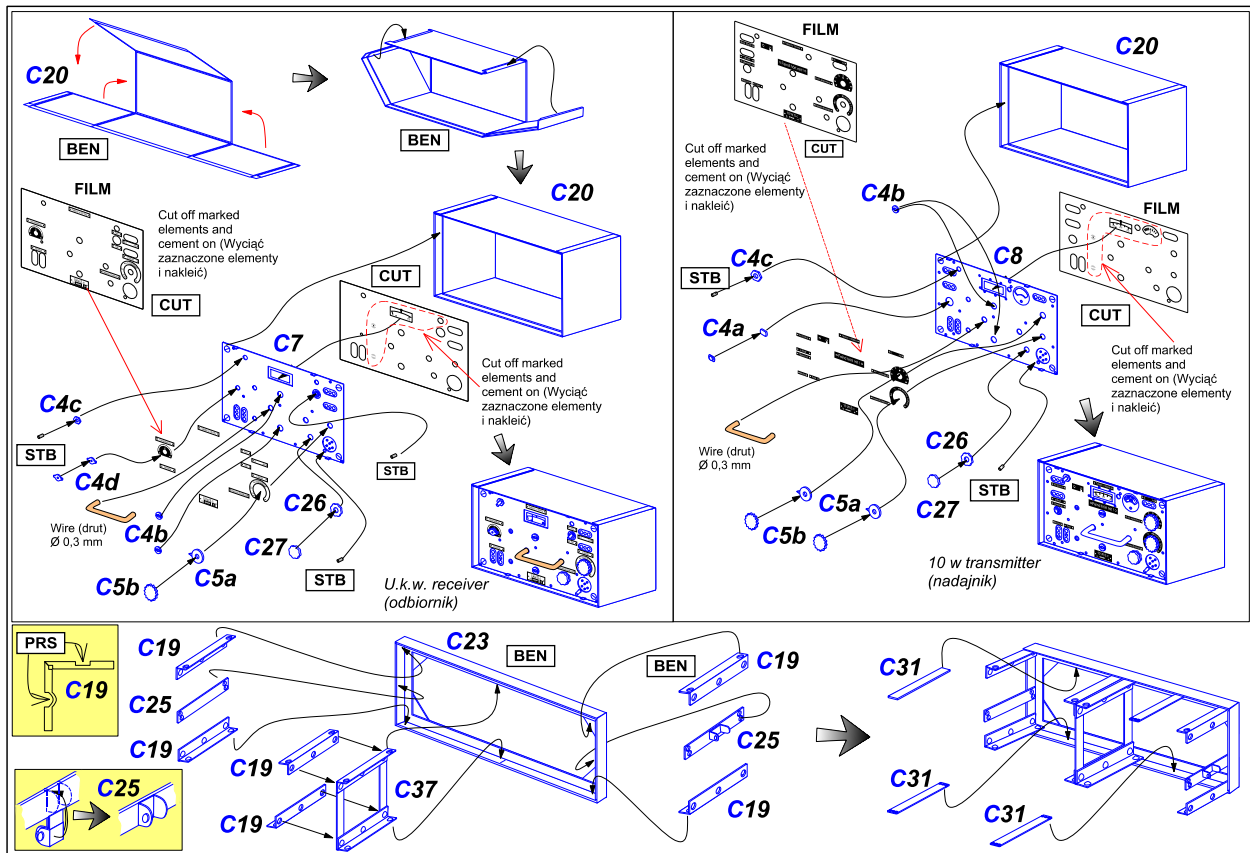
Solder



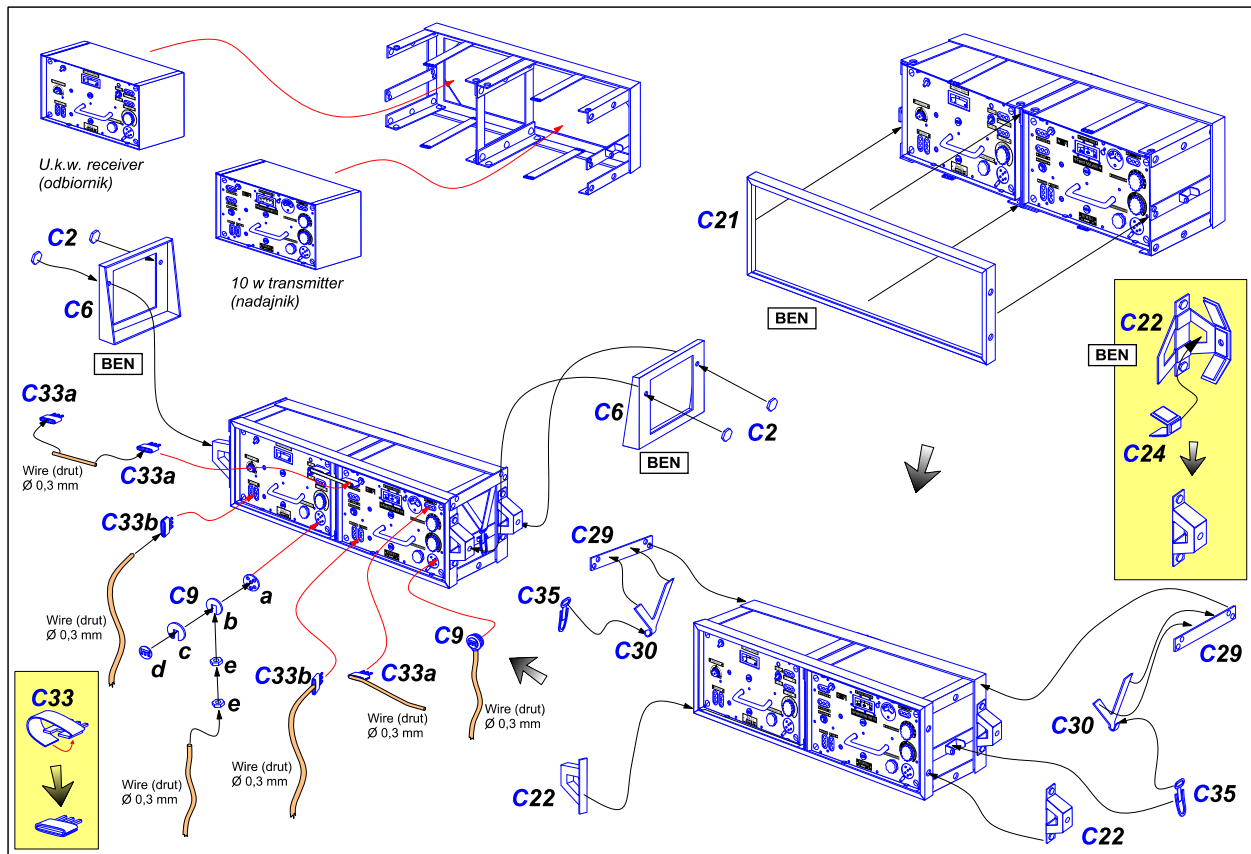


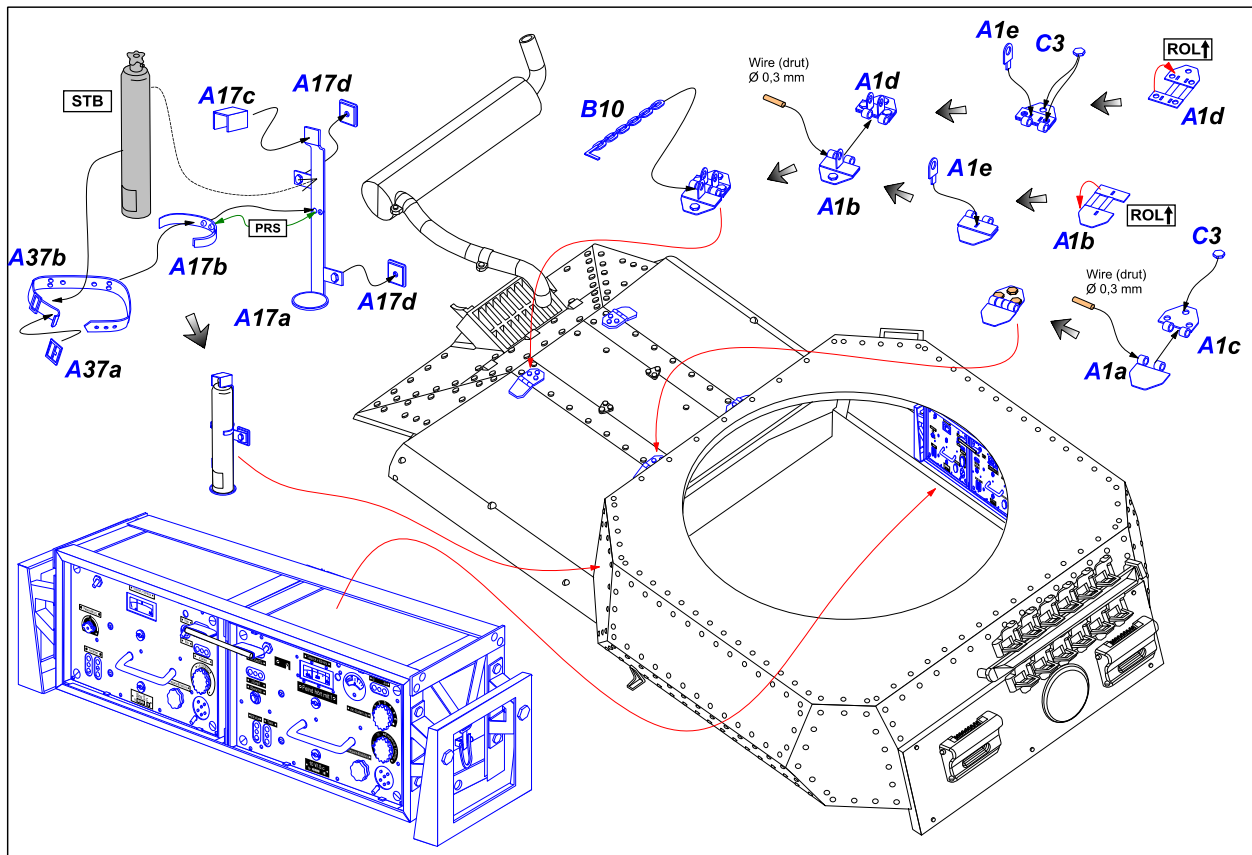




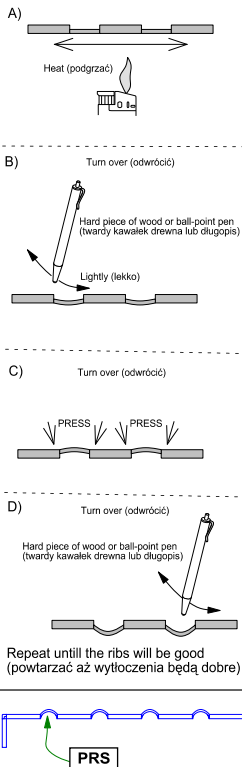








## How to make ribs (jak zrobić tłoczenia)



L- left side (*lewa strona*)  
R- right side (*prawa strona*)

