

PANZERKAMPFWAGEN MK IV, 744(E) (A13)

1/35 SCALE

德军MK.IV,744(E)(A13)坦克



The A13, Cruiser Tank Mk.IV was the first of a long line of British Cruiser Tanks to use the American Christie suspension, which allowed high cross country speeds. Some of the first A13 tanks were sent to France with the British Expeditionary Force (BEF) in 1940 to defend against the German attack. Unfortunately the tanks were over run before they got a chance to fight. Though most tanks were destroyed by their crews, a few A13's were captured by the Germans and pressed into service as the Panzerkampfwagen 744(e). The Germans used some of these tanks in Russia, where they were fitted with PzKpfw IID tracks and other equipment. Little information is available on their use, but photographs confirm their use by the Pz.Abt.100 of 18th Panzer Division during the Barbarossa drive for Moscow.

Information & research by Phil Greenwood

Der A13 (Typ Kreuzerpanzer Mk IV) war der erste einer langen Reihe von englischen Panzern mit dem amerikanischen Christie Fahrwerk. Die ersten Einsätze erfolgten im Rahmen des britischen Expeditionskorps 1940 in Frankreich gegen die Wehrmacht. Ohne nennenswerten Kampferfolg wurden viele A13 von ihren Besatzungen zerstört. Die erbeuteten einsatzfähigen Fahrzeuge gliederte man unter der Bezeichnung „Panzerkampfwagen 744 (e)“ ein. Nach der Umrüstung auf deutsche Ketten sowie weiteren Modifikationen wurden die A13 nach Russland verlegt. Über den Verbleib ist wenig bekannt, aber zeitgenössische Fotografien belegen den Einsatz bei der 18. Panzerdivision vor Moskau.

© Translation Michael Knoblich Academy Europe

A13 Mk.IV 型是延用有超卓越的越野速度及性能,安装了美国'克里斯蒂'坦克避震悬挂系统的英国巡航坦克。1940年首批被生产出来的A13坦克被派送到法国前线的英国远征军(BEF)协防德军的攻击。不幸局势急转直下,致使大部份这些坦克被自己的乘员所毁坏,部份的A13落入德国人手里并重新使用,按照传统德国人将其命名为Panzerkampfwagen 744(e)。德国人在俄国使用了其中部份A13坦克,并将其某些部件如履带及车上装备修改为德式,可与Pz IID型坦克共享。虽然很少资料提到他们的存在,但有历史照片证实:德国人将这些A13坦克装备其第18装甲师之第100装甲团第1营,用于进攻莫斯科的'巴巴罗沙'行动上。

ILLUSTRATION 图示说明:

CORRECT METHOD FOR APPLYING DECALS : HINWEISE ZUM ANBRINGEN DER DECALS 正确贴水贴纸的方法:

1. Clean model parts surface with wet cloth. Entsprechende Stellen am Modell feucht reinigen.
将需要贴水贴纸之部位表面擦干净。
2. Cut out the decal parts and dip them in cold water for 15-20 seconds. Decal ausschneiden und für 15-20 Sek. ins Wasser legen.
将所需之贴纸剪下泡在清水里约15至20秒。
3. Place it on correct position of the model kit. Decal an der richtigen Stelle auflegen.
将湿透之贴纸取出置放于正确之位置旁。
4. Slide off the decal from the base paper on to the model kit surface with a cotton stick. Decal mit Wattestäbchen festhalten und Papier darunter wegziehen.
用棉花棒轻推贴纸表面使其从底纸滑出至模型表面之正确位置。
5. When decal get dry then complete. Decal mit Papiertuch andrücken und trocknen.
待其自然干透后即完成。

ICON INSTRUCTION: 图标说明:



Open Hole
Loch bohren
钻孔



Remove
Abtrennen
切除



2 Sets needed
Vorgang wiederholen
同样的制作二组



Bend
Biegen
曲折



Optional
Auswahl
可以选择采用



Apply Decal
Decal anbringen
贴上水贴纸



Instant Glue For Metal
Sekundenkleber verwenden
瞬间接着剂,金属用



Fill Hole
Verspachteln
把孔填平



Do not cement
Nicht kleben
不用粘合

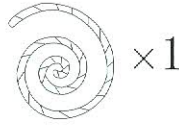
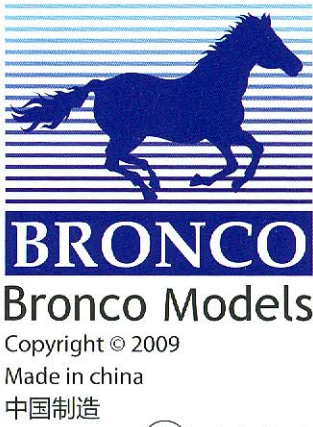
COLOR SUGGESTION: FARBTABELLE: 涂装指引:

Color 涂料表	Gunze Sangyo	Hobby Color	Humbrol	Tamiya
Steel Stahl 黑铁色	H-18	C-28	53	/
Wood brown Holzbraun 木棕色	H-37	C-43	/	/
Silver Silber 银色	H-8	J-8	11	X-11
Flat white Matt Weiß 消光白	H-11	C-62	34	XF-2
Tyre black Reifen Schwarz 轮胎黑	H-77	C-137	85	/
Semi-gloss black Schwarz Seidenmatt 半光黑	/	C-82	/	/
White Weiß 白色	H-1	C-1	/	X-2
Flat black Matt Schwarz 消光黑	H-12	C-33	33	XF-1
Burnt iron Metall brüniert 烧铁色	H-76	C-61	/	/
Rust Rust 铁锈色	H-334	/	113	/
German gray Deutsch grau 德国灰	H-32	C-40	92	XF-63

READ BEFORE ASSEMBLING: VOR ZUSAMMENBAU LESEN: 组装必读:

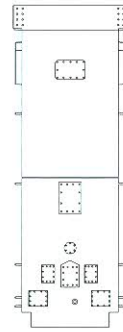
- Carefully Study instruction before assembling. Anleitung studieren und verständlich machen. 组装前请阅读清楚制作指引。
- Keep plastic model glue and tools away from children. Kleber, Farben, Werkzeuge und Plastiktüten von Kindern fernhalten. 胶水,油漆及工具勿让小孩接触。
- Do not use cement or paint near open flame or sparks. Kleber/Farbe nicht in Nähe von offenen Flammen. 胶水及油漆勿接触火种。
- Do not work in closed room. Nur in ausreichend belüfteten Räumen arbeiten. 勿在密封地方制作模型。

PARTS LIST 零件展示表:

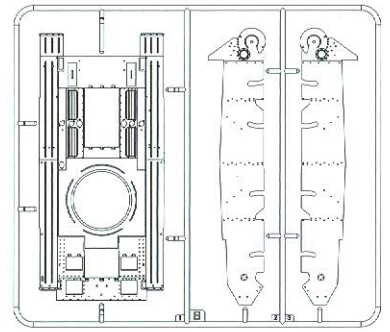


No use parts
不要部件

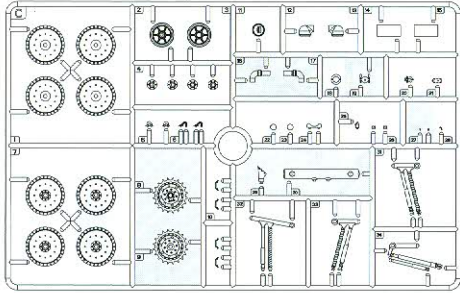
Ⓐ × 1



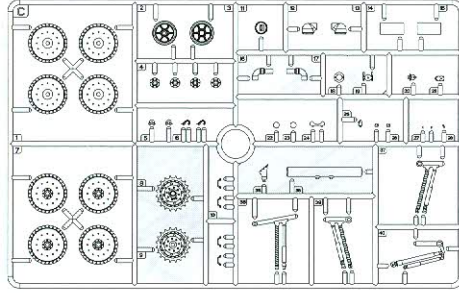
Ⓑ × 1



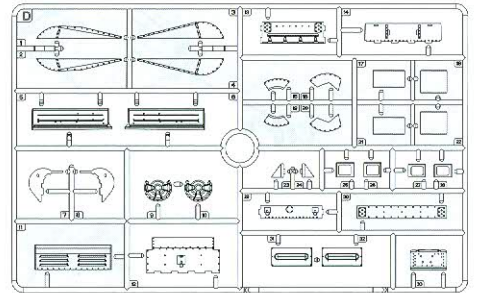
Ⓒ₁ × 1



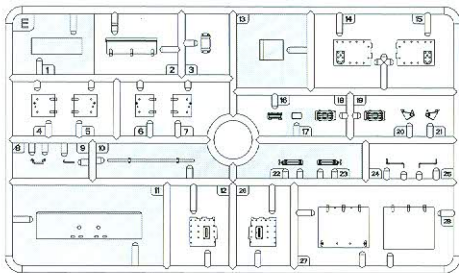
Ⓒ₂ × 1



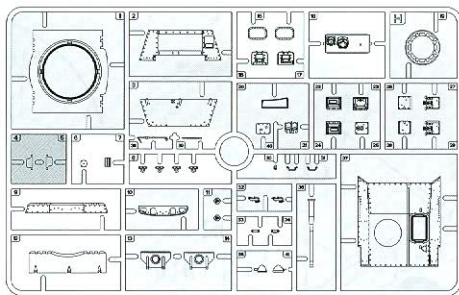
Ⓓ × 1



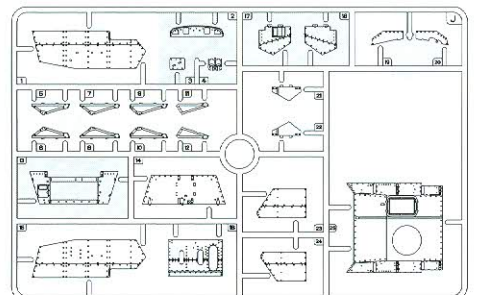
Ⓔ × 1



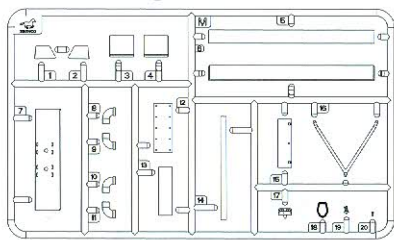
Ⓕ × 1



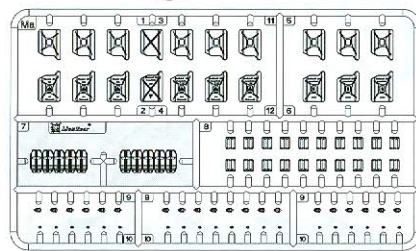
Ⓙ × 1



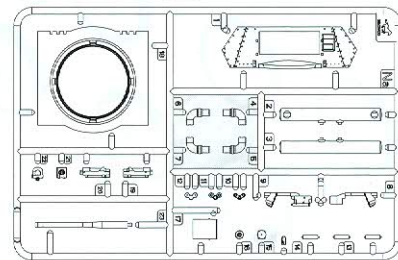
Ⓜ × 1



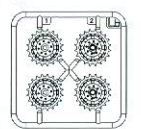
Ⓜ_a × 2



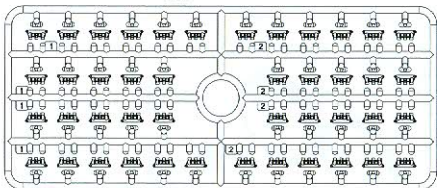
Ⓝ_a × 1



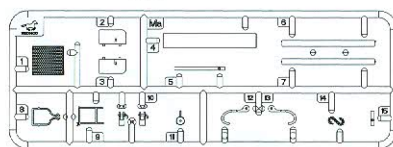
Ⓛ_b × 1



Ⓣ × 6



Ⓜ_a × 2



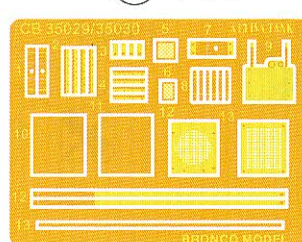
Ⓦ × 1



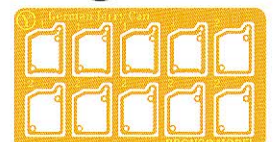
Ⓟ_A × 1



Ⓟ × 1



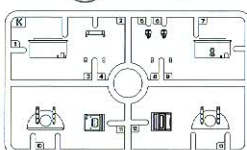
Ⓟ_B × 1



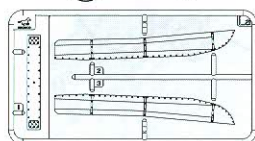
Ⓖ × 1



Ⓚ × 1

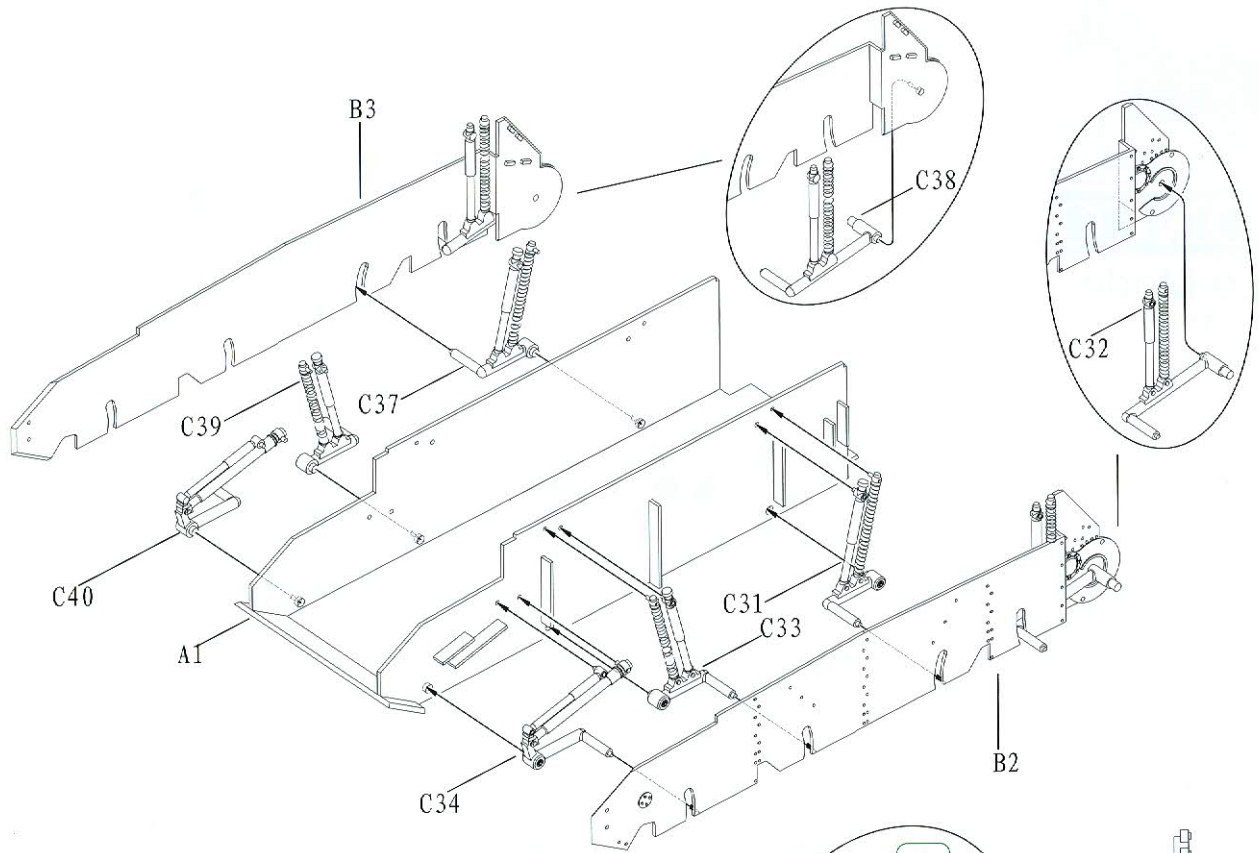


Ⓛ_a × 1

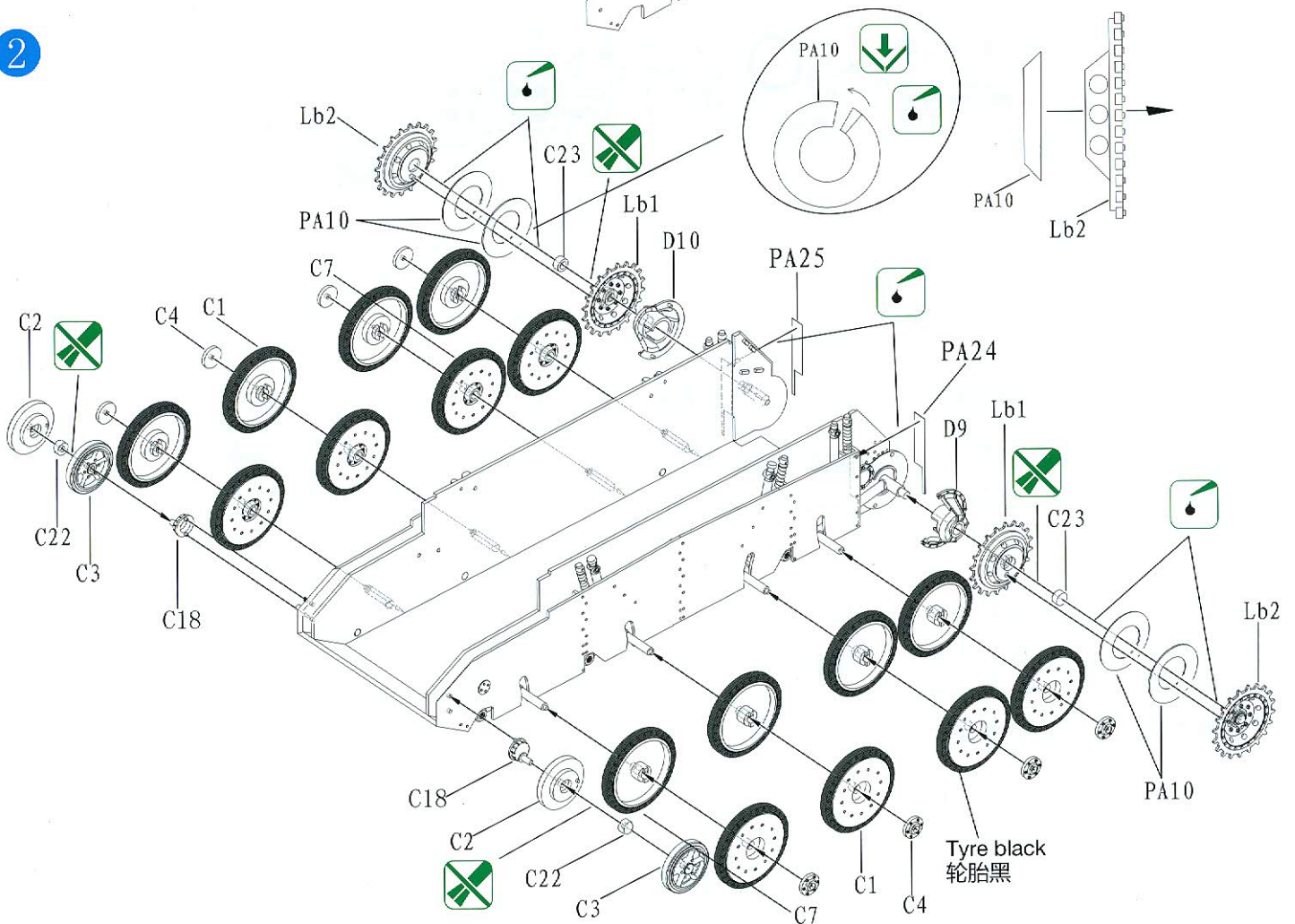


CB-35030

1



2



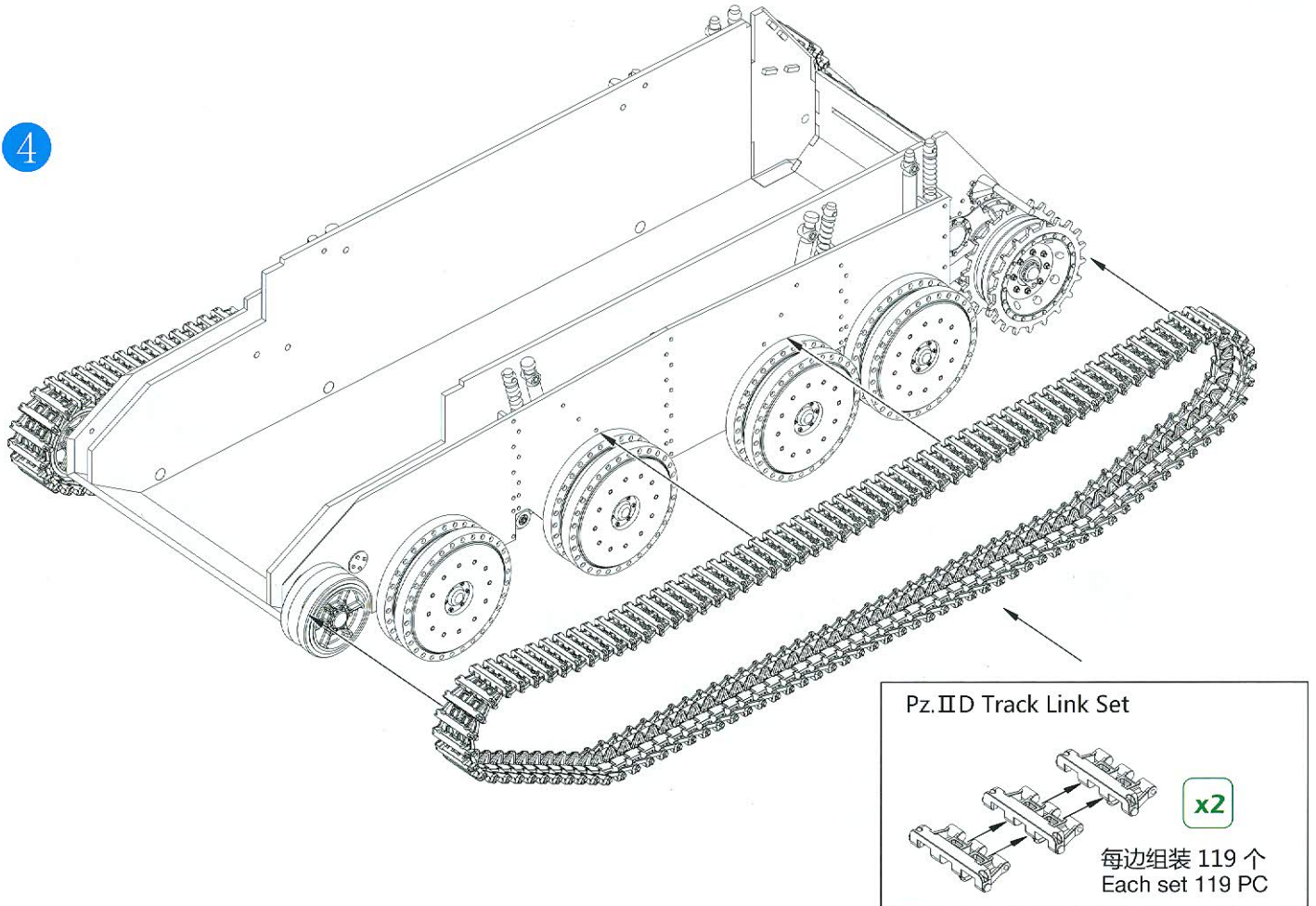
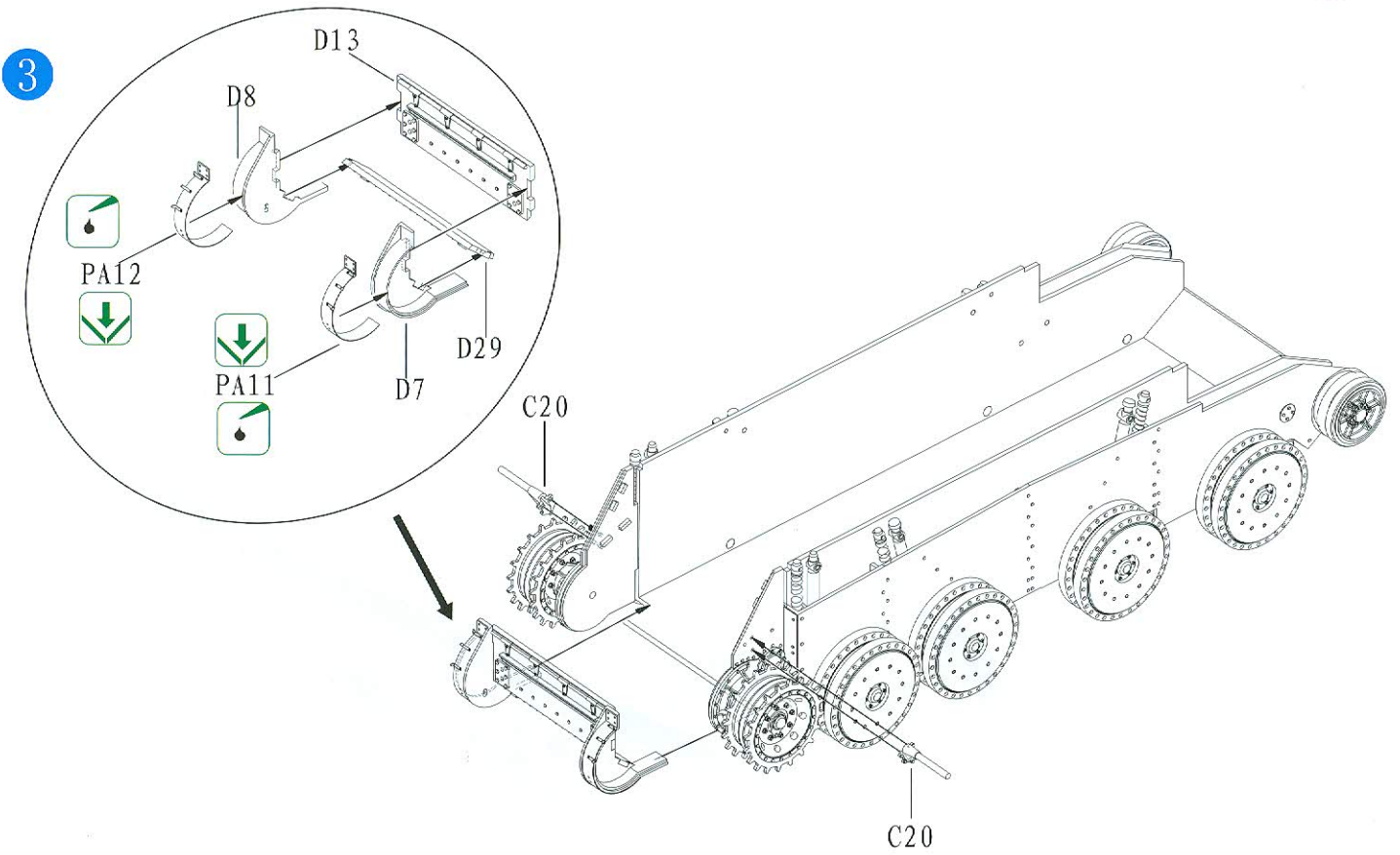
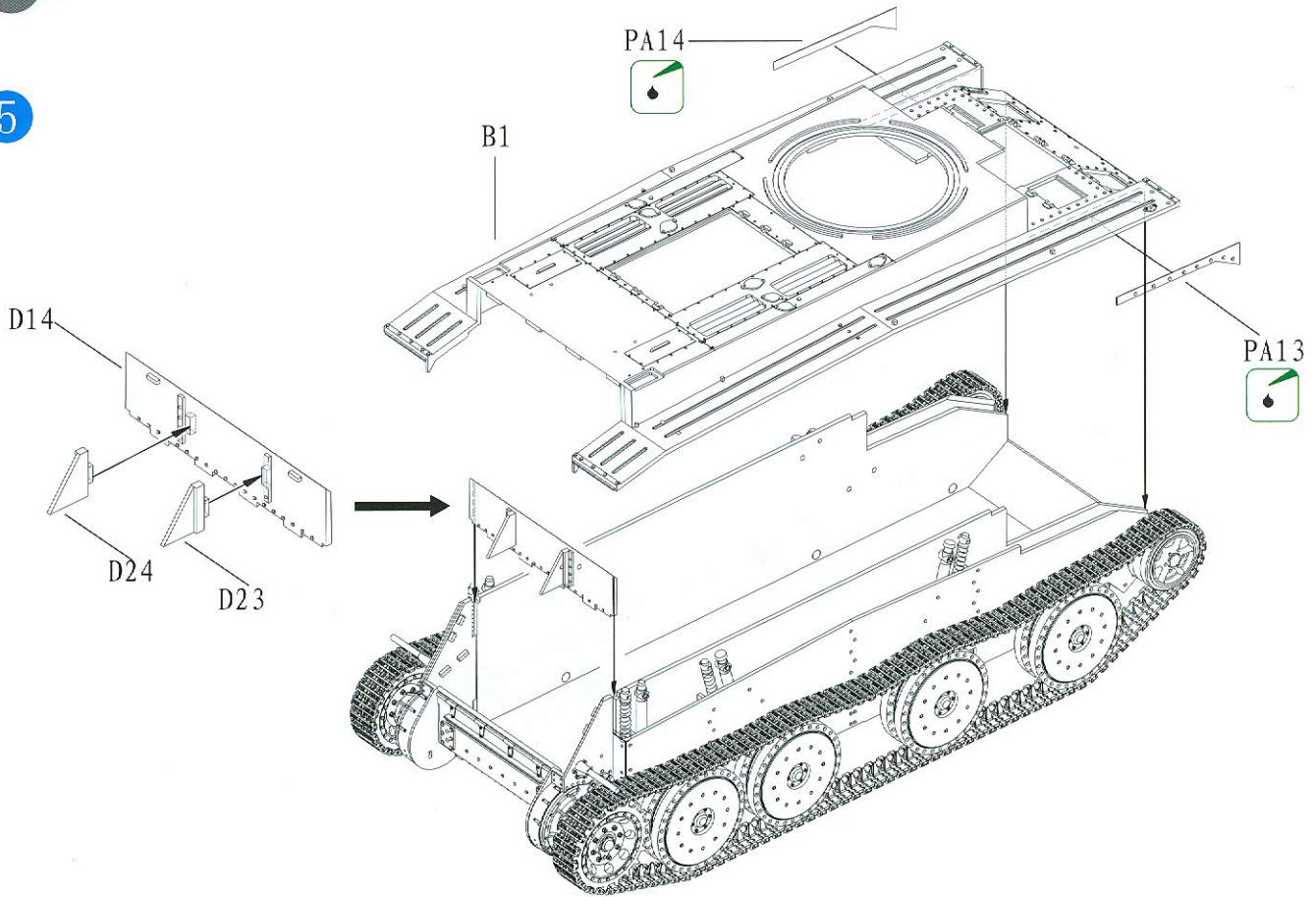
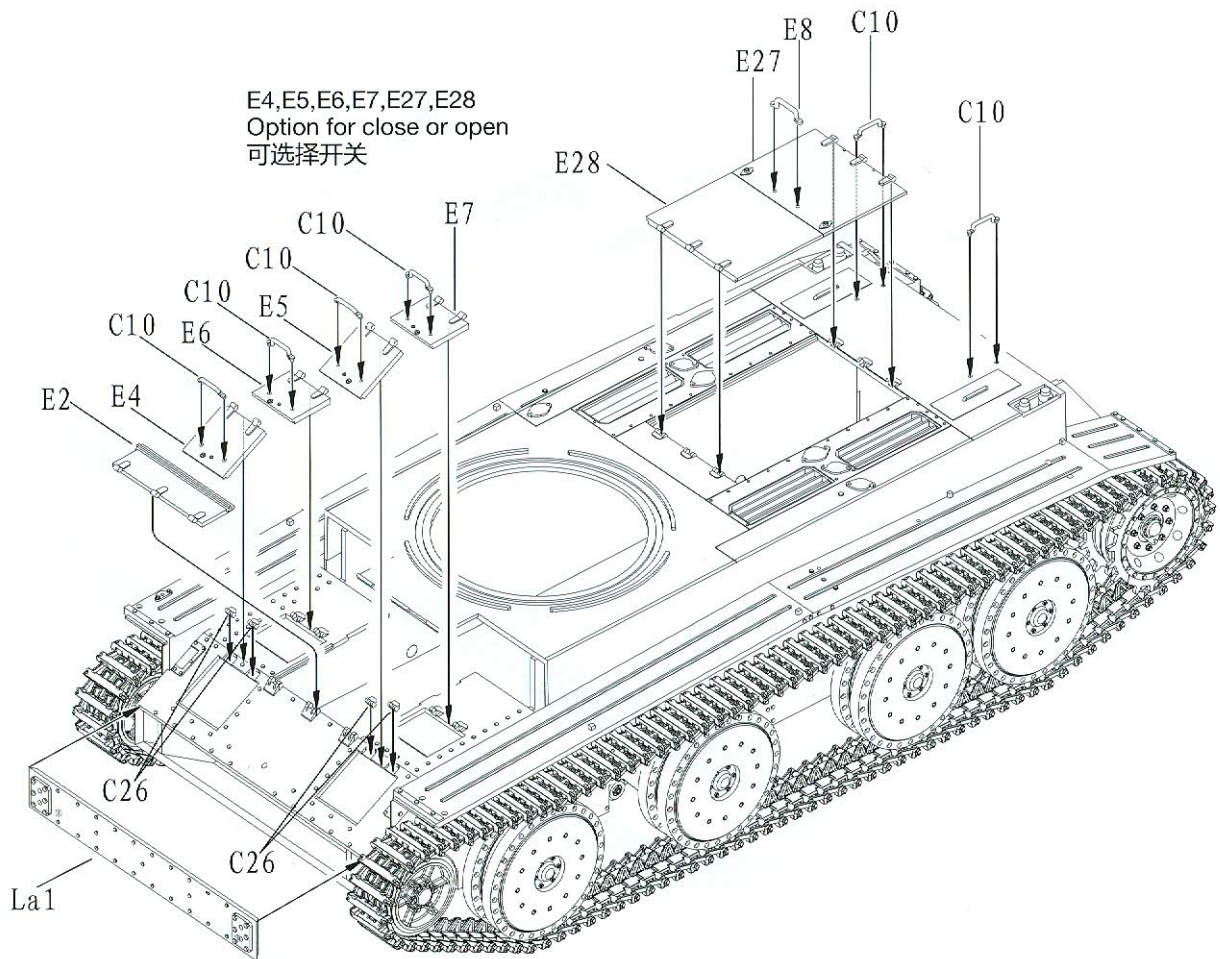


ILLUSTRATION 图示说明:

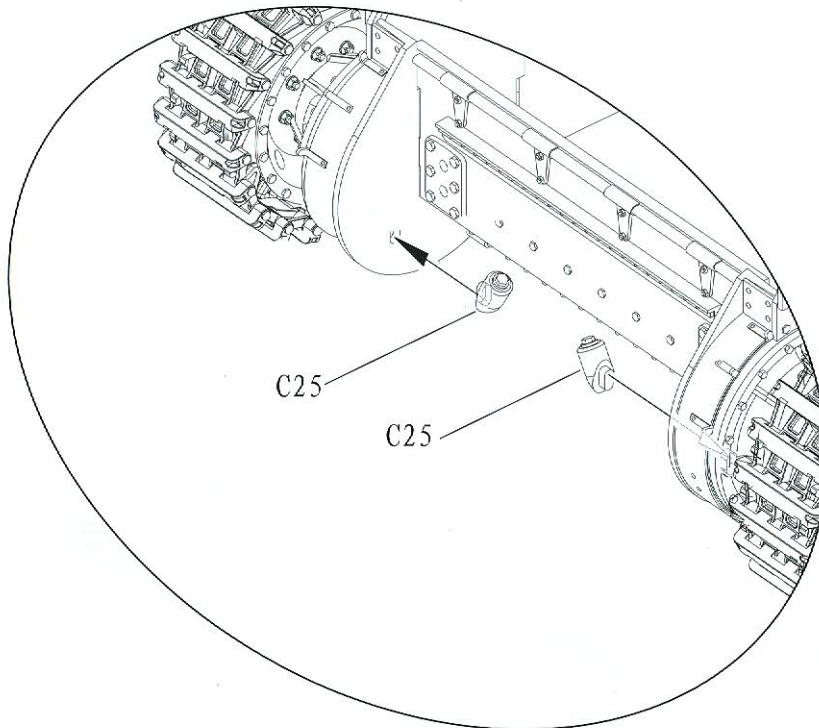
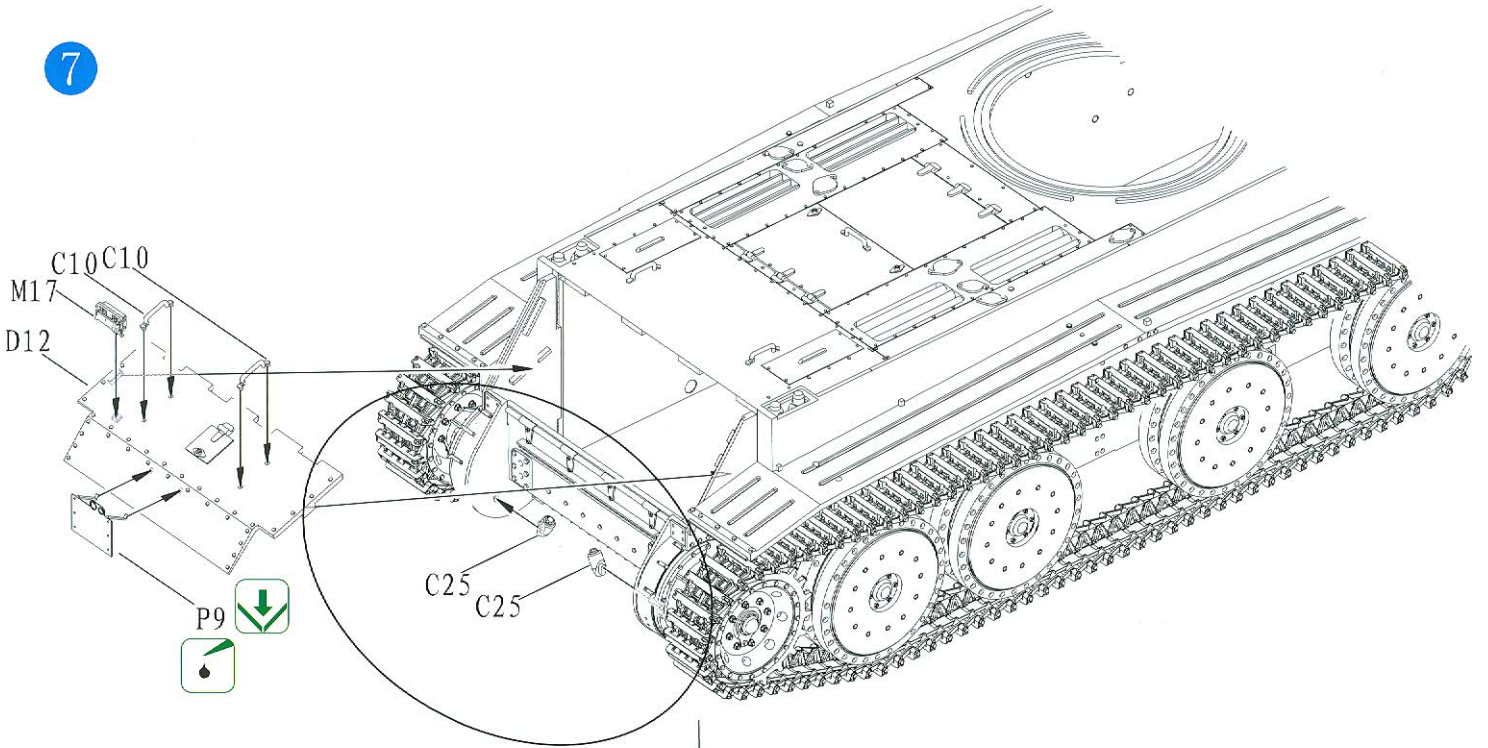
5



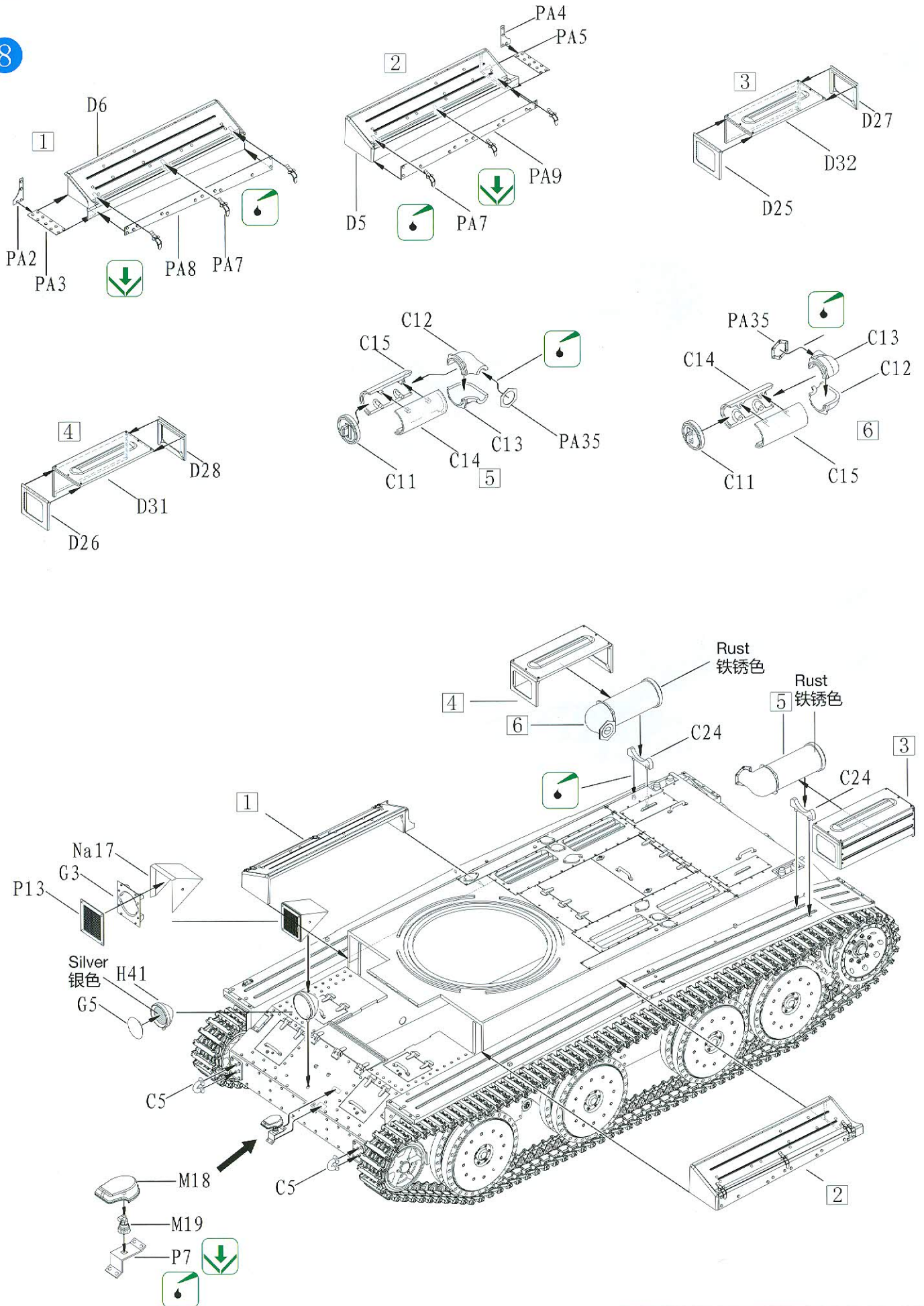
6

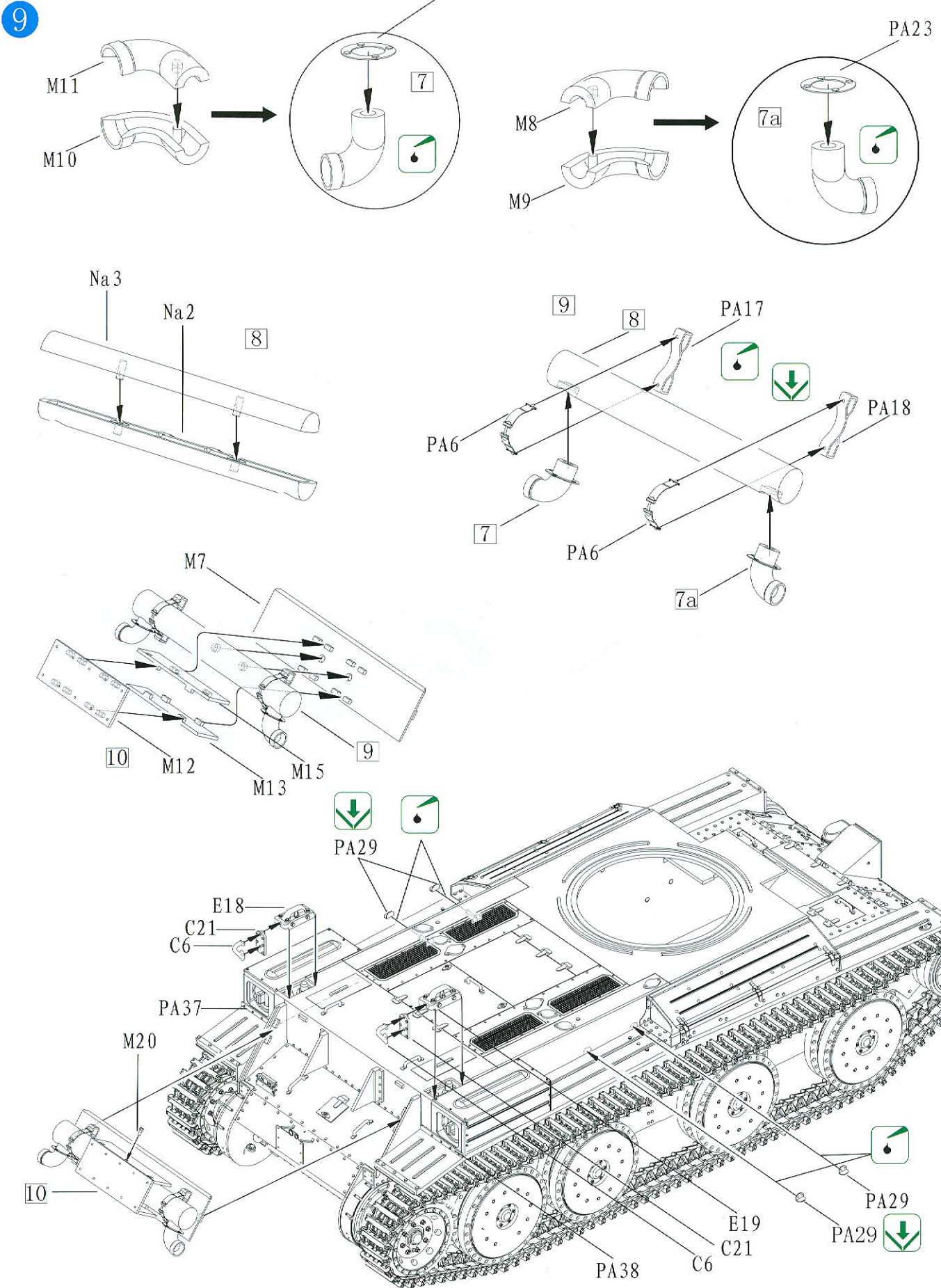


7

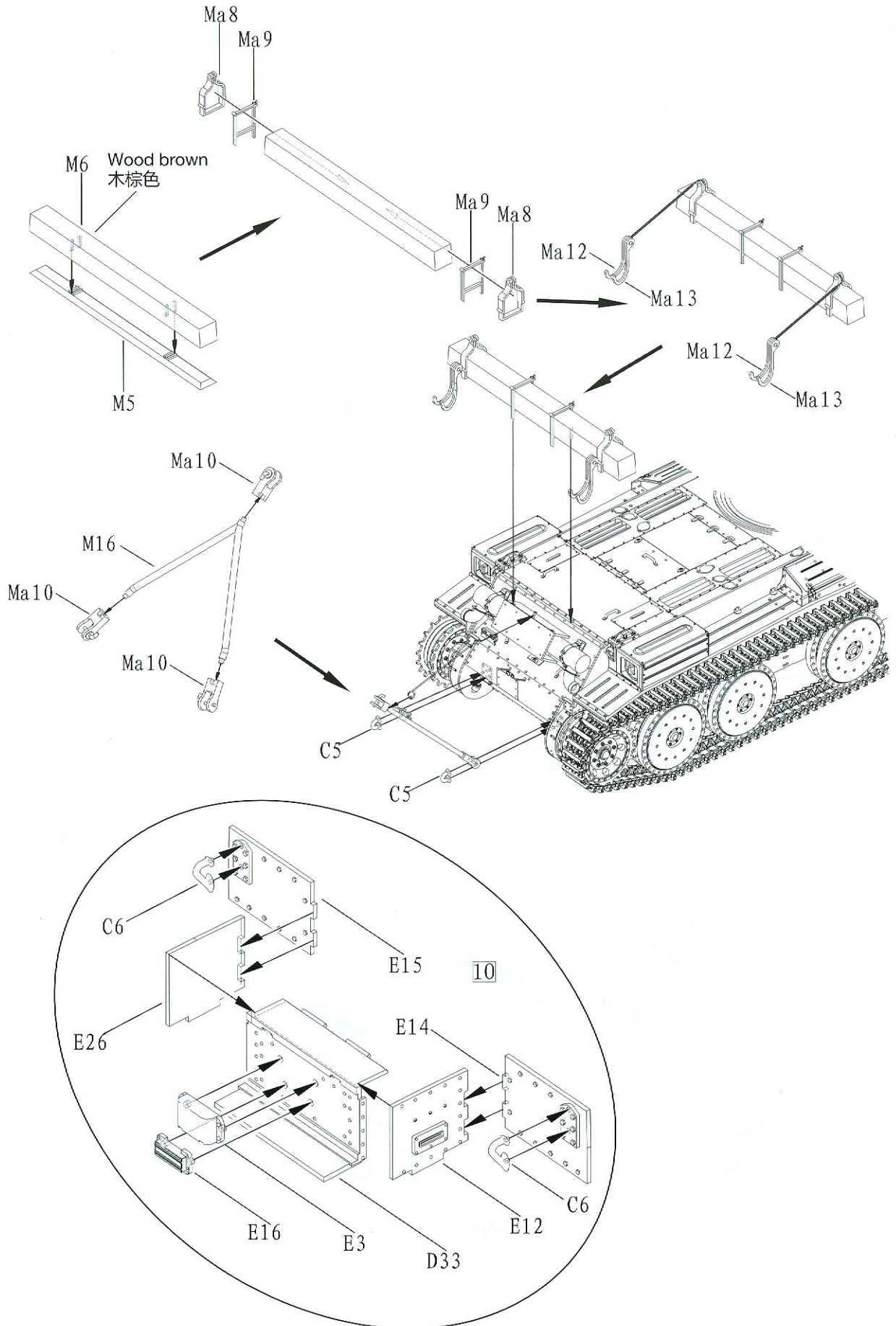


8

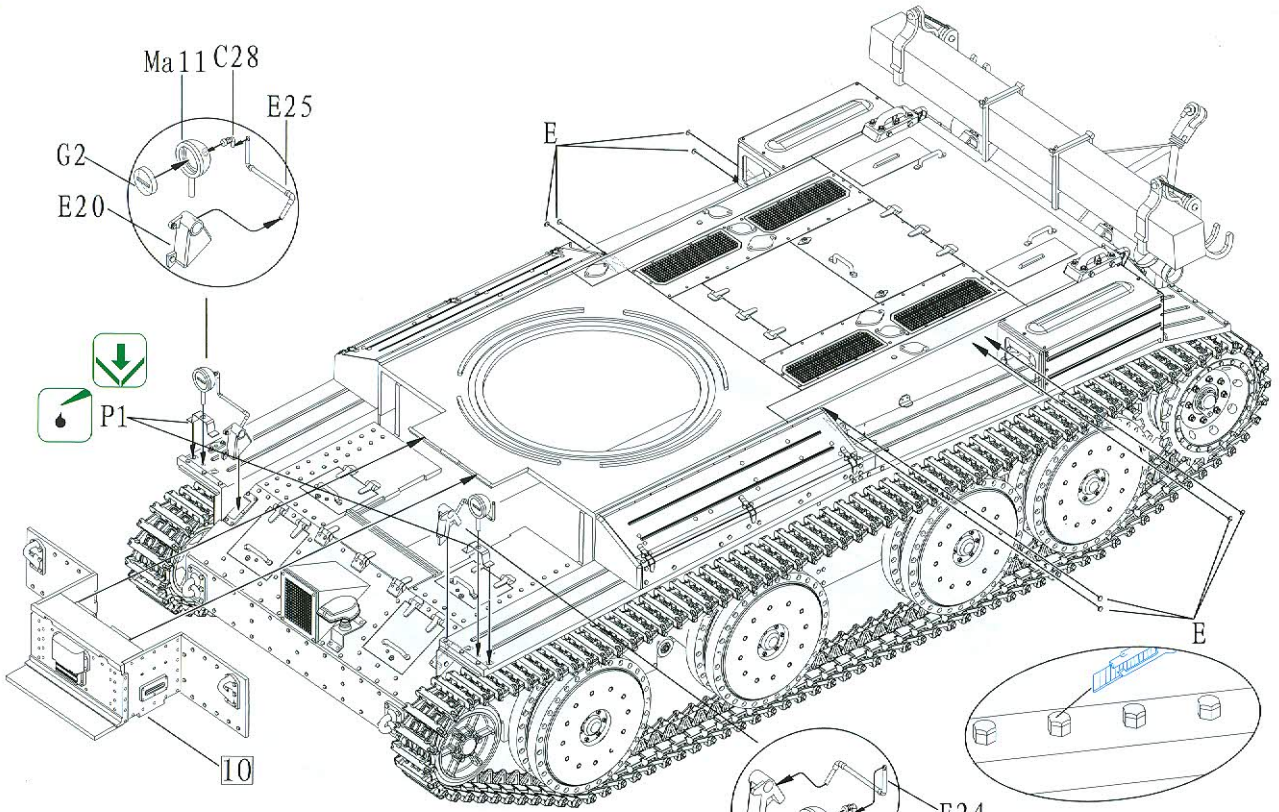




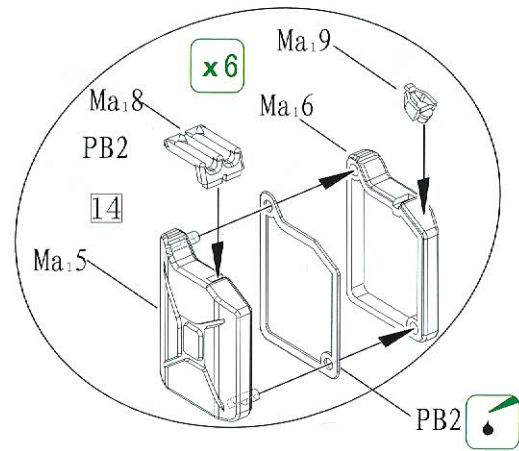
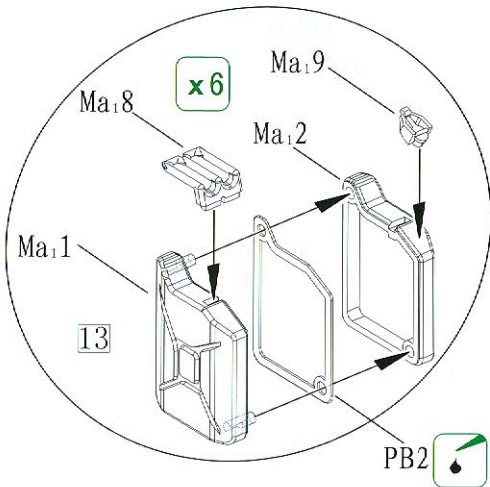
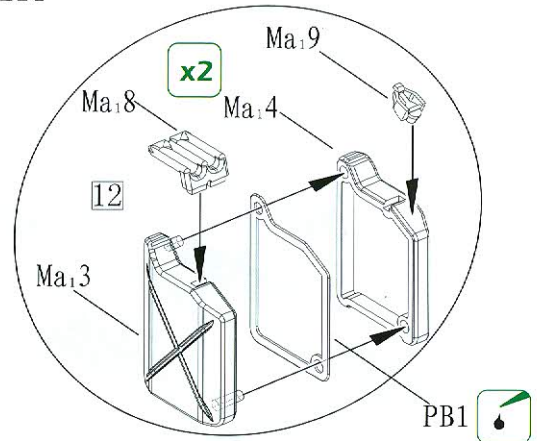
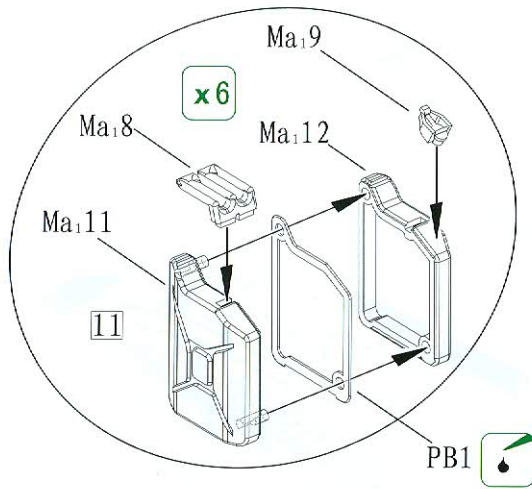
10



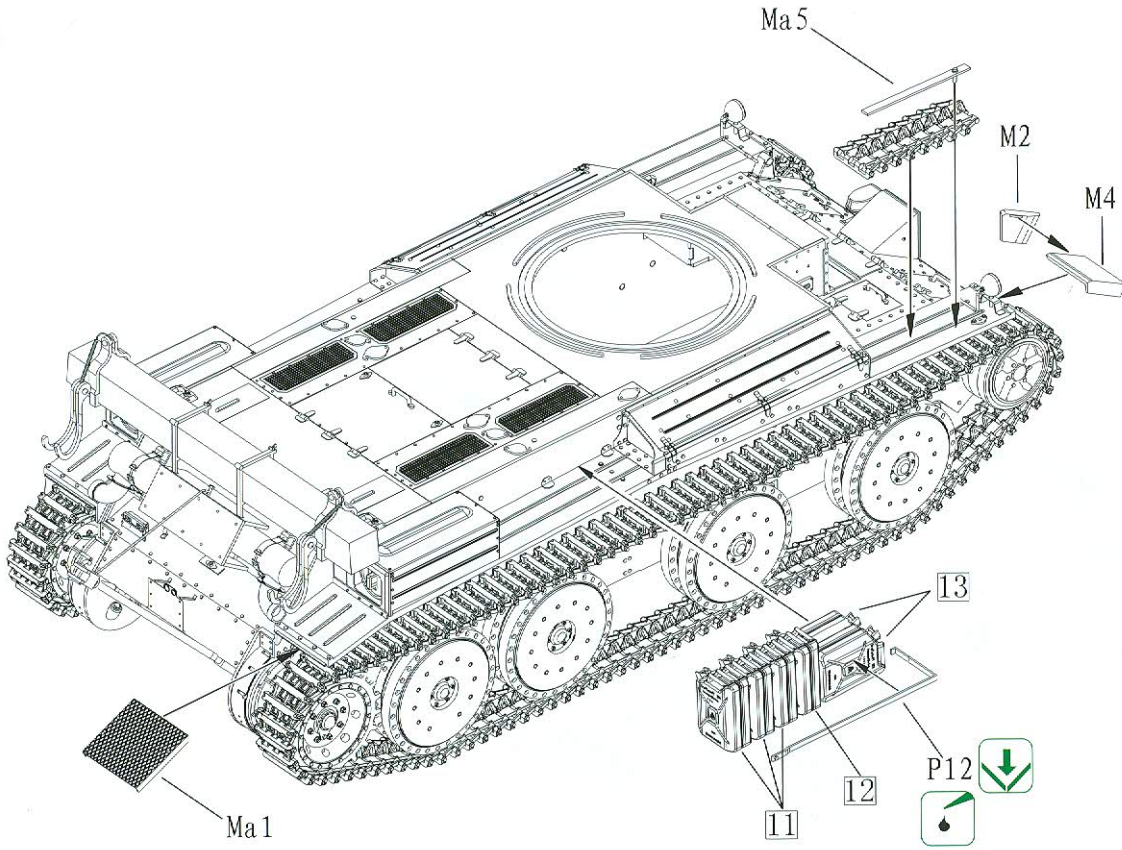
11



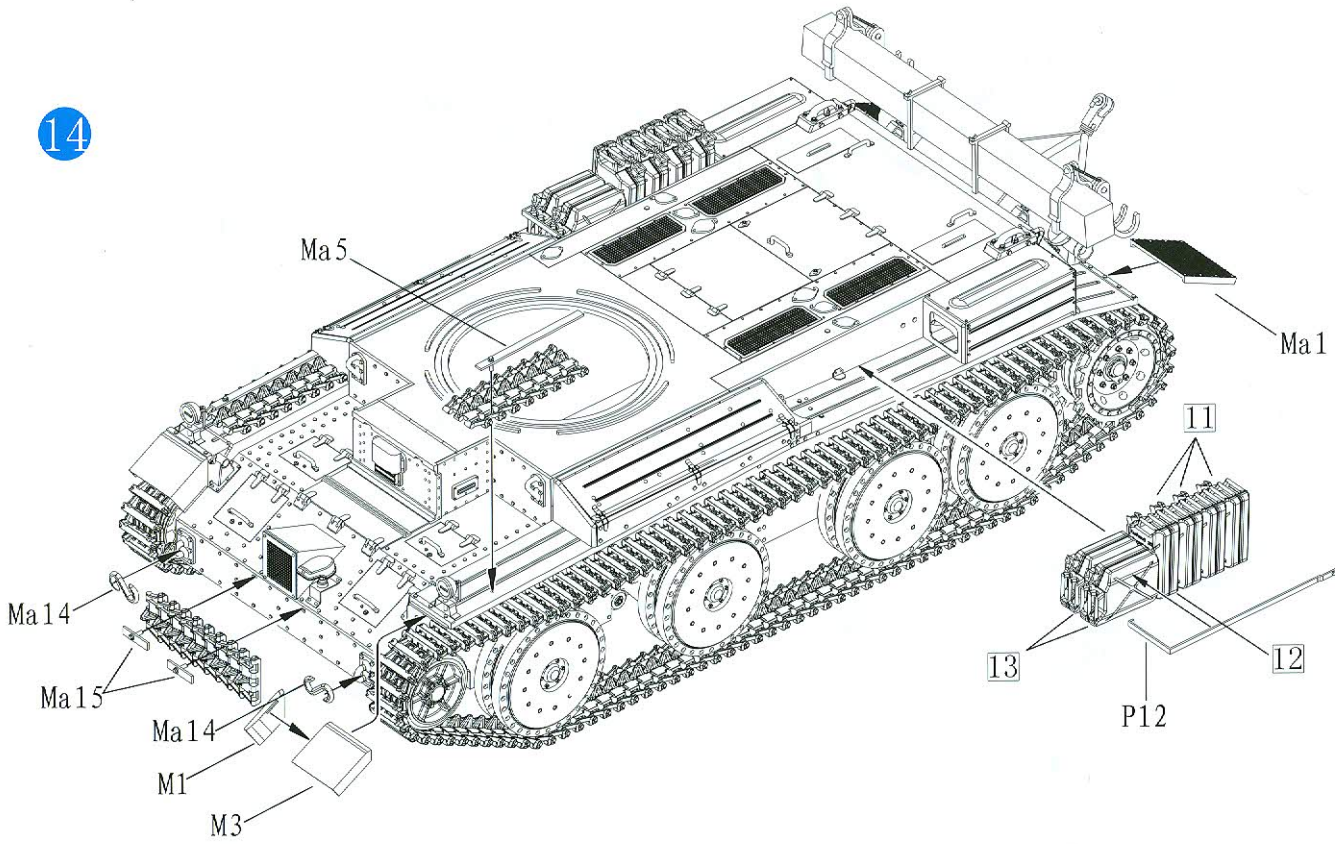
12

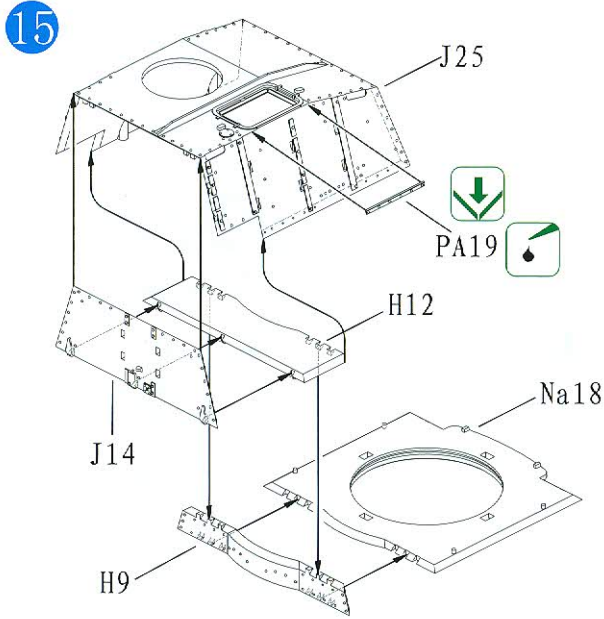


13

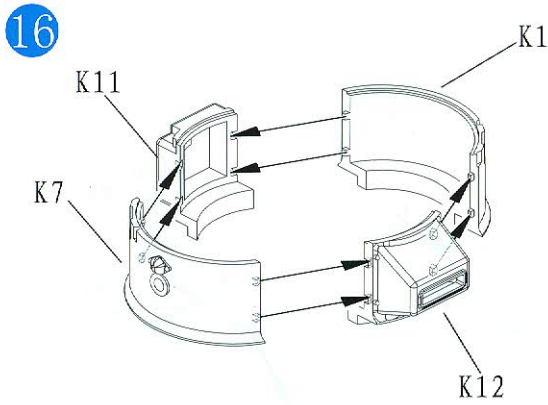
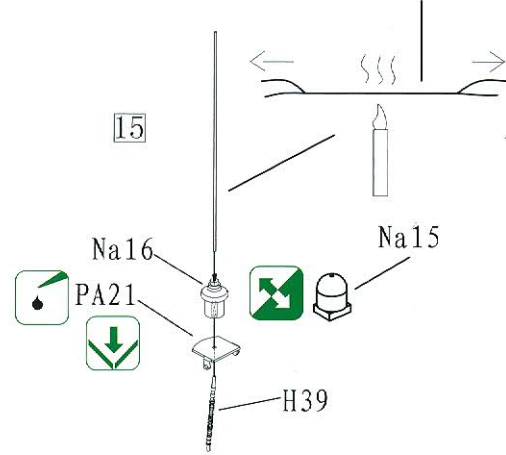


14





Caution: make the antenna by plastic frame channel with the heat of fire
 注明: 制作天线用流道加热拉丝



Option for close or open
 可选择开关

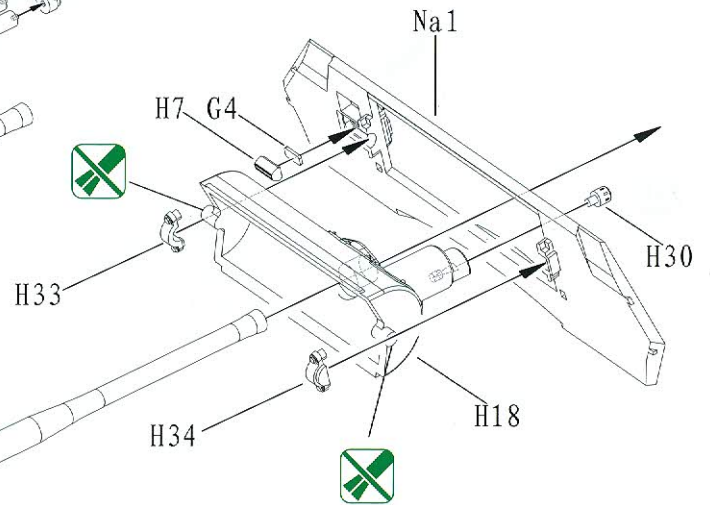
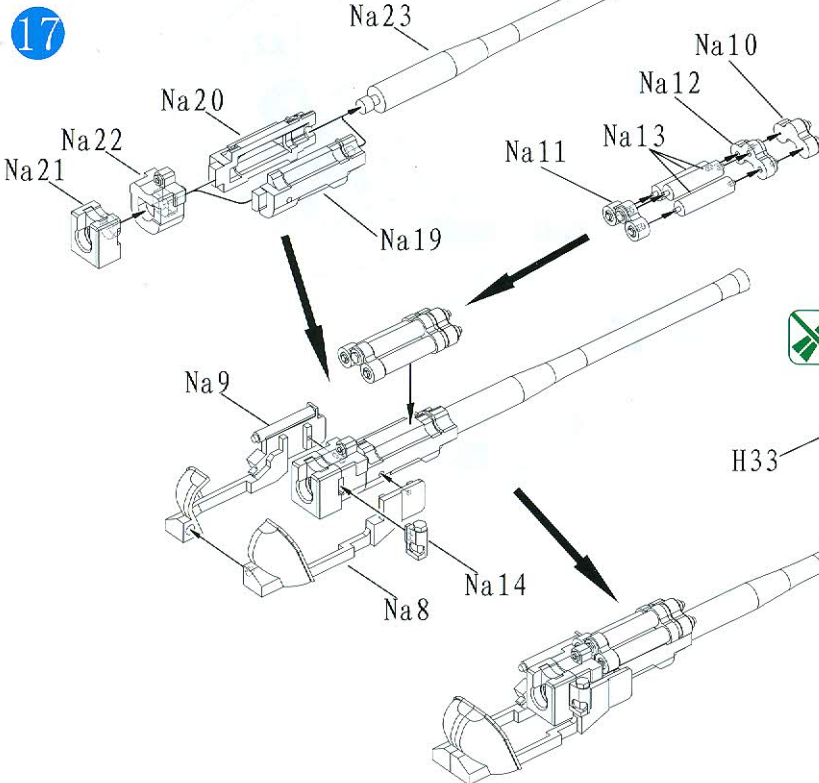
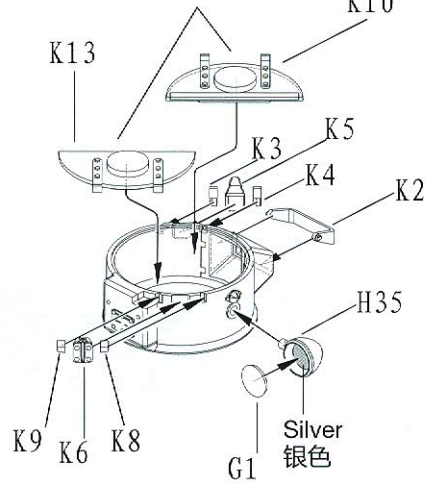
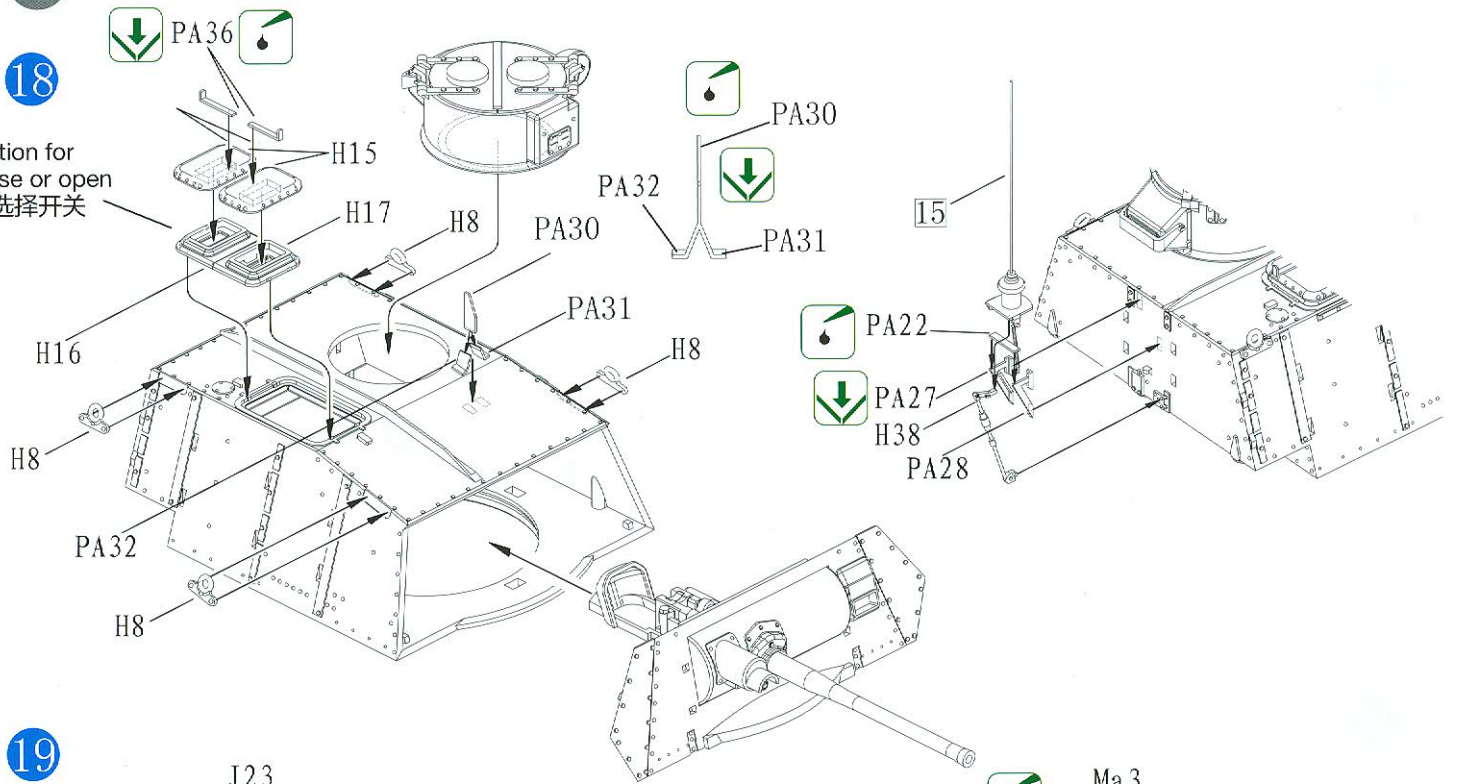


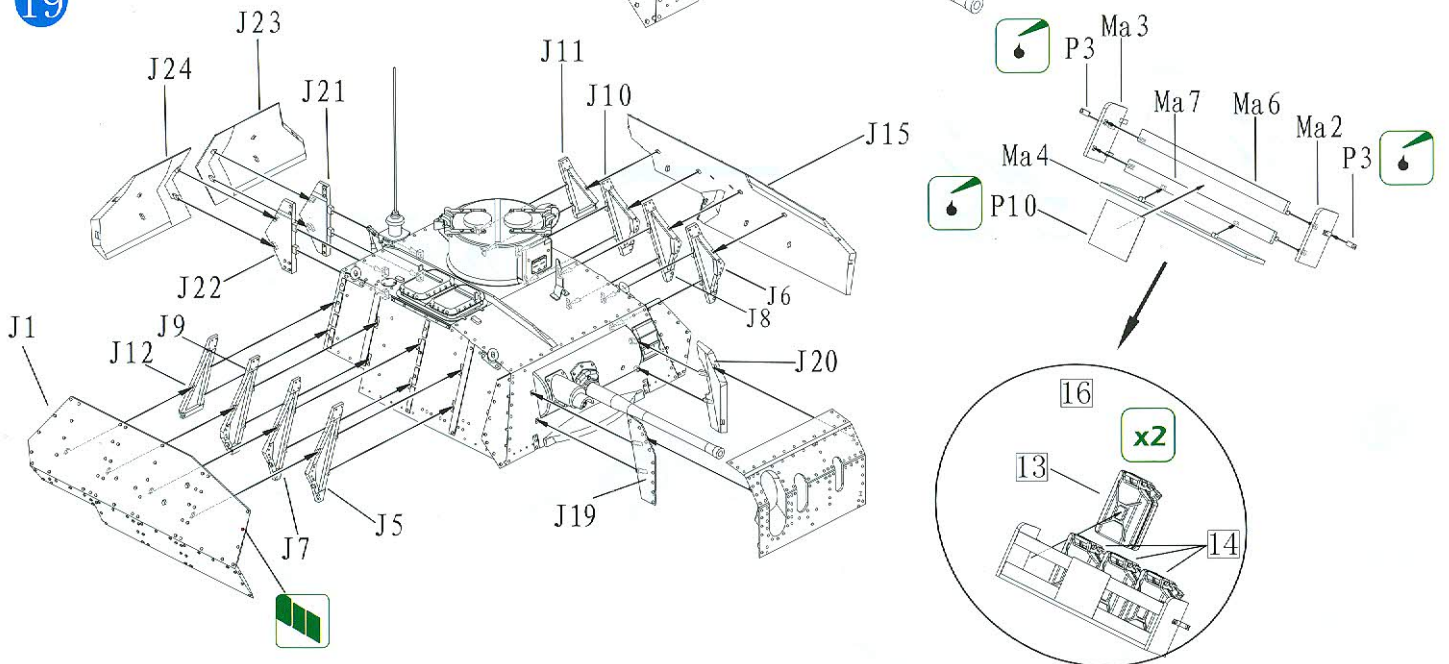
ILLUSTRATION 图示说明:

18

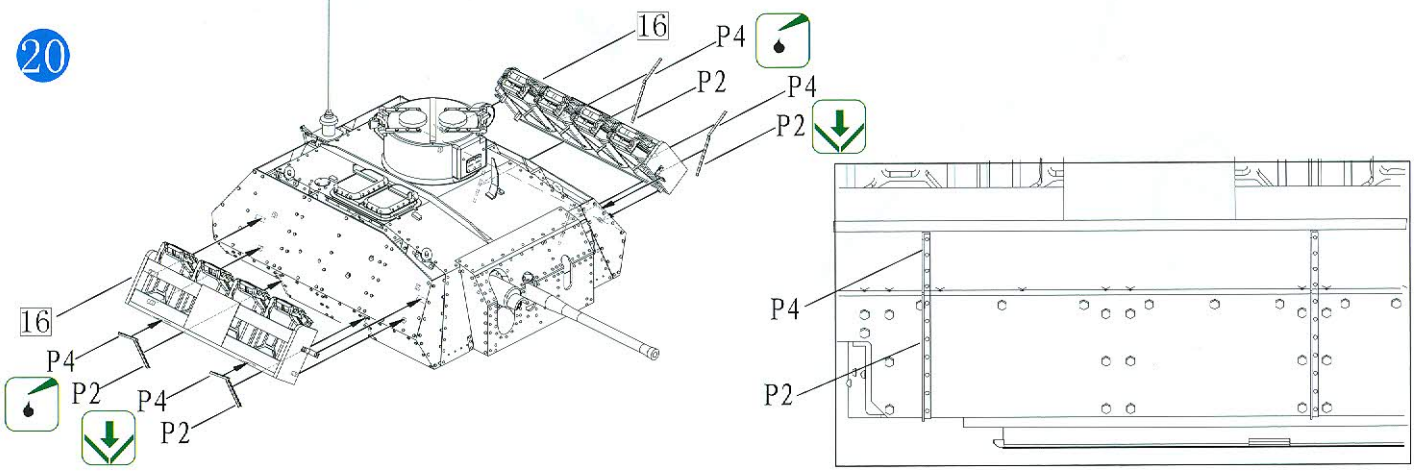
Option for close or open
可选择开关

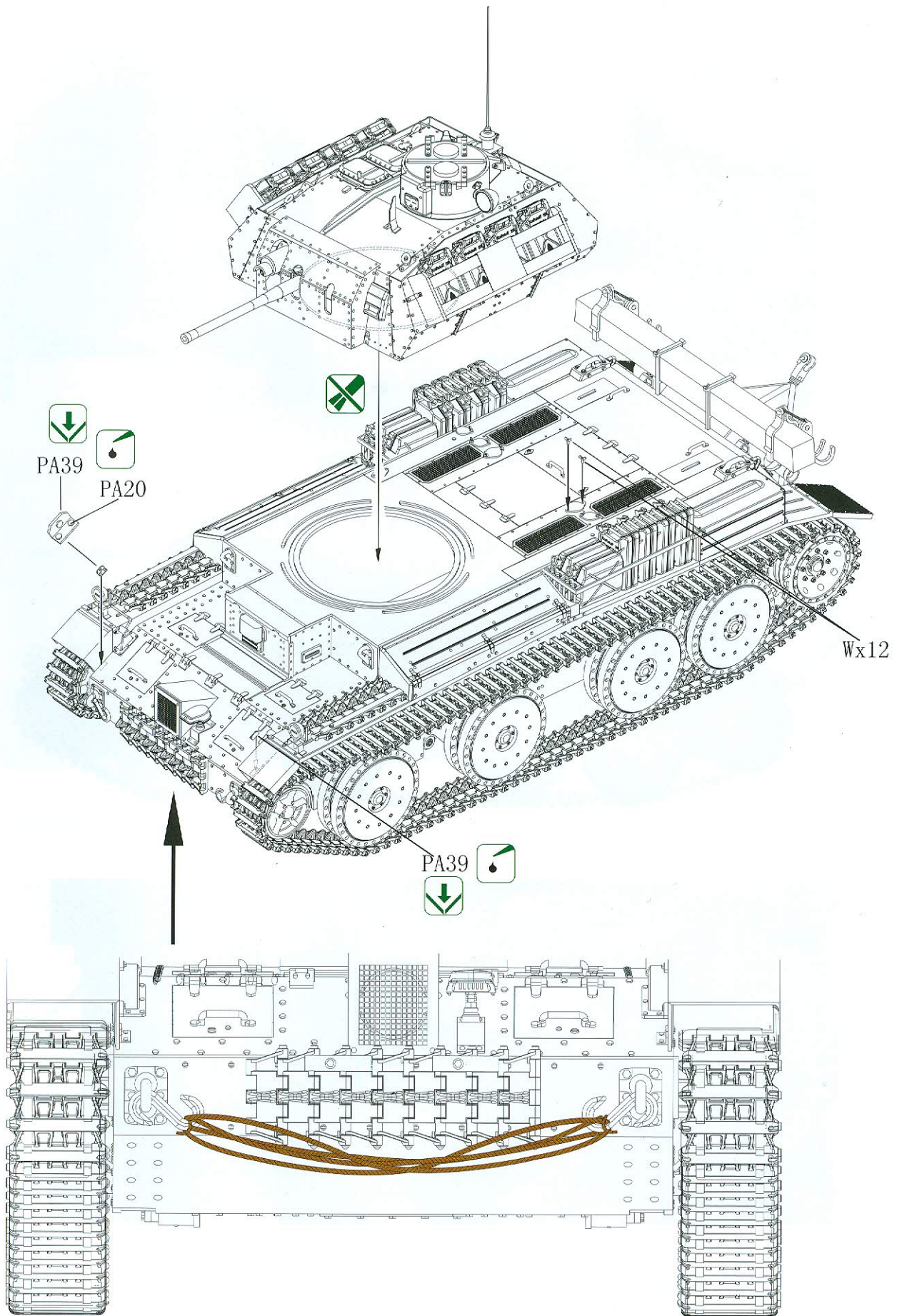


19



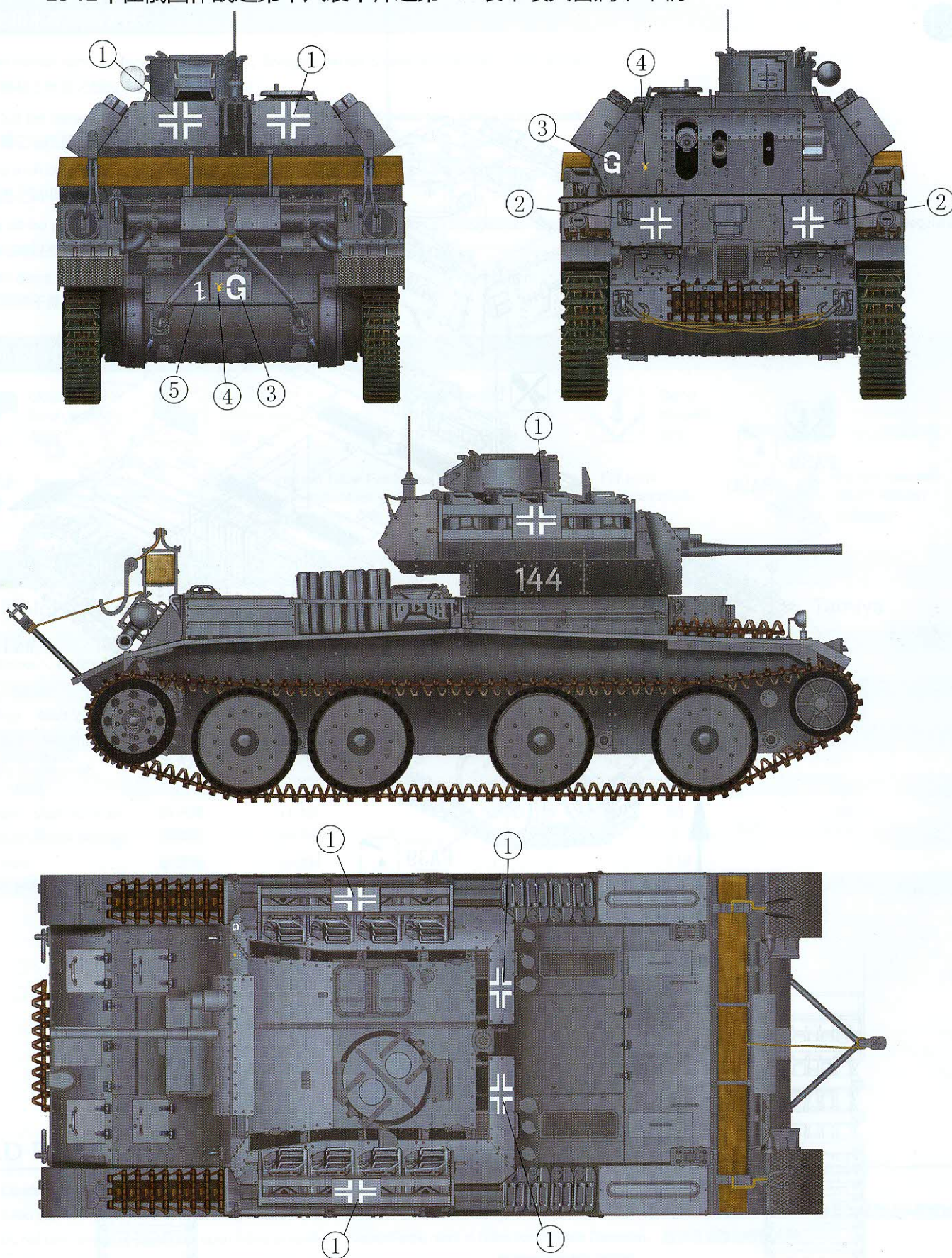
20





DECAL & COLOUR GUIDE 水贴及涂色指示:

Marking: Pz. Abt. (Flamm)100,18th Pz. Division, Russia Winter, 1941.
1941年在俄国作战之第十八装甲师之第100装甲喷火营属下车辆。



Camouflage Scheme : Overall German Gray
迷彩颜色 : 全车涂德国灰