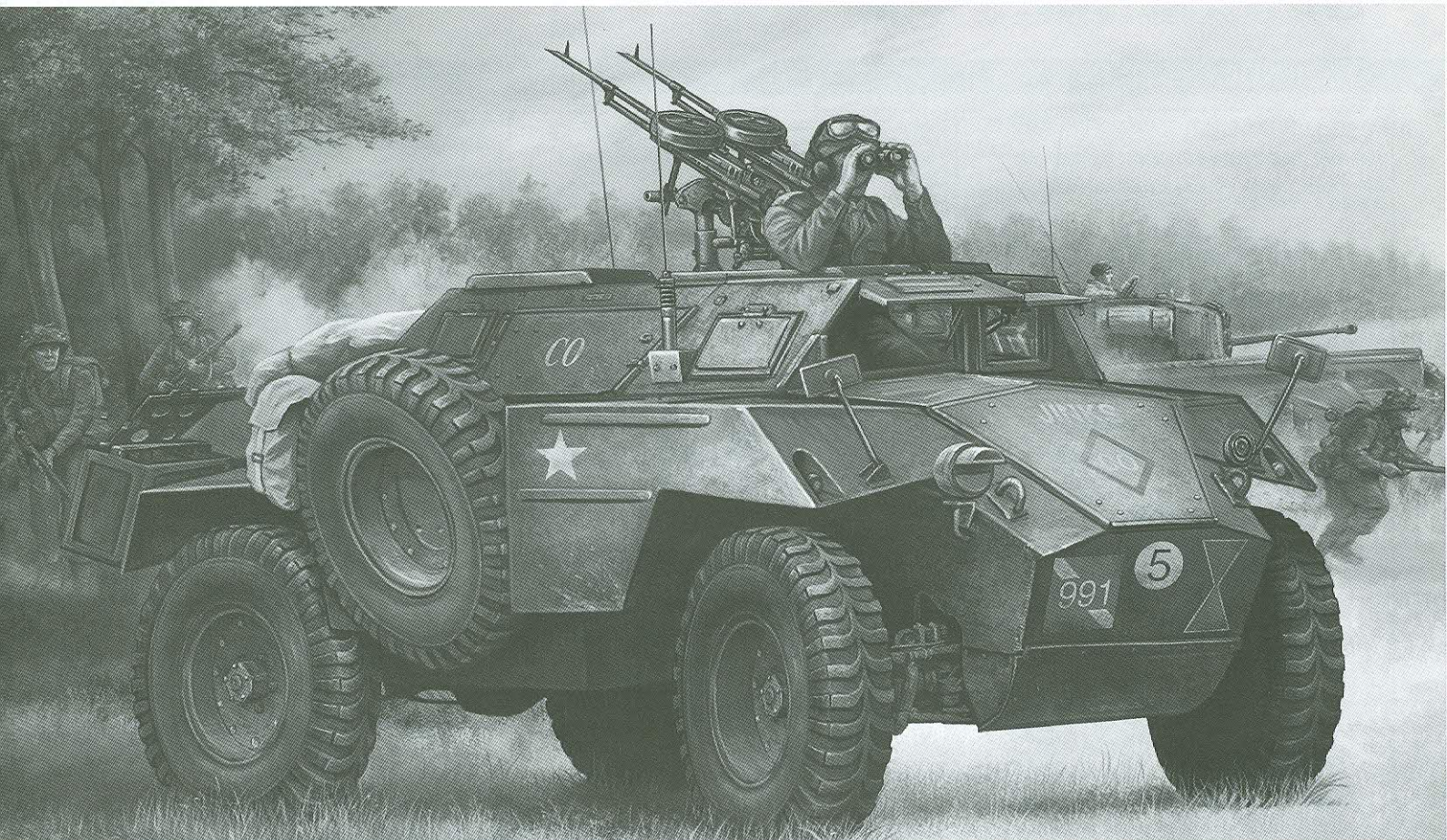




HUMBER SCOUT CAR MK. I W/TWIN K-GUN (D-DAY)

英軍‘亨伯’偵測車MK. I 裝備空軍K-GUN (D-DAY型)

Bronco Models



The role of the Daimler Scout Car was expanded 1942-43 to include Scouting, Liaison and Forward Reconnaissance, and so the production of the little vehicle could not keep pace with the increased demand. Humber were asked to build Scout Cars to fill the need, but instead of copying the Daimler, produced their own slightly larger vehicle using many components already in production. The result was the Humber Scout Car MkI, which appeared in early 1943.

The Humber Scout Car MkI was powered by a 87 bhp Rootes 6-cylinder engine, which gave a top speed of 104 km/h on road, and a range of 320 kilometers. Armour was a maximum of 14mm and the combat weight was 3,390kg. It was normally armed with single, or twin, .303 Bren Light Machine Gun, on a PLM remote mounting on the roof of the car. A No19 Radio set was used for communication, the Humber usually carried a crew of 3 men including a radio operator.

The Humber was highly prized by its crews, it was fast, reliable and it had much better weather protection than the Daimler. It was mostly issued to Tank and Armoured Car regiments of the Royal Armoured Corps, but was also used by Infantry, Signals,

Engineers and Artillery units. A total of 1,698 Humber SC MkI's were built before factories switched to the MkII version early in 1944. The Humber Scout Car MkII had a modified gearbox, but was otherwise identical, a total of 2,404 were built before the end of the war. Humber were in widespread use by British & Commonwealth armies at the time of the D-Day landings, smaller numbers served in Italy, Greece and Palestine. The British Army retired its last Humber in the 1960's.

In den Jahren 1942-42 wurde das Aufgabengebiet des Daimler Spähwagens auf Verbindungs- und Gefechtsfeldaufklärungsmissionen ausgeweitet. Um dem gestiegenen Bedarf gerecht zu werden, beauftragte man die Firma Humber.

Anstelle eines Nachbaus des Daimlers entwickelte man dort einen eigenen, etwas größeren Entwurf. Mit vielen bereits verfügbaren Teilen hergestellt, entstand Anfang 1943 der Humber Mk I Spähwagen.

Der Rootes 6-Zylinder Motor mit 87 PS erlaubte eine Höchstgeschwindigkeit von 104 km/h auf der Strasse, die Reichweite betrug 320 km. Mit einer max. Panzerung von 14mm kam das Fahrzeug auf ein Gefechtsgewicht von 3390 kg. Die normale Bewaffnung bestand aus einem einzelnen (oder doppelten) leichten 0.303 Bren MG. Als Kommunikationsmittel diente ein No. 19 Funkgerät, der Funker war ein Teil der 3-Mann Besatzung.

Der Humber war bei der Truppe sehr beliebt, er war schnell, zuverlässig und bot einen besseren Schutz vor der Witterung als der Daimler. Hauptsächlich den Panzereinheiten zugeteilt, war er jedoch auch bei den Infanterie-, Fernmelde-, Pionier- und Artillerietruppen zu finden.

Nach der Produktion von 1698 Humber SC Mk I begann man Anfang 1944 mit der Herstellung des Mk II. Ansonsten identisch, hatte dieser ein verbessertes Getriebe und wurde bis Kriegsende 2404 Mal gebaut.

Er war unter britischen und Commonwealth Truppen ab dem D-Day weit verbreitet, auch dienten kleinere Stückzahlen in Italien, Griechenland und Palästina. Erst in den 1960er Jahren wurden die letzten Humber ausgemustert.

'亨伯'偵測車正式於1943年投入服務，雖然太遲未能參與北非戰役，但卻廣泛使用於稍後之義大利及西歐戰線。由於此車性能超卓為英軍各不同部隊如裝甲兵、砲兵、工程兵等爭相採用。除英國本身外當時還供應其他盟國如加拿大及波蘭等部隊使用。由於在D-day登陸日時擔心遭受德國空軍攻擊，所以部份此車被改裝使用空軍制式雙聯裝K-gun作自衛武器。

1945年中歐戰結束後，'亨伯'偵測車也正式停止生產。隨後此車部份遭解體或出售至丹麥、法國、荷蘭、比利時及其他英聯邦國家如馬來西亞等部隊使用。在上世紀50年代末中南半島之戰中，此車也曾替法軍立下不少汗馬功勞。直至現在在各國之軍事博物館中還可見到此車之展品保存得非常好狀態。

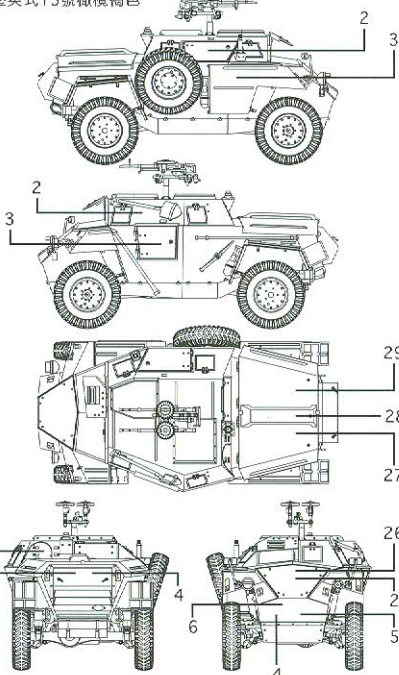
ILLUSTRATION 圖示說明：

CORRECT METHOD FOR APPLYING DECALS 正確使用水貼紙方法：

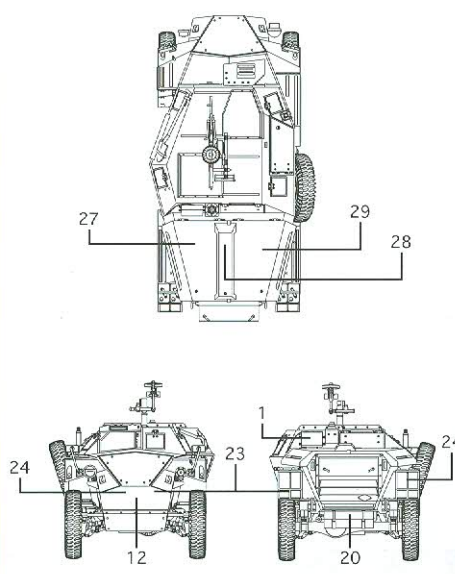
1. Clean model parts surface with wet cloth.
將需要貼上水貼之部位表面擦乾淨。
2. Cut out the decal parts and dip them in cold water for 15~20 seconds.
將所需之貼紙剪下泡在清水裏約15至20秒。
3. Place it on correct position of the model kit.
將濕透之貼紙取出置放於正確之位置旁。
4. Slide off the decal from the base paper on to the model kit surface with a cotton stick.
用棉花棒輕推貼紙表面使其從底紙滑出至模型表面之正確位置。
5. When decal get dry then complete.
待其自然乾透後即完成。

COLOR SUGGESTION 塗裝指引：

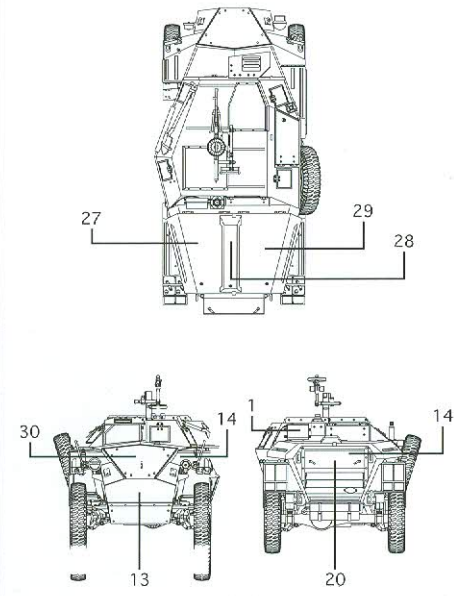
Option 1 - 31st Tank Brigade during Operation 'Epsom' June 1944
1944年6月在諾曼第地區作戰之英軍第31坦克旅屬下車輛
Camouflage Scheme - Overall SCC British No.15 Olive Drab
全車塗英式15號橄欖褐色



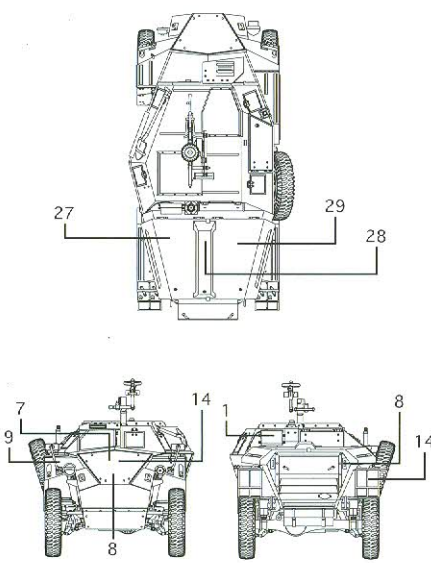
Option 2 - 30th Armoured Brigade, 79th Armoured Division, Caen, July 1944
1944年7月在法國諾曼第加恩地區作戰之英軍第79裝甲師屬下第30裝甲旅使用車輛
Camouflage Scheme - Overall SCC British No.15 Olive Drab
全車塗英式15號橄欖褐色



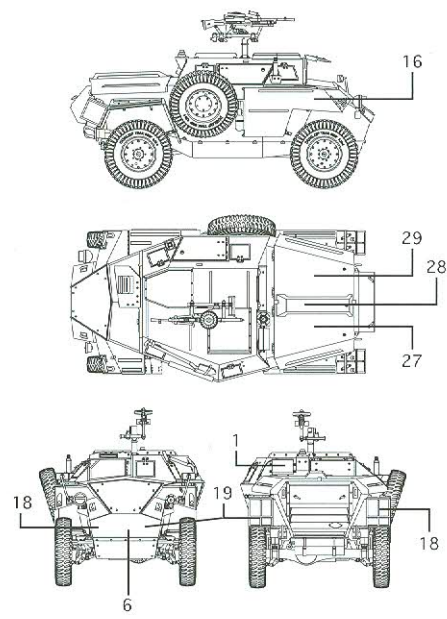
Option 3 - Polish 10th Dragoons, N.W.Europe 1944
1944年在西北歐作戰之波蘭第10騎兵團所屬車輛
Camouflage Scheme - Overall SCC British No.15 Olive Drab
全車塗英式15號橄欖褐色



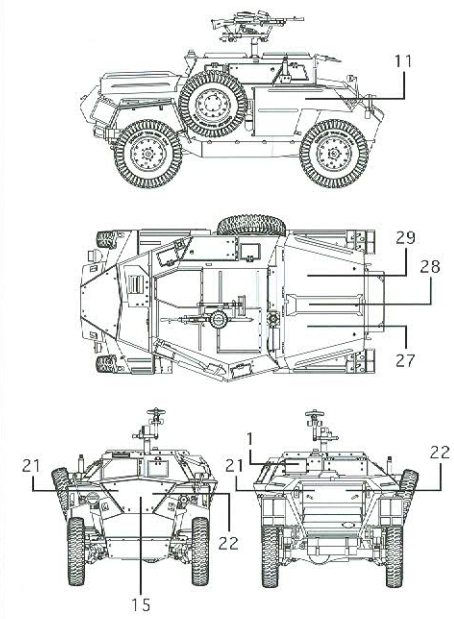
Option 4 - Polish 1st Signal Battalion's HQ Signal Aquadron, N.W.Europe 1944
1944年在西北歐作戰之波蘭第1信號營總部下之信號中隊所屬車輛
Camouflage Scheme - Overall SCC British No.15 Olive Drab
全車塗英式15號橄欖褐色



Option 5 - HQ 34th Army Tank Brigade, N.W.Europe, 1944-45
1944-45年在西北歐作戰之英國陸軍第34坦克旅屬下車輛
Camouflage Scheme - Overall SCC British No.15 Olive Drab
全車塗英式15號橄欖褐色



Option 6 - 59th Heavy Regiment, Royal Artillery, Dreierwalde, April 1945
1945年在德國作戰之第59皇家重炮兵團屬下車輛
Camouflage Scheme - Overall SCC British No.15 Olive Drab
全車塗英式15號橄欖褐色

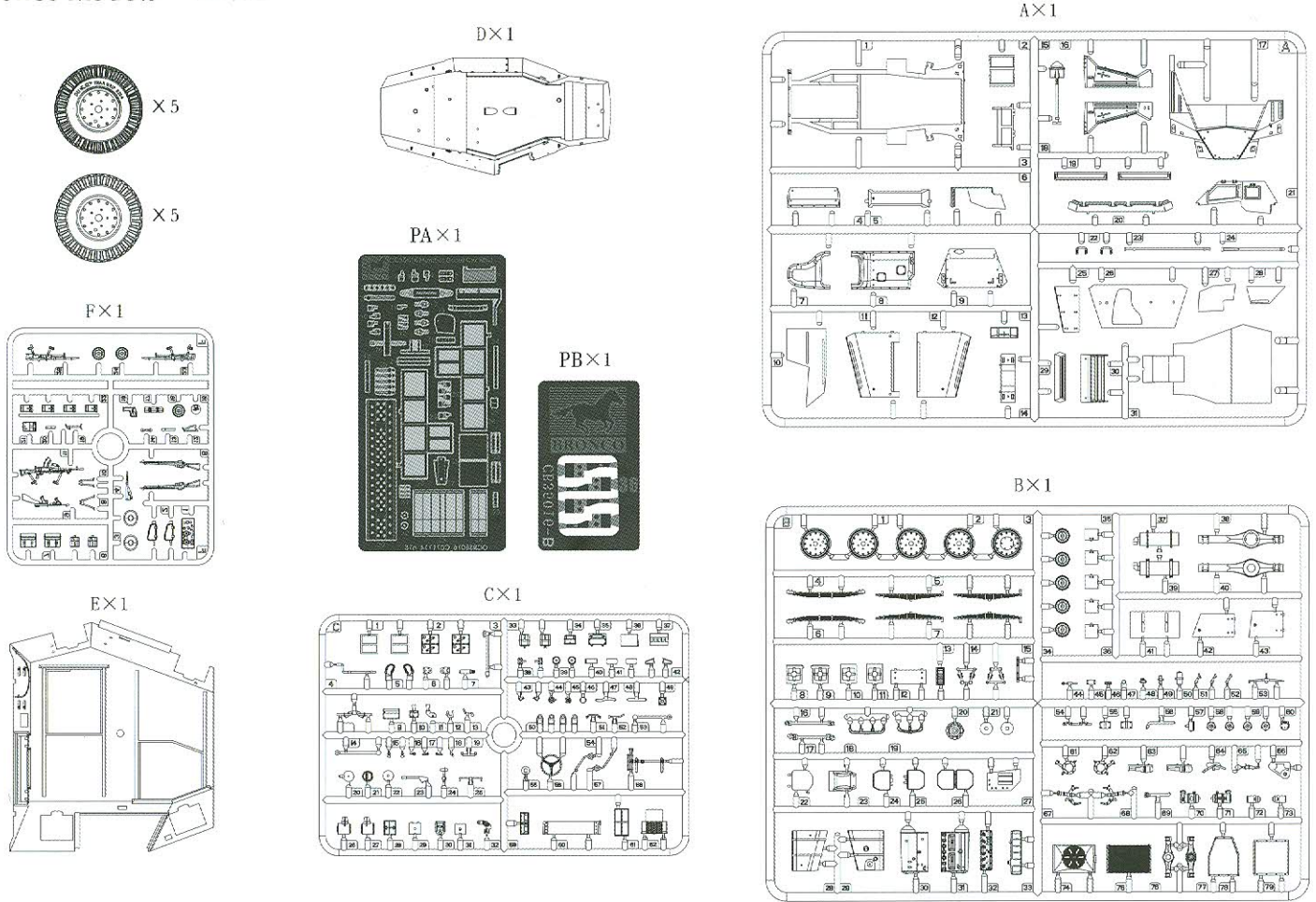




Bronco Models

Made in China
中國製造

PARTS LIST 零件展示表:



ICON INSTRUCTION 圖標說明:



Open Hole
鑽孔



Remove
切除



2 Sets needed
同樣的製作二組



Bend
曲折



Optional
可以選擇採用



Apply Decal
貼上水貼紙



Instant Glue For Metal
瞬間接著劑, 金屬用



Fill Hole
把孔填平



Do not cement
不用粘合

COLOR SUGGESTION 塗裝指引:

Gunze Sangyo	Hobby Color	Gunze Sangyo	Hobby Color	Humbrol	Tamiya
Khaki Green	卡其綠	H-80	C-54	/	/
Red	紅色	H-3	C-3	19	X-7
Silver	銀	H-8	J-8	11	/
Flat White	消光白	H-11	C-62	34	XF-2
British Olive Drab No.15	英式橄欖褐	H-52	C-12	163	XF-58
Dark Green	深綠	H-36	C-17	/	XF-61
Tire Black	輪胎黑	H-77	C-137	85	XF-1
Steel	黑鐵	H-18	C-28	53	/
Semi-Gloss Black	半光黑色	/	C-82	/	/
Burnt Iron	燒鐵色	H-76	C-61	/	/
Wood Brown	木啡色	H-37	C-43	/	/
Field Green	田野綠	/	/	69 70% + 33 30%	/
Flat Black	消光黑	H-12	C-33	33	XF-1
Flesh	肌肉色	H-44	C-112	61	XF-15
Orange	橙色	H-14	C-59	18	X-6
Deep Bronze Green	深銅綠色	/	/	75 90% + 33 10%	/

READ BEFORE ASSEMBLING 組裝必讀:

- Carefully Study instruction before assembling. 組裝前請閱讀清楚製作指引。
- Keep plastic model glue and tools away from children. 膠水、油漆及工具勿讓小孩接觸。

- Do not use cement or paint near open flame or sparks. 膠水及油漆勿接觸火種。
- Do not work in closed room. 勿在密封地方製作模型。

ILLUSTRATION 圖示說明：

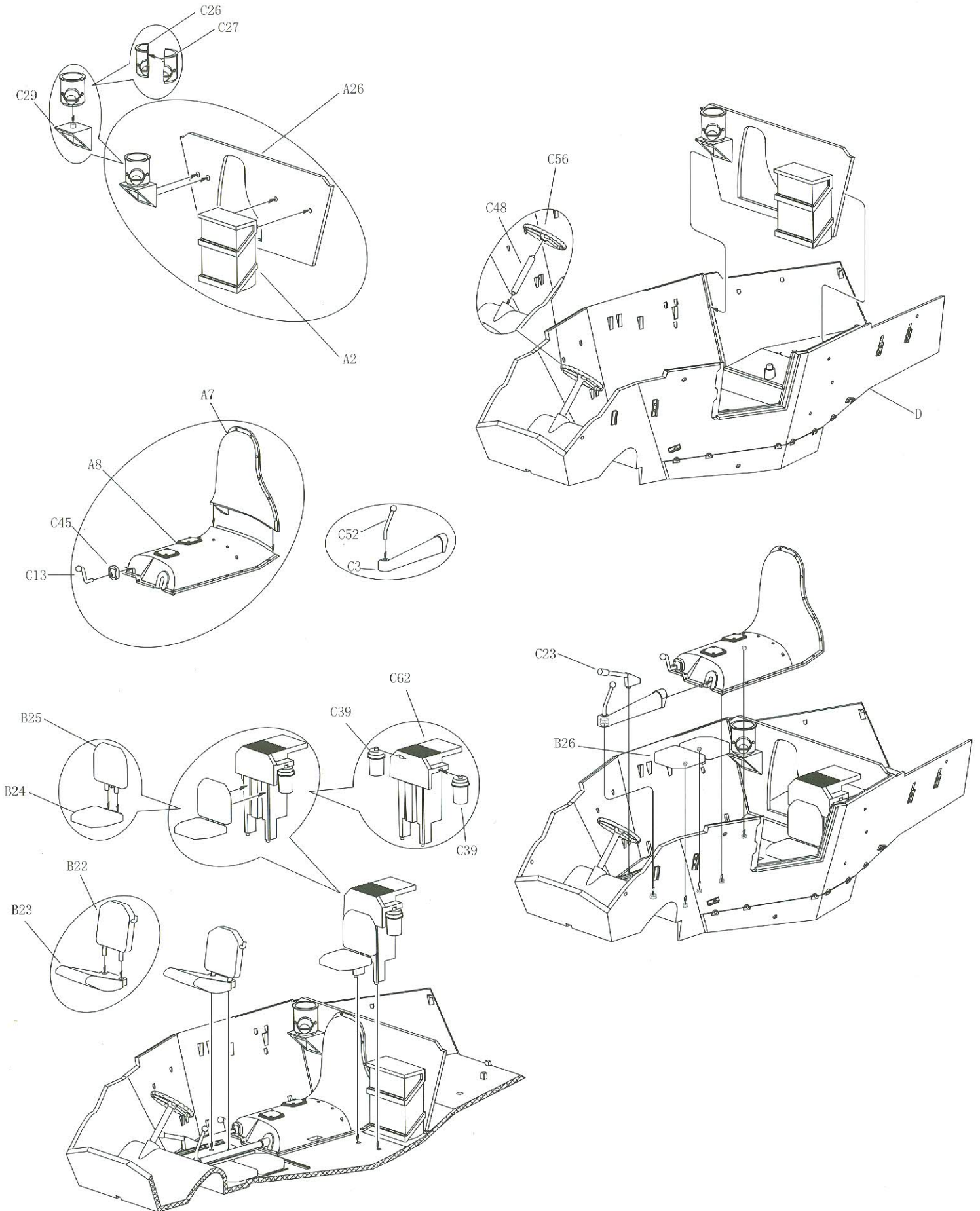
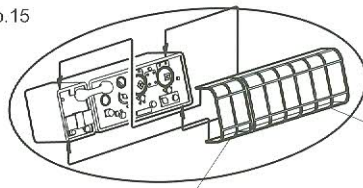
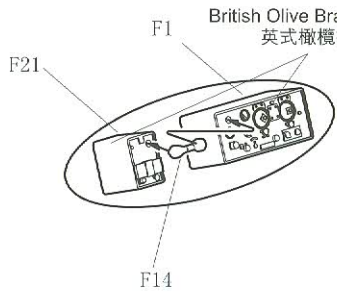
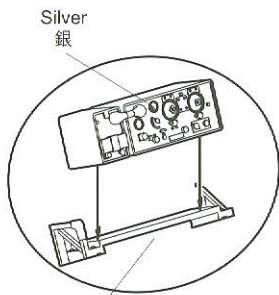
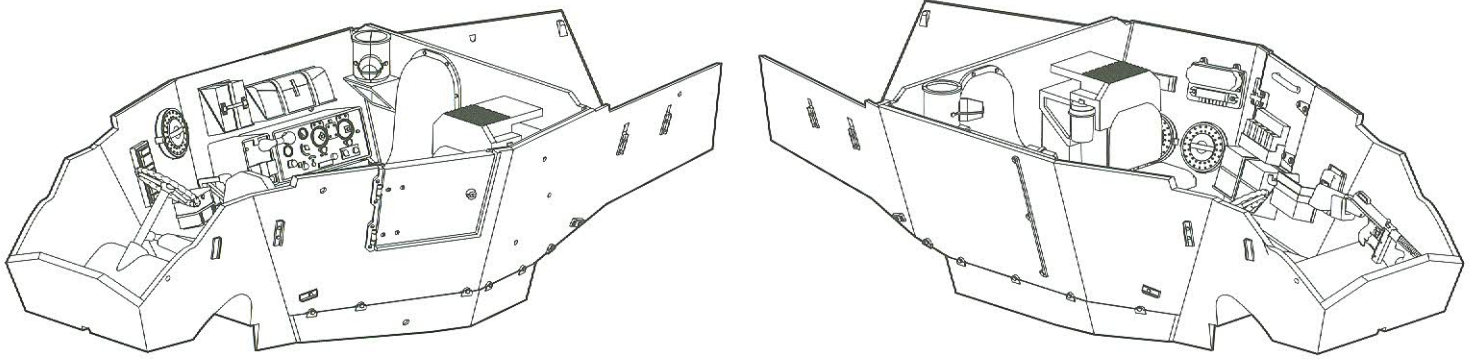
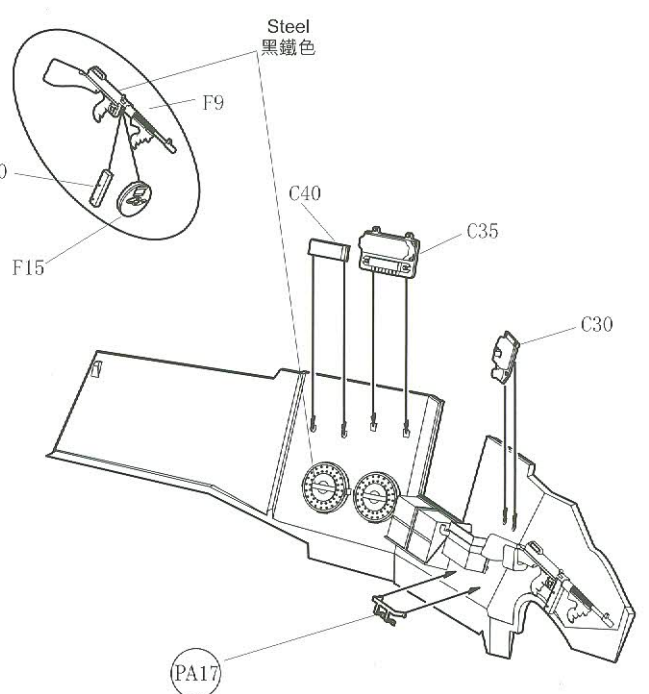
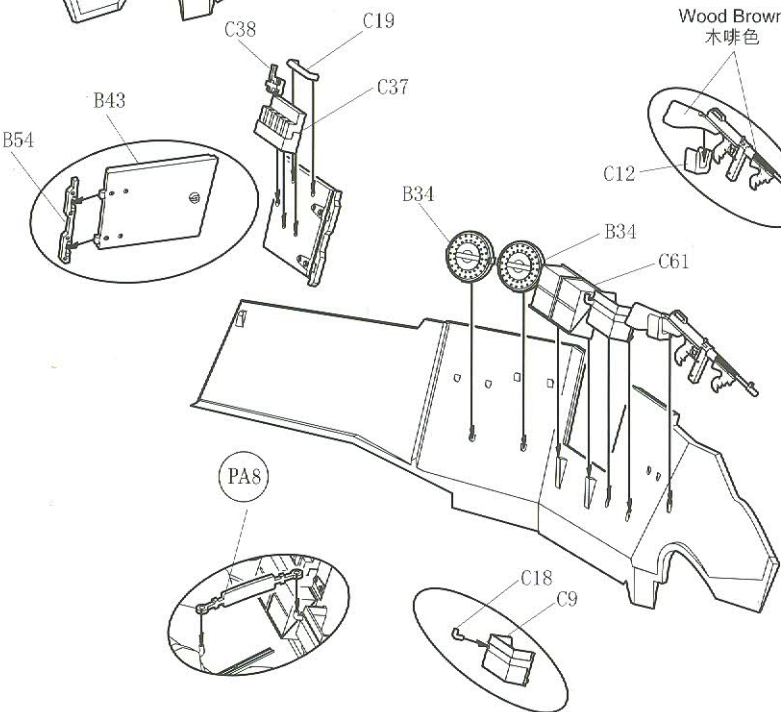
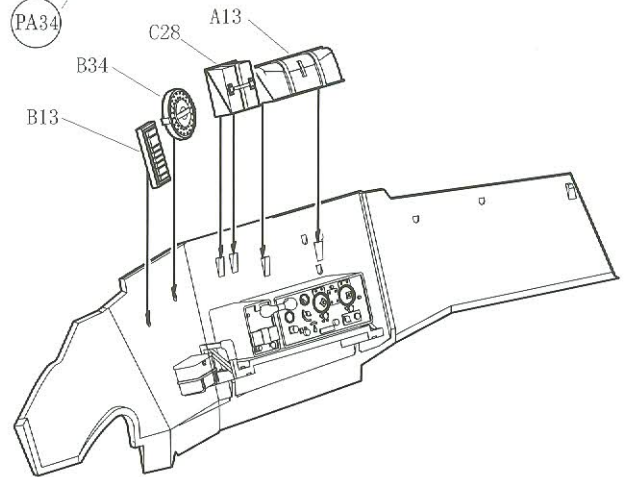
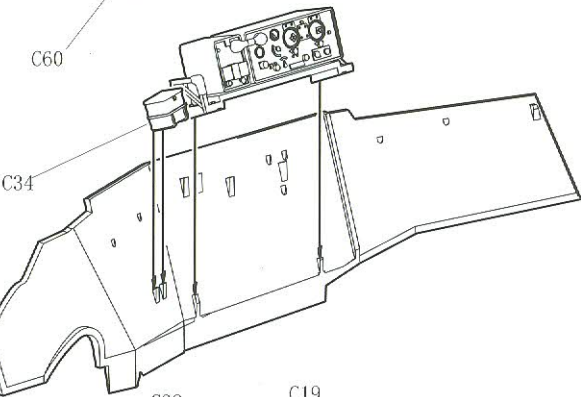


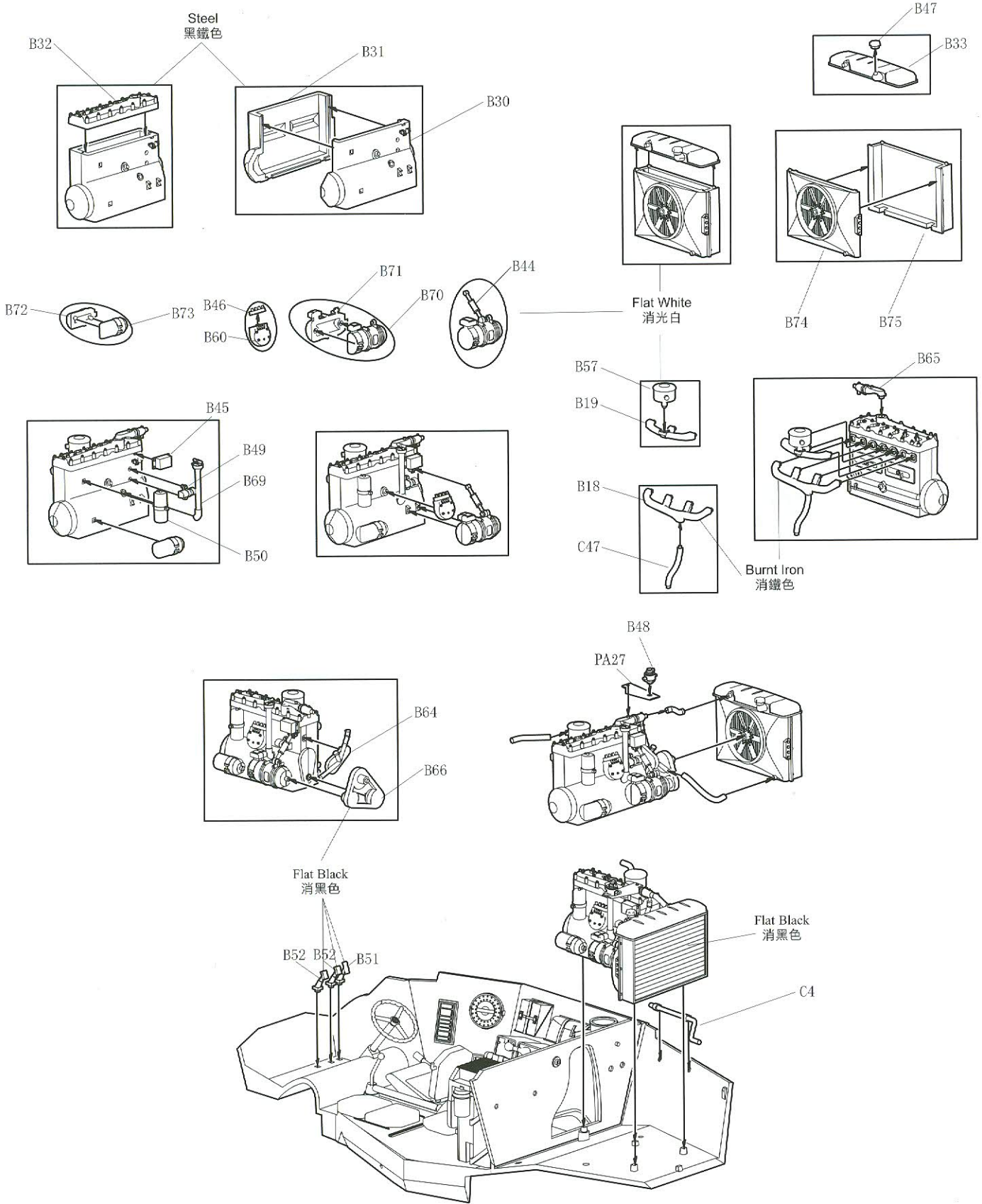
ILLUSTRATION 圖示說明：



 Instant Glue For Metal
瞬間接著劑 · 金屬用



Interior Assembly



Interior Assembly

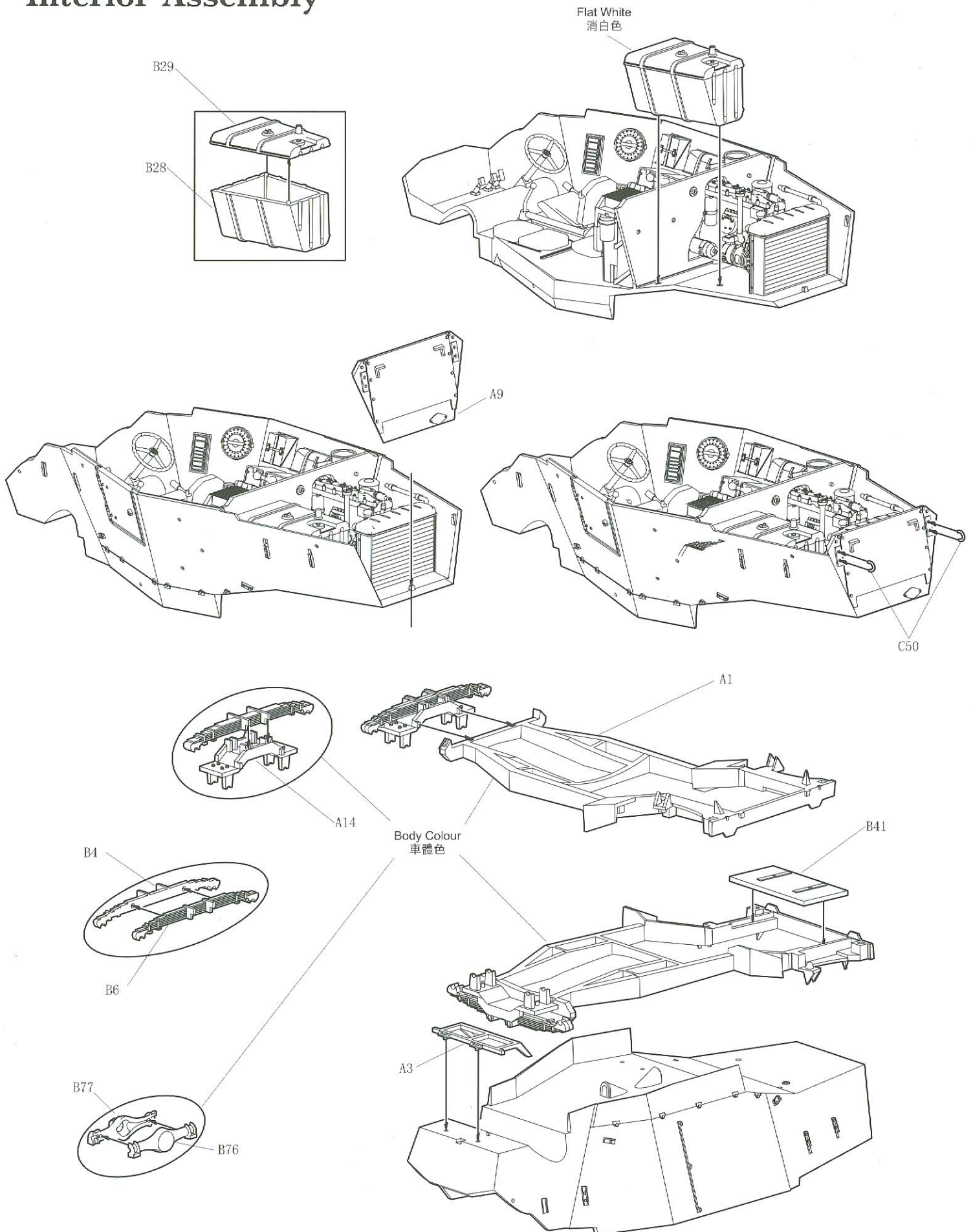
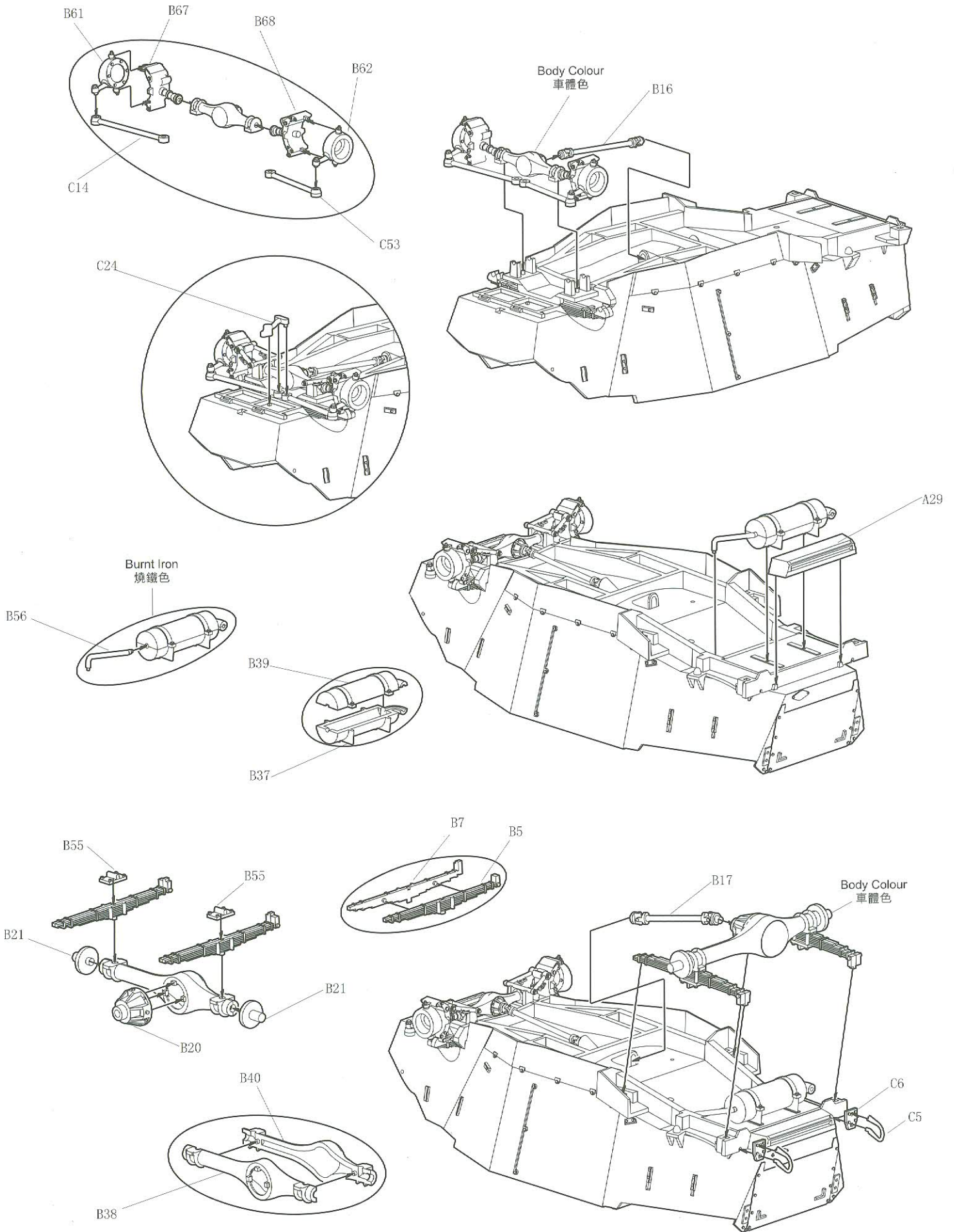


ILLUSTRATION 圖示說明：



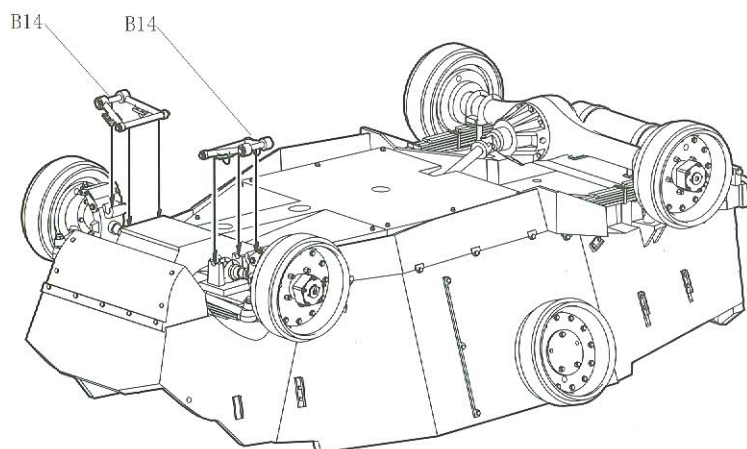
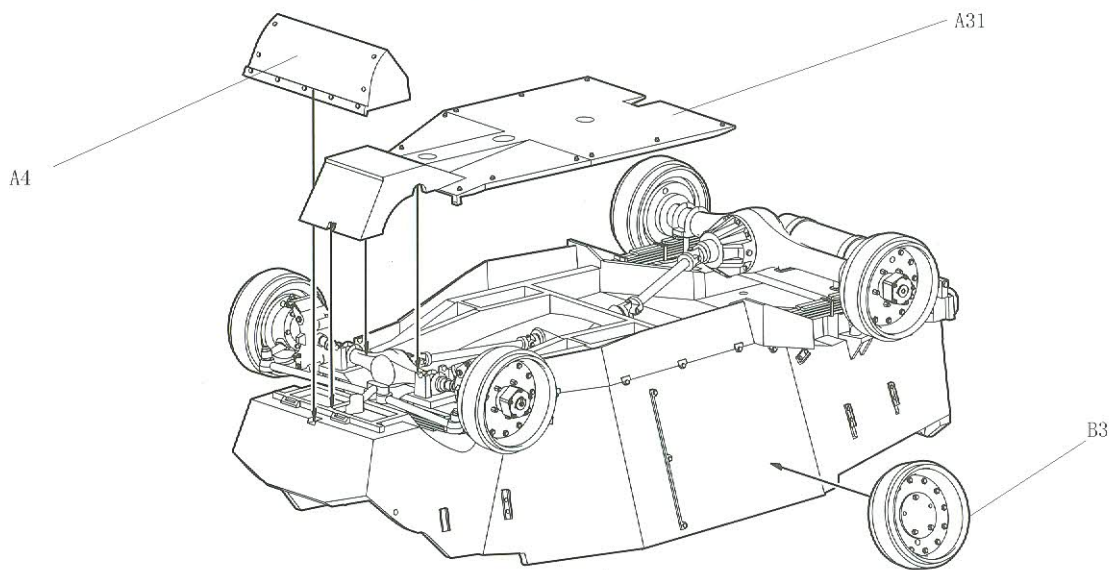
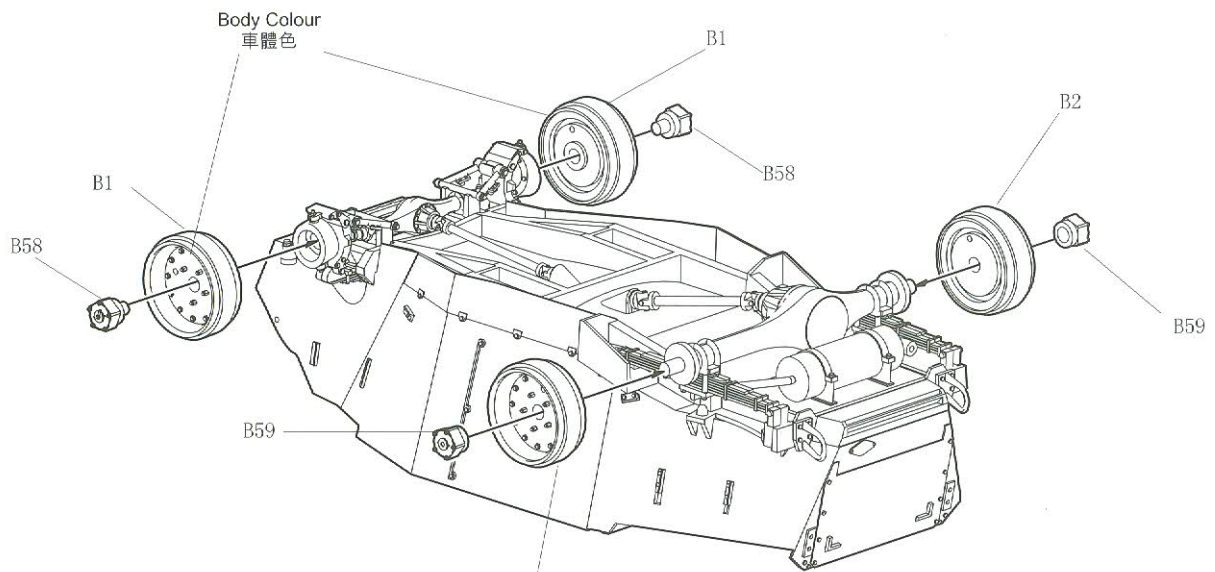
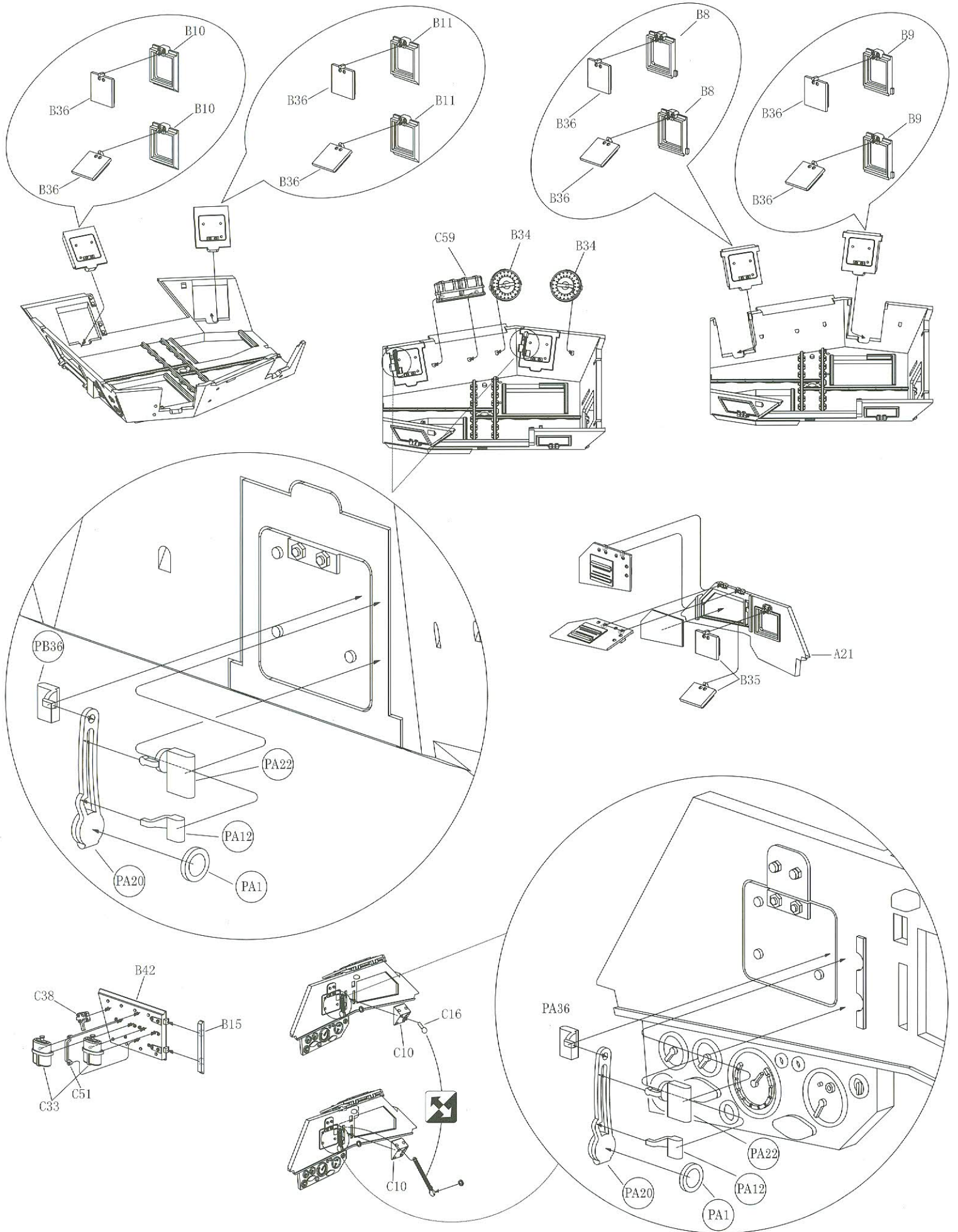


ILLUSTRATION 圖示說明：



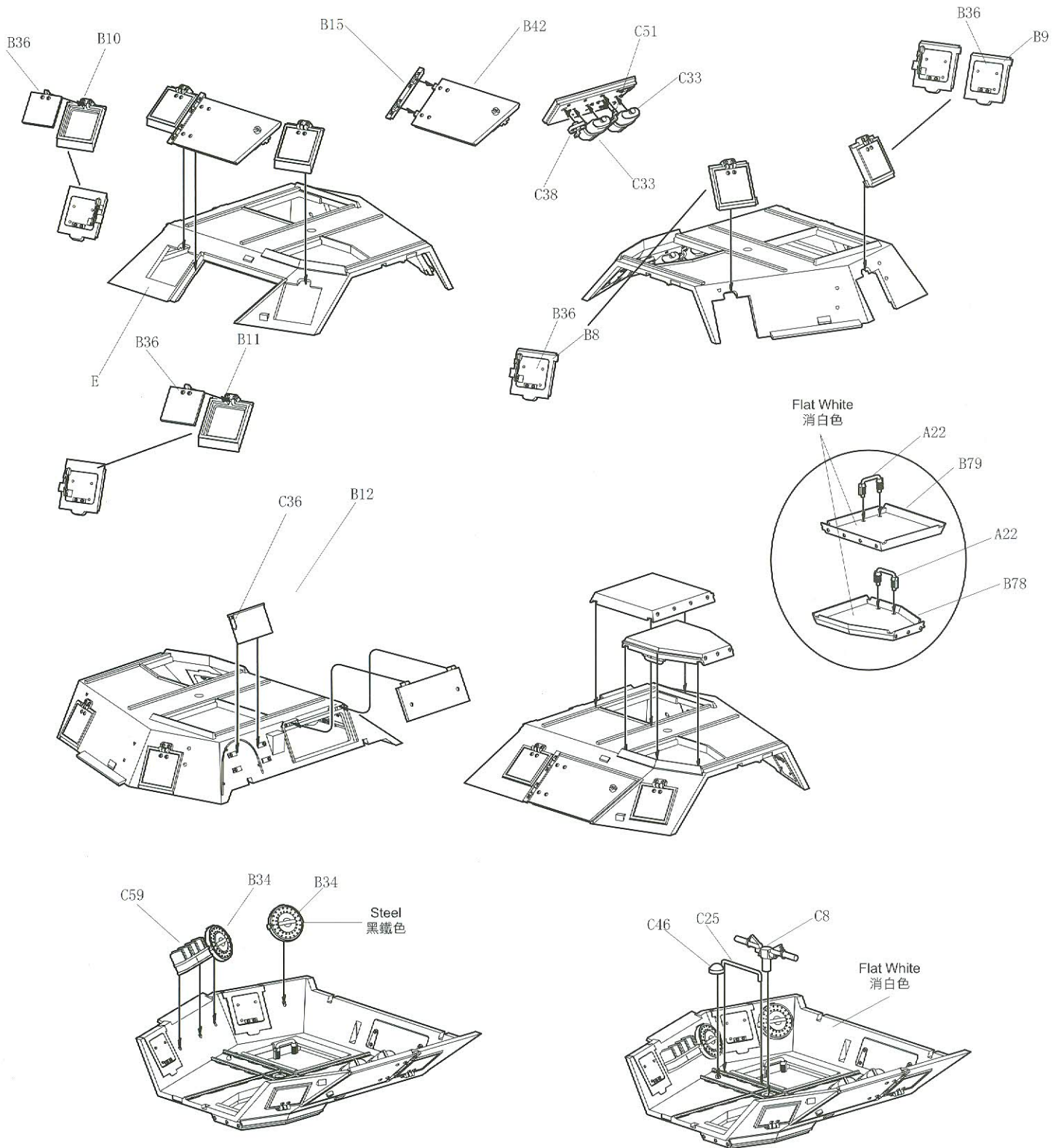
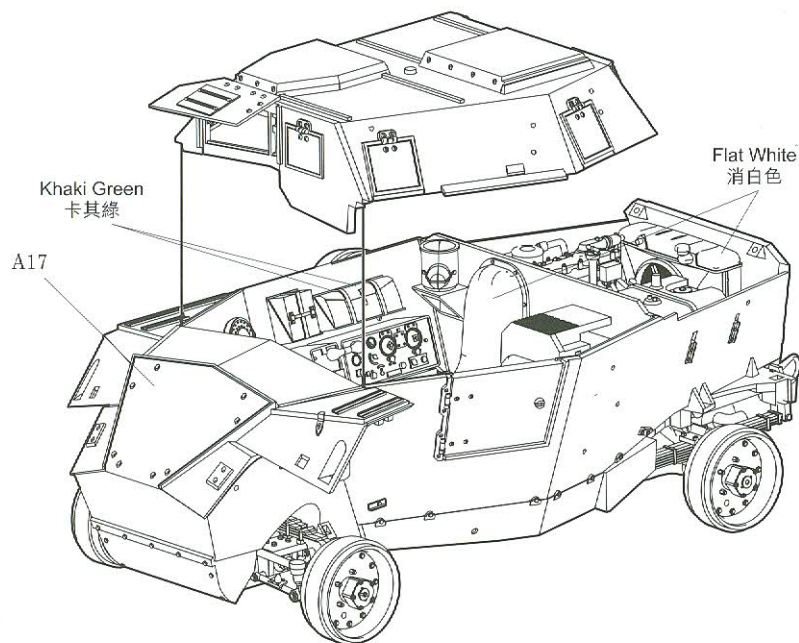
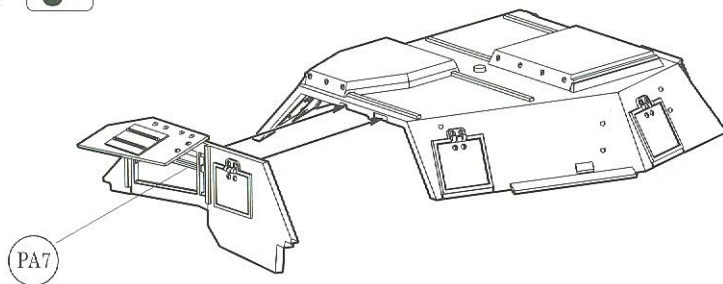
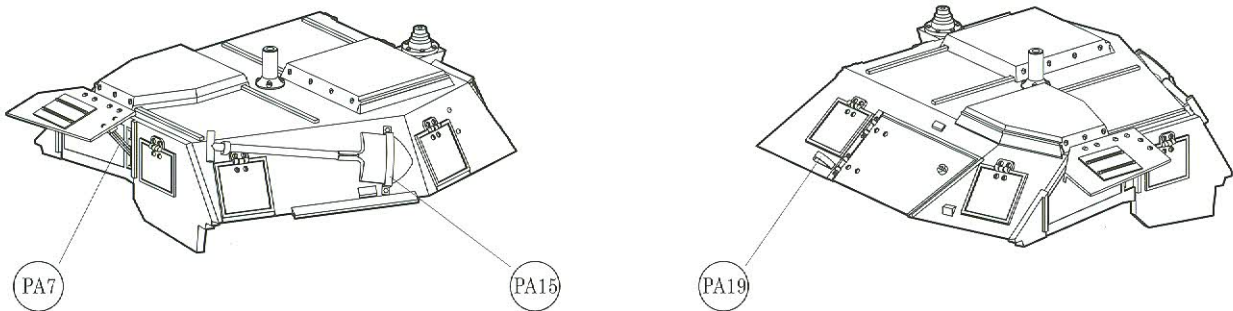
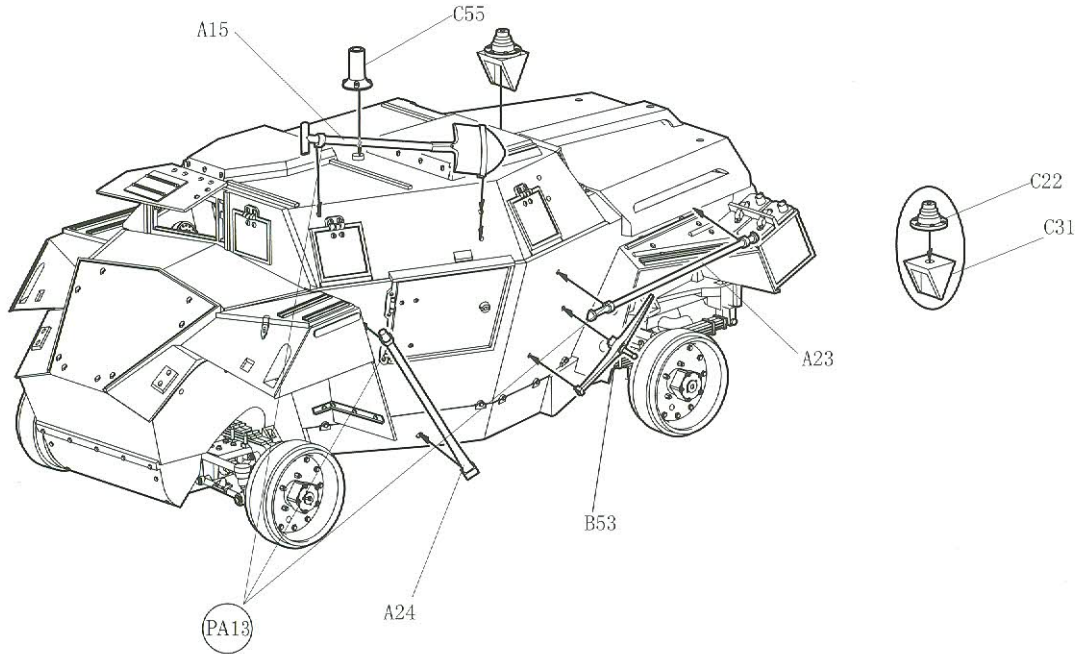


ILLUSTRATION 圖示說明：



Instant Glue For Metal
瞬間接著劑，金屬用





 Instant Glue For Metal
瞬間接著劑·金屬用

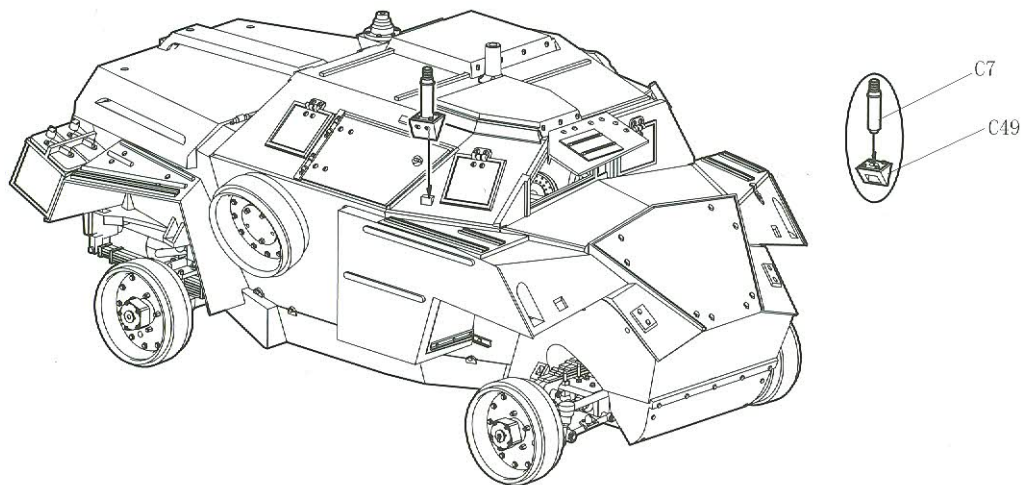
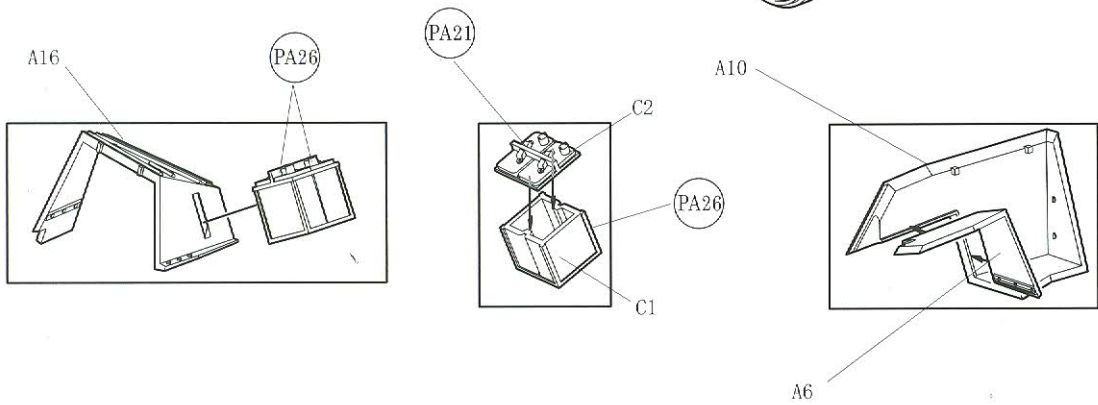
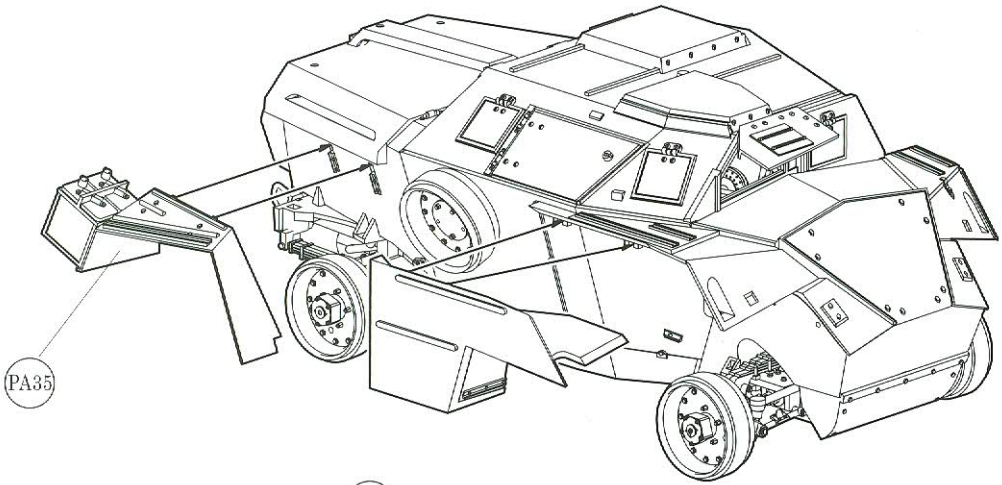
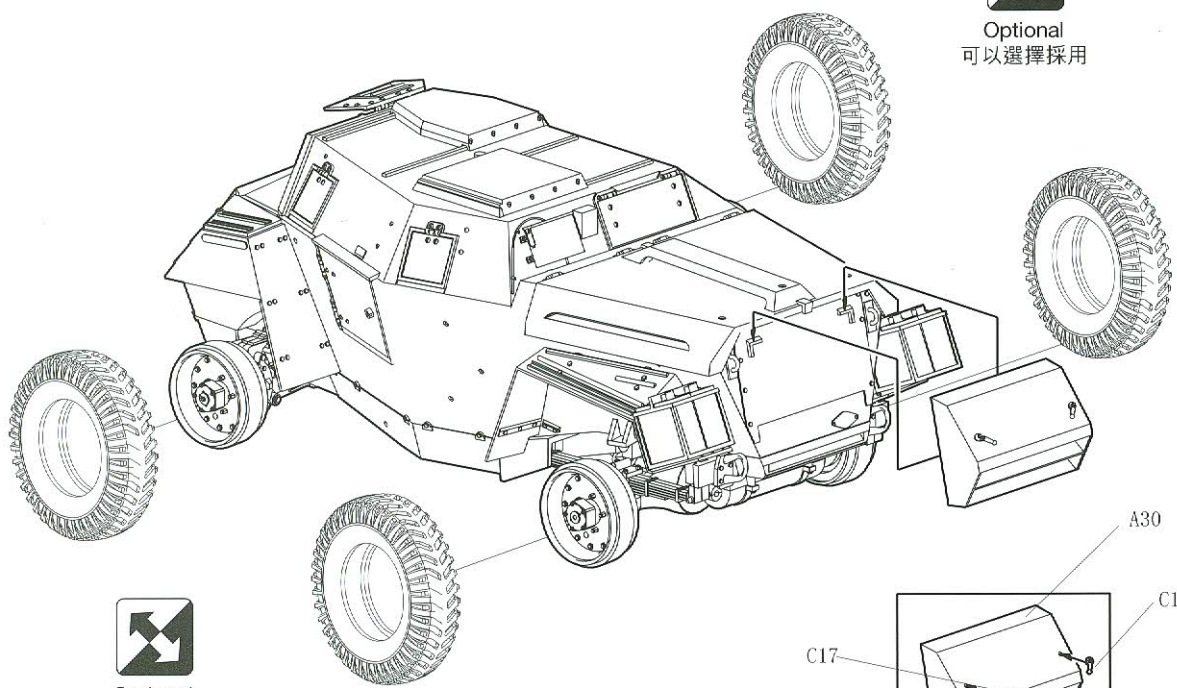


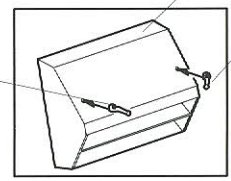
ILLUSTRATION 圖示說明：

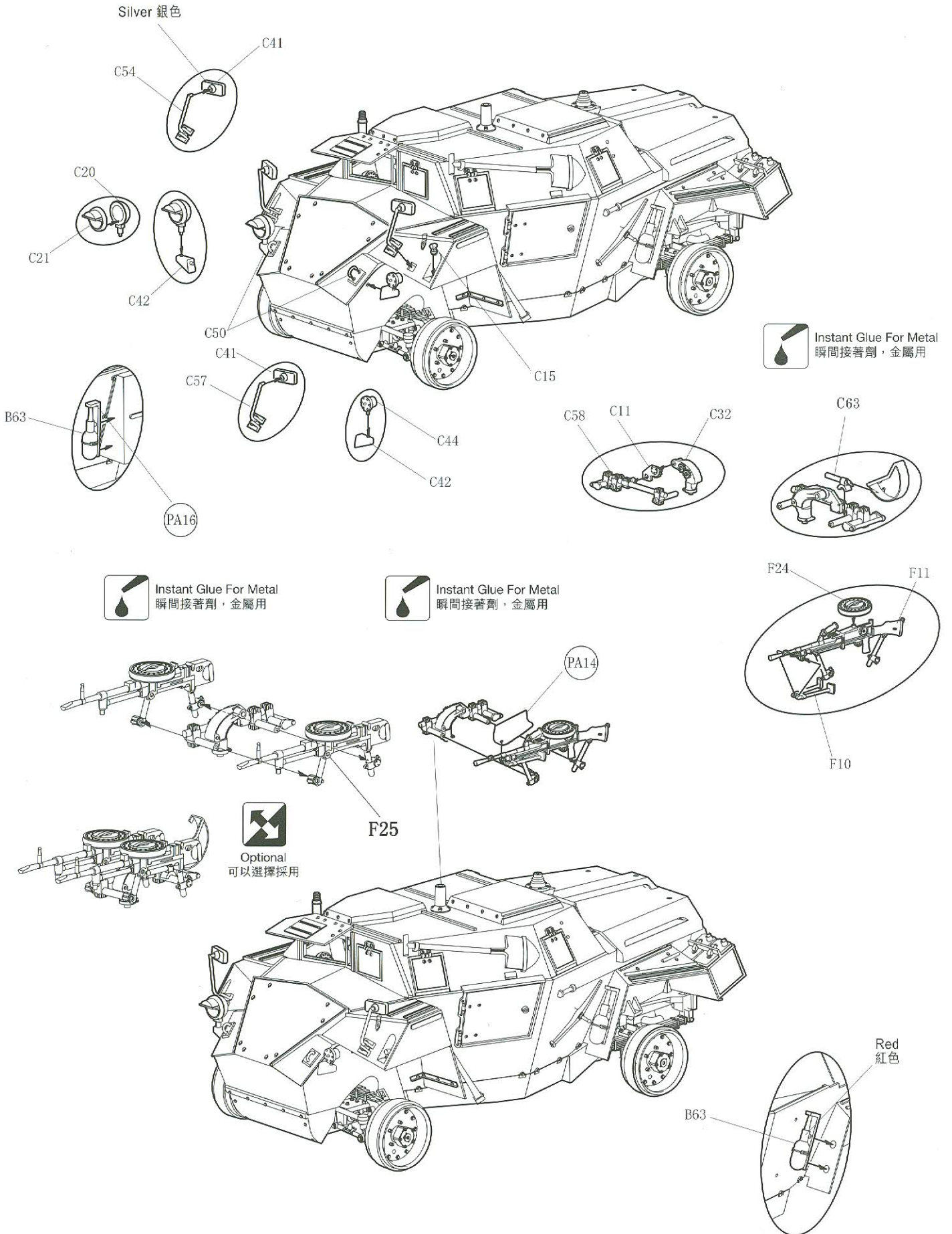


Optional
可以選擇採用



Optional
可以選擇採用





Instant Glue For Metal
瞬間接著劑，金屬用

Instant Glue For Metal
瞬間接著劑，金屬用

Optional
可以選擇採用

COLOUR GUIDE 塗色說明：

