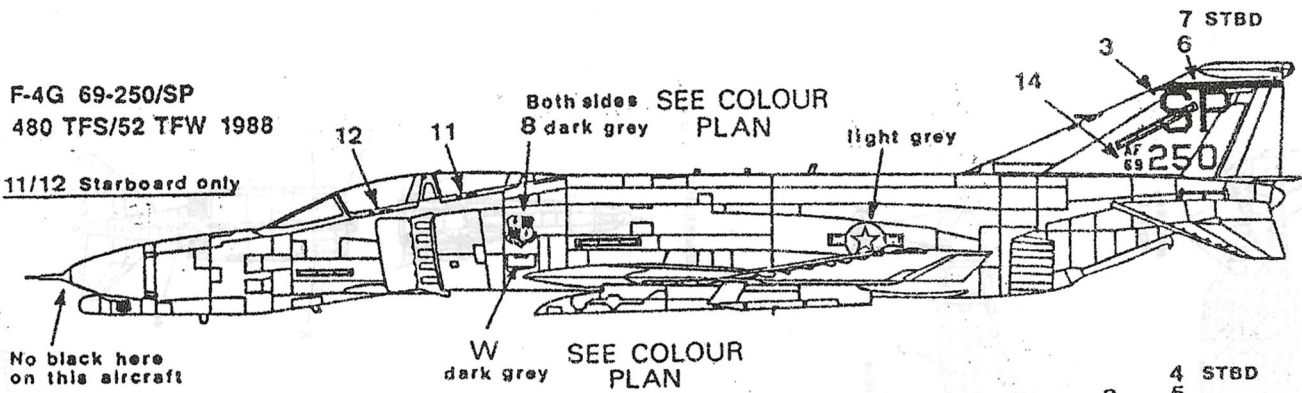


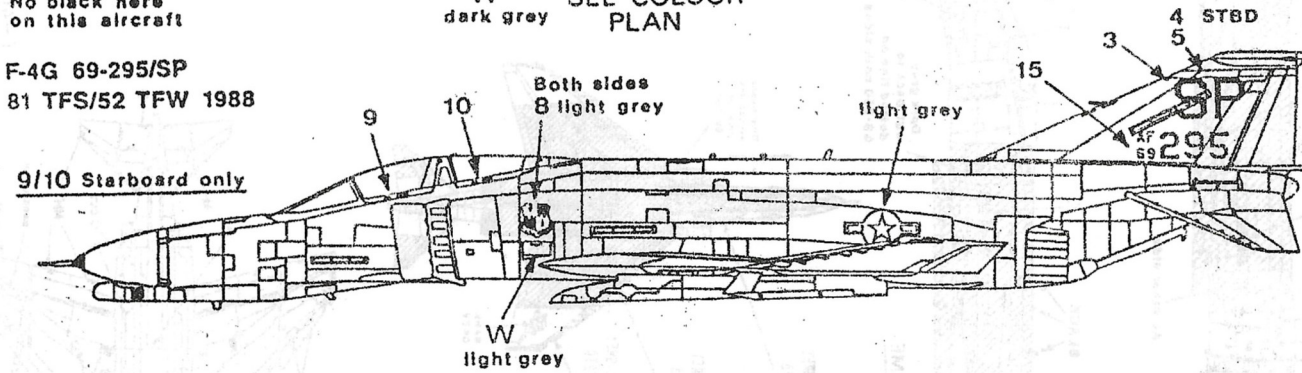
F-4G 69-250/SP
480 TFS/52 TFW 1988

11/12 Starboard only

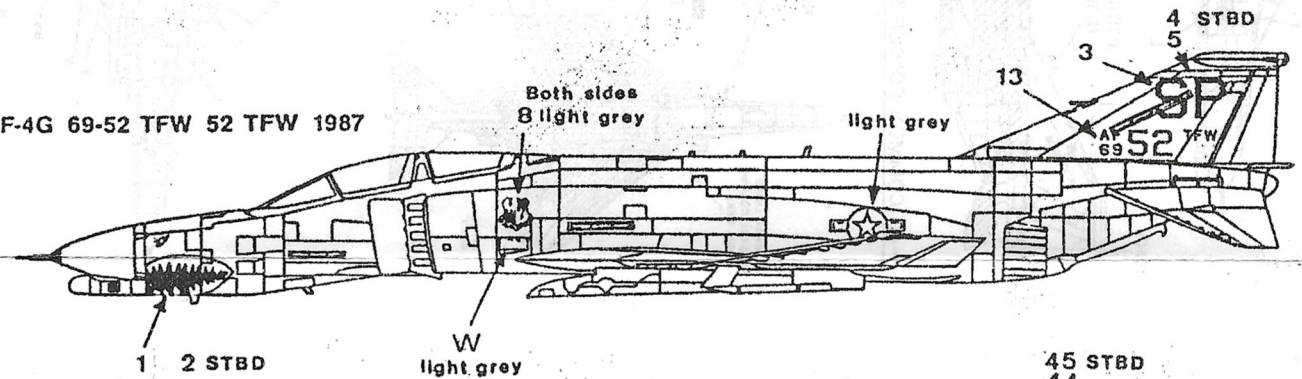


F-4G 69-295/SP
81 TFS/52 TFW 1988

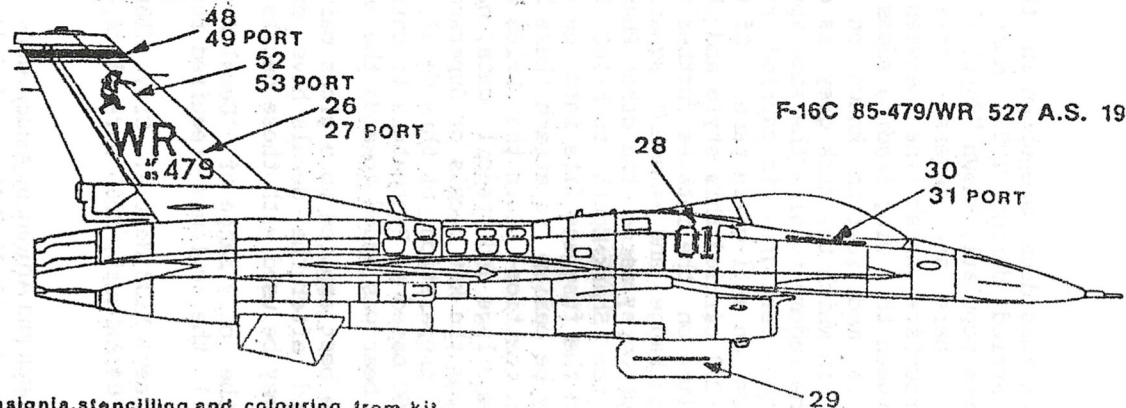
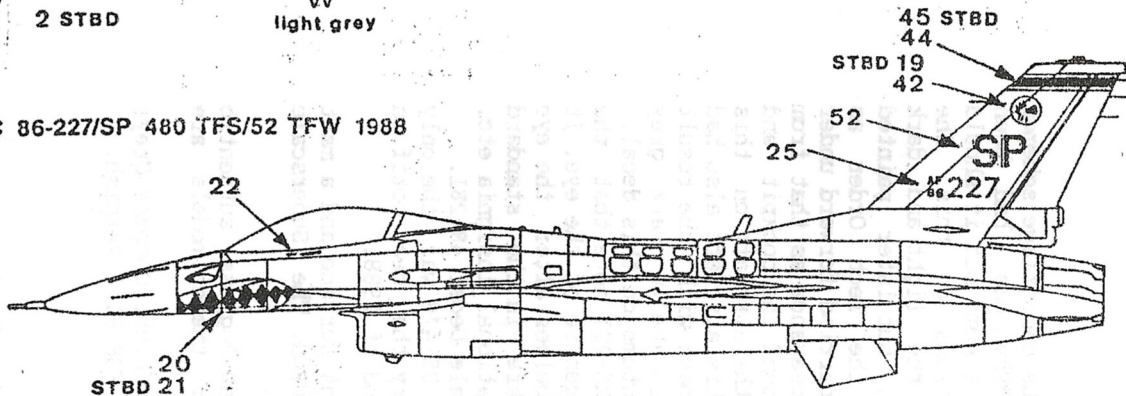
9/10 Starboard only



F-4G 69-52 TFW 52 TFW 1987



F-16C 86-227/SP 480 TFS/52 TFW 1988



F-16C 85-479/WR 527 A.S. 1988

Nat. insignia, stencilling and colouring from kit.

TRADEGAL
005-48

UNITED STATES AIR FORCE IN EUROPE
UP-DATE #1 1988. F-4G and F-16C

The aircraft on this decal are shown in the camouflage schemes which were carried during 1988. Most Phantoms had been repainted in the popularly known "Egypt 1" scheme but it should be noted that there are several variations on this. The original undersurface break line between the light and dark greys was between the wing leading edges, but later painted aircraft have a modification known on the Tech Order as "Project Hill" in which the dark grey is carried forward under the nose to the radome to give the same appearance as that from above, where the dark grey is carried round the cockpit and forward to form an anti-glare panel. Of the aircraft on this decal only 69-250 carried this style and this aircraft also had the dividing line on the intakes further back with the result that the Wing badge and armament square are in dark grey instead of light grey as on the other Phantoms on this decal. When applying the Shark Mouth to F-16C 86-227 note that the small bulge on the fuselage fits into the centre of the eye. It will generally be easier to attach these bulges after the eye decals are in position. Both the F-16s are in the standard three-grey camouflage and stencil data, national insignia etc. may be used from the kit decals or Superscale Decal 48-281. At the time of preparation of this decal, 85-479 was the only Aggressor F-16C based at Bentwaters to carry the bear motif on the fin. This bear was added towards the end of 1988.

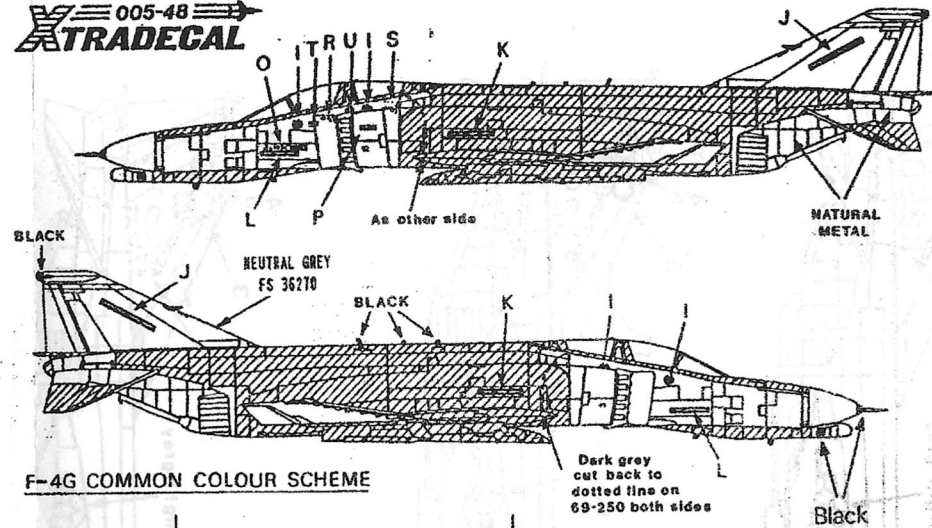
Xtradecals are best applied to a gloss paint surface and a matt varnish applied after the decals have dried. The Superscale Decal System may be used with these decals.

Xtracolor is the only range of 'Decal Ready' gloss authentic paints and all the colours required for these models are available:

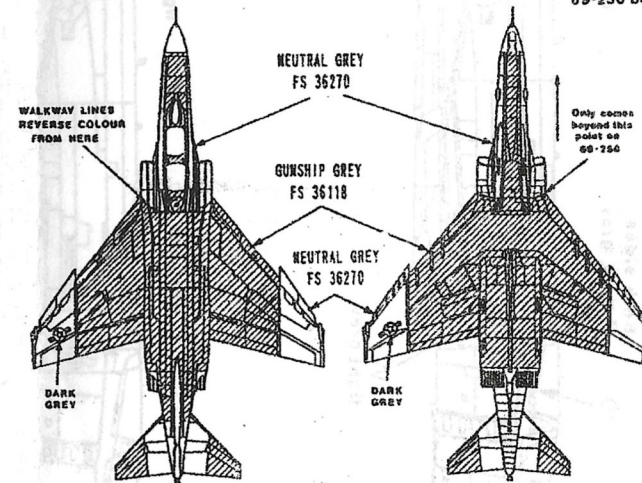
X130 Gunship Grey; X133 Neutral Grey; X136 Light Compass Grey; X141 White; X504 Exhaust; X505 Tyre Black; XDF Flat Varnish.

Research and Artwork by Ashley Amiss

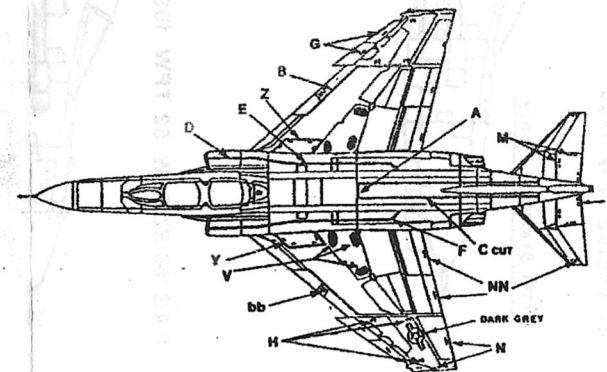
This Xtradecal is produced by H. G. Hannant Ltd., Harbour Road, Oulton Broad, Lowestoft, Suffolk, NR32 3LZ, England and printed in the USA by Microscale Industries Inc. www.hannants.co.uk. e mail sales@hannants.co.uk



F-4G COMMON COLOUR SCHEME



UNDERSIDE



F-4G
 STENCILLING

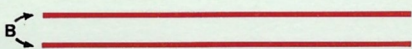


Diagram showing the layout of various decals and their placement on the aircraft fuselage. Labels include A, B, C, P, Y, Z, F, E, L, K, J, G, M, N, NN, H, R, S, W, X, U, T, O, RESCUE, and Q.

2 2 2 2 2
 2 2 2 2 2
 2 2 2 2 2
 2 2 2 2 2

9
 10
 11
 12

AF 69 295
 AF 69 295
 AF 69 250
 AF 69 250
 AF 69 52 TFW
 AF 69 52 TFW
 AF 86 227 AF 86 227
 AF 85 479
 AF 85 479

SP SP
 SP SP
 SP SP
 WR WR
 01 01

ADDC AMN SCOOBY SCUDELLO
 DCC SRA VANCE MARTIN

CAPT ARMSTRONG
 SGT. ALTA - BUN PROLETTE
 SGT. GULI - GEM COLLINA

AF 69 295
 AF 69 250
 AF 69 250
 AF 69 52 TFW
 AF 69 52 TFW
 AF 86 227 AF 86 227
 AF 85 479
 AF 85 479

SP SP
 SP SP
 SP SP
 WR WR
 01 01

ADDC AMN SCOOBY SCUDELLO
 DCC SRA VANCE MARTIN

CAPT ARMSTRONG
 SGT. ALTA - BUN PROLETTE
 SGT. GULI - GEM COLLINA