

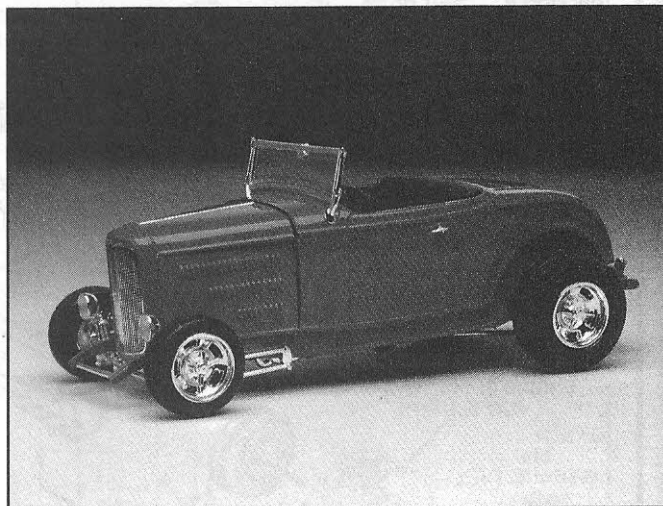
'32 FORD HIGHBOY

No other car says Street Rod more than the '32 Ford. Available in a number of body styles, one of the most popular is the '32 Highboy Roadster. The small, sporty body style was originally designed for businessmen as an inexpensive, reliable way to move around while selling their goods. Those same inexpensive roadsters and coupes are now being turned into modern pieces of rolling art. The only factor in determining the look of the finished rod is imagination.

Today's rods feature classic bodies sitting on modern frames, with up-to-date components. Gone are the original buggy springs and friction brakes, in their place you'll find state-of-the-art coil over shocks and disk brakes. The narrow wheels and tires of the 30's have given way to up-to-date tires mounted on aluminum wheels, giving the car a nose in the weeds stance.

While some rodders continue to use original flathead V-8's, most prefer to replace them with newer versions for more performance and better over-the-road reliability. The old 3-speed crash box transmissions are replaced with over-drive automatics, and everything is dressed up with polished billet aluminum or chrome trim.

The interiors are something that the car's original designers couldn't have even imagined! Sculptured interiors covered with leather or other fabrics in a rainbow of colors have replaced the old cardboard and mohair of the original. It's no doubt that the '32 Ford Highboy makes one great Street Rod!



* REPEAT SEVERAL TIMES
* A REPETER PLUSIEURS FOIS

* OPTIONAL PARTS
* PIECES EN OPTION

* DECAL
* DECAL COMANIE

* ALTERNATIVE ASSEMBLY
* ENSEMBLAGE ALTERNATIVE

* CEMENT TOGETHER
* A COLLER

* REMOVE AND THROW AWAY
* A RETIRER ET JETER

* DO NOT CEMENT
* NE PAS COLLER

READ THIS BEFORE YOU BEGIN

- * Study the assembly drawings.
- * Each plastic part is identified by a number.
- * In the assembly drawings, some parts will be marked by a star (★) to indicate chrome plated plastic.
- * For better paint and decal adhesion, wash the plastic parts in a mild detergent solution. Rinse and let air dry.
- * Check the fit of each piece before cementing in place.
- * Use only cement for polystyrene plastic.
- * Scrape plating and paint from areas to be cemented.
- * Allow paint to dry thoroughly before handling parts.
- * Any unused parts may be discarded.

DECAL APPLICATION INSTRUCTIONS

1. Cut desired decal from sheet.
2. Dip decal in water for a few seconds.
3. Place wet decal on paper towel.
4. Wait until decal is movable on paper backing.
5. Place decal in position on model, face up and slide backing away.
6. Press out air bubbles with a soft damp cloth.
7. Milkiness that may appear is for better decal adhesion and will dry clear. Wipe away any excess adhesive.
8. Do not touch decal until fully dry.
9. Allow the decals 48 hours to dry before applying clear coat.

NOTE: Decals are not compatible with setting solutions or solvents.

LIRE CE QUI SUIT AVANT DE COMMENCER

- * Etudier les schémas de montage.
- * Chaque pièce en plastique est identifiée par un numéro.
- * Sur les schémas de montage, certaines pièces sont marquées d'une étoile (★) pour indiquer qu'elles sont en plastique chromé.
- * Pour une meilleure prise de la peinture et des autocollants, laver les pièces en plastique avec une solution détergente peu concentrée. Les rincer et les laisser sécher à l'air.
- * Vérifier que chaque pièce s'ajuste bien avant de la coller en place.
- * N'utiliser que de la colle pour polystyrène.
- * Gratter les parties à coller pour enlever le chrome et la peinture.
- * Laisser la peinture bien sécher avant de manipuler les pièces.
- * Toute pièce inutilisée peut être jetée.

DIRECTIVES D'APPLICATION DES AUTOCOLLANTS

1. Découper l'autocollant désiré de la feuille.
2. Tremper l'autocollant dans de l'eau pendant quelques secondes.
3. Placer l'autocollant mouillé sur une serviette en papier.
4. Attendez que l'autocollant puisse être déplacé sur son support en papier.
5. Mettre l'autocollant en position sur le modèle face sur le dessus et faire glisser le support pour l'enlever.
6. Appuyer avec un chiffon doux humide pour éliminer les bulles d'air.
7. La substance laiteuse qui peut apparaître est destinée à améliorer l'adhésion de l'autocollant et devient incolore au séchage. Essuyer pour enlever tout excédent d'adhésif.
8. Ne pas toucher l'autocollant tant qu'il n'est pas bien sec.
9. Laisser l'autocollant sécher pendant 48 heures avant d'appliquer une couche transparente.

REMARQUE: Les autocollants sont incompatibles avec les solutions de fixation ou les solvants.

This paint guide is provided to complete this kit as shown on the box.

Ce guide de peinture est fourni pour reproduire le modèle réduit qui apparaît sur la boîte.

Gloss Black	Noir Lustre
Flat Black	Noir Terne
Gloss White	Blanc Lustre
Gloss Orange	Orange Lustre
Aluminum	Aluminum
Steel	Acier
Desert Tan	Brun Clair
Gloss Yellow	Jaune Brillant
Gloss Red	Rouge Brillant

We recommend ProModeler™ or Revell-Monogram paints.

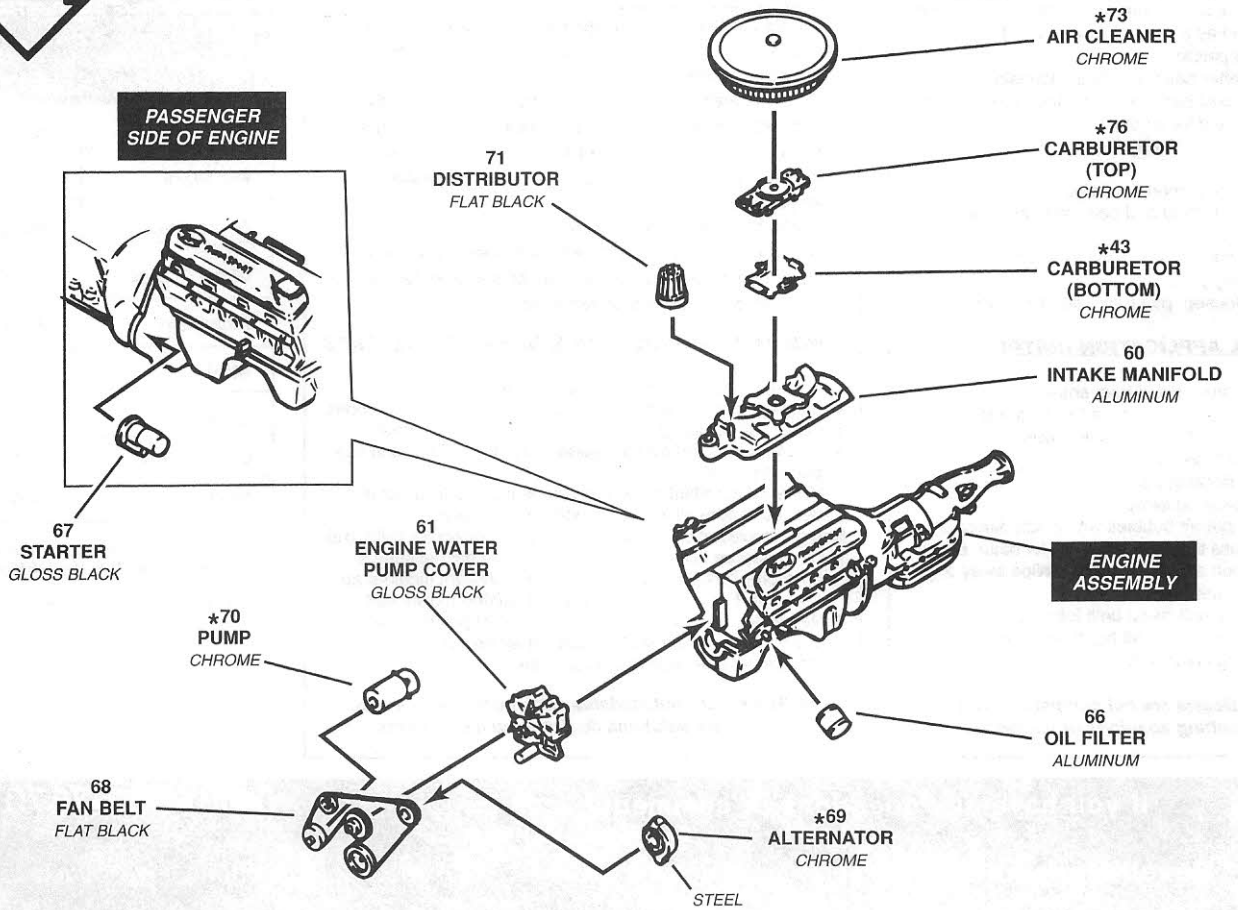
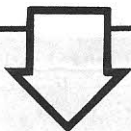
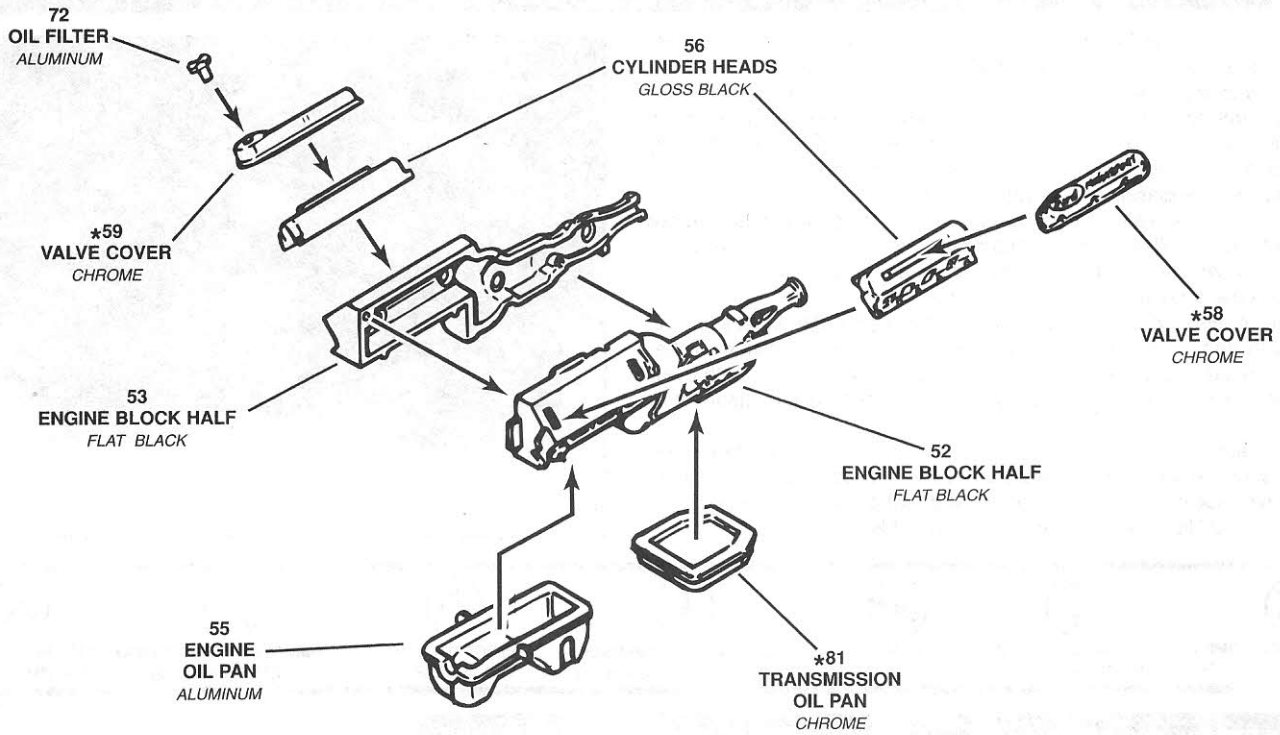
If you have any questions or comments, call our hotline at: **(800) 833-3570**
or, please write to:

Revell-Monogram Consumer Service Department, 8601 Waukegan Road, Morton Grove, Illinois 60053
Be sure to include the kit number, part number, description, your return address and phone number.

Visit our website: www.revell-monogram.com

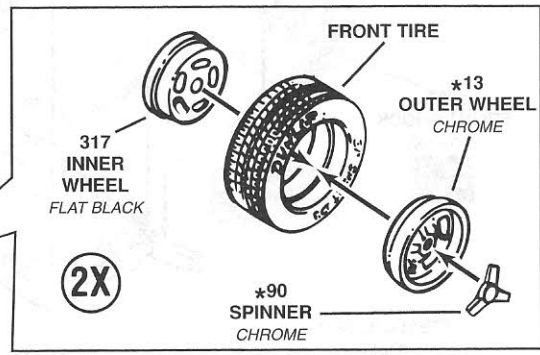
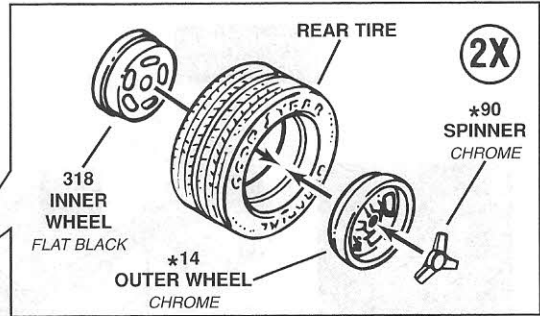
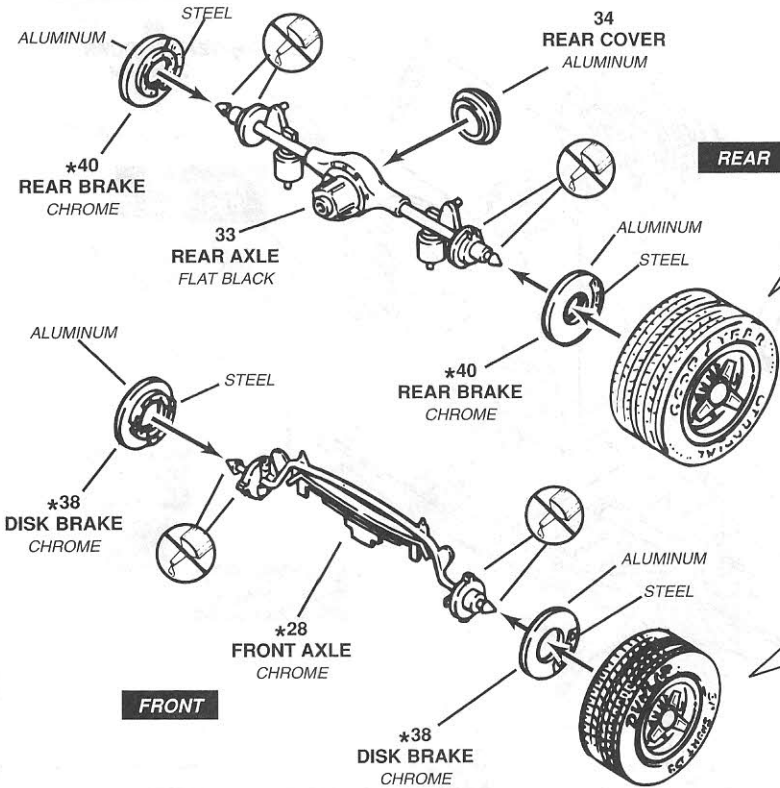
1

ENGINE ASSEMBLY



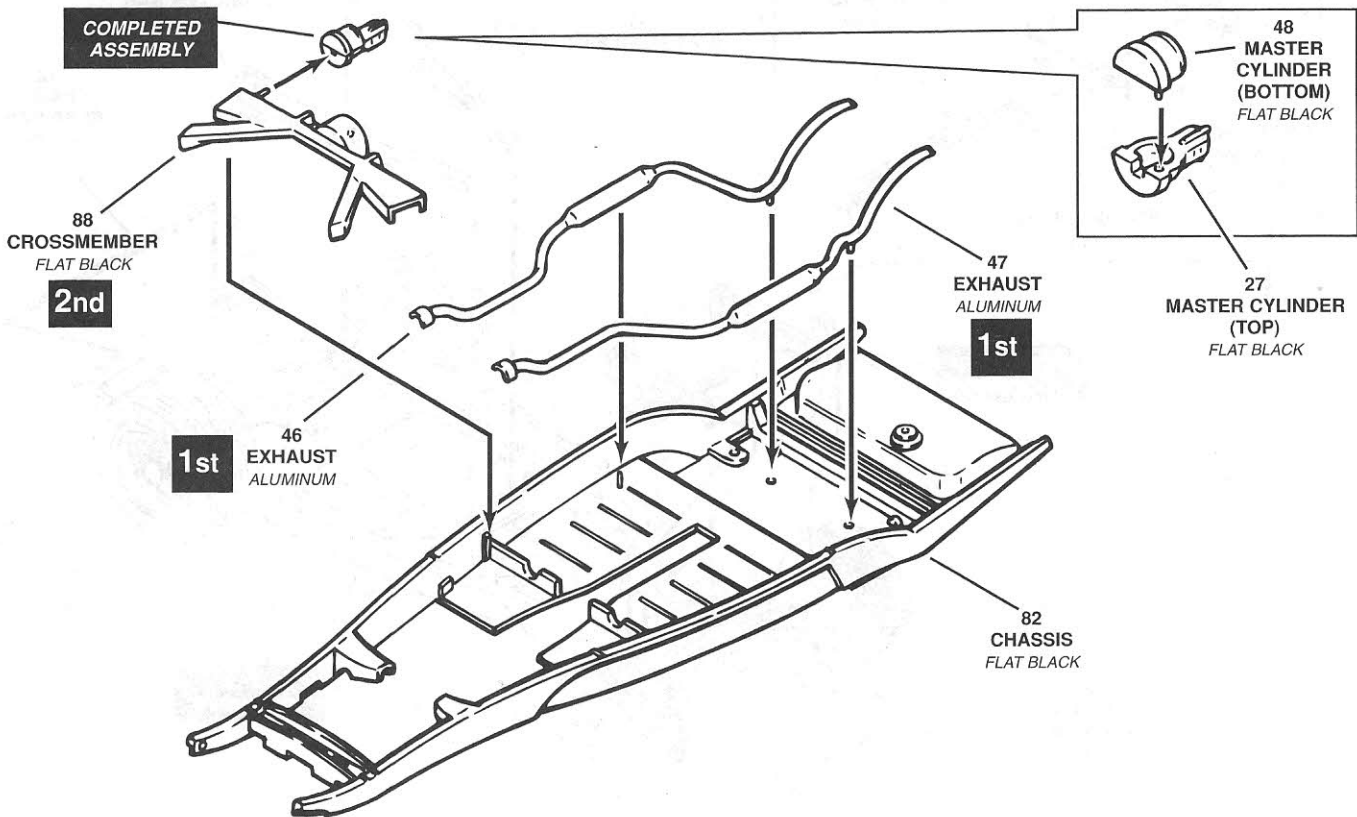
2

FRONT AND REAR AXLE ASSEMBLY



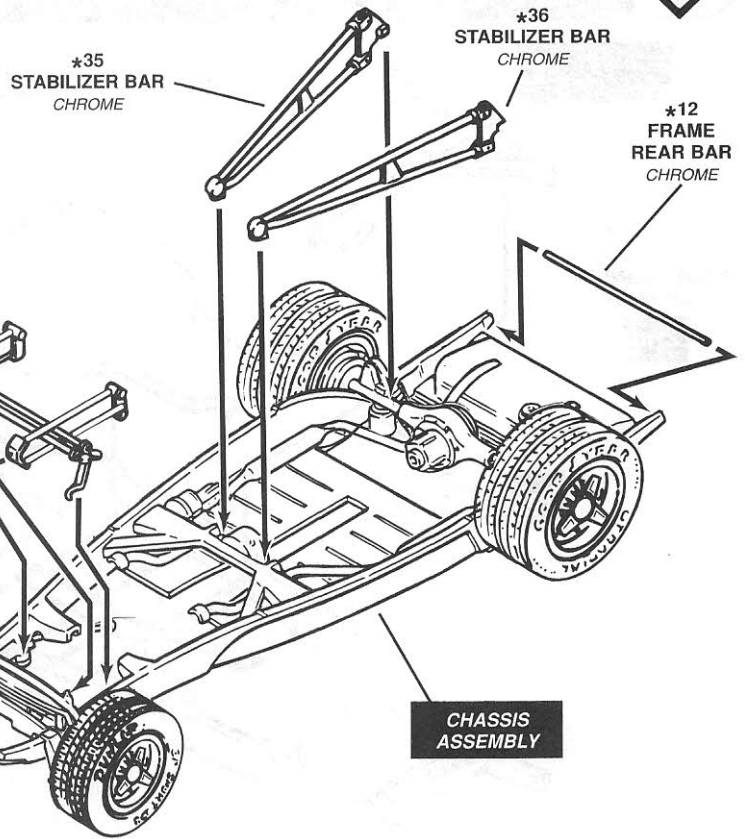
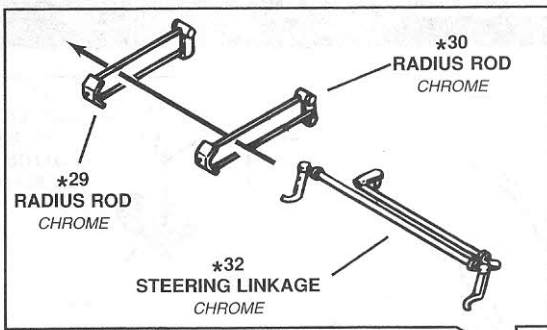
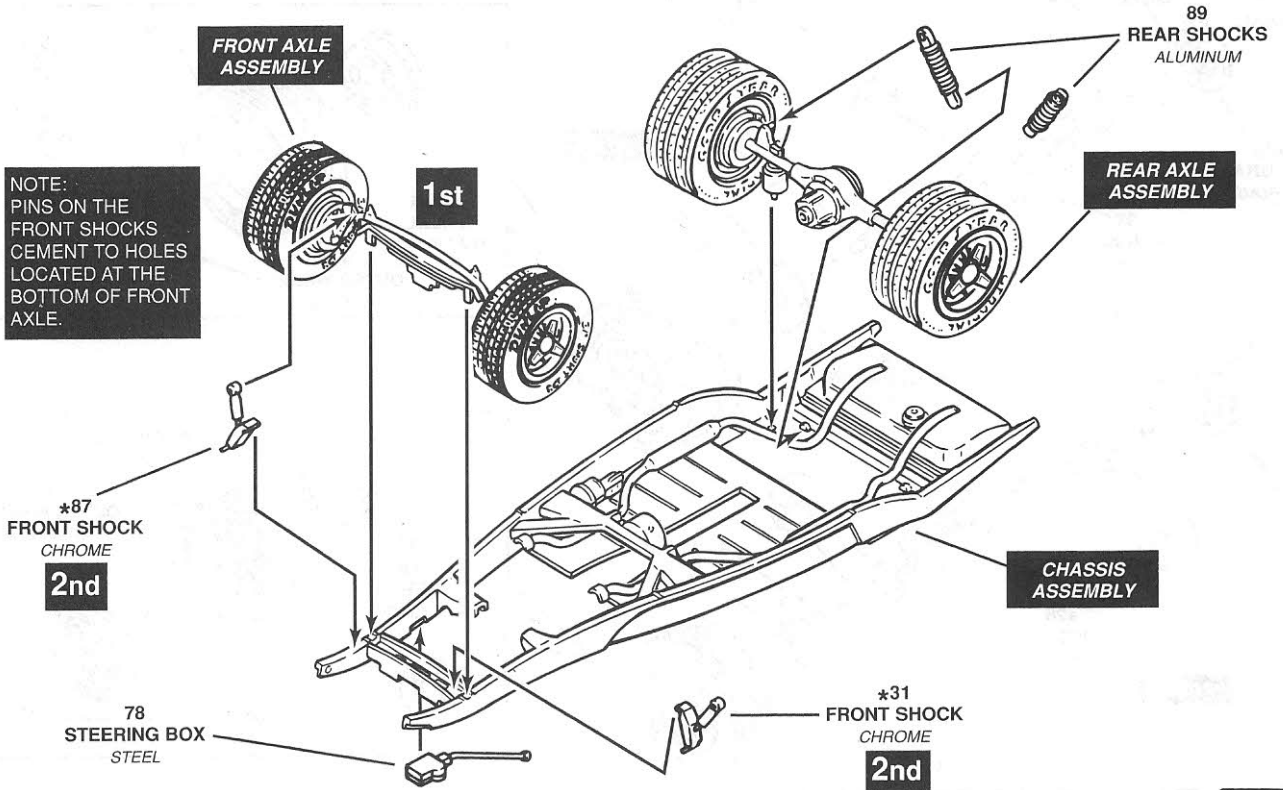
3

CHASSIS ASSEMBLY

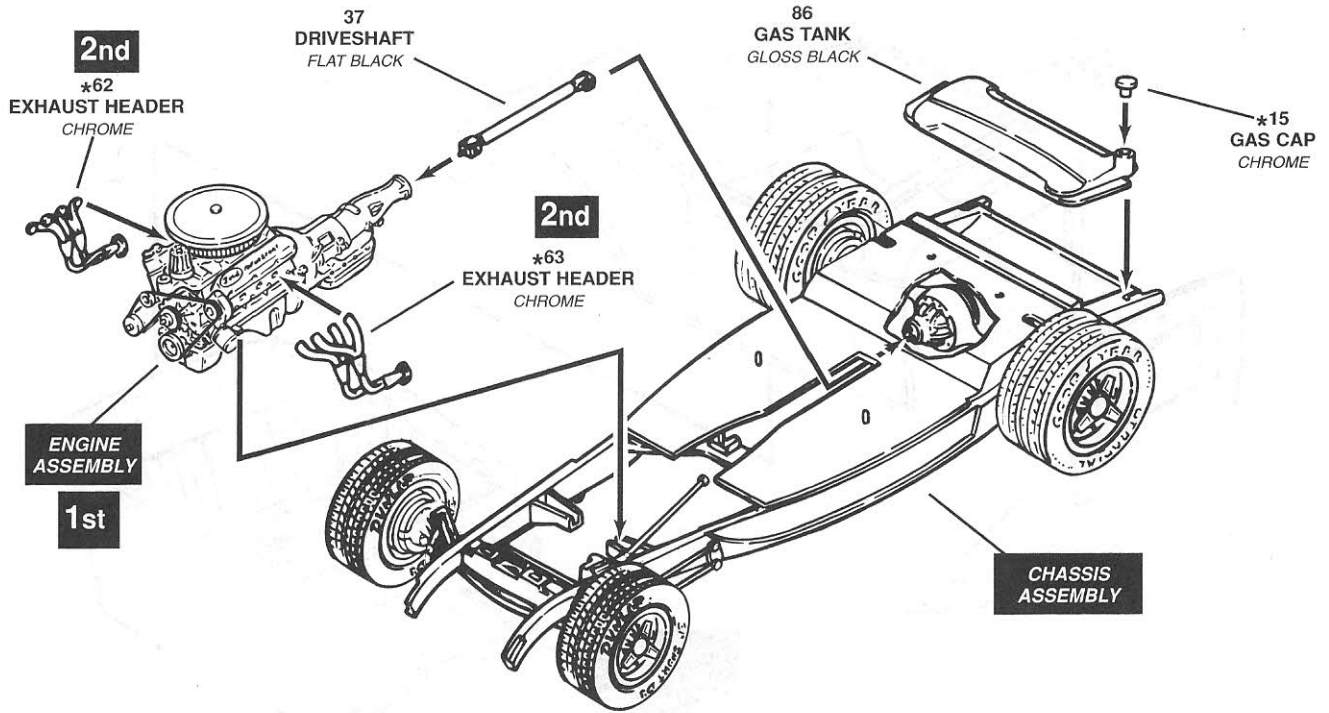


4 CHASSIS ASSEMBLY CONTINUED

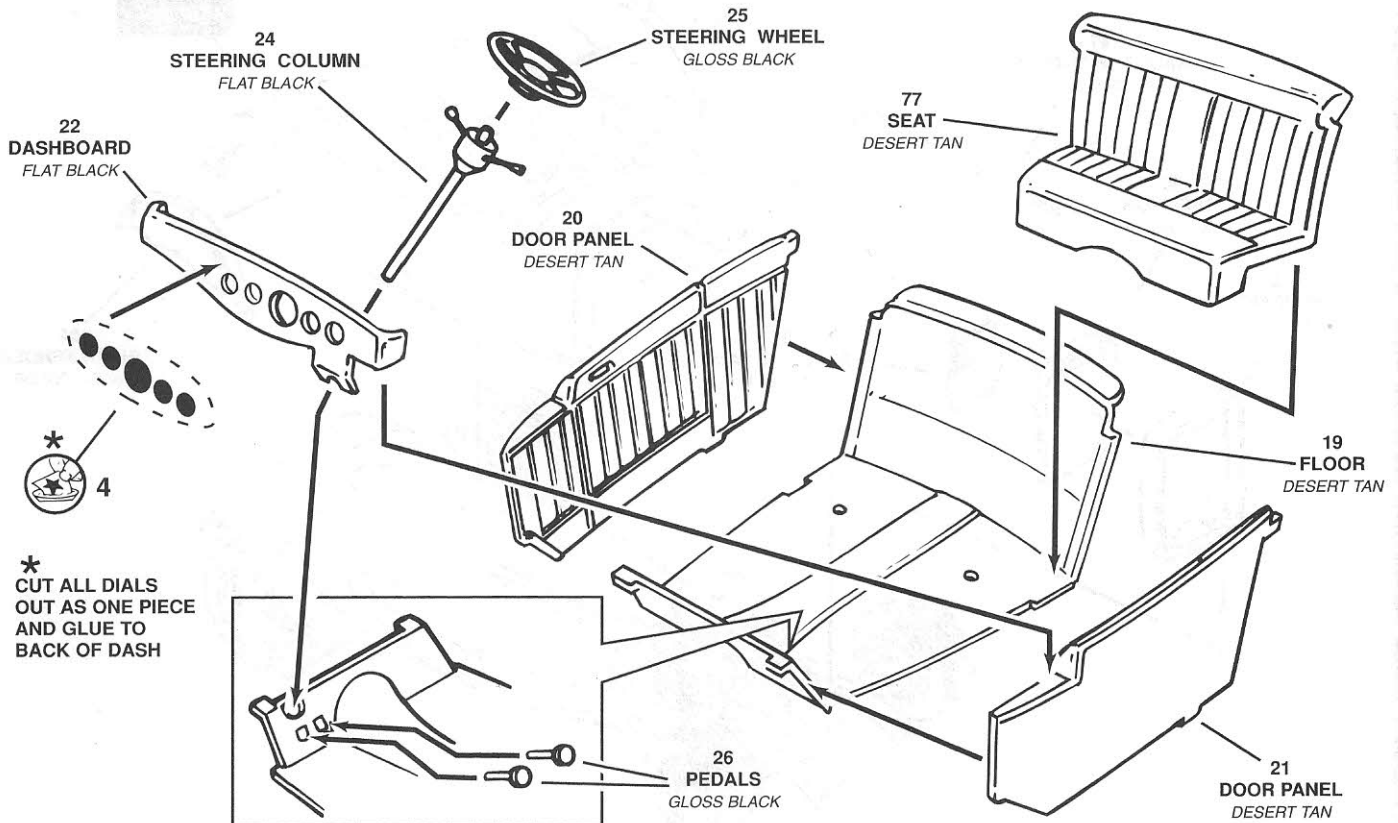
NOTE:
PINS ON THE
FRONT SHOCKS
CEMENT TO HOLES
LOCATED AT THE
BOTTOM OF FRONT
AXLE.



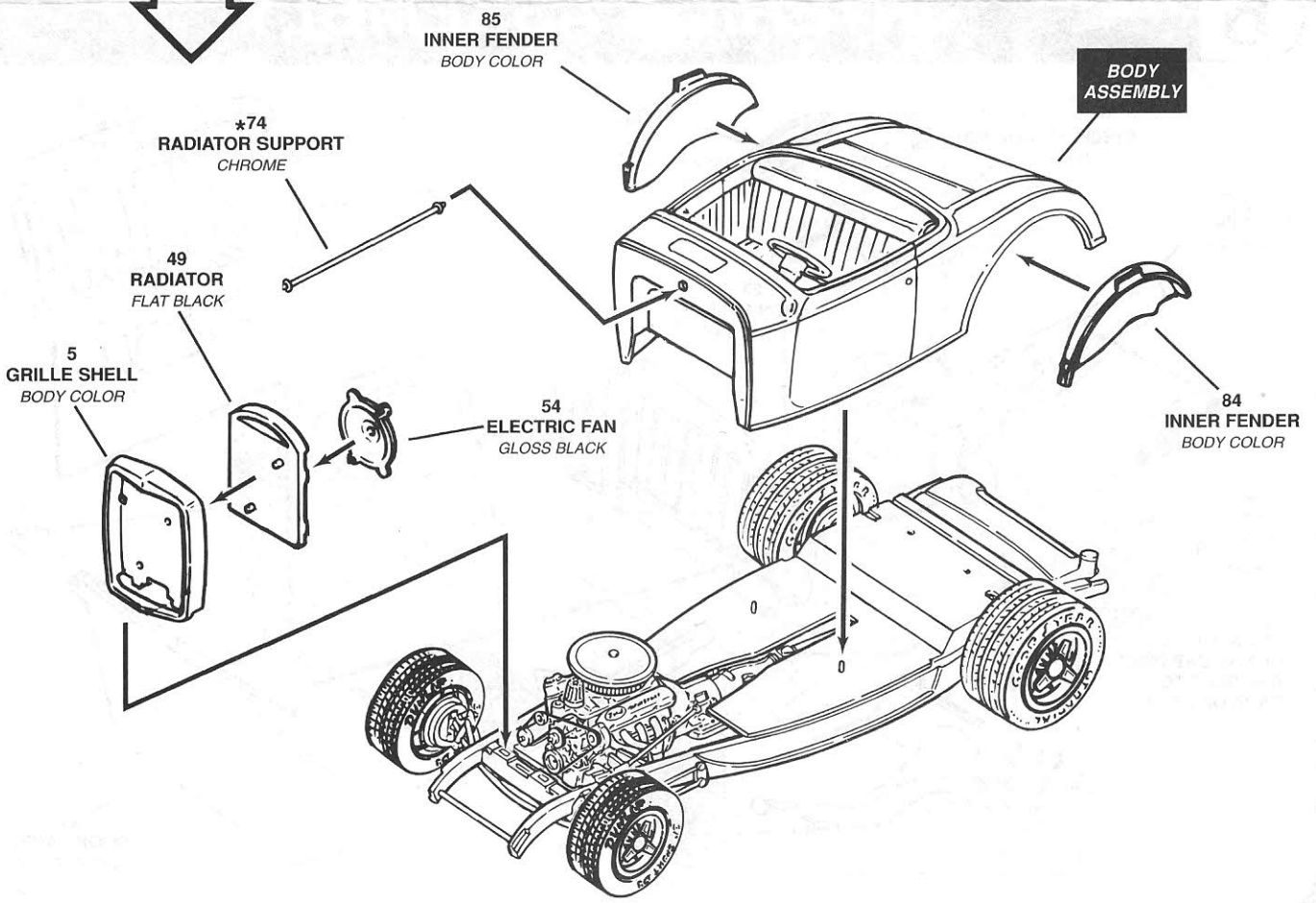
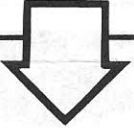
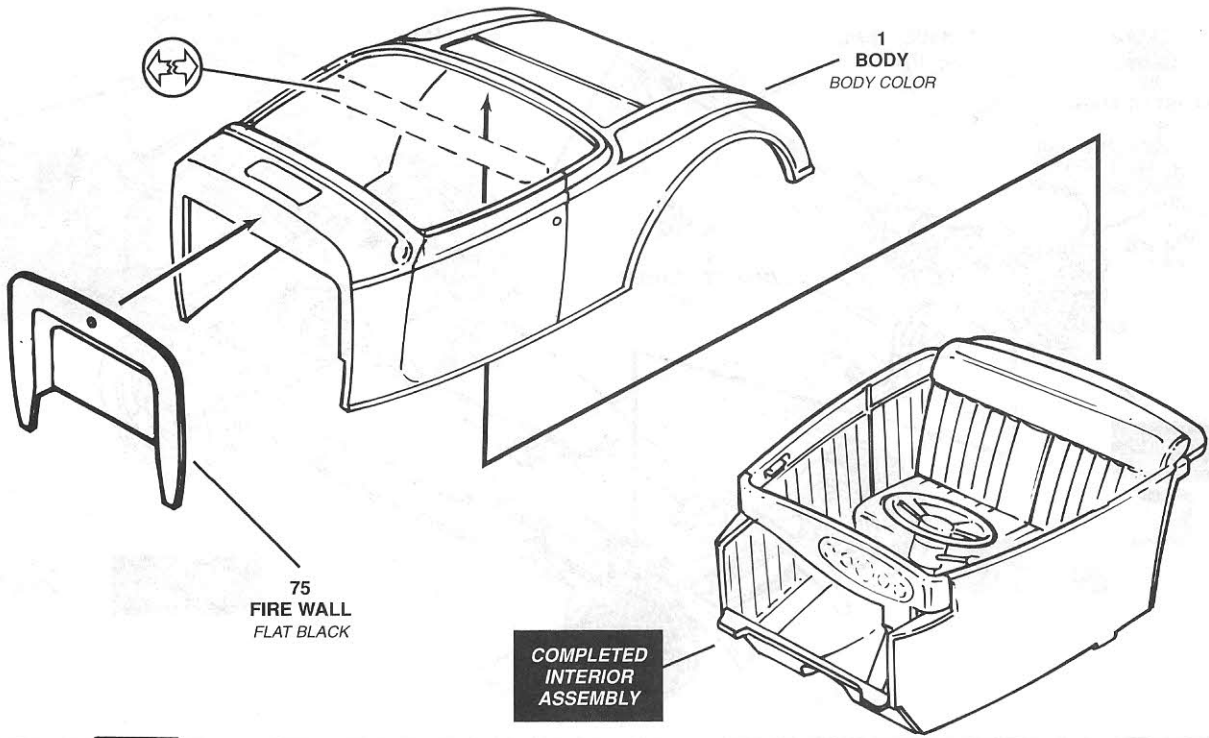
5 ENGINE AND CHASSIS ASSEMBLY

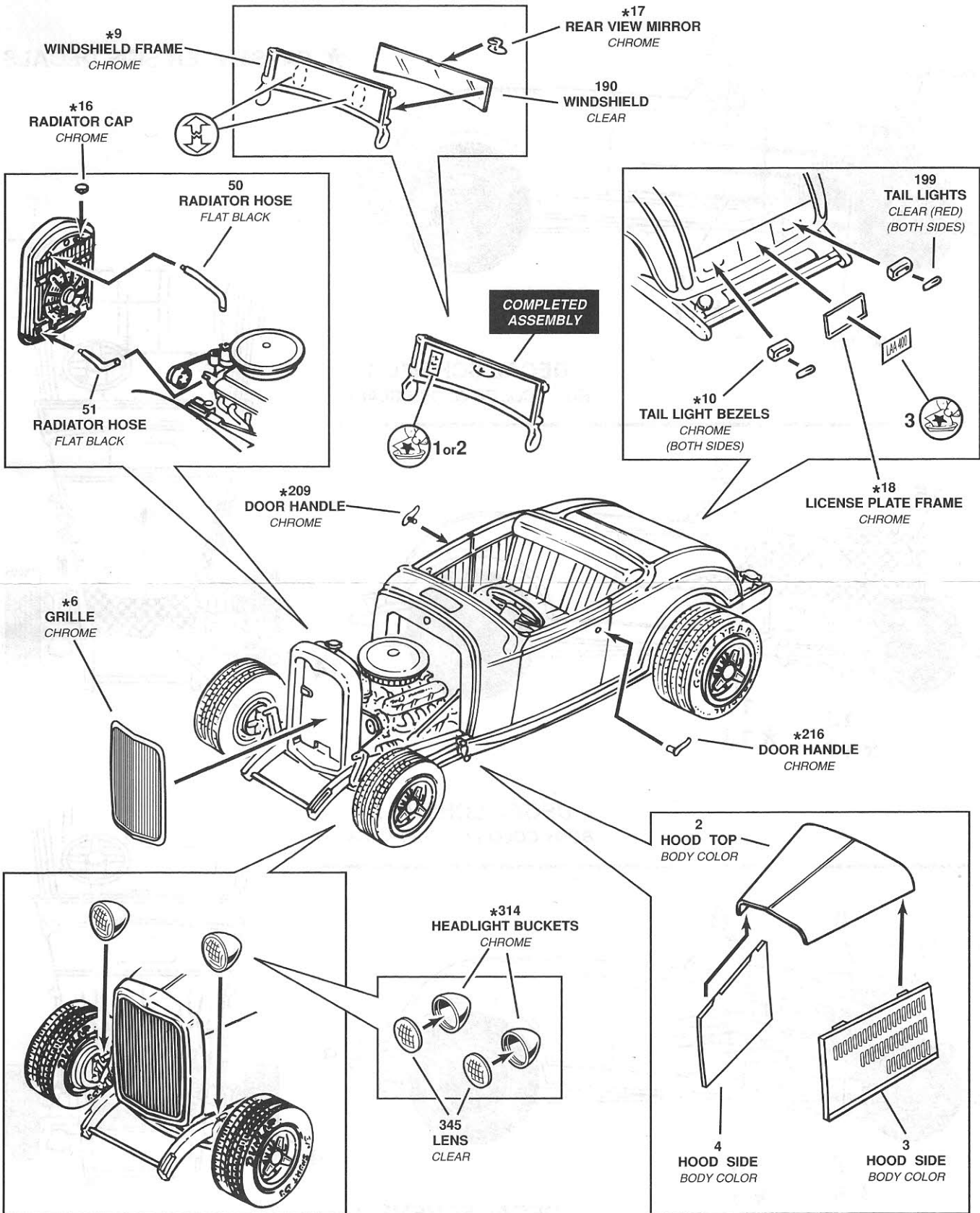


6 INTERIOR ASSEMBLY

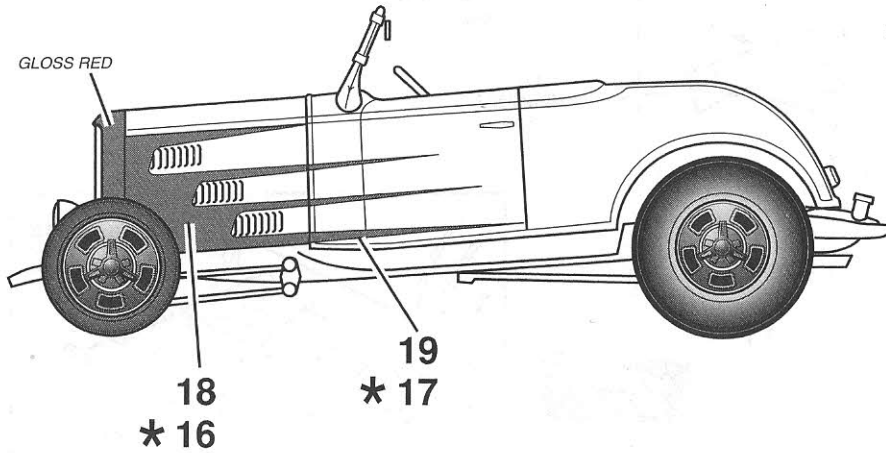


DASH ASSEMBLY

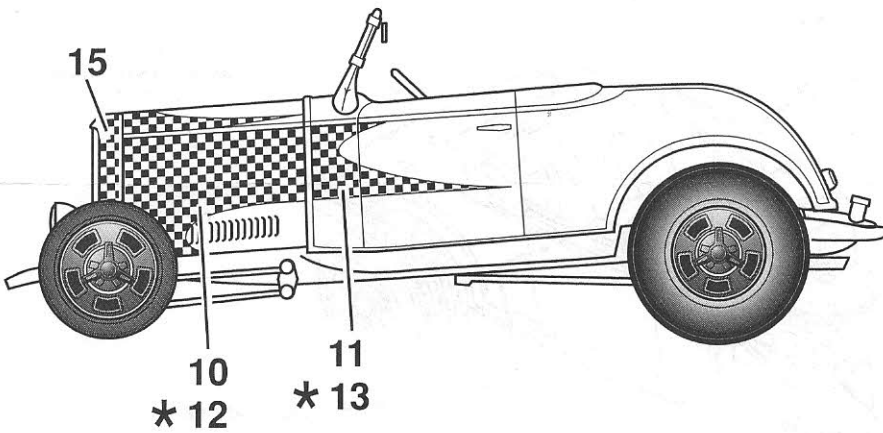




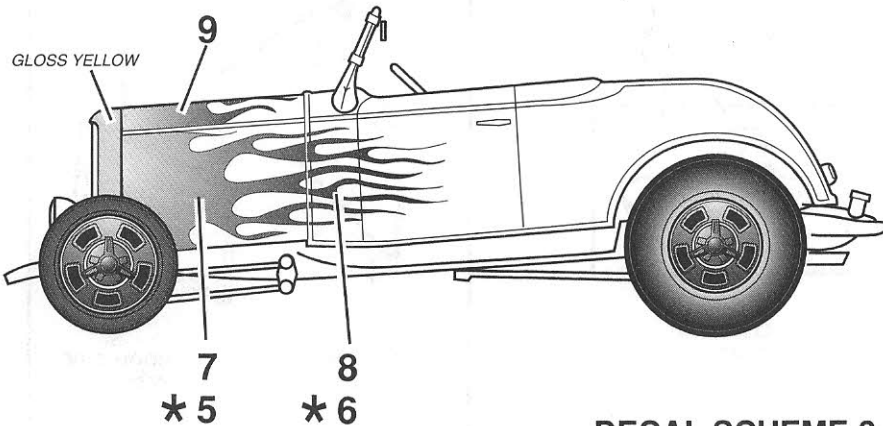
* PASSENGER SIDE DECALS



DECAL SCHEME 1
BODY COLOR GLOSS BLACK



DECAL SCHEME 2
BODY COLOR GLOSS BLACK



DECAL SCHEME 3
BODY COLOR GLOSS RED

