

**M** - Parti accessorie in plastica e ottone  
(in dimensione reale; usare come dima)

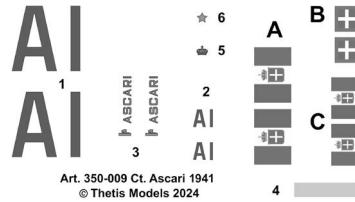
**M** - Accessory parts in plastic and brass  
(actual size, use as a template)

**M1 x 2** ottone/brass (Ø 0,7 mm; h. 23 mm)

**M2** ottone/brass (Ø 0,5 mm; h. 18 mm)

**M3** ottone/brass (Ø 0,5 mm; h. 50 mm)

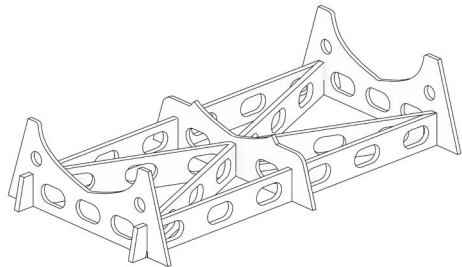
**Decals**  
(illustrate alla dimensioni reali)  
(shown actual size)



**Canne cannoni in ottone (in dimensione reale)**  
**Gun barrels in brass (actual size)**

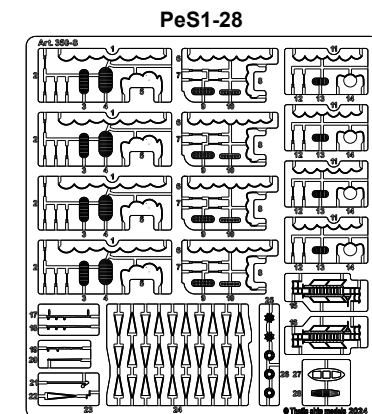
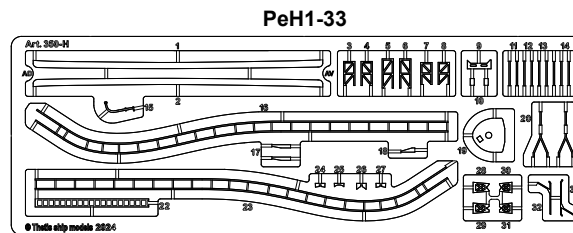
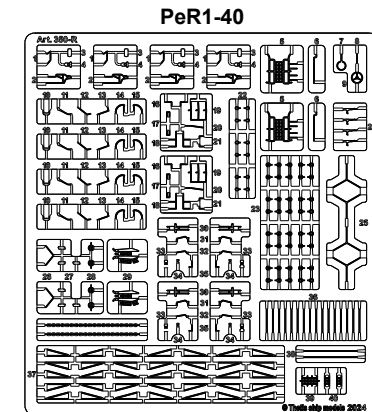
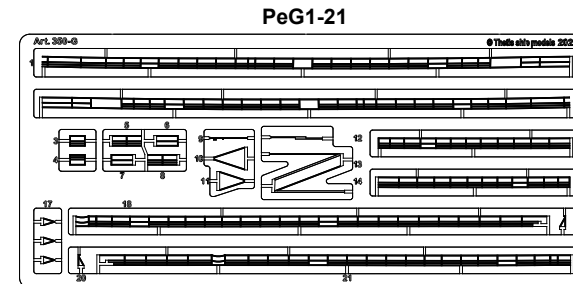
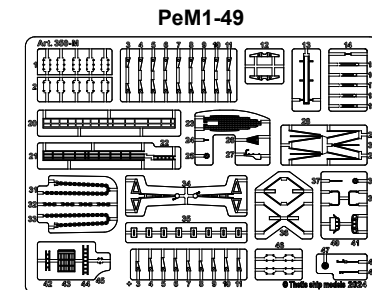
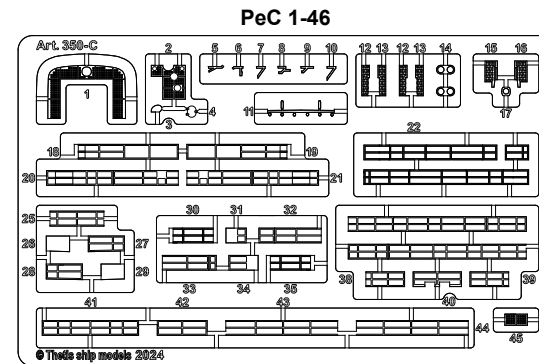
**BR1 x 5**

**Sella da esposizione**  
**Standing**

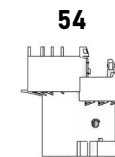
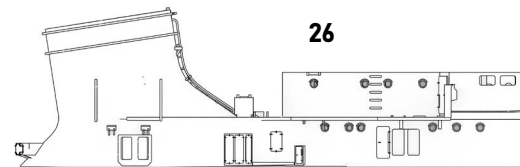
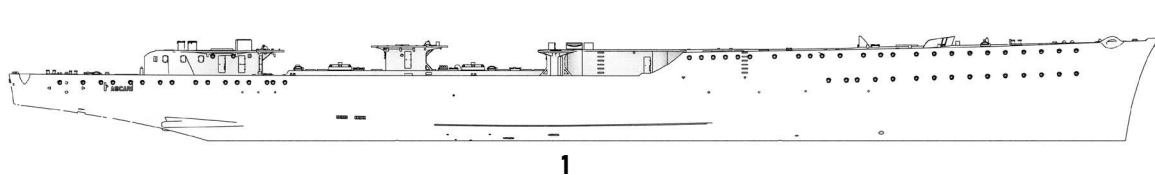


**COMPONENTI DEL KIT**  
**KIT PARTS**

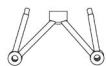
**PE - Parti in fotoincisione (illustrate alla metà delle dimensioni reali)**  
**PE - Photo-etched parts (shown half the actual size)**



Parti in stampa 3D (1 riprodotto circa alla metà delle dimensioni reali; 2-117 e SH riprodotti alle dimensioni reali)  
 3D printed parts (1 shown about half the actual size; 2-117 and SH shown actual size)



2



3



4 x 4



4bis x 4



5 x 2



6 x 2



7 x 3



7bis x 3



8 x 4



9



10



11 x 6



11bis x 6



12



13 x 2



14



15 x 6



16



17



18



18bis x 2



19



20



21



22



23



24



25



27



28



29



30



31



32 x 2



33 x 2



34 x 2



35 x 2



36



37 x 4



38 x 4



39



40



41 x 2



42



43



44 x 2



45



46 x 4



47 x 4



48 x 4



49 x 2



50 x 2



51 x 2



52



53



55



55 bis



56



57



58



59



60



61



62



63



64 x 2



65 x 2



66



67



68



69



70



71



72



73



74



75 x 2



76



77 x 2



78 x 2



79 x 2



80 x 2



81



82



83



84



85 x 2



86



87



88



89



90



91



92 x 2



93 x 4



94



95



96



97



98



99



100



101 x 2



102 x 2



103 x 4



104



105 x 2



106



107



108



109



110 x 6



111



112



113



114



115



116



117



118



SH